



EASTERN KENTUCKY UNIVERSITY
2010 SOFTBALL



#00 MELISSA COSTA
Freshman • Outfield



#1 CASSI GIBSON
Junior • Outfield



#3 DIANE GALLAGHER
Sophomore • Outfield



#4 NOELANI ESPERAS
Junior • Pitcher



#5 CHEYANNE POUNDS
Freshman • Catcher



#6 LARKYN WOOD
Sophomore • 2B



#7 KRISTIN PERRY
Freshman • Pitcher



#8 SAMMI DANIELS
Sophomore • Utility



#9 MEA FLORES
Freshman • Pitcher



#13 STACYE TOUPS
Junior • Pitcher



#14 NIKKI BRUCE
Freshman • 2B



#15 BRITTANY MOCKBEE
Sophomore • Pitcher



#17 ASHLEY DOLLINS
Junior • Catcher



#18 CHRISTINA DATKO
Sophomore • Utility



#19 JENA HANDLEY
Senior • Catcher



#20 DEANN HORSWILL
Junior • 1B



#22 AIMEE SPATHIAS
Freshman • Outfield



#23 RAQUEL HOWES
Freshman • Shortstop



#32 SHYENNE HUSSEY
Senior • 3B



JANE WORTHINGTON
Head Coach



MEGAN INK
Assistant Coach



HEATHER METZGER
Student Manager





TABLE OF CONTENTS

Table of Contents

Quick Facts	1
Eastern Kentucky University	2-3
EKU Majors	4
Richmond and Surrounding Area	5
EKU Softball	6-7

2010 EKU SOFTBALL

Colonel Roster	8
Season Preview	9
Head Coach Jane Worthington	10-11
Assistant Coach Megan Ink	12
Student Manager Heather Metzger	12

MEET THE 2010 COLONELS

Jena Handley	13
Shyenne Hussey	14
Ashley Dollins	15
Cassi Gibson	15
DeAnn Horswill	16
Stacye Toups	16
Samm Daniels	17
Christina Datko	17
Diane Gallagher	18
Brittany Mockbee	18
Larkyn Wood	19
Nikki Bruce	19
Melissa Costa	19
Noelani Esperas	19
Mea Flores	20
Raquel Howes	20
Cheyenne Pounds	20
Kristin Perry	20
Aimee Spathias	20

2009 SEASON REVIEW

Statistics	22
Results	23

COLONEL PROGRAM HISTORY

Batting Records	24
Pitching Records	25
Honors	25
All-Time Roster	26
Where Are They Now	27
Record Versus All Opponents	28
Year-By-Year Results	29-32

PROGRAM INFORMATION

President Doug Whitlock	33
Director of Athletics Mark Sandy	34
Athletics Staff Directory	35
Dugout Club	36
Kerns Softball Camps	36
The Ohio Valley Conference	37
2010 Opponents	38-39
Facilities	40

Credits

The 2010 Eastern Kentucky University softball recruiting guide was produced by the Eastern Kentucky Athletic Public Relations Department. The guide was designed, written and edited by Kevin Britton. Editorial assistance was provided by Mike Clark, Simon Gray, Corey Bray and the Colonel coaching staff. Photography by Chris Radcliffe, Mark Pearson and C W Pack Sports. Printing by Post Printing of Lexington, Ky.



Quick Facts

GENERAL INFORMATION

Location	Richmond, Ky.
Founded	1906
Enrollment	16,200
Nickname	Colonels
Colors	Maroon and White
Affiliation	NCAA Division I
Conference	Ohio Valley
Home Facility (Cap.)	Gertrude Hood Field (500)
President	Dr. Doug Whitlock
Director of Athletics	Mark Sandy
EKU Department of Athletics	859-622-2120

COACHING STAFF

Head Coach	Jane Worthington
Alma Mater	Utah State '82
Record at EKU (Yrs.)	469-436 (17)
Career Record (Yrs.)	469-436 (17)
Office Phone	859-622-1246
E-mail	jane.worthington@eku.edu
Assistant Coach	Megan Ink (Eastern Kentucky, '02)
Office Phone	859-622-2152
E-mail	megan.ink@eku.edu

TEAM INFORMATION

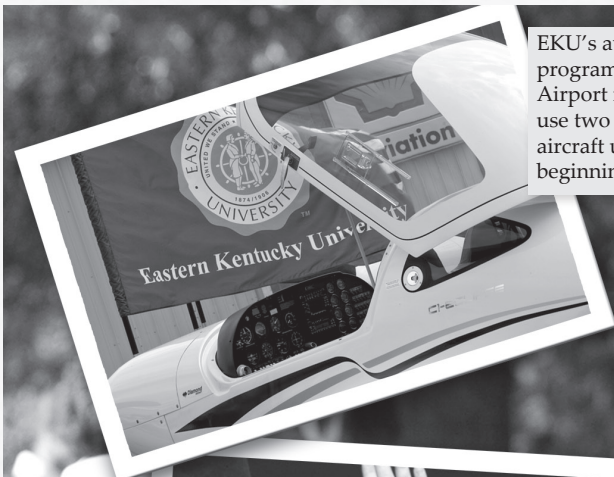
2009 Record	17-27
2009 OVC Record	8-13
OVC Finish	7th
Letterwinners Returning/Lost	11/9
Position Starters Returning/Lost	6/3
Pitchers Returning/Lost	2/4
Newcomers	8
First Year	1993
All-Time Record	469-436 (.518)
NCAA Tournaments	2 (2002, 2004)
NCAA Tournament Record	3-4
OVC Championships	2 (2002, 2004)
OVC Regular Season Titles	2 (2002, 2004)

ATHLETIC PUBLIC RELATIONS

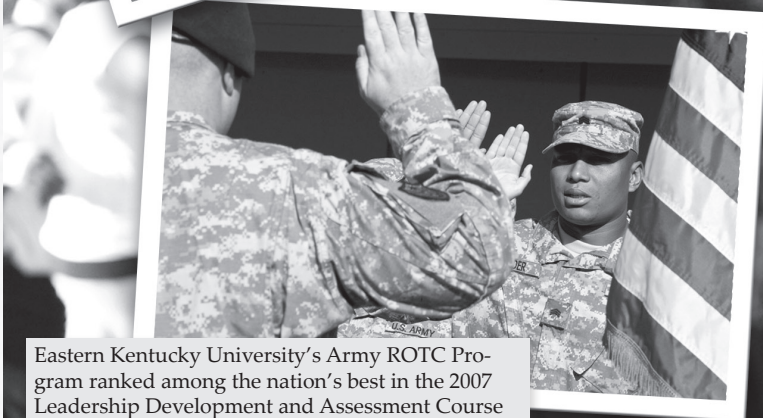
Director of Athletic Public Relations	Mike Clark
E-mail	michael.clark@eku.edu
Assistant Director of Athletic Public Relations/ Softball Contact	Kevin Britton
E-mail	kevin.britton@eku.edu
Office Phone	859-622-2006
APR Fax	859-622-5108
APR Mailing Address	521 Lancaster Ave. Alumni Coliseum 115 Richmond, KY 40475
Athletics Website	www.EKUSports.com



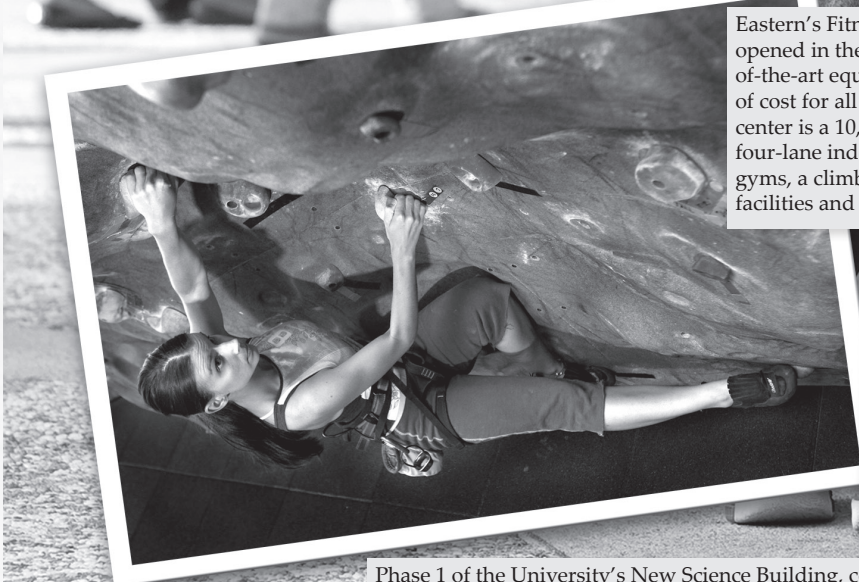
EASTERN KENTUCKY UNIVERSITY



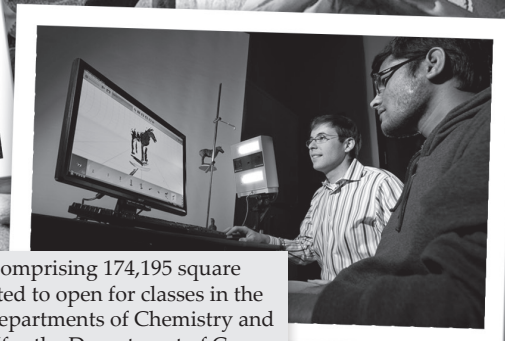
EKU's aviation program, the only university-based program in Kentucky, returned to Madison County Airport in 2008. Students have the opportunity to use two new Diamond DA-20 trainers, the same aircraft used by the U.S. Air Force Academy for beginning flight instruction.



Eastern Kentucky University's Army ROTC Program ranked among the nation's best in the 2007 Leadership Development and Assessment Course (LDAC). Among 132 institutions in the Eastern Region, ECU tied for first in basic rifle marksmanship, tied for second in peer evaluations, ranked 13th on the Army physical fitness test and 23rd in land navigation. In overall leadership, ECU ranked 13th and earned an excellent rating. ECU scored above the national average in every category.



Eastern's Fitness and Wellness Center opened in the fall of 2004 and features state-of-the-art equipment which is available free of cost for all ECU students. Included in the center is a 10,000-square foot weight area, a four-lane indoor track, two multi-purpose gyms, a climbing wall, locker and shower facilities and a lounge area.



Phase 1 of the University's New Science Building, comprising 174,195 square feet at a cost of approximately \$64 million, is expected to open for classes in the Fall 2011 semester. The first phase will house the Departments of Chemistry and Physics & Astronomy as well as science education (for the Department of Curriculum and Instruction) classrooms and laboratories.

THE CAMPUS BEAUTIFUL

Eastern Kentucky offers 168 degree programs including a bachelor of science degree in apparel design and merchandising.



Eastern's Program of Distinction is its College of Justice and Safety, which attracts students from all over the world.



EKU

*Rigorous academics.
Exciting campus life.
Community.
A promising future.
You CAN have it all.*



ACADEMIC PROGRAMS

Accounting (B.B.A.)

Agriculture (B.S.)

- w/Business Minor
- Agribusiness Management
- Agricultural Systems Management
- Agronomy and Natural Resources
- Dairy Herd Management
- Livestock Production
- Pre-Veterinary
- Soils
- Vo-Ag Preparation

Agriculture, Technical (A.A.S.)

- Agricultural Systems Management
- Agribusiness Management
- Floriculture/Greenhouse Management
- Livestock Management
- Landscape Horticulture
- Turfgrass Management

Anthropology (B.A.)

Apparel Design and Merchandising (B.S.)

Art (B.A.)

- Teacher Education Option
- Liberal Arts

Art/Studio Options (B.F.A.)

- Ceramics 3D
- Graphic Design
- Interior Design
- Jewelry and Metals 3D
- Painting 2D
- Photography 2D
- Printmaking 2D
- Sculpture 3D

Assets Protection & Security (B.S.)

Athletic Training (B.S.)

Aviation (B.S.)

- Aerospace Management
- Professional Flight

Biology (B.S.)

- Biology, General
- Aquatic Biology
- Botany
- Microbial, Cellular and Molecular Biology

Biology Teaching (B.S.)

Broadcasting and Electronic Media (B.A.)

- Broadcasting and Electronic Media (General)
- Broadcast News
- Film Techniques & Technology

Business, General (B.B.A.)

- Business (General) Option
- Global Supply Chain Management Option
- International Business Option

Business and Marketing Education

(Teaching) (B.S.)

Career and Technical Education

(Teaching) (B.S.)

- Agriculture Education Option
- Industrial Education Option
- Occupational Training and Development Option
- Engineering/Technology Education Option

Career and Technical Education

(Teaching) (A.A.S.)

Chemistry (B.A.)

- Chemistry Option
- Chemistry Teaching Option

Chemistry (B.S.)

- Biochemistry Option
- Chemistry Option

Child and Family Studies (B.S.)

- Child Development Option
- Family Studies Option
- Interdisciplinary Early Childhood Option

Clinical Laboratory Science (B.S.)

- Cytotechnology Option

Clinical Laboratory Technology (A.A.S.)

Communication Disorders (B.S.)

Communication Studies (B.A.)

Comparative Humanities (B.A.)

Computer Electronic Networking (B.S.)

Computer Information Systems (B.B.A.)

- General CIS
- Networks Management

Computer Science (B.S.)

- Bioinformatics
- Computer Science (General) Option
- Computer Technology Option
- Interactive Multimedia

Construction Management (B.S.)

Corporate Communication &

Technology (B.B.A.)

Correctional and Juvenile Justice

Studies (B.S.)

- Adult Corrections Option
- Juvenile Justice Option

Criminal Justice (B.S.)

Deaf and Hard of Hearing (P-12)

- w/Elem. Educ. (P-5), Teaching (B.S.)

Deaf and Hard of Hearing (P-12) w/Middle

Grade Educ. (5-9), Teaching (B.S.)

Early Childhood Development (A.A.S.)

Earth Science/Teaching (B.S.)

Economics (B.A.)

- Economics (General)
- Applied Economics Option
- International Economics Option
- Public Policy Option

Elementary Education (P-5) Teaching

with one area of emphasis (B.S.)

- Arts and Humanities: General, Humanities, Music, or Visual Arts
- English/Communications
- Foreign Language: French, German, or Spanish
- Kindergarten
- Mathematics
- Multi-Disciplinary
- Science
- Social and Behavioral Sciences

Emergency Medical Care (B.S.)

- Paramedic Clinical/FSE Option
- Paramedic/Science Option
- Emergency Services Administration

English (B.A.)

- English, Teaching, English
- English, Teaching - Theatre
- Literature Emphasis
- Creative Writing Emphasis
- Technical Writing Emphasis
- Theatre Emphasis

Environmental Health Science (B.S.)

Environmental Studies (B.S.)

- Land Resources
- Natural History

Family and Consumer Sciences

Education Teaching (B.S.)

Finance (B.B.A.)

- Finance (General)
- Managerial Finance
- Real Estate

Fire and Safety Engineering

Technology (B.S.)

- Fire, Arson, and Explosion Investigation
- Fire Protection Administration
- Fire Protection Engineering Technology
- Industrial Safety and Risk Management

Forensic Science (B.S.)

- Forensic Chemistry
- Forensic Biology

French (B.A.)

French Teaching (B.A.)

General Dietetics (B.S.)

General Studies (B.A.)

Geography (B.A.)

- Global Studies
- Geotechniques
- Natural Resources

• Community & Regional Planning

Geology (B.S.)

Graphic Communications Management (B.S.)

Health Education (B.S.)

- Community Health
- School Health (P-12)
- Wellness

Health Services Administration (B.S.)

- Ancillary Health Management (open to Associate degrees only)
- Health Care Administration & Informatics

History (B.A.)

History Teaching (B.A.)

Homeland Security (B.S.)

Horticulture (B.S.)

- w/Business Minor
- Floriculture/Greenhouse Management
- Landscape Horticulture
- Turfgrass Management

Individualized Studies (B.I.S.)

Industrial Technology (B.S.)

- Industrial Distribution
- Manufacturing

Insurance (B.B.A.)

Insurance (B.S.)

Interpreter Training (non-teaching) (B.S.)

Journalism (B.A.)

Management (B.B.A.)

- Management (General)
- Human Resource Management

Marketing (B.B.A.)

- Marketing
- Music Marketing
- Professional Golf Management

Mathematics (B.S.)

Mathematics Teaching (B.S.)

- Mathematics Teaching
- Computer Science/Mathematics Teaching

Medical Assisting Technology (A.A.S.)

Medical Practice Management (B.S.)

Middle Grade Education (5-9) Teaching (B.S.)

- English and Communications
- Mathematics
- Science
- Social Studies

Music (B.M.)

- Music Performance
- Music Industry
- Theory and Composition
- Music Teaching

Nursing (A.S.N.)

Nursing (B.S.N.)

Nursing (B.S.N.) Accelerated Program

(Post-Baccalaureate students)

Nursing Post RN Option (RN-B.S.N.)

Occupational Science (B.S.)

Office Systems & Technologies (A.A.S.)

Paralegal Science (B.A.)

Paralegal Studies (A.A.S.)

Paramedicine (A.S.P.)

Philosophy (B.A.)

Physical Education (B.S.)

- Physical Education (General) (non-teaching)
- Physical Fitness and Wellness Management
- Teaching (P-12)

Physics (B.S.)

- Physics (General)
- Engineering Physics

Physics/Teaching (B.S.)

Police Studies (B.S.)

Police Studies (A.A.)

Political Science (B.A.)

Pre-Professional Programs (B.A.) (B.S.)

- Dental, Dental Hygiene, Engineering, Forestry, Law, Medical Sciences, Optometry, Pharmacy, Physical Therapy, Physician Assistant, Veterinary Medicine, Veterinary Medicine

Psychology (B.S.)

Public Relations (B.A.)

Recreation and Park Administration (B.S.)

- Natural Resources & Outdoor Recreation
- Public/Non-Profit Recreation Services
- Therapeutic Recreation
- Tourism & Resort Recreation

Science for Engineering (A.A.S.)

Social Work (B.S.W.)

Sociology (B.A.)

Spanish (B.A.)

Spanish Teaching (B.A.)

Special Education (non-teaching) (B.S.)

- Deaf and Hard of Hearing (P-12)
- w/Elementary Education (P-5), Teaching
- Deaf and Hard of Hearing, Non-Teaching
- Interdisciplinary Early Childhood Education - Special Education Early Childhood
- Learning and Behavior Disorders (P-12)
- w/Elementary Education (P-5), Teaching
- Learning and Behavior Disorders (P-12)
- w/Middle Grade Education (5-9), Teaching
- Learning and Behavior Disorders, Non-Teaching

Special Education (Teaching)

Interdisciplinary Early Childhood Education - Special Education Early Childhood (B.S.)

Special Education (Teaching)

Learning & Behavior Disorders

(non-teaching) (B.S.)

- Learning and Behavior Disorders (P-5)
- Learning and Behavior Disorders (5-9)

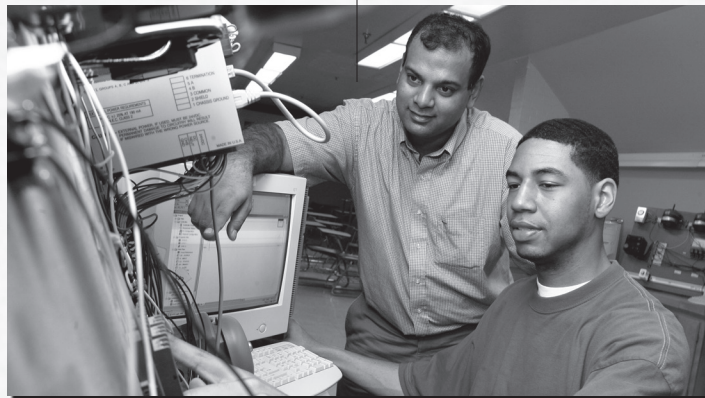
Sport Management (B.S.)

Statistics (B.S.)

Technology (A.A.S.)

- Computer Aided Drafting
- Computer Electronics
- Digital Imaging Design
- Quality Assurance

Wildlife Management (B.S.)



RICHMOND AND SURROUNDING AREA



Richmond is home to many interesting and convenient activities. Whether it's arts and entertainment, recreation, or shopping and dining out you are looking for, Richmond has it all.

With more than 100 buildings in Richmond on the National Register of Historic Places and three areas on the National Register of Historic Districts, it is one of Kentucky's finest restored 19th Century commercial districts.

Arts and entertainment take center-stage with the Eastern Kentucky University theatre program. They offer several shows each year from classical theatre to modern musicals. Local artistic talents are on display year round at Gallery On Main. This is a perfect showcasing of local talent and an opportunity for community involvement.

There is never any lack of recreational activities in Richmond. An array of parks and recreational centers across the city offers something for everyone. Lake Reba Recreational complex includes golf, little league baseball and softball fields, soccer, fishing and a water park which opened in the summer of 2008.

If it's shopping you want, downtown Richmond can accommodate you. Locally owned businesses line the historic streets of downtown Richmond with everything from fine antiques to exquisite jewelry. There is a wide variety of stores at the brand new Richmond Centre as well. The outdoor mall offers shoppers convenience and style.

Dining isn't hard to find either. Family-owned and major chain restaurants give Richmond a unique variety of menus. Local hot spots include Madison Gardens, which is uniquely Richmond, to restaurants such as Applebee's, Logan's Roadhouse, O'Charley's and Outback Steakhouse. Whatever your palate craves, Richmond dining offers a variety of tastes made to satisfy.

Never far from mainstream, Richmond offers the comforts of simplicity with the convenience of the city.

Only 29 miles from Lexington and the Bluegrass Airport, Richmond is easily accessible to all travelers. Interstate 75 is a major artery of both state and national motor transportation. Richmond's location on I-75 makes it an important factor in making the city a commercial hub.

In fact, the ease of travel to and from Richmond makes the city an ideal spot for those who enjoy outdoor activities.

Fort Boonesborough State Park is located only 12 miles from ECU's campus, while Natural Bridge State Park (63 miles) and Cumberland Falls State Park (100 miles) are located nearby.

Also within easy driving distance of Richmond are the Kentucky Horse Park, the state capital in Frankfort, Herrington Lake, My Old Kentucky Home at Bardstown, White Hall State Shrine and thoroughbred horse racing at Keeneland.

A Brief Richmond History

Richmond was founded in 1798 by Colonel John Miller, a Revolutionary War soldier. In 1798, the Kentucky Legislature authorized the moving of the Madison County seat from nearby Milford to land owned by Colonel Miller.

The move was bitterly opposed by about 300 residents of the Milford area and a fight to retain the seat resulted between Dave Kennedy, who represented the Milford location, and William Kearly, who represented the new site.

Although history does not record the results of the brawl, the county approved the move in March of 1798 and two acres of land were purchased from Colonel Miller. Court was held in his barn.

On July 4, 1798, the site was officially named Richmond in honor of Miller's birthplace, Richmond, Va.

--From www.richmond.ky.us

Valhalla Golf Club in Louisville hosted the 2008 Ryder Cup.

The Kentucky Derby takes place on the first Saturday in May at historic Churchill Downs in Louisville.

The state capital of Frankfort and Lexington are both within an easy hour drive from campus.

Main Street in downtown Richmond is right around the corner from the ECU campus.

The National Corvette Museum is located in Bowling Green.

Kentucky
UNRIDLED SPIRIT



THIS IS EKU SOFTBALL

68

All-Ohio Valley Conference
selections



2

NCAA Tournament
Appearances

2

OVC Regular Season &
Tournament Championships

4

Ohio Valley Conference
Freshmen of the Year

1

Academic All-American

18

Ohio Valley Conference
Academic Medal of Honor
selections in 15 years

3

Ohio Valley Conference
Players of the Year

2

Ohio Valley Conference
Pitchers of the Year

101

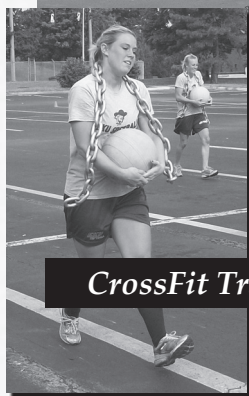
Ohio Valley Conference
Commissioner's Honor Roll
selections in 15 years, in-
cluding three straight years
of 10 or more selections



Elise Burch



Lunch With Elementary Students



CrossFit Training



Annual Breast Cancer Tournament



Canned Food Drive Champs



Habitat For Humanity

EKU HALL OF FAME | OLYMPIAN

On December 14, 2005, Eastern Kentucky University announced the creation of an Athletics Hall of Fame. The Hall of Fame's mission is to commemorate and honor student-athletes, other individuals and teams whose accomplishments have contributed to the esteemed tradition of Colonel Athletics and whose character has reflected positively on the University.

An extraordinary group of individuals, previously recognized by the University during the 1974 Centennial Athletic Awards Banquet, were inducted into the Hall of Fame on Nov. 3, 2006. This group of 25 is called The Founders. They were joined by an inaugural class of 13 members to make up the 2006 inductees.

In 2008, Jonelle Csora-Clark became the first ECU softball player to be inducted into the Athletics Hall of Fame. In 2009 Kim Sarrazin-Blouin joined Csora-Clark in the Hall of Fame.



Jonelle Csora-Clark (2000-03, Pitcher, Massillon, Ohio)

The most decorated pitcher in ECU softball history, Jonelle Csora-Clark was a three-time all-conference selection and holds several program records. Csora earned Ohio Valley Conference Pitcher of the Year honors following her junior and senior seasons.

As a junior, she also earned OVC Tournament MVP recognition while leading the Colonels to the league championship and a berth in the NCAA Tournament. The Massillon, Ohio native earned all-conference and all-tournament honors in 2001, 2002, and 2003 and all-region second team honors in 2002. She tossed two seven-inning no-hitters and a six-inning no-hitter during her senior season.

Csora holds ECU's career pitching records for games played (144), games started (105), complete games (75), wins (72), consecutive wins (9), innings pitched (740.2), earned run average (1.74), shutouts (30), strikeouts (754), and opponent batting average (.194).

The astounding numbers also account for program single-season records in complete games (28), wins (25), earned run average (0.97), shutouts (11), strikeouts (273), and opponent batting average (.166). Csora also holds the record for most strikeouts in a game (15).

She recently married former ECU assistant football coach Shawn Clark.

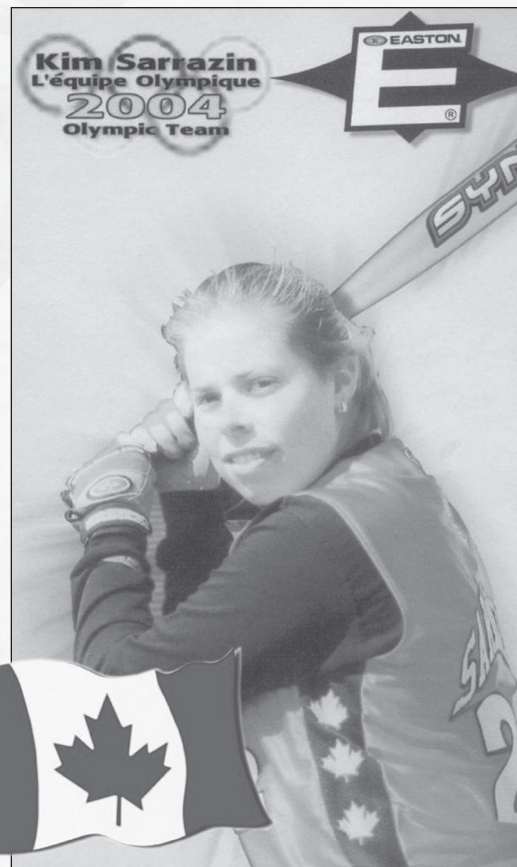
Kim Sarrazin-Blouin (1997-00, Catcher, St.-Eustache, Quebec)

After four stellar years behind the plate at Eastern Kentucky, catcher Kim Sarrazin continued her playing career, competing internationally for her native country. Sarrazin started for both the Canadian National Team, which placed ninth at the 2002 World Championships in Saskatchewan, and the 2004 Canadian Olympic Team, which finished fifth in Athens, Greece.

The 2000 Ohio Valley Conference Player of the Year led the league in six different categories as a senior, including batting average (.298) and RBIs (29). A three-time All-OVC first team selection, Sarrazin holds the school record for career hits (235), doubles (46), RBIs (120) and consecutive games with a hit (21).



TM ©
ATHENS 2004





2010 ROSTER



No.	Name	Pos.	B/T	Ht.	Yr.	Hometown (Previous School)
00	Melissa Costa	OF	L/R	5-7	Fr.	Turlock, Calif. (Turlock HS)
1	Cassi Gibson	OF	L/R	5-8	Jr.	Brawley, Calif. (Brawley Union HS)
3	Diane Gallagher	OF	L/R	5-5	So.	Atwater, Calif. (Buhach Colony HS)
4	Noelani Esperas	P	R/R	5-2	Jr.	Kane'ohe, Hawai'i (Eastern Arizona College)
5	Cheyenne Pounds	C	R/R	5-6	Fr.	El Paso, Texas (Saginaw HS)
6	Larkyn Wood	2B	R/R	5-6	So.	Georgetown, Ky. (Scott County HS)
7	Kristin Perry	P	R/R	5-7	Fr.	Lexington, Ky. (Woodford County HS)
8	Samm Daniels	UTL	L/R	5-3	So.	Hamilton, Ohio (Fairfield HS)
9	Mea Flores	P	R/R	5-5	Fr.	Torrance, Calif. (Torrance HS)
13	Stacye Toups	P	R/R	5-11	Jr.	Loveland, Ohio (Loveland HS)
14	Nikki Bruce	2B	R/R	5-5	Fr.	Overland Park, Kan. (Shawnee Mission West HS)
15	Brittany Mockbee	P	R/R	5-10	So.	Louisville, Ky. (Ballard HS)
17	Ashley Dollins	C	R/R	5-10	Jr.	Berea, Ky. (Rockcastle County HS)
18	Christina Datko	UTL	R/R	5-1	So.	San Diego, Calif. (Scripps Ranch HS)
19	Jena Handley	C	R/R	5-6	Sr.	Garden Grove, Calif. (Garden Grove HS)
20	DeAnn Horswill	1B	R/R	5-4	Jr.	Kailua, Hawai'i (Kalaheo HS)
22	Aimee Spathias	OF	L/R	5-9	Fr.	Glendora, Calif. (Charter Oak HS)
23	Raquel Howes	SS	L/R	5-6	Fr.	Colorado Springs, Colo. (Liberty HS)
32	Shyenne Hussey	3B	L/R	5-5	Sr.	Waimanalo, Hawai'i (Kailua HS)

Head Coach: Jane Worthington (Utah State, 1982), 18th Season

Assistant Coach: Megan Ink (Eastern Kentucky, 2002), Eighth Season

Student Manager: Heather Metzger (Eastern Kentucky, 2009), First Season

PRONUNCIATION GUIDE

Melissa Costa
Noelani Esperas
Shyenne Hussey
Aimee Spathias

CAH-sta
NOEE-lani
Shy-ANN huss-ee
Spah-THEE-us

Christina Datko
Mea Flores
Heather Metzger
Stacye Toups

DAT-co
MEE-ah
METS-grr
toops

2010 SEASON PREVIEW



A new attitude exists within the Eastern Kentucky University softball program. The 2010 Colonels are tougher physically, tougher mentally, and dedicated to returning EKU softball to the top of the Ohio Valley Conference standings.

The Colonels will try to rebound from just their third conference losing season ever in 2009. Eastern finished last season 17-27 overall and 8-13 in the OVC. The only other times EKU had losing records in conference play were 1993, the first season of the program's existence, and 2005. Last season's squad also missed the OVC tournament for the first time ever.

Five position players, the starting designated hitter and two pitchers return from last season's team. They'll be joined by three other returning letter winners and eight newcomers.

The change in attitude is a combination of re-dedication by the 11 returning players and the addition of new energy brought in by eight new Colonels.

"The players we have this year are really buying in," said head coach Jane Worthington, in her 18th season leading the Colonel program. "I've never seen a team work this hard. We're a much more cohesive team and we've developed a family atmosphere. Our teams that have had this characteristic in the past have done very well."

The 2010 team is deeper at every position on the field, has a deeper pitching rotation, has the versatility needed to navigate through a long season, and can send out a balanced line-up that features speed, power and average.

Part of the team's new attitude stems from a new training regimen introduced by the coaches this past fall. CrossFit is the principal strength and conditioning program for many police academies and tactical operations teams, military special operations units, champion martial artists, and hundreds of other elite and professional athletes worldwide.

"The change in our strength program has helped our team get stronger and mentally tougher," said Worthington. "It's much more difficult. I'm asking much more of them than I have in the past and they've really responded. They've learned to dig a little deeper to get through the work outs and I know that will carry over to the field."

INFIELD

Among Eastern's returning starters is three-time All-OVC selection Shyenne Hussey. The third baseman led the team and finished sixth in the conference with a .349 batting average and had the second highest on-base percentage (.471) in the OVC. She belted six home runs and drove in 29 runs.

"Shyenne is in the best shape of her career and has really taken to the leadership role," said Worthington. "Now that she's a senior, she has that sense of urgency to accomplish her goals, which include leading this team to a championship."

Hussey will anchor the infield. Sophomore Larkyn Wood and freshman Raquel Howes will take care of the middle infield at second base and shortstop respectively. Junior DeAnn Horswill, a utility player for much of her career, has developed into a starter at first base.

Wood started 28 games last season, primarily at shortstop. She batted .231 her first season and scored 10 runs. The Georgetown, Ky., native will slide over to second base for her sophomore campaign. Howes earned first team all-state recognition in Colorado as a senior and led the state with 13 home runs. Freshman Nikki Bruce adds depth up the middle and will push Wood for playing time at second.

OUTFIELD

Sophomore outfielder Diane Gallagher returns after earning first team

all-conference honors as a freshman. She was also selected to the OVC All-Newcomer team. Gallagher finished second in the OVC with 24 stolen bases and was not thrown out attempting to steal all season. She ranked 27th in the nation with an average of 0.55 stolen bases per game.

Gallagher will be joined in the outfield by junior Cassi Gibson and freshman Aimee Spathias. Gibson batted .280 and led the team with 30 runs while starting all 44 games last season. As a freshman she was selected to the OVC All-Newcomer team. Spathias hit .351 and scored 24 runs as a senior at Charter Oak High School in Glendora, Calif.

Sophomore Christina Datko and freshman Melissa Costa will see time in the outfield as well. Datko has improved both defensively and offensively in addition to becoming a more consistent player. Costa was a first team all-conference selection as a junior and senior at Turlock High School. Sophomore Samm Daniels will provide depth in the outfield and the infield when needed.

"We have two outfielders with a lot of experience and we have a group of three players that lack experience, but do a lot of positive things that can help us win," Worthington said. "All of them are quick, we'll have a pretty fast outfield."



Senior Jena Handley (C)

CATCHERS

Jena Handley, along with Hussey, is one of only two seniors on the team. The three-year starter batted .284 with three home runs, 18 RBIs and 17 runs last season. She ranked as the 82nd toughest player in the nation to strike out in 2009. Handley was a second team All-OVC selection as a sophomore.

"Jena can call a good game, nothing is going to get by her and she hits the ball very well," said Worthington. "We'll play her at first base as well so we can get our other two catchers game experience."

Junior Ashley Dollins started 31 times a year ago. Freshman Cheyanne Pounds was a teammate of fellow freshman Raquel Howes for three seasons at Liberty High School in Colorado before finishing her prep career in Texas.

"We have three very solid options that we can mix and match with different pitchers," Worthington said. "They each bring different strengths to the table."

PITCHERS

Two pitchers return from last season's team. Junior Stacye Toups went 4-10 with a 4.60 ERA. Sophomore Brittany Mockbee made 18 appearances and posted a 1-7 record with a 4.27 ERA. Mockbee's season was hampered by an injury, which ultimately ended her freshman campaign early.

Three newcomers will join the rotation in 2010.

Noelani Esperas earned first team All-America honors and was selected first team All-Arizona Community College Athletic Conference at Eastern Arizona College last season. She posted a 27-6 record, a 1.40 ERA, and struck out 255 batters in 205 innings. In addition, she batted .372 with six home runs and 30 RBI.

Mea Flores, a freshman, was impressive during the fall season. She had a 0.86 ERA and struck out 148 batters her senior season at Torrance High School. Freshman Kristin Perry totaled more than 1,200 strikeouts for Woodford County High School during her career.

"The combination of being healthy and the influx of new talent have really made us deeper in the circle," said Worthington. "There isn't a drop off from the top to the bottom. We'll be able to weather injuries or inconsistent play much better than we have in the past."



Senior Shyenne Hussey (3B)



HEAD COACH



Jane Worthington

Position: Head Coach

Year: 18th Season

Alma Mater: Utah State, '82

Hometown: Washington, Utah

2002 & 2004 OVC Coach of the Year

It was fitting that long-time head softball coach Jane Worthington's 400th win at Eastern Kentucky came as the Colonels advanced to the title contest of the 2006 conference championship, a game that Worthington has grown accustomed to competing in during her 17 years at the helm of the program.

Worthington has been committed to the success of Eastern Kentucky softball since she started in 1993, and as of late, the rewards have been coming fast and furious.

The Washington, Utah native is entering her 18th year with the Colonels and has guided the squad to two OVC titles and two NCAA tournament appearances. The expectations remain high for the 2010 team as the squad looks to return to post-season play.

Since taking over the helm of the Colonels' program, Worthington has posted an impressive 469-436 overall mark and an even more striking 232-164 mark in Ohio Valley Conference play. She has led the Colonels to victory in nearly 60 percent of their conference games, and under Worthington's guidance, ECU has earned a spot in 15 of the 16 OVC tournaments since the event began in 1994. During the past eight seasons, Worthington's efforts in building the program were rewarded as the Colonels finished in the top three in the conference four times, won a pair of OVC championships and advanced to two NCAA tournaments.

The 2004 season, Worthington's best yet, saw the team capture the OVC title and make its second NCAA tournament appearance in three years. Worthington also guided the Colonels to a 42-win season, the most victories in program history, before earning her second OVC Coach of the Year award.

Two years prior, Eastern Kentucky earned the school's first-ever conference championship and Worthington was selected as the league's coach of the year.

Throughout her career, Worthington has produced several standout players as three Colonels have been named OVC Player of the Year and four players have earned Freshman of the Year recognition. Twenty-seven All-OVC first team players have come through the program and 26 players have been named to the league's second team.

Worthington has found success on the diamond with solid pitching and strong defense while testing her team early with a challenging non-conference schedule. Never one to shy away from tough competition, she regularly schedules games against nationally-ranked programs in order to prepare her squad for the demands of Ohio Valley Conference opponents.

Worthington maintains that the only way to improve is to

play the best possible teams in the country. Her Eastern Kentucky squads have faced numerous nationally-ranked opponents, defeating No. 7 South Carolina in 1995 and facing top-ranked UCLA in the 2002 NCAA Regional. More recently, the Colonels fell in close games to No. 22 Washington and No. 15 Hawai'i in 2008, and 18th ranked Louisville in 2009.

In addition, Worthington has established a nation-wide recruiting base and continues to attract top players from the best high schools and junior college programs in the country.

Worthington, the only coach in the program's 17 year history, has built the program from the ground up, starting in her first year at ECU with the construction of Gertrude Hood Field. The Colonels' first season of competition, in the spring of 1993, Worthington led the team to an 11-26 record and the following year, the Colonels posted a 26-28 mark.

In just its third year, the program posted its first-ever winning season (31-29) and advanced to the finals of the conference tournament. Worthington led Eastern Kentucky to another winning season in 1998, ending with 38 wins, and reached a career milestone with her 200th victory in 2001. The Colonels competed in the national postseason, playing in both the 2002 and 2004 NCAA tournaments.

Prior to Eastern Kentucky, Worthington spent two years as an assistant coach at Miami (Ohio) and one year as an assistant at Livingston University in Alabama. Before entering the collegiate





HEAD COACH

coaching ranks, Worthington taught junior high school in Idaho.

Worthington, a 1982 graduate of Utah State, helped the Aggies capture the 1981 national championship with a win over Cal-State Fullerton in the finals. Winning a championship as a player, Worthington knows what it takes to be a winner and has successfully instilled those beliefs in her players. As a result, a large number of her former players have followed her lead and entered the coaching profession.

A strong supporter in the growth of fast-pitch softball in Kentucky, Worthington has provided numerous opportunities for individuals to enhance their softball skills at clinics and camps. On a yearly basis, she hosts player development clinics and camps to help fast-pitch softball develop throughout the state. Worthington believes in giving all players the chance to increase their skills and attempts to keep costs low so that everyone interested can attend. In addition, she believes in devoting personal attention to each participant and as a result, tries to keep the number of participants low by scheduling multiple events. Worthington has instructed more than 3,000 players at the Eastern Kentucky camps and clinics throughout the years and has helped raise the level of play in Kentucky and surrounding states. In 1996, Worthington was given the state's Citizen for Sports Equity Outstanding College Coach Award.

The Colonels' coach also stresses the importance of academics and expects her players to also excel in the classroom. She feels that a balance can be achieved, and with good management skills, her student-athletes can succeed in the classroom and on the playing field. Her close work with the Chad Bratzke Student-Athlete Academic Success Center has resulted in many past ECU softball



players being recognized as Colonel Scholars. In 1999, Michelle Williams received the OVC Medal of Honor for the fourth time after graduating with a perfect 4.0 GPA. In 2002 Elise Burch became Eastern's first softball Academic All-American.

After graduation, Worthington's past players have entered the professional fields of law, criminal justice, education, business, aviation and coaching.

Worthington earned a master's degree in Sports Studies from Miami (Ohio) in 1991.

WORTHINGTON THROUGH THE YEARS

Year	School	Overall	Pct.	Conf.	Pct.	Postseason
1993	Eastern Kentucky	11-26	.298	6-11	.353	OVC
1994	Eastern Kentucky	26-28	.481	13-11	.542	OVC
1995	Eastern Kentucky	31-29	.517	13-11	.542	OVC
1996	Eastern Kentucky	18-35	.339	15-11	.577	OVC
1997	Eastern Kentucky	23-29	.442	14-13	.518	OVC
1998	Eastern Kentucky	38-19	.667	15-5	.750	OVC
1999	Eastern Kentucky	23-31	.426	12-12	.500	OVC
2000	Eastern Kentucky	26-34	.452	14-10	.583	OVC
2001	Eastern Kentucky	41-17	.707	15-5	.750	OVC
2002	Eastern Kentucky	37-14	.725	16-2	.889	NCAA/OVC
2003	Eastern Kentucky	29-18	.617	13-7	.650	OVC
2004	Eastern Kentucky	42-17	.712	22-4	.846	NCAA/OVC
2005	Eastern Kentucky	22-30	.423	12-14	.462	OVC
2006	Eastern Kentucky	33-29	.532	13-13	.500	OVC
2007	Eastern Kentucky	24-31	.436	14-12	.538	OVC
2008	Eastern Kentucky	28-22	.560	17-10	.630	OVC
2009	Eastern Kentucky	17-27	.386	8-13	.381	---
TOTAL	17 Seasons	469-436	.518	232-164	.586	





ASSISTANT COACHES



Megan Ink

Position: Assistant Coach
Year: Eighth Season
Hometown: San Jose, Calif.
Alma Mater: Eastern Kentucky, '02 & '06

Eastern Kentucky head softball coach Jane Worthington did not have to look very far to find her assistant coach when she tabbed former Colonel catcher Megan Ink for the position seven years ago.

Now set to begin her eighth year on the EKU coaching staff, Ink's responsibilities include arranging team travel, working with the pitchers and catchers and assisting Worthington in all aspects of coaching. She has been instrumental in maintaining the program's strong recruiting ties to the west coast.

In seven seasons, Ink has helped the Colonels to four top-four finishes in the Ohio Valley Conference, including an OVC championship in 2004.

After a stellar two-year career behind the plate, Ink's transition to the Eastern Kentucky coaching staff was an easy one. An outstanding player in her own right, Ink also has the distinction of being part of both Colonel NCAA tournament appearances. She competed in the tournament as a player in 2002 and returned as a member of the coaching staff in 2004.

"Megan has done a fantastic job since coming on board, especially in terms of improving our pitching," Worthington said. "She



knew my style of coaching as a player and has adapted very easily to coaching. Megan is a true asset to this program."

The All-OVC second team honoree started 96 of 98 games behind the plate for the Colonels while making just three errors in her two-year career. She posted a career-high batting average of .246 and helped lead Eastern Kentucky to its first-ever NCAA tournament in 2002.

Prior to coming to Eastern Kentucky, Ink spent her first two collegiate seasons at San Jose City College. While at SJCC, Ink was named to the all-conference first team and to the All-Northern California Team. In addition, she was named the team's MVP following her sophomore year.

Ink has been heavily involved in conducting clinics and camps throughout the state of Kentucky.

The San Jose, Calif., native earned her bachelor's degree in correctional and juvenile justice studies from Eastern Kentucky in 2002. She earned a master's degree in sports administration from Eastern Kentucky in December of 2006. In the summer of 2007, the former Megan Mills married Brian Ink.



Heather Metzger

Position: Student Manager
Year: Graduate Student
Hometown: Boonville, Ind.
Prev. School: Transylvania University

Heather Metzger begins her first season as EKU's student manager. Metzger pitched for two seasons for the Colonels.

In 2009 as a junior, she made seven appearances in the circle and earned a spot on the Ohio Valley Conference Commissioner's Honor Roll. In addition, she was selected as a 2008-09 Colonel Scholar.

Metzger went 1-1 in four appearances as a sophomore in 2008. The Boonville, Ind., native began her collegiate career at Transylvania University. She went 12-2 with a 1.16 ERA and earned all-region honors in her only season with the Pioneers.

As a prep player, Metzger was named to the 2005 all-state first team. She posted a record of 44-11 and threw three no-hitters during her high school career.





PLAYER PROFILES



Jena Handley

Year: Senior

Ht.: 5-6 B/T: R/R

Position: Catcher

Hometown: Garden Grove, Calif.

Prev. School: Garden Grove High School

#19

AS A JUNIOR IN 2009

Third on the team with a .284 batting average, 18 RBIs and 17 runs scored ... second on the team with a .396 slugging percentage and three home runs ... led the squad with six doubles ... ranked as the 82nd toughest player in the nation to strikeout, striking out every 14.9 at bats (nine times in 134 at bats) ... had two or more hits nine times ... started 42 of the team's 44 games ... hit her first home run of the season and drove in a pair against Missouri-Kansas City (Feb. 14) ... went 2-for-3 with three runs scored against Sacred Heart (March 8) ... finished 3-for-3 with a home run, two runs scored and four RBIs against Kent State (March 25) ... was 3-for-4 with a run and an RBI at Morehead State (April 1) ... 2008-09 Colonel Scholar.

AS A SOPHOMORE IN 2008

A stellar sophomore season behind the dish allowed Handley to capture second team All-Ohio Valley Conference honors ... hit .312 with seven home runs, 33 RBIs and 27 runs ... the only player to start at catcher all season for the Colonels ... had a .487 slugging percentage and a .363 on-base percentage ... tied for the most runners thrown out attempting to steal (21) in the OVC ... second on the team in home runs, and third on the team in RBIs and slugging percentage ... had 11 multi-hit games and 11 multi-RBI games ... went 3-for-3 with two runs scored in the second game of the season, against Kennesaw State (Feb. 15) ... went 3-for-4 with three RBIs against Idaho State (March 8) ... turned a 2-1 ECU deficit into a 5-2 lead with a grand slam in the sixth inning against Southeast Missouri (March 15) ... the next day against the Redhawks, Handley went 3-for-3 with a run scored and two RBIs ... had three hits in four at bats, scored twice and drove in



two against Miami (April 1) ... hit a home run and drove in three runs against Jacksonville State (April 5) ... went 3-for-3 with a season-high three runs scored against Tennessee-Martin (April 12) ... in the second game of the doubleheader against UTM, Handley homered and drove in four runs.

AS A FRESHMAN IN 2007

Started 28 games and played in 35 games as a freshman ... finished her first collegiate season with a .184 batting average, seven runs and eight RBIs ... threw out two would-be base stealers ... scored a pair of runs against Charlotte on Feb. 17 ... went 2-for-3 with a run scored and one driven in against Southeast Missouri (April 1) ... scored twice while going 2-for-4 at Wright State (April 4).

HIGH SCHOOL

Played four years of varsity softball ... three-time all-league first team honoree ... named to the 2006 North/South All-Star team ... twice honored as the team's Offensive Player of the Year ... served as team captain ... posted a batting average of .344 in her senior campaign ... earned Scholar-Athlete honors all four years ... also played volleyball for three years.

PERSONAL

Daughter of Jack and Liz Handley ... has three siblings, Julie, Jacob and Josh ... born March 31, 1988 ... majoring in public relations.



JENA'S CAREER STATISTICS

	AVG	GP-GS	AB	R	H	RBI	2B	3B	HR	TB	SLG%	SB-A	BB	SO
2007	.184	35-28	76	7	14	19	2	0	1	19	.250	0-0	4	11
2008	.312	50-50	154	27	48	33	6	0	7	33	.487	1-1	11	16
2009	.284	42-42	134	17	38	18	6	0	3	53	.396	2-2	6	9
TOTAL	.275	127-120	364	51	100	59	14	0	11	147	.404	3-3	21	36

PLAYER PROFILES



Shyenne Hussey

Year: Senior

Ht.: 5-5 B/T: L/R

Position: Third Base

Hometown: Waimanalo, Hawai'i

Prev. School: Kailua High School

#32

AS A JUNIOR IN 2009

Earned first team All-Ohio Valley Conference honors for the second straight year ... became a three-time All-OVC honoree ... led the team and finished sixth in the conference with a .349 batting average ... had the second highest on-base percentage (.471) in the OVC ... was hit by a pitch nine times, which was the highest in the conference ... drew 19 walks ... batted .466 with a .584 on-base percentage, 10 runs and 18 RBIs against OVC competition ... her on-base percentage for the season was the 77th best in the nation ... led the Colonels with a .560 slugging percentage, 29 RBIs, six home runs and 61 total bases ... got off to a slow start, hitting just .217 with two runs scored and one RBI in EKU's first nine games ... batted .384 with 13 runs and 28 RBIs in the team's final 35 games ... hit her first home run of the season and drove in three runs against South Dakota (March 7) ... went 2-for-2 with two runs and four RBIs against Pennsylvania (March 8) ... homered, scored twice and drove in three runs against Austin Peay (April 4) ... finished 2-for-3 with a run and three RBIs at Tennessee State (April 18) ... hit a game-winning two-run home run in the bottom of the seventh of a 4-2 win over Tennessee-Martin (May 3), finishing the season-finale 3-for-4 ... 2008-09 Colonel Scholar.

AS A SOPHOMORE IN 2008

Earned first team All-Ohio Valley Conference honors ... ranked second in the OVC in RBIs (48), third in hitting (.393), third in walks (28) and fourth in on-base percentage (.531) ... 13th highest on-base percentage in the nation ... ranked 21st in the NCAA with an average of 0.98 RBIs per game ... led the team in eight offensive categories ... was hit by a pitch 13 times, the most in the conference ... hit nine home runs ... had 14 multi-hit games and 15 multi-RBI games ... hit safely in 11 straight games at one point during the season ... hit a grand slam in the third inning against Akron (Feb. 22) ... went 3-for-3 with three RBIs the next day against Ball State ... went 3-for-3 in her first game in her home state, against her home-state school, No. 15 Hawai'i ... had three hits against Tennessee State (March 21) ... went 1-for-1 and walked three times against Samford (March 29) ... was 4-for-4 with



two runs scored and an RBI against regular season conference champion Jacksonville State (April 6) ... hit her second grand slam of the season against Tennessee-Martin (April 12), finishing the game with six RBIs ... had three hits against Samford in the OVC tournament ... hit one home run in each of EKU's final three games of the season, including two OVC tournament games.

AS A FRESHMAN IN 2007

Earned second team All-OVC honors and was selected to the OVC All-Newcomer team as a freshman ... led the team in eight offensive categories, including hitting (.371), hits (65), RBIs (43), doubles (13), home runs (eight) and total bases (102) ... led the team with 18 multiple hit games and 12 multiple RBI games ... third best batting average in the OVC ... ranked seventh in the OVC in hits and RBIs ... went 2-for-3 with two runs and four RBIs in her second collegiate game, against Charlotte (Feb. 17) ... was a perfect 4-for-4 with a run scored and an RBI against Bucknell (Feb. 18) ... hit her first collegiate home run against Bowling Green (Feb. 23) ... went 3-for-3 against Southeast Missouri (March 31) ... was 4-for-4 with five RBIs against Wright State (April 4).

HIGH SCHOOL

Played four years of varsity softball ... named the 2006 all-state and all-league first team first baseman ... selected to the 2005 all-state second team and all-league first team ... helped team to state championship in 2003 ... posted a career batting average of .400 ... hit 12 home runs during high school career ... also played one year of volleyball.

PERSONAL

Daughter of Shad and Sunday Hussey ... has three siblings, Shylena, Kimeona and Sheena ... born June 26, 1988 ... majoring in criminal justice.



SHYENNE'S CAREER STATISTICS

	AVG	GP-GS	AB	R	H	RBI	2B	3B	HR	TB	SLG%	SB-A	BB	SO
2007	.371	55-55	175	24	65	43	13	0	8	102	.583	0-0	17	15
2008	.393	49-49	135	28	53	48	9	0	9	89	.659	0-0	28	15
2009	.349	40-40	109	15	38	29	5	0	6	61	.560	0-0	19	12
TOTAL	.372	144-144	419	67	156	120	27	0	26	252	.601	0-0	64	42



PLAYER PROFILES



Ashley Dollins

Year: Junior
Ht.: 5-10 B/T: R/R
Position: Catcher
Hometown: Berea, Ky.
Prev. School: Rockcastle County High School

#17

AS A SOPHOMORE IN 2009

Played in 33 games and started 31 times as the designated player or catcher ... batted .221 with nine RBIs and four runs ... had five doubles and one triple ... recorded two hits on three occasions ... drove in three runs in EKU's 6-4 win over Morehead State (April 1) ... drove in a pair of runs against Austin Peay (April 5) ... went 2-for-3 against Miami (April 28) ... 2008-09 Colonel Scholar.

AS A FRESHMAN IN 2008

Appeared in only two games as a freshman ... had just one at bat ... scored a run against Appalachian State (Feb. 16) after entering the game as a pinch runner.

HIGH SCHOOL

Earned all-state recognition ... four-time all-region selection ... five-time all-district ... earned six softball letters and two golf letters ... two-time East/West All-Star.

PERSONAL

Daughter of Clay and Paula Dollins ... has one sister, Laura ... born March 30, 1989 ... majoring in biology/pre-med.



ASHLEY'S CAREER STATISTICS

	AVG	GP-GS	AB	R	H	RBI	2B	3B	HR	TB	SLG%	SB-A	BB	SO
2008	.000	2-0	1	1	0	0	0	0	0	0	.000	0-0	0	1
2009	.221	33-31	86	4	19	9	5	1	0	26	.302	0-1	6	13
TOTAL	.218	35-31	87	5	19	9	5	1	0	26	.299	0-1	6	14



Cassi Gibson

Year: Junior
Ht.: 5-8 B/T: L/R
Position: Outfield
Hometown: Brawley, Calif.
Prev. School: Brawley Union High School

#1

AS A SOPHOMORE IN 2009

Started all 44 games ... posted the fourth best batting average (.280) on the team ... led the team with 30 runs scored ... drove in 10 runs ... finished the season with a .335 on-base percentage ... had 15 stolen bases in 22 attempts ... batted .309 with 14 runs scored against Ohio Valley Conference teams ... went 2-for-3 with a run scored and an RBI against Georgia State (Feb. 21) ... scored three times and had a stolen base against Pennsylvania (March 8) ... went 3-for-4 with three runs scored, three RBIs and two stolen bases against Kent State (March 25) ... was 3-for-3 with two runs scored and an RBI at Southeast Missouri (April 25).

AS A FRESHMAN IN 2008

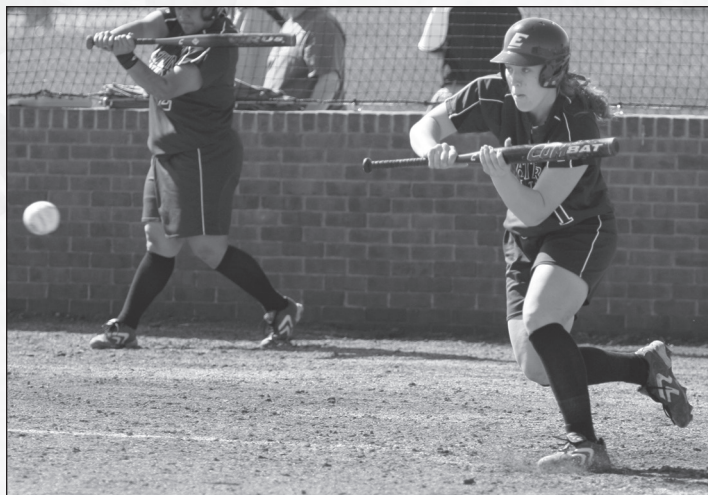
Earned a spot on the Ohio Valley Conference All-Newcomer team ... in her first collegiate season, Gibson hit .305 with 22 runs scored and seven RBIs ... played in 49 games and made 46 starts in the Colonel outfield ... posted a .377 on-base percentage ... had six stolen bases in eight attempts ... scored at least one run in 20 of the 49 games she played in ... went 2-for-3 with a run and two RBIs in the first game of her collegiate career, against Kennesaw State on Feb. 15 ... had three hits in four at bats against Southeast Missouri on March 16 ... in the second game of the doubleheader that day against SEMO, Gibson scored twice while going 2-for-3 ... scored twice against Tennessee-Martin on April 12 ... drove in two runs against Eastern Illinois on May 4.

HIGH SCHOOL

Earned four letters as a member of the Brawley Union High School softball team ... team MVP as a senior ... best offensive player award as a freshman ... earned four letters as a member of the school's volleyball team.

PERSONAL

Daughter of Johnny and Cindy Gibson ... has one sister, Brittani and three brothers, JJ, Nick and Thomas ... born Aug. 8, 1988 ... majoring in general studies/arts and sciences.



CASSI'S CAREER STATISTICS

	AVG	GP-GS	AB	R	H	RBI	2B	3B	HR	TB	SLG%	SB-A	BB	SO
2008	.305	49-46	131	22	40	7	4	1	0	46	.351	6-8	8	35
2009	.280	44-44	143	30	40	10	1	0	0	41	.287	15-22	7	22
TOTAL	.292	93-90	274	52	80	17	5	1	0	87	.318	21-30	15	57



PLAYER PROFILES



DeAnn Horswill

Year: Junior
Ht.: 5-4 B/T: R/R
Position: First Base
Hometown: Kailua, Hawai'i
Prev. School: Kalaheo High School

#20

AS A SOPHOMORE IN 2009

Played in 24 games and started eight times ... posted a .176 batting average, scored three runs and drove in three ... drew eight walks and posted a .483 on-base percentage ... went 2-for-3 and drove in two runs in ECU's 8-3 win over La Salle (March 11) ... had three walks in a game twice, against Butler (March 10) and at Southeast Missouri (April 15) ... 2008-09 Colonel Scholar.

AS A FRESHMAN IN 2008

Played in four games ... did not have a hit in two at bats.

HIGH SCHOOL

Two-time white division first team selection ... second team red division selection in 2007 ... 2005 Outstanding Athlete of the Year award ... earned four letters as a member of the softball team.

PERSONAL

Daughter of Reynolds and Harriet Horswill ... has three sisters, Rachel, Sarah and Sheree and two brothers, Adam and David ... born Jan. 9, 1989 ... majoring in recreation and parks.



DEANN'S CAREER STATISTICS

	AVG	GP-GS	AB	R	H	RBI	2B	3B	HR	TB	SLG%	SB-A	BB	SO
2008	.000	4-0	2	0	0	0	0	0	0	0	.000	0-0	0	2
2009	.176	24-8	17	3	3	3	0	0	0	3	.176	0-0	8	8
TOTAL	.158	28-8	19	3	3	3	0	0	0	3	.157	0-0	8	10



Stacye Toups

Year: Junior
Ht.: 5-11 B/T: R/R
Position: Pitcher
Hometown: Loveland, Ohio
Prev. School: Loveland High School

#13

AS A SOPHOMORE IN 2009

Made 34 appearances in the circle ... started 16 games ... tossed three complete games ... went 4-10 ... struck out 41 batters and issued 62 walks in 83 and two-thirds innings of work ... allowed 55 earned runs and posted a 4.60 ERA ... had the fourth most appearances in the Ohio Valley Conference ... tied for the most relief appearances in the conference ... allowed just one unearned run over seven innings in a 4-1 win over Missouri-Kansas City (Feb. 14) ... struck out four and gave up one unearned run over seven innings of a 7-1 win against South Dakota (March 7) ... 2008-09 Colonel Scholar.

AS A FRESHMAN IN 2008

Made an immediate impact in the circle for the Colonels ... earned a spot on the Ohio Valley Conference All-Newcomer team after leading ECU with 11 wins and a 3.13 ERA ... had the 12th best ERA in the OVC ... made a team-high 32 appearances and started 26 games ... had seven complete games, including two complete game shutouts ... had two saves ... led the team with 123 innings pitched ... allowed 121 hits and 55 earned runs ... struck out 82 batters while issuing only 56 walks ... opponents hit .257 against the freshman ... earned her first collegiate victory in her third game, tossing five innings of two-hit ball and allowing one run in an 11-1 win over Akron (Feb. 22) ... allowed only one run on three hits in six innings against No. 15 Hawai'i (March 9) ... allowed one run on four hits and struck out five in a complete game win over Tennessee State (March 21) ... struck out a season-high seven batters and allowed only one run on two hits while pitching six innings against Morehead State (March 25) ... earned her first complete game shutout against Tennessee-Martin (April 13) ... tossed another complete game shutout against Eastern Illinois (May 3), tying a season-high with seven strikeouts.

HIGH SCHOOL

Earned first team all-city, all-league and all-conference honors ... team MVP ... team Most Valuable Defensive Player award ... set school records for ERA (0.51) and most innings pitched in one game (17) ... had a career batting average of .339 ... on the mound she went 28-11 with 419 strikeouts in 273 innings ... earned three softball letters ... also a member of the Loveland High School volleyball team.

PERSONAL

Daughter of Bill and Mary Toups ... has one sister, April, and one brother, Colton ... born May 16, 1989 ... majoring in forensic science.



STACYE'S CAREER STATISTICS

	W-L	PCT	ERA	GS	CG	SV	SH	IP	H	R	ER	BB	SO	WP	2B	3B	HR
2008	11-7	.611	3.13	26	7	2	2	123.0	121	71	55	56	82	13	12	0	17
2009	4-10	.286	4.60	16	3	0	0	83.2	89	73	55	62	41	14	8	1	15
TOTAL	15-17	.469	3.73	42	10	2	2	206.2	210	144	110	118	123	27	20	1	32



PLAYER PROFILES



Samm Daniels

Year: Sophomore
Ht.: 5-3 B/T: L/R
Position: Utility
Hometown: Hamilton, Ohio
Prev. School: Fairfield High School

#8

AS A FRESHMAN IN 2009

Played in two games during her first season with the Colonels ... started as the designated player in the second game of a doubleheader against Tennessee-Martin (May 2) ... went 1-for-3 against UTM ... finished the season with one hit in four at bats.

HIGH SCHOOL

Led Fairfield High School to four sectional and four district championships ... the Indians finished as the region runner-up four years straight ... earned the Fairfield Coach's 110% award as a junior.

PERSONAL

Daughter of Lenny and Teresa Daniels ... has one brother, Jake ... born Feb. 2, 1990 ... majoring in physical education.



Christina Datko

Year: Sophomore
Ht.: 5-1 B/T: R/R
Position: Utility
Hometown: San Diego, Calif.
Prev. School: Scripps Ranch High School

#18

AS A FRESHMAN IN 2009

Appeared in 29 games and started 16 times as a freshman ... batted .122 and scored three runs ... started at second base in the second game of a doubleheader against Eastern Illinois (March 28) and went 2-for-3 with a run scored ... scored twice in a 14-6 win over Kent State (March 25) ... entered the game as a pinch runner five times ... was successful in both stolen base attempts during the 2009 season ... started 15 times at second base and once in the outfield ... 2008-09 Colonel Scholar.

HIGH SCHOOL

Made two appearances in the CIF finals at Scripps Ranch High School ... two-time scholar athlete ... selected first team All-Eastern League and second team All-Division II as a senior ... batted .325 with a .429 on-base percentage and a .488 slugging percentage as a senior ... belted three home runs her senior season ... was also a varsity cheerleader for three years.

PERSONAL

Daughter of Keith and Rita Datko ... has three sisters, Alexia, Marisa and Bryanna ... her sister Alexia is a pitcher for the College of Charleston ... born Nov. 6, 1990 ... major is undecided.



SAMM'S CAREER STATISTICS

	AVG	GP-GS	AB	R	H	RBI	2B	3B	HR	TB	SLG%	SB-A	BB	SO
2009	.250	2-1	4	0	1	0	0	0	0	1	.250	0-0	0	0
TOTAL	.250	2-1	4	0	1	0	0	0	0	1	.250	0-0	0	0

CHRISTINA'S CAREER STATISTICS

	AVG	GP-GS	AB	R	H	RBI	2B	3B	HR	TB	SLG%	SB-A	BB	SO
2009	.122	29-16	41	3	5	0	0	0	0	5	.122	2-2	3	13
TOTAL	.122	29-16	41	3	5	0	0	0	0	5	.122	2-2	3	13

PLAYER PROFILES



Diane Gallagher

Year: Sophomore
Ht.: 5-5 B/T: L/R
Position: Outfield
Hometown: Atwater, Calif.
Prev. School: Buhach Colony High School

#3

AS A FRESHMAN IN 2009

Earned first team All-Ohio Valley Conference honors in her first season as a Colonel ... was also selected to the OVC All-Newcomer team ... second in the OVC with 24 stolen bases ... was not thrown out attempting to steal ... ranked 27th in the nation with an average of 0.55 stolen bases per game ... second on the team with a .301 batting average ... started all 44 of the team's games ... led the team with 11 multiple hit games ... led the team with 46 hits ... second on the team with 27 runs scored ... had one home run and 11 RBIs ... batted .311 with 13 runs and 13 stolen bases against conference teams ... recorded a hit and scored a run in her first collegiate game, against Furman (Feb. 13) ... went 2-for-3 with a run scored and two stolen bases against Georgetown (Feb. 22) ... went 2-for-4 with a stolen base and a season-high three runs scored against South Dakota (March 7) ... went 3-for-3 with a pair of runs and a pair of stolen bases against Pennsylvania (March 8) ... her first collegiate home run was a walk-off solo shot in an extra inning win over Morehead State (March 17) ... was 3-for-3 with two runs and two RBIs against Kent State (March 25) ... went 3-for-4 with an RBI and a season-best three stolen bases against Southeast Missouri (April 25) ... earned a spot on the Ohio Valley Conference Commissioner's Honor Roll ... 2008-09 Colonel Scholar.

HIGH SCHOOL

Was a four-year all-conference and all-area selection for Buhach Colony High School ... earned team MVP honors as a freshman ... led Buhach Colony to a pair of Central California Conference championships as a junior and a senior ... she was also a four-year member of the school's volleyball team ... received Buhach Colony's Female Athlete Sportsmanship Award in the spring of 2008 ... on the club level, Gallagher's Atwater, Calif., Yammers finished second at the ASA Nationals in 2004 and claimed the national championship in 2005 ... in the summer of 2008, Gallagher went 17-for-32 (.531) at the Denver, Colo., 18 U Gold Firecracker Tournament and her team, the Running Rebels Gold, finished eighth out of 140 participants.

PERSONAL

Daughter of Mike and Chris Gallagher ... has three sisters, Cara, Lindsey and Katie ... born Nov. 12, 1990 ... majoring in nursing.



DIANE'S CAREER STATISTICS

	AVG	GP-GS	AB	R	H	RBI	2B	3B	HR	TB	SLG%	SB-A	BB	SO
2009	.301	44-44	153	27	46	11	2	1	1	53	.346	24-24	8	22
TOTAL	.301	44-44	153	27	46	11	2	1	1	53	.346	24-24	8	22



Brittany Mockbee

Year: Sophomore
Ht.: 5-10 B/T: R/R
Position: Pitcher
Hometown: Louisville, Ky.
Prev. School: Ballard High School

#15

AS A FRESHMAN IN 2009

Pitched in 18 games and started in the circle 13 times before an injury ended her freshman season in April ... made her first collegiate start against Furman (Feb. 13) and struck out four batters ... earned her first collegiate win against Pennsylvania (March 8) after allowing two runs and striking out five batters in five innings ... struck out a season-high six batters and allowed only one earned run in seven innings against Kent State (March 25) ... finished the season with 47 strikeouts in 59 innings of work ... pitched three complete games ... earned the save against Kent State (March 25).

HIGH SCHOOL

Was a three-time first team all-state selection at Ballard High School ... in addition to her success on the field, Mockbee was a four-year academic all-state selection ... was a three-time all-region selection and was selected as the team MVP two times ... a four-year starter for a program that doesn't typically start freshmen ... led the Bruins to four straight district titles and regional championships in 2005 and 2008 ... totaled 679 strikeouts over four seasons, including 220 her senior season ... posted a 0.89 ERA her sophomore season, a 0.76 ERA her junior season and a 0.56 ERA her senior season ... batted .425 as a sophomore, .454 as a junior and .465 as a senior ... also a four-year member of the varsity volleyball team ... earned best offensive player award in 2005 and 2006 and most outstanding player award in 2007.

PERSONAL

Daughter of Tom Mockbee and Mary Farley ... has two sisters, Brandise and Hannah ... her mom Mary was a member of the EKU club softball team, before the sport was elevated to varsity status ... born August 2, 1990 ... major is undecided.



BRITTANY'S CAREER STATISTICS

	W-L	PCT	ERA	GS	CG	SV	SH	IP	H	R	ER	BB	SO	WP	2B	3B	HR
2009	1-7	.125	4.27	13	3	1	0	59.0	76	45	36	29	47	3	7	1	4
TOTAL	1-7	.125	4.27	13	3	1	0	59.0	76	45	36	29	47	3	7	1	4



PLAYER PROFILES



Larkyn Wood

Year: Sophomore
Ht.: 5-6 B/T: R/R
Position: Second Base
Hometown: Georgetown, Ky.
Prev. School: Scott County High School

#6

AS A FRESHMAN IN 2009

Played in 31 games and started 28 times ... started 25 times at short-stop ... batted .231 with 10 runs scored and four RBIs ... was successful in four out of five stolen base attempts ... walked nine times and posted a .324 on-base percentage ... recorded her first collegiate hit against Missouri-Kansas City (Feb. 14) ... had two hits four times ... went 2-for-3 with a run and two RBIs against Sacred Heart (March 8) ... went 2-for-3 and scored three times against Kent State (March 25) ... drew a pair of walks and had a stolen base in her second game of the season, against Auburn (Feb. 13) ... 2008-09 Colonel Scholar.

HIGH SCHOOL

Two-time all-state selection ... four-time all-district and all-region ... ended her career ranked second in state history with 72 doubles, eighth in the state with 19 career home runs and ninth with 171 career RBIs ... as a senior at Scott County High School, Wood batted .450 with eight home runs, 17 doubles and 21 stolen bases on her way to earning 11th Region Player of the Year honors ... as a junior, Wood batted .455 with 21 doubles, six home runs, 45 RBIs and 45 runs ... was named to the Kentucky State All-Tournament Team as a junior while helping the Cardinals reach the final four ... Scott County finished with a 37-8 record in 2007 ... was chosen as an East/West All-Star in 2007 and 2008 ... she played high school softball for six years.

PERSONAL

Daughter of Mike and Precia Wood ... born July 5, 1990 ... major is undecided.



LARKYN'S CAREER STATISTICS

	AVG	GP-GS	AB	R	H	RBI	2B	3B	HR	TB	SLG%	SB-A	BB	SO
2009	.231	31-28	65	10	15	4	1	0	0	16	.246	4-5	9	20
TOTAL	.301	44-44	153	27	46	11	2	1	1	53	.346	24-24	8	22



Nikki Bruce

Year: Freshman
Ht.: 5-5 B/T: R/R
Position: Second Base
Hometown: Overland Park, Kan.
Prev. School: Shawnee Mission West HS

#14

HIGH SCHOOL

Earned second team All-Sunflower League and second team All-Sun County her senior season at Shawnee Mission West High School ... batted .372 with a .487 on-base percentage during her senior campaign ... batted .426 with a .563 on-base percentage as a junior in 2008 ... earned second team All-Sunflower League and was a varsity team co-captain ... batted .350 and was selected second team All-Sunflower League and honorable mention All-Sun County as a sophomore.

PERSONAL

Daughter of John and Rhonda Bruce ... has one sister, Courtney ... born June 27, 1991 ... her dad John was a collegiate track athlete at Northeast Missouri State University ... plans to major in history.



Melissa Costa

Year: Freshman
Ht.: 5-7 B/T: L/R
Position: Outfield
Hometown: Turlock, Calif.
Prev. School: Turlock High School

#00

HIGH SCHOOL

Was a first team all-conference selection as a junior and senior at Turlock High School ... helped the Bulldogs finish second in the league in 2009 ... team captain her senior season ... earned team MVP honors as a member of the Turlock High volleyball team ... also played basketball.

PERSONAL

Daughter of John and Michelle Costa ... has one brother, Ty ... born Jan. 8, 1991 ... her brother Ty was a collegiate wrestler at Dana College ... major is undecided.



Noelani Esperas

Year: Junior
Ht.: 5-2 B/T: R/R
Position: Pitcher
Hometown: Kane'ohe, Hawai'i
Prev. School: Eastern Arizona College

#4

AS A SOPHOMORE IN 2009 (at Eastern Arizona College)

Earned first team All-America honors ... selected first team All-Arizona Community College Athletic Conference (ACCAC) ... posted a 27-6 record and a 1.40 ERA ... struck out 255 batters in 205 innings ... batted .372 with six home runs and 30 RBI ... led the team to a second place conference finish ... in her two seasons at Eastern Arizona, the team posted a 96-24 record.

AS A FRESHMAN IN 2008 (at Eastern Arizona College)

Earned second team All-ACCAC honors after striking out 153 batters in 173 innings of work ... posted a 21-5 record with a 2.20 ERA ... helped Eastern Arizona capture the ACCAC conference championship, the regional title and finish third in the NJCAA tournament.

PLAYER PROFILES



HIGH SCHOOL

Earned first team all-state honors as a senior at Kamehameha Schools/Kapalama Campus ... led team to two ILH championships ... was named ILH MVP her senior season ... helped the Warriors finish third in the state her sophomore season.

PERSONAL

Daughter of John Esperas ... has two brothers, Cory and Kawena, and one sister, Sierra ... born July 3, 1988 ... majoring in criminal justice.



Mea Flores

Year: Freshman
Ht.: 5-5 B/T: R/R
Position: Pitcher
Hometown: Torrance, Calif.
Prev. School: Torrance High School

#9

HIGH SCHOOL

Three-time first team All-Pioneer League at Torrance High School ... posted a 16-11 record with a 0.86 ERA and 148 strikeouts her senior season ... earned a number of postseason accolades, including Pioneer League Most Outstanding Player, Daily Breeze All-Area team, All-CIF/Southern Section team, team MVP and South Bay Athletic Club All-Star team ... helped the Tartars capture the Pioneer League championship as a junior with an 11-3 record, a 1.12 ERA and 81 strikeouts ... over her final two seasons she struck out 229 batters while only walking 49 ... went 5-2 with a 0.61 ERA as a sophomore, earning the first of three straight first team all-league honors.

PERSONAL

Daughter of Tony and Rosanna Flores ... has one brother, Tony Jr., and one sister, Seleena ... born Oct. 17, 1990 ... her sister Seleena was a collegiate softball player at New Mexico Highlands University ... plans to major in psychology.



Raquel Howes

Year: Freshman
Ht.: 5-6 B/T: L/R
Position: Shortstop
Hometown: Colorado Springs, Colo.
Prev. School: Liberty High School

#23

HIGH SCHOOL

Earned first team all-state honors her senior season at Liberty High School after leading the state of Colorado with 13 home runs ... team captain and team MVP ... batted .561 while leading LHS to the Metro League district championship for the second consecutive season ... earned first team all-state recognition after batting .438 with 27 runs scored as a junior ... 2007-08 and 2008-09 NFCA All-American Scholar Athlete ... CHSAA Academic All-State honorable mention.

PERSONAL

Daughter of Rand and Maria Howes ... has one brother, Mathew ... born June 16, 1991 ... plans to major in sports management.



Cheyenne Pounds

Year: Freshman
Ht.: 5-6 B/T: R/R
Position: Catcher
Hometown: El Paso, Texas
Prev. School: Saginaw High School

#5

HIGH SCHOOL

Was a four-year letter winner ... played three seasons at Liberty High

School in Colorado Springs, Colo., before playing her senior season at Saginaw High School in Saginaw, Texas ... at LHS, she earned 4A Metro All-League honors as a freshman and as a junior ... her junior season she led the Lancers to the 4A Metro League and district championships ... batted .379 as a freshman, .282 as a sophomore and .381 her junior season.

PERSONAL

Daughter of Chuck and Denise Pounds ... has one brother, Jax, and two sisters, Mandy and Kori ... born March 18, 1991 ... plans to major in accounting.



Kristin Perry

Year: Freshman
Ht.: 5-7 B/T: R/R
Position: Pitcher
Hometown: Lexington, Ky.
Prev. School: Woodford County High School

#7

HIGH SCHOOL

Totaled more than 1,200 strikeouts for Woodford County High School during her career ... led WCHS to a 20-7 record her senior season and helped the team advance to the semifinals of the 11th Region tournament for the third time in her career ... tossed a no-hitter and struck out nine batters in the district championship game against Franklin County ... earned district tournament MVP honors after being selected to the all-district and all-district tournament teams ... as a junior in 2008, Perry led WCHS to an 18-9 record while earning all-district and all-district tournament recognition ... as a sophomore she led the Lady Yellowjackets to a district championship and the semifinals of the region tournament and was selected all-district, all-district tournament, district tournament MVP and all-region tournament ... during her freshman season in 2006, Perry helped Woodford County capture the 11th Region championship ... the Lady Yellowjackets finished the season 21-16 after winning the district championship, the region title and a pair of games in the state tournament ... was named MVP of the region tournament in addition to earning all-district, all-district tournament, district tournament MVP and all-region tournament honors.

PERSONAL

Daughter of Steve and Jennifer Perry ... has one brother, James, and one sister, Kathryn ... born Sept. 26, 1990 ... plans to major in nursing.



Aimee Spathias

Year: Freshman
Ht.: 5-9 B/T: L/R
Position: Outfield
Hometown: Glendora, Calif.
Prev. School: Charter Oak High School

#22

HIGH SCHOOL

Was a four-time scholar-athlete award winner at Charter Oak High School ... batted .351 with 24 runs scored her senior season ... earned all-league honors her junior season after batting .349 with three home runs and 16 RBIs ... as a freshman, Spathias posted five home runs and 16 stolen bases.

PERSONAL

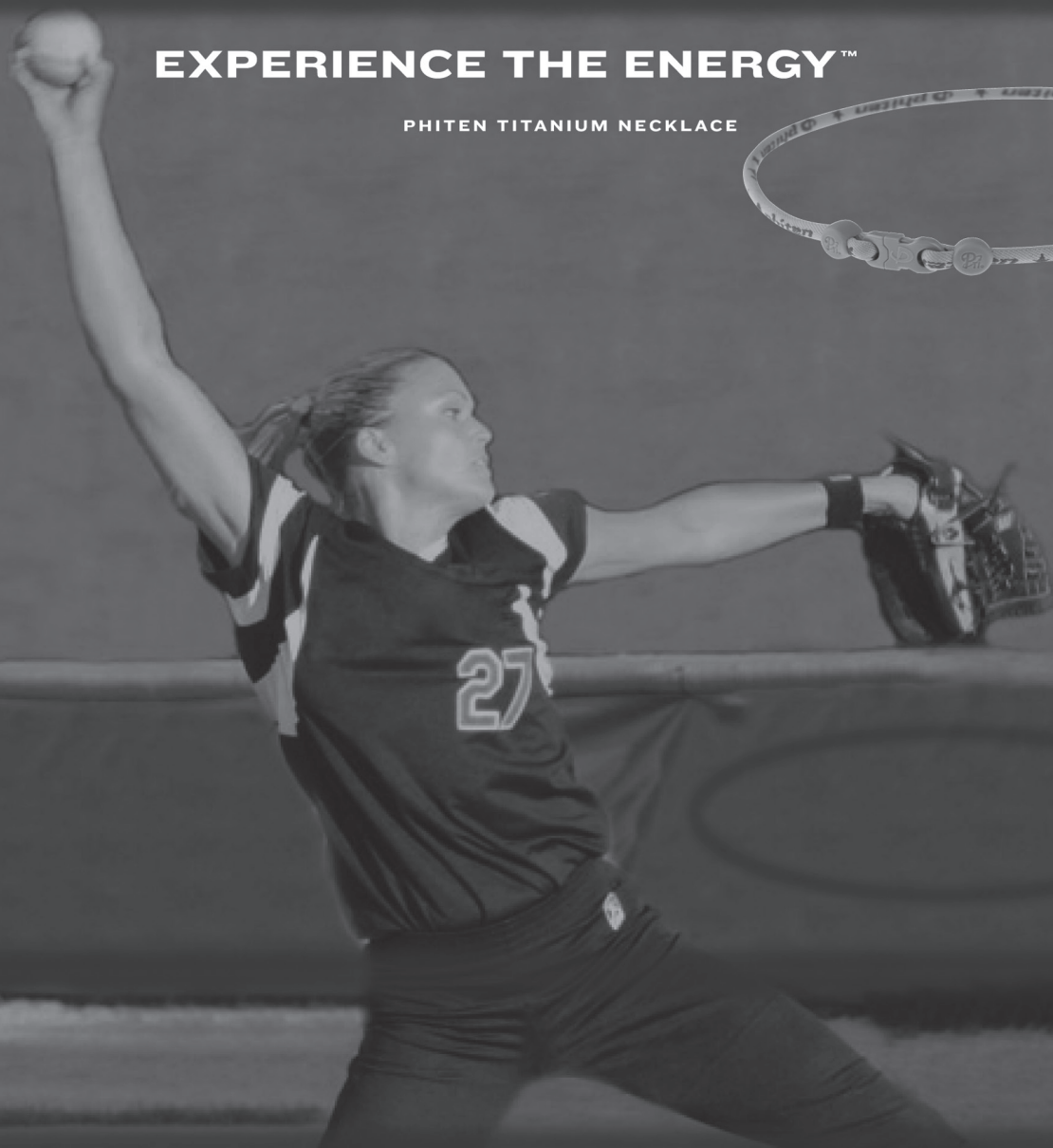
Daughter of Adonis and Laura Spathias ... has two sisters, Hanae and Carissa ... born Feb. 8, 1991 ... graduated 26th in a class of 456 students ... her uncle Hector Spathias played collegiate baseball at the University of California ... plans to major in mathematics teaching.

EASTERN KENTUCKY
COLONELS™

phiten

EXPERIENCE THE ENERGY™

PHITEN TITANIUM NECKLACE



JENNIE FINCH



2009 STATISTICS

Record: 17-27 • OVC Record: 8-13 • Home: 4-12 • Away: 5-9 • Neutral: 8-6

BATTING

No.	Player	AVG	GP-GS	AB	R	H	2B	3B	HR	RBI	TB	SLG%	BB	HBP	SO	GDP	OB%	SF	SH	SB-ATT	PO	A	E	FLD%
32	Shyenne Hussey	.349	40-40	109	15	38	5	0	6	29	61	.560	19	9	12	1	.471	3	0	0-0	34	86	3	.976
3	Diane Gallagher	.301	44-44	153	27	46	2	1	1	11	53	.346	8	2	22	0	.344	0	2	24-24	61	2	2	.969
19	Jena Handley	.284	42-42	134	17	38	6	0	3	18	53	.396	6	1	9	2	.315	2	3	2-2	180	15	0	1.000
1	Cassi Gibson	.280	44-44	143	30	40	1	0	0	10	41	.287	7	5	22	0	.335	0	2	15-22	50	4	6	.900
10	Pam Webber	.277	40-40	112	15	31	3	0	1	14	37	.330	12	1	14	1	.352	0	4	15-16	50	3	2	.964
14	Kalyn Fox	.267	42-42	116	14	31	6	0	1	20	40	.345	7	2	21	0	.315	2	5	2-3	214	30	6	.976
4	Amber Lenz	.209	33-29	91	11	19	4	2	0	8	27	.297	9	1	10	2	.284	1	3	2-3	64	37	2	.981
0	Erin Luther	.234	37-23	64	11	15	0	0	0	3	15	.234	12	1	12	1	.364	0	2	2-7	37	42	8	.908
6	Larkyn Wood	.231	31-28	65	10	15	1	0	0	4	16	.246	9	0	20	0	.324	0	1	4-5	43	47	12	.882
17	Ashley Dollins	.221	33-31	86	4	19	5	1	0	9	26	.302	6	1	13	0	.277	1	3	0-1	38	7	1	.978
18	Christina Datko	.122	29-16	41	3	5	0	0	0	0	5	.122	3	0	13	0	.182	0	3	2-2	26	18	5	.898
8	Samm Daniels	.250	2-1	4	0	1	0	0	0	0	1	.250	0	0	0	0	.250	0	0	0-0	0	0	0	.000
20	DeAnn Horswill	.176	24-8	17	3	3	0	0	0	3	3	.176	8	3	8	0	.483	1	1	0-0	54	2	2	.966
7	Heather Metzger	.143	3-2	7	0	1	0	0	0	0	1	.143	0	0	2	0	.143	0	0	0-0	1	4	0	1.000
25	Nikki Laubecher	.000	7-5	14	0	0	0	0	0	0	0	.000	1	0	7	0	.067	0	0	0-0	8	0	1	.889
21	Brittani Gibson	.000	4-2	6	0	0	0	0	0	0	0	.000	2	0	2	1	.250	0	0	0-0	0	0	0	.000
15	Brittany Mockbee	.000	2-1	1	0	0	0	0	0	0	0	.000	0	0	1	0	.000	0	0	0-0	4	11	1	.938
12	Jodi Pence	.000	1-0	1	0	0	0	0	0	0	0	.000	0	0	0	0	.000	0	0	0-0	1	1	0	1.000
Totals		.259	44-44	1164	160	302	33	4	12	129	379	.326	109	26	188	8	.334	10	29	68-85	874	341	53	.958
Opponents		.291	44-44	1170	226	341	43	2	34	201	490	.419	148	17	178	4	.376	9	48	50-60	885	377	66	.950

LOB - Team (297), Opp (296). DPs turned - Team (11), Opp (17). IBB - Team (3), Hussey, S. 2, Handley, J. 1, Opp (2). Picked off - Handley, J. 1

PITCHING

No.	Player	ERA	W-L	APP	GS	CG	SHO/CBO	SV	IP	H	R	ER	BB	SO	2B	3B	HR	AB	B/Avg	WP	HBP	BK	SFA	SHA
14	Kalyn Fox	2.68	7-2	20	2	0	0/1	0	52.1	58	31	20	15	28	7	0	3	204	.284	0	3	0	3	10
16	Chelsea Butler	3.32	5-7	23	13	2	1/1	1	84.1	98	58	40	33	57	14	0	10	348	.282	2	3	1	3	7
15	Brittany Mockbee	4.27	1-7	18	13	3	0/1	1	59.0	76	45	36	29	47	7	1	4	241	.315	3	5	1	1	15
13	Stacye Touts	4.60	4-10	34	16	3	0/1	0	83.2	89	73	55	62	41	8	1	15	322	.276	14	3	0	2	15
7	Heather Metzger	4.57	0-0	7	0	0	0/0	0	7.2	11	11	5	3	3	3	0	2	33	.333	0	2	0	0	0

25	Nikki Laubecher	0.00	0-0	1	0	0	0/0	0	0.0	0	0	0	1	0	0	0	0	.000	0	0	1	0	0	0
12	Jodi Pence	12.92	0-1	3	0	0	0/0	0	4.1	9	8	8	5	2	4	0	0	22	.409	0	1	0	0	1

PB - Team (9), Handley, J. 7, Dollins, A. 2, Opp (8). Pickoffs - Team (0), Opp (1). SBA/ATT - Handley, J. (37-45), Touts, S. (17-21), Butler, C. (16-20), Dollins, A. (12-14), Mockbee, B. (12-13), Fox, K. (3-4) Metzger, H. (2-2).



Kalyn Fox

FIELDING

No.	Player	C	PO	A	E	FLD%	DPS	SBA	CSB	SBA%	PB	CI
19	Jena Handley	195	180	15	0	1.000	0	37	8	.822	7	0
16	Chelsea Butler	17	7	10	0	1.000	0	16	4	.800	0	0
7	Heather Metzger	5	1	4	0	1.000	0	2	0	1.000	0	0
12	Jodi Pence	2	1	1	0	1.000	0	0	0	-	0	0
4	Amber Lenz	103	64	37	2	.981	3	0	0	-	0	0
17	Ashley Dollins	46	38	7	1	.978	0	12	2	.857	2	0
14	Kalyn Fox	250	214	30	6	.976	4	3	1	.750	0	0
32	Shyenne Hussey	123	34	86	3	.976	4	0	0	-	0	0
3	Diane Gallagher	65	61	2	2	.969	0	0	0	-	0	0
20	DeAnn Horswill	58	54	2	2	.966	3	0	0	-	0	0
10	Pam Webber	55	50	3	2	.964	0	0	0	-	0	0
15	Brittany Mockbee	16	4	11	1	.938	1	12	1	.923	0	0
13	Stacye Touts	26	2	22	2	.923	0	17	4	.810	0	0
0	Erin Luther	87	37	42	8	.908	3	0	0	-	0	0
1	Cassi Gibson	60	50	4	6	.900	0	0	0	-	0	0
18	Christina Datko	49	26	18	5	.898	1	0	0	-	0	0
25	Nikki Laubecher	9	8	0	1	.889	1	0	0	-	0	0
6	Larkyn Wood	102	43	47	12	.882	3	0	0	-	0	0
21	Brittani Gibson	0	0	0	0	.000	0	0	0	-	0	0
8	Samm Daniels	0	0	0	0	.000	0	0	0	-	0	0
Totals		1268	874	341	53	.958	11	50	10	.833	9	0
Opponents		1328	885	377	66	.950	17	68	17	.800	8	0

2009 RESULTS

Date	Opponent	Score	R-H-E	R-H-E	Inns	Overall	OVC	Pitcher Of Record	Attend	Time
Feb. 13	vs. Furman#	L, 2-9	2-5-1	9-9-2	7	0-1	0-0	MOCKBEE, B. (L 0-1)	125	2:08
Feb. 13	at Auburn#	L, 1-7	1-4-0	7-5-1	7	0-2	0-0	TOUPS, S. (L 0-1)	235	2:22
Feb. 14	vs. Missouri-Kansas City#	W, 4-1	4-6-2	1-6-1	7	1-2	0-0	TOUPS, S. (W 1-1)	67	1:48
Feb. 15	vs. Western Kentucky#	L, 0-13	0-1-2	13-11-1	5	1-3	0-0	BUTLER, C. (L 0-1)	87	1:18
Feb. 21	vs. Lipscomb%	L, 2-6	2-8-0	6-9-0	7	1-4	0-0	TOUPS, S. (L 1-2)	117	1:55
Feb. 21	at Georgia State%	L, 3-4	3-6-1	4-7-1	(9)	1-5	0-0	TOUPS, S. (L 1-3)	157	2:25
Feb. 22	vs. Georgetown Univ.%	W, 4-2	4-8-0	2-4-1	7	2-5	0-0	TOUPS, S. (W 2-3)	112	2:02
Feb. 22	vs. Georgetown Univ.%	W, 3-2	3-5-0	2-5-4	7	3-5	0-0	FOX, K. (W 1-0)	134	1:53
Mar. 7	vs. IPFW^	L, 0-2	0-6-1	2-3-1	7	3-6	0-0	MOCKBEE, B. (L 0-2)	100	1:39
Mar. 7	vs. South Dakota^	W, 7-1	7-8-1	1-3-5	7	4-6	0-0	TOUPS, S. (W 3-3)	100	1:40
Mar. 8	vs. Sacred Heart^	W, 13-1	13-13-0	1-5-3	6	5-6	0-0	TOUPS, S. (W 4-3)	100	1:54
Mar. 8	vs. Pennsylvania^	W, 10-2	10-13-0	2-6-1	5	6-6	0-0	MOCKBEE, B. (W 1-2)	100	1:39
Mar. 10	vs. Butler University^	L, 7-8	7-8-3	8-8-3	7	6-7	0-0	TOUPS, S. (L 4-4)	100	2:08
Mar. 10	vs. Robert Morris^	L, 0-1	0-5-0	1-9-0	7	6-8	0-0	MOCKBEE, B. (L 1-3)	100	1:34
Mar. 11	vs. Yale University^	W, 6-5	6-7-1	5-6-2	7	7-8	0-0	FOX, K. (W 2-0)	100	2:12
Mar. 11	vs. La Salle^	W, 8-3	8-8-1	3-5-3	7	8-8	0-0	FOX, K. (W 3-0)	100	2:10
Mar. 15	TENNESSEE TECH*	L, 1-13	1-3-1	13-13-0	5	8-9	0-1	TOUPS, S. (L 4-5)	105	1:45
Mar. 15	TENNESSEE TECH*	L, 3-4	3-8-1	4-8-0	7	8-10	0-2	MOCKBEE, B. (L 1-4)	-	2:05
Mar. 17	MOREHEAD STATE*	W, 2-1	2-3-0	1-6-3	(8)	9-10	1-2	BUTLER, C. (W 1-1)	125	2:12
Mar. 17	MOREHEAD STATE*	L, 7-12	7-9-3	12-15-3	7	9-11	1-3	MOCKBEE, B. (L 1-5)	-	2:18
Mar. 21	SIU EDWARDSVILLE	L, 0-6	0-3-2	6-10-0	7	9-12	1-3	TOUPS, S. (L 4-6)	125	1:46
Mar. 21	SIU EDWARDSVILLE	L, 1-4	1-7-4	4-7-3	7	9-13	1-3	FOX, K. (L 3-1)	-	2:02
Mar. 25	KENT STATE	L, 2-4	2-4-3	4-9-1	7	9-14	1-3	MOCKBEE, B. (L 1-6)	100	1:39
Mar. 25	KENT STATE	W, 14-6	14-14-0	6-6-5	5	10-14	1-3	BUTLER, C. (W 2-1)	-	2:04
Mar. 28	EASTERN ILLINOIS*	L, 0-5	0-1-1	5-8-1	7	10-15	1-4	TOUPS, S. (L 4-7)	100	1:47
Mar. 28	EASTERN ILLINOIS*	L, 7-13	7-10-2	13-10-2	7	10-16	1-5	MOCKBEE, B. (L 1-7)	-	2:29
Mar. 29	EASTERN ILLINOIS*	W, 4-1	4-6-2	1-5-1	7	11-16	2-5	BUTLER, C. (W 3-1)	50	1:53
Apr. 1	at Morehead State*	W, 6-4	6-9-1	4-10-1	7	12-16	3-5	BUTLER, C. (W 4-1)	177	2:03
Apr. 4	at Austin Peay*	W, 8-0	8-8-2	0-7-4	7	13-16	4-5	BUTLER, C. (W 5-1)	147	1:52
Apr. 4	at Austin Peay*	W, 1-0	1-8-0	0-3-2	7	14-16	5-5	FOX, K. (W 4-1)	-	1:38
Apr. 5	at Austin Peay*	L, 3-4	3-11-3	4-6-3	7	14-17	5-6	BUTLER, C. (L 5-2)	133	2:02
Apr. 11	JACKSONVILLE STATE*	L, 0-17	0-2-1	17-12-0	5	14-18	5-7	BUTLER, C. (L 5-3)	125	1:41
Apr. 11	JACKSONVILLE STATE*	L, 1-9	1-3-1	9-9-0	5	14-19	5-8	TOUPS, S. (L 4-8)	-	1:29
Apr. 18	at Tennessee State*	W, 7-2	7-9-0	2-3-1	7	15-19	6-8	FOX, K. (W 5-1)	137	2:08
Apr. 18	at Tennessee State*	W, 4-3	4-11-1	3-9-0	(11)	16-19	7-8	FOX, K. (W 6-1)	-	2:25
Apr. 22	at Kentucky	L, 0-7	0-2-1	7-10-0	7	16-20	7-8	BUTLER, C. (L 5-4)	237	1:43
Apr. 25	at Southeast Missouri*	L, 3-4	3-7-2	4-9-1	7	16-21	7-9	BUTLER, C. (L 5-5)	158	2:12
Apr. 25	at Southeast Missouri*	L, 5-8	5-14-2	8-12-0	7	16-22	7-10	FOX, K. (L 6-2)	-	1:50
Apr. 26	at Southeast Missouri*	L, 3-4	3-6-1	4-5-2	7	16-23	7-11	PENCE, J. (L 0-1)	109	1:57
Apr. 28	at Miami (Ohio)	L, 2-7	2-6-2	7-8-1	7	16-24	7-11	TOUPS, S. (L 4-9)	127	1:50
Apr. 29	at Louisville	L, 0-7	0-4-0	7-12-0	7	16-25	7-11	BUTLER, C. (L 5-6)	128	1:47
May 2	TENNESSEE-MARTIN*	L, 2-7	2-10-2	7-12-0	7	16-26	7-12	BUTLER, C. (L 5-7)	100	1:57
May 2	TENNESSEE-MARTIN*	L, 0-5	0-3-1	5-9-2	7	16-27	7-13	TOUPS, S. (L 4-10)	-	1:28
May 3	TENNESSEE-MARTIN*	W, 4-2	4-10-1	2-7-1	7	17-27	8-13	FOX, K. (W 7-2)	100	1:43

Auburn tournament

% Georgia State Tournament (Atlanta, Ga.)

^ Florida Rebel Games (Kissimmee, Fla.)

* Ohio Valley Conference Game

() extra inning game



BATTING RECORDS

Games Played

Season
62 Kelsey Anderson, Chanze Patterson, Alex Merrell, Katie Rolf, Amy Mayrhofer, Pam Webber (2006)

Career
217 Chanze Patterson (2005-08)

At Bats

Game
7 Kristie Davis at Morehead State (4/7/93)

Season
205 Jaime Parker (1995)

Career
712 Chanze Patterson (2005-08)

Runs Scored

Game
4 Five players (last - Chanze Patterson at UT Martin (4/12/08))

Season
46 Diana Barreras (2004)

Career
150 Chanze Patterson (2005-08)



Chanze Patterson

Hits

Game
5 three players (last - Adriel Foxley vs. Appalachian State (2/16/08))

Season
84 Jaime Parker (1995)

Career
235 Kim Sarrazin (1997-00)

Batting Average

Season
.420 Kim Sarrazin (1999)

Career
.392 Jaime Parker (1994-97)



Jamie Parker

On Base Percentage

Season
.531 Shyenne Hussey (2008)

Career
.450 Jaime Parker (1994-96)

Hitting Streak

21 Kim Sarrazin (5/3/98 - 3/20/99)

Doubles

Game
3 three players (four times) (last - Diana Barreras vs. Samford (4/9/04))

Season
17 Kelly Swanson (1998)

Career
46 Kim Sarrazin (1997-00)

Triples

Game
2 Amy Jones vs. Tennessee State (3/29/95)

Season
6 Kim Sarrazin (2000)

Career
13 Amy Jones (1993-95)

Home Runs

Game
2 14 players (last - Katie Rolf vs. Austin Peay (4/20/08))

Season
12 Kelly Swanson (1998)

Career
26 Adriel Foxley (2004-08)

Grand Slams

Game
1 eight times

(last - Katie Rolf vs. Austin Peay (4/20/08))

Runs Batted In

Game
8 Adriel Foxley vs. Appalachian State (2/16/08)

Season
50 Kelsey Anderson (2006)

Career
131 Adriel Foxley (2004-08)

Walks

Game
4 Angie Dunagan vs. Morehead State (5/4/96)

Season
32 Adriel Foxley (2008)

Career
107 Adriel Foxley (2004-08)

Strikeouts

Game
3 25 players

Season
43 Alex Merrell (2005)

Career
134 Amy Herrington (2000-03)

Stolen Bases

Game
4 Chanze Patterson vs. Tennessee State (4/29/06)

Season
31 Chanze Patterson (2006)

Career
70 Chanze Patterson (2005-08)

Stolen Base Percentage

Season
1.000 four players (last - Diane Gallagher, 24-24 in 2009)



Adriel Foxley

PITCHING RECORDS | HONORS



Games Played

Season	
42	Missy Phillips (1997)
Career	
144	Jonelle Csora (2000-03)

Games Started

Season	
36	Kelsey Anderson (2006)
Career	
105	Jonelle Csora (2000-03)

Complete Games

Season	
28	Jonelle Csora (2002)
Career	
75	Jonelle Csora (2000-03)

Innings Pitched

Game	
15.0	Katie Collins vs. Morehead State (4/7/99)
Season	
236.2	Missy Phillips (1997)
Career	
740.2	Jonelle Csora (2000-03)

Wins

Season	
25	Jonelle Csora (2002)
Career	
72	Jonelle Csora (2000-03)

Consecutive Wins

9	Jonelle Csora (2002)
---	----------------------

Earned Run Average

Season	
0.97	Jonelle Csora (2001)
Career (min. 300 innings)	
1.74	Jonelle Csora (2000-03)

Shutouts

Season	
11	Jonelle Csora (2001)
Career	
30	Jonelle Csora (2000-03)

Consecutive Shutouts

Season	
3	Kelsey Anderson (twice)

Strikeouts

Game	
15	Jonelle Csora



Jonelle Csora

vs. Tennessee State (4/28/02)

Season	
273	Jonelle Csora (2002)
Career	
754	Jonelle Csora (2000-03)

Lowest Opponent Batting Average

Season (min. 100 innings)	
.166	Jonelle Csora (2001)
Career	
.194	Jonelle Csora (2000-03)

Academic All-America

2002	Elise Burch, Third Team
------	-------------------------

Ohio Valley Conference

Player of the Year

1998	Kelly Swanson
2000	Kim Sarrazin
2004	Diana Barreras

Ohio Valley Conference

Pitcher of the Year

2002	Jonelle Csora
2003	Jonelle Csora

Ohio Valley Conference

Freshman of the Year

1995	Karen Scott
1998	Kerri Duncan
2001	Diana Barreras
2004	Kelsey Anderson

Ohio Valley Conference

Coach of the Year

2002	Jane Worthington
2004	Jane Worthington



Elise Burch - 3-Time All-OVC

All-Ohio Valley Conference

1994

Jamie Parker (DH), First Team
Katie Collins (OF), Second Team
Kelley Anderson (1B), HM
Annette Vivier (P), HM

1995

Jamie Parker (IF), First Team
Amy Jones (OF), First Team
Karen Scott (P), Second Team
Brandy Bevens (OF), HM

1996

Jamie Parker (UT), First Team
Heather Blancke (IF), Second Team
Jeanie King (SS), HM

1997

Amy DeSmet (UT), Second Team
Kim Sarrazin (C), HM
Missy Phillips (P), HM

1998

Kim Sarrazin (IF), First Team
Kelly Swanson (IF), First Team
Kerri Duncan (P), First Team
Karen Scott (P), First Team
Amy DeSmet (IF), Second Team
Nicole Wood (OF), Second Team

1999

Kim Sarrazin (IF), First Team
Amy DeSmet (IF), Second Team
Lisa Edwards (IF), Second Team
Kristina Mahon (P), HM

2000

Kim Sarrazin (IF), First Team
Amy Herrington (IF), Second Team
Renee LeBlanc (OF), HM
Kelly Pikula (OF), HM

2001

Elise Burch (OF), First Team
Jonelle Csora (P), First Team
Megan Mills (IF), Second Team
Sun Roesslein (IF), Second Team

Amy Herrington (UT), Second Team
Jessica Soto (P), Second Team
Diana Barreras, Honorable Mention
Kelli Bromley, Honorable Mention

2002

Diana Barreras (IF), First Team
Amy Herrington (IF), First Team
Kelli Bromley (OF), First Team
Elise Burch (OF), First Team
Jonelle Csora (P), First Team
Bethany Herrington (IF), Second Team
Jennifer Norris (UT), Second Team
Jen Christiansen, HM

2003

Jen Christiansen (OF), First Team
Jonelle Csora (P), First Team
Diana Barreras (IF), Second Team
Elise Burch (OF), Second Team
Kelli Bromley (OF), Second Team
Amy Herrington, HM
Bethany Herrington, HM
Jennifer Norris, Honorable Mention

2004

Diana Barreras (IF), First Team
Kelli Bromley (OF), First Team
Kelsey Anderson (P), First Team
Adriel Foxley (IF), Second Team
Jen Christiansen (OF), Second Team

2005

Adriel Foxley (IF), First Team

2006

Chanze Patterson (IF), Second Team
Kalyn Fox, All-Newcomer

2007

Chanze Patterson (IF), First Team
Shyenne Hussey (IF), Second Team
Shyenne Hussey, All-Newcomer

2008

Shyenne Hussey (IF), First Team
Chanze Patterson (IF), Second Team
Adriel Foxley (IF), Second Team



Kelli Bromley - 4-Time All-OVC

Jena Handley (C), Second Team
Amber Lenz, All-Newcomer
Stacye Troups, All-Newcomer
Erin Luther, All-Newcomer
Cassi Gibson, All-Newcomer

2009

Shyenne Hussey (IF), First Team
Diane Gallagher (OF), First Team
Kalyn Fox (UTL), Second Team
Diane Gallagher, All-Newcomer

Ohio Valley Conference

Academic Medal of Honor

1993-94	Christy Muncy
1996-97	Kim Sarrazin
1997-98	Michelle Williams
1998-99	Michelle Williams
1999-00	Michelle Williams
2000-01	Kristina Mahon, Michelle Williams
2001-02	Beth Conner
2002-03	Jacqueline Hucul
2003-04	Beth Conner
2004-05	Beth Conner, Jacqueline Hucul
2005-06	Kalyn Fox, Jacqueline Hucul
2006-07	Kalyn Fox, Michelle Lerner, Stephanie West
2007-08	Kalyn Fox, Michelle Lerner

ALL-TIME ROSTER



-- A --

Kelley Anderson 1994
Kelsey Anderson 2004-07



-- B --

Andrea Banks 1993
Diana Barreras 2001-04
Kristen Beckman 1993-96
Amber Berthoud 2002-05
Brandy Bevans 1995-98
Aly Blake 2008
Lindsey Blake 1997
Heather Blancke 1994-96
Jenn Bledsoe 2007-08
Kelli Bromley 2001-04
Elise Burch 2000-03
Tori Burris 1995
Chelsea Butler 2008-09



-- C --

Missy Carl 1993
Melanie Carmichael 1994
Jen Christiansen 2001-04
Brittani Collini 1997-99
Katie Collins 1993-94, 1996
Beth Conner 2002-05
Priscilla Corder 1993-94
Shelley Covington 1993
Jonelle Csora 2000-03



-- D --

Mary Dales 1999-00
Samm Daniels 2009-present
Christina Datko 2009-present

Kristie Davis 1993-94
Amy DeSmet 1996-99
Ashley Dollins 2008-present
Angie Dunagan 1995-98
Kerri Duncan 1998-99

-- E --

Tara Ealy 1995
Lisa Edwards 1999, 2001
Lauren Ellis 2007



-- F --

Heather Farmer 1997
Stephanie Folck 1993-94
Kalyn Fox 2006-09
Adriel Foxley 2004-08

-- G --

Nicky Gaideski 1996
Diane Gallagher 2009-present
Brittani Gibson 2009
Cassi Gibson 2008-present



-- H --

Jena Handley 2007-present
Erin Hartnett 2003-06
Amy Herrington 2000-03
Bethany Herrington 2000-03
Whitney Hines 1993-95
Lorie Horner 1995-96
DeAnn Horswill 2008-present
Jackie Hucul 2003-06
Shyenne Hussey 2007-present

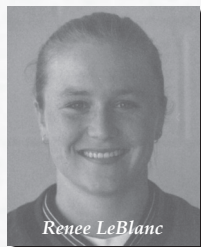
-- J --

Alysha Jones 2004-05
Amy Jones 1993-95



-- K --

Kim Kelly 2001-04
Kindal Kincaid 2004
Jeanie King 1994-97
Jaimey Kleinsmith 2006



-- L --

Nikki Laubecher 2009
Renee LeBlanc 1998-01
Amber Lenz 2008-09
Michelle Lerner 2007-08
Erin Luther 2008-09

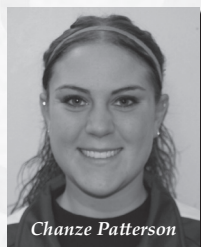


-- M --

Jill MacDonald 1997-99
Keri Macinsky 2006-07
Kristina Mahon 1998-01
Amy Mayrhofer 2004-07
Alex Merrell 2005-06
Heather Metzger 2007-09
Megan Mills 2001-02
Brittany Mockbee 2009-present
Christy Muncy 1994

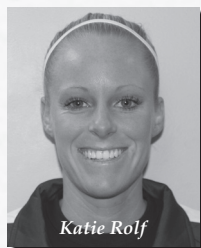
-- N --

Jennifer Norris 2002-05



-- P --

Jamie Parker 1994-96
Chanze Patterson 2005-08
Jodi Pence 2006-09
Missy Phillips 1997
Kelly Pikula 1999-00
Laura Pullin 1999-02



-- R --

Cassi Reams 2002
Sun Roesslein 2001
Katie Rolf 2005-08



-- S --

Kim Sarrazin 1997-00
Christy Schaber 1995-96
Brittney Schaeffer 2007
Suzie Schafer 2003-05
Ashley Schenck 2002-04
Karen Scott 1995-96, 1998-99
Jaclyn Snyder 2004
Jessica Soto 2000-03
Morgan Springs 2006-07
Kelly Swanson 1997-00

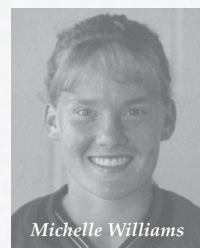


-- T --

Devon Thomas 1999
Shelby Thompson 2004-07
Vickie Thompson 1993
Ashley Totten 2001-04
Stacye Toups 2008-present

-- V --

Erin Vance 1997
Annette Vivier 1994-96



-- W --

Pam Webber 2006-09
Amy Wells 1999-02
Becky Werle 2006-2007
Stephanie West 2007
Michelle Williams 1998-01
Larkyn Wood 2009-present
Nicole Wood 1997-99



-- Y --

Angela Yott 1993-95



WHERE ARE THEY NOW



Beth Conner, a native of Cincinnati, pitched for the Colonels from 2002 to 2005.

She has been teaching fifth grade at Waco Elementary for four years and has served as an assistant softball coach at Madison Southern High School for five years. Conner is also coaching the academic team and future problem solving team at Waco Elementary.

In May, Conner will receive a master's degree in gifted education from Eastern Kentucky University.

Over four seasons, Conner compiled a 9-6 record with a 3.37 ERA and 61 career strikeouts. Her junior season, Conner posted a 4-0 record with a 2.80 ERA while helping ECU capture the Ohio Valley Conference regular season and tournament championships.

Conner resides in Richmond.



Amy Wells Anderson, a native of Louisville, played for the Colonels from 1999 to 2002.

Wells graduated from Eastern Kentucky in 2002 with a bachelor's in business administration-managerial communications. Following graduation, she worked as a graduate assistant for the Management, Marketing, and Administrative Communications Department at ECU while pursuing a graduate degree. In

2003 she received a master's in industrial education-occupational training and development.

Wells began working for Neace Lukens Insurance Agency in Louisville in February 2004 as a human resource administrative assistant and was promoted to human resource generalist in 2007. She achieved Professional In Human Resource designation in 2007. PHR is a professional designation that validates mastery in the field of human resource management.

Wells and Pete Anderson were married in 2009.

During her four-year career as a Colonel, Wells played in 95 games. She finished her career with 22 runs scored and four stolen bases. The outfielder was a member of the 2002 Ohio Valley Conference regular season and tournament championship ECU squad.





VERSUS ALL OPPONENTS

Opponent	Win	Loss	Last	Opponent	Win	Loss	Last	Opponent	Win	Loss	Last
Akron	3	1	2008	Iowa	1	2	2003	Sacred Heart	2	0	2009
Alabama	0	3	2006	Iowa State	0	1	2008	Saint Francis	1	0	2008
Alabama A&M	2	0	2002	Illinois	0	1	2002	Saint Joseph's	0	1	2005
Albany	2	0	2004	Illinois-Chicago	0	1	1996	Saint Louis	2	0	2004
Appalachian State	4	0	2008	Indiana State	1	2	1998	Samford	12	8	2008
Army	3	1	2001	Iowa State	0	2	1996	San Diego	1	2	2003
Auburn	5	1	2009	IPFW	1	1	2009	South Carolina	1	2	2006
Austin Peay	45	10	2009	IUPUI	3	1	2006	South Carolina-Aiken	1	0	1994
Ball State	2	0	2008	Jacksonville State	6	14	2009	South Carolina State	1	0	2006
Bellermine	1	1	1993	Kansas	0	2	2000	South Dakota	1	0	2009
Belmont	2	0	2005	Kennesaw State	1	2	2008	South Florida	1	2	1995
Bowling Green	1	0	2007	Kent State	3	4	2009	Southeast Louisiana	1	1	1994
Brescia	1	0	2004	Kentucky	7	15	2009	Southeast Missouri	23	30	2009
Bucknell	1	1	2007	La Salle	1	0	2009	Southern Illinois	1	0	2008
Butler	3	1	2009	Lehigh	3	0	2004	Southern Illinois Edwardsville	0	2	2009
Cal Poly San Luis Obispo	0	3	1996	Liberty	1	5	2000	Southern Mississippi	0	1	2008
California	0	1	2003	Lipscomb	2	3	2009	Southern Utah	2	0	2007
Campbell	0	1	2002	Long Beach State	0	3	2007	Southwestern Louisiana	0	2	1994
Canisius	0	1	2007	Long Island	0	2	2003	St. John's	2	0	2001
Centenary	1	1	1998	Louisville	3	6	2009	Stanford	0	1	2002
Central Florida	0	1	2005	Loyola Marymount	0	2	1996	Temple	1	0	2001
Central Michigan	1	0	2005	Maine	2	1	2007	Tennessee	0	6	2000
Charleston Southern	1	0	2002	Manhattan	1	0	1999	Tennessee-Martin	32	24	2009
Charlotte	6	2	2007	Marshall	7	18	2007	Tennessee State	47	7	2009
Chattanooga	2	2	1998	Massachusetts	0	1	2004	Tennessee Tech	27	46	2009
Cleveland State	2	1	2008	Mercer	1	2	2002	Texas Tech	0	1	1998
College of Charleston	1	0	2006	Miami (Ohio)	2	7	2009	Toledo	4	4	2004
Cornell	0	1	2000	Michigan	0	1	2004	Troy State	2	2	2000
Dana University	0	1	1993	Michigan State	0	1	2005	UCLA	1	1	2007
Dartmouth	2	0	2000	Middle Tennessee State	10	23	2003	UC Riverside	1	1	2007
Dayton	12	9	2008	Minnesota	0	3	1998	UC Santa Barbara	0	1	1996
Delaware	0	1	2000	Mississippi Valley	2	0	2006	UMBC	1	0	2002
Detroit	1	0	2001	Missouri-Kansas City	1	0	2009	UNC Greensboro	1	3	1998
Drexel	1	1	2000	Missouri Valley	1	0	1993	UNC Wilmington	1	0	1995
East Carolina	2	4	2002	Missouri Western	0	1	1993	UNLV	2	0	2003
East Tennessee State	6	0	2008	Mobile	0	1	1993	Utah	0	1	2002
Eastern Illinois	29	17	2009	Morehead State	40	19	2009	Utah State	0	1	2003
Eastern Michigan	1	2	1999	Mount Saint Mary's	1	0	2003	Valparaiso	2	0	1997
Elon	1	0	1999	Nicholls State	0	4	1995	Vermont	2	0	2007
Evansville	0	1	2005	North Carolina A&T	0	1	2007	Virginia	0	1	2000
Fairfield	1	0	2001	Northern Kentucky	0	2	1993	Wagner	0	1	2001
Florida State	0	1	2005	Northridge	0	1	2007	Washington	0	1	2008
Fordham	1	0	1999	Notre Dame	0	1	2007	West Florida	0	1	1993
Furman	0	4	2009	Ohio	3	7	2006	Western Carolina	1	0	2006
Georgia	0	1	2004	Oregon	0	1	2002	Western Kentucky	6	7	2009
George Mason	1	2	2004	Penn State	1	1	2005	Winthrop	3	0	1995
Georgetown University	2	0	2009	Pennsylvania	1	0	2009	Wisconsin	1	1	1998
Georgia State	0	9	2009	Providence	0	2	2006	Wisconsin-Green Bay	0	2	2002
Georgia Tech	1	4	2006	Purdue	0	2	1999	Wisconsin-Oshkosh	1	0	1994
Hawai'i	0	2	2008	Radford	2	1	2005	Wright State	12	9	2007
Holy Cross	2	0	2004	Rhode Island	2	1	2001	Yale	2	0	2009
Idaho State	1	0	2008	Rider	1	0	1999	Youngstown State	4	0	2005
Iona	1	0	2001	Robert Morris	0	1	2009	TOTALS	469	436	

|| EKU Versus The OVC



**AUSTIN
PEAY**
45-10



**JACKSONVILLE
STATE**
6-14

**MOREHEAD
STATE**
40-19



**SOUTHEAST
MISSOURI**
23-30

**TENNESSEE-
MARTIN**
32-24



**TENNESSEE
STATE**
47-7

**TENNESSEE
TECH**
27-46



**EASTERN
ILLINOIS**
29-17



OVC TOTAL
246-167 (.596)



ALL-TIME RESULTS

1993

11-26, 6-11 OVC

Head Coach: Jane Worthington

3/9	BELLERMINE	W	1-0
3/9	BELLERMINE	L	2-5
3/10	MIAMI (OH)	L	1-2
3/10	MIAMI (OH)	L	5-6
3/17	vs. IUPUI	L	4-7
3/18	vs. IUPUI	W	6-5
3/18	vs. Missouri Valley	W	27-1
3/19	vs. Missouri Western	L	1-5
3/19	vs. Dana University	L	1-7
3/19	at West Florida	L	0-6
3/19	vs. Mobile	L	0-8
3/31	at Toledo	L	1-5
3/31	at Toledo	L	2-10
4/3	at Austin Peay*	L	1-2
4/3	at Austin Peay*	L	1-4
4/4	at Southeast Missouri*	L	0-3
4/4	at Southeast Missouri*	L	1-9
4/6	at Wright State	W	7-4
4/6	at Wright State	L	1-4
4/7	MOREHEAD STATE*	L	0-1
4/7	MOREHEAD STATE*	L	3-4
4/10	TENNESSEE-MARTIN*	W	2-1
4/10	TENNESSEE-MARTIN*	L	2-6
4/10	TENNESSEE-MARTIN*	W	6-5
4/11	SOUTHEAST MISSOURI*	L	0-7
4/11	SOUTHEAST MISSOURI*	L	0-6
4/17	MIDDLE TENNESSEE*	W	2-0
4/17	MIDDLE TENNESSEE*	W	6-5
4/18	AUSTIN PEAY*	W	1-0
4/18	AUSTIN PEAY*	L	1-7
4/20	NORTHERN KENTUCKY	L	1-6
4/20	NORTHERN KENTUCKY	L	3-6
4/22	TENNESSEE TECH*	L	3-7
4/22	TENNESSEE TECH*	W	3-2
4/24	AUSTIN PEAY^	W	1-0
4/24	TENNESSEE TECH^	L	1-2
4/25	MIDDLE TENNESSEE^	L	2-6

* OVC Opponent

^ OVC Tournament

1994

26-28, 13-11 OVC

Head Coach: Jane Worthington

2/27	at UT Chattanooga	W	5-3
2/27	at UT Chattanooga	W	5-4
3/5	NICHOLLS STATE	L	0-6
3/5	OHIO UNIVERSITY	L	1-9
3/6	DAYTON	W	9-3
3/6	OHIO UNIVERSITY	L	5-7
3/12	vs. Mercer	W	9-3
3/12	vs. Wisconsin-Oshkosh	W	7-0
3/12	at Georgia State	L	0-4
3/13	at Georgia State	L	0-1
3/13	vs. Troy State	W	2-1
3/13	vs. South Carolina-Aiken	W	5-2
3/14	at Samford*	L	1-4
3/14	at Samford*	W	2-1
3/15	at Troy State	L	1-5
3/15	at Troy State	L	2-3
3/17	at Nicholls State	L	3-10
3/17	at Nicholls State	L	4-8
3/18	at Southwestern Louisiana	L	0-10
3/18	at Southwestern Louisiana	W	3-2
3/19	at Southeastern Louisiana	L	2-3
3/19	at Southeastern Louisiana	W	3-2
3/26	at Middle Tennessee*	W	6-1
3/26	at Middle Tennessee*	L	4-5
3/30	MOREHEAD STATE*	W	5-0
3/30	MOREHEAD STATE*	W	7-0
4/1	at Tennessee-Martin*	W	3-1
4/1	at Tennessee-Martin*	L	3-9
4/2	at Austin Peay*	W	3-2
4/2	at Austin Peay*	L	0-8
4/3	at Southeast Missouri*	L	1-2
4/3	at Southeast Missouri*	L	2-3



The 1993 Colonels were Eastern's first intercollegiate softball team.

4/8	TENNESSEE STATE*	W	8-0
4/8	TENNESSEE STATE*	W	14-0
4/8	TENNESSEE STATE*	W	12-0
4/9	TENNESSEE STATE*	W	9-0
4/9	TENNESSEE-MARTIN*	W	5-2
4/9	TENNESSEE-MARTIN*	L	0-1
4/13	at Marshall	W	5-0
4/13	at Marshall	L	3-5
4/14	at Morehead State*	L	3-4
4/14	at Morehead State*	W	5-0
4/16	MIDDLE TENNESSEE*	L	3-5
4/16	MIDDLE TENNESSEE*	L	8-10
4/17	AUSTIN PEAY*	W	6-0
4/17	AUSTIN PEAY*	W	6-1
4/18	TENNESSEE TECH*	L	4-5
4/18	TENNESSEE TECH*	L	2-4
4/19	WRIGHT STATE	L	1-5
4/19	WRIGHT STATE	W	3-2
4/22	vs. Tennessee-Martin^	W	4-0
4/23	vs. Tennessee Tech^	W	8-3
4/23	vs. Southeast Missouri^	L	2-9
4/23	vs. Middle Tennessee^	L	3-6
3/25	vs. Georgia Tech	W	1-0
3/26	at Winthrop	W	3-2
3/26	vs. Toledo	L	6-7
3/28	MOREHEAD STATE*	L	2-5
3/28	MOREHEAD STATE*	W	2-1
3/29	at Tennessee State*	W	9-1
3/29	at Tennessee State*	W	10-0
4/1	MIDDLE TENNESSEE*	W	2-1
4/1	MIDDLE TENNESSEE*	L	3-4
4/2	AUSTIN PEAY*	W	1-0
4/2	AUSTIN PEAY*	W	3-1
4/3	TENNESSEE TECH*	L	2-7
4/3	TENNESSEE TECH*	L	1-6
4/7	TENNESSEE STATE*	W	8-0
4/7	TENNESSEE STATE*	W	13-0
4/8	TENNESSEE-MARTIN*	W	5-2
4/8	TENNESSEE-MARTIN*	W	5-2
4/9	SOUTHEAST MISSOURI*	L	3-4
4/9	SOUTHEAST MISSOURI*	L	2-5
4/12	at Morehead State*	L	1-6
4/12	at Morehead State*	L	1-2
4/14	vs. South Carolina	W	4-3
4/14	vs. South Carolina	W	8-7
4/15	vs. Georgia State	L	4-6
4/15	vs. Marshall	L	2-3
4/15	vs. Nicholls State	L	0-4
4/22	at Tennessee-Martin*	W	5-2
4/22	at Tennessee-Martin*	W	5-3
4/25	at Marshall	L	0-4
4/25	at Marshall	L	4-5
4/28	MOREHEAD STATE^	W	10-0
4/28	SOUTHEAST MISSOURI^	L	2-3
4/29	MIDDLE TENNESSEE^	W	5-4
4/29	AUSTIN PEAY^	W	3-2
4/29	SOUTHEAST MISSOURI^	W	2-0
4/29	TENNESSEE TECH^	W	2-1
4/29	TENNESSEE TECH^	L	0-8

* OVC Opponent

^ OVC Tournament (Clarksville, Tenn.)

1995

31-29, 13-11 OVC

Head Coach: Jane Worthington

3/4	DAYTON	W	12-4
3/4	UT CHATTANOOGA	L	0-6
3/11	at Tennessee Tech*	L	3-5
3/11	at Tennessee Tech*	L	1-4
3/12	at Middle Tennessee*	W	5-4
3/12	at Middle Tennessee*	W	5-1
3/15	MARSHALL	L	1-2
3/15	MARSHALL	L	1-2
3/18	INDIANA STATE	L	1-2
3/18	WRIGHT STATE	W	5-3
3/18	MARSHALL	W	10-1
3/19	MARSHALL	W	5-4
3/19	INDIANA STATE	L	0-3
3/21	at Charlotte	L	5-7
3/21	at Charlotte	W	2-1
3/22	at Furman	L	4-5
3/22	at Furman	L	4-10
3/23	at Winthrop	W	1-0
3/23	at Winthrop	W	3-2
3/24	vs. East Carolina	W	3-0
3/24	vs. Kent State	L	0-6
3/25	vs. Furman	L	0-1
3/25	vs. UNC Wilmington	W	6-3

* OVC Opponent

^ OVC Tournament (Richmond, Ky.)

1996

18-36, 15-11 OVC

Head Coach: Jane Worthington

3/2	WRIGHT STATE	W	5-1
3/2	DAYTON	W	5-0
3/2	MIAMI (OH)	L	3-4
3/6	OHIO UNIVERSITY	L	1-2
3/6	OHIO UNIVERSITY	L	2-8
3/9	vs. Akron	L	5-6
3/9	vs. Purdue	L	0-8
3/10	vs. Wright State	L	3-4

3/10	at Tennessee	L	1-2
3/15	vs. Iowa State	L	2-3
3/15	at UC Santa Barbara	L	1-7
3/16	vs. Iowa State	L	1-5
3/17	vs. Long Beach State	L	3-11
3/17	vs. Long Beach State	L	1-3
3/19	at Cal Poly SLO	L	0-1
3/19	at Cal Poly SLO	L	3-5
3/20	vs. Loyola Marymount	L	0-2
3/20	vs. Loyola Marymount	L	3-6
3/24	at Tennessee State*	W	7-0
3/24	at Tennessee State*	W	4-0
3/27	TENNESSEE	L	3-4
3/27	TENNESSEE	L	0-9
3/30	AUSTIN PEAY*	L	1-4
3/30	AUSTIN PEAY*	W	6-4
3/31	MIDDLE TENNESSEE*	L	0-2
3/31	MIDDLE TENNESSEE*	L	3-5
4/3	at Morehead State*	W	11-3
4/3	at Morehead State*	W	5-3
4/6	at Tennessee Tech*	W	3-1
4/6	at Tennessee Tech*	W	5-2
4/7	at Middle Tennessee*	L	3-9
4/7	at Middle Tennessee*	L	3-8
4/12	at Southeast Missouri*	L	0-3
4/12	at Southeast Missouri*	L	1-3
4/14	at Tennessee-Martin*	L	0-1
4/14	at Tennessee-Martin*	W	11-4
4/16	TENNESSEE TECH*	L	3-4
4/16	TENNESSEE TECH*	W	10-5
4/19	vs. Illinois-Chicago	L	0-3
4/24	MOREHEAD STATE*	W	6-2
4/24	MOREHEAD STATE*	W	2-1
4/27	TENNESSEE-MARTIN*	W	1-0
4/27	TENNESSEE-MARTIN*	L	2-3
4/28	SOUTHEAST MISSOURI*	L	0-6
4/28	SOUTHEAST MISSOURI*	W	4-2
4/29	TENNESSEE STATE*	W	8-1
4/29	TENNESSEE STATE*	W	8-0
5/4	vs. Morehead State^	W	5-4
5/4	at Middle Tennessee^	L	4-7
5/5	vs. Tennessee Tech^	L	1-5

* OVC Opponent

^ OVC Tournament (Murfreesboro, Tenn.)

1997

23-29, 14-13 OVC

Head Coach: Jane Worthington

2/28	BUTLER	W	3-0
2/28	BUTLER	W	7-4
3/8	KENTUCKY	W	6-1



ALL-TIME RESULTS



The 2002 team won EKU's first Ohio Valley Conference regular season and tournament championships.

3/8	WRIGHT STATE	L	3-9
3/8	DAYTON	W	4-3
3/9	KENTUCKY	L	3-6
3/13	VALPARAISO	W	6-0
3/13	VALPARAISO	W	3-1
3/16	at Tennessee Tech*	L	1-9
3/16	at Tennessee Tech*	L	4-6
3/20	at UNC Greensboro	L	2-3
3/20	at UNC Greensboro	L	0-8
3/22	at Tennessee State*	W	10-2
3/22	at Tennessee State*	L	2-4
3/23	at Middle Tennessee*	L	3-4
3/23	at Middle Tennessee*	L	0-3
3/28	EASTERN ILLINOIS*	W	2-1
3/28	EASTERN ILLINOIS*	W	1-0
3/29	TENNESSEE-MARTIN*	W	3-2
3/29	TENNESSEE-MARTIN*	L	2-5
3/30	SOUTHEAST MISSOURI*	L	2-15
4/2	at Marshall	L	0-2
4/2	at Marshall	L	1-2
4/6	TENNESSEE TECH*	W	4-3
4/6	TENNESSEE TECH*	W	3-1
4/8	MOREHEAD STATE*	W	6-2
4/8	MOREHEAD STATE*	W	9-7
4/9	at Wright State	L	6-10
4/9	at Wright State	W	5-2
4/12	at Eastern Illinois	L	2-3
4/12	at Eastern Illinois	L	3-8
4/13	at Southeast Missouri*	L	1-9
4/13	at Southeast Missouri*	L	0-2
4/14	at Tennessee-Martin*	L	1-2
4/14	at Tennessee-Martin*	L	4-5
4/18	vs. UNC Greensboro	L	2-6
4/19	vs. Jacksonville State	L	3-11
4/19	at Tennessee	L	0-1
4/19	at Morehead State*	L	0-7
4/20	vs. Jacksonville State	W	9-5
4/20	vs. South Florida	L	1-4
4/22	at Morehead State*	W	3-0
4/22	at Morehead State*	W	3-1
4/24	at Dayton	L	0-5
4/26	AUSTIN PEAY*	W	3-2
4/26	AUSTIN PEAY*	W	8-7
4/29	TENNESSEE STATE*	W	7-4
4/29	TENNESSEE STATE*	W	9-1
5/3	vs. Eastern Illinois^	L	1-6
5/4	at Morehead State^	W	6-4
5/4	vs. Tennessee-Martin^	L	3-5

* OVC Opponent

^ OVC Tournament (Morehead, Ky.)

1998 38-19, 15-15 OVC Head Coach: Jane Worthington

2/20	vs. Charlotte	W	4-0
2/20	vs. Marshall	L	3-4
2/21	vs. Youngstown State	W	6-3
2/21	vs. East Carolina	L	0-2
2/21	vs. Miami (OH)	W	5-2
2/22	vs. Kentucky	W	1-0
2/22	vs. Minnesota	L	0-6
2/27	vs. Wisconsin	L	0-4
2/27	vs. UT Chattanooga	L	0-7
2/27	vs. Centenary	L	1-2
2/28	vs. Texas Tech	L	1-10
2/28	vs. Wisconsin	W	5-4
2/28	vs. Centenary	W	2-0
3/6	KENTUCKY	W	3-2
3/7	WRIGHT STATE	W	9-5
3/7	DAYTON	W	5-1
3/14	vs. Indiana State	W	4-1
3/14	vs. Ohio University	L	1-4
3/15	vs. Kent State	W	2-1
3/17	at Charlotte	W	4-1
3/17	at Charlotte	W	3-2
3/18	at UNC Greensboro	L	0-2
3/20	vs. Charlotte	W	6-5
3/21	vs. Maine	W	6-3
3/21	vs. Akron	W	2-0
3/21	vs. Radford	W	8-1
3/22	vs. Kent State	L	0-5
3/23	AUBURN	W	2-1
3/23	AUBURN	L	3-4
4/4	at Tennessee-Martin*	W	6-2
4/4	at Tennessee-Martin*	W	9-0
4/5	at Austin Peay*	W	1-0
4/5	at Austin Peay*	W	6-0
4/8	at Tennessee Tech*	L	1-3
4/8	at Tennessee Tech*	W	5-1
4/11	at Tennessee State*	W	11-3
4/11	at Tennessee State*	W	12-5
4/12	at Middle Tennessee*	L	0-8
4/12	at Middle Tennessee*	L	1-2
4/14	MOREHEAD STATE*	W	6-0
4/14	MOREHEAD STATE*	W	2-1
4/18	EASTERN ILLINOIS*	W	5-2
4/18	EASTERN ILLINOIS*	W	2-0
4/24	MIDDLE TENNESSEE*	L	1-3
4/24	MIDDLE TENNESSEE*	L	3-4
4/25	TENNESSEE TECH*	W	8-9
4/25	TENNESSEE TECH*	W	10-4
4/26	TENNESSEE STATE*	W	8-0

4/26	TENNESSEE STATE*	W	8-0
4/28	MARSHALL	L	2-3
4/28	MARSHALL	W	3-2
5/2	vs. Morehead State^	W	5-4
5/3	vs. Eastern Illinois^	L	1-2
5/3	vs. Austin Peay^	W	7-6
5/4	vs. Morehead State^	W	6-0
5/4	vs. Eastern Illinois^	L	1-4

* OVC Opponent

^ OVC Tournament (Cape Girardeau, Mo.)

1999 23-31, 12-12 OVC Head Coach: Jane Worthington

2/20	vs. Liberty	L	0-3
2/20	vs. Charlotte	W	3-0
2/20	vs. Purdue	L	1-7
3/6	KENT STATE	L	1-9
3/6	WRIGHT STATE	L	1-3
3/7	TENNESSEE	L	2-10
3/7	WRIGHT STATE	L	1-3
3/13	vs. Elon	W	5-4
3/16	vs. Rider	W	6-1
3/16	vs. East Carolina	L	0-3
3/17	vs. Vermont	W	6-4
3/17	vs. Fordham	W	5-0
3/18	vs. Manhattan	W	3-1
3/18	vs. Rhode Island	L	1-2
3/19	vs. George Mason	W	11-0
3/19	vs. Army	W	9-1
3/20	vs. Dartmouth	W	5-1
3/20	vs. Drexel	L	1-2
3/23	at Dayton	L	0-4
3/23	at Dayton	L	4-5
3/24	at Kentucky	L	0-7
3/24	at Kentucky	L	0-8
3/27	EASTERN MICHIGAN	L	0-4
3/28	EASTERN MICHIGAN	L	0-3
3/30	at Marshall	L	1-3
3/30	at Marshall	L	0-4
4/3	TENNESSEE STATE*	W	6-0
4/3	TENNESSEE STATE*	W	9-1
4/4	MIDDLE TENNESSEE*	L	1-2
4/4	MIDDLE TENNESSEE*	W	9-1
4/7	TENNESSEE TECH*	W	2-0
4/7	TENNESSEE TECH*	W	1-0
4/10	TENNESSEE-MARTIN*	W	8-0
4/10	TENNESSEE-MARTIN*	W	14-2
4/11	AUSTIN PEAY*	W	7-1
4/11	AUSTIN PEAY*	W	10-3
4/13	at Morehead State*	L	0-1

4/13	at Morehead State*	L	0-1
4/17	at Eastern Illinois*	L	0-6
4/17	at Eastern Illinois*	W	1-0
4/18	at Southeast Missouri*	L	3-4
4/18	at Southeast Missouri*	L	3-4
4/21	MOREHEAD STATE*	L	1-4
4/21	MOREHEAD STATE*	L	0-4
4/23	at Middle Tennessee*	L	2-3
4/23	at Middle Tennessee*	W	4-1
4/24	at Tennessee State*	W	8-3
4/24	at Tennessee State*	W	11-1
4/25	at Tennessee Tech*	L	1-2
4/25	at Tennessee Tech*	L	0-3
5/1	vs. Morehead State^	L	4-7
5/1	vs. Austin Peay^	W	5-3
5/2	vs. Tennessee Tech^	L	1-8

* OVC Opponent

^ OVC Tournament (Martin, Tenn.)

2000 26-34, 14-10 OVC

Head Coach: Jane Worthington

2/18	vs. Rhode Island	W	5-0
2/19	vs. East Carolina	L	0-2
2/19	vs. Alabama	L	1-14
2/19	vs. Georgia Tech	L	1-11
2/20	vs. Liberty	W	7-0
2/20	vs. Ball State	W	7-0
2/20	vs. Ohio	W	2-1
2/26	at Western Kentucky	L	2-4
2/26	at Western Kentucky	L	2-3
3/1	KENTUCKY	L	4-12
3/4	vs. Delaware	L	0-6
3/4	vs. Ohio	L	1-4
3/5	vs. Wright State	L	1-5
3/5	vs. Virginia	L	1-7
3/6	at Liberty	L	5-6
3/6	at Liberty	L	4-5
3/10	vs. East Carolina	L	0-3
3/10	vs. Kansas	L	1-4
3/12	vs. Tennessee	L	7-11
3/13	vs. Kansas	L	1-5
3/14	MARSHALL	W	4-0
3/14	MARSHALL	W	3-0
3/19	vs. Wisconsin-Green Bay	L	0-1
3/19	vs. Drexel	W	3-1
3/21	vs. Dartmouth	W	10-2
3/21	vs. Cornell	L	1-9
3/22	vs. Youngstown State	W	3-0
3/22	vs. Army	L	1-2
3/24	vs. Wright State	W	8-2
3/24	vs. Lehigh	W	13-10
3/25	vs. Troy State	W	3-2
3/25	vs. Army	W	6-1
3/30	DAYTON	L	1-2
3/30	DAYTON	L	7-12
4/1	AUSTIN PEAY*	W	7-6
4/1	AUSTIN PEAY*	W	3-1
4/2	AUSTIN PEAY*	W	9-0
4/6	TENNESSEE TECH*	L	1-4
4/6	TENNESSEE TECH*	L	1-5
4/8	at Southeast Missouri*	W	7-1
4/8	at Southeast Missouri*	W	2-0
4/9	at Southeast Missouri*	L	3-9
4/12	MOREHEAD STATE*	W	3-1
4/12	MOREHEAD STATE*	W	5-0
4/15	TENNESSEE-MARTIN*	L	1-2
4/15	TENNESSEE-MARTIN*	W	5-4
4/16	TENNESSEE-MARTIN*	W	5-1
4/19	at Tennessee Tech*	W	1-0
4/19	at Tennessee Tech*	L	0-3
4/22	at Middle Tennessee*	L	0-1
4/22	at Middle Tennessee*	L	3-4
4/23	at Middle Tennessee*	L	1-3
4/25	at Morehead State*	L	0-8
4/29	at Tennessee State*	L	2-3
4/29	at Tennessee State*	W	10-3
4/30	at Tennessee State*	W	5-2

ALL-TIME RESULTS



5/6	EASTERN ILLINOIS*	W	2-0
5/6	EASTERN ILLINOIS*	W	3-2
5/7	EASTERN ILLINOIS*	L	2-4
5/11	vs. Tennessee Tech [^]	L	1-2
5/11	vs. Eastern Illinois [^]	W	1-0
5/12	vs. Tennessee Tech [^]	L	3-7

* OVC Opponent

[^] OVC Tournament (Murfreesboro, Tenn.)

2001

41-17, 15-5 OVC

Head Coach: Jane Worthington

2/16	vs. St. John's	W	1-0
2/16	vs. George Mason	W	1-0
2/17	vs. East Carolina	L	1-4
2/17	vs. Temple	W	3-0
2/18	vs. St. John's	W	1-0
2/23	LONG ISLAND	L	1-4
2/24	EAST TENNESSEE STATE	W	8-0
2/24	YOUNGSTOWN STATE	W	4-0
2/25	OHIO UNIVERSITY	L	0-3
2/28	at Kentucky	L	3-4
2/28	at Kentucky	L	0-8
3/2	at Louisville	W	2-0
3/2	vs. Toledo	W	5-1
3/3	vs. Saint Louis	W	6-0
3/11	vs. Fairfield	W	2-1
3/11	vs. Rhode Island	W	1-0
3/13	vs. Dayton	L	0-2
3/13	vs. Wagner	L	2-4
3/14	vs. Maine	W	3-2
3/13	vs. Lehigh	W	5-0
3/14	vs. Iona	W	5-4
3/15	vs. Wisconsin-Green Bay	L	1-7
3/17	vs. Army	W	7-6
3/17	vs. Toledo	L	0-2
3/23	vs. Belmont	W	4-0
3/23	at Western Kentucky	L	0-4
3/24	vs. Detroit	W	3-0
3/24	at Western Kentucky	L	0-4
3/27	at Eastern Illinois*	W	4-0
3/28	at Eastern Illinois*	W	5-0
3/28	at Eastern Illinois*	W	9-1
3/31	at Austin Peay*	W	3-0
3/31	at Austin Peay*	W	7-0
4/1	at Austin Peay*	W	1-0
4/3	at Morehead State*	L	0-1
4/3	at Morehead State*	W	4-2
4/5	TENNESSEE TECH*	L	1-3
4/5	TENNESSEE TECH*	W	1-0
4/10	at East Tennessee State	W	5-0
4/10	at East Tennessee State	W	12-2
4/14	at Tennessee-Martin*	W	2-1
4/14	at Tennessee-Martin*	W	3-0
4/15	at Tennessee-Martin*	W	3-1
4/18	at Dayton	W	3-0
4/18	at Dayton	W	3-2
4/21	SOUTHEAST MISSOURI*	L	1-2
4/21	SOUTHEAST MISSOURI*	L	4-6
4/22	SOUTHEAST MISSOURI*	W	2-1
4/25	at Tennessee Tech*	L	0-8
4/28	TENNESSEE STATE*	W	5-1
4/28	TENNESSEE STATE*	W	5-0
4/29	TENNESSEE STATE*	W	6-5
5/4	vs. Austin Peay [^]	W	2-0
5/4	vs. Southeast Missouri [^]	W	2-0
5/5	at Tennessee Tech [^]	L	1-3
5/5	vs. Eastern Illinois [^]	W	1-0
5/5	at Tennessee Tech [^]	W	1-0
5/6	at Tennessee Tech [^]	L	0-3

* OVC Opponent

[^] OVC Tournament (Cookeville, Tenn.)

2002

37-14, 16-2 OVC

Head Coach: Jane Worthington

2/22	vs. Austin Peay	W	5-4
2/22	vs. Radford	W	8-1



The 2004 Colonels captured the program's second OVC regular season and tournament championships.

2/23	vs. Mercer	L	0-1
2/23	vs. Austin Peay	W	9-7
2/23	vs. Mercer	L	1-2
3/1	vs. Southern Utah	W	1-0
3/1	vs. Stanford	L	3-5
3/2	vs. Utah	L	0-10
3/2	vs. UNLV	W	6-1
3/3	vs. Oregon	L	2-7
3/6	at Western Kentucky	W	3-0
3/6	at Western Kentucky	W	2-0
3/9	vs. Ohio University	W	3-0
3/10	vs. Kent State	W	7-3
3/15	vs. Charleston Southern	W	9-1
3/15	vs. East Carolina	W	4-2
3/16	vs. Illinois	L	0-1
3/16	vs. Campbell	L	2-5
3/20	at Appalachian State	W	8-1
3/23	at Southeast Missouri*	W	3-2
3/23	at Southeast Missouri*	W	2-1
3/24	at Southeast Missouri*	W	7-1
3/27	DAYTON	W	2-0
3/27	DAYTON	W	3-0
3/30	TENNESSEE-MARTIN*	W	3-2
3/20	TENNESSEE-MARTIN*	W	7-0
4/4	MOREHEAD STATE*	W	5-1
4/4	MOREHEAD STATE*	W	13-5
4/6	at Tennessee Tech*	W	2-1
4/6	at Tennessee Tech*	W	2-0
4/7	at Tennessee Tech*	L	3-8
4/13	at Austin Peay*	L	2-5
4/13	at Austin Peay*	W	5-0
4/16	KENTUCKY	L	3-4
4/16	KENTUCKY	L	2-9
4/20	EASTERN ILLINOIS*	W	8-0
4/20	EASTERN ILLINOIS*	W	7-4
4/21	EASTERN ILLINOIS*	W	9-8
4/23	at Morehead State*	W	10-1
4/28	TENNESSEE STATE*	W	4-3
5/3	SOUTHEAST MISSOURI [^]	W	7-0
5/4	TENNESSEE TECH [^]	L	1-3
5/5	EASTERN ILLINOIS [^]	W	10-1
5/5	TENNESSEE TECH [^]	W	1-0
5/5	TENNESSEE TECH [^]	W	7-4
5/9	ALABAMA A&M%	W	8-0
5/9	ALABAMA A&M%	W	4-0
5/16	at South Carolina#	L	1-2
5/17	vs. UMBC#	W	6-1
5/17	vs. UCLA#	L	0-10

* OVC Opponent

[^] OVC Tournament (Richmond, Ky.)% NCAA Regional Play-In Series
NCAA Tournament (Columbia, S.C.)

2003

29-18, 13-7 OVC

Head Coach: Jane Worthington

3/2	at Middle Tennessee	W	4-3
3/2	at Middle Tennessee	W	7-3
3/4	WRIGHT STATE	W	1-0
3/4	WRIGHT STATE	W	4-0
3/7	vs. Toledo	W	9-2
3/8	vs. Jacksonville State	L	0-2
3/8	vs. Iowa	W	8-0
3/9	vs. Mount Saint Mary's	W	6-1
3/12	LOUISVILLE	W	6-1
3/12	LOUISVILLE	W	3-2
3/14	vs. San Diego	W	3-1
3/14	vs. San Diego	L	3-9
3/15	vs. San Diego	L	3-9
3/15	vs. Iowa	L	2-6
3/20	vs. UNLV	W	2-1
3/21	vs. California	L	0-9
3/21	vs. Iowa	L	0-5
3/22	vs. Long Island	L	1-2
3/22	vs. Utah State	L	2-6
3/29	at Tennessee-Martin*	L	1-2
3/29	at Tennessee-Martin*	L	2-4
3/29	at Tennessee-Martin*	W	4-2
4/2	at Kentucky	W	7-5
4/2	at Kentucky	W	5-3
4/5	TENNESSEE TECH*	L	7-10
4/5	TENNESSEE TECH*	L	2-4
4/6	TENNESSEE TECH*	L	2-3
4/12	AUSTIN PEAY*	W	3-2
4/12	AUSTIN PEAY*	W	3-2
4/13	AUSTIN PEAY*	W	6-1
4/15	WESTERN KENTUCKY	W	4-0
4/15	WESTERN KENTUCKY	L	2-7
4/19	at Eastern Illinois*	W	2-0
4/19	at Eastern Illinois*	L	0-1
4/20	at Eastern Illinois*	W	1-0
4/22	MOREHEAD STATE*	W	1-0
4/22	MOREHEAD STATE*	W	10-4
4/26	at Tennessee State*	W	3-0
4/26	at Tennessee State*	W	4-3
4/27	at Tennessee State*	W	6-1
5/3	SOUTHEAST MISSOURI*	L	0-4
5/3	SOUTHEAST MISSOURI*	W	4-1
5/4	SOUTHEAST MISSOURI*	W	3-0
5/8	vs. Eastern Illinois [^]	W	8-0
5/9	at Tennessee Tech [^]	L	0-9

5/9	vs. Southeast Missouri [^]	W	7-2
5/10	at Tennessee Tech [^]	L	1-7

* OVC Opponent

[^] OVC Tournament (Cookeville, Tenn.)

2004

42-17, 22-4 OVC

Head Coach: Jane Worthington

2/13	vs. Albany	W	3-2
2/13	at Alabama	L	1-2
2/14	vs. Lipscomb	W	1-0
2/14	vs. Lipscomb	L	2-3
2/15	vs. Albany	W	2-0
2/21	vs. Georgia Tech	L	0-2
2/21	vs. Tennessee State	W	5-2
2/22	vs. Georgia State	L	1-5
2/22	vs. Tennessee State	W	6-2
3/5	BRESCIA	W	1-0
3/7	vs. George Mason	L	4-9
3/7	vs. Providence	L	1-2
3/8	vs. Holy Cross	W	3-1
3/8	vs. Toledo	W	4-1
3/9	vs. Lehigh	W	4-3
3/9	vs. IPFW	W	5-4
3/11	vs. Butler	W	1-0
3/11	vs. Yale	W	1-0
3/13	vs. Holy Cross	W	18-2
3/12	vs. Sacred Heart	W	8-0
3/20	vs. Toledo	W	8-0
3/20	vs. Michigan	L	2-3
3/21	vs. Saint Louis	W	4-3
3/23	DAYTON	L	0-1
3/23	DAYTON	W	3-2
3/27	EASTERN ILLINOIS*	W	6-0
3/27	EASTERN ILLINOIS*	W	4-3
3/28	EASTERN ILLINOIS*	W	8-1
3/31	KENTUCKY	L	0-9
3/31	KENTUCKY	L	2-9
4/3	at Jacksonville State*	W	12-3
4/3	at Jacksonville State*	W	10-6
4/4	at Jacksonville State*	L	2-10
4/6	at Tennessee Tech*	W	5-0
4/6	at Tennessee Tech*	W	4-2
4/9	SAMFORD*	W	6-0
4/9	SAMFORD*	W	7-6
4/10	SAMFORD*	W	8-1
4/14	MOREHEAD STATE*	W	10-2
4/14	MOREHEAD STATE*	W	3-0
4/17	TENNESSEE-MARTIN*	L	0-2
4/17	TENNESSEE-MARTIN*	W	4-3
4/18	TENNESSEE-MARTIN*	W	6-2



ALL-TIME RESULTS

4/24	at Austin Peay*	L	1-3
4/24	at Austin Peay*	W	11-5
4/25	at Austin Peay*	W	7-2
4/27	TENNESSEE TECH*	L	1-2
4/29	at Morehead State*	W	6-1
5/2	at Southeast Missouri*	W	3-0
5/2	at Southeast Missouri*	W	3-1
5/8	TENNESSEE STATE*	W	1-0
5/8	TENNESSEE STATE*	W	3-1
5/9	TENNESSEE STATE*	W	3-2
5/13	SAMFORD [^]	W	4-0
5/14	TENNESSEE-MARTIN [^]	W	8-0
5/15	TENNESSEE-MARTIN [^]	L	1-2
5/15	TENNESSEE-MARTIN [^]	W	4-3
5/20	at Georgia [#]	L	0-10
5/20	vs. Massachusetts [#]	L	1-4

* OVC Opponent

[^] OVC Tournament (Richmond, Ky.)

[#] NCAA Tournament (Athens, Ga.)

2005

22-30, 12-14 OVC

Head Coach: Jane Worthington

2/19	vs. Georgia Tech	L	0-7
2/19	vs. Georgia State	L	1-3
2/20	vs. Evansville	L	5-13
2/20	vs. Georgia State	W	7-0
2/26	IUPUI	W	4-1
2/26	DAYTON	W	5-1
2/27	YOUNGSTOWN STATE	W	8-0
2/27	DAYTON	W	8-0
3/4	vs. Penn State	L	0-8
3/4	vs. Central Florida	L	1-9
3/5	vs. Central Michigan	W	5-1
3/6	vs. Michigan State	L	1-5
3/6	vs. Penn State	W	6-2
3/11	vs. Saint Joseph's	L	0-8
3/11	vs. Radford	L	5-10
3/12	vs. Florida State	L	5-13
3/12	vs. Iowa State	L	5-6
3/13	vs. Georgia State	W	2-1
3/16	BELMONT	W	6-0
3/19	TENNESSEE TECH*	L	0-4
3/19	TENNESSEE TECH*	W	9-1
3/20	TENNESSEE TECH*	L	2-3
3/22	MOREHEAD STATE*	W	4-3
3/25	at Austin Peay*	W	8-0
3/25	at Austin Peay*	W	11-0
3/26	at Austin Peay*	L	1-3
3/30	at Marshall	L	0-2
4/3	JACKSONVILLE STATE*	L	1-5
4/3	JACKSONVILLE STATE*	L	7-11
4/6	at Kentucky	L	0-2
4/9	at Southeast Missouri*	L	1-3
4/9	at Southeast Missouri*	L	0-8
4/10	at Southeast Missouri*	L	2-3
4/16	TENNESSEE-MARTIN*	W	3-0
4/16	TENNESSEE-MARTIN*	W	7-4
4/17	TENNESSEE-MARTIN*	L	2-7
4/19	WESTERN KENTUCKY	L	0-4
4/19	WESTERN KENTUCKY	W	2-0
4/21	LOUISVILLE	L	6-10
4/23	at Tennessee State*	W	7-0
4/24	at Tennessee State*	W	9-0
4/24	at Tennessee State*	W	8-1
4/28	at Morehead State*	L	2-4
4/28	at Morehead State*	L	5-6
4/30	EASTERN ILLINOIS*	L	6-8
5/1	EASTERN ILLINOIS*	L	1-10
5/1	EASTERN ILLINOIS*	W	9-2
5/7	at Samford*	L	0-2
5/7	at Samford*	W	7-5
5/8	at Samford*	L	2-4
5/12	vs. Samford [^]	L	2-4
5/13	vs. Tennessee-Martin [^]	L	0-8

* OVC Opponent

[^] OVC Tournament (Jacksonville, Ala.)

2006

33-29, 13-13 OVC

Head Coach: Jane Worthington

2/10	vs. Mississippi Valley State	W	9-1
2/10	vs. Alabama	L	0-9
2/11	vs. Marshall	L	1-6
2/11	vs. Marshall	L	8-9
2/12	vs. Mississippi Valley State	W	1-0
2/18	vs. Georgia State	L	4-8
2/18	vs. Kennesaw State	L	4-5
2/19	vs. Georgia Tech	L	0-8
2/19	vs. Kennesaw State	W	7-4
3/4	DAYTON	W	10-4
3/4	vs. IUPUI	W	5-1
3/5	CLEVELAND STATE	W	3-1
3/5	CLEVELAND STATE	L	0-3
3/8	KENTUCKY	L	2-8
3/10	vs. College of Charleston	W	8-7
3/10	vs. South Carolina State	W	11-0
3/11	vs. Providence	L	1-2
3/11	vs. Ohio University	W	4-0
3/12	vs. Western Carolina	W	4-3
3/15	at South Carolina	L	1-6
3/16	at East Tennessee State	W	6-0
3/16	at East Tennessee State	W	9-3
3/19	SAMFORD*	W	3-0
3/19	SAMFORD*	W	8-0
3/22	at Morehead State*	W	7-0
3/22	at Morehead State*	W	4-1
3/25	at Tennessee Tech*	W	1-0
3/26	at Tennessee Tech*	L	2-3
3/26	at Tennessee Tech*	L	3-8
3/29	LOUISVILLE	L	0-6
4/1	AUSTIN PEAY*	W	4-0
4/1	AUSTIN PEAY*	W	5-0
4/2	AUSTIN PEAY*	W	2-1
4/4	WRIGHT STATE	W	4-1
4/4	WRIGHT STATE	W	13-5
4/5	at Louisville	L	0-8
4/8	at Jacksonville State*	L	1-6
4/8	at Jacksonville State*	L	3-7
4/9	at Jacksonville State*	L	3-5
4/12	MARSHALL	W	7-4
4/12	MARSHALL	L	4-7
4/14	SOUTHEAST MISSOURI*	L	1-3
4/14	SOUTHEAST MISSOURI*	W	15-1
4/15	SOUTHEAST MISSOURI*	W	4-1
4/19	at Western Kentucky	L	1-2
4/19	at Western Kentucky	W	5-2
4/22	at Tennessee-Martin*	L	0-1
4/23	at Tennessee-Martin*	L	0-1
4/26	at Tennessee-Martin*	L	1-7
4/27	MOREHEAD STATE*	W	3-2
4/29	TENNESSEE STATE*	W	8-0
4/29	TENNESSEE STATE*	W	3-2
4/30	TENNESSEE STATE*	L	2-3
5/6	at Eastern Illinois*	L	1-2
5/6	at Eastern Illinois*	L	1-2
5/7	at Eastern Illinois*	L	1-4
5/11	vs. Eastern Illinois [^]	L	5-6
5/12	vs. Southeast Missouri [^]	W	3-0
5/12	vs. Jacksonville State [^]	W	1-0
5/13	vs. Eastern Illinois [^]	W	4-1
5/13	at Tennessee Tech [^]	L	0-3

* OVC Opponent

[^] OVC Tournament (Cookeville, Tenn.)

2007

24-31, 14-12 OVC

Head Coach: Jane Worthington

2/17	vs. North Carolina A&T	L	7-10
2/17	at Charlotte	L	13-17
2/18	vs. Bucknell	L	5-8
2/18	vs. Bucknell	W	9-4
2/23	vs. Bowling Green	W	3-2
2/23	vs. Miami (Ohio)	L	0-9
2/24	vs. Maine	L	3-5
2/24	vs. Akron	W	3-0

2/25	vs. Vermont	W	2-0
2/28	at Lipscomb	W	5-0
2/28	at Lipscomb	L	0-8
3/6	at Marshall	L	1-10
3/9	vs. Northridge	L	1-2
3/9	vs. UCLA	L	0-8
3/10	vs. Canisius College	L	5-8
3/10	vs. Southern Utah	W	2-1
3/11	at Long Beach State	L	0-5
3/11	vs. Notre Dame	L	2-10
3/13	at UC Riverside	W	4-3
3/13	at UC Riverside	L	0-5
3/17	TENNESSEE-MARTIN*	W	4-3
3/17	TENNESSEE-MARTIN*	W	5-3
3/18	TENNESSEE-MARTIN*	L	0-4
3/21	MOREHEAD STATE*	W	3-0
3/21	MOREHEAD STATE*	W	8-0
3/24	JACKSONVILLE STATE*	L	9-12
3/24	JACKSONVILLE STATE*	W	4-3
3/25	JACKSONVILLE STATE*	W	4-3
3/27	at Miami (Ohio)	L	1-2
3/31	at Southeast Missouri*	W	10-9
4/1	at Southeast Missouri*	W	12-3
4/1	at Southeast Missouri*	L	2-3
4/4	at Wright State	L	5-7
4/4	at Wright State	W	11-5
4/6	EASTERN ILLINOIS*	W	7-2
4/6	EASTERN ILLINOIS*	W	5-1
4/10	at Kentucky	L	7-8
4/12	at Morehead State*	W	9-6
4/14	at Samford*	L	1-2
4/14	at Samford*	L	7-8
4/15	at Samford*	L	0-2
4/17	at Louisville	L	1-7
4/21	TENNESSEE TECH*	L	0-6
4/21	TENNESSEE TECH*	L	3-7
4/22	TENNESSEE TECH*	W	5-4
4/28	at Tennessee State*	L	0-1
4/28	at Tennessee State*	L	1-2
4/29	at Tennessee State*	L	2-3
5/5	at Austin Peay*	W	2-1
5/5	at Austin Peay*	L	1-2
5/6	at Austin Peay*	W	6-2
5/10	vs. Tennessee-Martin [^]	L	0-4
5/11	vs. Austin Peay [^]	W	1-0
5/11	vs. Samford [^]	W	3-2
5/12	at Tennessee Tech [^]	L	1-2

* OVC Opponent

[^] OVC Tournament (Cookeville, Tenn.)

2008

28-22, 17-10 OVC

Head Coach: Jane Worthington

2/15	vs. Southern Mississippi	L	2-7
2/15	at Kennesaw State	L	5-13
2/16	vs. Appalachian State	W	17-9
2/16	vs. Appalachian State	W	11-10
2/22	vs. Iowa State	L	1-3
2/22	vs. Akron	W	11-1
2/23	vs. Ball State	W	3-0
2/23	vs. Saint Francis	W	3-0
2/24	vs. East Tennessee State	W	4-1
3/1	DAYTON	L	4-7
3/2	CLEVELAND STATE	W	6-4
3/2	APPALACHIAN STATE	W	6-1
3/6	vs. Southern Illinois	W	8-6
3/6	at #15 Hawai'i	L	0-5
3/7	vs. #22 Washington	L	0-4
3/8	vs. Idaho State	W	8-0
3/9	at #15 Hawai'i	L	0-1
3/15	SOUTHEAST MISSOURI*	W	6-2
3/16	SOUTHEAST MISSOURI*	W	10-2
3/16	SOUTHEAST MISSOURI*	W	10-2
3/21	TENNESSEE STATE*	W	2-1
3/21	TENNESSEE STATE*	W	9-3
3/22	TENNESSEE STATE*	L	3-4
3/25	at Morehead State*	W	2-1
3/25	at Morehead State*	L	4-5

3/29	SAMFORD*	L	5-11
3/29	SAMFORD*	W	7-4
3/30	SAMFORD*	W	2-1
4/1	MIAMI (OHIO)	W	8-0
4/1	MIAMI (OHIO)	L	8-10
4/5	at Jacksonville State*	L	7-11
4/5	at Jacksonville State*	L	5-6
4/6	at Jacksonville State*	L	7-8
4/9	MOREHEAD STATE*	L	1-4
4/12	at Tennessee-Martin*	W	7-2
4/12	at Tennessee-Martin*	W	16-5
4/13	at Tennessee-Martin*	W	1-0
4/19	AUSTIN PEAY*	W	11-1
4/19	AUSTIN PEAY*	W	5-2
4/20	AUSTIN PEAY*	W	13-0
4/23	at Kentucky	L	2-4
4/26	at Tennessee Tech*	W	2-1
4/26	at Tennessee Tech*	L	4-5
4/27	at Tennessee Tech*	L	4-12
4/30	LOUISVILLE	L	2-4
5/3	at Eastern Illinois*	W	4-0
5/3	at Eastern Illinois*	L	5-9
5/4	at Eastern Illinois*	W	4-3
5/8	vs. Samford [^]	L	6-8
5/9	vs. Tennessee Tech [^]	L	4-8

* OVC Opponent

[^] OVC Tournament (Jacksonville, Ala.)

2009

17-27, 8-13 OVC

Head Coach: Jane Worthington

2/13	vs. Furman	L	2-9
2/13	at Auburn	L	1-7
2/14	vs. Missouri-Kansas City	W	4-1
2/15	vs. Western Kentucky	L	0-13
2/21	vs. Lipscomb	L	2-6
2/21	at Georgia State	L	3-4
2/22	vs. Georgetown University	W	4-2
2/22	vs. Georgetown University	W	3-2
3/7	vs. IPFW	L	0-2
3/7	vs. South Dakota	W	7-1
3/8	vs. Sacred Heart	W	13-1
3/8	vs. Pennsylvania	W	10-2
3/10	vs. Butler	L	7-8
3/10	vs. Robert Morris	L	0-1
3/11	vs. Yale	W	6-5
3/11	vs. La Salle	W	8-3
3/15	TENNESSEE TECH*	L	1-13
3/15	TENNESSEE TECH*	L	3-4
3/17	MOREHEAD STATE*	W	2-1
3/17	MOREHEAD STATE*	L	7-12
3/21	SIU EDWARDSVILLE	L	0-6
3/21	SIU EDWARDSVILLE	L	1-4
3/25	KENT STATE	L	2-4
3/25	KENT STATE	W	14-6
3/28	EASTERN ILLINOIS*	L	0-5
3/28	EASTERN ILLINOIS*	L	7-13
3/29	EASTERN ILLINOIS*	W	4-1
4/1	at Morehead State*	W	6-4
4/4	at Austin Peay*	W	8-0
4/4	at Austin Peay*	W	1-0
4/5	at Austin Peay*	L	3-4
4/11	JACKSONVILLE STATE*	L	0-17
4/11	JACKSONVILLE STATE*	L	1-9
4/18	at Tennessee State*	W	7-2
4/18	at Tennessee State*	W	4-3
4/22	at Kentucky	L	0-7
4/25	at Southeast Missouri*	L	3-4
4/25	at Southeast Missouri*	L	5-8
4/26	at Southeast Missouri*	L	3-4
4/28	at Miami (Ohio)	L	2-7
4/29	at #18 Louisville	L	0-7
5/2	TENNESSEE-MARTIN	L	2-7
5/2	TENNESSEE-MARTIN	L	0-5
5/3	TENNESSEE-MARTIN	W	4-2

* OVC Opponent

UNIVERSITY PRESIDENT



Dr. Doug Whitlock

Title: University President

Year at ECU: Third year

Alma Mater: Eastern Kentucky, 1965, '66

Dr. Doug Whitlock's love affair with Eastern began when he arrived on his hometown campus as a first-generation undergraduate student in 1961.

It continued unabated throughout a 38-year career in various administrative and teaching roles at ECU, including a five-year stint as Vice President for Administrative Affairs, from 1998-2003. His last three years of service were as a half-time faculty member in the Department of Computer Science.

As he addressed faculty and staff at a campus-wide convocation on Aug. 15, 2007, just two days after being named President for the interim, Dr. Whitlock recalled the tremendous difference the institution he cherishes has made in his own life.

(The Eastern faculty) "largely made me what I was then and am now," he said.

"I will admit to you that I love Eastern, and when my service in the presidency is finished, if I have helped more of you love her too, then I will have done my job."

– President Whitlock –

On Oct. 22, 2007, the interim label was removed and now, as ECU's 11th President, Dr. Whitlock is devoted to upholding the rich tradition of his alma mater while guiding her to even greater heights of excellence.

After earning two degrees from Eastern – a bachelor's degree in history and social science in 1965 and a master's degree in history a year later – Dr. Whitlock earned his doctoral degree in higher education from the University of Kentucky in 1981.



In February 2009, Dr. Whitlock was on hand at the State Capitol to announce the partnership between Eastern Kentucky University and General Atomics to examine the potential for a cellulose-derived biodiesel fuel industry in Kentucky.

After two years of active duty with the U.S. Army, Dr. Whitlock returned to Eastern in 1968 to serve as Director of Publications. Three years later, he was named Director of Public Information.

In 1976, he was tapped by President J.C. Powell to serve as Executive Assistant to the President, continuing in that role through the administration of President Hanly Funderburk.

As Vice President for Administrative Affairs, Dr. Whitlock was responsible for Facilities Services, Public Safety, Information Technology and Delivery Systems, Media Resources, and University Farms. For a portion of his tenure, he also served as the institution's chief financial officer.

Dr. Whitlock has long been an active participant in community life, serving since 1999 on the Madison County School Board, including two terms as chair. He also has served as a consultant with the Kentucky School Boards Association. He is an Elder and past board chair in the First Christian Church (Disciples of Christ).

He and his wife, Joanne, have been married 39 years and have two grown children, Robert and Janet.

At his first convocation as President, Dr. Whitlock offered faculty and staff one gauge by which his stint as President may be judged:

"I will admit to you that I love Eastern, and when my service in the presidency is finished, if I have helped more of you love her too, then I will have done my job."

Did You Know . . .

... Dr. Whitlock holds two degrees from Eastern Kentucky University – a bachelor's degree in history and social science as well as a master's degree in history.



ECU President Dr. Doug Whitlock and his wife, Joanne.



DIRECTOR OF ATHLETICS



Mark Sandy

Title: Director of Athletics
Year at ECU: Fifth year
Alma Mater: Concord College, 1974

In four years under Mark Sandy's guidance as Director of Athletics at Eastern Kentucky University, the Colonels have enjoyed success at both the national and conference levels while also achieving in the classroom.

During the 2008-09 school year, the Colonels captured their first OVC Institutional Sportsmanship Award, while four sports won their respective league championships – men's cross country, women's cross country, football, and women's tennis. In addition, the football and women's tennis teams earned a spot in their respective sport's NCAA championships. Individually, two student-athletes qualified for national postseason tournaments and several Colonels received OVC Player of the Year honors.

"Success can be defined in many terms throughout the vast enterprise known as collegiate athletics," Sandy said. "Team accomplishments and individual honors just begin to tell the story of what I am most proud of after my fourth year as ECU's Director of Athletics. Success is our student-athletes developing into contributing members of society. Success is our coaching staff and their dedication to our student-athletes."

In the most recent NCAA Academic Progress Report (APR) released in the spring of 2009, Eastern Kentucky boasted several quality rankings. Four ECU programs – football, men's golf, women's golf, and men's tennis – either met or exceeded the national average in the multi-year APR, a measure of eligibility and retention of scholarship student-athletes. Meanwhile, football's multi-year APR score of 968 was the highest among all Division I institutions in the Commonwealth of Kentucky and the Ohio Valley Conference. Men's cross country, men's tennis, and women's golf received perfect scores of 1,000 on the APR for the 2007-08 academic year.

"Our department's goal is to create a student-athlete experience worthy of the proud ECU tradition. We intend to win with class, achieve success in the classroom, and strive for NCAA postseason competition in every sport."

– Mark Sandy –



The women's tennis team earned its first-ever trip to the NCAA championships after going undefeated against OVC opponents in the spring of 2009.

2008-09 ECU Athletics Highlights

- **40 student-athletes** earn their collegiate diploma
- **Women's soccer** captures its fourth-straight OVC sportsmanship award
- **Women's tennis** qualifies for the NCAA tournament for the very first time
- **Men's and women's cross country** each capture the OVC title for the third straight year
- **Football** reaches the NCAA FCS playoffs for a record 19th time
- **Softball** player Shyenne Hussey earns All-OVC accolades for the third consecutive season
- **Men's basketball** player Mike Rose leads the nation in three-point shooting at 48.1 percent
- **Trey Bowling (men's golf)** and **Joseph Maina (men's track & field)** each qualify for the NCAA championships

Under Sandy's guidance, Eastern Kentucky completed three facility upgrades within the last year. Synthetic turf replaced the natural grass football field at Roy Kidd Stadium. Gertrude Hood Field, the home for ECU softball, underwent a series of improvements which included a new scoreboard and a new backstop. Finally, the Colonel Golf and Learning Center opened for business next to Arlington Golf Course in the middle of June.

Alumni Coliseum received a facility enhancement in the summer of 2006 with a newly branded court and scoreboards, while a new series of athletics marks were created and unveiled in April 2006. In December 2005, the University and department of athletics announced the creation of an

Athletics Hall of Fame to commemorate distinguished individuals and teams on their accomplishments and contributions to the tradition of Colonel athletics.

On May 31, 2005, ECU announced the hiring of Mark Sandy as Director of Athletics. Prior to Eastern Kentucky, Sandy served as senior associate athletics director for external operations at the University of Richmond for five years.

While at Richmond, Sandy secured commitments of more than nine million dollars toward a \$20 million Spider athletics campaign, and increased giving by 94 percent, while serving as an administrator for the men's and women's basketball programs.

From 1997 to 2000, Sandy served as associate athletics director at Miami (Ohio) University, where he was responsible for marketing and major gifts. He began his career as a high school mathematics and history teacher, in addition to coaching basketball and baseball, and went on to serve as an assistant basketball coach at the University of Evansville, Wake Forest University and Virginia Military Institute.

Upon being hired, Sandy vowed that his priority would always be to enhance the student-athlete experience, adding that increasing financial resources through fund-raising, ticket sales and corporate partnerships would also be a focal point of the effort.

Sandy was an all-conference baseball player and captain of the basketball team at Concord College in West Virginia, where he earned a bachelor's degree in 1974. He went on to earn a master's of education degree from Lynchburg College.

He and his wife, Kitty, have two children, Kraig and Madison.

STAFF DIRECTORY



Simon Gray
Associate AD -
Advancement



Corey Bray
Assistant AD -
Administration



Dan McBride
Assistant AD -
Operations



Treka Adams
Colonel Club



David Brajuha
Assistant Athletic
Trainer



Dr. Larry Collins
Faculty Athletic
Representative



Hugh Davis
Official Statistician



Jon-Michael Davis
Head Strength
Coach



David T. Green
Head Athletic
Trainer



Dianna Hammond
Office Associate -
Bratzke Center



Dr. Randy Kennedy
Director of
Bratzke Center



Kara Kovert
Director of
Athletic Marketing



Tiffany Napier
Assistant Athletic
Trainer



Karl Park
Director of Athlet-
ics Hall of Fame



Mike Park
Ticket Manager



David Parke
Athletics Business
Manager



Jennifer Parsons
Athletic Academic
Advisor



Tim Pike
Assistant Athletic
Trainer



Denise Puckett
Office Associate -
Football



Chris Radcliffe
University
Photographer



Jenna Sample
Athletic Academic
Advisor



Chad Scott
Assistant Strength
Coach



Lynn Tyler
Athletic Director
Admin. Assistant

EKU Head Coaches



Lindsay Basalyga
Women's Soccer



Lori Duncan
Volleyball



Rick Erdmann
Track/Cross
Country



Dean Hood
Football



Jeff Neubauer
Men's Basketball



Rob Oertel
Tennis (M&W)



Chrissy Roberts
Women's
Basketball



Jason Stein
Baseball



Joni Stephens
Women's Golf



Pat Stephens
Men's Golf



Jane Worthington
Softball

Phone Directory

Note: Area code and prefix
for all numbers below is 859-
622-xxxx.

Athletics Administration:

Mark Sandy2120
Simon Gray1496
Corey Bray2125
Dan McBride2358
Lindsey McKaskle.....8541
David Parke2121
Mike Park2122

Academic Advising:

Randy Kennedy.....6648

Athletic Marketing:

Kara Kovert2039

Athletic Public Relations:

Michael Clark.....6170
Kevin Britton2006
Steve Fohl.....1253

Athletic Training:

David T. Green2140
David Brajuha8174
Tiffany Napier2609
Tim Pike2147

Baseball:

Jason Stein2128

Basketball (Men's):

Jeff Neubauer.....6501

Basketball (Women's):

Chrissy Roberts2895

Football:

Dean Hood2146

Golf (Men's):

Pat Stephens.....8039

Golf (Women's):

Joni Stephens8039

Soccer (Women's):

Lindsay Basalyga1245

Softball:

Jane Worthington1246

Tennis (Men's/Women's):

Rob Oertel2133

Track & Cross Country:

Rick Erdmann2126

Volleyball (Women's):

Lori Duncan2141



DUGOUT CLUB AND CAMPS

The Eastern Kentucky softball program would like to thank the following booster club members for their contributions. The donated funds help the Colonels continue running a successful program and Dugout Club members receive fun and exciting items for their enjoyment. For more information, please contact the Eastern Kentucky softball office at (859) 622-1246.

Adam and Brandon Anderson	Dan McBride
Laura Anderson	Bob and Stacey McCoy
Herman and Doris Bowman	Laura Mullen
John and Rhonda Bruce	Carlos Ortega
Jimbo Busse	Don Perry
Martin Clermont, CPF	Paula and Tom Sheil
Terry and Charlene Costa	Adonis and Laura Spathias
Clay and Doris Dollins	Hector and Ruth Spathias
Tony, Rosanna, and	Jay and Dee Riggs
Seleena Flores	Ashley Totten
Dan and Jill Fulks	Mike and Preica Wood
Mike and Chris Gallagher	Gordon and
JJ Gibson	Evelyn Worthington
Johnny & Cindy Gibson	Willitts Equip Co INC
Kelley Gray	The Harley Family
Granddad and Grandma	JL Perry LLC
Howes	Helen and Manuel Calderon
Shadrach Hussey	and Tony Jr Flores
Sunday Ann Hussey	Gibson & Sons Enterprises
Leon and Marcia Lesicka	The Handley Family
Paul T. Marshall	

Membership	Price	Benefits
Base Hit	\$50	Newsletter, Media Guide, Shirt, License Plate
Double	\$100	Newsletter, Media Guide, Sweatshirt, License Plate
Triple	\$250	Newsletter, Media Guide, Team Warm-Up Jacket, License Plate
Home Run	\$500	Newsletter, Media Guide, Team Warm-Up Jacket, License Plate, Team Autographed Softball
Grand Slam	\$1,000	Newsletter, Media Guide, Team Warm-Up Jacket, License Plate, Team Autographed Softball, Game Used Jersey



2010 KERNS SOFTBALL CAMPS

• Two Day Camp • June 23-24, 2010

The two-day Kerns Softball Camp will focus on teaching and practicing of all softball skills. Great for beginners and advanced players.

**For a camp application
log on to
www.ekusports.com**

• Four Day Camp • July 12-16, 2010

CAMP FEATURES

- Ages 8-18
- Intensive hands-on practice of all softball skills including: pitching, catching, position work, hitting, bunting, slapping, baserunning, strategy, scrimmages and game management
- Experienced and knowledgeable staff
- Player/Coach ratio of 8:1
- Individualized pitching and positional practice
- Camp t-shirt
- Instruction regarding strategy
- Special events, swimming and nightly contests
- Multi-level ability grouping

CAMP INFORMATION

Overnight Campers

Includes all meals, instruction, dorm, special events, camp t-shirt
*Check-in for overnight campers,
Sunday, July 11*

Campers

Includes lunch, instruction, camp t-shirt
*Check-in for day campers,
Monday, July 12, 8:30 a.m.*

FOR MORE INFORMATION

Camp Director - Jane Worthington
jane.worthington@eku.edu

Phone: (859) 622-1246 or (859) 622-2152
Fax: (859) 622-1250

201 Begley
Eastern Kentucky University
521 Lancaster Avenue
Richmond, KY 40475-3102

CAMP PHILOSOPHY

- We believe in hard work and hands-on training.
- Skill breakdown is imperative for the improvement of a player.
- Coach Worthington also believes camp size must be limited to ensure proper instruction.
- The Kerns softball camp employs a number of different college coaches. This allows players to showcase their talents while college coaches are present. Every coach is involved for all hands-on instruction.

OHIO VALLEY CONFERENCE



Beth DeBauche
Commissioner



Jennifer Gibbs
Assistant Commissioner



Brian Pulley
Assistant Commissioner



Kyle Schwartz
Assistant Commissioner



Brad Walker
Associate Commissioner



Heather Brown
Director of Media Relations

In its 62nd year, the Ohio Valley Conference continues to build on the success that has made it the nation's eighth-oldest NCAA Division I conference. For only the second time in a decade, the Conference expanded by adding Southern Illinois University Edwardsville as the league's 11th member in 2008. The move expanded the OVC's geographical footprint to the St. Louis market and marked the first change in membership since expanding to the state of Alabama in 2003.

The OVC's proud past dates back to 1948, but seeds for the new league were actually planted in 1941. It was then that Roy Stewart, the athletics director at Murray State, Charles (Turkey) Hughes, the athletics director at Eastern Kentucky, and Kelly Thompson, the public relations director at Western Kentucky, first broached the idea of forming a new conference. Discussions were put on hold by World War II, but reemerged Feb. 27-28, 1948 in Louisville as the three original institutions combined with Morehead State, Louisville and Evansville to form the OVC.

In the 1950s, the OVC became a pioneer on a much more significant scale socially. During times of racial segregation, league member Morehead State became one of the first non-traditionally black mid-southern institutions to accept a black student. In 1958, Marshall Banks earned athletically-related aid at Morehead, which signed a second black athlete, Howard Murphy, a year later. In 1961, Murphy earned all-conference recognition as a halfback in football. With racial barriers broken, the rest of the institutions in the league began to provide educational and athletic opportunities to African-Americans.

In the late 1970s, women's athletics began somewhat of a rebirth on the national scene as the NCAA began sponsoring and marketing women's sports. Recognizing the need to provide increased opportunities for female athletes, the OVC established women's championships in the sports of basketball, tennis and track in 1977, with cross country and volleyball added over the next four years. Those sports were initially governed by the Association of Intercollegiate Athletics for Women, but the overall strength of women's programs in the league was demonstrated by the automatic bids the OVC instantly received when the NCAA became the governing body in 1982.

Several coaches have made their mark in the relatively short history of OVC women's basketball. High on that list is Eastern Kentucky's Larry Joe Inman, who retired at the conclusion of the 2007-08 season. He won more than 150 games at Middle Tennessee and over 300 at EKU, led his teams to 16 conference championships, and earned OVC Coach of the Year honors a record eight times - five times at EKU and three at MTSU. He finished his career with 480 career victories.

Through the early years of the league, administrators wrestled with fan behavior due to the close proximity of the Conference members and the intense rivalries which developed. Just as it did decades ago, the OVC took the leadership role on what has become a national issue. In 1995, the OVC implemented a first-of-its-kind "Sportsmanship Statement," a policy which promotes principles of fair play, ethical conduct and respect for one's opponent. The statement has become a model for others to follow across the nation, and

has answered the challenge of the NCAA Presidents Commission to improve sportsmanship in collegiate athletics.

Additionally, the OVC annually presents the Steve Hamilton Sportsmanship Award to a junior or senior student-athlete with significant athletic contributions who best exemplifies the characteristics of sportsmanship and citizenship. Most recently, the Conference has also implemented the OVC Institutional and Team Sportsmanship Awards, which are presented to one institution and 18 sport-specific teams voted by their peers to have best exhibited the standards of sportsmanship and ethical conduct.

Over its 61 years, OVC teams have garnered national championships and bowl games in football, along with national team or individual titles in the sports of rifle, cross country, track and golf.

The playing field isn't the only place where OVC athletes are working hard. The league also recognizes excellence in the classroom. Six Scholar-Athlete Awards are presented yearly to male and female athletes, while others are commended for their academic success by being Medal of Honor recipients or earning a spot on the Commissioner's Honor Roll. Additionally, the league annually presents one institutional Academic achievement Award, as well as separate team awards in each Conference-sponsored sport.

The vision of leadership demonstrated by the Founding Fathers in 1948 remains alive today as the Ohio Valley Conference prepares for the future. One example is in regard to the current trend in collegiate athletics administration for increased involvement of university presidents in setting policies and making rules. The presidents of OVC institutions, however, have always governed the Conference, long before presidential governance became a national theme.

The Ohio Valley Conference sponsors the following sports: baseball, basketball, cross country, football, golf, tennis and track for men, and basketball, cross country, golf, soccer, softball, tennis, track and volleyball for women. In addition, the OVC also sponsors the combined men's and women's sport of rifle.

OVC All-Time Member List

University of Akron	1978-87
Austin Peay State University	1962-present
East Tennessee State University	1957-78
Eastern Illinois University	1996-present
Eastern Kentucky University	1948-present
University of Evansville	1948-52
Jacksonville State University	2003-present
University of Louisville	1948-49
Marshall University	1948-52
Middle Tennessee State University	1952-00
Morehead State University	1948-present
Murray State University	1948-present
Samford University	2003-2008
Southeast Missouri State University	1991-present
Southern Illinois Edwardsville	2008-present
University of Tennessee at Martin	1992-present
Tennessee State University	1986-present
Tennessee Technological University	1949-present
Western Kentucky University	1948-82
Youngstown State University	1981-88

2010 OPPONENTS



AUSTIN PEAY

Location Clarksville, Tenn.
Enrollment 10,188
Nickname (Colors) .. Lady Gobs (Red & White)
Conference Ohio Valley Conference
Head Coach Casey Dickson
Career Record 69-107, 5th
Record at APSU 15-38, 2nd
2009 Record (Conference) 15-38 (4-19)
Position Starters Returning/Lost 5/3
Pitchers Returning/Lost 3/2
Letterwinners R/L 11/7
Series Record EKU leads 45-10
SID Contact Brad Kirtley
SID Phone 931-221-7561
Email kirtleyb@apsu.edu
Website www.apsugovernors.com

CANISIUS

Location Buffalo, N.Y.
Enrollment 3,461
Nickname (Colors) .. Golden Griffins (Blue & Gold)
Conference Metro Atlantic Athletic
Head Coach Mike Rappl
Career Record 717-401-2, 31st
Record at CC 717-401-2, 31st
2009 Record (Conference) 26-25 (9-7)
Position Starters Returning/Lost 5/3
Pitchers Returning/Lost 1/2
Letterwinners R/L 11/5
Series Record Canisius leads 1-0
SID Contact Matt Reimour
SID Phone 716-888-2978
Email reitnoum@canisius.edu
Website www.gogriffs.com

COASTAL CAROLINA

Location Conway, S.C.
Enrollment 8,300
Nickname (Colors) .. Chanticleers (Teal, Bronze & Black)
Conference Big South Conference
Head Coach Kelley Green
Career Record 346-134, 10th
Record at CCU First Year
2009 Record (Conference) 15-38 (4-14)
Position Starters Returning/Lost 6/2
Pitchers Returning/Lost 2/1
Letterwinners R/L 11/5
Series Record First Meeting
SID Contact Teresa Garbee
SID Phone 843-349-2848
Email tgarbee@coastal.edu
Website www.gocusports.com

DAYTON

Location Dayton, Ohio
Enrollment 7,700
Nickname (Colors) Flyers (Red & Blue)
Conference Atlantic 10
Head Coach Cara Clark
Career Record 164-191, 9th
Record at UD 33-65, 3rd
2009 Record (Conference) 13-34 (9-12)
Position Starters Returning/Lost 8/1
Pitchers Returning/Lost 2/0
Letterwinners R/L 12/1
Series Record EKU leads 12-9
SID Contact Megan Jahrling
SID Phone 937-229-5180
Email jahrlimm@notes.udatyon.edu
Website www.daytonflyers.com

DEPAUL

Location Chicago, Ill.
Enrollment 25,072
Nickname (Colors) .. Blue Demons (Blue & Scarlet)
Conference Big East
Head Coach Eugene Lenti
Career Record 1,022-494-6, 29th
Record at DePaul 1,022-494-6, 29th
2009 Record (Conference) 39-14 (18-3)
Position Starters Returning/Lost 8/2
Pitchers Returning/Lost 1/1
Letterwinners R/L 15/4
Series Record First Meeting
SID Contact Bob Sakamoto
SID Phone 773-325-7525
Email rsakamot@depaul.edu
Website www.depaulbluedemons.com

EASTERN ILLINOIS

Location Charleston, Ill.
Enrollment 11,966
Nickname (Colors) Panthers (Blue & Gray)
Conference Ohio Valley Conference
Head Coach Kim Schuette
Career Record 104-112-1, 5th
Record at EIU 104-112-1, 5th
2009 Record (Conference) 25-29 (9-14)
Position Starters Returning/Lost 8/1
Pitchers Returning/Lost 2/2
Letterwinners R/L 13/2
Series Record EKU leads 29-17
SID Contact Bart Rettberg
SID Phone 217-581-6408
Email bvrettberg@eiu.edu
Website www.eiupanthers.com

ELON

Location Elon, N.C.
Enrollment 5,682
Nickname (Colors) . Phoenix (Maroon & Gold)
Conference Southern Conference
Head Coach Patti Raduenz
Career Record 209-280-2, 10th
Record at Elon 209-280-2, 10th
2009 Record (Conference) 15-32 (6-15)
Position Starters Returning/Lost 5/3
Pitchers Returning/Lost 3/1
Letterwinners R/L 10/4
Series Record EKU leads 1-0
SID Contact Jen Blackwell
SID Phone 336-278-6634
Email jblackwell2@elon.edu
Website www.elonphoenix.com

EVANSVILLE

Location Evansville, Ind.
Enrollment 2,699
Nickname (Colors) .. Purple Aces (Purple, Orange & White)
Conference Missouri Valley Conference
Head Coach Mark Redburn
Career Record 125-75, 5th
Record at Evansville 125-75, 5th
2009 Record (Conference) 14-34 (4-19)
Position Starters Returning/Lost 5/4
Pitchers Returning/Lost 2/2
Letterwinners R/L 10/6
Series Record Evansville leads 1-0
SID Contact Whitney Tarpy
SID Phone 812-488-2350
Email wt31@evansville.edu
Website www.gopurpleaces.com

HARTFORD

Location West Hartford, Conn.
Enrollment 4,697
Nickname (Colors) ... Hawks (Scarlet & White)
Conference America East
Head Coach Todd Randall
Career Record 247-400-3, 18th
Record at UH 220-298-2, 14th
2009 Record (Conference) 19-22 (9-9)
Position Starters Returning/Lost 4/3
Pitchers Returning/Lost 3/0
Letterwinners R/L 11/7
Series Record First Meeting
SID Contact Sarah Cote
SID Phone 860-768-5110
Email cote@hartford.edu
Website www.hartfordhawks.com

JACKSONVILLE

Location Jacksonville, Fla.
Enrollment 3,436
Nickname (Colors) ... Dolphins (Green & Gold)
Conference Atlantic Sun Conference
Head Coach Amanda Lehotak
Career Record 60-113, 4th
Record at Jacksonville 60-113, 4th
2009 Record (Conference) 24-31 (7-13)
Position Starters Returning/Lost 9/2
Pitchers Returning/Lost 4/0
Letterwinners R/L 17/3
Series Record First Meeting
SID Contact Brian DeLettre
SID Phone 904-256-7478
Email tdelett@ju.edu
Website www.judolphins.com

JACKSONVILLE STATE

Location Jacksonville, Ala.
Enrollment 8,957
Nickname (Colors) .. Gamecocks (Red & White)
Conference Ohio Valley Conference
Head Coach Jana McGinnis
Career Record 556-301, 17th
Record at JSU 556-301, 17th
2009 Record (Conference) 43-16 (19-2)
Position Starters Returning/Lost 5/3
Pitchers Returning/Lost 1/4
Letterwinners R/L 8/7
Series Record JSU leads 14-6
SID Contact Josh Underwood
SID Phone 256-782-5915
Email underwood@jsu.edu
Website www.jsugamecocksports.com

KENTUCKY

Location Lexington, Ky.
Enrollment 27,000
Nickname (Colors) Wildcats (Blue & White)
Conference Southeastern Conference
Head Coach Rachel Lawson
Career Record 143-144, 6th
Record at UK 51-60, 3rd
2009 Record (Conference) 34-23 (13-14)
Position Starters Returning/Lost 8/0
Pitchers Returning/Lost 3/0
Letterwinners R/L 16/4
Series Record UK leads 15-7
SID Contact Deb Moore
SID Phone 859-257-8506
Email deb.moore@uky.edu
Website www.ukathletics.com

LIBERTY

Location Lynchburg, Va.
Enrollment 11,311
Nickname (Colors) ... Lady Flames (Red, White & Blue)
Conference Big South
Head Coach Paul Wetmore
Career Record 439-496-1, 16th
Record at LU 439-496-1, 16th
2009 Record (Conference) 26-35 (10-8)
Position Starters Returning/Lost 8/1
Pitchers Returning/Lost 1/1
Letterwinners R/L 9/2
Series Record LU leads 5-1
SID Contact Jennifer Shelton
SID Phone 434-592-4849
Email jbselton2@liberty.edu
Website www.libertyflames.com

LIPSCOMB

Location Nashville, Tenn.
Enrollment 3,418
Nickname (Colors) .. Lady Bisons (Purple & Gold)
Conference Atlantic Sun Conference
Head Coach Kristin Ryman
Career Record 105-102-1, 5th
Record at Lipscomb 105-102-1, 5th
2009 Record (Conference) 39-14 (15-5)
Position Starters Returning/Lost 9/0
Pitchers Returning/Lost n/a
Letterwinners R/L 13/2
Series Record Lipscomb leads 3-2
SID Contact Mark McGee
SID Phone 615-966-5862
Email mark.mcgee@lipscomb.edu
Website www.lipscombsports.com

MARYLAND-BALTIMORE CO.

Location Baltimore, Md.
Enrollment 12,870
Nickname (Colors) .. Retrievers (Black & Gold)
Conference America East
Head Coach Joe French
Career Record 491-305-1, 17th
Record at UMBC 277-196-1, 9th
2009 Record (Conference) 34-21 (12-8)
Position Starters Returning/Lost 8/1
Pitchers Returning/Lost 2/2
Letterwinners R/L 16/4
Series Record EKU leads 1-0
SID Contact Jessica Bernheim
SID Phone 410-455-2639
Email jbernheim@umbc.edu
Website www.umbcretreivers.com

MIAMI (OHIO)

Location Oxford, Ohio
Enrollment 16,300
Nickname (Colors) ... RedHawks (Red & White)
Conference Mid-American Conference
Head Coach Kelly Kovach Schoenly
Career Record 82-86-1, 4th
Record at Miami 82-86-1, 4th
2009 Record (Conference) 33-24 (13-9)
Position Starters Returning/Lost 7/2
Pitchers Returning/Lost 4/0
Letterwinners R/L 13/3
Series Record Miami (Ohio) leads 7-2
SID Contact Michael Roth
SID Phone 513-529-7092
Email rothmb@muohio.edu
Website www.muredhawks.com



2010 OPPONENTS

MOREHEAD STATE

Location Morehead, Ky.
 Enrollment 8,981
 Nickname (Colors) .. Eagles (Royal Blue & Gold)
 Conference Ohio Valley Conference
 Head Coach Holly Bruder
 Career Record 214-141, 9th
 Record at MSU 69-36, 3rd
 2009 Record (Conference) 35-20 (15-9)
 Position Starters Returning/Lost 8/1
 Pitchers Returning/Lost 3/0
 Letterwinners R/L 14/2
 Series Record EKU leads 40-19
 SID Contact Matt Schabert
 SID Phone 606-783-2556
 Email m.schabert@moreheadstate.edu
 Website www.msueagles.com

MURRAY STATE

Location Murray, Ky.
 Enrollment 10,078
 Nickname (Colors) Racers (Navy & Gold)
 Conference Ohio Valley Conference
 Head Coach Jay Pyron
 Career Record 0-0, 1st
 Record at Murray State 0-0, 1st
 2009 Record (Conference) none
 Position Starters Returning/Lost n/a
 Pitchers Returning/Lost n/a
 Letterwinners R/L n/a
 Series Record First Meeting
 SID Contact Teri LaJeunesse
 SID Phone 270-809-3351
 Email teri.lajeunesse@murraystate.com
 Website www.goracers.com

NORTH CAROLINA A&T

Location Greensboro, N.C.
 Enrollment 10,660
 Nickname (Colors) Aggies (Blue & Gold)
 Conference Mid-Eastern Athletic Conf.
 Head Coach Mamie Jones
 Career Record 276-474-1, 16th
 Record at N.C. A&T 276-474-1, 16th
 2009 Record (Conference) 26-23 (5-7)
 Position Starters Returning/Lost 8/0
 Pitchers Returning/Lost 2/0
 Letterwinners R/L 14/3
 Series Record N.C. A&T leads 1-0
 SID Contact Darlene Mitchell
 SID Phone 336-334-7141
 Email nichelle512@yahoo.com
 Website www.ncataggies.com

NORTH CAROLINA STATE

Location Raleigh, N.C.
 Enrollment 32,782
 Nickname (Colors) Wolfpack (Red & White)
 Conference Atlantic Coast Conference
 Head Coach Lisa Navas
 Career Record 554-280-1, 16th
 Record at NCSU 219-146, 7th
 2009 Record (Conference) 23-25 (5-13)
 Position Starters Returning/Lost 7/2
 Pitchers Returning/Lost 3/1
 Letterwinners R/L 17/5
 Series Record First Meeting
 SID Contact Brandon Yopp
 SID Phone 919-513-8195
 Email brandon_yopp@ncsu.edu
 Website www.gopack.com

SOUTH CAROLINA UPSTATE

Location Spartanburg, S.C.
 Enrollment 5,268
 Nickname (Colors) . Spartans (Green, White & Black)
 Conference Atlantic Sun Conference
 Head Coach Chris Hawkins
 Career Record 517-248-1, 16th
 Record at USC Upstate 517-248-1, 16th
 2009 Record (Conference) 29-16 (11-9)
 Position Starters Returning/Lost 7/2
 Pitchers Returning/Lost 2/1
 Letterwinners R/L 12/8
 Series Record First Meeting
 SID Contact Bill English
 SID Phone 864-503-5129
 Email benglish@uscupstate.edu
 Website www.upstatespartans.com

SOUTHEAST MISSOURI

Location Cape Girardeau, Mo.
 Enrollment 10,859
 Nickname (Colors) .. Redhawks (Red, White & Black)
 Conference Ohio Valley Conference
 Head Coach Lana Richmond
 Career Record 785-552-2, 28th
 Record at SEMO 785-552-2, 28th
 2009 Record (Conference) 29-21 (16-8)
 Position Starters Returning/Lost 7/1
 Pitchers Returning/Lost 3/0
 Letterwinners R/L 11/1
 Series Record SEMO leads 30-23
 SID Contact Patrick Clark
 SID Phone 573-651-2937
 Email paclark@semo.edu
 Website www.gosoutheast.com

TENNESSEE-MARTIN

Location Martin, Tenn.
 Enrollment 8,100
 Nickname (Colors) ... Skyhawks (Navy Blue & Orange)
 Conference Ohio Valley Conference
 Head Coach Donley Canary
 Career Record 244-206-1, 9th
 Record at UTM 244-206-1, 9th
 2009 Record (Conference) 38-24 (13-10)
 Position Starters Returning/Lost 6/2
 Pitchers Returning/Lost 2/2
 Letterwinners R/L 15/5
 Series Record EKU leads 32-24
 SID Contact Matt Maxey
 SID Phone 731-881-7632
 Email mmmaxey@utm.edu
 Website www.utmsports.com

TENNESSEE STATE

Location Nashville, Tenn.
 Enrollment 9,024
 Nickname (Colors) ... Tigers (Royal Blue & White)
 Conference Ohio Valley Conference
 Head Coach Joyce Maudie
 Career Record 356-522, 20th
 Record at TSU 133-269, 9th
 2009 Record (Conference) 18-31 (8-15)
 Position Starters Returning/Lost 8/2
 Pitchers Returning/Lost 4/0
 Letterwinners R/L 13/3
 Series Record EKU leads 47-7
 SID Contact Zekeya Anderson
 SID Phone 615-963-1867
 Email zanderson01@tnstate.edu
 Website www.tsutigers.com

TENNESSEE TECH

Location Cookeville, Tenn.
 Enrollment 10,850
 Nickname (Colors) .. Golden Eagles (Purple & Gold)
 Conference Ohio Valley Conference
 Head Coach Tory Acheson
 Career Record 720-345-2, 19th
 Record at TTU 430-264, 13th
 2009 Record (Conference) 26-31 (10-12)
 Position Starters Returning/Lost 7/3
 Pitchers Returning/Lost 3/1
 Letterwinners R/L 11/8
 Series Record TTU leads 46-27
 SID Contact Steve Appelhaus
 SID Phone 931-372-3293
 Email appelhaus@tntech.edu
 Website www.ttusports.com

TOWSON

Location Towson, Md.
 Enrollment 21,177
 Nickname (Colors) .. Tigers (Gold, Black & White)
 Conference Colonial Athletic Association
 Head Coach Lisa Costello
 Career Record 412-370-2, 15th
 Record at Towson 412-370-2, 15th
 2009 Record (Conference) 34-22 (13-8)
 Position Starters Returning/Lost 7/2
 Pitchers Returning/Lost 3/0
 Letterwinners R/L 15/5
 Series Record First Meeting
 SID Contact Megan O'Brien
 SID Phone 410-704-4972
 Email mobrien@towson.edu
 Website www.towsontigers.com

WESTERN KENTUCKY

Location Bowling Green, Ky.
 Enrollment 19,761
 Nickname (Colors) ... Lady Toppers (Red & White)
 Conference Sun Belt Conference
 Head Coach Tyra Perry
 Career Record 209-247, 9th
 Record at WKU 63-49, 3rd
 2009 Record (Conference) 35-19 (14-9)
 Position Starters Returning/Lost 5/5
 Pitchers Returning/Lost 0/2
 Letterwinners R/L 11/5
 Series Record WKU leads 7-6
 SID Contact Kelly Oravet
 SID Phone 270-745-4298
 Email kelly.oravet@wku.edu
 Website www.wkusports.com

WINSTON-SALEM STATE

Location Winston-Salem, N.C.
 Enrollment 6,442
 Nickname (Colors) ... Lady Rams (Red & White)
 Conference Mid-Eastern Athletic
 Head Coach Lataya Hilliard-Gray
 Career Record 134-157-2, 8th
 Record at WSSU 134-157-2, 8th
 2009 Record (Conference) 14-26 (None)
 Position Starters Returning/Lost 4/6
 Pitchers Returning/Lost 0/2
 Letterwinners R/L 5/7
 Series Record First Meeting
 SID Contact Trevin Q. Goodwin
 SID Phone 336-750-2909
 Email goodwintq@wssu.edu
 Website www.wssurams.com





EKU ATHLETICS FACILITIES

The Chad Bratzke Student-Athlete Academic Success Center is one of the newer facilities on ECU's campus and is competitive with the top academic support facilities in the nation. Located in Alumni Coliseum, the Bratzke Center is designated to aid Eastern Kentucky student-athletes in all facets of their academic pursuits.

Former ECU All-American football player and 11-year National Football League veteran Chad Bratzke was instrumental in furnishing the center with his generous gift to Eastern Kentucky athletics.

Included in the academic facility are tutoring stations, quiet study areas, a computer lab and administrative offices. Within the Bratzke Center, student-athletes are provided academic support, guidance in class registration, supervised study tables, access to computers, and intense tutoring in all subject areas. The Bratzke Center is staffed by full-time director Dr. Randy Kennedy, two academic advisors, graduate assistants and a cadre of tutorial help.

The standards and goals of academic excellence within the Eastern Kentucky University softball program will continue throughout the years to come.



Housed in the Moberly building, Eastern Kentucky University's varsity weight room is a state-of-the-art facility that provides ECU's student-athletes the opportunity to enhance their abilities by making use of top-of-the-line equipment.

Boasting a mission statement which reads: "to create more explosive, dynamic athletes by using multi-joint movements," the 5,000 square foot weight room contains 16,000 pounds of total weight. Built in 2001, the facility features Eleiko model Olympic weights, York dumbbells with two sets each from 5-150 pounds and Nebula power stations and racks.

Head Strength and Conditioning Coach Jon-Michael Davis and his assistant, Chad Scott, are charged with overseeing all of ECU's 300+ student-athletes. Their efforts, however, are supplemented by the four-person training room staff which is also housed inside the Moberly building, allowing student-athletes the opportunity for fast and convenient treatment.



Eastern Kentucky's student-athletes benefit from one of the finest sports medicine facilities anywhere in the country.

The training room is located in the Moberly Building adjacent to the athletic weight room and is open for use by any ECU student-athlete.

The large space is occupied by the most modern training and rehabilitation equipment available. The training room features several tables used during treatment and rehabilitation, taping tables, a wet room that features whirlpools and a four-foot-deep rehab pool that includes a submerged treadmill for aquatic rehab exercises. The area also contains all of the latest modalities, helping injured student-athletes get back into the game as quickly as possible.

The athletic training room also houses an examination room used by team doctors. The physicians are regularly on site and perform evaluations, while assisting the sports medicine staff in ensuring the health of every student-athlete.

David T. Green, the Director of Sports Medicine, supervises all of ECU's efforts, and is joined by full-time assistants Tiffany Napier, Tim Pike and Dave Brajuha as well as a host of graduate assistants and students who are involved in the University's athletic training education program.



WHAT IS AN EXTRA BENEFIT?

The NCAA defines an extra benefit as any special arrangement by an institutional employee or a representative of the institution's athletics interest (booster) to provide a student-athlete, or a student-athlete's relative or friend, a benefit that is not generally available to other Eastern Kentucky University students and their relatives and/or friends or, is not expressly authorized by NCAA legislation. Therefore, please be aware of the following:

- * A student-athlete cannot accept anything from a booster or an employee of ECU that would be considered an extra benefit not available to the general student body. Examples include the use of a car, clothing, gifts, money, tickets, entertainment, etc.
- * A student-athlete cannot accept free or reduced-cost room and board from any ECU employee or booster of ECU. A student-athlete cannot accept free or reduced merchandise or services from any merchant unless that free or reduced cost item is also available to the general public and/or student body.
- * A student-athlete cannot receive a special discount arrangement or credit on a purchase (e.g., airline ticket, clothing) or service (e.g., laundry, dry cleaning) from an employee of ECU or a booster.
- * A student-athlete cannot eat at a restaurant as the guest of an athletics booster or an employee of ECU.
- * On infrequent, special occasions (e.g., birthday), a student-athlete may accept an invitation to the home of an employee of ECU or booster for a meal.
- * A student-athlete cannot use a Department of Athletics' copy machine/fax machine or make long distance phone calls using departmental equipment or the long distance access code of an employee of ECU or a booster.
- * A booster or employee of ECU cannot type reports, letters, papers, etc., for a student-athlete.
- * An ECU employee or booster cannot provide a student-athlete with a loan of money, a guarantee of bond, the use of an automobile or the signing of a note to arrange a loan.
- * A student-athlete may accept frequent flyer points and/or miles earned while traveling to and from intercollegiate practice and/or competition.

For more information about permissible and impermissible booster activities, please call Lindsey McKaskle in the ECU Compliance office (859) 622-8541 or send an e-mail message to lindsey.mckaskle@eku.edu.



Seniors



Juniors



Sophomores



Freshmen

EKU



2010 SCHEDULE

FEBRUARY

19	(Fri)	vs. Liberty University ¹	5 p.m.
20	(Sat)	vs. Maryland-Baltimore County ¹	11 a.m.
20	(Sat)	at South Carolina Upstate ¹	1 p.m.
21	(Sun)	vs. TBA ¹	TBA
26	(Fri)	vs. Jacksonville ²	11 a.m.
26	(Fri)	vs. Canisius ²	1:45 p.m.
27	(Sat)	vs. Jacksonville ²	4:45 p.m.
27	(Sat)	at Coastal Carolina ²	7 p.m.
28	(Sun)	vs. DePaul ²	12:15 p.m.

MARCH

6	(Sat)	vs. Evansville ³	11 a.m.
6	(Sat)	at Lipscomb ³	3:30 p.m.
7	(Sun)	vs. Murray State ³	11 a.m.
7	(Sun)	vs. Evansville ³	1:15 p.m.
9	(Tue)	at North Carolina A&T (DH)	1 p.m.
10	(Wed)	at Elon University (DH)	TBA
12	(Fri)	vs. Hartford ⁴	4 p.m.
12	(Fri)	vs. North Carolina State ⁴	6 p.m.
13	(Sat)	vs. Towson University ⁴	2 p.m.
13	(Sat)	vs. Winston-Salem State ⁴	6 p.m.
14	(Sun)	vs. South Carolina Upstate ⁴	11 a.m.
17	(Wed)	WESTERN KENTUCKY (DH)	3 p.m.
20	(Sat)	at Tennessee-Martin* (DH)	2 p.m.
21	(Sun)	at Tennessee-Martin*	2 p.m.
27	(Sat)	SOUTHEAST MISSOURI* (DH)	1 p.m.
28	(Sun)	SOUTHEAST MISSOURI*	1 p.m.
30	(Tue)	at Morehead State* (DH)	2 p.m.

APRIL

2	(Fri)	TENNESSEE STATE* (DH)	1 p.m.
3	(Sat)	TENNESSEE STATE*	1 p.m.
5	(Mon)	UNIVERSITY OF DAYTON (DH)	2 p.m.
6	(Tue)	MIAMI (OHIO) (DH)	2 p.m.
10	(Sat)	at Eastern Illinois* (DH)	2 p.m.
11	(Sun)	at Eastern Illinois*	1 p.m.
14	(Wed)	MOREHEAD STATE*	2 p.m.
17	(Sat)	at Jacksonville State* (DH)	2 p.m.
18	(Sun)	at Jacksonville State*	2 p.m.
24	(Sat)	MURRAY STATE* (DH)	1 p.m.
25	(Sun)	MURRAY STATE*	1 p.m.
27	(Tue)	UNIVERSITY OF KENTUCKY	2 p.m.

MAY

1	(Sat)	at Tennessee Tech* (DH)	2 p.m.
2	(Sun)	at Tennessee Tech*	2 p.m.
8	(Sat)	AUSTIN PEAY* (DH)	1 p.m.
9	(Sun)	AUSTIN PEAY*	1 p.m.
13-15	(Thur-Sat)	Ohio Valley Conference Tournament	
21-23	(Fri-Sun)	NCAA Regionals	TBA
28-29	(Fri-Sat)	NCAA Super Regionals	TBA

JUNE

3-9	(Thur-Wed)	NCAA College World Series	TBA
-----	------------	---------------------------	-----

(DH) Denotes Double Header, * Denotes OVC Game

¹ Campus Suites Spartan Classic (USC Upstate - Spartanburg, S.C.)

² Kickin' Chicken Classic (Coastal Carolina - Conway, S.C.)

³ Lipscomb Tournament (Nashville, Tenn.)

⁴ Winthrop/adidas Invitational (Rock Hill, S.C.)