

1-1-2010

Women's Golf - 2010-11

Eastern Kentucky University Sports

Follow this and additional works at: http://encompass.eku.edu/sports_mg_wgolf

Recommended Citation

Eastern Kentucky University Sports, "Women's Golf - 2010-11" (2010). *Golf - Women*. Book 1.
http://encompass.eku.edu/sports_mg_wgolf/1

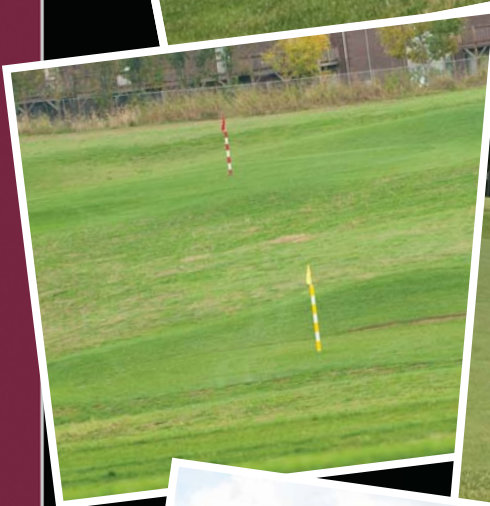
This Book is brought to you for free and open access by the Sports Media Guides at Encompass. It has been accepted for inclusion in Golf - Women by an authorized administrator of Encompass. For more information, please contact Linda.Sizemore@eku.edu.



EKU

2010-11 WOMEN'S GOLF

Colonel Golf & Learning Center



FEATURES

- Golf shop
- 7,000 sq. ft. putting green
- 3,200 sq. ft. chipping /pitching green
- Two sand bunkers
- Short game area
- Two large teeing areas
- Cool Range canopy for inclement weather
- Driving range building
 - > Indoor heated stalls for winter practice
 - > Indoor putting surface
 - > Two indoor video instruction rooms
 - > Golf fitness/exercise room
 - > Club repair
 - > Professional club fitting with Vector Pro Launch Monitor

**Table Of Contents**

Quick Facts	1
-------------------	---

2010-11 EKU WOMEN'S GOLF

2010-11 Schedule	2
2010-11 Colonel Roster	3
Head Coach Mike Whitson	4

MEET THE 2010-11 COLONELS

Gabrielle Andersson	5
Taylor Church	5
Kara Fant	6
Linda Hogberg	6
Lindsey Rankin	7
Lissanne Schmidt	7
Katie Wiedmar	8
April Emerson	8
Alex Schmidt	9
Katy Humphrey	9

2009-10 SEASON REVIEW

Individual & Team Statistics	10
Results	11

WOMEN'S GOLF PROGRAM HISTORY

Year-By-Year Results	12
All-Time Honors	13
Team Top Finishes	13
Team Low Scores	14
Individual Top Finishes	14-15
Individual Low Scores	15

MEDIA INFORMATION

Media Information	16
-------------------------	----

2010-11 Quick Facts**GENERAL INFORMATION**

Location	Richmond, Ky.
Founded (Enrollment)	1906 (16,515)
Nickname (Colors)	Colonels (Maroon and White)
Affiliation	NCAA Division I
Conference	Ohio Valley Conference
Arena (Capacity)	McBrayer Arena (6,500)
President	Dr. Doug Whitlock
Director of Athletics	Mark Sandy
Senior Woman Administrator	Lindsey McKaskle

PROGRAM INFORMATION

First Year Of Women's Golf	1993-94
NCAA Tournament Appearances	None
OVC Tournament Championships	1 (1996)

COACHING STAFF

Head Coach	Mike Whitson
Alma Mater	Eastern Kentucky '98
Office Phone Number	(859) 622-8039
Email	mike.whitson@eku.edu

TEAM INFORMATION

2010 Ohio Valley Conference Finish	5th
Letterwinners Returning / Lost	9 / 0
Newcomers	1

ATHLETIC PUBLIC RELATIONS**Assistant Director of Athletic****Public Relations (WG Contact) Kevin Britton**

Email	kevin.britton@eku.edu
Office Phone	(859) 622-2006
Cell Phone	(859) 358-8359

Director of Athletic Public Relations Mike Clark

Clark's Email michael.clark@eku.edu

Assistant Director of APR Steve Fohl

Fohl's Email steve.fohl@eku.edu

Athletic Public Relations Fax (859) 622-5108

APR Mailing Address 521 Lancaster Avenue

..... Alumni Coliseum 115

..... Richmond, KY 40475

EKU Athletics Website www.EKUSports.com

EKU Website www.EKU.edu

OVC Website www.OVCSports.com

Credits

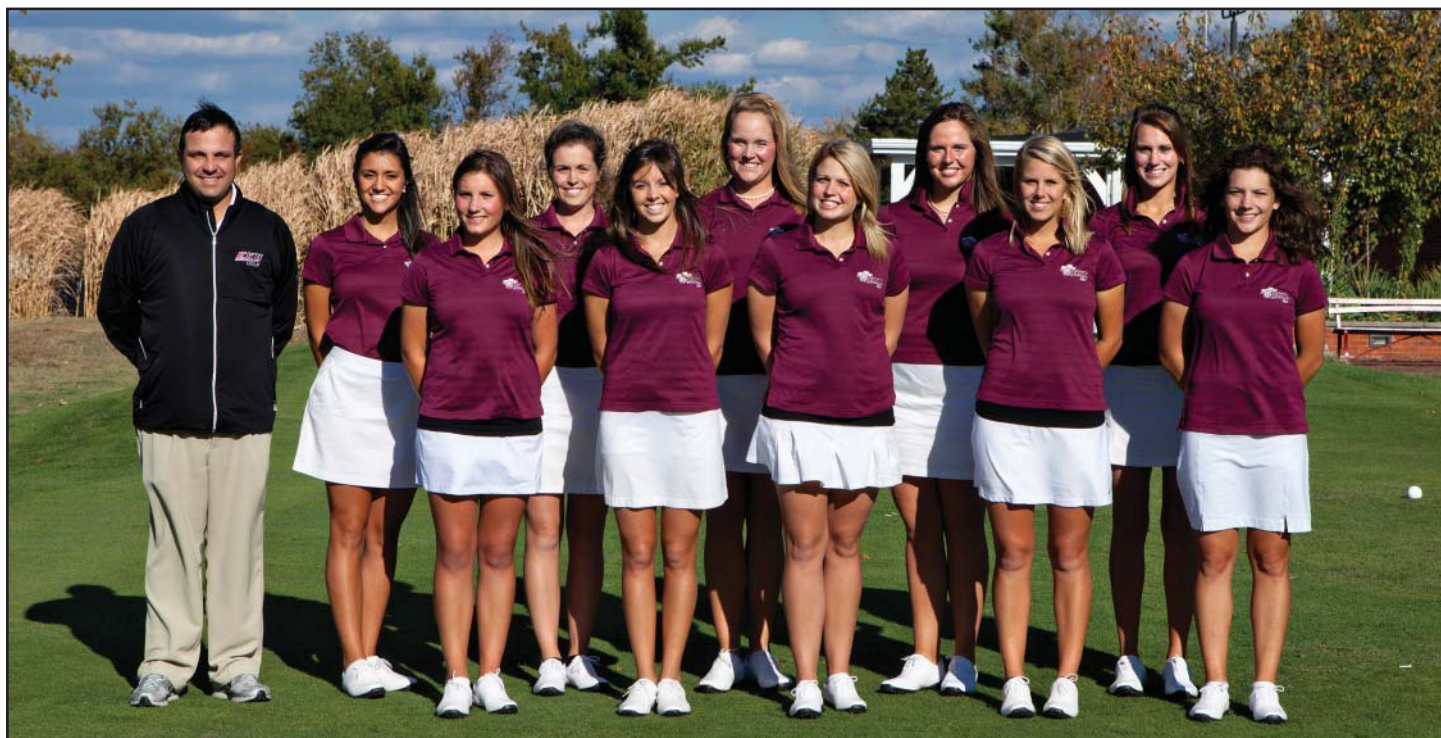
The 2010-11 Eastern Kentucky University Women's Golf Informational Guide was produced by the Eastern Kentucky Athletic Public Relations Department. The guide was designed, written and edited by Kevin Britton with special assistance from Richmond Bramblet. Photography by Chris Radcliffe.

**2010-11 Schedule**

<u>DATE</u>	<u>EVENT</u>	<u>COURSE</u>	<u>LOCATION</u>
8/29 Sun	Morehead State/Marshall/EKU Tri Match	Eagle Trace Golf Course (18)	Morehead, Ky.
9/13-14 Mon-Tue	Murray State Drake Creek Fall Invitational	Drake Creek Golf Club (36-18)	Ledbetter, Ky.
9/27-28 Mon-Tue	Ball State Cardinal Classic	The Player's Club (18-18)	Yorktown, Ind.
10/11-12 Mon-Tue	3rd Annual Zippy Invitational (Univ. of Akron)	Rosemont Country Club (36-18)	Fairlawn, Ohio
10/18-19 Mon-Tue	F&M Bank APSU Intercollegiate	Clarksville Country Club(18-18)	Clarksville, Tenn.
10/25-26 Mon-Tue	Palmetto Intercollegiate	Oak Point Golf Club (36-18)	Kiawah Island, S.C.
2/28-3/1 Mon-Tue	Islander Classic	Corpus Christi Country Club (36-18)	Corpus Christi, Texas
3/10-12 Thur-Sat	EKU EL DIABLO INTERCOLLEGIATE	EL DIABLO GOLF AND COUNTRY CLUB (18-18-18)	CITRUS SPRINGS, Fla.
3/19-20 Sat-Sun	C&F Bank Intercollegiate (William & Mary)	Blue Heron Course at Ford's Colony (18-18)	Williamsburg, Va.
3/27-28 Mon-Tue	Saluki Invitational (Southern Illinois University)	Hickory Ridge Golf Center (18-18)	Carbondale, Ill.
4/9-10 Sat-Sun	EKU LADY COLONEL CLASSIC	ARLINGTON GOLF CLUB (36-18)	RICHMOND, Ky.
4/21-23 Thur-Sat	Ohio Valley Conference Championship (TSU)	GreyStone Golf Club (18-18-18)	Dickson, Tenn.
5/5-7 Thur-Sat	NCAA Regional	TBA	TBA
5/17-20 Tue-Fri	NCAA Championship (Texas A&M University)	Traditions Golf Club	College Station, Texas

**2010-11 Roster**

<u>NAME</u>	<u>CLASS</u>	<u>HOMETOWN (PREVIOUS SCHOOL)</u>
Gabrielle Andersson	Sr.	Stockholm Sweden (Konsumentforeningen Stockholms Gymnasium)
Taylor Church	Jr.	Louisville, Ky. (Christian Academy of Louisville)
Kara Fant	Jr.	Belton, S.C. (T.L. Hanna High School)
Linda Hogberg	Jr.	Abbebas, Sweden (ProCivitas Privata Gymnasium)
Lindsey Rankin	Jr.	Stanford, Ky. (Lincoln County High School)
Lisanne Schmidt	Jr.	Grantham, N.H. (Lebanon High School)
Katie Wiedmar	Jr.	Louisville, Ky. (Mercy Academy)
April Emerson	So.	Jamestown, Ky. (Russell County High School)
Alex Schmidt	So.	Grantham, N.H. (Lebanon High School)
Katy Humphrey	Fr.	Paintsville, Ky. (Paintsville High School)







Head Coach

Mike Whitson

Eastern Kentucky University, '98

First Season • Paris, Ky.

Former Eastern Kentucky University men's golfer Mike Whitson was selected as the new EKU women's golf head coach in August. Whitson was a four-year letterwinner for the Colonels from 1994 to 1998, helping the team to a second-place Ohio Valley Conference finish and capturing All-OVC honors in 1998.

"The opportunity to be the next women's golf coach at EKU is very exciting for me," Whitson said. "I would like to thank Mark Sandy and the entire university for selecting me. It is an honor to return home and coach at my alma mater. I am looking forward to the next few weeks of getting to know our players and starting our hard work for a successful season."

The Paris, Ky., native has spent the past five years as the head women's golf coach at Indiana State University. Whitson was hired in 2005 and charged with restarting the women's program after a 28-year hiatus. His first Sycamore team (2006-07) placed eighth among 10 teams in the 2007 Missouri Valley Conference tournament. By 2009, Whitson had his squad up to sixth. This past season, ISU turned in its best performance, a third place finish. In four seasons of competition, he coached four All-MVC selections.

In addition to their success on the links, Whitson's student-athletes have excelled in the classroom. In July the Sycamores were listed fourth on the National Golf Coaches Association's (NGCA) top-25 list of team grade point averages. Whitson's squad had the highest team GPA among NCAA Division I institutions. Three Sycamores were selected to the NGCA All-American Scholar Team for Division I. In four seasons Whitson coached 17 NGCA All-American Scholar Team selections, including five each in 2006-07 and 2007-08.

Whitson spent three seasons (2001-04) as an assistant women's golf coach

Mike Whitson Year-By-Year			
2000-01	Transylvania	Head Coach	at the University of Tennessee. He helped UT advance to the NCAA tournament each season, including the NCAA Championships during the spring of 2004 where the team placed 11th. The 2002-03 regular season also saw great success as the Lady Vols set a school record by winning
2001-02	Tennessee	Asst. Coach	
2002-03	Tennessee	Asst. Coach	
2003-04	Tennessee	Asst. Coach	
2005-06	Indiana State	Head Coach	
2006-07	Indiana State	Head Coach	
2007-08	Indiana State	Head Coach	
2008-09	Indiana State	Head Coach	
2009-10	Indiana State	Head Coach	
2010-11	Eastern Kentucky	Head Coach	

three tournament titles, including the Lady Boilermaker Invitational, the Auburn Tiger Derby, and the Lady Kat Invitational.

Tennessee was a regular in the top 10 nationally during Whitson's tenure at UT, and reached as high as No. 2 in the NGCA Division I Coaches poll. He also coached three All-Americans, three Academic All-Americans, and three future LPGA Tour members; Jessica Shepley, Young-A Yang and Violeta Retamoza.

Whitson's collegiate coaching career began at Transylvania University in Lexington, Ky. In 2000-01, his only season at the school, Whitson led the women's golf team to a No. 16 ranking in the National Association of Intercollegiate Athletics (NAIA). He guided the team to a first-place finish and three second-place performances. In addition, he coached sophomore Catherine Benson to a third-place finish at the NAIA Nationals, earning her All-America honors.

As a senior in 1998, Whitson fired a second round score of 64 at the OVC tournament. He finished tied for third with a three-round total of 214, two shots under par. During his collegiate career Whitson also served as the president of the Student-Athlete Advisory Committee.

As an amateur, he won the Michelob Classic in May 1997 and the Club Car Classic in May 1998. He was also runner-up at the Kentucky State Amateur Championship in 1997 and 1998. After concluding his collegiate career, Whitson played on a number of professional golf tours, including the Hooters Tour, Central Florida Tour and Development Players Tour. As a pro, he claimed the 1998 Owensboro Open title and finished among the top 10 in five other events.

Whitson earned a bachelor's degree in physical education from EKU in 1998. He completed a master's degree in education with an emphasis in athletic administration at the University of Kansas in 2005. Whitson and his wife Autumn reside in Richmond with their daughter Leeann, who was born on May 21, 2010.






Senior

Gabrielle Andersson

Stockholm, Sweden

AS A JUNIOR (2009-10)

Played in eight of the team's 11 events ... finished in the top-20 twice ... tied for second at the Drake Creek Fall Invitational ... posted a 54-hole score of 225 at the Drake Creek Fall Invitational, the third lowest three-round score in program history ... tied for 12th at the C&F Bank Intercollegiate ... posted a stroke average of 81.4 ... 2009-10 Colonel Scholar.

AS A SOPHOMORE (2008-09)

Second team All-Ohio Valley Conference selection ... OVC All-Tournament team selection ... led the team with four top-20 finishes, three top-10 finishes and a 79.2 stroke average ... posted 11th best stroke average in the OVC ... tied for eighth at the Ball State Cardinal Classic, the best finish by a Colonel during the fall ... tied her career-best with a 73 in the first round of the Cardinal Classic ... tied for 13th at the final event of the fall, the Troy University Trojan Invitational ... tied for 10th at the ECU Spring Invitational ... placed tied for fifth at the OVC Championship ... 2008-09 Colonel Scholar.

AS A FRESHMAN (2007-08)

Played in all 12 events and posted the second-best stroke average (80.0) on the team ... posted her best finish of the season in the final event of 2007-08, the OVC Championships, where she tied for sixth overall and led the Colonels to a third place finish ... finished her first season with four top-20 finishes ... tied for 21st at the season opening Chris Banister Gamecock Classic, the first event of her collegiate career ... opened the Napa River Grill Cardinal Cup with a career-low 73 in the first round ... her three round total of 230 at the Cardinal Cup was the lowest 54-hole score by a Colonel all season ... posted back-to-back top-20 finishes at the NewWave Racer Classic (T-18) and the ECU El Diablo Intercollegiate (T-14) ... also had a top-20 finish at the ECU Spring Invitational (T-14).

PERSONAL

Full name is Gabrielle Maria Andersson ... born May 13, 1988 ... daughter of Ewa and Jan Andersson ... has one brother, Jonas ... her brother Jonas was a collegiate swimmer at UNLV and represented Sweden in the 2008 Olympics ... majoring in political science.

**ANDERSSON'S CAREER STATISTICS**

	Evnts	Rds	Strks	Avg	1st	T-5	T-10	Low Rnd	Low 36	Low 54	Par/-Rnds
2007-08	12	27	2161	80.0	0	0	1	73	157	230	0
2008-09	10	25	1981	79.2	0	1	3	73	149	232	0
2009-10	8	20	1628	81.4	0	1	1	74	156	225	0
TOTALS	30	72	5770	80.1	0	2	5	73	149	225	0



Junior

Taylor Church

Louisville, Ky. (Christian Academy)

AS A SOPHOMORE (2009-10)

Played in nine of the teams events, twice as an individual ... posted the fourth best scoring average on the team (80.7) ... tied for 16th at the MSU/Marshall/EKU Tri Match for best finish of season ... fired a season low single round score of 75 in the third round of the Drake Creek Fall Invitational ... posted single round scores of 76 achieved in both the Napa River Grill Cardinal Cup and the 2009 Pinehurst Challenge ... finished tied for 23rd at the 2010 OVC Championship ... earned a spot on the Ohio Valley Conference Commissioner's Honor Roll ... 2009-10 Presidential Honor Roll (4.0) ... 2009-10 Colonel Scholar.

AS A FRESHMAN (2008-09)

Posted the third best scoring average on the team (81.9) ... played in all 10 events during her first collegiate season ... posted a top-20 finish in her second collegiate event, finishing a team-best tied for 18th at the Wolverine Invitational ... her lowest round was a 76 in the third round of the LPGA International-Xavier Invitational ... finished 23rd in her first appearance at the OVC Championship ... earned a spot on the Ohio Valley Conference Commissioner's Honor Roll ... 2008-09 Colonel Scholar.

HIGH SCHOOL

Finished second in the region and 15th in the state as a junior at the Christian Academy of Louisville ... posted a third place regional finish and another top-20 state finish as a senior ... earned the state tournament sportsmanship award her senior season ... she placed second overall (16-18 age group) on the Mus-selman Dunne/Coke Tour in the summer of 2006 ... played varsity tennis for three seasons.

PERSONAL

Full name is Taylor Victoria Church ... born May 31, 1990 ... daughter of Jamie and Jennifer Church ... has one brother, Davis ... majoring in general studies/business and technology.

**CHURCH'S CAREER STATISTICS**

	Evnts	Rds	Strks	Avg	1st	T-5	T-10	Low Rnd	Low 36	Low 54	Par/-Rnds
2008-09	10	25	2049	82.0	0	0	0	76	163	233	0
2009-10	9	21.5	1736	80.7	0	0	0	75	166	236	0
TOTALS	19	46.5	3785	81.4	0	0	0	75	163	233	0





Junior

Kara Fant

Belton, S.C. (T.L. Hanna High School)

AS A SOPHOMORE (2009-10)

Played in eight of the team's events ... posted a stroke average of 84.1 ... posted her best fall finish of 25th in the first event of the fall, the MSU/Marshall/EKU Tri Match ... tied for 13th with her best finish of the season in the ECU Lady Colonel Classic ... her lowest single-round score of the season came in the first round of the ECU Lady Colonel Classic (74) ... finished 34th in the 2010 OVC Championship ... earned a spot on the Ohio Valley Conference Commissioner's Honor Roll ... 2009-10 Presidential Honor Roll (4.0) ... 2009-10 Colonel Scholar ... Bratzke Award of Excellence (given to the team member with the highest GPA).

AS A FRESHMAN (2008-09)

Her 82.9 stroke average was the fourth best by a Colonel during the 2008-09 season ... posted one top-20 finish ... turned in her best fall finish, tied for 28th, at the final fall event, the Troy University Trojan Invitational ... opened the spring season by tying for 13th at the Murray State Spring Kick-Off ... fired a 78 in the second round of the LPGA International-Xavier Invitational, the first round of the Troy Invitational and the first round of the MSU Spring Kick-Off ... earned a spot on the Ohio Valley Conference Commissioner's Honor Roll ... 2008-09 Colonel Scholar.

HIGH SCHOOL

Two-time all-state and four-time all-region selection at T.L. Hanna High School in Anderson, S.C. ... finished first in the region and second in the state as a freshman ... posted back-to-back second place regional and third place state finishes as a sophomore and a junior ... finished her senior season with a 77.5 stroke average.


PERSONAL

Full name is Kara Elizabeth Fant ... born Oct. 22, 1990 ... daughter of Daniel and Ellen Fant ... has one brother, Kyle, and one sister, Julie ... her mother Ellen played collegiate basketball at Northeastern University ... her uncle Tom Soja played collegiate basketball at the University of Rochester ... majoring in physics.



FANT'S CAREER STATISTICS

	Evnts	Rds	Strks	Avg	1st	T-5	T-10	Low Rnd	Low 36	Low 54	Par/- Rnds
2008-09	9	24	1990	82.9	0	0	0	78	160	238	0
2009-10	8	19.5	1639	84.1	0	0	0	74	165	229	0
TOTALS	17	43.5	3629	83.4	0	0	0	74	160	229	0



Junior

Linda Hogberg

Abbebas, Sweden

AS A SOPHOMORE (2009-10)

Played in 10 of the team's 11 events ... finished the season ranked third on the team with a stroke average of 80.2 ... opened up the season with a fourth place finish in the MSU/Marshall/EKU Tri Match (78) ... fired a season-low 73 in the first round of the Drake Creek Fall Invitational to finish tied for seventh ... shot a career-best three-round score of 228 at the Drake Creek Invitational, which ties for the eighth best three-round score in program history ... posted three top-20 finishes on the season ... bested her 2009 OVC Championship performance and finished tied for 18th in the 2010 OVC Championship ... earned a spot on the Ohio Valley Conference Commissioner's Honor Roll ... 2009-10 Colonel Scholar.

AS A FRESHMAN (2008-09)

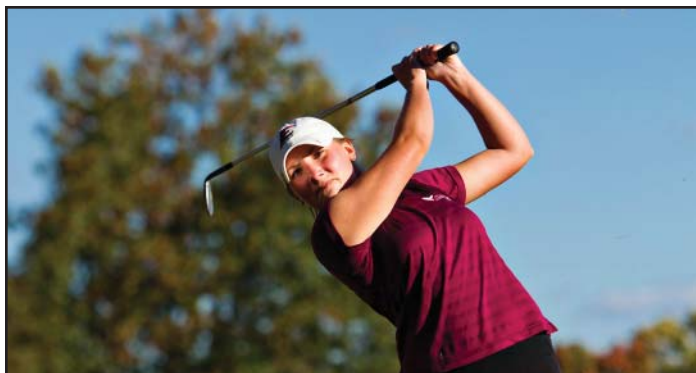
Earned a spot on the Ohio Valley Conference All-Newcomer team ... posted three top-20 finishes in her first collegiate season ... her 80.6 stroke average was the second best on the team ... nearly cracked the top-10 in her first collegiate event, finishing tied for 11th at the Chris Banister Gamecock Classic ... tied for 21st at the Ball State Cardinal Classic ... led the team with a 12th place finish at the Troy University Trojan Invitational ... her 72 in the second round of the Cardinal Classic was the lowest round by any Colonel all season and tied for what was then the third lowest round in program history ... her total of 229 at the Cardinal Classic was the lowest three-round score by any Colonel during the 2008-09 season and tied for the seventh lowest in program history ... contributed a top-20 finish in her first appearance at the OVC Championship, placing tied for 19th ... earned a spot on the Ohio Valley Conference Commissioner's Honor Roll ... 2008-09 Colonel Scholar.

HIGH SCHOOL

Attended ProCivitas Privata Gymnasium in Malmo, Sweden ... won three tournaments in Sweden and placed in the top 10 six times ... she carded rounds of 71 and 73 at two events.

PERSONAL

Full name is Linda Birgitta Hogberg ... born Dec. 14, 1989 ... daughter of Per Hogberg and Birgitta Bresky ... has one brother, Fredrik ... majoring in sports management.



HOGBERG'S CAREER STATISTICS

	Evnts	Rds	Strks	Avg	1st	T-5	T-10	Low Rnd	Low 36	Low 54	Par/- Rnds
2008-09	10	25	2014	80.4	0	0	0	72	155	229	1
2009-10	10	23.5	1884	80.2	0	1	2	73	155	228	0
TOTALS	20	48.5	3898	80.4	0	1	2	72	155	228	1



Junior

Lindsey Rankin

Stanford, Ky. (Lincoln County HS)

AS A SOPHOMORE (2009-10)

Appeared in five of the team's 11 events ... posted an 83.2 stroke average ... best finish was a tie for 16th at the MSU/Marshall/EKU Tri Match ... finished tied for 35th at the Drake Creek Fall Invitational ... lowest round of the season was a 76 in the second round of the Drake Creek Fall Invitational ... earned a spot on the Ohio Valley Conference Commissioner's Honor Roll ... 2009-10 Colonel Scholar.

AS A FRESHMAN (2008-09)

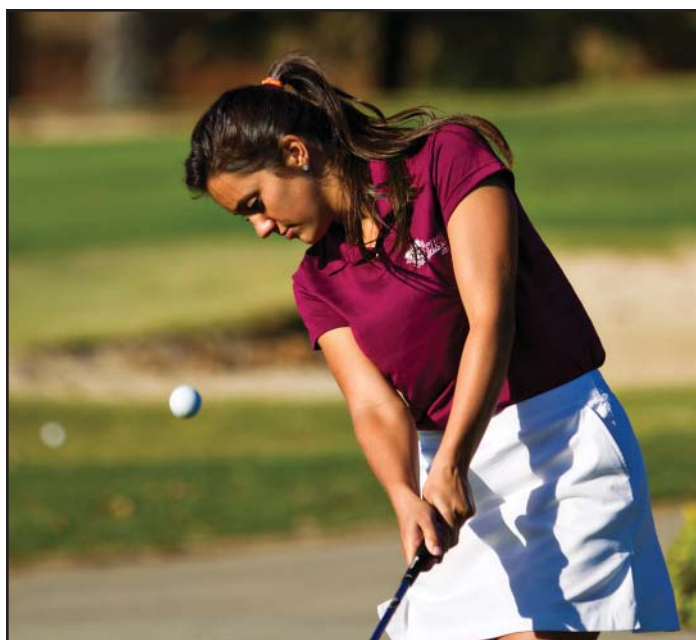
Appeared in eight of the team's 10 events ... posted an 87.2 stroke average ... best finish was a tie for 43rd at the Chris Banister Gamecock Classic ... also finished 43rd at the Murray State Spring Kick-Off ... best round was a 79 in the third round of her first collegiate event, the Gamecock Classic ... earned a spot on the Ohio Valley Conference Commissioner's Honor Roll ... 2008-09 Colonel Scholar ... 2008-09 Presidential Scholar (4.00 GPA) ... 2008-09 Bratzke Award of Excellence, which is given to the student-athlete with the highest GPA on his or her team.

HIGH SCHOOL

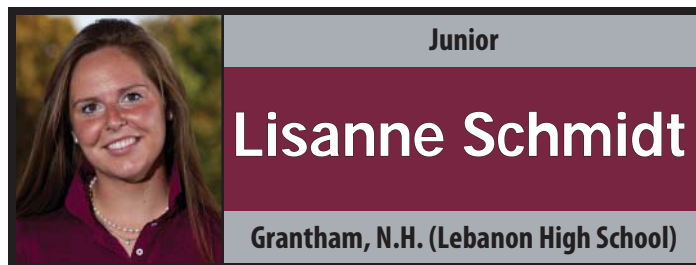
Four-time team MVP at Lincoln County High School ... qualified for the state tournament as a junior and a senior ... finished third in the region her senior season.

PERSONAL

Full name is Lindsey Anne Rankin ... born Oct. 20, 1989 ... daughter of Bob and Sue Rankin ... has one sister, Kristina ... majoring in middle school education.

**RANKIN'S CAREER STATISTICS**

	Evnts	Rds	Strks	Avg	1st	T-5	T-10	Low Rnd	Low 36	Low 54	Par/-Rnds
2008-09	8	20	1743	87.2	0	0	0	79	176	246	0
2009-10	5	13	1082	83.2	0	0	0	76	-	243	0
TOTALS	13	33	2825	85.6	0	0	0	76	176	243	0



Junior

Lisanne Schmidt

Grantham, N.H. (Lebanon High School)

AS A SOPHOMORE (2009-10)

Selected second team All-Ohio Valley Conference ... chosen to the OVC All-Newcomer Team ... finished second on the team and 11th in the OVC with a scoring average 78.7 ... played in eight of the team's 11 events ... posted four top-20 finishes on the season ... finished in the top-10 in her first event, the MSU/Marshall/EKU Tri Match ... fired a season-best single-round score of 70 in the third round of the Napa River Grill Cardinal Cup, which ties for both the second lowest round in the OVC during the 2009-10 season and the second lowest single-round score in program history ... her season-best three-round score of 228 at the Napa River Grill Cardinal Cup ranks tied for the eighth lowest three-round score in program history ... finished fourth in the Zippy Invitational with a three-round score of 231 ... 2009-10 Colonel Scholar.

AS A FRESHMAN (2007-08)

Redshirted as a member of the North Carolina State University women's golf team.

HIGH SCHOOL

Helped Lebanon High School capture the 2003 New Hampshire state team championship ... led the team to runner-up finishes at the state championship in 2004, 2005 and 2006 ... won the New Hampshire individual state championship in 2006 ... finished as the runner-up in 2004.

PERSONAL

Full name is Lisanne Schmidt ... born Nov. 28, 1988 ... daughter of Chris and Annemarie Schmidt ... has two sisters, Alex and Colette ... her father Chris played professional volleyball in the Netherlands for 15 years ... her sister Alex is a sophomore on the ECU women's golf team ... majoring in English.

**SCHMIDT'S CAREER STATISTICS**

	Evnts	Rds	Strks	Avg	1st	T-5	T-10	Low Rnd	Low 36	Low 54	Par/-Rnds
2009-10	8	20	1573	78.7	0	1	3	70	153	228	1
TOTALS	8	20	1573	78.7	0	1	3	70	153	228	1





Junior

Katie Wiedmar

Louisville, Ky. (Mercy Academy)

AS A SOPHOMORE (2009-10)

Played in all 11 of the team's events ... finished the season with an 81.3 stroke average ... tied for 16th in the first event of the season, the MSU/Marshall/EKU Tri Match ... tied for 28th at the Drake Creek Fall Invitational, shooting season-low round of 75 at the Drake Creek Fall Invitational ... finished 27th at the 2010 OVC Championship ... earned a spot on the Ohio Valley Conference Commissioner's Honor Roll ... 2009-10 Colonel Scholar.

AS A FRESHMAN (2008-09)

Played in eight events, twice as an individual ... finished the season with an 84.2 stroke average ... tied for 50th in her first collegiate appearance, at the Chris Banister Gamecock Classic ... tied for 23rd at the Murray State Spring Kick-Off, shooting a season-low 78 in the second round ... finished 21st at her first Ohio Valley Conference Championship ... earned a spot on the Ohio Valley Conference Commissioner's Honor Roll ... 2008-09 Colonel Scholar ... 2008-09 Presidential Scholar (4.00 GPA) ... 2008-09 Bratzke Award of Excellence, which is given to the student-athlete with the highest GPA on his or her team.

HIGH SCHOOL

Three-time all-county selection at Mercy Academy in Louisville ... played at the No. 1 position on the team for four years ... qualified for the state tournament three times ... in 2007 she placed 22nd out of 150 participants at the state tournament ... finished fourth, fifth and second in the regional tournament as a sophomore, junior and senior ... finished fourth twice and second once at the Jefferson County Invitational ... was also a member of the Mercy Academy basketball, field hockey, softball and tennis teams ... was offered a basketball scholarship by Morehead State.


PERSONAL

Full name is Kathleen Marie Wiedmar ... born Feb. 5, 1990 ... daughter of Frank and Peggy Wiedmar ... has one brother, Chris ... one of her uncles played football at Centre College and another uncle played baseball at Lewis and Clark University ... majoring in marketing with a concentration in professional golf management.



WIEDMAR'S CAREER STATISTICS

	Evnts	Rds	Strks	Avg	1st	T-5	T-10	Low Rnd	Low 36	Low 54	Parl-Rnds
2008-09	8	21	1768	84.2	0	0	0	74	173	243	0
2009-10	11	26.5	2155	81.3	0	0	0	75	155	238	0
TOTALS	19	47.5	3923	82.6	0	0	0	74	155	238	0



Sophomore

April Emerson

Jamestown, Ky. (Russell County HS)

AS A FRESHMAN (2009-10)

Named to the Ohio Valley Conference All-Tournament team ... selected to the OVC All-Newcomer Team ... played in all 11 events during her first collegiate season ... posted the team's best scoring average of the season and ranked tenth in the OVC (78.6) ... placed in the top-10 in her first collegiate start in the MSU/Marshall/EKU Tri Match ... tallied eight top-20 finishes on the season ... fired a 36-hole score of 149 at the 2009 Pinehurst Challenge, tied for third lowest 36-hole score in program history ... tied for 10th in the EKU Lady Colonel Classic where her score of 228 ties for the eight lowest round in program history ... tied for second in the 2010 OVC Championship (185) ... posted an OVC Championship record 69 in the second round of the OVC Championship ... her performance in the second round of the OVC Championship is also the lowest 18-hole score in program history.

HIGH SCHOOL

Graduated first in the Russell County High School Class of 2009 and earned all-state honors in 2006, 2007 and 2008 ... was selected by the Kentucky High School Coaches Association (KHSCA) as the Senior Girls Golfer of the Year in 2008 ... posted a 74.7 stroke average her senior season and captured the ninth region individual championship ... placed fifth at the KHSAA State Championship as a senior ... was also selected as the 2008 KGA-PGA Player of the Year and won the 2008 Jace Bugg Award ... finished as the region runner-up four times (2004-2007) and helped RCHS capture the state championship in 2003 and 2004 ... placed ninth at the state championship as a junior ... in the summer of 2007, Emerson earned the Musselman Dunne Tour Player of the Year award in the championship division ... was a member of the National Honor Society and was selected for the KHSCA's Outstanding Senior Award ... during the summer of 2009, captured the title at the Kentucky Women's State Amateur and won her age group at the KGA-PGA Junior Amateur Championship, finishing second overall ... also received scholarship offers to play golf at Murray State, Morehead State and Western Kentucky.

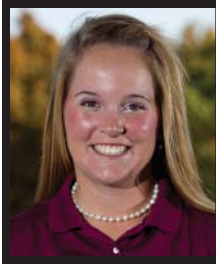
PERSONAL

Full name is April Leanne Emerson ... born May 27, 1991 ... daughter of Mike and Teresa Emerson ... plans to major in mathematics/secondary education.



EMERSON'S CAREER STATISTICS

	Evnts	Rds	Strks	Avg	1st	T-5	T-10	Low Rnd	Low 36	Low 54	Parl-Rnds
2009-10	11	26.5	2082	78.6	0	1	3	69	149	228	1
TOTALS	11	26.5	2082	78.6	0	1	3	69	149	228	1



Sophomore

Alex Schmidt

Grantham, N.H. (Lebanon High School)

AS A REDSHIRT FRESHMAN (2009-10)

Played in five of the team's 11 events ... finished the season with an 81.8 stroke average ... tied for 16th in the first event of the season, the MSU/Marshall/EKU Tri Match ... posted lowest single round score of the season, 76, in the second round of the Cincinnati Fall Invitational.

AS A FRESHMAN (2008-09)

Made three appearances during her first collegiate season ... received a medical redshirt after missing the remainder of the season with an injury ... finished the season with an 84.2 stroke average ... tied for 41st at her first collegiate event, the Chris Banister Gamecock Classic.

HIGH SCHOOL

After winning the state team title as a freshman, she helped Lebanon High School to three straight runner-up finishes ... in 2007, Schmidt became the first female captain of the Lebanon High School golf team and posted the team's lowest stroke average ... she finished fifth once and fourth three times at the state high school championship, and was invited to the New England High School Championship four times ... she won the Laconia Invitational in 2005 and 2007 and finished in the top-25 at the state amateur in 2007 ... also a member of the LHS downhill and cross country skiing teams.

PERSONAL

Full name is Alexandra Maria Schmidt ... born May 20, 1990 ... daughter of Chris and Annemarie Schmidt ... has two sisters, Lisanne and Colette ... her father Chris played professional volleyball in the Netherlands for 15 years ... her sister Lisanne joined the ECU program in 2009 ... majoring in business.

**SCHMIDT'S CAREER STATISTICS**

	Evnts	Rds	Strks	Avg	1st	T-5	T-10	Low Rnd	Low 36	Low 54	Par/- Rnds
2008-09	3	6	505	84.2	0	0	0	81	176	245	0
2009-10	5	13	1064	81.8	0	0	0	76	-	241	0
TOTALS	8	19	1569	82.6	0	0	0	76	176	241	0



Freshman

Katy Humphrey

Paintsville, Ky. (Paintsville High School)

HIGH SCHOOL

Attended Paintsville High School ... won the 2009 region championship and placed sixth in the state tournament ... during the summer of 2009, she won all four events on the Eastern Kentucky Junior golf tour and won three tournaments on the Pepsi tour ... was chosen to represent the state in the Kentucky/Indiana Junior Golf Challenge Cup ... captured the Class A region title four years in a row and qualified for the state tournament five straight years.

PERSONAL

Full name is Katy Alexandra Humphrey ... born Oct. 30, 1991 ... daughter of Eric and Edris Humphrey ... plans to study criminal justice.





2009-10 Individual Statistics

Player	Rounds	Strokes	Low 36-holes	Low 54-holes	Low Round	Par/-	# Evnts	Finish	Top 10	Average	Career Rounds	Career Strokes	LowRnd	Avg
April Emerson	26.5	2082	228	149	69	1	11	- 1	3	78.6	26.5	2082	69	78.6
Lisanne Schmidt	20	1573	228	153	70	1	8	- 1	3	78.7	20	1573	70	78.7
Linda Hogberg	23.5	1884	228	155	73	-	10	- 1	2	80.2	48.5	3898	72	80.4
Taylor Church	21.5	1736	236	161	75	-	9	- -	-	80.7	46.5	3785	75	81.4
Katie Wiedmar	26.5	2155	238	155	75	-	11	- -	-	81.3	47.5	3923	74	82.6
Gabrielle Andersson	20	1628	225	156	74	-	8	- 1	1	81.4	72	5770	73	80.1
Alex Schmidt	13	1064	241	-	76	-	5	- -	-	81.8	19	1569	76	82.6
Lindsey Rankin	13	1082	243	-	76	-	5	- -	-	83.2	33	2825	76	85.6
Kara Fant	19.5	1639	229	165	74	-	8	- -	-	84.1	43.5	3629	74	83.4
4-Player Team	26.5	8382	916	609	299	2	11	- 4	9	316.3				

2009-10 Team Low Rounds

Low Rnd	Event
1. 299	Drake Creek Fall Invitational, Sept. 14-15, 2009 (1st round)
2. 301	Ohio Valley Conference Championship, April 22-24, 2010 (2nd round)
3. 304	2009 Pinehurst Challenge, Nov. 2-3, 2009 (1st round)
4. 305	Drake Creek Fall Invitational, Sept. 14-15, 2009 (2nd round)
305	2009 Pinehurst Challenge, Nov. 2-3, 2009 (2nd round)
6. 308	Napa River Grill Cardinal Cup, Sept. 21-22, 2009 (3rd round)
308	Lady Colonel Classic, April 10-11, 2010 (1st round)
308	Lady Colonel Classic, April 10-11, 2010 (2nd round)
9. 312	3 times

2009-10 Individual Low Rounds

Low Rnd	Player	Event
1. 69	April Emerson	Ohio Valley Conference Championship, April 22-24, 2010 (2nd round)
2. 70	Lisanne Schmidt	Napa River Grill Cardinal Cup, Sept. 21-22, 2009 (3rd round)
3. 73	Linda Hogberg	Drake Creek Fall Invitational, Sept. 14-15, 2009 (1st round)
4. 74	Gabrielle Andersson	Drake Creek Fall Invitational, Sept. 14-15, 2009 (1st round)
74	Lisanne Schmidt	Drake Creek Fall Invitational, Sept. 14-15, 2009 (1st round)
74	Lisanne Schmidt	2nd Annual Zippy Invitational, Oct. 5-6, 2009 (2nd round)
74	April Emerson	2009 Pinehurst Challenge, Nov. 2-3, 2009 (1st round)
74	Lisanne Schmidt	2009 Pinehurst Challenge, Nov. 2-3, 2009 (2nd round)
74	April Emerson	C&F Bank Intercollegiate, March 20-21, 2010 (2nd round)
74	April Emerson	Lady Colonel Classic, April 10-11, 2010 (1st round)
74	Kara Fant	Lady Colonel Classic, April 10-11, 2010 (1st round)
12. 75	Katie Wiedmar	Drake Creek Fall Invitational, Sept. 14-15, 2009 (1st round)
75	Gabrielle Andersson	Drake Creek Fall Invitational, Sept. 14-15, 2009 (3rd round)
75	Taylor Church	Drake Creek Fall Invitational, Sept. 14-15, 2009 (3rd round)
75	April Emerson	2009 Pinehurst Challenge, Nov. 2-3, 2009 (2nd round)
75	Kara Fant	Lady Colonel Classic, April 10-11, 2010 (2nd round)
75	Linda Hogberg	Lady Colonel Classic, April 10-11, 2010 (2nd round)



Tournament	Dates	Rounds	Place	Teams	Players	+/-	Score	W-L
Morehead State/Marshall/EKU Tri Match	August 30, 2009	1	3	3	25	+36	324	0-2
Drake Creek Fall Invitational	Sept. 14-15, 2009	3	2	9	58	+52	916	7-1
Napa River Grill Cardinal Cup	Sept. 21-22, 2009	3	11	12	73	+77	941	1-10
Cincinnati Fall Invitational	Sept. 28-29, 2009	3	10	14	79	+114	978	4-9
2nd Annual Zippy Invitational	Oct. 5-6, 2009	3	4	15	92	+99	963	11-3
F&M Bank APSU Intercollegiate	Oct. 19-20, 2009	2	7	17	90	+77	653	10-6
2009 Pinehurst Challenge	Nov. 2-3, 2009	2	5	15	79	+33	609	10-4
C&F Bank Intercollegiate	March 20-21, 2010	2	6	21	112	+61	637	15-5
Saluki Invitational	March 28-29, 2010	2	8	15	93	+76	652	7-7
Lady Colonel Classic	April 10-11, 2010	3	6	17	100	+67	931	11-5
Ohio Valley Conference Championship	April 22-24, 2010	2.5	5	8	40	-86	778	3-4


1993-94

Date	Tournament	Teams	Finish
9/11	Dayton Invitational	6	3rd
9/18-19	Tech/Vanderbilt Classic	15	13th
10/7	EKU Fall Invitational	4	2nd
10/9-10	Lady Falcon Invitational	6	5th
10/15	DePauw Invitational	8	3rd
11/1-2	Mercer Invitational	7	5th
11/15-16	Lady Panther Invitational	15	11th
3/16	Appalachian State Invitational	3	3rd
3/20-21	William & Mary Invitational	10	10th
3/28-29	Fighting Camel Classic	10	10th
4/1-2	EKU Lady Colonel Classic	12	5th
4/9-10	Lady Topper Invitational	14	9th
4/15-16	Murray State Invitational	7	5th
4/25-26	OVC Championship	3	2nd

1994-95

Date	Tournament	Teams	Finish
9/9	Dayton Invitational	7	2nd
9/17-18	Tech/Vanderbilt Classic	18	9th
10/7-9	Lady Kat Invitational	20	18th
10/13	<i>Franklin College Invitational</i>	11	1st
11/14-15	Mercer Invitational	7	5th
3/19-20	Southern Mississippi Invitational	18	T12th
3/27-28	Charleston Southern Invitational	7	3rd
4/1-2	EKU Lady Colonel Classic	11	5th
4/8-9	Lady Topper Invitational	4	2nd
4/15-16	Murray State Invitational	8	3rd
4/22-23	OVC Championship	3	2nd

1995-96

Date	Tournament	Teams	Finish
9/9	Dayton Flyer Invitational	6	3rd
9/17-18	Tech/Vanderbilt Classic	9	2nd
10/6-8	Lady Kat Invitational	17	17th
10/13	EKU Fall Invitational	4	2nd
10/22-24	Lady Racer/Hilltopper Invitational	13	6th
3/8-10	Fripp Island Invitational	24	24th
3/16-17	William & Mary Invitational	13	7th
3/25	Saluki Invitational	14	10th
4/6-7	EKU Lady Colonel Classic	14	3rd
4/13-14	Purdue Invitational	15	3rd
4/19-21	<i>OVC Championship</i>	3	1st

1996-97

Date	Tournament	Teams	Finish
9/5	<i>Dayton Flyer Invitational</i>	15	1st
9/14-15	<i>Tennessee Tech Classic</i>	10	1st
9/21-22	Lady Falcon Invitational	15	2nd
10/11-13	Lady Kat Invitational	18	9th
3/3-4	College of Charleston Invitational	14	11th
3/15-16	William & Mary Invitational	12	4th
3/23-24	Saluki Invitational	10	T5th
4/5-6	EKU Invitational	13	3rd
4/12-13	<i>EKU Lady Colonel Classic</i>	8	1st
4/19-21	OVC Championship	4	2nd

1997-98

Date	Tournament	Teams	Finish
9/15-16	Tennessee Tech	13	4th
9/20-21	Lady Falcon Invitational	15	T4th
9/28-29	Lady Racer/Hilltopper Classic	12	6th
10/10-12	Lady Kat Invitational	18	18th
10/24-25	EKU Fall Invitational	6	2nd
3/2-3	College of Charleston Invitational	23	16th
3/23-24	Jacksonville State Invitational	15	9th
3/29-30	Saluki Invitational	15	8th
4/4-5	EKU Lady Colonel Classic	14	7th
4/17-19	OVC Championship	4	2nd

1998-99

Date	Tournament	Teams	Finish
9/14-15	Tennessee Tech Classic	12	T2nd
9/21-22	Lady Draper Invitational	15	8th
9/27-28	Lady Racer Classic	14	6th
10/5-6	Western Carolina Invitational	18	2nd
10/16-17	EKU Fall Invitational	8	4th
10/24-25	James Madison Invitational	16	7th
3/5-7	Fripp Island Invitational	15	9th
3/13-14	Elon Invitational	14	5th
3/22-23	Jacksonville State Invitational	14	6th
3/28-29	Saluki Invitational	13	7th

4/3-4	EKU Lady Colonel Classic	17	4th
4/16-18	OVC Championship	5	3rd

1999-00

Date	Tournament	Teams	Finish
9/11-12	Redbird Classic	18	3rd
9/20-21	Lady Draper Invitational	12	9th
10/11-12	APSU Intercollegiate	8	5th
10/15-16	EKU Fall Invitational	12	T4th
10/20-21	Lady Catamount Intercollegiate	20	7th
3/3-4	Lady Blazer Invitational	15	12th
3/11-12	Elon Invitational	15	4th
3/16-17	NIU Snowbird Classic	19	9th
3/26-27	Saluki Invitational	16	T5th
4/3-4	Fighting Camel Classic	11	8th
4/14-15	EKU Lady Colonel Classic	17	7th
4/28-30	OVC Championship	5	4th

2000-01

Date	Tournament	Teams	Finish
9/11-12	Lady Eagle Classic	14	2nd
9/18-19	Lady Draper Invitational	18	3rd
10/2-3	<i>Lady Racer Classic</i>	11	1st
10/13-14	<i>EKU Fall Invitational</i>	9	1st
10/23-24	Great Smokies Collegiate	24	10th
3/4-6	East Carolina Invitational	21	12th
3/13-14	North/South Intercollegiate	16	2nd
3/15-16	NIU Snowbird Classic	16	10th
4/2-3	Fighting Camel Classic	10	7th
4/7-8	JMU Lady Duke Invitational	16	6th
4/12-14	EKU Lady Colonel Classic	15	4th
4/28-30	OVC Championship	5	4th

2001-02

Date	Tournament	Teams	Finish
9/7-9	Baytree Classic	30	28th
9/17-18	Lady Highlander Invitational	12	8th
10/1-2	Lady Razorback Invitational	15	13th
10/11-12	EKU Fall Invitational	15	7th
10/22-23	Great Smokies Collegiate	24	13th
3/1-3	Lady Moc Classic	18	14th
3/11-12	Bradford Creek Spring Invitational	16	9th
3/18-19	Chris Banister Golf Classic	13	11th
4/1-2	Fighting Camel Classic	8	6th
4/11-13	EKU Lady Colonel Classic	15	5th
4/27-5/1	OVC Championship	5	4th

2002-03

Date	Tournament	Teams	Finish
9/4-8	Baytree Classic	35	20th
9/16-17	Lady Eagle Classic	12	6th
9/22-24	UofL Invitational	14	12th
10/11-12	EKU Fall Invitational	14	4th
10/20-22	Great Smokie Intercollegiate	24	9th
10/30-11/3	Pat Bradley Invitational	9	9th
2/28-3/2	Lady Moc Classic	20	16th
3/9-11	Lady Racer Classic	6	3rd
3/16-18	Gamecock Classic	13	8th
4/10-12	EKU Lady Colonel Classic	14	5th
4/26-30	OVC Championship	6	4th

2003-04

Date	Tournament	Teams	Finish
9/5-7	Baytree Classic	36	25th
9/19-21	UofL Invitational	11	6th
10/2-5	UK Wildcat Invitational	18	16th
10/10-11	EKU Fall Invitational	15	3rd
10/20-21	Great Smokies Intercollegiate	24	6th
10/29-11/2	Pat Bradley Invitational	13	11th
3/15-16	El Diablo Intercollegiate	13	11th
3/28-29	Saluki Invitational	17	9th
4/5-6	Big River Classic	12	4th
4/15-17	Lady Colonel Classic	15	3rd
4/24-26	OVC Championship	8	4th

2004-05

Date	Tournament	Teams	Finish
9/11-12	Ball State Cardinal Classic	17	3rd
9/20-21	Louisville Cardinal Cup	12	9th
9/24-25	<i>EKU Fall Invitational</i>	10	1st
10/1-10/3	Wildcat Fall Invitational	11	10th
10/9-10	Pat Bradley Invitational	16	12th

10/18	Great Smokies Intercollegiate	22	9th
3/11-13	Saint Croix Invitational	8	7th
3/21	Samford Intercollegiate	17	9th
3/27-28	Saluki Invitational	14	4th
4/7-9	Lady Colonel Classic	5	2nd
4/18-20	OVC Championship	8	2nd

2005-06

Date	Tournament	Teams	Finish
9/12-13	Lady Herd Invitational	8	2nd
9/19-20	Napa River Grill Cardinal Cup	13	12th
9/23-24	EKU Colonel Classic	7	2nd
10/1-2	Wildcat Fall Invitational	15	13th
10/23-24	APSU Intercollegiate	17	4th
10/31	UD Fall Invitational	10	4th
2/14-15	Baja Invitational	7	5th
3/6-7	Murray Racer Classic	11	2nd
3/15-16	NIU Snowbird Intercollegiate	15	4th
3/20-21	Lady Herd Intercollegiate	14	8th
3/26-27	Saluki Invitational	13	2nd
4/6-8	EKU Spring Invitational	14	3rd
4/17-19	OVC Championship	8	2nd

2006-07

Date	Tournament	Teams	Finish
9/9-10	Ball State Cardinal Classic	18	T13th
9/18-19	UL Cardinal Cup	14	10th
9/30-10/1	UK Wildcat Fall Invitational	15	15th
10/6-7	<i>EKU Colonel Classic</i>	5	1st
10/16-17	Cincinnati Fall Classic	13	T5th
2/11-12	SMU/NIU Baja Invitational	13	7th
2/25-26	BSU Ann Rhoads Invitational	21	12th
3/14-15	NIU Snowbird Intercollegiate	8	6th
3/19-20	Samford's Women's Intercollegiate	14	2nd
3/26-27	Lady Seahawk Invitational	15	12th
4/6-7	EKU Spring Invitational	12	T4th
4/16-18	OVC Championship	8	4th

2007-08

Date	Tournament	Teams	Finish
9/7-9	Chris Banister Gamecock Classic	9	3rd
9/17-18	Napa River Grill Cardinal Cup	17	15th
9/24-25	ULM Fred Marx Invitational	16	9th
10/8-9	2007 Lady Indian Classic	17	2nd
10/22-23	F&M Bank APSU Intercollegiate	14	11th
11/5-6	UAB Fall Beach Blast	14	10th
3/3-4	NewWave Communications Racer Classic	7	2nd
3/13-14	EKU El Diablo Intercollegiate	10	3rd
3/22-23	First Market Bank Intercollegiate	20	8th
3/30-31	Saluki Invitational	12	10th
4/4-5	EKU Spring Invitational	7	T4th
4/14-16	OVC Championship	8	3rd

2008-09

Date	Tournament	Teams	Finish
9/5-7	Chris Banister Gamecock Classic	10	6th
9/13-14	Wolverine Invitational	13	9th
9/22-23	Cardinal Classic	13	8th
10/10-12	LPGA International-Xavier Invitational	15	12th
10/27-28	Troy University Women's Invitational	13	7th
2/22-24	Morehead State Spring Kickoff	8	5th
3/12-13	EKU El Diablo Intercollegiate	15	11th
3/21-22	First Market Bank Intercollegiate	22	15th
4/11-12	EKU Spring Invitational	18	13th
4/23-25	OVC Championship	8	7th

2009-10

Date	Tournament	Teams	Finish	Score
8/30	Morehead State/Marshall/EKU	3	3rd	324
9/14-15	Drake Creek Fall Invitational	9	2nd	916
9/21-22	Napa River Grill Cardinal Cup	12	11th	941
9/28-29	Cincinnati Fall Invitational	14	10th	978
10/5-6	2nd Annual Zippy Invitational	15	4th	963
10/19-20	F&M Bank Austin Peay Inter.	17	7th	653
11/2-3	2009 Pinehurst Challenge	15	5th	609
3/20-21	C&F Bank Intercollegiate	21	T-6th	637
3/28-29	Saluki Invitational	15	8th	652
4/10-11	Lady Colonel Classic	17	6th	931
4/22-24	OVC Championship	8	5th	778



Ohio Valley Conference Champions		2008 Kelli Warner, 1st Team
1996		2009 Gabrielle Andersson, 2nd Team
		2010 Lisanne Schmidt, 2nd Team
Ohio Valley Conference Medalist (4)		Ohio Valley Conference All-Tournament (6)
1994 Beverly Brockman		2001 Kelli Wilson
1996 Beverly Brockman		2005 Brittany Klein (MVP) Kelli Warner
1997 Beverly Brockman		
2005 Brittany Klein		
Ohio Valley Conference Runner-Up (5)		2006 Kelli Warner
1996 Julie Bourne		2009 Gabrielle Andersson
1997 Jaclyn Biro		2010 April Emerson
2005 Kelli Warner		
2006 Kelli Warner		
2010 April Emerson		
Ohio Valley Conference Player of the Year (3)		Ohio Valley Conference All-Newcomer (3)
1994 Beverly Brockman		2009 Linda Hogberg
1996 Beverly Brockman		2010 April Emerson Lisanne Schmidt
1997 Beverly Brockman		
Ohio Valley Conference Coach of the Year (3)		Ohio Valley Conference Academic Medal of Honor
1995 Sandy Martin		1997-98 Heather Faesy
1996 Sandy Martin		2001-02 Bethany VanHoose
2005 Joni Stephens		2002-03 Bethany VanHoose
		2004-05 Rachel Montgomery Aubree Moore
		Bethany VanHoose
		2005-06 Aubree Moore
All-Ohio Valley Conference (16)		Ohio Valley Conference Team Academic Achievement Award
1994 Beverly Brockman		2004-05
1996 Beverly Brockman Julie Bourne		
1997 Beverly Brockman Jaclyn Biro		
1998 Jaclyn Biro		
2000 Michelle Biro		Academic All-District
2001 Colleen Yeager		2006-07 Aubree Moore, 2nd Team
2003 Leah Larkin		NGCA All-Scholar Team
2005 Brittany Klein, 1st Team Leah Larkin, 2nd Team		2001-02 Tamara Thompson
		2002-03 Tamara Thompson
2006 Leslie Booth, 1st Team Kelli Warner, 1st Team		Highest ECU Team GPA
		1998-99
		2001-02
		2003-04

TOP FINISHES - TEAM

1st	Franklin College Invitational	1994-95	336
1st	OVC Championships	1995-96	966
1st	Lady Flyer Invitational	1996-97	318
1st	Tennessee Tech Classic	1996-97	645
1st	ECU Lady Colonel Classic	1996-97	613
1st	Lady Racer Classic	2000-01	621
1st	ECU Fall Invitational	2000-01	610
1st	ECU Fall Invitational	2004-05	930
1st	ECU Colonel Classic	2006-07	960
2nd	ECU Invitational	1993-94	347
2nd	OVC Championships	1993-94	682
2nd	Dayton Invitational	1994-95	352
2nd	Lady Topper Invitational	1994-95	331
2nd	OVC Championships	1994-95	332
2nd	Tech/Vanderbilt Classic	1995-96	648
2nd	ECU Fall Invitational	1995-96	325
2nd	Lady Falcon Invitational	1996-97	638
2nd	OVC Championships	1996-97	975
2nd	ECU Fall Invitational	1997-98	665
2nd	OVC Championships	1997-98	966
2nd	Lady Catamount Invitational	1998-99	316
2nd	Tennessee Tech Classic	2000-01	630
2nd	North/South Intercollegiate	2000-01	634
2nd	ECU Fall Invitational	2003-04	617
2nd	ECU Fall Invitational	2004-05	930
2nd	ECU Lady Colonel Classic	2004-05	945
2nd	OVC Championship	2004-50	958
2nd	Lady Herd Invitational	2005-06	944
2nd	ECU Colonel Classic	2005-06	949
2nd	MSU Big River Classic	2005-06	651
2nd	Saluki Invitational	2005-06	624
2nd	OVC Championships	2005-06	920
2nd	Samford Intercollegiate	2006-07	916
2nd	2007 Lady Indian Classic	2007-08	620
2nd	NewWave Racer Classic	2007-08	328
2nd	Drake Creek Fall Invitational	2009-10	916
T-2nd	Tennessee Tech Classic	1998-99	632
3rd	ECU Lady Colonel Classic	2003-04	945
3rd	Ball State Cardinal Classic	2004-05	618
3rd	Chris Banister Gamecock Classic	2007-08	932
3rd	ECU El Diablo Intercollegiate	2007-08	969
3rd	OVC Championship	2007-08	957
3rd	Morehead State/Marshall/ECU	2009-10	324



LOW SCORES - TEAM

SINGLE ROUND

299	Drake Creek Fall Invitational	2009-10	624	Great Smokies Collegiate	2002-03
300	EKU Fall Invitational	2000-01	624	Saluki Invitational	2005-06
300	Samford Intercollegiate	2006-07	625	ULM Fred Marx Invitational	2007-08
301	Lady Highlander Invitational	2000-01	626	Chris Banister Gamecock Classic	2007-08
301	OVC Championship	2009-10	627	Lady Dukes Invitational	2000-01
303	EKU Lady Colonel Classic	2002-03	627	Cardinal Classic	2008-09
303	Samford Intercollegiate	2006-07	628	NIU Snowbird Intercollegiate	2005-06
303	2007 Lady Indian Classic	2007-08	628	Napa River Grill Cardinal Cup	2007-08
304	EKU Lady Colonel Classic	2002-03	628	Chris Banister Gamecock Classic	2008-09
304	2009 Pinehurst Challenge	2009-10	629	Great Smokies Collegiate	2000-01
305	Lady Racer Classic	2000-01	629	Lady Herd Invitational	2005-06
305	Drake Creek Fall Invitational	2009-10	630	Tennessee Tech Classic	2000-01
305	2009 Pinehurst Challenge	2009-10	631	EKU Lady Colonel Classic	2004-05
306	EKU Lady Colonel Classic	2000-01	631	Napa River Grill Cardinal Cup	2006-07
306	Ball State Cardinal Classic	2004-05	632	Tennessee Tech Classic	1998-99
306	Chris Banister Gamecock Classic	2007-08	632	Lady Highlander Invitational	2001-02
307	Great Smokies Intercollegiate	2003-04	634	North/South Collegiate	2000-01
308	EKU Fall Invitational	2002-03	634	Saluki Invitational	2007-08
308	EKU Lady Colonel Classic	2003-04	634	LPGA International-Xavier Invit.	2008-09
308	Napa River Grill Cardinal Cup	2007-08	635	Lady Highlander Invitational	1998-99
308	Napa River Grill Cardinal Cup	2009-10	635	North/South Collegiate	1998-99
308	Lady Colonel Classic	2009-10	636	Lady Race Classic	1998-99
308	Lady Colonel Classic	2009-10	636	EKU Colonel Classic	2005-06
309	EKU Fall Invitational	2004-05	636	EKU Spring Invitational	2007-08
309	Great Smokies Intercollegiate	2004-05	636	Troy University Invitational	2008-09
309	Lady Falcon Invitational	1996-97	637	OVC Championship	2004-05
309	EKU Lady Colonel Classic	2004-05	637	C&F Bank Intercollegiate	2009-10
309	ULM Fred Marx Invitational	2007-08			
309	OVC Championship	2007-08			
310	EKU Lady Colonel Classic	1996-97			
310	EKU Fall Invitational	2000-01			
310	EKU Fall Invitational	2004-05			
310	Chris Banister Gamecock Classic	2007-08			
310	Cardinal Classic	2008-09			
311	Lady Highlander Invitational	1998-99			
311	Lady Dukes Invitational	2000-01			
311	Great Smokies Collegiate	2003-04			
311	EKU Fall Invitational	2004-05			
311	OVC Championships	2006-07			

36 HOLE TOURNAMENT

609	2009 Pinehurst Challenge	2009-10
610	EKU Fall Invitational	2000-01
613	EKU Lady Colonel Classic	1996-97
615	Lady Highlander Invitational	2000-01
616	Samford Intercollegiate	2006-07
617	EKU Fall Invitational	2003-04
618	Great Smokies Collegiate	2003-04
618	Ball State Cardinal Classic	2004-05
620	2007 Lady Indian Classic	2007-08
621	Lady Racer Classic	2000-01
622	EKU Fall Invitational	2002-03

54 HOLE TOURNAMENT

916	Samford Intercollegiate	2006-07
916	Drake Creek Fall Invitational	2009-10
920	OVC Championship	2005-06
930	EKU Fall Invitational	2004-05
931	Lady Colonel Classic	2009-10
932	Chris Banister Gamecock Classic	2007-08
936	Napa River Grill Cardinal Cup	2007-08
941	Napa River Grill Cardinal Cup	2009-10
943	Chris Banister Gamecock Classic	2008-09
944	Lady Herd Invitational	2005-06
945	EKU Lady Colonel Classic	2003-04
945	EKU Lady Colonel Classic	2004-05
945	UL Cardinal Cup	2006-07
949	EKU Colonel Classic	2005-06
950	ULM Fred Marx Invitational	2007-08
952	Wildcat Fall Invitational	2005-06
953	EKU Lady Colonel Classic	2000-01
954	EKU Lady Colonel Classic	2002-03
957	OVC Championship	2007-08

TOP FINISHES - INDIVIDUAL

1993-94

1st	Beverly Brockman	76	EKU Fall Invitational
1st	Beverly Brockman	159	OVC Championships

1994-95

1st	Beverly Brockman	79	Franklin College Invite
1st	Crystal Canada	158	Mercer Invitational
3rd	Beverly Brockman	162	Lady Colonel Classic
4th	Crystal Canada	83	Franklin College Invite

1995-96

1st	Beverly Brockman	229	OVC Championships
2nd	Julie Bourne	237	OVC Championships
2nd	Julie Bourne	78	EKU Fall Invitational
T2nd	Beverly Brockman	157	Tech/Vanderbilt Classic
5th	Julie Bourne	163	Purdue Invitational

1996-97

1st	Beverly Brockman	150	Saluki Invitational
1st	Beverly Brockman	152	EKU Invitational
1st	Beverly Brockman	145	EKU Lady Colonel Classic
1st	Beverly Brockman	232	OVC Championships
1st	Erica Montgomery	74	Dayton Invitational
2nd	Jackie Biro	236	OVC Championships
2nd	Erica Montgomery	156	Tennessee Tech Classic
3rd	Beverly Brockman	155	Lady Falcon Classic
4th	Erica Montgomery	150	EKU Lady Colonel Classic

1997-98

1st	Jackie Biro	155	EKU Fall Invitational
3rd	Jackie Biro	232	OVC Championships
T3rd	Jackie Biro	158	Racer/Hilltopper Classic

1998-99

3rd	Michelle Biro	152	Elon Invitational
T3rd	Julie Bourne	75	Lady Catamount Invitational
T3rd	Krissie Kirby	152	Tennessee Tech Classic
4th	Jackie Biro	156	Saluki Invitational
T4th	Michelle Biro	156	Saluki Invitational
T5th	Michelle Biro	160	JSU Gamecock Classic

1999-00

T2nd	Jackie Biro	152	Saluki Invitational
3rd	Jackie Biro	238	OVC Championship
T3rd	Jackie Biro	154	Elon Invitational
T3rd	Colleen Yeager	78	Redbird Classic
T4th	Krissie Kirby	155	EKU Lady Colonel Classic
T5th	Krissie Kirby	158	EKU Fall Invitational



2000-01

1st	Colleen Yeager	149	North/South Intercollegiate
2nd	Colleen Yeager	151	Lady Racer Classic
T3rd	Kelli Wilson	153	Lady Racer Classic
T4th	Colleen Yeager	230	EKU Lady Colonel Classic
5th	Krissie Kirby	154	Lady Racer Classic
5th	Kelli Wilson	231	OVC Championships
T5th	Jackie Biro	156	Tennessee Tech Classic
T5th	Colleen Yeager	156	Tennessee Tech Classic
4th	Colleen Yeager	231	EKU Lady Colonel Classic
5th	Kelli Wilson	231	OVC Championships

2001-02

4th	Tamara Thompson	231	EKU Lady Colonel Classic
-----	-----------------	-----	--------------------------

2002-03

T5th	Jennifer Sullivan	235	EKU Lady Colonel Classic
------	-------------------	-----	--------------------------

2003-04

No Top Five Finishes

2004-05

1st	Brittany Klein	223	Lady Colonel Classic
1st	Brittany Klein	231	OVC Championship
2nd	Kelli Warner	232	OVC Championship
T4th	Brittany Klein	230	EKU Fall Invitational
T5th	Leah Larkin	157	Saluki Invitational

2005-06

2nd	Shellie Stephens	232	Colonel Classic
T2nd	Kelli Warner	226	OVC Championships
3rd	Aubree Moore	233	Colonel Classic
T4th	Leslie Booth	236	Colonel Classic
4th	Melissa Rosloniec	161	Murray Racer Classic

2006-07

1st	Melissa Rosloniec	232	Colonel Classic
2nd	Aubree Moore	224	Samford Intercollegiate
T5th	Melissa Rosloniec	77	UC Fall Invitational

2007-08

1st	Kelli Warner	73	APSU Intercollegiate
2nd	Kelli Warner	148	2007 Lady Indian Classic
5th	Kelli Warner	80	NewWave Racer Classic

2008-09

T5th	Gabrielle Andersson	237	OVC Championship
------	---------------------	-----	------------------

2009-10

T2nd	Gabrielle Andersson	225	Drake Creek Fall Invitational
T2nd	April Emerson	185	OVC Championship
4th	Linda Hogberg	78	MSU/Marshall/EKU Tri Match

LOW SCORES - INDIVIDUAL

SINGLE ROUND

69	April Emerson	2009-10	OVC Championship
70	Ashley Peyman	2004-05	BSU Cardinal Classic
70	Lisanne Schmidt	2009-10	Napa River Grill Cardinal Cup
71	Kelli Wilson	2000-01	Lady Highlander Invit.
71	Tamara Thompson	2002-03	EKU Fall Invitational
72	Beverly Brockman	1996-97	EKU Lady Colonel Classic
72	Jackie Biro	1999-00	Lady Highlander Invit.
72	Jackie Biro	1999-00	Saluki Invitational
72	Colleen Yeager	2000-01	Lady Racer Classic
72	Colleen Yeager	2000-01	EKU Lady Colonel Classic
72	Kelly Flynn	2003-04	Great Smokies Classic
72	Linda Hogberg	2008-09	Cardinal Classic
73	Julie Bourne	1995-96	OVC Championships
73	Beverly Brockman	1995-96	EKU Lady Colonel Classic
73	Beverly Brockman	1996-97	EKU Lady Colonel Classic
73	Erica Montgomery	1996-97	EKU Lady Colonel Classic
73	Colleen Yeager	1998-99	JSU Gamecock Classic
73	Leslie Fossitt	2000-01	Lady Highlander Invit.
73	Colleen Yeager	2000-01	North/South Collegiate
73	Leah Larkin	2002-03	Great Smokies Collegiate
73	Brittany Klein	2003-04	EKU Lady Colonel Classic
73	Brittany Klein	2004-05	Lady Colonel Classic
73	Leslie Booth	2005-06	Wildcat Fall Invitational
73	Kelli Warner	2005-06	OVC Championships
73	Melissa Rosloniec	2006-07	Colonel Classic
73	Aubree Moore	2006-07	Samford Intercollegiate
73	Aubree Moore	2006-07	Samford Intercollegiate
73	Melissa Rosloniec	2006-07	Samford Intercollegiate
73	Melissa Rosloniec	2007-08	Gamecock Classic
73	Kelli Warner	2007-08	Gamecock Classic
73	Gabrielle Andersson	2007-08	Napa River Grill Cardinal Cup
73	Leslie Booth	2007-08	ULM Fred Marx Invit.
73	Kelli Warner	2007-08	F&M Bank APSU Inter.
73	Melissa Rosloniec	2007-08	Saluki Invitational
73	Gabrielle Andersson	2008-09	Cardinal Classic
73	Linda Hogberg	2009-10	Drake Creek Fall Invit.
74	Erica Montgomery	1996-97	Dayton Invitational
74	Jackie Biro	2000-01	Lady Highlander Invit.
74	Krissie Kirby	2000-01	EKU Fall Invitational
74	Kelli Wilson	2000-01	EKU Lady Colonel Classic
74	Kelli Wilson	2000-01	OVC Championships
74	Jennifer Sullivan	2001-02	Lady Highlander Invit.
74	Jennifer Sullivan	2001-02	Great Smokies Collegiate
74	Brittany Klein	2003-04	EKU Fall Invitational
74	Brittany Klein	2004-05	OVC Championship
74	Leah Larkin	2004-05	BSU Cardinal Classic
74	Rachel Montgomery	2005-06	OVC Championships
74	Rachel Montgomery	2006-07	Samford Intercollegiate
74	Leslie Booth	2007-08	Napa River Grill Cardinal Cup
74	Kelli Warner	2007-08	Lady Indian Classic
74	Kelli Warner	2007-08	Lady Indian Classic
74	Linda Hogberg	2008-09	Gamecock Classic
74	Katie Wiedmar	2008-09	EKU EI Diablo
74	Gabrielle Andersson	2009-10	Drake Creek Fall Invit.
74	Lisanne Schmidt	2009-10	Drake Creek Fall Invit.
74	Lisanne Schmidt	2009-10	Zippy Invitational
74	April Emerson	2009-10	Pinehurst Challenge
74	Lisanne Schmidt	2009-10	Pinehurst Challenge
74	April Emerson	2009-10	C&F Bank Inter.
74	April Emerson	2009-10	Lady Colonel Classic
74	Kara Fant	2009-10	Lady Colonel Classic

36 HOLE TOURNAMENT

145	Beverly Brockman	1996-97	EKU Lady Colonel Classic
148	Kelli Warner	2007-08	Lady Indian Classic
149	Colleen Yeager	2000-01	North/South Collegiate
149	Gabrielle Andersson	2008-09	Cardinal Classic
149	April Emerson	2009-10	Pinehurst Challenge
150	Beverly Brockman	1996-97	Saluki Invitational
150	Erica Montgomery	1996-97	EKU Lady Colonel Classic
150	Brittany Klein	2004-05	Lady Colonel Classic
150	Brittany Klein	2004-05	OVC Championship
150	Gabrielle Andersson	2007-08	Cardinal Cup
150	Linda Hogberg	2008-09	Gamecock Classic
151	Colleen Yeager	2000-01	Lady Racer Classic
151	Jackie Biro	2000-01	EKU Fall Invitational
151	Jennifer Sullivan	2001-02	Great Smokies Collegiate
151	Tamara Thompson	2002-03	EKU Fall Invitational
151	Brittany Klein	2003-04	EKU Fall Invitational
151	Ashley Peyman	2004-05	BSU Cardinal Classic
151	Leslie Booth	2005-06	Wildcat Fall Invitational
151	Rachel Montgomery	2006-07	Samford Intercollegiate
151	Aubree Moore	2006-07	Samford Intercollegiate
151	Melissa Rosloniec	2007-08	Saluki Invitational

54 HOLE TOURNAMENT

223	Brittany Klein	2004-05	Lady Colonel Classic
224	Leslie Booth	2005-06	Wildcat Fall Invitational
224	Aubree Moore	2006-07	Samford Intercollegiate
225	Gabrielle Andersson	2009-10	Drake Creek Fall Invit.
226	Kelli Warner	2005-06	OVC Championships
227	Brittany Klein	2003-04	EKU Lady Colonel Classic
227	Melissa Rosloniec	2007-08	Gamecock Classic
228	Linda Hogberg	2009-10	Drake Creek Fall Invit.
228	Lisanne Schmidt	2009-10	Napa River Grill Cardinal Cup
228	April Emerson	2009-10	Lady Colonel Classic
229	Beverly Brockman	1995-96	OVC Championships
229	Rachel Montgomery	2006-07	Samford Intercollegiate
229	Linda Hogberg	2008-09	Gamecock Classic
229	Kara Fant	2009-10	Lady Colonel Classic
230	Colleen Yeager	2000-01	EKU Lady Colonel Classic
230	Kelli Wilson	2000-01	EKU Lady Colonel Classic
230	Brittany Klein	2004-05	EKU Fall Invitational
230	Gabrielle Andersson	2007-08	Napa River Grill Cardinal Cup
231	Kelli Wilson	2000-01	OVC Championship
231	Tamara Thompson	2001-02	EKU Lady Colonel Classic
231	Leah Larkin	2004-05	EKU Fall Invitational
231	Brittany Klein	2004-05	OVC Championship
231	Melissa Rosloniec	2006-07	Samford Intercollegiate
231	April Emerson	2009-10	Drake Creek Fall Invit.
231	Lisanne Schmidt	2009-10	Zippy Invitational
231	Linda Hogberg	2009-10	Lady Colonel Classic
232	Beverly Brockman	1996-97	OVC Championship
232	Jackie Biro	1997-98	OVC Championship
232	Jennifer Sullivan	2001-02	EKU Lady Colonel Classic
232	Kelli Wilson	2001-02	EKU Lady Colonel Classic
232	Tamara Thompson	2002-03	Pat Bradley Invitational
232	Kelli Warner	2004-05	OVC Championship
232	Shellie Stephens	2005-06	Wildcat Fall Invitational
232	Melissa Rosloniec	2006-07	Colonel Classic
232	Gabrielle Andersson	2008-09	EKU Spring Invitational
233	Brittany Klein	2004-05	Pat Bradley Invitational
233	Leah Larkin	2004-05	Lady Colonel Classic
233	Leslie Booth	2005-06	OVC Championships
233	Aubree Moore	2005-06	Colonel Classic
233	Kelly Flynn	2005-06	OVC Championships
233	Melissa Rosloniec	2006-07	Cardinal Cup
233	Kelli Warner	2007-08	Gamecock Classic
233	Taylor Church	2008-09	Xavier Invit.



Press Passes

Credentials are issued to members of the working media only. Requests for credentials should be made to Kevin Britton, Assistant Director of Athletic Public Relations at (859)622-2006 or kevin.britton@eku.edu.

Services

Team and individual results are provided at every Eastern Kentucky home event.

Player Interviews

Phone interviews will be arranged at the player's convenience, but it is asked that all player interviews (in person or via phone) be arranged through the Athletic Public Relations Office. Requests are asked to be made at least 24 hours in advance.

Coaches' Interviews

The best time to interview Coach Whitson is in the morning. Please call the Athletic Public Relations Office to set up all interviews.

How to Get to Eastern Kentucky University

From Cincinnati, Ohio and Points North:

Take I-75 South through Lexington, Ky. Continue south on I-75 Richmond/Knoxville to exit #87 (second Richmond exit). Make a left and cross over the interstate heading east on the Richmond bypass for one mile and you will see the main ECU campus on the left.

From Huntington, W.Va., and Points East:

Take I-64 West for 104 miles to exit #96 (Fort Boonesborough S.P.) and remain on State Highway 627 until intersecting I-75 at exit #95. Take I-75 South to exit #87 (second Richmond exit). Make a left and cross over the interstate heading east on the Richmond bypass for one mile and you will see the main ECU campus on the left.

From Lexington, Ky.:

Take I-75 South to exit #87 (second Richmond exit). Make a left and cross over the interstate heading east on the Richmond bypass for one mile and you will see the main ECU campus on the left.

From Bowling Green, Ky., and Points West:

Take I-65 North to exit #43 (Glasgow) and travel east on the Cumberland Parkway through Somerset to exit #41 on I-75. Travel north on I-75 to exit #87. Turn right at the end of the off ramp and head east on the Richmond bypass for one mile and you will see the main ECU campus on the left.

From Knoxville, Tenn., and Points South:

Take I-75 North approximately 162 miles to exit #87 in Kentucky. Turn right at the end of the off ramp and head east on the Richmond bypass for one mile and you will see the main ECU campus on the left.

Media Contact Information

Athletic Public Relations Golf Contact – Kevin Britton

Work Phone . . . 859-622-2006
Cell Phone 859-358-8359
Fax 859-622-5108
E-mail kevin.britton@eku.edu

Mailing/Shipping Address

521 Lancaster Ave.
Alumni Coliseum 115
Richmond, KY 40475

Web Site

www.EKUSports.com



Eastern Kentucky's official colors are maroon (PMS 209) and white.



Michael Clark
Director of Athletic
Public Relations



Kevin Britton
Asst. Dir. of Athletic
Public Relations



Steve Fohl
Asst. Dir. of Athletic
Public Relations

ARLINGTON



Arlington, home to the Eastern Kentucky men's and women's golf teams, features a picturesque 6,686 yard, par 72 course located on the estate grounds. The multi-purpose complex, surrounding the Arlington Mansion, is designed to serve the social, recreational and academic needs of the university community.

The mansion, with its fine dining and social facilities, is the focal point of the estate and is located near the swimming pool and tennis courts. The "Mulebarn", a renovated horsebarn on the property, contains a stage area and large dance floor and is used for a variety of events.