

5-1-1926

## Milestone - 1926

Eastern Kentucky State Normal School and Teachers College

Follow this and additional works at: <http://encompass.eku.edu/yearbooks>

---

### Recommended Citation

Eastern Kentucky State Normal School and Teachers College, "Milestone - 1926" (1926). *Yearbooks*. Book 5.  
<http://encompass.eku.edu/yearbooks/5>

This Article is brought to you for free and open access by the University Publications at Encompass. It has been accepted for inclusion in Yearbooks by an authorized administrator of Encompass. For more information, please contact [Linda.Sizemore@eku.edu](mailto:Linda.Sizemore@eku.edu).

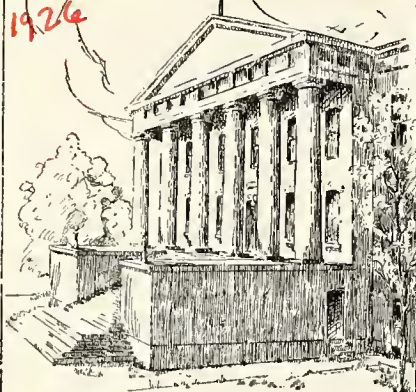
W. B. ELLIOTT

The  
QUESTONE  
1925



LD.  
1741  
E463  
m5  
1926

Kentuckiana  
John Wilson Townsend Library



EASTERN TEACHERS COLLEGE

RICHMOND



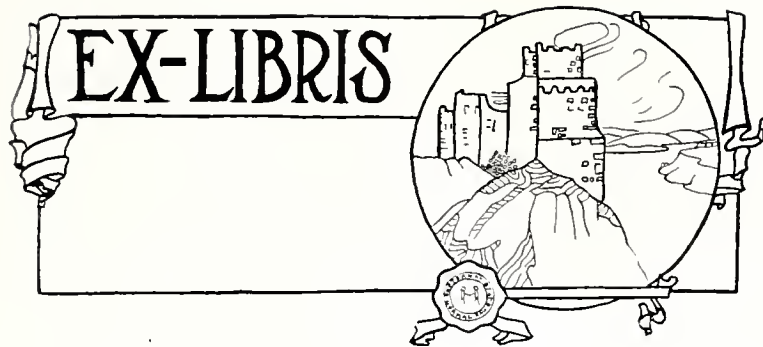
KENTUCKY


S. R.











Digitized by the Internet Archive  
in 2011 with funding from  
LYRASIS Members and Sloan Foundation

<http://www.archive.org/details/milestone1926east>

The MILESTONE '26

*The*  
MILESTONE  
1926



*Published by the*  
*Senior College of the Eastern Kentucky State*  
*Normal School and Teachers College*

RICHMOND

Town  
221 1/2  
E 4th St  
M50  
1726

### Dedication

In appreciation of his twenty years of untiring, devoted and earnest services to Eastern the Class of 1926 dedicate this volume to  
**DR. WREN JONES GRINSTEAD**  
whom we love as a friend, venerate as a professor, scholar and gentleman.



DR. WREN JONES GRINSTEAD



## Foreword

IT is a difficult task to give the wherefore of an annual. Yet still more difficult is the task of imparting to such a publication very much originality, either in appearance or content. So we feel constrained to offer this short preface as a prayer for leniency in judging the book in its short-comings and crudities. In brief, however, we attempt to present a complete record of the happenings of the college year, and to present that material in as attractive a form as possible. Primarily, this is a picture book. It is our sincerest desire that this volume shall be the medium through which your memory shall be quickened and caused to reflect upon happy associations and occasions. And when in the aftermath of life, you dream of the long ago, may it be an ever-present guide to lead you back to that sweetest of all oases in the Desert of the Years—the happy care-free college days. Thus do we present to you, the friends of Eastern, the fifth volume of our college annual—The Milestone of nineteen hundred twenty-six.

## Table of Contents

Book I *Faculty and Administration*

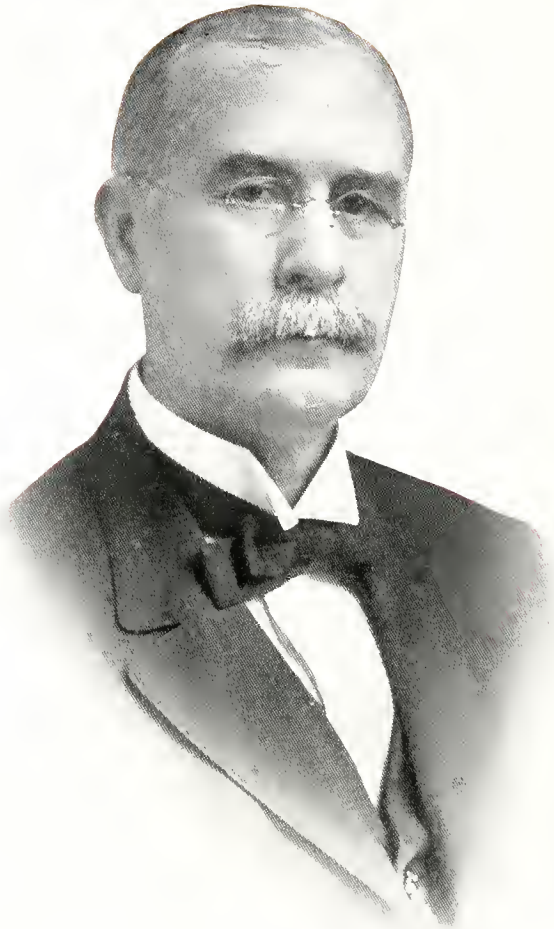
Book II . . . . . *The College*

Book III . . . . . *The Normal*

Book IV . . . . . *Athletics*

Book V . . . . . *Organizations*

Book VI . . . . . *Humor and Ads*



The above is an excellent likeness of the Hon. J. A. Sullivan, who has been a resident regent of the Eastern Kentucky State Normal School and Teachers College since its establishment in 1906. During all these years he has given ungrudgingly of his time and great ability. Words cannot express the great service he has been to the institution. He is greatly beloved by the faculty, the student body and all others connected with the school.



The MILESTONE '26





The MILESTONE '26





# CHURCHES





The MILESTONE '26





**Faculty and  
Administration**







# FACULTY

The MILESTONE '26



ENTRANCE TO UNIVERSITY HALL

The MILESTONE '26



THOMAS J. COATES  
*President*

C. A. KEITH  
*Dean of Men  
History*

HOMER E. COOPER  
*Dean of the Faculty  
Education*

MARIE L. ROBERTS  
*Dean of Women*



J. R. ROBINSON  
*Registrar  
History*

M. E. MATTOX  
*Acting Registrar  
Education*

MAUDE GIBSON  
*Art*

MARY B. DEANE  
*Geography*



The MILESTONE '26

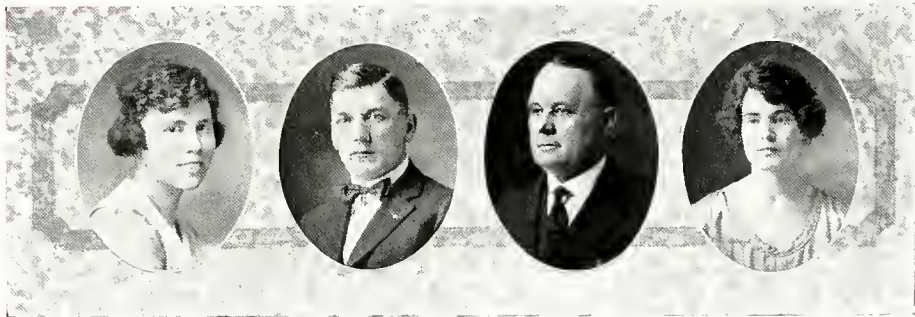


ANNA A. SCHMIEB  
*Education*

FRANCES POTTER  
*Critic*  
*Grades 2 and 3*

JOHN ORR STEWART, JR.  
*Public School Music*

R. DEAN SQUIRES  
*Director of Extension*  
*Education and Latin*



EDNA ZELHOFER  
*English*

GERMANIA WINGO  
*Critic*  
*Grades 4 and 5*

A. B. CARTER  
*Farm Manager*  
*Biology*

G. O. BRYANT  
*Mathematics*

The MILESTONE '26



R. E. JAGGERS  
*Director*  
*Rural Education*

MEREDITH J. COX  
*Chemistry*

MARY ESTELLE REID  
*Librarian*

MARY FRANCES MCKINNEY  
*Critic*  
*Grades 7 and 8*



GEORGE N. HEMBREE  
*Physical Education*  
*for Men*

R. A. FOSTER  
*English*

LORNA BRESSIE  
*Geography*

EMMA Y. CASE  
*Critic*  
*Rural School*



The MILESTONE '26



MAE POWELL  
*Critic*  
Grades 5 and 6

MINNIE PIGG  
*Critic*  
*Green's Chapel School*

REX W. COX  
*Agriculture*

GEORGE DRURY SMITH  
*Biological Sciences*



MAY C. HANSEN  
*Critic*  
Grades 1 and 2

BROWN E. TELFORD  
*Public School Music*  
*and Piano*

HAMBLETON TAPP  
*English*

R. A. EDWARDS  
*Director*  
*Training School*

The MILESTONE '26



VIRGIL E. BURNS  
*Education and History*

JAMES V. LOGAN, JR.  
*English*

RUTH DIX  
*Home Economics*

HETTIE LEATHERS  
*Principal  
Kavanaugh School*



SMITH PARK  
*Mathematics and Physics*

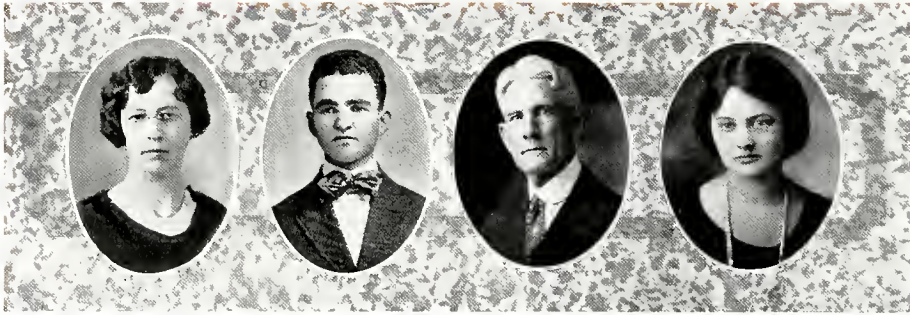
NOBLE G. DENISTON  
*Director  
Industrial Arts*

HORTENSE LEWIS  
*Physical Education  
for Women*

PEARL BUCHANAN  
*Reading and Expressions*



The MILESTONE '26



LENA L. McCLISTER  
*Critic*  
*Grades 4 and 5*

MARGARET LINGENFELSER  
*Critic*  
*Kavanaugh School*

R. C. RIGGAN  
*Agriculture*

C. E. CALDWELL  
*Mathematics*



MARY FLOYD  
*History and English*

GLADYS TYNG  
*Critic*  
*Grades 5 and 6*

I. H. BOOTHE  
*Mathematics*

CARRIE M. WATERS  
*Assistant Librarian*

The MILESTONE '26



CARA BOLDRICK  
*Art*

KATHERINE ROBERTS  
*French and English*

WINNIE DAVIS NEELEY  
*English*

W. C. JONES  
*Mathematics and Physics*



MARY KING BURRIER  
*Home Economics*

ISABEL BENNETT  
*Assistant Librarian*

CORA LEE  
*Critic*  
*Grades 8 and 9*

FALLEN CAMPBELL  
*Field Representative*  
*Rural Education*









## Board of Regents

McHenry Rhoads, Frankfort, Kentucky  
*State Superintendent of Public Instruction*  
*Ex-Officio Chairman*

Judge J. W. Cammack, Owenton, Kentucky  
*Secretary of Board*

Hon. C. F. Weaver, Ashland, Kentucky

Hon. H. M. Brock, Harlan, Kentucky

Hon. J. A. Sullivan, Richmond, Kentucky

Pres. T. J. Coates, Richmond, Kentucky



The MILESTONE '26



FRED L. BALLOU  
*Bookstore Clerk*



MARIAN WEBBER  
*Secretary to Director of Extension*



EARL P. MCCONNELL  
*Bookkeeper*



MARY LOUISE WATERFILL  
*Secretary to the Registrar*



G.M. BROCK  
*Business Agent*



MRS. HART L. PERRY  
*Secretary to the Registrar*



MADGE TAYLOR  
*Secretary to Dean*



W.A. AULT  
*Superintendent of Power Plant  
Buildings & Grounds*



MAYE M. WALTZ  
*Secretary to the Business Agent*



CORYNNE LOWE  
*Stenographer, Business Office*



VERA LANDER  
*Stenographer, Extension Office*



KATHERINE MORGAN  
*Secretary to the President*



MARTHA O. VEAL  
*Stenographer, Business Office*



# The College







# SENIORS

## The Senior Love Song to Eastern

O Eastern! dear old Eastern,  
The school so near our heart,  
With joyous song we praise thee,  
We have, in thee a part.  
A little band of Seniors,  
We pioneer the way  
For glory that will follow  
In some not distant day.

We love thy halls of knowledge  
Where teachers, brave and true  
Are leading us to wisdom,  
Inspiring visions new.  
We love the fame you're building,  
We're glad our lot is here  
Beneath old Eastern's colors;  
To us thy name is dear.

We love thy campus, Eastern,  
With all its lovely trees  
Our hearts are filled with dancing  
To music in their leaves.  
We love its rustic by-ways,  
Its velvet dells of green,  
In all our great Kentucky  
No lovelier spot is seen.

We love thee in September  
When trooping legions come  
To swell their store of learning  
And Freshmen have their fun.  
We love thy hearty welcome,  
The glad handshakes, the while,  
Which greet us from old teachers  
Who meet us with a smile.

We love thee in October  
When leaves are turning brown  
And pumpkins growing yellow

And Hallowe'en comes round  
We love the fun and cider,  
The merry spooks and games;  
For music and for frolic  
Old Eastern has a name.

We love thee in the winter  
When snowy blanket, white  
Wraps all in icy splendor  
And trees are ghosts at night.  
'Tis then we bend to duty  
Rememb'ring your old ways,  
Exams of first semester  
With C's and F's and A's.

We love thee in the Springtime  
When a Senior dons his gown,  
And all our teams victorious  
Return to stir the town.  
We love thee in the June time  
When sheepskins are in style;  
O Eastern! how we love thee,  
We love thee all the while!

We love thee in the summer  
When comrades from the field  
Return to have vacation  
By whetting up their steel.  
The dear familiar faces  
Take on a light sublime  
They're getting back to Eastern  
And friends of olden time.

When we have all departed,  
And scattered far and wide,  
Our dear old Alma Mater,  
We'll point to thee with pride;  
And when the call "Alumni,"  
Peals out across the state  
You'll hear our answer, "Eastern,  
We're coming, set our plate!"

Lilian J. Wells, '26.





## Class Officers

ELIZABETH NORTH  
*President*

SARA ARBUCKLE  
*Vice-President*

KATHERINE YAGER  
*Secretary*

J. F. MILLS  
*Treasurer*



CLAYTON G. MAINOUS

Conkling, Ky.

B. S. in Industrial Arts

"Sarge" has been with us for so long that he is almost essential to our school. He took both his High School and college work at Eastern. "Sarge" has been a most valuable member of the athletic life of our school and his ability along this line will be greatly missed.

BESS WHITE

Richmond, Ky.

A. B. in English

Bess! Where is the person who doesn't love her! Soon after she came to us we found we had a very industrious, jolly and lovable girl in our midst. She has proved that she is an all-round student, for besides being jolly and likeable she is an active participant in all college activities, at the same time showing the "profs" the skillful, studious side of her nature.

RUTH RILEY

Covington, Ky.

A. B. in English

The name speaks for the personality. Her gentle disposition, modest demeanor and pleasing personality have won many friends for her. Ruth is a splendid student and a girl whose friendship we all desire.

JUDSON HARMON

Whitley Citv. Ky.

A. B. in Social Science

"Jud." is an all-round college man. He is very versatile in his accomplishments. During his years at Eastern he has always stood at the head of his classes, has been a leader and has won the respect of faculty and students alike. Next year "Jud" is going to Peabody to work for his M. A. degree and from there to Columbia for his Ph. D. We are sure there is great success in store for him.



## The MILESTONE '26

C. E. WORD

Concord, Ky.

A. B. in Social Science

"Lengthy" has been an outstanding character at Eastern, a man of no small ability. He is certainly a substantial all-round college man. During the three years he has been with us he has played on all the football, basketball and baseball teams. We predict much success for him in whatever work he may take up.

ELIZABETH NORTH

Frankfort, Ky.

A. B. in Education

Here is one whom we all love, not only the class of '26 but the faculty and whole student body. It can truly be said, "she is an ideal college student"—enthusiastic, industrious, studious and a leader in every college activity. "North" will be greatly missed at Eastern.

LAWRENCE ELLIS

Danville, Ky.

B. S. in Mathematics

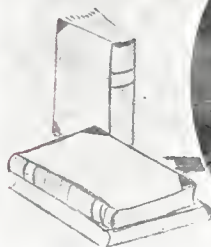
"Lary" is quiet and unassuming in manner. He liked the class of '26 so well that, although he has not been with us this year he is coming back in the summer to complete his work. We do not know his plans, but "Lary" possesses certain business qualities which will add much to his success in what ever work he may attempt.

SARA ARBUCKLE

Richmond, Ky.

A. B. in English

A product of Blue Grass and blue blood, Sara is cultured, refined, and gentle. She is possessed of a winsomeness and charm of manner that has endeared her to all. Her hobby is English, her pet aversion is Math. "Rice" is a favorite dish with her, and she is interested in Mason-ry as a profession. Here's to her future, may it be sunshine and roses.







MELBA W. CARTER

Richmond, Ky.

B. S. in Home Economics

Beautiful, is certainly an appropriate adjective to use in describing Melba. In fact, during her first year at Eastern her beauty and charming personality ensnared the heart of one of our most popular faculty members. Melba has taken some of her work at Peabody, but the class of '26 deems it an honor to number her among its members.



G. A. NIEKIRK

Springfield, Ky.

A. B. in Social Science

His policy is either to find a way or make one—a man with a purpose. He is one of frankness, dignity, economy and firm convictions. He's an interesting volume if you only know how to read him.



W. P. GULLETT

Stacy Fork, Ky.

A. B. in Education

"Gullett" has taken much of his work at Eastern. Some of us come to college to have a good time, others to be in style, but "Gullett" comes for the sole purpose of getting an education. He plans to be a H. S. principal. The best wishes of the class go with him.



KATHERINE YAGER

LaGrange, Ky.

A. B. in English.

"Kat" is one of the best known and most popular members of the class of '26. She is always full of "pep," enthusiasm and new ideas. Yet from the generous sprinkling of "A's" on her record we know she is a splendid student too. "I don't know," is an unknown expression in her vocabulary.

LILLIAN WELLS

Wilmore, Ky.

A. B. in English

Lillian has a certain poise and dignity which is very charming. It is by means of this same dignity and an unusual amount of "gray matter" she has made such an impression on her professors that good grades are conspicuous on her record. Lillian has quite marked ability in writing poetry. For example, just read our class poem.

ORVILLE PRICE

Richmond, Ky.

B. S. in Physical Science

The class of '26 takes one of Eastern's best and most popular men away from the campus and its activities. "Sleepy," only in name, because as Editor of this annual he has certainly proved he is wide-awake and full of initiative. Yet every college activity has at some time or another felt his support. "Here's to Sleepy" may the future bring him much success.

JENNINGS MILLS

Covington, Ky.

B. S. in Mathematics

Don't tell us you don't know the Mills' brothers. "Jeff" is the younger of the firm. He has taken only two years of his work here, but has been a very valuable member of our class. He interested in all College activities and is a splendid combination of a jolly good fellow and an earnest worker. We predict for him a very bright future, for a man that has ability and is popular too, will always come to the front.

MRS. VIRGIL McMULLIN

Richmond, Ky.

B. S. in Home Economics

Quiet, modest, unassuming "Tab" is the type who has no enemies, for she attends strictly to her own business. She is a rare combination of reserved dignity and humor. "Tab" has been one of the most faithful and loyal members of the class of '26.



The MILESTONE '26



EMMA YOUNG CASE

Lawrenceburg, Ky.

A. B. in English

Here is one who is laughter loving and good natured! She is a genius for making friendship and her spirit spreads sunshine wherever she goes. She loves her own way, but her way is usually right. Indeed, there are few who have done so much for Eastern.

VIRGINIA ROUNTT

Hunstonville, Ky.

B. S. in Chemistry

"Ginger blue" is one of the merriest members of our class. But in spite of her merriment she elects the stiffest courses in college. She takes, and we might add, teaches chemistry as a pastime. Virginia has the ability and determination to accomplish great things that will make her Alma Mater proud of her.





---

# JUNIORS



EDITH BURNS  
*Vice-President*

EVA SMITH  
*President*

MABLE HARMON  
*Secretary-Treasurer*

## The Juniors

What think you of the faces before you? Do you not discern there the courage, the determination and the steadfastness necessary to achieve success? Yea, verily and what is more we see disclosed the love of battle, the flush of achievement and the sheer joy of living.

We are the Juniors. We are a select crowd. There were others among us. Some of these have had to drop behind; others have been forced ahead but we stand by our convictions and proclaim ourselves Juniors.

It is impossible and unnecessary to trace step by step the history of this class but may we present, as a source of inspiration for the past, present, and future achievements, our motto—*“Nothing without labor.”*



The MILESTONE '26



MAUDE KNOX

Bowen, Ky.

Major—Education

*"All truth is not told."*

LEE PELLEY

Morning View, Ky.

Major—Social Science

*"He has a heart as sound as a bell, and  
his tongue is the clapper."*

ESTELLE MOORE

Lancaster, Ky.

Major—English

*"Principle is ever her motto."*

ALMA BRAVARD

Germantown, Ky.

Major—Science

*"They conquer who believe they can."*





J. DORLAND COATES

Richmond, Ky.

Major—Social Science

*"He is witty, bright, winning and gay.*

*Never wearing a frock, even on a  
rainy day."*

BESS MOORE

Versailles, Ky.

Major—Education

*"As merry as the day is long."*

EDITH BURNS

Richmond, Ky.

Major—English

*"Question not, but live and labor till  
the goal is won."*

MABLE HARMON

Whitley City, Ky.

Major—Social Science

*"As free from sorrow as from sin."*

The MILESTONE '26



MARIE SCANLON

Norwood, O.

Major—English

*"Here buds the promise of a celestial worth."*

EVA SMITH

Frankfort, Ky.

Major—Mathematics

*"Charm plus efficiency."*

RUSSELL ALEXANDER

Kirksville, Ky.

Major—Science

*"The world loves a lover."*

RUTH FUGITT

Prestonsburg, Ky.

Major—English

*"If it is not right; she does not do it."*



The MILESTONE '26



EMMA B. ROSS

Lancaster, Ky.

Major—English

*"Great thoughts like great deeds need  
no trumpets."*

ZELMA HUNDLEY

Brumfield, Ky.

Major—Mathematics

*"Deeds not words."*

MARGARET BALDWIN

Red House, Ky.

Major—Home Economics

*"Modest, quiet and thoroughly capable."*

MILDRED SCOTT

Richmond, Ky.

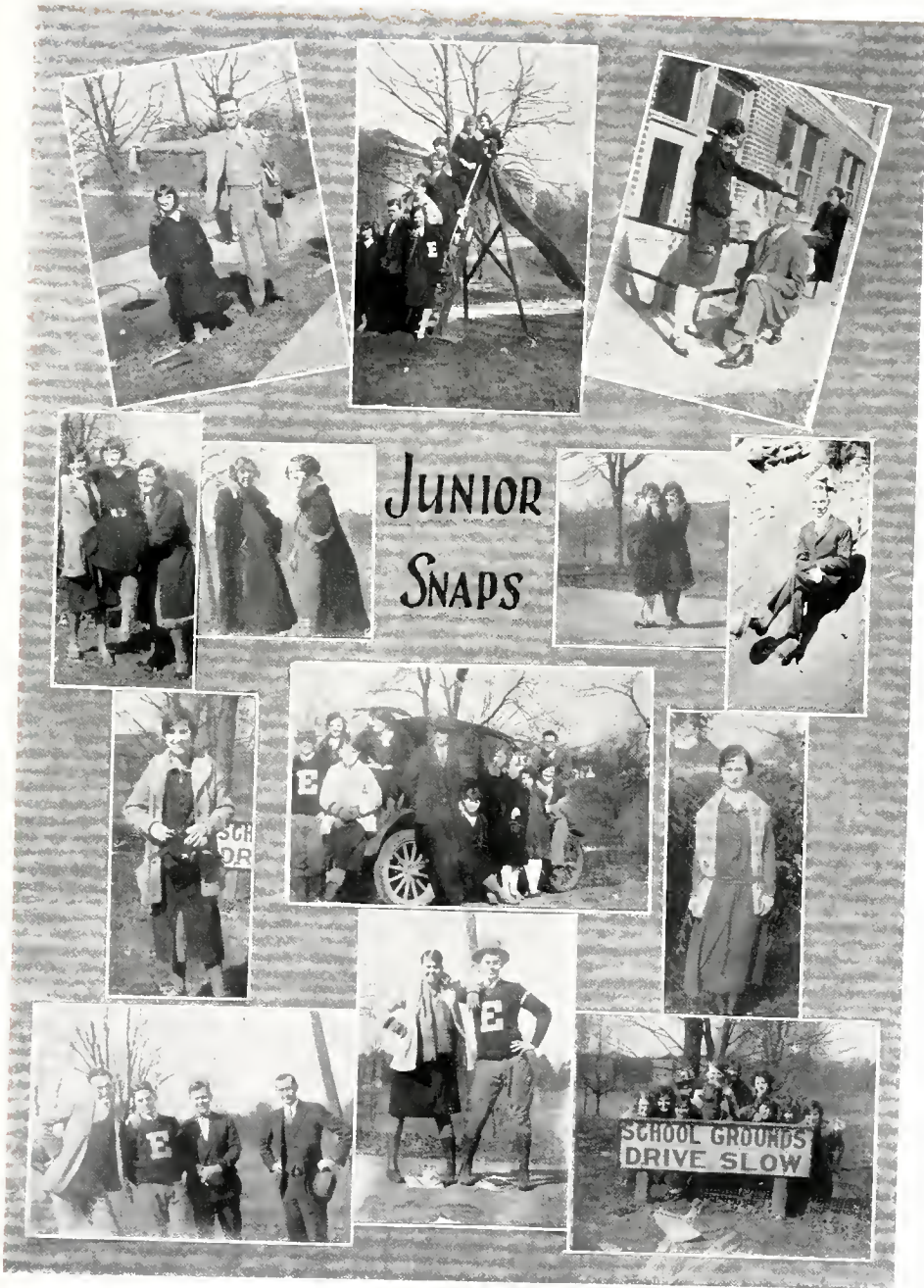
Major—English

*"Her Air, her Manners, all echo saw  
admired;*

*Courteous though coy, and gentle  
though retired."*



The MILESTONE '26



# Who's Who

<i>Name</i>	<i>Known as</i>	<i>Hobby</i>	<i>Loafing place</i>	<i>Favorite saying</i>
Russell Alexander	"Alex"	Courting	The Baxoria	"Well"
Margaret Baldwin	"Peggy"	Music	Home Ec Building	"I thought I'd die"
Alma Bravard	"Barvady"	Making graphs	Mr. Cox's room	"Well, I'll declare"
Edith Burns	"Burnsie"	Studying	Roark Hall	"I'm so tired"
Rena Clark	"Kenie"	Courting	Chemistry Lab	"Ain't that the truth"
Dorland Coates	"Darling"	Collecting money	Perry's	"I told you so"
John W. Cook	"North Pole"	Seeking for youth	Library	"Be on time"
Flo Evans	"Nig"	Toe dancing	Land of Heart's Desire	"Gallie Horn"
Ruth Fugitt	"Fugi"	Reading Shakespeare	Lobby of Burnam	"Honey"
Hassadore Hall	"Has"	Attending chapel	Keith's room	"Daggone"
Mable Harmon	"Bubbles"	Going to cottage after prem whistle	Picture show	"Say Tartar"
Deve Hendricks	"Dewy"	Ambition is the germ of all noble deeds	Library	"Let the world go free"
Zelma Hundley	"Bec"	Math	Cox's room	"Well, I just couldn't"
Marshall Hurst	"Mock"	Football	Joe's	"Goodness alive"
Virginia Jones	"Jen"	Cross word puzzles	Post Office	"Wish I were larger"
Joe King	"King"	Studying	Central	"You hush"

# Who's Who

<i>Name</i>	<i>Known as</i>	<i>Hobby</i>	<i>Loafing place</i>	<i>Favorite saying</i>
Sam King	"Slim"	Looking for a wife	In a Durant	"Oh! you kid"
Maude Knox	"Trouble"	Bridge	Gym	"By and 'double' ye"
C. D. Mayse	"Mace"	A median	Home	"You never can tell"
A. F. McGuire	"Mickey"	Economics	Rosedale	"Get a move on"
Bess Moore	"B"	Reading Chaucer	Room 28	"Don't be silly"
Estelle Moore	"Bobby"	Reading	Mr. Jagger's room	"Honest-to-goodness"
Emma Noland	"Slim"	Courting	Library	"Well, I'll say"
Lee Pelley	"Pel"	Acting a fool	Zell's room	"Gimme an 'A'"
L. K. Rice	"Smiley"	Driving a "tin Lizzie"	Post Office	"You don't say so"
Emma B. Ross	"Bakie"	Dodging	On the highway	"No such trash"
Marie Scanlon	"Scandle"	Passing up Candy "?"	Post Office	"Sure 'nough"
Eloise Samuels	"Sam"	Going to art	Art room	"Oh! look now"
Mildred Scott	"Midge"	Speeding	Third floor	"Tickled to death"
Eva Smith	"Kitten"	Raving	Library	"I'll shoot you"
Talton Stone	"King 'Talt"	Athletics	Perry's	"Where's old fat Edna?"
Beulah Willoughby	"Red"	Cutting classes	Main Street	"Let's go"
Lou Wells	"Lou"	Trying out cars	Picture show	"Let's go to Berea"
Burnice Stapp	"Stapple"	Research work	Library	"Well"



EASTERN RUNS WILD  
OVER MOREHEAD

line where the Crimson charge featur-  
ed by a 37-yard run by Moberly at  
right interference placed the  
ball on the 40-yard line where  
Stone crashe  
other touchdowns  
the ball

SELF-GOVERNMENT  
AT EASTERN

CO-OPERATION

is in grave need of co-  
operation. An appeal was made  
at our last game Saturday  
to meet in which  
President Coates and Judge Cam-  
mack Present Needs of Teachers  
College to Budget Commis-

MAROONS SPLIT  
DOUBLE HEADER

Girls Capture First Game From Su-  
perior Maroon

FRESHMAN CLASS  
GIVE PROGRAM

The Freshman class presented the  
program on Wednesday morn-  
ing. The numbers were gov-  
ernment As-  
stent  
r.  
r.  
st  
er

WHAT EASTERN COULD  
DO WITH \$400,000.00

President Coates and Judge Cam-  
mack Present Needs of Teachers  
College to Budget Commis-

FACULTY NOTES

The Faculty has been filled  
with new members. The net  
result of the London ball  
game was a success. The  
orchestra is doing well.

LET'S LOVE WONDERFUL?

LITTLE THEATRE  
PLAY IS A SUCCESS

With his ears and  
eyes of  
this ac-  
tion  
reads as

BOOSTER CLUB  
HOLDS MEETING

Ar appreciation of \$  
East to  
the first program given at  
the club.

MADISON HI ORCHESTRA  
ENTERTAINS AT CHAPEL

Wednesday another  
concert.

OPEN FORUM CLUB  
ORGANIZED HERE

its fashion. But  
states its master-  
less, on Thu-  
day between  
of the  
by ac-  
in

FRESHMEN WELCOME  
NEW STUDENTS

Play to scoreless tie  
on soggy field

CERTIFICATION BILL  
UP FOR PASSAGE

Smith, a  
new before  
Comm-  
approv-

JUST JOKES

Y. W. INSTALLS  
NEW OFFICERS

The people who  
stallation services  
Thursday, October

BOYS BASKET BALL  
PROGRESSING

First Downs  
Jna  
cer  
on

PROF. G. D. SMITH  
HURT BY AUTOMOBILE

Smith, a  
new before  
Comm-  
approv-

NORMAL AND  
COLLEGE ATHLETICS  
SHOULD BE DIVIDED

Unfair to the Normal Students:  
Causes Unbalanced  
Teams

EASTERN CO-EDS ARE  
CHAMPIONS

Means State T.  
Who Won 10  
Games

NORMAL DEPARTMENT  
IMPORTANT COG HERE

ON PAGE 1 OF THIS IS  
THE PICTURE  
THE BASEBALL TEAM  
KIDNAPING THE 19

MISS JACKSON SPEAKS  
TO LARGE AUDIENCE

(Continued from page 1)  
service, promote health a  
and by the law s  
become fra p  
the sec

ALUMNI COLUMN

The graduates from  
Teachers' College  
and as ex  
aid

TRAINING SCHOOL  
TO GIVE CANTATA

Best to Be Held in  
Class Has Press  
the

SENIORS PRESENT  
LIVELY PROGRAM

The student  
not ce when  
the Sen

TRAINING SCHOOL NEWS

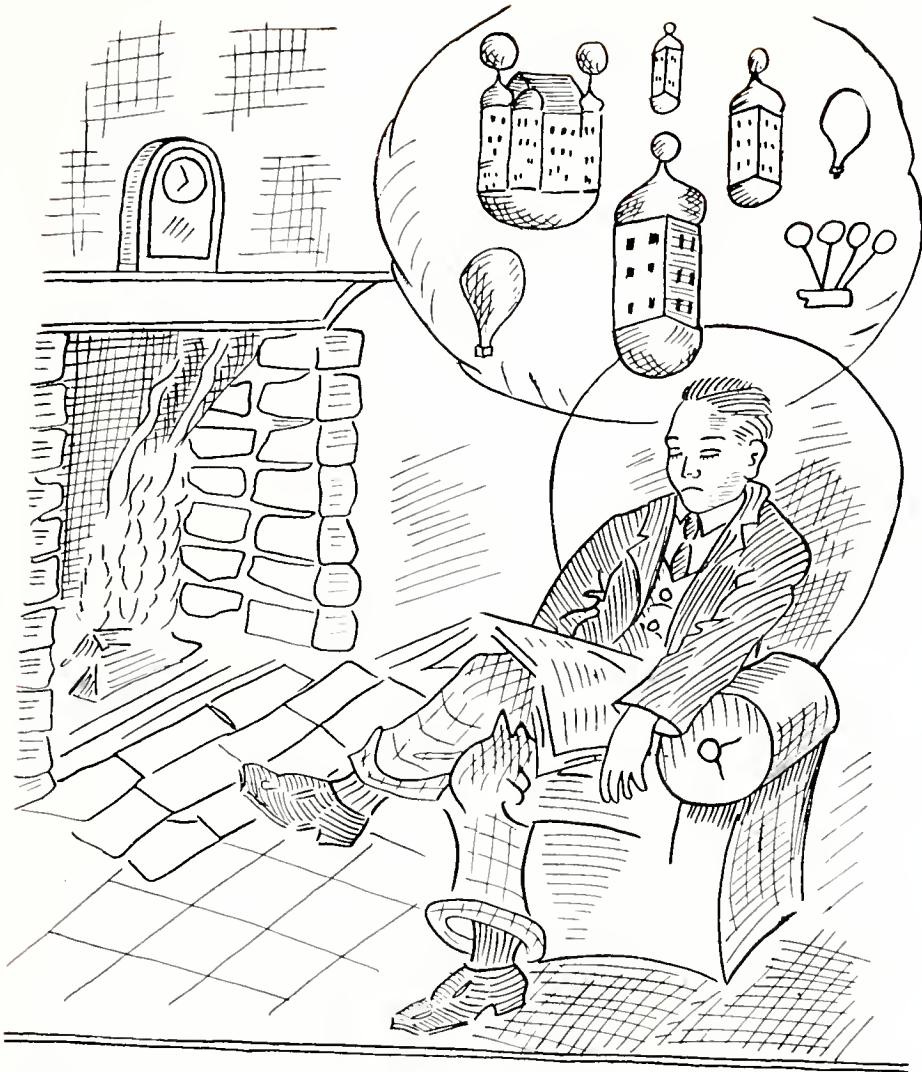
Thanks-  
Pupil-  
P

SELF-GOVERNMENT

Self G. college was  
Kathryn Jea-  
ctors from each  
oted for ble for these offices  
hd n  
en

A CORRECTION

ON PAGE 1 OF THIS IS  
THE PICTURE  
THE BASEBALL TEAM  
KIDNAPING THE 19



# DIPLOMA -- -- CLASS

## Diploma Class

**I**N September, 1924, the Class of 1928 entered the Land of Learning at Eastern Teachers College. After the first few weeks of bashfulness and uncertainty, we organized ourselves into the largest and most enthusiastic group on the campus.

Somehow, we struggled through the sarcasm of the professors, taunts and threats of the upperclassmen, the terrors of the discipline committee and gained marked improvement by each conflict, encouraged by the guidance of our capable advisor.

In all of the organizations we were uppermost in co-operation and support, giving to literary, social, and athletic activities our best service.

Again in 1925 we organized under the name of Sophomore. We lost many of our faithful members, yet others joined us. Though they could not fill the vacancies, they made new places, and we, with their help, have continued our climb with a real zeal and alertness to win.

For some this is the end of their school career, and they plan to go out in the field of education, to do their bit in the struggle for a better Kentucky. Others are looking forward to graduation as the climax of their aspirations and ambitions. Under either condition, we intend to continue climbing, keeping ever in mind our aim in life.



The MILESTONE '26



Class Officers

THOMAS EVERSOLE  
*President*

LEANOR BUTLER  
*Vice-President*

DOROTHY McBRAYER  
*Secretary-Treasurer*

EUNICE SWANNER  
*Pianist*

The MILESTONE '26



RAMONA MATHEWSON

"Christy"

Vanceburg, Ky.

Little Theatre Club.

*"They say this girl is very bright  
But she never studies much;  
She's witty, clever, original,  
And bears a magic touch."*

EDNA HATFIELD

"Hat"

Catlettsburg, Ky.

Y. W. C. A., Horace Mann Literary Society,  
Herbartian Club, Basket Ball Squad.

*"Edna's a calm, athletic girl  
Her blue eyes are a crime;  
She's loyal to her many friends  
And chatters all the time."*

LEONA WILSON GOTT

"Ona"

Richmond, Ky.

Madrigal Club, Upper Grade Teachers'  
Council.

*"She's not a flower, she's not a pearl  
But she's a good all around girl."*

MABEL L. POTTS

"Mabel"

Newport, Ky.

Horace Mann Literary Society, Hebar-  
tian Club, Madrigal Club, Y. W. C. A.

*"I love to wind my tongue up.  
I love to hear it go."*

MABEL KAY ELLIOTT

"Dick"

Butler, Ky.

Neon Krypton Literary Society, Y. W. C.  
A., Upper Grade Teachers' Council,  
Booster Club '23.

*"She speaks, behaves and acts just as  
she pleases."*



MARTHA JOSEPHINE HARRIS

"Marmie"

Prestonsburg, Ky.

Y. W. C. A., Neon Krypton Literary Society,

*"The force of her own merit makes her away."*

MARY MARGARET RICHER

"Ma'ahv"

Cynthiana, Ky.

Madrigal Club, Little Theatre Club, Herbartian Club, Y. W. C. A.

*"A combination of the modern flapper  
And the courtly lady of yesterday,  
With the attractiveness of both."*

BESSIE LEE WRIGHT

"Bess"

Lebanon, Ky.

Little Theatre Club, Y. W. C. A., President of Herbartian Club, Neon Krypton Literary Society, Periclesian Society.

*"We have found her to be sincere, loyal  
and dependable."*

BERNARD STANLEY ALFORD

"Al"

Harrodsburg, Ky.

Football, Class Basket Ball, President of Neon Krypton Literary Society, Upper Grade Teachers' Council, Business Manager of Progress Staff, Milestone Staff Booster Club.

*"All great men are dead, and I feel sick myself."*

KATHRYN PARKER JASPER

"Kattv"

Somerset, Ky.

Herbartian Club, Y. W. C. A.

*"Thoughtful and studious, yet ever  
merry."*





The MILESTONE '26



ROSE HAWKINS

"Billy"

New Liberty, Ky.

Y. W. C. A., Upper Grade Teachers' Council, Neon Krypton Literary Society '25, Horace Mann Literary Society '26.

*"Serene, resolute and still,  
Calm and self-possessed."*

EVALYN FRAZIER

"Evalyn"

Jackson, Ky.

Upper Grade Teachers' Council  
*"She could roaste and sithe and broile  
and frye,*

*Make a good soupe and well-bake a  
pye."*

LORA HUGHES

"Kate"

Pleasureville, Ky.

Y. W. C. A.

*"Gently to hear-kindly to judge."*

ESTHER HELEN ELLIOTT

"Toodlie"

Butler, Ky.

Y. W. C. A., Neon Krypton Literary Society, Upper Grade Teachers' Council.

*"She that hath a merry heart  
Hath a continual feast."*

MARIE JOSEPHINE DANIEL

"Little Danny"

Mentor, Ky.

Horace Mann Literary Society, Y. W. C. A., Booster Club, Herbartian Club.

*"To be little is to be loved."*

The MILESTONE '26

MOLLY SHORTE

"Shorty"

Winchester, Ky.

Horace Mann Literary Society,  
Y. W. C. A.

*"I am satisfied with myself, so why  
should I worry."*

MARY LON DUNBAR

"Peg"

Richmond, Ky.

*"Quiet, retiring, loyal  
Industrious, sincere,  
That she's a model girl,  
It surely doth appear."*

MILDRED ANDERSON RUE

"Milly"

Harrodsburg, Ky.

Y. W. C. A. Cabinet, Booster Club, Little  
Theatre Club, Neon Krypton Literary  
Society, Upper Grade Teachers' Council,  
Associate Editor of Eastern Progress,  
Art Editor of Milestone.

*"She walks in beauty like the night  
Of cloudless chimes and starry skies."*

VIOLA CECILIA HIGGINS

"Vi"

Pulaski, Ky.

Upper Grade Teachers' Council,  
*"Viola pleases us—she seeks that which  
is lasting, beautiful and real."*

MARY FROST WAITS

"Fostie"

Cynthiana, Ky.

Y. W. C. A., Herbartian Club,  
*"Here, too, dwells truth, an abundance of  
of sunshine and cheer."*





The MILESTONE '26



FRANCES CYNTHIA WINN

"Frank"

Danville, Ky.

Pianist of Horace Mann Literary Society,  
Madrigal Club, Treasurer and Pianist of  
Y. W. C. A.

*"Her friends—There are many,  
Her foes—Are there any?"*

JEANETTE DEARBORN

"Jean"

Butler, Ky.

Neon Krypton Literary Society, Cabinet  
member of Y. W. C. A., Madrigal Club.

*"By her smile she spreads sunshine, by  
her song she drives away care."*

MARIAN GERTRUDE CORBIN

"Marian"

Butler, Ky.

Neon Krypton Literary Society, Y. W. C.  
A.

*"The music in my heart I bore  
Long after it was heard no more."*

ELIZABETH EDITH RABOUSCH

"Bets"

La Salle, Illinois.

Y. W. C. A. Cabinet, Neon Krypton Liter-  
ary Society, Herbartian Club, Staff of  
Booster Club.

*"None but herself can be her paralell."*

DOROTHY B. McBRAYER

"Dot"

Lawrenceburg, Ky.

Little Theatre Club, Staff of Eastern Pro-  
gress, Secretary of Diploma Class,  
Herbartian Club.

*"Dot's a very friendly girl,  
And that, indeed is prudent;  
She's popular with her classmates,  
And she's an excellent student."*



The MILESTONE '26

NOEMI WHEELER MADDOX

"Nokie"

LaGrange, Ky.

Herbartian Club, Y. W. C. A., Horace  
Mann Literary Society.

*"Sweet promptings unto kindest deeds  
were in her every look."*

EDDYTH ELIZABETH JENNINGS

"Eddie"

Cynthiana, Ky.

Horace Mann Literary Society, Herbar-  
tain Club, Y. W. C. A.

*"A jolly word, a pleasant smile,  
She has them ready all the while."*

EPHRAIM MARTIN CAMPBELL

"Eaf"

Walden, Ky.

Y. M. C. A., Horace Mann Literary  
Society, Little Theatre Club.

*"A great man is made up of qualities  
that meet or make all occasions."*

MATTIE REDMOND

"Tilda Ann"

Lawrenceburg, Ky.

Madrigal Club, Herbartian Club,

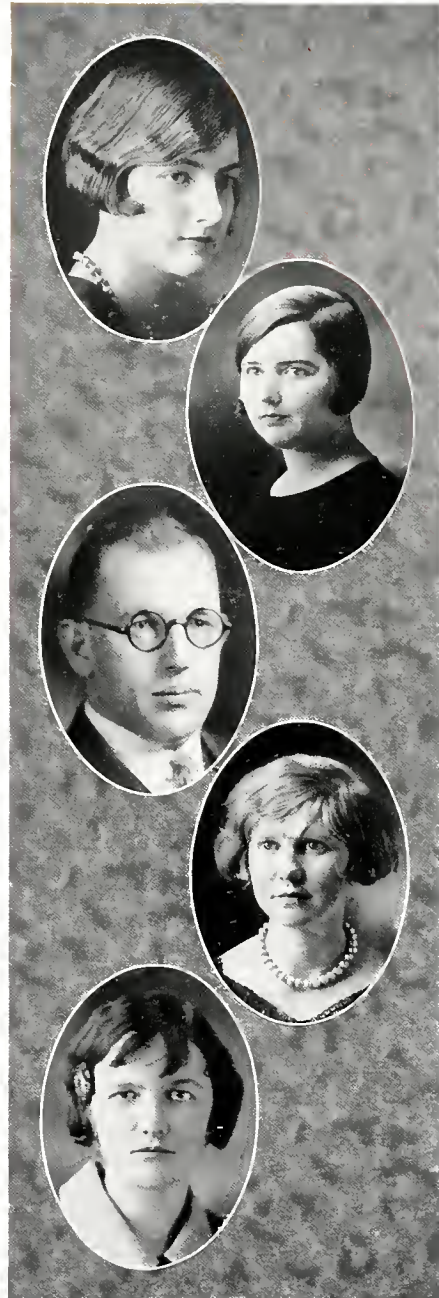
*"Men may live without knowledge,  
Men may live without books,  
But the most civilized men  
Can't live without cooks."*

SALLYE FLORENCE BROOKS

"Flo"

Booster Club, Upper Grade Teachers'  
Council, Y. W. C. A.

*"Do not grasp at the stars,  
But do life's common work as it comes"*



The MILESTONE '26



LELIA ELIZABETH McMURCHY

"Mac"

Harrodsburg, Ky.

Little Theatre Club, Madrigal Club,  
Upper Grade Teachers' Council, Progress  
Staff, Canterbury Club.

*"A little nonsense now and then  
Is relished by the wisest men."*

EUNICE BLANKINSHIP

"Eve"

Owenton, Ky.

*"A good disposition is more valuable  
than gold"*

WILLIAM HAIRLAND TUTTLE

"Duck"

Bardstown, Ky.

Basket Ball, Football, Base Ball, Neon  
Krypton Literary Society, Progress Staff.

*"On the foot ball field he sets a wicked  
pace,  
But, believe me, he's faster yet in Cupid's  
race."*

CLEMIE CLAY SUMMAY

"Summay"

Mt. Sterling, Ky.

Upper Grade Teachers' Council, Y. W.  
C. A.

*"O, blessed with temper whose unclouded  
ray,  
Can make to-morrow cheerful as to-day."*

LILLIAN ELSTON

"Bill"

Campellsburg, Ky.

Herbartian Club, Y. W. C. A.

*"So bonny and sweet, so fully complete  
She steals your affections away."*



LEANOR MAE BUTLER

"Butt"

Canton, Ohio.

Varsity Basket Ball '25, '26, Madrigal Club, Horace Mann Literary Society, Progress Staff, Milestone Staff.

*"Though Leanor's friends are numerous,  
She is not spoiled a bit;  
In student affairs she's prominent  
And in school has made a hit."*

EDITH McCAULEY

"Mickie"

Cynthiana, Ky.

Y. W. C. A., Horace Mann Literary Society, Neon Krypton Literary Society, Canterbury Club, Herbartian Club.

*"A true, good friend and jolly pal  
Whimsical, witty and wise;  
A lovable, playful active girl,  
Makes good at all she tries."*

THOMAS W. EVERSOLE

"Old Timer"

Cow Creek, Ky.

Field Sports, Tennis, Baseball, Neon Krypton Literary Society, Eastern Progress Staff, Rural Life Club, President of Diploma Class.

*"Faithful and earnest,  
Kind hearted and true,  
Ready to do his best  
In all there is to do."*

RUBY ELIZABETH VAN ARSDALE

"Brownie"

Harrodsburg, Ky.

Upper Grade Teachers' Council, Little Theatre Club, Y. W. C. A.

*"Sport, that wrinkled care derides,  
And laughter holding both his sides."*

IRENE THOMAS BROWN

"Irene"

Cropper, Ky.

Neon Krypton Literary Society, Upper Grade Teachers' Council, Y. W. C. A.

*"She is pretty to walk with,  
And witty to talk with  
And pleasant, too, to think on."*





The MILESTONE '26



RUTH ADAMS

"Jimmie"

Paintsville, Ky.

Herbartian Club, Neon Krypton Literary Society, Y. W. C. A., Orchestra.

*"Her very frowns are fairer than smiles."*

SALLYE FLORENCE LATHRAM

"Fanny"

Owingsville, Ky.

Cabinet of Y. W. C. A., Upper Grade Teachers' Council, Neon Krypton Literary Society.

*"The noblest mind the best contentment has."*

FLORIDA CUMMINS

"Flo"

Crab Orchard, Ky.

Y. W. C. A., Herbartian Club.

*"I love tranquil solitude*

*And such society*

*As is quiet, wise and good."*

ANNA LEE HEARN

"Zoie"

Wheatley, Ky.

Utopian, Literary Society, Neon Krypton Literary Society, Upper Grade Teachers' Council Y. W. C. A.

*"The best part of beauty, is that which no picture can express."*

IDA MARGARET OHNE

"Peggy"

Ghent, Ky.

Y. W. C. A. Booster Club, Periclesian Literary Society, Upper Grade Teachers' Council.

*"It must be conclusively proven before she will believe it."*

ANNA ELIZABETH LANE

"Ann"

Buena Vista, Ky.

Horace Mann Literary Society,  
Y. W. C. A. Upper Grade Teachers'  
Council.

*"A star of attraction, yet quite unassuming.*

*Of her might be said, without once  
presuming".*

FRANCES MAY

"Frances"

Gravel Switch, Ky.

Upper Grade Teachers' Council.

*"Happy am I, from care I am free  
Why aren't all people contented like me?"*

NANNIE MAY NAZOR

"Aunt Eppie"

Louisville, Ky.

Neon Krypton Literary Society, Upper  
Grade Teachers' Council, Y. W. C. A.

*"Truthful, steadfast, winsome, gay,  
Nannie goes her laughing way."*

MARY MARGARET RUPERT

"Margie"

Grayson, Ky.

Y. W. C. A., Madrigal Club.

*"Merry, vivacious, always smiling  
—Margie."*

EUNICE SWANER

"Sap"

London, Ky.

*"Very bright and lively,  
A good looking brunette;  
Entertaining, jovial,  
And full of fun, you bet."*





The MILESTONE '26



BEULAH MAY LEWIS

"Boo-boo"  
Wildie, Ky.

Herbartian Club.

*"A sunny temper gilds the edges of life's  
blackest cloud."*

DOVIE BLYTHE PARRISH

"Dave"

Richmond, Ky.

Secretary of Theatre Club, Upper Grade  
Teachers' Council.

*"Dovie is as winsome as she is capable,  
In fact, she's an all around girl."*

GEORGE THOMAS CATRON

"Red"

Cartwright, Kv.

Men's Club, Agricultural Club, Principals'  
Group.

*"Character is a perfectly educated will."*

ESTELLA MARGARET MARTIN

"Jake"

Denisonville, Ky.

Upper Grade Teachers' Council, Presi-  
dent of Madrigal Club, Y. W. C. A.,  
Neon Krypton Literary Society.

*"With her brush, she paints the world  
around her."*

MARY EMMA MIDDLETON

"Middy"

Hodgenville, Kv.

Upper Grade Teachers' Council, Booster  
Club, Y. W. C. A.

*"Of many charms to her as natural  
As sweetness to the flower."*



The MILESTONE '26

BESSIE BREWER

"Bess"

Gravel Switch, Ky.

Herbartian Club.

*"Rest well with doing well, and leaves  
others to talk of you as they please."*

PAULINE COLLINS

"Polly"

Wilmore, Ky.

Herbartian Club, Booster Club, Canter-  
bury Club, Y. W. C. A., Horace Mann  
Literary Society, Milestone Staff.

LILLIAN HAIL

"Jep"

Somerset, Ky.

Y. W. C. A., Horace Mann Literary  
Society, Herbartian Club.

*"A smile for all, a welcome glad,  
A jovial southern way she had."*

MARTHA IZORA MAUPIN

"Mod"

Albany, Ky.

Booster Club, Y. W. C. A., Upper Grade  
Teachers' Council, Horace Mann Literary  
Society '25.

*"A daughter of the gods, divinely tall,  
And most divinely fair."*

GERTRUDE KNOX GILBERT

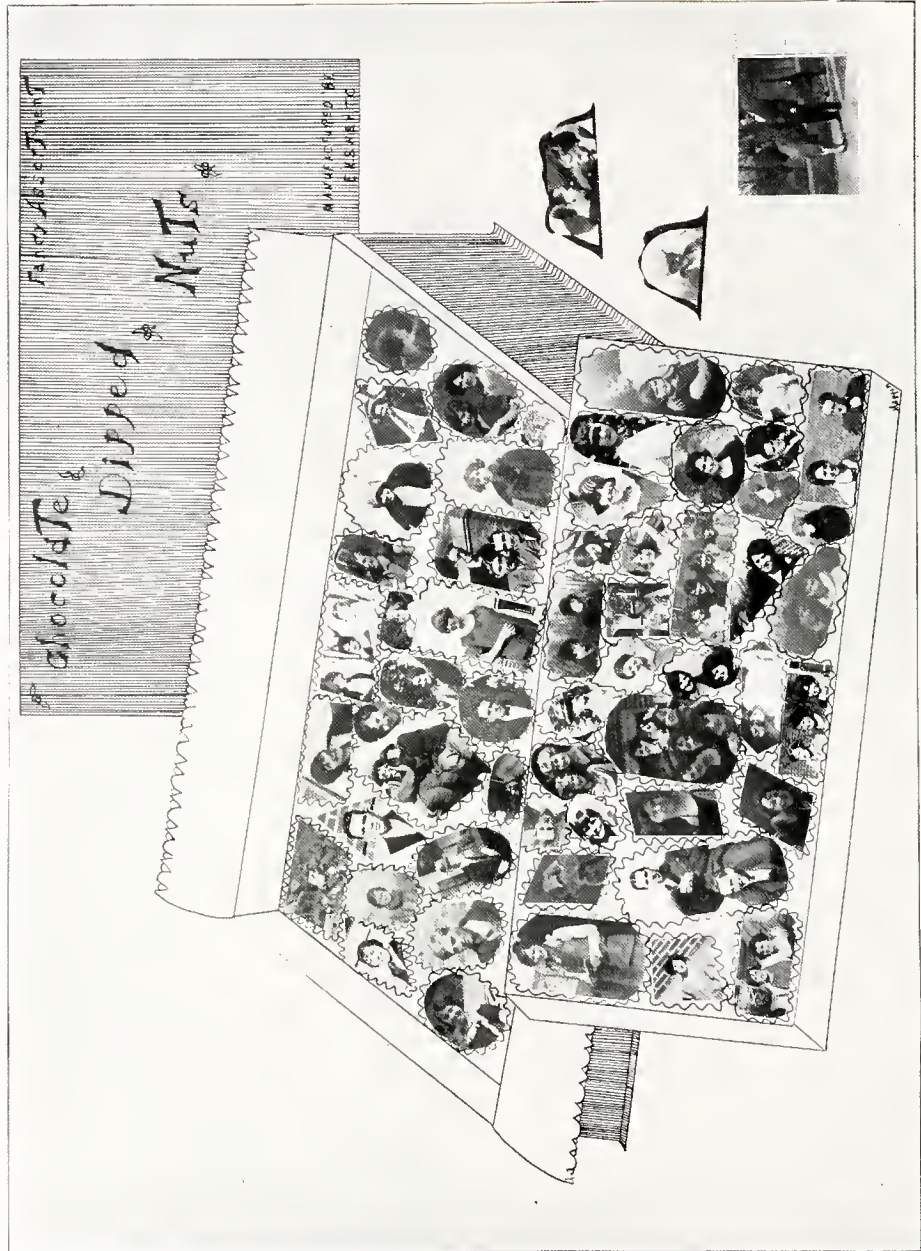
"Gib"

Winchester, Ky.

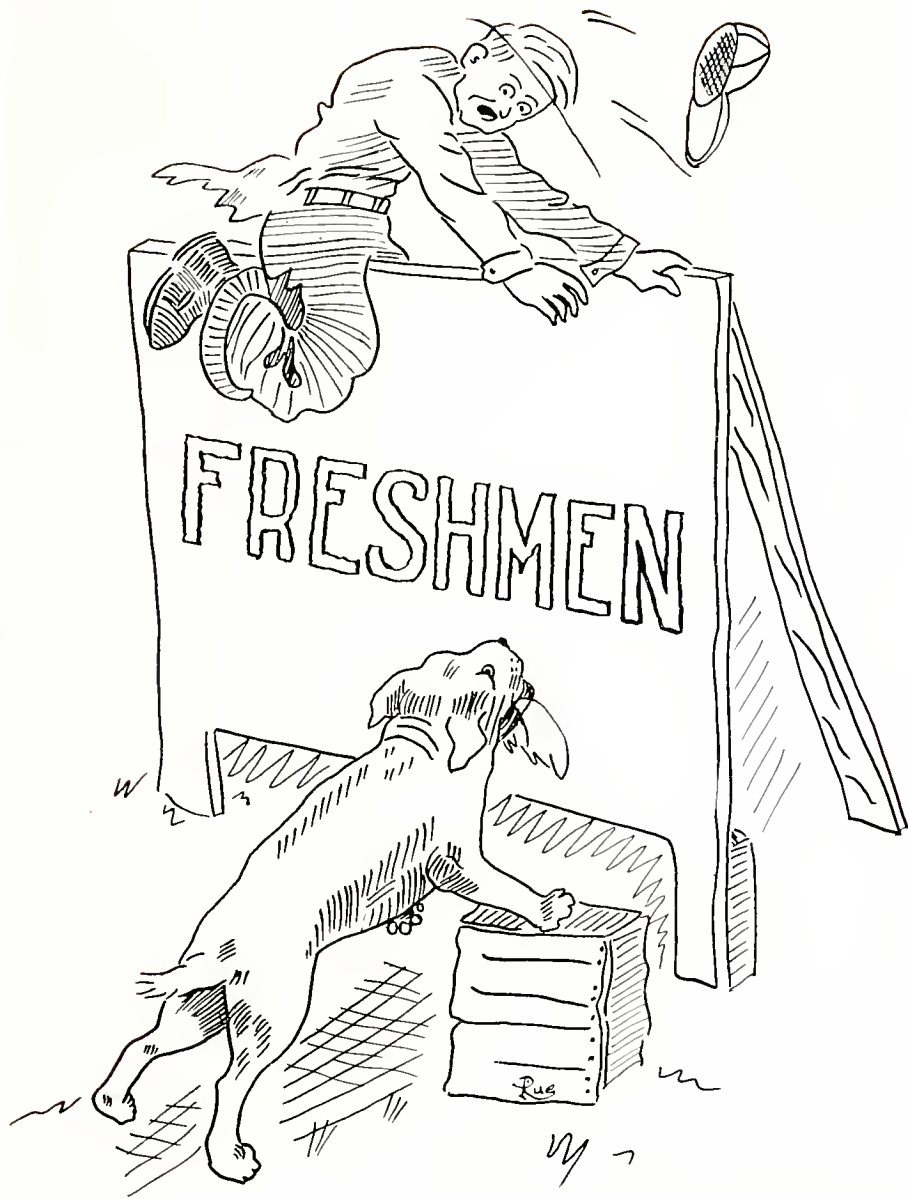
Horace Mann Literary Society, Upper  
Grade Teachers' Council.

*"She loves her own way,  
But her way is usually right."*













## The Freshmen

**T**HE Class of '30 started the year with a bang. The faculty advisor and class officers were elected with great enthusiasm. The President, Mr. Tarter, appointed a policy committee, which worked out the eight following policies: initiative, loyalty, constructiveness, promptness, co-operation and appreciation, business-like attitude and that class meetings should be educational and recreational. To carry out these policies eleven other committees were appointed.

The Scholarship Committee received the names of all students with low grades and worked with them individually to bring up their standing. As a result the Freshman Class had a smaller percentage of "F's" than any previous Freshman Class.

The Program Committee consisting of Miss Boyd, Miss Wendel and Mr. Adams, worked out many interesting programs for class meet-

## The MILESTONE '26



ings. These programs were successfully carried out and proved to be very constructive and enjoyable. Many of them dealt with Kentucky's contributions to history, literature and art. In addition to these class programs the Freshman Class contributed its share of the chapel programs, which were considered to be some of the best of the year.

The Orchestra Committee succeeded in getting up the only orchestra on the campus. Miss Henry and Miss Buck played the piano, Miss Bergen the drum, Miss Terril and Miss Dixon the violins, Mr. J. F. Mills the trombone and Mr. H. B. Mills the cornet. This group was organized with Miss Schneib as faculty advisor, Mr. Mills as president and Miss Terril as directress. Miss Dixon was secretary. They played only classical music, and were asked to play every Tuesday morning in chapel. Though they worked hard they had many pleasant dinner parties and surprises.

Another group was the campus committee, which encouraged a beautiful campus by many posters and short speeches in chapel.





Still others were the place, attendance, song, yell, usher and special talent committees. All twelve committees helped to make the class the best organization on the campus. They succeeded because the Freshman Class had originality and pep, which was shown by its unique class party and serving each member his share of iron in the form of raisins, at some of the class meetings. It showed its loyalty and co-operation to the school by choosing for its class banner the school colors. This banner was earned by the Freshman girls and presented to the class as a Christmas present. The class successfully carried through its business-like attitude by having a gavel, ushers and parliamentary law at all of its meetings.

Last but not least—Miss Schneib, the faculty advisor, was to the Freshman Class what the spark is to an engine. She was ever ready to give her valuable time and untiring energy to any activity that the class was interested in.





## Class Officers

### FIRST SEMESTER

Virgil Tartar

Aline Barbour

Jayne Bergen

Lorane Turnipseed

*President*

*Vice President*

*Secretary*

*Treasurer*

### SECOND SEMESTER

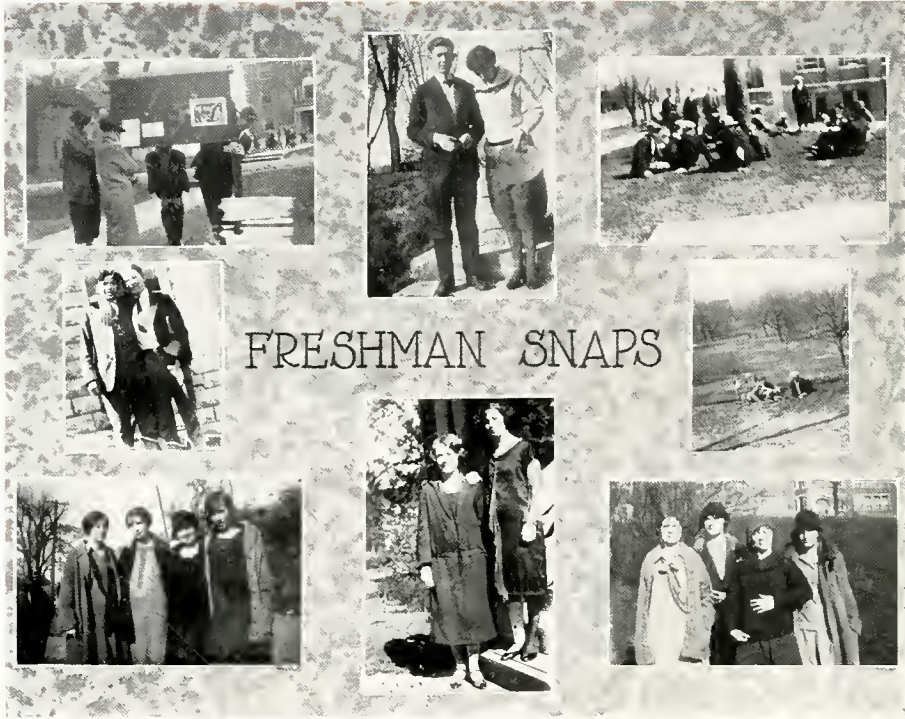
H. B. Mills

Charles Matherly

Tiny Dixon

Lucille Clark

Hats off to the executive board! It worked hard and faithful for the benefit of the class. It appointed many committees and worked with them to help make the freshmen the most original and energetic organization on the campus. The two class presidents are to be congratulated for the manner in which they helped "bring home the bacon" in the way of class spirit. Mr. Tarter was ever ready to sacrifice his own pleasure for the good of the class, while Mr. Mills carried out the original policies with great enthusiasm.



## “Freshie Wit”

Freshie (coming in late to a seventy-three class): “I’m late Professor, but I-I-I had to wash my neck and ears this morning. I swear it won’t happen again, sir.”

Mills (wanting to be up to date): “You are as sweet as the essence of sacharine.”

Miss Sale: “How dare you insult me?”

McCoy to roommate: “May I borrow your blue tie?”

Tarter: “Why the formality?”

McCoy: “I couldn’t find it.”

Beneath the moon Craft told his love  
The color left her cheeks  
But on the lapel of his coat  
It showed for many weeks.

Mr. Cox: “Why is chemistry like love?”

Ruby Ballard: “Because the lower the gas the greater the pressure.”

“Zula, why has Ownby no hair?”

“Because he thinks so much, my dear.”

“But why have you so much?”

“Because, Oh, go on away and study.”



# Normal School





## The Normal School

A SCHOOL FOR RURAL TEACHERS IS ONE OF KENTUCKY'S GREATEST ASSETS. THE NORMAL SCHOOL AT EASTERN REACHES THOUSANDS OF KENTUCKY'S BOYS AND GIRLS THROUGH THE MEDIUM OF TRAINED TEACHERS. EARNEST, DEVOTED, LOYAL TEACHERS COME AND GO THROUGH THE SCHOOL, YEAR AFTER YEAR, OUT INTO THE HILLS AND VALLEYS. EVERLASTING IS THE SPIRIT OF LOVE AND SACRIFICE ENGENDERED IN THE HEART OF THE NORMALITE. "HERE'S TO OLD EASTERN."

The MILESTONE '26





## Senior-Junior Normal Class

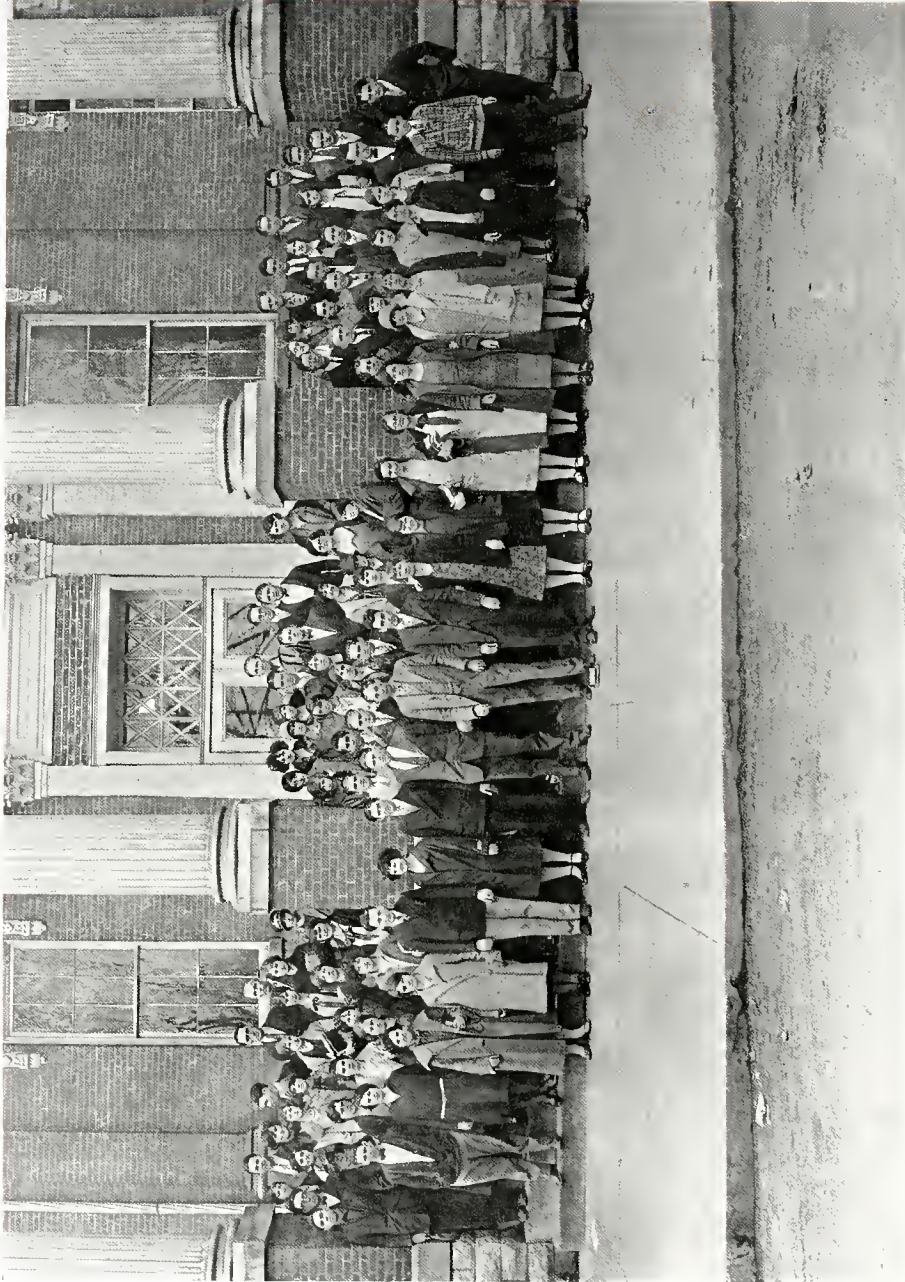


### OFFICERS

### Class Roll

Anderson, Ross	Deaton, Lula	Ingram, Maud	Roberts, Pearl
Applegate, Haley	Dunn, Juanita	Isaacs, Berla	Rose, Loel
Ayres, Celia	Driskell, Hazel	Jones, Helena	Ramsey, Sula
Baker, Sally	Dyer, Bennie	Jones, Joel	Roark, Roy
Baxter, Opal	Edwards, Everee	Jones, Sula	Rowland, Mae
Bradley, Gay	Ensor, Minnie Lee	Kindred, Clela	Shelton, Nannie
Bell, Nora	Flynn, Willie May	Koger, Mossy	Skaggs, Luther
Berryman, Katherine	Gilmore, Beatrice	Lawrence, Delia	Skaggs, Jerry
Berryman, Robert F.	Golden, Bertha	Lawson, Ollie	Sparks, Fannie
Bicknell, Ewey	Graham, Dorothy	Lloyd Arthur	Spencer, Nora
Brammer, Bessie	Hail, Gertrude	McCormick, W. D.	Stacey, James
Brock, Lucille	Hall, Charlie	Marcum, Virgil	Stratton, Garland
Eryant, Beulah	Hall, Elizabeth	Mercer, Flora	Taylor, Chester
Bryant, Thelma	Hamilton, Lloyd	May, Mary V.	Taylor, Charles
Bullock, Boyd	Hamilton, Thelma	Meeks, Thomas	Thompson Mildred
Calloway, Mary	Hammons, Colonel	Miracle, H. C.	Tudor, Mrs. Emma
Carroll, Ruby	Hayes, Mollie	Mollette, Amanda	Tyree, Mabel
Cawood, Will	Heaton, Leah	Mullins, Arlis	Wills, Margaret
Chaney, Gladys	Helton, Vina	Moore, Carolyn	Webb, Esther
Clifton, Margaret	Hildeband, Goldie	Moores, Nora	Weddle, Helen
Cosby, Roy	Hill, Gusta	Muncy, Clara	Withrow, Hellen
Cox, Bessie	Hill, Velma	Morgan, Oliver	Whistman, Thelma
Compton, Zelma	Holtzclaw, Emma	Owens, Sally	White, Mrs. Shelby
Craft, Hennie	Hoskins, Hobart	Patterson, Fay	Williams, Julia
Cunningham, Madge	Howard, Green	Patton, James	Waters, Milford
Creekmore, Homer	Howard, Lillian M.	Patton, Earl	Wilson, Audrey
Damron, Jewell	How: rd, Goldie	Redding, Mildred	Wilson, Wilma
Damron, Blanche	Howard, Willie	Rees, Riley A.	Wilson, Beulah
Davis, Edna Earle	Hubble, Faunice	Rees, Rupert	Wimburn, Elsie
Davis, Guthrie	Hunter, Zelia	Rice, Fannie May	Witt, Moss Gibson
Davis, Mary Catherine	Howard, Willie	Richardson, Harold	Young, Lenvia H.
ine	Hutchison, Virgie		Young, Nora

The MILESTONE '26





## Normal Sophomores

The fall of 1925 brought with it a small but unusually talented and ambitious band of young men and women to the Sophomore class. Many had been in the field for the first time contributing something of their knowledge back to the childhood of the Commonwealth. Never has there been a more earnest and enthusiastic group eager to advance in knowledge and as eager to go back to the places from whence they came and give more to the schools of the community. Realizing that it was professional training which all desired, it was decided that the class meetings would be devoted entirely to professional training. This accounts for the change in the class programs. Heretofore the meeting had been somewhat of social entertainments which were on the whole interesting but not as instructive as the members of the class felt that they should be.

The most interesting thing as well as the most instructive that the students who are preparing to be teachers can hear is the experiences of those who have taught and the advice which those persons can give. All the teachers were glad to help the aspiring young students as much as possible, so much so that nothing which might concern the school in the community was left out in the discussions. This course was taken the first semester.

There has been a change in organization since the beginning of the second semester. Heretofore the class has been organized as the class of students who are working for the provisional elementary certificates of the first class or the eight unit certificate. Each class did work that would most concern the certificate that it was working for. This gave the classes a distinct division because of the difference between the certificates. It was felt at the beginning of the semester that the Legislature would make a change in the certification law, and true enough it did. This gave the Normal students something new to think about.

When the new law goes into effect there will be but one certificate issued in the Normal School, the eight-unit certificate. All the normal students have the thing which they have been working for in common. This revealed the fact that more could be accomplished by working together. The class groups are still organized and there is still the class feeling but the Friday meetings are held in the gymnasium with all the classes present. This arrangement is very satisfactory and splendid work is being done.

The Sophomores outside of doing some real work along the line of preparing to make good teachers of themselves, are outstanding in activities. The class has a good representation in football, basket ball, and baseball. Many belong to the Roark Literary Society; some belong to the Little Theatre Club; and there is a fair representation on other various important committees.





## The Normal Freshmen

The normal freshmen of Eastern are modest in their demeanor, but have been doing things that count for the advancement of the school; and promise to be a live class in 1927. Our roll numbers over one hundred twenty members.

Mr. Burns has been a most loyal and helpful advisor, and we feel much of the credit for our success is due him, as well as our efficient officers, and especially our president, Mr. Denver Miniard.

The members of our class are very enthusiastic supporters of all athletics and other activities on the campus. One member of our class has won honors on the football field, also in debating.

We hope that our class will become one of the best and most useful that Eastern has ever produced.

## Class Roll

Adams, James H.	Damron, Garnett	Jones, Flora	Smith, Fuson
Adkins, Roxie	Damron, Ruth	Koger, Estill	Smith, Sidney
Arnett, Eliza	Denham, Virginia	Lawrence, Katie	Steele, Mossie
Baker, Dexter	Deering, Carrie	Lawson, Steve	Steele, Roscoe
Baker, Richard	Edwards, Herman	Lester, Olga	Stewart, Grace
Bates, Clarence	Ellington, Mrs. Hazel	Martin, Faye	Stewart, May
Belcher, G. P.	Farley, James G.	McGaffee, Morris	Stumbo, Nellie
Bell, Beckham	Feltner, Dora	McKinney, Arthur	Tapp, Mrs. Dolly
Bennett, Ulyses	Fields, W. G.	Meadors, Clayton	Taylor, Lula C.
Berryman, Audrey	Foster, Axie	Mills, Ennis	Taylor, Ray
Blankenship, Grace	Fortney, Myrtle	Miniard, Denver	Taylor, Ruby
Blankenship, Malta	Frey, Edna	Montgomery, Eddie	Thomas, Kenneth
Brewer, Clyda	Frey, Lucy	Muse, Glenn	Thompson, Oppie
Brewer, George	Gentry, Lonie	Nelson, Frances	Troxel, Dillie
Burnett, Ruby	Green, Faye	Noel, James	Troxel, Frances
Burton, Anna	Griffin, Cordelia	Norton, Myrtle	Thornbury, Berta
Caines, Mexie	Griffin, Mattie	Phillips, Erwin	Tye, Bessie
Calvert, Harold	Hager, Mabel	Potter, Leona	Tye, Dessie
Campbell, May	Hall, Edgar	Powers, Hazel	Watson, Ruby
Carter, Nannie	Hall, Ernest	Prather, Elva	Webb, De Niza
Childers, Aey	Hall, Lawrence	Reynolds, Eric	White, George
Childers, Marvin	Hamilton, Myrtle	Reynolds, Sillar	White, Gleala
Church, Zelma	Hamilton, Virgil	Rice, Grace	Wilder, Lloyd
Clay, Jimmie	Hamilton, Myrtle	Richardson, Ruby	Wilson, Cloyd
Clemons, Ethel	Hatfield, Geneva	Roberts, Lucy	Wilson, Nannie
Clemons, Laura	Hendricks, Virgie	Robinette, Orville	Winchester, Mrs. W.
Collins, Augusta	Mae	Rowe, J. H.	R.
Cooley, Mabel	Howard, Lucille	Salisbury, Tommy	Worrell, Edna Lee
Cornett, Cecil	Johnson, Nora	Sebastian, Shelby	Worrell, Mary B.
Cress, Edd	Jones, Katherine	Sheppard, Lula	Wright, Charlie
Dale, Ray	Jones, Cecil B.	Smith, Frances	





UNIVERSITY HALL





# Sports



## Athletics at Eastern

The control of athletics in Eastern has been delegated by the Regents to the Athletic Committee. This committee is selected by the president and is made up of faculty members who, from previous experiences are specially fitted to supervise athletic activities. All necessary rules and regulations governing eligibility of students are made by this committee. The scheduling of interscholastic games is also under control of the committee.

Under the present plan athletics are on a very high plane and the teams representing the school in interscholastic matches are made up of the best men and women of the student body.

Eastern, since becoming a four year college, is rapidly making a place for herself in the athletic world. In match games with older institutions she has acquitted herself in a most creditable manner. Steps are being taken to secure membership in some one of the bigger associations and when this is accomplished, Eastern's standing among the colleges and universities will be beyond question.

The Athletic Committee is at present composed of the following:

A. B. Carter, *Chairman*  
C. A. Keith  
George Hembree  
Smith Park  
Hortense Lewis



## Baseball

During the season of 1925 the Maroon baseball team was not so successful as teams of the past seasons and dropped eight of its twelve scheduled games by narrow margins in each instance indicating the determined fight which was characteristic of the nine. In the games played during the entire season the Eastern tally, or that of her opponents did not reach two digits, which is evidence of the fact that only "airtight" ball was played and that the games bore no resemblance to a track meet.

The "jinx" which pursued the Maroons throughout the season was largely due to injuries of members on the team. Harvey Hayes, star twirler, wrenched his shoulder badly when he threw his first ball in one of the games and was out for several weeks. Captain Stone fell and sustained a sprained shoulder when he made a healthy stab at a hard-hit fly. This left his berth at center field to be filled by a second string man. Other minor injuries to players greatly weakened the team during the season and impeded the functioning of the team as a unit.

As usual the college season was badly cluttered up by rain and wet weather. One game with Kentucky Wesleyan College being postponed four times before it was finally played and then on a field of mud. Few notable events occurred to break the monotony of the season. Joe Gay, stellar slugger in practice finally made connection with the horsehide in a game, knocking it almost to Roark Hall and slid safely into second base. Lemon an all-southern end in football while on the Centre College eleven, and who was also a member of the baseball team of that institution had the misfortune to break his leg when he slid into third base on the local diamond in a game which Eastern captured by a score of 2 to 0.

The locals were regarded as one of the best fielding teams in this section but were woefully weak at hitting. The team as a whole may be referred to as the "hitless wonders" and were very slow to hit the pill. This accounts for the small scores as well as the small number of Maroon victories. Only three of the nine players batted .300 and better. Mainous lead the clouters with .380; Stone came second with .348; while Dooley batted a little better than the .300 mark.

The Maroons were without a general during the middle of the season while Captain Stone was out on account of an injured shoulder. They closed the season with a 3 to 1 victory over the Pioneers of Transylvania College on the local diamond. The hitting was done principally by Mainous, Stone and Dooley while the fielding during the season in the infield was borne by Moberly at third base and by Stacy at left in the outfield. The locals scored 33 runs while their opponents piled up 43 runs in the twelve games played.

Harvey Hayes was the principal twirler for Eastern after he had recovered from his injury in the shoulder and the effect of his slants and speed is evidenced by the shut-out game of 2 to 0 over Centre College, played at Richmond when the Maroon "pitching ace" turned back the Colonels scoreless allowing them only three singles. Dooley and Stevens, other members of the Maroon pitching staff, proved their ability when called to the mound and did credit to themselves.

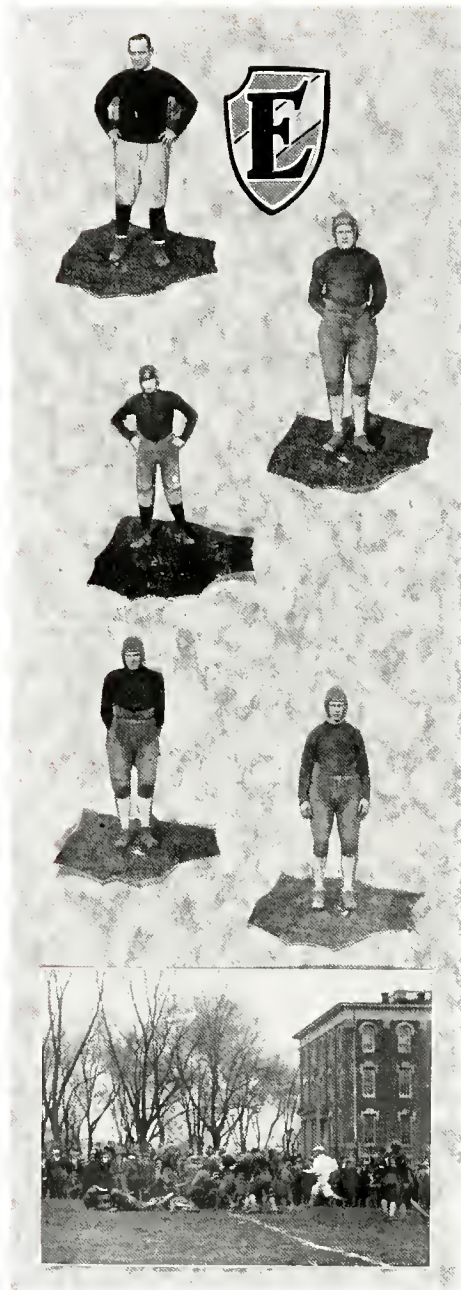
The main battery for Eastern was composed of Hayes and Mainous while Hampton, Gay, and Moberly held the first, second and third bags respectively. McDaniels was a whirlwind at short but slackened his pace during the last of the season. Stacy was stationed in left field, Captain Stone at center and the right field position was disputed by five fitting candidates. There was hot competition for this position between Higgins, Mayc, Hensley, Tudor and Dooley, all of whom did their share of felling. One of these men was shifted to center field while Stone was out of the game due to injuries. Other good material on the reserve list of available substitutes included Jones, Tuttle, McDougle, Combs, Crace, Martin, Vinson and Maggard.



## Season's Results

Eastern	1	Georgetown College	2
Eastern	2	Centre College	0
Eastern	4	Morehead Normal School	5
Eastern	4	Transylvania College	7
Eastern	2	Kentucky Wesleyan College	5
Eastern	2	Lincoln Memorial University	7
Eastern	3	Centre College	5
Eastern	1	Kentucky Wesleyan College	2
Eastern	4	Lincoln Memorial University	3
Eastern	2	Georgetown College	3
Eastern	4	Western Teachers College	3
Eastern	3	Transylvania College	1





## Football

The Maroon eleven experienced its best season in 1925 playing the stiffest schedule in the history of the school and breaking even in the seven encounters, tying one, winning three and losing three. Notwithstanding the fact that the victories were comparatively small, many have expressed the opinion that the team was very successful in its first real card, scoring 142 points to its opponents 41. Then to, the rating of the schools carried in 1925 was far superior to that usually making up the Maroon card and the debut into football circles with the foremost colleges in the central part of the state is predicted to be of unestimable value to the school in many ways.

Handicapped by the fact that their hardest games were the earliest on the card, the Maroons did well and made creditable showing in each of the games. There is no doubt to those who wit-



nessed a majority of the contests that the Maroons emerged from each game with marked improvement and that at the close of the season were in such condition as to give practically any team a good run for their money. In fact the Transylvania Pioneers famed as one of the State's strongest elevens, were amazed at the stubbornness of the Maroons during a clash in Lexington near the close of the season when the locals lost by one point after determined efforts were displayed.

Captain Becham Combs, luminary tackle, was the star of the Maroons in the line, and his savage fight and pluck even undaunted by defeat, lead the Maroons to a successful close. At the pivot position Captain-elect Alford of the 1927 eleven was equally alert and was given an honorable mention by coaches choosing the mythical all-central Kentucky college eleven.

The scorers were lead by Gentry who did most of the ball "toting" and col-



## The MILESTONE '26



lected 52 points during the season with seven touchdowns and ten kicks from placement following touchdowns. He was fleet of foot, having sufficient momentum to carry on and was equally skilled with his "toe." Stone, quarterback, came second with 27 points, four touchdowns and scoring three extra points. Moberly, Jones and Crutcher each scored two touchdowns, the latter adding one extra point with a drop kick. Other active scorers include Captain Combs, Hurst, Tuttle and Hacker who each scored a touchdown and the latter two with an additional point apiece for an extra point after the touchdown.

The longest run of the season in any Maroon game was made by Gentry, who raced eighty yards thru a broken field after breaking through the line of scrimmage and side-stepping, eluding, dodging, and shaking off several tacklers for a score against the Morehead Normal School eleven in a game on the local grid which was copped by the

Maroons 67 to 0. Hurst made the second longest run in the same game when he intercepted a forward pass and ran seventy-five yards for the final counter of the game.

The Eastern schedule consisting of seven games was begun October 12 at Richmond with a game with the University of Kentucky freshmen which was lost. However the freshmen did not get over the effects of the game throughout the season as three of their best men were injured. The game with Union College at Richmond on Turkey Day morning which was an easy victory for the locals closed the season.

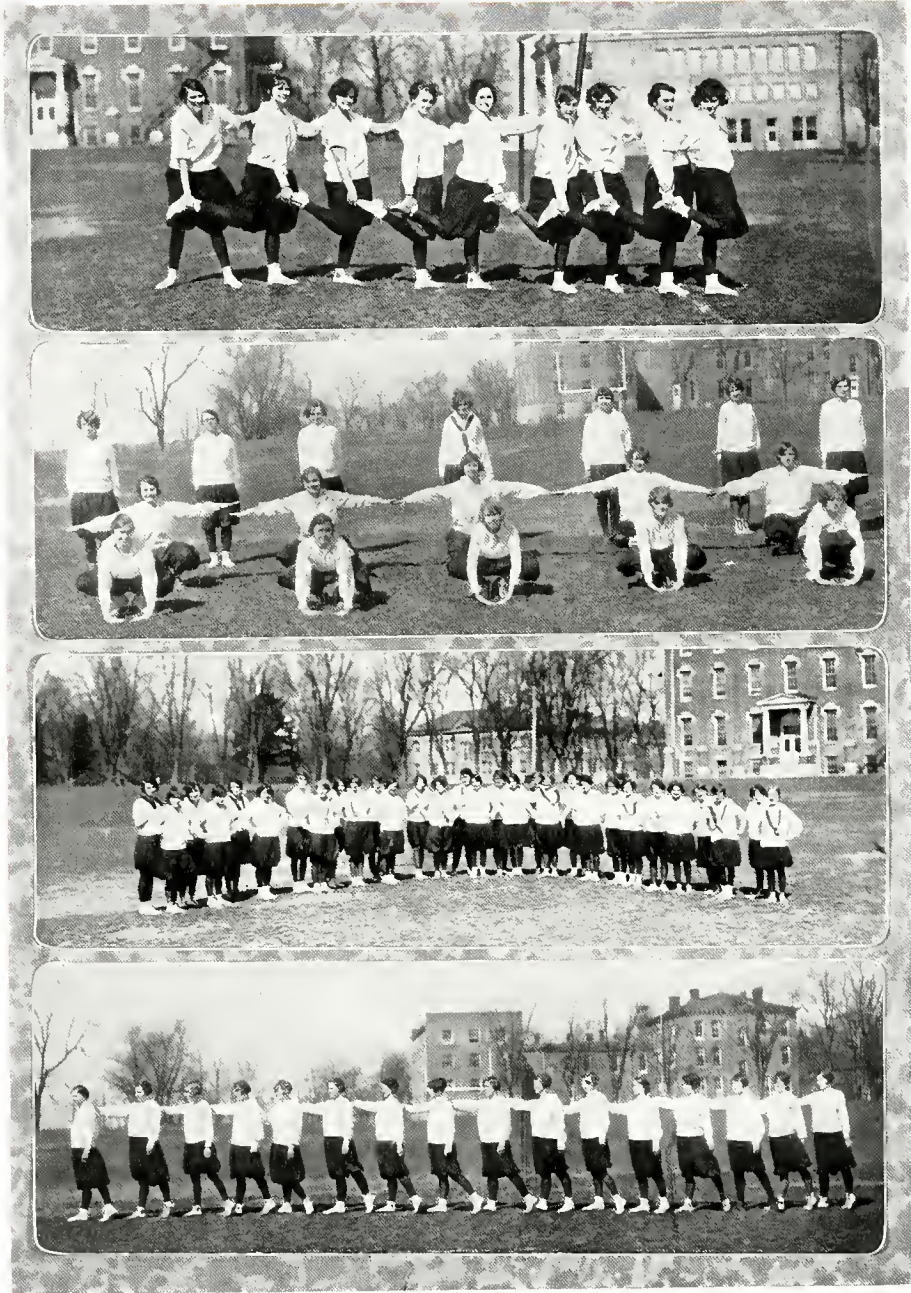
SEASON'S RESULTS

Eastern	0	Univ. of Ky. Frosh	14
Eastern	7	Georgetown	13
Eastern	0	Lincoln Memorial Inst	0
Eastern	13	St. Marys College	7
Eastern	6	Transylvania	7
Eastern	67	Morehead	0
Eastern	49	Union College	0





The MILESTONE '26



PHYSICAL EDUCATION CLASSES





PHYSICAL EDUCATION CLASSES



## Season's Results

Eastern	28	Sue Bennet Memorial School	6
Eastern	18	Kentucky Wesleyan College	21
Eastern	24	Cumberland College	6
Eastern	17	Kentucky Wesleyan College	12
Eastern	17	University of Louisville	20
Eastern	28	Union College	7
Eastern	18	Georgetown College	28
Eastern	18	Cumberland College	2
Eastern	23	University of Louisville	11
Eastern	34	Louisville Normal School	5
Eastern	24	Transylvania College	23
Eastern	15	Georgetown College	27
Eastern	25	Transylvania College	7



## Girls' Basketball

Closing a very successful season the Eastern co-eds dropped their final game by a score of 27 to 15 to the Georgetown Tigerettes February 27, at the Scott County capitol, by virtue of which the state girls net title was annexed to the Georgetown College five. With equal records and with the advantage of playing on their home court the Tigerettes won the encounter which decided which of the two teams would concede the 1926 state honors. The local girls were a close second and made every effort to repeat last season's performance of taking the undisputed championship of the entire state.

Recognized as one of the strongest quintets in the state the Eastern girls won nine out of the thirteen games played and were thrown out of the race for the penant at the last stage only by Georgetown College who handed them defeat in both of the season's encounters. Besides losing twice to Georgetown, one game was dropped to the University of Louisville net team and the team of Kentucky Wesleyan College. Both were played on foreign courts and lost by narrow margins. The locals amassed a total of 289 points during the season while their opponents could only gather 175.

Miss Lucille Clark, luminary forward, lead the Eastern scorers with 144 points which is the largest number ever registered by any former Eastern player and is probably unexcelled in the state. Captain Leonor Butler, who battled in every game of the season at center came second with 83 points, while Scanlon, a regular forward collected 29 points. Miss Elsie Evans who hailed from Danville the second semester and who played an exceptional floor game when she substituted at forward, rung up 9 points, while Frazier and Hickman, other reserve forwards emerged from the season with eight points each.

Much credit for the team's success during the season was due to its guards who worked well and untiringly, greatly jeopardizing their opponents scoring chances. Misses Mauney and Waggoner bore the brunt of the opposing marksmen and their guarding was very commendable. The former was a member of the previous year's team which won the undisputed state title and was selected by various sport writers in Central Kentucky as all-state guard. It was Miss Waggoner's first year at Eastern but she made good use of her high school experience and developed into a first rate guard.

Countless substitutes which formed a wealth of material were held in reserve and performed creditably when called into action by Coach Hembree. These include Evans, Frazier, Knox, Lorance, Perkins, Hickman, Graham and Noland. The entire squad and Coach Hembree worked diligently to perfect a team to race for state honors, but it lagged at the crucial moment and the title was snatched from them.

Besides losing four games, two to Georgetown College and one to Kentucky Wesleyan College and one to the University of Louisville, the Eastern girls met and defeated some of the foremost teams in the state. Their victims include the Sue Bennett Memorial School, Union College, Louisville Normal School, Transylvania College, Cumberland College, Kentucky Wesleyan College and the University of Louisville.

This was the fourth consecutive year that the Eastern co-eds have been in the running for state honors, having captured the title in 1925. Prospects are that they will have another strong team in the field next year as several of the regulars have signified their intention of returning next fall.

## Boys' Basketball

Pursued by a relentless "jinx" the Maroon net team of the Eastern Teachers College had a very unsuccessful season in 1926, winning one game by one point out of the twelve games played. However, they showed flashes of form and fight which really did credit to the work of Coach Hembree but none were of such length as to be of much consequence.

Playing only first class teams, they rallied several times when it seemed as if they were to win an important encounter only to be turned back by some trick of fate, and succeeded in handing Union College a 24 to 23 defeat on the local court which was the season's only victory.

The Maroon boys who scored 239 points as compared with 403 for their opponents, were lead by Captain Stone at forward who registered 106 points. Next came Jones, a forward, who collected 68 points. Hensley accounted for 35 points and Triplett, elongated center, rung up 17 points. Several second string men used in many of the games were active scorers.

The brunt of the Maroon defense was borne by Becham Combs, stellar back guard, who not only favorably compared with all other guards appearing during the season on the local court but caged three field goals during the season. Combs covered himself with glory in all of the games and held down the opponent's score forcing the marksmen to fire from behind the foul line. As is evidenced by the individual scores, Stone and Jones, were the important cogs in the local scoring machine.

During the month of December a class tournament to which varsity candidates were eligible, was held and consequently no varsity practice was held until the students returned from the Christmas holidays. With only four days' practice the Maroons met the net team from Sue Bennett Memorial in the opening game on the local court January 8, and were defeated 36 to 27. The early defeat had disastrous effects on the team and the "jinx" followed thru out the season.

The second string men who saw active service during the season include Martin, Clouse, Gentry, Howard, Douds, Word, Hurst, Tuttle and Saufley. The teams carried on the 1926 card include two games each with Georgetown College, Transylvania College, Union College, Cumberland College, Berea College, and one with Sue Bennet Memorial School, and one with the Paris Athletic Club.

No satisfactory reasons have been given why the boys' team failed in 1926, nor why it does not usually have as successful a season as the girls' team. Certainly they have a capable coach, plenty of available material and a nucleus for moulding a successful combination. While for the last four years the girls have had very successful seasons the boys have been shipwrecked by fate. Each year the Coach, Hembree, has worked hard, long and diligently both for the team and for the future, but has met only with discouragement. It is predicted that the Eastern boys will put a good team into the field next season if such indications as determination, interest, hard work, plenty of material, and an early beginning can be judged as criteria for a successful combination. Fans predict that if it is possible for Eastern to have a good boys' team, it will be accomplished in 1927.





## Season's Results

Eastern	27	Sue Bennet Memorial School	36
Eastern	16	Transylvania College	29
Eastern	23	Georgetown College	35
Eastern	15	Paris Athletic Club	24
Eastern	23	Cumberland College	37
Eastern	12	Berea College	50
Eastern	20	Georgetown College	42
Eastern	24	Union College	23
Eastern	24	Union College	33
Eastern	20	Cumberland College	25
Eastern	24	Transylvania College	35
Eastern	11	Berea College	34







# Organizations





# OPEN FORUM



ANNA A. SCHNEIB  
ADVISOR



FLO FUSON EDWARDS  
VICE-PRESIDENT



JUDSON HARMON  
PRESIDENT



ELDRIDGE ADAMS  
SECRETARY-  
TREASURER



KATHERINE YAGER



VIRGINIA ROUTT



MARY EWALT CLAY



ORVILLE PRICE

Eastern Teachers College has the distinctive honor of being the only school in the state having an Open Forum. This is the only organization on the campus which has the unique position of having as its membership every student of the institution.

The second year of the Open Forum is marked with success. In addition to thinking out and executing constructive measures for the school, it has been responsible for the Tuesdays chapels. The Tuesdays chapels this year have not been a repetition of class meetings, literary societies, or cheap vaudeville, but they have been educational and inspirational and have been especially noted for the dignified atmosphere which has prevailed.

In addition to being responsible for Tuesdays chapels, the Open Forum committee has completed three of the plans launched by last years Open Forum committee, namely, improving the College auditorium stage, sponsoring an art exhibit, and creating interest in keeping our campus beautiful. It has also been responsible for the ushering at all public gatherings during the second semester; also for launching a "Go to College Drive." Plans have been made for increasing the student loan fund and for leaving a memorial to the college library.

The representatives of this organization are: Judson Harmon, President; Flo Evans, Vice-President; Eldred Adams, Secretary and Treasurer; Miss Schneib, Orville Price, Virginia Routt, Katherine Yager, and Mary Ewalt Clay.

The faculty and student body are most grateful to the charter members who launched the work of this committee. These members are Elizabeth North, President; Roscoe Dalton, Vice President; Mrs. C. Lusby Talbott, Secretary and Treasurer; Mary Floyd, Virginia Routt, Miss Schneib, E. C. Mullins and Clayton Mainous.

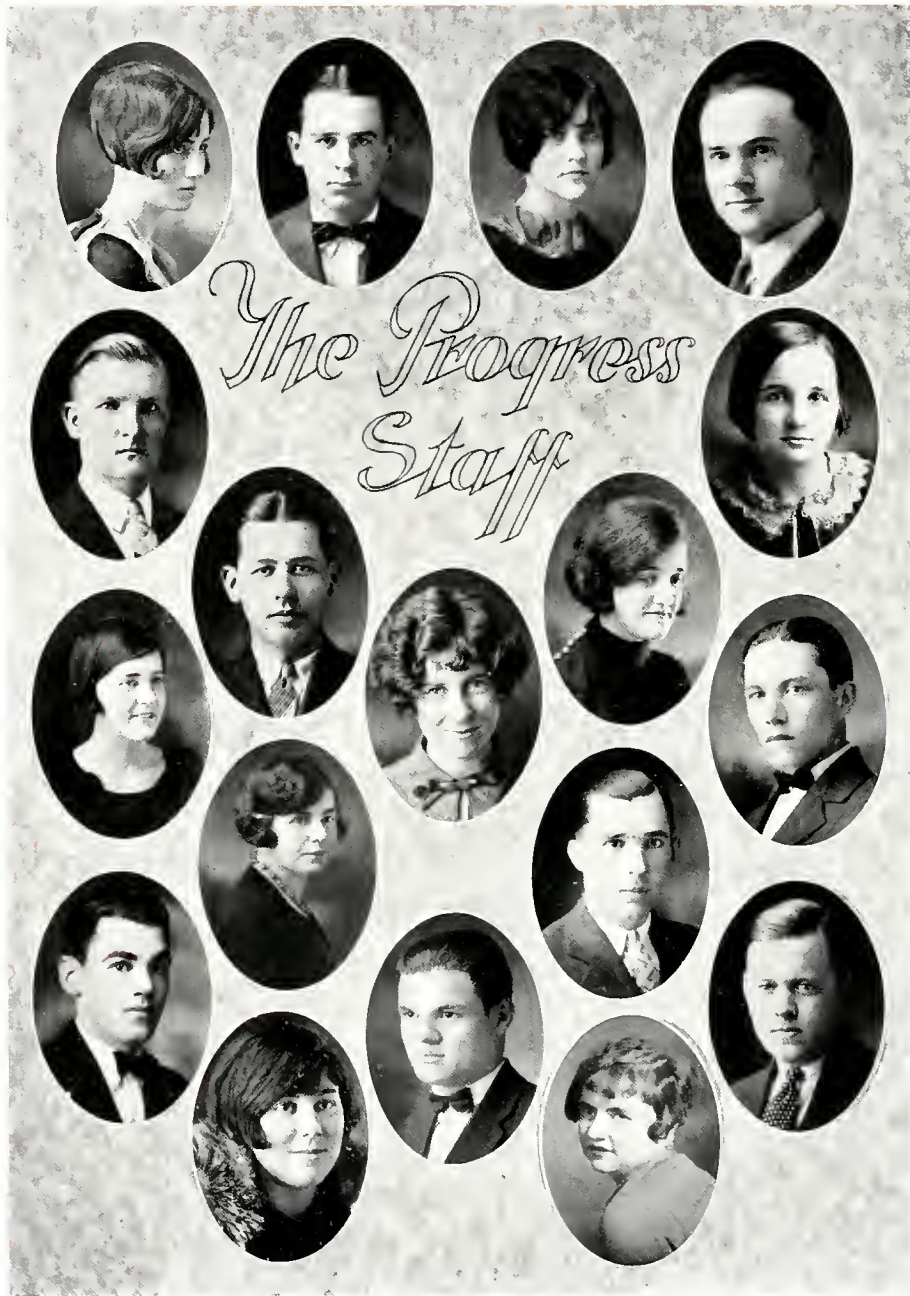




## The Milestone Staff

ORVILLE PRICE	<i>Editor</i>
EVA SMITH	<i>Associate Editor</i>
SARAH ARBUCKLE	<i>Literary Editor</i>
MILDRED RUE	<i>Art Editor</i>
MARSHALL HURST	<i>Art Editor</i>
DORLAND COATES	<i>Business Manager</i>
BERNARD ALFORD	<i>Snap Shot Editor</i>
LOUISE RAINES	<i>Snap shot Editor</i>
JOHN D. GOODLOE	<i>Sport Editor</i>
LEANOR BUTLER	<i>Sport Editor</i>
N. G. DENISTON	<i>Faculty Advisor</i>





## The Progress Staff

ROBERT T. ADKINS	Editor
VIRGIL K. TARTER	Associate Editor
LORINE TURNIPSEED	Associate Editor
JOHN GOODLOE	Sports Editor
MARION MCDUGLE	News Editor
WILLIAM TUTTLE	Business Manager
BERNARD ALFORD	Advertising Manager
BATSON MILLS	Assistant Business Manager
DORLAND COATES	Assistant Manager
JUDSON HARMON	Alumni Reporter
LYDA BALES	Exchange Editor
DOROTHY McBRAVER	Joke Editor
PROFESSOR TAPP	Faculty Advisor

### Reporters

Mildred Redding	Earl Jones
Tiny Dixon	Thomas Eversole
Lelia McMurchy	Isabell Sugg
Mary E. Clay	Catherine Yager

Roy Cosby



## Little Theatre Club

Almost six years have elapsed since a few of the students realized that there was a great deal of histrionic ability at Eastern, and that there was great need for a cultural organization through which these various emotions might be expressed. As a result of this need the little Theatre Club was organized.

During these years the club has grown rapidly in numbers, achievements, aspirations and hopes. It has traded in almost every human emotion to a great-



er or less degree. It has held the mirror up to every phase of nature which could be reflected on the stage.

In endeavoring to present true pictures of life the Little Theatre Club has adhered to true art in that it has portrayed the horrible as well as the beautiful. Velasquez's pictures of dwarfs and degenerate princes are equally as artistic as Raphaels Madonnas. Shakespeare is as successful artistically in his declination of Lady Macbeth as of Desdemona.

Dramatic art possesses an added advantage and appeal over many of the other arts. We think



The MILESTONE '26



in terms of language more or less vaguely; when we embody thought in definite language we first realize its full value ourselves, and can impart it to others. It is then we know the value of being impressed and making our impressions permanent both for ourselves and others. We know that impressions and expressions are inseparable.

In the Little Theatre there is an opportunity for each member to display any talent that he may possess, either as an actor, designer, costumer, or creator of stage and lighting effects.



During the past year the Little Theatre Club has been indeed fortunate to have numbered among its numbers such various types of histrionic ability. The "Yuletide" production—"The Xmas Spirit" was one of artistic beauty and gracefulness. Although this club was not organized for mercenary gains, yet the proceeds of this play enabled the club to have a share toward the hospital funds.

The last production of the year was the clever comedy "The Maneuvers of Jane," which was being coached by our most talented and able director—Miss Buchannan.





The MILESTONE '26



## Roark Literary Society



### OFFICERS

HAMBLETON TAPP

*Advisor*

BOYD BULLOCK

*Vice President*

EARL PATTON

*Sgt. at Arms*

VIRGINIA HUTCHINSON

*Secretary*

JOEL M. JONES

*President*

Throughout the year the Roark Literary Society has shown fighting spirit in all its undertakings. The loyalty, the oneness of thought, and singleness of aim that has characterized its members during the year have hereto been unrivaled and unequaled on the campus at Eastern. Many accomplishments of a constructive nature have been completed, and the various attainments of the society have made it secure in its position as the best society Eastern affords. It is with pleasure that we pass our accomplishments along to future Roarkians, and it is our desire and belief that our society will continue to go forward in the future as in the past—a successful and dominant factor at Eastern.



The MILESTONE '26





## Y. W. C. A. Officers

Ida Andrews	<i>President</i>
Dulcie Boyd	<i>Vice President</i>
Bessie Wright	<i>Treasurer</i>
May Kenney	<i>Secretary</i>





### Horace Mann Literary Society

The students of the Eastern Teachers College met on Thursday October 19, 1922 and formed the Horace Mann Literary Society. Each year since that time the society has been functioning and has shown great improvements.

On the first evening of October the society met to reorganize for the school year beginning September, 21, 1925. It held to the same purpose that had been handed down from year to year which was to develop its members along literary, musical, and dramatic lines. President Coates gave the society the privilege of functioning with or without a faculty advisor. But the society feeling it might need some assistance from the faculty, selected Mr. M. R. Sullivan, who has proven a very efficient advisor.

The society has not spent all of its time in work but has at times turned back the wheel of time to the exuberance of youth and to forget the worries that strenuous college life brings about. Though practically a new organization as compared with some, we believe in it and will as we return, try to raise it to a plane where its service will be most valuable.



## The Madrigal Club

JOHN ORR STEWART, JR., Director      ESTELLA M. MARTIN, President  
MARY MARGARET RICHER, Secretary  
BROWN E. TELFORD, Accompanist      MARY ETHEL ROBINSON, Librarian  
AUDREY BUCK, Scribe

### Members

Bryant, Beulah	Little, Mattie
Crane, Chloe	McMurphy, Lealia
Coger, Edna	Meyers, Lorayne
Campbell, Ella Mae	Mass, Alice
Clay, Mary Ewalt	Peele, Emily
Clark, Mabel	Redmond, Mattie
Cornett, Mae	Ross, Emma B.
Dixon, Tiny	Springate, Edna
Gott, Leona	Southwood, Elsie
Grey, Edriola	Soper, Francis
Herbst, Isabelle	Spillman, Elizabeth
Jordon, Vivian	Tarkington, Susan





## Neon Krypton Literary Society

RUTH ELIZABETH FUGITT, President  
 NANNIE NAZOR, Vice President  
 NANCY WHITE, Secretary  
 ALMA BRAVARD, Corresponding Secretary  
 MABEL HARMON, Treasurer

JUDSON HARMON, Parliamentarian  
 HELEN WENDEL, Chaplain  
 THOMAS EVERSOLE, Sergeant-at-Arms  
 RUTH KNORR, Choister  
 IRENE BROWN, Accompanist  
 TINY DIXON, Yell Leader

### Members

Virginia Rutt  
 Edith McCauley  
 Shirley Galbreath  
 Esther Elliot  
 Laura Humble  
 Katherine Yager  
 Pauline Simmons  
 Marie Petit  
 Mae Kinney  
 Vivie Sloan  
 Judson Harmon  
 Ruth Adams  
 Alice Young  
 William Tuttle  
 Mabel Elliott  
 Martha Harris

Elizabeth North  
 Elizabeth Owens  
 Bettie Sexton  
 Mildred Rue  
 Rubey Baker  
 Isabel Herbst  
 Eva Smith  
 Maud Dennis  
 Lena Lane  
 Mildred Scott  
 Mrs. Judson Harmon  
 Mary Frost Waits  
 Angie Rose  
 Hazel Walden  
 Jeanette Dearborn  
 Carmen Daniel

Lillian Wells  
 Estelle Martin  
 Susan Helm  
 Dovie McFarland  
 Russel Alexander  
 Vivian Jordan  
 Bernice Daniels  
 Grace Martin  
 Margaret Rupert  
 Raymond Alexander  
 Ruby Ballard  
 Josephine Stevens  
 Jessie Mae Hammack  
 Bernard Alford  
 Marian Corline  
 Lorraine Meyers

## Eastern's Calendar

### SEPTEMBER

- 21—School opens at Eastern for nineteenth session. Registration begins. Everybody stands in line.
- 22—Registration continues. Everybody still stands in line.
- 23—Dean Cooper gets tired of objecting to schedules and registration speeds up.
- 24—Class work begins. The rush and jam and line up shifts to the Cafeteria.
- 25—Senior College gives reception.
- 26—The campus becomes the scene of action. The boys stand in groups to watch the girls prom.
- 27—We go to Sunday School.
- 28—Teachers look serious. Students all go to the dean's office to get their schedules changed.

### OCTOBER

- 3—Classes organize. Freshmen feel important.
- 5—U. G. T. C. gets busy—elect officers.
- 7—Bill Tuttle was seen kissing "Sis" Hickman at the side door of Burnham Hall.
- 12—Prof. Smith gives a candy pulling. Miss Lillian Lenhoff of Methodist Missionary Society visits Eastern.
- 15—Literary Society give lively programs. Bess White cuts class and goes to Lexington.
- 28—The first snow falls. We think of Santa Claus.
- 30—Hallowe'en Party.
- 30—Eastern foot-ball team plays Georgetown. Maroons turn blue. Life of Christ is shown in college auditorium.
- 31—A rousing and enjoyable Hallowe'en party in Commaek Hall.

### NOVEMBER

- 7—Prof. Smith and party visit East Pinnacle.
- 10—Seniors give lively program in chapel.
- 10—Cleveland Symphonie Qunitet gives the first Lyceum Number.
- 13—Maroons win from St. Marys.
- 14—Memorial Hall boys hold big feast.
- 21—Freshman indoor picnic.
- 23—Fish Fry given by Prof. Smith.
- 24—Training School pupils give Thanksgiving Program.
- 25—Eastern runs wild over Morehead.
- 26—At home for Thanksgiving.
- 30—Blue Monday—Home from Holidays.

### DECEMBER

- 1—Anna Lane and Tom court quietly in the Library.
- 2—Virginia Routt suffers loss of one stocking in Chemistry Lab.
- 4—Mr. Sullivan meets Mildred Rice.
- 5—Tal Stone and Polly Collins are guests of the picture show.
- 12—Irene Brown buys Raymond a Christmas present.
- 16—Y. W. C. A. gives Christmas Party.
- 17—"Christmas Spirit" given by the Little Theatre and Madrigal Club.
- 18—Chemistry Exam. Weeping and wailing.
- 19—Good-bye Eastern, Home for Christmas.

### JANUARY

- 1—Welcome the New Year.
- 4—Back on the job.
- 6—Madison High School Orchestra at Chapel.
- 8—Mr. Smith suffers accident.
- 9—Mr. Stewart entertains Madrigal Club.
- 10—Henry Coates and Alta Mae Frazier proms by lantern light.
- 13—Freshmen class gives program in chapel.



## Eastern's Calendar

### JANUARY—Continued.

- 14—Katherine and Shirley attend the Neon Kripton Literary Society.
- 15—Joe King soars in Chemistry.
- 18—Miss Schneib meets committees.
- 21-22—Final Exams.
- 22—Sam King at last finds him a wife.
- 25—Enrollment of New Students.
- 29—Seniors welcome new members.

### FEBRUARY

- 6—University Women bring Miss Eleanor Boswell of Washinton to speak to women students in chapel building.
- 6—Senior girls guests of University women at Glendon Hotel.
- 12—George Colvin addresses students.
- 13—Valentine party at Gym.
- 15—Dr. Charles McMurry of Peabody College visits Eastern.
- 16—Sermon, Meredith Cox, subject "Ions."
- 17—Eastern Mother address women students.
- 18—Devereaux Players present "The Barbour of Seville and The Romancers."
- 19—Tarter has the measles—Mabel proms with Henderson.
- 20—House cleaning—Room inspection.
- 22—Holiday.
- 24—Second 'Try-out' for Little Theatre.
- 25—Bess White reports to Registrar for cutting classes.

### MARCH

- 5—Measles rages.
- 8—Miss Florence Jackson of Boston addresses U. G. T. C.
- 8—Miss Roberts gives reception in honor of Miss Jackson.
- 16—Open Forum takes on students chapel programs. Mrs. Fite speaks.
- 17—Home Ec. Department celebrate Pres. Coates birthday.
- 18—Students and faculty give special program in honor of Pres. Coates return from Legislature.
- 20—Senior girls entertain senior boys.
- 29—New comers—Enrollment past 1300.
- 30—Kitchen Cabinet Orchestra.
- 31—Miss Alberta Thomas spends week at college.

### APRIL

- 3—Art class goes to Cincinnati.
- 3—Miss Boldrick buys new smock.
- 4—Sleepy Price wakes up and rushes Tiny Dixon.
- 5—Sara Arbuckle dons new spring hat. Everybody well pleased.
- 14—Honor Roll published—Visits to the Registrar.
- 16—Oratorical Association meets at Richmond. Carolyn Moore wins for Eastern.
- 21—Virginia Routt addresses the Chemical Association at State University.
- 22-23—All out for K. E. A.
- 25—Y. W. C. A. gives open program in chapel building.
- 29—"The Maneuvers of Jane" Little Theatre Club.

### MAY

- 20—Commencement Play.
- 21—Presidents reception to Seniors.
- 23—Annual Sermon.
- 24—Class and Field Day.
- 26—Last Chapel—Conducted by seniors.
- 26—Reception to entire school.
- 27—Presentation Normal and College Elementary Certificates.
- 27—Alumni Banquet.
- 28—Commencement.



# Humor and Ads





The MILESTONE '26

---

---

The photographs in this annual  
were made by the McGaughey  
Studio (official photographs for  
the E. K. S. N. S. & T. C.)

Additional copies from these  
pictures may be had at any time,  
as all negatives are kept on file.

**THE McGAUGHEY STUDIO**  
**Richmond, Ky.**

---

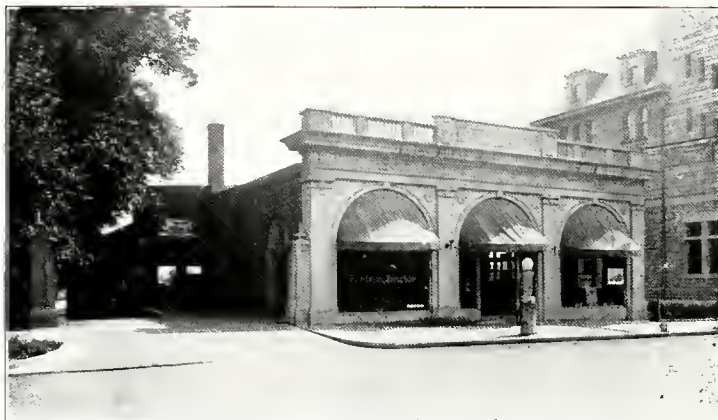
---

*KODAK FINISHING*

*Bring Them Today;*

*Get Them Tomorrow*





*“Home of Richmond Motor Co.”*

We enjoy the distinct privilege of serving both faculty and students. The School receives special consideration.

***Fireproof---Storage---Service---Gas and Oil***

The Post Office is next door

**RICHMOND MOTOR COMPANY**

---

Sis Hickman—“What do you think of a fellow who'd kiss a girl against her will?”

Leonor Butler—“He's either pretty mean, or else he's pretty good.”

---

**DRS. BLANTON & COOMER**

*Dentistry and Radiography*

RICHMOND,

KENTUCKY

Dr. O. F. Hume

Dr. J. B. Floyd

Dr. R. I. Todd

## THE RICHMOND CLINIC

Surgery, Medicine, Dentistry  
X-Ray and Chemical Laboratory

---

### COURSES OFFERED THIS SEMESTER

Astronomy—Lecture twice weekly on the various well-known stars. Outside reading from various periodicals—Photoplay Magazine, Classic.

Anatomy—No lectures. Laboratory sections held out of doors on Sullivan and Burnam Hall steps. A term paper on "Why is a Silk Stocking?"

Hydraulics—How to detect watered stock. The principles and practices of mixtures. Experiments in the combinations of fusil oil and ginger ale. Why does gin fizz?

Aeronautics—The manipulation and driving of air craft with one hand. Looping to shake out the chaperon. A special section devoted to parachute jumping is given to women.

Art Practice—Posing. How to look like a million on an allowance. Poseurs as artists. The art of make-up, so called.

---

She who hesitates is old-fashioned.

---

## RICHMOND ICE COMPANY

Incorporated

Manufacturer and Shipper of  
*Pure Distilled Water Ice*

RICHMOND,

KENTUCKY



The MILESTONE '26

*BRANOM: PRACTICE TESTS IN GEOGRAPHY*

For the Grammar Grades

Furnish scientifically planned tests and drills on the physical, political, economic, and cultural phases of geography.

All the various forms of geography tests and drill material of proved value are included. Thorough attention given to place geography. 107 tests in looseleaf binding. Twenty-one outline maps included.

*Net price, F. O. B. Chicago, \$.60*

THE MACMILLAN COMPANY

Prairie Ave. & 25th St.,

Chicago, Illinois

---

Edna (after a proposal)—“I’m sorry, Bech. Maybe some other girl will make you forget me.”

Bech—“I can never forget you!”

Edna (sweetly)—“Oh, yes, you can. You did it very nicely my last birthday.”

---

*Compliments of*

STOCKTON'S DRUG STORE

Kodaks, Drugs, and School Supplies

RICHMOND,

KENTUCKY

## R. C. H. COVINGTON CO.

Everything, to Wear for Men and Boys  
Kuppenheimer Clothes, Speedwell Fine Shoes, Knox and Berg Hats

*This Is The House That Quality Built*

RICHMOND,

KENTUCKY

---

John Ault—"Why is Bernard taking two girls to the dance?"

Caywood—"Because someone told him that he had a dual personality."

Gullett—"How'd you come out in trig?"

Eldred Adams—"Not so bad—I was the highest of all those that flunked."

Flappers are now wearing two pairs of garters; one above the knees and the other below. The upper ones are intended to hold up the hosiery and the other pair to hold up the traffic.

Lorene Myers—"I bet you are on the football team."

Bill Tuttle (proudly)—"Well, yes; I do the aerial work."

Lorene—"What is that?"

Bill—"I blow up the footballs."

---

## *Louisville Slugger Bats*

Known the World over where Baseball is played.

Used by the Majority of Ball Players in the Big Leagues, Minor Leagues and on the Sand Lot. That's why HILLERICH & BRADSBY are the largest manufacturers of bats in the World.

Write for Catalog direct to us or to

**THE SUTCLIFFE COMPANY, Louisville, Ky.**

HILLERICH & BRADSBY, Incorporated.



SUMMER time is spoon time. Let every spoonful be our ice cream. Nothing so completely satisfies. Made from the finest materials obtainable, its purity is protected by Pasteurization and Heathization, the two greatest scientific safeguards known.

*"Purer Because Heathized"*

EAT

**Dixie**  
TRADE-MARK REG. **ICE CREAM**

The home of DIXIE is one of the cleanest and most up-to-date ice cream plants in the South. Visitors are always welcome at the Dixie Home, Rose and Chesapeake, Lexington.

---

First Sophomore—"Let's take a list of the Ten Commandments."

Second Moron—"What do we want it for?"

First Sophomore—"I want to check up to see if I've missed anything."

---

*The Ohio Valley  
Teachers' Agency*

A. J. JOLLY, Founder

Back of this institution is an idea—a whole-hearted belief that every teacher is entitled to advance in his profession and to find a place where he can give the most effective service. Somewhere there is a place for you better suited to your powers and attainments. We know how to find it for you, because we know the schools of your State and use expert knowledge and experience in every position filled.

Write J. J. White, Manager, Mentor, Ky.

Compliments of  
**BYBEE SHOE HOSPITAL**  
Second Street

---

**W. S. BROADDUS**  
FIRE, LIFE, ACCIDENT and HEALTH INSURANCE  
Over Madison National Bank  
RICHMOND, KY.

## THE COLLEGE BOOK STORE

*Owned and Operated by the Institution*

### STUDENTS' SERVICE STATION

Books, Stationery, Parker Fountain Pens, and  
Pen Repairing. Official Emblem Jewelry.

Special Orders Made for Students for Articles Not Carried in Stock.

---

Bess Moore, taking Social Science 120, is now wondering if the Swift Packing Company is a rapid transit concern.

---

Marion McDougle—"I wonder what a red-headed angel would look like?"

Stamper—"Oh, he'd look like the devil."

---

The crowd cheered wildly as the team trotted on the field. Eleven determined men going forth, to give all they had for it. With them came Earle. All the boys knew Earle. On the campus his genial personality had won him many, many friends. He turned and faced the fans. He smiled. There was confidence in his eyes as well as determination. He assumed the pose the fellows had so often seen. With an assuring tone in his voice he barked out, "Peanuts, popcorn, candy!"

---

**W**HEN you buy California Canned Goods again, ask your grocer for *Sun-Kist* brand; you will be pleased, the quality is first class.

**BRYAN-HUNT COMPANY**

*Wholesale Grocers*

Lexington

Kentucky

---

Compliments of  
**E. L. MARTIN CO.**

*Wholesale Grocers*

Lexington

Kentucky

W. T. SISTRUNK & CO.

ESTABLISHED 1891 INCORPORATED 1907

*Wholesale Distributors*  
*Fruits, Groceries, Confections, Feeds*

(Largest in Central Kentucky)

Note:—We specialize on Gallon Goods for Institutions. LEXINGTON, KY.

---

Summer—A season we spent doing the opposite of what we thought we would do last fall.

Fall—A time when a college graduate realizes that the lamb epidermis he got last spring won't get him the position he thought it would.

Winter—The season when we all tell what we did last summer, and what we are going to do next summer.

Spring—In the spring a young man's fancy lightly turns to thoughts of what the girl was thinking about all winter.

---

Edyth—"I found a needle."

Donald—"Now find a haystack and we'll have some fun."

---

Dr. Grinstead—"Now Mr. Stone, if you were seated in a street car, every seat of which was occupied, and a lady entered, what would you do?"

Talton—"Pretend I was asleep."

---

DR. C. E. SMOOT

Diseases of Eye, Ear, Nose and Throat

CLAY BUILDING

RICHMOND, KY.

---

STATE BANK & TRUST COMPANY

CAPITAL \$150,000.00

RICHMOND, KY.

Surplus \$65,000.00



*We Need Some Strong Men and Women*

First Complete the Course Where You Are

Within the last few months our organization has had reported to it direct a million, one hundred and three thousand, six hundred and sixty-five dollars' worth of vacancies, many of which we filled and many of which we did not fill because we did not have well educated young men and women to supply. We can do a great deal for young people as strong as the graduates of Teachers College. After you graduate there, it might pay you to investigate the opportunities offered here.

**Bowling Green Business University**  
BOWLING GREEN, KENTUCKY

---

PLEASE LET ME SLEEP

Dear Son—"How come you asked me for only twenty-five dollars? I know that is not enough so I'm doubling."

The Dean is pleased to announce that a new system of registration has been devised whereby all red tape is eliminated.

Shut the door and windows, Jim, if the prof hears the whistle he'll stop talking and we'd rather listen to him than go to lunch.

What of it if you are broke? It's not your money I want, dear, it's you.

Oh, my husband understands me all right. It's my nasty disposition that causes all the trouble.

Best eggs; twenty cents a dozen.

---

*The Home of High Class Entertainment*

**Alhambra and Opera House**  
RICHMOND, KENTUCKY

Matinee: 2 P. M. to 5:30 P. M.      Night: 7 P. M. to 10:30 P. M.  
Prices: Children, 10c; Adults, 30c

*The Best in Moving Pictures*

# MADISON LAUNDRY

This Laundry gives special attention to Normal Students and makes two deliveries a week.

*Let Us Have the Work*

CORNER THIRD AND WATER - - RICHMOND

---

Bechman Combs—"How was the play last night?"

Jim Stacy—"Quite good. It made me think."

Combs—"Oh, one of those suggestive shows."

---

A blotter is the thing you spend your time looking for while the ink is drying.

---

Member of the Faculty—"You say this man used very abusive language. Now, are you prepared to swear it?"

Bess Moore—"Swear it? No, I wouldn't even care to write it."

---

Hardin—"Dutch, don't you like my new bob?"

Dutch—"Whatcha doin', fishing for a compliment?"

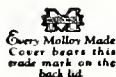
Hardin—"I never fish in shallow water."

---

*The cover for this annual was created by*  
The DAVID J. MOLLOY CO.

2857 N. Western Avenue

CHICAGO, ILL.



Bush-Krebs Company  
College Annual Engravers  
LOUISVILLE, KENTUCKY U. S. A.

The intelligent and helpful co-operation of expert College Annual men make Bush-Krebs Co. service doubly valuable.

The illustration depicts a winter scene with a large banner at the top and a testimonial scroll at the bottom. The landscape features a snow-covered field, a large tree on the right, and a building in the background. The sky is filled with clouds and a sun or moon. The entire scene is framed by a decorative border.



# annuals

NO task imposes a more definite obligation upon the Senior Class than that of preparing, in attractive form for an expectant school, the chronicle of events and activities of their last and most important year.

The task is an imposing one to say the least oftentimes made more complex by retaining the services of an inexperienced printer, to whom the importance of immediate delivery and the necessity for superior craftsmanship mean nothing.

At Fetter's your job is partly ours.

Here all work is performed by skilled hands under exacting supervision with the minimum of waste effort and annoyance for the staff.

Here every element from start to finish is given the attention an enthused staff has the right to expect—which explains why each year finds an increased number of Annuals "printed by Fetter."

Place your order here next year. You will be assured an Annual that carries out the right conception of what you want and you'll get it when you want it.

## staff

If there is any way in which we can lighten your burden you are entitled to know it. The logical thing to do is to drop us a line now and secure a tentative connection that will enable you to work along the right lines next year.

# Geo. G. Fetter Company

INCORPORATED

## Annual Printers

414 W. MAIN St., LOUISVILLE, KY.

The MILESTONE '26

Autographs

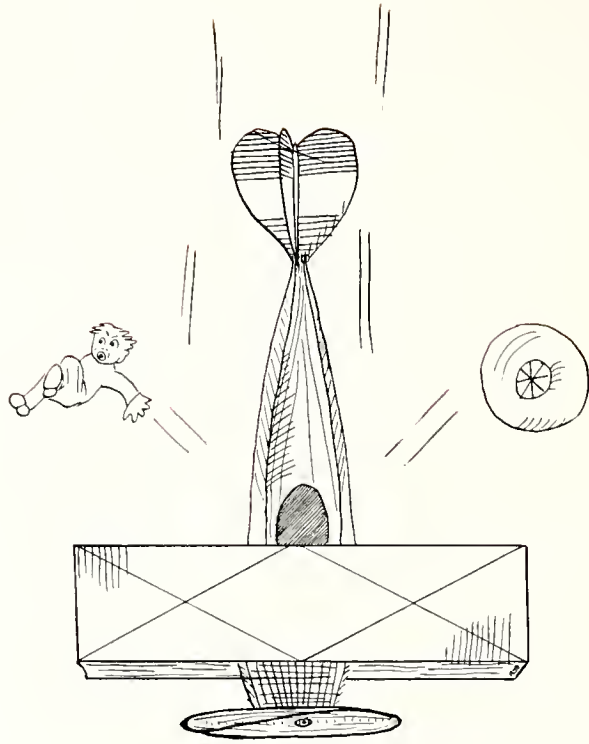
*The MILESTONE '26*

# Autographs



*The MILESTONE '26*

**Autographs**



THE END









