

12-3-1998

## Eastern Progress - 03 Dec 1998

Eastern Kentucky University

Follow this and additional works at: [http://encompass.eku.edu/progress\\_1998-99](http://encompass.eku.edu/progress_1998-99)

---

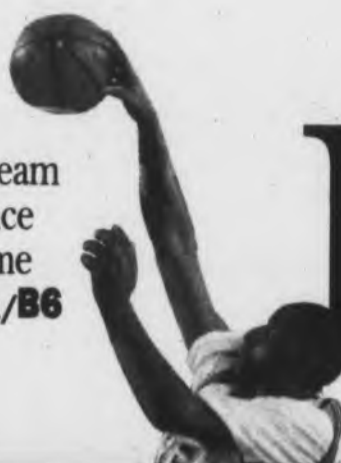
### Recommended Citation

Eastern Kentucky University, "Eastern Progress - 03 Dec 1998" (1998). *Eastern Progress 1998-1999*. Paper 15.  
[http://encompass.eku.edu/progress\\_1998-99/15](http://encompass.eku.edu/progress_1998-99/15)

This News Article is brought to you for free and open access by the Eastern Progress at Encompass. It has been accepted for inclusion in Eastern Progress 1998-1999 by an authorized administrator of Encompass. For more information, please contact [Linda.Sizemore@eku.edu](mailto:Linda.Sizemore@eku.edu).

► Sports

Ronnie Griffin and the Colonel men's basketball team will open conference play tonight at home against UT-Martin/B6



► Activities

The tradition of the Madrigal Dinner will bring 16th century English customs to Eastern/B5



# The Eastern Progress

www.progress.eku.edu

© 1998, Richmond, Ky.

Student publication of Eastern Kentucky University since 1922

Volume 114, No. 14, 14 pages, December 8, 1998

For some students alcohol and college go hand in hand. They're out of their parents' houses for the first time. They feel adult, independent, and most importantly, they can handle it. However, for some students drinking becomes a drain on their grades, study habits and social lives, and then they find themselves ...

## Hitting BOTTOM

Keeping your grades afloat



This is the third in a series about problems that affect students' performance in classes.

Story by Shawn Hopkins, staff writer

Photo illustration by Don Knight, photo editor

More

Eastern's new athletic director may need to consider an alcohol policy for student athletes, Editorial Page A3

Mothers Against Drunk Driving will hold a ceremony at 4:30 p.m. Tuesday on the Courthouse lawn to remember victims of drunk drivers.

"It wasn't that I couldn't do the work," said John, an Alcoholics Anonymous member and Eastern student who wishes to remain anonymous. "It was the effect of the drugs and alcohol. It was just being able to go to class. I couldn't get out of bed. I couldn't complete assignments."

John's experience is extreme. He said his alcoholism eventually led him to drugs, theft, and personal and economic ruin.

Yet John's experience parallels that of a number of college students.

Drinking has slowed his graduation considerably. His bright blue eyes have lines of age around them.

"There were about four or five semesters in a row when I'd get to about midterm, and I'd just stop going to class," he said. "I cared. I just, I'd get to about midterm, and I'd go on a two-week binge and just say 'Piss on it.'"

Alcohol impairs abstract thinking

Even for those students who manage to make it to class, drinking can have an adverse effect on their performance.

Michalle Rice, counselor and chair of Eastern's Substance Abuse Committee, said drinking makes it harder to study.

"Alcohol is a drug, and like a drug, causes change in the body's physical functioning," Rice said.

She said when a person engages in high-risk drinking, defined as more than three drinks in a day with more than one per hour, it impairs abstract thinking abilities.

"Abstract thinking refers to the ability to understand ideas, concepts and words. To understand relationships that might not be immediately obvious," Rice said. When these abilities are impaired it is much harder to take a test or write a term paper, Rice said.

"Impaired abstract thinking does not clear up once all the blood alcohol is out of the system. In fact, it can last up to 30 days after getting drunk. So, a person who may only choose to get drunk every weekend always functions with impaired thinking, and probably doesn't even know it," Rice said.

John agrees that drinking impairs thought when trying to study.

"Now, I can read a chapter, and I can pretty much understand what's going on," John said. "But I would sit and orchestrate some kind of big deal every time I sat down to study. I would try to memorize it, and there was no way I could do it. I'd run myself ragged."

Grades drop depending on drinking

Rice cites a survey of 37,000 students at 66 four-year universities by the Core Institute that shows student grades dropping depending on the level of alcohol consumption.

"A" students reported a little more than three drinks a week, while "F" students averaged about nine.

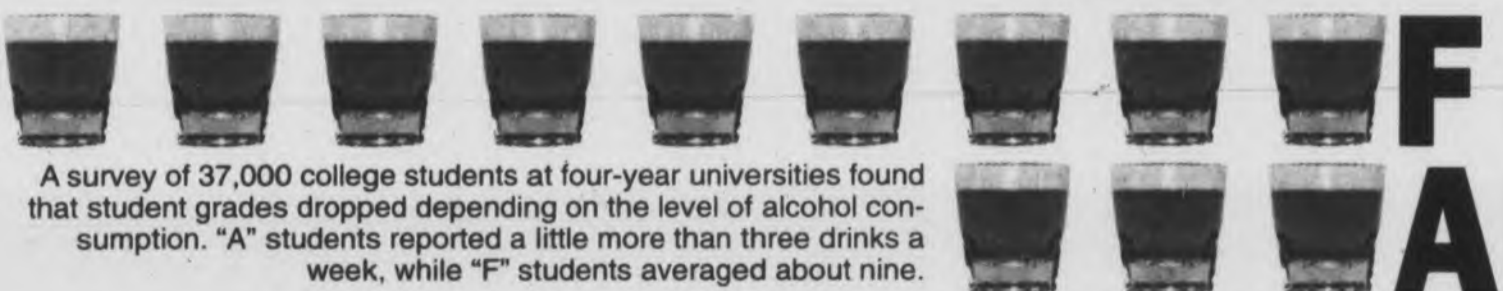
The Chronicle on Higher Education released research findings in September that said of more than 14,500 students at 116 institutions, 43 percent said they had binged at least once in the two weeks before they were surveyed.

The Chronicle also reported the number of students who abstain from drinking grew to 19 percent this year from 15.6 percent in an earlier study.

Of those students who drink, 52 percent said the reason they drink is to get drunk. In the first study, 39 percent said that was the reason.

The Chronicle reports that despite the national attention focused on binge drinking at colleges, the

See Bottom/Page A7



A survey of 37,000 college students at four-year universities found that student grades dropped depending on the level of alcohol consumption. "A" students reported a little more than three drinks a week, while "F" students averaged about nine.

## College of business reorganizes

Four departments being cut to two

By ALYSSA BRAMLAGE  
News editor

Talk of reorganizing the college of business has ended with one department moving and the remaining three being consolidated into two.

"This hasn't happened all at one time," said Robert Rogow, dean of the college of business. "Since July, different faculty members have said ways they wanted it (reorganization) to be done. If we're going to do this, we need to do it now."

The department of economics is moving to the college of social and behavioral sciences. Rogow said the economics faculty voted overwhelmingly for the move. And other universities across the country are mixed in their placement of economics departments, Rogow said. Some are in business colleges and others are affiliated with social and behavioral sciences.

"It is very acceptable (to put an economics department in social and behavioral sciences)," he added.

The other three departments — accounting, management and marketing, and information systems — are being combined into a yet-to-be-named department and an analysis and information department.

Management and marketing will be combined with the



Robert Rogow, dean of the college of business, said the reorganization had to be done.



Fred Ruppel will move with the economics department to social and behavioral sciences.

administrative communication and services program to form a new department. The accounting, finance, decision sciences and computer information systems programs will join to make the analysis and information department.

"We're realigning areas that are more closely allied with one another," Rogow said. "This is to help with the accreditation process and coordinate areas that have been split apart and need to be put back together."

The chair of economics, Fred Ruppel, will stay with the department through its move. The accounting chair, Jessica Frazier, will be the interim chair

See Business/Page A6

► College of education

## Salary, sexual harassment at center of suit

By ANDREA DECAMP  
News writer

The college of education is involved in a lawsuit filed Sept. 17 by one of its professors.

The lawsuit was filed by Wayne Swezig, a professor in the department of administration, counseling and educational studies, because the university failed to award him merit pay for the academic year 1996-97 and because of a complaint of sexual harassment Swezig's lawyer says is unfounded.

"The sexual harassment complaint is an allegation of such that we consider to be completely out of foundation," John Lackey, Swezig's lawyer, said.

The libel and slander counts included in the lawsuit stem from a memo that was distributed by Leonard Burns, chair of Swezig's department, to

Kenneth Henson, dean of college of business, Russell Enzie, vice president of academic affairs, and Doug Whitlock, vice president for administrative affairs.

"All we know is what is in that memo — it may not have even gone to the people it was copied to," Lackey said.

Specifically named in the lawsuit are Burns, Eastern, Enzie in his official capacity of vice president for

academic affairs and Henson.

The lawsuit lists five counts:

- intentional infliction of emotional distress
- libel and slander
- failure to supervise
- breach of contract and unjust enrichment
- breach of covenants of implied covenant of good faith and fair dealing, promissory estoppel and equitable estoppel.

See Suit/Page A5

### A professor says the university failed to award him merit pay.

## Tech fee, more to be voted on at meeting

Council on Student Affairs to look at three proposals

By DENA TACKETT  
Assistant news editor

When the Council on Student Affairs meets, it will discuss the fate of not only the technology fee, but also franchising and mandatory curriculum contracts.

The meeting is at 2:15 tomorrow in Jagers Room of Powell Building.

Tom Myers, vice president for

student affairs, is optimistic that all three items will be voted on at the meeting.

"I think everything on the slate will come off," he said.

The technology fee, which was tabled at the last Council on Student Affairs meeting, was passed by Student Association Oct. 6 after amendments were debated.

Two of the amendments, that the fee only be used for technolo-

gy and that there be a committee with student representatives to determine if the fee is being spent correctly and to plan new ideas for the fee, passed and were incorporated into the proposal.

The technology fee would cost students \$50 a semester.

Also to be discussed and voted on at the meeting is Student Association's proposal for mandatory curriculum contracts.

The proposal was passed by SA and passed on to the council Oct. 27. The act calls for curriculum contracts to be mandatory for students entering their junior year and are designed to ensure students know exactly what is required of them to graduate.

Some colleges in the university already use these contracts, but if the act passes, all colleges must use them.

See Meeting/Page A6

► Inside

- Accent ..... B1
- Activities ..... B5
- Arts ..... B3
- Classifieds ..... A4
- Perspective ..... A2, 3
- Police Beat ..... A4
- Sports ..... B6-8
- What's On-Tap ..... B2

► Weather

TODAY  
Hi: 70  
Low: 50  
Conditions:  
Sunny  
FRI: 67, Showers  
SAT: 68, Showers  
SUN: 68, Showers



► Reminder

The Dec. 10 issue of *The Eastern Progress* will be the last of the semester.

► MWF week

# Perspective

A2 Thursday, December 3, 1998

The Eastern Progress

Brian Simms, editor

## ▶ Editorials

# An open invitation



## Students should realize Eastern is no perfect world when it comes to crime

Here are just a couple of pieces of proof from Eastern's division of public safety that we do not live in a perfect world:

Oct. 21

Amy Gibson, 19, Dupree Hall, reported her wallet stolen from her unlocked dorm room.

Nov. 5

Matthew D. Guerrero, 21, Martin Hall, reported a lockbox stolen from his room after he accidentally left the key in the door.

If it were even a near-perfect world, people could leave their front doors unlocked, leave their keys in unlocked cars, walk around campus at 2 a.m. alone and they wouldn't have to worry about having their laundry stolen from the dryer if they weren't watching over it.

Unfortunately, it isn't a perfect world, and Eastern is no exception.

According to public safety reports, at least eight students have reported having items stolen from their dorm rooms or cars this semester — after leaving them unlocked.

And that number doesn't even reflect the reports of students who have gotten their purses or bookbags stolen after leaving them sitting in the library or reports of stolen items that don't indicate whether the door was locked or not.

Many students seem to think they can leave their dorm rooms unlocked and are safe from having their belongings stolen. What they're really doing, though, is hanging a sign on the door that says, "Hey, the door's unlocked. Come on in and take whatever you want."

While it would be nice to not have to worry about this, the fact is that leaving your dorm room door unlocked is like an open invitation for anyone who decides they would like to have your television, CDs, cash and anything else they have time to grab before you get home.

Eastern may at times seem like a separate world to students, but crime exists on this campus as it does in the rest of the world. Most people at Eastern or in the

rest of the world don't leave their doors unlocked or their keys in their unlocked car for fear of getting their belongings stolen.

With the holiday break and finals coming up, students have a lot of things on their mind other than safety. Criminals, however, have their minds on students leaving their belongings and cash unguarded, especially at this time of the year. So, as you're rushing around studying for finals, packing up to go home for the holidays or move out of the dorms, remember not to ask for someone to take your things or money and lock the door.

**According to public safety reports, at least eight students have reported having items stolen from their dorm rooms or cars this semester — after leaving them unlocked.**

## New AD must address athlete alcohol problem

It is unfortunate that sometimes we have to learn lessons the hard way.

That is what happened when the death of two students, one a University of Kentucky football player and the other an Eastern student, Christopher Scott Brock, died as a result of drunk driving.

Now, C.M. Newton, athletics director at UK has

adopted the policy that if student athletes are convicted of drunk driving, they will be kicked off the team and lose their scholarship.

Newton has laid down the law at UK, but at Eastern, the law rests with the coaches.

Eastern Kentucky athletics does not have an alcohol policy. It does have a drug policy. However, if a student athlete has a run-in with the

law involving alcohol, his or her individual coach decides the athlete's punishment, or lack thereof.

There are good and bad points to this, and when new Eastern athletics director Jeff Long begins his job Monday, the first thing he needs to do is address this problem.

He needs to decide if it is his job to punish the athlete or the coaches' job.

Some coaches, including football coach Roy Kidd, believe that the policy should be with the coaches because they know the players personally.

This is a good point, but this means that some athletes may be treated differently for committing the same infraction.

Because of this, an athletics director should know the athletes and deal

with them when they mess up.

The student athlete represents the university and he or she receives compensation in the form of an education.

However, many student athletes seem to have taken a different view of higher education.

A Nov. 20, 1998 article in The Chronicle of Higher Education, said

that athletes binge drink more than other students — one and a half times more.

The university needs to learn from the happenings at UK, and Long needs to make sure that his new employees have the right idea when it comes to the problem with alcohol and athletes.

Don't make us learn the hard way.

### Corrections and Clarifications

The story in the Nov. 19 issue of *The Progress*, "AD search ends after 'Long' delay," should have said that President Robert Kustra offered Jeff Long the athletics director's job Nov. 11. An editorial in the same issue should have said public relations director Ron Harrell informed *The Progress* on Nov. 11 that the announcement would be made the following day.

The Nov. 19 issue of

*The Progress*, should have said that the college of business' accreditation from the American Assembly of Collegiate Schools of Business was deferred.

The Eastern Progress will publish clarifications and corrections when needed on the Perspective pages.

If you have a correction, please send it to the editor in writing by noon Monday before publication on Thursday.

## The Eastern Progress

www.progress.eku.edu

117 Donovan Annex, Eastern Kentucky University, Richmond, Ky. 40475

Brian Simms | Editor

Jamie Neal | Senior editor

Gwenda Bond | Copy editor

James Carroll, Michael Age, Greg Parr | Staff artist

The Eastern Progress (ISSN 1081-9324) is a member of the Associated Collegiate Press, Kentucky Intercollegiate Press Association and College Newspaper Business & Advertising Managers, Inc. The Progress is published every Thursday during the school year, with the exception of vacation and examination periods. Any false or misleading advertising should be reported to Adviser/General Manager, Dr. Elizabeth Fraas.

Opinions expressed herein are those of student editors or other signed writers and do not necessarily represent the views of the university. Student editors also decide the news and informational content.

### Progress tobacco ad policy

As you can tell from the Rooster Smith insert in today's *The Eastern Progress*, we will accept tobacco advertising.

Tobacco, just like any other product, is legal and has a right to advertise.

Rooster Smith has the First Amendment right to free speech.

We may not always agree with the products we advertise; however, we will leave the choice to use the advertised products up to the reader.

If the *Progress* chooses not to run tobacco advertisements, we would also have to exclude some popular inserts, such as U. Magazine,

which carries tobacco advertisements.

Advertisements involving alcohol also would have to be evaluated.

Several other universities in the state, such as the University of Kentucky, Morehead State University, Murray State University and Western Kentucky University, also advertise tobacco products in their student newspapers.

As always, feel free to give us input. Either call us at 622-1881 or drop a line at 117 Donovan Annex or via e-mail at <progress@acs.eku.edu>.





► Student Association

# Reach-Out program receives money

By ANDREA DeCAMP AND ALYSSA BRAMLAGE

Eastern often feels like a small world all its own. The university community, though, is not without problems the rest of the world faces, such as crime and poverty. Many families living on campus are at the poverty level, and any donation is greatly appreciated.

Student Association annually donates to the Reach-Out program which helps needy students with families living on campus.

The program is sponsored by Student Association, which asks for donations from other groups on campus and businesses within the community.

The money collected goes to pay for a Christmas dinner, including a turkey, and other necessities.

Each family is selected anonymously from a list provided by Bonnie Roop, senior clerk in billings and collections. Roop determines the families most in need and gives those names to Student Association.

The gift boxes will be dropped off Dec. 18 to the families on campus. The senators delivering the donations will simply ring the doorbell and leave the box for the family to find.

After its regularly scheduled meeting, around 15 members of senate met in the grill to discuss student concerns on campus.

The student forum was a way for senate to discuss ideas for publicizing events like the forum and other plans the group has.

Senators also discussed problems they saw with the university like charging to receive a transcript and to drop/add a class.

A big concern Tuesday was the proposed dropping of student evaluations brought up at Faculty Senate meetings in conjunction with grade inflation.



Brian Simms/Progress

New Eastern athletics director Jeff Long meet with some members of the women's golf team after a press conference Nov. 24 that introduced Long to the Richmond community.

# New AD to begin job Monday

By BRIAN SIMMS Editor

## Jeff Long's experience

- August 1998 - Dec. 7, associate athletics director, Virginia Tech University
- 1996 - August 1998, associate athletics director, University of Michigan
- 1990 - 1996, assistant athletics director, University of Michigan
- 1988 - 1990, assistant to the athletics director and compliance coordinator, University of Michigan
- 1988, assistant athletics director, Rice University
- 1987, graduate assistant football coach, University of Michigan
- 1986, assistant football coach, Duke University
- 1983 - 1986, administrative assistant for head football coach, North Carolina State University
- 1982, graduate assistant football coach, Miami University

Beginning Monday, Eastern will have its first full-time athletics director since 1990.

That's when Jeff Long will assume the role of guiding Eastern's 16 Division I programs.

"For an athletics program to be successful, it must have the support of the president of the institution, and we certainly have that in Dr. (Robert) Kustra," said Long, who was introduced to the Richmond community as athletics director at a press conference Nov. 24.

"I come with two very simple goals, and one is that we as a university athletics department create an environment where student athletes, coaches and staff strive to be the very best that they can be," Long said. "The second goal is that we continue to build upon the success of Dr. (Robert) Baugh and those who came before him as we lead Eastern Kentucky to new heights."

Long comes from Virginia Tech University, where he has

been associate athletics director since August.

Before that, Long, 39, spent 10 years in the athletics department at the University of Michigan, the last two as associate athletics director.

"I've taken them (my family) from a Wolverine, to a Hokie, to a Colonel, all in a four-month period," Long said.

Kustra chose Long out of four candidates recommended by a search committee to replace Baugh.

"Everyone thought that Jeff Long deserved to be an athletics director at this point in his career," Kustra said. "Jeff came so highly qualified."

Kustra said Long signed a four-year contract and will make \$89,500 in his first year.

Long will have a temporary office in Perkins Building until his new office is finished in Alumni Coliseum.

He will be taking room 107 in Alumni Coliseum, just down the hall from many of the athletics department coaches and administrators.

"It's important for me to be near many of them," Long said.

# Suit: Education professor sues over salary, harassment

From the front

Count One of intentional infliction of emotional distress centers on claims made by Swezig in court documents that Burns acted "with malice ... and wanton disregard of the rights of Dr. Swezig."

Count Two, based on libel and slander, states the conduct of Burns, in distributing the alleged false memo accusing Swezig of sexual harassment, was malicious.

Count Three of failure to supervise states Swezig feels Enzie and Henson deliberately displayed indifference when he voiced his concerns over merit pay to the university.

Count Four, breach of contract, specifically centers on the lack of merit pay Swezig received.

According to the college of education guidelines for merit awards, "The merit award will be calculated as a percent of a faculty member's annual salary, using the University approved formula. Merit awards will vary and are dependent upon the extent to which an individual exceeds minimum performance standards."

However, according to Swezig's suit, he was not awarded merit pay even though he was teaching above the recommended course load of a professor teaching graduate courses.

In every year up to the summer of '96, Swezig received merit pay, according to the faculty and staff roster. According to that same document, in that year he received no salary increase. Instead his salary remained at \$54,818.

The mean percent increase for the rest of his department in '96 was 8 percent, analysis of the salary roster concluded.

The mean percent increase for the department in '97 was 4.3 percent, analysis of the salary roster concluded. Swezig's salary for the '98-'99 year is \$56,615.

Count Five deals with more of the merit pay in that Swezig alleges he was subjected to disparate treatment in the application of merit pay and was subjected to retaliation in the form of abusive behavior from his department chair when he exercised his rights of appeal and petition.

The case is slated to be heard

## Key players in the lawsuit



Russell Enzie, vice president of academic affairs

Kenneth Henson, dean of the college of education



Doug Whitlock, vice president for administrative affairs and director of affirmative action

Leonard Burns, chair of academic, counseling and educational studies department

in three different courts. The contract claims will be heard in the Franklin County Circuit Court in Frankfort, the personal injury claims will be heard in the Board of Claims in Frankfort and the others in Madison County.

Lackey said the case is too young to tell if it will go to trial. "It's not something you can plan on," Lackey said.

The university attorney, Kacey Coleman, said no questions concerning the case could be answered so early.

"At this stage we are simply in jurisdictional issues," Coleman said.

Doug Whitlock, also the acting director of affirmative action, said the sexual harassment complaint is not something that could be commented on at this time. He also said "by practice we don't comment on matters in litigation."

Wayne Swezig was not available for comment on the case.



Let us take care of all your Holiday Needs!

- party trays
- desserts
- homemade soups
- gift certificates

Call 626-1800

201 Water St. Suite #1 (next to Panama Jim's)

# World Famous BODEANS TATTOOS and professional Body Piercing

My studios are for people who want the CLEANEST & BEST KENTUCKY'S FINEST OPEN 7 DAYS A WEEK you must be 18 years old

AUTOCLAVE STERILIZATION Traditional, Oriental, Cover-ups, Black & Grey, New Needles & Ink for everyone

SOLE SPONSOR OF KENTUCKY'S ONLY TATTOO EXPO Your imagination is our only limitation!

Think of that special someone with our: • gift certificates • gifts & collectibles

255-6403 510 New Circle Rd. Lexington, KY 624-0255 120 S. Second St. Richmond, KY



99¢ Gravy & Biscuits w/coupon

not valid with any other coupon or offer

Big Hill Avenue 624-0481 131 N. Keeneland 623-3625

# NOW HIRING All Positions

It's not just for journalism majors! The Eastern Progress provides valuable experience that you need in the real world. If you like to write, work in business sales, or have a thing for computers and design you could be a part of one of the top student newspapers in the country. Of course, it's worth working here just to add to your resume, but guess what? We'll pay you!

Now hiring for the Spring 1998. For a complete list of salaries and positions check out our website at [www.progress@acs.eku.edu](http://www.progress@acs.eku.edu).

Applications should be in by Friday, December 11.

The Eastern Progress

117 Donovan Annex 622-1881 fax 622-2354 progress@acs.eku.edu

We Don't Sell Bread and Produce! We Just Make Great Pictures. Come in and See the Difference.



Harper Square, Richmond, 625-0077 We're on the north side of town

► Faculty Senate

# CPE president to speak to group Monday

By ALYSSA BRAMLAGE  
News editor

Gordon Davies, president of the Council on Postsecondary Education, is visiting Eastern's faculty in person for the first time Monday.

Davies will speak at the Faculty Senate meeting at 3:30 p.m. on the second floor of Keen Johnson Building. All faculty members are invited to attend.

Karen Janssen, chair of Faculty Senate, said Davies will visit senate because he is the first president of the CPE and is making reforms to higher education.

"There are many occurrences in postsecondary education in

**"Our questions help inform the president of the CPE what faculty interests and concerns are."**

*Karen Janssen, chair of Faculty Senate*



Kentucky, and we have the opportunity to be involved in the changes," Janssen said. "We're playing a new game with new players."

Davies said he will work with the questions that faculty members ask him rather than read a prepared speech.

"I find that works best," he said.

He anticipates discussing the reforms of postsecondary education, the role of universities in that reform, the role of community and technical colleges and the Commonwealth Virtual University.

"I'll also give my views on being here (with CPE) about two weeks longer than your

president," Davies said.

Davies said he wants to speak with Eastern's faculty because he wants to hear their opinions on the reforms in an informal setting.

"I value the perspectives of the people who are actually doing it," he said. "I want to get a general sense of the issues they're concerned about."

Janssen hopes this meeting will accomplish three things: an informed faculty, positive working relationships between faculty and the CPE, and provide an opportunity for faculty to express themselves to the president through questions.

"Our questions help inform the president of the CPE what faculty

interests and concerns are," Janssen said.

Also on the agenda, the election committee will announce whether a faculty regent has been chosen for the Board of Regents.

Marianne McAdam said the committee will announce whether a recount is needed in the election between Wayne Jennings, Merita Thompson and Allen Engle.

If one of the candidates does not receive a majority of the votes of the people who voted, then a recount is needed, McAdam said.

"That's what happened last time (the committee needed a recount), and hopefully that won't happen this year," she said.

## Business: College reorganizes

From the front

of analysis and information. The management and marketing chair, Rosemary Ramsey, will be the interim chair of the as-yet-unnamed department.

Another part of reorganization includes a proposed addition of an associate dean of the college.

The associate dean would be responsible for internal affairs like curriculum, computer labs, advising and assessment issues, Rogow said.

The department chairs and associate dean would report to Rogow while he also takes care of external affairs with the business community and the small business development center in Somerset.

Rogow said the associate dean would give him more time to work toward accreditation and to work on special projects.

### Reorganization begins July 1

Officially, the reorganization will take effect July 1, 1999, when the new fiscal year begins. The programs and departments will gradually become closer though beginning Jan. 1, 1999.

The official change will take place next summer because of the approval process. The Council of Academic Affairs, Faculty Senate and the Board of Regents all need to approve the change.

Fred Ruppel, chair of the economics department, said economics is fundamentally a social science and therefore, the move makes sense.

"The college of business tends to be concerned with the role of the firm," Ruppel said. "Economists who are social scientists look broader — the role of industry in society, not very firm-specific. We're much more global, much more national in focus."

When the transition does take place, Ruppel and Rogow agree the transition should be a smooth one.

"Most of the move is on paper," Ruppel said.

Rogow admits that the change may affect some students, but in the long-run, he said it is the best interest of those students.

With the chairs of the marketing and accounting departments becoming interim chairs, there is no place for the dean of information systems.

Virgil Brewer has chaired the department since 1989 and said he has no desire to just coordinate an information systems program.

"It would be best to just bow out and go back to teaching," he said.

## Search committee narrows VP finalists

PROGRESS STAFF REPORT

After months of screening and checking references, the 13-member search committee finding a replacement for Russell Enzie, vice president of academic affairs, will narrow the candidates down to three to five finalists this weekend.

"We just have to make some distinctions between some very fine people, and our goal is to have that done by this weekend so we can start bringing them in," said Doug Whitlock, vice president for administrative affairs and chair of the committee.

The committee is not releasing the time and exact date it will meet to determine the finalists for confi-

dentiality reasons, said Karen Janssen, vice chair of the committee and professor of special education.

After the committee presents the finalists to President Robert Kustra, the candidates will be brought to campus.

After the finalists are named, the decision will be left up to Kustra. He will then recommend the one he chooses to the Board of Regents.

The original goal of the committee was to have the replacement here by Jan. 1, 1999.

"That would be lovely," Janssen said.

The appointed officer will be responsible for curriculum, faculty hiring, promotion, policies and academic policies.

## Meeting: Council to vote on tech fee, more tomorrow

From the front

Another topic that will be discussed during the meeting is the franchising of the university's food services.

The proposal to franchise food services was passed at SA's Nov. 10 meeting.

If the act is passed, Eastern will send out invitations to franchisees, and they will bid to come here. The bids will then be evaluated by the university, and the franchisees will pay Eastern for space.

"The timing on that is not good," Myers said. "I think the university is already making that commitment (to franchising). They (the Council) just want to reiterate that they want the university to move on with it, and the

university is moving on with it."

Myers said a lot of companies are interested in coming to Eastern.

The Council on Student Affairs will most likely be meeting several more times before the semester is over, Myers said.

"We meet every time we can get the materials together," Myers said.

Still left is Residence Hall Association's parking rezoning proposal and stamp machine proposal, which Myers said the council will vote on when RHA gets it to the Council.

Organizations such as RHA have a certain length of time they can submit proposals to the Council on Student Affairs before each meeting, Myers said.



### Dancin' the night away

Stacey Woolter and Dan Chuy perform a program called "After Hours" Tuesday night at the EKU Dance Theatre Fall Concert in Weaver Dance Studio. Eleven programs were performed.

Brenda Ahearn/Progress

# Apollo Pizza

**HOLIDAY SPECIALS**  
Fast Free Delivery 623-0330 Dine-In Special

<p><b>Hot Subs and Steak Hoagies</b> Pizza Sub... pepperoni, ham, mushrooms, onions, cheese &amp; Sauce Sausage Sub... mild Italian sausage, cheese and 2 vegetable toppings Meatball Sub... sauce &amp; mozzarella cheese Ham &amp; Cheese... ham, mozzarella cheese, sauce and 2 vegetable toppings A-1 Steak Hoagie... steak, mozzarella cheese, onions, mushrooms &amp; steak sauce Western Hoagie... steak, mozzarella cheese, onions, green peppers, &amp; Bar-B-Q Italian Steak Hoagie... steak pizza sauce, mozzarella cheese, onions &amp; mushrooms Bacon Cheddar Steak Hoagie... steak, bacon, cheddar cheese, onions</p>	<p><b>Sides</b> Garden &amp; Chef salads Baked Spaghetti, Garlic breadsticks, Cheddar Fries, Mozzarella Stix, Jalapeno Poppers, Deep Fried Mushrooms, BQ Wings, Hot &amp; Spicy Wings and Italian Wings, Cheese Bread, Frito Lay Chips</p> <p><b>Beverages</b> Pepsi, Diet Pepsi, Mt. Dew, 7Up, Rootbeer and Milkshakes</p> <p><b>Toppings</b> Pepperoni, Mushrooms, Onions, Ham, Pineapple, Bacon, Italian Sausage, Green Peppers, Jalapeno Peppers, Hot Banana Peppers, Ground Beef, Black and Green Olives</p>
<p><b>APOLLO PIZZA</b> \$12.95 2 Medium Pizzas with One Topping *Price includes State Sales Tax Expires 12/31/98</p>	<p><b>APOLLO PIZZA</b> Party Pizza Special \$15.25 20" Party Pizza with 2 toppings Cut in about 30 squares *Price includes State Sales Tax Expires 12/31/98</p>
<p><b>APOLLO PIZZA</b> Large 14" Pizza Special \$8.60 Large One topping Pizza *Price includes State Sales Tax Expires 12/31/98</p>	<p><b>APOLLO PIZZA</b> Hoagie Special \$6.95 Steak &amp; Hoagie &amp; Cheddar Fries *Price includes State Sales Tax Expires 12/31/98</p>
<p><b>APOLLO PIZZA</b> Pizza Sub Special \$6.25 Pizza Sub; Garlic Stix &amp; 32 oz Soft Drink *Price includes State Sales Tax Expires 12/31/98</p>	<p><b>APOLLO PIZZA</b> Sub &amp; Salad \$5.95 Your choice of a Pizza Sub; Sausage Sub; Ham &amp; Cheese or a Meatball Sub *Price includes State Sales Tax Expires 12/31/98</p>

## OCEANFRONT TAN-IN

INTRODUCING  
NEW PRODUCT LINE  
ALCOHOL FREE  
Bath and Body Care  
for EVERYBODY

Luxurious Hand and Body Cream  
Fragrant Body Splash Spray  
Shower Gel, Bubble Bath  
Body Scrub  
Bath Salts, Bath Beads  
Massage Oil, Scented Candles

**ALWAYS THE PERFECT GIFT!**

One (1) Free Tanning visit  
with purchase of any  
Bath and Body Care Product

*One per customer.*

MUST PRESENT THIS AD      EXPIRES 12-31-98

519 Leighway Drive      623-8993

## Bottom: Binge drinking affects students' class performance

From the front

problem has not declined in the past four years.

Excessive drinking has other impacts on campus life. Rice cites problems including noise, vandalism and physical, verbal and sexual assault as being associated with alcohol.

"Another problem with alcohol is the combining of high risk behaviors," said Allen Rader, with Eastern Student Health Services. He said that drinking and driving, fighting, unprotected sex and other assorted dangerous activities were much more likely to happen while intoxicated.

Then there are health problems. Although a few studies show a couple of glasses of wine a day may actually be beneficial to health, Rader said the risks of drinking excessively far outweigh the benefits.

"Contrary to what most people think, it causes a slowdown in the body's functions," Rader said. Excessive drinking can also lead to cirrhosis of the liver and a higher risk of heart disease, he said.

There is also the chance you might be an alcoholic, as is John.

"It's (alcoholism) a continuous, progressive, fatal illness," John said. "If I could drink normally, I would. It's just that I can't do it. An alcoholic can't quit drinking."

But even if a person only drinks on Thursdays, the traditional drinking day at Eastern, he or she could have a problem. It depends on how

much he or she drinks.

"Binge drinkers are seven to 16 times more likely to have experienced alcohol-related problems — missed class, behind in schoolwork, had unplanned sex, had unprotected sex, unwanted involvement with law enforcement officials, damaged property and injuries," Rice said.

These drinkers were also 16 times more likely to ride with a driver who was intoxicated, according to a study.

Rader sees an even more serious problem with binge drinking.

"It would be very smart for people that go downtown to know the signs of alcohol poisoning," he said.

Alcohol poisoning shuts down your breathing. It is an insidious killer in that it often looks just like going to sleep, he said.

"You tell everybody just to let them sleep it off," Rader said. But he said that is not always the best idea in cases of heavy drinking.

"I remember taking care of a patient in the emergency room, and we got to them just as they stopped breathing," Rader said.

He said that if doctors had gotten to the patient just a moment later, the patient would have died.

John seems to be doing OK now. He's getting closer to finishing school, even though it took a little longer than he expected.

"It got to the point where I had everything I owned in a paper sack, and it was either sober up or they we're gonna cover my ass up."

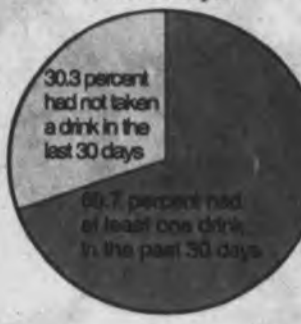
### Bottom of the barrel is closer than before

Results from the 1995-96 Core survey showed 82.8 percent of students said they had taken a drink within the past year.



Source: Core survey 1995-96

Other results showed 69.7 percent of students said they had taken a drink within the last 30 days.



Jenny Bunch/Progress

### Symptoms of alcohol poisoning

- Person is unconscious or semi-conscious and can't be awakened.
  - Cold, clammy, pale or bluish skin.
  - Breathing is slow, less than eight times per minute, or irregular with 10 seconds or more between breaths.
  - Vomiting while "sleeping" or passed out and not waking up after vomiting.
- If a person has any of these symptoms, he or she is suffering from acute alcohol intoxication.
- Get help. Call someone — an ambulance, public safety, someone who can help.
  - Do not leave the person alone. Turn the victim on his/her side to prevent choking in case of vomiting.
  - Always heed "better safe than sorry" if you are not sure what to do.

**BUY RECYCLED.**

**AND SAVE:**

When you buy products made from recycled materials, recycling keeps working. To find out more, call 1-800-CALL-EDF.

AG EPA ECF

**Great Food  
Great People  
Great Atmosphere**

**Madison Garden**

152 Madison Ave. 623-9720

**Kentucky Collision Center**

ASE Certified I-CAR Trained

**Full-Service Body Shop**

- Free estimates
- Towing available

All Claims Welcome

626-0600 240 N. Keeneland Dr.

Add a Little Attitude to Your Style

# CUTUPS

Introducing these new services

- nails
- scalp massages
- pedicures

**\$5 off full set of nails** Exp. 12/20/98

**\$5 off haircut** Exp. 12/20/98

Call for an appointment  
**623-5770**

206 south third street (next to the little house and Viscious Cycle)

**Rite-Aid at Your Holiday Parties**

**Sutter Home White Zin 1.5** \$7.99

**Jim Beam 4-year 1/2 gallon** \$15.99

**Gallo Livingston Cellars Wine Chabli 1.5** 2 for \$9

**Bicardi Rum 1.75 L** \$15.99

**Franzia Boxwine (Blush, Chillable Red, Chabli)**

**Early Times 1/2 Gallon** \$14.59

**Jack Daniels Cordials** \$3.99

**Kahlua Liqueur 750 mL** \$14.99

**Seagram's Crown Royal 750 mL** \$16.99

623-5811 pharmacy 623-5812  
**Carriage Gate Shopping Center**

Mon.-Thurs. 9 a.m.-9 p.m.  
Fri.-Sat. 9 a.m.-10 p.m.  
Sun. Noon-6 p.m. exp. 12/10/98

**COME OUT & PLAY**

Players of all ages from all around Kentucky come together for exciting sports and fabulous fun. Striving to win a medal and having a ball trying. Come out and play in the Bluegrass Winter Games.

Start a family tradition. Maybe take home a medal. Whatever your game, whatever your goal, the idea is fun. Because it's playtime.

SPONSORED BY: Ashland, Inc., Valvoline, Lexington Herald-Leader, QTE, Kentucky Utilities, Clark Metal Handling, Pepsi-Cole Bottling Co., Fruit Of The Loom.

SPONSORED BY: Lexington Convention and Visitors Bureau, KY National Guard, KY Broadcasters Assoc., KY Press Assoc., KET-TV Kentucky Network, KY Cable Telecommunications Assoc., HSN Broadcasting, Champions Against Drugs.

Lexington, Louisville January-March 1999 For information call 1-800-772-8656 or visit us at www.bgg.org

This advertisement paid for by:

# The Eastern Progress

www.progress.eku.edu  
117 Donovan Annex  
622-1881 fax 622-2354

You have new friends and roommates at EKU. They need Christmas presents. We have them.

Since 1978

# recordsmith

WHERE YOUR MUSIC MATTERS

623-5058 EKU BY-PASS ACROSS FROM PIZZA HUT

Curious how to get extra cash for Christmas? **IMMEDIATE CASH PAYMENT!**

Donate life saving plasma and make \$205+ as a new donor or \$175+ as a repeat between Thanksgiving week and Christmas week. Bonuses available with consecutive donations.

- Safe, sterile procedure
- You can NOT get AIDS by donating
- Our facility is licensed by the FDA
- Ask about the Holiday Punch Board

**Sera-Tec Biologicals Limited Partnership**

292 S. Second Street  
624-9815 for office hours

**Colonel's Electric Beach**

**GIVE A TAN FOR CHRISTMAS Think Ahead and Save**

**Gift Certificates Available 5 visits for \$10** (good for use after December 26)

Located next to Colonel Corner Deli at the edge of campus 624-8773

Look What a Gift of \$25 A Month Can Get Your Kids These Days.

Help your kids out with college, a first car or a first home. With competitive interest rates, it's amazing what a gift of U.S. Savings Bonds can do for your kids.

Call toll free: 1-800-4US BOND.

www.savingsbonds.gov

# Applebee's

**Buy one entree get a FREE appetizer!**

Exp. 1/30/99

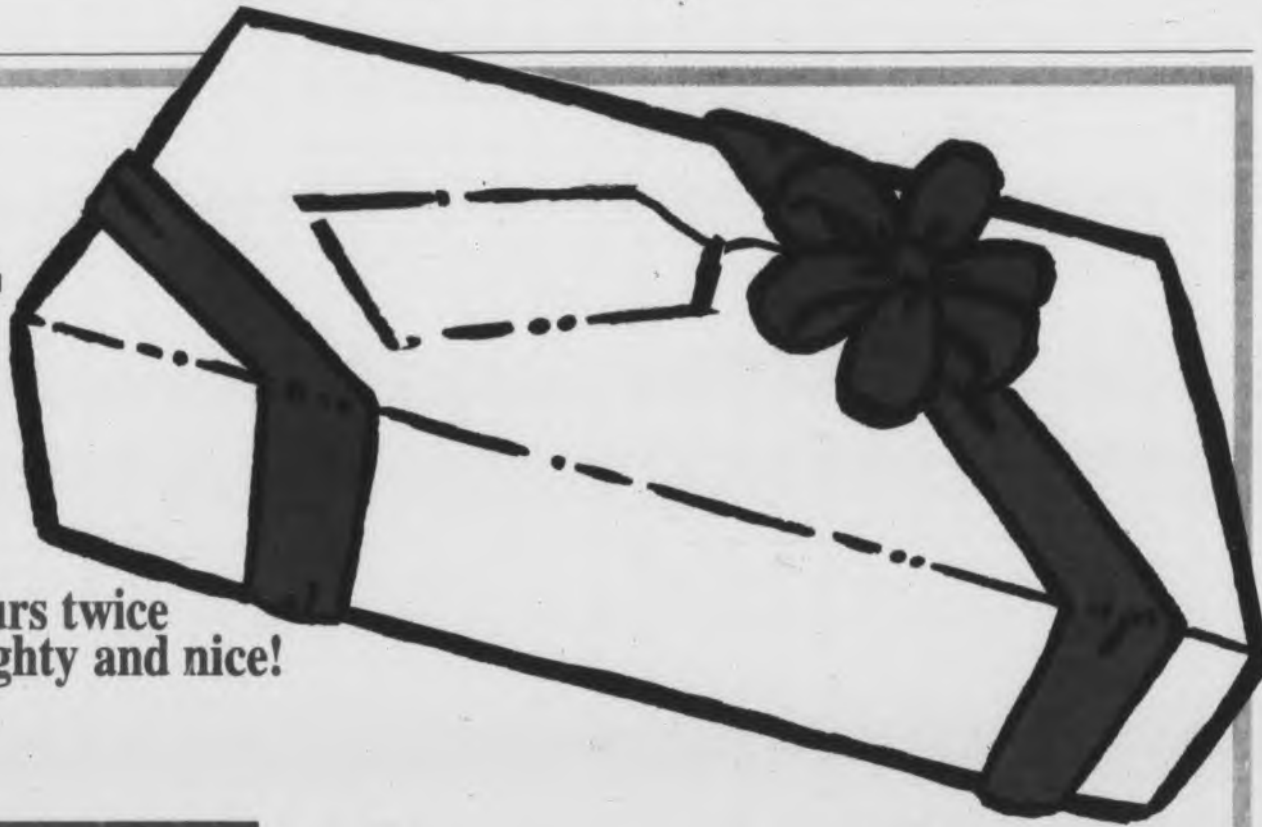
**New Happy Hours**  
3 p.m.-7 p.m. 10 p.m.-close

1/2 off Appetizers  
\$1 off mix drinks, bottle beer, and wine  
\$1 Draft and \$2 Brewtus

624-1224 Eastern Bypass  
Mon. - Sat. 11 a.m. - Midnight Sun. 11 a.m. - 11 p.m.



# Holiday Shopping Guide



You've made your lists, now check ours twice so you know where to shop for people naughty and nice!

## Jingle Bell Rockin'

- Eku Food Services 622-2179, Powell Building, catering for private or business parties. See page B2.
- Apollo's Pizza 623-0330, Second St. close to campus. See page A6.
- Tillerman's Deli 626-1800, 201 Water St., order one of our party trays. See page A5.
- The Big Easy 624-5314, First St., rent us for your graduation, Christmas, and mixer parties. See page B8.
- The Silver Star 624-8340, Main St.
- O'Riley's 623-7341, Main St, serving delicious food during your shopping day. See page B3.
- Rite-Aid 623-5811, Big Hill Avenue, best deals on discount liquor. See page A7.

## Guys, Gals, & Elves

- University Bookstore 622-2696, Center of campus, Eku clothing in every size. See page A3 and B7.
- Cut-Ups 623-5770, South Third St., haircare products for the family. See page A7.
- Merie Norman 624-9825, Carriage Gate, Vera Bradley Designs for every age. See page B4.
- Rite-Aid 623-5811, Big Hill Avenue, large stock of perfumes and colognes. See page A7.
- Stoneworth Shirt Company 623-6852, Richmond Mall, monogrammed clothing for anyone. See page B7.
- University Book & Supply 624-0220, Lancaster Rd., Eku sweatshirts, jackets, and children's apparel. See page B4 & B8.



## Stocking Stuffers

- University Bookstore 622-2696, Center of campus, huge selection of Eku related gifts. See page A3 and B7.
- Sera-Tec 624-9815, 292 S. Second St., earn extra cash for Christmas! See page A7.
- Merie Norman 624-9825, Carriage Gate Shopping Center, Sterling Silver. See page B4.
- University Book & Supply 624-0220, Lancaster Rd., golfballs, teddybears, keychains and more. See page B4 and B8.
- Recordsmith 624-5000, Across from Pizza Hut, posters, t-shirts, lava lamps, etc. See page A7.
- Picture Perfect 625-0077, Harper Square at Exit 90, film and cameras. See page A5.

Whether you're planning the perfect party or the perfect gift, we've got the places to go and the people to see!

## Gift Certificates

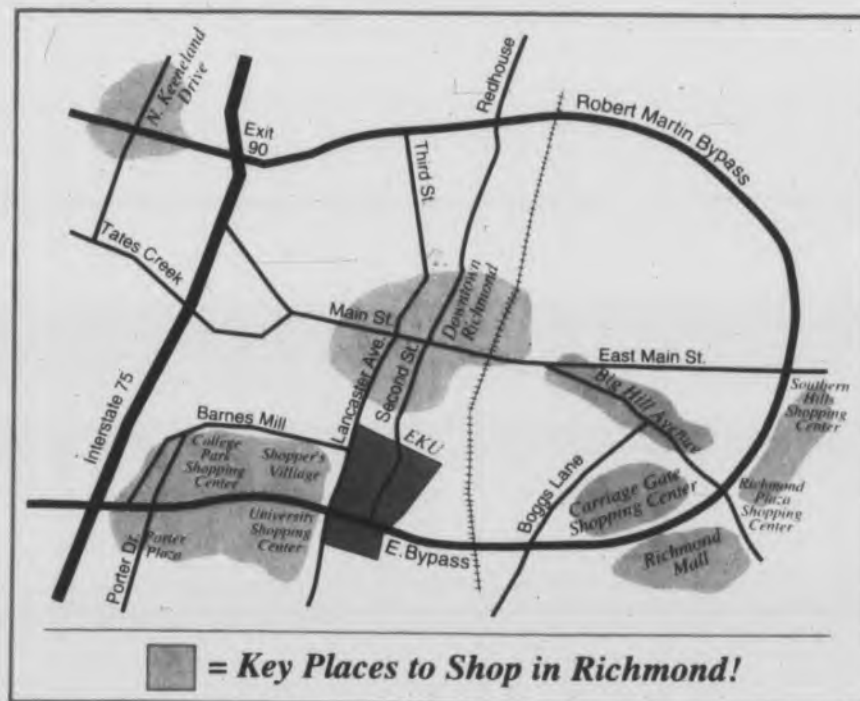
- Colonel Corner/Electric Beach 624-8773, 298 S. Second St., Start early for Spring Break! See page A7.
- Downtown Subway 624-9241, Corner of Second & Water See page B5.
- Bodean's Tattoos 624-0255, 120 S. Second St. See page A5.
- Tillerman's Deli 626-1800, 201 Water St. Suite #1, available in \$5, \$10, and \$20. See page A5.
- Main St. Chevron 624-1300, 421 West Main St. See page B7.
- Dairy Queen 623-3625, Big Hill Avenue. See page A5.
- Merie Norman 624-9825, Carriage Gate, available in \$10, \$25, \$50, and \$100. See page B4.
- Applebee's 624-1224, Carriage Gate, available in \$5, \$10, and \$25. See page A7.
- Rite-Aid 623-5811, Carriage Gate. See page A7.
- Arizona Jack's 624-1540, Carriage Gate. See page B5.
- Stoneworth 623-6852, Richmond Mall. See page B7.
- Little Professor Bookstore 623-0522, Richmond Mall, available in any amount. See page B7.
- University Book & Supply 624-0220, 1090 Lancaster Rd. See pages B4 and B8.
- Recordsmith 623-5058, Across from Pizza Hut, available in any amount. See page A7.
- Pizza Hut 623-2264, 360 Eastern Bypass, every student's favorite meal! See page B3.
- The Gift Box 624-0025, 131 N. Keeneland Dr., specializing in Christmas gifts. See page B4.



I've always wondered where that was...

Here's a tip to save you time:  
**Richmond is a big circle!**

Follow this map and plan the easiest way to get around Richmond. If you start on campus, you can easily hit downtown, Big Hill, Carriage Gate, Richmond Mall, the Bypass stores, and Exit 90 in the easiest way. With the gas money you save by not driving all over Richmond you can by yourself a present too!



► **Next week**

Wrap up your holiday shopping before you leave campus. We'll show you some gifts you can buy in Richmond and Berea.



# Accent

The Eastern Progress

► **Inside Sports**

Rondel Menendez and Tony DeGregorio celebrate Eastern's comeback victory over Eastern Illinois./B6

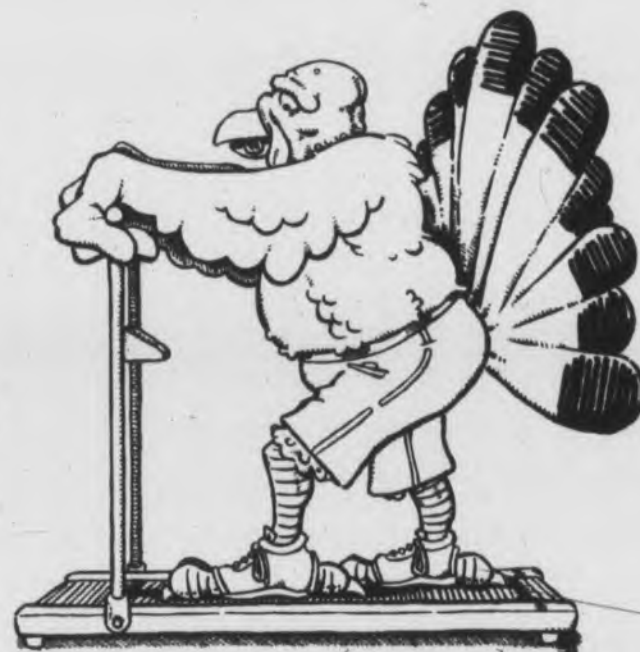


Rita Mackin Fox, editor

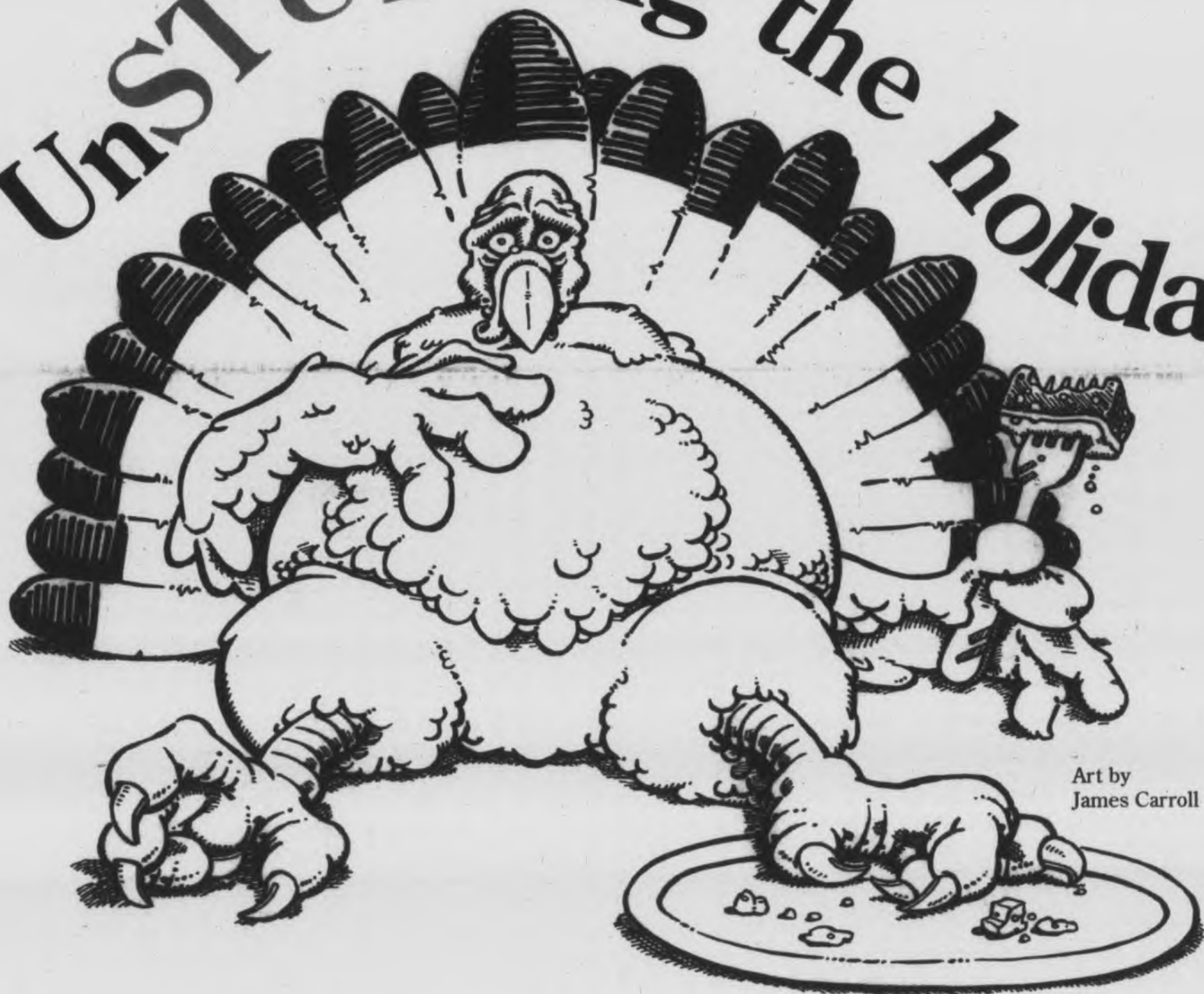
Thursday, December 3, 1998 **B1**



The road from stuffed to buff isn't easy, but your bod can survive the holidays if you start now. Here's how.



## UnSTUFFing the holidays



Art by James Carroll

**Cheap, easy to get fit on campus**

For students, faculty and staff with valid Eastern ID cards: Intramural Office programs: **Begley Weight Rooms** 11:45 a.m. to 10 p.m. Monday-Friday; 1 to 10 p.m. Saturday and Sunday. (Students are highest priority on first-come, first-served basis.)

**Begley Gym/Racquetball Court** 5:30 p.m. to 10 p.m. Monday-Friday; 1 p.m. to 10 p.m. Saturday and Sunday.

**Aerobics in Begley Gym** 6 p.m. to 7 p.m. Monday-Thursday.

**Alumni Coliseum (Darling Gym)** 5:30 p.m. to 10 p.m. Monday-Thursday.

Other facilities for everyone: **Greg Adams Tennis Facility** Call 622-2144 to schedule a court.

**Arlington Golf Course** (W. Main St.). Students may purchase greens fees for \$7 weekdays and \$14 weekends. Call 622-2207.

**Step Aerobics Class** (at F.M. Burke Wellness Center) 5 p.m. to 6 p.m. Monday-Thursday. Twelve classes for \$5. Students welcome in this class. Call 622-1694.

**Alumni Coliseum Pool** 7:30 p.m. to 9 p.m. Monday, Wednesday, Friday (recreational and lap swimming; immediate family invited). Faculty/staff only swim 11:30-1 p.m. Monday-Friday.

**Weaver Pool** 4 to 5:30 p.m. Monday-Thursday (lap swimming only; no children).

**Powell Bowling Lanes** 8 a.m. to midnight Monday-Friday; 4:30 p.m. to midnight Saturday and Sunday. Small fee per game and for shoe rental. Call 622-2190.

For faculty and staff only: **F.M. Burke Wellness Center** 11 a.m. to 1 p.m. Monday-Friday; 4 p.m. to 7 p.m. Monday-Thursday. Call 622-1694 to schedule health, nutrition and lifestyle assessments.

## Get moving, plan ahead to stay fit this year

By **RITA MACKIN FOX**  
Accent editor

After a long weekend of stuffing our faces and waists with thousands of unnecessary calories, more than a few of us are wondering how to survive the coming holidays without having to buy a new wardrobe in 1999.

No worries. Eastern's campus offers students, staff and faculty, many opportunities to work off those extra calories. Unlike the gyms and facilities around town, most are free or cost very little. "We usually have 400 to 500 people a day come through the Begley facility," said John Jewell, director of intramural programs. The intramurals office operates the Begley weight room, gym and racquetball facilities, which are available to all students.

Students have first priority, but faculty and employees can use the facilities when no students are waiting, he said. The facilities are available on a first-come, first-serve basis. The F.M. Burke Wellness Center, primarily available to staff and faculty, is offering step

aerobics classes open to students. Other facilities are available throughout campus. (See "Cheap, easy to get fit on campus.")

The newsletter of the American Institute for Cancer Research offers these tips on how to find an exercise program right for you:

- Choose activities you find enjoyable and invigorating. Avoid any exercise that causes pain.
- Exercise at your own pace, increasing the intensity when you feel comfortable.

- Keep up your energy levels by eating properly and getting adequate amounts of sleep.
- Vary your exercise routine to keep it interesting.
- Avoid adding significantly to life's complexity or stress—

choose activities that are convenient and fit your lifestyle.

- Look for exercise opportunities that provide social interaction and support, such as a walking club or aerobics class.
- Consult a physician before beginning any strenuous exercise activity. (Full-time students receive free medical visits at Student Health Services.)

■ If cost is a deterrent, seek out activities that don't require expensive equipment or facilities.

**Party strategies**

No amount of exercise is going to help if you overeat nonstop. To maintain your weight while running the gauntlet of holiday parties, you need to plan ahead.

In addition to increasing the time you spend in a regular exercise routine, the following strategies from Redbook magazine will help combat the onslaught of calories waiting to attack your willpower at the next party:

- Start now and whittle down your daily calorie intake so that you can afford to splurge at an occasional social gathering.
- Exercise hard before you go out to a party or holiday dinner.
- Have a glass of water for every glass of alcohol. Water has negative calories because it takes more energy to burn than it contains.
- If you dine out, bring home a doggie bag, rather than clean your plate.
- At the two or three special holiday meals you attend, eat your favorite foods first.
- Limit yourself to one trip to the buffet table.

With a party plan and a regular exercise workout, you can go from stuffed bird to buff bird this holiday season.

**More**

Being overweight or obese is no laughing matter. Find out if you are at risk for health or life problems because of your weight.

See Page B4



Brenda Ahearn/Progress

**April Little**, an Eastern alumna, began running while attending college. She still runs on and around campus, primarily to keep fit. "It's a good habit," she said.



## PROGRESS

**B**eginning tonight the Eastern music department will present the annual Madrigal Dinners. Keen Johnson Ballroom will be transformed into an early Renaissance Hall for feast and entertainment. Tickets are still available for this grand event.

### When

7 p.m. today through Saturday

### Where

Keen Johnson Ballroom

### Cost

\$24 Call 622-2512 or 622-2183.

# PICK

B2 The Eastern Progress Thursday, December 3, 1998

# What's On Tap

## TODAY

■ **SHOW**  
Holiday art show and sale  
Richmond Area Arts Council  
Runs through Saturday  
Begins at 9 a.m.

■ **CRAFTS**  
Christmas Craft Fair  
Demonstrations and sale  
Begins 11 a.m. today and Friday,  
9 a.m. Saturday Boonesborough  
State Park  
Call 527-3131 for details.

■ **FLOWERS**  
The Eastern Horticulture Club  
will hold its annual poinsetta sale.  
Today and Friday 12-1 p.m. and 4-  
5 p.m.  
Cost is \$5. Cash or check accept-  
ed. Call 622-2228 for details.

■ **SANTA HOTLINE**  
5:30-8:30 p.m. weeknights  
The Richmond Parks and  
Recreation Department and the  
Phi Kappa Tau Fraternity are  
working together to place phone  
calls from Santa to area children.  
Applications are available at the  
Richmond Parks and Recreation

Dept. Runs through Dec. 15.  
Call 623-8753 for more details.

■ **BASKETBALL**  
Lady Colonels vs. Tennessee-  
Martin  
6:30 p.m. Alumni Coliseum

Eastern vs. Tennessee-Martin  
8:45 p.m. Alumni Coliseum

■ **CHRISTMAS EVENT**  
Hummel Planetarium presents  
"Season of Lights"  
7:30 p.m. Thursday - Sunday  
3:30 p.m. Saturday - Sunday  
\$3.50 for adults, \$3 for senior citi-  
zens, \$2.50 for children 12 and  
under. Runs through Dec. 20.

■ **MUSIC**  
Tuba studio recital  
8 p.m. Brock Auditorium

## FRIDAY

■ **PARADE**  
Richmond Christmas Parade  
6 p.m. downtown

■ **MUSIC**  
Cain's Rage CD release party  
9 p.m. Firehouse Lounge

## SATURDAY

■ **BAZAAR**  
St. Mark's Christmas Bazaar  
9 a.m. - 1 p.m. St. Mark's Parish  
Hall

■ **CELEBRATION**  
Fourth annual Richmond  
Christmas Celebration  
9 a.m. downtown Richmond  
Includes guided walking tours of  
Richmond's historical places, free  
carriage rides, open houses and  
arts and crafts shows.  
Call 626-8474 or 623-8753 for  
more information.

■ **BASKETBALL**  
Lady Colonels vs. Murray State  
2 p.m. Alumni Coliseum

Eastern vs. Murray State  
4:15 p.m. Alumni Coliseum

## SUNDAY

■ **ART**  
BFA Exhibition Giles Gallery  
Opening Reception 2-4 p.m.  
Runs through Dec. 17.

## MONDAY

■ **VIDEO**  
9 a.m., 10:30 a.m., 12:30 p.m.  
Posey Theater, Stratton  
"Waterworks," an art video made  
by professional and student  
artists, will be shown.

■ **MUSIC**  
Brass Ensemble Concert  
8 p.m. Brock Auditorium

## WEDNESDAY

■ **SHOW**  
Coffeehouse show  
10 a.m. Fountain Food Court,  
Powell  
Features a caricature artist and  
drawings.

■ **MIXER**  
Cross Cultural Mixer  
3-4:30 p.m. Walnut Hall, Keen  
Johnson  
An opportunity to meet interna-  
tional students  
Sponsored by the College of  
Business

■ **CONCERT**  
Holiday song and dance concert  
8 p.m. Gifford Theatre

## ► Movies

**RICHMOND MALL 8**  
830 Eastern By-Pass 623-8215

I'll Be Home For Christmas (PG) 1:30,  
5:30  
Meet Joe Black (PG-13) 4:40, 8:30  
The Waterboy (PG-13) 1, 3:05, 5:10,  
7:15, 9:40  
Psycho (R)\*\* 12:35, 2:45, 5, 7:25, 9:45  
The Rugrats Movie (G) 12:45, 2:50, 4:55,  
7, 9:10  
A Bug's Life (G)\*\* 12, 2:15, 4:35, 7:10,  
9:25  
Home Fries (PG-13)\*\* 1:15, 3:20, 5:25,  
7:40, 9:50  
Enemy of the State (R) 11:30, 2:10, 4:50,  
7:30, 10  
Babe: Pig in the City (G)\*\* 12:15, 2:35,  
5, 7:20, 10

These movie times will begin on Friday 12/4. Box  
office opens at 4:15 p.m. on Fri. 12/4 and Mon.  
Thurs. 12/7-12/10. Open all day Saturday and  
Sunday 12/5 & 12/6.

University Shopping Center  
100 University Mall  
623-1199

**THE FUNNIEST  
COMEDY IN AMERICA**

**JERRY SPRINGER  
IN  
MADONNA**

Nightly 7:15 9:30 Sat/Sun 1:45 4:15 7:15 9:30

**STILL  
I KNOW  
WHAT YOU DID  
LAST SUMMER**

Nightly 7:00 9:30 Sat/Sun 1:30 4:00 7:15 9:30

**Signs  
AND MORE**  
623-6083

199 WAYNE DRIVE  
RICHMOND, KY  
(BEHIND PIZZA HUT ON THE BYPASS)

MUCH MORE THAN A SIGN SHOP!

- SIGNS
- BANNERS
- VEHICLE LETTERING
- CUSTOM TEAM APPAREL
- SHIRTS
- HATS
- LOGO DESIGN
- CAMERA READY ART

**Monday  
Night  
Football  
Specials**

**HAPPY HOUR**  
3 p.m. - 7 p.m.  
8 p.m. - Midnight  
**Madison  
Garden**  
152 Madison Ave. 623-9720

Don't Get Caught With Empty Pockets!

**CHECK EXCHANGE**  
NEED QUICK CASH?

**\$5 OFF**  
Your Next  
Payday Advance  
Some restrictions apply.  
\$100 minimum transaction.  
One per visit with coupon only.  
Expires 12/31/98.  
University Shopping Center  
Near Social Security Office  
623-1199

We're here EVERY Thursday.

The Eastern  
**Progress**  
www.progress.eku.edu



Tell Mom and Dad to enroll you in the best club on campus: **CLUB EASTERN**. With **CLUB EASTERN**, you get the best deals on campus. Meal prices start at \$399.00. So, don't hesitate. Join the best organization on campus: **CLUB EASTERN**.



Eastern Kentucky University  
**DIVISION OF FOOD SERVICES**



The Best Food  
on Campus!



**DON'T FORGET ABOUT  
OUR EXPLOSIVE PRICE  
CHANGES AT THE FOUNTAIN  
FOOD COURT.  
COME ON DOWN AND EN-  
JOY YOUR FAVORITE  
FOOD FOR A WHOLE LOT  
LESS!!**



Fine dining is offered to you thru  
**EASTERN CATERING.**

Are you in the need for a private or business  
dinner party, luncheon or brunch?  
Please call the catering professionals for an  
appointment.

622-2512

# Arts

Doug Rapp, editor

The Eastern Progress

Thursday, December 3, 1998 B3

## 'ENEMY OF THE STATE'

### Will Smith's latest movie runs too long

By DOUG RAPP  
Arts editor

What better time of year than the holidays to release a big, paranoid movie involving secretive government agencies, high-tech satellite technology and Will Smith? Smith and Gene Hackman will help raise your holiday paranoia with "Enemy of the State," a frantic look at surveillance technology and how it destroys personal privacy.

The movie opens with a rapid succession of digital and satellite surveillance imagery, and moves along quickly enough. Reynolds, played by Jon Voight, works for the National Security Agency (NSA) and has a congressman killed because he opposes a bill which would allow the government more freedom to use technology to spy on citizens.

In the same area where the assassination went down, a naturalist was filming wild geese. When the naturalist, Daniel Zavitz, goes home to watch his videotape, he realizes he's inadvertently filmed the killing. He calls a friend who puts out a left-wing publication and tries to rush a copy of the tape to him to get the truth out.

Within minutes, NSA is in full motion — using satellites to track the tape down, tapping phone lines and dispatching helicopters to crush the unlucky Zavitz. Here's where Smith gets jiggy with it. (Sorry.)

Smith, playing a young lawyer named Clayton Dean, is shopping for his wife's Christmas presents



Will Smith, above, plays Robert Clayton Dean, an attorney on the run from agents in the National Security Agency in "Enemy of the State." Gene Hackman plays Brill, an information broker, who helps Dean uncover the truth about why the NSA is after him.

when Zavitz, an old college buddy, runs through the shop with four or five NSA thugs hot on his heels. He doesn't have time to explain what's going on, but somehow Dean has time to slip him his business card. Zavitz gives a good chase until he meets an untimely death by traffic.

When the NSA examines Zavitz's body, guess whose business card they find? From here, Dean's life spirals into a digital hell as the NSA pulls out all the high-government trickery it can: tapped house and phone lines, phony newspaper stories smearing him, cancelled credit cards,

mysterious white vans ...

Dean doesn't know that they're after the videotape until he finally makes the connection with Zavitz dropping something in his shopping bag. The only problem is Dean doesn't know where the tape is but still has to spend all his time running around Washington, D.C., for his life.

Dean contacts his secret informant for legal information to see what the deal is with the men in black. (Sorry again.) The informant, played by Lisa Bonet, directs him to Brill, an information broker, played by Gene Hackman.

Brill, of course, used to work for the NSA and lets Dean in on all the surveillance dirty work and how to get rid of the six tiny hidden bugs in his clothes. Dean and Brill end up working together in an abandoned warehouse that's Brill's information center.

Somehow, the movie manages to tie together most of the loose ends, but it's so long that by the end you don't care how it ends, you just want it to end.

At two and a half hours, the movie outwears its paranoid feel. You just can't chase someone through streets, sewers and over hotel roofs for that long.



Photos submitted

### Critic's view

Jewel  
"Spirit"

Jewel Kilcher is a songwriting genius. It's too bad she didn't put her abilities to good use when writing her new record "Spirit." Unlike her excellent debut album "Pieces of You," these songs leave the listener expecting more.

The starkness showcased on "Pieces of You," as in the title track, "Little Sister" and "Daddy," is nonexistent on "Spirit," a record made up of mostly upbeat songs that has the Alaskan songsmith singing of the urgency of love and kindness.

In "What's Simple is True," she sings of growing old with a current love interest: "Twilight descends on our silhouette/ How soon spring comes/ how soon spring forgets."

In "Kiss the Flame" she again sings of love: "Show me a man who knows his own heart/ To him I shall belong."

Overall, this group of songs is weak and lacking in substance. "Spirit" is a disappointing sophomore effort from someone with such incredible talent.

Metallica  
"Garage Inc."

Garage Inc. is somewhat of an anthology and tribute album that chronicles the odyssey of one of the most formidable metal bands in the business.

Disc 1 contains 11 cover songs from bands which influenced Metallica in various ways, from the weariness of touring, as depicted in Bob Seger's "Turn The Page," to James Hetfield's obsession with the dark and chaotic, hence the inclusion of Nick Cave's "Loverman."

Disc 2 is a collection of earlier covers from the bands biggest influences, which included obscure British metal bands such as Diamond Head and Blitzkrieg, as well as metal legends Black Sabbath and Motorhead.

Longtime fans will be thrilled at the re-emergence of "Garage Days Re-Visited," Metallica's long out of print debut EP which makes up the first five songs on disc two. "Garage Days" features a young and brash Metallica that newcomers will appreciate.

"Garage Inc." is an ultimate show of respect to the people whose idealism helped make Metallica who they are today.

—Paul Fletcher

### Upcoming music...

- Dec. 3 Tuba Studio Recital, 8 p.m. Brock Auditorium.
- Dec. 6 Trumpet Ensemble, 8 p.m. Brock Auditorium.
- Dec. 8 Brass Ensemble, 8 p.m. Brock Auditorium.
- Dec. 9 Horn Studio Recital, 8 p.m. Brock Auditorium.
- Dec. 10 Student Percussion Recital, 8 p.m. Brock Auditorium.
- Dec. 11 Friday Student Recital, 1 p.m. Foster 300.

## Christmas concert to include Kustras

PROGRESS STAFF REPORT

Besides talking to university administrators and hosting his own radio show, President Bob Kustra is going to be doing some extracurricular talking for the holidays.

Kustra and his wife, Kathy, will be narrating the "Christmas Canticles," part of the music department's Christmas choral concert.

"We are excited to have the new president be a part of our

show," said David Greenlee, director of choral activities. "They [the Kustras] are very supportive of what we do."

The music department is presenting the Christmas Choral Concert at 3 p.m. Dec. 13, in Brock Auditorium.

The concert will feature the University Singers, the Eastern Concert Choir, the Eastern String Orchestra and the Eastern Brass Choir.

The concert will be played in two separate sections. The first

section will feature "Jubilate Deo" ("Day of Gladness") and David Pinkham's "Christmas Cantata."

The second section will feature the Richmond Area Youth Choir, a group of 4th, 5th and 6th graders.

The "Christmas Canticles" are four suites depicting of the life of Christ. The suites are titled "The Announcement," "The Promised Coming," "The Child in The Manger" and "The Life of Christ."

Greenlee said he encourages students to come out and enjoy

the show.

Greenlee said he is very excited about the upcoming concert as well as the coming year, which will include members of the music department performing at Carnegie Hall in New York.

Other programs remaining on the 1998 schedule include the annual Madrigal Dinners, several instrument recitals and a vocal recital.

Plans for next year include the annual Pops Spectacular on Saturday, March 6.

**Stressing over finals?**

**Chill out with a Large 1-topping pizza and breadsticks for only \$6.99**

**Pizza-Hut**  
623-2264

Campus Delivery Only  
Behind Denny's on the Bypass

**Where GPA stands for GREAT PARTY ATMOSPHERE!**

**Tonight is Thirsty Thursday**

\$2 pitchers til 9 p.m.  
\$4<sup>25</sup> Long Island Iced Tea

**Wednesday Ladies night**  
2 for 1 and \$1 cover for ladies

Open for lunch daily  
11 a.m.-2 p.m.  
DINNER  
5:30 p.m.- 8 p.m.  
5:30 p.m.- 7:30 p.m.  
with 1/2 price appetizers

**TAKE OUT AVAILABLE**

**Christmas Laser Fantasy**

A Laser Show for the Whole Family

Featuring the Christmas Music of "Mannheim Steamroller"

**Mondays & Tuesdays**  
Nov. 30 & Dec. 1  
December 7 & 8  
December 14 & 15  
December 21 & 22

Doors open at 7 p.m.  
All shows begin at 7:30 p.m.  
Reservations not required

Adults . . . . . \$4  
Students . . . . \$3  
Children under 12 . . \$2

EKU's Hummel Planetarium  
(606)622-1547

**Weighty matters**

**Cutting calories best way to battle bulge**

By RITA MACKIN FOX  
Accent editor

Less chance of jobs, less choice in dating. Less help from doctors, as many do not view obesity as a disease, according to the National Institutes for Health.

Being overweight can lead to a lifetime of discrimination. But the health risks are even greater.

"Every day, the number of people in America who die from obesity alone is the same as two fully loaded 747s crashing mid-air killing everyone on the two planes," according to a pamphlet provided by Dr. Wilbur Rader, a physician at Eastern's Student Health Services.

Dr. Rader has made the treatment of obesity a high priority in his practice and is in Texas this week attending a continuing-education seminar on the topic.

**"Fasting is dangerous and that weight loss is not healthy and cannot be maintained."**

Dr. Wilbur Rader, physician

"Doctors have been late in recognizing that obesity is at the root of many common diseases in Americans, including diabetes, high blood pressure and heart disease," he said.

"I ask patients to eat normally and keep a seven-day food journal of what they eat, including calorie counts for each item," Dr. Rader said.

On the second visit, he reviews the list and counsels the

patient on ways to cut calories.

One source of empty calories is soft drinks. "Water is better," Dr. Rader said. But if patients don't want to drink water, he encourages them to switch to diet drinks.

Next, it's time to calculate an ideal or target weight for the patient using the chart at right along with the Body Mass Index (BMI). The BMI is a standard measuring tool used to discuss healthy weight and obesity.

**How to calculate a safe weight-loss plan**

1. What's your present weight?
2. Use the chart at right to determine how many calories you need to maintain that weight.
3. Find your target weight using the Body Mass Index (BMI) chart on the Progress Web site at <http://www.progress.eku.edu/feats.htm>. BMI is a standard used to discuss healthy weight and obesity. To calculate your BMI yourself, multiply your weight by 700, then divide by your height in inches, then divide by your height in inches again.
4. Use the chart at right to locate the calories needed to maintain target weight.
5. Subtract answer #4 from #2.
6. To determine how much weight you will lose in a week

by reducing your daily calorie intake by the figure in #5, multiply that number by 7, then divide product by 3,500. It takes 3,500 calories more than the amount expended to put on one pound.

Example: A 5'1" person would calculate the number of daily calories to cut this way:

1. Present weight: 167
2. Calories needed daily to maintain weight: 2,250
3. Target weight: 132
4. Daily calories needed for person of target weight: 1,800
5. 2,250 - 1,800 = 350 (amount of calories to be saved per day)
6. (350 x 7) / 3,500 or 2,450 / 3,500 = .7 pounds lost per week

Source: Dr. Wilbur Rader, Student Health Services, Eastern Kentucky University

The maximum BMI target for men is 27; 25 for women. Even at those numbers, people have a 25-percent increased risk of premature death, according to literature provided by Dr. Rader. However, a BMI greater than 30 poses a 100-percent risk of premature death.

**'Little changes give big results'**

He recommends that his patients lose weight safely, rather than with a fad or crash diet. "Fasting is dangerous and that weight loss is not healthy and cannot be maintained," Dr. Rader said.

The body is delicately balanced on calories, he said. Less than one light beer or regular soda a day (or about 100 calories) greater than the amount of energy used daily will result in a weight gain of 10 pounds in a year. "Likewise, lose 100 calories a day for one year and lose 10 pounds," Dr. Rader said.

"Little changes give big results over time,"

he said.

Dr. Rader will discuss with patients developing an exercise routine, but there's no substitute for reducing calorie intake.

"A brisk walk from the Jones Building to Alumni Coliseum for a 175-pound person uses fewer calories than consumed with one coke or one light beer," said Dr. Rader, who defined a brisk walk as a mile in 15 minutes.

"If you are willing to commit to making positive changes in your health and life," Dr. Rader said to schedule an appointment with him.

There is no charge for office visits for full-time students at the university's infirmary. Call 622-1761 to make an appointment with Dr. Rader. The initial visit takes about 30 minutes.

What if a patient doesn't reach his or her ideal weight?

"Not reaching that is not failure," Dr. Rader said. "Failure is only if we do not try."

**Calories to maintain weight**

Wt.	Cals.
120	1,600
130	1,750
140	1,900
150	2,050
160	2,175
170	2,300
180	2,450
190	2,600
200	2,750
210	2,900
220	3,050
230	3,200
240	3,350
250	3,500

**Richmond Greenhouse**

**New Arrivals!**  
Official Licensed  
**Nascar Speedy Beans**  
Limited Edition Replicas of the top 5 Nascar Racers

Collect all 5 before they're gone!

- #24 Jeff Gordon
- #6 Mark Martin
- #88 Dale Jarret
- #5 Terry Labonte
- #3 Dale Earnhart

111 Westover Avenue • 623-3410

Discover a look to treasure

WITH A **FREE HOLIDAY MAKEOVER**



Update your look from "everyday" to "holiday" with Holiday Treasures - Merle Norman's luscious new palette of rich, true reds and passionate plums for eyes, cheeks, lips and nails. Drop by today for a look to treasure through the holidays...and beyond.

Carriage Gate Shopping Center • ECU Bypass  
Richmond, Ky. 624-9825  
**FREE GIFT WRAPPING!**

Independently owned and operated.  
**MERLE NORMAN COSMETICS**  
COSMETIC STUDIOS

**PRE-PAID PHONE CARDS**

**8.9¢ PER MINUTE**

*Pink Cadillac* Car Wash

612 Eastern Bypass  
Richmond, KY 40475

**THE BOTANY BAY HEMP COMPANY**

Ho Ho Ho Hemp!

The place with gifts For the coolest folks on your wish list.

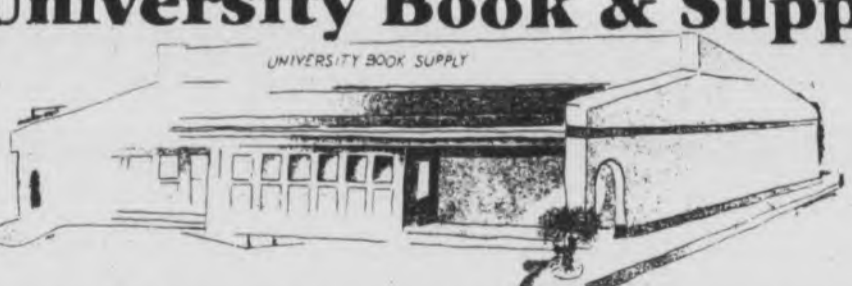
Even if it's just you...

623-HEMP Porter Plaza (Behind Derry's on the Bypass)

**CASH FOR YOUR USED BOOKS!**

BRING YOUR BOOKS TO:

**University Book & Supply**




WE BUY EVERY DAY - OPEN TILL 7:00 P.M.

USED TEXTBOOKS SAVE YOU MORE RECYCLE TODAY!

3 Full Time Buyers

PLUS \$ELL & \$AVE with Discounts to 50% Storewide!

WE BUY THE WIDEST RANGE OF BOOKS HARD OR SOFT BACK COVERS



**See Why Santa Shops at the GIFT BOX**

139 N. Keeneland off Exit 90, I-75  
Mon.-Sat. 9 a.m.-9 p.m.  
Sunday 12:30 p.m.-6 p.m.  
624-0025

SPECIALIZING IN MEMORIES

- Boyd's
- Byer's Carolers
- Dept 56 Villages
- Lizzie Highs
- All God's Children
- Seraphim Angels
- Fontanini • Fenton
- Crystal • Brass • Pewter
- Quilts • Coverlets
- Pictures • Lamps
- Candleberry, Yankee & Cake Candles
- Smells of Christmas
- Frames • Snowbabies
- Flower Arrangements & Wreaths
- Porcelain Dolls
- Turner Dolls • Pottery
- and Much, Much More!



# Activities

Staci Reid, editor

The Eastern Progress

Thursday, December 3, 1998 B5

## Hanging of the Greens canceled

One of Eastern's oldest holiday traditions ends

By STACI REID  
Activities editor

The first Hanging of the Greens ceremony was in 1930 and continued for 67 years — until this year.

Hanging of the Greens, one of the oldest traditions at Eastern, was canceled due to lack of interest. The decision was made last year by former Eastern President Hanly Funderburk.

"He (Funderburk), of course, had been to Hanging of the Greens," said Jeannette Crockett, dean of student life. "Sometimes it

had been embarrassingly sparse. I think it was a signal of lack of interest."

Barbara Sowders, professor of English, and Dan Robinette, dean of arts and humanities, co-directed the event since 1982.

"Last year, we said it would be our last year," Sowders said. "We felt we had worked at it for a long time."

Sowders and Robinette resigned from their duties as co-directors in 1997.

"What apparently happened was that they asked to be relieved," said Charles Whitlock,

vice president for administrative affairs. "Apparently it had become increasingly difficult to generate the student involvement, primarily because it comes so close to the end of the semester and exams."

"I know that for the last five to 10 years attendance has been very poor," Crockett said. "They were having a hard time getting people."

The Hanging of the Greens began as a model of the Christmas ceremony at Peabody College.

The ceremony is similar to the traditional English custom of decking the halls with holly and

evergreen.

Female students carried greens and wreaths. Ushers were chosen from fraternities on campus.

Attendees gathered in Walnut Hall and tall white candles were lit at the end of the aisles. Trumpeters announced the opening with "Hark the Herald Angels Sing" and a candlelight procession followed.

"It's a fine tradition that could be reinstated if there were strong enough interest," Crockett said.

Eastern President Robert Kustra has not made a decision about whether the tradition will be reinstated.

"We've come to no conclusion as to what to do," Kustra said. "I have not really had a chance to review that, so for now it stands."

**"I think it was a signal of lack of interest."**

*Jeanette Crockett,  
dean of student life*

## BSU crowns Alonzo McGill Mr. Ebony



Photos by Don Knight/Progress

Alonzo McGill, a senior business administration major from Coevum, Va., was crowned Mr. Ebony 1998 at the pageant held Nov. 20. Eleven Eastern students competed in various categories in the pageant which was sponsored by the Black Student Union. The theme of the evening was "A Black Man Emerging From the Storm." About 250 people attended the event.



Laion Lewis, a general business major from Lexington, competes in the sleep wear competition of the Mr. Ebony pageant.

### Large number in attendance for pageant

By JAQUIA SMITH  
Contributing writer

Eleven Eastern students competed in the 1998 Mr. Ebony pageant, but only one took home the title.

The title Mr. Ebony was obtained through a cumulative point system based on scores in various categories.

The categories included business wear, casual, sports wear, sleep wear, evening wear, ticket sells and the tuxedo impromptu question walk.

The winner of the Mr. Ebony Pageant was Alonzo McGill, a senior business administration major from Coevum, Va.

"Mr. Ebony will give me the chance to set an example by showing the kind of person I am, one who takes pride in everything I do," McGill said.

McGill would like to thank the Black Student Union for hosting the event and all of those who came out to support the activity.

The theme of the evening

was "A Black Man Emerging from the Storm." Refreshments were served and about 250 people attended, said Sandra Moore, director of multicultural affairs.

Between each of the events was a skit by the Creative Arts drama club.

The skits were about leadership, unity and issues such as hate and racism.

McGill received \$100, a detailed car wash, a plaque, dinner for two at Applebee's and a certificate.

The second place winner was Mandrae Allen, a freshmen broadcasting major from Louisville. He received \$50, a plaque and a certificate.

Third place was Antonio Brooks winning \$25 and a certificate. Each participant received a certificate.

The BSU would like to thank all of the participants, organizers, ushers, local business contributors, as well as those who attended.



Don Knight/Progress

The Madrigal Dinner, which has been an Eastern tradition for 28 years, gives guests a taste of life in 16th century England.

## Madrigal Dinner brings 16th century celebration to Eastern

By STACI REID  
Activities editor

Christmas carols have been ringing through the halls of Keen Johnson as the madrigal singers prepare for the seasonal dinner.

This is the 28th year of the Madrigal Dinner at Eastern. The audience is entertained by a group of 12 singers as they recreate a 16th century meal.

The costumes, menu, dance and song are authentic to 16th century England.

The madrigal singers are accompanied by instrumentalists from the music department.

"It's an honor to carry on a tradition," said David Greenlee, director of choral activities at Eastern. "There are very few schools who have that kind of tradition."

A madrigal is a song written for small groups which combine several voice parts to entertain.

Madrigals reached popularity during the Elizabethan age.

The event at Eastern consists of a seven-course meal and entertainment by the singers.

The food is also from the 1500's cuisine and is eaten at long, decorated tables.

Traditional drinks and dishes include the wassail bowl, plum pudding, a beef dish, fowl, Yorkshire pudding, a hard flour and yeast roll and flaming pudding.

The ballroom of Keen Johnson will be decorated like a banquet room in a castle.

"A lot of people use it (Madrigal) as a means to begin the Christmas season," Greenlee said. "People stand in line at 4 a.m. to get tickets, if that tells you anything."

In the 16th century, around Christmas each year all the lords in the land would have parties.

It was a time of fellowship, and the lord of that particular castle would provide a festive atmosphere in their honor.

Guests were treated to a huge feast and after sang Christmas carols.

Participants wear 16th century costumes which are ordered from New York by the music department.

"The costumes are elaborate, very ornate. The women all wear cone hats with veils," Greenlee said.

Singers entertain the guests with songs while the servers clear the table and bring the next course.

Heralding trumpets announce the beginning of each course.

They sing lighter songs through the dinner but after a 10-minute intermission they present a full-fledged Christmas concert.

"So many of the people who come to madrigal's would give anything for the opportunity to perform," said Candy Flynn, graduate student in choral conducting from Nashville, Tenn. "Three years ago I went to a performance, then the next year I tried out. It's exciting with the 12 voices and so much sound."

Greenlee said the festivities are geared toward the Christmas story from the Bible but is not meant to exclude any religious group.

"It is just the story that the world has known forever," Greenlee said.

"It's a lot of work but it's also a lot of fun. I really enjoy it," Flynn said.

For those interested in being a guest at the dinner, tickets are still available.

Tickets are \$24 and can be purchased at 16A in the lower level of Powell.

"For me personally, its one of my favorite concerts of the year," Greenlee said.

### Madrigal Dinner

**When:** 7 p.m.

Today through Saturday

**Where:** Keen Johnson Ballroom

**Cost:** \$24

**Tickets:** May be purchased 16-A Powell

**ARIZONA JACK'S**  
GRINDERS & PIZZA

624-1540

**YOU'LL LOVE JACK'S!**  
The only GRINDER in town,  
best PIZZA, great SALADS,  
hot CHILI DRAFT BEER

Jack will give you a  
**FREE ORDER OF FRIES**  
when you buy 2 half GRINDERS!  
You can't beat that deal!  
837 Eastern Bypass  
Carriage Gate Center, Near K-Mart

Coupon Expires 12/10/98.

1059 BERA RD.  
RICHMOND, KY.  
623-9580

Try our  
**GOLDEN FRIED SEAFOOD DINNER**  
OR  
**DELUXE SEAFOOD PLATTER**

**FROM \$3.99 AND UP**

For A Limited Time Only At Participating Captain D's

<b>SHRIMP &amp; FRIES</b> Bite Size Shrimp, Fries Hush Puppies & Cocktail Sauce One dinner per coupon. Not good with any other coupon or discount offer. Expires 12/10/98. 1059 Bera Road, Richmond, Ky.	<b>CHICKEN &amp; FRIES</b> Chicken, Fries, Hush Puppies & Sweet & Sour Sauce One dinner per coupon. Not good with any other coupon or discount offer. Expires 12/10/98. 1059 Bera, Richmond, Ky.
<b>FISH &amp; FRIES</b> Fish, Fries, Hush Puppies & Tartar Sauce One dinner per coupon. Not good with any other coupon or discount offer. Expires 12/10/98. 1059 Bera Road, Richmond, Ky.	<b>FISH &amp; CHICKEN</b> 1-Piece Fish & Chicken One dinner per coupon. Not good with any other coupon or discount offer. Expires 12/10/98. 1059 Bera, Richmond, Ky.

**THE GREAT LITTLE SEAFOOD PLACE. THE GREAT LITTLE SEAFOOD PLACE.**

**HO, HO, HO**  
Subway is the place to go to get those special people the perfect stocking stuffers.

Gift certificates from Subway show that you have great taste. Share the great taste of Subway.

**\$5** **Gift Certificate**  
Five U.S. Dollars

**SUBWAY**

**WE DELIVER 624-9241**  
Located on the Corner of Second & Water

# Sports

B6 Thursday, December 3, 1998

The Eastern Progress

Shane Walters, editor



## ► Progress MVP

Charlotte Sizemore, a sophomore from Hazard, contributed 23 points, nine assists and six rebounds in Eastern's 105-89 loss to the Xavier University Musketeers Nov. 28. Sizemore was 9-21 from the hardwood, while shooting 3-7 from the 3-point mark. Sizemore averaged 8.9 points and 3.9 rebounds per game last season.



Charlotte Sizemore scored 23 points against the Xavier University Musketeers.

## ► Sports brief

### Ward inks three players during early signing period

Eastern baseball coach Jim Ward has announced the signing of three players during the early signing period in Nov.

These include Mike Brown, 6-foot-3-inch, 190-pound outfielder from Centerville High School in Dayton, Ohio; J.R. Estes, 6-foot-4-inch, 210-pound first baseman from Waynesboro High School in Stuarts Draft, Va; and Robby Price, 6-foot, 175-pound middle infielder from Fairfield High School in Hamilton, Ohio.

"Mike Brown has all the outstanding skills to be an exceptional collegiate player. He has good size, throws well and will be an outstanding offensive and defensive player," said Ward. "J.R. Estes is a power-hitting left-handed hitter who will be a productive middle-of-the-order offensive player."

"And Robby Price is a middle infielder who loves to play and knows how to play. He is an aggressive player with good hands and excellent arms who can play all the infield positions. He is also a solid hitter at the plate," said Ward.

"This early signing class is the most talented since I've been at Eastern," Ward said. "These are the type of players we need to achieve our goal of OVC championships. The only recruiting goal we have now is to strengthen our pitching staff."

### Baseball staff holding meeting for Diamond Girls

The Colonel baseball coaching staff is holding a meeting for any female students interested in being named Diamond Girls for the 1999 Colonel squad.

Responsibilities would include acting as a campus guide for prospects and various activities at home Colonel baseball contest.

Any female interested should meet 4:30 p.m., Tuesday at Alumni Coliseum, room 101.

Any interested sororities may use Diamond Girl activities as a service project.

## ► Schedule

### Men's Basketball (1-2)

■ vs. Tennessee-Martin, 8:45 p.m., tonight, Alumni Coliseum

■ vs. Murray State, 4:15 p.m., Saturday, Alumni Coliseum

■ vs. SEMO, 8:30 p.m., Thursday, Cape Girardeau, Mo.

### Women's Basketball (1-2)

■ vs. Tennessee-Martin, 6:30 p.m., tonight, Alumni Coliseum

■ vs. Murray State, 2 p.m., Saturday, Alumni Coliseum

■ vs. Coastal Carolina, 2 p.m., Dec. 12, Conway, S.C.

### Indoor Track

■ University of Kentucky Kickoff Meet, Dec. 11, Lexington

# Four football Colonels suspended



Jon Denton is thinking about forgoing his senior season and declare his eligibility for the NFL Draft.

## UNLV transfer thinking about declaring eligibility for NFL Draft

By DANIEL REINHART  
Assistant sports editor

Eastern's football season took a U-turn before its contest against the Eastern Illinois Panthers as four players were suspended for the final game in which Eastern beat Eastern Illinois 28-24.

Senior offensive tackle Jason Worley, junior quarterback Jon Denton, junior defensive back Isaac

Carter and sophomore wide receiver Anthony Boggs.

The four players were suspended by head coach Roy Kidd because they violated their curfew the Thursday before the Eastern Illinois contest.

But Kidd said the suspension was just for the one game.

"As far as I'm concerned, it's all over with," Kidd said.

The four players were scheduled to meet with Kidd individually, but he

said Denton has yet to come in to talk with him.

Also, in an interesting turn of events, Denton told the *Courier-Journal* that he was thinking about declaring his eligibility for the NFL Draft.

Denton told the *Courier-Journal* that he was 50-50 on whether he was going to be back next year. Denton was unavailable for comment.

The University of Nevada-Las Vegas transfer started 10 of the Colonels' 11 contests and threw for 1,844 yards and 18 touchdowns.

Denton completed 119 passes of 217 attempts in his first season in a maroon and white uniform. Denton

was not on the sidelines to witness his team's victory over Eastern Illinois.

"Each player's status for next season will be evaluated on an individual basis in the next few weeks," Kidd said.

Kidd and the coaching staff had a final meeting with the players Tuesday to lay out the weight training and fitness program for the off season.

Kidd will start the heavy part of the recruiting season, as he begins looking at players from Mississippi, Alabama, Georgia, Kansas and Kentucky.

"Our three biggest needs are offensive linemen and defensive interior linemen," Kidd said.



Sophomore quarterback Waylon Chapman passes down field while offensive lineman Charles Watkins provides coverage against Ryan Pace of Eastern Illinois. Chapman complete 13-of-28 passes for 255 yards.



Photos by Don Knight/Progress

Junior linebacker Brad Folke and senior defensive tackle Dedric Campbell tackles Rhasaan Smith of the Eastern Illinois Panthers.

# Eastern ends season with a winning record

By SHANE WALTERS  
Sports editor

Around this time last season, head football coach Roy Kidd was being held on his players' shoulders next to the Ohio Valley Conference championship trophy after his Colonels dismantled the Eastern Illinois Panthers 49-7 in Charleston, Ill.

However, the glow of last season's OVC championship has diminished, and a new champion has been crowned.

The Colonels extended their streak of consecutive winning seasons to 21 after rallying for a 28-24 victory over Eastern Illinois Nov. 21. Despite Eastern's impressive victory over the Panthers, the Tennessee State Tigers had already captured the OVC crown before the Colonels contest with Eastern Illinois had even been decided.

The Tigers represented the OVC against powerhouse Appalachian State Saturday in the first round of the NCAA Division I-AA playoffs. The Mountaineers stood tall and gave State a 45-31 loss, ending the Tigers' eight-game winning streak.

Eastern (6-5 overall, 4-3 in OVC) trailed by 10 early in the

fourth quarter against Eastern Illinois, but sophomore quarterback Waylon Chapman connected on scoring passes of 62 and 26 yards to senior Rondel Menendez to pull out the win.

"I just felt like if we got that last chance we were going to do it," Kidd said. "Chapman was throwing the ball so well. He was staying in the pocket well and we were getting people open. We gave him protection and gave him time."

The final touchdown pass came with just 34 seconds remaining.

"When I saw Rondel (Menendez) wide open in the end zone, I knew we were going to win," said Chapman.

Menendez had seven catches for 153 yards in the contest, and finished his career ranked second in the OVC in career receiving yards (2,902) and 7th in career receptions (145). He also tied the Eastern season record with 11 touchdown catches and set a new mark for career touchdown grabs with 27.

Chapman, who was starting in place of suspended Jon Denton, completed 13-of-28 passes for a

See Football/Page B6

## ► Men's Basketball

# 1-2 Colonels prepare for two-game OVC home stand

By SHANE WALTERS  
Sports editor

In a state obsessed with Hoosiers, the Colonels struggled against an unusual Indiana mascot — a Sycamore.

The Indiana State Sycamores jumped out to a 17-0 lead to start last Tuesday's game against coach Scott Perry's Colonels, and never looked back. The Sycamores (3-2) downed the Colonels (1-2), 78-54.

Junior Abasi Thompson led ISU with 18 points, while freshman Djibril Kante added 16. Sophomore guard Darius Acuff led all scorers with 20 for the Colonels.

Indiana State held Eastern to 14 points in the first half. It is the second game in a row where the Sycamores have not allowed an opponent to score 15 points in the first half. (ISU held Butler to 11.)

"We come out and play with a lot of defensive activity at the

beginning of games," said ISU coach Royce Waltman. "They (Eastern) are a perimeter shooting team, and we didn't give them any looks."

The Colonels shot 33 percent from the field, while ISU shot for 52 percent. Eastern pulled to within 14 points four minutes into the second half, but ISU came back with a 10-2 run to solidify the victory.

"You cannot come out and play from the start like we did against Indiana State. You can't just show up and expect to win," Perry said.

Eastern got its first win of the season with a 99-97 victory against the Belmont University Bruins Nov. 19, a relatively unknown team, who is playing just its second season of NCAA Division I basketball.

However, following Eastern's close two point-win, Belmont

returned home and took perennial Ohio Valley Conference powerhouse and pre-season favorite Murray State to the wire, before losing 76-69, making the Colonels' first notch in the victory column a quality win.

Freshman guard Whitney Robinson led Eastern with 26 against Belmont, followed by junior forward Darick Mattox with 22 and sophomore guard Darius Acuff with 19.

"We made some mistakes toward the end, but what I liked is that this team never hung their heads. They never felt like they were going to lose," Perry said.

The Colonels open a two-game OVC home stand tonight, to begin its 18-game Ohio Valley Conference schedule, with an 8:45 p.m. contest against Tennessee-Martin. The Colonels close their home-court advantage against the Murray State Racers, 4:15 p.m. Saturday.



Don Knight/Progress

Sophomore forward Ronnie Griffin palms an ally-ooop for a basket during the Colonels home opener against Belmont University Nov. 19.

# Inman's Lady Colonels start OVC action tonight

By DANIEL REINHART  
Assistant sports editor

Before the season started, women's basketball coach Larry Joe Inman said he didn't know whether to coach a basketball team or start a nursery, referring to how young his team was. Everyone laughed, but maybe they shouldn't have.

Over the Thanksgiving break, the young Lady Colonels opened their season with two losses and one win. And when they lost, they lost big.

In its opener Eastern was dominated by Kansas State 102-68. It was Eastern's worst regular season loss in its last 52 games.

The Lady Colonels showed their first-game jitters shooting only 33.3 percent from the field and only 15.4 percent from three-point range.

But the Lady Colonels warmed up their shooting touch for their home opener, beating Miami Ohio 83-69.

"If anything, this should give our team confidence as far as offense goes," Inman said.

The offense was led by Marla Gearhart's 19 points and Candice Finley's 13 points and tough inside rebounding.

"Candice's key was her 11 rebounds," Inman said. "We call her the warrior because she is always on the ball and getting after it."

The Lady Colonels improved from their poor opening game by shooting an impressive 40.8 percent from the field. Eastern also out-rebounded the Redhawks 48 to 35.

But with youth comes inconsistency. On Saturday, Xavier scored 105 against the Lady Colonel defense en route to handing Eastern its second loss of the year.

It was the 10th most points a team at Eastern has ever given up. It was the most points given up since Missouri scorched Eastern for 107 points in the 1994-95 season.

The offense was once again hot, scoring 89 points. Charlotte Sizemore scored a game-high 23 points, dished out nine assists and grabbed six rebounds.

Going into the game, Inman had doubts about his defense.



Freshman guard Mikki Bond goes up for a rebound against a Miami Ohio player during the Lady Colonels' home opener Nov. 21.

Don Knight/Progress

"We have not worked as much on defense as we have on putting in our new offensive set," Inman said. The Lady Colonels will march into conference play tonight when

UT-Martin comes to town. The Martin game is the first of a two-game home stand which concludes with Murray Staters Saturday.

AD INDEX	
Apollo's	A6
Applebees	A7
Arizona Jacks	B5
Athletic Office	B7
Big Easy	B8
Blue Grass State Games	A7
Bodean's	A5
Botany Bay	B4
Bourbon County Schools	A4
Captain D's	B5
Check Exchange	B2
Church Directory	A4
Cutups	A7
Dairy Queen	A5
EKU Bookstore	A3, B7
Electric Beach	A7
Endless Summer Tours	A4
First Gear	A4
Food Service	B2
Gift Box	B4
KY. Collision Center	A7
Little Professor	B7
Madison Garden	A7, B2
Main Street Chevron	B7
Mall Movies	B2
Merle Norman	B4
O'Riley's	B3
Oceanfront	A6
PC Systems	A5
Picture Perfect	A5
Pink Cadillac	B4
Pizza Hut	B3
Planetarium	B3
Recordsmith	A7
Richmond Greenhouse	B4
Rite Aid	A7
ROTC	B8
Sera-Tec	A7
Signs & More	B2
Spring Break Travel	A4
Stoneworth	B7
Subway	B5
Tillerman's	A5
UBS	B4, B8
University Cinemas	B2

## Stoneworth Shirt Company

### Gifts for All Occasions

- Sports, Wildlife, Farm & Vehicle Designs •
- Variety of Lettering Styles including Greek •
- School Logos •
- Occupational designs •
- Complete Inventory of T's, Hats, Shirts, Jackets & More •

Richmond Mall  
Mon.-Sat. 10 a.m.-9 p.m.  
**623-6852**

### HARDCOVER RELEASES

**The Southern Living Cookbook**  
"More Than A Recipe Book"  
This complete guide to cooking contains over 1300 recipes, over 450 photographs and extensive information about cooking.

- Safe Cooking Tips
- Party Planning
- How To Procedures
- Garnishing and Presentation Tips

**\$29<sup>95</sup>**

**Atlas of Kentucky**  
Documents the enormous changes that have taken place in the state and presents current information on Kentucky's land, people, social and economic life.

**\$39<sup>95</sup>**

**LITTLE PROFESSOR BOOK CENTER**  
We help you find books you'll love.

Mon - Sat 10 - 9  
Sun 12:30 - 6  
Richmond Mall **623-0522**

## Cash for Books. Eastern Kentucky University Campus Bookstore "Center of Campus"

<b>Monday</b>	<b>thru</b>	<b>Friday</b>
<b>December 7</b>		<b>December 18</b>

Mon. - Fri., Dec. 7-11..... 9 a.m. to 4 p.m.  
Saturday, Dec. 12 .....9:30 a.m. to 12:30 p.m.  
Mon. - Fri., Dec. 14-18 ..... 9 a.m. to 4 p.m.

EKU Danville Center Dec. 15, Noon - 6 p.m.  
EKU Manchester Center Dec. 16, Noon - 6 p.m.  
EKU Corbin Center Dec. 17 Noon - 6 p.m.

Eastern Kentucky University Alumni Coliseum  
"Front Entrance" Dec. 14 - 18, 9:30 a.m.. - 5 p.m.



**Book Buyback.  
It Pays to Be Part of It.**

We buy books that can be reused here... or on other campuses.

## Main Street Chevron

421 West Main Street  
Richmond, KY 40475

**THE PERFECT STOCKING STUFFER**  
A Healthful Holiday Treat From "TCBY"



"TCBY" Frozen Yogurt Holiday Gift Certificates are making hard to please family and friends a thing of the past. The best thing about gift certificates from a "TCBY" store is that they can be used towards the purchase of all your favorite "TCBY" Frozen Yogurt Treats, like waffle cones, pies, Winter Warner® treats and much more. So stop by a "TCBY" store and say goodbye to holiday shopping hassles and hello to a happy holiday season with "TCBY" Frozen Yogurt Holiday Gift Certificates.

**624-3000**



**Colonels Conference Tip-off**



**Thursday, December 3**

**Lady Colonels 6:30 pm**  
**Colonels 8:45 pm**



**Saturday, December 5**



**Lady Colonels 2:00 pm**  
**Colonels 4:15 pm**

**REDI MART Ticket Offer**

Ticket Information:  
126 Alumni Coliseum  
Call (606) 622-2122 or 1-800-262-4141  
www.athletics.eku.edu

**FREE ticket with purchase of:**

Nestle's Pretzel Flipz Family Size Bag or Gas purchase 2 for \$2.99 (\$5.00 minimum)



# Menendez, Hopson named first-team All-OVC

PROGRESS STAFF REPORT

The Eastern football squad had seven players listed on either the first team, second team or honorable mention 1998 All-Ohio Valley Conference teams.

Named first-team All-OVC were senior record-breaking wide receiver Rondel Menendez and senior offensive tackle Tyrone Hopson, both All-American candidates.

Menendez, who also earned first-team All-OVC laurels in 1997, finished his four years at Eastern as its all-time leader in pass receiving yards (2,990) and touchdown catches (27).

Menendez finished his career as a Colonel just four catches away (150) from Eastern's career leader in pass receptions, Bobby Washington (1994-97, 154).

He finished the 1998 season with 52 catches for 1,032 yards and 11 touchdowns.

Hopson, a two-time All-OVC player, graded out at 85 percent this season, while playing at less than full strength with an injured shoulder.

Hopson has been invited to play in the Hula Bowl on the Hawaiian island of Maui in January.

"Both these guys were key members of our team for four years and will be missed next season. They certainly deserve this type of recognition."

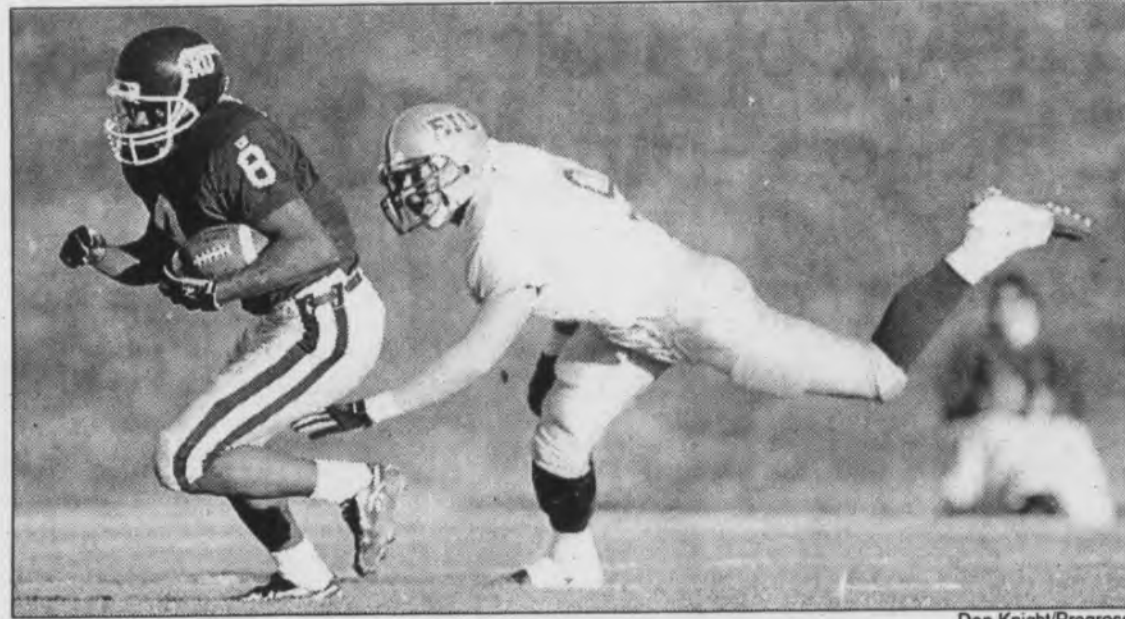
**"Both these guys were key members of our team for four years and will be missed next season. They certainly deserve this type of recognition."**

Roy Kidd, football coach

type of recognition," said head football coach Roy Kidd.

Second-team All-OVC choices for the 1998 Colonels were junior offensive guard Josh Hunter, senior punter Stephen Brown, junior defensive tackle Jason Muchow and junior free safety Shawn Gallant.

Making honorable mention all-conference this season was 6-foot, 213-pound senior linebacker Charles Tinsley, of Cumberland.



Don Knight/Progress

Senior wide receiver Rondel Menendez sprints downfield while avoiding an opposing Eastern Illinois player. Menendez had seven catches for 153 yards and finished his career ranked second in the OVC in receiving yards.

## Football: Chapman led Colonels to victory

From B6

career-high 255 yards. Tailback Derick Logan rushed for 112 yards on just nine carries and scored his first touchdown of the year.

Junior linebacker Brad Folke led the Colonels' defense with 14 tackles, while defensive back Tony Woods added 11 tackles, two pass breakups and an interception in the end zone on the game's final play.

Fifteen Eastern seniors played their last game in Colonel maroon and white at Roy Kidd Stadium against Eastern Illinois. With

such enormous shoes to fill, Kidd and his staff have already begun recruiting for next season. Five of the 15 players lost will be veteran offensive linemen.

"That's what we're looking for," said Kidd, "linemen on offense and defense, especially offense. We need help their first year. That's why we're looking for three jucos or I-A transfers."

After being suspended for Eastern's final contest against the Panthers, Jon Denton has hinted that he might enter the NFL Draft and forgo his senior season. If Denton decides to leave, Kidd

may find himself searching for other recruits to fill the void.

"Maybe one wide receiver, one running back, some defensive backs, one or two linebackers, one quarterback, two if Denton leaves," said Kidd.

The Colonels victory over the Panthers gave Eastern a fourth-place finish in the OVC standings and prevented Kidd's Colonels from suffering its first losing season in 16 years.

"Our whole motto today was to come out and win one for the seniors," Logan said. "No one ever gave up."

## ► Cross Country

# Khayr finishes 67th at NCAA

PROGRESS STAFF REPORT

Senior Mohammed Khayr, from Fairfax, Va., represented Eastern recently in the NCAA Men's Cross Country Championship Meet in Lawrence, Kan., and just missed making All-American status.

Khayr placed 67th in a time of 31:44 with the top 64 runners designated NCAA Division I All-American.

"Mo ran a strong race, but he got a little too far back in the beginning and didn't have enough time to catch up," said Eastern head cross country and track coach Rick Erdmann.

Khayr qualified to compete in the NCAA Finals by virtue of his eighth place finish at the NCAA Region III meet at Furman University in Greenville, S.C., earlier in November.

In the NCAA finals, the University of Arkansas won the team championship with a score of 67. The university of Colorado's Adam Goucher won the individual championship with a time of 29:26.90.

## Pre-Registered for Spring Courses? Reserve your books now and save!



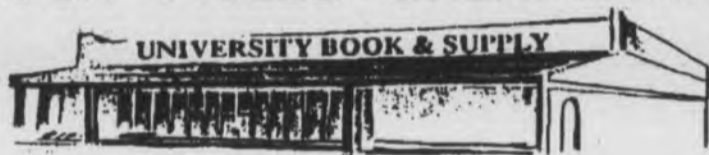
- Avoid the long lines
- Get first choice on Used Books
- Avoid all the hassle - No waiting
- Plus a FREE gift!

Just Off Campus  
624-0220

You can reserve your books in person or on the net - log on today!

### THE UBS ADVANTAGE

Log on: <http://www.ubs-eku.com/>  
FOR FUN - PRIZES - GREAT SAVINGS!



## UNIVERSITY BOOK & SUPPLY

WE BUY EVERY DAY - OPEN TILL 7 P.M.  
USED TEXTBOOKS SAVE YOU MORE

The Students Store • Just Off Campus

Serving Eastern Kentucky University

- More USED Textbooks (to save you money)
- Visa and Mastercard Accepted
- Student Employees
- FREE Check Cashing
- Fast Check Out
- Year-Round Book Buying
- Storewide Discounts

INSTANT CASH ON BOOKS... and it doesn't matter where you bought them.

### UBS Book Reservation Blank

(All books fully returnable)

Dept.	Course Number	Sec.	Name _____
			Home Address _____
			Street _____
			City _____ State _____
			Local Address if available _____
			I Prefer • Good Used • New Books Circle One
			SIGNED _____

COMPLETE AND RETURN TO UBS BEFORE YOU LEAVE CAMPUS.



## BELIEVE IT OR NOT, THIS GUY IS IN CLASS.

Excitement and adventure is the course description, and Army ROTC is the name. It's the one college elective that builds your self-confidence, develops your leader-

ship potential and helps you take on the challenge of command.

There's no obligation until your junior year, so there's no reason not to try it out right now.



### ARMY ROTC

THE SMARTEST COLLEGE COURSE YOU CAN TAKE

For details, visit 522 Begley Building or call 622-1215



# THE BIG EASY

must be 18 or older to enter

FRIDAY, DEC. 4th

**BONE PONY**

SATURDAY, DEC. 5th

**PEACE IN THE JONES**

DRINK SPECIAL

**WEDNESDAY DOLLAR DAYS**

\$1 TO ENTER, \$1 DRINKS,

& \$1 TO EXIT

Call us to arrange your private parties

First Street • 624-5314



# Rooster<sup>®</sup> SPRING BREAK Sweepstakes

WIN ONE of 5 TRIPS to  
Cancun, South Padre Island, Puerto Vallarta,  
Panama City, Daytona Beach!

TAKE A DIP WITH THE ROOSTER.



Rooster. It Lasts.



WARNING:

THIS PRODUCT  
MAY CAUSE  
MOUTH CANCER

# WIN ONE of FIVE TRIPS to

**Cancun, South Padre Island, Puerto Vallarta,  
Panama City, Daytona Beach!**



## SPRING BREAK SWEEPSTAKES

### OFFICIAL RULES

1. No purchase necessary. To enter, complete this Official Entry Form or on a 3 1/2" x 5" post card write your name, address, age, signature, date, and mail in an envelope to:

**Rooster Spring Break '99 Vacation Sweepstakes**  
Suite 23000  
251 Main Street  
Stamford, CT 06901-2928

2. Enter as often as you wish, but each entry must bear the name of only one entrant and be mailed separately and received by January 18, 1999, when the Sweepstakes ends. Entry forms become the property of United States Tobacco Sales and Marketing Company Inc. ("USTSM"). Not responsible for lost, misdirected or late mail. No mechanically reproduced, illegible or incomplete entries will be accepted.

3. Sweepstakes begins December 1, 1998 and is open to legal residents of the U.S., 18 years or older at the time of entry. Employees of United States Tobacco Sales and Marketing Company Inc., its parent and affiliates, distributors, advertising and promotion

agencies, fulfillment vendors and their immediate families are not eligible. Void in Puerto Rico, Michigan and where prohibited by law or regulation.

4. There will be five (5) Grand Prize Winners who will each receive a trip for two to ONE of the following Spring Break '99 destinations of their choice: Daytona Beach, Florida; Cancun, Mexico; Puerto Vallarta, Mexico; Panama City, Florida or South Padre Island, Texas. Travel must be completed by April 15, 1999 or prize will be forfeited.

Prize consists of: round-trip coach air transportation for two (2) between selected destination and major airport in U.S. nearest Winner's residence; 6-days/5-nights double occupancy hotel accommodations and \$250 cash, (approx. retail value \$2,500). Cost of meals and other charges not expressly provided for herein are the sole responsibility of the winner(s). Winners will be selected in a Random Drawing on January 22, 1999, by Custom Data Systems, Inc., an independent judging organization, whose decision is final. By entering the sweepstakes, all entrants agree to be bound by these official rules and the decision of the judges, which are final.

5. No substitution or transfer of prize by winner(s) permitted. USTSM reserves the right to substitute a prize of equal value. All federal, state and local taxes apply and are the sole responsibility of the winner(s).

6. Odds of winning are determined by the total number of entries received. Winners will be notified by mail. Winners and travel companions will be required to sign an Affidavit of Eligibility and to release in writing USTSM and its affiliates, employees and agents from any liability related to or arising out of this promotion or the prize awarded, which must be returned in two weeks or prize(s) may be forfeited. By accepting prize, winner consents to use of his/her name and likeness for promotional purposes without further compensation. Grand Prize winner's travel companion must be at least 18 years of age or older.

7. For name of the winner(s), send a self-addressed, stamped number ten (10) envelope to: Rooster Spring Break Sweepstakes, Suite 23000, 251 Main Street, Stamford, Connecticut 06901-2928, by January 18, 1999.

# WIN ONE OF 5 TRIPS & TAKE A DIP WITH THE ROOSTER AT SPRING BREAK!



PICK A SPRING  
BREAK & TAKE  
A DIP WITH  
THE ROOSTER

Please fill out the following information, including the red box, in order to be eligible for the sweepstakes and future offers:

- Do you use moist snuff? Yes No  
If yes... a) How many cans per week? \_\_\_\_\_  
b) Brand used most? \_\_\_\_\_ c) What flavor is that? \_\_\_\_\_  
d) Is that ? (circle one) fine cut/long cut
- Do you use loose leaf chewing tobacco?  
Yes No If yes a) How many pouches per week? \_\_\_\_\_  
b) Brand used most? \_\_\_\_\_
- Do you smoke cigarettes? Yes No

Name \_\_\_\_\_  
Address \_\_\_\_\_  
City \_\_\_\_\_  
State \_\_\_\_\_ Zip \_\_\_\_\_  
Area Code and Telephone \_\_\_\_\_  
College Name \_\_\_\_\_

TODAY'S DATE (REQUIRED): MONTH DAY YEAR

I CERTIFY THAT I AM \_\_\_\_\_ YEARS OF AGE\* AND THAT I WANT TO RECEIVE OFFERS, PREMIUMS, COUPONS OR SMOKELESS TOBACCO IN THE MAIL. I UNDERSTAND THAT GIVING FALSE INFORMATION IN ORDER TO ACCEPT THIS OFFER MAY CONSTITUTE A VIOLATION OF LAW.

SIGNATURE (REQUIRED): \_\_\_\_\_

\*OFFER NOT AVAILABLE TO MINORS. AGE, SIGNATURE AND DATE REQUIRED.

## Check One of 5 Destinations

South Padre Island

Panama City

Cancun

Puerto Vallarta

Daytona Beach



Offer Expires: 1/18/99

ZY890



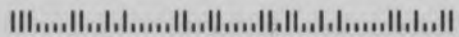
NO POSTAGE  
NECESSARY  
IF MAILED  
IN THE  
UNITED STATES

**BUSINESS REPLY MAIL**

FIRST-CLASS MAIL PERMIT NO. 348 STAMFORD CT


POSTAGE WILL BE PAID BY ADDRESSEE

ROOSTER SPRING BREAK SWEEPSTAKES  
SUITE 23000  
251 MAIN ST  
STAMFORD CT 06913-1691



Mail the  
card, left,  
to enter to  
**WIN** a  
Spring Break  
Vacation!

PLU 3 **99¢** OR **2 FOR ONLY...** **\$1.89** PLUS TAX LIGHT & PLU 4



**Hardee's**  
**BACON, EGG & CHEESE BISCUIT**  
EXPIRES 11-30-98

PLEASE PRESENT COUPON BEFORE ORDERING. OFFER NOT GOOD IN COMBINATION WITH ANY OTHER OFFERS. ONE COUPON PER CUSTOMER PER VISIT. PLEASE, CUSTOMER MUST PAY ANY SALES TAX DUE. CASH VALUE 1/10¢ OF 1¢. OFFER GOOD DURING REGULAR BREAKFAST HOURS FOR A LIMITED TIME AT PARTICIPATING HARDEE'S® RESTAURANTS. ©1998 HARDEE'S FOOD SYSTEMS, INC.

PLU 1 **99¢** OR **2 FOR ONLY...** **\$1.89** PLUS TAX LIGHT & PLU 2



**Hardee's**  
**SAUSAGE & EGG BISCUIT**  
EXPIRES 11-30-98

PLEASE PRESENT COUPON BEFORE ORDERING. OFFER NOT GOOD IN COMBINATION WITH ANY OTHER OFFERS. ONE COUPON PER CUSTOMER PER VISIT. PLEASE, CUSTOMER MUST PAY ANY SALES TAX DUE. CASH VALUE 1/10¢ OF 1¢. OFFER GOOD DURING REGULAR BREAKFAST HOURS FOR A LIMITED TIME AT PARTICIPATING HARDEE'S® RESTAURANTS. ©1998 HARDEE'S FOOD SYSTEMS, INC.

**\$1.49** PLUS TAX LIGHT & PLU 6



**Hardee's**  
**FRISCO™**  
**BREAKFAST SANDWICH**  
EXPIRES 11-30-98

PLEASE PRESENT COUPON BEFORE ORDERING. OFFER NOT GOOD IN COMBINATION WITH ANY OTHER OFFERS. ONE COUPON PER CUSTOMER PER VISIT. PLEASE, CUSTOMER MUST PAY ANY SALES TAX DUE. CASH VALUE 1/10¢ OF 1¢. OFFER GOOD DURING REGULAR BREAKFAST HOURS FOR A LIMITED TIME AT PARTICIPATING HARDEE'S® RESTAURANTS. ©1998 HARDEE'S FOOD SYSTEMS, INC.

**79¢** PLUS TAX LIGHT & PLU 5



**Hardee's**  
**BISCUIT 'N' GRAVY™**  
**PLATTER**  
EXPIRES 11-30-98

PLEASE PRESENT COUPON BEFORE ORDERING. OFFER NOT GOOD IN COMBINATION WITH ANY OTHER OFFERS. ONE COUPON PER CUSTOMER PER VISIT. PLEASE, CUSTOMER MUST PAY ANY SALES TAX DUE. CASH VALUE 1/10¢ OF 1¢. OFFER GOOD DURING REGULAR BREAKFAST HOURS FOR A LIMITED TIME AT PARTICIPATING HARDEE'S® RESTAURANTS. ©1998 HARDEE'S FOOD SYSTEMS, INC.

**99¢** PLUS TAX LIGHT & PLU 14



**Hardee's**  
**DOUBLE CHEESEBURGER**  
EXPIRES 11-30-98

PLEASE PRESENT COUPON BEFORE ORDERING. OFFER NOT GOOD IN COMBINATION WITH ANY OTHER OFFERS. ONE COUPON PER CUSTOMER PER VISIT. PLEASE, CUSTOMER MUST PAY ANY SALES TAX DUE. CASH VALUE 1/10¢ OF 1¢. OFFER GOOD AFTER REGULAR BREAKFAST HOURS FOR A LIMITED TIME AT PARTICIPATING HARDEE'S® RESTAURANTS. ©1998 HARDEE'S FOOD SYSTEMS, INC.

**\$1.99** PLUS TAX LIGHT & PLU 17



**Hardee's**  
**FRISCO™**  
**BURGER**  
EXPIRES 11-30-98

PLEASE PRESENT COUPON BEFORE ORDERING. OFFER NOT GOOD IN COMBINATION WITH ANY OTHER OFFERS. ONE COUPON PER CUSTOMER PER VISIT. PLEASE, CUSTOMER MUST PAY ANY SALES TAX DUE. CASH VALUE 1/10¢ OF 1¢. OFFER GOOD AFTER REGULAR BREAKFAST HOURS FOR A LIMITED TIME AT PARTICIPATING HARDEE'S® RESTAURANTS. ©1998 HARDEE'S FOOD SYSTEMS, INC.

**99¢** PLUS TAX LIGHT & PLU 19



**Hardee's**  
**6 PCS. CHICKEN STARS**  
EXPIRES 11-30-98

PLEASE PRESENT COUPON BEFORE ORDERING. OFFER NOT GOOD IN COMBINATION WITH ANY OTHER OFFERS. ONE COUPON PER CUSTOMER PER VISIT. PLEASE, CUSTOMER MUST PAY ANY SALES TAX DUE. CASH VALUE 1/10¢ OF 1¢. OFFER GOOD AFTER REGULAR BREAKFAST HOURS FOR A LIMITED TIME AT PARTICIPATING HARDEE'S® RESTAURANTS. ©1998 HARDEE'S FOOD SYSTEMS, INC.

**99¢** PLUS TAX LIGHT & PLU 13



**Hardee's**  
**REGULAR ROAST BEEF SANDWICH**  
EXPIRES 11-30-98

PLEASE PRESENT COUPON BEFORE ORDERING. OFFER NOT GOOD IN COMBINATION WITH ANY OTHER OFFERS. ONE COUPON PER CUSTOMER PER VISIT. PLEASE, CUSTOMER MUST PAY ANY SALES TAX DUE. CASH VALUE 1/10¢ OF 1¢. OFFER GOOD AFTER REGULAR BREAKFAST HOURS FOR A LIMITED TIME AT PARTICIPATING HARDEE'S® RESTAURANTS. ©1998 HARDEE'S FOOD SYSTEMS, INC.

**\$2.99** PLUS TAX LIGHT & PLU 24



**Hardee's**  
**2 PCS. CHICKEN, 1 BISCUIT, 2 SMALL SIDES & 1 REGULAR DRINK**  
\*EXCLUDES 100-TORNO PRICES  
EXPIRES 11-30-98

PLEASE PRESENT COUPON BEFORE ORDERING. OFFER NOT GOOD IN COMBINATION WITH ANY OTHER OFFERS. ONE COUPON PER CUSTOMER PER VISIT. PLEASE, CUSTOMER MUST PAY ANY SALES TAX DUE. CASH VALUE 1/10¢ OF 1¢. OFFER GOOD AFTER REGULAR BREAKFAST HOURS FOR A LIMITED TIME AT PARTICIPATING HARDEE'S® RESTAURANTS. ©1998 HARDEE'S FOOD SYSTEMS, INC.

**\$1.99** PLUS TAX LIGHT & PLU 18



**Hardee's**  
**CHICKEN STARS COOL COMBO FOR KIDS™**  
(INCLUDES 4 PCS. CHICKEN STARS, BIRTH PHEN, 800S DRINK & TOTY)  
EXPIRES 11-30-98

PLEASE PRESENT COUPON BEFORE ORDERING. OFFER NOT GOOD IN COMBINATION WITH ANY OTHER OFFERS. ONE COUPON PER CUSTOMER PER VISIT. PLEASE, CUSTOMER MUST PAY ANY SALES TAX DUE. CASH VALUE 1/10¢ OF 1¢. OFFER GOOD AFTER REGULAR BREAKFAST HOURS FOR A LIMITED TIME AT PARTICIPATING HARDEE'S® RESTAURANTS. ©1998 HARDEE'S FOOD SYSTEMS, INC.



Purchase 8 pieces or more of Hardee's® Fresh Fried Chicken and receive a certificate for a FREE 10x13 portrait with complimentary sitting fee (\$47.95 Value). During one visit, multiple receipts do not qualify. Certain restrictions apply. See photographer for details. Customer must pay any sales tax due. Cash value 1/20 of 1¢. JCPenney Portrait Expires 3-31-99 ©1998 HARDEE'S FOOD SYSTEMS, INC. AVAILABLE AFTER REGULAR BREAKFAST HOURS AT PARTICIPATING HARDEE'S® RESTAURANTS FOR A LIMITED TIME WHILE SUPPLIES LAST.

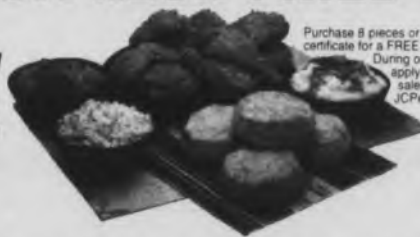


**Hardee's**  
**GO ALL OUT**



# FREE JCPENNEY 10x13 PORTRAIT WITH THE PURCHASE OF 8 PIECES OR MORE OF HARDEE'S FRESH FRIED CHICKEN.

## Hardee's GO ALL OUT



Purchase 8 pieces or more of Hardee's® Fresh Fried Chicken and receive a certificate for a FREE 10x13 portrait with complimentary sitting fee (\$47.95 Value). During one visit, multiple receipts do not qualify. Certain restrictions apply. See photographer for details. Customer must pay any sales tax due. Cash value 1/20 of 1¢. JCPenney Portrait Certificate Expires 3-31-99.

Photography  
by JCPenney  
Creating Memories for a Lifetime.\*

©1998 HARDEE'S FOOD SYSTEMS, INC. AVAILABLE AFTER REGULAR BREAKFAST HOURS AT PARTICIPATING HARDEE'S® RESTAURANTS FOR A LIMITED TIME WHILE SUPPLIES LAST

**\$9.99** PLUS TAX  
LIMIT 4  
PLU  
23

**Hardee's  
BIG VALUE MEAL**  
8 PCS. CHICKEN,  
4 BISCUITS, 2 LARGE SIDES  
& 1 LARGE PEACH COBBLER  
\*INCLUDES WHITE RICE  
EXPIRES 11-30-98

**\$6.99** PLUS TAX  
LIMIT 4  
PLU  
21

**Hardee's  
8 PCS. CHICKEN  
& 4 BISCUITS**  
\*INCLUDES WHITE RICE  
EXPIRES 11-30-98

PLEASE PRESENT COUPON BEFORE ORDERING. OFFER NOT VALID IN COMBINATION WITH ANY OTHER OFFERS. ONE COUPON PER CUSTOMER PER VISIT. CUSTOMER MUST PAY ANY SALES TAX DUE. CASH VALUE 1/20 OF 1¢. OFFER VALID AFTER REGULAR BREAKFAST HOURS FOR 4 LIMITED TIME AT PARTICIPATING HARDEE'S® RESTAURANTS. ORDERED HOURS MAY VARY BY LOCATION. SOME LOCATIONS MAY ONLY ACCEPT AFTER 5:00 P.M. ©1998 HARDEE'S FOOD SYSTEMS, INC.