

5-1-1931

Milestone - 1931

Eastern Kentucky State Teachers College

Follow this and additional works at: <http://encompass.eku.edu/yearbooks>

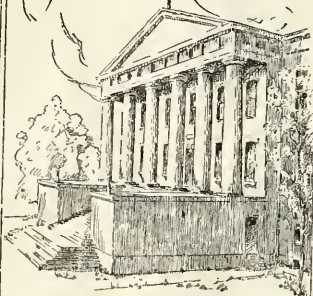
Recommended Citation

Eastern Kentucky State Teachers College, "Milestone - 1931" (1931). *Yearbooks*. Book 10.
<http://encompass.eku.edu/yearbooks/10>

This Article is brought to you for free and open access by the University Publications at Encompass. It has been accepted for inclusion in Yearbooks by an authorized administrator of Encompass. For more information, please contact Linda.Sizemore@eku.edu.



Kentuckiana
John Wilson Townsend Library



EASTERN TEACHERS COLLEGE

RICHMOND

LD1741
.E463
m50
1931

KENTUCKY

S.S.

Kentucky Room.



EX-LIBRIS

Presented to College
Library June 5, 1931.

Compliments of
"1931" Milestone Staff
"Doc Davis"
Editor



THE
MILESTONE

1931
VOLUME TEN



Published by
Senior Class
of the
Eastern Kentucky State Teachers College
RICHMOND, KENTUCKY

THE MILESTONE

Townsend
L D 1741
E 463
M 50
2-1



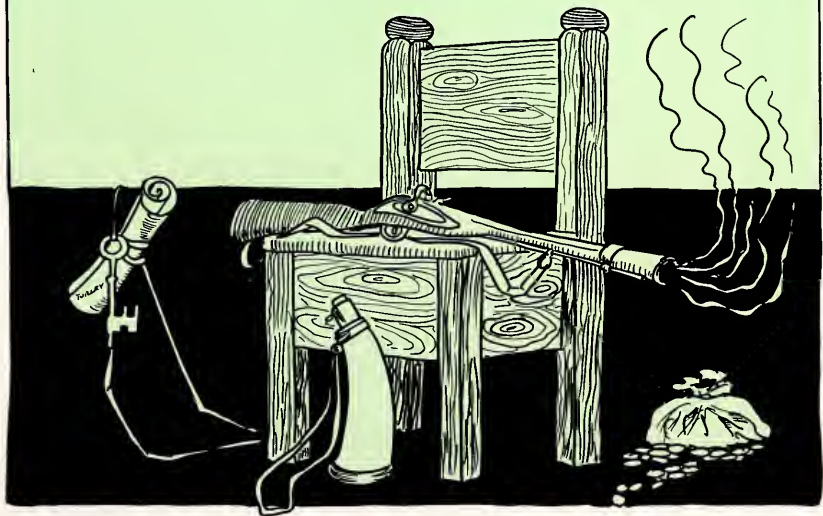
Dedicated

to


MEREDITH J. COX, B. S., M. A.

Who for many years has been a true and loyal friend of Eastern, serving her untiringly in whatsoever way he could. To his deep and lasting love for Eastern and to the high ideals he personifies as a man, do we, the class of '31, respectfully and admiringly dedicate this volume of the Milestone.

THE SCHOOL

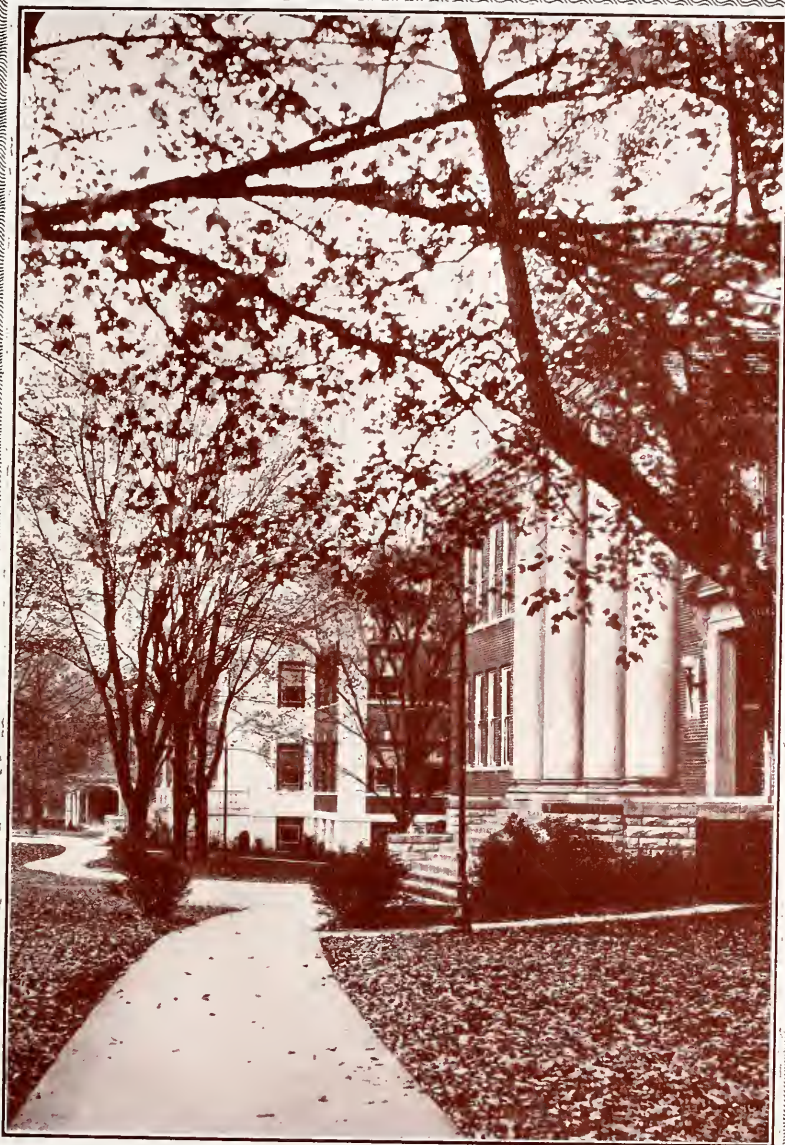


29595



Digitized by the Internet Archive
in 2011 with funding from
LYRASIS Members and Sloan Foundation

<http://www.archive.org/details/milestone1931east>



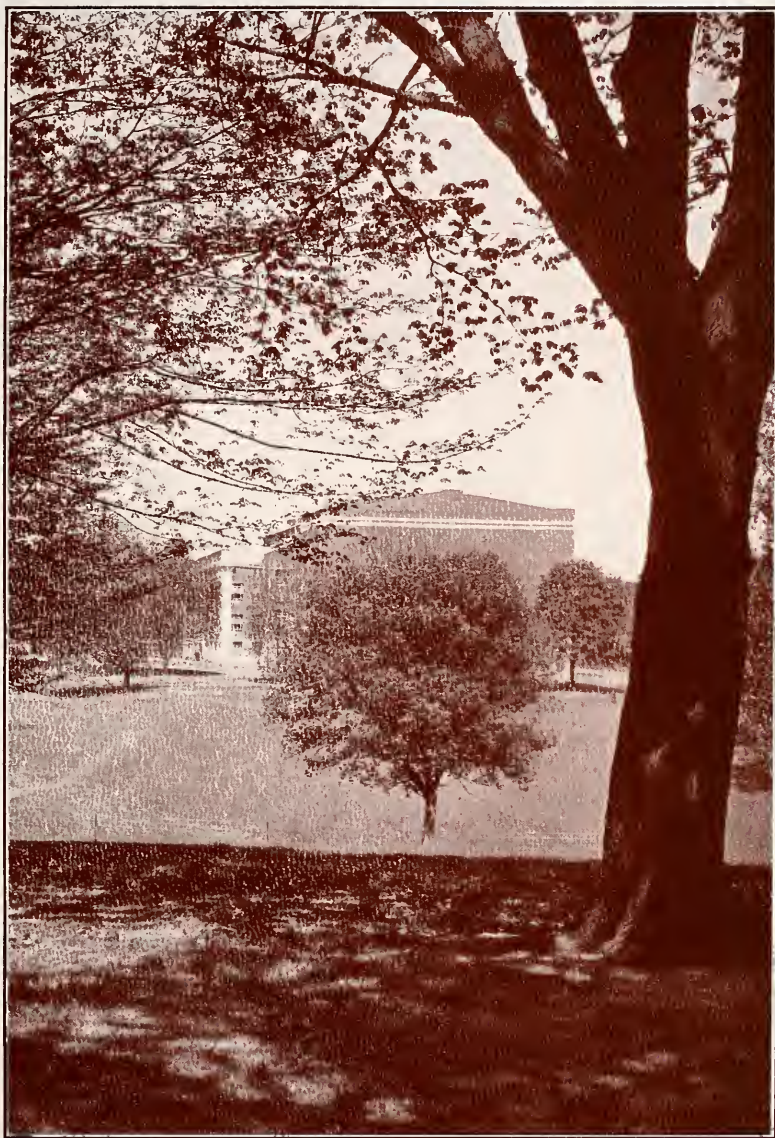
ROARK COLUMNS AND ADMINISTRATION BUILDING

Looking from the Cammack Building. Roark Hall was constructed in 1909 and used for several years as the Administration Building. The new Administration Building seen in the background was built in 1928 and named in honor of the late President Coates.



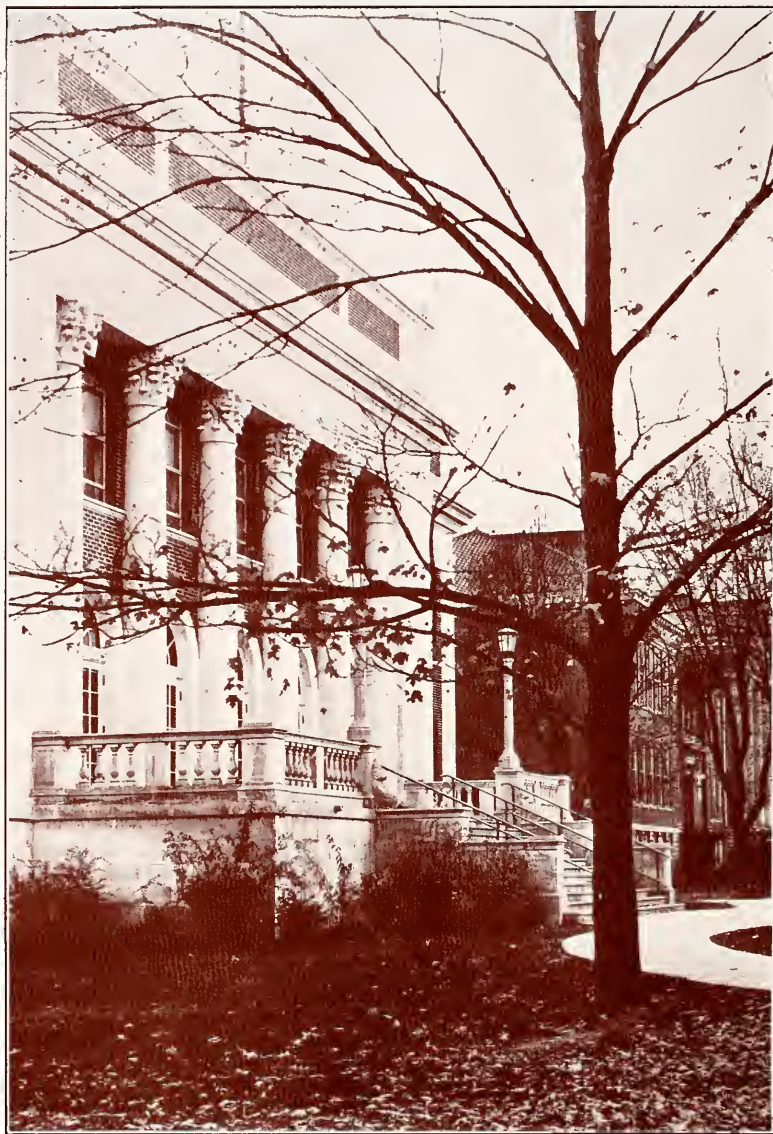
THE PRESIDENT'S HOME

And view looking toward the Coates Administration Building. This was first used as the home of the Chancellor of Old Central University.



A VIEW ACROSS THE CAMPUS

Showing the rear of the New Auditorium, giving a small view of Eastern's beautiful bluegrass campus.



ENTRANCE TO COATES ADMINISTRATION BUILDING

With Roark Hall in the background, showing that part of the campus
facing Lancaster Avenue.



BIRDS-EYE VIEW ACROSS THE CAMPUS
From Burnam Hall, Roark Hall in the distance.



THE CAMMACK BUILDING

Constructed in 1918. Named in honor of the Honorable J. W. Cammack a member of the Board of Regents and a long time friend of the college. Was designed for and houses the Training School.



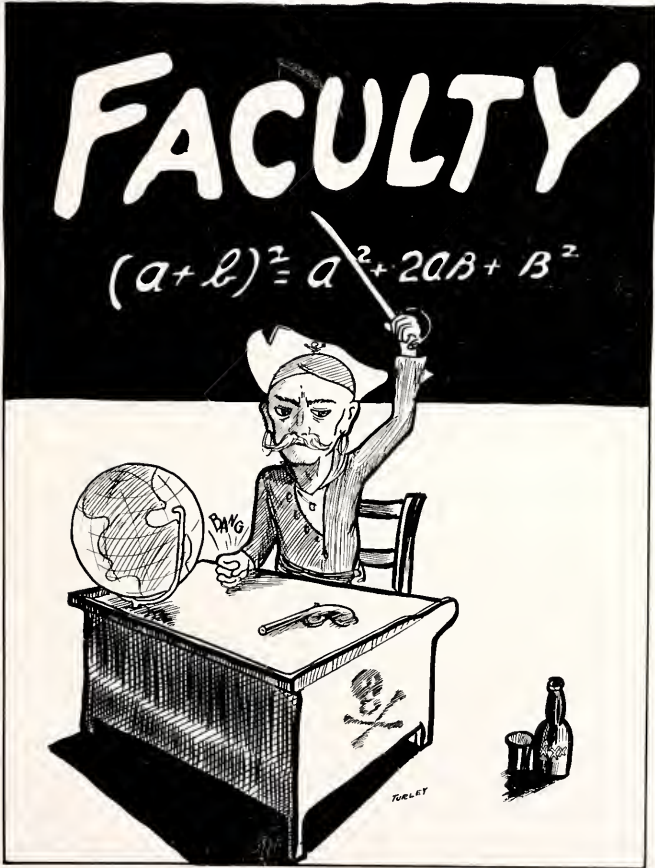
FRONT OF UNIVERSITY BUILDING

Showing the beautiful architectural trimmings on the windows and columns. This building was constructed in 1874 and is one of the oldest college buildings in the state. Was used as the Administration Building by Old Central University and is now Eastern's Model High School.



MAIN ENTRANCE TO BURNAM HALL

One of Eastern's Girls Dormitories. The College Cafeteria is located in the basement.



THE MILLSTONE



H. L. DONOVAN, A. B., M. A., Ph. D.
President



NANCY RICHARDSON, A. B.
Assistant Librarian



SAMUEL WALKER, A. B., A. M.
Principal, Senior High School



N. G. DENISTON, B. S.
Industrial Arts



LOUISE T. LOWRY, B. S., M. A.
Mathematics



MARIE L. ROBERTS
Dean of Women



THOMAS C. HERNDON, B. S., A. M.,
Ph. D.
Chemistry



THOMAS E. McDONOUGH, B. S.,
A. M.
Physical Education



MEREDITH J. COX, B. S., A. M.
Chemistry

The MILESTONE

HOMER E. COOPER, A. B., A. M.,
Ph. D.
Dean of the Faculty



GERTRUDE M. HOOD, A. B., A. M.
Physical Education



WILLIAM J. MOORE, A. B., A. M.
Economics



ASHBY B. CARTER, B. S.
Agriculture and Sanitary Science



ELIZA HANSON, A. B., M. A.
Critic, Sixth Grade



HARRIETTE V. KRICK, A. B., Ph. D.
Biology



JACOB D. FARRIS, A. M., M. D.
College Physician and Teacher of Health



DEAN W. RUMBOLD, B. S., Ph. D.
Biology



SYDNEY L. GRIFFITH
Band





WILLIAM L. KEENE, B. S., M. A.
English



EVELYN SLATER, B. S.
Home Economics



L. G. KENNAMER, A. B., B. S., A. M.,
Ph. D.
Geography and Geology



MRS. EMMA Y. CASE, A. B.
Education



ELLEN PUGH, A. B., A. M.
Critic, Fourth Grade



KERNEY ADAMS, A. B., A. M.
Director of Extension



VIRGIL BURNS, A. B., A. M.
Critic, Social Science



MABEL H. POLLITT, A. B., A. M.
Latin



J. T. DORRIS, A. B., A. M., Ph. D.
History and Government

THE MILESTONE

JAMES H. BYWATERS, B. S.
Agriculture



ANNA D. GILL, A. B.
Critic, Commercial Education



SMITH PARK, B. S., M. S., Ph. D.
Mathematics



NANCY GREER, B. S., M. A.
English



MRS. MAURINE B. TODD, Mus. B.
Voice



G. O. BRYANT, A. B., A. M.
Critic, Mathematics



NOEL B. CUFF, B. S., A. M., Ph. D.
Psychology



MRS. W. L. KEENE, A. B., M. A.
English



JAMES E. VAN PEURSEM, A. B.,
Mus. B.
Music



The MILESTONE



CHAS. A. KEITH, B. A., M. A., Ped. D.
History, Dean of Men



ISABEL BENNETT, A. B.
Assistant Librarian



EDNA ZELHOFER, A. B., A. M.
English



KATIE CARPENTER, A. B., A. M.
Principal, Rural Practice School



GEORGE N. HEMBREE, B. C. S., A. B.
Physical Education



GERMANIA J. WINGO, B. S.
Critic, Fourth Grade



JANE CAMPBELL, A. B., A. M.
Music



CHARLES T. HUGHES, A. B.
Coach and Physical Education



MARGARET LINGENFELSER, A. B.,
A. M.
Critic, First Grade

FRED A. ENGLE, A. B., A. M.
Education



CLARA DAVIES, B. S.
Assistant Librarian



MARY FRANCES McKINNEY, B. S.,
M. A.
Geography



MAUDE GIBSON
Art



RICHARD A. EDWARDS, A. B., M. A.
Director of Training School



ELIZA HUGHES, A. B., A. M.
Physical Education



PEARL L. BUCHANAN, A. B., M. A.
English



WILLIAM C. JONES, B. S., A. M.
Mathematics



C. E. CALDWELL, A. B., B. S., A. M.
Mathematics



The MILESTONE



P. M. GRISE, A. B., M. A.
Critic, Senior High School



MRS. JANET MURBACH, A. B., M. A.
French



ELIZABETH WILSON, B. S., M. A.
Critic, Third Grade



ROY B. CLARK, A. B., A. M., Ph. D.
English



EDITH G. FORD, B. C. S., A. B., A. M.
Commercial Education



ANNA A. COX, B. S., M. A.
Critic, Fifth Grade



ANNA A. SCHNIEB, A. B., A. M.,
Ph. D.
Education



ARNIM D. HUMMELL, B. S., M. S.,
Ph. D.
Physics



MARY FLOYD, A. B., A. M.
History, Acting Librarian

D. THOMAS FERRELL, A. B., A. M.
Education



RUTH DIX, B. S., A. M.
Home Economics



MRS. GLADYS PERRY TYNG, B. S.
Education



MELVIN E. MATTOX, B. S., A. M.
Education



MRS. STANTON B. HUME
Industrial Arts



MARY L. ADAMS, B. S., A. M.
Critic, Home Economics



HELEN HULL, Mus. B.
Violin

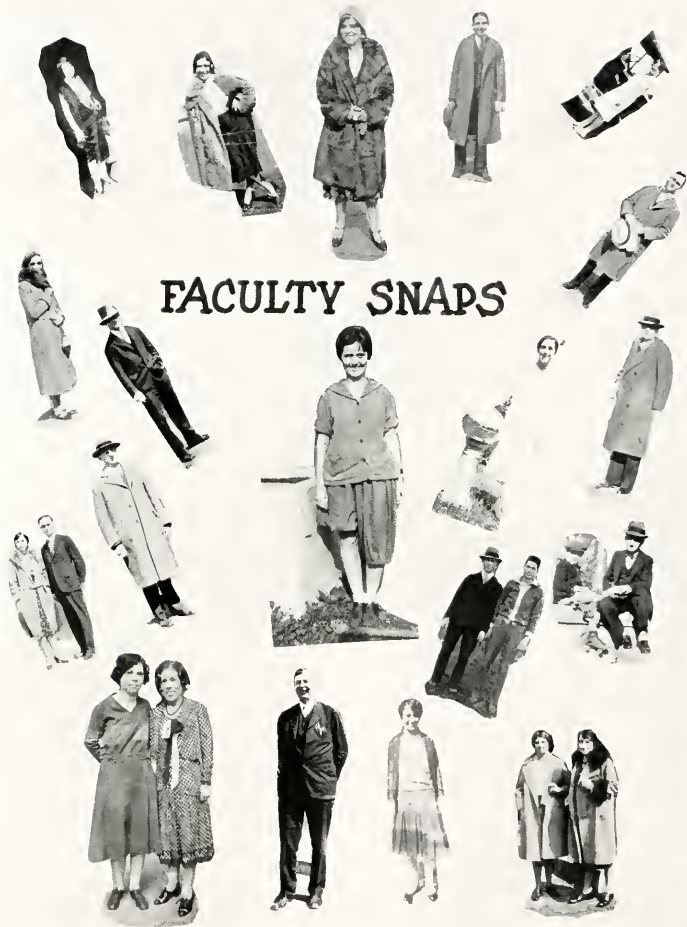


ALFRED E. PORTWOOD, A. B.
Assistant Coach and Physical Education



R. R. RICHARDS, A. B.
Commercial Education





The MILESTONE



MAYME COOPER
Secretary to Director
of Extension



HELEN PERRY
Secy. to Business Agent



KATHERINE MORGAN
Secretary to President



MAYE M. WALTZ
Secretary to Dean



LOIS COLLEY
Stenographer
Extension Dept.



G.M. BOCK
BUSINESS AGENT

ADMINISTRATIVE FORCE



EARL W. MCCONNELL
BOOK-KEEPER



FREL PALLOU
Book, File Clerk



INEZ MCKINLEY
Asst. Bookkeeper



AUGUSTA DAUGHERTY
Cashier



HOLLIS MATHERLY
Caterina Asst.



FRANKIE DEROSE
Stenographer
Business Office



LUCILLE DERRICK
Secretary to
Principal of High School



ELIZABETH DUNIGAN
Secretary to Registrar



MRS. BESSIE GRIGGS
Information
Clerk



MARJORIE COATES
Asst. and
Registrar's Office



RUBY SEARS
Stenographer
Registrar's Office



EDYTH M'ILVAINE
Caterina Supervisor



EDNA WHITE
Registered Nurse



MARY SULLIVAN
House Mother of
Sullivan Hall



W.A. AULT
Supt. Power Plant
Buildings Grounds

THE MILESTONE



1898-1931

The picture at the top is a view of Eastern's campus as it looked in 1898 when it was the home of Central University. In 1901 the Presbyterian institution was removed to Danville, Kentucky, and united with Centre College. Below is a view of Eastern in 1931.

The difference between these two pictures really lies in the story of the years between—the story of educational pioneers who were as bold as the pirates of old; whose treasure chests contained the gold of knowledge. No pirate's adventures could have been more full of hazards, more in need of vision, courage and daring, more fraught with that which could lure the dreamer than the adventures of each leader who cast his lot with the fortunes of Eastern.

On March 21, 1906, Governor Beckham signed the bill that created two State Normal Schools in Kentucky. In April a commission was appointed to locate these schools. After visiting available sites, the commissioners met in Louisville on May 1, 1906 and named Richmond and Bowling Green as the homes of the two schools. The Board of Regents, appointed on May 9th, elected Dr. Ruric Nevel Roark to be the first President of the Eastern school.

After Dr. Roark's death in 1909 Mrs. Roark served as acting president for a year, and in 1910 Dr. John Grant Crabbe was elected. He served until 1916 when he resigned to become President of Teachers College, Greeley, Colorado. On September 5, 1916 the Board of Regents elected T. J. Coates, then State Supervisor of Rural Schools, to the presidency of the institution. After the death of President Coates, March 17, 1928, Dr. Homer E. Cooper served as acting president until June 1st of that year. Since that time Dr. H. L. Donovan, one time dean of the faculty of Eastern and at that time, Professor of Education in Peabody College, has been President of Eastern.

Thus, these leaders served in their turn in the growth of the school. Thus, passed the first quarter of a century in its history. Changes other than these shown in the picture have followed fast—professional changes, size and morale of the student body, equipment, ideals, hopes and ambitions for the future that measure up to the best in American Education. A Teachers College fully accredited with membership in the Association of Kentucky Colleges and Universities, the Association of Secondary Schools and Colleges of the Southern States, and the American Association of Teachers Colleges; a Teachers College that is not content with its present; a teachers College with a future as well as a past.



SENIORS



Our Senior Class

“Shall Eastern prevail?
We say that she shall.
And our part we'll do
To push her on through
To glorious heights
Through shadow and lights.”

The history of our class through the Junior year was recorded in previous volumes of the Milestone. At the end of that Junior year they took the pledge quoted above, and they now record here the things that the class of '31 have accomplished in attempting to fulfill that pledge.

This class claimed the largest enrollment of any graduating class of Eastern Teachers College. They claimed the partial accomplishment of one of Eastern's ideals, that the majority of their class were in continual residence at Eastern since their Freshmen year. As evidence of their part “To push her on through to glorious heights”, various members of the class have assumed leadership in many campus activities. Members of the Class of '31 have served, this year, as presidents of the following organizations: Y. W. C. A., Y. M. C. A., Home Ec. Club, Sigma Tau Pi, and Sigma Lambda. The Editor of Eastern Progress, and Captain of the Football Team, were supplied by this Class of '31.

Toward the ideal of establishing customs that would become TRADITIONS at their Alma Mater, they have instituted this year a Senior Class Day, with a chapel program, luncheon, and an afternoon of entertainment. They selected a Senior Regalia and a standard invitation, and presented a Policy Book for the future classes of Eastern.

They have gone forward into various fields, holding high the standards of Eastern, always keeping in mind the helpful association of the faculty, and the camaraderie of a great student body.



PRESIDENT
**SENIOR
OFFICERS**



SPONSOR

TREASURER



SECRETARY



VICE PRESIDENT



CLAUDE C. WALDROP, B. S.
Owenton, Kentucky
"Rabbit"

Major—Chemistry
Baseball '27, '28, '30.
Football '25, '26, '29, '30.
Manager, Basketball '29.
Vice President, Senior Class '31.
Athletic Editor, '31 "Milestone."



THELMA CLAY, B. S.

Ewing, Kentucky
"Clay"

Major—Biology

Secretary, Sigma Tau Pi.

Secretary, Sigma Psi Sigma.

Secretary, "E" Club.

Tennis Champion '29.





ADA HOOD, A. B.
Ashland, Kentucky
"Addie"

Major—English
Secretary, Y. W. C. A.
Canterbury Club.
Progress Staff.
Milestone Staff.





ROSWELL W. HARRISON, A. B.
Simpsonville, Kentucky
"Ros"

Major—Social Science
Canterbury Club.
Tennis '29.
Milestone Staff.
"E" Club.





CHARLES FLOYD GAINES, A. B.

Owenton, Kentucky

"Big Boy"

Major—Social Science

Football.

Baseball.

Y. M. C. A.

"E" Club.

President, Senior Class '31.



MILDRED REA OWENS, A. B.
Maysville, Kentucky
"Med"
Major—English

Sigma Lambda.
Canterbury Club.
Orchestra.





GERTRUDE MICHAEL, A. B.

London, Kentucky

"Tu-Tude"

Major—English

Y. W. C. A. Treasurer.
Canterbury Club.



CHARLES H. RICHARDSON, A. B.
Science Hill, Kentucky
"Rich"
Major—Commerce

Football.
Basketball.
Sigma Tau Pi.
Y. M. C. A.





KENNETH T. MARSHALL, B. S.

Corinth, Kentucky

"Kenny"

Major—Mathematics

Art Editor, Milestone '30.

Associate Editor, Eastern Progress '30.

Editor, Eastern Progress '31.

Sigma Tau Pi.

Y. M. C. A.



NELL PELPHREY, B. S.

Lancaster, Kentucky

"Nellie"

Major—Home Economics

Y. W. C. A. Cabinet.

President, Home Ec Club '28.

Progress Staff.

Milestone Staff.

Secretary, Senior Class '31.





MAUDE STEPHENS, A. B.
Walnut Grove, Kentucky
"M 'LuP"
Major—Commerce
Y. W. C. A.



RAWDY WHITTAKER, A. B.

Crawford, Kentucky

"Whit"

Major—Commerce

Sigma Tau Pi.

Y. M. C. A.

Upper Cumberland Club.

B. S. U.





HALDON DURR, A. B.

Harrodsburg, Kentucky

"Sad Eyes"

Major—Commerce

Y. M. C. A.

College Cafeteria Cashier.

President, Sigma Tau Pi '31.

L. T. C.

College Band.

Orchestra.





JENNIE KELLY, A. B.

Lebanon, Kentucky

"Jane Liza"

Major—Foreign Language

Y. W. C. A.

Sigma Lambda.

Canterbury Club.





SARA COSBY, A. B.
Richmond, Kentucky.
"Sally"

Major—English

Sigma Lambda.
Canterbury Club.





ROBERT E. DAVIS, A. B.
Noctor, Kentucky.
"Bob"

Major—Social Science

Editor, Milestone.
Little Theatre Club.
Student and Faculty Social Committee.
Male Quartet.
Y. M. C. A.
Sigma Psi Sigma.
"E" Club.
Football '28, '30.
Basketball '28, '29.





RAYMOND S. HOWARD, A. B.
Corinth, Kentucky
"Ray"

Major—English
Y. M. C. A.
Men's Glee Club.



ELEANOR LESLIE CHAMBERS,
A. B.
Richmond, Kentucky
Major—English
Sigma Lambda.





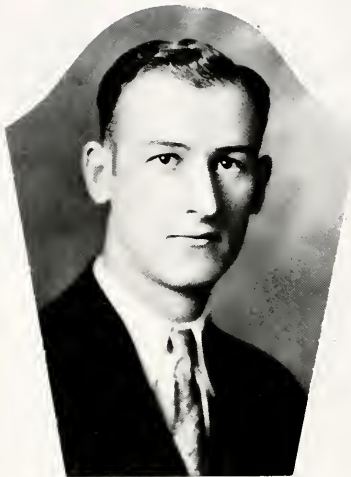
JULIA ANN PETERS, B. S.
Marydell, Kentucky
"Smith-Hughes"
Major—Home Economics
Home Ec Club.
Y. W. C. A.



ORLAND DALE LEA, B. S.
Brooksville, Kentucky
"Spoozy"
Major—Chemistry

Football.
Captain Baseball.
Basketball.
Y. M. C. A.
Caduceus Club.





RUPERT REES, B. S.

Foster, Kentucky

"Shorty"

Major—Chemistry

Y. M. C. A.



MARY COX LONG, A. B.
Richmond, Kentucky.
"Mericky"
Major—English
Canterbury Club.





CLARISSA HICKS, B. S.
Hindman, Kentucky
"Hughes"

Major—Home Economics
President, Home Ec Club.
Progress Staff.
Y. W. C. A.



ALLINGTON CRACE, B. S.

Elsie, Kentucky

"AP"

Major—Chemistry

Football Captain '30.

Basketball.

Baseball.

Y. M. C. A.

"E" Club.

Most Popular Boy '31.

Little Theatre Club.





ELMER CLAY WHITEHOUSE,
B. S.
Waddy, Kentucky
"Whitehouse"
Major—Agriculture

Glee Club.
Y. M. C. A.



WILLIE MAE TAYLOR, A. B.
Richmond, Kentucky
"Billy"

Major—French
President, Sigma Lambda.
Y. W. C. A.
Pencil and Brush Club.





NOEMI WHEELER MADDOX, B. S.

La Grange, Kentucky

"Nokie"

Major—Home Economics

Y. W. C. A.

Home Ec Club.

Progress Staff.



SUE MAE CHRISMAN, A. B.
Danville, Kentucky
"Chris"
Major—Foreign Language

Sigma Lambda.
Sigma Tau Pi.
Y. W. C. A.





MABEL K. ELLIOT, A. B.

Butler, Kentucky

"Dick"

Major—Social Science

Neon Krypton '25, '26.

Y. W. C. A.

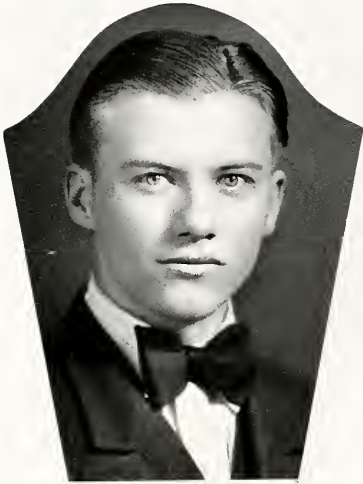
Eastern Teachers Club at Covington.



MRS. JACK ROGERS, B. S.
Columbia, Kentucky
"Jewell Box"
Major—Geography

Y. W. C. A.





WILLIAM FRANKLIN MCGIBNEY,
B. S.
Owenton, Kentucky
"Mac"
Major—Chemistry

Alpha Zeta Kappa.
Winner of Intercollegiate Oratorical Con-
test '30.
Y. M. C. A.



EUPHEMIA CABLE, B. S.

Fincastle, Kentucky

"Rope"

Major—Mathematics

Y. W. C. A.





FANNIE MAE CASTLE, B. S.
Catlettsburg, Kentucky.
"Neig"

Major—Home Economics
Y. W. C. A.
President, Home Ec Club '30.
Student and Faculty Social Committee.



OLIVE TERRILL, B. S.
Richmond, Kentucky
"Ollie"

Major—Chemistry
Canterbury Club,
Madrigal Club,
Vice President, Junior Class '30,
Little Theatre Club.





ESTHER HELEN ELLIOTT, A. B.

Builer, Kentucky

"Toodlie"

Y. W. C. A.

Eastern Teachers Club at Covington.





CHARLES E. WORK, B. S.

Augusta, Kentucky

"Work"

Major—Biology

Milestone Staff.

Caduceus Club.





ALLIEGORDON IRBY PARK, A. B.

Richmond, Kentucky

"Paragor"

Major—Foreign Language

Sigma Lambda.

Canterbury Club.

Y. W. C. A.





VIRGIL FRYMAN, B. S.
Mt. Olivet, Kentucky
"Virg"
Major—Mathematics

Football.
Baseball.
Basketball.





EDITH JAMES, B. S.
Richmond, Kentucky
"Jamie"
Major—Biology





FRENCH C. HOLBROOK, A. B.
Bays, Kentucky
"Frenchie"
Major—Social Science
President, Freshman Class '26.
Y. M. C. A.





LOUISE BROADDUS, A. B.
Richmond, Kentucky
"Noisy"
Major—French

Sigma Lambda.
Canterbury Club.





CHARLES ALPHA PETTIT, A. B.
Elliston, Kentucky
"Horse"
Major—English

Glee Club.
Y. M. C. A.
Social Committee.
Canterbury Club.
B. S. U. Council.
Women Haters Club.
Alpha Zeta Kappa.





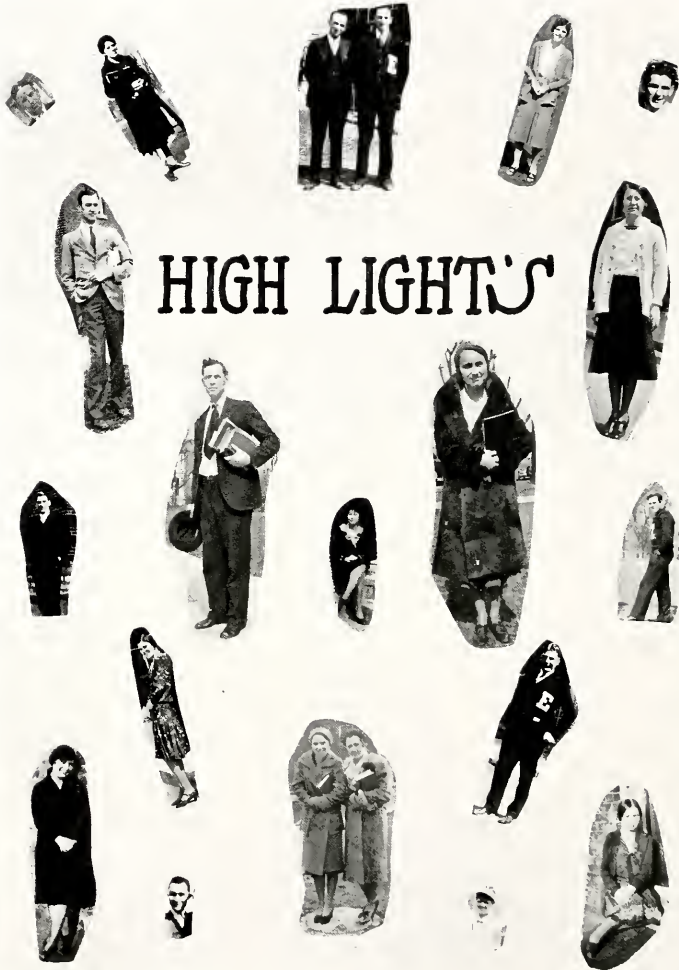
LUCILLE DERRICK, B. S.
Bellevue, Kentucky
"Cile"

Major—Mathematics
Sigma Lambda.
President, Y. W. C. A. '31.
Progress Staff.



Mrs. EFFIE NEWBY WHITE, A. B.
Richmond, Kentucky
Major—Social Science





JUNIORS





VICE PRESIDENT

JUNIOR CLASS



SPONSOR



SEC. & TRES.



PRESIDENT

The Class of '32

You must remember how you first came to college—young, untrammelled, ready to conquer the campus, and assured of success. Nine months as a Fresh took most of that out of you, and you lost your cock-sure arrogance to a steady quality that was often unexplainable, even to yourself. Your sophomore year drawing to a close, you decided to do something about it, and so you grew very collegiate, affecting colors to shame the rainbow, pouchant manners, and entirely too many cigarettes. The opposite sex took on an added importance; and, loafing was your major in which you made excellent grades. Remember? And then came summer vacation.

Before you realized it fall had come and you were back at Eastern again: a Junior. You saw friends, old Ben Adams, wearing his gold basket ball, Jimmie Ault (you heard he was married), "Mac" McKinley, who was making a name for himself on the campus, and who you later elected your class president, Bill Melton, big and brown after a hard, well-spent vacation. You saw Tommie Bennett, who had brought fame to your class the year before in the dramatic field, and big Bill Ramsey. There were the Hale brothers and they said they were determined to play bigger and better basket ball this year. You saw "Red" Burns and Loraine O'Donnell who had taken on a Miller husband during vacation. Jean Stocker and Mae Farrell, and red-headed Naimie Shelton were back. Mary Evelyn Allen, Z. T. Rice, Kenneth Canfield, Harry Cobb, Cyril Fields, Fred Palmer and dozens of others. These were only a few of the many you ran into every hour those last, warm, September days.

You settled down to studying, or more truthfully, going to classes, and every day you met new people.

It was during your first month or two as a Junior that you began to do a lot of high powered (you called it this, flippantly) thinking. Life was no longer your plastic plaything; you were here to do something, and if you were true to yourself you did that. The chapel speakers who were really earnest men and women became something to listen to, and chapel was a bit more to you than an hour to sleep and yawn through. Such words as purpose, goal, aim and ideals made an indentation on your brain.

You remember thrilling football games on days that were cool and crisp with a definite promise of the winter to come. A treat to welcome your new classmates was given and another honoring the basketball team, the members of which most all emanated from your Junior roll call.

You remember basketball games, exciting affairs and you must recall, too, that a great number of those games ended in victory for Eastern.

Your class had a guiding spirit those days for you had been extremely fortunate in having Miss Mahel Pollitt as your faculty advisor. She was a woman with ideas and ideals for each of you. There was nothing of the dictatorial in her guidance, and you noted, too, with your characteristically youthful perception, that her authority was cautiously exercised. There was something very admirable and strong about Miss Pollitt that you needed and got from her. She reminded you vaguely of something you had read one time of the ideal woman.

As spring came on slowly, subtly, it came to you that next year was your last as a college student. The mistakes, the joys, the heartaches and the pleasures of the past three years passed quickly before you, and were hurried to never again be resurrected. Tomorrow, next year, all your future lay ahead, and you turned to it with a calculated assurance that you had matured, and developed in the omni-broadening school of experience. You said goodbye to a glorious and self-revealing period of your life—you were a Junior no longer.

HERSCHEL T. MCKINLEY

Owensboro, Kentucky.

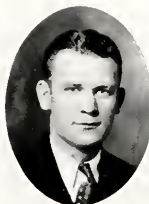
President Sophomore Class, '30; President Junior Class, '31; Vice-President L. T. C.; Secretary Canterbury Club; Business Manager of Milestone; Finance Chairman of Y. M. C. A.; Alpha Zeta Kappa.



WILLIAM E. RAMSEY

Hustonville, Kentucky.

Football; Basketball; Band; Orchestra; Y. M. C. A.; L. T. C.; Glee Club.



CORA HINKSON

Paris, Kentucky.

Y. W. C. A.; Basketball; Horace Mann Literary Society.



ZYLPHIA PETERS

Marydell, Kentucky.

Y. W. C. A.; Home Ec Club.



HARGIS HAMILTON

Terryville, Kentucky.

Y. M. C. A.; Sigma Tau Pi; Men's Glee Club.



BETTY JO BOLEYN

Bolyn, Kentucky.

Y. W. C. A.; Horace Mann Literary Society; Rural Life Club; Canterbury Club.



JAMES OSBORNE

Clarence, Kentucky.

Football; Basketball; "E" Club.



THE MILESTONE



CYRIL O. FIELDS

Cumberland, Kentucky.

Progress Staff; President, Upper Cumberland Club; Glee Club; L. T. C.; Student-Faculty Social Committee; Sigma Psi Sigma; "E" Club; Football 1929-30; Tennis.



HARRY COBB

Owenton, Kentucky.

Football; Basketball.



GLEALA WHITE

Cuzick, Kentucky.



MARGARET FISH

Mt. Vernon, Kentucky.

Madrigal Club; Y. W. C. A.; Horace Mann Literary Society.



JOHN DAVID FOUTS

Benge, Kentucky.

Basketball; Y. M. C. A.



MARY D. T. FORMAN

Mays Lick, Kentucky.

Canterbury Club; Horace Mann Literary Society; Sigma Tau Pi.



CLARENCE HARMON

Pine Knot, Kentucky.

President Commerce Club; Open Forum Committee; Horace Mann Literary Society.

HENRY HILL
Gatliff, Kentucky.
Men's Glee Club; Upper Cumberland Club;
Y. M. C. A.



C. FRED FOLMER
Independence, Kentucky.
Y. M. C. A.



THELMA HILL
Winchester, Kentucky.



MARY EVELYN ALLEN
Somerset, Kentucky.
L. T. C.; President, Madrigal Club, '31; W.
L. E. Club; Vice President Junior Class, '31.



RAY A. JONES
Pine Knot, Kentucky.



LORRAINE CHINN
Wurtland, Kentucky.
Basketball, '28-'29; Y. W. C. A.; Caduceus
Club; Sigma Psi Sigma.



WILLIAM M. WHITE
Columbia, Tenn.
Associate Editor, Eastern Progress, '31; Vice-
President, Alpha Zeta Kappa; Y. M. C. A.
Cabinet.





LESTER McHARGUE
Pine Hill, Kentucky.
Y. M. C. A.; Men's Glee Club; Secretary-
Treasurer, Junior Class.



JOHN OSBORNE
Clarence, Kentucky.
Football, '29; Basketball, '29; Y. M. C. A.;
Tennis; Pencil and Brush Club; Glee Club.



TALITHA LAWHORN
Yosemite, Kentucky



JEAN STOCKER
Richmond, Kentucky.
President, Canterbury Club, '31; Student and
Faculty Social Committee.



JOHN W. GILBERT
Oneida, Kentucky.
Baseball; Y. M. C. A.; "E" Club.



CECIL BOYERS
Boyd, Kentucky.
Sigma Lambda; Sigma Tau Pi; Y. W. C. A.



ARTHUR LLOYD
Susie, Kentucky.
Pencil and Brush Club; Horace Mann Lit-
erary Society.

MARY LOGAN LONG
Shelbyville, Kentucky.



IVA FAYE EGNER
Rockhold, Kentucky.
Madrigal Club; Upper Cumberland Club;
Orchestra.



HAROLD MITCHELL
Hazard, Kentucky.
"Coxswoy"



LUCILLE FLOYD
Danville, Kentucky.
Y. W. C. A.; Pencil and Brush Club; Madri-
gal Club.



RUBY E. WELLS
Yosemite, Kentucky.
Y. W. C. A.; Casey County Club.



SUEANNA CHEATHAM
Springfield, Kentucky
Vice President, Sigma Lambda; Assistant
Secretary, Y. W. C. A.



MRS. T. E. FAIRCCHILD
Ashland, Kentucky.
Vice President, Y. W. C. A.; Horace Mann
Literary Society.

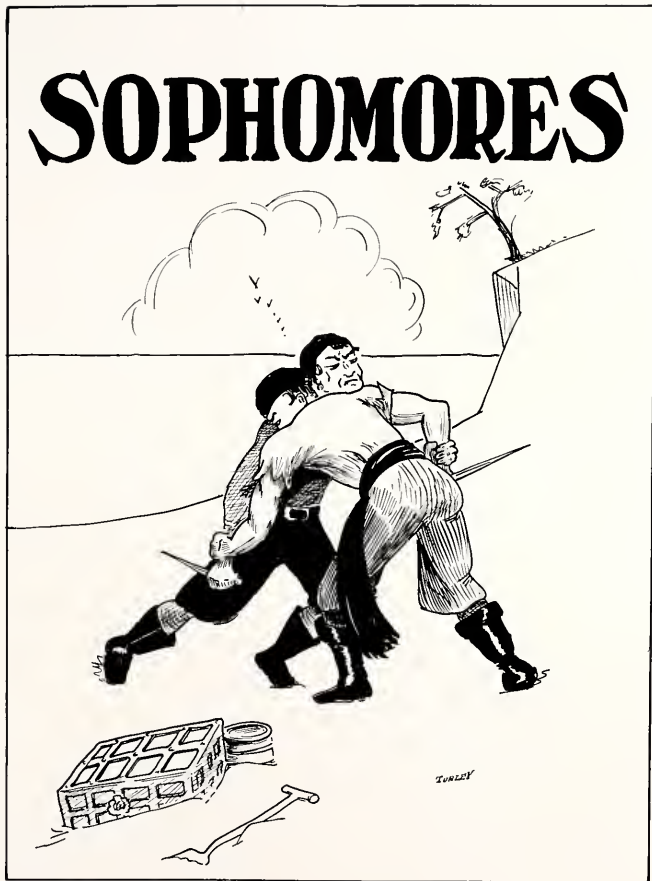




CLASS of '32



SOPHOMORES



SOPHOMORE CLASS



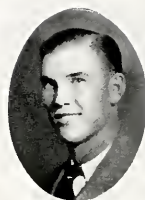
SECRETARY



VICE PRESIDENT



SPONSOR



PRESIDENT

The Class of '33

Since it is customary for classes to leave some written record of their achievements, we, the Sophomore Class of 1931, do herewith submit briefly and modestly the high lights in our illumined career at Eastern.

In the fall of 1929 we gathered here as freshmen, and, as all freshmen do, suffered good naturedly the taunts and jeers of our superiors, harboring as consolation the thought that it could not last forever.

The following year we again assembled here, but now we were Sophomores, one hundred fifty strong, a group varied in ideas, interests, ambitions, and intelligence, yet holding mutually the desire to make the Diploma Class of 1931 the most eminent for its accomplishments in the history of the institution. To lead us in this endeavor, we elected at our first class meeting Curtis Howard, President; Sam Routenberg, Vice-President; Louise Rutledge, Secretary; and Jennings Jackson, Treasurer.

It soon became evident that campus activities and the Sophomores were inseparable. Our girls easily captivated the most sought after men on the campus, and while our boys literally monopolized the fair sex, exercising the judgment of connoisseurs in selecting the fairest. Our group supplied leaders for the Alpha Zeta Kappa and the Glee Club, officials in various other organizations, and active members in every organized society on the Campus.

In athletics we did our part, furnishing several players for the football team and one man for our varsity quintet.

In entertainment we showed marked excellence in arrangement and planning, and several times sponsored much enjoyed social functions for the student body. In short, we have, under the guiding hand of our able sponsor, Miss Floyd, co-operated willingly and whole heartedly in any undertaking connected with the school. This semester climaxed for the Sophomores a year crowded with achievements, literary, social and athletic.

Throughout the year we have been envied by the freshmen, admired by the juniors, respected by the seniors and recognized by the faculty. We, in turn, have loved them all. Although we may soon separate, we will in the future retain memories of Eastern which will be as indelible as the blue in the heavens.

ELIZABETH STEWART
Richmond, Kentucky.
"Betty"



AGNES LOCKHART
Lawrenceburg, Kentucky.
"Sis"



WILENA TOLBERT
Owenton, Kentucky.
"Dutch"



H. C. MIRACLE
Barbourville, Kentucky.
"Dreamy"



ROSE FRANCIS
Ashland, Kentucky.
"Rosie"



ALICE L. MORGAN
Carrollton, Kentucky.
"Minkey"



CALVIN WALKER
Germantown, Kentucky.
"Red"



BEATRICE FUSON
Middlesboro, Kentucky.
"Bea"





LOUISE BEARD
Lebanon, Kentucky.
"Louie"



BLANCHE WIMBLE
Danville, Kentucky.
"Blanche"



DOROTHY ROSS
Richmond, Kentucky.
"Dot"



LESLIE GAY
Hazard, Kentucky.
"Sam"



MONA DANIELS
London, Kentucky.
"Ramona"



FAYE LESTER
Science Hill, Kentucky.
"Fairy"



ROSS ANDERSON
Booneville, Kentucky.
"Andy"



DAHLIA BULLOCK
Somerset, Kentucky.
"Dahl"

THE SENIORS

MARGARET McANINCH
Middleburg, Kentucky.
"Billie Mug"



HELENA H. PARK
Richmond, Kentucky.



CHRISTINE L. GANTLEY
Washington, Kentucky.
"Chris"



CURTIS HOWARD
Cumberland, Kentucky.
"Curt"



MARGIE MATHERLY
Harrodsburg, Kentucky.



NANCY LEE ELLIOTT
Middleburg, Kentucky.
"Nankey"



MERTIE ROLAND
Owenton, Kentucky.
"Mai"



HOPE HINKLE
Richardson, Kentucky.
"Hope, Faith, and Charity"



THE ALLIANCE



VIRGINIA ASBURY
Lexington, Kentucky.
"Jinny"



CLIFTON DOWELL
Russell Springs, Kentucky.
"Clif"



IVALEE PARISH
Richmond, Kentucky.



LOUISE RUTLEDGE
Richmond, Kentucky.
"Lou"



LORANA YOUNG
Lawrenceburg, Kentucky.
"Lor"



HAROLD MULLINS
Paris, Kentucky.
"Moon"



LILLIAN COX
Richmond, Kentucky.
"Lill"



LILLA BELLE ELY
Junction City, Kentucky.
"Susie"

The MILESTONE

KATHRYN KEENEY
Kenton, Kentucky.
"Katy"



MITCHEL DENHAM
Vanceburg, Kentucky.
"Mike"



WANDA VANHOOK
Livingston, Kentucky.
"Dot"



C. B. DOTSON
Coleman, Kentucky.



ANNA WILLIAMS
Mt. Sterling, Kentucky.
"Ann"



MARTHA CULTON
Corbin, Kentucky.
"Mark"



MADALINE F. ROBERTS
Richmond, Kentucky.
"Mattie"



ROBERT DIX
St. Louis, Mo.





NORA MOORE
McGee, Kentucky.



PAUL J. ELLIOTT
Middleburg, Ky.
"Bunny"



MARGARET LOCKHART
Lawrenceburg, Kentucky.
"Cherry"



LUCY ASHCRAFT
Richmond, Kentucky.
"Peggy"



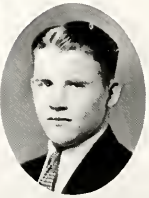
IRVIN EASTIN
Jellico, Tenn.
"Red"



MARTHA NICHOLSON
Tinker, Kentucky.
"Pocahontas"



ANNIE LAURIE FORSYTHE
Paris, Kentucky.
"Ann"



HERMAN MOORE
Cow Creek, Kentucky.

SAM ROUTENBERG
McKinney, Kentucky.



KATHERINE NATION
Waddy, Kentucky.



OPHA MAE SWAFFORD
Sibert, Kentucky.
"Mac"



HAZEL WOODRUM
Bradfordsville, Kentucky.



JOHN TARTER
Mintonville, Kentucky.
"Johnnie"



LUCY MITCHELL
Paris, Kentucky.
"Mitch"



SILAS WHITEHOUSE
Waddy, Kentucky.
"Si"



SYLVIA MAY ELLIOTT
Butler, Kentucky
"May"





CHURCHAL ROLAND
Owenton, Kentucky.
'Richard'



MABEL WILLIAMS
Ashland, Kentucky.
"May-bel"



RENA PRICIE ALLEY
Louisa, Kentucky.
"Jode"



MARTHA DINWIDDIE
Junction City, Kentucky.
"Denny"



GRACE CARLTON
Ashland, Kentucky.



ARTHUR C. EVERSOLE
Typo, Kentucky.
"Typo"



IRENE THOMAS
Lawrenceburg, Kentucky.
"Tommy"

The MILESTONE

RUTH HUGHES
McKinney, Kentucky.
"Ruthie"



HAZEL MILLER
Ashland, Kentucky.
"Alma"



EMILY F. HARRISON
Winchester, Kentucky.
"Emie"



MRS. HARRY SLOANE
Pippapass, Kentucky.
"Harry"



DORA COMBS
Crown, Kentucky.



EVADEAN SQUIRES
Whitesburg, Kentucky.
"Evie"



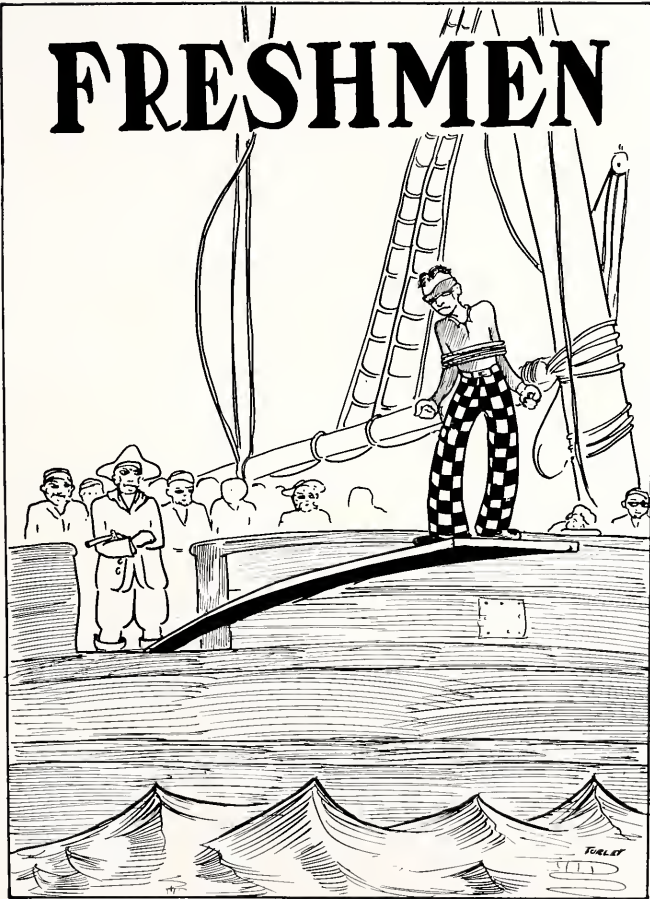
GERTRUDE CAUDILL
Mt. Vernon, Kentucky.
"Cricket"



CLASS of '33



FRESHMEN





SECRETARY

FRESHMAN CLASS



SPONSOR



TREASURER



PRESIDENT

The Class of '34

On September nineteenth, nineteen hundred thirty, four hundred and three creatures, later to be known as Freshmen, lined up and filed by the Registrar's office to begin the year with the largest attendance that any Eastern faculty or student body has ever witnessed. This beginning marked a radical change in the lives of all of these new comers for they were here for a purpose. They began at the first to strive for that goal, and by the end of the semester were well on their way.

What a disappointed lot they were when they found that the "Mystik Six" required them to wear small red caps incessantly. The same group of mysterious men imposed upon them many other strenuous tasks. When some Freshman refused to obey he was shorn of his locks immediately.

After most of this subsided, they settled down to the more serious things that go with college life. They elected an executive committee composed of a president, a vice-president, a secretary, and a treasurer. The president then chose a program committee, which has furnished the class with many hours of good, wholesome entertainment.

During all this time the freshman athletes were out on the gridiron making history for the school. Thirty-five men received numerals. After foot-ball came basketball, and the freshmen team, by sensational playing, were conceded a Kentucky championship.

Things went well until examination time came around, and tests in Physics, Chemistry, Biology, and Mathematics began to phase the mental ability of many noble freshmen. True to form, however, they come out with few failures, and many of them even stood in the lead.

When the second semester started they welcomed into their classes several old Freshmen and many new ones. This registration set another record for Freshman enrollment.

The Freshmen this year were in every organization on the campus for which they were eligible. All this is evidence that the Sophomore class of nineteen thirty-one and thirty-two will be an outstanding one.

These Freshmen were the "up and at 'em" kind. They were full of pep, vim, vigor, and school spirit. They met everything with a smile and said, "Where there's a will there's a way."

The MILESTONE

GARVICE KINCAID
Richmond, Kentucky

FANNIE EVERIDGE
Colson, Kentucky.

RUBY WATSON
Lexington, Kentucky.

MERTON WILLIAMS
Carlisle, Kentucky.

JOSEPHINE MITCHELL
Paris, Kentucky.

WILLIAM CAMMACK
Owenton, Kentucky.

HUBERT HOPPER
Russell Springs, Kentucky.

RUTH MILLER
Ashland, Kentucky.

LELAND MYERS
Harlan, Kentucky.

MABEL ROBERTSON
Shelbyville, Kentucky.

HOWARD BOLTON
Owenton, Kentucky.

NOEL L. WATSON
Science Hill, Kentucky.





FLOYD Z. HULETTE
Frankfort, Kentucky.

ELIZABETH BAXTER
Beattyville, Kentucky.

MILDRED BAUGH
Science Hill, Kentucky.

HELEN STARNES
Owenton, Kentucky.

HAZEL COOKSEY
Louisa, Kentucky.

OCIE DELL PROCTOR
LaGrange, Kentucky.

TALMADGE DEWITT
Corbin, Kentucky.

ALPHA GREENE
Booneville, Kentucky.

MRS. WILLIAM RICHARDS
Somerset, Kentucky.

LOTTIE M. YORK
Wilmore, Kentucky.

THEODORE KEITH
Richmond, Kentucky.

EDWARD C. SMITH
Campbellsville, Kentucky.

FRANCES PROCTOR
Waddy, Kentucky.

ANNA MAE MYERS
Richmond, Kentucky.

MARIETTE VIVIAN
Mt. Sterling, Kentucky.

NEWTON OAKES
Oldtown, Kentucky.

HAZEL M. MORRIS
Whitley City, Kentucky.

MARY WORTHINGTON
Paris, Kentucky.

JOE FAWKES
Richmond, Kentucky.

RUTH PERKINS
Harrodsburg, Kentucky.

PAULINE PULLIAM
Waddy, Kentucky.

VELMA McDOWELL
Mt. Olivet, Kentucky.

RUSSELL CAMPBELL
Harrodsburg, Kentucky.

HAROLD PRIM
Bellevue, Kentucky.



The MILESTONE



MATTIE TOLBERT
Owenton, Kentucky.

CORINNE KINMON
Owenton, Kentucky.

AMA HALE
Owenton, Kentucky.

EDWARD CUNDIFF
Liberty, Kentucky.

BARBARA ALEXANDER
Middlesboro, Kentucky.

MILDRED BOYER
Campbellsburg, Kentucky.

VERDA STAMPER
Benham, Kentucky.

KATHERINE SUIT
Sardis, Kentucky.

THELMA SAYLOR
Wallins Creek, Kentucky.

ALCY SKEEN
Walden, Kentucky.

LESTER K. LOCKE
Kettle Island, Kentucky.

GEORGE GREENE
Beechwood, Kentucky.

JOE DENNIS
Millersburg, Kentucky.

LELIA INABNITT
Public, Kentucky.

IRMA WICKER
Wayland, Kentucky.

MATTIE BROWN
Brock, Kentucky.

LUELLII MARI DOMIGAN
Paris, Kentucky.

CATHERINE BALLENGEE
Paris, Kentucky.

RALPH D. POWERS
Parnleysville, Kentucky.

MAUDE RICHARDSON
Mt. Victory, Kentucky.

JENAROSE PROCTOR
Owenton, Kentucky.

MAE MARGARET FISH
Crab Orchard, Kentucky.

DELMAR DALTON
Powersburg, Kentucky.

HUBERT OREL EVANS
Ashland, Kentucky.





ANNA M. LEE
Frankfort, Kentucky.

VIRGINIA B. CECH
Hardburly, Kentucky.

MARIE ROOSEVELT SAWYER
Decide, Kentucky.

CHARLES E. LINDER
Demossville, Kentucky.

FLORENCE CANNON
Swallowfield, Kentucky.

OAKLEY DOLEN
Monticello, Kentucky.

L. M. OLIVER
Berea, Kentucky.

REBA POORE
Middlesboro, Kentucky.

VIRVIAN GRAY
Monticello, Kentucky.

RUBY M. RODER
Whitley City, Kentucky.

SAM PORTER
Catlettsburg, Kentucky

SEDLEY STEWART
Stay, Kentucky.

MARY ELSTON
Turners Station, Kentucky.



HELEN KOEHLER
Mays Lick, Kentucky.



OLIVIA FIELDS
Sadieville, Kentucky.



GEORGE CARRELL
Louisville, Kentucky.

LUCY BALLARD
Crab Orchard, Kentucky.



MARY ANN CORNETT
Eversole, Kentucky.



MARGARET ALLEN
Richmond, Kentucky.

J. D. TURLEY, JR.
Harrodsburg, Kentucky.



J. NEWT LEE
Mt. Sterling, Kentucky.



CECILIA KUBAS
Lynch, Kentucky.

VIRGIL PHELPS
Van Lear, Kentucky.



ALEX TAYLOR
St. Helens, Kentucky.



NEOPHYTES



FEATURES





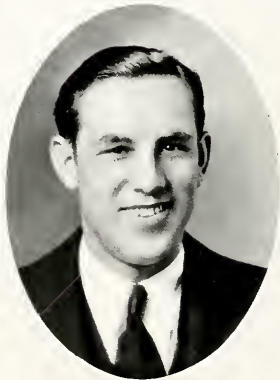
Miss Eastern



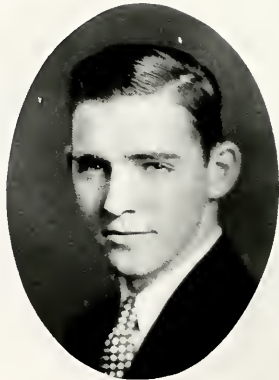
Attendants



Most Popular



Most Popular

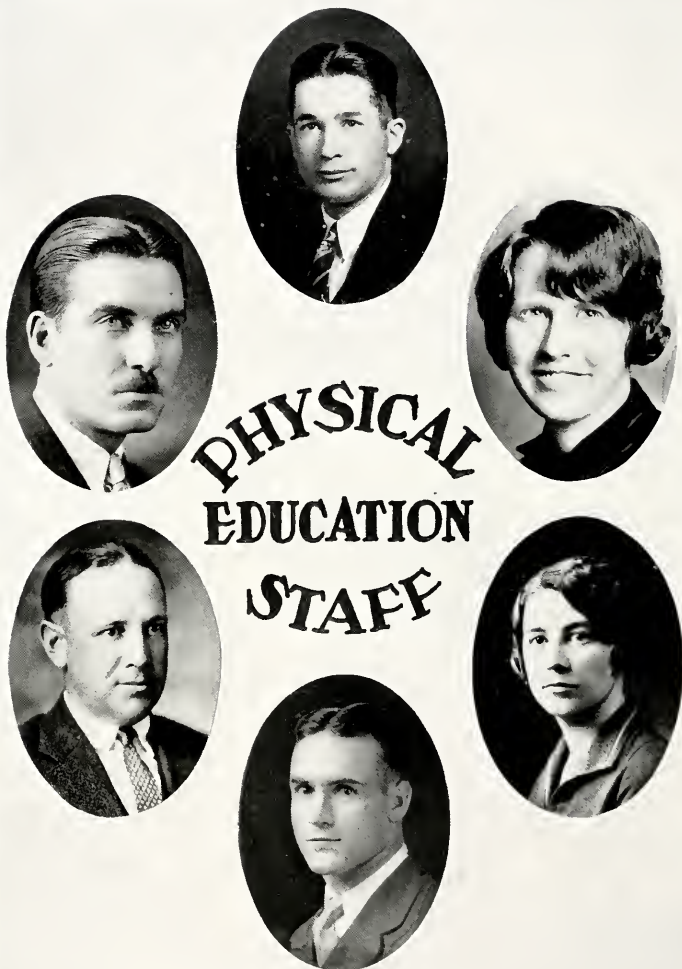


Most Handsome



ATHLETICS





Varsity Football

The fall of 1930 was Eastern's third year to play football as a member of the Southern Intercollegiate Athletic Association. The Maroons were very much handicapped because of the fact that they didn't have any new material to draw from, it having been necessary to play freshmen the year before in order to have a team.

This was the second year for "Turkey" Hughes to serve in the capacity of head coach of Eastern. Although he didn't have a winning team, he drew favorable comments from the opposing coaches and officials upon the fighting spirit of his charges.

Injuries hit the squad early in the season. Jennings Jackson, regular half back, suffered a broken shoulder in the first game and was unable to play any more during the season. Kenneth Canfield, hard hitting fullback, twisted a knee in scrimmage and although he played in a few games after this, he was never in top condition.

The Maroons were able to win only one out of the eight games scheduled. However, a quantity of good material was uncovered in the freshman squad and with plenty of hard work next fall, the Maroons should be able to make a creditable showing among the other colleges of the state.

SEASONS RESULTS

Eastern	0	Sue Bennet	6
Eastern	0	Murray	52
Eastern	0	University of Louisville	52
Eastern	0	Wesleyan	33
Eastern	13	Morehead	0
Eastern	2	Transylvania	26
Eastern	0	Union	45
Eastern	0	Western	50

THE MILESTONE



CHARLES T. "TURKEY" HUGHES
Coach



Z. T. RICE
Manager



ALLINGTON CRACE
Captain—Tackle



KENNETH CANFIELD
Full Back—Captain Elect



ORLAND LEA
Half Back



ROY COSBY
Half Back

The MILESTONE

BEN HORD
Quarter Back



CLAUDE C. WALDROP
Half Back



LESLIE GAY
Guard



ERNEST CLIFTON DOWELL
Tackle



WILLIAM MELTON
Tackle



CURTIS HOWARD
End



THE MILESTONE



DENVER QUALLS
End



JESSIE HAGAN
Quarter Back



CALVIN WALKER
Guard



WILLIAM RICHARDS
Half Back



BEN ADAMS
Tackle



FLOYD GAINES
Center

The MILESTONE

CLARENCE ELLISON
Guard



WILLIS JOHNSON
End



ROBERT GUY
Half Back



IRVIN EASTIN
Tackle



VIRGIL FRYMAN
End



ROBERT DAVIS
Center



Freshman Football

The 1929 Little Maroons, coached by "Al" Portwood, former University of Kentucky star, were the second freshman team to represent Eastern on the grid-iron. Due to the lack of material on the varsity team of 1928 the freshmen were compelled to tear up their team to lend a helping hand to complete the varsity schedule.

Almost any afternoon last fall one could see these Little Maroons dashing madly down to the Madison High School football field. These efforts were not in vain. Some might call it grit, others might say it was luck, but the extra track work must have helped to make it a successful season.

The S. I. A. A. allowed only five games. We opened with Georgetown. The boys were a little slow in getting started, but they staged a real comeback with the Kavanaugh Independent Eleven. That was a real game! The Little Maroons were able to outplay the Independents from start to finish.

Following this came our game with Maysville High School which gave us a scare. In the last quarter of the game, the Little Maroons got a break, marched down the field, kicked a goal, and it was "WHOOPEE" then.

Eastern just mentions the next game, which was with the Kentucky Kittens, but we can boast of our last game with Transylvania.

Come on everybody and let's give the Little Maroons a big hand. They will always stand out vividly in our minds. Every team has its highlights and ours were Feeback, with his long runs and Boyer with his line bucks. These lads and others like them show great possibilities for a future varsity team.



Schedule and Scores for Freshmen Football Team

Eastern	0	Georgetown	19
Eastern	7	Kavanaugh Independents	0
Eastern	7	Maysville	6
Eastern	0	Kentucky Kittens	32
Eastern	60	Transylvania	0

Varsity Basketball

The Maroon basketball team had a very successful season. In the twelve games played they were able to bring home nine victories. The percentage average for the season being .750.

Western and Wesleyan were the only teams that were able to win from the Meandering Maroon's during the regular playing season. Western's crack basketball team, composed of Lawrence, Kauffman, and Company were able to register two wins in as many days from the Eastern cagers.

As usual Eastern drew the Pioneers of Transylvania as their first round opponents in the State Tournament held at Winchester. The Pioneers, playing inspired basketball, were able to take a two point lead in the last minute of play and hold it. Thus, Eastern was eliminated in one of the biggest upsets of the Tournament. A week later the Maroons met Berea, the Kentucky Champions, and scored a decisive victory over them in the meet at Jackson, Mississippi. In the second game of the southern invasion the Maroons met Centenary, of Shreveport, Louisiana. Centenary proved to be too much for the boys as well as everyone else in the Tournament.

Bill Melton and Herman Hale at forwards, Ben Adams at center, Zelda Hale and Lawrence Hale at the guard positions formed the first string combination. The substitutes were: Howard, Qualls, Lea, Jackson, Hord, and Dowell. Each of these men saw considerable action, and each gave a good account of himself when given a chance.



Top

CLAUDE WALDROP
Varsity Basket Ball Manager

Middle

HERMAN HALE
Varsity Captain, '31

Bottom

CHARLES "TURKEY" HUGHES
Athletic Coach



Seasons Results

Eastern	35	U of K Stars	23
Eastern	31	University of Louisville	25
Eastern	33	Berea	25
Eastern	25	Georgetown	20
Eastern	25	Western	49
Eastern	34	Western	45
Eastern	25	Wesleyan	22
Eastern	28	Berea	24
Eastern	20	Wesleyan	21
Eastern	32	Morehead	20
Eastern	28	Georgetown	27
Eastern	30	Western	22

TOURNAMENT RESULTS AT WINCHESTER

Eastern	26	Transylvania	28
---------	----	--------------	----

JACKSON, MISSISSIPPI

Eastern	41	Berea	26
Eastern	20	Centenary	29



Freshmen Basketball

Eastern has supported a freshman basketball team for only three years. The first freshman team was singularly successful, losing only two of the eighteen games played. Both of those were dropped to the Kentucky Kittens.

The Little Maroons of this year (1930-31) by virtue of the two defeats handed the Kentucky Kittens, avenged the losses of previous Little Maroon squads, established firmly their claim as the best basketball squad ever to earn Eastern numerals, and won for themselves and their Alma Mater a clear TITLE to the STATE CHAMPIONSHIP.

The invincible little team was undefeated in Kentucky, although they met the best freshman teams of the state and some of the strong high school teams, including the State High School Champions, Du Pont Manual of Louisville.

The opening game was played with Berea, and was all that Berea games always are. Since the strength and endurance of neither team were known, the fans for both teams were kept excited from start to finish. When the teams weren't playing, the Eastern and Berea hands took up the competition and hurled brassy challenges at each other.

Supporters of the Little Maroons (and perhaps the Little Maroons themselves) will longest remember the first game played with the Kentucky Kittens. In that game Coach Portwood's lads held a one-point lead for the last five minutes of play, while fans, band members, reserves, coaches and all, gave everything they could in frantic support of their frosh.

Not so exciting, but more indicative perhaps of the real strength of the teams, was the return game played with the Kittens at Lexington. There the Eastern team won by five points, a game, the outcome of which was never in doubt.

The Eastern Varsity, playing after the freshmen, lost some support during both the second Berea and first Wesleyan games, due to the fact that the fans were both too limp and too hoarse to support a second game as they had the first. The Little Maroons won both by four points.

Probably the prettiest game the frosh played was the return game with Wesleyan, played on Wesleyan's floor. That game was a real exhibition of the skill and spirit of the Little Maroons. They fought just as hard for that fortieth point, although their opponents had a score of less than half that amount, as they would have for a one-point lead.

Coach Portwood's men who bore the burden of the work in the games played were: Captain Gillis Madden and Gurney Adams of Carr Creek, Jimmie Vest of Walton, Orville "Flash" Feeback of Bourbon County, and T. C. McDaniel of Manchester. The reserves who gave loyally of their time and energy during the season were: Campbell, Phillips, Hanson, Flannery, Green, C. Adams, Harlow, and Cornett.

If Coach Portwood can continue to produce freshmen teams of the caliber of the 1930-31 squad, Eastern's place in the basketball sun of the State will be assured.



Freshmen Schedule and Results

Eastern	44	Berea	32
Eastern	43	Georgetown	21
Eastern	22	Kentucky	21
Eastern	28	Weslyan	24
Eastern	42	Berea	38
Eastern	39	Midway High	21
Eastern	40	Wesleyan	19
Eastern	18	Kentucky	13
Eastern	47	Georgetown	27
Eastern	27	Manual High	11
Eastern	62	McKinney High	10
	<hr/> 412		<hr/> 237



The
WEAKER SEX
GROW STRONG



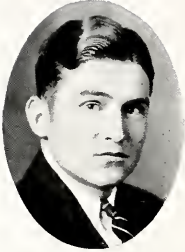
ORGANIZATIONS





Milestone Staff

R. E. DAVIS.....*Editor-in-Chief*
HERSCHEL McKINLEY..*Business Manager*
J. D. TURLEY*Art Editor*
ALLINGTON CRACE...*Advertising Mgr.*
CHARLES WORK*Associate Editor*
ROSWELL HARRISON....*Literary Editor*
ADA HOOD*Snapshop Editor*
NELL PELPHREY...*Advertising Manager*
CLAUDE WALDROP.....*Sports Editor*
THELMA CLAY.....*Sports Editor*
GEORGE CARRELL
Freshman Representative
LILLIAN COX...*Sophomore Representative*
J. D. DALTON.....*Salesman*
WILENA TOLBERT*Salesman*
THELMA SAYLOR*Typist*
N. G. DENISTON.....*Faculty Advisor*



VICE PRESIDENT



PRESIDENT



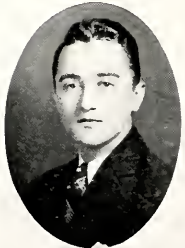
SECRETARY



SPONSOR



SPONSOR



THE SENIORS



The MILESTONE



THE EASTERN MESSAGES

Progress Staff

Editorial Staff

KENNETH T. MARSHALL *Editor-in-Chief*
WILLIAM WHITE.....*Associate Editor*
HAROLD PRIM.....*Associate Editor*
J. HAROLD HIERONYMUS *Feature Editor*
NELL PELPHREY.....*Society Editor*
ADA HOOD.....*Exchange Editor*

Business Staff

ROBERT DIX.....*Business Manager*
ALLINGTON CRACE *Advertising Manager*
MABEL WILLIAMS.. *Circulation Manager*

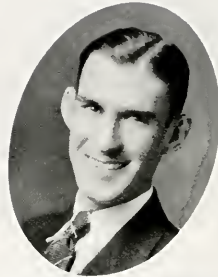
Reporters

NOEMI MADDOX HAZEL MILLER
LUCILLE DERRICK
CLARISSA HICKS
CHRISTINE GANTLEY.....*Staff Typist*
DEAN W. RUMBOLD.....*Faculty Sponsor*
J. D. TURLEY.....*Staff Cartoonist*

THE NEWCASTLE



TOMPSON BENNETT
PRESIDENT



H.T. MCKINLEY
VICE PRESIDENT



LORANA YOUNG
SECRETARY



JACK BAYER
TREASURER



HENRY LUTES
ELECTRICIAN



PEARL BUCHANAN
SPONSOR



WILLIAM RAMSEY
SERGEANT-AT-ARMS

THE MILESTONE



EVADEAN SQUIRES



ROY COSBY



RUTH BINGHAM



DELLA MARIE COATS



LOUISE RUTLEDGE



JOE BENDER



JUNE FORBES



SAM ROUTENBURG



ALLINGTON CRACE



LOREL HOUGH



J. HAROLD HIERONYMUS



MARGARET HIERONYMUS



HAZEL MILLER



R. E. DAVIS



BLANCHE WIMBLE



RUTH MILLER



MARY EVELYN ALLEN



CURT HOWARD



OLIVE TERRILL



CYRIL FIELDS



KELLY WAGERS



Y. W. C. A. Cabinet

LUCILLE DERRICK	<i>President</i>
CECIL BOYERS	<i>Vice President</i>
ADA HOOD	<i>Secretary</i>
SUEANNA CHEATHAM	<i>Junior Secretary</i>
GERTRUDE MICHAEL	<i>Treasurer</i>
ENNA NELSON	<i>Junior Treasurer</i>
NELL PELPHREY	<i>Chairman Program Committee</i>
MARTHA CULTON	<i>Junior Chairman Program Committee</i>
NELL CARD	<i>Chairman Social Committee</i>
MAUDE GROOMIES	<i>Junior Chairman Social Committee</i>
ONI RILEY	<i>Chairman Membership and Fellowship Committee, Burnham Hall</i>
HAZEL COOKSEY	<i>Junior Chairman Membership and Fellowship Committee</i>
SUE MAE CHRISMAN	<i>Chairman Membership and Fellowship Committee Sullivan Hall</i>
KATERINE SUITE	<i>Junior Chairman Membership and Fellowship Committee</i>
IDA GABBARD	<i>Chairman Music Committee</i>
LUCILLE FLOYD	<i>Junior Chairman Music Committee</i>
MABEL DORSEY	<i>Chairman Morning Watch Committee</i>
BESSIE BRAMBLE	<i>Junior Chairman Morning Watch Committee</i>
EVADEAN SQUIRES	<i>Chairman Social Welfare Committee</i>
JENNIE KELLY	<i>Chairman Advertising Committee</i>
ALICE FORD	<i>Pianist</i>
MARY FRANCES MCKINNEY	<i>Faculty Sponsor</i>

MEMBERSHIP

Ella Adams	Luellii Domigan	Katherine Keeney	Jenarose Proctor
Helen Adams	Grace Edwards	Corinne Kinmon	Ocie Dell Proctor
Rena Alley	Mrs. Fairclild	Helen Koehler	Edna Rich
Mabel Anderson	Lucille Floyd	Mrs. Myrtle Latham	Mary Roark
Lucy Ballard	Samantha Floyd	Anna Lee	Effie Roberts
Emma L. Beauchamp	Alice Ford	Mattie Lewis	Edna Rogers
Mary F. Belwood	Annie L. Forsythe	Eva Mae Littlejohn	Mrs. Jack Rogers
Jennie Best	Rose Frances	Leta Littrell	Foreman Simpson
Margaret Best	Josephine Frost	Agnes Lockhart	Mary Lou Stamper
Bettie Jo Boleyn	Ida Gabbard	Peachie Mason	Helen Starnes
Bessie Bramble	Virginia Ganaway	Margie Matherly	Sara M. Stierle
Virginia Brewer	Christine Gantley	Mildred May	Mrs. Harry Stone
Ruth Brown	Sue Gillis	Delta Mayfield	Hazel Tackett
Louetta Buser	Mrs. Elizabeth Graham	Rose Mayo	Grace Taylor
Euphermia Cable	Maude Groomes	Mary Michael	Willie Mae Taylor
Mexie Caines	Wanda Halcome	Josephine Mitchell	Irene Thomas
Grace Carlton	Ama Hale	Lucy Mitchell	Louise Thompson
Addie Carrithers	Aliene Hardin	Nora Moore	Sadie Tinsley
Virginia Cecil	Helen Harlowe	Pauline Moore	Mattie Tolbert
Lorraine Chinn	Ella Ray Hastie	Malta Muncy	Willenia Tolbert
Beulah Clubb	Ida Mae Hastie	Helen Muth	Margaret Underwood
Alma Collins	Lena Henry	Daisy Nickoson	Elizabeth Warring
Hazel Cooksey	Hope Hinkle	Allie Gordon Park	Imogene Wells
Marion Cornett	Eloise Hitt	Mina Parnley	Ruby E. Wells
Mary Ann Cornett	Sarah Jackson	Beulah Parsons	Anna Williams
Maggie Lou Coyle	Sylvia Johnson	Hollis Patterson	Mabel Williams
Goldie Craig	Kathleen Jones	Lula Pendley	Lottie York
Edith Dalzelle	Louise Jordan	Elizabeth Phelps	Lorana Young,



CYRIL FIELDS PRES. FRED ALLEN ENGLE JR. BEATRICE FUSON SEC.
Mascot—



F.A. ENGLE
FACULTY SPONSOR



H.C. MIRACLE



EDNA J. TERRELL



HENRY HILL



IVA FAYE EGNER



CHARLES LAWSON



MARTHA CULTON



VICTOR SHOEMAKER



VERDA STAMPER



LUTHER C. JONES



BARBARA ALEXANDER



DANIEL COBB



Sigma Psi Sigma

Thelma Clay
Cora Hinkson
Denver Qualls
Curt Howard
Herman Hale
Ben Adams
Virgil Fryman
Zelda Hale
Rural Dial
Russell Campbell
Tom Arnold
Harriett Turner
Miss Eliza Hughes
Miss Gertrude Hood

Sue Ransom
Alene Hendren
Margie Long
Thelma Wells
Carlisle Moody
Lillian Holcomb
Betty Middleton
William Richards
Gurney Adams
Clarence Ellison
T. E. McDonough
Christine Gantley
Joe Dennis
Merton Williams

Cyril Fields
Z. T. Rice
Leslie Gay
Marvin Jasper
"Mutt" Wyatt
Kenneth Canfield
Bob Davis
Gillis Madden
Jennings Jackson
Mr. G. N. Hembree
Coach Portwood
Coach Hughes
Lucille Fitemaster
Francis Blackwell



SECRETARY

HOME ECONOMICS CLUB



SPONSOR



PRESIDENT



VICE PRESIDENT

RUTH DIX	Faculty Sponsor
CLARESA HICKS	President
ELIZABETH STEWART	Vice President
FLORENCE HAMILTON	Treasurer

- | | | | |
|-------------------|----------------------|-------------------|------------------|
| Kathryn Keeney | Noemi Maddox | Virginia Asbury | Lillian Cox |
| Ernestine Price | Sarah Jackson | Mrs. V. C. Wilson | Martha Nicholson |
| Fannie Mae Castle | Loel Hough | Pauline Goatly | Willena Tolbert |
| Nell Pelphrey | Maryfelix Swinford | Virginia Ganaway | Ruth Scheaffer |
| Zylphia Peters | Mildred Boyer | Sarah Bingham | Lillian Lea |
| Irene Thomas | Barbara Alexander | Gladys Snyder | Mabel Kirkland |
| Hazel Evans | Cecilia Kubas | Mae Ferrell | Essie Gruelle |
| Julia Peters | Mary Frances Belwood | Ruby Jasper | Nannie Shelton |

The MILLENNIUM



MUSIC VICE PRESIDENT CHURCH RELATIONS ADVISOR

Y.M. C.A.

PRESIDENT

MEMBERSHIP FINANCE



Members of the Mens Glee Club

First Tenors

Thompson Bennett
Joe Blunchi,
Honorary Member
E. V. Carrier
Talmadge DeWitt
Raymond Howard
Robert Turpin

Second Tenors

Arthur Corn
Paul Feinstein
J. Harold Hieronymus,
Secretary and Treasurer
Sam Routenberg
President
Lillard Rogers
J. Taylor White

Baritones

C. B. Dodson
Cyril Fields
Hargis Hamilton
Warfield Miller
Waller B. Thacker
Harold Prim

Bases

Jack Bayer
Henry Hill
Lester McHargue
Clifford Rader
William Ramsey
Ray Wright



Madrigal Members

MARY EVELYN ALLEN

President

FRANCES BLACKWELL

Secretary and Treasurer

MRS. MAURINE BRONSON TODD

Director

Gertrude Caudill
Mona Daniels
Martha Dinwiddie
Iva Faye Egnier
Geneva Ferrell
Margaret L. Fish
Mae M. Fish
Lucille Floyd
Mattie Hancock

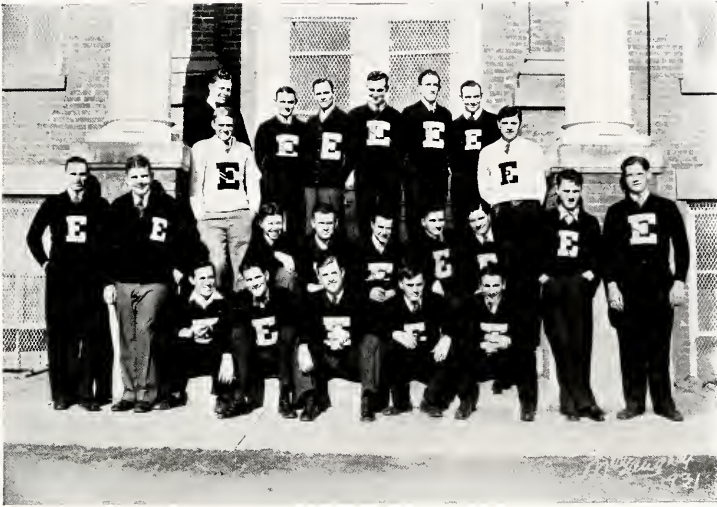
Florence Hamilton
Lena Henry
Emily Harrison
Mildred Kelly
Sarah Land
Leland Myers
Ruth Miller
Hazel Miller
Helena Parks

Elizabeth B. Paul
Bernard Rupard
Lillian Stephenson
Irene Thomas
Velma Thompson
Gladys Thompson
Elizabeth Warring
Alice West
Thelma York

THE SILESTONE







“E” Club

Left to Right

Front Row

Virgil Fryman
Floyd Gaines
Allington Grace
Bob Davis
Curt Howard
Zelda Hale
Cyril Fields
Herman Hale
Irvin Eastin

Second Row

Earl Combs
E. C. Dowell
Bill Ramsey
Kenneth Canfield
John Osbourne
James Osbourne
Ben Adams

Third Row

Calvin Walker
Claude Waldrup
Dick Richards
Leon Runyon
Orland Lea
John Gilbert



Clay County Club

OFFICERS

LARKIN CORNETT	President
RAY BOWLING	Vice President
THEO. HENSLEY	Secretary
PRESTON BAKER	Treasurer
WM. J. MOORE	Faculty Sponsor

ROLL CALL

Jarve Anderson	Kenis Chandler	Winton Hacker	Bonnie Peters
Preston Baker	Howard Clarkston	Carlo Hensley	Julia Peters
Squire Baker	Martha Cornett	Theo Hensley	Zylphia Peters
Addie Bishop	Larkin Cornett	Robert Hensley	Bob Swafford
Flossie Bishop	Beulah Honaker Cornett	Pearl Hensley	Opha Swafford
Ray Bowling	Marion Cornett	Laura J. Hornsby	Ted Sizemore
Wyatt W. Brigmon	Oliver Cornett	Stephen Keith	Levi Spurlock
Holman Britton	Manford Craft	Maud Keith	Rawdy Whittaker
Bertha Bruer	Fannie Cole	Willie Mathias	Jan Walters
Alice Burnes	Susie Davidson	Carl Maggard	Francis Walters
Ford Burns	John D. Fouts	T. C. McDaniel	Maymie Woods
Vernon Burns	Ollie M. Hacker	Rachel Murray	Leila Webb
Violet Burns	Bob Hatton	Colonel Morgan	Arthur Barnett
Robert Campbell	Thersa Hacker	Martha Nicholson	

JOKES AND ADS



The Farm and the Farm Home



Over two hundred farm tasks are now performed by electric power. And farmers, rural service executives of power companies and agricultural engineers of state colleges and universities are finding new jobs for electricity daily.

The farm business is a household enterprise at the core. The farm and the farm home are a single unit—where the kitchen range is productive capital, quite as much

as a team of horses or a hay-rake



Electric power is of even greater assistance in the farm home than in the field. Over half the current used is applied to kitchen, laundry, and household cleaning. Although the American farm is highly powered in the field, modern engineering did little for the women of the farm until the advent of electric power. For every hour of farm work performed by engines and horses, even now three hours of man and woman power are required. It is in that two-thirds of farm work that electric power can be used to substitute for human labor.



Kentucky Utilities Company

INCORPORATED

COMPLIMENTS
OF

Arnold, Hamilton &
Dykes

Wholesale Grocers

Richmond, Ky.

LOVE AND KISSES

Visiting a class of girls in high school, the superintendent was testing their knowledge of Roman numbers. He wrote on the board "LXXX", and asked:

"Now, can you tell me what that represents?"

With one voice the class answered: "Love and kisses!"

HELLO FOLKS

Best of Luck to You

Egalite-Wilson
Fruit Co.

Incorporated

208-210 West Vine Street
Lexington, Ky.

Wholesale Fruits and Vegetables
Quality the Best

A NEW DANGER

Just as a radio announcer was beginning his talk, a mother said to her young son:

"Willie, don't you go so close to that loud speaker! That announcer talks as though he had a cold."

The Photographs in the Milestone
were made by the

McGAUGHEY STUDIO

RICHMOND, KY.



Duplicates of any photograph may be had at any time.



W. T. Sistrunk & Company

WHOLESALE DISTRIBUTORS

Our Specialty---Gallon Canned Fruits and Vegetables
and all supplies used by hotels and institutions.

"Watch for Sistrunk Special." Always on Time.

<p>"Oh, pshaw! I left my watch upstairs." "Never mind, it'll run down." "No, it won't—there's a winding staircase."</p>	<p>"Is your wife home?" "Naw", replied Finkle, "she's out with a bunch of prize fighters." "Prize fighters?" exclaimed Finkle. "Yes", replied Finkle, "she went to a bridge party."</p>
---	---

Favored---Flavored to Your Taste

That's why our Ice Cream is the choice of the
discriminating.

Kentucky Ice Cream Company

RICHMOND, KENTUCKY

BRYAN-HUNT
COMPANY
INCORPORATED

Wholesale Grocers

LEXINGTON, KY.

Distributors for Sunkist Brand
California Fruits

Mary: "Gracious, how did you get all
mussed up like that?"

Jane: "I went auto riding with a crude
oil salesman."

H. B. Willoughby
DEALER IN
COAL, FEED
And Building Materials
PHONE 184
Richmond, Kentucky



*"Come to Eastern, the Friendly
College"*

COMPLIMENTS
OF
Stockton's Drug Store



KODAKS, DRUGS
and
SCHOOL SUPPLIES
Richmond, Ky.

No wonder the little duckling
Wears on his face a frown,
For it has just discovered
Its first pair of pants are down

Central
Wholesale Company
Danville, Kentucky



Distributors of
**Vegetables, Fruits and
Groceries**

*The Earth's Best Brought to
Your Dinner Table!*

POULTRY
EGGS

Robinson Poultry
Company

Richmond, Kentucky.

PHONE 132

"My son", said a father to his boy in college. "See that you study well, and I have hopes that in time you will become a famous man."

"Oh, what's the use?" said the young fellow. "There are too many monuments in this town already."

There is more news about Eastern Teachers College and its student body published in

The Richmond
Daily Register

than in any other newspaper. Read it while in Richmond, let it follow you when you leave.

*High Quality Commercial Printing
Reasonably Done.*

SAVOY FOODS

Whether Fruits, Vegetables, Fish or Condiments, the Savoy Label proclaims the highest accomplishment of Mother Nature, Ham and Brains and Skill.

Order "Savoy" from your Grocer

Steele-Wedeles
Company

Founded in 1862. Chicago, Ill.

"An old man complained of a toothache, and his wife went with him to the dentist's. The latter examined the tooth, and advised that a gold filling be placed in it.

"But, doctor," said the woman, "do you think that it is worth while putting a gold filling in the tooth, at his age."

Fraternity, College and
Class Jewelry

Commencement Announcements and Invitations

*Jeweler to Senior Class of Eastern Ky.
State Teachers College.*

L. G. BALFOUR
COMPANY

Manufacturing Jewelers and
Stationers

ATTLEBORO, MASS.



THE MILESTONE

Harcourt & Company

INCORPORATED

418 West Main Street,
Louisville, Ky.



Manufacturing

JEWELERS

Stationers - Engravers



Pleasingly Different . . .
Impressively Correct

Brilliant creative work and skillful craftsmanship are essential in making your school annual an imposing book. This can be accomplished only by placing your contract with an engraver who is a master designer and craftsman.





Dreams

DREAMS created by the imagination precede the achievement of really great accomplishment. The knowing how to weave the threads of imagination into the finished product is equally important.

It has been the custom of the GEO. G. FETTER PRINTING COMPANY to interpret the ideas of the Staff and create in material forms their dreams.

The printing in this volume is the result of organized co-operation with the Staff.

Such co-operation is one of the "Dreams" which precede the building of a successful business, and is the real working policy of the GEO. G. FETTER PRINTING COMPANY.

You, too, may be proud of your Annual.

Geo. G. Fetter Company

Louisville, Kentucky

Correspondence invited.



The MILESTONE

THIS page is dedicated by a friend to Herschel McKinley, the boy from Owensboro, who by his most earnest efforts has made this annual a financial success.



Autographs

Autographs

Autographs



THE END



