

5-1-1933

## Milestone - 1933

Eastern Kentucky State Teachers College

Follow this and additional works at: <http://encompass.eku.edu/yearbooks>

---

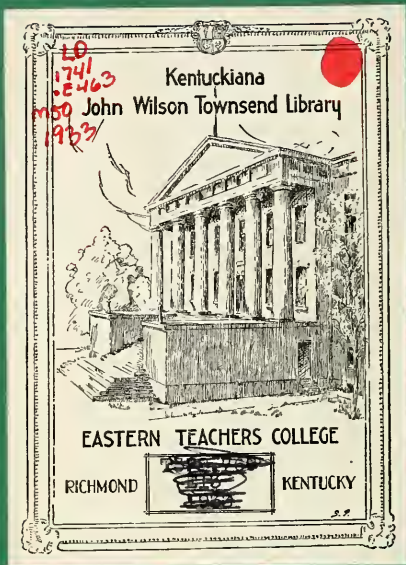
### Recommended Citation

Eastern Kentucky State Teachers College, "Milestone - 1933" (1933). *Yearbooks*. Book 12.  
<http://encompass.eku.edu/yearbooks/12>

This Article is brought to you for free and open access by the University Publications at Encompass. It has been accepted for inclusion in Yearbooks by an authorized administrator of Encompass. For more information, please contact [Linda.Sizemore@eku.edu](mailto:Linda.Sizemore@eku.edu).

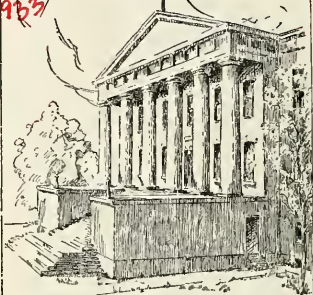
# MILESTONE

1  
.  
9  
.  
3  
.  
3



LD  
1741  
E 463  
M 50  
953

Kentuckiana  
John Wilson Townsend Library



EASTERN TEACHERS COLLEGE

RICHMOND



KENTUCKY

EX  
LIBRIS





*The*  
**MILESTONE**  
VOLUME TWELVE  
1933



A Publication  
by the  
SENIOR CLASS  
of the  
EASTERN KENTUCKY STATE TEACHERS COLLEGE  
RICHMOND, KENTUCKY

Townsend  
LD1741  
,E463  
M50  
1933

## COPYRIGHT

W. C. STEVENS  
Editor-in-Chief

ROSS C. ANDERSON  
Business Manager

BENNETT ROSE  
J. D. TURLEY, JR.  
Art Editors

N. G. DENISTON  
Faculty Adviser  
1933

## FOREWORD

When the glamour of college days fades, and life takes on a sterner aspect, then our purpose will have been achieved if this, the 1933 Milestone, brings you memories of friends; of trials and of triumphs; of life—





### Dedicated to

Charles A. Keith, B. A., M. A., Ped. D.

In appreciation of him, whose loyalty and profound love for Eastern, whose original ideas and untiring efforts have been directed toward the betterment of the college, whose worthwhile guidance along with his pleasant, profitable companionship and kindly sympathy have endeared him to the hearts of all the students, we respectfully and admiringly dedicate this, the 1933 Milestone.



# THE COLLEGE



OUR PRESIDENT'S HOME



ROARK HALL



CAMMACK BUILDING



UNIVERSITY BUILDING

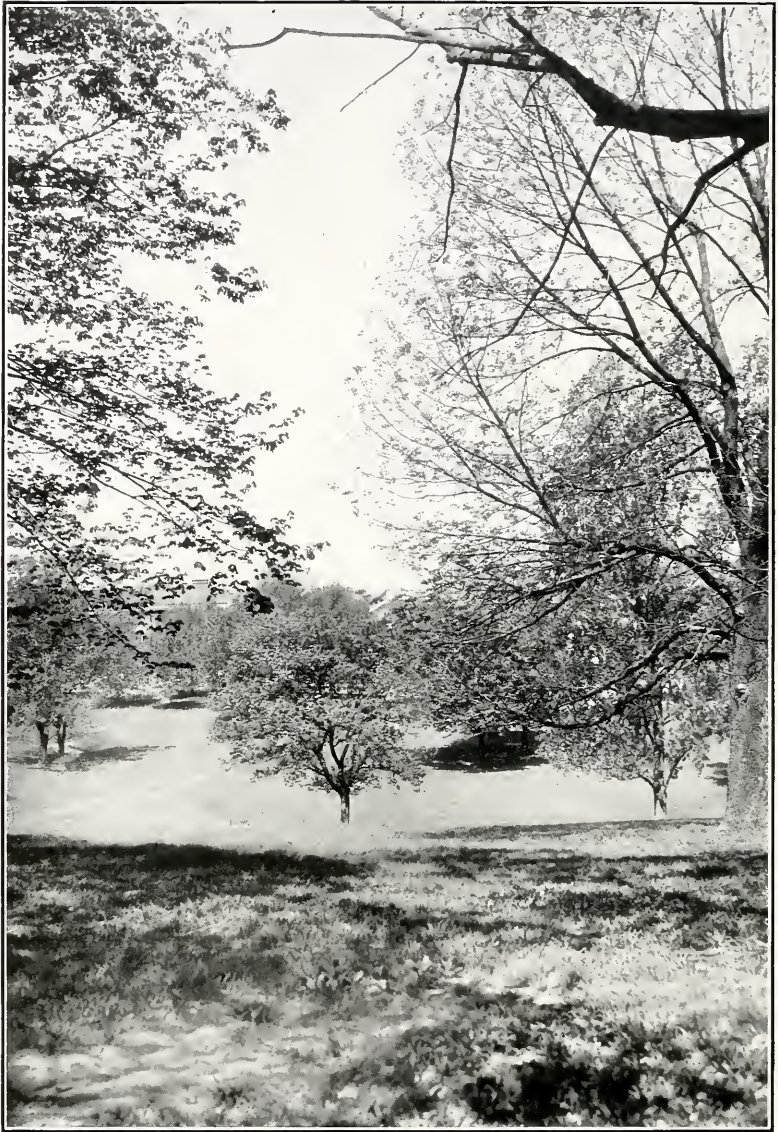


THE LILY POND



BURNAM HALL





ACROSS OUR CAMPUS



H. L. DONOVAN, A. B., A. M., Ph. D.  
PRESIDENT

CHAS. A. KEITH, B. A., M. A., Ped. D.  
DEAN OF MEN

EMMA Y. CASE, A. B., A. M.  
DEAN OF WOMEN

MELVIN E. MATTOX, B. S., M. A.  
REGISTRAR

WILLIAM C. JONES, B. S., A. M., Ph. D.  
DIRECTOR OF RESEARCH



# FACULTY

# The MILESTONE



WILLIAM L. KEENE  
B. S., M. A.  
English

VIRGIL BURNS  
A. B., M. A.  
Social Science

C. E. CALDWELL  
A. B., B. S., A. M.  
Mathematics

ELIZABETH WILSON  
B. S., M. A.  
Critic, Third Grade

MAUDE GIBSON  
Art

MAY C. HANSEN  
B. S., M. A.  
Education

GLADYS PERRY TYNG  
B. S., M. A.  
Education

GERMANIA J. WINGO  
B. S., M. A.  
Critic, Fourth Grade

C. M. GUMBERT  
B. S., A. M.  
Agriculture

RICHARD A. EDWARDS  
A. B., A. M.  
Director of Training School

MEREDITH J. COX  
B. S., M. A.  
Chemistry

CHARLES T. HUGHES  
A. B.  
Coach

HARRIETTE V. KRICK  
A. B., Ph. D.  
Biology

BROWN E. TELFORD  
B. S.  
Piano

# The MILESTONE



CORA LEE  
B. S., M. A.

Critic, Model High School

PEARL L. BUCHANAN  
A. B., M. A.

English—Speech

GERTRUDE M. HOOD  
A. B., A. M.

Physical Education

ARNIM DEAN HUMMELL

B. S., M. S., Ph. D.  
Physics

DEAN W. RUMBOLD

B. S., Ph. D.  
Biology

N. G. DENISTON

B. S.  
Industrial Arts

MRS. JANET MURBACH

A. B., A. M.  
French

ROY B. CLARK

A. B., A. M., Ph. D.  
English

MARY FRANCES MCKINNEY

B. S., M. A.  
Geography

MARY FLOYD

A. B., M. A.  
Acting Librarian and History

ALLIE M. FOWLER

B. S., M. A.

ANNA D. GILL

B. C. S., A. B.  
Commerce

THOMAS E. McDONOUGH

B. S., M. A.  
Physical Education and Health

G. O. BRYANT

A. B., A. M.  
Critic, Mathematics

# The MILESTONE



NOEL B. CUFF  
B. S., A. M., Ph. D.  
Psychology

J. DORLAND COATES  
B. S., M. A.  
Critic, Model High School

JAMES E. VAN PEURSEM  
A. B., B. Mus.  
Music

MARY KING BURRIER  
B. S., M. S.  
Home Economics

ISABEL BENNETT  
A. B., B. S.  
Assistant Librarian

HELEN HULL  
B. Mus.  
Music

RUTH DIX  
B. S., M. A.  
Home Economics

ELIZA HUGHES  
A. B., A. M.  
Physical Education

ASHBY B. CARTER  
B. S.  
Agriculture and Sanitary Science

WILLIAM J. MOORE  
A. B., A. M., Ph. D.  
Economics

L. G. KENAMER  
A. B., B. S., M. A., Ph. D.  
Geography and Geology

THOMAS C. HERNDON  
B. S., M. A., Ph. D.  
Chemistry

MARY L. ADAMS  
B. S., M. A.  
Critic, Home Economics

ANNA A. SCHNIEB  
A. B., A. M., Ph. D.  
Education

# The MILESTONE



GEORGE N. HEMBREE  
B. C. S., A. B.  
Physical Education

JACOB D. FARRIS  
A. M., M. D.  
College Physician

FRED A. ENGLE  
A. B., A. M.  
Mathematics

ELEANOR MEBANE  
A. B., M. A.  
Art

SMITH PARK  
B. S., M. S., Ph. D.  
Mathematics

KATIE CARPTENER  
A. B., A. M.  
Principal, Rural Practice School

NANCY RICHARDSON  
A. B.  
Assistant Librarian

ELIZA HANSON  
A. B., M. A.  
Critic, Sixth Grade

P. M. GRISE  
A. B., M. A.  
Critic, Model High School

SAMUEL WALKER  
A. B., A. M.  
Principal, Model High School

JANE CAMPBELL  
B. Mus., A. B., A. M.  
Music

ALFRED E. PORTWOOD  
A. B.  
Assistant Coach

EDITH G. FORD  
B. C. S., A. B., A. M.  
Commerce

MARY EDMONDS BARNHILL  
A. B., LL. B., M. A.  
English

# The MILESTONE



G.M. BROCK  
GRADUATE



ELIZABETH DUNIGAN  
GRADUATE



KATHERINE MORGAN  
GRADUATE



FRED BALLOU  
GRADUATE



R.H. MATHERLY  
GRADUATE

## ADMINISTRATIVE FORCE



W.A. AULT  
GRADUATE



LUCILE DERRICK, B.S.  
GRADUATE



MARGARET GREENLEAF, A.B.  
GRADUATE



EUNICE WINGO  
GRADUATE



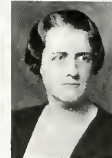
LOIS COLLEY  
GRADUATE



MARIE L. ROBERTS.  
GRADUATE



MAYME COOPER  
GRADUATE



EDITH L. McILVAINE  
GRADUATE



MAYE M. WALTZ  
GRADUATE



MRS. BESSIE GRIGGS  
GRADUATE



E.P. McCONNELL  
GRADUATE



INEZ McKINLEY  
GRADUATE



EDNA WHITE  
GRADUATE



AUGUSTA DAUGHERTY  
GRADUATE



MRS. HART PERRY  
GRADUATE

# The MILESTONE



## Board Of Regents

HON. JAMES H. RICHMOND, Ex-Officio Chairman

HON. HIRMAN M. BROCK

HON. JOHN NOLAND

HON. H. D. FITZPATRICK

HON. J. W. CAMMACK



## **IN MEMORIAM**

---



**HON. C. F. WEAVER**  
Ashland, Ky.

Member of Board of Regents  
1920-1932

**DANIEL B. LITTLE**  
Paint Lick, Ky.

**DOROTHY ROSS**  
Richmond, Ky.

**DONALD MAINHART**  
Richmond, Ky.

**MYRTLE B. HAYS**  
Onedia, Ky.

**EFFIE NEWBY WHITE**  
Richmond, Ky.

**MRS. LOUELLA ABNEY**  
Kingston, Ky.



JAMES E. CHADWELL  
PRESIDENT

ROY COSBY  
VICE-PRESIDENT

MARY EVELYN ALLEN  
TREASURER

L. G. KENNAMER  
CLASS SPONSOR

MARTHA CULTON  
SECRETARY



# SENIORS

# The MILESTONE

## Our Senior Class

Days must come and days must go. Some days are happy—others sad. But we as Seniors of Eastern are fast approaching a day which will bring both joy and sadness. The joy comes from thinking that we as individuals have reached the end of the fourth milestone in our college career, and are now ready to join a larger army and march along facing life and its many problems. But the thought of leaving our Eastern, the place we have learned to love during our four years within her doors, brings sadness to our hearts.

The Class of '33, for the most part, has remained intact during the four years spent at Eastern. The members have made themselves known by keeping the spirit of cooperation and working to hold higher the ideals that Eastern has set before them. It would be folly to enumerate the things that the Class has done to prove its worth in carrying out these standards, but it can be said of the Class of '33 that it has fought the army of problems that were confronted in the fourth mile—victory is its reward.

Various members of the Class of '33 have shown the ability of this class to carry on, by assuming leadership in many campus activities. Such organizations as the Y. M. C. A., Sigma Tau Pi, Little Theatre Club, Madrigal Club, Canterbury Club, Social Science Club, Sigma Psi Sigma, Agriculture Club, Rural Life Club, and the "E" Club have chosen their presidents from the Class of '33. The Class also supplied the captains of the Football and Basketball teams.

Our personal history as a class would only be an enumeration of many things that is common to any graduating class. We have gone through the years striving to make the best of the situations that came into our career. If we have one claim to distinction, it is that we have learned the meaning of the invaluable word, comradeship; comradeship with our well trained faculty, who have striven so hard to teach that we might learn; comradeship with our president, who has led us through our four years at Eastern; and comradeship with our fellow students, whom we have learned to love.

It is with a feeling of sadness that we bid goodbye to school days and to Eastern, but it is the sincerest wish of every Senior that he may be able to carry on, guided by the spirit of Eastern so nobly set forth in our school song—"Alma Mater."

# The MILESTONE

WALLER BAILEY THACKER, A. B.

"Waller"

LAWRENCEBURG, KENTUCKY

Major—English

Glee Club, Secretary '32

Little Theatre Club, President '32

Canterbury Club, President '33



LOUISE RUTLEDGE, A. B.

"Louise"

RICHMOND, KENTUCKY

Major—English

Little Theatre Club, Secretary '32, Treasurer '31

Canterbury Club, Vice-President '32

Sigma Lambda

Chapel Committee



SAM B. TAYLOR, A. B.

"Sam"

BEATTYVILLE, KENTUCKY

Major—Social Science

County Superintendent, Lee County

Upper Kentucky River Education Association, '32

Favorite Saying: "Make the most of today, and tomorrow will take care of itself."



# The MILESTONE



LEE CRISLER WEBB, B. S.  
"Lee"

SCIENCE HILL, KENTUCKY

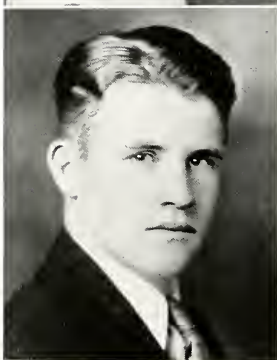
Major—Agriculture



ANNA M. MYERS, A. B.  
"Ann"

RICHMOND, KENTUCKY

Major—Commerce  
Sigma Tau Pi, Secretary  
Sigma Lambda  
Progress Staff  
Social Science Club  
Favorite Saying: "Believe you me."



HERMAN MOORE, A. B.  
"Herman"

COW CREEK, KENTUCKY

Major—Commerce  
Sigma Tau Pi, President '33, Vice-President '32  
Baseball '31, '32, '33  
Y. M. C. A.  
"E" Club  
Favorite Saying: "Blow me down."



# The MILESTONE

STELLA WHALEY, A. B.  
"Stella"

OZARK, ALABAMA

Major—Physical Education  
Graduate—Asbury College  
Physical Education Club; Biology Club  
Special Representative, Baptist Student Union



ROSS C. ANDERSON, B. S.  
"Hunk"

BOONEVILLE, KENTUCKY

Major—Commerce  
Sigma Tau Pi, Vice-President '30, President '31  
"E" Club; "Pep" Club  
Social Science Club  
Milestone, Business Manager  
Memorial Hall Council, Secretary  
Social Committee  
Student Penmanship, Instructor  
Favorite Saying: "Fan me with a brick."



BONNIE OLGA TUSSEY, A. B.  
"Tussey"

BOND, KENTUCKY

Major—Rural Education  
E. K. E. I. L., Secretary and Treasurer  
Y. W. C. A., Fellowship Chairman  
World Affairs Club  
Alpha Zeta Kappa  
Favorite Saying: "Step up."



# The MILESTONE



IDA FRANCES EDWARDS, A. B.

"Shorty"

RICHMOND, KENTUCKY

Major—Commerce

Sigma Tau Pi



ROBERT TERRILL DUNN, JR., A. B.

"Bob"

RICHMOND, KENTUCKY

Major—Mathematics

Favorite Saying: "There will be days and days like this."



MABLE FRANCES KIRKLAND, B. S.

"Kirk"

GRAVEL SWITCH, KENTUCKY

Major—Home Economics

Home Economics Club, Secretary, '31, '32

Y. W. C. A., Vice-President, '31, '32,

President, '32, '33

Elementary Council



# The MILESTONE

WILLIAM C. STEVENS, A. B.

"Bill"

RICHMOND, KENTUCKY

Major—Industrial Arts  
Milestone, Editor; Progress Staff  
Little Theatre Club; Chapel Committee  
"E" Club; Physical Education Club  
Standard Certificate Class, President  
Football; Baseball; Track  
Y. M. C. A.; Anderson County Club  
Favorite Saying: "Aint that sumpin'!"



ESTELLE COLLINS, A. B.

"Sis"

KINGSTON, KENTUCKY

Major—Mathematics  
Social Science Club  
Favorite Saying: "O-kay."



J. TAYLOR WHITE, B. S.

"J. Taylor"

RICHMOND, KENTUCKY

Major—Geography and Geology  
World Affairs Club, Secretary and Treasurer  
Glee Club, Vice-President  
Band; Social Committee  
Alpha Zeta Kappa  
Kentucky Academy of Science  
Student Chapel Program Committee  
Laboratory Instructor for Geology Department  
Favorite Saying: "I have been looking for a new fossil."





# The MILESTONE



CHARLES DANA HOWE, B. S.  
"Red"

STAMPING GROUND, KENTUCKY

Major—Agriculture  
Agriculture Club  
Biology Club  
Social Science Club  
Favorite Saying: "How do you know?"



BEULAH MAE LEWIS, A. B.  
"Buddie"

WILDIE, KENTUCKY

Major—Elementary Education  
Social Science Club  
Elementary Council, Vice-President  
Y. W. C. A.



CLARENCE C. SHEPHERD, B. S.  
"Shep"

STEARNS, KENTUCKY

Major—Mathematics  
Library Staff '32, '33  
Favorite Saying: "Persistence turns the trick."  
Sigma Tau Pi



# The MILESTONE

VIRGINIA MOODY, B. S.

"Little Bit"

KINGSTON, KENTUCKY

Major—Home Economics

Sigma Tau Pi

Home Economics Club

Social Committee; Chapel Committee

Junior Prom Queen, '32

Social Science Club

Favorite Saying: "How am I doing?"



WILLIAM JENNINGS ARVIN, A. B.

"Bill"

NOLAND, KENTUCKY

Major—Rural Education

Social Science Club



MAYO HONCHELL WARREN, A. B.

"Mayo"

RICHMOND, KENTUCKY

Major—Foreign Language

Sigma Lambda

Canterbury Club

Favorite Saying: "Oh boy!"



# The MILESTONE

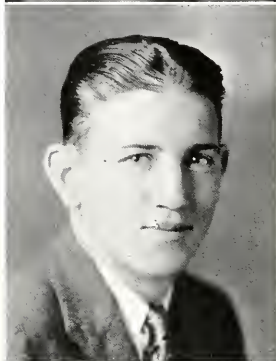


MARY EVELYN ALLEN, A. B.

"Mary"

ELIHU, KENTUCKY

Major—English  
Vice-President, Junior Class '31  
Senior Class, Treasurer '33  
Madrigal Club, President '31, '33  
Little Theatre Club  
Junior Prom Queen '31  
Social Science Club



JAMES E. CHADWELL, A. B.

"Jimmy"

CORBIN, KENTUCKY

Major—Social Science  
Senior Class, President  
Social Science Club  
Upper Cumberland Club, President  
Biology Club; Pep Club  
Football '31  
Y. M. C. A.; Sigma Tau Pi  
Student—Faculty Social Committee  
Favorite Saying: "Try and See."



LUCY MITCHELL, A. B.

"Mitch"

PARIS, KENTUCKY

Major—Elementary Education  
Dormitory Student Council, President  
Y. W. C. A.  
Social Science Club  
Sigma Psi Sigma  
Elementary Council  
Milestone Staff  
Progress Staff



# The MILESTONE

SALEM W. MOODY, A. B.  
"Salem"

KINGSTON, KENTUCKY

Major—Social Science  
Progress Staff  
World Affairs Club  
Social Science Club  
Chapel Committee  
Favorite Saying: "Cute."



RUBY MAY SMITH, A. B.  
"Pat"

RICHMOND, KENTUCKY

Major—Commerce  
Sigma Lambda  
Sigma Tau Pi



WILLIE B. HALL, A. B.  
"Bill"

STANFORD, KENTUCKY

Major—Social Science  
Social Science Club  
Rural Life Club, President, '33



# The MILESTONE



CYRIL OGLE FIELDS, B. S.

"Cy"

CUMBERLAND, KENTUCKY

Major—Physical Education  
Football '29; Tennis '30; track '31  
President, Freshman Class '30  
Upper Cumberland Club, President  
Little Theatre Club; Glee Club '30, '31, '32  
Sigma Psi Sigma  
Eastern Progress Staff '31  
Social Committee; Biology Club  
Favorite Saying: "How you wuz."



CLARA VIRGINIA CLEM, A. B.

"Slim"

RICHMOND, KENTUCKY

Major—Social Science  
Home Economics Club  
Social Science Club  
Y. W. C. A.  
World Affairs Club, Honorary Member  
Favorite Saying: "Man Oh Man."



R. HAROLD RIGBY, B. S.

"Little Fan"

BEREA, KENTUCKY

Major—Chemistry  
Band  
Orchestra



# The MILESTONE

ULA FIKE, A. B.

"Fikey"

WACO, KENTUCKY

Major—Rural Education

Y. W. C. A.

Home Economics Club

Elementary Council

Social Science Club

Rural Life Club

Associate Editor of "E" Book '33

Favorite Saying: "Well, I hope to kiss a monkey."

Sigma Tau Pi



WILFRED H. GAINES, B. S.

"Gaines"

BEREA, KENTUCKY

Major—Chemistry

Football Manager

Basketball Manager

Chapel Committee

"E" Club

Favorite Saying: "No foolin'."



LUCY FREY, A. B.

"Lucy"

BUECHEL, KENTUCKY

Major—Foreign Language

Sigma Lambda

Orchestra

Y. W. C. A.



# The MILESTONE



LUCY ASHCRAFT, A. B.

"Peggy"

RICHMOND, KENTUCKY

Major—Social Science  
Social Science Club



LESLIE C. GAY, A. B.

"Gay"

HAZARD, KENTUCKY

Major—Social Science  
Football '30; Track '31  
Rural Life Club, President  
Alpha Zeta Kappa, Vice-President  
Improvement League, President '32  
Social Science Club  
Sigma Psi Sigma  
Favorite Saying: "Why worry?"



LILLIAN PEARL COX, B. S.

"Lil"

RICHMOND, KENTUCKY

Major—Home Economics  
Baptist Student Union, Reporter, '33, President,  
'31, '32  
Home Economics Club  
Milestone Staff  
Little Theatre Club, Treasurer, '33  
Alpha Zeta Kappa  
Freshman Class, Secretary, '30



# The MILESTONE

JOSEPH HENRY BENDER, A. B.

"Joe"

BARBOURVILLE, KENTUCKY

Major—Commerce  
Sigma Tau Pi  
Little Theatre Club  
Orchestra; Band  
Tennis Team  
Social Science Club



RUTH BINGHAM, A. B.

"Bing"

RICHMOND, KENTUCKY

Major—Art  
Little Theatre Club  
Sigma Lambda, Treasurer  
Progress Staff



ELMER SIZEMORE, A. B.

"Sizey"

HYDEN, KENTUCKY

Major—English  
Eastern Kentucky Education Improvement League,  
President  
Alpha Zeta Kappa  
Canterbury Club





# The MILESTONE



BEN F. WILSON, B. S.

"Ben"

GUSTON, KENTUCKY

Major—Commerce

Orchestra

Y. M. C. A., Vice-President '32, '33

Sigma Tau Pi

Favorite Saying: "By golly!"



ETHEL WILLENA TOLBERT, B. S.

"Dutch"

OWENTON, KENTUCKY

Major—Home Economics

Home Economics Club

B. S. U. Council

Owen County Club

Y. W. C. A.

Pencil and Brush Club

Social Science Club



DELMON HOWARD, A. B.

"John"

BETSY LAYNE, KENTUCKY

Major—Rural Education

Rural Life Club, President, '32, '33

Agriculture Club '31, '32, Treasurer '33

Social Science Club '33

Favorite Saying: "Just going this way once."



# The MILESTONE

HELENA HOLTON PARK, A. B.

"Nene"

RICHMOND, KENTUCKY

Major—Music  
Madrigal Club; Social Science Club  
Orchestra  
Voice Scholarship '31, '32



FRANK CONGLETON, B. S.

"Frank"

RICHMOND, KENTUCKY

Major—Chemistry  
Football



ANNA LANE EVERSOLE, A. B.

"Ann"

COW CREEK, KENTUCKY

Major—English  
Y. W. C. A.  
Horace Mann  
Rural Life Club  
Y. W. C. A., President  
Upper Grade Teachers Council



# The MILESTONE



GLADYS HOLLAR, A. B.  
"Gay"

CARLISLE, KENTUCKY

Major—Intermediate Education  
Elementary Council  
Social Science Club  
Y. W. C. A.



RAYMOND DEMPSEY BALLOU, A. B.  
"Demps"

WILLIAMSBURG, KENTUCKY

Major—Social Science  
Baseball  
Social Science Club



IVA FAYE EGNER, B. S.  
"Iva"

ROCKHOLDS, KENTUCKY

Major—Mathematics  
Madrigal Club '31, '33  
Orchestra '31, '33  
"Pep" Club, President  
Upper Cumberland Club, Secretary  
C. E. A.; Y. W. C. A.  
Milestone Staff  
Social Science Club  
Favorite Saying: "Well, I'll go back."



# The MILESTONE

BEN HORD, B. S.

"Ben"

RICHMOND, KENTUCKY

Major—Mathematics

Football '30, '31, '32, '33

Football Captain '32

Basketball '30, '31, '32, '33

Treasurer, Junior Class '30, '31

Baseball '31, '32, '33

"E" Club

Favorite Saying: "Stay in there and fight 'em."



MATTIE TOLBERT, A. B.

"Mattia"

OWENTON, KENTUCKY

Major—English

Y. W. C. A.; B. S. U. Council

Alpha Zeta Kappa, Secretary and Treasurer

Social Science Club; Owen County Club

Pencil and Brush Club

Chapel Program Representative

Favorite Saying: "Dutch, Dutch, be sure and be here when I get back."



REY STOCKER BROCK, A. B.

"Reyfus"

RICHMOND, KENTUCKY

Major—English

Canterbury Club; World Affairs Club

Favorite Saying: "My progress was impeded."



# The MILESTONE



ARTHUR CHESTER EVERSOLE, A. B.

"Typo"

TYPO, KENTUCKY

Major—Rural Education  
Agriculture Club  
Y. M. C. A., President  
Rural Life Club, Secretary  
"E" Club, Treasurer  
Baseball

Favorite Saying: "Are you telling me?"



GENEVA FERRELL, A. B.

"Ne"

RICHMOND, KENTUCKY

Major—Elementary Education  
Madrigal Club  
Elementary Council  
Student Usher



WILLIAM HIGGINS MASTERS, A. B.

"Bill"

WISEMANTOWN, KENTUCKY

Major—Rural Education  
Social Science Club  
Rural Life Club  
Baseball  
Favorite Saying: "By Joe."



# The MILESTONE

ZYLPHIA PETERS, B. S.

"Zylph"

MARYDELL, KENTUCKY

Major—Home Economics  
Home Economics Club  
Y. W. C. A.  
Horace Mann Literary Club, '29  
Favorite Saying: "Don't die on third base."



ARTHUR J. LLOYD, A. B.

"Doc"

SUSIE, KENTUCKY

Major—Social Science  
Milestone Staff, '29  
Art Club, '30  
Social Science Club



MARTHA JANE CULTON, A. B.

"Mark"

CORBIN, KENTUCKY

Major—Latin  
Sigma Lambda  
Canterbury Club  
Upper Cumberland Club  
Y. W. C. A.  
Social Committee  
Social Science Club  
Sigma Tau Pi  
Favorite Saying: "You're telling me?"



# The MILESTONE



FAY WARD LITTLE, A. B.

"Little"

STANFORD, KENTUCKY

Major—English  
Little Theatre Club  
Y. W. C. A.



R. A. JUSTICE, A. B.

"R. A."

PIKEVILLE, KENTUCKY

Major—Rural Education  
Excelsior Literary Society, President  
Social Science Club  
Rural Life Club, Vice-President  
Favorite Saying: "You are the fellow who has to decide."



MRS. BESSIE K. BALLINGER, A. B.

"Bessie K."

CYNTHIANA, KENTUCKY

Major—Social Science  
Y. W. C. A.  
Social Science Club  
Canterbury Club; World Affairs Club



# The MILESTONE

DENVER HOSKINS, A. B.

"Slim"

BUSH, KENTUCKY

Major—Social Science  
Social Science Club  
Sigma Tau Pi  
Y. M. C. A.



MYRA DEE RICE, A. B.

"Dee"

LEXINGTON, KENTUCKY

Major—Physical Education  
Madrigal Club '32, '33  
Social Science Club '32, '33  
Sigma Psi Sigma '32, '33  
Milestone Staff '33  
Opera, "Martha" '33  
Favorite Saying: "It's a great life!"



KARL NORFLEET SMITH, B. S.

"Karl"

DANVILLE, KENTUCKY

Major—Chemistry  
Football; Baseball  
Orchestra; String Trio  
Biology Club; Chemistry Club  
Social Science Club; Rural Life Club  
Favorite Saying: "Don't let your head get you into anything that your feet can't get you out of."





# The MILESTONE

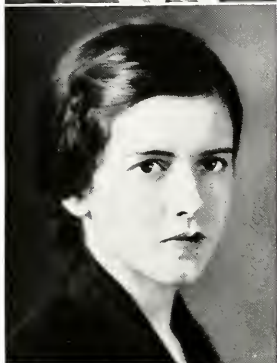


THOMAS WILLIAM EVERSOLE, A. B.

"Tom"

COW CREEK, KENTUCKY

Major—Rural Education  
Rural Life Club  
Track and Field Sports  
Certificate Class, President, '26  
Neon Krypton Literary Club



DELLAH MAREE COATES, A. B.

"Dellah"

RICHMOND, KENTUCKY

Major—English  
Little Theatre Club, Secretary '32  
Sigma Lambda '30, '31  
Milestone Staff '33  
Favorite Saying: "Say not so, surely it could not  
was."



CLIFTON DOWELL, B. S.

"Clif"

RUSSELL SPRINGS, KENTUCKY

Major—Mathematics  
Basketball, Captain, '33  
Football; Track  
Physical Education Club, President  
"E" Club  
Sigma Tau Pi  
Milestone



# The MILESTONE

FLORENCE DUDLEY, A. B.

"Dud"

RICHMOND, KENTUCKY

Major—Latin  
Sigma Lambda, President '32, '33  
Social Science Club  
Chapel Program Committee



FRANCES COX, A. B.

"Frank"

LAWRENCEBURG, KENTUCKY

Major—English  
Y. W. C. A.  
Social Science Club  
Anderson County Club



RUTH CORUM, B. S.

"Ruthie"

CORBIN, KENTUCKY

Major—Home Economics  
Home Economics Club, Vice-President '33  
Upper Cumberland Club, Vice-President '33



# The MILESTONE



OPAL POWELL, A. B.

"Pal"

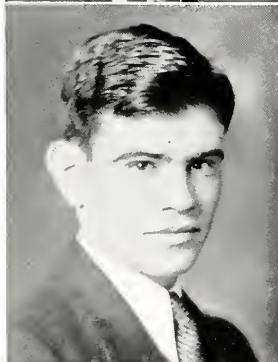
IRVINE, KENTUCKY

Major—Mathematics

Sigma Lambda

Canterbury Club

Favorite Saying: "Why not?"



J. MENDEL PARSONS, B. S.

"Pee Wee"

BEREA, KENTUCKY

Major—Mathematics

Football '29, '31, '32

Baseball '31, '32, '33

"E" Club, Vice-President

Favorite Saying: "Forget It"



IDA MAY POWELL, A. B.

"May-Day"

NICHOLASVILLE, KENTUCKY

Major—English



# The MILESTONE

RILEY A. REES, A. B.

"Rile"

FOSTER, KENTUCKY

Major—Agriculture

Agriculture Forum

Y. M. C. A.



THELMA WILLOUGHBY, A. B.

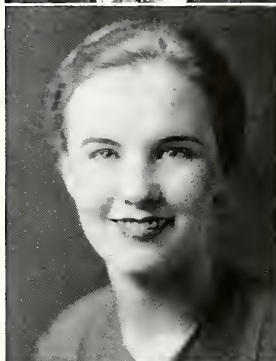
"Snookie"

RICHMOND, KENTUCKY

Major—English

Elementary Council

Favorite Saying: "Let's all be happy and gay."



VIRGINIA SPILLMAN, A. B.

"Virginia"

BEDFORD, KENTUCKY

Major—Elementary Education

Social Science Club

Elementary Council

Y. W. C. A. Cabinet

Home Economics Club



# The MILESTONE



HERBERT BRIDWELL TUDOR, B. S.  
"Speck"

PAINT LICK, KENTUCKY

Major—Social Science

Baseball; Tennis

Favorite Saying: "Whom are you talking about?"



MARY ELIZABETH STEWART, B. S.  
"Betty"

RICHMOND, KENTUCKY

Major—Home Economics

Home Economics Club, Vice-President '31,  
President '32

Junior Class Secretary '32

Milestone, Associate Editor '32

Baptist Student Union, Vice-President '32, '33

Alpha Zeta Kappa

Little Theatre Club

Progress Staff



ORA M. DUNBAR, B. S.  
"Red"

JAMESTOWN, KENTUCKY

Major—Chemistry

Y. W. C. A.



# The MILESTONE

MRS. HERBERT BRIDWELL TUDOR,  
A. B.  
"Snap"

CARLISLE, KENTUCKY

Major—English

Favorite Saying: "I'll Be Seeing You."



C. FRANK BENTLEY, A. B.  
"Frank"

CANE CREEK, KENTUCKY

Major—Social Science

Basketball; Tennis

Y. M. C. A.



SALLIE FLORENCE BROOKS, A. B.  
"Sara"

BRODHEAD, KENTUCKY

Major—Social Science

Social Science Club

Elementary Council

Y. W. C. A.



# The MILESTONE



VIRGINIA GANNAWAY, B. S.

"Ginny"

HODGENVILLE, KENTUCKY

Major—Home Economics  
Home Economics Club '31, '32, '33  
B. S. U. Council  
Y. W. C. A.



IRENE THOMAS, A. B.

"Irene"

LAWRENCEBURG, KENTUCKY

Major—Elementary Education  
Y. W. C. A.  
Elementary Council  
Social Science Club  
World Affairs Club  
Home Economics Club  
Dormitory Student Council  
Anderson County Club, Secretary and Treasurer



IDA ELSIE UELTSCHI, A. B.

"Ooche"

FRANKFORT, KENTUCKY

Major—Elementary Education  
Y. W. C. A.  
Sigma Lambda  
Elementary Council



# The MILESTONE

IRVIN I. EASTIN, B. S.

"Bertha"

JELICO, TENNESSEE

Major—Mathematics

Little Theatre Club

"E" Club

Sigma Psi Sigma

Favorite Saying: "Beats me."



RUTH SCHAEFFER, B. S.

"Ruth"

HEIDELBERG, KENTUCKY

Major—Home Economics

Home Economics Club



MARY FRANCES BELWOOD, A. B.

"Mary"

CROPPER, KENTUCKY

Major—Commerce

Sigma Tau Pi

Madrigal Club

Orchestra

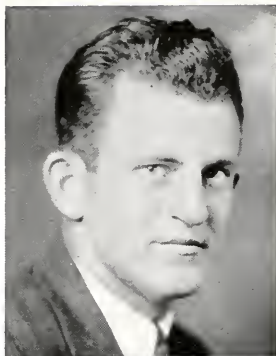
Home Economics Club

Horace Mann





# The MILESTONE



CARL FRANCIS GARRETT, B. S.

"Cow"

WADDY, KENTUCKY

Major—Mathematics  
Football '31; Baseball '31  
Cafeteria Club '32  
Social Science Club '33



EULA MAXINE VICARS, A. B.

"Max"

PINEVILLE, KENTUCKY

Major—Social Science  
Upper Cumberland Club  
Social Science Club  
Favorite Saying: "Oh gee!"



BEVERLY MAE GRINSTEAD, B. S.

"Speck"

WACO, KENTUCKY

Major—Mathematics  
Orchestra '27  
Social Science Club  
Biology Club  
Favorite Saying: "Oh Yeah!"



# The MILESTONE

FRANCES ARLINE YOUNG, A. B.

"Frankie"

COLUMBIA, KENTUCKY

Major—Rural Education

Y. W. C. A.

World Affairs Club; Rural Life Club

Orchestra

Dormitory Student Council, Secretary

Social Committee

Favorite Saying: "Ssh! Be Quiet!"



CLARENCE D. HARMON, B. S.

"Clarence"

PINE KNOT, KENTUCKY

Major—Mathematics

Freshman Class, President '27

Open Forum '27

Commerce Club, President '27

Horace Mann



HAZEL NELL WALLEN, A. B.

"Nell"

HINDMAN, KENTUCKY

Major—Primary Education

Y. W. C. A.

Canterbury Club

Elementary Council

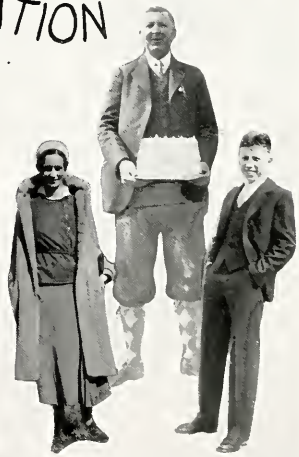
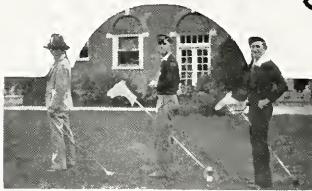
Favorite Saying: "Laugh and the world laughs with you."



# The MILESTONE



## CONGLOMERATION





J. D. TURLEY, JR.  
PRESIDENT

GARVIS KINCAID  
VICE-PRESIDENT

MARY EDMONDS BARNHILL  
CLASS SPONSOR

MARY ELSTON  
SECRETARY

T. C. McDANIEL  
TREASURER



# JUNIORS

# The MILESTONE

## Class of '34

"The Junior Class" will very soon close a successful run of three years on Broadway. This play was written and has been produced by members of the Eastern State Teachers College Company. Most of the members of the cast as well as most of those who have attended the many performances are from Kentucky.

The play itself is a combination of light comedy which runs through the second act, and heavier drama which reaches its climax just preceding the curtain. The setting is modern: A co-education institution in Kentucky, from the fall of 1930 until the spring of 1933.

The first act opens early in October with some seven hundred ambitious freshmen clamoring for recognition. Soon a president is chosen who proves incapable for leading a class of this kind, however the error is soon erased by the expert leadership of a second president.

In athletics the boys far excel past records, and establish one long to be used as a goal. On the gridiron eleven fighting, courageous men ring down the curtain on an undaunted season, after contesting some of the strongest teams both in and out of Kentucky.

On the hardwood the same flashing spirit prevails and finis is written across a page whereon no defeats have been recorded.

The public is not to conclude that the girls have no part in the first act. One of the highest honors of the year is bestowed upon a girl of this freshman class who was chosen "Miss Eastern" and later at the Mountain Laurel Festival, "Miss Eastern Kentucky."

Aside from these extra-curricula activities, some of the highest scholastic honors of the year are awarded to its members.

Despite the fact that the cast in the second act is reduced to approximately one-third its original size, they turn to the succeeding freshmen with the "we'll get them" attitude.

Under practically the same leaders the under-grads set about to establish themselves on the campus. Sophomores are into everything, around at all times offering "helpful" suggestions. They soon become known as the most persistent class in the college.

Through picnics and parties its members come to know each other; this results in better organization, but the most successful and dazzling event of the act is the dance given by the cast.

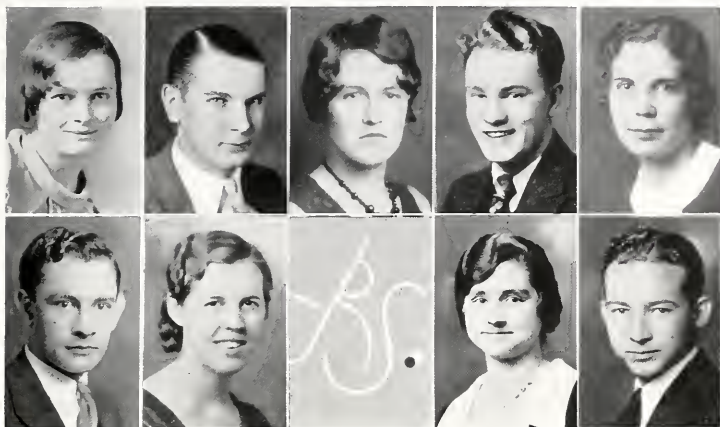
The third act begins the following September when the cast is again diminished. The former president resigns and a new one reigns over a class that faces many tasks; tasks that require thought and work, but the attitude with which these problems are faced is admirable. The three great issues are: backing the Milestone, chapel programs, and the climax, the Junior Prom.

The chapel programs are unique, surpassing by far any other class programs presented.

The Prom, which is the social event of the year is being typical of this class—a success. After the crowning of the Prom Queen the couples dance under beautiful decorations to the exhilarating music of a good orchestra. The dance is ended; the curtain drawn; the Racketeers render an appreciative postlude; the play is over.

This gives a brief review of "The Junior Class" as seen from an orchestra seat. It is probably the best modern play with a college setting that has been produced, and the directors: Dr. Cuff, Dr. Herndon, and Mrs. Barnhill are to be congratulated for their excellent supervision.

# The MILESTONE



MAYME EDITH WILLIAMS  
"Mayme"  
Sewellton, Kentucky

STEPHENA BRUMFIELD  
"Steve"  
Nicholasville, Kentucky

MILDRED BOYER  
"Milly"  
Campelsburg, Kentucky

ALBERT W. CRUMBAUGH  
"Al"  
Augusta, Kentucky

TALMADGE DEWITT  
"Tallie"  
Corbin, Kentucky

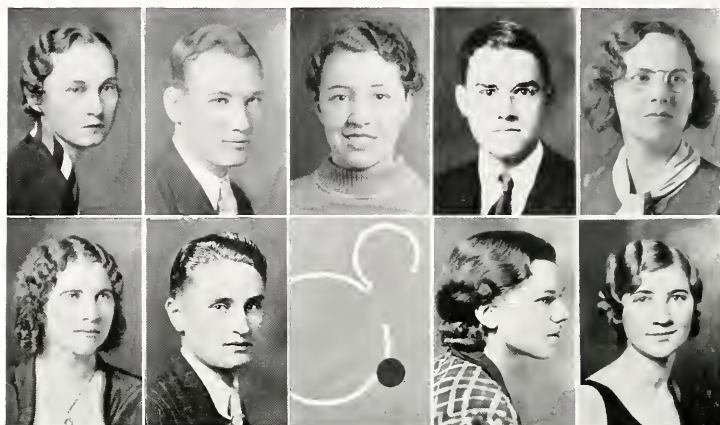
CLIFFORD R. RADER  
"Cliff"  
Egypt, Kentucky

J. D. TURLEY, JR.  
"J. D."  
Harrodsburg, Kentucky

ESTELLE MAY HELLER  
"Happy"  
Dayton, Kentucky

MARTHA NICHOLSON  
"Pocahontas"  
Tinker, Kentucky

# The MILESTONE



DOROTHY DEAN WAGONER

"Dot"

Carlisle, Kentucky

RUBY WATSON

"Wart"

Lexington, Kentucky

MRS. W. T. BROWN

"Brownie"

Harlan, Kentucky

ELMER CLAYTON MENIFEE

"Minnee"

North Middletown, Kentucky

HAROLD PRIM

"Harold"

Bellevue, Kentucky

BERNICE RAMEY

"Bunny"

McAndrews, Kentucky

IVALEE PARRISH

"IVA"

Richmond, Kentucky

T. C. McDANIEL

"Mac"

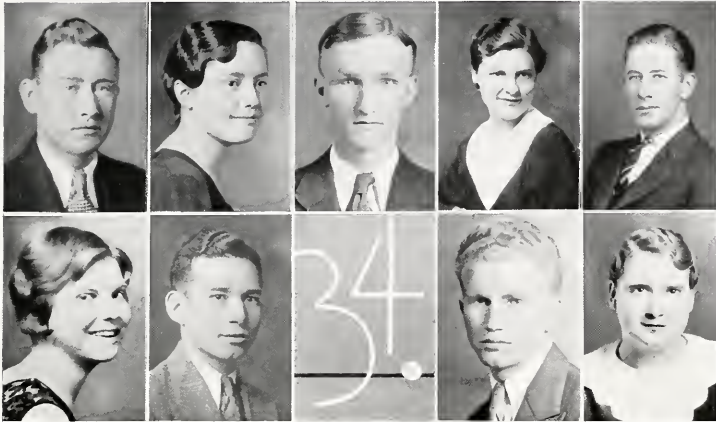
Burning Springs, Kentucky

ELEANOR MARIE STONE

"Ree"

Pikeville, Kentucky

# The MILESTONE



RALPH D. POWERS  
"Heaven Eyes"  
Parmleysville, Kentucky

JOHN TARTER  
"Johnie"  
Mintonville, Kentucky

GEORGE CARRELL  
"Bosco"  
Louisville, Kentucky

SARA MARGARET WHITE  
"Sara"  
Richmond, Kentucky

MARY ELSTON  
"Mary"  
Turner's Station, Kentucky

PAULINE GOATLEY  
"Polly"  
Springfield, Kentucky

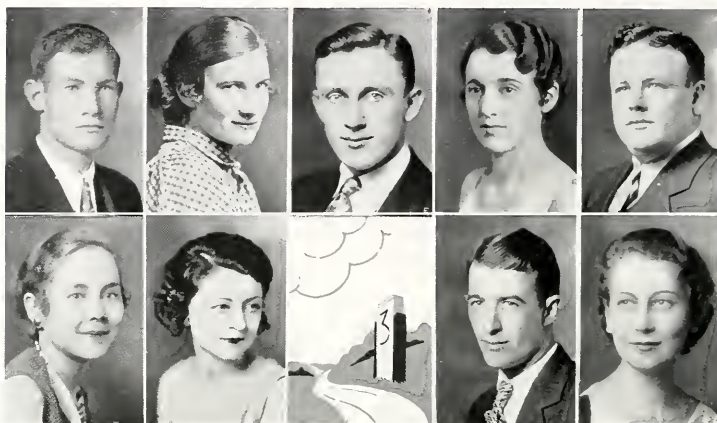
ELIZABETH G. GRAGG  
"Lib"  
Pineville, Kentucky

CARL ALLEN  
"Shorty"  
Liberty, Kentucky

CASEY MORTON  
"Curley"  
Blackey, Kentucky



# The MILESTONE



W. F. DOANE  
"Shorty"  
London, Kentucky

GARVICE DELMAR KINCAID  
"C. D."  
Richmond, Kentucky

NEWTON OAKES  
"Paddle"  
Oldtown, Kentucky

RUTH WHEATLEY  
"Ruth"  
Sardis, Kentucky

MARGARET ADAIR RIDDLE  
"Puzzle"  
London, Kentucky

LANNIE MCKINLEY  
"Baby Face"  
Middlesboro, Kentucky

MARY FRANCES ARNOLD  
"Mary Frances"  
Falmouth, Kentucky

BETTY ROUSSEAU HANGER  
"Betty"  
Richmond, Kentucky

RICHARD HAMLIN  
"Dick"  
Whitley City, Kentucky



SAM BECKLEY  
PRESIDENT

HOMER ROBBINS  
VICE-PRESIDENT

T. C. HERNDON  
CLASS SPONSOR

LLOYD DYKES  
TREASURER

ELIZABETH CLOUSE MITCHELL  
SECRETARY



# SOPHOMORES

# The MILESTONE

## Class of '35

We want to follow the custom established by other sophomore classes of leaving some written record of our attainments and fulfilled ambitions. We will go further, however, and not only present but impress upon you the highlights of the class of 1935.

We came here on September 18, 1931, four hundred and fifteen strong. Many were the chides and taunts we bore with no other consolation than the thought that we would be the Frosh of the school just one of our four years of college life.

Back we came the next year. Not so many, perhaps, but still quite notably inclined and varied in our abilities, ambitions, interests, and ideals. We were as one in our desire to make the class of 1935 one of the most prominent Eastern will ever offer. To suggest, guide, and make successful our ambitions, we turned to Sam Beckley, president; Homer Robbins, vice-president; Lloyd Dykes, treasurer; and Elizabeth Clause, secretary.

It was the active parts, which members of this group took from the first that made others recognize the Sophomores as an outstanding class. We present our honors as proof, if such be necessary. We have not only furnished many to the football squad, but we have walked off with the Captainship in our clutches. We contributed basketball material to the varsity, offered the first coed editor of the Eastern Progress, and we have the president of the Y. M. C. A. in our midst.

Our leadership has very capably rested with Dr. Thomas C. Herndon who so willingly and thoroughly put all his interests into "seeing us through." Although we offer a great year's record of literary, athletic, and social success, we recognize and appreciate the help of others who share our achievements.

Some of us are to launch into our teaching career. For others it is the end of their school life, but even then they plan to do their bit in the struggle for a better Kentucky. Others, too, are looking forward to graduation at the end of more years of college work. No matter which category we choose to place ourselves in, we will aim at the highest star and continue our climb.

We have missed those who have left us and cheerfully welcomed all newcomers. Even though we may all separate to meet no more, we will never lose our happy memories of Eastern, and will hold her always as dear as our most cherished possession.

A sacred burden is this thing life ye bear:  
Look on it, lift it, bear it solemnly,  
Stand up and walk beneath it steadfastly,  
Fail not for sorrow, falter not for sin:  
But onward, upward, till the goal ye win.

—Frances Anne Kemble

# The MILESTONE



EARL T. HENDERSON  
Bethlehem, Kentucky

JOHN CONLEE BELL  
Stearns, Kentucky

HELEN BURTON  
Portsmouth, Kentucky

HELEN OPAL VAUGHT  
Somerset, Kentucky

VERNA HILTON  
Pine Hill, Kentucky

MIRIAM HERBST  
Ashland, Kentucky

DORSEY F. REYNOLDS  
Tyner, Kentucky

LUCILE CASE  
Richmond, Kentucky

MABEL McKINNEY  
Hazard, Kentucky

FAY WHITE  
Catlettsburg, Kentucky

MARY ELLEN WILLIAMS  
Harlan, Kentucky

ANNA GENE WELLS  
Mt. Sterling, Kentucky

# The MILESTONE



DOROTHY PERRY TYNG  
Richmond, Kentucky

ADA GRAY GILLIAM  
Corbin, Kentucky

THOMAS PAULL BURDETTE  
Columbia, Kentucky

SAM C. BECKLEY  
Shelbyville, Kentucky

BEN ASHMORE  
Madisonville, Kentucky

WILLIAM LANGFORD CLARK  
Richmond, Kentucky

JACK ALLEN  
Prestonburg, Kentucky

EMMA LOUISE CONRAD  
Falmouth, Kentucky

CHLORINE PAYNTER  
Mayslick, Kentucky

RUTH TALBOTT  
North Middletown, Kentucky

ELIZABETH ANN MILLARD  
Louisa, Kentucky

PAULINE GOOCH ESTES  
Eubank, Kentucky

# The MILESTONE



ALLEN BROOKS HINKLE  
Little Rock, Kentucky

JAMES S. HARTER  
Cynthiana, Kentucky

ELIZABETH CLOUSE MITCHELL  
Richmond, Kentucky

JULIA LOUISE MONEYHON  
Augusta, Kentucky

MARIE LUCILLE HARMON  
Whitley City, Kentucky

VIVIAN BUCKSHORN  
Covington, Kentucky

NAOMI GREEN  
Booneville, Kentucky

VIRGIL ROWLETTE  
Richmond, Kentucky

LLOYD DYKES  
Luretha, Kentucky

ANNA RUSSELL OATTS  
Somerset, Kentucky

WILLIAM HOMER ROBBINS  
Science Hill, Kentucky

MINOR EDWARD CLARK  
Waddy, Kentucky

# The MILESTONE



ZELLA ROWENA SMITH  
Estelle, Kentucky

FRANCES L. STRICKLETT  
Vanceburg, Kentucky

WILLIAM GRIFFEY  
Springfield, Kentucky

WILLIAM ROBERT TURPIN  
Richmond, Kentucky

ELMER B. HART  
Bardstown, Kentucky

RUTH MARIE HERRELL  
Middlesboro, Kentucky

WILLIAM Z. LAWSON  
Monticello, Kentucky

LOUISE YOUNG  
Bagdad, Kentucky

MAUD RITCHIE McLAUGHLIN  
Richmond, Kentucky

DOROTHY LEE McKENZIE  
Covington, Kentucky

DAISY BROUGHTON  
Pineville, Kentucky

RUBY ELLEN WARFIELD  
Barbourville, Kentucky



WALTER L. MAVITY  
PRESIDENT

FRANCES HANNA  
SECRETARY-TREASURER

NOEL B. CUFF  
CLASS SPONSOR

STEVE CUFF  
MASCOT



# FRESHMEN



# The MILESTONE

## Class of '36

During the first few days we were here we felt that each of us owned a good-sized share in the place, because there were no upper classmen here to disturb our orientation activities. But, like all good things, our few days of peace soon came to an end when the campus and halls began to be swarmed with sophomores, juniors, and those abominable seniors!

They were not content merely to look down upon us but even began plotting and conspiring against us, and before long we were creeping in and out side doors with wood-pecker tops. It was then that we had to suffer many indignities—but not for long, because our rebellious spirits were aroused and after the first few days we boldly used front entrances and discarded the tell-tale, maroon and white hats, our courage being in our great numbers.

Yes, we were exceptional freshmen—we braved the paths where others feared to tread by defying the Mystic Six after only a few days of their torturesome executions.

Among our other good qualities (other than the above exemplified courage) we may list initiative, for there are many freshmen who have become valuable assets to some of the various organizations; scholarship, there being four freshmen who made forty or more grade points; and school loyalty, for the freshmen have been faithful both to sport activities and the art productions.

We have been exceptional freshmen; we hope to be exceptional as sophomores, juniors, seniors, and citizens. As leaders toward this end we have chosen Walter Mavity, Somerset, president; Harvey Chenault, Richmond, vice-president; and Frances Hanna, Shelbyville, secretary-treasurer.

# The MILESTONE



ROBERT TERRILL  
Richmond, Kentucky

DELBERT PARTIN  
Hazard, Kentucky

ROBERT RICE  
Richmond, Kentucky

MARTHA L. STEVENS  
Alexandria, Kentucky

RUTH GERMAN  
Bellevue, Kentucky

EDWINA MURRAY  
Ashland, Kentucky

MARIE KRUEGER  
Mt. Vernon, Kentucky

PAULINE ALLRED  
Wallins Creek, Kentucky

HUBERT VAUGHN  
Corbin, Kentucky

BOYD LONG  
Russellville, Kentucky

THOMAS FARRIS  
Richmond, Kentucky

GARNESS SNAPP  
Gravel Switch, Kentucky

BENNETT ROSE  
Richmond, Kentucky

MARY FISK  
Kenton, Kentucky

VIRGINIA SOUTH  
Frankfort, Kentucky

# The MILESTONE



PHOEBE E. WILLIAMS  
Harlan, Kentucky

MARY KATHRYN INGELS  
Cynthiana, Kentucky

EDITH CAMPBELL  
Booneville, Kentucky

WALTER L. MAVITY  
Somerset, Kentucky

GEORGE FOX  
Ashland, Kentucky

FORREST MORELAND  
Georgetown, Kentucky

BERNICE WINSTON  
Latonia, Kentucky

W. E. BECKNELL  
Island City, Kentucky

LEANORA HOFFMAN  
Crittenden, Kentucky

FRANCES HANNA  
Shelbyville, Kentucky

EUNICE WATSON  
Lexington, Kentucky

HARVEY CHENAULT  
Richmond, Kentucky

JOSEPHINE DUNN  
Houstonville, Kentucky

VIRGINIA MINK  
Livingston, Kentucky

SUSANNE KIRK  
Houstonville, Kentucky

# The MILESTONE



KELLY KIRKLAND  
Gravel Switch, Kentucky

NANNIE ROBERTS  
Walton, Kentucky

CHARLES BELUE  
Richmond, Kentucky

MARJORIE SMITH  
Corbin, Kentucky

ANN WILSON  
Lee City, Kentucky

HAZEL RICHARDSON  
Kenton, Kentucky

CLAUDE WILLIS  
Gest, Kentucky

LILLIAN COX  
Paint Lick, Kentucky

JESSIE MOORE  
Tallesboro, Kentucky

MELVA WALKER  
Bellevue, Kentucky

BESSIE BAUMGARDNER  
Middlesboro, Kentucky

EDNA McHARGUE  
Pine Hill, Kentucky

MARTHA WYNN  
Deputy, Indiana

CARRIE L. DUNAGAN  
Houstonville, Kentucky

BURETIA HOLBROOK  
Prestonburg, Kentucky

# The MILESTONE



GEORGETTA MOORE  
Tallesboro, Kentucky

KATHRYN CLARK  
Paint Lick, Kentucky

EVELYN SWOPE  
Winchester, Kentucky

EARL CREECH  
Tyner, Kentucky

ROY GOVER  
Somerset, Kentucky

RUTHEFORD CAMPBELL  
Hazard, Kentucky

WILLIAM ROUSE  
California, Kentucky

FRANK HILL  
Germantown, Kentucky

JANE WINTRING  
Covington, Kentucky

SARA GOODRICH  
Frankfort, Kentucky

MARY ALLISON  
Sardis, Kentucky

ADELAIDE GRAY  
Newport, Kentucky

HARRIET SCHACKLEFORD  
Mt. Sterling, Kentucky

SAM STROUS  
Catlettsburg, Kentucky

TAD MORGAN  
Busy, Kentucky

# The MILESTONE



ELIZABETH HALL  
Covington, Kentucky

LAVON McINTYRE  
Harlan, Kentucky

MILDRED HANCOCK  
Owenton, Kentucky

BERTRAND FIELDS  
Cumberland, Kentucky

FRAZIER B. ADAMS  
Jeremiah, Kentucky

COFFMAN BELL  
Owenton, Kentucky

LAURANELL CUMMINS  
Morning View, Kentucky

LESTER CAMPBELL  
Booneville, Kentucky

EDITH LEE PYLES  
Campbellsburg, Kentucky

NELLY NEWSOM  
Stanford, Kentucky

MYRTLE CARNES  
DeWitt, Kentucky

EULA M. FERGUSON  
Mt. Vernon, Kentucky

VIRGINIA JONES  
Beaver Lick, Kentucky

HELEN RICHARDSON  
Kenton, Kentucky

ANNA W. WYLES  
Cynthiana, Kentucky

# The MILESTONE



AUSTIN RIGSBY  
Louellen, Kentucky

GEORGE FRANK HALL  
Wallen's Creek, Kentucky

WILLIAM CAMPBELL  
Booneville, Kentucky

WILMA BOND  
Richmond, Kentucky

DOROTHY CREWS  
Shelbyville, Kentucky

ELSIE LAWSON  
Paint Lick, Kentucky

LOUISE D. REYNOLDS  
Shelbyville, Kentucky

FRANCES HOLLOWAY  
Chattanooga, Tennessee

ERCEL KOZEE  
John's Run, Kentucky

EUGENE WILLIAMSON  
Oxford, Kentucky

CECIL EBERSBAKER  
Lockport, Kentucky

ROSS THURMOND  
Lockport, Kentucky

LEWIS METCALFE  
Richmond, Kentucky

MARTHA DRAKE  
Mt. Sterling, Kentucky

ELIZABETH MARZ  
Newport, Kentucky



Page  
32

# CELEBRITIES





Marion Hagan

*Miss Eastern*



Mary Elston



Helen Stidham

*Attendants*

*Most Academic*



Dorothy Tynb



Vaughn LeMasters

*Most Outstanding Athlete*



Ben Ford

*Most Popular*



George Carrell



Lucy Mitchell



# ATHLETICS

# The MILESTONE



## Coaches

TOM C. SAMUELS, B. S.  
Line Coach

A new edition to our coaching staff who has already proved his worth and value to the squad.

CHARLES "Turkey" HUGHES, A. B.  
Athletic Coach

The leader of the boys that so faithfully and unsparingly fight on for Eastern and her victories.

ALFRED E. PORTWOOD, A. B.  
Freshman Coach and  
Physical Education

He starts them over the right road that prepares them for future glories for Eastern.

# The MILESTONE

## Varsity Football

The Eastern football squad of 1932 made its season the most successful in five years. Throughout the entire season the team kept up a fighting spirit unequalled by that of any opponent showing excellent cooperation in every combat.

With such a team Coach "Turkey" Hughes, head athletic mentor, and Big Tom Samuels, line coach, were able to build up a team with which no other team in the South could compete. Only during the first four minutes of the season when the Georgetown Tigers crossed the Maroons' goal line was any opponent able to score against them.

While expressing our appreciation of the team in general, we wish to mention Dowell as tackle, and Hinkle as guard, who showed unusual skill on the field and through their untiring efforts gained honorable mention on the all-state squad. Captain Ben Hord, quarterback, who ranked third in the state scoring contest also gaining the honor of being the first man Eastern has ever placed on the all-state squad. Ben, leading his men with an iron hand but cheering them on when they most needed encouragement, brought them through a spectacular season.

Eastern is proud of the 1932 football squad which has given to its Alma Mater a coveted position on the grid.

### SEASON'S RESULTS

Eastern	-----	6	Georgetown	-----	7
Eastern	-----	38	U. of L.	-----	0
Eastern	-----	0	Union	-----	0
Eastern	-----	0	Transy	-----	0
Eastern	-----	19	Morehead	-----	0

### NEXT YEAR'S SCHEDULE

Sept. 30	— open
Oct. 7	— Union at Richmond
Oct. 14	— Georgetown at Richmond
Oct. 21	— East Tenn. Teacher's at Richmond
Oct. 28	— open
Nov. 4	— Transylvania at Richmond
Nov. 11	— Morehead at Morehead
Nov. 18	— Louisville at Louisville
Nov. 25	— open

# The MILESTONE



MARSHALL "MUTT" WYATT  
HALFBACK



BEN HORD  
CAPTAIN  
QUARTERBACK



PAUL TIERNEY  
GUARD



CHARLES BROWN  
TACKLE



Z.T. RICE  
END



EARNEST "DOG" YOUNG  
CENTER



MENDEL PARSONS  
FULLBACK



WILFRED GAINES  
END



IRVIN "BERTHA" EASTIN  
TACKLE

# The MILESTONE



EARL RUPARD  
CENTER



LLOYD DYKES  
END



JAMES BURNETTE  
HALFBACK

FRANK CONGLETON  
GUARD



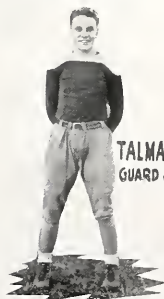
ED HILL  
HALFBACK



HOMER ROBBINS  
HALFBACK



J.T. HINKLE  
GUARD



TALMADGE DeWITT  
GUARD & CENTER



NOEL HAIL  
HALFBACK

CLIFTON DOWELL  
TACKLE





# The MILESTONE

## Freshman Football

The Little Maroons of 1932 do not boast of a scoring season. It was very disappointing not to win any games but they displayed good teamwork and put up a real fight against the opposing teams.

The yearlings were able to keep the Georgetown Cubs from scoring against them but they battled against defeat in their other combats.

To have a winning football team next year, Eastern must depend upon the material found in the Freshman squad this year.

Cover, Greenwall, Brown and others showed brilliant prospects toward taking their places on the varsity squad and giving to Eastern an honorable position in the "Realm of Football".

# The MILESTONE



## SEASON'S RESULTS

Eastern..... 0	Transylvania .....	19
Eastern..... 0	Georgetown .....	0
Eastern..... 0	U. of L. ....	25
Eastern..... 0	Centre .....	27

# The MILESTONE

## Varsity Basketball

Although the Maroon basketeers did not win any state honors, we can still say they had a most successful season.

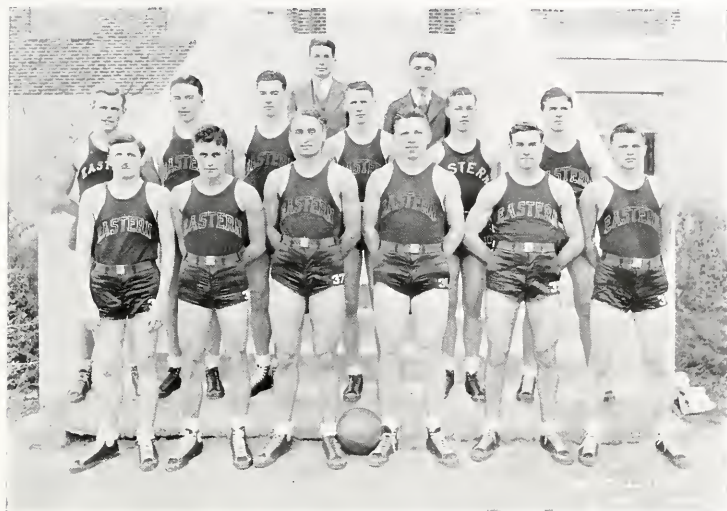
Famous players, claiming Eastern as their Alma Mater, came back to meet the varsity team in one of the season. The alumni fought hard but all in vain, for the Maroons at their best were able to defeat their distinguished guests 29 - 23. In addition to this and one independent game, Eastern was able to take twelve of fourteen games with Kentucky college teams. The two games lost were dropped to Western. Those two games were probably the hardest fought of the season, Eastern gave all she had in spirit and teamwork but Western got the breaks for points.

Although the Maroons were so unfortunate as to lose their first game in the Kentucky Intercollegiate Athletic Association tournament at Winchester, they were invited to attend the Southern Intercollegiate Athletic Association tournament at Jackson, Mississippi—because of their distinguished playing throughout the season. There, they were defeated 60 - 48 by Louisiana Normal, one of the strongest teams in the South.

Captain Clifton Dowell, forward, Adams and Hord at guard positions, were outstanding players, not only in the state but also in the South. This honor could never have been attained without the help of McDaniel at center, Feedback, the other forward, and Little Hale, alternate guard.

Never before have the students so loyally supported their team as they have this year, and they are proud of the victories won by the Maroons of '33.

# The MILESTONE



## RESULTS

Eastern.....	29	Alumni .....	23
Eastern.....	61	Irvine Independents .....	8
Eastern.....	47	Georgetown .....	26
Eastern.....	57	Transylvania .....	19
Eastern.....	50	Louisville .....	25
Eastern.....	19	Western .....	27
Eastern.....	53	Morehead .....	22
Eastern.....	44	Wesleyan .....	21
Eastern.....	54	Transylvania .....	30
Eastern.....	24	Western .....	31
Eastern.....	22	Berea .....	17
Eastern.....	32	Georgetown .....	19
Eastern.....	48	Morehead .....	40
Eastern.....	34	Berea .....	16
Eastern.....	34	Louisville .....	19
Eastern.....	29	Wesleyan .....	22

## TOURNAMENT

Eastern.....	19	Louisville .....	29
Eastern.....	48	Louisiana Normal .....	60

# The MILESTONE

## Frosh Basketball

When Coach Al Portwood issued his first call for prospective net men for the 1932-33 season, thirty-five freshmen rushed over to the equipment office to obtain uniforms. Numerous stars from leading high school quintets of last season turned out for practice and from this number came those players who made up Eastern's most famous yearling team.

The Baby Maroons went through the season with perfect attack, coupled with good defense and plenty of aggressiveness, the factors which marked them as winners among other freshmen teams.

Almost as much interest was manifested in the Baby Maroons as was shown the Eastern varsity. They were one of the biggest power houses for scoring that any freshmen team in the state has seen in several years. Even the freshmen five that won the state championship in 1930 did not have the scoring ability of this year's team.

Big Jim Brown, forward, led the individual scoring record of the team but he accomplished this only through the help of his other teammates. Gover at center showed skill in his handling of the ball while Storms and Elza, guards, put up a real defense against the opposing teams. The freshmen brought to us, this year, Tommy Scott, one of the fastest little forwards evers seen on Eastern's hardwood.

Bright prospects are in store for the Big Maroons next year when the famous freshmen team of '33 shall take its place with the team.

# The MILESTONE



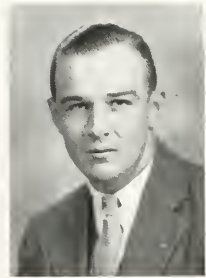
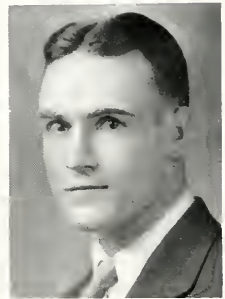
## SEASON'S RESULTS

Eastern.....	33	Western .....	32
Eastern.....	26	Western .....	22
Eastern.....	38	Kentucky .....	36
Eastern.....	32	Kentucky .....	37
Eastern.....	38	Berea .....	36
Eastern.....	45	Berea .....	33
Eastern.....	45	Ferguson High .....	16

# The MILESTONE



## PHYSICAL EDUCATION STAFF





CLUBS



# The MILESTONE



# *The* MILESTONE

## **Milestone Staff**

N. G. DENISTON, Faculty Advisor  
W. C. STEVENS, Editor-in-Chief  
C. R. RADER, Associate Editor  
LOUISE RUTLEDGE, Associate Editor  
ROSS C. ANDERSON, Business Manager  
GEORGE CARRELL, Assistant Business Manager  
MYRA DEE RICE, Assistant Business Manager  
VIVIAN BUCKSHORN, Sales Manager  
J. D. TURLEY, Art Editor  
BENNETT ROSE, Art Editor  
WILFRED GAINES, Sports Editor  
IVA FAYE EGNER, Sports Editor  
DELLA MARIE COATES, Typist  
CHLORINE PAYNTER, Snapshot Editor  
ELIZABETH MARZ, Freshman Representative  
WOODFORD ALEXANDER STEVENS, "Mascot"

# The MILESTONE



JACK BAYER PRES.



WALLER THACKER VICE PRES.



MISS BUCHANAN SPONSOR



LOUISE RUTLEDGE SEC'Y



CYRIL FIELDS STAGE MGR.



LILLIAN COX TREAS.



GARVICE KINCAID BUSINESS MGR.

# The MILESTONE



# The MILESTONE



## PROGRESS STAFF





# The MILESTONE



HOME ECONOMICS CLUB



# The MILESTONE



PRESIDENT

## "CANTERBURY" CLUB



VICE PRESIDENT



SECRETARY



SPONSOR



REPRESENTATIVE

### OFFICERS

WALLER BAILEY THACKER.....President  
LOUISE RUTLEDGE .....Vice-President  
MRS. BESSIE BALLINGER .....Secretary  
MARTHA CULTON .....Social Committee

### FACULTY

DR. ROY B. CLARKE, Sponsor  
MRS. MARY BARNHILL  
MR. W. L. KEENE

### MEMBERS

Nannie Bell DeJarnette	Mrs. Georgiana Knoppe
Mabel Dixon	Lucy East
Elizabeth Elmore	Chlorine Paynter
Mrs. Perry Long	Mrs. Ida Mae Powell
Mary Ann Patton	Mary E. Van Bever
Chester Spears	Verda Stamper
Ruth Wheatley	Mary Frances Arnold



# The MILESTONE



SPONSOR



SPONSOR



PRESIDENT



VICE PRESIDENT

## AGRICULTURAL FORUM



MOTTO: Farming for Prosperity

CALL: Calling the Hog

CLUB FLOWER: The Wild Rose

### CLUB ROLL

Orville Burkett  
Arthur W. Corns  
Arthur C. Eversole  
Elmer Hart  
Charles D. Howe  
Ercil Kozee  
Charles Morgan  
Bill Richards  
John H. Stamper  
Ross Thurmond

Lewis E. Metcalfe  
Carl M. Clifton  
Royal Graham  
D. W. Howard  
Hugh Jewell  
Boyd Long  
James F. Petrey  
Riley A. Rees  
Lloyd Switzer  
Claude Willis

# The MILESTONE



SPONSOR



VICE PRESIDENT



SECY & TREAS.

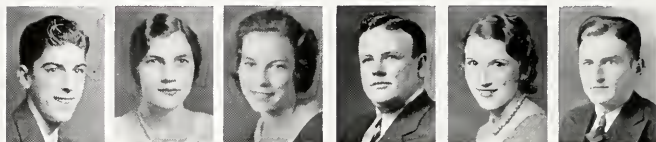


PRESIDENT

## ALPHA ZETA KAPPA



# The MILESTONE



SECY & TREAS.

PRESIDENT

VICE PRESIDENT

SPONSOR



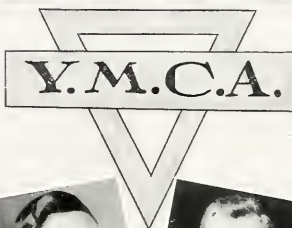
# The MILESTONE



SIGMA LAMBDA



# The MILESTONE



# The MILESTONE



TREASURER

PRESIDENT

VICE PRESIDENT

SECRETARY



## MEMBERS OF Y. W. C. A.

Kathrine Aldridge  
 Pauline Allred  
 Mary Allison  
 Lucille Beck  
 Hattie Berryman  
 Alma Best  
 Bessie K. Ballinger (Mrs.)  
 Alma Bishop  
 Mildred Boyer  
 Martha Blaine  
 Vivian Buckshorn  
 Helen Burton  
 Sally Brooks  
 Mildred Brummitt  
 Coldie Brumback  
 Myrtle Campbell  
 Natalie Collins  
 Louise Conrad  
 Annabelle Clary  
 Lucille Cooper  
 Laruanell Cummings  
 Lillian Cox  
 Dorothy Crews  
 Martha Mae Crouch  
 Carolyn Dailey  
 Ora Dunbar  
 Janet Dudderar  
 Carrie Lee Dunnigan  
 Josephine Dunn  
 Martha Drake  
 Mildred Egnew  
 Helen Estes  
 Iva Faye Egner

Lucy Frey  
 Mary M. Fisk  
 Ula Fike  
 Ada Grey Gilliam  
 Eulah Mae Ferguson  
 Emma Goodpaster  
 Ruth Cerman  
 Elizabeth Cragg  
 Emma Lee Graham  
 Sarah Goodrich  
 Thursa Hacker  
 Emma Haggan  
 Elizabeth Hall  
 Nell Hall  
 Sara Jane Hamblin  
 Adda Mae Hawkins  
 Ruth Herrell  
 Bessie Henry  
 Frances Hinkle  
 Mary K. Holcomb  
 Lenora Hoffman  
 Gladys Hollar  
 Nancy Holtzclaw  
 Luella Houchin  
 Anna Mae Jackson  
 Inez Jordan  
 Vivian Jody  
 Mable Kirkland  
 Merwin King  
 Marie Kruger  
 Louise Larkin  
 Margaret Lelese

Virginia Lilly  
 Beulah Lilly  
 Madge Literal  
 Anna Frank Martin  
 Mildred McCoy  
 Elizabeth McDaniels  
 Edna McHargue  
 Mary F. McKinney  
 Lavonne McIntyre  
 Lucille May  
 Sweet May  
 Lucy Mitchell  
 Corgetta Moore  
 Mary E. Miller  
 Beulah Moore  
 Edwina Murray  
 Jesse Moore  
 Mrs. Mary Neeley  
 Lucy Onstott  
 Clara Mae Nelson  
 Mary Ann Patton  
 Wilma Pfanstiel  
 Mildred Phillips  
 Florabel Poindexter  
 Vonnie Popplewell  
 Hazel Richardson  
 Forest Rose Roberts  
 Louise Reynolds  
 Genevieve Rogers  
 Dorothy Rupard  
 Harriet Shackelford  
 Blanche Sheley

Mary Frances Shelton  
 Amanda Skidmore  
 Mayme Singleton  
 Marjorie Slem  
 Naomia Singleton  
 Mildred Snodgrass  
 Virginia South  
 Martha Lou Stevens  
 Virginia Spillman  
 Erma Spenser  
 Evelyn Swope  
 Irene Thomas  
 Mary Tennyson  
 Mattie Tolbert  
 Ruth Talbott  
 Ida Ueltschi  
 Wanda Vanhook  
 Deloras Van Hoose  
 Helen Richardson  
 Geneva Waddie  
 Melva Walker  
 Ruth Wheatley  
 Alma Witt  
 Dorothy Wagoner  
 Fay White  
 Lillie Wilson  
 Mary Wolfard  
 Martha Wynn  
 Anna White Wyles  
 Arline Young  
 Eloise Young  
 Beulah Lewis

# The MILESTONE



## BAPTIST STUDENT UNION



# The MILESTONE



JAMES E. VAN PEURSEM  
DIRECTOR



RUBY  
WATSON



GARVICE KINCAID  
PRESIDENT

SPONSOR



## Band

### SAXOPHONES

Garvice Kincaid  
William Clark  
Evelyn Ausmus  
Richard Greenwell  
Jack Hamilton  
Taylor White  
Ben Wilson

### ALTOS

Gordon Nash  
Arthur Bowles  
Dan Denny  
Earl Powell  
Jack Fife

### PICCOLO

Harold Rigby

### CLARINETS

Richard Evans  
Sarah Land  
Elizabeth McDaniel  
Mary Lois Clark  
Owen Montgomery  
Dorothy Brock

### CORNETS

Thomas Bonny  
Neville Yater  
Thomas Farris  
R. E. Baker  
Chester Royce

### TROMBONES

Joe Blunsch  
Judy Hamilton  
Dorsey Reynolds

### DRUMS

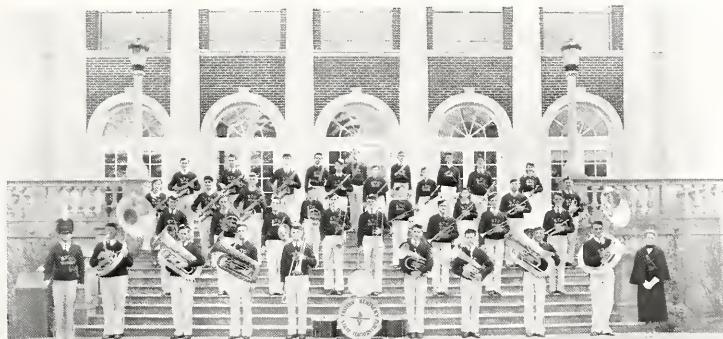
Joe Bender  
Kelly Wagers  
Charles Hamilton  
Donald Michelson  
Nelson Elder

### BARITONE

Morris Creech

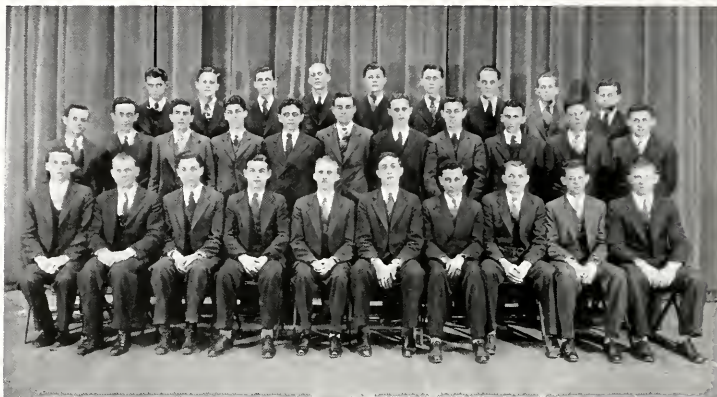
### BASSES

Earl Anderson  
Walter Engle  
Charles Hatfield  
Alvin Emerson





# The MILESTONE



## Men's Glee Club

DIRECTOR

JAS. E. VAN PEURSEN

### FIRST TENORS

Jack Allen  
Earl Anderson  
Joe Blunche  
Leighton Green  
William Fife  
Harold Mullens  
Earl Rupard  
Clifford Shulte

### SECOND TENORS

Ben Ashmore  
Arthur Corns  
Donald Michelson  
Harold Hieronymus  
Derbert Merenbloom  
Joe Mecci  
Bennett Rose  
Taylor White

### BARITONES

Cyril Fields  
Herbert Lewis  
Henry Lytle  
Walter Mavity  
Warfield Miller  
Harold Prim  
Waller Thacker

### BASSES

Carl Allen  
Richmond Collins  
Richard Evans  
Gordon Nash  
Dallas Reed  
Clifford Rader

# The MILESTONE



## Madrigal Club

### OFFICERS

MARY EVELYN ALLEN \_\_\_\_\_President  
BETTY CHENAULT \_\_\_\_\_Vice-President  
LOUISE YOUNG \_\_\_\_\_Social Representative  
CORNELIA NETTINGA \_\_\_\_\_Director

### MEMBERS

#### FRONT ROW

Mabel McKinney  
Glenna Strong  
Betty Chenault  
Pauline Coy  
Elizabeth Ann Millard  
Eleanor Stone  
Adelaide Gray  
Mamie Hamilton  
Bessie Baumgardner  
Iva Faye Egner

#### BACK ROW

Jeanette Hunter  
Margaret Durham  
Elizabeth Marz  
Frances Hannah  
Dorothy McKenzie  
Mary Evelyn Allen  
Cornelia Nettinga  
Louise Young  
Mary Frances Arnold  
Myra Dee Rice  
Evelyn Ausmus

# The MILESTONE



## Social Science Club

### OFFICERS

WILLIE HALL ----- President      SALEM MOODY ----- Vice-President

MARY F. SHELTON, Secretary-Treasurer

### FACULTY

C. A. KEITH, Sponsor

J. T. DORRIS

VIRGIL BURNS

### MEMBERS

Earl Adams  
 Frances Addis  
 Mary Evelyn Allen  
 Jack Allen  
 Ross Anderson  
 Nelle Anderson  
 Dessie Anderson  
 Elbert Angel  
 W. J. Arvin  
 Anna Arrosmith  
 Lucy Ashcraft  
 Bessie Balingier (Mrs.)  
 Dempsey Ballou  
 Mildred Boyer  
 Joe Bender  
 Nannie Scott Bishop  
 Annie Bogie  
 Mildred Bough  
 Gay Bradley  
 Charles Brumback  
 Stephens Brumfield  
 Lucian Burch  
 Thomas Burdette  
 James Burnette  
 Helen Burton  
 Georgia Bush  
 Eula Cable  
 Robert Cammack  
 J. E. Chadwell  
 Clara Clem  
 Estelle Collins  
 Ruby Combs  
 Christine Compton

Josh Cosby  
 Frances Cox  
 Thelma Croley  
 Alfred Cross  
 Martha Culton  
 Edgar Dabson  
 G. D. Dameron  
 Talmadge DeWitt  
 Ruby Watson  
 Thelma Wells  
 Blanche Wimble  
 Thelma Dixon  
 Donald Dorris  
 Florence Dudley  
 Albert Elza  
 Walter Engle  
 Eula Ferguson  
 Bill Fife  
 Eula Fike  
 W. M. Fleck  
 Ruby Frazier  
 Leslie Gay  
 Joyce Gregory  
 Ada Grey Gilliam  
 Royal Graham  
 Beverly Grimstead  
 C. G. Hamilton  
 James Hamilton  
 Frances Hannah  
 Leonard Harney  
 Ada Hawkins  
 Miriam Herbst  
 Brooks Hinkle

Denver Hoskins  
 Delmon Howard  
 C. D. Howe  
 Vera Humfleet  
 Garland Jett  
 Nancy Johnson  
 W. V. Johnson  
 R. A. Justice  
 Mildred Kincaid  
 Garvice Kincaid  
 Beulah Lewis  
 Madge Litterall  
 Arthur Lloyd  
 Robert Martin  
 William H. Masters  
 Elizabeth Matthews  
 Sweet May  
 T. C. McDaniel  
 Florence McKinney  
 Leighton Watkins  
 Ruth Wheatley  
 Mayme Williams  
 Maude McLaughlin  
 Elmer Menifee  
 Elizabeth Mitchell  
 Lucy Mitchell  
 Virginia Moody  
 James B. Moore  
 Tad Morgan  
 Casey Morton  
 Harold Mullens  
 Anna Mae Myers  
 Howard Noel

Gladys Norris  
 Newton Oakes  
 Lucy Onstott  
 Helena Park  
 Jane Paynter  
 Ralph D. Powers  
 Clifford Rader  
 Gertrude Raysdin  
 Ethel Reed  
 W. O. Reed  
 Myra D. Rice  
 Marion Roberts  
 Alma Sams  
 Robert Shearer  
 Opal ShROUT  
 Mae Skaggs  
 Marjorie Slem  
 Paul Smith  
 Marjorie Smith  
 Mildred Snodgrass  
 Anna Smith  
 Fannie Sparks  
 Chester Spears  
 Virginia Spillman  
 John Tarter  
 Irene Thomas  
 Mattie Tolbert  
 J. D. Turley  
 Wanda Vanhook  
 Eula Vickers  
 Gilford Walters  
 Fay White

# The MILESTONE



## Rural Life Club

### OFFICERS

#### FIRST SEMESTER

LESLIE GAY -----Pres.  
R. A. JUSTICE -----Vice-Pres.  
RUBY WATSON -----Secretary  
DELMON HOWARD-----Treasurer

#### SECOND SEMESTER

DELMON HOWARD----Pres.  
HERBERT B. LEWIS----Vice-Pres.  
RUBY WATSON -----Secretary  
ARTHUR E. EVERSOLE--Treasurer

D. THOMAS FERRELL, Sponsor

### MEMBERS

Mildred Kincaid  
Thelma Hopkins  
Eunice Watson  
Martha Lee Stevens  
Carry Lee Dunagan  
Aileen Dotson  
Elizabeth Champion  
Mildred Snodgrass  
Beulah Moore  
Geneviene Rogers  
Hattie Taylor  
Leona Destrar  
Geneva Waddle  
Lucille Cooper  
Garnice Snapp  
Bonnie Bert  
Gertrude Houston

Malinda Adams  
Inez Jordan  
Mildred Hancock  
Mauril King  
Susan Kirk  
Edna L. McHargue  
Eula Mae Ferguson  
Pauline Allred  
Marie Krueger  
Lillie V. Hoffman  
Fae Vaught  
Marie R. Combs  
Janet Dudderor  
Nannie Estridge  
Louella Houchin  
Thelma York  
Nannie Singleton

Dewie Ball  
Dolpus Cornett  
Arthur Arnett  
Arline Young  
Arnold Rose  
Jodie Smallwood  
Carl N. Smith  
Roy Hensley  
Willie Hall  
Ula Fike  
Marie Isaacs  
Maxine Cook  
Lelia Hoskins  
Thomas Eversole  
Mrs. Ann Eversole  
James Lawson  
Edythe Pyle

# The MILESTONE



## World's Affairs Club

### OFFICERS

SAM BECKLEY -----President      F. TAYLOR WHITE --Sec'y-Treas.

### SPONSORS

DR. LORRIN G. KENNAMER              MISS MARY FRANCES McKINNEY

### MEMBERS

#### ACTIVE

Carl Allen  
Jack Allen  
Bessie K. Ballinger (Mrs.)  
Vaughn Berthoff  
Mrs. Rey Stocker Brock  
Dorothy Crews  
George Dameron  
Curtis Farley  
Sarah Jane Hamblin  
Brooks Hinkle  
Robert Martin  
William Martin

Maude Ritchie McLaughlin  
Salem Moody  
Herman Moore  
Mrs. Ida Powell  
Ann Spurlin  
John Tartar  
Irene Thomas  
Bonnie Tussey  
Ruth Wheatley  
Fay White  
Frances Arline Young

#### ASSOCIATE

Mrs. Mary E. Barnhill  
Dr. Herman L. Donovan  
Mrs. Herman L. Donovan

Flemming P. Griffith  
Miss Mabel Kunkel  
Mrs. Georgiana McGlosson

# The MILESTONE



## Sigma Psi Sigma

### OFFICERS

CLIFTON DOWELL -----President

TALMADGE DE WITT -----Secretary

### FACULTY

THOS. E. McDONOUGH, Sponsor

CHAS. T. HUGHES

GERTRUDE HOOD

TOM SAMUELS

ELIZA HUGHES

ALFRED PORTWOOD

### MEMBERS

Gurney Adams

James Brown

Talmadge DeWitt

Joe Dennis

Lloyd Dykes

Irvin Eastin

Cyril Fields

Richard Greenwell

Gillis Madden

Lucy Mitchell

Michael Morris

Henry Phillips

Myra Dee Rice

Marjorie Smith

William Stevens

Clarence Sutter

# The MILESTONE



## Elementary Council

### OFFICERS

FAY WHITE .....President      BEULAH LEWIS.....Vice-President  
MARY ELIZABETH VAN BEVER, Secretary

### FACULTY SPONSORS

MRS. GLADYS PERRY TYNG      MISS MARY C. HANSEN

### MEMBERS

Harriet Allen	Ula Fike	Mollie Lutes	Mary Frances Shelton
Gertrude Angel	Beulah Gabbard	Sweet May	Charlcia Smith
Pauline Archer	R. H. Gentry	Nannie McFarland	Madge Smith
Elizabeth Baxter	Elizabeth Gragg	Dorothy Lee McKenzie	Virginia Spillman
Ida Helen Belue	Adelaide Gray	Mabel McKinney	Ann Spurlin
Sallie Brooks	Nell Hall	Estelle Miracle	Edna Stivers
Ruth Brown	Marie Harmon	Lucy Mitchell	Ruth Talbott
Stephena Brumfield	Evelyn Higginbotham	Julia L. Moneyhon	Mayme Taylor
Vivian Buckshorn	Fannie Higginbotham	Martha Nicholson	Mary Tennison
Helen Burton	Verna Hilton	Lucy Onstott	Irene Thomas
Betty Chenault	Nova Hogue	Samuel W. Patton	Ida Ueltschi
Mrs. Clark	Gladys Hollar	Chlorine Paynter	Eula Vicars
Mathalie Collins	Della Joyner	Grova Peters	Hazel Wallen
Vivian Cornette	Beatrice Kelley	Ernestine Price	Brooks Webb
Louise Conrad	Myrtle Kelly	Bernice Ramey	Ruth Wheatley
Willis E. Dillingham	Mable Kirkland	Ethel Reed	Mrs. Dorothy Williams
Mary Emerson	Louise Larkin	Edwald Roder	Jane Wintring
Geneva Ferrell	Virginia Lilly	Olive Segraves	Louise Young
Ann Fielder	Alice Lutes	Anna M. Sanders	



# HUMOR & ADS



# *The* MILESTONE

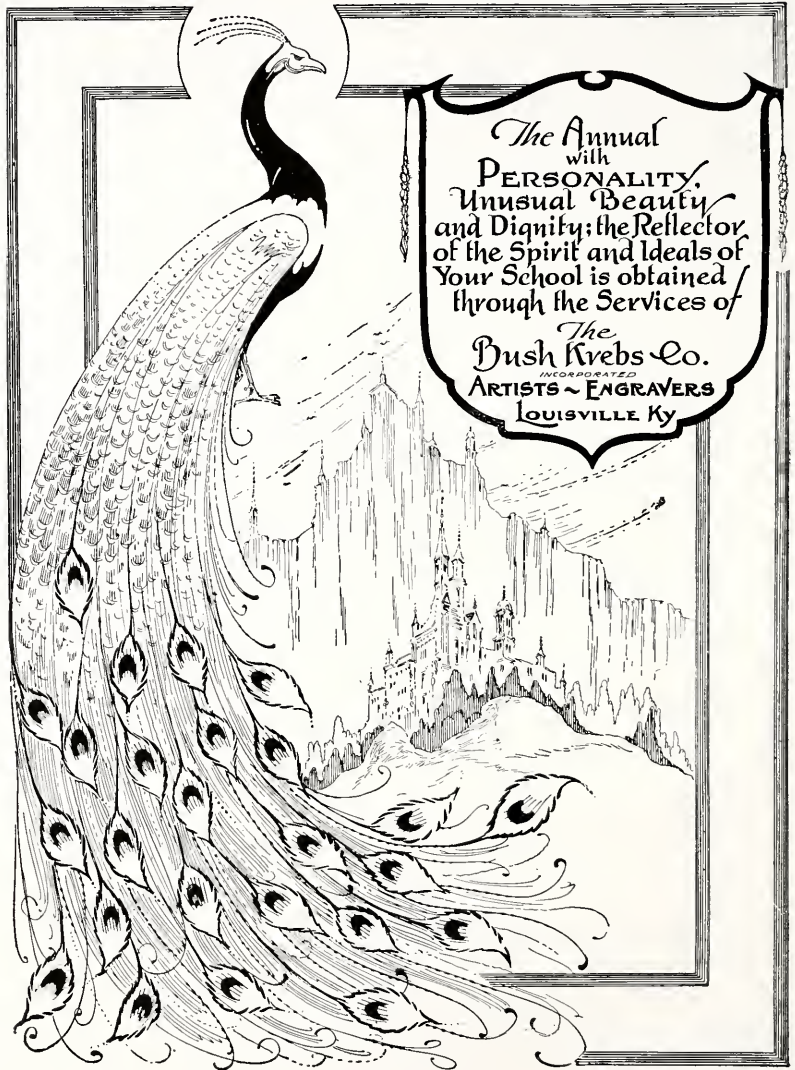
In recognition of the unselfish spirit shown by the business concerns, whose advertisements appear on the following pages; in consideration of those individuals who gave financial support in behalf of their respective classes; in appreciation of the participation of the leaders of the various student activities at Eastern, this page of the MILESTONE OF 1933 is whole-heartedly dedicated.

# *The* MILESTONE

In appreciation of service, patience,  
and quality of workmanship, we, the  
members of the Milestone Staff of  
'33, recommend to our successors

**The McGaughey Studio.**

# The MILESTONE



The Annual  
with  
**PERSONALITY.**  
Unusual Beauty  
and Dignity; the Reflector  
of the Spirit and Ideals of  
Your School is obtained  
through the Services of

The  
**Bush Krebs Co.**  
INCORPORATED  
ARTISTS ~ ENGRAVERS  
LOUISVILLE Ky

# The MILESTONE

INDIANAPOLIS

DETROIT

LOUISVILLE

## Graessle-Mercer Co.

PRINTERS and BINDERS

*Producers of*  
**HIGH GRADE ANNUALS**



HOME • OFFICE • AND • PLANT • SEYMOUR • INDIANA

# The MILESTONE

## MONTAG'S

FASHIONABLE

**WRITING PAPERS**

and

**STUDENTS' SUPPLIES**

ON SALE

AT THE BOOK ROOM

**Montag Brothers**

Incorporated

ATLANTA, GEORGIA



**COLLEGE  
CAFETERIA**

1933



Lucy Mitchell says its shows poor judgment for a girl to slap a boy who is chewing tobacco.

Visitor to Campus: "And how long have you been studying here?"  
Joe Bender: "Since the Prof. threatened to flunk me."

## State Bank and Trust Company

RICHMOND, KY.

**CAPITAL, SURPLUS AND UNDIVIDED PROFITS,**

**\$225,000.00**

R. E. TURLEY, President

A. H. DOUGLAS, Cashier

# The MILESTONE

AMERICA'S FINEST \$1.00  
SHEER CHIFFON HOSE

**ARCHER**

**OWEN McKEE**

Compliments of

**Stockton's Drug Store**

**KODAKS, DRUGS**

**and**

**SCHOOL SUPPLIES**

**RICHMOND, KENTUCKY**

Ross Anderson: "Might I have this dance?"

Myra Dee Rice: "Yes, you mite."

George Carrell: "I saw your girl today, but she didn't see me."

T. C. McDaniel: "So she told me."

Compliments of

**IDEAL CAFE**

**STRICTY HOME COOKING**

Phone 1168

Second Street

# The MILESTONE

## The College Book Store

Owned and Operated by  
the Institution

BOOKS, STATIONERY,  
PARKER and SHEAFFER  
FOUNTAIN PENS

### Official Emblem Jewelry

Special Orders made for  
Students for Articles  
Not Carried in Stock

ALWAYS  
**OUT IN FRONT**  
PULLING  
FOR  
**EASTERN**

**PERRY'S**  
Drug - Store

New York Guide: "That is a sky scrapper."  
Mrs. Barnhill: "Oh, my! I'd love to see it work."

Sam Beckley: "Why was Eve created?"  
Mary Frances Shelton: "For Adam's Express Company."

## HARCOURT & CO., Inc.

LOUISVILLE, KENTUCKY

Manufacturing

**STATIONERS**

**ENGRAVERS**

**JEWELERS**

Samples gladly sent on request.

# The MILESTONE

**E. V. ELDER**



**Department Store**  
RICHMOND, KY.

**The College Shop**  
For  
Young Women  
and  
Young Men  
**New Styles**  
in every  
Department

**New Central Cafe**

Main Street

**QUALITY AND SERVICE**  
**OUR MOTTO**

RICHMOND, KENTUCKY

Newton Oakes doesn't like to wear his new two-pants suit because he says, it makes his legs too hot.

Barber: "Shall I cut your hair close?"

Jean Hunter: "No! Stand off as far as possible. I'm engaged."

Compliments of



**WE WILL NOT BE UNDERSOLD**

**"WHERE THE SAVINGS ARE GREATEST"**

Compliments of

**MADISON THEATRE**

**STUDENTS ALWAYS WELCOME**

RICHMOND, KENTUCKY



# The MILESTONE

## Madison Quick Lunch

EVERYTHING  
GOOD TO EAT

**LOTS OF SERVICE**

Phone 752

YOU ARE ALWAYS  
WELCOME AT

## Hagan's Drug Store

**EXCLUSIVE AGENTS**

MAX FACTOR      HOLLYWOOD  
MAKE-UP SECRETS

Dr. Moore says a specialist is one who knows more and more about less and less until he knows everything about nothing.

Dr. Dorris (Looking at exam. papers): "Why the quotation marks all over the paper?"

Leslie Gay: "Courtesy to the girl on my right."

Have Your Parents  
Stop at the  
Glyndon Hotel

**Rates:**

**\$1.00 without bath**

**\$1.50 with bath**

## Glyndon Hotel

T. H. COLLINS, Mgr.

RICHMOND, KENTUCKY

**THE EARTH'S BEST  
BROUGHT TO YOUR  
DINNER TABLE!**

POULTRY

EGGS

## Robinson

## Poultry Company

RICHMOND, KENTUCKY

Phone 132

# The MILESTONE

**UNITED**  
**Department Store**

**Smart Styles**

**24 Hours From Broadway**

WE WELCOME THE  
OPPORTUNITY TO SERVE  
THE FACULTY AND  
STUDENT BODY  
OF EASTERN

**BAXTORIA CAFE**

RICHMOND, KENTUCKY

**HAVEN OF THE HUNGRY**

MEAL TICKETS—  
\$5.50 for \$4.50

Ed. Hill: "Pardon me dear, but your stockings seem rather wrinkled."  
Dorothy Tyng: "You brute! I have no stockings on."

Miss Brumfield: "My fiance wrote to say he wanted to be married to the most charming girl in the world."

Ann Spurlin: "The wretch! After promising to marry you."

**J. C. PENNEY**  
**DEPARTMENT STORES**

**OVER 1400 STORES**

STORES IN EVERY STATE. THE FARTHER YOU GET  
FROM ONE, THE CLOSER YOU GET TO ANOTHER.

**"TESTED QUALITY AND VALUE"**

# The MILESTONE

## Bryant-Hunt Co Inc.

LEXINGTON, KY.

We carry a full line of staple  
and fancy groceries

Also a

Large stock of No. 10 and  
gallon goods both fruits and  
vegetables for institutions, and  
respectfully solicit any busi-  
ness that you can give us.

## MARCUM'S

POOL HALL

F. S. MARCUM, Prop.

Clean Recreation Under  
Favorable Conditions

### Refreshments

Main - Street

RICHMOND, KENTUCKY

Charlie Howe: "May I hold your hand?"  
Iva Egner: "Well, I suppose we will have to start with the preliminaries."

Herman Moore: "For the last time I ask you for that fifty cents  
you owe me."

Taylor White: "Thank Goodness that is over with."

## Richmond Fruit Co.

WHOLESALE

**FRESH FRUITS**  
and  
**VEGETABLES**

Phone 99

U. S. Government Inspected

HAM

LARD



BACON

SAUSAGE

Since 1876

**FINEST QUALITY**

**The H. H. Meyer**  
**Packing Company**

CINCINNATI

:

OHIO

# The MILESTONE

## **Burnam & Harber**

**"The First Floor Insurance  
Agency"**

McKee Building

RICHMOND, KENTUCKY

Phone 186

**Sam P. Burnam**

W. OVERTON HARBER

Compliments

**F. W. Woolworth Co.**

**5 & 10c STORE**

SPECIALTIES

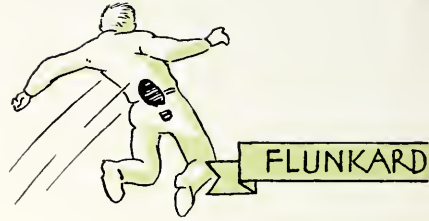
RICHMOND, KENTUCKY

Vaughn Berthoff: "Oh heck! I wonder what is knocking in that motor."  
Hester Froge: "I think it's opportunity, honey."

Dr. Schneib: "Where did those curious rocks come from?"  
Dr. Kenamer: "The glaciers brought them down."  
Dr. Schneib: "But where are the glaciers?"  
Dr. Kenamer: "They have gone back after more rock."

## **Madison-Southern National Bank & Trust Co.**

RICHMOND, KENTUCKY



*The* END

rolf









