

5-1-1936

Milestone - 1936

Eastern Kentucky State Teachers College

Follow this and additional works at: <http://encompass.eku.edu/yearbooks>

Recommended Citation

Eastern Kentucky State Teachers College, "Milestone - 1936" (1936). *Yearbooks*. Book 15.
<http://encompass.eku.edu/yearbooks/15>

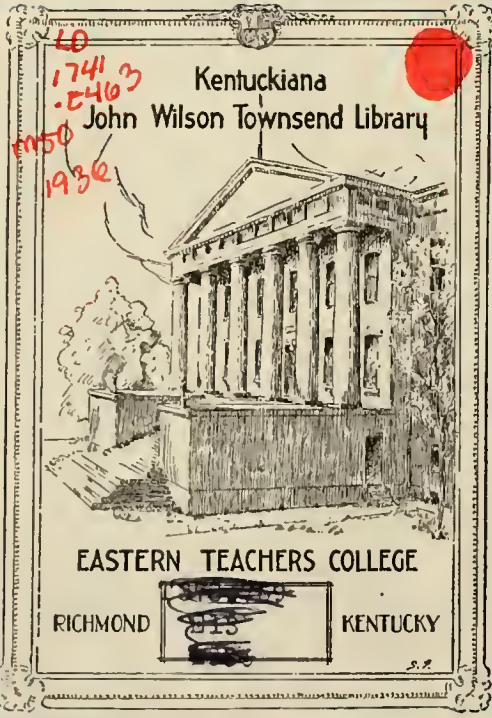
This Article is brought to you for free and open access by the University Publications at Encompass. It has been accepted for inclusion in Yearbooks by an authorized administrator of Encompass. For more information, please contact Linda.Sizemore@eku.edu.

"36"



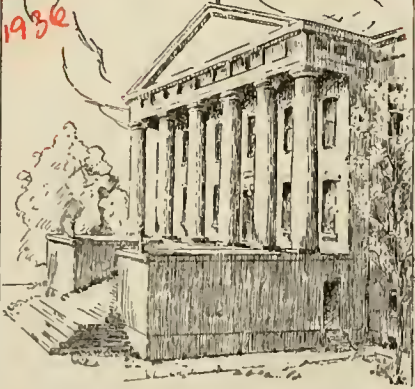
MILESTONE





LD
1741
5463
1950
1936

Kentuckiana
John Wilson Townsend Library



EASTERN TEACHERS COLLEGE

RICHMOND 1913 KENTUCKY

The Kentucky Room

EX LIBRIS





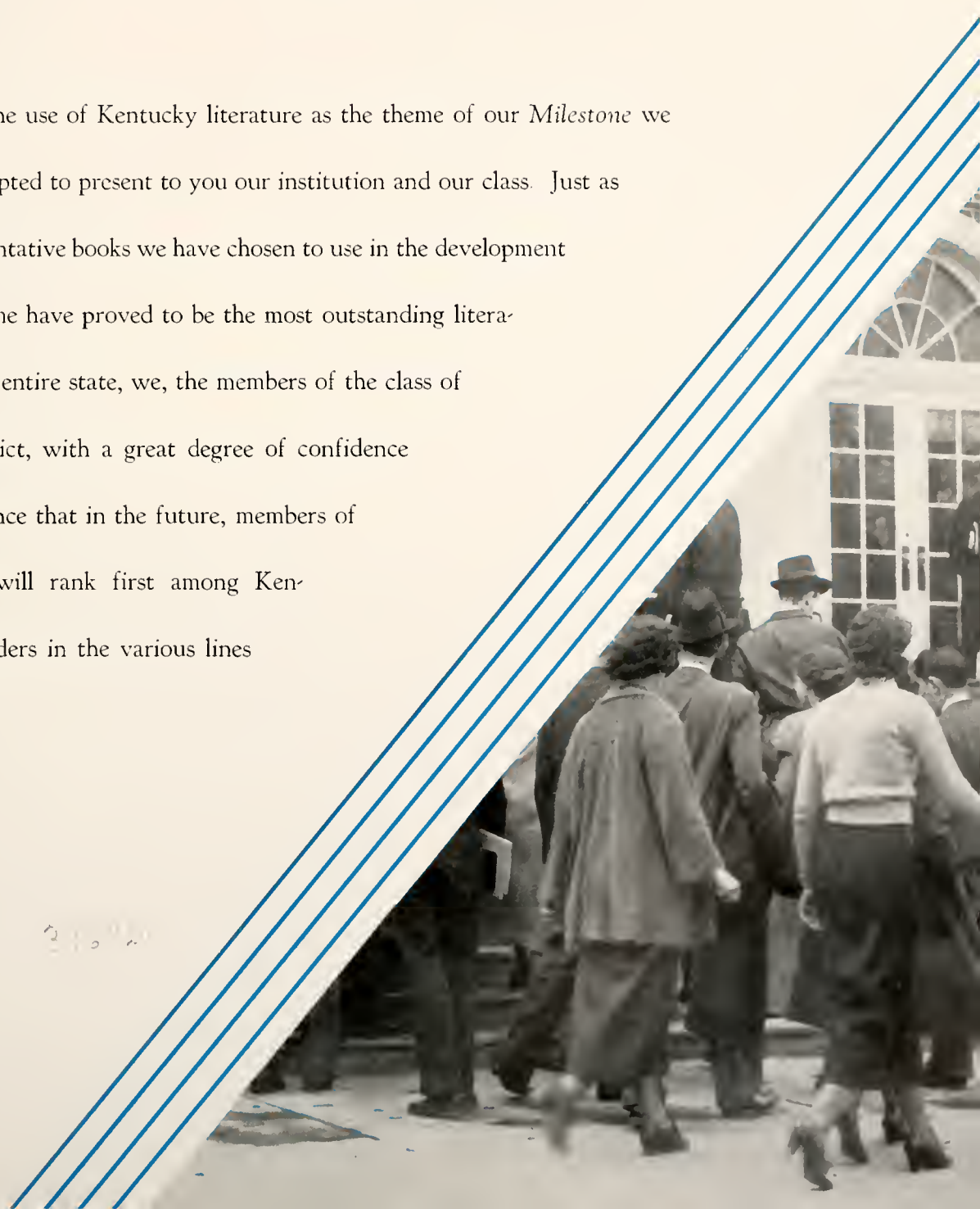
THE "36"

PUBLISHED BY
THE SENIOR CLASS
OF EASTERN KENTUCKY
STATE TEACHERS COLLEGE
RICHMOND, KENTUCKY

Townsend
LD1741
E463
M55
1936

MILESTONE

Through the use of Kentucky literature as the theme of our *Milestone* we have attempted to present to you our institution and our class. Just as the representative books we have chosen to use in the development of our theme have proved to be the most outstanding literature in the entire state, we, the members of the class of 1936, predict, with a great degree of confidence and assurance that in the future, members of our class will rank first among Kentucky's leaders in the various lines of activity.



DEDICATION

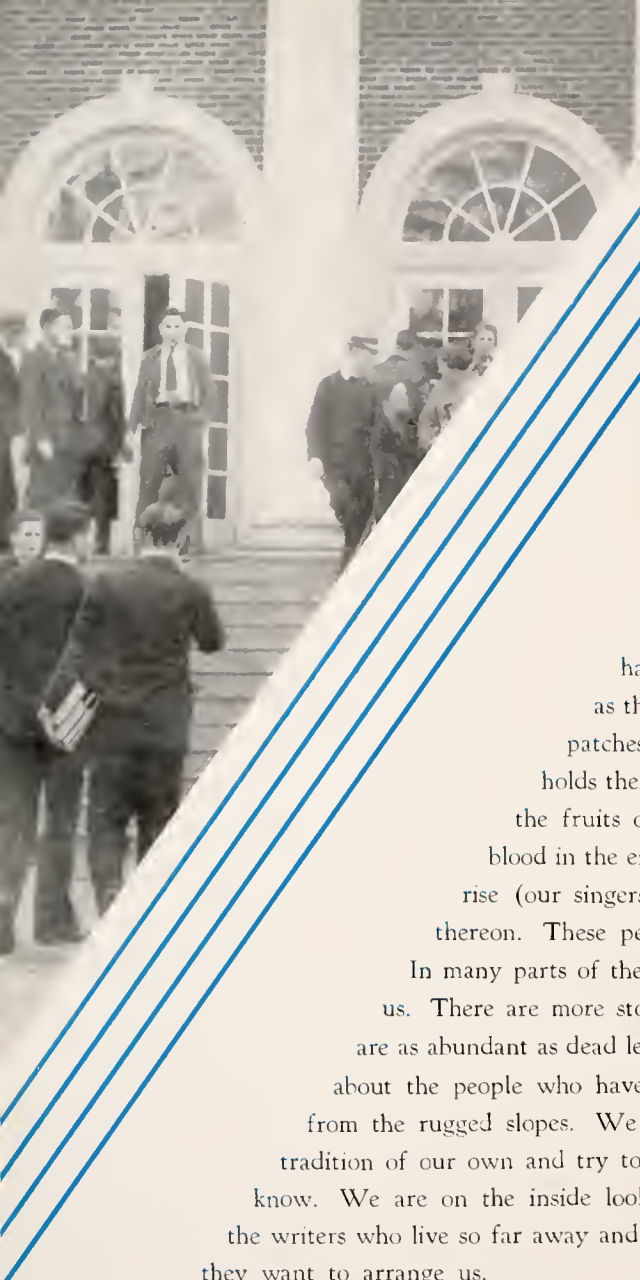


To JACOB D. FARRIS, A. M., A. B., M. D.

We, the members of the *SENIOR CLASS* of Eastern Kentucky State Teachers College, dedicate this issue of the *MILESTONE* with deep gratitude and sincere admiration for his faithful work as guardian of our physical

well-being; for
his untiring
efforts to establish
within us
a sense of the
aesthetic.



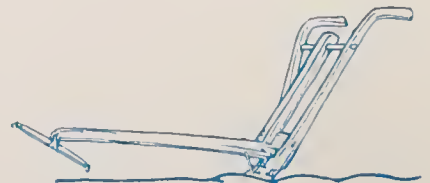


THE

There is not a section of local color in America more colorful than the local color about us in the hills of eastern Kentucky. Our people have lived before us (our native blood) for centuries. They have wrestled with the rocks and the thin earth to make a meager living, but they have found enough to eat. They have owned their brains. They have been a free people—free as the wind that blows through the sawbriars and across the corn patches. The earth that fed our native kin through life, usually holds them in death. Our people are born of mountain clay, live from the fruits of mountain clay, and the mountain clay drinks back their blood in the end. We belong to our mountain earth. Therefore, we should rise (our singers should) and sing of our mountain earth and its contents thereon. These people, our people, have a tradition of stories behind them. In many parts of the hills, and the hollows, we are still leaving tradition behind us. There are more stories and poems among us than we can ever write. Stories are as abundant as dead leaves on the trees in autumn. They are *our* stories. They are about the people who have lived among these hills and earned a meager daily bread from the rugged slopes. We should write them. We do not have the right to pass a tradition of our own and try to write things we have not lived and things we do not know. We are on the inside looking out. We have a better outlook on our own people than the writers who live so far away and come to our hill country to catch the pictures of us anyway they want to arrange us.

It is my honest belief that there is enough fiction in the hills of eastern Kentucky for a Sir Walter Scott to write; enough poetry for a century of poets (they cannot get through singing of a land filled with story and song as beautiful as eastern Kentucky is); enough legend, folk-lore, and fairy tales for a William Butler Yeats to write. This patch of mountain local color seems, to me, similar to Scotland for its

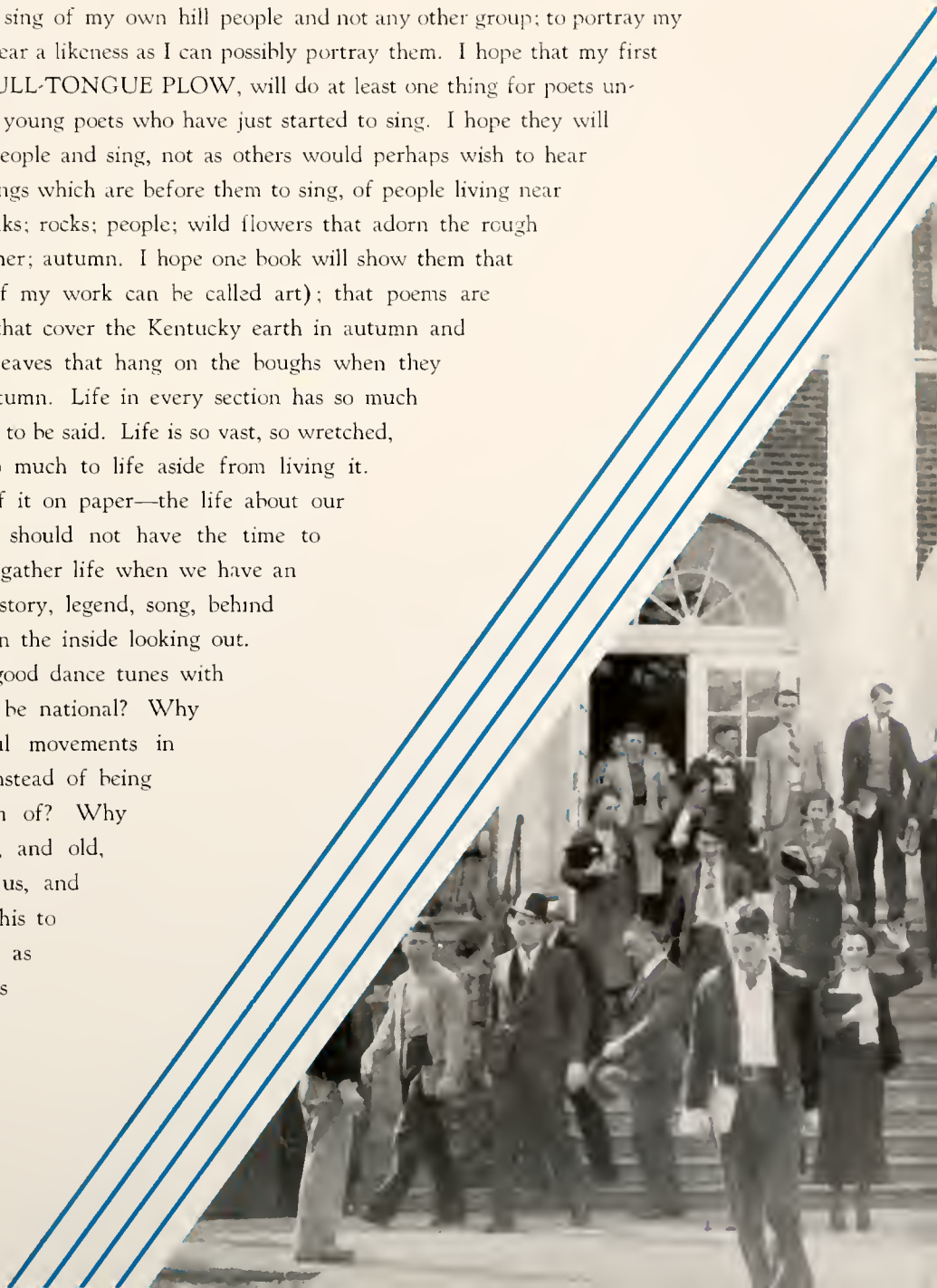
By
Jesse Stuart



INTRODUCTION

clannish fighting people, for its love of swift dance music and love of song. And for my life, I cannot look upon Kentucky mountains as only a source of illegitimate news. I look upon these hills as one section of America that has not lost its local color, yet.

My ambition has been to sing of my own hill people and not any other group; to portray my people in my songs to as near a likeness as I can possibly portray them. I hope that my first book, *MAN WITH A BULL-TONGUE PLOW*, will do at least one thing for poets unborn among the hills, and young poets who have just started to sing. I hope they will remain among our own people and sing, not as others would perhaps wish to hear them sing, but sing the songs which are before them to sing, of people living near the earth; of mountain oaks; rocks; people; wild flowers that adorn the rough slopes in the spring; summer; autumn. I hope one book will show them that art is about their feet (if my work can be called art); that poems are thicker than dead leaves that cover the Kentucky earth in autumn and that stories are thick as leaves that hang on the boughs when they first start coloring in Autumn. Life in every section has so much to be written and so much to be said. Life is so vast, so wretched, so beautiful. There is so much to life aside from living it. We should put a little of it on paper—the life about our own high country. We should not have the time to traipse here and there to gather life when we have an unsurpassed tradition of story, legend, song, behind us; when we are living on the inside looking out. Why can't some of our good dance tunes with the swift music in them be national? Why can't the pretty graceful movements in them be made national instead of being butchered and made fun of? Why can't youth, middle-aged, and old, write our stories, about us, and sing our songs? I leave this to you. Why do we not as native hill Kentuckians start a tradition of writing to be handed down through generations?





THE

In Memoriam

MARY L. SULLIVAN
LUCILLE SHOUSE

CONTENTS

CAMPUS

THE COLLEGE

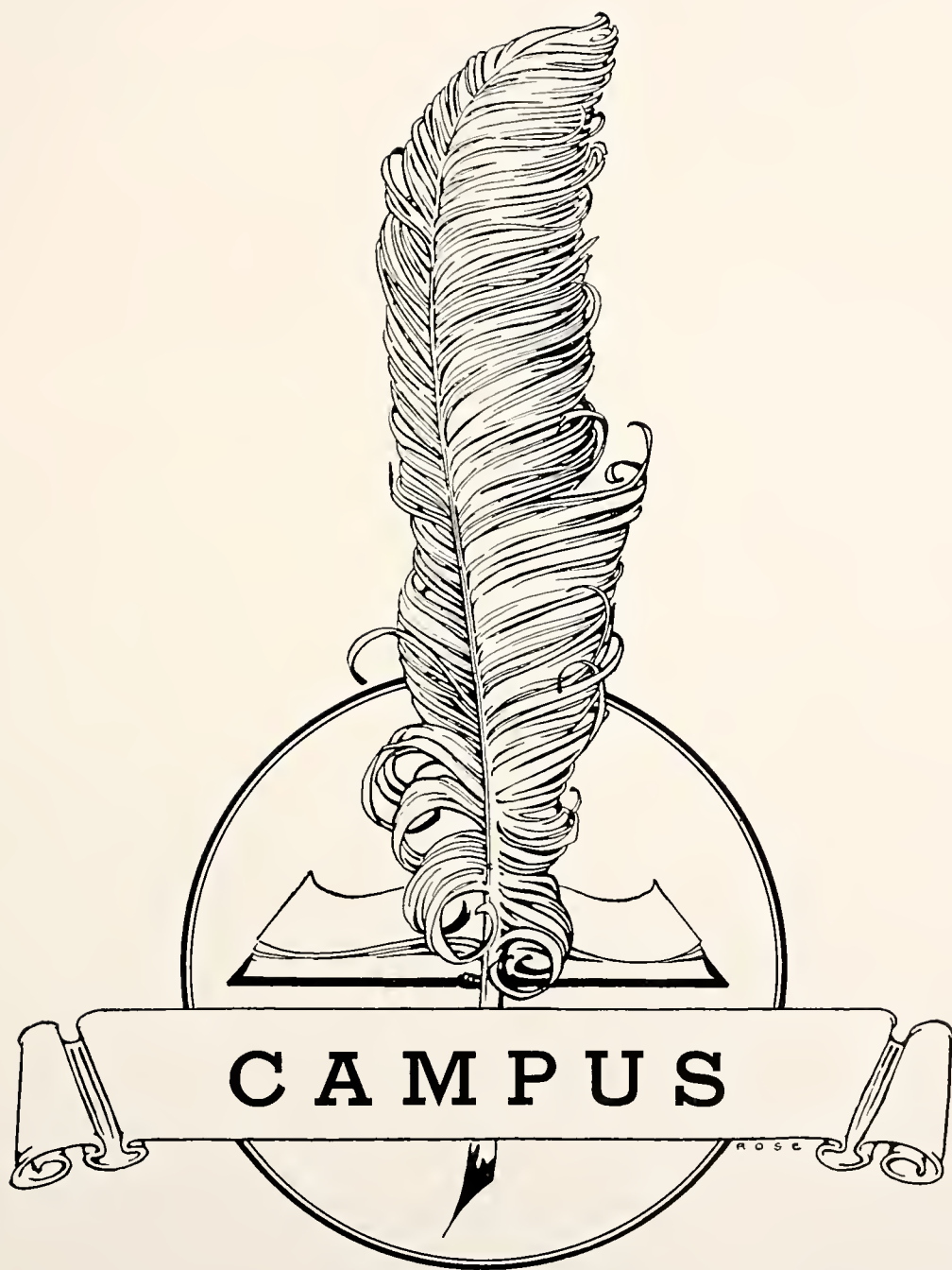
THE CLASSES

FEATURES

ATHLETICS

ORGANIZATIONS

ADVERTISING



THE TRAIL OF THE LONESOME PINE



To you, my unknown friends, I bring a greeting from the hilltop and the tall pines singing in the wind. I bring a greeting from the earth, for I am a part of it all, the green, the red, the brown, and the blue.

Come sit with me on a mossy ledge and learn of the truth from earth's psalmists. Great teachers are they, the hills and the pine trees. Forever unchanging and silent stand the hills while on their bosom the sturdy pine murmurs always of patient endurance. Can you not get from them the secret of bearing your sorrow? Or having no sorrow to bear, you may learn from them silent rejoicing and the shining pathway of peace. Have you hopes and dreams and aspirations? Know you then the solemn height of the mountain is nearest to the silent stars.





On the Campus



The Administration Building



Leach Building



Crabbe Library



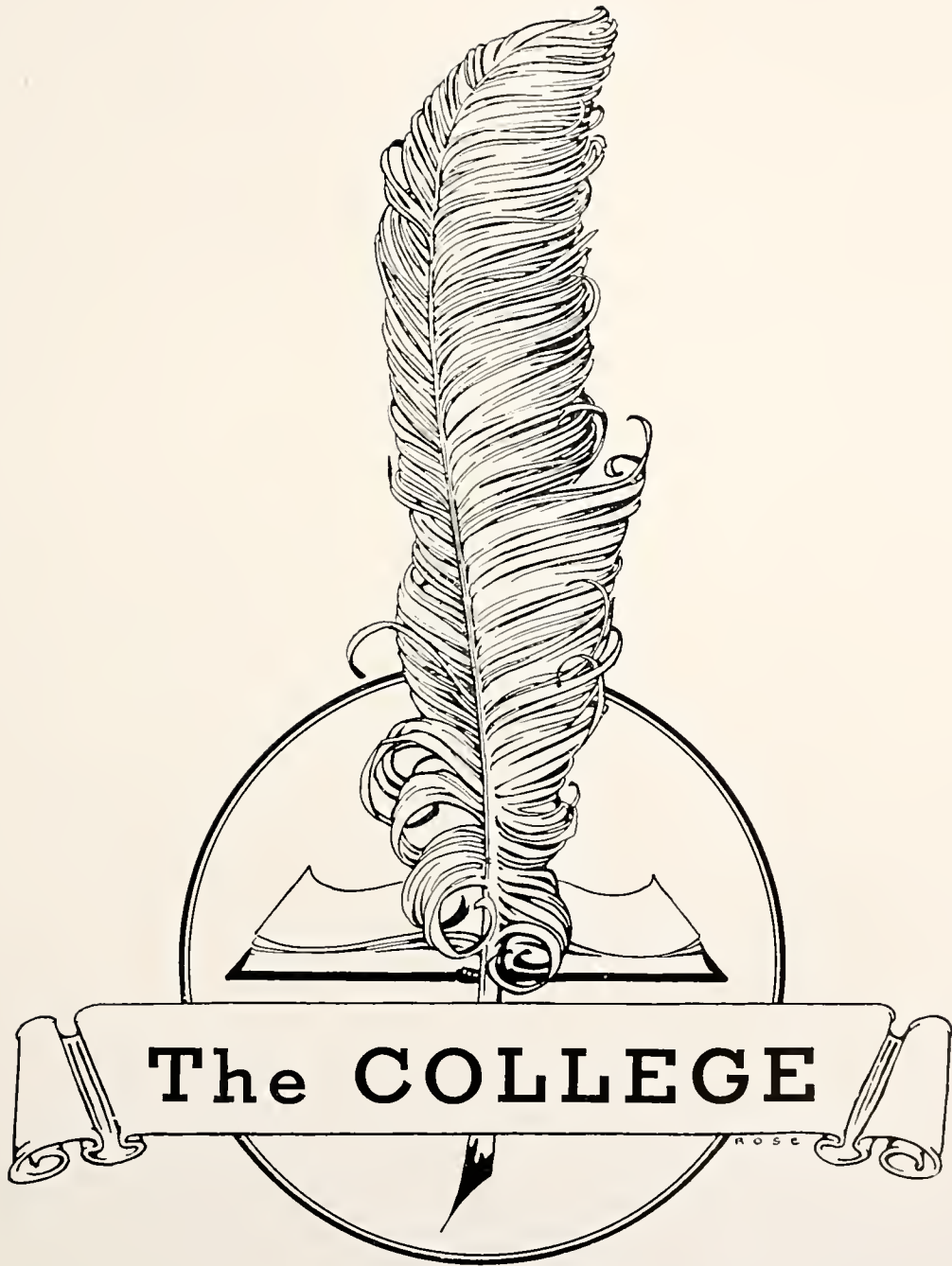
University Building



Burnham Hall



Weaver Health Building



THE BULL-TONGUE PLOW







HARRY W. PETERS
Superintendent of Public Instruction



H. L. DONOVAN, A.B., A.M., Ph.D., LL.D.

We, the members of the Senior Class, wish to take this means of offering our President a token of our sincere respect and admiration for his untiring efforts toward the betterment of Eastern, and for his kindly counsel, ever ready sympathy, and wise leadership through our college days. As we are proud of our President, may we not betray his faith in us.



SOCIAL SCIENCES

VIRGIL BURNS
A. B., M. A.
History and Government

L. G. KENNAMER
A. B., B. S., M. A., Ph. D.
Geography and Geology

CHARLES A. KEITH
B. A., M. A., Ped. D.
History and Dean of Men

J. T. DORRIS
A. B., A. M., Ph. D.
History and Government

KERNEY M. ADAMS
A. B., A. M.
History

WILLIAM J. MOORE
A. B., A. M., Ph. D.
Commerce

MARY FRANCES MCKINNEY
B. S., M. A.
Geography





FINE ARTS

ELEANOR MEBANE
A. B., M. A.
Art

JANE CAMPBELL
B. Mus., A. B., A. M.
Music

BROWN TELFORD
B. S.
Music

THOMAS STONE
B. Mus.
Music

MRS. HELEN HULL LUTES
B. Mus.
Music

ALLIE FOWLER
B. S., M. A.
Art

JAMES E. VAN PEURSEM
A. B., B. Mus.
Music

MAUDE GIBSON
Art

MARY CATHERINE MURPHY
A. B., M. M.
Music





BIOLOGICAL and PHYSICAL SCIENCES

TOM C. SAMUELS
Ph. C., B. S.
Line Coach

HARRIETTE V. KRICK
A. B., Ph. D.
Biology

MEREDITH J. COX
B. S., M. A.
Chemistry

ARNIM DEAN HUMMELL
B. S., M. S., Ph. D.
Physics

THOMAS C. HERNDON
B. S., M. A., Ph. D.
Chemistry

DEAN W. RUMBOLD
B. S., Ph. D.
Biology





APPLIED ARTS

N. G. DENISTON
B. M. T., B. S., M. S.
Industrial Arts

EDITH G. GORD
B. C. S., A. B., A. M.
Commerce

ASHBY B. CARTER
B. S., M. A.
Agriculture

RUTH DIX
B. S., M. A.
Home Economics

MARY KING BURRIER
B. S., M. S.
Home Economics

G. M. GUMBERT
B. S., M. S.
Agriculture

ANNA D. GILL
B. C. S., A. B., M. A.
Commerce

R. R. RICHARDS
A. B., M. B. A.
Commerce





MATHEMATICS

LUCILE DERRICK
B. S., M. A.
Mathematics

FRED A. ENGLE
A.B., A. M.
Mathematics

SMITH PARK
B. S., M. S., Ph. D.
Mathematics

C. E. CALDWELL
A. B., B. S., A. M.
Mathematics





EDUCATION

RICHARD A. EDWARDS
A. B., A. M.
Director of Training School

MRS. EMMA YOUNG CASE
A. B., M. A.
Dean of Women

WILLIAM C. JONES
B. S., A. M., Ph. D.
Dean

ANNA A. SCHNIEB
A. B., A. M., Ph. D.
Education

W. F. O'DONNELL
A. B., M. A.
Supervisor of Student
Teaching, City Schools

MRS. JULIAN TYNG
B. S., M. A.
Education

NOEL B. CUFF
B. S., A. M., Ph. D.
Psychology

MELVIN E. MATTON
B. S., M. A.
Registrar

D. THOMAS FERRELL
A. B., M. A.
Education

MAY C. HANSEN
B. S., M. A.
Education





LANGUAGES

WILLIAM L. KEENE
B. S., M. A.
English

MRS. JANET MURBACH
A. B., A. M.
French

ROY B. CLARK
A. B., A. M., Ph. D.
English

PEARL L. BUCHANAN
A. B., M. A.
English—Speech

SAUL HOUNCHELL
A. B., M. A., Ph. D.
English

MRS. MARY EDMUNDS BARNHILL
A. B., M. A., LL. B.
English





HEALTH and PHYSICAL EDUCATION

THOMAS E. McDONOUGH
B. S., M. A.
Health and Physical Education

ELIZA HUGHES
B. S., A. M.
Health and Physical Education

CHARLES T. HUGHES
A. B., M. A.
Physical Education

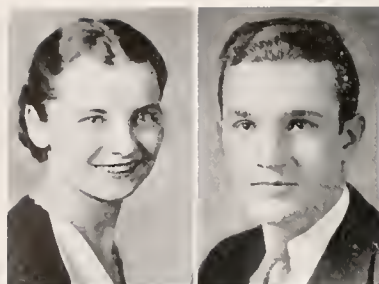
JACOB D. FARRIS
A. M., M. D.
College Physician

GERTRUDE M. HOOD
A. B., A. M.
Health and Physical Education

GENEVIEVE WOODARD
College Nurse

GEORGE N. HEMBREE
B. C. S., A. B., M. A.
Physical Education





GLADYS KARRICK
B. S.
Cashier

SAM BECKLEY
B. A.
Assistant Director
of Extension



FRED BALLOU
Book Store Clerk

MARTHA J. CULTON
A. B.
Secretary to Registrar

MRS. HELEN W. PERRY
Recorder,
Registrar's Office



KATHERINE MORGAN
Secretary to President

G. M. BROCK
Business Agent

EUNICE WINGO
Secretary to Dean of
Women



MAYE M. WALTZ
Secretary to Dean

W. A. AULT
Superintendent Buildings
and Grounds

LUCY MITCHELL
B. S.
Stenographer, Business
Office



MRS. ELMER BLAIR
Assistant Bookkeeper and
Stenographer

LOIS COLLEY
Secretary to Business
Agent

MAYME COOPER
Secretary to Director
of Extension



E. P. McCONNELL
Bookkeeper

LILLY ELNORA KOHL
B. S., M. S.
Supervisor of Cafeteria

BESSIE H. GRIGGS
Information Clerk

ADMINISTRATIVE STAFF

TRAINING SCHOOL

MARY L. ADAMS
B. S., M. A.
Home Economics

SAMUEL WALKER
A. B., A. M.
History

VIRGINIA F. STORY
B. S., M. A.
Elementary Education

ANNA WILLIAMS
A. B.
Nursery School

ELLEN PUGH
A. B., M. A.
Elementary Education

MARGARET LINGENFELSER
A. B., M. A.
Elementary Education

ELIZABETH WILSON
B. S., M. A.
Elementary Education

ELIZA M. HANSON
A. B., M. A.
Critic, History

P. M. GRISE
A. B., M. A.
Critic, English

GERMANIA J. WINGO
B. S., M. A.
Critic, Fourth Grade

J. DORLAND COATES
B. S., M. A.
Principal, High School

ANNIE ALVIS
A. B., M. A.
Critic, Sixth Grade

CORA LEE
B. S., M. A.
Critic, English

KATIE CARPENTER
A. B., A. M.
Rural Practice School

RUBY RUSH
A. B., A. M.
Latin

G. O. BRYANT
A. B., A. M.
Critic, Mathematics





LIBRARY STAFF



LUCILE WHITEHEAD
B. S.
Reference Librarian



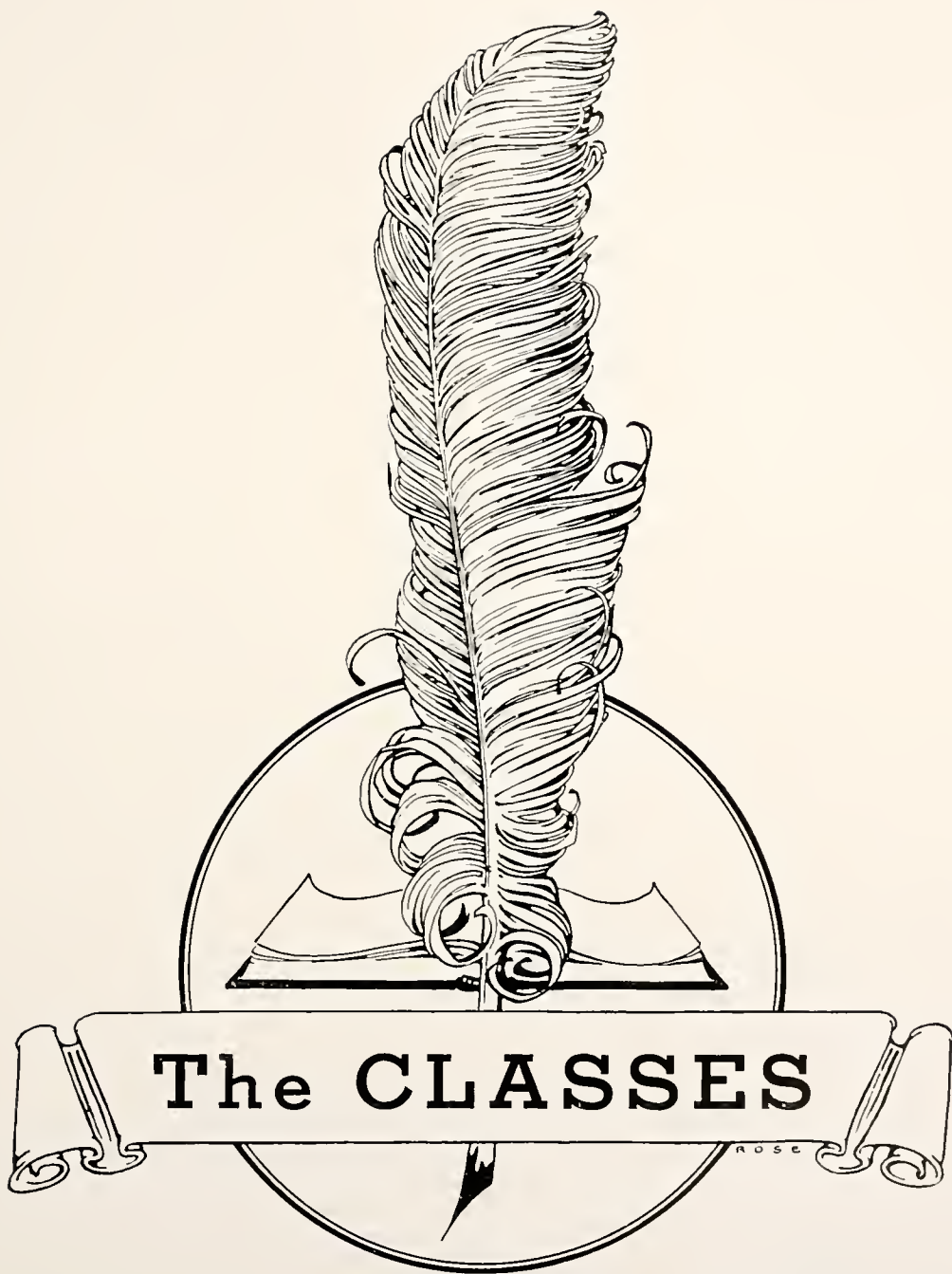
FRANCES MASON
A. B. in Lib. S.
Training School Librarian



MARY FLOYD
A. B., M. A., B. S.
Head Librarian



ISABEL BENNETT
A. B., B. S.
Circulation Librarian



Mrs. Wiggs of the Cabbage Patch



Don't you want to hear a story of the times of long ago,

Don't you want to go a strolling when the summer winds moan low?

Don't you want to go a walking down an age-old lane?

Many are the flowers that bloom at the journey's end.

Dear is the one you'll find awaiting you, my friend.
Just a little lady in an odd gray dress,

Doing fancy quiltwork while she entertains her guest.

Just a little lady with a heart of gold
Filled and overflowing with more love than it can hold.

Just a strange old woman telling strange old dreams
Which your fancy follows in the firelight's flickering beams.



ROSS 1/26





ELIZABETH MCILVAINE
Treasurer

MRS. BARNHILL
Faculty Advisor

FRANCES HANNA
Secretary

THOMAS FARRIS
Vice-President

DAILY R. TURNER
President

SENIOR CLASS

As we turn and look backward for a last final survey, we are impressed with the marked similarity between the theme of our Milestone and the make-up of our Senior class. The great differences and wide variations found in the character and personality of the members of our class may be likened to the great differences and the varied conditions found within the regions of our state. Just as we find different yet vital characteristics within each regional division of Kentucky, so it is within our class.

The stern rugged steadfastness of the solemn never-changing mountains and foothills may be aptly compared to that unconquerable courageous spirit already shown by many outstanding leaders in our group. The delightful cultural atmosphere of the far-famed bluegrass region may be compared with that finer intangible yet very vital something we have gained from close contact and association with the finer and more noble things of life. And so we continue drawing comparisons with each section of our state. Just as it has required all of these separate and distinct regions, each with its own peculiar characteristics and traits, to make up one of the nation's finest states, so we have taken all our different types and qualities to make up what we hope is Eastern's finest graduating class.



MELVA WALKER

Bellevue, Kentucky

B. S.—Physical Education & Commerce

Physical Education Club; Kappa Delta Pi; Northern Kentucky Club.

MATTIE LOU MCKINNEY

Bedford, Kentucky

B. S.—Elementary Education

Elementary Council; Y. W. C. A.; Student Dormitory Council.

FARRIS LONG

Maryville, Tennessee

A. B.—Physical Education & History

Football '35, '36; Physical Education Club.

DELBERT PARTIN

Campbellsburg, Kentucky

B. S.—Education

Y. M. C. A.; Baptist Student Council, Pres. '35, '36.

DAILY R. TURNER

Morris Fork, Kentucky

A. B.—Social Science

World Affairs Club, Pres. '36; Kappa Delta Pi, Pres. '35, '36; Social Science Club, 2nd Vice-Pres. '34, '35; Canterbury Club; Y. M. C. A.; Pres. Senior Class '36; Glee Club '35.

MRS. ALZADA THOMPSON JENNINGS

Carlisle, Kentucky

B. S.—Education

Social Science Club; Y. W. C. A.; Elementary Council.

LOUISE HUGHES

Richmond, Kentucky

A. B.—Music

Madrigal Club.

FRANCES HANNA

Shelbyville, Kentucky

A. B.—Commerce

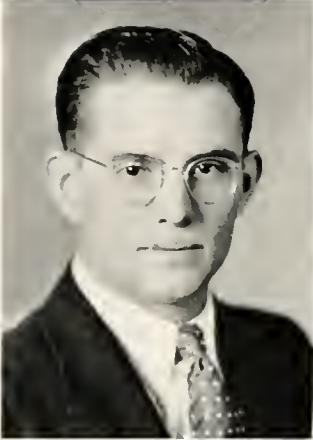
Sec. of Freshman Class '32; Sigma Tau Pi '33, Vice-Pres. '34, Sec. '35; Little Theatre Club; Madrigal Club '32, '33; Sec. Junior Class '34; Sec. Senior Class '36; Dormitory Student Council '33.

HOWARD STAMPER

Waynesburg, Kentucky

B. S.—Agriculture

Baptist Student Union; Y. M. C. A.; Agriculture Forum; Progress Staff; Cafeteria Workers Club.





MARY OLIVE TERRY
Ravenna, Kentucky
B. S.—*Education*

JULIA WILLIAMS
Owenton, Kentucky
A. B.—*Commerce & History*
Social Science Club.

KEITH ORTON DICKEN
California, Kentucky
A. B.—*English & History*
Editor Milestone; Y. M. C. A. Cabinet; World Affairs Club; Canterbury Club; Social Science Club; Kappa Delta Pi; Northern Kentucky Club.

O. Y. STEWART
Maysville, Kentucky
B. S.—*Commerce & Social Science*
Sigma Tau Pi; Social Science Club, Vice-Pres.; Y. M. C. A.; Milestone Staff.

WILLIAM MASON STEWART
Maysville, Kentucky
B. S.—*Mathematics*

LUCILLE BOND
Meta, Kentucky
A. B.—*History*

BESSIE BAUMGARDNER
Middlesboro, Kentucky
B. S.—*Elementary Education*
Little Theatre Club '35, '36; Glee Club '32, '33, '34; Sec. of Glee Club '34; Band Sponser '34, '35; Attendant to Miss Eastern '34, '35; Attendant to Prom Queen '35.

KATHERINE CARRELL
Louisville, Kentucky
B. S.—*Primary Education*
Band; Chorus; Graduate of Louisville Normal School.

GEORGE CARRELL
Louisville, Kentucky
B. S.—*Biology*
Business Manager of Milestone '35, '36; Treasurer of Sophomore Class '32, '33; Pres. of Men's Dormitory Council '33, '34; Cafeteria Cashier '31-'32, '32-'33, '33-'34; Member of Sigma Tau Pi; Vice-Pres. Y. M. C. A.; Treasurer Y. M. C. A. '33, '34; Social Committee '32, '33; Assistant Business Manager Milestone '33.





GLENN A. BEGLEY
Middlesboro, Kentucky
B. S.—Commerce

Attendant to Miss Eastern '35, '36; Sigma Tau Pi;
Little Theatre Club.

MARY EDITH ADAMS
Richmond, Kentucky
B. S.—Mathematics

FLOYD CAMMACK
Owenton, Kentucky
A. B.—History & Geography
Social Science Club; World Affairs Club.

JAMES H. DRAKE
Louisville, Kentucky
A. B.—History
Y. M. C. A. '32, '33, Cabinet '34, '35, '36, Sec. '34;
Social Science Club '32, '33, '34, '35, '36; World
Affairs Club '32, '33, '34, '35, '36; Sigma Tau Pi
'35, '36; Delta Alpha Chapter; Kappa Delta Pi '35,
'36; Library Staff '32, '33, '34, '35, '36.

EVERETT SNIDER
Taylorsville, Kentucky
B. S.—Mathematics

ROSA ELLEN YATES
Young's Creek, Kentucky
B. S.—Chemistry & Mathematics
Dramatic Club; Science Club; Sec. Treas. '35-'36.

JUNE M. REDDING
Georgetown, Kentucky
B. S.—Home Economics
Home Economics Club '34, '36; Baptist Student
Council.

RUBY PEARL REAMS
Langnau, Kentucky
B. S.—Mathematics
Baptist Student Union; Canterbury Club.

WILLIAM McCONNELL
Mount Olivet, Kentucky
B. S.—Biology & Chemistry
Basketball; Track; Baseball; French Club; (Univ.
Cinn.); Caduceus Club, Vice-Pres.





RUTH GERMAN
Bellevue, Kentucky

B. S.—Primary Education

Elementary Council '32-'36, Vice-Pres. '35, Pres. '36; Y. W. C. A. Cabinet '32-'36; Northern Kentucky Club '32-'36; Senior Class Reporter '36.

KATHRYN WILKINS
Covington, Kentucky

B. S.—Elementary Education

Glee Club; Progress Staff; Elementary Council; Sec. Dormitory Council '34, '35; Burnman Hall Administrative Staff; Literary Editor Milestone; Northern Kentucky Club.

JAMES PRESTON SHORT
Middleburg, Kentucky

A. B.—History

Social Science Club '33; Elementary Council '34; Baseball '33, '34, '35; "E" Club '34.

JOHN SHEARER
Monticello, Kentucky

B. S.—Biology

Sigma Tau Pi; Science Club.

ROBERT LEWIS TERRILL
Richmond, Kentucky

B. S.—Chemistry & Mathematics

Little Theatre Club '33, '35, '36, Pres. '33, '34; Pi Beta Gamma (Science) Pres. '35, '36; Football '32, '33; Chemistry Laboratory Assistant '33, '34, '35, '36; Milestone Staff '35, '36.

EVELYN WELLS NEWELL
Covington, Kentucky

B. S.—Elementary Education

Art Club '31, '32, '33, '36; Elementary Council '31, '32, '36; Alpha Zeta Kappa '36; University of Cincinnati '35; Peabody College, Summer '35.

MRS. RENA ALLEY STEWART
Beattyville, Kentucky

B. S.—Home Economics

Home Economics Club Pres. '35, '36; Y. W. C. A.

KATHERINE PRATHER
Owenton, Kentucky

A. B.—Music

Y. W. C. A. '34; Director of Model High Glee Club '34; Madrigal Club; N. C. K. Club.

MARION BERSOT
Ghent, Kentucky

B. S.—Mathematics and Social Science

Social Science Club '35, '36; Milestone Staff '35, '36; Y. M. C. A.; N. C. K. Club.





RUTH MARIE HERRELL
Middlesborough, Kentucky

A. B.—English & History

Art Club; Upper Cumberland Club; Social Science Club; Canterbury Club; French Club; Y. W. C. A. '32, '36, Vice President '33, '34; Chairman of Dormitory Student Council '35, '36.

EUNICE WINN
Irvine, Kentucky

B. S.—Elementary Education

THOMAS MURRELL LUDWICK
Jeffersontown, Kentucky

B. S.—Mathematics & Geography

Canterbury Club '34, '35; Y. M. C. A. '35, '36, Cabinet; World Affairs Club Vice-Pres. '35, '36.

WILLIAM A. RICHARDS
Russell Springs, Kentucky

A. B.—Commerce

Glee Club; Physical Education Club; Y. M. C. A.; Basketball '30; Football '29, '30, '31; Track; Sigma Tau Pi; Sigma Si Sigma; Student Instructor; President Pulaski County Club; Social Science Club; Correspondent, American Penman Magazine.

ROY PILLE
Dayton, Kentucky

B. S.—Physical Education

Basketball '32; Football '33, '34, '35; "E" Club Sec. '34; Sigma Si Sigma; Track '33, '34; Northern Kentucky Club; Caduceus Club.

RUBY GOLDEN HAMM
Bryantsville, Kentucky

B. S.—Mathematics

Y. W. C. A.; Science Club; Canterbury Club.

XIE MAE SKAGGS
Chillicothe, Ohio

B. S.—Mathematics and History

Social Science Club; Canterbury Club; Vice-President '34-'35.

MILDRED HANCOCK
Owenton, Kentucky

B. S.—Elementary Education

B. S. U. Council; Little Theatre Club; Social Science Club; Elementary Council; Pres. Dormitory Council '34, '35.

CURTIS McDANIEL
Oakley, Kentucky

B. S.—Commerce

Upper Cumberland Club.





MABEL FLEMING

Etty, Kentucky

A. B.—*History & English*

Alpha Beta Sigma '31, '32; German Club, Pikeville College; Social Science Club; Y. W. C. A.; Council.

VIRGINIA LONG

Irvine, Kentucky

B. S.—*Commerce*

CHARLES ALLPHIN

Crittendon, Kentucky

A. B.—*History*

Baseball

JAMES PORTER WALKER

Townsend, Tennessee

A. B.—*Physical Education*

Physical Education Club '34, '35, '36; Football '34,

JOHNNY E. GAMBILL

Datha, Kentucky

B. S.—*Agriculture*

Y. M. C. A.; Agriculture Forum; Science Club

ELIZABETH MCILVAINE

Richmond, Kentucky

B. S.—*Commerce*

Little Theatre Club, Treasurer '34, '35, Vice President '35, '36; Sigma Tau Pi; Usher Staff.

ELLA RAY HASTIE

Mt. Sterling, Kentucky

B. S.—*Commerce*

Pi Omega Pi, President '36; Sigma Tau Pi, Treasurer '35; Social Science Club; Milestone Typist; Y. W. C. A.; Library Staff.

GOLDIE E. RACE

Brodhead, Kentucky

B. S.—*Education*

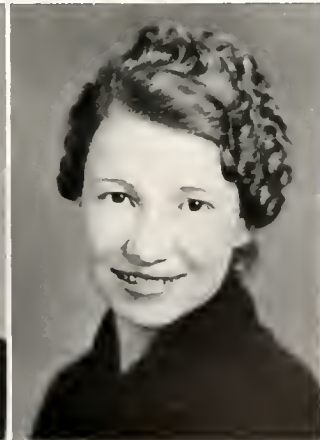
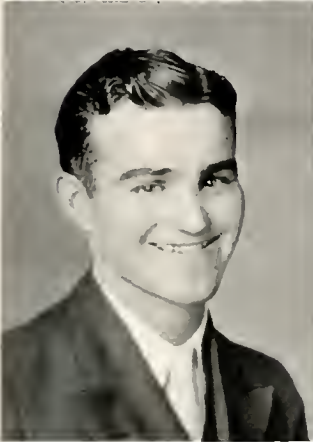
Elementary Council; Art Club.

HENRY HILL

Grove, Kentucky

A. B.—*Social Science*

Y. M. C. A.; World Affairs Club; Glee Club; Elementary Council; Sigma Tau Pi.





NORMA MASTERS
Irvine, Kentucky
B. S.—*Mathematics*

EVALYN WOODS
Nicholasville, Kentucky
A. B.—*Education*

BERNARD E. WILSON
Chattanooga, Tennessee
A. B.—*Physical Education & English*
Football '35, '36; "E" Club; Physical Education
Club; Upper Cumberland Club; Basketball Manager
'35, '36.

MARSHALL NEY
Fort Thomas, Kentucky
B. S.—*Commerce*
Little Theatre Club '34, '35, '36; Glee Club, Vice
President '35, President '36; World Affairs Club
'35, '36; Social Committee '36; Band '34, '35;
Junior Class Vice President '35.

DONALD MICHELSON
Mt. Sterling, Kentucky
A. B.—*English*
Editor Eastern Progress; Editor Belles Lettres; Glee
Club; Little Theatre Club; President Canterbury
Club '34; Alpha Zeta Kappa; Debating Team;
Regents' Oratorical Medal Winner; President of
Sophomore Class; Football '32, '33, '34; Track;
Secretary Ky. Intercollegiate Press Association;
Band '32.

DAISY CHESNUT
Oakley, Kentucky
A. B.—*English*
Upper Cumberland Club; Eastern Parliamentary So-
ciety; Y. W. C. A.

LUCILLE CASE
Richmond, Kentucky
B. S.—*Social Science*
Little Theatre Club; Social Science Club; Y. W. C.
A.

EDNA LILLIAN MCHARGUE
Pine Hill, Kentucky
B. S.—*Elementary Education*
Y. W. C. A. '33, '34, '36; Rural Life Club '33; Art
Club '36; Elementary Council '34, '35, '36; Social
Science '36.

BECKHAM POWERS
Shelbyville, Kentucky
A. B.—*English*
Social Science Club





EMMA HOLTECLAW
Lancaster, Kentucky

B. S.—Elementary Education

Elementary Council; Y. W. C. A.; Social Science Club.

NANNIE ESTRIDGE
Stanford, Kentucky

A. B.—Social Science

World Affairs Club; Canterbury Club; Social Science Club; Rural Life Club; Y. W. C. A.

PAUL W. SMITH
Somerset, Kentucky

A. B.—History

IRA G. STEPHENSON
Dry Ridge, Kentucky

A. B.—English & History

Basketball at Cumberland College; Kappa Delta Pi; Canterbury Club; Baseball.

RUSSELL H. STEPP
Inez, Kentucky

A. B.—Education & History

ESTELLA MIRACLE
Berea, Kentucky

B. S.—Early Elementary Education

Y. W. C. A. '30, '32; Elementary Council '36.

MRS. SALLY E. KIMBLER
Meta, Kentucky

B. S.—Home Economics

Home Economics Club; Kappa Delta Pi '36.

DOROTHY C. CREWS
Shelbyville, Kentucky

A. B.—History & Geography

Y. W. C. A. Sec. '34, '35, Pres. '35, '36; World Affairs Club; Sec. & Treas. '33, '34; Vice-Pres. '34, '35; Chairman Senior Class Social Committee '35, '36; Dormitory Student Council '33-'36.

HERSCHEL JAMES ROBERTS
Pineville, Kentucky

A. B.—History & Commerce

Pres. B. S. U. '34; Pres. Sigma Tau Pi '35; Pres. Social Science Club '36; World Affairs Club; Kappa Delta Pi; Upper Cumberland Club; Basketball, Georgetown; Track, Georgetown; Manager Track Team Eastern '33, '34, '35; Associate Editor Milestone '36.





SARAH ALLEENE ROBERTSON

Eminence, Kentucky

B. S.—Mathematics

Home Economics Club '35, '36; Dormitory Student Council '35.

PATTIE LUCILE TUDOR

Richmond, Kentucky

B. S.—Education

Elementary Education '32, '33, '34, '35; Art Club '33.

OAKLEY LANHAM

McKinney, Kentucky

B. S.—Agriculture & History

Progress Staff '35; Glee Club.

FENNER G. HEADLEY

Wolfeboro, New Hampshire

B. S.—Chemistry

Gamma Lambda Sigma; Track; Class Pres.; International Relations Club; Lincoln Memorial University; Alpha Zeta Kappa.

NORMAN E. BENTON

Irvine, Kentucky

B. S.—Chemistry

MRS. MARY ETHEL GARDNER

Franklinton, Kentucky

B. S.—Elementary Education

BESSIE HENRY

North Middletown, Kentucky

B. S.—Primary Education

Y. W. C. A. '32-'36, Treas. '36; Kappa Delta Pi, Reporter '36; Canterbury Club, Sec.-Treas. '36; Elementary Council '34-'36; Rural Life Club '33-'34.

MARGARET MARIE BUNCH

Ashland, Kentucky

B. S.—Education

EDWARD WEDDLE

Somerset, Kentucky

B. S.—Mathematics

Tennis; Track; Caduceus Club '34.





OPAL ACREE
Corinth, Kentucky
B. S.—Education

MONTE FAE VAUGHT
Somerset, Kentucky
A. B.—English & Geography
World Affairs Club; Rural Life Club; Y. W. C. A.

FUSON ENSOR SMITH
Middlesboro, Kentucky
A. B.—Health & Physical Education
Physical Education Club; Upper Cumberland Club;
Social Science Club; Baptist Student Union; Scout-
ing & Club Craft.

RICHARD GREENWELL
Shelbyville, Kentucky
B. S.—Physical Education & History
Football '32-'35, Captain '35, All-State '34-'35;
Baseball '32-'35; Sigma Pi Sigma '32-'35; "E"
Club '33-'35; Band '32-'33.

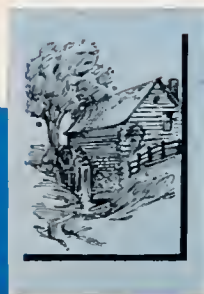
DONALD L. HALES
Jackson, Kentucky
B. S.—Chemistry & Biology
Baseball; Tennis; Zeta Sigma Phi; Der Deutsche
Verein; Class Pres.; Record Staff; Pikeville Col-
lege; Caduceus Society; Science Club.

PAULINE PULLIAM
Waddy, Kentucky
A. B.—History
Y. W. C. A.; Sigma Lambda; Alpha Zeta Kappa;
Social Science Club; Elementary Council.

JULIA DIXON
Blackey, Kentucky
B. S.—Elementary Education
Elementary Council; Social Science Club; Y. W. C.
A.; Letcher County Club.

MARY AUXIER FORD
Prestonsburg, Kentucky
A. B.—History

RAYMOND BOYD LONG
Russellville, Kentucky
B. S.—Agriculture





ANNA WARE ARRASMITH
Bethel, Kentucky

A. B.—*History & English*

Social Science Club '32-'33, '35-'36; Dormitory Social Life Committee '33-'34; Elementary Council '33-'34, '34-'35; Y. W. C. A.; Eastern Parliamentary Society '36; Sullivan Hall Office Staff '34-'35, '35-'36.

LOUISE FLEGE
Williamstown, Kentucky

B. S.—*Elementary Education*

Elementary Council; Y. W. C. A.; Canterbury Club.

J. B. SCEARCE, JR.
Bagdad, Kentucky

B. S.—*Physical Education & Health*

Basketball '34-'36; Physical Education Club; Y. M. C. A. '34-'35.

JAMES ANDERSON HAMBLIN
Dunraven, Kentucky

B. S.—*Agriculture*

Rural Life Club, Pres. '31; Men's Glee Club '31; World Affairs Club; Baptist Student Union Council; Campus Night Watchman.

ROGER WILSON
Richmond, Kentucky

A. B.—*Social Science*

Progress Staff; Social Science Club; Basketball.

LORINNE STIGALL
Danville, Kentucky

B. S.—*Intermediate Education*

Elementary Council '34-'36; Y. W. C. A. '35-'36.

FERNE O. GIBSON
Booneville, Kentucky

B. S.—*Elementary Education*

World Affairs Club; Elementary Council; Y. W. C. A.; Messiah.

CARRIE WILSON
Crab Orchard, Kentucky

B. S.—*Education*

Dormitory Council; Elementary Council; Y. W. C. A.

THOMAS FARRIS
Richmond, Kentucky

B. S.—*Chemistry & Mathematics*

Band; L. T. C.; Orchestra; Tennis; Swimming Team '35; Sigma Lambda '32; Caduceus, Pres. '36; Science Club; Swimming Instructor; Usher '33; Pres. Junior Class; Vice-Pres. Senior Class.





OCEA BROYLES
Brumfield, Kentucky
B. S.—Education

Elementary Council; Y. W. C. A.; Art Club; Cafeteria Worker; W. C. T. U.; Baptist Student Union.

LENORA OSBOURN
Sanders, Kentucky

A. B.—English & History

Canterbury Club; Social Science Club; Y. W. C. A.; Library Staff '35; Northern Ky. Club; Baptist Student Union; Dormitory Council; Cafeteria Worker's Club.

JAMES T. BRYANT
McKinney, Kentucky

A. B.—History

Social Science Club; Baptist Student Union; Agriculture Club; Rural Education Club.

LEVI SPURLOCK
Barcreek, Kentucky
B. S.—Chemistry

Science Club; Clay County Club.

RAY W. SETTLE
Crab Orchard, Kentucky

A. B.—History & Commerce

Baseball '34-'36; Basketball '35-'36; Football Manager '35; Social Science Club; Sigma Tau Pi.

MRS. IDA ROSS SPURLOCK
Barcreek, Kentucky

A. B.—English

Dormitory Staff '30; Canterbury Club '30-'36; Clay County Club '35-'36.

ERCIE MAE THOMAS
Airedale, Kentucky
A. B.—English

Y. W. C. A.; Dramatic Club '30-'31; B. Y. A. Sorority, Union College; Elementary Council '35; Social Science Club '36; Canterbury Club '36.

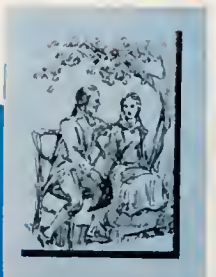
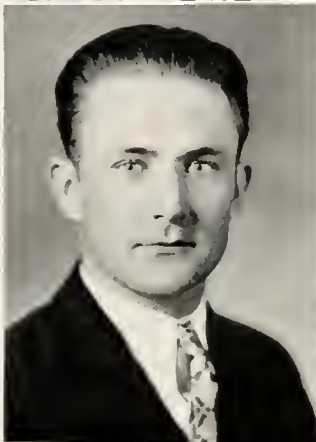
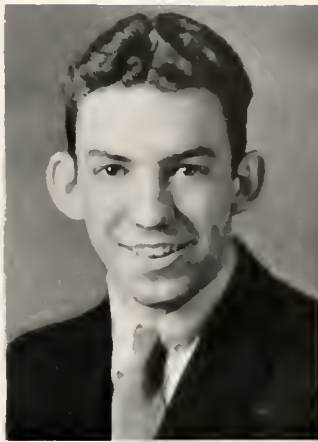
MRS. KATHRYN TAYLOR BAKER
Walton, Kentucky
A. B.—English

Northern Kentucky Club '35-'36.

HUBERT PERRY BAKER
Walton, Kentucky

B. S.—Mathematics

Northern Kentucky Club '35-'36.





OHNA LEE HAGAN
Richmond, Kentucky
B. S.—Home Economics

CLARICA W. TURNER
Pikeville, Kentucky
A. B.—English
Canterbury Club; Home Economics Club; Y. W.
C. A.

RONALD CONNELLY
Dry Ridge, Kentucky
B. S.—Commerce

CHARLES LELAND TRIBBLE
Richmond, Kentucky
A. B.—Industrial Arts
Engineering Class Society; Social Science Club.

OTTO SATTERLY
Harrodsburg, Kentucky
A. B.—Social Science

MRS. FANNIE PORTER
Clifford, Kentucky
B. S.—Home Economics
Home Economics Club.

EMMA OLIVE PATRICK
Sumner, Kentucky
A. B.—English & History
Canterbury Club; Social Science Club; Upper Cum-
berland Club; Baptist Student Union; Y. W. C.
A., Cumberland College '34.

MARY COYER
Prestonsburg, Kentucky
A. B.—History & English
Canterbury Club; Social Science Club.

EDWIN WARREN REYNOLDS
Waynesburg, Kentucky
B. S.—Agriculture





MRS. ZELLA SMITH HENSLEY
Estill, Kentucky

A. B.—*Geography & English*
Baptist Student Union '32-'33; Y. W. C. A. '31-'32.

WILLIA LUCILLE HOWARD
East Point, Kentucky

A. B.—*History*
Y. W. C. A.; Social Science Club.

LLOYD MURPHY
Brodhead, Kentucky

A. B.—*English & History*
Rural Life Club; Feature Editor Eastern Progress;
Social Science Club; Canterbury Club; Track Team;
Swimming Team.

WILSON GABBARD, JR.
Ricetown, Kentucky

A. B.—*Social Science*
Football '33-'34; Social Science Club '33-'36; Kappa
Delta Pi; "E" Club '34-'35; Physical Education
Club; World Affairs Club.

FLORIAN REED CALDWELL
Owenton, Kentucky

Mathematics & Biology
Basketball '31, '32, '33, '34; Glee Club '31-'34,
Alderson College, West Virginia; Science Club;
Boxing Club '35.

KATHRYN CUNDIFF
Irvine, Kentucky

B. S.—*Elementary Education*
Elementary Council.

MARION CORNETT
Larue, Kentucky

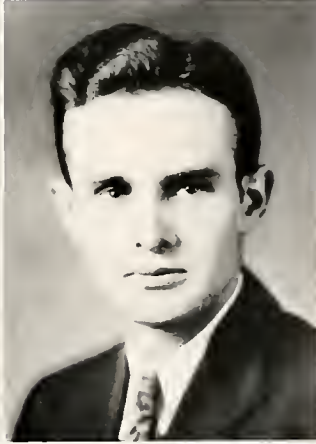
B. S.—*Elementary Education*
Home Economics Club; Elementary Council; Y. W.
C. A.; Dormitory Council.

EDNA K. BULLOCK
Pittsburg, Kentucky

B. S.—*Elementary Education*
Elementary Council '32-'36; Upper Cumberland
Club '32-'36; Y. W. C. A. '36; Home Economics
Club '36; Messiah '34.

LEMUEL N. STAMPER
Benham, Kentucky

A. B.—*English*
Y. M. C. A. Cabinet '34; Baptist Student Union
'34; Upper Cumberland Club; Progress Staff.





MAYME STANFFER HAMILTON
Richmond, Kentucky

A. B.—*Foreign Language*

Madrigal Club '32-'36; Sigma Lambda Treas. '33;
Psi Psi Psi Sec. & Treas. '34-'36; Social
Science Club '35, '36; Student Usher Staff '34,
'35; Student Swimming Instructor '32-'36.

MARTHA POTTER
Kona, Kentucky

B. S.—*Education*

Student Council; Social Science Club.

PIERCE WARMS
Lebanon, Kentucky

A. B.—*English & Commerce*

Y. M. C. A. '32-'36, Cabinet '33, '34, '35; Swim-
ming Team.

JOE MECCIA
Lynch, Kentucky

B. S.—*Mathematics*

Glee Club '32-'36; Freshman Football '32; Physical
Education Club; L. T. C. Stage Manager '36; Mile-
stone Staff '36.

MRS. MAURINE PATRICK DEATON
Salversville, Kentucky

B. S.—*Home Economics*

Home Economics; Physical Education '31, '32.

LOUISE LARKIN
Paris, Kentucky

B. S.—*Intermediate Education*

Dormitory Social Life Committee; Y. W. C. A. '33-
'36, Cabinet Member '35, '36; Elementary Council
'33-'36.

WILMA BOND
Richmond, Kentucky
B. S.—*Elementary Education*

FRANK HILL
Germantown, Kentucky

B. S.—*Commerce & History*

Pi Omega Pi, Treas. '35; Sigma Tau Pi, Vice-Pres.
'35, '36; Social Science Club, Treas. '35; Y. M. C. A.

CARL M. CLIFTON
Oldtown, Kentucky
B. S.—*Agriculture*

Y. M. C. A., Pres. '34; Agriculture Forum, Vice-
Pres. '34; Sec. Glee Club; Rural Life Club.





A. D. ROBERTS
Nancy, Kentucky
A. B.—History

BEULAH GABBERT
Harrodsburg, Kentucky
B. S.—Education

MARTHA HAMILTON
Mt. Sterling, Kentucky
A. B.—Social Science
Curry Club at Sullins; Sigma Tau Pi; Social Science
Club.

JOSEPH E. DYER
Prestonsburg, Kentucky
A. B.—History

MRS. FRANKLIN WEBSTER
Estill, Kentucky
A. B.—English







KATHERINE HALCOMB
Secretary

JOE HEDGES
President

ED. CONGLETON
Vice-President

DR. HERNDON
Sponsor

MORRIS CREECH
Treasurer

JUNIOR CLASS

We have finished the third portion of our short journey through Eastern College Days. We are eager to be on our way, in order that we may complete the task which we have started. It is not that we are anxious to leave old friends, and the college which we love, but we believe that the things which we have learned in the past three years will lead us to a life of real success.

This Junior Class has, since the beginning, been in the foreground. We have furnished many leaders for campus activities; we have given men to the football field; and we have a number in our midst who have made scholastic records which are enviable.

Although we are drawing near the close, we shall always retain memories of Eastern which are pleasant. May she have reason to be proud of us.





WILLIAM LEROY MACHT
Ft. Thomas, Kentucky

ELLIS B. BOGGS
Kings Creek, Kentucky

OVA ASBURY
Kenvir, Kentucky

MARGARET WHITE PARKS
Ravenna, Kentucky

MARZELLA LOUISE NORTHCUTT
Corinth, Kentucky

MABEL MALTIA WELLS
Auxier, Kentucky

H. LLOYD GOODLETT
Burgin, Kentucky

CHESTER ARTHUR MCINTYRE
Fusonia, Kentucky

WALTER L. MAVITY
Somerset, Kentucky

JOE GARLAND GILLY
Harlan, Kentucky

VILMA JENNINGS SAMUELS
Richmond, Kentucky

NAOMI MARGARET KALB
Brooksville, Kentucky

DOROTHY LEE DENHAM
Rice Station, Kentucky

INEZ MILLS JORDON
Winchester, Kentucky

CHARLES CALVIN BURTON
Blaine, Kentucky

WILLIAM METCALF
Tyner, Kentucky





PAUL BARRY DEMOISEY
Walton, Kentucky

CLIFFORD LEE CREECH
Pineville, Kentucky

SADIE LOUISE BALDEN
Harrodsburg, Kentucky

MRS. FRANK ROSE
Witt Springs, Kentucky

EMMA BELLE OSBORNE
Frenchburg, Kentucky

ALINE BERNICE JONES
Berca, Kentucky

AUSTIN S. HARROD
Bagdad, Kentucky

SHOFF OWEN DAUGHERTY
Monticello, Kentucky

EDMOND T. HESSER
Newport, Kentucky

DON LOUIS HIGNITE
Richmond, Kentucky

NAOMI GOBLE
Prestonsburg, Kentucky

KATE PADGETT
Paris, Kentucky

MARY KATHERINE HALCOMB
Burgin, Kentucky

MARGARET DUDLEY NEALE
Richmond, Kentucky

JACK McCORD
Richmond, Kentucky

WILLIAM EDWARD BECKNELL
Booneville, Kentucky





PEARL EUNICE WOODY
Pittsburg, Kentucky

MABEL E. HERREN
Bradfordsville, Kentucky

VERNON TAYLOR DAVIS
Paint Lick, Kentucky

W. W. BRIGMON
Fogertown, Kentucky

HARRY G. M. HATLER, JR.
Corbin, Kentucky

DORD EDWARD FITZ
Richmond, Kentucky

HELEN B. KISER
Covington, Kentucky

NELL ELIZABETH OGDEN
Bedford, Kentucky

MARY GARRETT NEELY
Somerset, Kentucky

KATHRYNE ROSE CAMPBELL
Hustonville, Kentucky

GEORGE EDWARD MARTIN
Covington, Kentucky

HAROLD KELLY CLORE
Burlington, Kentucky

LOUETTA ELIZABETH BUSER
Bradford, Kentucky

GEORGE MADISON SMITH
Corbin, Kentucky

OLIVER T. WILSON
Ansel, Kentucky

MARY EDNA KING
LaGrange, Kentucky

ALMA BEST
Harrodsburg, Kentucky





NANCY CUNNINGHAM COVINGTON
Richmond, Kentucky

ANNA RAE DOTSON
Phelps, Kentucky

ROBERT MORRIS CREECH
Richmond, Kentucky

W. C. HENSLEY
Estill, Kentucky

ELMER W. CUNNINGHAM
Switzer, Kentucky

ADRIEL NEWTON WILLIAMS
Shelbyville, Kentucky

BETSY RICHARDS ANDERSON
Shawhan, Kentucky

GERALDINE M. WEBB
Somerset, Kentucky

JANE OLIVE HENDREN
Kirksville, Kentucky

ALEENE L. WACHS
Covington, Kentucky

LESTER KEITH LOCKE
Kettle Island, Kentucky

WOODROW W. HINKLE
Paris, Kentucky

ELSIE MARIE REYNOLDS
Tyner, Kentucky

CHARLES JACKSON BENTLEY
Mt. Olivet, Kentucky

ROY TEAGUE
Gatliff, Kentucky

EDITH WEST HENSLEY
Sibert, Kentucky

EDITH LEMASTER
Riceville, Kentucky





LELIA McLEMORE
Ravenna, Kentucky

GARNET ELKINS
Yatesville, Kentucky

VIRGIL OTIS MCGLAMERY
Harlan, Kentucky

JOE HEDGES
Georgetown, Kentucky

ALLEN LEVI McMANIS
Carrollton, Kentucky

SAMUEL PRESTON WISE
Hargett, Kentucky

IMOGENE PRESTON
Offutt, Kentucky

KATHLEEN WELCH HILL
Richmond, Kentucky

MARGUERITE WYRICK
Richmond, Kentucky

NELL JACK STEWART
Elys, Kentucky

MOSS WAYNE FLANNERY
Herd, Kentucky

ROBERT HARMON SEEVERS
Irvine, Kentucky

WILLIAM OSA TERRILL
Mary, Kentucky

EDITH MARIE WARD
Ezel, Kentucky

PEARL DEEVER HENDRON
Harrodsburg, Kentucky

LEO ESTELL MOSS
Richmond, Kentucky

LEE L. POYNTER
Crab Orchard, Kentucky







JAMES NEALE
Treasurer

OTWELL RANKIN
President

NOEL B. CUFF
Sponsor

LENARUE CAYWOOD
Secretary

EDGAR MCCONNELL
Vice-President

SOPHOMORE CLASS

In opening it can be said that a true evaluation of one's successes can not be determined by the achievements of one year, but rather by a series of successes over a longer period of time. It is this that we are proud of. When our Freshman year was brought to a close, we were not "quitters" but we struggled on.

Our class has furnished members for every recreational and educational organization on the campus. We have, likewise, set a high standard in the classroom and in the field of athletics.

We are sure that throughout the rest of our college career we will continue to maintain and set ideals which will bring pride to every faculty member, student, and alumni of Eastern.

We are still sailing on toward our Senior year. Our wish is that we may be referred to as a class which stands for the high ideals which are already Eastern's.





CLIFFORD JOSEPH EUBANK
Covington, Kentucky

BEULAH ELIZABETH CLARK
Corbin, Kentucky

LUCILLE LAWTON
Bellevue, Kentucky

FRANK BUSH BLACK
Richmond, Kentucky

ALICE LEE TODD
Bobtown, Kentucky

SQUIRE BAKER
Oneida, Kentucky

RONDAL J. SHARP
Corbin, Kentucky

MATTIE LEE ENGLE
Berea, Kentucky

FRED LOUIS PAFF
Henderson, Kentucky

RUTH VIRGINIA PERRY
Ludlow, Kentucky

SUSIE LOU CORNETT
Larue, Kentucky

ORION M. DENNY
Winchester, Kentucky

EDITH MILDRED McDONALD
Eubank, Kentucky

OTWELL C. RANKIN
Covington, Kentucky

WILLIAM DONALD MUSIC
Auxier, Kentucky

BERTIE McDANIEL
Oakley, Kentucky

CLIFFORD RAYMOND PITTMAN
Richmond, Kentucky

GARNET LOUISE MCGINNIS
Ashland, Kentucky

LOU ELIZABETH McCOWAN
Victory, Kentucky

JESSE DAVIS MIRACLE
Chenova, Kentucky





ROBERT RUBY
Covington, Kentucky

THEDA GLADYS CAMPBELL
Four Mile, Kentucky

IRIS JEAN COTTON
Richmond, Kentucky

J. EDGAR MCCONNELL
Forks of Elkhorn, Kentucky

MARY ELIZABETH CLARKE
Auxier, Kentucky

CLEMENT McDOWELL
West Irvine, Kentucky

MOLLY ROGERS
Richmond, Kentucky

RUBY A. WHALEN
Cynthiana, Kentucky

RAYMOND STIVERS
Pleasureville, Kentucky

ELIZABETH KATHERINE EIFERT
Covington, Kentucky

ANNA RUTH REAMS
Langnau, Kentucky

WILLIAM HAROLD OWENS
Somerset, Kentucky

NANNIE BELLE SPURLOCK
Bar Creek, Kentucky

CLEDA R. LEE
Tyner, Kentucky

FON POTTER
Ash Camp, Kentucky

VERGIE EDITH STRUNK
Revilo, Kentucky

CHARLES AUGUSTUS RICHARDSON
Morning View, Kentucky

MARGARET STEELE ZARING
Richmond, Kentucky

ALBERTA LEE PHILLIPS
Stanford, Kentucky

GEORGE C. SCHARF
Ft. Thomas, Kentucky





HARRY KENNETH HERREN
Corbin, Kentucky

S. E. TAYLOR
Berea, Kentucky

KAROLYN SCRIVNER
Berea, Kentucky

FAYE MAXINE BENJEY
Coalgood, Kentucky

ANNE MARIL MARGITTAY
Richmond, Kentucky

JUANITA B. STROUD
Germantown, Kentucky

WILLIAM HERSCHEL OWENS
Maysville, Kentucky

RUSSELL MCKEE CHILDS
Falmouth, Kentucky

ARTHUR HINES
Somerset, Kentucky

HILDA GRACE MYERS
Covington, Kentucky

NAOMI N. GRITTON
Harrodsburg, Kentucky

LENARUE CAWOOD
Harlan, Kentucky

NELVA MARIE RICHARDSON
Science Hill, Kentucky

MARY GRACE MATTOCKS
Beattyville, Kentucky

MARY LOIS CLARK
Richmond, Kentucky

JACK GEORGE QUAING
Bellevue, Kentucky

CYRUS CURTISS PARKS
Berea, Kentucky

JAMES DAVIS TOLBERT
Owenton, Kentucky

ARNETTA E. WELLS
Falmouth, Kentucky

GERALDINE ALLEN
Prestonsburg, Kentucky





GLADYS WEST
Irvine, Kentucky

OHNA ASHCRAFT
Richmond, Kentucky

ELVY BENTON ROBERTS
Barbourville, Kentucky

WILLIAM E. BENNETT
Covington, Kentucky

JOHN EDGAR HOWE
Alexandria, Kentucky

JAMES M. HART
Bellevue, Kentucky

AGNES ALICE EDMUNDS
Bristow, Kentucky

MARY LILYAN SMITH
Ravenna, Kentucky

EVELYN J. EDMUNDS
Bristow, Kentucky

ANNA FRENCH EDWARDS
Corbin, Kentucky

KEARNEY CAMPBELL
Taylorsville, Kentucky

CHARLES WILLIAM WARNER
Covington, Kentucky

MERVIN C. DICKEN
California, Kentucky

GEORGINA CARTER
Palmou.h, Kentucky

EDITH GABBARD
Booneville, Kentucky

JEAN VIRGIN
Concord, Kentucky

ETHEL BROCKMAN
Sand Gap, Kentucky

ELIZABETH F. ROBERTSON
Finchville, Kentucky

WILLA JEAN SALVEY
Richmond, Kentucky

NORMAN I. LEE
Maysville, Kentucky





MARGARET HUBBARD
Ashland, Kentucky

MARTHA C. SUDDUTH
Winchester, Kentucky

FRED FELTY BISHOP
Felty, Kentucky

RUSSELL GILBERT
Irvine, Kentucky

ANNA LEE HUGHES
Maysville, Kentucky

LEWIS BAILEY
Lerose, Kentucky

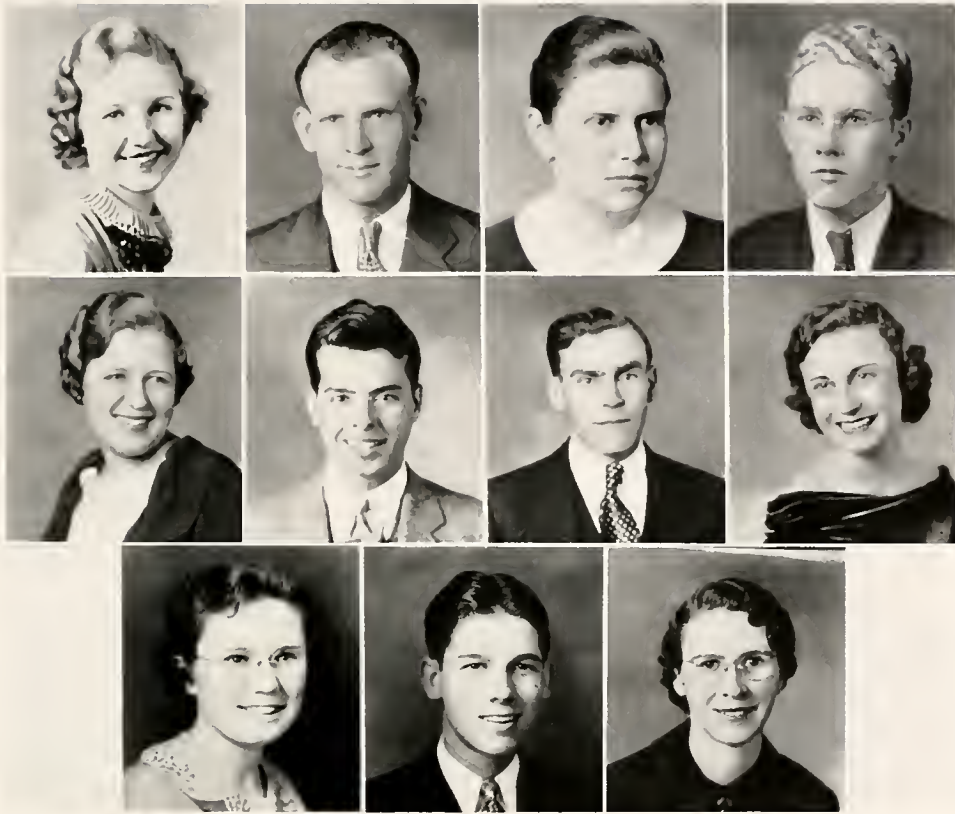
WOODROW POTTER
Ash Camp, Kentucky

MARGARET M. LOWE
Paris, Kentucky

VIRGINIA ANNE BOHN
Newport, Kentucky

NANNIE ROSE HERNDON
Booneville, Kentucky

NORBERT C. RECHTIN
Bellevue, Kentucky







DR. L. G. KENNAMER
Sponsor

LEONARD STAFFORD
President

HIRAM BROCK, JR.
Vice-President

PEARL STEPHENSON
Treasurer

LUCILLE NUNELLEY
Secretary

FRESHMAN CLASS

We, the class of 1939, have tried and feel that we have succeeded in making our first year at Eastern count.

We already have ambitions of making our College proud of us, and we desire to co-operate with our superiors in attaining all worthwhile goals.

We feel that at the end of this, our first year, we have gained something valuable. We have gained a great deal through our association with faculty members, classmates, and upper classmen. We have in this year learned the value not only of class activities, but also of extra-class activities.

We have not yet reached our goal, but we have a vision. "Vision must be supported by a fixed determination to build on a scale so grand that those who come after us may think us mad to have attempted it."

May "excelsior" be our guiding word.





Howard Harrison Wells
Frankfort, Kentucky

Elizabeth Anna Tripp
Alexandria, Kentucky

Callia Elizabeth Simmons
Prestonsburg, Kentucky

Edward Elmer Eicher
Ft. Thomas, Kentucky

Leslie George Roth
Covington, Kentucky

Willa Mae Wagner
Mt. Sterling, Kentucky

Marjorie Kelsch
Dover, Kentucky

Edna Gaye Hill
Germantown, Kentucky

Christine C. Duckwall
Lynch, Kentucky

Kathryn McNutt
Dover, Kentucky

Delbert Lee Estes
Science Hill, Kentucky

Thelma Robbins
Brodhead, Kentucky

Thelma L. Huber
Maysville, Kentucky

John Gilbert Ransdell
Erlanger, Kentucky

Joseph Greenwell
Shelbyville, Kentucky

Ruth Allene Hammonds
Richmond, Kentucky

Jessie Lillian Keltner
Somerset, Kentucky

Elizabeth Lee Ammerman
Shawhan, Kentucky

Emma Thomas Ballengee
Paris, Kentucky

B. Joyce Hermann
Newport, Kentucky

J. W. Mullikin, Jr.
Ewing, Kentucky

Lillian Talley
Mayslick, Kentucky

Dorothy Mac Maupin
Whites, Kentucky

Fred Marstone Mayes
Mt. Sterling, Kentucky

Homer Wendell Ramsey
Whitley City, Kentucky





James Sory Rogers
Covington, Kentucky

Mary Ella Miracle
Loyall, Kentucky

Virginia B. Sanders
Harrodsburg, Kentucky

Wilson Thomas Ashby
Shelbyville, Kentucky

Philip Bush
Ravenna, Kentucky

Helen Jean Penn
Corinth, Kentucky

Lillian Browning Wilson
Irvine, Kentucky

Margaret Louise Cotton
Kirksville, Kentucky

Ethel Hendrickson
Four Mile, Kentucky

Joyce Cotton
Richmond, Kentucky

William G. Moore
Richmond, Kentucky

Gladys Reiley
Alexandria, Kentucky

Rebekah M. Vallandingham
Owenton, Kentucky

Jack Carl Dann
McRoberts, Kentucky

William F. O'Donnell
Richmond, Kentucky

Hannah Cockerham
Beattyville, Kentucky

Helen Gaines
Owenton, Kentucky

Mary Elizabeth Pendergass
Pryse, Kentucky

Dorothy Ann Burk
Covington, Kentucky

Edyth Lee Farmer
Beattyville, Kentucky

Melvin Menz Weisgerber
Argillite, Kentucky

Mrs. Geneva C. Bryant
McKinney, Kentucky

Margaret Lee Ross
Ft. Thomas, Kentucky

T. J. Black
Richmond, Kentucky

Robert C. Hamilton
Elizabethtown, Kentucky





Louis H. Mayo
Prestonsburg, Kentucky

Emma V. Stevens
Alexandria, Kentucky

Helen Dorothy Schorle
Newport, Kentucky

Clarence E. Gilbert
Lynch, Kentucky

Earnest Little
McWhorter, Kentucky

Joy Bailey
Richmond, Kentucky

Beulah C. Gentry
Bromo, Kentucky

Ohna M. Isaacs
Richmond, Kentucky

Anna Belle Hunter
Nicholasville, Kentucky

Eleanor Ruth Luginbuhl
Norwood, Ohio

Bishop Taulbee
Mary, Kentucky

Genevieve Martin
London, Kentucky

Doris Lynn Burgess
Paint Lick, Kentucky

Ensley Wright
Somerset, Kentucky

Herman Dewitt Fields
Falmouth, Kentucky

Peggy Schneider
Newport, Kentucky

Georgetta Metcalfe
Paint Lick, Kentucky

Gertrude P. Hahn
Richmond, Kentucky

Jane Case
Richmond, Kentucky

Gretchen G. Garriott
Lexington, Kentucky

George Wilson Durr
Harrodsburg, Kentucky

Lena Louise Brown
Catlettsburg, Kentucky

Allene Kelley
Pleasureville, Kentucky

Carl Franklin Cupp
Higsplint, Kentucky

William Marvin Pieratt
Frenchburg, Kentucky





Hiram Brock, Jr.
Harlan, Kentucky

Mae Moneyhon
Augusta, Kentucky

Lucille W. Nunnelley
Hustonville, Kentucky

Emil Dixon
Blackey, Kentucky

Estill Bernard Howard
Wallins, Kentucky

Myrtle Lee Johnson
Richmond, Kentucky

Denola Tolliver
Hazard, Kentucky

Vera Catherine Wilborn
Shelbyville, Kentucky

Jane Mary Buckley
Covington, Kentucky

Mary Agnes Bohn
Shelbyville, Kentucky

Charles Leonard Stafford
Covington, Kentucky

Helen Charlotte Hornaday
Lebanon, Kentucky

Virginia Lee Winter
Dayton, Kentucky

Orman Conrad
Falmouth, Kentucky

Charles Tutin Billerman
Ft. Thomas, Kentucky

Lois May Eich
Bellevue, Kentucky

Vivian D. Ballard
Ravenna, Kentucky

Zelma Elizabeth Moore
Irvine, Kentucky

Pearl Mae Stephenson
Richmond, Kentucky

Mildred Frances Richardson
Science Hill, Kentucky

Hubert Lee Cox
Irvine, Kentucky

Onceda Helen Robinson
Harrodsburg, Kentucky

Florence Blair Creech
Paint Lick, Kentucky

Teddy Curtis Gilbert
Pineville, Kentucky

Dann Wood Denny
Richmond, Kentucky





FLUTE AND VIOLIN

*The
Bluegrass*



Across the gently rolling dreamy land, green with the hue that only Kentucky blue grass can impart, come the sweet clear notes of the flute and the dreamy haunting tones of the violin. All the romance, the glamour, the glorious luxury of the South is present in these notes. All the sentiment, the customs, the traditions of Kentucky is given expression. List to the notes of the flute and the violin.





MISS EASTERN

JOY BAILEY

ATTENDANTS



NANCY COVINGTON



GLENN MAE BEGLEY

MOST POPULAR

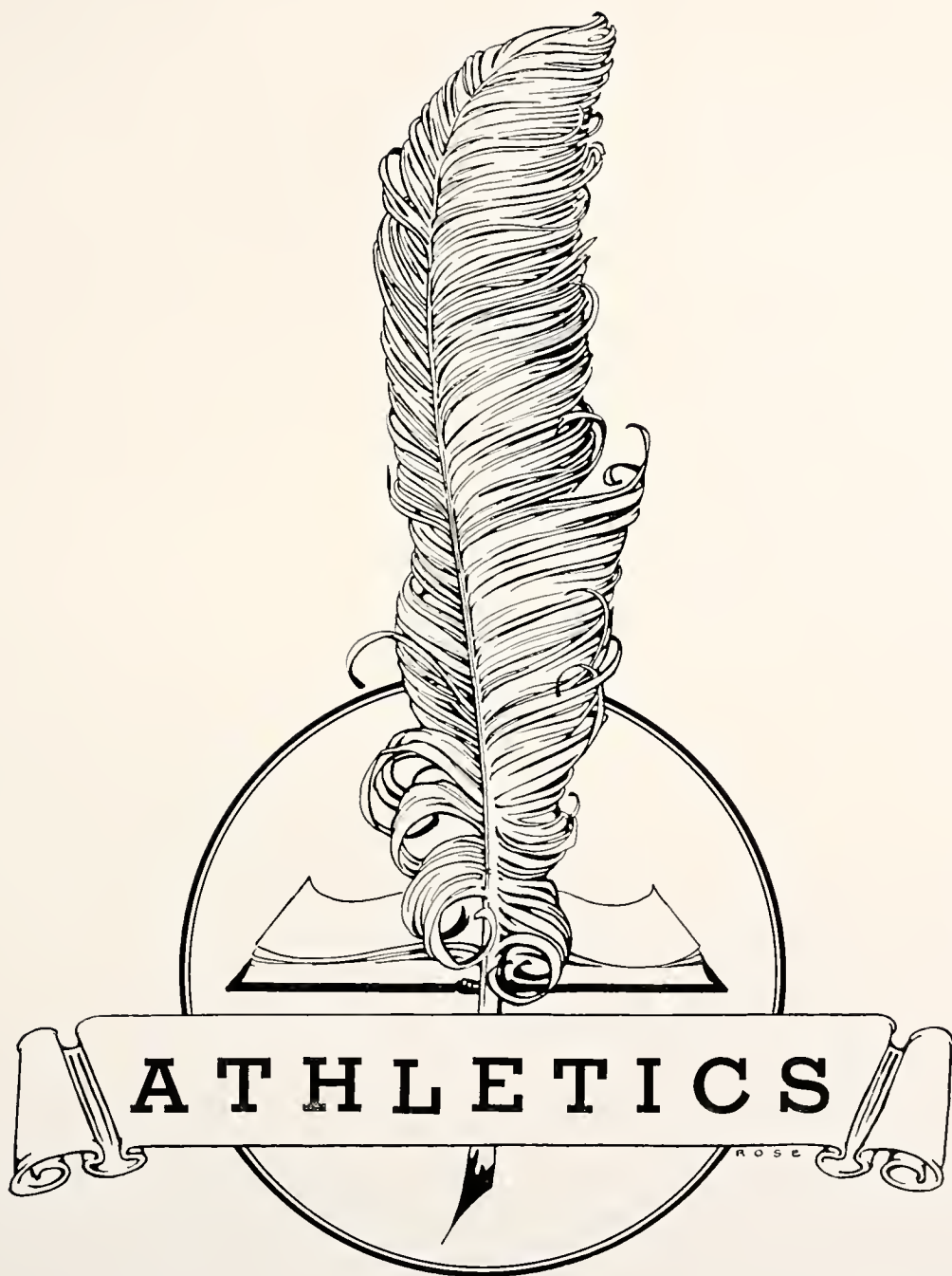


KATHERINE PRATHER



RICHARD GREENWELL





THE GREAT MEADOW



Joy and sorrow, sunshine and shadow, flit across life, life the great meadow; back and forth endlessly, like Dionys's shuttle, weaving a new thread in times' strange pattern, making a fine thread strong and enduring.

When the sun sinks, all is forgotten; gone are the joys, gone, too the heart aches; still are the fingers, at rest from their spinning. Stilled is the heart in her calm bosom; never again will sorrow and anguish rend the quiet soul or shake its foundations.





COACHES

ROME RANKIN, A. B., M. A.

Head Coach

His first year's teams at Eastern were much greater teams than the final percentage showed. A great coach in the making.

TOM SAMUELS, B. S., Ph. C.

Line Coach

His line continued to be one of the hardest for any opponent to penetrate. This can be proved by the final number of points scored against the Big Maroons.

CHARLES "TURKEY" HUGHES, B. S.,
M. A., *Freshman Coach*

Although the Freshman teams were not great ones, they were taught plenty of football and basketball which will help make a great varsity team next year.



Director of Physical Education
THOMAS E. McDONOUGH

CAPTAIN



Probably the greatest athlete to wear the Maroon and White for Eastern in the last half dozen years is Dick Greenwell. "Puss," as he is affectionately called by his teammates, came to the Alma Mater in the fall of 1931. He had been the captain and a star on the Shelbyville High School football team which at that time was under the tutelage of Alfred Portwood. Coach Portwood had a wonderful team that year and no little credit was due to the stellar play of Greenwell.

From his fine success on the Frosh team, Puss went on to higher glory when he played under the guidance of Coach Charles Hughes during his next two years. Standing out like a beacon among the darkness in every game he played, Dick soon established himself in the minds of the fandom of the state as one of the outstanding players in Kentucky; he was well known for his vicious line play and for his accurate place-kicking when the Maroons were hard-pressed for points.

When Coach Rome Rankin took the helm at Eastern last year, he appointed Greenwell captain of his first Maroon eleven. As the records will show, he made a wonderful captain, and played so well that he was an unanimous choice for a guard position on the All-State football team of 1935.

Everyone knows Richard Greenwell, likes him. He was chosen as the most popular man on the campus this year. He is loved by the men who have played with him these three years. There exists between Puss Greenwell and his team-mates a bond that space, time, nor man can ever sever. He will always remember Eastern and the men with whom he played and Eastern and those men will never forget "Puss" Greenwell.





HEDGES



CUMMINS



FARRIS



LUND



WALLACE



O. KING



LIMB
(End on Little
All American
Team)

MOLSBERGER

EVERLING





MAVITY



SCOTT



RECHTIN



FULKERSON



PILLE



JENKINS

KILLEN

(Half Back on All-State Team and Little All American Team)



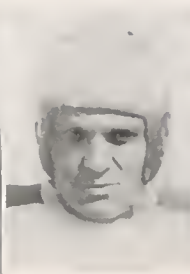
WALKER

CALDWELL





MCCONNELL



LONG



TARTER



WILSON



BRINTON



LACY



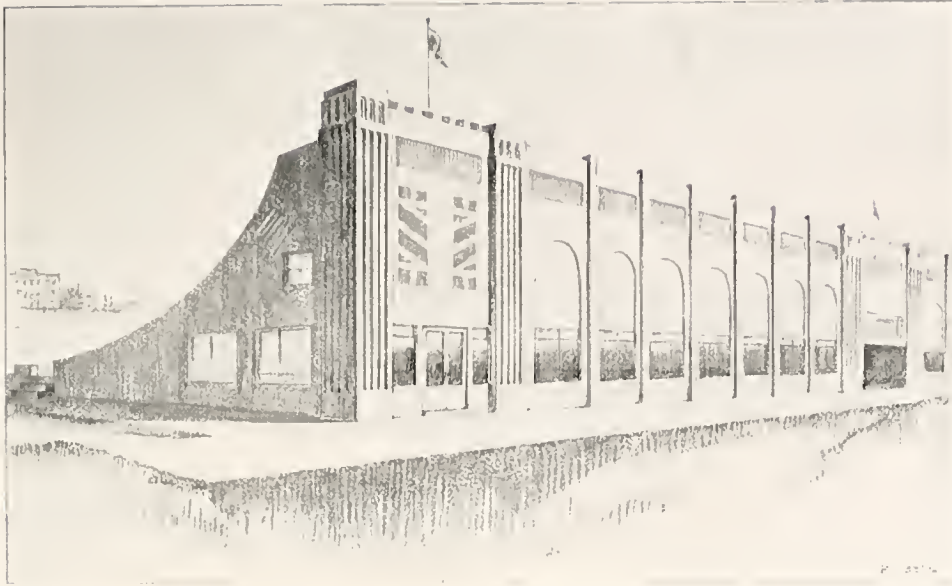
JENKINS
(Eastern's punter)

R. KING



CANTER





VARSITY FOOTBALL

During the first year of Coach Rome Rankin's activities at Eastern, one of the smoothest and best clicking teams our school has ever had showed its wares for the Alma Mater. Some of the best football, and some of the most thrilling games one could witness on any gridiron were witnessed on our own Stateland Field. This can easily be proved by the fact that ten more points would have won three more football games for us.

Probably the three most thrilling games of the season were the Georgetown, Union, and Transylvania games, all played on our own field. A mere break in either of these games would have meant victory for Eastern. The Maroons were not outplayed or outfought in any part of these games.

The following statistics will show you better than anything else just the strength of the Maroons this season. Eastern made a total of 75 first downs to the opponents' 43, a total yardage gain of 2314 yards to the opponents' 976. Thirty-nine per cent of the forward passes completed to 29 per cent of the opponents' completed.

Graduation will take some of the most dependable and hardest fighting boys from the squad. Bernard Wilson, Farris Long, Richard Greenwell, and Roy Pille all graduate in June. It will be hard to find boys to fill the shoes of these men.

College spirit, as evidenced by interest in athletics has reached new heights at Eastern. Our institution had not stressed the athletic phase of college life, but had only emphasized the academic point of view. The season of 1934-35 was not very successful and much criticism concerning our athletic program was heard. It was at this point that a new athletic program was launched and every one connected with the institution was urged to co-operate. The administration was fully convinced that in order to have a well rounded and well represented college we must have good athletic teams. It is a well known fact that Eastern is known better in the United States for its academic record than it is known in Kentucky for its athletics. Not only the administration, but the student body as well had shown more school spirit than ever before in the history of the school. It is only with school spirit that a school can go forward.

With the launching of our new athletic program, a new coach was secured. The services of a highly recommended coach, Rome Rankin, were obtained. He came to Eastern to build our interscholastic competitive athletics to a new height. Our coach came to Eastern with one of the finest reputations and records that can be found. New Boston, Ohio High School, his old lair, had won many championships during his eleven years at that school.

We hope that the school spirit of the student body will continue to grow. We feel sure that with a hearty co-operation from everyone, that Eastern will be soaring in athletics before many seasons.



FRESHMAN FOOTBALL

Eastern State's Freshman team went through its short but tough season's schedule with not a lot of success or glory, but did its best and showed up well. They did much better than the scores indicate.

Against Centre Frosh, which was one of the greatest Frosh teams Centre has ever had, they made a great showing and had some tough luck when near the goal line.

In the Transylvania game the Little Maroons outgained their opponents and outplayed them by far in every department, but by another unlucky break a Transy back got away for a long run.

Some valuable material for next year's Varsity was uncovered and should add greatly to next year's power. Coaches Hembree and Hughes are to be congratulated on the fine piece of work they did with the Frosh team.

In the line were several boys who looked as though they might be hard to beat out for a berth on the varsity eleven next fall. Possibly the most formidable was Harvey Snyder, Captain. Others who showed much power and stamina were Cox, Johnson, Cammack, Collins, Brock, and Hagood. In the backfield Leroy Davis, Bill Singleton, Walter Hill, Milton Feinstein, and Ben Robinson looked especially good.

Eastern 0.....Centre 19

Eastern 6.....Transylvania 7



BASEBALL

Eastern can rightfully boast of her baseball teams. Since baseball was first instituted at Eastern she has had very outstanding teams reigning supreme among colleges not only in our own state but coping with the large schools from other states in the great American pastime. Baseball is one of the sports on our campus that is truly recognized and looked forward to. Eastern has beaten every opponent consistently. Our rival, Western, the green eyed monster of other sports, is usually no match for our baseball club.

Eastern has sent to the big leagues some outstanding performers and one that will be remembered long; namely, Earl Combs, once the outstanding outfielder of either league. Earl still attends all athletic contests at Eastern and boasts of his Alma Mater heartily. Other sterling performers are Clyde Hatter with Detroit and "Red" Philips, under contract to the Cincinnati Reds.

At present there are some two or three members of the team who are looking forward to big league tryouts. Charles Bryant already has had experience with some fast company and should "go up" in a few more seasons. Donald Music, a 6 ft. 4 in. left-handed first baseman, shows promise of developing into fine material. There are several other boys who are just as formidable, namely: Ray Settle, Paul DeMoisey, Jim Caldwell, Preston Short, in the field; Mavity and Greenwell behind the plate.

Coach George Hembree has several newcomers this season. We are looking forward with much enthusiasm to their development and he has done much toward the performance of many on the baseball field. May we say, that much of the credit for our baseball success is due directly to Coach Hembree, and to him we lift our hats. More power to you, Coach Hembree.





RANKIN

NEIKIRK

R. KING

SCEARCE

MUSIC



CAPTAIN HINKLE

(All-State on K. I. A. C. Conference
Team and high scorer of Eastern
team)



DEMOISEY

FULKERSON

H. DOUGLAS

JENKINS

SETTLE



SCOTT

(Honorable Mention on All-State, K. I.
A. C. Conference Team)



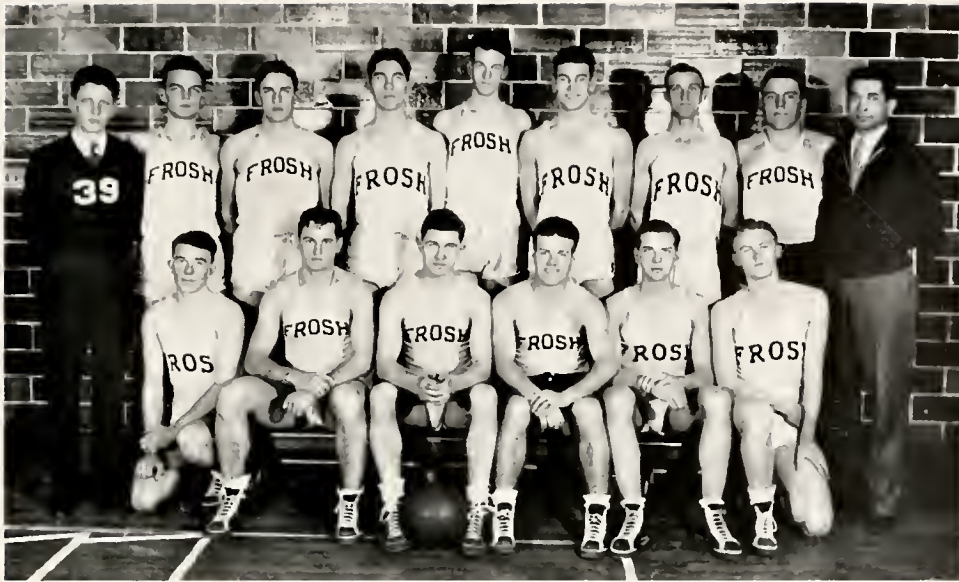
VARSITY BASKETBALL

Although the winner of the K. I. A. C. was not Eastern, she was second only to the winner, Western. Coach Rome Rankin, serving his first year as basketball mentor at Eastern, sent his charges through a successful season and to the finals in the State Tournament. Indeed the team is one of which the school can be very proud.

Before the season began a great team was predicted, but with the playing of the first game the team looked only mediocre and as the season progressed the situation seemed even more depressing. Substitutions were made by Coach Rankin in an effort to find a winning combination and in the Murray game a combination was found which seemed to click. This was one of the most beautifully played games of basketball ever seen on Eastern's hardwood. From that game until the end of the season Eastern was a winner. The Big Maroons won six of their last seven starts. They won two of the three games in the tournament, making eight games won in ten starts.

Out of the twenty-two games played this season Eastern scored 678 points to the opponents' 763, which adds to the glory of the team.

The combination which closed the season effectively was Hinkle and Scott as forwards; Fulkerson at center; DeMoisey at guard; and Rankin at the other guard. Especially outstanding were Captain Hinkle and Scott, both being All-State men. King, a sophomore, was a worthy substitute for any position. Ray Settle and J. B. Scearce, the only seniors on the squad, were two of the most valuable men on the team. Jenkins, Douglas, Music, Neikirk, and Limb, all sophomores, did great work in making the team a success.



FRESHMAN BASKETBALL

Eastern Freshmen, like the varsity, did not begin the season with a great glory, but by the end of the year the Little Maroons had hit their stride and were beating opponents consistently. Although they were not a high scoring team they were consistent and worked together well. Their passwork predominated their goal shooting. There was no outstanding star on the team.

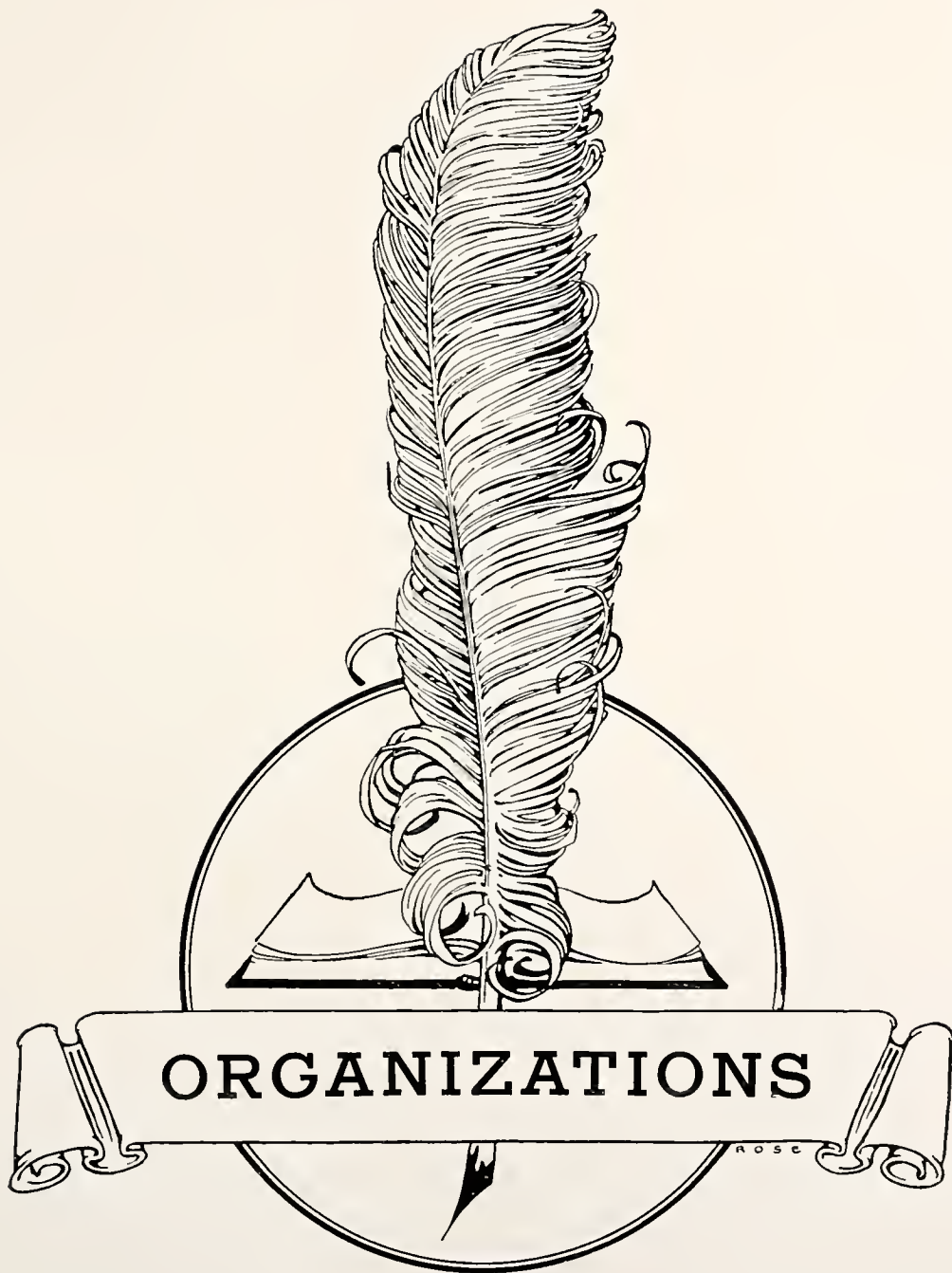
Probably the most unique member of the team was Jerry Hacker, of Annville. He rarely used a two hand shot, but was uncanny with a one hand, push shot. Leroy Davis looked like a good varsity man and was a fine guard. Big Bill Singleton showed signs of developing into a "big-timer." Leslie Voshell seemed to have an especially good eye for the basket from the floor. Hill, Rice, Yeager, Dixon, and Cox, all appeared to be varsity material with some coaching.

Eastern 16.....	Transylvania 19
Eastern 30.....	Berea 33
Eastern 27.....	Georgetown 40
Eastern 37.....	Highland 21
Eastern 36.....	Transylvania 16
Eastern 38.....	Kentucky Wesleyan 32
Eastern 37.....	Georgetown 51
Eastern 31.....	Berea 33





I
N
T
R
A
M
U
R
A
L
S



OLD JUDGE PRIEST

*The
Purchase*



Wherever the name of Kentucky is known, and wherever a bit of humor and wit is enjoyed and appreciated, the name of Irvin S. Cobb is known and loved and needs no introduction. Perhaps no individual is more widely received or more universally beloved than is the person who is always possessed with a bit of ready wit and wholesome humor. Such a character is Irvin S. Cobb, imbibing all of the wit, the friendliness, the gentle humor of Kentucky.





MILESTONE

KATHERINE PRATHER
Associate Editor

MARION BERSOT
Advertising Editor

ROBERT TERRILL
Assistant Business Manager

KATHRYN WILKINS
Literary Editor

KATHLEEN WELSH HILL
Literary Editor

BESSIE HENRY
Literary Editor

DORD FITZ
Art Editor

JAMES HART
Art Editor

N. G. DENISTON
Faculty Sponsor



STAFF

ELLA RAY HASTIE
Typist

O. Y. (PAT) STEWART
Typist

JOE MECCIA
Snapshot Editor

OTWELL RANKIN
Sports Editor

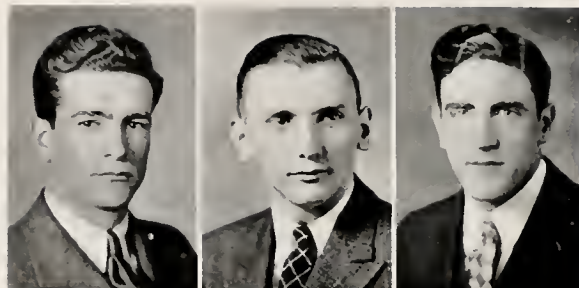
FRANCES HANNA
Senior Class Rep.

EDMOND T. HESSER
Junior Class Rep.

ELIZABETH ROBERTSON
Sophomore Class Rep.

VIRGINIA WINTERS
Freshman Class Rep.





EASTERN PROGRESS

MEMBER OF THE KENTUCKY INTERCOLLEGIATE PRESS ASSOCIATION

EDITORIAL STAFF

Donald Michelson, '36.....	Co-Editor
Morris Creech, '37.....	Co-Editor
Kelly Clore, '37.....	Sports Editor
Agnes Edmunds, '38.....	Feature Editor
Betsy Anderson, '37.....	Society Writer
Margaret Willoughby, '37.....	Society Writer
W. L. Keene.....	Faculty Sponsor
Margaret Benton, '38.....	Secretary to Editors

BUSINESS STAFF

Allen McManus, '37.....	Advertising Manager
Kenneth Herron, '38.....	Assistant Manager
Vernon Davis, '37.....	Assistant Manager
Billy Adams, '39.....	Model Hi Representative

CIRCULATION STAFF

Roger Wilson, '36.....	Circulation Manager
Lloyd Goodlet, '36.....	Assistant Circulation Manager
J. D. Tolbert, '38.....	Exchange Editor

REPORTORIAL STAFF

Kathryn Wilkins, '37	Virginia Winters, '39
Charles Warner, '37	Paul McGinnis, '37
Mildred Swetnam, '37	Milton Feinstein, '39
Jack McCord, '37	James Dykes, '39
Heman Fulkerson, '38	Lemuel Stamper, '36

PROGRESS PLATFORM

The establishment of an active student council.
 A more active alumni association.
 Further expansion in the athletic program.
 Greater participation in intramural athletics.





The current academic year has been a significant one to *The Eastern Progress*. It has marked the culmination of the worthy efforts and ambitions of some twenty-five staff members, who by dint of their loyalty and hard work won for Eastern the silver trophy for the best college newspaper in Kentucky.

Under the co-editorship of Donald Michelson, in the editorial department, and Morris Creech in the business department, the *Progress* achieved an enviable place among Kentucky college publications. As well as gaining the Lexington *Leader* trophy, the *Progress* received the further distinction of the awarding to its editor, Donald Michelson, a gold key by the Kentucky Intercollegiate Press Association for the outstanding editorial.

The editors of the *Progress* pass on, reluctantly, to make room for their successors, trusting that future editors will uphold the fine ideals of Eastern and the *Progress*, given them by years of experience that has mellowed and become tradition.





LITTLE THEATRE CLUB

OFFICERS

JACK HUGHES	President
ELIZABETH McILVAINE	Vice-President
LOUISE KENDALL	Secretary
BARBARA CONGLETON	Treasurer
ROBERT TERRILL	Business Manager
JOE MECCIA	Stage Manager
THOMAS FARRIS	Sergeant-at-Arms
PEARL L. BUCHANAN	Faculty Sponsor



MEMBERS

Louise Balden
 Carlotta Boneta
 Lucille Case
 Harold Kelly Clore
 Frances Cocanougher
 Barbara Congleton
 Mary E. Denny
 Mary Dorris
 Thomas Farris
 Susan Gagg
 Frances Hanna
 Pearl Hendren

Edith Hensley
 Jack Hughes
 Margaret Hubbard
 Mary K. Ingels
 Theodore Keith
 Louise Kendall
 Joe Meccia
 Donald Michelson
 Caroline Moores
 Jack McCord
 Paul McGinnis

Elizabeth McIlvaine
 Marshall Ney
 Elizabeth Ogden
 Ruth Perry
 Norbert Rechten
 Nelva Richardson
 George Scharf
 Rondal Sharp
 Robert Terrill
 Gwladys West
 Margaret Willoughby
 Margaret Zaring

NEOPHYTES

Mildred Abrams
 Geraldine Allen
 Jane Case
 Russell Childs

Elizabeth Collins
 Lon Dorsey
 Gretchen Garriott
 James Hart
 Joyce Hermann

Ann Margittay
 Charles Warner
 Virginia Winter
 Fred Worthington

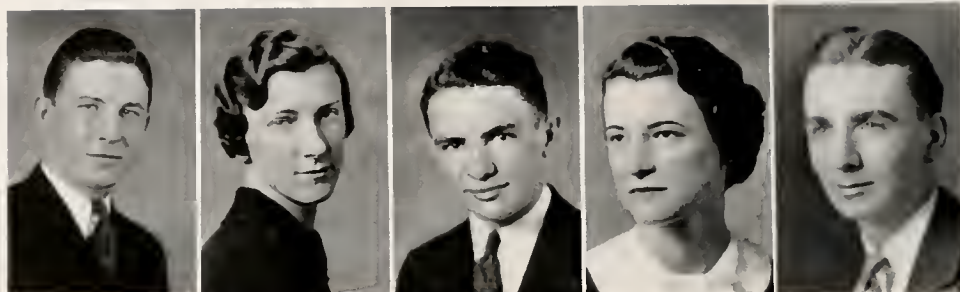


LITTLE THEATRE

The Little Theatre Club, dramatic organization of the campus, was organized in 1918. Since 1918 the club has carried on, enriching the tradition established by early members. Last year's production of "Twelfth Night" bids fair to establish another tradition, that of an annual Shakespearean Play. "The Taming of the Shrew" is scheduled for production this year.

Each year the Little Theatre presents several well known productions, together with assembly and try-out plays. One of the major activities of the organization is the managing of the invitational dramatic tournament held each year at Eastern. This tournament is known throughout the state, and this year many high schools from many sections of the State will be represented at Eastern. Thus, the Little Theatre, as well as giving dramatic training, is also training students in the art of play production. Such a function is well worth while in a teacher's college.





SIGMA TAU PI

The Sigma Tau Pi is Eastern's Commercial "spotlight." Majors and minors in commerce and others taking some commercial work and showing a special interest in the club are invited to become members of the organization.

It is the purpose of the Sigma Tau Pi, through regular meetings, and through various social functions of varying types, to bring about a feeling of unity and good fellowship among its members.

This organization offers its members experience in social and club affairs. They learn to preside correctly at meetings and to initiate and carry out projects in connection with the institution.

From time to time prominent people in the business world are brought to the campus to speak to the club or to the student body.

Among the members there is a feeling of genuine loyalty to the profession represented. Lasting business and personal connections are constantly being made by means of the Sigma Tau Pi.

OFFICERS

OTWELL RANKIN	President
FRANK HILL	Vice-President
FRANCES HANNA	Secretary
ELLA RAY HASTIE	Treasurer
PAT STUART	Sergeant-at-Arms
R. R. RICHARDS	Faculty Sponsor



SIGMA TAU PI MEMBERS

Otwell Rankin
 Pat Stewart
 Frank Hill
 Jack Smith
 J. D. Tolbert
 Herschel Roberts
 Bob Ruby
 Norbert Rechten

Henry Lee
 Lester Locke
 William Richards
 Gay Owens
 Anne Margittay
 Frances Hanna
 Juanita Stroud
 Ella Ray Hastie
 Harold Hieronymous

Rondal Sharp
 Elmer Douglas
 Marshall Ney
 Thomas Scott
 Ray Settle
 Violet Lewis
 Willa Mae Wagner
 Louise Balden





THE WORLD AFFAIRS CLUB

The World Affairs Club at Eastern was organized in 1932. It is affiliated with the International Relations Clubs of the United States and is partially supported by the Carnegie Endowment for International Peace. The purpose of the Club is to encourage students and faculty to be tolerant of the ideas of other people, to study with an open mind all the problems of international relations, and to grasp the true significance of world brotherhood.

Membership in this club is of two classes—(1) active, and (2) associate. Active membership is invitational and limited to the majors and minors in the Department of Geography and Geology. Eligibility is based upon a general average of 1.5 and a departmental average of 2.0. Associate membership is invitational and is open to all faculty members and graduates of the college.

ACTIVE MEMBERS, 1935-36

DAILY R. TURNER	President	
THOMAS LUDWICK	Vice-President	
HELEN HOWELL	Sec. & Treas.	
DR. L. G. KENNAMER	Sponsor	
MARY FRANCES MCKINNEY	Sponsor	
Daily Turner	Fern Gibson	Leo Moss
Keith Dicken	Inez Gordon	Nannie Estridge
Gano Caywood	Herschel Roberts	Helen Kiser
Helen Howell	Wilson Gabbard	Thomas Ludwick
Dorothy Crews	Donald Music	Fay Vaught
James Hamlin	Cecil Purdon	Elizabeth Ogden

ASSOCIATE MEMBERS

Dr. L. G. Kennamer
Mary Frances McKinney

Miss Eliza Hanson
Mrs. Emma Y. Case
Dr. H. L. Donovan

Mrs. H. L. Donovan
Virgil Burns



CANTERBURY CLUB

JACK McCORD	President
KATHLEEN WELSH HILL	Vice-President
BESSIE HENRY	Sec.-Treas.
DR. ROY B. CLARK	Sponsor

Madge Littrell
Maude Linley
Don Michelson
Jack McCord
Kelly Klore
Bessie Henry

Glenna Begley
Brown Lee Yates
Agnes Edmunds
Margaret Benton
Exie Skaggs

Kathleen Welsh Hill
Clarica Turner
Wilma Bond
Keith Dicken
Delona Hacker
Garnet McGinnis





Y. M. C. A.

CHARLES A. HUGHESFaculty Advisor
 WALTER MAVITYPresident
 HERSCHEL OWENSVice-President

The Y. M. C. A. and Y. W. C. A. of Eastern, in striving to serve the needs of the student body, have set up the following purposes:

1. To lead young people to faith in God through Jesus Christ.
2. To promote growth in faith and character of young people, especially through prayer and study of the Bible.
3. To provide an opportunity for greater Christian fellowship.
4. To create a friendlier attitude among the younger people on our campus in particular and among young people in general.



Y. W. C. A.

DOROTHY CREWSPresident
 KATHRYN CAMPBELLVice-President
 MAUDE LOUISE LINLFYSecretary
 BESSIE HENRYTreasurer

Naomi Gritton
 Elizabeth Robertson
 Helen Gardner
 Ruth Herrell

Garnet McGinnis
 Ruth German
 Louise Larkin

Margaret Ross
 Faye Benjey
 Kitty Holcomb
 Helen Kiser

If being on the campus for Freshman Week, welcoming new students and helping them to adapt themselves to their new life; if co-operating together in presenting the impressive services of the hanging of the greens and in sponsoring an annual Christmas party for the underprivileged children of the city of Richmond; if bringing to the campus during the school year some of the most outstanding speakers in the country; if these things indicate the fulfillment of our four purposes, then the Y. M. C. A. and Y. W. C. A. are vital factors on Eastern's campus.





SOCIAL SCIENCE CLUB

CHARLES A. KEITHSponsor
HERSCHEL ROBERTSPresident
WILSON GABBARDVice-President
O. Y. (PAT) STEWARTVice-President
KATHERINE CAMPBELLSecretary
FRANK HILLTreasurer
FUSON SMITHHistorian



PARLIAMENTARY CLUB

OFFICERS

PEARL BUCHANAN	Sponsor
DELMAR DALTON	President
JOSEPH MECCIA	Vice-President
MARY EDNA KING	Secretary
JOSEPH GUSWEILER, JR.	Treasurer
ARTHUR LUND	Sergeant-At-Arms

MEMBERS

Anna Arrasmith	Lewis Estes	Virgil McGlamery
Grace Adams	Joseph Gusweiler, Jr.	Joseph Meccia
Mrs. Ethel Beatty	Mary Edna King	Edwin Reynolds
Florence Champion	Astor Ledford	Roy Teague
Daisy Chestnut	Arthur Lund	William Wall
Delmar Dalton	Hermann Maggard	Brown Lee Yates

The Eastern Parliamentary Society was organized by students of the Public Speaking Class. Its purpose is two-fold: namely, to promote an interest in parliamentary procedures on the campus, and to provide practical usage of parliamentary methods.





KAPPA DELTA PI

Kappa Delta Pi is an international honor society in education. From its beginning as a small education club under the sponsorship of William C. Bagley at the University of Illinois in 1908, it has grown to include 103 institutional chapters throughout the United States. Delta Alpha chapter was installed May 5, 1935.

The society aims to promote among students an interest in education as a science; to foster high standards of preparation for teaching, and to encourage scholarship and recognize outstanding service in the field of education. Membership is by invitation and is limited to those students who have exhibited unusual scholarship and leadership.

Officers: President, Daily R. Turner; Vice-President, Martha Culton; Recorder-Treasurer, Melva Walker; Historian, Anna A. Schnieh; Reporter, Bessie Henry; Counsellor, M. E. Mattox. Other members at Eastern this year: Sam C. Beckley, Lucille Bond, Mary L. Adams, Harold Kelly Clore, James H. Drake, Wilson Gabbard, Sally Kimbler, Helen Kiser, Eliza Hanson, Herschel Roberts, W. C. Jones, Keith O. Dicken, Mary K. Kalb, Naomi M. Kalb, Evelyn Newell, Nannie Estridge, Louise Kendall, Cecil Purdom, Clarice Turner, Rosa Yates, Katherine Halcomb.

Members of the faculty affiliated with other chapters of K. D. P. are: Allie Fowler, President H. L. Donovan, Virgil Burns, Lucille Derrick, Mary F. McKinney, William J. Moore, Ruby Rush, Fred Engle, Mrs. Mary E. Barnhill, L. G. Kennamer, Saul Houchell, Anna D. Gill, and Ellen Pugh.



PI OMEGA PI

Pi Omega Pi, national commercial teachers' honorary fraternity, is the first fraternity ever to appear on the campus of the Eastern Kentucky State Teachers College. The Alpha Beta chapter was installed by the National President and the National Organizer February 9, 1935. There are thirty chapters of the fraternity in various parts of the United States, but the chapter established at Eastern is the only one in Kentucky.

1. Active membership of Pi Omega Pi consists of those who are enrolled in college work as bona fide students who have met the following requirements:

- (a) Ten or more semester hours of college credit in commerce.
- (b) Five semester hours of college credit in education.
- (c) Superior standing in all commercial studies. (At Eastern this is interpreted to mean an average grade of at least "B.")
- (d) At least medium standing in all other college subjects. (This requirement at Eastern is a point standing of at least 1.5.)

2. Associate membership of Pi Omega Pi shall consist of those who were active members while in college and who have withdrawn from college before graduation.

3. Alumni membership of Pi Omega Pi shall consist of graduates of college who were active members while they were in college and of those who graduated before a chapter was established in their college, but who, since they attained the scholarship standards while a student, have been elected by the local chapter to membership.

4. Honorary membership in Pi Omega Pi may be conferred upon members of the commerce faculty or other persons whom the local chapter believes to be worthy of membership, who have not been students where a chapter of Pi Omega Pi exists.





UPPER CUMBERLAND CLUB

OFFICERS

RONDAL SHARP	President
BEULAH CLARK	Vice-President
NAOMI HOWARD	Secretary
HARVEY SNYDER	Treasurer
F. A. ENGEL	Sponsor

MEMBERS

Thelward Keltner	Herschel Roberts	Nancy Hubbard
Austin Carter	Jennings Tallent	Hazel Brock
Kenneth Herren	Furman Jones	Ike Hubbard
Beulah Clark	Walter Slusher	Anna Ruth Teams
Faye Benjey	Henry Hill	Fuson Smith
Willa Selvey	Anna Kelly	Christine Farris
Fred A. Engle, Jr.	Nell Stewart	Joe Gilly
F. A. Engle	Marguerite Kelly	Margaret Lawson
Sally Terry	Daisy Chestnut	Opal Ridener
Rondal Sharp	Ruby Reams	Gertrude Johnson
Robert Bryant	Addie Harmon	Edna Dunn
Jessie Johnson	Floy Young	Bertie McDaniels
Charles Farris	Lincoln Patrick	Beulah Brock
Brown Lee Slusher	Harvey Snyder	Curtis McDaniels
Hobert Mink	Elvy Roberts	Genevieve Martin
Ulysses Pace	Mary Mae Brock	Otis Mays
Paul Parsons	Kermit Nicholson	Oscoc Davidson
Katherine Wilson	William Gilbert	Clarence Gilbert
Amy Taylor	Clifford Creech	Ted Gilbert
Edna Bullock	Hiram Brock, Jr.	Jesse Miracle
Lida Eversole	Wilma Selvey	Roy Teague
Pearl Woody	Ivory Day	Harry Hatler
Albert Lawson	Hazel Allen	Ernest Snyder

The Upper Cumberland Club was established on the campus in 1928 by Professor F. A. Engle. Its foremost objective is the creation of sound attitudes of fellowship among the students of the Upper Cumberland Valley. The club is a social organization. Various functions of a social nature are sponsored by the club each year. Membership in the club is composed of students from the Upper Cumberland Valley.



PHYSICAL EDUCATION CLUB

The Physical Education Club is one of the most active professional organizations at Eastern. Membership in the club is limited to majors and minors in that field and to the faculty members of the Health and Physical Education Department.

The organization has three specific objectives: first, to create a further interest in Health and Physical Education; second, to perpetuate a health consciousness among members of the club; and third, to enlighten members as to the present trends in Health and Physical Education.

It is believed that in this way the ideals of the organization may be extended to the various communities in which majors and minors will soon be teaching.

OFFICERS

FUSON SMITH	President
EDMOND T. HESSER	Vice-President
MAYME HAMILTON	Sec.-Treas.
ELIZA HUGHES	Sponsor

MEMBERS

Edgar McConnel	Mildred Abrams	Woodrow Lyday
Alex Wallace	Melva Walker	Charles Brvant
Mayme Hamilton	Joe Hedges	Roy Pille
Eleanor Luginbuhl	Robert Mavity	Fuson Smith
Ruth Perry	Otwell Rankin	Edmond Hessor
Eliza Hughes	Jack Cummins	Richard Greenwell
Evelyn Long	R. D. Lacy	J. B. Seearce





MEN'S GLEE CLUB

MARSHALL NEYPresident
 NORBERT RECHTINVice-President

Edwin Barnes
 Leonard Benton
 Charles Billerman
 Harold Gross
 W. R. Hanshaw
 Edmond T. Hesser
 Norb Rechtin
 Estile Swan
 Joseph Greenwell
 James Hart

James Heare
 Clayton Lucas
 Joe Meccia
 Don Michelson
 Marshall Ney
 Lee Poynter
 Bennett Rose
 Ruford Tipton
 J. D. Tolbert
 Bill Bennett

Thomas Bonny
 Gano Caywood
 Lon S. Dorsey
 Richard Evans
 Henry Hughes
 Teddy Gilbert
 Walter Holton
 W. C. Hensley
 Gordon Nash
 Raymond Stivers





MADRIGAL CLUB

LOUISE HUGHES	President
MARTHA SUDDUTH	Vice-President
VIRGINIA BOHN	Secretary
NANCY COVINGTON	Treasurer
MARY MURPHY	Director

Mary L. Smith
 Jane Olive Hendren
 Alma Best
 Geraldine Allen
 Virginia Arnold
 Virginia Bohn
 Beulah Clarke
 Iris Cotton
 Nancy Covington
 Margaret Culton
 Helen Gaines
 Carlos Hale
 Mayme Hamilton
 Oral Henshaw

Roberta Carrier
 Louise Hughes
 Mary C. Kalb
 Naomi Kalb
 Lucille Lawton
 Hilda Myers
 Catherine Lowe
 Margaret Neale
 Gladise Owens
 Della Pointer
 Lella Pointer
 Norma Garrett
 Hazel Powell

Katherine Prather
 Alma Reece
 Marie Reynolds
 Elizabeth Robertson
 Mildred Richardson
 Helen Schorle
 Martha Sudduth
 Mary Lilyon Smith
 Gwladys West
 Kathryn Wilkins
 Ann Edwards
 Jane Coats
 Inez Brandenburg





DORMITORY STUDENT COUNCIL

1935-1936

RUTH MARIE HERRELL, Chairman

Ann Edwards
Mary Edna King
Marion Cornett
Katherine Miracle
Anna Lee Hughes

Katheryn Campbell
Helen Howell
Mabel Herren
Ruth Marie Herrell

Hazel Carter
Carrie Wilson
Eloise Balz
Mattie Lou McKinney
Evelyn Edmunds

The Dormitory Student Council is an organization that acts more or less as a unit of student government. It is composed of women living in Burnam Hall and Sullivan Hall and has as its purpose the promoting of good will among the women who live in the two dormitories.

The members of the council are appointed by the Dean of Women at the beginning of the school year. They are women who are interested in their work and accept no salary for what they do. Their chief interest is to assist the women residents in making their dormitories lovely places in which to live.





HOME ECONOMICS CLUB

OFFICERS

RUTH DIX	Sponsor
RENA ALLEY STEWART	President
OVA ASBURY	Vice-President
EDITH HENSLEY	Secretary-Treasurer
NAOMI GRITTON	Club Reporter

This club, as well as all others, has ideals which it upholds. It extends a hand of friendship, not only to its members, but to all those who are interested in better homes for the future. Its aim is to make young women realize how closely associated health is to wholesome recreation. Our manners, our dress, and even our thoughts are influenced by the comradeship which we gain through our association with each other.

Our motto: "Service for all, and not for the individual."





THE EASTERN ART CLUB

DORD E. FITZ	President
PEARL HENDREN	Secretary
STEVE EDWARDS	Vice-President
MISS MEBANE	Faculty Sponsor

The Eastern Art Club was organized in October, 1935, with a total membership of twenty members. Due to the varied activities of the club, it has been recognized as one of the outstanding organizations on the campus, and has likewise become one of the largest. At present the Eastern Art Club is made up of eighty-two enthusiastic students.

It has been said that the great purpose of nature is to create beauty. The purpose of the Eastern Art Club is to point out and emphasize that beauty which is so much a part of our every-day life.





ELEMENTARY COUNCIL

ROSA McNEILE President
 RUTH GERMAN Vice-President
 KATE PADGETT Secretary-Treasurer
 HERSCHEL OWENS Chairman Membership Committee
 KATHRYN WILKINS Publicity Agent

Betsy Anderson
 Laura Arnold
 Virginia Ruth Arnold
 Bessie Baumgardner
 Carola Berlepp
 Alma Best
 Nicolas Brewer
 Edward Campbell
 Theda Campbell
 Ruth Carr
 Inez Cass
 Nancy Covington
 Estile Davidson
 Lorena Estridge
 Eilcen Fight
 Louise Flege
 Naomi Foster
 Marguarite Gentry
 Ferne Gibson

Ruth German
 Ethel Haddix
 Marian Hagan
 Elizabeth Haley
 May C. Hansen
 Bessie Henry
 Mary K. Holcomb
 Emma Holtzclaw
 Helen Howell
 Furman Jones
 Inez Jordan
 Grace Kincaid
 Mary Edna King
 Helen Kiser
 Louise Larkin
 Lucille Lawton
 Edith Lemaster
 Nellie Lusk
 Edna McHargue

Rosa McNeill
 Hilda Myers
 Mary Graham Miller
 Jesse Turley Moores
 Joe Noe
 Reba Noe
 Marzella Northeutt
 Herschel Owens
 Kate Padgett
 Ruth Perry
 Molly Mae Rogers
 Mary Lillian Smith
 Mary Lynn Stibbins
 Nell Stewart
 Lorinne Stigall
 John Thomas
 Earnestine Thorn
 Dorothy Thornton
 Kathryn Wilkins





NORTHERN KENTUCKY CLUB

NORBERT RECHTINPresident
 OTWELL RANKINVice-President
 ROSA McNEILLSec. & Treas.

Edith Allington
 Maurice Bailey
 H. P. Baker
 Kathryn T. Baker
 Eloise Balz
 Harold Barlow
 William Bennett
 Charles Billerman
 Byrl Boggs
 Virginia Bohn
 Mary Jane Buckley
 Dorothy M. Burk

Helen G. Carder
 Kelly Clore
 Paul DeMoisey
 Glenn DeWald
 Keith Dicken
 Lon Dorsey
 Herman Douglas
 Edward Eicher
 Elizabeth Eifert
 Herbert Erl
 Clifford Eubank

Eileen Fight
 Kathryn Folmer
 Helen Gardiner
 Ruth German
 Raymond Godsey
 Mary Gould
 Harold Graham
 Joseph Gusweiler
 James Hart
 Robert Hatter
 Charles Headley
 Joyce Hermann





THE BAND

HAROLD RIGBY	President
NANCY COVINGTON	Sponsor
JAMES E. VAN PEURSEM	Director
NORMAN LEE	Drum Major

Betsy Anderson
Dorothy Baxter
Edith Baxter
Mary Elnor Black
Joe Blunchi
Thomas Bonny
Dorothy Brock
Donovan Burrus
Morris Creech
Mary Lois Clark
Margaret Culton
Dan Denny
Peggy Denny
Glenn DeWald

Edward Eicher
Nelson Elder
Alvin Emerson
Richard Evans
Thomas Farris
Jack Fife
Clarence Gilbert
Jake Greenwell
Kennith Herron
Walter Holton
Mary Jo Leeds
Edward Mavity
Joe Mitchell
Gordon Nash

Harold Owen
Jimmy Pickett
Elry Roberts
Bennett Rose
George Scharf
Mary Smith
Raymond Stivers
Martha Sudduth
Estill Swan
Jean Willis
Sam Wise
Thelward Keltner
Ruth Walker
Edwin Pierson





BAPTIST STUDENT UNION

MEMBERS

The Baptist Student Union was organized on Eastern's campus in 1928, and has been in operation continuously since that time. The work has been under the direction of a student worker supported by the denomination since 1932, and for the past three years has been declared First Magnitude according to the standards of the Southern Baptist Department of Student Work. The executive council is composed of the heads of the various unit organizations of the Baptist Student Union with the pastor of the local church, a faculty adviser, and the student worker. The purpose of the union is to serve as a connecting link for the students between the college and the church. Membership is voluntary and may be obtained by enrolling in any activity of a local Baptist church.

Kenneth Herren
Mrs. C. L. Breland
F. A. Engle
Harry Hatler
Edmond Hesser
Beulah Clark
Wilson Durr

Chester Durham
Kelly Clore
June Redding
Roberta Carrier
Dorothy Thornton
Lee Moss
Austen Harrod

Rondal Sharp
Agnes Edmunds
Edith Hensley
Vera Wilburn
Nella Bailey
Annalee Hughes
Delbert Partin

JEFFERSON, OLDHAM, SHELBY CLUB

RICHARD "PUSS" GREENWELL.....President
 SAM BECKLEYSponsor
 CHARLES A. KEITH.....Sponsor

William E. Amyx
 Wilson T. Ashby
 Marry Agnes Bohn
 Charles Lee Davis
 Joseph Casper Greenwell
 Richard I. Greenwell

Mrs. Elizabeth R. Haley
 Frances Louise Hanna
 Austis S. Harrod
 Nancy Evelyn Long
 Pauline Pulliam
 Elizabeth F. Robertson

J. B. Searce, Jr.
 James L. Sheetz
 Vera Catherine Wilborn
 Adriel Newton Williams
 Victoria I. Yates
 Dorothy Crews





LIBRARY STAFF

MISS MARY FLOYDLibrarian
 MISS ISABEL BENNETAssistant Librarian in
 Charge of Circulation
 MRS. LUCILLE WHITEHEADAssistant Librarian
 in Charge of Reference Room
 MISS FRANCES MASONAssistant Librarian in
 Charge of Training School Library

Every day throughout the school year the library staff, in aiding students in their work, handles hundreds of books and magazines. In order to be of the greatest benefit to the student body it is necessary that the staff of student assistants be well selected. The aim of the librarians and assistants is to render courteous and efficient service at all times.

Bernard Wilson	Betsy Anderson
Katherine Folmer	Ella Ray Hastie
Maude Louise Lindley	Tommy Scott
Wilma Bond	Helen Schorle
Leo Moss	Lee Poynter
Mary Katherine Kalb	Daily Turner
Gertrude Johnson	Mary E. Denny
Pauline Pulliam	Emily Wiggins
James Rodgers	James H. Drake
Hiram Brock	Katherine Campbell
Fred Mayes	Willis Throckmorton
Agnes Edmunds	Ernest Thomas
Harry Hatler	



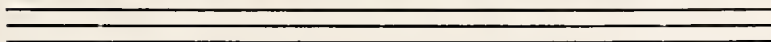
AUNT JANE OF KENTUCKY

There once lived an angel in a garden; a happy-go-lucky angel with shabby wings. And her garden was just a common garden such as you might find anywhere. Yet for all that it was a wonderful garden because the angel lived there.

When the earth lay oppressed in darkness to this garden the villagers came and partook of the warmth of the angel and nestled under her wings.

Many were the men who stopped to marvel at the queer old place yet not one has ever guessed that it held an angel's face. That it held a shining angel with her shabby wings unfurled was a secret to the stranger passing through the world, for he never dreamed a palace could be a sordid place, and he never dreamed an angel could have a dirty face.





"PARTRIDGE"

Highest Quality

Ham

Bacon

Lard

Sausage

**THE H. H. MEYER
PACKING CO.**

Cincinnati, Ohio

**UNITED
DEPARTMENT
STORES**

Smart Styles

24 Hours From Broadway

We Welcome The
Opportunity to Serve
The Faculty and
Student Body
of Eastern

**MADISON-SOUTHERN
NATIONAL BANK & TRUST
COMPANY**

Richmond, Kentucky

Compliments of
IDEAL CAFE

Strictly Home Cooking

Eat With
Nancy & Harry

Phone 1168
SECOND STREET

Patronize the
Eastern Barber Shop
(Center McKee Block)

We Combine
Lower Prices and Quality Service

HOWARD BROS., Props.

Compliments of
The Racket Store

Dealer in
China, Glassware and
Gifts for the Family

108 W. Main

STATE BANK
AND
TRUST COMPANY

Richmond, Kentucky

Compliments of

**BOGGS
BARBER SHOP**

and

Beauty Parlor

Everything New and Modern

See us for a Permanent

MRS. D. L. MCODY, Mgr. Beauty Shop

Phone 416

H. M. Whittington

Jeweler

"Gifts that Last"

North Second St.

Richmond, Kentucky

Phone 756

Compliments of

Terrill's Restaurant

A Good Place to Eat

West Main Street

Richmond, Kentucky

Compliments of

**CORNETT'S
DRUG STORE**

East Main Street

Richmond, Kentucky

Phone 19

**THE COLLEGE
BOOK STORE**

*Owned and Operated by
the Institution*

Books, Stationery

Sheaffer Fountain Pens

Official Emblem Jewelry

*Special Orders Made for Students
for Articles Not Carried
in Stock*

Compliments of

MADISON THEATRE

MR. and MRS. ROBERT BURNETTE

Students Always Welcome

Richmond, Kentucky

Compliments of

LERMAN BROS.

Cash Department Stores

KNOWN FOR BETTER VALUES

**BURNAM
&
HARBER**

"The first floor Insurance Agency"

McKee Building
Richmond, Kentucky

Phone 186

SAM P. BURNAM
W. OVERTON HARBER

**MARCUM'S
Billiard Parlor**

Clean Recreation
Under Favorable Conditions

Delicious Sandwiches

All Drinks Cooled by
Electric Refrigeration

*Cigars, Cigarettes
Candy*

Compliments of

KENTUCKY ICE CREAM

*Made Its Way
By the Way It's Made*

Phone 420

Richmond, Kentucky

Compliments

F. W. WOOLWORTH COMPANY

5 & 10c STORE

Richmond, Kentucky

Doc's Place

A Better Place for
Home Cooked Foods

Quick, Courteous Service

(Opposite Court House)

Owen McKee

Quality Merchandise

Archer, Gordon, and
Quaker Hosiery

Phone 60

Join Your Student Friends

At

SHORT'S CAFE

and

Enjoy Its Pleasing

Hospitality and Service

BEGLEY'S DRUG STORE

Parker Pens

School Supplies

Nunnally's Candy

*Fountain Service
and
Luncheonette*

Richmond, Kentucky

Phone 142

Rice & Arnold Co.

Incorporated

Clothing Specialists

Shoes, Hats and Men's Furnishings

214 W. Main St. Phone 118

Richmond, Kentucky

Joe's Delicatessen

Full Line of Good Things for
Lunches and Parties

Restaurant and Soda Fountain

Phone 58 Richmond, Ky.

Compliments of

Arnold, Hamilton & Dykes

Wholesale Grocers

Richmond, Ky. Phone 18

Madison Laundry & Dry Cleaners

Special Attention to
Parcel Post
Cleaning and Laundry

Phone 352

BRYAN-HUNT CO.

Incorporated

Wholesale Grocers

WE CARRY A COMPLETE

STOCK OF

INSTITUTIONAL GOODS

Telephone 2016

Lexington, Kentucky

Compliments

of

STOCKTON & SON

*Kodaks, Drugs,
School Supplies*

Richmond, Kentucky



IT'S "TOPS"

Sold by

RADIO LAB

W. Main St. Richmond, Ky.

Compliments

BLOOMFIELD'S

228 Main Street

E. V. ELDER

Established 1893

RICHMOND, KENTUCKY

Richmond's Leading Department Store

Nationally Advertised Lines

FOR MEN

FOR WOMEN

Hyde Park

Parkmoore Coats

Griffon

Wayne-Maid

Clothes

Dresses

Arrow Shirts

Wear-Plus

Hosiery

Florsheim

Red-Cross

Friendly

Vanity

Shoes

Footwear

Complete Dry Goods Department

SHOP AT ELDER'S AND SAVE

GLYNDON HOTEL

HEADQUARTERS

Rotary Club
Exchange Club
Lions Club
Chamber of Commerce
and
Official A. A. A.

The Home Folks Know

T. H. Collins, Manager

VISIT THE
COLLEGE BOOK STORE
for

MONTAG'S

Loose Leaf Fillers

Notebooks Stationery

and other

School Supplies

H. W. NOLAND

COAL

FEED

SEED

Building, Material

E. Main St

Phone 57

Richmond, Kentucky

ROBINSON & TURLEY

ACME PAINT

GREY GOOSE COAL

DOMINO FEEDS

Seeds, Building Material

Whse. and Yds.

Phone 113

Estill Ave.

Madison Grocery Company

Wholesale Groceries

*We Carry Stock of Staple
and Fancy Groceries*

Phone 116

Richmond, Kentucky

*WE TRY--We know it
WE SUCCEED--You know it*

We try to have the things our friends want, when they want them. "Try at Stanifer's first" has come to be a by-word in Richmond and it reflects the confidence our friends have in the good taste, the good style and the Hi-Q(uality) of our apparel.

*"Better, Because They're Built
That Way"*

MEN'S WEAR, WOMEN'S SHOES

STANIFER'S

"Just a Step Ahead in Style"
Main at Second Richmond, Ky.

GLYNDON NEWS STAND

D. T. TUSSEY, PROP

*Magazines and newspapers for
the student*

STUDENTS VISIT
TODD'S PLACE
(Opposite Memorial Hall)

for

Drinks, Cigarettes
Candy and Sandwiches

*(We Welcome an Opportunity to
Service Your Car)*

Compliments of
**J. J. NEWBERRY
COMPANY**

Quality Merchandise

at

Economy Prices



MAKE 'EM BALANCE!

Whatever goes out
Must first come in.
That's where lessons
In thrift begin!

Don't spend money
Before you earn it.
The lesson is simple,
Be sure you learn it!

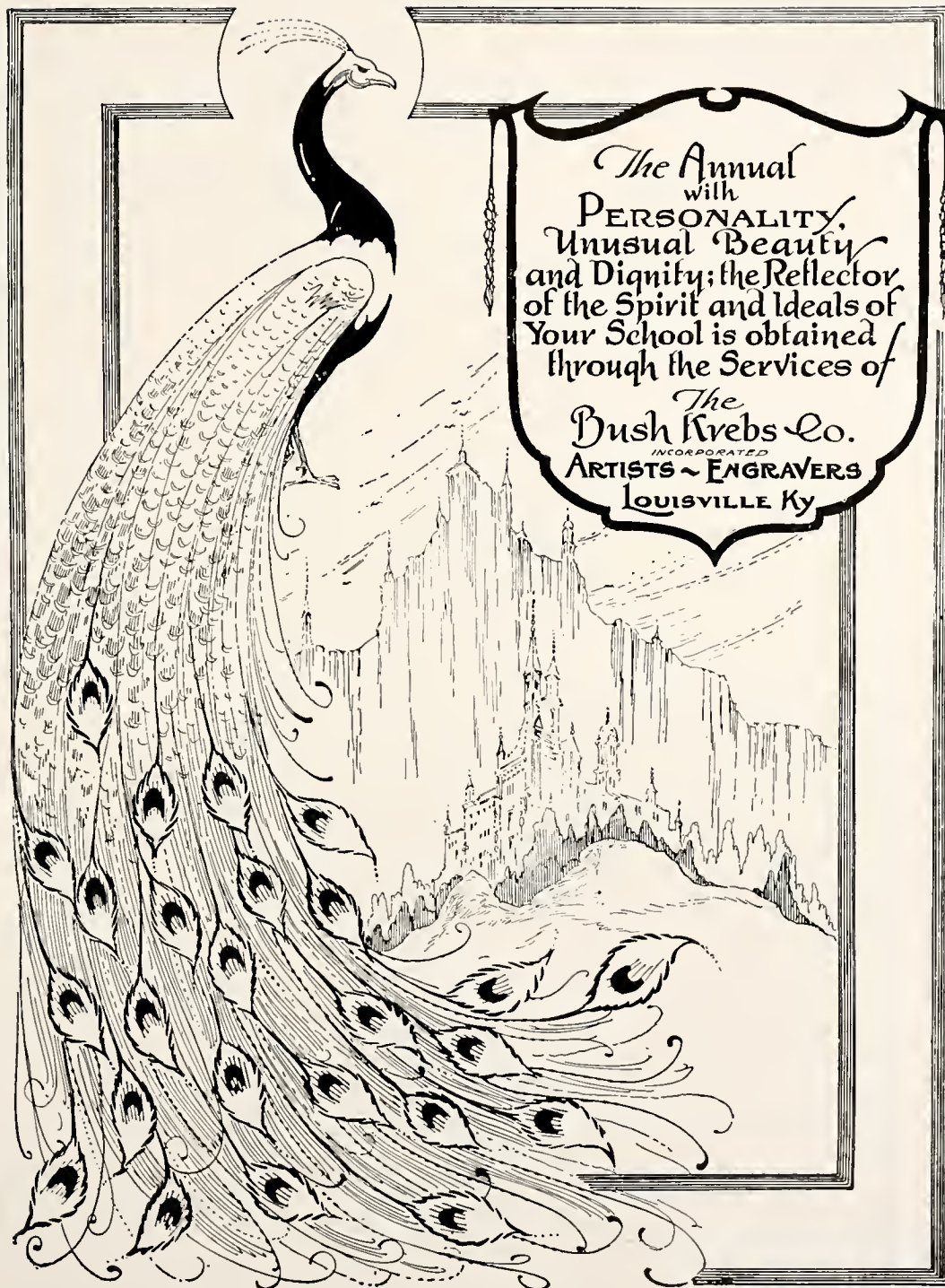
Budget your income
And stretch it far.
Pay cash at Penney's
Where bargains are!

J. C. PENNEY CO.
INCORPORATED

McGaughey's Studio

SINCE the beauty of an annual depends largely upon the quality of the photographs used, the Milestone Staff realize that a great part of whatever recognition this book merits should go to the McGaughey Studio. On the basis of satisfactory and efficient service, we recommend this studio to future Milestone Staffs.

Duplicates from any picture that appears in this annual may be had by calling or writing the McGaughey Studio at Richmond, Ky.



The Annual
with
PERSONALITY.
Unusual Beauty
and Dignity; the Reflector
of the Spirit and Ideals of
Your School is obtained
through the Services of

The
Bush Krebs Co.
INCORPORATED
ARTISTS ~ ENGRAVERS
LOUISVILLE Ky



BEAUTY

"THE SOUTH'S BEST
ANNUAL PRINTERS"

Delights and Charms you in Fetter annuals, welcoming you to the pages, giving distinction to your book. And it typifies the Fetter spirit . . . a spirit of helpfulness and pleasure in working with you year after year to produce better annuals.

GEO. G. FETTER COMPANY
INCORPORATED

410-412-414 West Main Street, Louisville, Kentucky

DIRECTORY

A

Abney, Pearl (Special) Mt. Vernon, Ky.
 Abrams, Burnace Edna (Soph.) Clover Bottom, Ky.
 Abrams, Mildred Frances (Junior) Richmond, Ky.
 Acree, Opal (Senior) Corinth, Ky.
 Adams, Ernest (Junior) Lancaster, Ky.
 Adams, Grace (Soph.) Stacy Fork, Ky.
 Adams, Gurney (Senior) Carr Creek, Ky.
 Adams, Lundy (Soph.) Crown, Ky.
 Adams, Mary Edith (Senior) Richmond, Ky.
 Adams, Shefton Shelby (Soph.) Pine Ridge, Ky.
 Adams, William E. (Fresh.) Richmond, Ky.
 Akers, Ople Ann (Fresh.) Lynch, Ky.
 Albright, Guy (Soph.) Brodhead, Ky.
 Allen, Edith Phillips (Senior) Covington, Ky.
 Allen, Geraldine (Soph.) Prestonsburg, Ky.
 Allen, Hazel (Soph.) Weaver, Ky.
 Allen, Ollie James (Junior) Clayhole, Ky.
 Allen, Ora Lee (Junior) Hueysville, Ky.
 Allen, Samuel (Soph.) Salyersville, Ky.
 Allen, Theodore Roosevelt, (Junior) Royalton, Ky.
 Allen, Mrs. T. R. (Soph.) Royalton, Ky.
 Alley, James R. (Fresh.) Borderland, Ky.
 Allington, Edith (Junior) Newport, Ky.
 Amerine, Jennings B. (Junior) Ravenna, Ky.
 Ammerman, Elizabeth Lee (Fresh.) Shawhan, Ky.
 Ammerman, James Kenneth (Fresh.) Falmouth, Ky.
 Amyx, William Edward (Fresh.) Shelbyville, Ky.
 Anderson, Betsy Richards (Junior) Shawhan, Ky.
 Applegate, Bonnie Jeanne (Soph.) Ashland, Ky.
 Arbuckle, John Marshall (Fresh.) Richmond, Ky.
 Arnold, Virginia Ruth (Junior) Dry Ridge, Ky.
 Arrasmith, Anna Ware (Senior) Bethel, Ky.
 Arrasmith, Ewell Roberts (Fresh.) Bethel, Ky.
 Arrington, Bess C. (Soph.) Blaine, Ky.
 Arrington, Hudson (Soph.) Blaine, Ky.
 Asberry, Lena (Soph.) Windy, Ky.
 Asberry, Leta (Fresh.) Windy, Ky.
 Asbury, Ova (Junior) Kenvir, Ky.
 Ash, C. R. (Senior) Willisburg, Ky.
 Ashby, William Thomas (Fresh.) Shelbyville, Ky.
 Ashcraft, Ohna (Soph.) Richmond, Ky.
 Atkinson, Julian E. (Soph.) Carlisle, Ky.

B

Bach, Alma Elizabeth (Soph.) Jackson, Ky.
 Bailey, Joy (Soph.) Richmond, Ky.
 Bailey, Lewis (Soph.) Leroose, Ky.
 Bailey, Maurice Edwin (Fresh.) Covington, Ky.

Bailey, Nella Mae (Fresh.) Salyersville, Ky.
 Bailey, Willia Carroll (Fresh.) Burgin, Ky.
 Baker, Clarence Dow (Junior) Holbrook, Ky.
 Baker, H. P. (Senior) Walton, Ky.
 Baker, Homer (Fresh.) Dreyfus, Ky.
 Baker, Kathryn T. (Graduate) Walton, Ky.
 Baker, Oral (Junior) Booneville, Ky.
 Baker, Squire (Soph.) Oneida, Ky.
 Baker, Tommy (Fresh.) W. Irvine, Ky.
 Balden, Louise Sadie (Junior) Harrodsburg, Ky.
 Ballard, Vivian D. (Fresh.) Ravenna, Ky.
 Ballengee, Emma Thomas (Fresh.) Paris, Ky.
 Balz, Eloise Edna (Fresh.) Covington, Ky.
 Barbe, Cherry Earline (Fresh.) Richmond, Ky.
 Barber, Wilbur (Soph.) Switzer, Ky.
 Barclay, Josephine (Fresh.) Red House, Ky.
 Barker, Bruce Wilson (Junior) Travelers Rest, Ky.
 Barlow, Harold Robert (Fresh.) Union, Ky.
 Barnes, Edwin Wilson (Soph.) Richmond, Ky.
 Barnett, Dove (Senior) Portsmouth, Ky.
 Barnett, Nancy (Junior) Columbia, Ky.
 Barrett, Garnet Viola (Junior) Pikeville, Ky.
 Baxter, Sidney Reed (Fresh.) Alton Station, Ky.
 Bays, Herbert (Soph.) Sandy Hook, Ky.
 Beatty, Mable Lutes (Fresh.) Beattyville, Ky.
 Beatty, Para E. (Soph.) Sand Gap, Ky.
 Beauchamp, Constance (Junior) Columbia, Ky.
 Becknell, William Edward (Junior) Booneville, Ky.
 Beckner, Helen (Fresh.) Harlan, Ky.
 Begley, Glenna Mae (Senior) Middlesboro, Ky.
 Belle, Milton Andrew (Senior) London, Ky.
 Benjey, Faye Maxine (Soph.) Coalgood, Ky.
 Bennett, William E. (Soph.) Covington, Ky.
 Bentley, Charles Jackson (Junior) Mt. Olivet, Ky.
 Benton, Jessie Mae (Soph.) Irvine, Ky.
 Benton, Margaret (Soph.) Richmond, Ky.
 Benton, Norman Earl (Senior) Irvine, Ky.
 Benton, Tommy Butler (Fresh.) Irvine, Ky.
 Berlepp, Carola Johanna (Soph.) Stanford, Ky.
 Bersot, Marion D. (Senior) Ghent, Ky.
 Best, Alma (Junior) Harrodsburg, Ky.
 Billerman, Charles Tutin (Fresh.) Ft. Thomas, Ky.
 Birt, Bonnie Elizabeth (Senior) Pulaski, Ky.
 Bishop, Fred Felty (Soph.) Felty, Ky.
 Black, Anna Bales (Senior Degree) Richmond, Ky.
 Black, Frank Bush (Soph.) Richmond, Ky.
 Black, T. J. (Fresh.) Richmond, Ky.
 Blackard, Samuel E. (Junior) Versailles, Ky.
 Blackburn, Charles M. (Soph.) Hardy, Ky.
 Blake, Ellen W. (Soph.) Cow Creek, Ky.
 Boggs, Byrl (Fresh.) Bellevue, Ky.
 Boggs, Ellis B. (Junior) Kings Creek, Ky.
 Bohn, Mary Agnes (Fresh.) Shelbyville, Ky.





DIRECTORY

Bohn, Virginia Anne (Soph.) Newport, Ky.
Bond, Clotille M. (Soph.) Meta, Ky.
Bond, Floy Gale (Senior) Egypt, Ky.
Bond, Lucille Leslie (Senior) Meta, Ky.
Bond, Wilma Loretta (Senior) Richmond, Ky.
Bond, Zola Cree (Senior) Egypt, Ky.
Boneta, Eulogia Carolita (Junior) Rio Piedras, Puerto Rico.
Bonny, Thomas Howard (Senior) Mt. Sterling, Ky.
Bordes, Rozella F. (Fresh.) Brodhead, Ky.
Bower, Lillian Mae (Soph.) Richmond, Ky.
Brandenburg, Effic Lois (Fresh.) Richmond, Ky.
Brandenburg, Inez (Soph.) Fox, Ky.
Brandenburg, Orveda Athaline (Fresh) Irvine, Ky.
Brashear, Virginia Lee (Junior) Berea, Ky.
Bressler, Jerome George (Fresh.) Dayton, Ky.
Brewer, George (Senior) Stanton, Ky.
Brewer, Kelley (Soph.) Stanton, Ky.
Brewer, Kermit Nicholas (Soph.) Sturgeon, Ky.
Brigmon, W. W. (Junior) Forgertown, Ky.
Brinton, Jay Olsen (Junior) Salt Lake City, Utah.
Brittain, Anna (Soph.) Gulston, Ky.
Brittain, Glades (Soph.) Tinsley, Ky.
Britton, Christine Lake (Soph.) Middlefork, Ky.
Britton, Jessie (Senior) Oncida, Ky.
Broadus, Myrtle (Special) Richmond, Ky.
Brock, Beulah Mae (Junior) Lida, Ky.
Brock, Hiram, Jr. (Fresh.) Harlan, Ky.
Brock, Mary Mae (Junior) London, Ky.
Brock, Ramsey (Fresh.) Coalgood.
Brockman, Ethel (Soph.) Sand Gap, Ky.
Brooks, David A. (Senior) Parksville, Ky.
Brown, Edgar L. (Junior) Richmond, Ky.
Brown, Henry (Fresh.) Bromo, Ky.
Brown, Lena Louise (Junior) Cattlettsburg, Ky.
Brown, Mable Marie (Soph.) Eubank, Ky.
Brown, Ruth Blackwell (Junior) Witt Springs, Ky.
Broyles, Edith Elizabeth (Fresh.) Plato, Ky.
Broyles, Occa Elizabeth (Senior) Brumfield, Ky.
Brumbach, Lora Mac (Fresh.) Harlan, Ky.
Bryant, Charles Williams (Junior) McKinney, Ky.
Bryant, Geneva C. (Mrs.) (Junior) McKinney, Ky.
Bryant, James T. (Senior) McKinney, Ky.
Bryant, Robert Elmer (Special) Sumner, Ky.
Buckley, Jane Mary (Fresh.) Covington, Ky.
Bullock, Edna K. (Senior) Pittsburg, Ky.
Burgess, Doris Lynn (Fresh.) Paint Lick, Ky.
Burk, Dorothy Ann (Fresh.) Covington, Ky.
Burnam, Florence K. (Senior Degree) Richmond, Ky.

Burrus, Frances B. (Fresh.) Million, Ky.
Burton, Charles Calvin (Junior) Blaine, Ky.
Burton, Mildred Opal (Fresh.) Hummel, Ky.
Burton, Nell Jacqueline (Junior) Stacy Fork, Ky.
Buser, Louetta Elizabeth (Junior) Bradford, Ky.
Bush, Philip (Fresh.) Ravenna, Ky.

C

Cable, Mildred Thomas (Soph.) Fincastle, Ky.
Caldwell, F. Reed (Senior) Owenton, Ky.
Caldwell, James Franklin (Soph.) Loyall, Ky.
Callihan, Orpha R. (Senior) W. Irvine, Ky.
Calvert, Naomi Mae (Junior) Rileys, Ky.
Cammack, Edward Jackson (Fresh.) Owenton, Ky.
Campbell, Daniel Edward (Junior) Booneville, Ky.
Campbell, Elizabeth (Fresh.) Standford, Ky.
Campbell, Ida Bolin (Junior) Inhoopflorea, Ky.
Campbell, Kash (Junior) Hardshell, Ky.
Campbell, Kathryn Ruse (Junior) Stanford, Ky.
Campbell, Kearney (Fresh.) Taylorsville, Ky.
Campbell, Raleigh Chester (Junior) Busy, Ky.
Campbell, Theda Gladys (Soph.) Four Miles, Ky.
Canter, Richard Lee (Fresh.) Richmond, Ky.
Carder, Helen G. (Soph.) Ludlow, Ky.
Carr, Ruth (Soph.) Panola, Ky.
Carrell, George H. (Senior) Louisville, Ky.
Carrier, Roberta (Soph.) Middleburg, Ky.
Carter, Austin (Fresh.) Corbin, Ky.
Carter, Georgina (Soph.) Falmouth, Ky.
Carter, Hazel Lois (Soph.) Moreland, Ky.
Cass, Jane Young (Fresh.) Richmond, Ky.
Case, Lucille (Senior) Richmond, Ky.
Cass, Inez (Soph.) Brodhead, Ky.
Caudill, Arla (Soph.) Odds, Ky.
Caudill, Mrs. Frances W. (Soph.) Odds, Ky.
Cawood, Lenarue (Soph.) Harlan, Ky.
Caywood, Gano Dudley (Senior) Versailles, Ky.
Champion, M. Florence (Junior) Bondville, Ky.
Chestnut, Daisy (Senior) Oakley, Ky.
Childs, Russell McKee (Soph.) Falmouth, Ky.
Chitwood, Mary Elizabeth (Special) Whitley City, Ky.
Clark, Beulah Elizabeth (Soph.) Corbin, Ky.
Clark, Letha (Junior) Auxier, Ky.
Clark, Mary Lois (Soph.) Richmond, Ky.
Clark, Vernon (Soph.) Mt. Vernon, Ky.
Clarke, Mary Elizabeth (Soph.) Auxier, Ky.
Clay, Clarence Cassius (Fresh.) Catlettsborg, Ky.
Clore, Harold Kelly (Junior) Burlington, Ky.
Clore, Zayda Kendall (Soph.) Walton, Ky.
Cocanougher, Frances (Soph.) Danville, Ky.

DIRECTORY

Cockerham, Hannah (Fresh.) Beattyville, Ky.
 Colley, Lois L. (Soph.) Richmond, Ky.
 Collins, Bazel (Fresh.) Harlan, Ky.
 Collins, Elizabeth (Junior) Richmond, Ky.
 Collins, J. Richman (Junior) Maysville, Ky.
 Collins, Mary Ann (Soph.) Richmond, Ky.
 Collins, Orlena Frances (Junior) Elkatawa, Ky.
 Congleton, J. Barbara (Junior) Richmond, Ky.
 Conley, Susan Clarke (Fresh.) Cliff, Ky.
 Conrad, Orman (Fresh.) Falmouth, Ky.
 Cook, Sherman Martub (Junior) Richmond, Ky.
 Cooksey, Alpha Barbara (Fresh.) Cornishville, Ky.
 Cooper, Teresa (Junior) Lebanon, Ky.
 Corder, Martha Jane (Fresh.) Monticello, Ky.
 Cornelison, Owen Powell (Fresh.) Richmond, Ky.
 Cornelius, Ada Belle (Soph.) Mershons, Ky.
 Cornett, Charles Estell (Junior) Brock, Ky.
 Cornett, Dolphus (Soph.) Datha, Ky.
 Cornett, Elvira (Fresh.) Booneville, Ky.
 Cornett, Marion (Senior) Larue, Ky.
 Cornett, Mike Hurst (Junior) Booneville, Ky.
 Cornett, Susie Lou (Soph.) Larue, Ky.
 Cotton, Iris Jean (Soph.) Richmond, Ky.
 Cotton, Joyce (Fresh.) Richmond, Ky.
 Cotton, Margaret (Fresh.) Kirksville, Ky.
 Covington, Nancy Cunningham (Junior) Richmond, Ky.
 Cox, Charles B. (Fresh.) Mt. Vernon, Ky.
 Cox, Cleona Spicer (Fresh.) Willow, Ky.
 Cox, Hubert Lee (Fresh.) Irvine, Ky.
 Cox, Lillian (Junior) Richmond, Ky.
 Cox, Mary Rice (Soph.) Rice Station, Ky.
 Coyer, Mary (Senior) Prestonsburg, Ky.
 Coyle, Alvis Newton (Junior) Foxtown, Ky.
 Coyle, Elmer Allen, Foxtown, Ky.
 Crace, Winford Whitt (Fresh.) Richmond, Ky.
 Craig, Louise (Fresh.) Ghent, Ky.
 Craig, Margaret (Junior) Ghent, Ky.
 Creech, Alberta M. (Fresh.) Brock, Ky.
 Creech, Clifford Lee (Junior) Pineville, Ky.
 Creech, Elmer (Soph.) Fogertown, Ky.
 Creech, Florence Blair (Special) Paint Lick, Ky.
 Creech, Robert Morris (Senior) Richmond, Ky.
 Crews, Dorothy (Senior) Shelbyville, Ky.
 Crews, Georgetta (Soph.) Lancaster, Ky.
 Crider, Verna (Junior) Liggett, Ky.
 Cromer, John H. (Junior) London, Ky.
 Cross, Mellie Frances (Soph.) Junction City, Ky.
 Culton, Margaret Louise (Fresh.) Richmond, Ky.
 Cummins, Jack Waddell (Soph.) Pikeville, Ky.
 Cunagin, David Hurley (Soph.) Berea, Ky.
 Cundiff, Kathryn Virginia (Senior) Irvine, Ky.

Cundiff, Marke (Soph.) Somerset, Ky.
 Cunningham, Elmer W. (Junior) Switzer, Ky.
 Cupp, Carl Franklin (Fresh.) Highsplint, Ky.

D

Dailey, Mary Alene (Fresh.) Mt. Vernon, Ky.
 Dalton, Delmar J. (Soph.) Powersburg, Ky.
 Dalton, Mrs. Oakley (Soph.) Powersburg, Ky.
 Damron, Thelma June (Fresh.) Escro, Ky.
 Dann, Jack Carl (Fresh.) McRoberts, Ky.
 Daugherty, Leonard (Junior) Freeburn, Ky.
 Daugherty, Shoff Owen (Junior) Monticello, Ky.
 Davidson, Estill (Soph.) Annville, Ky.
 Davidson, Oscoe (Fresh.) Ingram, Ky.
 Davis, Charles Lee (Fresh.) Finchville, Ky.
 Davis, Clifford (Fresh.) Corbin, Ky.
 Davis, Leroy (Fresh.) Wilmington, Ohio.
 Davis, Vernon Taylor (Junior) Paint Lick, Ky.
 Day, Ivory F. (Fresh.) Cranks, Ky.
 Day, Marion Herbert (Fresh.) Loyall, Ky.
 Deatherage, Margaret Mae (Fresh.) Richmond, Ky.
 Deaton, Burnice (Senior) Fillmore, Ky.
 Deaton, Mrs. Maurine Patrick (Senior) Salyersville, Ky.
 DeJarnette, Hattie (Junior) Richmond, Ky.
 DeJarnette, Mary Willis (Soph.) Richmond, Ky.
 Delap, Fred (Fresh.) Loyall, Ky.
 DeMoisey, Paul Barry (Junior) Walton, Ky.
 Dempsey, Alice Corinne (Fresh.) Warfield, Ky.
 Denham, Dorothy Lee (Junior) Rice Station, Ky.
 Denham, Florence Katherine (Junior) Stanford, Ky.
 Denny, Dann Wood (Fresh.) Richmond, Ky.
 Denny, Mary Eleanor (Junior) Richmond, Ky.
 Denny, Orion M. (Soph.) Winchester, Ky.
 Devore, Robert Evans (Junior) Sanders, Ky.
 Dewald, Glenn August (Fresh.) Cold Springs, Ky.
 Dicken, Keith Orton (Senior) California, Ky.
 Dicken, Mervin (Soph.) California, Ky.
 Disney, Ruth (Senior) Corbin, Ky.
 Dixon, Emil (Fresh.) Blackey, Ky.
 Dixon, Julia (Senior) Blackey, Ky.
 Dolen, Shirley Opal (Soph.) Monticello, Ky.
 Doolin, Laverne (Junior) Bryantsville, Ky.
 Dorris, Mary E. (Junior) Richmond, Ky.
 Dorsey, Alonzo (Fresh.) Bellevue, Ky.
 Dotson, Anna Rae (Junior) Bellevue, Ky.
 Douglas, Elmer (Soph.) Aberdeen, S. D.
 Douglas, Herman (Soph.) Bellevue, Ky.
 Duckwall, Christine C. (Fresh.) Lynch, Ky.
 Dudderar, Dovie Parrish (Senior) Irvine, Ky.
 Dudderar, Janet (Junior) Stanford, Ky.
 Duerson, William Robert (Junior) Paint Lick, Ky.





DIRECTORY

Dunaway, Theodore (Fresh.) Boyd, Ky.
Duncan, Finley M. (Soph.) Tateville, Ky.
Dunn, Edna Lillian (Junior) Corbin, Ky.
Durham, J. Chester (Soph.) Richmond, Ky.
Durham, Mary Lee (Junior) Rockhold, Ky.
Durr, George Wilson (Fresh.) Harrodsburg, Ky.
Dyer, Joseph Edward (Senior) Prestonsburg, Ky.
Dykes, James Hamilton (Fresh.) Richmond, Ky.

E

Edmunds, Agnes Alice (Soph.) Bristow, Ky.
Edmunds, Evelyn J. (Soph.) Bristow, Ky.
Edwards, Anna French (Soph.) Corbin, Ky.
Edwards, Frank W. (Fresh.) Richmond, Ky.
Edwards, Nancy Reva (Fresh.) Richmond, Ky.
Edwards, Stephen C. (Soph.) Richmond, Ky.
Eich, Lois May (Fresh.) Bellevue, Ky.
Eicher, Edward Elmer (Fresh.) Ft. Thomas, Ky.
Eifert, Elizabeth Katherine (Soph.) Covington, Ky.
Elder, John Emil (Fresh.) Eldorado, Ky.
Elkins, Garnet (Junior) Yatesville, Ky.
Elliott, Edith (Senior) Rice Station, Ky.
Elliott, Evelyn Mildred (Soph.) Rice Station, Ky.
Ellison, John W. (Soph.) Corbin, Ky.
Engle, Jerry M. (Soph.) Bulan, Ky.
Engle, Mattie Lee (Soph.) Berea, Ky.
Engle, Mrs. Rosa S. (Graduate) Bulan, Ky.
Erl, Herbert John (Fresh.) Dayton, Ky.
Estes, Delbert Lee (Fresh.) Science Hill, Ky.
Estes, Elizabeth Casada (Junior) Eubank, Ky.
Estes, Lewis (Junior) Eubank, Ky.
Estes, Mildred Mae (Fresh.) Science Hill, Ky.
Estridge, Burnam (Graduate) Paint Lick, Ky.
Estridge, Lorene (Soph.) Stanford, Ky.
Estridge, Lucile McWhorter (Graduate) Paint Lick, Ky.
Estridge, Nannie A. (Senior) Stanford, Ky.
Eubank, Clifford Joseph (Soph.) Covington, Ky.
Evans, Esther Ruth (Fresh.) Berea, Ky.
Eversole, Lida M. (Junior) London, Ky.
Faris, Christine E. (Junior) London, Ky.
Faris, Earl Nelson (Junior) London, Ky.
Farley, Glenmore (Fresh.) Irvine, Ky.
Farmer, Alice Sparks (Junior) McKee, Ky.
Farmer, Edyth Lee (Fresh.) Beattyville, Ky.
Farmer, Luther C. (Junior) McKee, Ky.

F

Farris Charles Leon (Soph.) Corbin, Ky.
Farris, Jacob Thomas (Senior) Richmond, Ky.
Farris, Mary Kate (Senior) Raywick, Ky.
Feinstein, Milton David (Fresh.) Barbourville, Ky.
Ferguson, Elmer D. (Soph.) Burning Springs, Ky.

Ferrill, Wilhelmina K. (Fresh.) Berea, Ky.
Fields, Herman Dewitt (Fresh.) Falmouth, Ky.
Fife, Paul (Fresh.) Richmond, Ky.
Fitz, Dord Edward (Junior) Richmond, Ky.
Flannery, Moss Wayne (Junior) Herd, Ky.
Flege, Helen Louise (Senior) Williamstown, Ky.
Fleming, Mabel (Soph.) Etty, Ky.
Folmer, Kathryn (Soph.) Independence, Ky.
Forbes, Wallace G. (Soph.) Richmond, Ky.
Ford, Mary Auxier (Soph.) Prestonsburg, Ky.
Foster, Naomi (Soph.) Russell, Ky.
Fothergill, David Edward (Soph.) Berea, Ky.
Francisco, Lela Mae (Soph.) Brodhead, Ky.
Freeman, Manual (Soph.) Ravenna, Ky.
Friend, Molly Virginia (Soph.) W. Irvine, Ky.
Frost, Graydon (Junior) Cow Creek, Ky.
Fulkerson, Heman W. (Junior) Grayson, Ky.

G

Gabbard, Edith Mae (Soph.) Booneville, Ky.
Gabbard, Wilson (Senior) Ricetown, Ky.
Gaffney, Marietta (Soph.) Lancaster, Ky.
Gaines, Helen (Fresh.) Owenton, Ky.
Galloway, Jack C. (Soph.) Richmond, Ky.
Galloway, Reed Edward (Fresh.) Pineville, Ky.
Gambill, Johnny Emery (Senior) Datha, Ky.
Gann, J. Roy (Senior) Middlesboro, Ky.
Gardiner, Helen Ruth (Junior) Fort Thomas, Ky.
Garriott, Gretchen G. (Fresh.) Lexington, Ky.
Gatliff, Ellen Katherine (Soph.) Mt. Vernon, Ky.
Gentry, Beulah C. (Fresh.) Bromo, Ky.
Gentry, Marguerite Ann (Junior) Middlesboro, Ky.
German, Ruth (Senior) Bellvue, Ky.
Gibson, Ferne O. (Senior) Booneville, Ky.
Gibson, Hugh R. (Junior) Richmond, Ky.
Gilbert, Clarence Edward (Fresh.) Lynch, Ky.
Gilbert, Russell (Soph.) Irvine, Ky.
Gilbert, Teddy Curtis (Fresh.) Pineville, Ky.
Gilbert, William G. (Soph.) Black Water, Ky.
Gilly, Joe Garland (Junior) Harlan, Ky.
Gilreath, Delmer (Soph.) Marshes Siding, Ky.
Glass, Homer Wilson (Soph.) Argillite, Ky.
Goble, Naomi (Junior) Prestonsburg, Ky.
Gooch, Mrs. Mary Edith (Junior) Lancaster, Ky.
Goodlett, H. Lloyd (Senior) Burgin, Ky.
Gould, Alveta Jeanne (Fresh.) W. Irvine, Ky.
Gould, Mary F. (Junior) Covington, Ky.
Gragg, Susan Lydia (Junior) Pineville, Ky.
Graham, Harold (Soph.) Covington, Ky.
Gray, Eva Ethel (Special) Monticello, Ky.
Gray, Martha (Junior) Cynthiana, Ky.

DIRECTORY

Green, Evelyn Hensley (Junior) Richmond, Ky.
 Greenwell, Joseph C. (Fresh.) Shelbyville, Ky.
 Greenwell, Richard I. (Senior) Shelbyville, Ky.
 Griggs, Stella Margaret (Fresh.) Cuzick, Ky.
 Gritton, Naomi N. (Soph.) Harrodsburg, Ky.
 Gusweiler, Joseph G. (Junior) Ludlow, Ky.

H

Hacker, Delona (Soph.) Oneida, Ky.
 Hacker, Jerry Lee (Fresh.) Annville, Ky.
 Haddix, Edith Jean (Soph.) Richmond, Ky.
 Hagan, Ohna Lee (Senior) Richmond, Ky.
 Hagood, William Joseph (Fresh.) Loyall, Ky.
 Hahn, Gertrude P. (Fresh.) Richmond, Ky.
 Hahn, Wickliffe H. (Fresh.) Richmond, Ky.
 Hale, Carlos M. (Junior) W. Prestonsburg, Ky.
 Hales, Donald L. (Senior) Jackson, Ky.
 Haley, Mrs. Elizabeth R. (Sophomore) Simpsonville, Ky.
 Hall, Alfred Donnelly (Junior) Manchester, Ky.
 Hall, Herman (Soph.) Moreland, Ky.
 Hamblin, James A. (Senior) Dunraven, Ky.
 Hamilton, Martha (Senior) Mt. Sterling, Ky.
 Hamilton, Mary Hayden (Fresh.) Union City, Ky.
 Hamilton, Mayme S. (Senior) Richmond, Ky.
 Hamilton, Robert C. (Fresh.) Elizabethtown, Ky.
 Hamilton, William C. (Soph.) Mt. Sterling, Ky.
 Hamm, Ruby Golden (Senior) Bryantsville, Ky.
 Hammonds, Edmond (Fresh.) Paint Lick, Ky.
 Hammonds, Ruth Allene (Fresh.) Richmond, Ky.
 Hammonds, Velma S. (Soph.) Lancaster, Ky.
 Haney, Elizabeth (Fresh.) Jackson, Ky.
 Hanger, Betty Rousseau (Junior) Richmond, Ky.
 Hanna, Frances Louise (Senior) Shelbyville, Ky.
 Hanshaw, W. R. (Junior) Russell, Ky.
 Harmon, Addie (Soph.) Youngs Creek, Ky.
 Harmon, Mrs. Judson (Junior) Richmond, Ky.
 Harris, Henry Murray (Fresh.) Richmond, Ky.
 Harrison, Lillian Marie (Fresh.) Ravenna, Ky.
 Harrison, Minnie Frances (Soph.) Maysville, Ky.
 Harrod, Austin S. (Junior) Bagdad, Ky.
 Hart, James M. (Soph.) Bellevue, Ky.
 Hastie, Ella Ray (Senior) Mt. Sterling, Ky.
 Hatler, Harry G. M., Jr. (Junior) Corbin, Ky.
 Haynes, Othniel M. (Soph.) Northfield, Ky.
 Hayre, J. G. (Fresh.) Oneida, Ky.
 Hays, Blanche (Soph.) Ary, Ky.
 Hays, Lydia Ann (Soph.) Springfield, Ky.
 Hays, Ruth (Senior) Springfield, Ky.

Headley, Fenner G. (Senior) Middlesboro, Ky.
 Heare, A. Taylor, (Soph.) Richmond, Ky.
 Heare, James Thomas (Junior) Berea, Ky.
 Hedges, Joe (Junior) Georgetown, Ky.
 Hendren, Jane Olive (Junior) Kirksville, Ky.
 Hendren, Pearl Deaver (Soph.) Harrodsburg, Ky.
 Hendrickson, Ethel George (Junior) Four Mile, Ky.
 Hendrickson, Horace W. (Fresh.) Lancaster, Ky.
 Henry, Bessie (Senior) North Middletown, Ky.
 Hensley, Henry (Fresh.) Burning Springs, Ky.
 Hensley, Edith West (Junior) Sibert, Ky.
 Hensley, Jean Bennett (Senior) Berea, Ky.
 Hensley, Omer (Senior) Oneida, Ky.
 Hensley, W. C. (Junior) Estill, Ky.
 Hermann, B. Joyce (Fresh.) Newport, Ky.
 Herndon, Nannie Rose (Soph.) Booneville, Ky.
 Herrell, Ruth Marie (Senior) Middlesboro, Ky.
 Herren, Harry Kenneth (Fresh.) Corbin, Ky.
 Herren, Mabel E. (Junior) Bradfordsville, Ky.
 Hesser, Edmond T. (Junior) Newport, Ky.
 Hignite, Don Louis (Junior) Richmond, Ky.
 Hignite, Hugh Louis (Soph.) Paint Lick, Ky.
 Hill, Edna G. (Fresh.) Germantown, Ky.
 Hill, Ella Katherine (Fresh.) Berea, Ky.
 Hill, Frank (Senior) Germantown, Ky.
 Hill, Henry (Senior) Grove, Ky.
 Hill, Kathleen Welch (Junior) Richmond, Ky.
 Hill, Walter Robert (Fresh.) Pineville, Ky.
 Hilton, Bentley Jones (Soph.) Pine Hill, Ky.
 Hilton, Ruth Cecilia (Junior) Pine Hill, Ky.
 Hines, Arthur (Soph.) Somerset, Ky.
 Hinkle, Woodrow, W. (Junior) Paris, Ky.
 Holbrook, Elizabeth Ann (Soph.) Owenton, Ky.
 Holt, Decima R. (Soph.) Big Hill, Ky.
 Holton, Walter T. (Soph.) Trinity, Ky.
 Horn, Lucile Frances (Fresh.) Harrodsburg, Ky.
 Hornaday, Helen Charlotte (Fresh.) Lebanon, Ky.
 House, H. Douglas (Fresh.) Red House, Ky.
 House, L. C. (Fresh.) Richmond, Ky.
 Howard, Estill Bernard (Fresh.) Wallins, Ky.
 Howard, Flossie Naomi (Fresh.) Wallins, Ky.
 Howard, Garrett Lance (Soph.) Pitts, Ky.
 Howard, Mary Francis (Fresh.) Wallins, Ky.
 Howard, Victor (Fresh.) Wallins, Ky.
 Howe, John Edgar (Soph.) Alexandria, Ky.
 Howell, Helen B. (Junior) Ashland, Ky.
 Hubbard, Ike Cobb (Special) Black Water, Ky.
 Hubbard, Mrs. Nancy (Soph.) Black Water, Ky.





DIRECTORY

Huber, Thelma Lulubelle (Fresh.) Maysville, Ky.

Hughes, Anna Lee (Soph.) Maysville, Ky.

Hughes, Elmo Keith (Fresh.) Richmond, Ky.

Hughes, Henry A. (Junior) Richmond, Ky.

Hughes, Jack (Senior) Frankfort, Ky.

Hughes, Louise (Senior) Richmond, Ky.

Hughes, Millie Myrtle (Fresh.) W. Prestonsburg, Ky.

Hughes, Paul (Fresh.) Ft. Thomas, Ky.

Hughes, Stella Anna (Soph.) Crystal, Ky.

Hulette, Mary Elizabeth (Soph.) Paint Lick, Ky.

Hunt, Willie E. (Junior) German, Ky.

Hunter, Anna Belle (Fresh.) Nicholasville, Ky.

Hunter, Mary Doty (Fresh.) Richmond, Ky.

Hurley, Eulene (Mrs. Godfrey) (Senior) Annville, Ky.

Hurley, Godfrey (Soph.) Annville, Ky.

Hurley, Vadys B. (Soph.) Berea, Ky.

Hurt, Evelyn (Junior) Lancaster, Ky.

Hutchinson, Estille Lee (Soph.) Fannin, Ky.

Hylton, Mousie Ellen (Junior) Pikeville, Ky.

I

Ingels, Mary Katherine (Junior) Cynthiana, Ky.

Isaacs, Deward Belmont (Soph.) Station Camp, Ky.

Isaacs, Grace Newton (Fresh.) Station Camp, Ky.

Isaacs, James Harold (Junior) Irvine, Ky.

Isaacs, Ohna M. (Fresh.) Richmond, Ky.

J

Jackson, Ed (Fresh.) Beattyville, Ky.

Jasper, Mrs. Philip (Senior) Mintonville, Ky.

Jasper, Philip (Senior) Mintonville, Ky.

Jenkins, Joe (Soph.) Fullerton, Ky.

Jennings, Alzada Thompson (Senior) Carlisle, Ky.

Jett, Carmen Leon (Soph.) Canyon Falls, Ky.

Jett, Sam (Soph.) Richmond, Ky.

Johns, Cornelia (Fresh.) Wilmore, Ky.

Johnson, Edgar Peace (Fresh.) Hazard, Ky.

Johnson, Gertrude L. (Junior) Corbin, Ky.

Johnson, Harold (Senior) Paris, Ky.

Johnson, Hazel Decotha (Soph.) Rella, Ky.

Johnson, Jesse Wade (Soph.) Rockholds, Ky.

Johnson, Jessie Louise (Junior) Orlando, Ky.

Johnson, Myrtle Lee (Fresh.) Richmond, Ky.

Johnson, Rena Jane (Fresh.) Orlando, Ky.

Johnston, Nelle (Junior) Annville, Ky.

Jones, Aline Bernice (Soph.) Berea, Ky.

Jones, Etta (Junior) Dunraven, Ky.

Jones, Furman (Senior) Corbin, Ky.

Jones, Ida Masters (Junior) Million, Ky.

Jones, Pauline (Fresh.) Million, Ky.

Jones, Rector Alson (Fresh.) Dreyfus, Ky.

Jordon, Inez Mills (Junior) Winchester, Ky.

Judy, Reuben (Fresh.) Monterey, Ky.

K

Kalb, Mary Kathryn (Junior) Brooksville, Ky.

Kalb, Naomi Margaret (Junior) Brooksville, Ky.

Karrick, Cecil Charles (Fresh.) Richmond, Ky.

Karrick, Sula Jones (Fresh.) Richmond, Ky.

Keeney, Kathryn (Senior) Independence, Ky.

Keith, Theodore H. R. (Junior) Richmond, Ky.

Kelley, Allene (Fresh.) Pleasureville, Ky.

Kelley, Elizabeth Mitchel (Fresh.) Prospect, Ky.

Kelly, Anna Ford (Fresh.) Wallins Creek, Ky.

Kelly, Marguerite Lee (Special) Wallins

Creek, Ky.

Kelsch, Marjorie Marie (Fresh.) Dover, Ky.

Keltner, Jessie Lillian (Fresh.) Somerset, Ky.

Keltner, Thelward (Fresh.) Corbin, Ky.

Kendall, Myrtle Louise (Junior) Elizaville, Ky.

Kidwell, Maryanna (Soph.) Irvine, Ky.

Killen, John Richard (Soph.) New Boston, Ohio.

Kimbler, Sally Eleanor (Senior) Meta, Ky.

Kincaid, B. Grace (Soph.) Richmond, Ky.

Kincer, Curtis Anderson (Fresh.) Brodhead, Ky.

King, Lester Howard (Soph.) Whitley City, Ky.

King, Mary Edna (Junior) LaGrange, Ky.

King, Roy (Soph.) Annville, Ky.

King, William Overton (Junior) Clifton Forge, Va.

Kiser, Helen B. (Junior) Covington, Ky.

L

Lacey, Ro D. (Soph.) Harlan, Ky.

Langdon, Letty L. (Soph.) Manchester, Ky.

Lanham, Oakley (Senior) McKinney, Ky.

Larkin, Louise (Senior) Paris, Ky.

Lawson, Albert (Junior) Julip, Ky.

Lawson, Elsie (Soph.) Paint Lick, Ky.

Lawson, Margaret Viola (Junior) Woodbine, Ky.

Lawson, Robert Waverly (Senior) Corbin, Ky.

Lawton, Lucille (Soph.) Bellevue, Ky.

Layne, Raymond Lee (Graduate) Berea, Ky.

Ledford, Astor H. (Sophomore) Marcum, Ky.

Lee, Addie T. (Soph.) Mummie, Ky.

Lee, Cloda R. (Soph.) Tyner, Ky.

Lee, Elmer (Soph.) Oaks, Ky.

Lee, Henry (Junior) Campbellsburg, Ky.

Lee, Norman (Soph.) Maysville, Ky.

LeMaster, Edith (Junior) Riceville, Ky.

Lester, Virginia Anna (Soph.) Junction, Ky.

Lewis, Charley (Fresh.) McWhorter, Ky.

Lewis, John Kenneth (Junior) London, Ky.

Lewis, Violet (Junior) Dallas, N. C.

Limb, Alfred James (Junior) Salt Lake City, Utah.

DIRECTORY

Linley, Maude Louise (Senior) Cynthiana, Ky.
 Little, Ernest (Fresh.) McWhorter, Ky.
 Locke, Lester Keith (Junior) Kettle Island, Ky.
 Long, Clyde Farnum (Junior) Million, Ky.
 Long, Ferris (Senior) Pineville, Ky.
 Long, Nancy Evelyn (Soph.) Shelbyville, Ky.
 Long, Virginia L. (Senior) Irvine, Ky.
 Long, Walton H. (Soph.) Wallins Creek, Ky.
 Lovette, Sylvia Carroll (Soph.) Hindman, Ky.
 Lovitt, Lee Cas (Junior) Pleasant View, Ky.
 Lowe, Margaret Moreland (Fresh.) Paris, Ky.
 Lowry, Meredith Virginia (Fresh.) Covington, Ky.
 Lucas, Charlie (Junior) Primrose, Ky.
 Lucas, Decoursey Clayton (Fresh.) Primrose, Ky.
 Lucas, Hazel Marie (Fresh.) Primrose, Ky.
 Ludwick, Thomas M. (Senior) Jeffersontown, Ky.
 Luginbuhl, Eleanor Ruth (Fresh.) Norwood, Ohio.
 Lukas, William John (Fresh.) Freeburn, Ky.
 Lund, Arthur Earl (Junior) Salt Lake City, Utah.
 Lunsford, Robert Bruce (Fresh.) Wisemantown, Ky.
 Lutes, Cora (Fresh.) Louisville, Ky.
 Lydey, Woodrow Wilson (Fresh.) Louisville, Ky.
 Lykins, Benjamin W. (Soph.) Bethanna, Ky.
 Lynch, Ruth E. (Soph.) Earnestville, Ky.

Mc

McCullum, Norma (Fresh.) Richmond, Ky.
 McConnell, J. Edgar (Soph.) Forks of Elkhorn, Ky.
 McConnell, William (Senior) Mt. Olivet, Ky.
 McCord, Jack (Senior) Richmond, Ky.
 McCowan, Lou Elizabeth (Soph.) Victory, Ky.
 McCoy, Ruby (Soph.) Belfry, Ky.
 McCulley, Sylvia Rose (Junior) Lancaster, Ky.
 McDaniel, Bertie (Soph.) Oakley, Ky.
 McDaniel, Curtis (Senior) Oakley, Ky.
 McDonald, Edith Mildred (Soph.) Eubank, Ky.
 McDougale, Marion E. (Senior Degree) Richmond, Ky.
 McDowell, Clement (Soph.) West Irvine, Ky.
 McFerron, Ruth M. (Junior) Mt. Vernon, Ky.
 McGaffee, Ardith (Soph.) Tinsley, Ky.
 McGinnis, Garnet Louise (Soph.) Ashland, Ky.
 McGinnis, Paul S. (Junior) Louisville, Ky.
 McGlamery, Virgil Otis (Junior) Harlan, Ky.

McHargue, Edna Lillian (Senior) Pine Hill, Ky.
 McIlvaine, Elizabeth R. (Senior) Richmond, Ky.
 McIntyre, Chester Arthur (Junior) Fusonia, Ky.
 McKamey, Mrs. John E. (Junior) Chaska, Tenn.
 McKinley, Inez (Soph.) Richmond, Ky.
 McKinney, Cecil Foster (Soph.) Brodhead, Ky.
 McKinney, Edith Russell (Fresh.) Richmond, Ky.
 McKinney, Mattie Lou (Senior) Bedford, Ky.
 McKnight, Verna (Soph.) London, Ky.
 McLemore, Lelia (Junior) Ravenna, Ky.
 McLin, Irene (Fresh.) Hazel Green, Ky.
 McManis, Allen Levi (Junior) Carrollton, Ky.
 McNutt, Kathryn (Fresh.) Dover, Ky.
 Macht, William Leroy (Junior) Ft. Thomas, Ky.
 Magee, John Samuel (Soph.) Crab Orchard, Ky.
 Magee, Mrs. Ruth (Senior Degree) Richmond, Ky.
 Maggard, Herman B. (Soph.) Richmond, Ky.
 Mahaffey, Leatha Botner (Soph.) Travelers Rest, Ky.
 Margittay, Anne Marie (Soph.) Richmond, Ky.
 Martin, Genevieve (Fresh.) London, Ky.

M

Martin, George Edward (Junior) Covington, Ky.
 Martin, Leonard (Junior) Galveston, Ky.
 Mason, Fred (Soph.) Ricetown, Ky.
 Masters, Mabel Oclia (Fresh.) Million, Ky.
 Masters, Norma (Senior) Irvine, Ky.
 Mattocks, Mary Grace (Soph.) Beattyville, Ky.
 Maupin, Dorothy Mae (Fresh.) Whites, Ky.
 Mavity, Robert W. (Junior) Covington, Ky.
 Mavity, Samuel Edward (Fresh.) Somerset, Ky.
 Mavity, Walter L. (Junior) Somerset, Ky.
 May, Mildred L. (Junior) Lebanon, Ky.
 Mayes, Fred Marston (Fresh.) Mt. Sterling, Ky.
 Mayo, Louis H. (Fresh.) Prestonsburg, Ky.
 Mays, Otis (Junior) Teague, Ky.
 Mays, Thelma Louise (Soph.) Richmond, Ky.
 Measel, Henry S. (Fresh.) Waynesburg, Ky.
 Meccia, Flora (Fresh.) Lynch, Ky.
 Meccia, Joe A. (Senior) Lynch, Ky.
 Metcalf, William (Junior) Tyner, Ky.
 Metcalfe, Mrs. Lewis (Senior) Lejunior, Ky.
 Metcalfe, Georgetta (Fresh.) Paint Lick, Ky.
 Metcalfe, Lewis Everett (Soph.) Lejunior, Ky.





DIRECTORY

Meyers, Hilda Grace (Soph.) Covington, Ky.
Michelson, Donald (Senior) Mt. Sterling, Ky.
Milbern, Joda C. (Soph.) McKinney, Ky.
Miller, Edith Mae (Soph.) So. Irvine, Ky.
Miller, Effie Dotson (Soph.) Colie, Ky.
Miller, Mary Graham (Soph.) Wickliffe, Ky.
Miller, Thomas J. (Junior) Colie, Ky.
Million, Dorris M. (Soph.) Richmond, Ky.
Million, Evelyn (Soph.) Million, Ky.
Mills, Mayme (Fresh.) Tinsley, Ky.
Mills, Shirley M. (Junior) Pineville, Ky.
Mink, Hobert (Soph.) Oaks, Ky.
Miracle, Estella (Senior) Berea, Ky.
Miracle, Jesse Davis (Soph.) Chenoa, Ky.
Miracle, Katherine (Junior) Pineville, Ky.
Miracle, Mary Ella (Fresh.) Loyall, Ky.
Miracle, Neureul Holt (Senior) Conway, Ky.
Mitchell, Frank (Fresh.) Paris, Ky.
Mitchell, Jewel Dale (Soph.) Paint Lick, Ky.
Mitchell, Joe J. (Fresh.) Barbourville, Ky.
Mitchell, Uriah (Senior) Nancy, Ky.
Mobley, Pleaz William (Junior) Ammie, Ky.
Moneyhon, Mae (Freshman) Augusta, Ky.
Montgomery, Lola (Soph.) Dan, Ky.
Montgomery, Manuel Clark (Senior) Arabia, Ky.
Moore, Eva Frances (Soph.) Stay, Ky.
Moore, Frank Norris (Soph.) Paint Lick, Ky.
Moore, Pauline (Senior) Cow Creek, Ky.
Moore, W. E. (Senior) Ansel, Ky.
Moore, William G. (Fresh.) Richmond, Ky.
Moore, Mrs. W. J. (Special) Richmond, Ky.
Moore, Zelma Elizabeth (Fresh.) Irvin, Ky.
Moores, Caroline (Junior) Richmond, Ky.
Moores, Jesse Turley (Soph.) Richmond, Ky.
Morgan, Bessie Marie (Junior) Richmond, Ky.
Moss, Ico Estell (Junior) Richmond, Ky.
Mullikin, J. W. (Fresh.) Ewing, Ky.
Mullins, Kenneth Price (Fresh.) Mt. Vernon, Ky.
Muncy, James Henry (Soph.) Berea, Ky.
Muncy, Maude Hope (Fresh.) Vicco, Ky.
Murphy, Lloyd (Senior) Brodhead, Ky.
Music, Myrtle Ruth (Junior) Prestonsburg, Ky.
Music, William Donald (Soph.) Auxier, Ky.
Myers, Evelyn Lou (Soph.) Silver Grove, Ky.

N

Nash, Gordon Athol (Senior) Trinity, Ky.
Neal, Charles Raymond (Fresh.) Irvine, Ky.
Neale, James J. (Soph.) Richmond, Ky.
Neale, Margaret Dudley (Junior) Richmond, Ky.
Neely, Mary Garrett (Junior) Somerset, Ky.
Neikirk, Lyle Morrison (Soph.) Somerset, Ky.
Nelson, Edna Harriet (Soph.) Lancaster, Ky.
Nelson, Laura Evalyn (Soph.) Gray, Ky.

Newell, Evelyn Wells (Senior) Covington, Ky.
Ney, Marshall James (Senior) Fort Thomas, Ky.
Nicholas, Kermit Smythe (Fresh.) Williamsburg, Ky.
Noe, Joe (Soph.) Mt. Vernon, Ky.
Noe, J. Smith (Senior) Paint Lick, Ky.
Noe, Mrs. Reba (Soph.) Mt. Vernon, Ky.
Noland, Virginia (Soph.) So. Irvine, Ky.
Northeast, Marzella Louise (Junior) Corinth, Ky.
Nunnolley, Lucile W. (Fresh.) Hustonsville, Ky.

O

O'Donnell, Margaret (Soph.) Richmond, Ky.
O'Donnell, William F. (Fresh.) Richmond, Ky.
Ogden, Nell Elizabeth (Junior) Bedford, Ky.
Oney, Fred Benton (Fresh.) Carrollton, Ky.
Orsborne, Charles Astor (Soph.) Pikeville, Ky.
Orsborne, Grace Cooper (Fresh.) Pikeville, Ky.
Osborne, Emma Belle (Junior) Frenchburg, Ky.
Osborne, Wilma Sue (Fresh.) Williamstown, Ky.
Osborne, Lenora (Senior) Sanders, Ky.
Owens, Chester Byron (Fresh.) Brodhead, Ky.
Owens, Gladise Merle (Soph.) Maysville, Ky.
Owens, William Harold (Soph.) Somerset, Ky.
Owens, William Herschel (Soph.) Maysville, Ky.

P

Pace, Ulysses Grant (Fresh.) Dizney, Ky.
Padgett, Kate (Junior) Paris, Ky.
Paff, Fred Louis (Soph.) Henderson, Ky.
Parker, Raleigh Combs (Senior) Parrott, Ky.
Parks, Cyrus Curtiss (Soph.) Berea, Ky.
Parks, Margaret White (Junior) Ravenna, Ky.
Parsons, Paul L. (Fresh.) Hulen, Ky.
Partin, Delbert Carson (Senior) Campbellsburg, Ky.
Partrick, Emma Olive (Senior) Sumner, Ky.
Patrick, Lincoln Wymer (Junior) Sumner, Ky.
Patrick, William Carman (Fresh.) Paint Lick, Ky.
Payne, Hazel Lena (Soph.) Bond, Ky.
Peed, Laura Virginia (Fresh.) Mt. Sterling, Ky.
Pendergrass, Mary Elizabeth (Fresh.) Pryse, Ky.
Pendleton, Jesse Jackson (Soph.) Lancaster, Ky.
Penn, Helen Jean (Fresh.) Corinth, Ky.

DIRECTORY

Perry, Ruth Virginia (Soph.) Ludlow, Ky.
 Peters, Evelyn C. (Fresh.) Waynesville, Ohio.
 Petty, Sallie (Fresh.) Ashland, Ky.
 Phillips, Alberta Lee (Soph.) Stanford, Ky.
 Pieratt, William Marvin (Fresh.) Frenchburg, Ky.
 Pierson, Opal (Fresh.) Beattyville, Ky.
 Pille, Roy F. (Senior) Dayton, Ky.
 Pittman, Bess E. (Junior) Cain's Store, Ky.
 Pittman, Clifford Raymond (Soph.) Richmond, Ky.
 Pittman, Hazel Lamb (Junior) Dreyfus, Ky.
 Pittman, Robert Ewell (Fresh.) Dreyfus, Ky.
 Pointer, Della Bernice (Fresh.) Richmond, Ky.
 Pointer, Lella (Fresh.) Richmond, Ky.
 Porter, Fannie Wallace (Senior) Clifford, Ky.
 Potter, Fon (Soph.) Ash Camp, Ky.
 Potter, Martha Jane (Senior) Kona, Ky.
 Potter, Woodrow (Soph.) Ash Camp, Ky.
 Powell, Aaron Franklin (Fresh.) Berea, Ky.
 Powell, Hazel Orene (Junior) Irvine, Ky.
 Powers, Rickman (Junior) Crab Orchard, Ky.
 Prather, Katherine Clark (Senior) Owenton, Ky.
 Preston, Imogene (Junior) Offutt, Ky.
 Pulliam, Pauline (Senior) Waddy, Ky.
 Purdom, Cecil (Junior) Gravel Switch, Ky.

Q

Quaing, Jack George (Soph.) Bellevue, Ky.

R

Race, Goldie E. (Senior) Brodhead, Ky.
 Race, Leland D. (Junior) Mt. Vernon, Ky.
 Rader, Carmen (Fresh.) Richmond, Ky.
 Raleigh, Juanita Daisy (Fresh.) Partridge, Ky.
 Ramsey, Homer Wendell (Fresh.) Whitley City, Ky.
 Ramsey, Isaac (Fresh.) McKee, Ky.
 Ramsey, Mamie (Soph.) Coopersville, Ky.
 Rankin, Otwell C. (Soph.) Covington, Ky.
 Rankins, Jack Z. (Soph.) Mt. Olivet, Ky.
 Ransdell, John Gilbert (Fresh.) Erlanger, Ky.
 Ratliff, Hazel Davis (Fresh.) Woodsbend, Ky.
 Ratliff, Ova Wendell (Soph.) Woodsbend, Ky.
 Reams, Anna Ruth (Soph.) Langnau, Ky.
 Reams, Ruby Pearl (Senior) Langnau, Ky.
 Rehtin, Norbert C. (Soph.) Bellevue, Ky.
 Redding, June M. (Senior) Georgetown, Ky.
 Reece, Alma Virginia (Fresh.) Bellevue, Ky.
 Reece, Anna Hazel (Fresh.) Gary, Ind.
 Renfro, Mrs. Minnie (Special) Honey Bee, Ky.
 Reynolds, Edwin W. (Senior) Waynesburg, Ky.
 Reynolds, Elsie Marie (Junior) Tyner, Ky.

Reynolds, Evelyn (Soph.) Waynesburg, Ky.
 Rice, Elizabeth Boyer (Soph.) Silver Grove, Ky.
 Rice, John Mavity (Fresh.) Vanceburg, Ky.
 Rice, Sopha (Soph.) Irvine, Ky.
 Richards, William A. (Senior) Somerset, Ky.
 Richardson, Charles Augustus (Soph.) Morning View, Ky.
 Richardson, Mildred Francis (Fresh.) Science Hill, Ky.
 Richardson, Nelva Marie (Soph.) Science Hill, Ky.
 Ridner, Opal Verneda (Fresh.) Grays, Ky.
 Riggie, Isamay (Junior) Ashland, Ky.
 Rivard, Jessie (Fresh.) Walton, Ky.
 Robbins, Thelma (Fresh.) Brodhead, Ky.
 Roberts, Bige (Fresh.) Hyden, Ky.
 Roberts, Elvy Benton (Soph.) Barbourville, Ky.
 Roberts, Herschel James (Senior) Pineville, Ky.
 Roberts, Joe Monte (Fresh.) Brodhead, Ky.
 Roberts, Viola (Soph.) Manchester, Ky.
 Robertson, Elizabeth F. (Soph.) Finchville, Ky.
 Robertson, Sarah Allcene (Senior) Eminence, Ky.
 Robinette, Charles Edward (Soph.) Richmond, Ky.
 Robinson, Ben (Fresh.) Richmond, Ky.
 Robinson, Charles H. (Soph.) Argillite, Ky.
 Robinson, John Earle (Fresh.) Union, Ky.
 Robinson, Onecta Helen (Fresh.) Harrodsburg, Ky.
 Robinson, Viola (Fresh.) Three Links, Ky.
 Rodgers, James Sory (Fresh.) Covington, Ky.
 Rogers, Molly (Soph.) Richmond, Ky.
 Rose, Lee (Junior) Oil, Ky.
 Ross, Bill (Fresh.) Catlettsburg, Ky.
 Ross, Margaret Lee (Fresh.) Ft. Thomas, Ky.
 Roth, Leslie George (Fresh.) Covington, Ky.
 Rowland, Maxie (Junior) Peabworth, Ky.
 Ruby, Robert (Soph.) Covington, Ky.
 Rucker, Andrew C. (Fresh.) Waco, Ky.
 Rutherford, Ethel Gatliff (Special) Berea, Ky.
 Rutledge, Charles Culton (Fresh.) Richmond, Ky.

S

Safriet, Erma Dean (Fresh.) Mt. Olivet, Ky.
 Safriet, Luther S. (Soph.) Gatliff, Ky.
 Sams, Ethel (Fresh.) W. Irvine, Ky.
 Samuels, Velma Jennings (Junior) Richmond, Ky.
 Sanders, Virginia B. (Fresh.) Harrodsburg, Ky.
 Sandford, Irvin Walter (Fresh.) Bellevue, Ky.
 Satterly, Otto (Senior) Harrodsburg, Ky.
 Satterly, William G. (Junior) Harrodsburg, Ky.
 Savage, John Robert (Soph.) Windy, Ky.





DIRECTORY

Scearce, J. B. (Senior) Bagdad, Ky.
Scharf, George C. (Soph.) Ft. Thomas, Ky.
Schindler, Juanita Margaret (Fresh.) Covington, Ky.
Schneider, Peggy (Fresh.) Newport, Ky.
Schorle, Helen Dorothy (Fresh.) Newport, Ky.
Scott, Thomas M. (Junior) Mt. Sterling, Ky.
Scrivner, Carolyn (Soph.) Berea, Ky.
Seevers, Robert Harmon (Junior) Irvine, Ky.
Selvey, Madge Wilma (Fresh.) Richmond, Ky.
Selvey, Willa Jean (Soph.) Richmond, Ky.
Settle, Ray Walker (Senior) Crab Orchard, Ky.
Sewell, Lucy (Fresh.) Sewell, Ky.
Sewell, Mary Golden (Fresh.) Lee City, Ky.
Sewell, William R. (Special) Lee City, Ky.
Shackelford, Nevyle (Fresh.) Williba, Ky.
Sharp, Newman (Soph.) Corbin, Ky.
Sharp, Rondal J. (Soph.) Corbin, Ky.
Shearer, John L. (Senior) Monticello, Ky.
Shearer, Lula Katherine (Soph.) Monticello, Ky.
Sheetz, James L. (Soph.) Shelbyville, Ky.
Short, Hazel (Fresh.) Campbellsburg, Ky.
Short, James Preston (Senior) Middleburg, Ky.
Short, June Kenneth (Soph.) Newby, Ky.
Simmons, Callia Elizabeth (Fresh.) Prestonsburg, Ky.
Simms, Katy (Junior) Springfield, Ky.
Singleton, William W. (Fresh.) Mt. Vernon, Ky.
Sizemore, Ralph E. (Fresh.) DeMossville, Ky.
Skaggs, Xie Mae (Senior) Richmond, Ky.
Sloan, Viva O. (Graduate) Eubank, Ky.
Slusher, Brown Lee (Fresh.) Calvin, Ky.
Slusher, Walter B. (Soph.) Calvin, Ky.
Smith, Carthel Hill (Fresh.) Prestonsburg, Ky.
Smith, Dorothy (Soph.) Bradshaw, Ky.
Smith, Fuson Enson (Senior) Middlesboro, Ky.
Smith, George Madison (Junior) Corbin, Ky.
Smith, Mary Lilyan (Soph.) Ravenna, Ky.
Smith, Paul W. (Senior) Somerset, Ky.
Smith, Sarah Mrs. (Senior Degree) Union City, Ky.
Snider, Everett E. (Senior) Taylorsville, Ky.
Snodgrass, John Edgar (Fresh.) Richmond, Ky.
Snyder, Ernest B. (Fresh.) Corbin, Ky.
Snyder, Harvey (Fresh.) Corbin, Ky.
Southard, Cleda (Junior) Mt. Vernon, Ky.
Sparks, Bertel (Fresh.) Waneta, Ky.
Sparks, Grace (Fresh.) McKee, Ky.
Sparks, Thelma Mae (Junior) Irvine, Ky.
Spillman, Howard Peak (Fresh.) Campbellsburg, Ky.
Spurlock, Ida Ross (Senior) Bar Creek, Ky.
Spurlock, Levi (Senior) Bar Creek, Ky.
Spurlock, Nannie Belle (Soph.) Bar Creek, Ky.

Stafford, Charles Leonard (Fresh.) Covington, Ky.
Stamper, John Howard (Senior) Waynesburg, Ky.
Stamper, Lemuel N. (Senior) Benham, Ky.
Stamper, Mollic Hamilton (Soph.) Frew, Ky.
Stayton, James Edgar (Fresh.) Ft. Thomas, Ky.
Stebbins, Mary Lynn (Soph.) Richmond, Ky.
Stegall, Martha (Fresh.) Harlan, Ky.
Stephens, Woodrow W. (Junior) Royalton, Ky.
Stephenson, Pearl Mac (Fresh.) Richmond, Ky.
Stevens, Bonnie (Soph.) West Irvine, Ky.
Stevens, Emma V. (Fresh.) Alexandria, Ky.
Stewart, Nell Jack (Junior) Elys, Ky.
Stewart, Mary Katherine (Fresh.) Mt. Olivet, Ky.
Stewart, O. Y. (Senior) Maysville, Ky.
Stewart, Rena Alley (Senior) Beattyville, Ky.
Stewart, William Mason (Senior) Maysville, Ky.
Stigall, Lorinne Woods (Senior) Danville, Ky.
Stigall, Mary Kathleen (Soph.) Irvine, Ky.
Stinson, Lester (Fresh.) Rockholds, Ky.
Stivers, Raymond (Soph.) Pleasureville, Ky.
Stone, Beatrice (Fresh.) Hargett, Ky.
Stout, Sara (Fresh.) New Castle, Ky.
Strong, Lennie (Soph.) Richmond, Ky.
Strong, William C. (Fresh.) Irvine, Ky.
Stroud, Juanita B. (Soph.) Germantown, Ky.
Strunk, Vergie Edith (Soph.) Revilo, Ky.
Sturgell, James G. (Fresh.) Houckville, Ky.
Sudduth, Martha C. (Soph.) Winchester, Ky.
Swan, Estile Russell (Soph.) Corbin, Ky.
Swango, Joanne (Junior) Covington, Ky.
Swetnam, Mildred (Junior) Blaine, Ky.
Swinford, Paris V. (Soph.) Berea, Ky.

T

Tallent, Jennings Steele (Soph.) Corbin, Ky.
Talley, Lillian Frances (Fresh.) May's Lick, Ky.
Tarter, Heber (Senior) Mintonville, Ky.
Tarter, Priscilla (Soph.) Mintonville, Ky.
Taulbee, Bishop (Fresh.) Mary, Ky.
Taylor, Amy (Junior) London, Ky.
Taylor, Anna Katherine (Fresh.) Richmond, Ky.
Taylor, Riffie B. (Senior) Richmond, Ky.
Taylor, S. E. (Soph.) Berea, Ky.
Taylor, William Earl (Fresh.) Richmond, Ky.
Teague, Roy G. (Junior) Gatliff, Ky.
Teater, James Stanley (Soph.) Nicholasville, Ky.
Terrill, Fred E. (Fresh.) Mary, Ky.
Terrill, Robert Lewis (Senior) Richmond, Ky.
Terrill, William Osa (Junior) Mary, Ky.
Terry, Mary Olive (Senior) Ravenna, Ky.
Terry, Sally Ellen (Special) DeWitt, Ky.

DIRECTORY

Thain, Hazel Frances (Fresh.) Newport, Ky.
 Thomas, Eric Mae (Senior) Airedale, Ky.
 Thomas, Ernest Archer (Fresh.) Prestonsburg, Ky.
 Thomas, John Raymond (Soph.) Kerby Knob, Ky.
 Thorn, Earnestine (Soph.) Cynthiana, Ky.
 Thornton, Dorothy B. (Soph.) Alexandria, Ky.
 Throckmorton, Harold Neal (Soph.) Mt. Olivet, Ky.
 Throckmorton, Willia Houston (Soph.) Mt. Olivet, Ky.
 Tierney, Paul E. (Senior) Ashland, Ky.
 Tipton, Dillard (Soph.) Ravenna, Ky.
 Tipton, Halline (Soph.) Ravenna, Ky.
 Tipton, Hazel Estine (Soph.) Ravenna, Ky.
 Todd, Alice Lee (Soph.) Bobtown, Ky.
 Todd, Eugene (Junior) Richmond, Ky.
 Todd, Hazel Virginia (Fresh.) Berea, Ky.
 Todd, Helen Treadway (Junior) Paint Lick, Ky.
 Tolbert, James Davis (Soph.) Owenton, Ky.
 Tolliver, Denola (Fresh.) Hazard, Ky.
 Trapp, Elizabeth Anna (Fresh.) Alexandria, Ky.
 Tribble, Charles Leland (Senior) Richmond, Ky.
 Tucker, Josephine Beatrice (Junior) Stanford, Ky.
 Tudor, Harry (Soph.) Richmond, Ky.
 Tudor, Hise Davis (Junior) Paint Lick, Ky.
 Tudor, Pattie Lucile (Senior) Richmond, Ky.
 Turner, Clarica Williams (Senior) Pikeville, Ky.
 Turner, Daily R. (Graduate) Morris Fork, Ky.
 Turner, Delphia Jean (Fresh.) Yeaddiss, Ky.
 Turner, Lona Lee (Fresh.) Covington, Ky.
 Turner, Opal (Fresh.) Richmond, Ky.
 Turner, Pleas (Junior) Arnett, Ky.
 Turpen, Willie B. (Soph.) Somerset, Ky.
 Tutt, Pryce (Soph.) Hazel Green, Ky.
 Tuttle, Fred Cecil (Special) Richmond, Ky.
 Tuttle, Thelma (Soph.) Witt Springs, Ky.

V

Vallandingham, Rebakah M. (Fresh.) Owenton, Ky.
 Vandermark, Fred (Soph.) Corbin, Ky.
 Van Winkle, Raymond Arthur (Fresh.) Paint Lick, Ky.
 Vaught, Monte Fae (Senior) Somerset, Ky.
 Virgin, Jean (Soph.) Concord, Ky.
 Voshell, Leslie Wilson (Fresh.) Petersburg, Ky.

W

Wachs, Aleene L. (Junior) Covington, Ky.
 Wagers, Charles S. (Fresh.) Richmond, Ky.
 Walker, Dorsey (Soph.) Richmond, Ky.
 Walker, James Porter (Senior) Pineville, Ky.
 Walker, Melva (Senior) Bellevue, Ky.

Wall, William E. (Soph.) Harlan, Ky.
 Wallace, Alexander (Junior) New Castle, Ky.
 Wallace, Hulan (Junior) Quinton, Ky.
 Wallace, Lucy Elizabeth (Fresh.) Irvine, Ky.
 Walters, Francis Russell (Junior) Manchester, Ky.
 Wagner, Willa Mae (Fresh.) Mt. Sterling, Ky.
 Walters, Jan Robert (Soph.) Manchester, Ky.
 Ward, Carl Curtis (Senior) Ezel, Ky.
 Ward, Edith Marie (Junior) Ezel, Ky.
 Ward, Harold Stone (Junior) Paint Lick, Ky.
 Ward, Ruth Jeannette (Fresh.) Slemo, Ky.
 Warford, Barbara Lyle (Soph.) Irvine, Ky.
 Warms, Emil John (Senior) Lebanon, Ky.
 Warms, Pierce (Senior) Lebanon, Ky.
 Warner, Charles Witham (Soph.) Covington, Ky.
 Wash, James Christopher (Soph.) Eminence, Ky.
 Wasson, Norrine Reed (Junior) Carlisle, Ky.
 Watkins, Denver (Junior) Brock, Ky.
 Watkins, Leo (Junior) London, Ky.
 Watts, John Brown (Senior Degree) Richmond, Ky.
 Webb, Geraldine M. (Junior) Mayking, Ky.
 Weddle, Edward Vertrees (Senior) Somerset, Ky.
 Weisgerber, Melvin Menz (Fresh.) Argillite, Ky.
 Wells, Arnetta E. (Soph.) Falmouth, Ky.
 Wells, Henry Herbert (Soph.) Licking River, Ky.
 Wells, Howard Harrison (Fresh.) Frankfort, Ky.
 Wells, Mabel Maltia (Junior) Auxier, Ky.
 Wells, Margaret Katherine (Fresh.) Nicholasville, Ky.
 West, Gwladys (Soph.) Irvine, Ky.
 Whalen, Ruby A. (Soph.) Cynthiana, Ky.
 Wheeler, Capitola (Soph.) Labascus, Ky.
 Whitlock, Loraine (Fresh.) Richmond, Ky.
 Wickersham, Arthur Logan (Soph.) Irvine, Ky.
 Wiggins, Emilie Verne (Soph.) Richmond, Ky.
 Wilborn, Vera Catherine (Fresh.) Shelbyville, Ky.
 Wilcox, Lucien T. (Soph.) Paint Lick, Ky.
 Wilder, Lloyd (Soph.) Oaks, Ky.
 Wilkins, Kathryn Fannie (Senior) Covington, Ky.
 Williams, Adriel Newton (Junior) Shelbyville, Ky.
 Williams, Alice Virginia (Soph.) Virgie, Ky.
 Williams, Julia Lindsay (Junior) Owenton, Ky.
 Williams, Vernice May (Fresh.) Eubank, Ky.
 Willoughby, Margaret (Senior) Richmond, Ky.
 Wilson, Bernard Edward (Senior) Middleboro, Ky.





DIRECTORY

Wilson, Carrie M. (Senior) Crab Orchard, Ky.
Wilson, Charles Douglas (Fresh.) Harlan, Ky.
Wilson, Goldie (Senior) Crab Orchard, Ky.
Wilson, Hazel (Fresh.) Richmond, Ky.
Wilson, Hosea R. (Fresh.) Travellers Rest, Ky.
Wilson, Katherine (Soph.) Guston, Ky.
Wilson, Lillian Browning (Soph.) Irvine, Ky.
Wilson, Lillie Clay (Soph.) Wallins Creek, Ky.
Wilson, Oliver T. (Junior) Ansel, Ky.
Wilson, Roger Lee (Senior) Richmond, Ky.
Wilson, Stanley (Fresh.) Richmond, Ky.
Wilson, Venice (Special) Wallins, Ky.
Wingertter, Ned William (Fresh.) Bellevue, Ky.
Winn, Eunice Witt (Senior) Irvine, Ky.
Winter, Virginia Lee (Fresh.) Dayton, Ky.
Wise, Samuel Preston (Junior) Hargett, Ky.
Witt, John David (Soph.) Witt, Ky.
Witt, Victor Leon (Junior) Wisemantown, Ky.
Woodall, Dorothy E. (Junior) Berea, Ky.
Woody, Eunice Pearl (Junior) Pittsburg, Ky.

Worthington, William Frederick (Junior) Sherman, Ky.
Wright, Ensley (Fresh.) Somerset, Ky.
Wylie, Stanley L. (Fresh.) Richmond, Ky.
Wyrick, Mrs. Dora T. (Junior) Corbin, Ky.
Wyrick, Marguerite (Senior) Richmond, Ky.

Y

Yates, Brown Lee (Soph.) Paris, Ky.
Yates, Rosa Ellen (Senior) Youngs Creek, Ky.
Yates, Victoria Isabella (Fresh.) Waddy, Ky.
Ycager, Carl (Fresh.) Newport, Ky.
York, Crit (Senior) Diablock, Ky.
York, James Monroe (Senior) Viper, Ky.
York, Lewis C. (Fresh.) Diablock, Ky.
York, Lucy Marie (Special) Diablock, Ky.
Young, Amnic (Soph.) Hindman, Ky.
Young, Eloise (Senior) Lawrenceburg, Ky.
Young, Floy Ema (Junior) Williamsburg, Ky.

Z

Zaring, Margaret Steele (Soph.) Richmond, Ky.

