

5-1-1939

## Milestone - 1939

Eastern Kentucky State Teachers College

Follow this and additional works at: <http://encompass.eku.edu/yearbooks>

---

### Recommended Citation

Eastern Kentucky State Teachers College, "Milestone - 1939" (1939). *Yearbooks*. Book 17.  
<http://encompass.eku.edu/yearbooks/17>

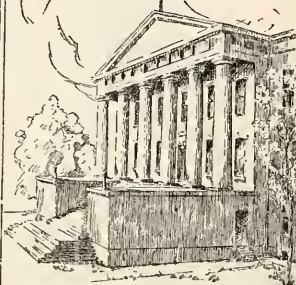
This Article is brought to you for free and open access by the University Publications at Encompass. It has been accepted for inclusion in Yearbooks by an authorized administrator of Encompass. For more information, please contact [Linda.Sizemore@eku.edu](mailto:Linda.Sizemore@eku.edu).

1 9 3 9



*milestone*

Kentuckiana  
John Wilson Townsend Library



EASTERN TEACHERS COLLEGE

RICHMOND

LD1741  
.E463  
M50  
1939

KENTUCKY



Townsend  
LD1741  
.E463  
M50  
1939

Digitized by the Internet Archive  
in 2011 with funding from  
LYRASIS Members and Sloan Foundation



*The Class of*

*1939*

*Presents*

**The MILESTONE**



Vol. XVIII

Copyright MCMXXXIX

# EASTERN KENTUCKY STATE TEACHERS COLLEGE

Richmond, Kentucky

Published by Senior Class

HIRAM M. BROCK, JR. - *Editor*

T. J. BLACK - *Business Manager*

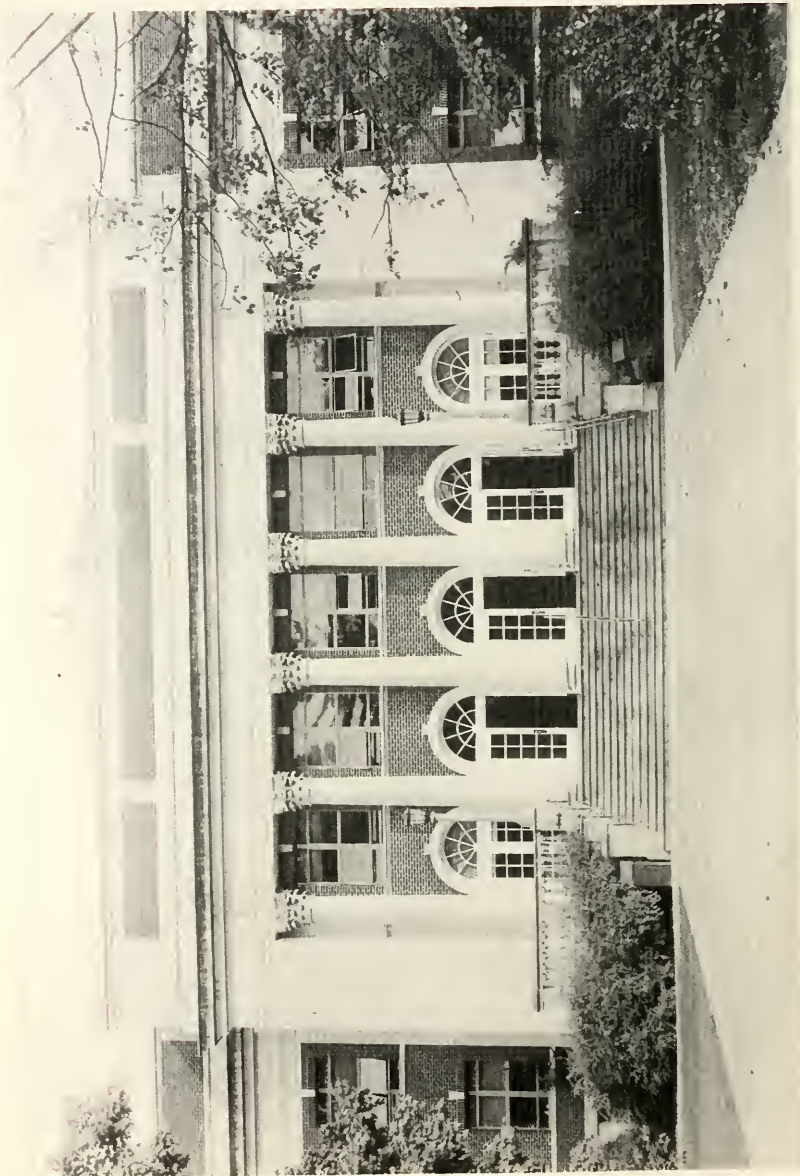
N. G. DENISTON - *Faculty Advisor*

Gift of Mrs. H. L. Donovan



DR. H. L. DONOVAN AND SYMBOLEER 37TH





COATES ADMINISTRATION BUILDING



ACTIVITIES

## PREFACE

*OUR PURPOSE: To show Eastern informally and at work. Our thanks to the faculty, the students, and the college administration. Our appreciation to N. G. Deniston, Sam Beckly, G. M. Brock, and the many people who have helped through their suggestions to publish this Milestone of 1939.*



## DEDICATED TO

Miss Maud Gibson, whose splendid examples of sympathetic understanding and cheerful helpfulness have been, and will always be, an inspiration for a Greater Eastern.

Over twenty-nine years ago, Miss Gibson joined the faculty of Eastern in the capacity of art teacher. She has pursued this work continually and has grown up with the college from its early days as a normal school, and later as a senior college. Throughout these years she has lightened the load and days of all with whom she has come in contact.

A list of her fine qualities would include such attributes as a gallant, self-sacrificing nature; an unassumingly brave spirit; a generous, humoristic mind cached in a fine wit, and a great love for Eastern and all it represents.

"Gibby," as she is known to her host of friends, is justly honored as a humorist, teacher, artist, and true friend of every student. It is the honor of this Milestone to dedicate this volume to her.



## **In Memoriam**

JAMES W. CAMMACK, SR.

*Regent of Eastern Kentucky State Teachers College  
1906 - 1939*

Seeking nothing for himself, he gave his time, his strength, his legal learning, and his wisdom, without remuneration, to build this center of teacher education that future citizens shall be better taught to play their part in the democracy of the Commonwealth. Eastern honors this great citizen and friend.

## In Memoriam

1916 - 1938

In Paul Barry Demoisey—Eastern student and star athlete from 1934 to 1937—the state of Kentucky in all its history, has probably never known a more capable and a more popular performer in athletic contests. Paul's penetrating personality was felt by every person who came in contact with him. To the memory of Paul Demoisey we dedicate this portion of the Milestone.



## Elmer Flannery

1917 - 1938

Elmer Flannery was with us only a short time. But only a short time was required for the Eastern student body to become aware of the fact that in its midst was one who possessed the true qualities of character, personality, and sportsmanship—that was Elmer Flannery.



CAMMACK BUILDING  
Training School

## BOARD OF REGENTS



H. D. FITZPATRICK  
Prestonsburg



HARRY W. PETERS  
Frankfort



JESSE ALVERSON  
Lexington



KEEN JOHNSON  
Richmond





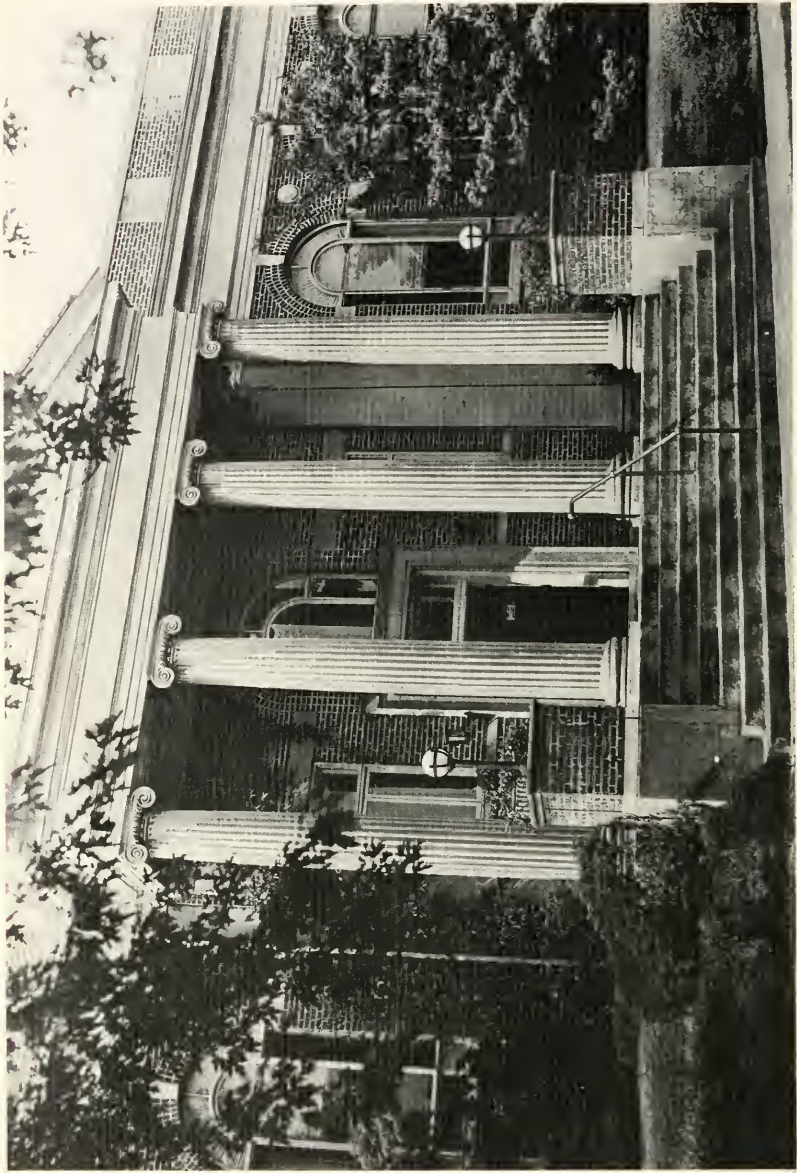
UNIVERSITY BUILDING  
Model High School



MRS. EMMA Y. CASE  
*Dean of Women*

In the capacity of advisor and leader of social activities, Mrs. Case has fulfilled her duties to the betterment of Eastern.





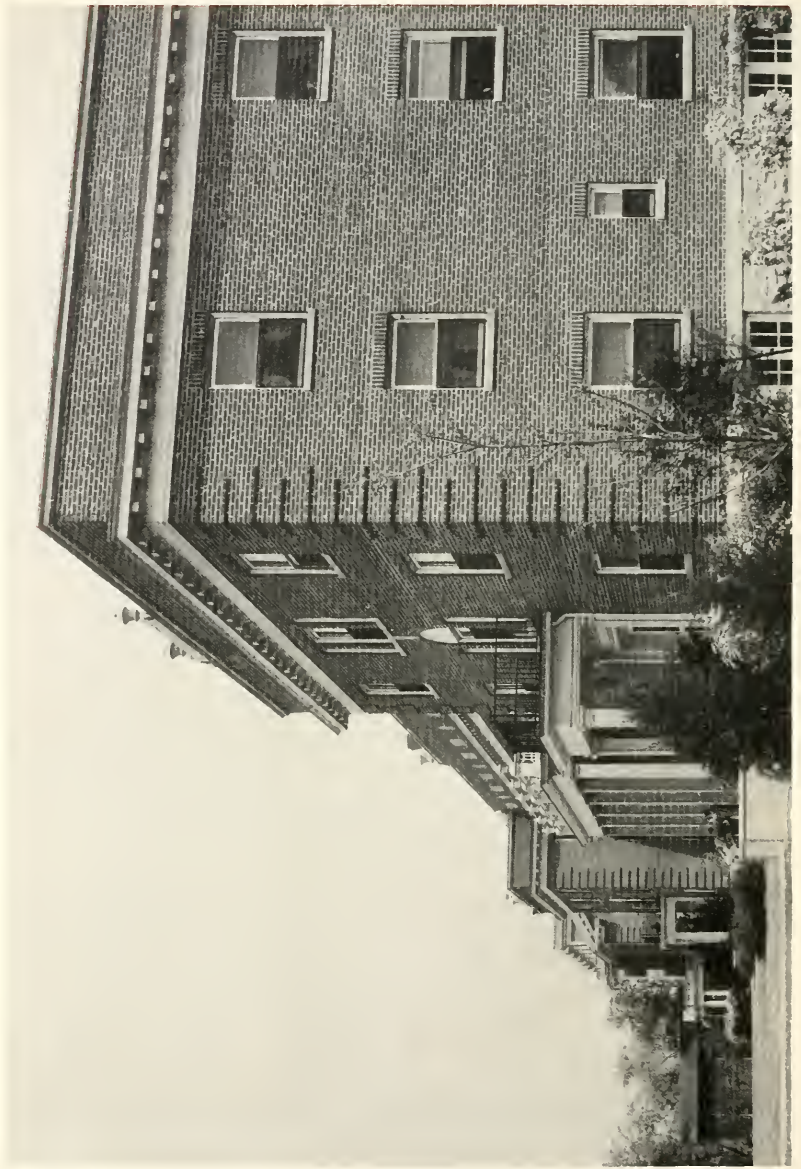
CRABBE LIBRARY



DR. CHARLES A. KEITH  
*Dean of Men*

In his position as advisor to the men students of the college, Mr. Keith has worked unceasingly in the interest of Eastern.





BURNAM HALL  
Women's Dormitory

# Administration





BLANCHE SAMS  
B.Mus., A.B., M.Mus.  
Assistant Professor of Music



GERMANIA J. WINGO  
B.S., M.A.  
Assistant Professor of Elementary Education; Supervising Teacher, Elementary Training School



EDNA WHITE  
Registered Nurse



WILLIAM C. JONES  
B.S., A.M., Ph.D.  
Dean of Faculty; Director of Research; Professor of Education



MRS. EMMA YOUNG CASE  
A.M., M.A.  
Associate Professor of Education; Dean of Women



VIRGIL BURNS  
A.B., M.A.  
Assistant Professor of History and Government



SAUL HOUNCHELL  
A.B., M.A., Ph.D.  
Assistant Professor of English



MELVIN E. MATTOX  
B.S., M.A.  
Professor of Education, Registrar; Director of Extension



SMITH PARK  
B.S., M.S., Ph.D.  
Professor of Mathematics

# A D M I N I S T R A T I O N



VIRGINIA F. STORY  
B.S., M.A.

Assistant Professor of Elementary Education; Supervising Teacher, Elementary Training School

RUBY RUSH  
A.B., A.M.

Assistant Professor of Latin; Supervising Teacher, Model High School

WILLIAM A. MOORE  
A.B., A.M., Ph.D.

Professor of Economics and Commerce

ELLEN PUGH  
A.B., A.M.

Assistant Professor of Elementary Education; Supervising Teacher, Elementary Training School

ROME RANKIN  
A.B., A.M.

Assistant Professor of Physical Education; Athletic Coach

ISABEL BENNETT  
A.B., B.S. in Library Science  
Assistant Librarian in Charge of Circulation

JANE CAMPBELL  
B.Mus., A.B., A.M.  
Assistant Professor of Music

JOHN ROSS KINZER  
A.B., B.Mus., M.A.  
Assistant Professor of Philosophy; Director of Bands

HARRIETTE V. KRICK  
A.B., Ph.D.  
Associate Professor of Biology

# A D M I N I S T R A T I O N





MRS. LUCILE WHITEHEAD  
B.S., B.S. in Library Science  
Assistant Librarian in Charge of  
Reference Work

EUGENE M. LINK  
B.S.  
Captain, Field Artillery, U. S.  
Army; Assistant Professor of  
Military Science and Tactics

FRANCES MASON  
A.B., A.B. in Library Science  
Assistant Librarian in Charge of  
Training School Library

FRED A. ENGLE  
A.B., A.M., Ph.D.  
Assistant Professor of Mathe-  
matics

MARGARET LINGENSEISER  
A.B., A.M.  
Assistant Professor of Ele-  
mentary Education; Supervising  
Teacher, Elementary Training  
School

ANNA D. GILL  
B.C.S., A.B., M.A.  
Assistant Professor of Com-  
merce

EDITH G. FORD  
B.C.S., A.B., A.M.  
Assistant Professor of Com-  
merce

JACOB D. FARRIS  
A.M., M.D.  
Professor of Health Education;  
College Physician

MARY FLOYD  
A.B., M.A., B.S. in Library  
Service  
Librarian

# A D M I N I S T R A T I O N



P. M. GRISE  
A.B., M.A.

Assistant Professor of English;  
Supervising Teacher, Model  
High School

HAROLD RIGBY  
B.S.

Instructor of Music Training  
School

MRS. MARY EDMUNDS BARNHILL  
A.B., M.A., LL.B.  
Associate Professor of English

D. THOMAS FERRELL  
A.B., M.A., Ph.D.

Associate Professor of Education

L. G. KENAMER  
A.B., B.S., M.A., Ph.D.  
Professor of Geography and Geo-  
logy

J. T. DORRIS  
A.B., A.M., Ph.D.  
Professor of History and Gov-  
ernment

MAY C. HANSEN  
B.S., M.A.

Associate Professor of Education

KATIE CARPENTER  
A.B., A.M.  
Assistant Professor of Ele-  
mentary Education; Supervising  
Teacher, Rural Demonstration  
School

DEAN W. RUMBOLD  
B.S., Ph.D.  
Professor of Biology

# A D M I N I S T R A T I O N



ELEANOR MEBANE  
A.B., M.A.  
Assistant Professor of Art

SAMUEL WALKER  
A.B., A.M.  
Assistant Professor of History;  
Supervising Teacher, Model  
High School

BROWN E. TELFORD  
B.S.  
Assistant Professor of Music;  
Teacher of Piano

CHARLES T. HUGHES  
A.B., M.A.  
Assistant Professor of Physical  
Education

GERTRUDE M. HOOD  
A.B., A.M.  
Assistant Professor of Health  
and Physical Education

RALPH W. WHALIN  
B.S., M.Ed.  
Assistant Professor of Industrial  
Arts

G. O. BRYANT  
A.B., A.M.  
Assistant Professor of Mathe-  
matics; Supervising Teacher,  
Model High School

TOM C. SAMUELS  
Ph.C., B.S., M.S.  
Assistant Athletic Coach; In-  
structor of Science; Supervising  
Teacher, Model High School

ARNIM DEAN HUMMELL  
B.S., M.S., Ph.D.  
Professor of Physics

# A D M I N I S T R A T I O N



KERNEY M. ADAMS  
A.B., A.M.  
Associate Professor of History

WILLIAM W. FORD  
Captain, Field Artillery, U. S.  
Army; Assistant Professor Military  
Science and Tactics

THOMAS STONE  
Mus.B.  
Assistant Professor of Music

W. F. O'DONNELL  
A.B., M.A.  
Supervisor of Student Teaching;  
Richmond City School

MAUDE GIBSON  
Assistant Professor of Art

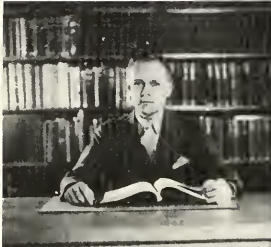
G. M. GUMBERT  
B.S., M.S.  
Assistant Professor of Agriculture

ANNIE ALVIS  
A.B., M.A.  
Assistant Professor of Elementary  
Education; Supervising  
Teacher, Elementary Training  
School

WILLIAM L. KEENE  
B.S., M.A.  
Associate Professor of English

THOMAS C. HERNDON  
B.S., M.A., Ph.D.  
Professor of Chemistry

# ADMINISTRATION



LUCILE A. RICE  
A.B., M.A.  
Assistant Professor of Biology

N. G. DENISTON  
B.M.T., B.S., M.S.  
Associate Professor of Industrial  
Arts

ELIZABETH WILSON  
B.S., M.A.  
Assistant Professor of Ele-  
mentary Education; Supervising  
Teacher, Elementary Training  
School

R. R. RICHARDS  
A.B., M.B.A.  
Assistant Professor of Com-  
merce

MRS. JULIAN TYNG  
B.S., M.A.  
Associate Professor of Education

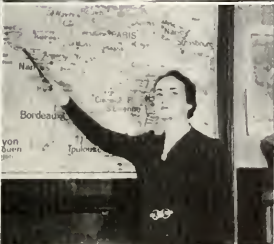
ROY B. CLARK  
A.B., A.M., Ph.D.  
Professor of English

MARY FRANCES MCKINNEY  
B.S., M.A.  
Associate Professor of Geography

NOEL B. CUFF  
B.S., A.M., Ph.D.  
Professor of Psychology

MEREDITH J. COX  
B.S., M.A.  
Professor of Chemistry

# A D M I N I S T R A T I O N



THOMAS E. McDONOUGH  
B.S., M.A.

Associate Professor of Health  
and Physical Education; Director  
of Athletics

CHARLES W. GALLAHER  
B.A., B.S.

Major, Field Artillery, U. S.  
Army; Professor of Military Sci-  
ence and Tactics

MARY KING BURRIER  
B.S., M.S.

Assistant Professor of Home Eco-  
nomics

RICHARD A. EDWARDS  
A.B., A.M.

Professor of Education; Director  
of Training School

ALLIE FOWLER  
B.S., M.A.

Assistant Professor of Art

BETSY ANDERSON  
Training School Librarian

J. DORLAND COATES  
B.S., M.A.

Assistant Professor of Industrial  
Arts and Science; Principal,  
Model High School

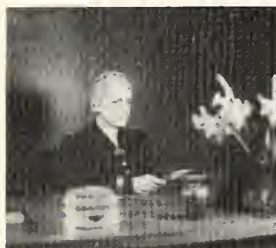
BESS ALICE OWENS  
A.B., M.A.

Assistant Professor of Modern  
Languages

CHARLES A. KEITH  
B.A., M.A., Ped.D.

Professor of History and Gov-  
ernment; Dean of Men

# A D M I N I S T R A T I O N



ANNA A. SCHNIEB  
A.B., A.M., Ph.D.  
Associate Professor of Education

JAMES E. VAN PEURSEM  
A.B., B.Mus.  
Associate Professor of Music

GEORGE N. HEMBREE  
B.C.S., A.B., M.A.  
Assistant Professor of Health  
and Physical Education

ELIZABETH CHERRY  
A.B., M.A.  
Assistant Professor of Physical  
Education

CORA LEE  
B.S., M.A.  
Assistant Professor of Education

NELL HOGAN BRAY  
A.B., M.A.  
Assistant Professor of History;  
Supervising Teacher, Model  
High School; Advisor of Girls,  
Model High School

RUTH DIX  
B.S., M.A.  
Associate Professor of Home  
Economics

PEARL L. BUCHANAN  
A.B., M.A.  
Assistant Professor of Education;  
Director of Little Theatre

ALMA REGENSTEIN  
B.S.  
Assistant Professor of Home  
Economics; Supervising Teacher,  
Model High School

# A D M I N I S T R A T I O N



FRED BALLOU  
Bookstore Clerk

ANNA BALES BLACK  
Assistant Cafeteria Supervisor

E. P. McCONNELL  
Bookkeeper

EMMA OSBORN  
Secretary to Extension Director

KATHERINE MORGAN  
Secretary to President; Secretary  
to Board of Regents

MRS. ELMER BLAIR  
Assistant Bookkeeper and Ste-  
nographer

LOUISE BROADDUS  
Stenographer, Business Office

BESSIE H. GRIGGS  
Information Clerk

AGNES EDMUNDS  
Stenographer, Registrar Office

# A D M I N I S T R A T I O N





MAYE M. WALTZ  
Secretary to Dean

MRS. HELEN PERRY  
Recorder, Registrar's Office

W. A. AULT  
Superintendent, Buildings and  
Grounds

LOIS COLLEY  
Secretary to Business Agent

VIRGINIA STITH  
Stenographer

MRS. HARRY BLANTON  
House-Mother, Burnam

G. M. BROCK  
Business Agent

MRS. MILTON BARKSDALE  
Secretary to Registrar

EDITH MCILVAIN  
Supervisor of Cafeteria

# A D M I N I S T R A T I O N



EUNICE WINGO  
Secretary to Dean of Women



GLADYS KARRICK NORSWORTHY  
Cashier



EMERSON D. JENKINS  
A.B., M.A., Ph.D.  
Associate Professor of Mathematics



ASHBY B. CARTER  
B.S., M.A.  
Associate Professor of Agriculture



SAM BECKLEY  
B.A.  
Assistant Director of Extension



MRS. JANET MURBACH  
A.B., A.M.  
Associate Professor of French

# A D M I N I S T R A T I O N



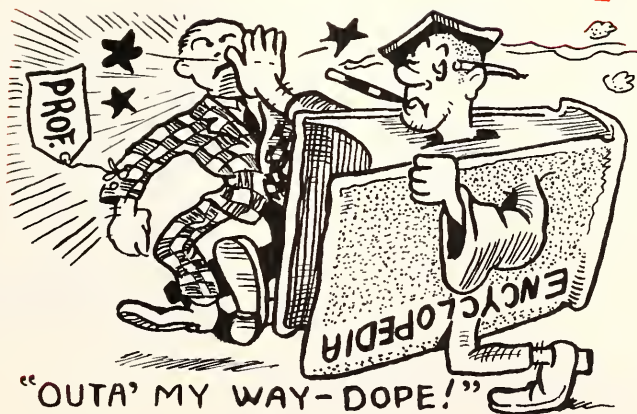
In appreciation of the services of Dr. L. G. Kennamer, who has served as class sponsor since we entered Eastern as Freshmen, we honor this fine gentleman, excellent scholar, and true friend.

He is known throughout the state and nation as an authority in his chosen field; his thousands of friends throughout the state bear witness to his fine personality and sparkling humor; his many student admirers tell of his ability as a teacher; and his very nature betokens a true gentleman.

Each of us is deeply indebted to this man for his influence and example he has set for us to follow. When we leave Eastern, our lives will be fuller for having known him.



T. J. BLACK, President  
HOMER RAMSEY, Vice President  
LUCY WALLACE, Secretary  
RICHARD CANTER, Treasurer



**RICHMAN COLLINS**  
 MAYSVILLE  
*Commerce and History*  
 Basketball '33, '34; Limestone Club; Sigma Tau Pi President '38

**MILDRED MATHERLY**  
 RICHMOND  
*Elementary Education*  
 Kappa Delta Pi; Elementary Council; Y. W. C. A.

**EMILY ALEXANDER**  
 HUSTONVILLE  
*Elementary Education*  
 Elementary Council; Y. W. C. A.; Kappa Delta Pi

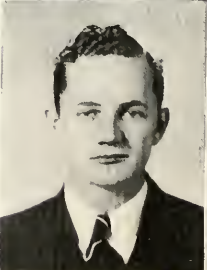
**JOYCE HERMANN**  
 NEWPORT  
*Biology and History*  
 Little Theatre Club; Science Club; Social Science Club; Northern Kentucky Club

**GERTRUDE HAHN**  
 RICHMOND  
*Home Economics*  
 Home Economics Club; Art Club

**IKE HUBBARD**  
 BLACK WATER  
*Agriculture*  
 Night Watchman '36, '37, '38; Upper Cumberland Club

**JOHN ROBINSON**  
 WALTON  
*Mathematics*  
 Science Club; Mathematics Club; Physical Education Club; Northern Kentucky Club

**STELLA HALL**  
 FUSONIA  
*Elementary Education*  
 Elementary Council

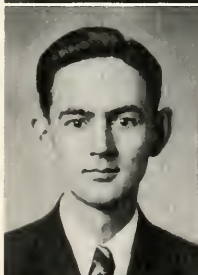




ELIZABETH HANCOCK  
FINCHVILLE  
Elementary Education  
Elementary Council; Y. W. C. A.

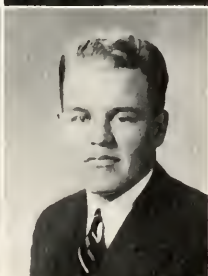
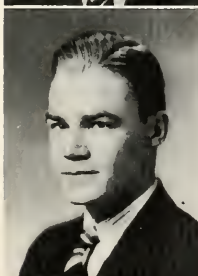


ETHEL BROCKMAN  
SAND GAP  
Elementary Education  
Y. W. C. A.; Clay-Jackson Club; Elementary Council; Social Science Club.



FRANCES B. BURRUS  
NEWBY  
Elementary Education

JOHN DAVID WITT  
WEST IRVINE  
Elementary Education



ELAINE JONES  
OWENTON  
Elementary Education  
Elementary Council; Owen County Club

CHARLES BOWLING  
BERT  
Biology and Social Science  
Upper Cumberland Club; Social Science Club

JOSEPH A. SHEARER  
CAMPBELLSBURG  
Commerce and History  
Sigma Tau Pi; Social Science Club; Northern Kentucky Club; Y. M. C. A.



CARL E. MOORE

FRANKFORT

Chemistry

Football; Kappa Delta Pi; Science Club;  
World Affairs Club; Capitol City Club

OHNA ASHCRAFT

RICHMOND

Elementary Education

ANNA BELLE HUNTER

NICHOLASVILLE

Elementary Education

Y.W.C.A.: Elementary Council

DOROTHY BROCHT

CRITTENDEN

Elementary Education

RUTH CARR

PANOLA

Elementary Education

Elementary Council

EUGENE COLE

HEIDELBERG

Physical Education and Social Science  
Physical Education Club; Social Science  
Club; "E" Club; Baseball; Lee County  
Club

BRUCE W. BARKER

TRAVELERS REST

Mathematics

Science Club; Elementary Council

HELEN BECKNER

HARLAN

Commerce

Pi Omega Pi; Sigma Tau Pi; Social Science  
Club; Upper Cumberland Club





JANE ROBINSON  
RICHMOND  
*Elementary Education*  
Elementary Council; Y. W. C. A.

PAUL BURNAM FIFE  
RICHMOND

*Geography and Social Science*  
World Affairs Club; Social Science Club;  
Sigma Tau Pi



HELEN GAINES  
OWENTON  
*Commerce and History*

RUTH E. LYNCH  
EARNESTVILLE

*Home Economics*  
Canterbury Club; Dormitory Council;  
Home Economics Club; Student Relation-  
ship Council; Y. W. C. A.; Milestone  
Staff



GRAYDON FROST  
CONKLING  
*Social Science and Commerce*

FRANCES MCHORD  
MAYSVILLE

*Commerce and Social Science*  
Le Cercle Francais; Limestone Club; Dor-  
mitory Council; Sigma Tau Pi



ADA M. MOORE  
WIDECREEK  
*English and History*

BURGIN BENTON  
RICHMOND

*English and Social Science*  
Alpha Zeta Kappa; Social Science Club;  
Debating and Oratory





TEDDY CURTIS GILBERT  
PINEVILLE

*Social Science and Geography*  
Social Science Club, Pres. 1939; Upper  
Cumberland Club, Pres. 1937, '39; World  
Affairs Club; Elementary Council; Glee  
Club

MABEL MASTERS  
MILLION  
*Elementary Education*

NELLA MAE BAILEY  
PAINTSVILLE  
*English, French, and Biology*

B S U Council; Canterbury Club; Le  
Cercle Francais; Big Sandy Club; Dormi-  
tory Council; Young Women's Auxiliary;  
Sullivan Hall Office Staff; Y. W. C. A.

ADDIE RUTH MARCUM  
BIG CREEK  
*Home Economics*  
Home Economics Club; Art Club

EMMA ALICE GOODPASTER  
OWINGSVILLE  
*Elementary Education*  
World Affairs Club; Elementary Council

ERNEST B. SNYDER  
CORBIN  
*Industrial Arts and History*  
Upper Cumberland Club; Corbin Club

WILLIAM J. HAGOOD, JR.  
CORBIN  
*Biology*  
Upper Cumberland Club; President Junior  
Class; President Student Relationship  
Council; Football

FRANCES WILLARD JONES  
LONDON  
*English and Social Science*  
Canterbury Club; Social Science Club; Y.  
W. C. A.



**SENIORS**



WILLIA C. BAILEY  
BURGIN  
Commerce  
Art Club; Orchestra; Band

HOMER CLAYTON DAVIS  
EZEL  
History and Geography  
Social Science Club



LON LIMB  
SALT LAKE CITY, UTAH  
Physical Education and History  
Physical Education Club; "E" Club; Social Science Club; Out-of-State Club; Football; Basketball; Track

LUCILE NUNNELLEY  
HUSTONVILLE  
English and Latin  
Freshman Class Treasurer; Canterbury Club; Alpha Zeta Kappa, Pres. 1937-1939; Kappa Delta Pi, Pres. 1938-1939; Editor of Belles Lettres, 1939; Associate Editor of Belles Lettres, 1938; Ushering Staff



DOROTHY LUCILE LITSEY  
SPRINGFIELD  
English and Commerce  
Sigma Tau Pi; Canterbury Club; Y. W. C. A.

MARY RICE COX  
RICE STATION  
Elementary Education  
Elementary Council



MILDRED ABRAMS  
RICHMOND  
Commerce and History  
World Affairs Club; Sigma Tau Pi; Social Science Club; Little Theatre Club; Society Editor for Eastern Progress

AUBREY WM. PREWITT  
CORBIN  
Mathematics and History  
Social Science Club; Mathematics Club; Upper Cumberland Club; Corbin Club



STANLEY WILSON  
RICHMOND

*Biology and Chemistry*  
Science Club; Social Science Club; Caduceus Club; Alpha Zeta Kappa; Boxing and Wrestling

KATHERINE ARNOLD  
FALMOUTH

*Elementary Education*  
Elementary Council; Madrigal Club

JEAN YOUNG  
DAYTON

*Elementary Education*  
Glee Club; Student Relationship Council; Burnam Office Staff; Northern Kentucky Club; Sec.-Treas. Elementary Council, 1939; Y. W. C. A.; Alpha Delta Theta

FLORA MERCER  
MONTICELLO

*Elementary Education*  
Elementary Council; Wayne County Club

AMANDA L. BLACK  
SPRINGFIELD

*English and History*  
Y. W. C. A.; Canterbury Club; Kappa Delta Pi; Social Science Club

EDWARD E. EICHER  
FT. THOMAS

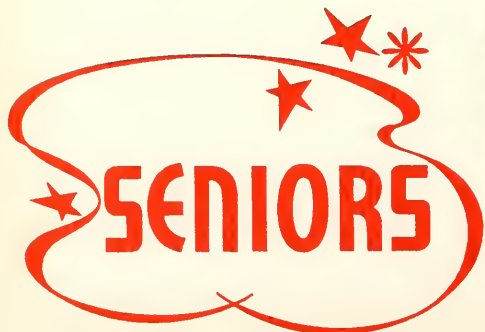
*Commerce and English*  
Band; Alpha Zeta Kappa; Milestone Staff; Editor of Eastern Progress, 1938-'39; Student Relationship Council; Canterbury Club; World Affairs Club; Catholic Club; Northern Kentucky Club

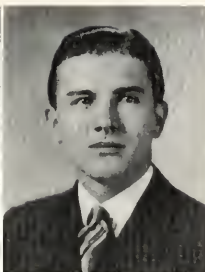
DALE MORGAN  
NEWPORT

*Mathematics and Chemistry*  
Men's Glee Club; Northern Kentucky Club; Milestone Staff; Mathematics Club; World Affairs Club

SALLIE ROUTT PETTY  
ASHLAND

*Home Economics*  
Home Economics Club, Vice-Pres. 1938; Y. W. C. A.; Florence Nightingale Club; Dormitory Council





LOUISE CRAIG  
GHENT  
Elementary Education  
Elementary Council; Art Club

JAMES S. RODGERS, JR  
COVINGTON  
Mathematics and Physics  
Progress Staff; Science Club; Mathematics  
Club; Northern Kentucky Club; Student  
Librarian: Y. M. C. A.



PEARL FRANCISCO  
ASH CAMP  
Elementary Education  
Elementary Council; Art Club

ELIZABETH LUCINDA HALL  
COVINGTON  
Elementary Education  
Elementary Council: Y. W. C. A.



LESLIE GEORGE ROTH  
COVINGTON  
Chemistry and Mathematics  
Science Club; Mathematics Club; Glee  
Club; Band; Track Team; Swimming  
Team; Who's Who; Northern Kentucky  
Club

EDITH HADDIX  
RICHMOND  
Elementary Education  
Elementary Council, Canterbury Club;  
World Affairs Club; Art Club; Baptist  
Student Union



LAURA GILES  
FALLS  
Elementary Education

RAYMOND VAN WINKLE  
PAINT LICK  
Industrial Arts and Art  
Zeta Alpha Gamma; Little Theatre Club;  
Glee Club



**RAY HOGGE**

CRANSTON

History, Agriculture and Geography  
Lloyd Debate Club; Rowan County Club;  
Freshman Football

**EVELYN HUME**

MACKVILLE

Home Economics  
Home Economics Club; Pres. Florence  
Nightingale Club; Science Club

**GEORGIA MYRTLE PERRY**

ALTON STATION

Elementary Education  
Elementary Council; Social Science Club;  
Y. W. C. A.

**GRACE YADEN WILLIAMS**

LONDON

Mathematics

Kappa Delta Pi; Social Science Club;  
Home Economics Club; Upper Cumberland  
Club

**MRS. HAROLD RIGBY**

RICHMOND

Elementary Education

**WILLIAM G. GILBERT**

BLACK WATER

Agriculture

Upper Cumberland Club; Glee Club

**L. LEE POYNTER**

CRAB ORCHARD

Social Science

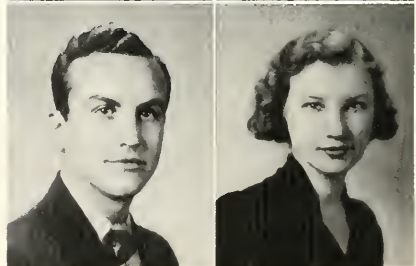
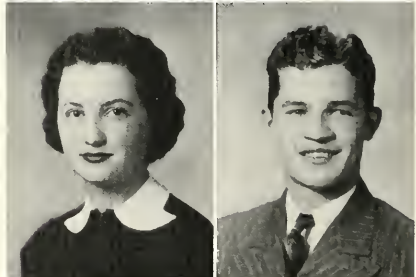
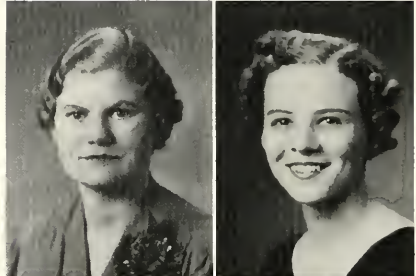
Glee Club; Canterbury Club; Le Cercle  
Francais; Milestone Staff, 1933; Social Science  
Club

**HELEN SCHORLE**

NEWPORT

Elementary Education

Kappa Delta Pi; Alpha Psi Omega; Little  
Theatre Club; Madrigal Club; Elementary  
Council; Northern Kentucky Club





ALICE MARIE EDELMAIER  
COVINGTON  
*Science*

World Affairs Club; Glee Club; Elementary Council; Y. W. C. A.; Northern Kentucky Club

DOUGLAS ELHOFF COOPER  
PORTSMOUTH, OHIO  
*Chemistry*

Cosmopolitan Club; Science Club

EMMA CLARINE LINLEY  
CYNTHIANA

*Home Economics*

Home Economics Club; Kappa Delta Pi; Y. W. C. A.



EDITH MAE GABBARD  
BOONESVILLE

*Home Economics*

Home Economics Club; Y. W. C. A.; Owsley-Lee County Club

FRED M. MAYES  
MT. STERLING

*Physics and Mathematics*

Science Club; Mathematics Club. Pres. '39; Kappa Delta Pi, Vice-Pres. '39; Progress Staff; Y. M. C. A.



FLORA HINES  
SOMERSET

*Elementary Education*

Elementary Council

MARGARET LOUISE CULTON  
RICHMOND

*Music and History*

College Orchestra; College Band; Madrigal Club President '38



RAYMOND H. RUBER  
BUTLER

*Social Science*

World Affairs Club; Sigma Tau Pi; Kappa Delta Pi; Social Science Club



MORRIS B. HOGG

MAYKING

*Mathematics and History*

Social Science Club; Letcher County Club

EUNICE PEARL WOODY

PITTSBURG

*Primary Education*

Elementary Council; Art Club; Upper Cumberland Club

RUTH ALLENE HAMMONS

RICHMOND

*Elementary Education*

Art Club; Elementary Council; Folk Lore Club

MARY GENE PURDY

COVINGTON

*Elementary Education*

Elementary Council; Little Theatre Club; Y. W. C. A.; Northern Kentucky Club

VIRGINIA LEE HORNE

PAINTSVILLE

*Elementary Education*

CHARLES W. WARNER

COVINGTON

*Biology and Social Science*

Little Theatre Club, Treas. '38; Alpha Psi Omega, Pres. '38; Progress Staff; Social Science Club; World Affairs Club; Track; Swimming; Northern Kentucky Club

JAMES C. WASH

EMINENCE

*Commerce*

VIRGINIA ROOT

CORBIN

*Elementary Education*

Baptist Student Union Council; Corbin Club, Pres. '38; Upper Cumberland Club; Elementary Council





NANCY EDWARDS  
RICHMOND  
*Elementary Education*

MILTON DAVID FEINSTEIN  
CORBIN  
*Physical Education*

Physical Education Club; "E" Club; Football; Progress Staff; Milestone Staff; Upper Cumberland Club; Vice-Pres. Junior Class; Dance Orchestra; Band; Swimming Instructor

RUSSELL GREEN  
WINCHESTER  
*Biology and History*

Caduceus Club; Social Science Club; French Club; Science Club; Y. M. C. A.

ETTA JONES  
DUNRAVEN  
*Elementary Education*

VIRGINIA LUCINDA ALLEN  
BUTLER  
*Elementary Education*

World Affairs Club; Little Theatre Club; Elementary Council; Y. W. C. A.

NELL MOORE  
BEATTYVILLE  
*Elementary Education and Art*

Elementary Council; Art Club; Y. W. C. A.

REBEKAH McNEAL  
VALLANDINGHAM  
OWENTON  
*Commerce and English*

Madrigal Club; Sigma Tau Pi; Baptist Student Union; Student Relationship Council; Canterbury Club; Progress Staff; Y. W. C. A.

RICHARD CANTER  
NEW BOSTON, OHIO  
*Biology and Chemistry*

Caduceus Club Treasurer; Senior Class Treasurer; Trainer of Athletic Teams, 4 years; "E" Club; Science Club; Sophomore Class Vice-President; Out-of-State Club President





MELVIN KEETON  
DAYSBORO  
*Biology and Chemistry*

RUBY BURRUS  
RICHMOND  
*Elementary Education*

SULA KARRICK HORD  
RICHMOND  
*Home Economics*  
Home Economics Club; Art Club President

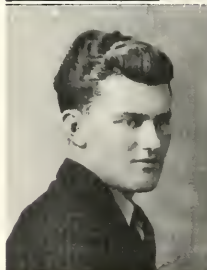
MARGARET HELEN LEWIS  
ELKATAWA  
*English*  
German Club; French Club; Y. W. C. A.;  
Canterbury Club

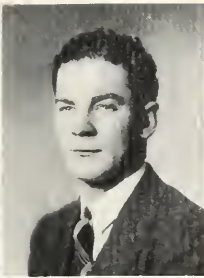
VIRGINIA PAULINE JONES  
MILLION  
*Commerce and Social Science*  
Social Science Club

SHOFF OWEN DAUGHERTY  
MONTICELLO  
*Elementary Education*  
Y. M. C. A.; Elementary Council; World  
Affairs Club

ESTILL DAVIDSON  
ANNVILLE  
*Intermediate Education and Supervision*

DORIS LYNN BURGESS  
PAINT LICK  
*Elementary Education*  
Little Theatre Club; Band; Alpha Zeta  
Kappa; Elementary Council





**DORRIS MARCH MILLION**

**RICHMOND**

*Social Science*

Y. W. C. A. Cabinet; Social Science Club; Art Club

**ELVY BENTON ROBERTS**

**BARBOURVILLE**

*Biology and Chemistry*

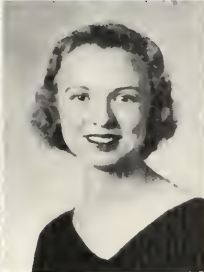
Science Club; Caduceus Club; Band

**LOIS MAY EICH**

**BELLEVUE**

*Home Economics*

Glee Club; Milestone Staff; Home Economics Club; Little Theatre Club; Northern Kentucky Club; Art Club



**MARY ELLEN RICHMOND**

**LUDLOW**

*English and Social Science*

Little Theatre Club; Social Science Club; President Canterbury Club 1938-'39; Library Staff; Y. W. C. A.; Northern Kentucky Club

**NORMA FRANCES McCOLLUM**

**RICHMOND**

*Commerce and English*

Sigma Tau Pi; Canterbury Club



**ROSE MICHELLE McCAWLEY**

**SPRINGFIELD**

*Elementary Education*

Catholic Club; Elementary Council; Washington County Club

**KATHLEEN STIGALL**

**RAVENNA**

*History and Commerce*

Social Science Club; Sigma Tau Pi; Alpha Zeta Kappa



**FAYETTE WELLMAN**

**IRAD**

*Industrial Arts and Social Science*

Baptist Student Union; Iota Alpha Gamma



**ROBERT C. RUBY**  
COVINGTON

Commerce and Social Science  
Sigma Tau Pi; Le Cercle Francais; North-  
ern Kentucky Club; Men's Dormitory  
Council; Frosh Football

**JANE Y. CASE**

RICHMOND

Elementary Education  
Little Theatre Club; Elementary Council;  
Student Relationship Council

**VICTORIA YATES**

WADDY

History and English  
Social Science Club; Elementary French  
Club; Social Committee, Junior Year

**HIRAM MONTGOMERY BROCK, JR.**

HARLAN

English and Social Science  
Freshmen Football; Freshmen Vice-Pres.;  
President Sophomore Class; Progress Staff;  
Little Theatre Club; Pres. Harlan County  
Club; Pres. Upper Cumberland Club;  
World Affairs Club; Editor of Milestone;  
Social Science Club; Student Relationship  
Council; Canterbury Club; Swimming  
Team

**LUCY ELIZABETH WALLACE**

IRVINE

Home Economics  
Vice-Pres. Home Economics Club; Student  
Relationship Council; Secretary Senior  
Class; Ushering Staff

**CHARLES LEONARD STAFFORD**

COVINGTON

English and Government

Freshmen Pres.; Pres. Little Theatre Club;  
World Affairs Club; Alpha Psi Omega;  
Milestone Staff; Social Committee; Can-  
terbury Club; Belles Lettres Business Man-  
ager; Social Science Club; Who's Who in  
American Colleges and Universities;  
Freshmen Football; Little Theatre Club,  
Stage Manager '38

**JACK JOSEPH MERLINO**

PALISADES, COLO.

Art and History

Alpha Gamma Sigma; Art Club; Football;  
Basketball; Baseball; "E" Club; Out-of-  
State Club; Milestone Staff

**PEARL MAE STEPHENSON**

RICHMOND

Home Economics

Home Economics Club; Little Theatre  
Club; Sigma Tau Pi; Class Secretary '35  
to '38; Social Committee





VIRGINIA BABER  
WINCHESTER

*Elementary Education*

Art Club; Elementary Council; Y. W. C. A.

T. J. BLACK  
RICHMOND

*Mathematics and Physics*

Senior Class Pres. 1938, '39; Business Manager of Milestone; Who's Who Among American Colleges and Universities; Science Club

HOMER WENDELL RAMSEY  
WHITLEY CITY

*Social Science and English*

Vice-Pres. Senior Class; Manager of Football and Basketball; Social Science Club; Canterbury Club; Milestone Staff; "E" Club; Baseball; Basketball; Football



LUCY M. TEATER  
NICHOLASVILLE

*English and Social Science*

Canterbury Club; Social Science Club; World Affairs Club; Folk Lore Society; Y. W. C. A.; Band

ARTHUR LOGAN WICKERSHAM  
IRVINE

*Chemistry and Mathematics*

Pres. Men's Glee Club 1938, '39; Pres. World Affairs Club 1938, '39; Student Relationship Council; Kyma Club



MILDRED SOVINE  
ASHLAND

*Elementary Education*

Madrigal Club; Elementary Council

MILDREN FRANCIS RICHARDSON  
SCIENCE HILL

*Art*

Madrigal Club; Art Club

GEORGE WILSON DURR  
HARRODSBURG

*Commerce and Social Science*

Vice Pres. Sigma Tau Pi; World Affairs Club; Social Science Club; Pres. Boyle, Mercer, Anderson County Club; Milestone Staff; Baptist Student Union



WILLIAM O. TERRILL  
COMPTON  
*Mathematics and History*  
Social Science Club; Elementary Council

MRS. BESSIE L. CLARK  
RICHMOND  
*Elementary Education*  
Elementary Council; World Affairs Club;  
Kappa Delta Pi

EMMA NOLAND  
RICHMOND  
*Elementary Education*

CECIL C. KARRICK  
RICHMOND  
*Industrial Arts and Music*  
Men's Glee Club; Zeta Alpha Gamma; Art  
Club

MARTHA HAMMONDS  
PLEASUREVILLE  
*Elementary Education*  
Elementary Council; Social Science Club;  
North Central Kentucky Club

HAZEL SWARTZ  
EWING  
*History and Geography*  
Social Science Club; World Affairs Club;  
Folk Lore Club

EWELL ROBERTS ARRASMITH  
BETHEL  
*History, Art, and Commerce*  
Art Club; Social Science Club; Y. M.  
C. A.

ADA B. CORNELIUS  
MERSHONS  
*English and Geography*  
World Affairs Club; Upper Cumberland  
Club





VIRGINIA PEED

MT. STERLING

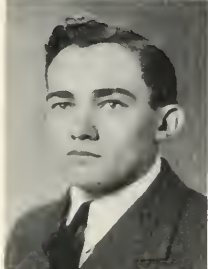
Home Economics

Home Economics Club; Art Club; Y. W.  
C. A.; Florence Nightingale Club

ROY DREW

BEREA

History and Physical Education



JOHN W. MOORE

FALMOUTH

Mathematics and Commerce

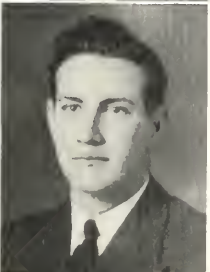
Sigma Tau Phi; Mathematics Club; World  
Affairs Club; Elementary Council

MARY AGNES BOHM

SHELBYVILLE

English and Physical Education

Who's Who Among American Colleges &  
Universities



FLORENCE CHAMPION

SALVISA

Elementary Education

Madrigal Club; Elementary Council; Y.  
W. C. A.; Art Club; Parliamentary Club

WILSON THOMAS ASHBY

SHELBYVILLE

Commerce and History

Sigma Tau Phi; Alpha Zeta Kappa; Y. M.  
C. A., President '38, Vice-President '37;  
Social Science Club



EARL BRANDENBURG

MILLERS CREEK

History

Elementary Council; Mathematics Club





## WHO'S WHO AMONG STUDENTS in AMERICAN UNIVERSITIES and COLLEGES

Leonard Stafford  
T. J. Black

Mary E. Richmond  
Mary A. Bohn

Ruth Lynch

Leslie Roth  
Lucille Nunnelley

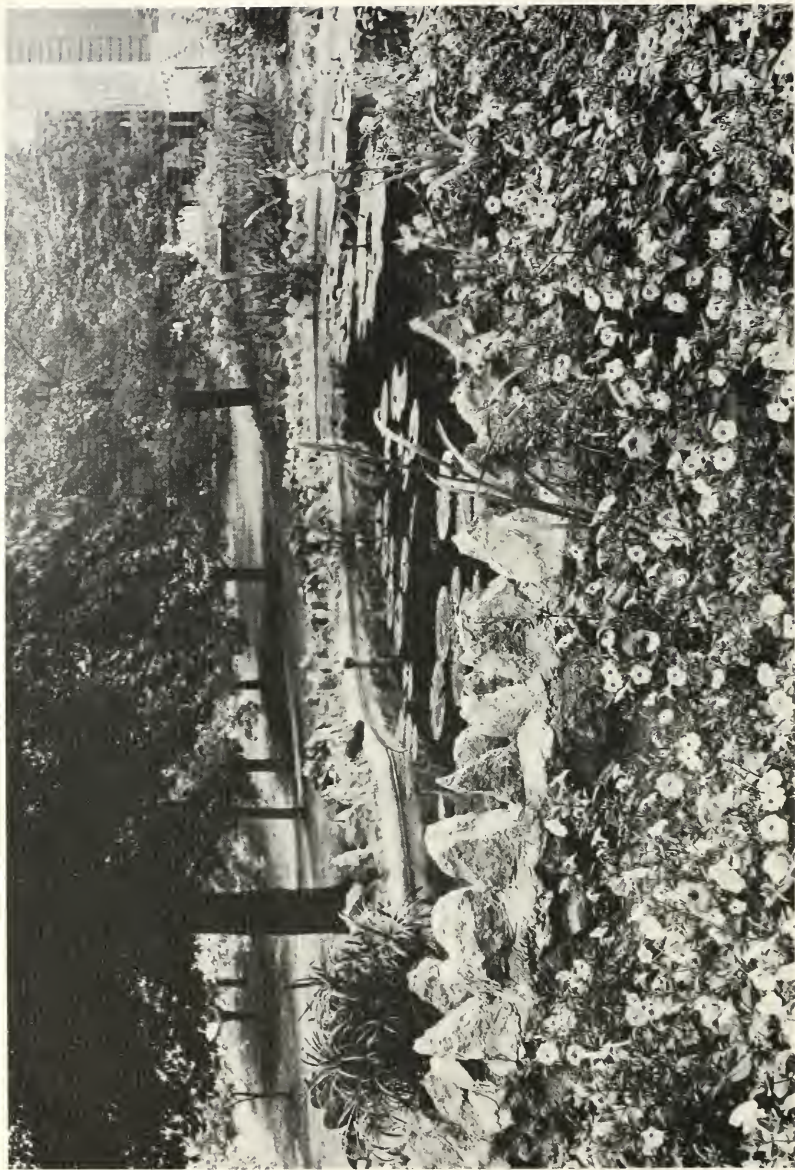
The students to be included in this volume were selected on the following qualities:

"Character" — "Leadership" — "Scholarship" — "Potentialities"



SULLIVAN HALL  
Women's Dormitory





LILY POND



WILLIAM ADAMS, President  
ROBT. DICKMAN, Vice President  
MILDRED COLEY, Secretary  
SUE TOADVINE, Treasurer





MARGIE HALL

WILMA CHANEY

DUWARD SALISBURY

ELOISE WOMMACK

ROBERT STINSON

INIS DOTSON

MARGARET WITT

HAROLD WICKLUND

FLORA KENNAMER

WILLIAM E. ADAMS

MARY ELIZABETH KINNEY

MARION D. PERKINS

# JUNIORS

CLYDE J. LEWIS

PEGGY DENNY

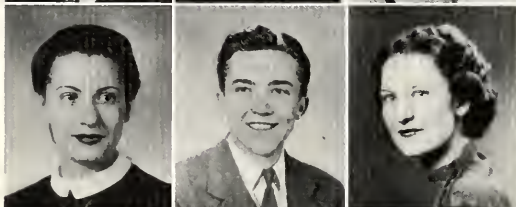
FRANCES LITTLE



DOROTHY DORRIS

FRANK WILCOX

EULA MAE NUNNERY



ELIZABETH CULTON

CARL KEMP

LUISE HOLMAN



ANN STIGLITZ

HELEN ROZAN

CLYDE ROUSE



## A large, stylized red graphic. It features a thick red outline that forms a shape resembling a speech bubble or a banner. Inside this shape, the word "JUNIORS" is written in a bold, red, sans-serif font. There are four red stars: one at the top left, two in the upper middle, and one at the bottom right. The graphic is set against a light background.



DOROTHY WHITE

MABEL WHITE

CHARLES R. NEAL

BETTY STURN

ARNOLD O'REAR RICHARDSON

LORENE ESTRIDGE

MARY FRANCES CLARKE

JAMES STANFIELD

VIRGINIA MARZ

DONOVAN COOPER

FRANCES COSTANZO

EDYTHE ROGERS

**JUNIORS**

BILL COMLEY  
LUCILLE BURY  
NINA LEE STINETTE



SUE TOADVINE  
ROBERT DICKMAN  
PAULINE JASPER



ELIZABETH FLOWERS

JOHN SUTER

VERA MARZ



EULA FIELDS

MINNIE LEE WOOD

THELWARD KELTNER



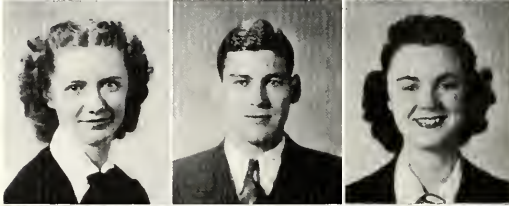
**JUNIORS**



JULIA MARTIN

MARY DAWN

DONALD MUSIC



CHARLIE DEE CAMPBELL

JAMES STAYTON

MARY HELEN CAYWOOD



AGNES VICTORIA SMITH

J. W. MULLIKEN

NEVA GAYLE BUSH



TILTON BANNISTER

SHIRLEY CRITES

ANN OSBORNE

# JUNIORS

SOPHIA NOLAND

GEDRGE R. POWERS

LORAINE BOWEN

MARY HELEN EADS

ELDORA CHAMBERLAIN

NANTIE BELL REED



A large, stylized red logo for the Junior class. The word "JUNIORS" is written in a bold, sans-serif font inside a red speech bubble shape. There are four red stars: one at the top left, two above the "I" and "O", and one at the bottom right.

# JUNIORS

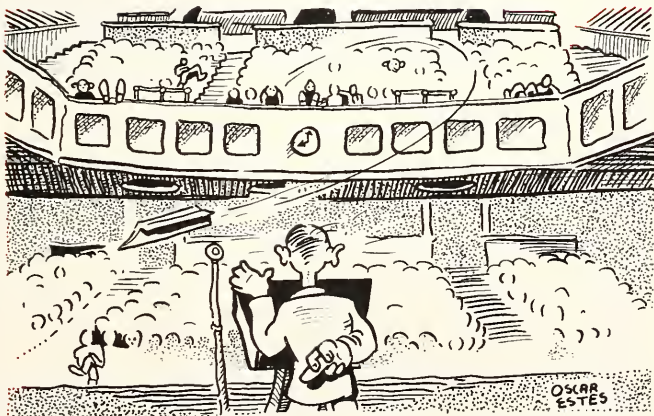




WEAVER HEALTH BUILDING



ORA TUSSEY, President  
JAMES SQUIRES, Vice President  
RUTH CATLETT, Secretary & Treasurer





# SOPHOMORES



EDWARD GABBARD

WALLACE BRAMMELL

CHRISTINE RANKIN

ELEANOR CENTER

MARY K. BLACK

RUTH CATLETT

LOUISE GARLAND

MARTHA UELTSCHI

LILLIAN LEWALLEN

LUCY SHADOAN

MARIE HUGHES

KATHRYN PITTMAN

DONIPHAN BURRUS

JOHN O. ROSE

DUDLEY KENNY

MARION PARK SMITH



# SOPHOMORES

OSCAR ESTES

CLARKE GREY

OLIVE GABRIEL

DORIS JONES

WILMA ALLEN

FRANCES COX

MARY WAGONER

DOTTI BROCK

LYDA SHEPHERD

DOTTY EGGENSPILLER

KATHLEEN CLARK

MARY AGNES FINNERAN

PAUL ROBINSON

GEORGE LEWIS

MARGUERITE RIVARD

ANN LEE PARKS



# SOPHOMORES



ELMER CAYWOOD, JR.

JAMES SQUIRES

EDNA FORESTER

RUTH AMMERMAN

JUNE TREADWAY

MARY LYDIA MCLIVAIN

HELEN FLETCHER

ROBERTA RIGGS

MARY ELEANOR BLACK

DORIS MASSEY

MILDRED RICH

LELA CORNETT

ORA TUSSEY

JAMES C. BROCK

PAULINE CAWOOD

BETSY ARBUCKLE



WALTER MAYER

CLAUDE HARRIS

VIRGIE LEE SCOTT

JUNE BAKER

GEORGIA GILLY

RINA GONZALES

HOPE JONES

MARTHA BERLIN

LORAIN MCKINNEY

ALBERTA CAMERON

JEAN CAINES

EDNA HARRISON

JUAN R. MARCHAND

ALLEN ZARING

EVELYN L. SIC

NANCILYNN FOX

\*  
**SOPHOMORES**  
 \*



DONALD STEGER

RICHARD WETZEL

VIRGINIA GARLAND

RUBY KEETON

BETSY CASTER

HELEN HARRISON

ELEANOR BEST

HATTIE HOLLAND

TRAVIS COMBS

WILLARD SANDIDGE

PHOEBE COLBERT

ANN RODGERS

★  
★  
\*  
**SOPHOMORES**



ADMINISTRATION & HIRAM BROCK AUDITORIUM

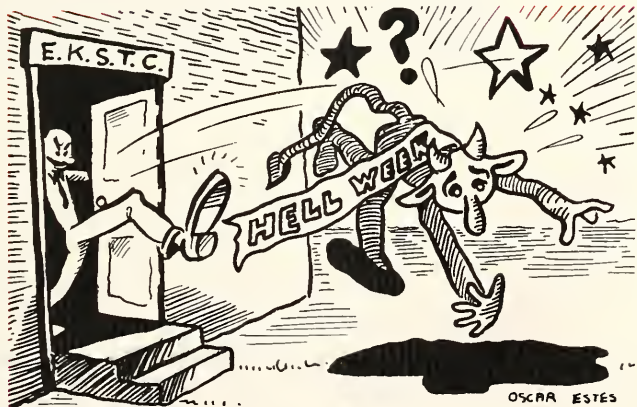




ROARK BUILDING  
Science



FRANK FLANAGAN, President  
SUSAN BIESACH, Secretary  
VERA MAYBURY, Treasurer  
CLAUDE HARRIS, Vice President





LUCILLE HIATT

HUBBARD N. STONE

MADELYNNE JANE COOKE

FELONISE LEAKE

MARGARET JENKINS

JANE DAY WARFORD

RUTH LEDFORD

DORRIS CHANEY

IMOGENE TRENT

NELL EVANS

EMMA SWAN

HAZEL BLACK

KATHLEEN SMITH

RUTH SALMON GREER

DORCELLA WELLS

CHESTER HILL

MARGARET ROSE WILDER

CHARLES RUSSELL

BONNIE JEANNE GANN

MILDRED JONES

★  
\*  
★  
**FRESHMEN**



HELEN SHERWOOD

JAMES ED WALTERS

GLADYS SHEWMAKER

VIVIAN WEBER

EVELYN REESE

PAULINE BERRYMAN

JEWEL CLARKE

CUBA MULLINS

CAROLYN BROCK

FANNIE B. WYATT

EVELYN LEWIS

EILEEN FRAME

HAZEL B. WALKER

ESTHER DILLMAN

MARY B. CUSSADY

RAYMOND E. GOODLETT

NINA AGE

LEE FARRIS

JAQUELINE JORDAN

DORISELWOOD LEMON

FRESHMEN



MARGARET COLLEY

JOHN D. TOLLNER

HELEN PHELPS

TRUDY GARRIOT

RENO E. OLDFIELD

PAULINE SNYDER

THEDA DUNAVENT

MARTHA CAMMACK

MILDRED TURPIN

EDITH COLE

RAMONA J. ROBERTS

KATHLEEN SNOW

MILDRED OSBORN

JEAN MONEY

ELIZABETH L. RICE

DICK DICKERSON

NORA FRANCES CECIL

CLAUDE McSPADDEN

DORIS DAVIS

MAUDE HESS HOLDER

★  
\*  
★  
**FRESHMEN**



ALMA MINCH

JACK SPRATT

PAT SMITH

GEORGIA ROOT

PHYLLIS SATTERLEE

BEULAH DAVIS

ELIZABETH CLUBB

SUSAN BIESACK

MARY BILLINGSLEY

NINA KANATZAR

GARNETTE BURGIN

VIRGINIA CARLSON

MILDRED GORTNEY

BILLIE CLARK

EVELYN THOMAS

EUGENE KENNEDY

JEWELL MARTIN

EARL DAVIS

CHARLOTTE HAYNES

JANE TAYLOR

FRESHMEN



BEATRICE WELCH

JEAN FOX DEMOISEY

JUNE MCCARTHY

RILLA BOWLES

HIEATT NESBITT

SADIE BRASHER

SARA FOTHERGILL

ANNA EVELYN LONG

CALLIE GRITTON

MARY MATT TAYLOR

SARA BROOKS

RUTH VIRGINIA FORTNER

ALICE ROSE LYKINS

MARY LEE HOWARD

MARY STAYTON

GEORGE FORTNER

ELY LOUISE DEATEN

RAY NELSON

EDNA B. HYMER

MAXINE DAVIS

★  
\*  
★  
**FRESHMEN**



RUTH KINGSBURY

DOCK CHANDLER

VIRGINIA BEST

ANN THOMAS

MILDRED RAISOR

RUTH DeVERE

MARGIE SUE HARRISON

KITTY ANN DELAHUNT

RUBY ANN HUGHES

VERA JUNE MAYBURY

BARBARA ANN BUTLER

ANNA LEE WHITE

SALLY HOBBS

HELOISE COX

NANCYE WATERS

DUDLEY NOLAND SPARKS

DOROTHY HUTCHISON

GILBERT MILLER

GERTRUDE BATES

SADIE COX

  
**FRESHMEN**





JEAN MARIE CRAWFORD,

JUANITA ESHAM

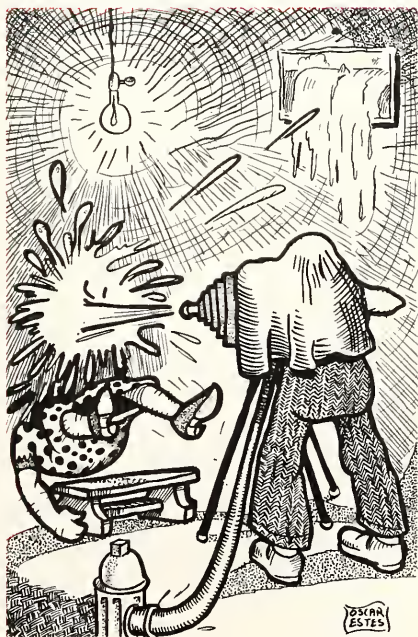
DOROTHY CARROLL

BUFORD GRIFFITH



BAND CONCERT

# Eastern's Favorites





*Luise Holman*

**MISS EASTERN**



*Marion Campbell*

**JUNIOR PROM QUEEN**



*Frances Little*  
**HONORARY ATTENDANT**



*Marjorie Sears*  
**ATTENDANT**



*Lucy Wallace*

**MISS POPULARITY**



*Richard Canter*

**MR. POPULARITY**





ACTIVITIES



R. O. T. C.





MAJOR CHARLES W. GALLAHER  
*Professor of Military Science and Tactics*



CAPTAIN W. W. FORD  
*Assistant Professor of Military Science and Tactics*



CAPTAIN EUGENE M. LINK  
*Assistant Professor of Military Science and Tactics*



## ADVANCED CORPS

Left to right, front row—Forbes, Major; Stafford, Captain; House, First Lieutenant; Roth, Captain; Brock, Captain; Ramsey, First Lieutenant. Morgan, First Lieutenant

Second row—Adams, Sergeant; Pittman, Second Lieutenant; Brown, Sergeant; Wilcox, Sergeant; Huck, Sergeant; McCarthy, Sergeant

Third row—Neikirk, Sergeant; Hennessey, Sergeant; Taylor, Sergeant; Whitaker, Sergeant; Cooper, Sergeant

Fourth row—Downing, Sergeant; Salisbury, Sergeant; Suter, Sergeant; Yelton, Sergeant



The Corps will miss Captain Ford next year when he goes to the War College in Washington, D. C., for further study.



Miss Frances Little, retiring queen of the Military Ball, Eastern's social highlight, is honored as she reigns in the stead of the absent queen, Miss Luise Holman. Miss Eula Mae Nunnery, left, sponsor of Battery B, and Miss Lois Eich, right, sponsor of Battery A, attend her.



MISS LOIS EICH  
*Sponsor Battery A*



MISS LUISE HOLMAN  
*Corps Sponsor*



MISS EULA MAE NUNNERY  
*Sponsor Battery B*



CORPS ON PARADE



## PISTOL TEAM

Back row—Paynter, Floyd, Anthony, Stocker, Rich

Front row—Hill, Brown (Captain), Wilcox, Stayton, Salisbury, Captain W. W. Ford





## R. O. T. C. SNAPS

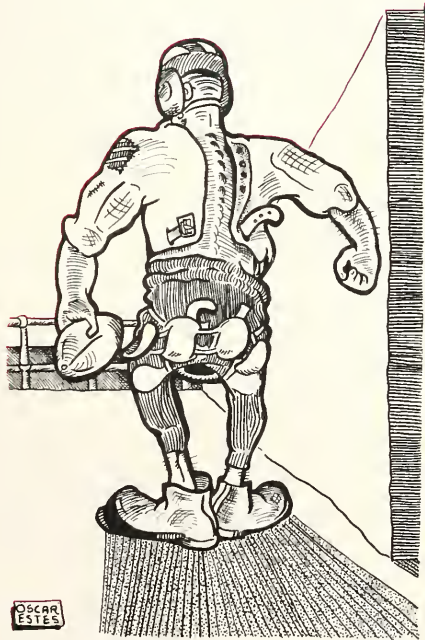
Left to right—And in this corner! Newell and Allen look bewildered. Number please? Captain Ford "watches the birdie," Guy Whitehead takes a look, while J. Stayton expresses his opinion. Three officers ought to get it right. Target—Enemy tank to direct front. The Liason reports "mission accomplished."





Left to right—Captain Link obliges while members of the 17th F. A. watch Eastern beat Indiana. Gee whiz! You can see through them! John Rose guards the "Ad" building and Mullikan wonders what it is all about. The R. O. T. C. "whoops it up" before the Moorehead game. Harrodsburg watches the cadets "in action."

# Football



# Maroons End Season in Blaze of Glory

Eastern Outclasses Eastern Athlete  
Indiana State In Is Victor In  
Homescoming Tilt Golden Gloves

Seven Seniors Play Last Home Game Before Capacity Crowd

Walter Hill, Senior, Wins By Decision In Light-Heavy Group

Hill Crosses Goal For Season's First Touchdown  
Transy Loses To Big Maroon  
Quint By 34-28

McWhorter and Tussey Combination Proves Too Strong for Promoters

FROSH WIN  
Eastern Will Face Heavier Team But Is Picked To Win

Maroons, Still Unscored On, Win Third Straight From Tennessee Team

Eastern Plows Mud And Union To Win 24-0

FINAL GAME  
Big Red Plays Best Ball of Season To Trounce Opponents

Maroons After Fourth Win Of Season This Afternoon

Maroons Win First Hill, Kemp, and Combs Furnish  
KIAC Tilt From Touchdown Thrills and Give  
Louisville Cards Eastern First K. I. A. C. Victory

Fresh Football Team Shows Most Talent In Years

THURMAN STARS  
Eastern Defeats Berea In Roughly Played Game

Against Central Normal

Come From Behind To Beat Rivals In Last Minute Of Contest

Hard Plunging Line and Fine Blocking Defeats Tigers

M WHORTER STAR

TRANSY TODAY

Maroons Take 2nd K. I. A. C. Contest By Beating Transy

Football Players Are Presented Varsity Letters

Thurman and Hill Again Use Pass Combination In Order to Score

22 Members of Squad Receive Major "B"; Seven Are Seniors

MORGAN CONVERTS

TEN SOPHOMORES

Outstanding an aerial attack in the closing minutes of the contest. Eastern's best blocking never scored a lone touchdown and kept out Transy's runners to 9 in a hotly contested battle in the final period.

Twenty-two members of Eastern's varsity college football team received major "B" for their part in the most successful season in the school's history. It was announced by T. E. Morgan, head coach, at the annual election, adjournment, and homecoming exercises.

Coaches Attend Conventions At Chicago, Atlanta

Only seven of the letter winners are seniors. Four juniors and two sophomores.

Rankin, McDonough Meet With Physical Ed.



25 MAROONS REPORT TO ROME RANKIN

Eastern Coach Sends Men Into Tackling and Blocking Drills on Broad Day of Practice Period

TUSSEY OUT BECAUSE OF ANKLE HURT

X-Ray Discloses Maroon Center Has Chipped Bone in Ankle, Not Practice

# Maroons, Eagles Meet in Hawg Rifle Tilt

Battle For Possession Of Old Firearm To Be One Of Leading Games In State; Teams Ready

Eastern Cheers As Maroons Run Over Central Normal To Win By Big Score

Maroons End Their Most Successful Season To Easy Win Over Centre Colonels

Baby Maroons Score Once To Defeat Transy

Season's Largest Crowd Expected Here Tomorrow

The summary

Carl Kemp Accounts For All 4 Scores On Slippery Field

Maroons Score At Will and Second Team Best Action

Baby Maroons Take Preliminary From Wesleyan Fresh

Eastern Scores On Last Play To Get Margin Of Victory

EAGLES FAYOEBED

Castro (77) FG 2 2 11

Maroons Run Over Wesleyan Fresh

Final Game

Maroons Turn From Gridiron To Hardwood To Continue Winning Streak; Rankin Cheerful

Final Game

Spring Football Practice To Begin Monday, Feb. 27

Castro (77) FG 2 2 11

Eastern Takes State Race At Season's End

Eastern Takes State Race At Season's End

Eastern Takes Many Experienced Players Return For Practice

Minute Of Game LARGE SQUAD

Many Veterans To Return From Last Year's Victories

Castro (77) FG 2 2 11

Eastern Leads State Race At Season's End

Eastern Leads State Race At Season's End

Eastern Takes Many Experienced Players Return For Practice

Minute Of Game LARGE SQUAD

SQUAD LISTED

Eastern Leads State Race At Season's End

Eastern Leads State Race At Season's End

Eastern Takes Many Experienced Players Return For Practice

Minute Of Game LARGE SQUAD

MAROONS IN STATE NET RACE LEAD

Eastern Leads State Race At Season's End

Eastern Leads State Race At Season's End

Eastern Takes Many Experienced Players Return For Practice

Minute Of Game LARGE SQUAD

Sixteen Games on Schedule of State Fives This Week, Cut Irish Battle Heads Card

Eastern Leads State Race At Season's End

Eastern Leads State Race At Season's End

Eastern Takes Many Experienced Players Return For Practice

Minute Of Game LARGE SQUAD

EASTERN PLAYS 2

Eastern Leads State Race At Season's End

Eastern Leads State Race At Season's End

Eastern Takes Many Experienced Players Return For Practice

Minute Of Game LARGE SQUAD

By The Associated Press An active team of 18 games featured in the University of Kentucky's January sports program.

Eastern Leads State Race At Season's End

Eastern Leads State Race At Season's End

Eastern Takes Many Experienced Players Return For Practice

Minute Of Game LARGE SQUAD

Laurel County Leads In Net Tournament

Eastern Leads State Race At Season's End

Eastern Leads State Race At Season's End

Eastern Takes Many Experienced Players Return For Practice

Minute Of Game LARGE SQUAD

Boone and Kenton Counties Tied In National League

Eastern Leads State Race At Season's End

Eastern Leads State Race At Season's End

Eastern Takes Many Experienced Players Return For Practice

Minute Of Game LARGE SQUAD

TOURNEY PLANNED

Eastern Leads State Race At Season's End

Eastern Leads State Race At Season's End

Eastern Takes Many Experienced Players Return For Practice

Minute Of Game LARGE SQUAD



Record Attendance Expected At Homescoming Program

Baseball Schedule Is Released; Practice Will Begin March 15

Varied Program Is Prepared For Alumni and Former Students

Coach Henthorn plans to start baseball practice on March 15 providing the field can be graded and laid off by that time. This year Eastern has arranged an attractive baseball season. These colleges will visit the Maroons will compete at:

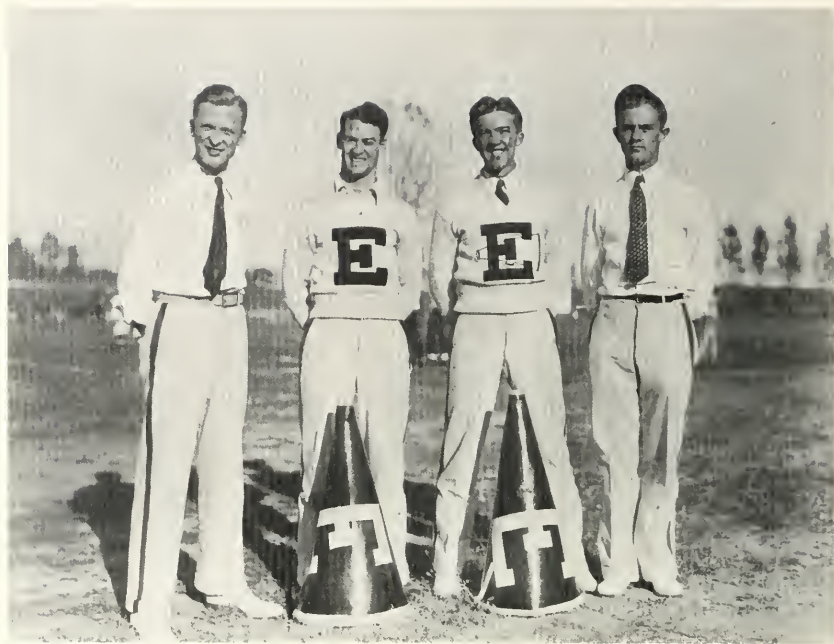
APR 8—Franklin, here  
APR 15—Northern Ill., here  
APR 22—U. of Cin., here  
APR 29—U. of Ky., here  
MAY 6—U. of Tenn., here  
MAY 13—U. of Tenn., here  
MAY 20—U. of Cin., here  
MAY 27—U. of Tenn., here

# K.I.A.C. TORNEY OPENS HERE TODAY



## DIRECTOR of ATHLETICS

To Mr. Thomas E. McDonough we sincerely dedicate this section of the Milestone. In a small way it is to acknowledge his honorable post, President of the Southern District of the American Physical Education Association. This due honor was graciously bestowed upon him at the Atlantic City Convention in 1938. We are fortunate to have Mr. "Mac," as he is affectionately known among his friends, as head of the department of Health and Physical Education. His task is no small one, yet he accomplishes much in a seemingly simple manner. As Director of Athletics he has been instrumental in the recent success of the athletic teams. Due to his efforts and the cooperation of his staff, he has gained for Eastern a splendid reputation in the field of Health and Physical Education. Mr. James E. Rogers, Director of the National Physical Education Service, recently said of Mr. "Mac," "He is a great leader and a great teacher in the field of Physical Education." As a student of that great leader and great teacher, I say, "I agree."



Left to right—James Hart, Bill Lominac, Frank Wilcox, and Joe Bell

## CHEER LEADERS

For the first time in its history, Eastern witnessed during the school year of 1938-'39, the efforts of an organized group—Kyma—to promote a better spirit, a higher appreciation, and a finer quality of sportsmanship among the students.

It was Kyma—a highly interested group of enthusiastic students—who hanged "Willie Western," led student parades, built bonfires, and created a new spirit in the students by its pep rallies. The spirit of Kyma was evident on the campus throughout the school year.



## VARSITY FOOTBALL TEAM

Left to right, bottom row—Canter, trainer; Mowat, Bright, Ordich, Feinstein, Gordon, Thurman, Merlino, and Ramsey, manager

Middle row—Helton, Guy, Saad, Gott, Morgan, Hennessey, Luman, Mayer, Elder, Rose, manager

Third row—Coach Rankin, Lydey, Yeager, Tussey, Lewis, Harrell, Kemp, Hagood, Locknane, Scott, Line Coach Samuels, and Assistant Coach Hughes

## 1938 RECORD

Eastern.....19	Georgetown .....	0
Eastern..... 7	Transylvania .....	0
Eastern.....19	E. Tenn. Tchrs....	0
Eastern.....47	Central Normal ..	0
Eastern..... 0	Morehead .....	0
Eastern..... 7	Western .....	32
Eastern.....36	Indiana State ....	7
Eastern.....24	Union .....	0



"A gentleman, a coach,  
a teacher, a friend."



"Quiet, modest, a mold-  
er of fine linemen."



## SEASON'S RESUME

A hot September sun shone down on the bluegrass of Stateland Field and found thirty young huskies going through limbering-up exercises and basic fundamentals.

Came the opening game with Georgetown. The game went along on even terms till the fourth quarter when the Maroons looked their best and the Georgetown team wilted. The score stood Eastern 19, Georgetown 0. A sophomore, Wyatt "Spider" Thurman, and a junior, Carl Kemp, sparked the Maroons' attack.

The journey to "Transy" proved uneventful, but the Maroons found an inspired Transy team giving stubborn resistance and scored a 7 to 0 victory.

On a jaunt into East Tennessee the Maroons began to show precision on offense and irresistibility on defense. A heavy East Tennessee Teachers team could make only one first down through the line. Score 19 to 0, Eastern.

Central Normal of Danville, Indiana came fruitlessly into Kentucky. The small, helpless team fell before the offensive barrage of the Big Red Team by a score of 47 to 0.





The Maroons at this point gained national recognition as one of the five undefeated, untied, and unscored on teams in the Nation.

Came the game of the year. The day when the greased pig and symbolic "Hawg" Rifle made their appearance. When the smoke of the battle cleared away, neither team had scored. The Maroons had repulsed three offensive thrusts of a favored Morehead eleven and the Maroons remained unbeaten and yet unscored on.

The Western "Hilltoppers" surged into Richmond determined to mar the Maroons' outstanding record. They did. The nightmare ended with Eastern on the short end of a 32 to 7 score.

Came Homecoming with Indiana State Teachers of Terre Haute. The Maroons after leading 12 to 7 at half-time, turned on and added 18 points in the second period. Final score 36 to 7.

The final game, with Union, at Barbourville, was played in a sea of mud and water. The Maroons splashed their way to a 24 to 0 victory over the stubborn Bulldogs.

And so the greatest season any Maroon team ever experienced drew to a close. It was finis for seven dependable seniors, it was invaluable experience for five juniors, it was the beginning for twelve stalwart sophomores. For 1939 we anticipate greater things.







Hill, End  
Co-Captain

Elder, Guard

Hagood, Tackle  
Co-Captain

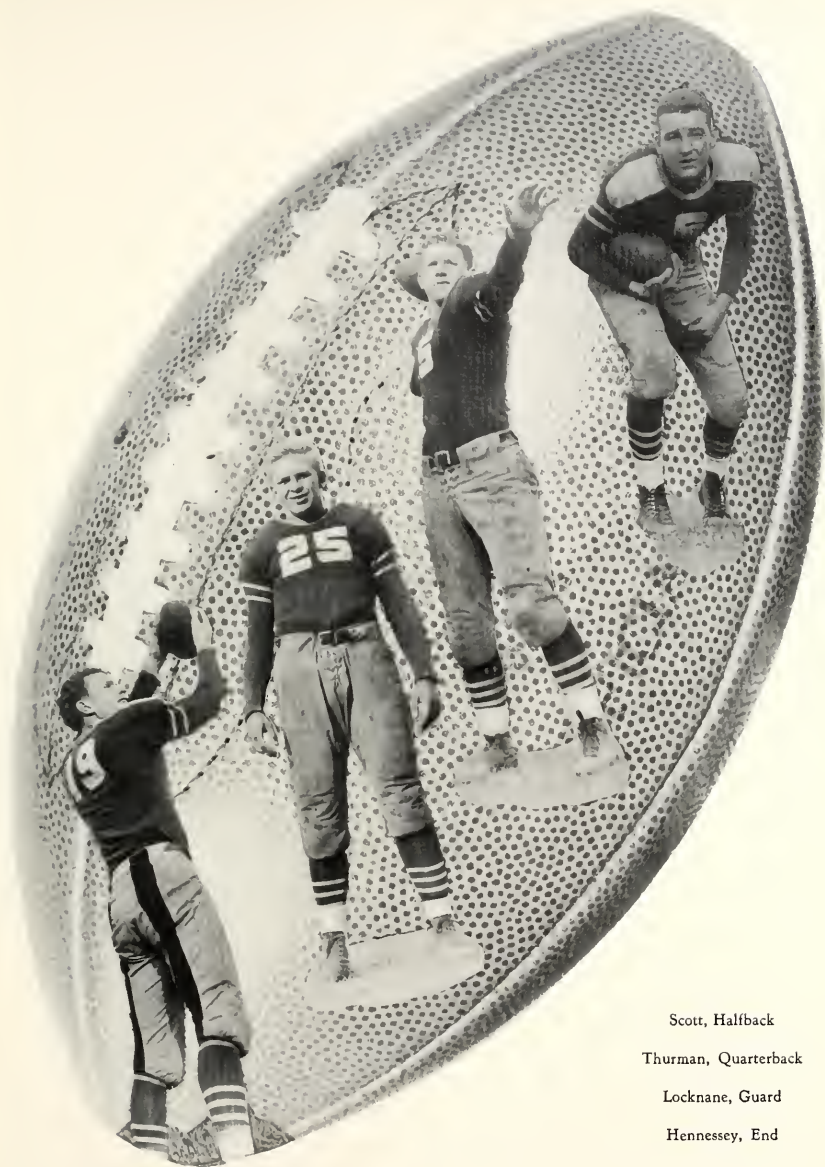
Feinstein, Quarterback



Canter, Trainer  
Lydey, Center  
Luman, Halfback  
Merlino, Halfback



Kemp, Fullback  
Mowat, Halfback  
Ramsey, Manager  
Yeager, End



Scott, Halfback

Thurman, Quarterback

Locknane, Guard

Hennessey, End



Combs, Halfback

Lewis, Tackle

Helton, Tackle

Morgan, Guard



Gordon, End  
Saad, Center  
Ordich, Fullback  
Mayer, Guard



Harrell, Tackle

Gott, End

Prater, Halfback

Tussey, Tackle



Rose, Manager  
Co-Captains  
Hagood and Hill  
with Coach Rankin  
Guy, End





## FRESHMAN FOOTBALL

Front row—Hickman, Phillips, Tychonievich, Flanagan, Oliver, Blackburn, Mgr.

Second row—Griggs, Benton, Waters, R. Darling, F. Darling, Frazier, Sorrell

Third row—Griffith, Davis, Nash, Perry, Wilson, Cross, Coach Hughes



## YEARLING FOOTBALL

This year the Freshman candidates assembled a week before school started and by registration were well on the way to accustoming themselves to the necessary but unpleasant task of providing "cannon fodder."

The Freshmen played two games this season. They lost the first to Centre 24-0 and came back strong to defeat Transylvania 7-0. Football fans should be especially hopeful concerning the collegiate careers of Fred and Ralph Darling, Waters, Sorrel, and Perry in the line and Cross, Flanagan, and Wilson in the backfield of future Eastern gridiron teams.

# Basketball





## BASKETBALL TEAM

Bottom row—McWhorter (Captain), Abney, Perry, Canter (Trainer), Thurman, King, and Luman

Second row—Ramsey (Manager), Helton, Gott, Tussey, Yeager, Shetler, Hennessey, and Rose (Manager)

The thud of toe against pigskin had hardly died away when Coach Rome Rankin issued the call for basketball practice. Only one game was on deck before the Christmas vacation, and after a gruelling contest the Maroons won out by sheer stamina over the University of Louisville Cards by 47-42. Came the scholastic "purge" and one of the two seniors on the squad, Lester King, was declared ineligible at the mid-year mark. Rankin, sometimes known as "Dead-pan" Rome, was really in a dilemma. With a revamped line-up consisting of Tussey at center, McWhorter and Abney at the forward positions, and Thurman and Perry at the guard posts, the Maroons began to click. Four sophomores and one junior, supplemented by one senior, Woody Luman, two juniors, Yeager and Hennessey, and Gott, Shetler, and Murrel, sophomores, carried on in a surprising manner and racked up win after win. Our nemesis and keen rivals, Western, was the only team to beat us more than once. Transy, Berea, Wesleyan, and Centre fell victims to the Big Red team in both contests played. An early defeat at Morehead was decisively avenged at the Weaver gym when the Maroons hit their peak and subdued the Eagles by a margin of eighteen points. Union was both the victor and the vanquished in their heated home-and-home series.

The Maroons hung up a total of six hundred and twenty points, or an average of a point a minute. McWhorter scored one hundred and eighty points. Tussey and Abney also hit above the century mark. Thurman was one of the best defensive men in the K. I. A. C. "Peck" Perry is one of the most outstanding floor-men ever to grace a Maroon and White uniform. For the season of 1938-39 we say, "Well done." For the season of 1939-40, we say, "Here's hoping."



King, Forward

Luman, Forward

McWhorter, Forward

Yeager, Guard



Tussey, Center

Hennessey, Guard      Abney, Guard

Perry, Guard



Thurman, Guard

Gott, Guard

Murrell, Forward

Shetler, Center



## FRESHMAN BASKETBALL

The Little Maroons began their existence in a mediocre manner with scrimmages against the varsity for their daily menu. Under the watchful eye of Coach Charles "Turkey" Hughes, though, they soon began to develop into a smooth-functioning unit. Led by Osborne and DeMoisey, former Walton cage stars, and ably assisted by little Cliff Tinnell of Covington, Fred Darling, a Gloucester, Ohio gladiator, and Jim Vance, ace defensive man, the Frosh accumulated nine victories while suffering only two losses. Berea, Centre, and Wesleyan fell twice and Morehead and Sue Bennett cagers managed to split with the Baby Maroons.

Our hats are off to this courageous little squad that at one time numbered only six men. Conceding nothing, they fought gamely until the final whistle. Among the squad that stuck through thick and thin were, Sorrell, Flanagan, R. Darling, and Ty-chonevich. Among the group Coach Rankin should find excellent material for future varsity teams.



EASTERN BASEBALL TEAM

First row—Tinnell, Mgr., Music, Porter, Williams, Cooper, Rice, Merlino, Capt.  
 Second row—Shetler, Drew, Voshell, Murrell, Davidson, T. Combs, Mgr.  
 Third row—Lewis, Cole, Guy, Wallace, Hines, Hembree, Coach.

The following were absent when the picture was made.  
 Yeager, Abney, C. Combs, Gilreath.

## BASEBALL TEAM

The Maroon Baseball team under the direction of Coach George Hembree is out to defend the K. I. A. C. Championship for the eighth consecutive year. Coach Hembree has been turning out successful baseball teams since Earle Combs, Coach of the New York Yankees, played for him several moons ago.

Many of last year's stellar athletes were lost by graduation and ineligibility. Little is known of the strength of this year's team. In their opening game the Maroon took a 2 to 0 decision from the Franklin College nine, in a game cut short by snow and rain.

The team is blessed with a fine pitching staff headed by Vernon "Lefty" Shetler, star sophomore hurler. Carl Yeager, John Rice, Bob Abney, and Woodrow Guy are very capable twirlers expected to win their share of games. The early season line-up consists of Williams or Lewis behind the bat, Music at first base, Hines at second, Merlino at short, Voshell at third, and Porter, Murrell and Davidson in the out-field.

The Maroon nine will cavort on a new field this year modeled after Crosley field in Cincinnati. It is one of the finest in the state. The Milestone offers its best wishes to seniors Jack Merlino and Leslie Voshell who are to try out for a Major League baseball team.



Coach Hembree





Bottom row, left to right—Dickman, Weaver, Evans, Mills

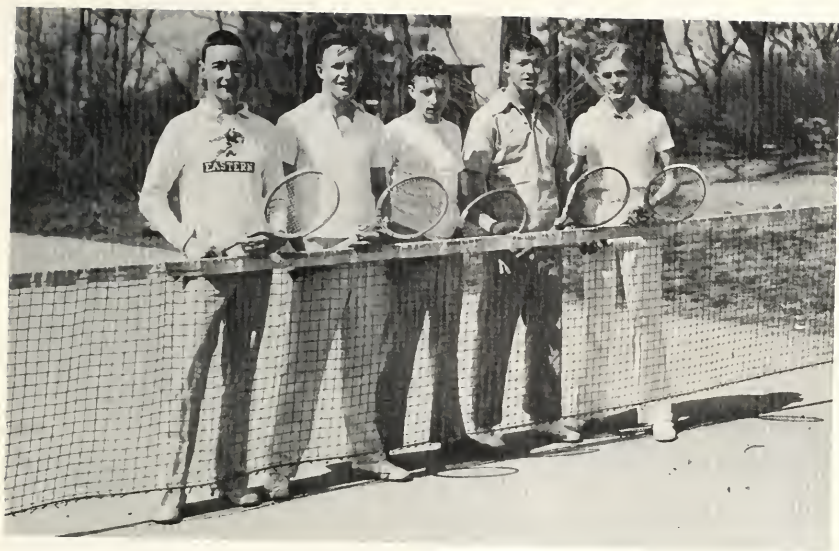
Top row—Whitaker, Stayton, Whitehead, Roth, Brock

## SWIMMING TEAM

Eastern's natators finished the season with a record of four victories and two defeats. The Maroon team won over Tusculum and Maryville and twice defeated Berea. The University of Kentucky was the only school to which they bowed in defeat.

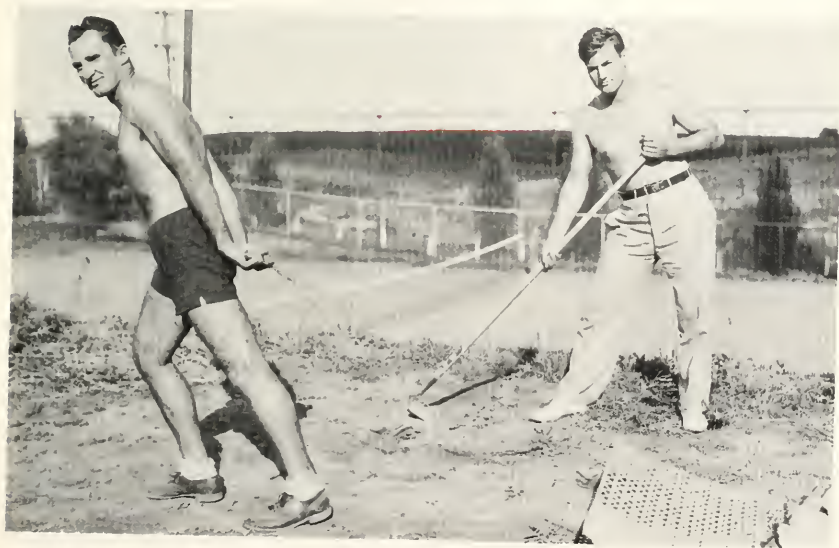
The good showing made by first-year men on the team along with the steady performance of last year's remaining letter-men gave Eastern a team that showed well in every event.

Competitive swimming requires every bit of the conditioning and practice necessary in the major college sports. Tribute is herewith paid to these men whose faithful training and many hours of practice were motivated by a true love of the sport.



Left to Right—Squires, Bright, Mills, Whitaker, Farris

## TENNIS



Walter Hill, Eastern athlete, won the light heavyweight championship of Kentucky in the Golden Gloves boxing tournament at Lexington. By his victory, Hill won several awards and the privilege to a trip to Chicago to participate in the National Golden Gloves tournament. He is shown at the right in a characteristic pose.



WALTER HILL-STATE LIGHT HEAVYWEIGHT BOXING CHAMP



BOXING ROOM



HANDBALL COURT



BASEBALL CONFERENCE



INTER-MURAL BASKETBALL WINNERS-Laurel County Team

# S n a p s





Fill 'er up!

After lunch

Mac pauses after plot  
to promote pep

Tsk! Tsk!

Time out for smiles

Pause for refreshments

'Member Memorial?

Where's Treadway?

Getting an eyeful

Rush week?

S N A P S H O T S



Ain't they purty?  
Affection or affectation?  
Before the game

Hot dog!  
Where's the rat?

It's a habit.  
Anderson and his squaw  
They can't fool us



Oh, send a tall and handsome  
man to Burnam or  
Sullivan Hall!

Two regular fellows  
and a Republican!

Here's to Eastern!

Lights!  
Camera!  
Action!

Posted!

A redhead plus a smile!  
That's something!

Not Puss in Boots—  
it's Rankin!

Register here, please!

**S N A P S H O T S**



Stinson and Little must think it's funny.

Northern Kentuckians get together

Bob and Ruth take a Sunday stroll

Beauts or Brutes?

Don't tell me. It's Ordick!

Roommates

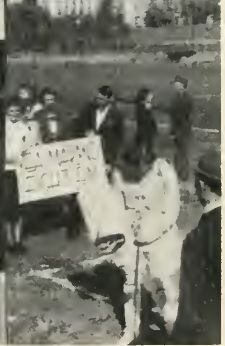
It's de' mob!

A Lucky Strike for Evans

It must be love!

S N A P S H O T S





Ain't she sweet?  
Sho' 'nuff!

He's way up thar!  
Just before the battle

Deck-o-ratin'!

Going hawg-wild!  
Prexy "aims" to beat Morehead

Wickersham gets nose!

Yeep!  
She struts for the Maroons

S N A P S H O T S



Don't look now Jim, but—!

Eastern's a Franly Kellege

Seein' is believing!

Vera, why don't you tell  
us these things?

A neat job  
of face-lifting

Beauty in the rah! rah! rah!

What is this? Anyhow?

Ain't misbehavin'

Unaware—  
Or is he absent-minded?

It's Dutch to us.

**S N A P S H O T S**



Richmond Day

Stag Party

Quiet please! Stafford's  
thinking!

Oh, well, somebody's  
gotta study

Call Ripley! Adams  
looks intellectual!

That old old look  
Response to a chapel  
speaker

S N A P S H O T S



Pratt and Kit make a hit

On the sentimental side

We'll give you Rina and lots  
of Hope

Go west young man;  
We'll stay with Eastern!

Putting all our yeggs in  
one basket

Waldo takes it on the chin

Lawson! It must  
be Tussey!

Miss Pop pauses for  
a pose

Not Mutt and Jeff—  
Nita and Sue

S N A P S H O T S



A Foxy snap  
Aw, heck! They gotta  
go to class

Such smiles should be  
preserved in alcohol

What? Still here?  
You say parkin'  
and I say sparkin'

They admire the Maroons  
while we admire them

The winnah!  
Gilbert bowls over  
for Bowles

What! No He-Males?

S N A P S H O T S

# Clubs





## MILESTONE STAFF

N. G. DENNISTON.....Sponsor  
 HIRAM M. BROCK, JR.....Editor  
 T. J. BLACK.....Business Manager

Jack Merlino, art editor; Oscar Estes, snapshot editor; Clyde Lewis, junior assistant editor; Leonard Stafford, military editor; James Brock, assistant military editor; Milton Feinstein, sports editor; William E. Adams, advertising manager; Park Smith, secretary; Eula Mae Nunnery, Ann Louise Stiglitz, Clyde Rouse, Wilson Durr, compositors; Ruth Lynch, Homer Ramsey, senior representatives; Marian Campbell, Frances Little, Carl Kemp, junior class representatives; Eldora Chamberlain, Ora Tussey, Donophan Burrus, sophomore representatives; Aileen Frame, Susan Biesack, Fred Darling, freshman class representatives



## MILESTONE STAFF

Jack Merlino	Susan Biesack	Oscar Estes	Ruth Lynch	Milton Feinstein
Frances Little	Leonard Stafford	Eileen Frame	Carl Kemp	Marion Campbell
Billy Adams	Marion Park Smith	Ora Tussey	Ann Louise Stiglitz	George Wilson Durr
Doniphon Burrus	Eula Mae Nunnery	Clyde Rouse		





EDWARD E. EICHER  
*Editor*

## **PROGRESS PLATFORM**

The staff of the 1939 Progress has endeavored to live up to its slogan, "The Voice of Eastern," by doing all within its power to secure certain fundamentals which it believes no school is complete without. The Progress favors: (1) A weekly school publication. (2) A modified system of student government. (3) A more active alumni association. (4) A greater Eastern.

Finneran



Coley



Abrams



Rodgers



Catlett



Vallandingham



Stiglitz



Mayes



BILLY ADAMS Business Manager

## EDITORIAL STAFF

Edward E. Eicher.....	Editor
Mary Agnes Finneran.....	Associate Editor
Mildred Coley.....	News Editor
Ruth Catlett.....	Feature Editor
Mildred Abrams.....	Society Editor
Jimmy Rodgers.....	Sports Editor

## BUSINESS STAFF

Billy Adams.....	Business Manager
Billy Bright.....	Circulation Manager
Mary Lida McIlvaine.....	Exchange Editor

Bright

Creager

Anderson



McIlvaine

Little

Bailey

Biesack

Oldfield



## LITTLE THEATRE CLUB

Founded 1918

Colors: Blue and Gold

Pearl Buchanan .....	Director
Leonard Stafford .....	President
Sue Toadvine .....	Vice-President
Helen Schorle .....	Secretary
James Stayton .....	Treasurer
Hiram Brock, Jr. ....	Business Manager
Walter Mayer .....	Stage Manager
Frank Wilcox .....	Sergeant-at-Arms

### MEMBERS IN FACULTY

Emma Y. Case                  Frances Mason                  Mary Floyd

### REGULAR MEMBERS

- |   |  |   |
|---|--|---|
| <ul style="list-style-type: none"> <li>*Mildred Abrams</li> <li>*Virginia Allen</li> <li>*Edwin Barnes</li> <li>Hiram Brock</li> <li>James Brock</li> <li>*Doris Burgess</li> <li>Jane Case</li> <li>*Phoebe Colbert</li> <li>Mildred Coley</li> <li>*Atlanta Cox</li> <li>*Nita Creager</li> <li>*Elizabeth Culton</li> <li>*Dorothy Dorris</li> <li>*Dorothy Dunaway</li> <li>*Lois Eich</li> </ul> | <ul style="list-style-type: none"> <li>*Oscar Eses</li> <li>*Mary Agnes Finneran</li> <li>*Mary Martha Gadberry</li> <li>James Gott</li> <li>Anna Graham</li> <li>Owen Gribbin</li> <li>Woodrow Guy</li> <li>Ed Harrell</li> <li>*Joyce Herman</li> <li>*John T. Hughes</li> <li>*Frances Jagers</li> <li>Grace Maggard</li> <li>*Doris Massey</li> <li>Walter Mayer</li> <li>Mary Frances Miller</li> </ul> | <ul style="list-style-type: none"> <li>*Ann Osborne</li> <li>*Mary Purdy</li> <li>*Mary Ellen Richmond</li> <li>Helen Schorle</li> <li>Leonard Stafford</li> <li>James Stayton</li> <li>*Pearl Stephenson</li> <li>*Ann Stiglitz</li> <li>*Robert Stinson</li> <li>Sue Toadvine</li> <li>*Raymond Van Winkle</li> <li>*Charles Warner</li> <li>Frank Wilcox</li> <li>Lorene Wilson</li> </ul> |
|---|--|---|

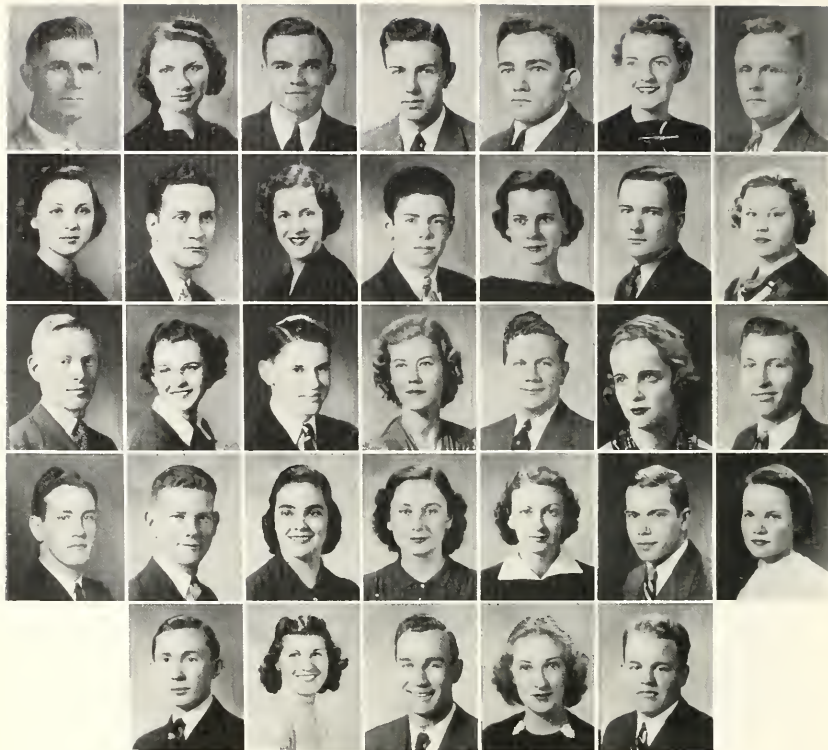
\*Indicates picture on opposite page.



## NEOPHYTES



Madelyn Cooke Theda Donavent James Squires Vivian Weber Jane Taylor Margaret Denny  
 Mary Stayton Francis Little Mary Billingsley Betty Sturm Dorothy Eggenpiller Vera Mayberry



## SIGMA TAU PI

W. J. Moore	Donald Stieger	John W. Moore	R. R. Richards
	Virginia Marz	Rich Collins	Helen Gaines
Jane Mills	Lucille Borders	Mildred Abrams	Vera Marz
	Bob Ruby	T. J. Anderson	George R. Powers
Edward Gabbard	Vernon F. Watson	Chas. R. Neal	Raymond Ruber
	Virginia Perraut	Dorothy L. Litsey	Marian Campbell
Wilson Ashby	Norma McCollum	Helen Beckner	Rebekah Vallandingham
	Harold Wicklund	Pearl Stephenson	John Suter
George W. Durr	Betty J. Sturm	J. C. Wash	Agnes Smith
			Joseph Shearer



## KAPPA DELTA PI

### OFFICERS

M. E. Mattox Counsellor	Lucile Nunnelly President	Fred Mayes Vice President	Martha Barksdale Rec. Treas.	Helen Schorle Program Chairman	Clyde Lewis News Rep.
Mary Kate Detherage	Clyde Rouse	Lona Turner	W. C. Jones	Sam Beckley	Grace Y. Williams
F. A. Engle	James Stanfield	Amanda Black	W. J. Moore	Mary Agnes Bohn	Emma C. Linley
Dorothy Dunaway	Saul Hounchell	Carl Edward Moore	Mildred Matherly	D. T. Ferrell	Raymond Ruber
Dorothy White	Margaret Louise Witt	Robert Dickman			

### AFFILIATED MEMBERS

H. L. Donovan  
Mary E. Barnhill  
Virgil E. Burns  
F. A. Engle

Allie Fowler  
Anna D. Gill  
Saul Hounchell  
L. G. Kenamer

Mary F. McKinney  
W. J. Moore  
Ellen Pugh  
Ruby Rush



## ALPHA ZETA KAPPA

Dr. Saul Houchell   Ruth Catlett   Lucile Nunnelley   Virginia Perraut   Jim Squires  
 Mary Thomas Stockton   Doniphan Burrus   Jean Caines   Lee Farris   Atlanta Cox  
 Louise Garland   Wilson Ashby   Doris Burgess   Burgin Benton   Mary Agnes Bohn  
 Margaret Colley   Roberta Riggs   Kathleen Stigall   Magdalene Bennett

### MEMBERS NOT HAVING PICTURES

Paul Brandes  
 Hayes Bunch  
 Olive Gabriel  
 A. J. Hauselman

Bonnie McKinney  
 Adele Rice  
 Elmore Ryle

Lona Turner  
 Guy Whitehead  
 Evelyn Zakem



## LE CERCLE FRANCAIS

Mildred Coley .....	President												
Dorothy White .....	Secretary												
Mary Kate Deatherage .....	Treasurer												
<table style="width: 100%; border: none;"> <tr> <td style="width: 25%;">Mary Agnes Bohn</td> <td style="width: 25%;">Helen Rozan</td> <td style="width: 25%;"></td> <td style="width: 25%;"></td> </tr> <tr> <td>Frances McCord</td> <td>Sarah Long</td> <td>Robert Ruby</td> <td>Lucille Borders</td> </tr> <tr> <td>Russel Green</td> <td colspan="3">Bess Alice Owens, Sponsor</td> </tr> </table>		Mary Agnes Bohn	Helen Rozan			Frances McCord	Sarah Long	Robert Ruby	Lucille Borders	Russel Green	Bess Alice Owens, Sponsor		
Mary Agnes Bohn	Helen Rozan												
Frances McCord	Sarah Long	Robert Ruby	Lucille Borders										
Russel Green	Bess Alice Owens, Sponsor												



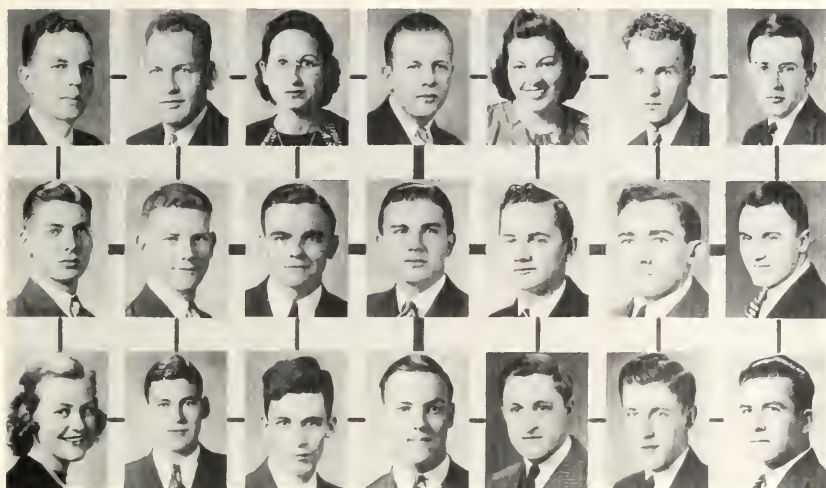


## CANTERBURY CLUB

Leonard Stafford	Mary Ellen Richmond, President	Robert Stinson
Mary Kate Deatherage, Treasurer	Ruth Catlett, Vice President	Raleigh Campbell
Norma McCollum	Margaret Helen Lewis	Lucille Marnita Bury
Nella Mae Bailey	Edith Haddix	Rebekah Vallandingham
Mr. Clark, Sponsor	Lucile Nunnelly	Vera June Mayberry
Amanda Black	Dorothy Lucile Litsey	Homer Ramsey
Hiram Brock, Jr.	Atlanta Mae Cox	Edward Eicher
Lucy Teater	Mary Agnes Bohn	

### MEMBERS NOT IN PICTURE

Olive Gabriel	Jay Stone	Leona Douglas
Emma Sams	Laurah O. Liddell	Francis Jones
Herbert Markam	Clifford Douglas	Willa Sue Richards



## MATHEMATICS CLUB

Smuth Park, Sponsor	Mildred Cable	Mary Billingsley	E. D. Jenkins, Sponsor
Aubrey Prewitt	Fred Mayes, President	Earl Brandenburg	
Chester Hill	Donald Steger	John Robinson	Robert Dickman
Harold Wicklund	James Rodgers	John Moore	
Mary Stayton	Bruce Barker	Walter Mayer	Raymond Huck
James Stayton	John Tollner	Willard Sandidge	



## STUDENT RELATIONSHIP COUNCIL

William Hagood   Jane Case   Robert Stinson   Francis Little   Dick Dickerson  
 Beatrice Welch   Richman Collins   Lucy Wallace   Arthur Wickersham   Marian Campbell  
 Donovan Cooper   Ruth Catlett   Eddie Eicher   Rebekah Vallandingham   James Squires  
 Evelyn Conrad   Marjorie Sears   Mrs. Emma Y. Case, Sponsor



## DORMITORY COUNCIL

Frances Jagers	Eleanor Claxon	Evelyn Marshall	Mary Helen Caywood	Magdalene Bennett
Mary Lida McIlvaine	Ruth Catlett	Frances McChord	Cuba Mullins	Fay Asbury
Elizabeth Flowers	Sue Toadvine	Phoebe Colbert	Mary Elizabeth Bell	
Mrs. Emma Y. Case. Sponsor				



## SCIENCE CLUB

Stanley Wilson	Joyce Hermann	Fred Mayes	Mary Frances Lehman	Dr. Herndon, Sponsor
James Stanfield	James Stayton	T. J. Black	Robert Dickman	John Robinson
Elvy Roberts	Wallace Brammell	James Rodgers	George R. Powers	Ray Huck
Evelyn Hume	Carl Moore	Russell Green	Lela Shearer	



## SCIENCE CLUB SNAPS



## ELEMENTARY COUNCIL

Miss Mae Hansen

Jean Young

Mary Purdy

Virginia Baber

Florence Champion

Alice Edelmaier

Marion Perkins

Ann Stigltz

Jane Case

Martha Logan Hammond

Mildred Matherly

Elaine Jones

Elizabeth Hancock

Emily Alexander

Virginia Root

Louise Craig

Gladys Perry Tyng

Rose Michelle McCawley

Mrs. Harold Rigby

Mildred Sovine

Virginia Allen

Jane Robinson

Flora Hines

Katherine Arnold



## ELEMENTARY COUNCIL

Helen Thomas

Emma Goodpaster

Doris Burgess

Evelyn Marshall

Lucille Martina Bury

Wilma Chaney

Eunice Pearl Woody

Anna Belle Hunter

Schoff Daugherty

Eula Fields

Mary Elizabeth Bell

Helen Schorle

Nancy Edwards

Pearl Francisco

Flora Mercer

Mary Frances Clark

Ruth Hammonds

Edith Haddix

Shirley Crites

Myrtle Perry





## Y. W. C. A. CABINET

Elizabeth Flowers    Mary Purdy    Ann Rogers (President)    Mary Francis Clark    Phoebe Colbert  
 Florence Champion    Elizabeth Hancock    Helen Thomas    Marie Hall    Emma Linley  
 Ann Louise Stiglitz    Mary Helen Caywood    Mary Bell    Virginia Allen    Dorris Million  
 Evelyn Conrad    Shirley Crites    Evelyn Marshall    Virginia Smith

## Y. W. C. A. MEMBERSHIP

Alexander, Emily  
 Allen, Virginia  
 Ammerman, Ruth  
 Bailey, Nell  
 Bell, Mary E.  
 Biesack, Susan  
 Billingsley, Mary  
 Black, Hazel  
 Black, Mary K.  
 Broyles, Marcena  
 Bury, Lucille  
 Bush, Neva  
 Butler, Barbara  
 Caines, Jean  
 Cameron, Alberta  
 Cammack, Martha  
 Campbell, Charlee Dee  
 Carlson, Virginia  
 Carroll, Dorothy  
 Cassady, Mary B  
 Caster, Betsy  
 Catlett, Ruth  
 Caywood, Mary H.  
 Chamberlain, Eldora  
 Champion, Florence  
 Clark, Billie  
 Clark, Mary F.  
 Claxon, Eleannr  
 Colbert, Phoebe  
 Conrad, Evelyn  
 Cole, Edith  
 Coleman, Jewel  
 Cooke, Madeline  
 Cooper, Virginia  
 Cornett, Lela  
 Cox, Frances  
 Crawford, Violet  
 Crites, Shirley  
 Davis, Maxine  
 Dawn, Mary  
 Deaton, Ely  
 De Vere, Ruth  
 Dicken, Vivian  
 Dillman, Esther  
 Dunavent, Theda E.  
 Eads, Mary Helen  
 Edwards, Josephine  
 Estridge, Margaret  
 Eubanks, Thelma  
 Farris, Iva  
 Felner, Lela  
 Flowers, Elizabeth  
 Flynn, Sue Helen  
 Fortner, Ruth

Fouts, Bettina  
 Frame, Eileen  
 Gann, Bonnie Jeanne  
 Garlan, Louise  
 Garriott, Trudy  
 Gortney, Mildred  
 Graham, Anna Meade  
 Greer, Ruth  
 Hall, Marie  
 Hancock, Elizabeth  
 Harlan, Mary Nell  
 Harrison, Helen  
 Hawkins, Alma  
 Haynes, Charlotte  
 Hereford, Pauline  
 Hobbs, Sally R.  
 Holland, Hattie  
 Howard, Mary Lee  
 Hunter, Anna Belle  
 Jenkins, Margaret  
 Jones, Frances  
 Kelly, Jane  
 Kenny, Mary  
 Kimball, Shirley  
 Leake, Felouise  
 Lee, Mary Louise  
 Lehman, Mary F.  
 Lemon, Doriselwood  
 Litsey, Lucille  
 Little, Frances  
 Linley, Emma  
 Lively, Marjorie  
 Long, Ann Evelyn  
 Lynch, Ruth  
 Marshall, Evelyn  
 Marz, Vera  
 Marz, Virginia  
 Massey, Doris  
 Matherly, Mildred  
 Maybury, Vera  
 McCoy, Hungaline  
 Million, Doris  
 Minch, Alma  
 Miracle, Niobe  
 Money, Jean  
 Moore, Nellie  
 Moreland, Glorina  
 Moreland, Ruby  
 Napier, Edith  
 Nealey, Mildred  
 Neikirk, Ruby  
 Nesbitt, Hieatt  
 Newberry, Virginia

Oldfield, Reno  
 Oney, Mary  
 Osborn, Ann  
 Osborne, Mildred  
 Partain, Jean  
 Perkins, Marion  
 Petty, Sally  
 Pratt, Dorothy  
 Purdy, Mary  
 Reed, Nantie Bell  
 Reynolds, Mildred  
 Rich, Mildred  
 Richards, Willa Sue  
 Richmond, Mary Ellen  
 Rivard, Marguerite  
 Roberts, Jean  
 Robinson, Jane  
 Rodgers, Mary Ann  
 Ross, Anna E.  
 Sears, Marjorie  
 Scott, Virgie  
 Shannon, Sheila  
 Shepherd, Lyda  
 Snowmaker, Gladys  
 Snow, Kathleen  
 Snyder, Ruth  
 Spears, Lena  
 Stamper, Lillian  
 Stennett, Ida Louise  
 Stiglitz, Ann  
 Stith, Virginia  
 Sturm, Betty  
 Taylor, Jane  
 Taylor, Leeta  
 Taylor, Mary Matt  
 Teator, Lucy  
 Teegarden, Christine  
 Thomas, Helen Irene  
 Tiller, Ruby  
 Toadvine, Sue  
 Turpin, Mildred  
 Ueltschi, Martha  
 Vallandigham, Rebekah  
 Walker, Dorothy  
 Walker, Mary Bates  
 Warford, Jane  
 Webb, Ethel  
 Weber, Vivian  
 Welch, Beatrice  
 Wood, Minnie Lee  
 Wood, Kathleen  
 Young, Jean  
 Zakem, Evelyn

Miss Mary Frances McKinney, Sponsor



## Y. M. C. A.

Dale Morgan

Schoff Daugherty

James Rodgers

George Wilson Durr

Harold Wicklund

George Powers

Wilson Ashby

Eugene Kennedy

Donald J. Steger

Russell Green

Richard Brown

Carl Kemp

Sam Beckley

Ewell R. Arrasmith

Guy Whitehead

Fred Mayes

Edward Gabbard

Joe Shearer



## WORLD AFFAIRS CLUB

Dr. L. G. Kenamer	Clyde Rouse	T. J. Anderson	Raymond Ruber
Sarah Long	Arthur Wickersham	Mildred Abrams	
Hazel Swartz	Emma Alice Goodpaster	Lucy Teater	Edith Haddix
Dewey Ball	Leonard Stafford	Schoff Daugherty	
Haram Brock, Jr	Doniphan Burrus	Donald Music	John Moore
Nancy Edwards	Alice Edelmaier	Virginia Allen	
Pearl Stephenson	Teddy Gilbert	Ed Eicher	George Wilson Durr
Ann Louise Stiglitz	Sylvia Jones	Mary Agnes Finneran	

### WORLD AFFAIRS MEMBERS NOT PICTURED

Jessica Floyd  
Clyde Lewis  
Carl Moore  
Dale Morgan

Lester Creech  
William Steele  
Edwin Barnes



## SOCIAL SCIENCE CLUB

Virginia Horne	Victoria Yates, Treasurer	Lucy Teater, Secretary	Kathleen Stigall
Charles A. Keith, Sponsor	Teddy Gilbert, President	Joe Shearer, Vice President	
Stanley Wilson	James Stanfield	Roy Drew	Raymond Ruber
Virginia Marz	Joyce Hermann	Agnes Smith	
Amanda Black	Mildred Abrams	Agnes Pendergrass	Mary Richmond
Wilson Ashby	Leonard Stafford	Homer Ramsey	Aubrey Prewitt
Eugene Cole	Ewell Arrasmith	George Durr	
Wilson Ashby	Leonard Stafford	Homer Ramsey	Aubrey Prewitt
Myrtle Perry	Marguerite Rivard	Helen Gaines	
Dorris Million	Hazel Swartz	Pauline Jones	Martha Hammond
Morris Hogge	Homer Davis	Burgin Benton	



## LIBRARY STAFF

James Rodgers   Doriselwood Lemon   Atlanta Mae Cox   Peggy Denny   Kathleen Snow  
 Isabell Bennett   Sallie Holland   Lucy Teater   Francis Mason   Mary Ellen Richmond  
 Mrs. Guy Whitehead   Helen Thomas   Marguerite Rivard   Emily Alexander   Betsy Anderson  
 Ed Gabbard   Helen Schorle   Betty Sturm   Mary Floyd   James Squires



## HOME ECONOMICS CLUB

Ruth Dix, Sponsor

Ruth Lynch, President

Gertrude Hahn

Hieatt Nesbitt

Evelyn Hume

Sallie Petty

Theda Dunavent

Virginia Peed

Lucy Wallace, Vice President

Gladys Bowles

Betsy Arbuckle

Ruth Marcum

Lois May Eich, Club Reporter

Fay Asbury, Secretary

Mary R. House

Dorothy Eggenspiller

Eldora Chamberlain

Cuba Mullins

Nina Lee Stinette

Neva Gayle Bush

### THOSE WITHOUT PICTURES

Mayme Bayles  
Eula B. Barbe  
Martha Berlin  
Dorothy Carroll  
Versa Collins  
Frances Collis  
Heloise Cox  
Jean Crawford

Haatt Nesbitt  
Lucille Creech  
Martha Eubank  
Sarah Fathergill  
Lelia Feltner  
Anna Marie Hogg  
Mary Lee Howard

Drucilla Wilson  
Carrie Faye Jayne  
Jane Kelly  
Shirley Kimball  
Jane Kincer  
Emogene Lucas  
Mildred Neely

Mary Oney  
Louise Parsons  
Lydia Ramsey  
Ethyl Salver  
Lucy Shadon  
Sheila Shannon  
Helen Thomas



## HOME ECONOMICS CLUB

Drue Gray  
 Alma Minch  
 Sula K. Hord  
 Anna Long  
 Lela Cornett  
 Emma Linley  
 Ruby Keeton

Frances Little  
 Pearl Stevenson  
 Nina Kanatcar  
 Fanny Le Master  
 Frances Jaggars  
 Evelyn Conrad  
 Park Smith

Edith Gabbard  
 Ada K. Wash  
 Lorraine McKinney  
 Jean Sweeney  
 Ruth Greear  
 Iva Farris





## BAND

John R. Kinzer ..... Director  
 Billie Clark ..... Drum Major  
 Pearl Stephenson ..... Sponsor

Fifth row—L. Durham, B. Robertson, J. Wornock, W. Strunk, H. Srygley, H. Winburn, R. Walker, E. Culton, W. Bailey, John R. Kinzer, Director

Fourth row—H. Hunter, D. Kennamer, R. Brown, J. Jones, G. Hatfield, G. Miller

Third row—J. Fife, F. Johnson, E. Baxter, M. Walker, R. Ledford, J. Willis, A. Klein, V. Taylor, A. Yelton, M. Anderson, M. Black, D. Brock

Second row—L. Kennamer, M. Wood, D. Burgess, M. Ransom, C. Neal, J. Booth, J. Tollner, M. Turpin, D. Burrus, D. Anthony, J. Walters, W. Hale, V. Shetler

First row—P. Stephenson, J. Pearson, E. Sic, R. Neikirk, J. Jones, F. Kennamer, H. McCoy, D. Dorris, S. Shannon, H. Farris, J. Taylor, J. Ballew, A. Smith, C. Karrick, T. Keltner, B. Clark



## NORTHERN KENTUCKY CLUB

First row—Sam Beckley, Sponsor: Evelyn Zakem, Herb Hunter, Evelyn Marshall, Don Stegar, Doris Massey, Elmore Ryle, Shirley Crites, Virginia Marz, Betty Strum, Frances Little, Clyde Rouse

Second row—Paul Robinson, Jim Hennessey, George Robert Powers, Mildred Rich, Marguerite Rivard, Evelyn Conrad, Ray Kornhoff, Virgil Taylor, Nita Creager, Jean Porter

Third row—Louis Lee Phillips, Walter Mayer, Vivian Weber, Dorothy Larle, Jeane Roberts, Virginia Allen, Edna B'Hymier

Fourth row—Mary Helen Caywood, Mary Dawn, Madelynne Cook, Lillie Taylor, Mary K. Black, Mary Louise Lea, Mary Agnes Finneran, Clark Gray, Jack Spratt, Clyde Lewis, Alan Yelton, Lois Eich

Fifth row—Peck Perry, Jean Sweeney, Dick Wetzel, Kathleen Snow, Esther Dillman, Ruby Hughes, Vera Mayberry, Vivian Dicken, Alice Kennelly, Annette Clutes, Susan Biesack, June McCarthy, Phyllis Satterlee, Ray Nelson

Sixth row—Les Roth, Bob Dickman, Charles Bowling, Mary Ellen Richmond, Joyce Hermann, Thelma Eubank, Lena Spears, Dorothy Dunaway

Seventh row—H. Ray Hauselman, Eddie Eicher, Helen Schorle, Len Stafford, Bob Ruby, Reno Oldfield, Jean Young, Ray Huck, Jimmie Rodgers, Vera Marz

Eighth row—Cliff Tinnell, Homer Osborne, "Fox" DeMosey, Les Voshell, Dale Morgan, Harry Walker



## UPPER CUMBERLAND CLUB

Teddy C. Gilbert..... President  
 Iva Farris, Georgia Gilly, Virginia Root, W. G. Gilbert, and  
 Sarah Brooks ..... Vice President  
 Wilma Allen ..... Secretary-Treasurer  
 Dr. F. A. Engle..... Sponsor

First row (left to right)—Georgia Gilly, Lillian Lewallen, Pauline Cawood, Virgie Scott, Frances Cox, Fred Allen Engle, Kathleen Clark, Pauline Jones, Sarah Brooks, Ada Cornelius, Grace Williams

Second row—Dr. F. A. Engle, Mary Billingsley, Iva Farris, Mary Matt Taylor, Bettina Fouts, Jean Mills, Charles Bowling, Imogene Isaacs, Pearl Woody

Third row—Aubrey Prewitt, Hope Jones, Alene Lawson, Virginia Root, Della Hopper, Durward Strunk, Milus Skidmore, Victor Sams, Louise Holman

Fourth row—Charles McPhetridge, Lee Farris, Harold Mills, Wilma Selvey, Irene Evans, Gilbert Miller

Fifth row—W. G. Gilbert, Edythe Rogers, Teddy Gilbert, Ike Hubbard



## CATHOLIC CLUB

Virginia Perraut ..... President  
 Ray Huck ..... Vice President  
 Ann King ..... Secretary-Treasurer  
 Miss Geneva McCarthy ..... Sponsor

Front row—King Hickey, Ella Hill, Albert McCarthy, Charles Schuster, Walter Mayer, Ray Huck, Eddie Downing, Jean Sweeney, Rose McCawley, Marjorie Kelsch

Second row—Mary Gratzer, Frances Costanzo, Rena Gonzales, Virginia Perraut, Frank Flanagan, Mary Purdy, June McCarthy, Ann King, Mary Jo Leeds, Betsy Caster



## MEN'S GLEE CLUB

First row—E. Pearson, J. Jones, W. Gilbert, H. Dunn, R. VanWinkle, R. Radcliffe, J. Squires, H. Wicklund, A. Wickersham, D. Allen, J. Tollner, B. Eaton, D. Sparks, D. Morgan

Second row—J. Bell, A. Klein, L. Poynter, D. Strunk, J. Prater, D. Burrus, J. Brock, H. Hunter, T. Gilbert, O. Estes, G. SeEVERS, B. Bright, W. Moore

Third row—W. Chasteen, C. Neal, V. Taylor, D. Anthony, C. Rouse, D. Kennedy, J. Hughes, P. Brandes, C. KARRICK, F. Wilcox, T. Bonny.

Fourth row—J. Walker, R. Goodlett, W. Holton, T. Keltner, J. Spratt

Donovan Cooper, Accompanist



## MADRIGAL CLUB

First row—Mildred Culley, Dotti Brock, Lucille Borders, Wilanna Hendron, Nita Creager, Kathleen Clark, Mary Helen Caywood, Edna Mae Harrison, Billie Clark, Agnes Smith, Lois Eitch, Helen Schorle, Mary Martha Gadberry, Sarah Long, Virginia Suth

Second row—Marcella Simmonds, Dorothy Pratt, Katherine Arnold, Rina Gonzales, Dorothy Dorris, Florence Champion, Elizabeth Flowers, Rebekah Vallandingham, Doris Massey, Peggy Denny, Flora Kenamer, Imogene Trent, Ruth Walker, Mildren Richardson

Third row—Elizabeth Culton, Betty Sturm, Martha Eubanks, Mary Agnes Finneran, Dorothy Payne, Alice Edelmaier, Frances Little, Mildred Sovinc, Margaret Louise Culton, Helen Klein, Vivian Weber, Marie Hughes, Shirley Crites, Lucille Bury, Dorothy Baxter (accompanist), Miss Blanche Sams (sponsor)



## BAPTIST STUDENT UNION

Seated—Anna Frances Todd, Atlanta Cox, Beatrice Welsh, James Stanfield, Louise Garland, Evelyn Marshall, Willa Sue Richards

Standing—Kathleen Clark, Rebekah Vallandingham, Elizabeth Flowers, Virginia Root, Charles Terry, Nella Bailey, Marie Hall, Mrs. Clyde Breland, Irvin Baker, Rev. Hewlett, Dr. Fred Engle, Fayette Wellman, Eugene Kennedy, Billy Eaton



## BIG SANDY CLUB

First row—Ruth Murray, Louise Hobson, Nina Lou Fields, Dick Dickerson, Virginia Newberry, Alvin Spears, Clara Newsome, Pauline Hereford, Dr. Cuff

Second row—Fannie Le Masters, Hazel Hill, Orpha Jones, Versa Collins, Carrie Faye Jayne, Robert Radcliff, Olive Barrett

Third row—Iris Dotson, Ella Stapleton, Eloise Williams, Anna Ross, Chester Hill, Jewel Coleman, Nelle Bailey

Fourth row—Donald Music, Francis Moles, Loraine Bower, Jewel Clark

Donald Music .....	President
Pauline Hereford .....	Vice-President
Dick Dickerson .....	Secretary
Chester Hill .....	Treasurer





## INDUSTRIAL ARTS CLUB

Left to right, front row—Mr. Deniston, Dudley Sparks, Claude Howard, Joe Morgan, Cecil Karrick, Dabney Doty, Ernest Snyder, Mr. Whalin

Second row—T. J. O'Hearn, Homer Davis, Otis Bastin, J. W. Mullikin, Raymond Van Winkle, Carl Kemp, James C. Wash

Third row—Fayette Wellman, Tilton Bannister, Alden Zaring, Donald Music, Willard Sandidge

Not in picture—Winston Strunk, Travis Combs, Fred Darling, Woodrow Tuman, Wyatt Thurman, Harold Windburn, George Ordich, Robert Dodson



## OWSLEY, JACKSON, CLAY, LEE, BREATHITT CLUB

First row—Charles Farmer, Sally Hobbs, Lyndon Anderson, Nina Sparks, Dorothy Smith, Anna Langdon, Cledith Marcum, Martin Roscoe Sams

Second row—Tom Combs, Harry Lucas, Clarence Combs, Don Reynolds, Heila Lakes, Ethel Pope, Bertha Brewer

Third row—John Palmer, Arthur Lucas, Eugene Cole, Charlotte Baker, Jewel Jones, Reba Lee, David Cunnigan

Fourth row—Roy Cole, Fannie Smith, Marie Isaacs, Tressie Jones, G. W. Davidson, Emit Spivey, Ethel Brockman, Agnes Pendergrass

Fifth row—Wendell Carmack, Mrs. Hazel Hensley, Mr. Henry Hensley, Stella Hughes, Bessie Cornett, William Metcalf, Alvis Coyle, Steve Crawford, Bruce Barker

Sixth row—Ralph Sizemore, Dr. W. J. Moore, Bellie Brown, Dr. Saul Houchel, Stanley Reynolds, Von Watts, Crut. Sebastian, Raleigh Campbell, Fred Mason



## KYMA

Front row, left to right—William Adams, Nita Creager, Pauline Berryman, Mildred Gortney, Marion Perkins, Frances Little, and Bill Lominac

Second row—Carolyn Brock, Sue Toadvine, Mary Agnes Finneran, Vivian Weber, Ann Stiglitz, and Elizabeth Cherry (sponsor)

Third row—James Squires, Paul Brandes, James Stayton, Robert Stunson, John Hughes, Arthur Wickersham, and Frank Wilcox



## PHYSICAL EDUCATION CLUB

First row—Thurman, Mayer, Rose, Tussey, Lewis, Mowat, Combs, Ordich

Second row—Perry, Kemp, Locknane, Darling, McWhorter, Perry, Davis

Third row—Morgan, Osborne, Kornoff, Voshell, Abney

Fourth row—Rankin (sponsor), Hill (president), Hennessey, Tinnell, Elder, Feinstein

Fifth row—Shetler, Yeager, Darling, Wilson, Lydey, Demoisey



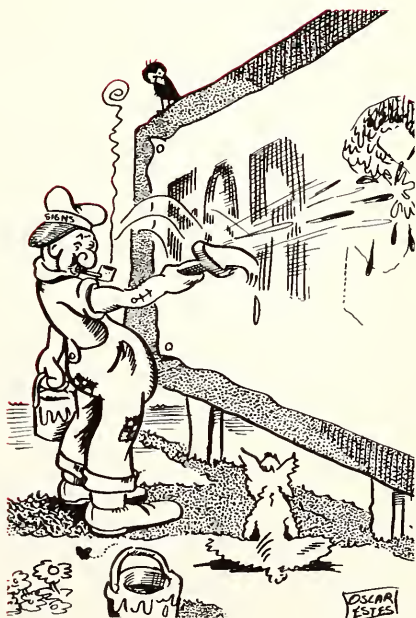
## ART CLUB

Front row—Ruth Hammonds, Willa Bailey, Sula Hord, Gertrude Hahn, Louise Craig, Allie Fowler

Second row—Pearl Woody, Maude Gibson, Virginia O'Rear, Robt. Sentez, Lois Eich, Mildren Richardson

Third row—Agnes Pendergrass, Ewell Arrowsmith, Jack Merhino, Carolyn Brock

# Advertising



---

*YOU NEEDN'T BE AN ECONOMIST TO KNOW  
THAT YOU ACTUALLY SAVE MONEY IF YOU*

**A**LWAYS **B**UY AND SELL FOR **C**ASH  
—IT'S AS SIMPLE AS YOUR A, B, C'S!



ALWAYS BUY AND SELL FOR CASH—  
IT'S AS SIMPLE AS YOUR A, B, C'S!

When you buy from Penney's, the major portion of every dollar goes for the merchandise you purchase . . . you don't pay for frills like free delivery, fancy stores, and credit departments. You pay for finer quality and better workmanship! You, personally, can't run up to New York to see what's newest and best when you want to buy — BUT Penney's can! We have a large and intelligent buying staff who constantly scout the market and rush the newest fashions to your nearest Penney Store. Yes, Penney's buys and sells for cash. A child would know that means savings to you!

**P E N N E Y ' S**

**J. C. PENNEY COMPANY, Incorporated**

---

---

HAM  
BACON  
LARD  
SAUSAGE

THE  
H. H. MEYER PACKING CO.  
Cincinnati, Ohio



---

WE'RE  
BREAKING OUT!

with new, smart style ideas.  
Campus clothes for the college man,  
campus footwear for the college  
girl.

**STANIFER'S**

"Smart Styles"

Main at Second

Richmond



---

HELLO THERE

*Chat and Spat on Your Coke  
at the*

**GLYNDON DRUG STORE**

We wipe our tables for  
the students only  
*Our Specialty is Our*  
SODA FOUNTAIN

*See You at The Glyndon Drug*

---

*We Furnish*

FRESH FRUITS  
*and*  
VEGETABLES

**JOSEPH PAPANIA & CO.**

311-319 Vine Street

Lexington

Kentucky

---





“Since 1900”

## **RICHMOND GREENHOUSES**

*FLOWERS FOR ALL OCCASIONS*

Students and Classes Always Welcome

*Greenhouses — Salesroom*

West Main Street

Richmond, Kentucky

Phone 188

J. P. REISHPFARR, Prop.

---



FLOOR OF TOBACCO AT HOME HOUSE

THE HOME TOBACCO WAREHOUSES

*Are*

WHERE THE BEST GRADES OF LEAF SELL HIGHEST

*And*

WHERE THE LOW GRADES SELL BETTER

**Home Tobacco Warehouse Co.**

W. E. LUXON

I. M. HUME

PAUL BURNAM

Richmond, Kentucky

---

---

**THE COLLEGE BOOK STORE**

*Owned and Operated by  
The Institution*

Books, Stationery, Shaeffer Fountain Pens  
Official Emblem Jewelry

*Special Orders Made for Students  
for Articles Not Carried  
in Stock*

---

*Compliments  
of*

**THE RACKET SHOP**

Here is a Welcome Retreat to  
all Eastern Students who are  
in the "dog-house," as to what  
to give, and when to give it.

*Let*

*MRS. A. J. SUIT, Prop.  
Fix Things Up*

---

**MADISON GROCERY CO.**

WHOLESALE GROCERIES

*"We Sell Today To Sell Tomorrow"*

We Carry Stock of

STAPLE AND FANCY GROCERIES

Phone 116

Richmond, Kentucky

---

**H. W. NOLAND**

COAL — FEED — SEED  
BUILDING MATERIAL

East Main Street

Phone 57

Richmond, Kentucky

---

---

*Compliments  
of*  
**BEDFORD'S  
SERVICE STATION**  
SEIBERLING TIRES  
U. S. L. BATTERIES  
Big Hill Avenue  
Phone 412 Richmond, Ky.

---

*Compliments  
of*  
**ARNOLD, HAMILTON  
& DYKES**  
WHOLESALE GROCERS  
Richmond, Ky.  
*Quality — Service*

---

**ROBINSON & TURLEY**  
ACME PAINT — COAL  
UBIKO FEEDS — SEEDS  
BUILDING MATERIAL  
Warehouse & Yards Estill Ave.  
Phone 113

---

*Compliments  
of*  
**THE  
EASTERN COFFEE SHOP**  
*A Fine Place to Bring Your Friends  
Fine Dinners a Specialty*

---

*Compliments  
of*  
**CORNETT'S DRUG STORE**  
J. T. HINKLE WOODROW HINKLE  
Richmond, Ky.

---

RICHMOND  
*Home  
of*  
ZARING'S PATENT FLOUR  
*Made by*  
**ZARING'S MILL**  
Use Zaring's Patent Flour

---

*For High Quality  
Shoe Repair Service  
Go To*  
**CITY SHOE SHOP**  
West Irvine Street  
Next Door to Fire Department  
Richmond, Ky.  
EDGAR EMBRY, Prop.

---

*Compliments  
of*  
**IDEAL RESTAURANT**  
Main Street

---

---

# BURNAM & HARBER

*"The First Floor Insurance Agency"*

McKee Building  
Richmond, Kentucky

Phone 186

SAM P. BURNAM

W. OVERTON HARBER

---

*Compliments  
of*

**BOHON STORES CO.**

Phone 343

Richmond

**J. N. CULTON & CO.**

Groceries and Meats

---

---

**State Bank**  
**and**  
**Trust Company**

RICHMOND, KENTUCKY

*Member Federal Deposit Insurance Corporation*

---

**E. V. ELDER**

RICHMOND'S LEADING DEPARTMENT STORE

Nationally Advertised Lines

FOR MEN

Hyde Park, Griffon Clothes; Arrow Shirts; Grayco Ties;  
Florsheim, Friendly Shoes

FOR WOMEN

Parkmoore Coats; Wayne-Maid Dresses; Admiration Hosiery;  
Red Cross, Vanity Footwear

COMPLETE DRY GOODS DEPARTMENT

*Shop at Elder's and Save*

---

**PAUL JETT**

*Formerly*

**(Rice & Arnold)**

**THE REAL CAMPUS SHOP**

Stetson Hats — Numm Bush Shoes — Botany Ties

B. V. D. Underwear

Fine Custom Tailoring

Humming Bird Hosiery

—also—

Selby Styl-EEZ Shoes for Women

The MAIN Shop on MAIN Street

---

---

Compliments  
of  
**J. J. NEWBERRY COMPANY**  
Quality Merchandise at Economy Prices

---

*The Boys Always Gather at*  
**DOC'S**  
Right Across from the Courthouse  
*for*  
**CHILI**

---

Compliments  
of  
**WOODS**  
**MOTOR COMPANY**  
Phone 128                  Richmond, Ky.

---

Compliments  
of  
**THE ROSE SHOP**  
*"Exclusive But Not Expensive"*  
228 Main Street

---

**MADISON LAUNDRY &  
DRY CLEANING**  
*Special Attention to Parcel Post  
Cleaning and Laundry*  
Phone 352, 353

---

Compare Our *Prices* . . .  
Compare Our *Quality* . . .  
Figure the *Savings* . . .  
then figure in terms of *service*  
and *satisfaction* just what you  
save when you buy here.

CASH DEPARTMENT STORES

**LERMAN BROS**

*"Known for Better Values"*

---

---

*Compliments  
of*

**KENTUCKY ICE CREAM CO.**

ALL PASTEURIZED GRADE A PRODUCTS

*Fountain Service*

MADE ITS WAY BY THE WAY IT'S MADE

Phone 420

Richmond, Kentucky

---

*Compliments  
of*

**A. L. COUPE CONSTRUCTION CO.**

GENERAL CONTRACTORS

Louisville, Kentucky

---

*Compliments  
of*

**McCHORD ELECTRICAL CO.**

ELECTRICAL CONTRACTING  
AND ELECTRICAL SUPPLIES

*Richmond, Kentucky*

---





---

**WITT MOTOR COMPANY**

121-123 E. Main Street

*Sales and Service*

Richmond, Ky.

---

**STOCKTON PHARMACY**

N. G. Tood and J. C. Davis,  
*Owners*

*The Logical Place for Student  
Headquarters*

Lucien Lelong Perfumes

Whitman Candies

Yardley & Dubarry Agency

Phones 49 and 56

*Compliments of*

**C. C. TODD**

GOOD GULF SUPPLIES

*"Back of Memorial"*

---

*Compliments  
of*

**DIXIE DRY CLEANERS**

HATS BLOCKED

*Pressing While You Wait  
Cleaning of All Types*

Phone 7

---

**Madison - Southern  
National Bank & Trust  
Company**

Richmond, Kentucky

MEMBER FEDERAL DEPOSIT INSURANCE CORPORATION

---

---

**RICHMOND MOTOR CO.**

DODGE AND PLYMOUTH

*Good Used Cars*

"The Post Office Is Next Door"

---

**O. G. ESTES**

*Expert Watch*

*and*

*Jewelry Repairing*

Next Door to Postoffice

---

**MARCUM'S**

**BILLIARD PARLOR**

*Newly Equipped*

Phone 807

Richmond

---

**DUGAN APPLIANCE CO.**

*"Full General Electric Line"*

Phone 114

---

**H. M. WHITTINGTON CO.**

JEWELERS

*"Gifts That Last"*

Phone 756

North Second St.

Richmond, Ky.

---

*Compliments*

*of*

**F. W. WOOLWORTH CO.**

Richmond, Ky.

---

**JOE'S DELICATESSEN**

*Full Line of Good Things for*

*Lunches and Parties*

RESTAURANT AND SODA FOUNTAIN

Phone 58

Richmond, Ky.

---

**WESTERN AUTO  
ASSOCIATE STORE**

*Home Owned by*

**F. R. CLARKE & SON**

*"Everything for the Automobile  
for Less"*

Richmond, Ky.

---

---

*This Book is bound in a*  
**Kingskraft Cover**



*Manufactured by the*  
**KINGSPORT PRESS, Inc.**  
**Kingsport, Tenn.**



**PRODUCERS of FINE COVERS**  
**for ALL PURPOSES**

---

*Introducing ...  
Mr. Popularity  
(Class of 1959)*



*McLaughlin  
Richmond Ky.*

---

*Creators and Producers*  
*of the*  
*1939*

**MILESTONE**



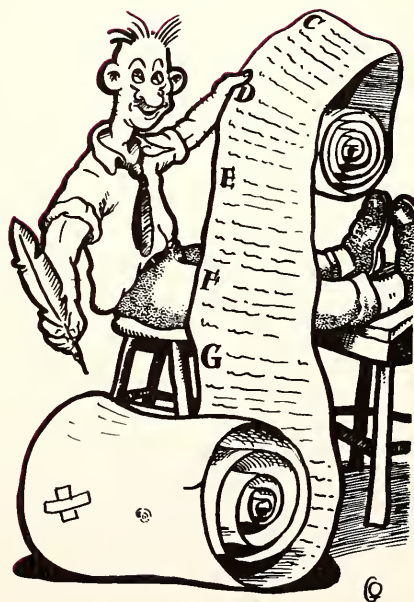
**FETTER PRINTING COMPANY**

INCORPORATED

**LOUISVILLE, KENTUCKY**

---

# Directory



# DIRECTORY

## SENIORS

### A

- Abrams, Mildred Frances—Richmond 152,  
151, 137, 136, 37  
Albright, Guy—Brodhead  
Alexander, Emily Virginia—Hustonville 153,  
146, 32  
Allen, Virginia Lucinda—Butler 151, 148,  
146, 135, 43  
Anderson, Betsy Richards—Shawhan  
Arnold, Katherine—Falmouth 146, 38  
Arrasmith, Ewell Roberts—Bethel 152, 150,  
48  
Ashby, Wilson Thomas—Shelbyville 152,  
150, 138, 136, 49  
Ashcraft, Ohna—Richmond 34

### B

- Baber, Virginia Dell—Winchester 146, 47  
Bailey, Nella Mae—Paintsville 140, 36  
Bailey, Willia C.—Burgin 37  
Ball, Dewey George—Whitley City 151  
Barker, Bruce Wilson—Travelers Rest 141, 34  
Barrett, Nora—Pikeville  
Barrett, Olive E.—Pikeville  
Beckner, Helen—Harlan 136, 34  
Benton, Burgin L.—Richmond 152, 138, 35  
Black, Amanda L.—Springfield 152, 140,  
138, 38  
Black, T. J.—Richmond 144, 130, 47  
Bowling, Charles—Bert 33  
Brandenburg, Earl—Millers Creek 141, 49  
Brock, Hiram Montgomery, Jr.—Harlan 151,  
140, 134, 46, 130  
Brockman, Ethel—Sand Gap 33  
Brown, Stevie Thompson (Mrs)—Richmond  
Bunch, Hayes Thomas—Wallins Creek  
Burgess, Doris Lynn—Paint Lick 147, 138,  
135, 44  
Burrus, Frances—Newby 33  
Burrus, Ruby—Richmond 44

### C

- Campbell, Raleigh Chester—Bernice 140  
Canter, Richard Lee—Richmond 143  
Carr, Ruth—Panola 34  
Case, Jane Young—Richmond 146, 142,  
135, 46  
Casey, Mary Elizabeth—Corbin  
Champion, M. Florence—Salvisa 148, 146, 49  
Chapman, George—Lovely

- Clark, Bessie Lanter (Mrs.)—Richmond 48  
Clark, William Vernon—Mt. Vernon  
Cole, Eugene—Heidelberg 152, 34  
Collins, James Richman—Maysville 136, 32  
Collins, Versa Beverly—Lackey  
Combs, Ernest Graham—Hazard  
Cooper, Douglas Elhoff—Portsmouth, Ohio  
41  
Cornelius, Ada Belle—Mershons 48  
Coyle, Alvis Newton—Fostown  
Craig, Louise—Ghent 146, 39  
Creech, Lester—Cumberland  
Culton, Margaret Louise—Richmond 41  
Cunogin, David Hurley—McKee

### D

- Daugherty, Shoff—Monticello 151, 150,  
147, 44  
Davidson, Estill—Annville 44  
Davis, Homer Claxton—Ezel 152, 37  
Deatherage, Mary Kate—Richmond 140, 139,  
137  
Denney, Wise (Mrs.)—Richmond  
Drew, Roy Irvine—Berea 152, 49  
Durr, George Wilson—Harrodsburg 152,  
151, 150, 136, 131, 47

### E

- Edelmaier, Alice Marie—Covington 151, 146,  
41  
Edwards, Nancy Reva—Richmond 151, 147,  
43  
Eich, Lois May—Bellevue 154, 136, 45  
Eicher, Edward E.—Ft. Thomas 151, 142,  
140, 38  
Elder, Joseph Marcus—Grand Junction, Colo.  
Elliott, Evelyn Mildred—Irvine  
Estridge, Lorene—Stanford

### F

- Faris, Christine Elliott—London  
Farmer, Alice S.—McKee  
Farmer, C. Luther—McKee  
Feinstein, Milton David—Corbin 131, 43  
Feltner, Leila—Hyden  
Fife, Paul Burnam—Richmond 35  
Forbes, Wallace Gribben—Richmond  
Francisco, Pearl—Ash Camp 147, 39  
Frost, Graydon Moore—Conkling 35

### G

- Gabbard, Edith Mae—Boonesville 155, 41  
Gatliff, Ellen Kathryn—Mt. Vernon

Gilbert, Teddy Curtis—Pineville 152, 151, 36  
Gilbert, William G.—Black Water 140  
Goodpaster, Emma Alice—Owingsville 151,  
147, 36  
Green, Allen Russell—Winchester—150, 144,  
139, 43  
Gregory, David—Mt. Vernon

## H

Haddix, Edith Jean—Richmond 151, 147,  
140, 39  
Hagood, William J.—Corbin 142, 36  
Hahn, Gertrude Powell—Richmond 154, 32  
Hall, Stella—Fusonia 32  
Hammond, Martha Logan—Pleasureville  
146, 48  
Hammonds, Edmond—Paint Lick  
Hammons, Ruth Allene—Richmond 147, 42  
Hancock, Elizabeth Neale—Finchville 148,  
146, 33  
Hellard, Lillian Gertrude—Moore's Creek  
Hensley, Hazel Payne—Laurel Creek  
Hensley, Jean Benneh—Berea  
Hermann, B. Joyce—Newport 152, 144,  
135, 32  
Hill, Walter Robert—Pineville  
Hines, Flora—Somerset 146, 41  
Hogg, Morris B.—Mayking 152, 42  
Hogge, Ray—Cranston 40  
Holton, Walter Tilghman—Trinity  
Hord, Sula Karrick—Richmond 155, 44  
Horne, Virginia Lee—Paintsville 152, 42  
House, Harvey Douglas—Red House  
Hubbard, Ike Cobb—Black Water 32  
Huck, Raymond Joseph—Cold Spring 144,  
141, 33  
Hughes, Henry A.—Richmond  
Hume, Evelyn Delbert—Mackville 154, 144,  
40  
Hunter, Anna Belle—Nicholasville 147, 34

## J

Jenkins, Douglas Haig—Million  
Jett, Sam—Richmond  
Johnston, Nelle—Berca  
Jones, Frances Willard—London 36  
Jones, M. Elaine—Frankfort 146, 33  
Jones, Pauline—Million 152, 44  
Jones, Rector Alson—Dreyfus

## K

Karrick, Cecil Charles—Richmond 48  
Keeton, Melvin—Daysboro 44  
King, Lester H.—Whitley City

## L

Lee, Elmer—Four Mile  
LeMaster, Fanny—Riceville 155  
Lewis, Cleda Lee—Royster  
Lewis, Margaret Helen—Elkatawa 140, 44

Limb, Lonnie—Salt Lake City, Utah 37  
Linley, Emma Clarine—Cynthiana 155, 148,  
137, 41  
Litsch, Dorothy Lucile—Springfield 140,  
136, 37  
Lively, Marjorie—Ravenna  
Luman, Charles Woodrow—Patriot, Ohio  
Lydey, Woodrow Wilson—Tiffin, Ohio  
Lykins, Benjamin W.—Edna  
Lynch, Ruth E.—Earnestville 154, 131, 35  
Lyon, William H.—Paintsville

## Mc

McCawley, Rose Michelle—Springfield 146,  
45  
McChord, Frances B.—Maysville 144, 38, 36  
McCullum, Norma Frances—Richmond 140,  
136, 45  
McFerron, Ruth Miller—Mt. Vernon

## M

Marcum, Addie Ruth—Big Creek 154, 36  
Marcum, Herbert Clay—Big Creek  
Masters, Mabel Ocelia—Million 36  
Matherly, Mildred Juanita—Richmond 146,  
137, 32  
Mauney, Beulah—Corbin  
May, Mildred L.—Lebanon  
Mayes, Fred M.—Mt. Sterling 150, 144, 141,  
137, 41  
Maves, Wilson—Arnett  
Mercer, Flora—Munticello 147, 38  
Merlino, Jack Joseph—Palisades, Colo. 131,  
46  
Million, Dorris March—Richmond 152, 148,  
45  
Mims, Carl Prichard—Boldman  
Moore, Ada M.—Widewater 35  
Moore, Carl Edward—Frankfort 144, 137, 34  
Moore, John Wright—Falmouth 151, 141,  
136, 49  
Moore, Nellie Spencer—Beattyville 43  
Morgan, Dale L.—Newport 150, 38  
Mullikin, J. W., Jr.—Ewing

## N

Nunnelley, Lucile Wing—Hustonville 140,  
138, 137, 37

## O

Osborne, Emma Belle—Winchester

## P

Park, Josephine Collins—Richmond  
Peed, Laura Virginia—Mt. Sterling 154, 49  
Perry, Georgia Myrtle—Alton Station 152,  
147, 40  
Petty, Sallie Routt—Ashland 154, 38  
Pittman, Robert Ewell—Dreyfus  
Pointer, B. Lella—Smith-Ballard  
Pointer, Della Bernice—Richmond



Poynter, Louis Lee—Crab Orchard 40  
Prewitt, Aubrey Wm.—Corbin 152, 141, 37  
Proffitt, Juanita E.—Corbin  
Purdy, Mary Gene—Covington 148, 146,  
135, 42

## R

Ramsey, Homer Wendell—Whitley City  
152, 140, 47  
Reynolds, Don Roy—Tyner  
Rice, Bertie Bales—Livingston  
Richardson, Mildren Francis—Science Hill 47  
Richmond, Mary Ellen—Ludlow 153, 152,  
140, 135, 40  
Rigby, Sarah Baker—Richmond 146, 40  
Roberts, Elvy Benton—Barbourville 144, 45  
Robinson, Jane Hudson—Richmond 146, 35  
Robinson, John Earle—Walton 144, 141, 32  
Rodgers, James Sory—Covington 153, 150,  
144, 141, 39  
Root, Ida Virginia—Corbin 146, 42  
Roth, Leslie George—Covington 39  
Rozen, Helen Therese—Maysville 55, 139  
Ruber, Raymond H.—Falmouth 152, 151,  
137, 136, 41  
Ruby, Robert C.—Covington 139, 136, 46

## S

Schorle, Helen Dorothy—Newport 153, 147,  
137, 134, 40  
Selvey, Madge Wilma—London  
Shearer, Allen Joseph—Campbellsburg 152,  
150, 136, 33  
Shearer, Lula—Monticello 144  
Sizemore, Ralph E.—DeMossville  
Smith, Ray Clarence—Somerset  
Snyder, Ernest B.—Corbin 38  
Sovine, Mildred Louise—Ashland 146, 47  
Stafford, Charles Leonard—Covington 152,  
151, 140, 131, 134, 46  
Stephenson, Pearl Mae—Richmond 155, 151,  
136, 135, 46  
Stigall, Mary Kathleen—Ravenna 152, 138,  
45  
Stone, Joy Bailey—Richmond  
Swartz, Hazel Caldwell—Ewing 152, 151, 48

## T

Teater, Lucy May—Nicholasville 153, 152,  
151, 140, 47  
Terrill, William Osa—Compton 48  
Terry, Charles Lister—Frankfort  
Terry, Ellen Sally—DeWitt  
Thompson, Elizabeth I.—Elgin  
Tipton, Holline—Ravenna  
Turner, Lona Lee—Covington 137

## U

Unthank, Cecil Herman—Loyall

## V

Vallandigham, Rebekah McNeal—Owenton  
142, 140, 43  
Van Winkle, Raymond Arthur—Paint Lick  
135, 39  
Voshell, Leslie Wilson—Burlington

## W

Wagers, Charles Searcy—Richmond  
Wagers, Louise Dudley—Rice Station  
Wallace, Delmar—Somerset  
Wallace, Lucy Elizabeth—Irvine 154, 142, 46  
Wash, Ada Katherine—Lexington 155  
Wash, James Christopher, Jr.—Eminence  
136, 42  
Wellman, Fayette—Irad 45  
Wickersham, Arthur Logan—Irvine 151,  
142, 47  
Williams, Grace Yaden—London 137, 40  
Wilson, Hazel—Richmond  
Wilson, Stanley—Richmond 152, 144, 38  
Witt, John David—West Irvine 33  
Witt, Moss Gibson—Winston  
Woody, Eunice Pearl—Pittsburg 147, 42

## Y

Yates, Victoria Isabella—Waddy 152, 46  
York, Caleb Powers—Windsor  
Young, Jean Cannon—Dayton 146, 38

## JUNIORS

## A

Abrams, Burnace Edna—Clover Bottom  
Adams, Shefton Shelby—Pine Ridge  
Adams, William E.—Richmond 54, 131, 135  
Adcock, Ethlyn Eloise—Pikeville  
Adkins, Carl Oswald—Williamsburg  
Allen, Joe Kendal—Printer  
Alley, James R.—Borderland, W. Va.  
Amburgey, Kirby—Hindman  
Anderson, T. J.—Shawhan 151, 136  
Arnett, Gertrude C.—Salysersville  
Asbury, Fay Eva—Kenvin 154, 143

## B

Baker, Charlotte R.—Sand Gap  
Bales, Mayme Frances—Richmond  
Ball, Garnet Mae—McVeigh  
Bannister, Tilton—Paris 58  
Barbe, Cherry Earline—Richmond  
Baxter, Sidney Reed—Alton Station  
Bays, Herbert—Sandy Hook  
Bell, Mary Elizabeth—Boyd 148, 147  
Bevins, Cephas Edward—Mossy Bottom  
Blair, Franklin Robert—Elliston  
Blair, Ruby—McKee  
Borders, Ina Lucille—Richmond 149, 136

Bowen, Loraine Jean—Inez 59  
Bowling, Anna Ethel—Bert  
Bowling, Helen Aldrich—Berea  
Brewer, Bertha Hacker—Oneida  
Broaddus, Maryanna Kidwell—Irvine  
Brock, Ruth Margarete—Harlan  
Brockman, Fred—Sand Gap  
Broughton, Ruby Jeanette—London  
Brown, Nelle—Pigeon Roost  
Brown, Richard Lee—Cynthiana 150  
Bryant, John Elbert—Marshes Siding  
Burgess, Virginia Doris—Beattyville  
Bury, Lucille Marnita—Covington 57, 147,  
140  
Bush, Neva Gayle—Pleasureville 58, 154

## C

Cable, Mildred Thomas—Fincastle 141  
Campbell, Charles Dee—Maysville 58  
Campbell, Lloyd Brown—Middlesboro  
Campbell, Marian Francis—Springfield 142,  
136, 131  
Carmack, Wendell D.—Endee  
Caywood, Mary Helen—Covington 58, 148,  
143  
Center, John Bernard—Hazel Green  
Chamberlin, Eldora—Williamstown 59, 154  
Chasteen, W. H.—Mt. Vernon  
Chaney, Wilma Wilson—Ashland 54, 147  
Clarke, Mary Frances—Lexington 56, 148,  
147  
Clemons, Imogene—Noctur  
Cole, Roy Lee—Lower Buffalo  
Coley, Mildred M.—Louisville 139  
Combs, Bonita S.—Viccio  
Comley, Bill Henry—Irvine 57  
Conrad, Evelyn Nelson—Burlington 155,  
148, 142  
Cooper, F. Donovan—Portsmouth, Ohio 56,  
142  
Cooper, Jean Rogan—Monticello  
Cooper, Walter Scott—Mt. Vernon  
Cornett, Bessie—Laruc  
Cornett, Chalmer Buster—Viper  
Costanzo, Frances Rose—Middlesboro 56  
Cox, Atlanta Mae—Shelbyville 153, 140,  
138, 135  
Crabtree, Flora Wilson—Revelo  
Crawford, Steve, Jr.—Athol  
Crech, Ida Lucille—Richmond  
Crites, Shirley Virginia—Newport 58, 148,  
147  
Cromer, John Henry—London  
Culton, Elizabeth Browning—Richmond 55,  
135

## D

Dailey, M. Alene—Mt. Vernon  
Davidson, George W., Jr.—Annville  
Dawn, Mary Elizabeth—Covington 58

Denny, Edith Margaret—Richmond 54, 153,  
135  
Denney, Mary Lewis—Burnside  
Dickman, Robert Willis—Covington 57, 144,  
141, 137  
Dorris, Dorothy Helen—Richmond 55, 135  
Dotson, Inis—Phelps 54  
Doty, Dabney Brown—Richmond  
Douglas, Clifford—Saxton  
Douglas, Leona Dishon—Saxton  
Downing, Edward Patrick—Corbin  
Dunaway, Durothy Margurie—Glencoe 137,  
135

## E

Eads, Mary Helen—Monticello 59, 139  
Eaton, Billy Green—Mockville, N. C.  
Emerson, Mary Edith—Eubank  
Estes, Mildred Mae—Science Hill  
Eubank, Martha Avert—Flemingsburg  
Evans, Florence Irene—London  
Evans, George Waller—Richmond

## F

Fielder, George Wilham—Berea  
Fields, Eula Marguerite—London 57, 147  
Fields, Ishmael—Busy  
Fields, Nina Lou—Pinsonfork  
Flannery, Gladys Gray—Alphoretta  
Flowers, Elizabeth Gilmer—Columbia 57,  
148, 143  
Floyd, Ethel Virдена—Somerset

## G

Garrett, Viola—Station Camp  
George, John—London  
Gerrard, Zelma Peters—Waynesville, Ohio  
Gilreath, Garnett Emerson—Whitley City  
Gould, Winnie—West Irvine  
Gray, Clarke Thomas—Newport  
Gribbin, Owen Tibbals—Somerset

## H

Hacker, Jerry Lee—Bond  
Hacker, Thersa—Oneida  
Hall, Majie—Hall 54  
Hall, Russell—Pippapas  
Hamilton, James Douglas—Richmond  
Hamilton, Ray George—Millers Creek  
Handy, Lou McCowan—Richmond  
Harrison, Ravenell—Vanceburg  
Hatton, Bennie F.—Neon  
Hays, Anna Lee—Chilton  
Hennessey, James Thomas—Dayton  
Henry, Maude—Irvine  
Hensley, Henry—Laurel Creek  
Henson, Ruth Ellen—Anchorage  
Herndon, William Offord—Corbin  
Hiatt, Jones Bennett—Mt. Vernon

Hill, Ella Katherine—Berea  
Hill, Hazel Irene—Cliff  
Hobson, Louise—Pikeville  
Holbrook, Minerva—West Prestonsburg  
Hollon, Clennie—Williba  
Hopkins, Daniel B.—Topmost  
Howard, Claude Wm.—Harlan  
Hughes, Elmo K.—Richmond  
Hughes, Stella Anna—Crystal  
Hurley, Eulene M.—Annville  
Hurley, Godfrey—Annville  
Hurley, Vady Beryl—Conway

I

Isaacs, Deward Belmont—Station Camp  
Isaacs, Marie—Beattyville

J

Jasper, Pauline E.—Somerset 57  
Jayne, Carrie Faye—Flat Gap  
Jenkins, Anna Mildred—Million  
Jones, Hubert Clinton—Bedford  
Jones, Jewel—Tyner  
Jones, Margaret Pauline—Corbin  
Jones, Sylvia N.—Irvine 151  
Jones, Tressie Mae—Beattyville

K

Keen, Carl—Dryhill  
Keltner, Thelward—Corbin  
Kemp, Carl William—St. Matthews 55, 150,  
131  
Kenamer, Flora Elizabeth—Richmond 54  
Kenney, Mary L.—Independence 54  
Kerr, John Wilson Webster—Schenectady,  
N. Y.  
Klein, Arthur Francis—Portsmouth, Ohio

L

Lake, Hilah I.—Peoples  
Lawson, Aileen—Corbin  
Lawson, Hagar Lester—Loyall  
Lewis, Betty—Louisville  
Lewis, Charley—Royrader  
Lewis, Clyde Joseph—Newport 55, 137  
Lewis, Myrtle Sharp—Taylorsville  
Litsay, Elizabeth Duncan—Springfield  
Little, Frances—Southgate 55, 155, 142, 131,  
135  
Locknane, Harry Gordon—Latonia  
Long, Samuel Spurgeon—West Irvine  
Long, Sarah Louise—Richmond 151, 140  
Lowe, John B.—Inez

Mc

McCarthy, Albert Lee—Eminence  
McHargue, J. Naomi—Irvine  
McIntosh, Charles W.—Xrypton  
McPetrige, Charles Robert—London

McWhorter, Virgil Henry—Oakley

M

Magee, John S.—Crab Orchard  
Marcum, Cleth Mae—Big Creek  
Marshall, Evelyn Margaret—Covington 148,  
147, 143  
Martin, Julia—Hall 58  
Marz, Vera Elizabeth—Newport 57, 136  
Marz, Virginia Mason—Dayton 56, 152, 136  
Mason, Fred—Booneville  
Masters, Mildred—Million  
Meadors, Grace Viola—Williamsburg  
Metcalf, William—Tyner  
Miller, Allene—Monticello  
Mills, Harold Hobert—Pineville  
Moles, Francis—Auxier  
Moore, William C.—Endee  
Moores, Frankie Marie—Richmond  
Morgan, Charles Englor—Shelby Gap  
Morgan, Lois Precia—Berea  
Morgan, Marion Nichols—Shively  
Music, William Donald—Auxier 58, 151

N

Napier, Mary—Green Hall  
Neal, Charles Raymond—Irvine 56, 136  
Neely, Mildred Louise—Somerset  
Neikirk, Glen Lloyd—Somerset  
Newkirk, Pauline—Millers Creek  
Noble, Alma Jean—Lawson  
Noland, Harvey—Union City  
Noland, Sophia Marie—Nicholasville 59  
Noland, Virginia—South Irvine  
Nunnery, Eula Mae—Prestonsburg 55, 131

O

Osborn, Ann Frances—Martin 58, 135

P

Parsley, Darrell Parker—Oakley  
Payne, Dorothy Mae—Corbin  
Pendergrass, Agnes—Major 152  
Pendergrass, Mary Elizabeth—Pryse  
Perkins, Marion D.—Louisville 54, 146  
Perraut, Virginia K.—Minerva 138, 136  
Phillips, Evelyn Jean—Corbin  
Pike, Alma Leona—Livingston  
Ponder, Seldon—Jep Hill  
Pope, Ethel—Bond  
Porter, James Harold—Beattyville  
Powers, George Robert—Verona 59, 150,  
144, 136  
Pratt, Anne Shelton—Leburn  
Pratt, Orben—Leburn  
Pryse, Eugene (James)—Beattyville

## R

Rains, Lulu Belle—Woodbine  
 Reed, Joe Schneider—Crittenden  
 Reed, Nantie Bell—Harrodsburg 59  
 Reeves, Ruby Shelton—Christopher  
 Reid, Kenneth Flanders—Paris  
 Reynolds, Ferne—Somerset  
 Rice, Adele—Livingston  
 Rice, John M.—Vanceburg  
 Rich, Edna Mae—Stanford  
 Richardson, Arnold O'Rear—Witt Springs 56  
 Riggins, John Paul—Columbia  
 Risner, Georgie A.—Salyersville  
 Robbins, Thelma Jo—Brodhead  
 Robinson, Viola Belle—Three Links  
 Rogers, R. Edythe—Loyal 56  
 Rose, Caesar—Beattyville  
 Rouse, Clyde Leonard—Covington 55, 151,  
 137, 131

## S

Salisbury, Durward E.—Hunter 54  
 Salyer, Ethel—Salyersville  
 Sampson, Georgia Irene—Harlan  
 Sams, Ethel—West Irvine  
 Sams, Rachel—West Irvine  
 Sams, Roscoe—Spurlock  
 Sams, S. Emma—West Irvine  
 Sams, Victor—Bimble  
 Saylor, Dot—Berea  
 Saylor, Howard—Brodhead  
 Sebastian, Curt—Crockettsville  
 Shannon, Sheila O'Neal—New Castle  
 Siler, Nona Mae—Rockhold  
 Siler, Ova J.—Williamsburg  
 Singleton, Ewell—Ritchie  
 Sizemore, James Louis—Hazard  
 Sloan, Denver—Mouth Card  
 Smith, Agnes Victoria—Ravenna 58, 152, 136  
 Smith, Clive—Williamsburg  
 Smith, Dorothy—McKee  
 Smith, Edward—Pikeville  
 Sparks, Colin—Egdon  
 Sparks, Nina—McKee  
 Spears, Alvin—Mossy Bottom  
 Spears, Charles Edison—Boldman  
 Spencer, Emma Lee—Harveyton  
 Spivey, Edna Earle—Irvine  
 Stacy, Iva Pearl—Richmond  
 Stanfield, James—Covington 56, 152, 144,  
 137  
 Stapleton, Ella—Praise  
 Stayton, James Edgar—Dayton, Ohio 58,  
 144, 141, 134  
 Steele, William Crosby—Richmond  
 Stephens, Frankie Susan—Cliff  
 Stephens, Hobson—Whitley City  
 Stidham, Roberta Fay—Lothair

Stiglitz, Ann Louise—Louisville 55, 151,  
 148, 146, 131, 135  
 Stinnette, Nina Lee—Asheville, N. C. 57, 154  
 Stinson, Robert Gray—London 54, 142, 140,  
 135  
 Stith, Virginia Carroll—Ekron 148  
 Sturm, Betty Jane—Bellevue 56, 153, 136,  
 135  
 Summers, Ivce—Lamero  
 Suter, John Owen—Campbellsburg 57, 136  
 Sutton, William Edward—Langley  
 Swafford, Oscar—Barbourville

## T

Taylor, Robert Bruce—Whitesburg  
 Taylor, Virgil William—Ft. Thomas  
 Terrill, Fred E.—Campton  
 Thomas, Helen Irene—Paintsville 153, 148,  
 147  
 Tipton, Hazel Estine—Ravenna  
 Toadvine, Anna Sue—Cynthiana 57, 143,  
 134  
 Todd, Anna Frances—Bybee  
 Todd, Kathleen—Paint Lick  
 Tudor, Verda Mae—Richmond  
 Turpen, Willie B.—Somerset

## V

Vance, Marjorie Christine—Drift  
 Vaught, Evelyn—Somerset  
 Venable, Gladys Tussey—Muncy  
 Vermillion, Kate Wilma—Jellico, Tenn.

## W

Waggener, Nelle Bernice—Columbia  
 Ward, Ruth—Slemp  
 Watson, Vernon Fay—Owenton 136  
 Watts, Von B.—Leatherwood  
 Weaver, Jack Lee—Dayton  
 Whitaker, Coleman—Cumberland  
 White, Dorothy Mae—Ashland 56, 137  
 White, Mabel Audrey—Middlesboro 56  
 Whitehead, Guy—Richmond 150  
 Wickland, Harold Alphonse—Gardner, Mass.  
 54, 150, 141, 136  
 Wilcox, Frank Hurst, Jr.—Newport 55, 134  
 Williams, Eloise—Pikeville  
 Wilson, Fannie M.—Corbin  
 Winchester, Bernice Marie—Irvine  
 Winchester, W. R. (Mrs.)—Irvine  
 Winkler, Faye—Waco  
 Witt, Margaret Louise—West Irvine 54, 137  
 Witt, Ray—West Irvine  
 Womack, Eloise Mary—Oldtown 54  
 Wood, Minnie Lee—Maysville 57  
 Woolum, Gladys Frances—Yancey

## Y

Yeager, Carl Edward—Newport  
 Yelton, Edwin Alan—Ft. Thomas

## Z

Zakem, Evelyn—Newport

## SOPHOMORES

## A

Abney, James Robert—Berea  
 Allen, Berderick LaMarr—Northern  
 Allen, Pearl—Printer  
 Allen, Wilma Gene—Corbin 63  
 Ammerman, Ruth McNair—Cynthiana 64  
 Anderson, Marie Anna—Richmond  
 Anderson, William Lyndon—McKee  
 Arbuckle, Betsy Mason—Richmond 64, 154

## B

Back, Cleta Landrum—Stevenson  
 Baker, Frances June—Brodehead 65  
 Baker, Irvine—Dunraven  
 Bail, Floyd Clark—Pine Knott  
 Bassham, Frances M.—Kildan  
 Bastin, Odes—Bethelridge  
 Baxter, Dorothy Jane—Richmond  
 Baxter, Edith June—Richmond  
 Begley, Pauline Lucille—Harveyton  
 Bennett, Magdalene—Jenson 143, 138  
 Berlin, Martha Virginia—Latoria 65  
 Berridge, James Douglas—Irvine  
 Best, Eleanor Henry—Harrodsburg 66  
 Black, Mary Eleanor—Richmond 64  
 Black, Mary K.—Erlanger 62  
 Bowles, Gladys Mae—Finchville 154  
 Bradley, Daucie Louise—Evarts  
 Brammell, Wallace Scott—Frankfort 62, 144  
 Brewer, Geneva Elizabeth—Pine Ridge  
 Bright, Billy M.—Richmond  
 Brock, Dotti Allen—Richmond 63  
 Brock, James Christopher—Harlan 64  
 Broyles, Edith Elizabeth—Plato  
 Bullock, Leonard—Mt. Vernon  
 Burnam, Robert Rodes III.—Richmond  
 Burns, Margaret—Berea  
 Burrus, Alexander Doniphan—Richmond 62,  
 151, 138, 131

## C

Caines, Jean Elizabeth—Ashland 65, 138  
 Callis, Margaret Allen—Frankfort  
 Cameron, Alberta—Paris 65  
 Capeless, Nat G.—Bond  
 Casteel, Marie M.—Richmond  
 Caster, Betsy Ann—Willoughby, Ohio 66  
 Castleberry, Margaret Elizabeth—Lexington  
 Catlett, Mary Ruth—Lawrenceburg 62, 143,  
 142, 140, 138  
 Cawood, Pauline Mayree—Evarts 64  
 Caywood, Elmer S., Jr.—Ravenna 64  
 Center, Eleanor Katherine—Hazel Green 62

Chappell, John C.—Middlesboro  
 Chenault, Joe Prewitt—Richmond  
 Chesnut, Willia—Livingston  
 Childers, Jack—Pikeville  
 Clark, Jewell Susan—Inez  
 Clark, Kathleen—Corbin 63  
 Claxon, Florence Eleanor—Forks of Elkhorn  
 143  
 Colbert, Phoebe Rosalie—Falmouth 66, 148,  
 143, 135  
 Collins, John Dishman—Seco  
 Combest, Henry Harmon—Junction City  
 Combs, Clarence—Congleton  
 Combs, Owen Travis—Harlan 66  
 Combs, Thomas Darwin—Beattyville  
 Congleton, Paul Burnam—Richmond  
 Cooper, Virginia Lee—Vanceburg  
 Cornett, Lela Frances—Booneville 64, 155  
 Cox, Nita Frances—Evarts 63  
 Craig, Madge Helena—Rockholds  
 Crawford, Violet Maxine—Combs  
 Creager, Nita Lorraine—Ft. Thomas 135  
 Creech, Florence Benge—Fogertown  
 Cross, William M.—Oneida, Tenn.

## D

Davis, Hubert Woodrow—Rush  
 Dempsey, Helen Loften—Warfield  
 Dodson, Robert Lee—Maysville  
 Dorsey, Bernard Riblin—Flemingsburg  
 Drury, Robert Datis—Willisburg  
 Dunn, Harold Ross—Cynthiana  
 Dunn, Joe—Richmond

## E

Eades, Charles G.—Richmond  
 Eggenspiler, Dorothy Eloise—Louisville 63,  
 154, 135  
 Estes, Oscar Garner—Richmond 63, 131, 135  
 Estridge, Margaret Milton—Crab Orchard  
 Estridge, Marjorie Woods—Richmond

## F

Farris, Hansford White—Richmond  
 Farris, Iva Loraine—Middlesboro 155  
 Fields, Mary Lee—Falmouth  
 Fife, John Chadwick—Richmond  
 Finneran, Mary Agnes—Covington 63, 151,  
 135  
 Flanary, Mildred Ruth—Nonesville, Va.  
 Fletcher, Helen Louise—Nicholasville 64  
 Floyd, Eileen—Richmond  
 Forester, Edna Jane—Harlan 64  
 Fours, Bettina—Lynch  
 Fox, Nancilynn—Lancaster, Stanford 65  
 Freeman, Karr Clark—Livingston

## G

Gabbard, Edward—Ravenna 62, 153, 150,  
 136

Gabriel, Olive Rankin—Martins Ferry, Ohio

63

Gadberry, Mary Martha—Lancaster 135  
Garland, Lythella Louise—Somerset 62, 138  
Garland, Viola Virginia—Somerset 66  
Garrett, Marvin Stuart—Richmond  
Garrett, Morris—Richmond  
Gilly, Georgia Rebecca—Harlan 65  
Gonzalez, Rina—Manati, Puerto Rico 65  
Gordon, William Nelson—Irvine  
Gott, James Edward—Berea  
Graham, Anna Meade—Maysville  
Gray, Drue—Cynthiana 155  
Griggs, Rozellen—Union City  
Guy, Woodrow Quentin—Mt. Sterling

## H

Haddix, Selena—Richmond  
Hall, Florence Marie—Lebanon 148  
Hall, Harold Moore—Brooksville  
Hamilton, Russell S.—Richmond  
Harrell, Edward Martin—Carrollton  
Harris, Claude H.—Louisville 65  
Harrison, Edna Mae—Irvine 65  
Harrison, Helen Elizabeth—Maysville 66  
Hatton, Anna Thomas—Morrill  
Hawkins, Alma Sue—Stamping Ground  
Hendren, Joe Drexel—Richmond  
Hendren, Willanna—Kirksville  
Hensley, Jean Bennett—Berea  
Hensley, Olla Wilson—Richmond  
Hogg, Marie Anne—Mayking  
Holland, Hattie Mae—Greendale 66  
Holland, Sallie Adeline—Richmond 153  
Holman, Mary Luise—Pineville  
Hopper, Della Mae—Corbin  
House, Mary Ruth—Nicholasville 154  
Houselman, Albert Jay—Covington  
Howard, Pal Green—Pineville  
Hughes, John Thomas—Alva 135  
Hughes, S. Marie—Richmond 62  
Hume, Jimmie L.—Richmond  
Hunter, Herbert Robert—Ft. Thomas  
Hurst, Harold G.—Hurst

## I

Isaacs, Grace Newton—Station Camp  
Isaacs, Imogene V.—Mershons

## J

Jagers, Marian Frances—Frankfort 155,  
143, 135  
Johnson, Frances Joyce—Middlesboro  
Johnson, Mildred Allen—Richmond  
Jones, Beatrice—Richmond  
Jones, Doris Hope—Barbourville 65  
Jones, Ernestine Rita—Dreyfus

## K

Karanaugh, Maxine Lee—Berea  
Keating, James William—Corbin  
Keeton, Ruby—Daysboro 66, 155  
Kelsch, Marjorie Marie—Dover  
Kennelly, Alice Elizabeth—Covington  
Kenney, Dudley—Glencoe 62  
Kincer, Reaua Jane—Mayking  
King, Ann Catherine—Mt. Sterling  
Klein, Helen Catherine—Portsmouth, Ohio  
Kornhoff, Raymond Edward—Covington

## L

Lea, Mary Louise—Covington  
Lehman, Mary Frances—Louisville 144  
Lewallen, Lillian Elaine—Harlan 62  
Lewis, George Myron—Vanceburg 63  
Liddell, Lamah Oldham—Butler  
Lisle, Elnor Merritt—Irvine  
Livingston, Carl Blair—Logall

## M

McClanahan, George Lee—Ashland  
McCoy, Hugolene Meade—Raceland  
McIlvane, Mary Lide—Flemingsburg 64, 143  
McIlvane, Pauline Howe—Richmond  
McKinney, Bonnie Eudoll—Bybee  
McKinney, Loraine C.—Brooksville 65

## M

Maggard, Grace—Richmond  
Marchand, Juan Ramon—Manati, Puerto Rico  
65  
Marcum, Charles Ray—Richmond  
Massey, Doris Eileen—Covington 64, 135  
Mayer, Walter Bernard—Cold Springs 65,  
141, 134  
Mills, Jane Bourne—Owenton 136  
Moreland, Rubye—Ravenna  
Moreland, Shirley Glorina—Ravenna  
Morgan, Joe Everitt—Lancaster  
Mowat, Robert E.—Benham  
Muncy, Christine—Richmond  
Murray, Ruth—Sitka  
Murrell, Ralph Edward—Irvine

## N

Newberry, Virginia Maude—Inez  
Nolan, Polly—Harlan  
Noland, Sara Prudence—Richmond

## O

O'Rear, Virginia—Frankfort  
Ordich, George—  
Osborne, Adrian Monroe—Wallins Creek  
Owens, Laverne—Mt. Vernon

## P

Parks, Anna Lee—Berea 63  
 Partin, Mayme Leone—Campbellsburg  
 Pearson, James Edwin—Richmond  
 Pence, Josephine—Bryantsville  
 Perkins, Margaret—Beattyville  
 Perry, Charles Roland—Dayton  
 Phillips, W. Thomas—Oneida, Tenn.  
 Prater, James Hayes—Lackey  
 Pratt, Dorothy Mae—Ashland  
 Pulliam, Dorothy Lee—Waddy  
 Pulliam, Edith Mae—Waddy

## R

Radcliffe, Robert, Jr.—Pikeville  
 Rader, Gordon C.—Louisville  
 Reffett, Edwin—Northern  
 Reynolds, Clark—Lake  
 Reynolds, Mildred Rae—Brodhead  
 Reynolds, Stanley—Lake  
 Rich, Mildred Ruth—Covington 64  
 Rich, Stephen Warren—Dry Ridge  
 Richard, Joan—Ripley, Ohio  
 Richards, Willa Sue—Ashland  
 Richardson, Alma Caroline—Science Hill  
 Riggs, Roberta—Russell 64, 138  
 Rivard, Marguerite Winston—Independence  
 63, 153, 152  
 Robinson, Ben—Richmond  
 Robinson, Paul Alvin—Walton 63  
 Rodgers, Mary Ann—New Market, Ala. 66,  
 148  
 Rose, John O., Jr.—Corbin 62  
 Ross, Anna E.—Majestic  
 Runyon, John Bogar—Belfry  
 Runyon, Laura Thacker—Belfry  
 Ryle, Raye Elmore—Burlington

## S

Sandidge, Willard Marvin—Clarence 66, 141  
 Saylor, Jesse—Malus  
 Scott, Joe—Pikeville  
 Scott, Virgie Lee—Wallins Creek 65  
 Sears, Marjorie Elaine—Somerset 142  
 Seerers, George Webster—Richmond  
 Shadoan, Lucy—Burgin 62  
 Shepherd, Lyda Belle—Ashland 63  
 Shetler, Vernon—Navarre, Ohio  
 Sic, Evelyn Louise—Cleveland, Ohio 65  
 Smith, James Andrew—Berea  
 Smith, Marion Park—Lawrenceburg 62, 155,  
 131  
 Smither, Dorothy Gene—Frankfort  
 Snoddy, Winifred Louise—Raceland  
 Snowden, Raymond Cecil—Richmond  
 Squires, James Richard—Whitesburg 64, 153,  
 142, 138, 135  
 Syrgley, Hubbard Fletcher—Nashville, Tenn.  
 Stamper, Lillian Earl—Eminence

Steger, Donald Jefferson—Covington 66,  
 150, 141, 136  
 Strunk, Winston Durward—Pineville  
 Sweeney, Jean Mary—Covington 155

## T

Taylor, Leetta—Owenton  
 Tevis, Hallie Olivia—Richmond  
 Thomas, Fred—Ravenna  
 Thurman, Wyatt James—Benham  
 Tiller, Ruby Pansy—Eminence  
 Treadway, June Harmon—Perryville 64  
 Tussey, Ora Franklin—Portsmouth, Ohio 64,  
 131

## U

Ueltschi, Martha Helen—Frankfort 62

## W

Wagoner, Mary Louise—Paris 63  
 Walker, Ruth Frances—Richmond  
 Ward, Minta (Sammy)—Slemp  
 Warnock, John Clark—Fullerton  
 Watson, George Nolin—Ashland  
 Webb, Ethel—Swallowfield  
 Wetzel, Richard Earl—Dayton 66  
 Wiggins, Jane Coy—Richmond  
 Wilson, Catharine White—Irvine  
 Wilson, Deloros—Crab Orchard  
 Wilson, Deucilla Barnett—Irvine  
 Wilson, Harry B., Jr.—Irvine  
 Wilson, Lorene—Richmond  
 Wilson, William Harry—Gallipolis, Ohio  
 Witt, Virginia Dare—Wisemantown  
 Wood, Kathleen—Williamstown

## Y

Yadon, Lorene Fae—Brodhead

## Z

Zaring, Allen—Richmond 65

**FRESHMEN**

## A

Adams, Thomas C.—Richmond  
 Agee, Nina Lucille—Owenton 71  
 Akers, George W.—Amba  
 Allen, Dick Mayo—Prestonsburg  
 Allen, Newell Hanson—Richmond  
 Angel, Lois—Clay City  
 Anthony, David Henry—Frankfort  
 Appleby, Madie Edith—Burkesville  
 Arnett, Richmond—Salyersville  
 Austin, Jim—Richmond

## B

Baggs, Robert Adolph—Portsmouth, Ohio  
 Bacon, James Byron—Frankfort  
 Barbe, Eula B.—Richmond  
 Bates, Gertrude Helen—Cleveland, Ohio 75  
 Bays, Majel (Mrs.)—Sandy Hook

Bell, Joe—Shelbyville  
Berryman, Lela Pauline—Winchester 71  
Best, Virginia—Mount Eden 75  
B'Hymer, Edna Louise—Covington  
Biesack, Susan Rae—Covington 73, 131  
Billingsley, Mary Elisa—Middlesboro 73,  
141, 135  
Bishop, James Pearl—Teges  
Black, Hazel B.—Harrodsburg 70  
Blair, Glen—Cumberland  
Boggs, Robert—Annville  
Booher, Edgar Franklin—Des Moines, Iowa  
Booth, Jesse Colliiver—Paris  
Bowles, Rilla Florence—Richmond 74  
Bowling, Wilford Martin—Buckhorn  
Boyd, Royce Leland—Trinity  
Brakefield, Theda Howard—Irvine  
Brandes, Paul Dickerson—Fort Thomas  
Brasher, Sadie Elizabeth—Dycusburg 74  
Broadus, Edna Earle—Richmond  
Brock, Carolyn Frances—Frankfort 71  
Brooks, Sara Esther—Corbin 74  
Brown, Mary—Pigeon Roost  
Brown, Richard Walden—Frankfort  
Brown, Robert Ross—Berea  
Brown, William Allsop—Fullerton  
Broyles, Elna Marcena—Emlyn  
Burgin, Garnette Gleyn—Lawrenceburg 73  
Butler, Barbara Ann—Oswego, Kansas 75

## C

Caldwell, Norma Lee—Gray Knob  
Cammack, Martha Frances—Owenton 72  
Campbell, Martha Anne—Covington  
Carlson, Virginia Mary—Jamestown, N. Y. 73  
Carroll, Dorothy Ann—Harrodsburg 76  
Cassady, Mary B.—Inez  
Cecil, Nora Frances—Hazel Green 72  
Center, Grace Marie—Hazel Green  
Chandler, Dock Baird, Jr.—Brodhead 75  
Chaney, Dorris Mildred—Brooksville 70  
Chism, Novella Blanche—Bagdad  
Clark, Wilma Ellen—Berea, Ohio 73  
Clutes, Annette Natalie—Covington  
Coffey, Hartman Estlake—Berea  
Cole, Edith Shirley—Harlan 72  
Coleman, Jewel Maude—Paw Paw  
Colley, Margaret Rebecca—Nashville, Tenn.  
72, 138  
Collis, Jane Francis—Richmond  
Colson, Calfee Guy—Somerset  
Combs, Orlie Collis—Pebworth  
Conner, Lindsey Shelton—Mt. Sterling  
Cooke, Madelynn Jane—Fort Thomas 70,  
135  
Correll, Beulah Evelyn—Somerset  
Cox, Heloise Hudson—Lancaster 75  
Cox, Sadie Elizabeth—Lawrenceburg 75  
Crawford, Jean Marie—Stanford 76  
Cummins, Wilham Talmage—Covington

## D

Darling, Fred Edgar—Glouster, Ohio  
Darling, Ralph Odis—Glouster, Ohio  
Davis, Beulah Vivian—Ravenna 73  
Davis, Doris Long—Covington 72  
Davis, Earl Arley—Middlesboro 73  
Davis, Flossie Mae—Shade  
Davis, Glyn Wood—Irvine  
Davis, Homer James—Blue Diamond  
Davis, Maxcine Helen—Russell 74  
Delahunt, Kitty Anne—Russell 75  
DeMossey, Jean—Walton 74  
Dicken, Vivian Fae—California  
Dickerson, Zebrum Slusher—Prestonsburg 142  
Dillman, Esther Angie—Fort Thomas 71  
Duke, Melvin Nelson—Corbin  
Dunagan, Robert Tera—Somerset  
Dunavent, Theda Eunice—Harlan 72, 154,  
135  
Duvall, Braxton—Winchester, Va.

## E

Early, Dorothy Jean—Richmond  
Elmore, William Floyd—Irvine  
Esham, Juanita Marie—Vanceburg 76  
Eubanks, Thelma Bernice—Covington  
Evans, Nell Louise—Lothae 70

## F

Faries, Jack Smith—Maysville  
Farley, Beatrice Watson—Richmond  
Farmer, Charles—Arvel  
Farris, Lee LeForce—Middlesboro 71, 138  
Fidler, Estelle May—Bloomfield  
Fike, Margaret Clara—Shade  
Fitzpatrick, Henry D., Jr.—Prestonsburg  
Flanagan, Frank Joseph—Richmond  
Floyd, Charles Nelson—Richmond  
Floyd, Roy Franklin—Richmond  
Flynn, Sue Helen—South Irvine  
Ford, Beulah Katherine—Richmond  
Fortner, George Eugene—Ravenna 74  
Fortner, Ruth Virginia—Ravenna 74  
Fothergill, Sara Kathryn—Carrollton 74  
Frame, Margaret Eileen—Harlan 71, 131

## G

Gann, Bonnie Jeanne—Hustonville 70  
Garrett, Virginia Mae—Station Camp  
Garrrott, Trudy Gill—Harrodsburg 72  
Godby, Fogle—Bethelridge  
Goodlett, Raymond Edgar—Burgin 71  
Gortney, Mildred Alice—Harrodsburg 73  
Gratzer, Mary Francis—Louisville  
Greer, Ruth Salmon—Bardstown 70, 155  
Greer, William Milton, Jr.—Woodlawn  
Griffith, Perry Buford—Carrollton 76  
Grutton, Callie Christina—Sinai 74



## H

Hale, William H.—Richmond  
 Haley, Helen Louise—Cynthiana  
 Hall, Cecil Millard—Triplett  
 Hall, Woodford Lee—Broodsville  
 Hamilton, Mary Ann—Frew  
 Hamm, Versie Alden—Waltz  
 Hanlon, Mary Nell—Carrollton  
 Hanser, Mary Harvey—Shelbyville  
 Harmon, Mary Alline—Somerset  
 Harris, Claude—Nashville, Tenn.  
 Harrison, Margie Sue—Vanceburg 75  
 Hatfield, Guy—Ravenna  
 Havens, Joe Richard—Mt. Olivet  
 Hawkins, Lee B.—West Irvine  
 Hay, Lawrence Cord—Maysville  
 Haynes, Charlotte Ruth—Chicago, Ill. 73  
 Heinzman, Tommy McFarland—Richmond  
 Henderson, Lena Cornish—Lexington  
 Hendricks, Joe Clay—Berea  
 Hereford, Pauline Frederick—Prestonsburg  
 Hiatt, Elizabeth Lucille—Wildee 70  
 Hickey, John King—Mt. Sterling  
 Hickman, William Daniel—Covington  
 Hill, Chester—Cliff 70, 141  
 Hobbs, Sally Raye—St. Helens 75  
 Holbrook, Ernest Paul—Access  
 Holder, Maude Hess—Vanceburg 72  
 Howard, Mary Lee—Wallins Creek 74  
 Hudson, Hettie Elizabeth—Benito  
 Hughes, Ruby Anne—Bellevue 75  
 Hutchison, Dorothy Elwood—Lawrenceburg 75  
 Hygema, Ruth Dora—Cincinnati, Ohio

## I

Isaacs, Eula Mae—Berea

## J

Jackson, Herbert Dan—Chattanooga, Tenn.  
 Jackson, Juanita—Cumberland  
 Jenkins, Margaret Ruth—Carrollton 70  
 Jennings, Harold Gibson—Richmond  
 Johnson, William Wheeler—Louisville  
 Jones, Jayne Vivian—Richmond  
 Jones, John Lee, Jr.—Richmond  
 Jones, Mildred Lois—Falmouth 70  
 Jones, Orpha Marie—Virgie  
 Jones, Venard—Buckner  
 Jordan, Jaqueline—Barbourville 71

## K

Kanatzar, Nina Maree—Million 73, 155  
 Kelley, Jane Wilmina—Conneaut, Ohio  
 Kelly, Lawrence—Evarts  
 Kennedy, Delbert Eugene—Guston 73, 150  
 Kimball, Shirley Jane—Conneaut, Ohio  
 Kingsbury, Ruth Naomi—Covington 75

## L

Laile, Dorothy Alberta—Florence  
 Langdon, Anna Marie—Annville  
 Leake, Felonise—Russell 70  
 Lee, Reba E.—Tyner  
 Lemon, Doriselwood—Berry 71, 155  
 Leslie, Margaret Ann—Richmond  
 Lewis, Evaleen—Whitesburg 71  
 Little, Dorothy Fay—Berea  
 Long, Anna Evelyn—Lancaster 74, 155  
 Long, Mavoureen—Million  
 Lucas, Arthur—Primrose  
 Lucas, Emogene—Ft. Mitchell  
 Lucas, Harry Beau—Beattyville  
 Lunsford, Robert Bruce—Wisemantown  
 Lykins, Alice Rose—Glasgow 74

## Mc

McCarthy, June Genevieve—Cold Spring 74  
 McCord, Anthony Albert—Ewing  
 McNeill, Dorothy Lee—Lexington  
 McSpadden, Claude Wheeler—Harlan 72

## M

Martin, Jewell Wanda—Louisville 73  
 Masters, James Glyndon—Wisemantown  
 Maybury, Vera June—Newport 75, 140, 135  
 Miller, Gilbert Garrard—Barbourville 75  
 Miller, Richard—Waco  
 Mills, Jean Bernice—Pineville  
 Minch, Alma Burns—Owenton 73, 155  
 Minesinger, David Ellsworth—Sebring, Ohio  
 Miracle, Niobe—Pineville  
 Money, Jean Allen—Fishersville 72  
 Mullins, Cuba—Whitesburg 71, 154, 143

## N

Napier, Elna Edith—Hazard  
 Nash, Visscher—Trinity  
 Neikirk, Ruby Gordon—Irvine  
 Neison, Ray W.—California 74  
 Nelson, William Edward—Ravenna  
 Nesbitt, Heiatt—Frankfort 74, 154  
 Newsome, Clara Marie—Biscuit  
 Nicholson, James Frederick—Irvine  
 Noland, Jerre Lancaster—Richmond

## O

O'Hearn, Joseph Thomas—Stanford  
 Oldfield, Reno Elwanda—Newport 72  
 Oney, Mary Rebecca—Carrollton  
 Osborne, Homer Lee—Walton  
 Osborn, Mildred Louise—Ravenna 72

## P

Palmer, John Lincoln—Tallea  
 Parsons, Louise F.—Louisville  
 Paynter, Prewitt—Brooksville  
 Perry, Kenneth Wilbur—Lawrenceburg

Peters, Alpha Mae—Marydell  
Petty, William Crittenden, Jr.—Ashland  
PHELPS, Helen Fay—Frenchburg 72  
Phillips, Lewis Lee—Covington  
Pitman, Kathryn Elizabeth—Richmond  
Pope, Robert Woodrow—Knoxville, Tenn.  
Porter, Jean H.—Covington  
Pratt, Melvina—Leburn

## R

Raisor, Mildred—Owenton 75  
Ramey, Halleck Arlyn—Gesling  
Ramsey, Lydia Myrtle—Murl  
Ransom, Orville Merrill—Covington  
Reese, Mary Evelyn—Landing, Ind. 71  
Reeves, Mary Boyd—Richmond  
Rice, Elizabeth Lee—Erlanger 72  
Riley, Harriet Thelma—Sparta  
Robbins, Opal Kent—Brodhead  
Roberts, Jean Ramona—Verona 72  
Rogers, Lula Mae—Irvine  
Root, Georgia Ellen—Corbin 73  
Russell, Charles—Cawood 70

## S

Samuels, Frances Mason—Richmond  
Satterlee, Phyllis Heletta—Melbourne 73  
Schuster, Charles Steve—Chicago, Ill.  
Schutte, Virginia Viola—Hazard  
Senz, Robert Redding, Jr.—Yancey  
Shadoan, Russell L.—Burgin  
Shearer, James Maurice—Campbellsburg  
Shearer, Mary Eva—Susie  
Sheffler, Alma—Jellico, Tenn.  
Sherwood, Helen Roach—Louisville 71  
Shewmaker, Gladys C.—Harrodsburg 71  
Shorte, Lillian Rae—Berea  
Simmons, Ann Etta—Richmond  
Singleton, John Edwin—Richmond  
Skidmore, Milus Ralph—Baxter  
Slater, Earl Fred—Chattaroy, W. Va.  
Smiley, Margaret—Richmond  
Smith, Bert Jackson—Millfield, Ohio  
Smith, Kathleen—Ravenna 70  
Smith, Pat—Louisville 73  
Smith, Wm. Andrew—Millfield, Ohio  
Snow, Kathleen Ray—Covington 72, 153  
Snyder, Pauline—Corbin 72  
Sorrell, Charles Burns—Glouster, Ohio  
Sparks, Dudley Noland—Irvine 75  
Spears, Lena Jane—Covington  
Spivey, Emmet—Muncy  
Spratt, John Henry, Jr.—Covington 73  
Spurlock, Roy Taylor—Irvine  
Stanton, Quincy Alice—West Irvine  
Stayton, Mary Leone—Dayton, Ohio 74,  
141, 135  
Stewart, Helen Frances—Grayson  
Stewart, Raymond Harold—Maysville

Stocker, James William—Richmond  
Stockton, Mary Thomas—Richmond 138  
Stone, Burt—Wagersville  
Stone, Hubbard Nelson—Grayson 70  
Strong, Margaret—Richmond  
Sturgill, Gwendolyn—Prestonsburg

## T

Taylor, Elizabeth Frances—Buckhorn  
Taylor, James Browning—Richmond  
Taylor, Jane Lyle—Harrodsburg 73, 135  
Taylor, Lillie Isabel—Florence  
Taylor, Mary Matt—Stanford 74  
Teater, Oakley McCord—Richmond  
Teegarden, Georgia Christine—Ewing  
Thomas, Ann Tarlton—Midway 75  
Thomas, Evelyn Janette—Richmond 73  
Thomas, Grace—Richmond  
Tinnell, Bennie Clifford—Covington  
Tipton, Ethel—Ravenna  
Tollner, John D.—Augusta 72, 141  
Traylor, June Moreland—Rice Station  
Trent, Imogene England—Russell 70  
Triplett, Janrose—Richmond  
Tudor, Jess, Jr.—Newby  
Turpin, Mildred Elizabeth—Ravenna 72  
Tychonievich, William James—East Liver-  
pool, Ohio  
Tyler, Herman Henry—Beattyville  
Tyler, Astor Raymond—Beattyville

## V

Vance, James Edwin—Drift  
Vaughn, Juanita—Paris

## W

Walker, James Moberly—Richmond  
Walker, Mabel Elizabeth—Richmond  
Walker, Mary Bates—Richmond  
Waller, Hazel Berneice—Elliston 71  
Walters, James Edward—Balkon 71  
Waters, Howard Alexander—Circleville, Ohio  
Waters, Nancye Isabelle—Shelbyville 75  
Watts, John Wesley—Frankfort  
Weber, Vivian Louise—Ft. Thomas 71, 135  
Weddle, Euclid Eldon—Faubush  
Welch, Beatrice—Owenton 74, 142  
Wells, Dorcella—Falmouth 70  
Wells, Inez Milton—Richmond  
West, Dorothy Hunter—Newby  
Wheatley, Kemper Stone—Sardis  
White, Anna Lee—Richmond 75  
Wilder, Margaret Rose—Baxter 70  
Williams, James Edwin—Charleston, W. Va.  
Willoughby, Billy Evans—Richmond  
Wilson, Ida Meador—Guston  
Wilson, Jess Dewey—Burning Springs  
Wilson, Mary Elizabeth—Irvine  
Wilson, Paul R.—Berea  
Winburn, Harold J.—Richmond  
Winkler, Maureen—Waco  
Wise, William Edward—Ravenna  
Wyatt, Fannie Billingsley—Middlesboro 71

*Autographs*

*Autographs*





