

5-1-1952

Milestone - 1952

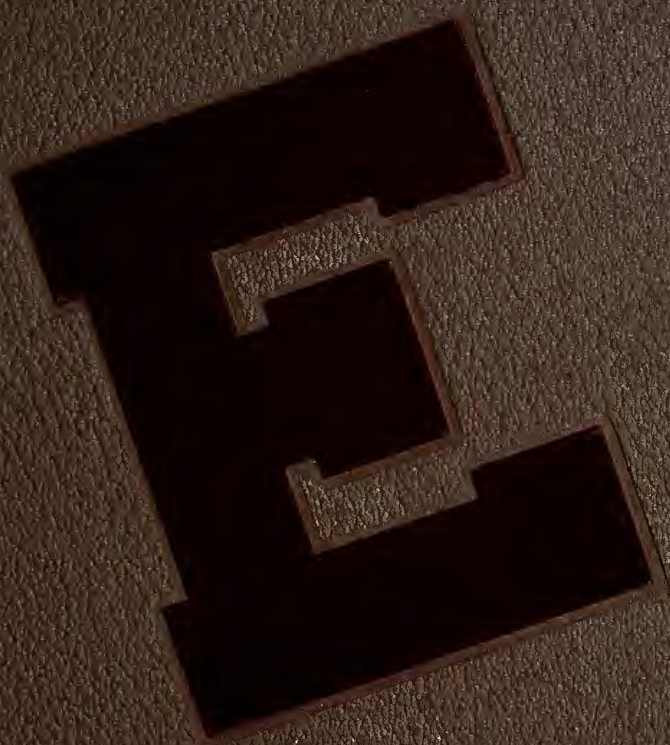
Eastern Kentucky State College

Follow this and additional works at: <http://encompass.eku.edu/yearbooks>


Recommended Citation

Eastern Kentucky State College, "Milestone - 1952" (1952). *Yearbooks*. Book 22.
<http://encompass.eku.edu/yearbooks/22>

This Article is brought to you for free and open access by the University Publications at Encompass. It has been accepted for inclusion in Yearbooks by an authorized administrator of Encompass. For more information, please contact Linda.Sizemore@eku.edu.







Digitized by the Internet Archive
in 2011 with funding from
LYRASIS Members and Sloan Foundation

<http://www.archive.org/details/milestone1952east>

Presenting

FOR

1952



EDITOR
GEORGE VARDEN
BUSINESS MANAGER
COLEMAN WITT



**EASTERN KENTUCKY
STATE COLLEGE
RICHMOND
KENTUCKY**

DEDICATION



The 1952 Milestone is dedicated to Dr. James Dorland Coates as an expression of our sincere appreciation for his untiring effort and genuine interest in making Eastern a better place in which to live and to learn.

FOREWORD

This is the marker of the end of one more mile in the life of students at Eastern.

It is hoped that this Milestone faithfully depicts the individuality of this year and presents it so that, in later years, the reader may more easily recall Eastern, its students, and their activities.

IN MEMORIAM

MAYE M. WALTZ

September 17, 1902 - November 15, 1951

Secretary to the Dean

RAMONA JEAN COMBS

October 7, 1929 - November 25, 1951

Member of the Junior Class

ANNA ROE KEITH

July 29, 1881 - April 2, 1952

Housemother, Men's Dormitories

*They shall not grow old, as we that are left grow old:
Age shall not weary them, nor the years condemn.
At the going down of the sun and in the morning
We will remember them.*



Features

52

Miss Eastern and her attendants are selected by the student body on a basis of beauty, poise, and personality.

Miss Eastern represents the college at the Mountain Laurel Festival, held annually at Pineville.

ATTENDANTS



NELL WILSON

SHIRLEY SPIRES



**MISS
EASTERN**

PATRICIA POWERS



**MR.
POPULARITY**

JIM BAECHTOLD





PAT RICKEY

**MISS
POPULARITY**

**HOMECOMING
QUEEN**



NELL WILSON

**BASKETBALL
QUEEN**



PAULINE COYLE



ANN GOVER

SNOW QUEEN

MILITARY BALL QUEEN

SHIRLEY SPIRES

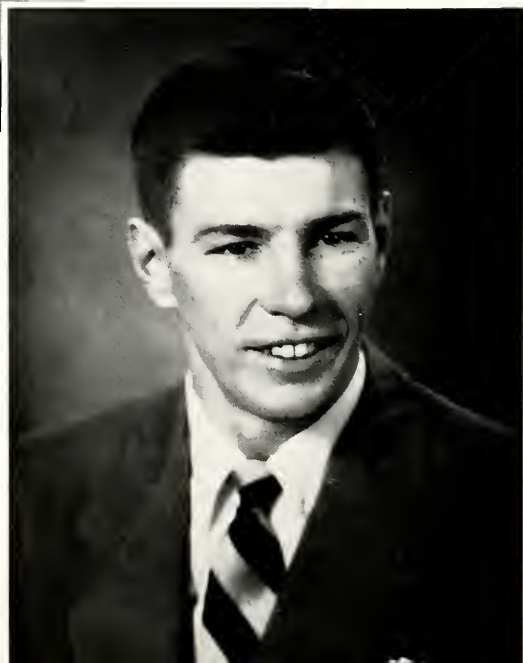


1951 JUNIOR PROM KING AND QUEEN



SHIRLEY SPIRES

JIM BAECHTOLD





Seniors





SENIOR CLASS OFFICERS

PAUL WILSON ----- President

JOHN DORMAN ----- Vice-President

BETTY JO WILLIAMS ----- Secretary

JEANETTE RUSSELL ----- Treasurer

DR. T. C. HERNDON AND DR. N. B. CUFF -- Sponsors





DONNA McKAMEY
Oak Ridge, Tenn.
B.S.
Elementary Ed.
Chorus 3



MONROE McGUIRE
Beattyville, Ky.
A.B.
History
Photo Club 3, 4

CHRISTINE THACKER
Phyllis, Ky.
B.S.
Elementary Ed.
Photo Club 4
Y.W.C.A. 4
Milestone Staff 4

JASPER W. ALLISON
Indianapolis, Ind.
B.S.
Math

HELEN CLAY DAVIS
Stanford, Ky.
B.S.
Elementary Ed.
Y.W.C.A. 1
Messiah 1, 4
Photo Club 4
Kappa Delta Pi 4

WM. J. STUBBLEFIELD
Benham, Ky.
B.S.
Health and Physical
Ed.
Biology Club 2, 3, 4

BETTY J. DOZIER
Versailles, Ky.
B.S.
Elementary Ed.
Y.W.C.A. 1, 2, 3
Messiah 2, 3, 4
World Affairs 3, 4

JOSEPH M. GILL
Shelbyville, Ky.
B.S.
Physical Ed.



VERNON E. COOPER
Fonthill, Ky.
B.S.
Biology
Biology Club 3, 4
Caduceus Club 4

E. D. HENDERSON
Winchester, Ky.
B.S.
Elementary Ed.

ROSS D. HERRON
Covington, Ky.
A.B.
Social Science
Northern Ky. Club 1,
2, 3
E Club 1, 2, 3, 4
President 4
Football 1, 2, 3, 4
Kappa Delta Pi 4
Who's Who 4

ANN GILMORE GOVER
Somerset, Ky.
A.B.
History
Y.W.C.A. 1, 2
Progress Staff 3
Drum and Sandal 3, 4
W.R.A. 1, 2, 3, 4

M. J. CUNNINGHAM
Ashland, Ky.
A.B.
Social Science
Debate Team 3, 4
Newman Club 3, 4
Tennis Team 3, 4

PATSY P. COTTRELL
Liberty, Ky.
B.S.
Elementary Ed.

GERALDINE
BETTINGER
F. Mitchell, Ky.

B.S.
Biology
Biology Club 2, 3, 4
Sec. 3, 4
Caduceus Club 1, 2, 3, 4
Pres. 4
Northern Ky. Club 1,
2, 3

JOSEPH L. RICH
Covington, Ky.

A.B.
History
Class Treas. 1, 2
Little Theater Club 2,
3, 4
V. Pres. 2, Pres. 3
World Affairs Club 2,
3, 4
Treas. 2, V. Pres. 4
Canterbury Club 4
Alpha Psi Omega 4
Sigma Tau Delta 4
Sigma Lambda 4
Messiah Chorus 1, 2,
3, 4
Debate Team 3, 4
Who's Who 4
Class Pres. 3

MARTHA J. WILLIAMS
Coral Ridge, Ky.

B.S.
Phy. Ed.
W.R.A. 3, 4
Pres. 4
Biology Club 3, 4
Y.W.C.A. 4

ROY DEAN ROGERS
Glouster, Ohio

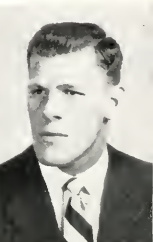
B.S.
Commerce
Y.M.C.A. 1, 2, 4
V. Pres. 4
Sigma Tau Pi 3, 4
Milestone Staff 4
Wesley Foundation 2,
3, 4, V. Pres. 3

MARY L. SININGER
Maysville, Ky.

B.S.
Biology
Y.W.C.A. 1, 2, 3, 4
Cabinet 2, 3
KYMA 2, 3
Biol. Club 2, 3, 4
Treas. 4, Sec. 2
Caduceus Club 1, 2, 3,
4, Sec. 3, 4
Collegiate Pentacle 4
Treas. 4

EGRE E. LEWALLEN
Harlan, Ky.

B.S.
Phy. Education
E Club 1, 2, 3, 4
Harlan Co. Club 1, 2



VIRGIL WAYNE COOK
Berea, Ky.

B.S.
Ind. Arts
Band 1, 3, 4
Football 2

ANN E. HACKLEY
S'anford, Ky.

B.S.
Commerce
Photo Club 2, 3, 4
V. P. 2, Treas. 3
Sigma Tau Pi 3, 4
Wesley Foundation 1, 2
Pi Omega Pi 3, 4
Milestone Staff 4

PAUL L. TRIESCHMAN
Bellevue, Ky.

B.S.
Commerce
Northern Ky. Club 2, 3
Tennis Team 2, 3, 4
E Club 4

JANE MOBERLY
Moberly, Ky.

A.B.
English
Canterbury Club 2, 4
Cwens 2
Progress 3
Sigma Tau Delta 4
W.R.H.O. 2, 4

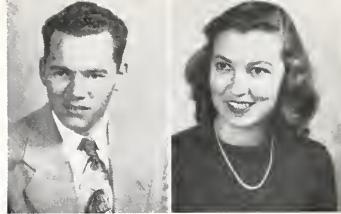
EUGENE F. LEFEBVRE
Valley Stream, N.Y.

A.B.
Social Science
Sigma Lambda 3, 4
Bus. Mgr. 3, Pres. 4
Alpha Alpha Psi 4
Progress 1, 2
Milestone 4
Episcopal Canterbury
1, 2, 3
Pres. 1, Treas. 2
YMCA 1, 2, 3, 4
Choir 1, 2, 3
Messiah 1, 2, 3, 4
Kyma Club 2, 3, 4

ANN E. CALMES
Irvine, Ky.

B.S.
Home Ec.
Home Ec. Club 1, 2, 3,
4
Messiah 1, 2, 3, 4

SENIORS



CLARENCE L. HEISS
Burtonville, Ky.
A.B.
Social Science
Chess Club
Vice Pres. 4

JEANETTE S. RUSSELL
Liberty, Ky.
B.S.
Math
Math Club 3, 4
Y.W.C.A. 3
Messiah 3, 4
Class Treas. 4

WILLIAM T. BARNES
Cynthiana, Ky.
B.S.
Ind. Arts
Ind. Arts Club 3

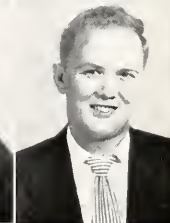
CLARA L. TAYLOR
Pineville, Ky.
A.B.
English
Canterbury Club 3, 4
Sec. 4
World Affairs Club 4
Kappa Delta Pi 4

CARL C. EAGLE
Loyall, Ky.
A.B.
History
Basketball 1, 2, 3, 4
Football 4
Baseball 1, 2, 3, 4
E Club 1, 2, 3, 4
Harlan Co. Club 2, 3

SHIRLEY ANN SPIRES
Elizabethtown, Ky.
A.B.
English
W.R.A. 1, 2, 3
Sigma Lambda 3
Canterbury Club 3, 4
Sigma Tau Delta 3, 4
Sec. Treas. 4
Belle Lettres editor 4

GENE ROLLIN ADKINS
Gravel Switch, Ky.
B.S.
Math
B.S.U. 4

BETTY LOU LOCKE
Kettle Island, Ky.
B.S.
Home Ec.
Home Ec. Club 1, 2, 3, 4
Y.W.C.A. 1, 2



ATHALEE M. TURNER
Covington, Ky.
B.S.
Elementary Ed.

DONALD M. AKIN
Danville, Ky.
B.S.
Commerce
World Affairs 4
E Club 4
Math Club 2
Track 1, 2, 4
Sigma Tau Pi 4

SHIRLEY M. PETTIT
Norwood, Ohio
B.S.
Elementary Ed.
Northern Ky. Club 1, 2, 3
YWCA 1
World Affairs 3, 4
Sec. 4
Progress 1, 2, 3
W.F.H.O. 3

VERTIS E. TARTER
Russell Springs, Ky.
A.B.
Social Science

ELIZABETH C. HAMON
Frankfort, Ky.
B.S.
Home Ec.
Home Ec. Club 1, 2, 3, 4
Photo Club 2, 3
Y.W.C.A. 1

WILLIAM B. LETHGO
Ravenna, Ky.
A.B.
Geography

FARMER MORGAN
Wendover, Ky.
B.S.
Ind. Arts

THELMA BOWMAN
Annville, Ky.
B.S.
Elementary Ed.
W.R.A. 4

JACK JONES
Danville, Ky.
A.B.
Social Science
Track 3, 4
E Club 4

LUCILLE ERNST
Louisville, Ky.
A.B.
Music
Band 1, 2, 3
Choir 1, 2, 3
Messiah I, 2, 3
Music Club 1, 2, 3
Student U. Mus. Comm.
2, 4
Y.W.C.A. 2

TEVIS HUGUELY
Richmond, Ky.
A.B.
Art
Little Theatre Club 2
Messiah 1, 2

DORIS SCHUH
Park Forest, Ill.
B.S.
Math
Math Club 2, 3, 4
Sec. 4



SUE GAINES
Lancaster, Ky.
B.S.
Elementary Ed.

APTON KORDENBROCK
Covington, Ky.
A.B.
History
Basketball 1, 2, 3
Northern Ky. Club 2
3

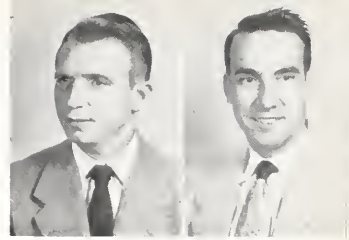
JOYCE PARKS
Insull, Ky.
B.S.
Commerce
Kyma 1, 3, 4
Sigma Tau Pi 3, 4
Y.W.C.A. 3, 4
Messiah 1, 3

HOWARD GRACEY
Coraopolis, Pa.
B.S.
Phy. Ed.
Football 1, 2, 3, 4
Baseball 2, 3, 4
E Club 2, 3, 4

FREDDIE ENGEL
Beattyville, Ky.
B.S.
Commerce
Sigma Tau Pi 4
Y.M.C.A. 4

HAROLD HALL
Ermine, Ky.
B.S.
Math
Math Club 1, 2, 3, 4
Photo Club 1

SENIORS



FORREST D. ELLIOTT
Allen, Ky.
B.S.
Commerce

MARTIN HUGHES
Levi, Ky.
B.S.
Commerce
Y.M.C.A. 1
Sigma Tau Pi 1
Pi Omega Pi 4

SOPHIE GOOLMAN
Winchester, Ky.
B.S.
Elementary Ed.
Wesley Foundation 4

JEROME YOUNG
Stearns, Ky.
Phys. Ed.
Progress 1, 2, 3

HELEN BURKE WELLS
Prestonsburg, Ky.
B.S.
Commerce
W.R.A. 1, 2
Y.W.C.A. 1, 2, 3
Drum & Sandal 2, 3
Progress editor 3
Class Sec. 2
WRHO 3
Milestone 3
Little Theatre 4
Who's Who 4

RAY SCHWERTMAN
Pt. Thomas, Ky.
A.B.
Geography
Wesley Foundation 1
Y.M.C.A. 3
Northern Ky. Club 2, 3
Messiah 2

MARGARET HERTZER
Somerset, Ky.
B.S.
Commerce
Kappa Pi 3, 4
Treas. 4

GUY STRONG
Irvine, Ky.
B.S.
Phys. Ed.



WILLIAM PARK
Richmond, Ky.
B.S.
Chemistry
Wesley Foundation 1,
2, 3, 4; Treas. 3; V
Pres. 4
Y.M.C.A. 4
Treas. 3
Milestone 4

ANNE EDWARDS
Richmond, Ky.
B.S.
Elementary Ed.
Off Campus Club 3, 4

ENOCH SILER
Jellico, Tenn.
B.S.
Elementary Ed.

CURTISS VICKERS
Cave City, Ky.
A.B.
English
W.R.A. 1, 2
Music Club 1, 2, 3, 4
Photo Club 4
Milestone Staff 3, 4
Canterbury Club 4
Messiah 3, 4
Little Theater Club 1, 2
Band 3, 4
Sigma Lambda 3, 4
Choir 2, 3, 4

OVAL MORGAN
Mill Pond, Ky.
B.S.
Health & Phys. Ed.
Ag. Club 1, 2, 3, 4

LEVODAS LYKINS
Malone, Ky.
B.S.
Elementary Ed.
B.S.U. 3
Y.W.C.A. 3

EARL T. McQUEEN
Bond, Ky.
B.S.
Commerce
World Affairs 4
Sigma Tau Pi 4

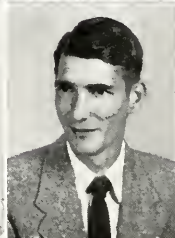
ELLA JEAN VENABLE
Richmond, Ky.
B.S.
Elementary Ed.
Wesley Foundation 2,
3, 4
Photo Club 4

WILLIAM C. BUCKLEY
Berea, Ky.
A.B.
Social Science

CHARLES B. CARTY
Richmond, Ky.
B.S.
Chemistry
Caduceus Club 1, 2, 3,
4
Biology Club 2, 3, 4

MARY LEE BROOKS
Shepherdsville, Ky.
B.S.
Math
Westminster Fellow-
ship 1, 2, 3, 4
Treas. 2
V. Pres. 3
Council 4
Y.W.C.A. 1, 2
Math Club 1, 2, 3, 4
Sec. 3
Cwens 2
Sec. 2
Senior Advisor 4
Collegiate Pentacle 4
Vice Pres. 4
Who's Who 4

CARL J. EVERSOLE
Richmond, Ky.
A.B.
Social Science
Rifle Team 2, 3, 4



WILMA J. BROUGHTON
Richmond, Ky.
B.S.
Elementary Ed

JOHN A. HARRISON
Louisia, Ky.
A.B.
Social Science

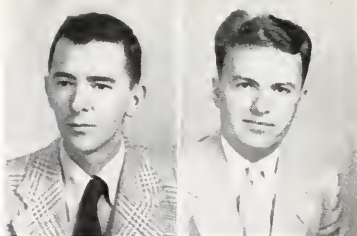
GEORGE H. HEMBREE
Richmond, Ky.
B.S.
Chemistry
Math Club 2, 3, 4
Who's Who 3
Milestone 4

KATHLEEN VIRGIN
Oldtown, Ky.
B.S.
Commerce
Y.W.C.A. 2, 4
W.R.A. 2, 3, 4
C.S.F. 1, 2

JOE WELLS HARPER
London, Ky.
B.S.
Phys. Ed.
Basketball 1, 2, 3, 4
Baseball 2
Track 2, 4
E Club 1, 2, 3, 4
Class V. Pres. 3
Who's Who 4
Asst. Basketball Coach
4

RAY AUSTIN COY
Richmond, Ky.
B.S.
Geography

SENIORS



HAROLD H. JENKINS
Richmond, Ky.
B.S.
Science

JAMES H. SALISBURY
Wayland, Ky.
B.S.
Elementary Ed.

ALICE K. TULLY
Trinity, Ky.
B.S.
Elementary Ed.
Y.W.C.A. 3

PAUL E. WILSON
Lothair, Ky.
A.B.
Social Science
Class Pres. 4
World Affairs Club 3
Vet's Club 1
Perry Co. Club 1
Who's Who 4

J. HILL HAMON
Danville, Ky.
B.S.
Biology
Caucucus Club 2, 3, 4
Treas. 3
Biology Club 2, 3, 4
V. Pres. 3
Photo Club 2, 3, 4
V. Pres. 3
Milestone 2, 4

HAZEL M. RUNYON
Catlettsburg, Ky.
B.S.
Elementary Ed.
WRHO 1
Messiah 1, 2
Y.W.C.A. 1
Progress 2

WALTER PRATER
Hindman, Ky.
A.B.
Social Science
Photo Club 2
Vet's Club 2, 3
Y.M.C.A. 3

FRANKLIN HAYNES
Somerset, Ky.
B.S.
Industrial Arts



EARL SHAW
Crab Orchard, Ky.
B.S.
Phys. Ed.

VIRGINIA C. WRIGHT
Pikeville, Ky.
B.S.
Commerce
Sigma Lambda 3
Messiah 3

ROBERT N. GRISE
Richmond, Ky.
A.B.
English
Canterbury Club 1, 2, 3, 4
Sigma Tau Delta, 3, 4
Wesley Foundation 1, 2, 3, 4
Council 3, 4
Progress 1, 2, 3
Sigma Lambda 3, 4
Who's Who 4

GEORGE PAVLOVICH
McKees Rocks, Pa.
B.S.
Commerce
E Club 2, 3, 4
Football 1, 2, 3, 4

FLORENCE CHILDRESS
Louisville, Ky.
A.B.
Music
Music Club 1, 2, 3, 4
Treas. 3
Choir 1, 2, 3
Messiah 1, 2, 3, 4
Band 2, 3
Y.W.C.A. 2, 3, 4
Pres. 4
Collegiate Pentacle 4
Kappa Delta Pi 4
Who's Who 4

HAROLD DAVIDSON
Clover Bottom, Ky.
B.S.
Elementary Ed.

ROGER D. MOORE
Frankfort, Ky.
B.S.
Elementary Ed.

MARTHA ROSE MAY
Richmond, Ky.

B.S.
Commerce
Messiah 2, 3, 4
Orchestra 2, 3, 4
Kyma Club 3, 4
Sigma Tau Pi 4

KENNETH P. NORVELL
Danville, Ky.

B.S.
Biology
Y.M.C.A. 2, 3, 4
Vice Pres. 3
Sec.-Treas. 4
Kappa Delta Pi 3, 4
Biology Club 3, 4
Kyma Club 3, 4

RUTH SLONE DAMRON
Fikeville, Ky.

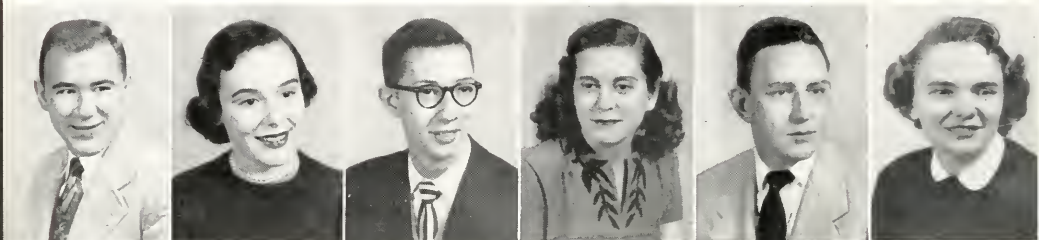
B.S.
Elementary Ed.
Milestone 4
Photo Club 4
Kappa Delta Pi 4

BILLY K. GORDON
Sellersville, Ky.

B.S.
Commerce
B.S.U. 1, 2, 3, 4
Sigma Tau Pi 3, 4
Class V, Pres. 1
Class Treas. 3

MARTHA BELLE DUNN
Buena Vista, Ky.

B.S.
Elementary Ed.
Y.W.C.A. 1
Messiah 4



ELMER TOLSON
Campton, Ky.
B.S.
Commerce
Basketball 1, 3, 4

MORRIS D. FREEMAN
Louisville, Ky.

B.S.
Commerce
B.S.U. 1, 2, 3, 4
Treasurer 3
President 4
Math Club 2, 3, 4
Treasurer 4
YMCA 3, 4

MILDRED GOODLETT
Bendville, Ky.

B.S.
Commerce
Sigma Tau Pi 3, 4
Pi Omega Pi 3, 4

LEILA C. HAMMONS
Stanford, Ky.

B.S.
Home Ec.
Y.W.C.A. 1
Home Ec. Club 1, 2, 3,
4

V. A. VENETTOZZI
Altoona, Penn.

A.B.
English
Debate Team 2, 3
Captain 2, 3
Sigma Lambda 2, 3, 4
Sigma Tau Delta 3, 4
Student Union
Committee 4

ROBERT DEDMAN
Willisburg, Ky.

A.B.
Social Science

SENIORS



WILLIAM J. WESLEY
Liberty, Ky.
B.S.
Industrial Arts



BERNARD P. WOREK
Crab Orchard, Ky.
B.S.
Commerce

DAN B. TURNER
Sebastian's Branch,
Ky.

A.B.
Soc. Science

LOIS BLANCHÉ COMBS
Richmond, Ky.

B.S.
Home Economics
Home Ec. Club 4
Messiah 4

GEORGE S. VARDEN
Paris, Ky.

A.B.
English
Milestone 3, 4
Asst. Ed. 3
Editor 4
Sigma Lambda 3, 4
Canterbury Club 3, 4
President 4
Who's Who 4

JESSE HOLBROOK, JR.
Kona, Ky.

B.S.
Math
Industrial Arts Club 4

EVELYN JEAN ROGERS
Richmond, Ky.

A.B.
English
Canterbury Club 1, 2,
3, 4; Vice. Pres. 2
President 3
Progress 2
Off-Campus Club 2, 3,
4
President 3, 4
Sigma Tau Delta 3, 4
Secretary 3
Vice Pres. 4
Kyma Club 2, 3, 4
Treasurer 4
Collegiate Pentacle 4
Secretary 4
Sigma Lambda 3
Who's Who 4

EDWARD GRIFFITH
Juan, Ky.

A.B.
Social Science



WALTER N. STACY
Jackson, Ky.
B.S.
Industrial Arts
Industrial Arts Club 4



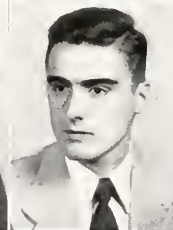
BRIAN ADRIAN GIBBS
Crockettsville, Ohio
B.S.
Physical Ed.
Football 1, 2, 3, 4
Baseball 3
Track 1, 2
E. Club 2, 3, 4



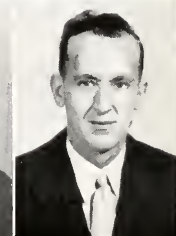
M. ANNE SMITHERS
Irvine, Ky.
B.S.
Home Economics
Off-Campus Club 3
Vice Pres. 3
Home Ec. Club 3, 4
Y.W.C.A. 3
Wesley Foundation 3



M. V. BERRYMAN
Richmond, Ky.
B.S.
Elementary Ed.
Messiah 1, 3, 4
Off-Campus Club 3



ALFRED P. BIANCHI
Chicago, Ill.
A.B.
Geography
World Affairs Club 2,
3, 4
Little Theatre Club 2



LEE JOHNSON
Booneville, Ky.
B.S.
Health and Physical
Ed.

C. H. VIPPERMAN
South Williamson, Ky.
B.S.
Commerce

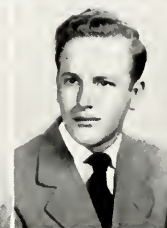
NANCY PRICE WESLEY
Liberty, Ky.
B.S.
Elementary Ed.

MARCELLA JOHNSON
Waynesburg, Ky.
A.B.
Social Science
Choir 1
B.S.U. 2, 3
Messiah 2, 4

WM. E. PEARSON, JR.
Waco, Ky.
B.S.
Biology
Biology Club 4
Caduceus 2, 3, 4

C. R. RICHARDSON
Pikeville, Ky.
B.S.
Commerce
Sigma Tau Pi 4

RICHARD W. PAGE
Ludlow, Ky.
B.S.
Physical Ed.



GEORGE H. HAARMAN
Yosemite, Ky.
B.S.
Elementary Ed.

COLEMAN BOYD WITT
Richmond, Ky.
B.S.
Biology
Caduceus 1, 2, 3, 4
Biology Club 4
Milestone 4
Bus. Manager 4
Who's Who 4

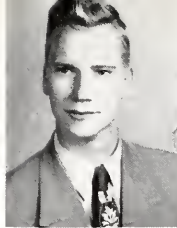
BOBBIE J. BURKICH
Norton, Va.
B.S.
Home Ec.
Drum & Sandal 2, 3
Sec. 3
Home Ec. Club 2, 3, 4
Sigma Lambda 4

BONNIE I. FLANARY
Cynthiana, Ky.
B.S.
Elementary Ed.
Band 1
Wesley Foundation 1, 2
President 3
World Affairs 4

ED. MORRISON
Haley, Ky.
B.S.
Commerce
Sigma Tau Pi 3, 4

ORAL NETHERY
Mt. Eden, Ky.
A.B.
History

SENIORS



LLOYD G. STINSON
Woodbine, Ky.
B.S.
Commerce



ISAAC RAMSEY
McKee, Ky.
B.S.
Industrial Arts

ARTIS HELM
Liberty, Ky.
B.S.
Elementary Ed.

J. R. MORRIS
Bendville, Ky.
B.S.
Commerce
Basketball 1

GEORGE NORTON
Dry Ridge, Ky.
B.S.
Commerce
Sigma Tau Pi 3, 4
Pres. 4
World Affairs 3, 4
Treas. 4

IMOGENE WERT
Paint Lick, Ky.
B.S.
Elementary Ed.

W. J. BUCK
Richmond, Ky.
B.S.
Commerce
Veterans' Club 1
Fulski Co. Club 1, 2
Sigma Tau Pi 2, 3, 4
Pi Omega Pi 4

IRVIN JONES
Irvine, Ky.
A.B.
Art



OLLIE JAMES BACK
Blackey, Ky.
A.B.
Social Science



PATRICIA POWERS
London, Ky.
A.B.
Music
Wesley Foundation 1
Kyma 1, 2, 3
Music Club 1, 2, 3
Sec. 3
Music Council 1, 2, 3
Treas. 4
Cheerleader 1, 4
Messiah 1, 2, 3
Chorus 1, 2, 3
Band 2
Drum & Sandal 4
Cwens 2
Who's Who 4



KATHLEEN KENNEY
Walton, Ky.
B.S.
Commerce
Pi Omega Pi 3, 4
V. Pres. 4
Sigma Tau Pi 3, 4
Sec. 4
West. Fellowship 1, 2,
3, 4
Band 1
Progress Staff 1, 2
Photo Club 1, 2
Y.W.C.A. 1, 2



ROBERT FAUST
Pt. Thomas, Ky.
B.S.
Social Science
Football 1, 2, 3, 4
E Club 2, 3, 4
Newman Club 1, 2, 3, 4
Northern Ky. Club 1,
2, 3



MARILYN WALKER
Newport, Ky.
B.S.
Health and Physical
Ed.
Y.W.C.A. 1
WRA 1, 2, 3, 4
Episcopal Canterbury
1, 2, 3, 4



L. H. WHITE
Clo, Ky.
B.S.
Commerce
Y.M.C.A. 4
Sigma Tau Pi 4



RALEIGH COUCH
Hyden, Ky.

A.B.
Soc. Science
World Affairs Club 4

EMORY HARRIS
Anchorage, Ky.

B.S.
Chemistry
Band 1, 2, 3, 4
Messiah 3, 4
Sigma Lambda 3, 4
Biology Club 4
Choir 4
B.S.U. Council 3
Who's Who 4

LURLIE HOWARD
Laekey, Ky.

B.S.
Elementary Ed.
Y.W.C.A. 1, 2, 3
B.S.U. 1, 2

HAROLD KITTRELL
Richmond, Ky.

B.S.
Commerce
E Club 1, 2, 3, 4
Sigma Tau Pi 1, 2, 3, 4
Track 2
Football 1, 2, 3, 4

ANNA KATE RILEY
Richmond, Ky.

B.S.
Home Ec.
Home Ec. Club 4
Messiah 4

R. W. ROBERTS
Richmond, Ky.

A.B.
Geography
Swim Team 1, 4



MARY DOTT SIDWELL
Albany, Ky.

B.S.
Commerce

STANLEY HOLLAND
Hamilton, Ohio

B.S.
Elementary Ed.
Choir 1
Messiah 1
Kappa Delta Pi 4

BETTY SUE MURPHY
Owenton, Ky.

B.S.
Elementary Ed.
Messiah 1
C.Y.F. 1, 2
Photo Club 2
Y.W.C.A. 1, 2, 3
World Affairs Club 3,
4
Sigma Lambda 4
Milestone 4
Kappa Delta Pi 4

JAMES D. RUFFNER
Irvine, Ky.

B.S.
Biology
Biology Club 3, 4
Caduceus Club 3, 4
Vice President 4

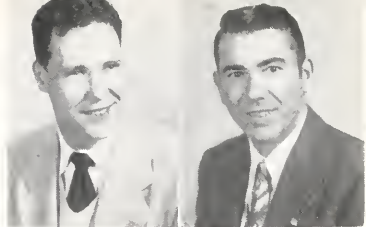
ROY E. MOORES
Richmond, Ky.

B.S.
Commerce
E Club 1, 2, 3, 4
Athletic Trainer 1, 2,
3, 4
Pi Omega Pi 3

GEORGE B. ISAACS
Lynch, Ky.

B.S.
Ind. Arts
Ind. Arts Club 3, 4
B.S.U. 4

SENIORS



GEORGE L. UTLEY
Henderson, Ky.
B.S.
Industrial Arts

SELDON LOCKARD
Oakdale, Ky.
A.B.
Social Science

LESTER RICHEY
McKinney, Ky.
A.B.
Social Science

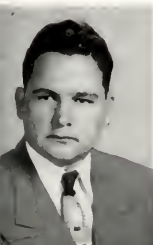
WALTER GREEN, JR.
Portsmouth, Ohio
A.B.
History
E Club 1, 2, 3, 4
Football 1, 2, 3, 4
Baseball 2, 3, 4

LAURA S. ATKISSON
Richmond, Ky.
A.B.
Music
Music Club 1, 2, 3, 4
Music Council 2, 3, 4
Sec. 3
Pres. 4
West. Fellowship 2, 3
Cwens 2
Collegiate Pentacle 4
Band 1, 3, 4
Orchestra 1, 2, 3, 4
Messiah Orch. 1, 2, 3, 4
Choir 2, 3
YWCA 1
Who's Who 4

H. E. RICHARDSON
Richmond, Ky.
A.B.
English

JAMES D. WERT
Covington, Ky.
B.S.
Math
Math Club 1, 2, 3, 4
Biology Club 2, 3, 4
Pres. 3

SYLVIA GAY
Onada, Ky.
A.B.
Art



KELLY P. DeSIMONE
McRoberts, Ky.
B.S.
Biology
Biology Club 2, 4
YMCA 4



BETTY JO WILLIAMS
Richmond, Ky.
B.S.
Home Ec.
Home Ec. Club 1, 2, 3, 4
President 3
Kyma 1, 2, 3, 4
Secretary 3
Cwens 2
Collegiate Pentacle 4
President 4
Milestone 4
Kappa Delta Pi 4
Class Secretary 4
Who's Who 4



ROBERT ROBERTSON
Gary, Ind.
B.S.
Commerce
Football 2, 3, 4
E Club 2, 3, 4
Sigma Tau Pi 4



BETTY JANE SMITH
LaGrange, Ky.
B.S.
Commerce
Pi Omega Pi 3, 4
President 4
Sigma Tau Pi 3, 4
YWCA 1, 2, 3
Secretary 3
Photo Club 2
Milestone 4
Sigma Lambda 4
C.Y.F. 1, 2
Kappa Delta Pi 1



PAULINE TINCHER
Berea, Ky.
B.S.
Elementary Ed.
Off-Campus Club 1, 2, 3
Secretary 2



ROBERT GRITTON
Salvisa, Ky.
B.S.
Elementary Ed.
World Affairs Club 4
President 4



ETTA LEE BRANHAM
Jellico, Tenn.
B.S.
Home Ec.

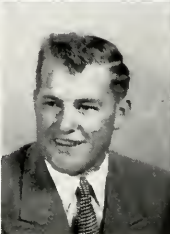
BILLY JOE TURPIN
Richmond, Ky.
A.E.
Social Science
Vet's Club 1, 2

MATTIE JOSEPH
Richmond, Ky.
B.S.
Home Ec.
Home Ec. Club 3, 4
YWCA 3, 4

BOBBY BURKICH
Neon, Ky.
B.S.
Biology
Biology Club 2, 3, 4
Treasurer 3
Caduceus 3, 4
Sigma Lambda 4

KATHLEEN JUSTICE
Millard, Ky.
B.S.
Commerce
Pi Omega Pi 3, 4
Secretary 4
Sigma Tau Pi 3, 4
Treasurer 4
Progress 1, 2
WRHO 3
B.S.U. 1, 2, 3, 4
Y.W.A. 1, 2
W.R.A. 1
Who's Who 4

THOMAS KELLY
Vico, Ky.
B.S.
Commerce
Sigma Tau Pi 4



WILLIAM J. HILL
Stone, Ky.
A.B.
Social Science

RALPH BURKE
Waddy, Ky.
B.S.
Commerce

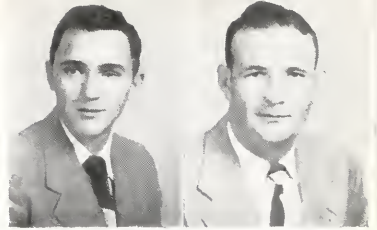
THOMAS MEYER
Aurora, Ind.
B.S.
Physical Ed.
Football 1, 2
Newman Club 1, 2, 3, 4

MARGARET JO JARBOE
Campbellsville, Ky.
B.S.
Physical Ed.
W.R.A. 4
W.R.H.O. 3

CHARLES HERTZNER
Corasopolis, Pa.
B.S.
Physical Ed.
E Club 1, 2, 3, 4
Football 1, 2, 3, 4
Baseball 1, 2, 3

THERESA CORNETTE
Pathfork, Ky.
A.B.
English

SENIORS



WILLIAM N. HENDREN
Paint Lick, Ky.
B.S.
Commerce
Track 2

CARL LEO DOSS
Dunnville, Ky.
B.S.
Education

TOGENE HAWKINS
Moorefield, Ky.
B.S.
Elementary Ed.

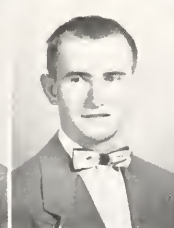
JAMES DUDDING
Ironton, Ohio
B.S.
Physical Ed.
Football 2, 3, 4
E Club 2, 3, 4
Milestone 4
Track 2, 3, 4

CAROL HARMON
Fine Knot, Ky.
B.S.
Elementary Ed.
Choir 2, 3, 4
Messiah 2, 3, 4
Drum & Sandal 3
Milestone 4
WRHO 4
Secretary 4
Kappa Delta Pi 4

WILLIAM STRONG
Hazard, Ky.
A.B.
History
Kyma 1, 2, 3
Centerbury Club 2, 4
Treasurer 4
World Affairs Club 3, 4
YMCA 1
Class President 2
Who's Who 4

MARILYN WARD
Harlan, Ky.
B.S.
Elementary Ed.
Drum & Sandal 2, 3, 4
President 3, 4
Harlan Co. Club 2, 3
President 2, 3
Class President 3
Messiah 3, 4
YWCA 2
Who's Who 4

JAMES ANDERSON
Bybee, Ky.
B.S.
Elementary Ed.
Photo Club 3



ARVIN BURDINE
Somerset, Ky.
A.B.
English
Choir 1, 2
Messiah 2

NORMA BROWN HOMES
Louisville, Ky.
A.B.
Music
BSU 2, 3, 4
Vice Pres. 3
Student Union Music
Com. 2, 3, 4; Treas. 3
Music 2
Junior Advisor 3
Music Club 1, 2, 3
Orchestra 1, 2, 3, 4
Band 1
Choir 1
Messiah 1, 2, 3

JAMES E. BAECHTOLD
Coraopolis, Pa.
B.S.
Physical Ed.
E Club 2, 3, 4
Vice Pres. 3
Basketball 1, 2, 3, 4
Who's Who 4

VIRGINIA BERNARD
Hazard, Ky.
B.S.
Home Ec.
YWCA 1
Wesley Foundation 1
Secretary 1
Statefand Hall Pres. 4
Ferry County Club 1

DARNELL SALYER
Allen, Ky.
B.S.
Chemistry
Photo Club 2, 3, 4
BSU 2, 3, 4
Math Club 4
YMCA 4

GLEN HELTON
Ezel, Ky.
A.B.
Geography
Progress 2
YMCA 3
World Affairs Club 3
B.S.U. 3, 4

DONALD PASQUALE
Williamson, W. Va.

A. B.
Art
Kappa Pi 3, 4
President 4

RUTH JEAN WALSER
Ironton, Ohio

B. S.
Commerce
YWCA 1
Sigma Tau Pi 3, 4
Pi Omega Pi 3, 4
Messiah 4
Photo Club 4

JOHN DORMAN
Covington, Ky.

B. S.
Commerce
Rifle Team 2
E Club 3, 4
Secretary 4
Football 2, 3, 4
Class Vice Pres. 4

CATHERINE HUME
Taylorsville, Ky.

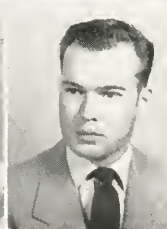
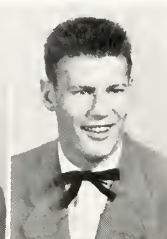
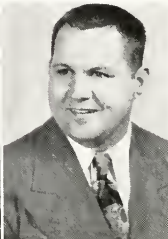
B. S.
Commerce
YWCA 2
Cwens 2
Sigma Tau Pi 3, 4
Messiah 4
Pi Omega Pi 4

DAVID SHOCKLEY
Falls Church, Va.

B. S.
Physical Ed.
Football 1, 2, 3, 4
E Club 1, 2, 3, 4
V. Pres. 4
Track 1, 2, 3, 4

ARROMA BRAY
Yosemite, Ky.

B. S.
Elementary Ed.



BILLIE SUE LOOPER
Granite Falls, N. C.
B. S.
Elementary Ed.

CLAUDE CALLAHAN
Conkling, Ky.
B. S.
Math

CHARLOTTE REES
Mayslick, Ky.
B. S.
Home Ec.
Home Ec. Club 1, 2, 3,
4
Kyma Club 2, 3, 4
WRHO 3, 4
Treasurer 4

CECIL REEDER
Hopkinsville, Ky.
B. S.
Ind. Arts

ALICIA ERNST KELLY
Bradford, Ky.
B. S.
Home Ec.
Home Ec. Club 1, 2, 3,
4; Vice Pres. 3
YWCA 1, 2, 3, 4
WBHO 3
Pres. 3
Collegiate Pentacle 4
Messiah 2, 3

E. C. BROWN
Liberty, Ky.
B. S.
Health and Physical
Ed.

SENIORS



CHARLES L. JOHNSON
Virgie, Ky.
B.S.
Geography



BILLY J. TURNER
Drift, Ky.
B.S.
Physical Ed.

BILLY PARK
Richmond, Ky.
A.B.
History

JAMIE GRIGGS
Union Chy. Ky.
B.S.
Home Ec.
Home Ec. Club 2, 3, 4
Messiah 2
YWCA 3
B.S.U. 2, 3, 4
President 3
2nd Vice Pres. 4

KENNETH MASSEY
Somerset, Ky.
A.B.
Music
B.S.U. 2, 3, 4
Messiah 1, 2, 3, 4
Music Club 1
Pulaski Co. Club 1, 2
YMCA 2, 4
Band 1, 2, 3, 4
Choir 1, 2, 3, 4
Orchestra 1, 2

MATTIE HOLBROOK
Fine Ridge, Ky.
B.S.
Commerce
Pi Omega Pi 3, 4
Sigma Tau Pi 4
Who's Who 4
Kappa Delta Pi 4

CHARLES SMITH
Hazard, Ky.
B.S.
Commerce
Sigma Tau Pi 4

ELLA RUTH SMITH
Connersville, Ind.
B.S.
Elementary Ed.



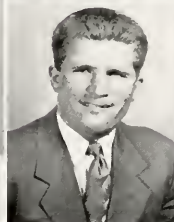
HAROLD WAMPLER
Mayking, Ky.
B.S.
Math



WILLIAM RIGGS
Portsmouth, Ohio
A.B.
History
Sigma Lambda 4



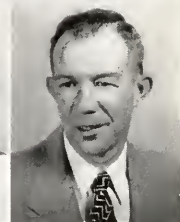
MAE FRAZIER
Summan, Ind.
B.S.
Elementary Ed.
Sigma Lambda 3, 4
Kappa Delta Pi 4



DAVID RODGERS
Loyall, Ky.
B.S.
Physical Ed.
E Club 1, 2, 3, 4
Football 1, 2, 3, 4
Choir 1, 2, 3



JUNE CLEAVER
Mt. Olivet, Ky.
A.B.
English
Wesley Foundation 1, 2, 4
Milestone 4
Photo Club 4
Sigma Lambda 4
W.R.A. 2
Little Theater Club 2
Canterbury Club 4



HARRY MANSFIELD
Russell, Ky.
B.S.
Math

CARL SIZEMORE
Hyden, Ky.
B.S.
Industrial Arts
Vet's Club 1

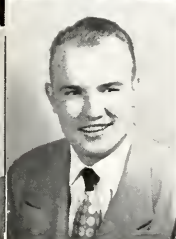
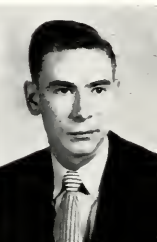
LAQUATA W. BROOKS
Cumberland, Ky.
B.S.
Elementary Ed.
Harlan Co. Club 1, 2, 3
Little Theatre Club 2,
3, 4
Alpha Psi Omega 4
Messiah 1
Choir 1

LEO PERRY
Gifford, Ky.
A.B.
Social Science

JOHN C. RYAN
Pine Knot, Ky.
B.S.
Industrial Arts

MARY E. BREWER
Jackson, Ky.
B.S.
Home Ec.
Home Ec. Club 3, 4

THOMAS FRICHARD
Louisa, Ky.
B.S.
Physical Ed.



FRANKLIN SANDERS
Praise, Ky.
A.B.
Social Science
Milestone 4

CHESTER STEPHENS
Whitley City, Ky.
B.S.
Biology

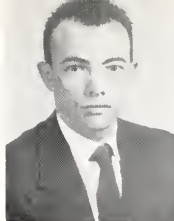
GEORGEANN R. SMITH
Shelbyville, Ky.
B.S.
Commerce
Kyma 1
Messiah 1, 2
WRA 1, 2
YWCA 1, 2
Sigma Tau Pi 4
Pi Omega Pi 4

ROGER GEYER
Vallonia, Ind.
B.S.
Industrial Arts
E Club 3, 4
Basketball 1, 2, 3, 4
Track 1

ELIZABETH PARK
Richmond, Ky.
B.S.
Elementary Ed.
Kyma 1, 2, 3, 4
Vice Pres. 3
Who's Who 4

LESTER MARTIN
Drift, Ky.
B.S.
Elementary Ed.

SENIORS



OMAR HACKER
Manchester, Ky.
B.S.
Elementary Ed.



NELSON HAMILTON
Fedsreek, Ky.
A.B.
English

VINSTON ADKINS
Pikeville, Ky.
B.S.
Elementary Ed.

LAURENCE BUSKIRK
Ashland, Ky.
A.B.
Social Science
World Affairs Club 3

JOE SMITH
Burlington, Ky.
B.S.
Math 1
B.S.U. 1, 2, 3, 4
1st Vice Pres. 4
B.S.U. Council 2, 3, 4
Math Club 1, 2, 3, 4
Canterbury Club 3, 4
Baseball 3, 4
Who's Who 4

JOYCE ANN LEWIS
Guerrant, Ky.
A.B.
History
Messiah 3, 4
Kyma Club 3
B.S.U. 3

LEONARD BLACK
Summit Station, Ohio
B.S.
Commerce
Sigma Tau Pi 4
Sigma Lambda 3

JEAN COOK
Lejunior, Ky.
B.S.
Elementary Ed.



WENDELL FLOYD
Waynesburg, Ky.
B.S.
Elementary Ed.



BARBARA HUTTON
Berry, Ky.
B.S.
Elementary Ed.
YWCA 1, 2
Messiah 1
World Affairs Club 3, 4



KARL KEPLER
Covington, Ky.
A.B.
Social Science
Basketball 1, 2
Asst. Basketball Coach
4
Northern Ky. Club 3
World Affairs Club 3, 4
Little Theater Club 4



WILLIAM McCOMAS
Russell, Ky.
A.B.
History
Progress 4
Track 4
Kyma 4
Photo Club 4



JOHNNIE MORGAN
Crab Orchard, Ky.
B.S.
Commerce
B.S.U. 1, 2, 3, 4
Secretary 3, 4
Pi Omega Pi 3, 4
Sigma Tau Pi 3, 4
Student Union Com-
mittee 3
YWCA 1, 2, 3, 4



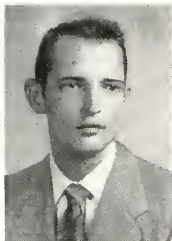
ROBERT TURNER
Booneville, Ky.
A.B.
Social Science
World Affairs Club 3

KENNETH CHANDLER
 London, Ky.
 B.S.
 Biology
 Biology Club 3
 Caduceus Club 3

ELIZABETH B COX
 Walton, Ky.
 A.B.
 History
 W.R.A. 3
 Math Club 2, 3

WILLIAM SLAGLE
 Everts, Ky.
 B.S.
 Biology

JIMMY STAMBAUGH
 Jenkins, Ky.
 B.S.
 Chemistry
 Band 2
 Math Club 3, 4
 YMCA 3, 4



JOHN TURNER
 Covington, Ky.
 A.B.
 Social Science

RICHARD FLATT
 Tonia, Ky.
 A.B.
 Social Science

ELIZABETH DIEHL
 Louisville, Ky.
 A.B.
 English
 YWA 1
 YWCA 3, 4
 B.S.U. 2, 3, 4
 Greater Council 3
 Canterbury Club 3, 4
 Vice President 3, 4

SENIORS

GRADUATES

WM. EVERETT STRONG
Brownsville, Ind.



BEULAH I. HUMPLEET
Place, Ky.



WALTER A. BOWLING
Bowlingtown, Ky.



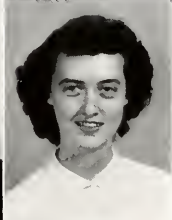
JAMES E. WALTERS
Pineville, Ky.



ROBERT F. DUGGER
Corbin, Ky.



SARA M. GRIGGS
Richmond, Ky.



CLETA BENTLEY
Berea, Ky.



CHARLES ED SMITH
Connersville, Ind.



JESS R. WHITE
Wilhamsburg, Ky.



GROVER B. TURNER
Richmond, Ky.



LENA WHITE
Duluth, Ky.



JESSIE F. ARNEY
Ravenna, Ky.



HERMON SPARKS
McKee, Ky.



BURGOYNE MOORES
Richmond, Ky.



ELZIE O. PURCELL
Richmond, Ky.



GRADUATES

CLYDE SENTERS
Betsy Layne, Ky.



RAYMOND WILSON
Oneida, Ky.

SOPHIA N. ALLEN
Richmond, Ky.

WILLIS H. JUSTICE
Millard, Ky.



JAMIE C. DEARING
Richmond, Ky.

ALVIN G. HATFIELD
Richmond, Ky.

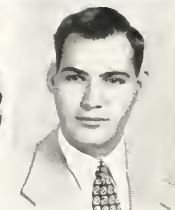
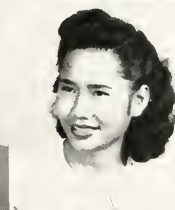
EVA MINERVA DUKA
Legaspi, Philippines



WILLIAM B. SISCO
Bardstown, Ky.

THURSTON W. KIRBY
Danville, Ky.

ROBERT C. POINTS
Covington, Ky.



J. D. SHIFFLETT
Middlesboro, Ky.

AVELINE ANTONIO
Baganga, Philippines

KENNY FARMER
Hardinsburg, Ind.



JOHN A. WATSON
Middlesboro, Ky.

ROGER O. HOFFMAN
Ft. Thomas, Ky.

GRADUATES

ALEX W. STEVENS
Gravel Switch, Ky.



MARY LOU MATTOX
Richmond, Ky.



JAMES A. WATSON
Middlesboro, Ky.



ROBERTA E. SPENCER
Louisville, Ky.



JOHN C. EVERSOLE
Krypton, Ky.



ROBERT A. EVANS
Corbin, Ky.



JAMES WILLIAM WILSON
Tyner Ky.



TEODORA L. CORPUZ
Manila, Philippines







Juniors

152



JUNIOR CLASS OFFICERS

KEITH WIGGINS ----- President

TOMMY WARD ----- Vice-President

JULIA ANN JOHNSON ----- Secretary

NEVILLE SMITH ----- Treasurer

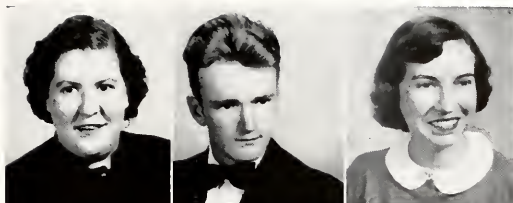
MR. W. L. KEENE ----- Sponsor



JOYCE COMBS
Vico

JEWELL BOTTOM
Mackville

CHARLES McQUEEN
Tyner



EDGAR KIDWELL
Richmond

ROBERT ELDER
Richmond

NORMA GSCHWIND
Erlanger



ANN COVINGTON
LaGrange

BETTY CAROLE OSBORNE
Kenvir

CHELIS HAMMONS
Prestonsburg



CHARLES LAMB
Richmond

RICHARD DAMRON
Pikeville

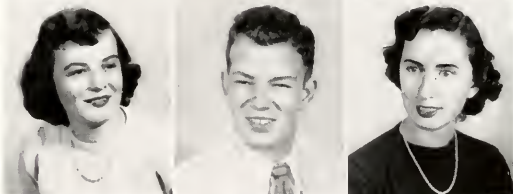
MARY MARTHA WILLIAMS
Prestonsburg



NORMA RICHARDSON
Richmond

BARBARA WELCH
West Irvine

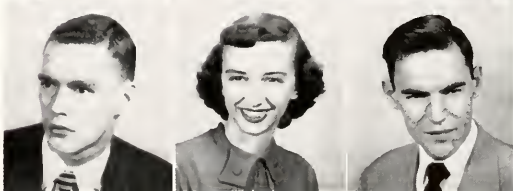
CHALMER VINEYARD
Pneville

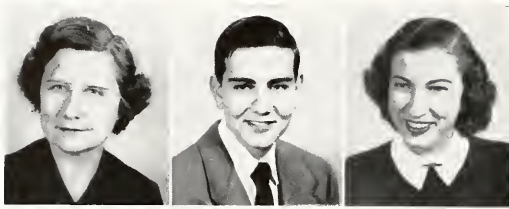


JOHN B. NOLAND
Richmond

HAROLD JUDD
Gray Hawk

BONNIE NEVINS
Lawrenceburg





BEATRICE ESTES
Shopville

JEAN SEELEY
London

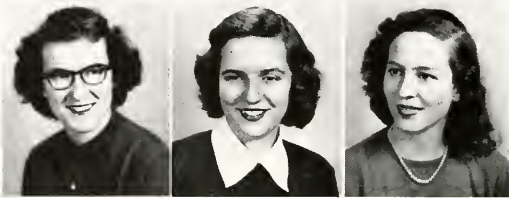
ROBERT FORD
Ferguson



TOMMY MACK GRISE
Richmond

WILLIAM E. ADAMS
Lexington

NORMA PICKETT
Greensburg



EVELYN HALL
Hazard

DORIS LEWIS
Jackson

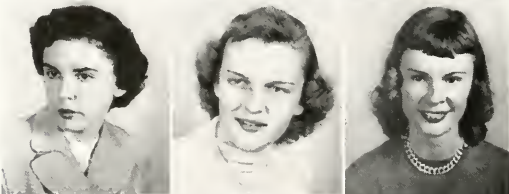
ELEANOR JONES
Winchester



CLAY MOORE
Danville

RICHARD D. HOWARD
Hueysville

LILA JUNE CREPPS
Richmond



ANN FRANKLYN STEVENS
Irvine

KITTY PARSONS
Ashland

MARY AUXIER FORD
Prestonsburg



THOMAS LISLE
Irvine

LEAMON LEE
Oaks

BILLYE JEAN ENGLE
Lancaster

LAWRENCE DANIELS HENRY DOTY
Portsmouth, Ohio Albany, Ga.

PATSY PURKEY
Berea



LENA MULLINS FLORENCE HUSSUNG
Berea Louisville

HARRY WILSON
Strunk



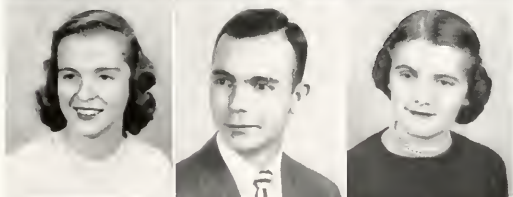
WILLIAM GREYNOLDS EVAN HARROD
Loyal New Castle

ALINE SHELTON MULLINS
Monticello



BARBARA ANN BARBER ALICE ANN REDMON
Ashland M. llersburg

WILLIAM F. GHENT
Kitts



NOEL GATLIFF JOHN McKINNEY
Rockholds Lancaster

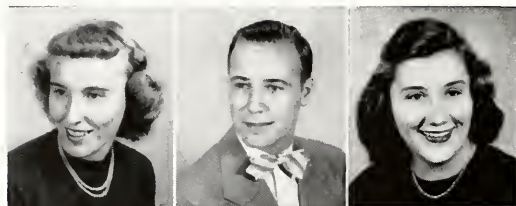
MARGY GOVER JOHNS
Somerset



DOTTY KATE BERRY LAURA ELLIS
Booneville Ludlow

DONALD KNOWLAND
Jeffersonville, Ind.





JANE PARKS
Louisville

MARTHA PRATHER
Versailles

ARCHIE WARE
Shelbyville



CARL WHITE
Ironton, Ohio

EDWIN BRANSCUM
Whitley City

THELMA BENGÉ
London



HANNAH KETZNER
New Albany, Ind.

JANE SKAGGS
Hodgenville

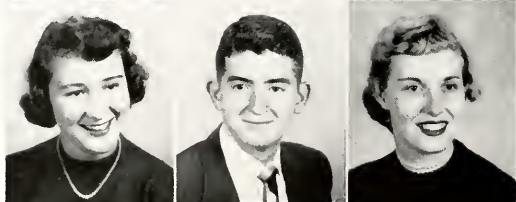
WALT KENNY
Paris



JAMES KIRBY
Irvine

KEITH WIGGINS
Covington

JUANITA ROWLETTE
Berea



JENNIE LOU STEIL
Ashland

KAY WILSON
Bel'evue

WILLIAM MYERS
Cumberland



LELAND CRABTREE
Monticello

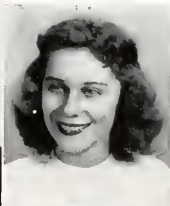
TED MITCHELL
Corbin

MARGARET JANE SLUSHER
Warbranch

ELMO MARTIN
Brutus

FRANK MATTHEWS
Cynthiana

BETTY HEROLD
Erlanger



RAMONA COMBS
Winchester

PEGGY JONES
New Castle

CHARLES GIBSON
Richmond



JOSEPH HOLDERMAN
Texas

BILLIE SEARLS
Newsonville, Ohio

JANET DAMRON
Catlettsburg



NANCY CURRY
Richmond

ALMA FAYE CAMPBELL
Hazard

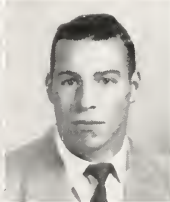
SHIRLEY KEARNS
Cynthiana



CHARLES PROFFITT
Loyall

CHARLES SCHMITT
Wheaton, Ill.

JULIA ANN READNOWER
Franklin, Ohio



JULIA ANN JOHNSON
Williamsburg

JEAN McINTOSH COX
Cincinnati, Ohio

GAYNOR CALDWELL
Morning View

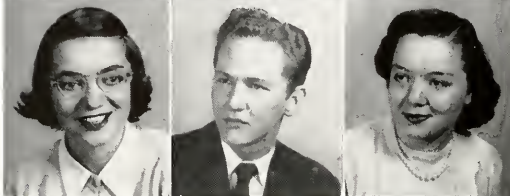




ISOM STEPHENS
Fredville

MATTHEW YOUNG
Louisa

ANNA MARIE BROUGHTON
Richmond



PEGGY ANN LEWIS
Bardstown

ARDELLE RIGGS
Winchester

CARLOS SINGLETON
Hazard



EDFORD WOLPINBARGER
Irvine

BILL VENDL
Cicero, Ill.

MAE BELLE MARTIN
Winchester



PATRICIA RICKEY
Cincinnati, Ohio

CONNIE McAULEY
Kona

RICHARD WILSON
Crooksville, Ohio



FLOYD READNOWHER
Franklin, Ohio

LEON KEEN
Buckhorn

ELLA MAE BRUCE
Richmond



GLENN JOHNSON
Burdine

LEE DIXON
Spider

ROBERT GARRETT
Richmond

THOMAS WARD
Harlan

KARL JONES
Huntington, W. Va.

ELVIRA SHORT
Richmond



NELL WILSON
Carlisle

JACQUELIN HAYNIE
McComb, Miss.

EUGENE W. DAVIS
Pikeville



JOHN PAUL JONES
Lexington

GLENN CHEEK
Pineville

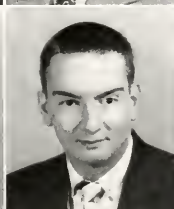
ARCHIE BEVERLY
Wayland



MARY FRANCES CARROLL
Lynch

EFFIE GILBERT
Ledders

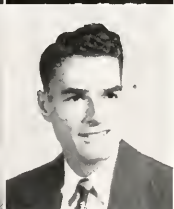
ROBERT POPE
Cynthiana



CHARLES SMITH
Jeffersonville, Ind.

JAMES STOVALL
Albany

GORDON FLECK
Berwyn, Ill.



JOYCE COOK
Stamping Ground

BETTY JANE ISAACS
Richmond

KENNETH BECKER
Wheeling, W. Va.

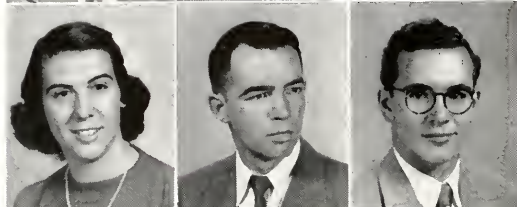




JACK BOND
Lexington

ROBERT K. BAUER
Louisville

BETTY MAYO
Paintsville



BARBARA COCANOUGH
Lebanon

DON MATTOX
Richmond

MORRIS N. WEBB
Stearns



ROBERT HUDDLESTON
Corbin

JOHN R. BEGLEY
Richmond

RHODA WINN
Irvine



ROBERT SPICER
Ft. Thomas

IMOGENE DANIELS
Pikeville

DONALD COMBS
Richmond



ANDREW WILSON
Oaks

RAYMOND TINGLE
LaGrange

ETHEL SCHELL
Louisville



BARBARA BURNETT
Stone

RAYMOND BRUCE
Louisville

ROBERT THOMPSON
Cumberland

ALEX KOLAKOWSKI
Ambridge, Pa.

DONOVAN REDFORD
Horse Cave

EVELYN PARKS RYMER
Louisville



STAN STANFORD
Norwood, Ohio

CHARLENE MEEKS
Corbin

DON BALES
Pikeville



LEAH ROSE BROWN
Gee

DON AUGSBACH
Bellevue

GGRMAN BRUCE
Richmond



VERNON CALHOUN
San Mateo, Fla.

HARRY LEE ELLIOTT
Dry Ridge

ELIZABETH PIERCE
Somerset



WOODWARD SAWYER
Burning Springs

MARIANNE AUXIER
Pikeville

LOWELL SPURLOCK
Manchester



JOYCE PURCELL
Mt. Vernon

DAVID BYERS
Monticello

JOHN DELANEY
Winchester

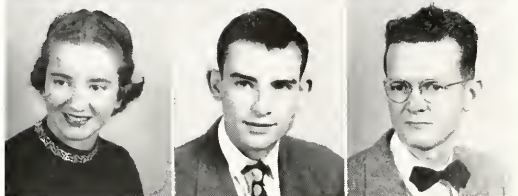




BRUCE GRAVETT
Winchester

BASIL E. SEALE
Ravenna

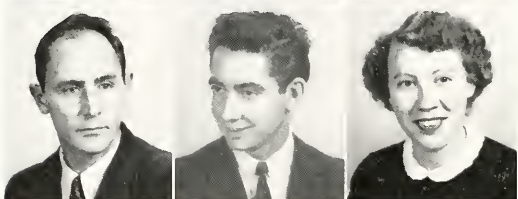
ANNA JEAN DURBIN
Witt



CHARLENE FARRIS
Springfield

ROY D. BURBERRY
Richmond

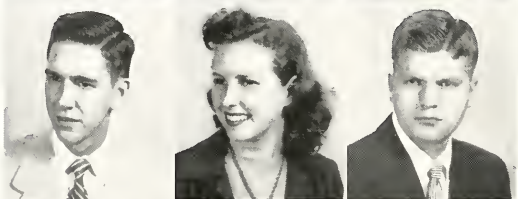
HIRAM SNOWDEN
Ravenna



LESTER WILLIAMS
Yosemite

JUNELLA ENGLE
Gatiff

EUGENE SAYLOR
Cumberland



NEVILLE SMITH
Sexton's Creek

BRUCE FRALEY
Wayland

HAVIS KIRBY
Richmond



MARY WILL HALL
Grayson

WARREN TARVIN
California

ROY RILEY
Buckhorn



CHARLES O'HEARN
Richmond

MARY HORAN
Louisville

CHARLES HAMMONDS
Kodak

SIDNEY SMITH
Wheelersburg, Ohio

ANDREW FRAZIER
Sunman, Ind.



MARGARET DYCHE
Corbin

BEVERLY ANN WHITE
Anchorage

COLUMBUS SEXTON
Whitesburg



JAMES HELTON
Rietown

LAWRENCE ROTH
Forest Hills, N. Y.

BETTY JOYCE SMITH
Closplint



ROBERT H. MASON
Booneville

HELEN PARKE
Richmond

DARREL WININGER
Corbin



HOBART WELLS
Boon's Camp

IRA LEO COLEMAN
Coleman

JOHN BOGGS
Lawrenceburg



GLENNA WITT
Wisemantown

LAVERN BROOKS
Campton







Sophomores





SOPHOMORE CLASS OFFICERS

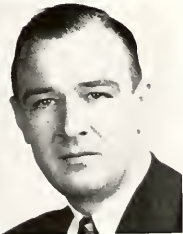
DONALD FIELDS ----- President

HUEY BROOKS ----- Vice-President

PEGGY HINTON ----- Secretary

NANCY HARRIS ----- Treasurer

MR. TOM SAMUELS ----- Sponsor





Column 1: Gary Russell, Liberty; Mary Ann Rankin, Danville; William Pickett, Carrollton; Jacqueline Johnson, Burdine.

Column 2: Eleanor June Prather, Versailles; Robert C. Buckley, Miami, Fla.; Ida Kathryn McDowell, Mt. Olivet; Bill McClanahan, Lexington.

Column 3: Ray Frankel, Bradley Beach, N. J.; Joan Neff, Louisville; Gordon Cook, Beattyville; Betty Beaman, Covington.

Column 4: Wilma Ginn, Paris; Carol Horton, Grayson; Betty Ann Crank, Kenvir; Donald D. Moore, Richmond.

Column 5: John Holbrook, Brodhead; Evelyn Philips, Harrodsburg; Jesse Lee Reed, Bowen; Joan Alice Hafer, Covington.

Column 6: Peggy June Baker, Ghent; Paul Haney, West Liberty; Elizabeth Ann Harris, Louisville; George McKinney, McKinney.

Column 7: James Odle, Portsmouth, O.; Connie Robinson, Danville; Paul R. Rolph, Maysville; Betty Lou Smith, Attica, Ind.



Column 1: Marjorie Ann Graden, Silver Grove; Ernest Wayne Pressley, Canton, N. C.; Mary Elizabeth Kearns, Paris; Edgar McNabb, Ft. Mitchell.

Column 2: William W. Barnes, Covington; Judith Saunders, Mt. Sterling; Hiram Smith, Clopslint; Pat Spoonamore, Stanford.

Column 3: Annette Jeter, Nicholasville; Bobby Montgomery, McKinney; Carolyn Camp, Richmond; Woolery Haynes, Cornettsville.

Column 4: Richard Staab, Ft. Mitchell; Joyce Noe, Cincinnati, O.; Don Marcum, Somerset; Kathleen Tiller, Dayton, O.

Column 5: Florence Tanner, Oberlin, O.; Milton Martenson, Barterville; Glenna Hays, Irvine; Lawrence Mitchell, Danville.

Column 6: Denzil Royce Elliott, West Liberty; Jennie Lee Chattin, Ashland; Hubert Mullins, Royalton; Charlotte Hume, Taylorsville.

Column 7: Dixie Carrington, Charters; Lowell Eugene Yeager, Bimble; Marion Elizabeth Cox, Richmond; Ruth Hulker, Frankfort.



Column 1: Joyce Goodrich, Richmond; Hubert Lovett, Evarts; Betsy Otis, Lexington; William Bradford, Ashland.

Column 2: Eagle Doty, Albany, Ga.; Elizabeth Clark, Sunman, Ind.; Chetter Bryant, Augusta; Patricia Ann Barker, Harlan.

Column 3: Irene Salyer, Paintsville; Ruy Jackson, Insull; Ann Trimble Hollis, Somerset; Roy Perkins, Danville.

Column 4: Eugene Davis, Pikeville; Jo Nell Harrod, Frankfort; Clyde White, Richmond; Doris Ann Horn, Seco.

Column 5: Hartese Hatter, Yosemite; James Bearden, Closplint; Blanche Raleigh, Altro; Hubert Baker, Booneville.

Column 6: Will Robert Fights, Liberty; Willette Sue Evans, Lancaster; Robert Keller, Mt. Sterling; Twila Simpson, Lawrenceburg.

Column 7: Nancy Harris, Harlan; Lewis Eldon Storms, Richmond; Elizabeth Ann Reed, Lily; Edmund Burke, Prestonsburg.



Column 1: Robert Mulcahy, Lexington; Norma Jean Lee, Tyner; Ben Turpin, Richmond; Joyce McBrayer, Raceland.

Column 2: Helen Rose Deaton, Saldee; Dave Burgett, Beverly; Grace Denny, Science Hill; Calvin Smith, Manchester.

Column 3: Lawrence Harris, Stanton; Olga Frances Preston, Allen; Ronald Finley, Louisville; Catherine McKee, Cynthiana.

Column 4: DeLois Jean Howard, Cincinnati, O.; Roosevelt Turner, Newport; Barbara Lee Greer, Ashland; Kenneth Snapp, Carlisle.

Column 5: William Hurst, Richmond; Peggy Hinton, Williamstown; Roy Kidd, Corbin; Sbirley Ann Owens, Brodhead.

Column 6: Archolene Caudill, Manchester; Clifton Moore, Cincinnati, O.; Jacquelyn Ritter, Richmond; Delbert Anderson, Bybee.

Column 7: Thomas Edward Romard, Eatontown, N. J.; Sophia Fields, Beattyville; William McAnallen, Winchester; Kathryn Keene, Richmond.



Column 1: Elliott Lea, Crestwood; Jayne Trivette, Virgie; Clay Witmer, Winchester; Jamie Parke, Richmond.

Column 2: Linda Lee Ledford, Louisville; Charles Miller, Frankfort; Emily Jane McCord, Richmond; Hank Romersa, Latrobe, Pa.

Column 3: Nick Tsangeos, Steubenville, O.; Mildred Towery, Conway; James Clyde Murphy, Kirksville; Bonnie Schram, Florence.

Column 4: Mary Lou Jones, Louisville; Donald Fields, Louisville; Martha Sue Young, Campbellsville; Marion White, Perryville.

Column 5: Douglas Gaither, Detroit, Mich.; Lena Denham, Vanceburg; Huey Brooks, Corbin; Jerry Williston, Hazard.

Column 6: Wanda Smyth, College Hill; Harold Warford, Richmond; Daisy French, Brutus; Martin Becker, Brooklyn, N. Y.

Column 7: Russell Ross, Cottonburg; Irene Davidson, Egypt; Henry Kline, Beelick; Betty Lee Maupin, Berea.



Column 1: Donald Lamb, Berea; Betty Bowman Gabbard, Vincent; Ray Stocker, Richmond; Phyllis Ann Back, Mt. Sterling.

Column 2: Jean Carol Linder, Covington; William Johnson, Falmouth; Angie Pratt, Gillmore; Paul Long, Wayland.

Column 3: Carroll Shaver, Canton, N. C.; Frances Brown, Clintonville; Harry Douglas Wilson, Tynes; Viola Vaught, Science Hill.

Column 4: Phyllis Ann Carter, Ashland; Elijah Ask, Red Bank, N. J.; Martha Jean Chambers, Richmond; Marion Tingle, Georgetown.

Column 5: Paul Bybee, Cincinnati, O.; Elizabeth Ann Caywood, Erlanger; Charles McClellan, Freeburn; Hazel Frances Yankey, Anchorage.

Column 6: Elizabeth Lowry, Covington; Rardolph Dozier, West Irvine; Betty Carson, Hazard; Urey Ballard, Irvine.

Column 7: Doug Hoffman, Red Bank, N. J.; Mary Cecile Horn, Corbin; Donald Little, Drift; Juanita Thompson, Louisville.



Column 1: Richard Dunn, Stanford; Marianna Stanford, Glomaw; Janie Thompson, Mt. Sterling; Jack Shell, Loyall.

Column 2: Marjorie Hall, Lebanon; Eldred Ray Roberson, Ashland; Hazel Arnold, Worthville; Gwen Jones, Louisville.

Column 3: Mary Claire Haynie, Richmond; Doris Sidwell, Albany; Paul Hager, East Point; Reeda Farney, Harrodsburg.

Column 4: Charles Hacker, Richmond; Wilma Quillen, Lothair; Doris Lynn Smith, Wooton; Claude Smith, Gray Hawk.

Column 5: Mildred Jackson, Covington; Jesse McKinley, Owensboro; Peggy Brummett, Wheelwright; Virginia Richardson, Owingsville.

Column 6: Patsy Knigga, Ghent; Laura Louise Antle, Lexington; James Caudill, Neon; Ruby Tarter, Windsor.

Column 7: James Leveridge, Hazard; Norma Jean Slusher, Pineville; Annette Engle, Gatliff; James E. Allen, Salyersville.



Column 1: Betty Carpenter, Flemingsburg; Eric Campbell, Krypton; Barbara Turner, Bromley; Mary Carol Boone, Stanford.

Column 2: Dorothy Ogden, Campbellsburg; Ruby Carnahan, Manchester; Ronald Curry, Wheelwright; Helen Keen, Dryhill.

Column 3: Elmer Stewart, Hindman; Ina Claire Anderson, Willow Run, Mich.; Eunice Arnett, Venay, Ind.; Bruce Bates, Harrodsburg.

Column 4: Sara Conn, Paintlick; Noland Baldwin, Hopkinsville; Barbara True, Frankfort; Olive Hieronymus, Richmond.

Column 5: Jane Rose, Richmond; Lizabeth Webb, Manchester; James Bingham, Pittsburgh, Penn.; Dotty Dell McPherson, Richmond.

Column 6: Stanton Young, Louisville; Delores Holbrook, Whitesburg; Eleanor Wilson, Richmond; Robert McIntosh Turner, Buchhorn.

Column 7: Josephine Dickerson, Livingston; Ann McLeaster, Lawrenceburg, Ind.; Harry Holder, Richmond; Mary Lou Rowe, New Albany, Ind.



Column 1: Vivian Wilson, Anchorage; Linda Fulkerson, Owensboro; Marie Sebastian, Richmond.

Column 2: Edna Pollard, Lancaster; Lorna Jean Wright, Seco; Roy Allison, Port Huron, Mich.

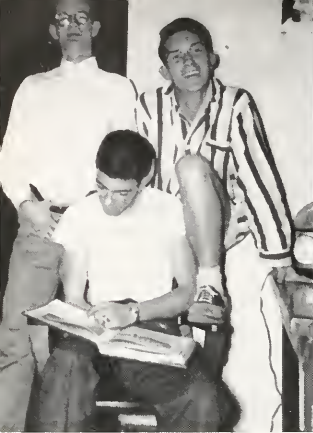
Column 3: Carl Williams, Lawrenceburg; Patsy Teater, Nicholasville; Sondra Burton, Ashland.

Column 4: Martha Galbraith, Maysville; Howard Coop, Hegira; Faye Kaufman, Louisville.

Column 5: Jeanie Stieren, Harlan; Suzanne Turner, Greensburg; Joe Valentour, Stearns.

Column 6: John Lillis, Richmond; Frances Rogers, Richmond; Mary Lou Schirmer, Ghent.

Column 7: Margaret McDonald, Henderson; James Smith, Somerset.





Freshmen





FRESHMAN CLASS OFFICERS

GENE JONES President

BILL HENSLEY Vice-President

ANN GORDON Secretary

DON DALY Treasurer

MRS. EMMA Y. CASE Sponsor





Column 1: Mary Anne Mason, Millersburg; Bobby Disponett, Lawrenceburg; Elisabeth Sutton, Bryantsville; Harold Fraley, Green; Martha Leeds, Richmond.

Column 2: Clarence Melton, Manchester; Doris Marcum, Lynch; Charles Stallard, Neon; Doris Ernst, Louisville; Karrol Switzer, Cynthiana.

Column 3: Janice Nadine Burton, West Liberty; Roger Stephens, Gapville; Florence Bunch, Winchester; James Lane, Richmond; Joe Ann Goins, Berea.

Column 4: Lowell Sallee, Richmond; Ethel Guy, Nicholasville; Chester Greynolds, Loyall; Dona Heil, Ft. Thomas; Don Jett, Richmond.

Column 5: Ruby Holbrook, Pine Ridge; James Scrivner, Irvine; Barbara Faulkner, Richmond; Merrell Patrick, Cynthiana; Nancy Rickey, Cincinnati, O.

Column 6: Eugene Jones, Ironton, O.; Pauline Coyle, Richmond; Bobby Glen Gibbs, Lothair; Dorothy McPhail, Hazard; Buddy Cury, Neon.

Column 7: Threesa Hamon, Danville; Milton Marcum, Salyersville; Barbara Jo Hill, Atlanta, Ga.; Herbert Nidiffer, Tribbey; Dean Rubarts, Dunville.



Column 1: Karl Bays, Corbin; Denyse Campbell, Maysville; Kenneth Durham, Richmond; Jane Gregory, Hazard; Don Daly, Covington.

Column 2: Ann Carol Elder, Richmond; J. W. Gilliam, Livingston; Betty White Rush, Richmond; Everett Bickers, Campbellsburg; Naomi Sue Hamm, Nicholasville.

Column 3: E. M. Combs, Harlan; Emma Lou Asbury, Kenvir; James Moore, Winchester; Lois Jo Hamblin, Buckhorn; Roger Ladenburger, Maysville.

Column 4: Donna Lowry, Ashland; Billy Holcomb, Levi; Barbara Ballou, Richmond; Franklin Elliston, Middlesboro; Peggy Shackelford, Parksville.

Column 5: Irvin Clyde Combs, Orkney; Billie L. Davis, Richmond; John Doughty, Crab Orchard; Bonnie Fairchild, Salyersville; David Caylor, New Albany, Ind.

Column 6: Joyce Philpot, Corbin; Albert Haggard, Winchester; Naomi Davis, Beattyville; James Cromer, Corbin; Mary Maffey, Petersburg.

Column 7: Harold LeQuire, Harlan; Doris Ann Hicks, Sardis; Hunter Foster, Nashville, Tenn.; Lavern Stephens, Jabez; Claude Hubbard, Stoney Fork.



Column 1: Edwin Boone, Winchester; Betty Walden, Vanceburg; John Skidmore, Caywood; Dale Marie Woodson, Winchester; Jack Kelly, Evarts.

Column 2: Sophie Juliane Wiedekamp, Ashland; Robert Jewell, Valley Station; Jon Liddell Becker, Butler; Ronnie Johnson, Stoney Fork; Alice Reynolds, Nicholasville.

Column 3: Bobby Rose, Winston; Ruth Mary Pullon, Cincinnati, O.; N. Edwin Cuff, Richmond; Helen B. McGowan, Jabez; Jack Dingus, Martin.

Column 4: Thelma Jean Parke, Richmond; Kendall White, Green; Anne Shouse, Gordon, Shelbyville; Douglas Gary Gibbard, Covington; Carolyn Schoolcraft, Cains Store.

Column 5: Wayne Tipton, Richmond; Mary Lou Hopper, Vine; William Hensley, Harlan; Lenore Miracle, Artemus; Oris Glen Johnson, Vallonia, Ind.

Column 6: Betty Ogden, Winchester; Paul Wireman, Royalton; Margaret Broughton, Irvine; Leslie Gene Purdom, Gravel Switch; Polly Lou Jenkins, Whitesburg.

Column 7: James Green, Cleveland, Okla.; Dorothy Thomas, Paris; James Collins, Glowmar; Anne Hammons, Stanford; Donald Pennington, Winchester.



Column 1: William Howard, Wallins Creek; Sylvia Ritter, Richmond; Dannie Deren Grant, Insull; Nancy Lee Guenther, Southgate; Roy H. Cochran, Corbin.

Column 2: Peggy Kraus, Louisville; Steele Dudley, Winchester; Della Lorraine Hamilton, Falmouth; Shannon D. Hatter, Yosemite; Grace Reynolds, Buckhorn.

Column 3: Billy Harris, Lancaster; Barbara Lineks, East Bernstadt; Jimmy White, Manchester; Paula Owens, Loyall; Harry Smiley, Berry.

Column 4: Martha Applegate, Tollesboro; William Palahunich, McKees Rock, Pa.; Edith Ann Taylor, Covington; William Hugh Baldwin, Valley View; Norma Faye Simms, Waynesburg.

Column 5: Robert Roby, Shepherdsville; Marlene Young, London; Bobby Dezarn, College Hill; Betty Louise Gullady, Winchester; Leon Ball, Harlan.

Column 6: Lillie Mae Reed, Ravenna; Pat Dale, Mt. Sterling; Tommy Jean Lemaster, Salyersville; George Demetre, Newport; Chloe Jean Slusher, Warbranch.

Column 7: Charles Correll, Somerset; Dale Rice, Richmond; Chester Raker, Carrollton; Dorothy Crady, Louisville; Gary Reid Hall, Shelbyana.



Column 1: Lois Jean Pyatt, Florence; Thomas Sammons, Raceland; Phyllis Ann Hickman, Virgie; Ben Southers, Ashland; Helen Pearson, Richmond.

Column 2: James W. Humphrey, Georgetown; Mary Alice Cartmill, Mt. Sterling; Harold Saylor, London; Sue Ann Hodges, Alva; William Carol Doan, Cynthiaana.

Column 3: Sue Goble, Prestonsburg; Grover F. Fannin, Index; Shelby Frances Wilburn, Grayson; Roy Branham, Wheelwright; Joann Blakely, Louisville.

Column 4: Robert B. Wylie, Lexington; Peggy Smith, Dukers Station; George Paul Hogan, Babylon, N. Y.; Allie Jean Turner, Shelbyville; Dudley Whitaker, Royalton.

Column 5: Marty LeFevers, Kettle Island; Rudy Bicknell, Panola; Joan Bowman, Nicholasville; Stewart Whitaker, Carcassonne; Alva Marie Fraley, Ashland.

Column 6: Charles Lee Martin, Corbin; Clema Lee Mullins, Eubank; William R. Harding, Winchester; Betty Jane Rhinesmith, Paris; Robert Metcalf, Lancaster.

Column 7: Wanda Lee Kincer, Mayking; Howard Haney, Somerset; Betty Jo Walters, Corbin; John L. Simpson, Crab Orchard; Laura Elizabeth Todd, Richmond.



Column 1: Ann Phelps, Lexington; LeMayne Dingus, Martin; Mavis Sandlin, Anchorage; Humphrey Elliott, Liberty; Ruby Faye Tipton, Richmond.

Column 2: Jerry Wright, Falmouth; Gayleen Sells, Louisville; Nick DeSantis, Asbury Park, N. J.; Mary Jane Fields, Richmond; Glover Spencer, Martin.

Column 3: Marjorie Sagester, Anchorage; Mathias Williams, Path Fork; Gayle Marshall, Louisville; David Fannin, Little Sandy; Virginia Durbin, Lexington.

Column 4: Roger Smith, Columbus, O.; Marianne Durrett, Danville; Carlyle Watson, Louisville; Mary Frances Campbell, Mt. Sterling; Charlie Truc, Covington.

Column 5: Alice M. Salisbury, Wayland; David Thornton, Lexington; Rhoda Ann Sparks, Sextons Creek; Robert M. Little, Mt. Sterling; Sue Carroll Lewis, East Bernstadt.

Column 6: Walter H. Park, Richmond; Georgia Anna Williams, Harlan; Clarence Miller, West Irvine; Laura Lou Rogers, Maysville; Ben Trail, Wallins.

Column 7: Janice Treadway, Barbourville; Harold Johnson, Pikeville; Jane Faulkner Parker, Somerset; Marvin McDonald, Waco; Eudell Dunaway, Irvine.



Column 1: Jack Holland, London; Edwin Dale, Louisville; Robert Muller, Amityville, N. Y.; Jimmie Snyder, Corbin; Ronald Smiley, Prestonsburg.

Column 2: Phyllis Piper, Covington; James Bureh, Stamping Ground; Wanda Matthews, Cynthia; Gene Tompkins, Corbin; Margaret Bolin, Barbourville.

Column 3: David Riggs, Duff, Tenn.; Anita Ann Lankford, Lebanon; Ernie Rigrish, Portsmouth, O.; Billie Ballard, Richmond; James Ford, Somerset.

Column 4: Janice Halliday, Louisville; Louise Sparrow, Sinai; Nancie Lee Stone, Grayson; Phyllis Williamson, Pinson Fork; Emily Bell, Lancaster.

Column 5: John Seale, Booneville; Dicie Jane Bowman, S-oville; Edgar Hardin, Noctor; Peggy Ann Chandler, Louisville; Paul Clayton, North Middletown.

Column 6: Barbara Arnett, Paintsville; Clifton Taylor, Danville; Delores Daniel, Ashland; Ralph Perry, Lawrenceburg; Waverly Berry, Warsaw, Ind.

Column 7: Clyde Mullins, Middlesboro; Clarence Noland, Richmond; Delbert McCowan, Richmond; Wade Brock, Manchester; Ernest Durham, Richmond.



Column 1: Harry Stigall, Danville; Charles Arrington, Louisville; Wanna Faye Brown, Mt. Sterling; William Ball, Pineville; James R. Winn, Leitchfield.

Column 2: Logan Adams, Cutshin; Paul Collins, Mayslick; James Brooks, Corbin; Mary Ann Johnson, Danville; William Hornsby, Burning Springs.

Column 3: Kathleen Albright, Brodhead; Jimmy Caudill, West Liberty; James Floyd, Carrollton; Robert E. Jones, Coalgood; Bianche Viall, Barbourville.

Column 4: Edward Browning, Cawood; Jimmie Sue Bateman, Barbourville; James Carroll, Louisville; Walter Russell, Danville; Roger Howard, Insull.

Column 5: Paul Greene, Ashland; Pat Bell, Pine Knot; Peggy Cox, Corbin; Preston H. Hall, Delphia; West Spain, Rocky Mount, N. C.

Column 6: Glenn Brown, Yeager; Jesse Keltner, Somerset; James Allender, Fairmouth; Betty Magruder, Jeffersonville, Ind.; Asa Louis Hord, Berea.

Column 7: Nita Kay Christy, Cincinnati, O.; Ralph Ballard, Burgin; Harold Roof, Betsy Layne; Charles A. Hubbard, Richmond; Fannie Lee Newby, Richmond.



Column 1: Mary Lee Deal, Wheelwright; William Royalty, Irvine; Violet Deane Barnott, Weeksburg; Donald Utley, Henderson; Peggy Anderson, Stanford.

Column 2: Walker M. Parke, Richmond; Eva Ruth Haden, Richmond; Robert Likins, Maysville, Norma Jean Tevis, Richmond; James Baker, Ashland.

Column 3: Ruth M. Black, Richmond; James Marvin Day, Loyall; Mary Joan Cruce, Marion; Gerald Owens, Maysville; Marteen Parsons, Kettle Island.

Column 4: Thomas Howell, Loyall; Charlotte Harris, Big Laurel; Jonas P. Shugars, Liberty; Norma Lee Peters, Erlanger; Billy Foster Adams, Lancaster.

Column 5: Joan Scholle, Covington; William L. Reed, Salyersville; Lenora F. Harrison, Fort Gay, W. Va.; David R. Hereford, Prestonsburg; Beverly Wilson, Richmond.

Column 6: John P. Lay, Stanford; Cynthia Jones, Somerset; Frederick Paul Kidd, Barboursville; Audrey Covington, LaGrange; Holly H. Chilton, Harrodsburg.

Column 7: Dixie Trapp, Butler; Lee Roy Morehouse, Cranston; Lula Catherine Brooks, Berea; Ralph Rutledge, Ironton, O.; Wilma Jean Wagel, Brooksville.



BURLEY B. STEVENS
Cattlettsburg



LORAINe MCGLONE
Lexington





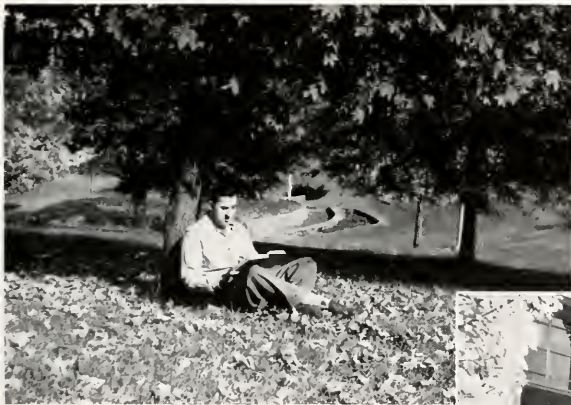
Activities





CAMPUS







REGISTERING

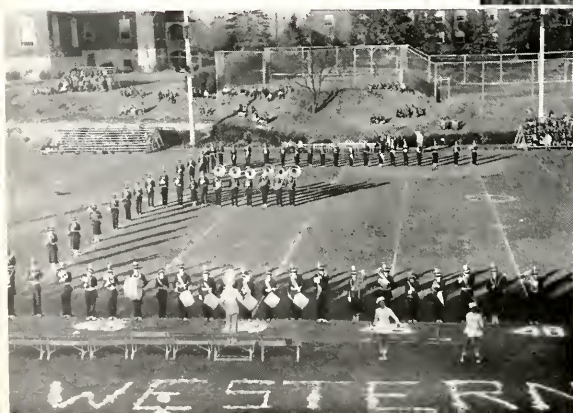




**A BITE
TO EAT**



HOMECOMING







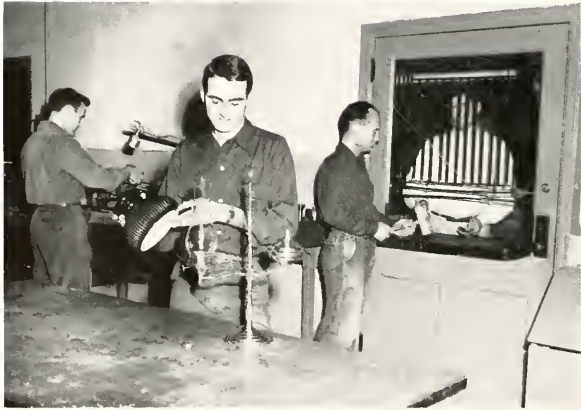
ATHLETIC SIDELIGHTS





CLASSES









RECREATION







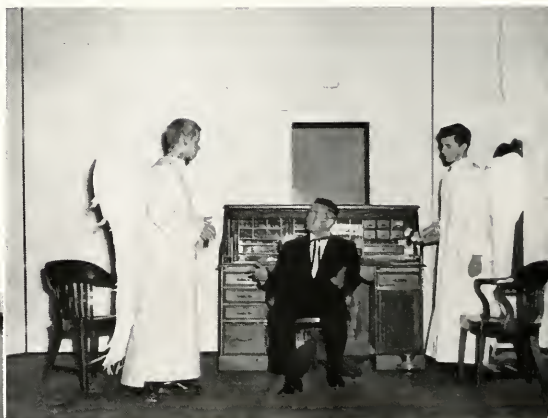
DANCES







CULTURE







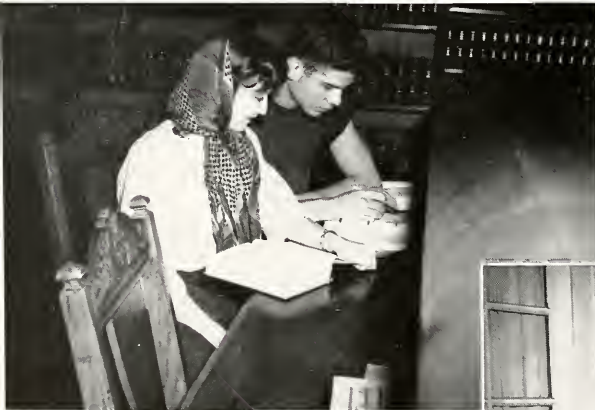
**DORM
LIFE**







ROMANCE





Athletics

52



Eastern's athletic teams, an important part of the college's well-rounded program of extracurricular activities for students, rank among the best in the nation year after year. With football and basketball ranked as "major sports," baseball and track continue to gain in popularity here.

On any field of play, Maroon squads are highly regarded for fine team play by athletes well-schooled in fundamentals. Despite the exciting moments of many a close contest, Eastern's teams are known for good sportsmanship and fair play.

All these factors make for better citizens and better teachers for the youth of our state and nation. In games with neighboring rivals and intersectional foes, the Maroons play to win while remembering "the spirit as well as the score is important."



CHARLES T. HUGHES

Director of Athletics

Now baseball coach. "Turkey" has also coached football and basketball during his 23 years at Eastern. He was a four letterman at U. K. and played professional baseball before coming to Eastern.



PAUL DUNCAN

*Assistant to the
Director of Athletics*

"P. D.", an Eastern graduate, is in charge of athletic publicity. He gained his journalistic experience in the Army and at Columbia University.

FOOTBALL COACHING STAFF



GLENN PRESNELL

Backfield Coach

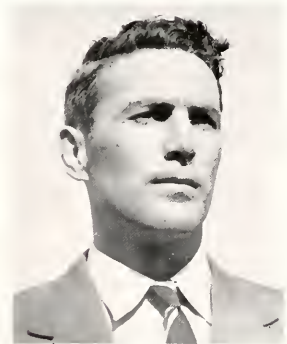
Former All-American at the University of Nebraska.



TOM SAMUELS

Head Football Coach

Coach Samuels has completed his fifth season as head coach here. He was named an All-Big Ten tackle at the University of Michigan before he became line coach at Eastern.



FRED DARLING

Line Coach

Former All-K. I. A. C. and Little All-American for the Eastern Maroons.

EASTERN FOOTBALL TEAM



First row: White, Jones, George, Daly, Southers, Rigrish, Bond, Tsangeos, Leone, Greene, Kidd, Miracle.

Second row: Pavlovich, Green, Shockley, Dudding, Hertzler, Gibbs, Gracey, Herron, Dorman, Rodgers, Robertson, Eagle, Faust, Lewallen.

Third row: Backfield Coach Glenn Presnell, Head Coach Tom Samuels, Mullins, Galleher, True, Sammons, Johns, Adams, Bays, Mason, Kolakowski, Schmitt, Lambert, Palahunich, Line Coach Fred Darling.

Fourth row: Muller, North, Spain, Arthur, Hortman, Williams, Dozier, Perkins, Wilson, Rice, Hanlon, Oakley.

1951-1952 FOOTBALL SEASON RECORD

Eastern.....	31	Hillsdale	12
Eastern.....	13	Marshall	6
Eastern.....	0	Murray	9
Eastern.....	15	Tennessee Tech...	14
Eastern.....	58	Erskine	0
Eastern.....	6	Morehead	0
Eastern.....	6	Evansville	7
Eastern.....	31	Western	7
Eastern.....	27	Ohio U.	13
Eastern.....	14	Stetson	26

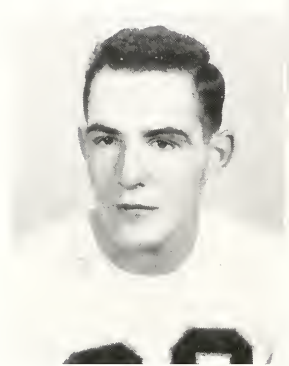
Won 7, Lost 3

ROSTER OF LETTERMEN

NAME	POSITION	Ht.	Wt.	CLASS	HOME TOWN
Adams, Bill	Center	6' 2"	205	Junior	Lexington, Ky.
Bond, Jack	Halfback	5' 10"	164	Junior	Lexington, Ky.
Bradford, Bill	Fullback	5' 11"	180	Freshman	Ashland, Ky.
Daly, Don	Halfback	5' 10"	173	Freshman	Covington, Ky.
Dorman, John	Center	5' 11"	210	Senior	Covington, Ky.
Dudding, Jim	End	5' 11"	170	Senior	Ironton, O.
Faust, Bob	Tackle	6' 2"	203	Senior	Ft. Thomas, Ky.
George, Billy	Halfback	5' 10"	170	Junior	Dayton, Ky.
Gibbs, Brian	End	5' 10"	185	Senior	Crooksville, O.
Gracey, Howard	End	6' 2"	180	Senior	Coraopolis, Pa.
Green, Walter	Guard	5' 9"	174	Senior	Portsmouth, O.
Greene, Paul	Halfback	5' 10"	165	Sophomore	Ashland, Ky.
Hanlon, Jim	Quarterback	6'	160	Freshman	Ghent, Ky.
Herron, Ross	Fullback	5' 10"	185	Senior	Covington, Ky.
Hertzner, Chuck	Fullback	5' 10"	204	Senior	Coraopolis, Pa.
Johns, Jerry	Guard	6'	190	Sophomore	Dayton, O.
Kidd, Roy	Quarterback	5' 9"	165	Sophomore	Corbin, Ky.
Mason, Fred	Guard	6'	190	Freshman	Harlan, Ky.
McNabb, Edgar	Student Mgr.			Sophomore	Ft. Mitchell, Ky.
Miracle, Ed	Halfback	5' 9"	160	Freshman	Middlesboro, Ky.
Muller, Bob	Fullback	5' 11"	191	Freshman	Amityville, N. Y.
North, Larry	Quarterback	6' 2"	187	Sophomore	Ambridge, Pa.
Oakley, Carl	Guard	6'	190	Freshman	Corbin, Ky.
Pavlovich, George	End	6'	187	Senior	McKees Rocks, Pa.
Robertson, Bob	Fullback	6' 2"	200	Senior	Gary, Ind.
Rodgers, Dave	Guard	5' 10"	190	Senior	Loyall, Ky.
Schmitt, Charles	Tackle	5' 11"	212	Junior	Wheaton, Ill.
Shockley, Bob	Tackle	6' 4"	205	Senior	Falls Church, Va.
True, Charles	End	5' 11"	185	Freshman	Covington, Ky.
Tsangeos, Nick	Halfback	5' 9"	168	Sophomore	Steubenville, O.
White, Carl	Quarterback	5' 11"	180	Junior	Ironton, O.
Wilson, Dick	Tackle	6' 3"	215	Junior	Crooksville, O.

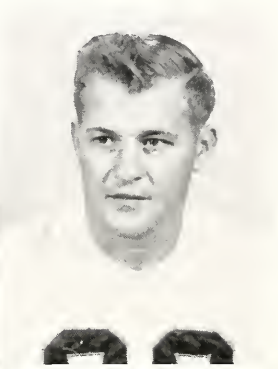
ALL-O. V. C.

Four of Eastern's gridders were named to the All-O. V. C. team by a vote of the coaches of the conference. Chuck Hertzler, fullback, was named to the first team. Brian Gibbs, end, Dave Rodgers, guard, and Bill Adams, center, were named to the second team.



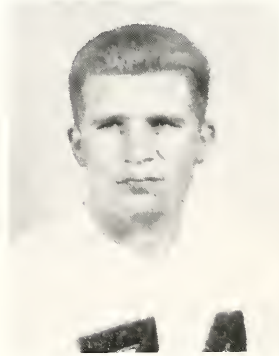
BRIAN GIBBS

Senior



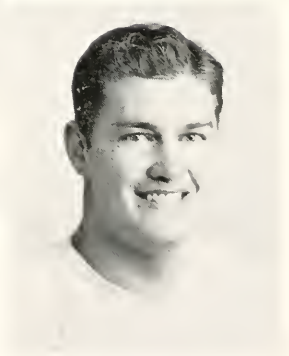
CHUCK HERTZLER

Senior



DAVE RODGERS

Senior



BILL ADAMS

Junior



GRADUATING SENIORS



Carl Eagle

John Dorman

Bob Faust

Ross Herron

FOOTBALL SEASON'S RESUME

The Maroon gridders of 1951 were one lone point away from the OVC championship. The 7-6 upset loss in zero weather at Evansville deprived the squad of a tie with Murray. Eastern wound up with a 4 win and 2 loss record while Murray won 5 of 6 loop battles.

In the loss at Evansville, Eastern had two touchdowns called back by penalties in the closing minutes of play. That's how near the Maroons came to being champions. Their season record was 7 triumphs in 10 tussles.

Coach Tom Samuels' crew, featuring a flock of freshmen and 13 seniors, got off to a fine start in drubbing Hillsdale College of Michigan 31-12 in the home opener. A strong Marshall eleven was the next victim by a 13-6 count.

In the big game at Murray, the Breds won a 9-0 battle, capitalizing on two Maroon fumbles and a pair of heart-breaking penalties. Murray's win came as a result of stopping Eastern's passing attack.

Tennessee Tech was stopped the following week in a 15-14 thriller at Cookeville. Returning to Hanger Stadium, the varsity had a field day in romping over Erskine 58-0. Next to fall was Morehead—and the old hawg rifle was here to stay for at least another year. A sensational 94 yard run by frosh Don Daly gave the Maroons their 6-0 victory margin.

Then came the 7-6 setback at Evansville. However, the gridders rebounded after this battle to post two big triumphs. In whipping the arch rival Western Hilltoppers 31-7 here at homecoming, the Maroons overcame a 7-0 halftime disadvantage. Ohio University was a heavy favorite to win at Athens, Ohio, but Eastern pounded out a 27-13 upset over the Ohioans. Stars of this fray were frosh quarterback Jim Hanlon and passers Chuck Hertzler, Roy Kidd and Bill George.

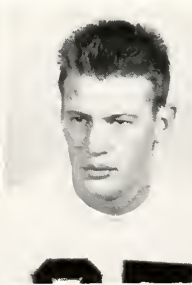
The finale was somewhat of a damp note to an otherwise fine season. The long jaunt to Deland, Florida, affected the Maroons and they bowed out 26-14 to Stetson University.

GRADUATING SENIORS

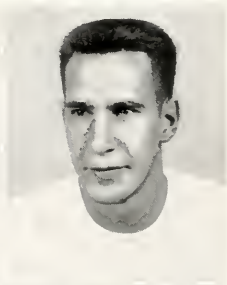
Jim Dudding



Bob Shockley



Howard Gracey



George Pavlovich



Walter Green



Bob Robertson



BASKETBALL COACHING STAFF



PAUL McBRAYER

Head Coach

BASKETBALL COACHING STAFF

In Paul McBrayer, Eastern has one of the best basketball coaches in the nation. McBrayer, who is called "the big Irishman" by his many Eastern fans, rates as one of the most popular coaches in the South and is frequently mentioned in national basketball circles as a great coach who schedules the toughest teams he can find.

The Maroon mentor plans a "usual" campaign for the Maroons next season. That means Eastern will challenge any national power that is interested. "We will continue to schedule the highest caliber of competition available," says Coach McBrayer.

In six seasons here, "the big Irishman" has coached his teams to 102 victories in

143 games with many outstanding teams in the country. That record gives him a winning average of 71 per cent. Considering the caliber of the competition, it is an excellent over-all record for the Maroons. The past season marked McBrayer's 22nd year of coaching basketball.

Aiding the chief Mentor this year were two students who formerly starred as Maroons, Joe Harper and Karl Kepler. "Jumping Joe" spent a lot of time grooming the frosh cagers. Kepler graduated in January.



JOE HARPER
Assistant Coach



KARL KEPLER
Assistant Coach

EASTERN BASKETBALL TEAM



Left to right: Holbrook, Culbertson, Mulcahy, Davis, Tolson, Stanford, Coach Paul McBrayer, Bingham, Stevens, Baechtold, Bales, Kearns, Geyer.

The 1951-52 basketball edition of the Maroons took on the toughest schedule in the history of the college. Eastern's fine showing in compiling a record of 13 victories in 24 games with many of America's best earned the team a ranking among the top 25 collegiate squads in the nation.

The schedule included eleven games with teams that took part in major tournaments at the close of the regular season. In fact, the charges of Coach Paul McBrayer challenged five of these on one road stand. The "old injury jinx" hit the Maroons early in January and plagued them for the remainder of the season. The lineup underwent constant revision as a result of the injuries.

The Maroons won 10 of 12 OVC games but were edged out by the Western Hilltoppers for the championship.

1951-52 BASKETBALL RECORD

Eastern.....	85	Xavier	54	Eastern.....	52	Seton Hall	69
Eastern.....	71	Evansville	45	Eastern.....	73	Dayton	90
Eastern.....	95	Virginia Tech	43	Eastern.....	63	Western	69
Eastern.....	78	Marshall	73	Eastern.....	65	Murray	79
Eastern.....	70	Louisville	72	Eastern.....	86	Morehead	79
Eastern.....	58	North Carolina State.....	70	Eastern.....	73	Louisville	78
Eastern.....	86	Evansville	66	Eastern.....	121	Tampa	69
Eastern.....	50	Toledo	59	Eastern.....	63	Tennessee Tech	52
Eastern.....	97	Morehead	60	Eastern.....	73	Western	62
Eastern.....	84	Murray	65	Eastern.....	59	Dayton	60
Eastern.....	86	Tennessee Tech	60	Eastern.....	77	Marshall	68
Eastern.....	56	LaSalle	77	Eastern.....	59	Murray	68



JIM BAECHTOLD
One of Eastern's greats

ALL-O.V.C.

"Jim Baechtold is the best all-around player I have seen in my 22 years of coaching" is Coach Paul McBrayer's tribute to Eastern's great "big cat." Baechtold, a hard driving 6-4, 200 pounder from the hills of western Pennsylvania, is a good student, a clean sport and an athlete well liked by his fellow students. Jim came to the campus as an unheard of basketball prospect in the fall of 1948. In three months, "gentleman Jim" had worked his way into a starting berth. From that time on, Eastern had the services of Baechtold, a good shot, tough rebounder and fine defensive player. The past season he scored 442 points in 23 contests, averaging 19.2 points per game.

The honors bestowed on Baechtold have been numerous. In the past four seasons he has been named to dozens of "all-opponent teams." He was named "most valuable" by his team mates. And this spring he was officially selected "Mr. Popularity" by the student body. He was one of the leading vote-getters in making the All-OVC Tourney teams the past two seasons. In national circles, he was named to the All America honorable mention list by the United Press.



Dick Culbertson



Shirley Kearns



Bill Bales

SOME OTHER MAROON STARS

Elmer Tolson



Bob Mulcahy



Roger Geyer



FRESHMAN BASKETBALL TEAM

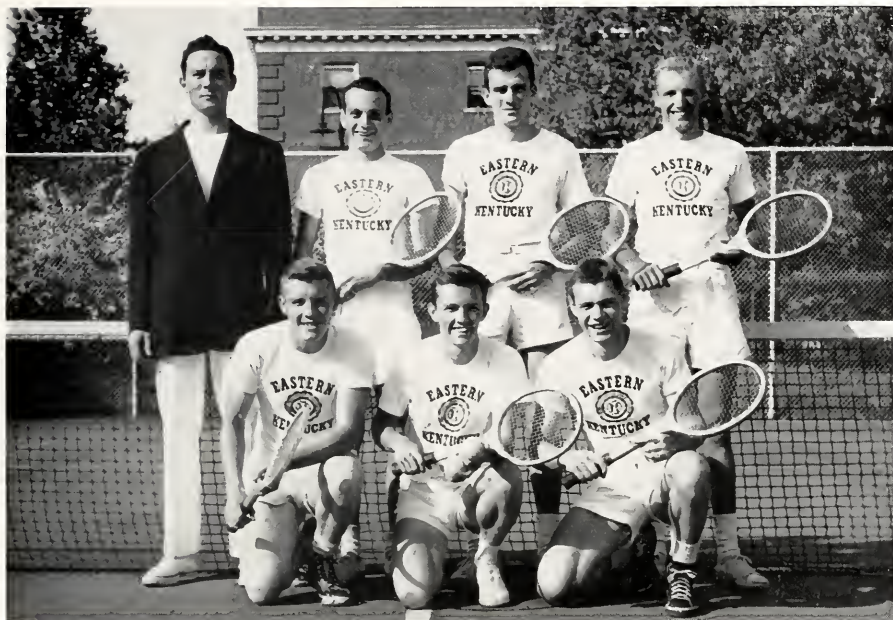


First row: Bob Disponett, Mike Short, Roger Smith, Paul Collins.

Second row: Assistant Coach Karl Kepler, Steele Dudley, Jim Floyd, Harold Fraley,
Assistant Coach Joe Harper.

In a limited schedule of three games the freshmen are undefeated.

TENNIS TEAM



First row: Jim Cunningham, Ray Feld, George Perry.

Second row: Coach Bob Gaines, Karl Jones, Paul Trieschman, Don Augsback.

Eastern won its first OVC tennis championship at the 1951 league meet at Cookeville, Tenn. The tennis team wound up its season with a record of nine wins and two losses.

TRACK TEAM



First row: Ray Lindenfelser, Jack Bond, Don Augsback, Jim Dudding, Clay Moore, John Jones, Neal Snead, Coach Fred Darling.

Second row: Jim Bingham, Lucian Strevels, Harold Warford, Bill George, Jim Hanlon, Gordon Fleck, Don Akin.

Third row: Student manager Tommy Smith, Francis Rothwell, Archie Ware, Don Little, Joe Harper.

Fourth row: Bob Shockley, Bill Adams, Chuck Schmitt.

Eastern's track team closed its regular season undefeated in six consecutive meets. In the OVC track meet at Cookeville, Tenn., they placed third. The year's outstanding performance was given by Jack Jones who broke the conference records for both the high and low hurdles.

BASEBALL TEAM



First row: Ron Finley, Rudy Bicknell, James Odle, John Delaney, Roy Kidd.

Second row: Brian Gibbs, Bob Abney, Carl Eagle, Stan Doddridge, Ed Lewicki, Chuck Hertzler, Howard Gracey, Coach Charles T. Hughes.

Third row: Chetter Bryant, Tommy Ward, Marion White, Bill George, Tom McAnalien, Joe Smith, student manager Ed McNabb.

Eastern's baseball team took second place in the race for the OVC championship. After beating Marshall to win the Eastern Division, they were defeated in the playoffs by Western.

GIRLS' HOCKEY TEAM



Row 1: Billie Ballard, Bevely Wilson, Elvira Short, Laura Ellis, Sondra Burton.

Row 2: Dot McPhail, Lavern Stephens, Marilyn Walker, Virginia Richardson.

Row 3: Beth Schwertman, Dona Heil.

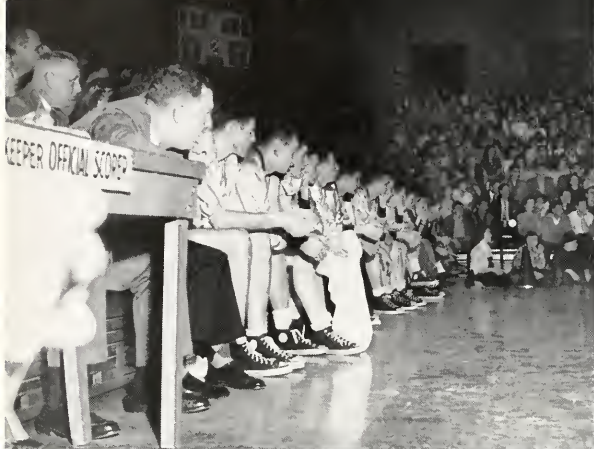
Row 4: Martha Williams.

GIRLS' BASKETBALL TEAM



Row 1: Beth Schwertman, Virginia Richardson, Beverly Wilson, Laura Ellis, Sondra Burton, Margaret Bolin, Dot McPhail.

Row 2: Martha Williams, Marillyn Walker, Elvira Short, Ann Phelps, Miss Charlotte Watson, Lavern Stephens, Billie Ballard, Dona Heil.





Military Science

52



DELANEY, ELLIOTT, FLANARY, BOND

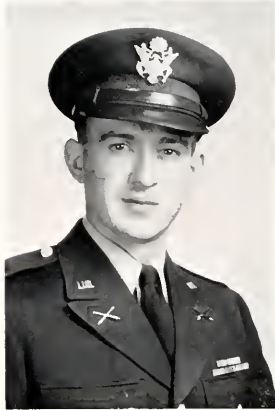
COLOR GUARD

ARMY STAFF



Colonel Stuart L. Cowles
P M S & T

Colonel Cowles is a graduate of The Field Artillery School, The Command and General Staff College, The Armed Forces Staff College and of The United States Military Academy. During World War II he served in the Artillery Sections of the Sixth and Tenth Armies in the Pacific and as Commanding Officer of the 420th Field Artillery Group on Okinawa.



Lt. Colonel David M. Easterday
Assistant P M S & T

Lt. Colonel Easterday is a graduate of The Field Artillery School, Fort Sill, Okla., and The Agriculture College, Ohio State University. He served with the Field Artillery in France and Germany and with the Military Government in the Army of Occupation in Germany.



Major Robert J. McDonough
Assistant P M S & T

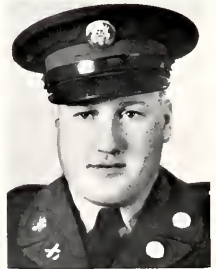
Major McDonough is a graduate of The Officers Advance Course, Fort Sill, Okla., and of The University of Notre Dame. He served as Naval Gunfire Spotter in the European and Pacific theaters during World War II and in the Army of Occupation in Germany and Australia.



William B. Hammond
Master Sergeant



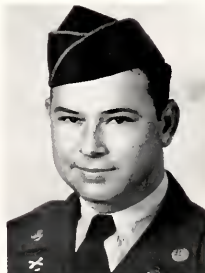
Sheldon Coffman
Sergeant First Class



Orville E. Scull
Sergeant First Class

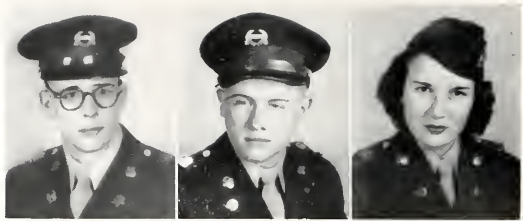


Bayliss E. Patterson
Sergeant First Class

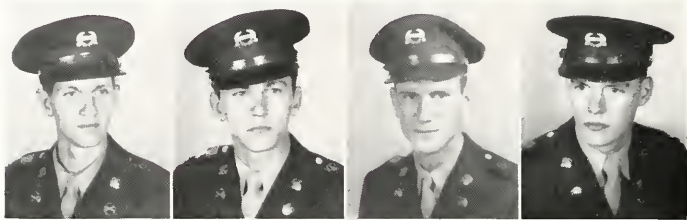


Reuben L. Ritter
Sergeant

CORPS STAFF



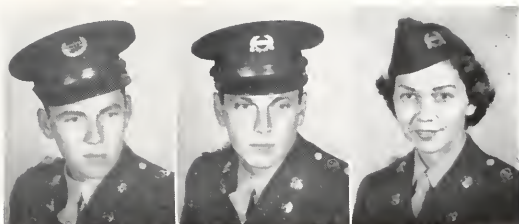
Cadet Lieut. Colonel George H. Hembree
 Cadet Major Coleman B. Witt
 Shirley Spires
 Cadet Corps Comdr. Cadet Corps Exec. Cadet Corps Sponsor



Cadet Major William H. Park
 Cadet Captain Carlos Singleton
 Cadet Captain Guy Strong
 Cadet Captain John B. Noland
 Cadet Corps S-3 Cadet Corps Adjt. Cadet Corps S-2 Cadet Corps S-4



FIRST BATTALION STAFF



Cadet Major
Clarence Heiss
1st Battalion Comdr.

Cadet Captain
Karl W. Jones
1st Battalion Exec.

Billye Jean Engle
1st Battalion Sponsor



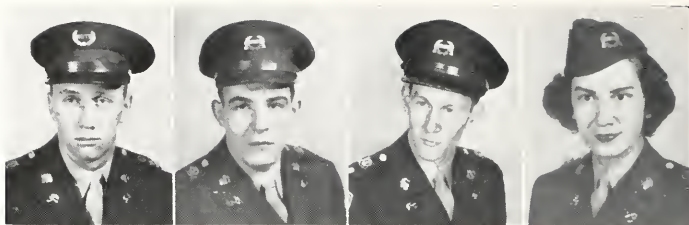
Cadet 1st Lieut.
Virgil W. Cook
1st Battalion Adjt.

Cadet 1st Lieut.
Joseph L. Rich
1st Battalion S-3

Cadet 2nd Lieut.
Bobby E. Jones
1st Battalion S-2

Cadet 2nd Lieut.
Robert K. Wiggins
1st Battalion S-4





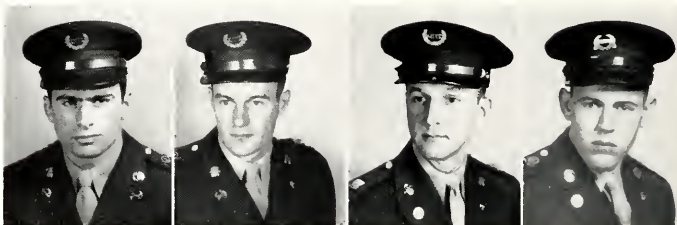
BATTERY A

Cadet Captain
Roger D. Geyer
Battery Commander

Cadet 1st Lieut.
Brian A. Gibbs
Battery Executive

Cadet 2nd Lieut.
George B. Norton
Asst. Battery Exec.

Jimmie Sue Bateman
Battery Sponsor



Cadet 2nd Lieut.
Alex Kolakowski
Platoon Leader

Cadet 2nd Lieut.
Elmo Martin
Platoon Leader

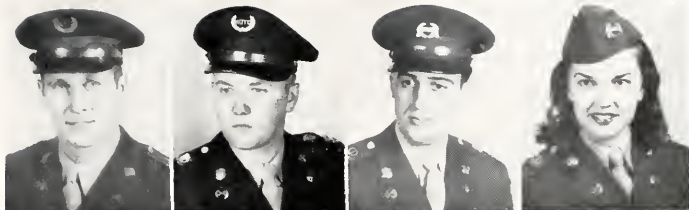
Cadet 2nd Lieut.
Kenneth I. Becker
Asst. Platoon Leader

Cadet 2nd Lieut.
William R. Burke
Asst. Platoon Leader

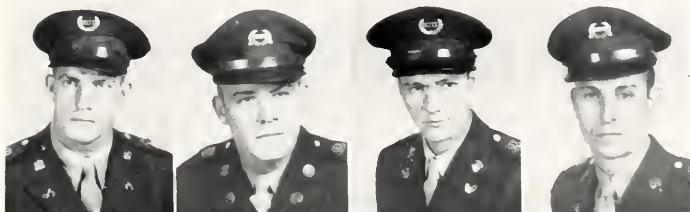
BATTERY "A". left to right, First Row: Norton, Becker, Gibbs, Martin, Burke.
 Second Row: Bradford, Kenney, Gaither, Elder, Ware, Spicer, Fields, Noland.
 Third Row: Bicknell, Carroll, Haney, Greene, Daly, Johns, White, Haney, Cuff.
 Fourth Row: Ball, Combs, Clayton, Barlow, Dale, Bays, Buckley, Arthur.
 Fifth Row: Demetre, Staab, Burch, Ballard, Baker, Boone, Adams, Baldwin.
 Sixth Row: Allison, Collins, Curry, Branham, Combs, Cury, Cochran, Day.



BATTERY B



Cadet Captain Robert E. Robertson Battery Commander	Cadet 1st Lieut. William Lethgo Battery Executive	Cadet 2nd Lieut. John H. McKinney Asst. Battery Exec.	Jane McCord Battery Sponsor
---	---	---	--------------------------------

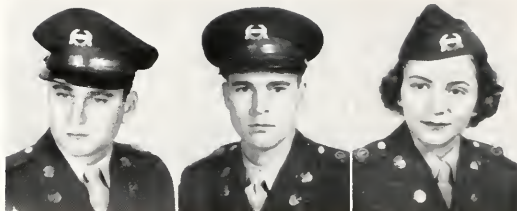


Cadet 2nd Lieut. Richard E. Wilson Platoon Leader	Cadet 2nd Lieut. M. J. Cunningham Platoon Leader	Cadet 2nd Lieut. Robert W. Estep Asst. Platoon Leader	Cadet 2nd Lieut. Jim T. Caudill Asst. Platoon Leader
---	--	---	--

BATTERY "B", left to right, First Row: Coy. Wilson, Lethgo, Robertson, McKinney, Cunningham, Estep.
 Second Row: Fraley, Garrett, Greynolds, Adams, Delaney, Dingus, Hayes.
 Third Row: Hornsby, Huber, Stallard, Morehouse, Ford, Perkins, McKinley, Dunn.
 Fourth Row: Harris, Caudill, Oakley, Frankel, Jones, Dezarn, Howell, Dingus.
 Fifth Row: Foster, Elliston, Perry, Elliott, Doughty, DeSantis, Hensley, Hurst.
 Sixth Row: Harding, Fraley, Napier, Disponett, Elliott, Fannin, Elam, Haggard, Fannin.



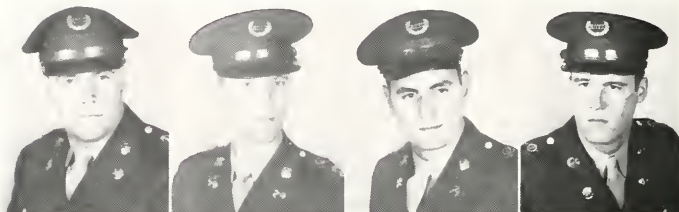
SECOND BATTALION STAFF



Cadet Major
William R. Strong
2nd Battalion Comdr.

Cadet Captain
Ray H. Stocker
2nd Battalion Exec.

Helen Wells
Battalion Sponsor



Cadet 1st Lieut.
Thomas W. Meyer
2nd Battalion Adj.

Cadet 1st Lieut.
Roy D. Rogers
2nd Battalion S-3

Cadet 2nd Lieut.
Chas. R. Richardson
2nd Battalion S-2

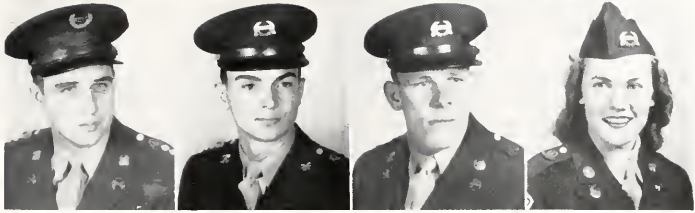
Cadet 2nd Lieut.
William C. Buckley
2nd Battalion S-4

RIFLE TEAM. First Row: Major McDonough, Stocker, Eversole, Scalos, Harrell,
Sergeant Coffman.

Second Row: Gaither, Kagin, Rolph, Baker, Ware.



BATTERY C

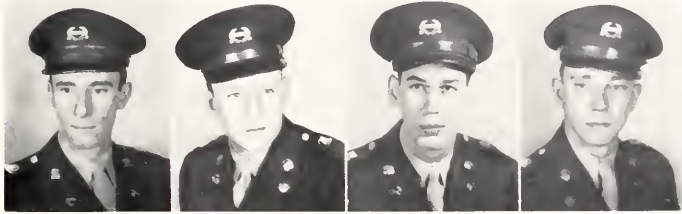


Cadet Captain
Basil E. Seale
Battery Commander

Cadet 1st Lieut.
Jesse C. Holbrook
Battery Executive

Cadet 2nd Lieut.
Egre E. Lewallen
Asst. Battery Comdr.

Ann Gordon
Battery Sponsor



Cadet 2nd Lieut.
Harry Scalos
Platoon Leader

Cadet 2nd Lieut.
Billy K. Gordon
Platoon Leader

Cadet 2nd Lieut.
A. H. Kordenbrock
Asst. Platoon Leader

Cadet 2nd Lieut.
Robert H. Mason
Asst. Platoon Leader

BATTERY "C", left to right, First Row: Gordon, Scalos, Seale, Kordenbrock, Lewallen, Holbrook.

Second Row: Kagin, Pinson, White, Little, Searis, Kirby, Thornton.

Third Row: Wolfinbarger, Nidiffer, Marcum, Pullins, Park, Keltner, Ladenburger, Campbell.

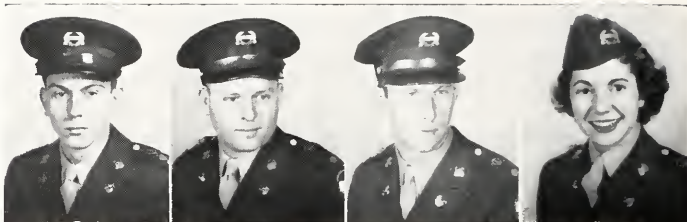
Fourth Row: Smith, Melton, Rigrish, Johnson, Muller, Jewell, Lane, Marcum, Metcalf.

Fifth Row: Shell, Hardin, Pollack, Peters, Mullins, Finley, McNabb, Riggs.

Sixth Row: Miller, Moore, Patrick, Jett, Rice, Lay, Murphy, Rice.



BATTERY D



Cadet Captain Carl J. Eversole
 Battery Commander
 Cadet 2nd Lieut. Edwin Branscum
 Battery Executive
 Cadet 2nd Lieut. Dorsey E. Harrell
 Asst. Battery Exec.
 Patricia Powers
 Battery Sponsor



Cadet 1st Lieut. David R. Shockley
 Platoon Leader
 Cadet 2nd Lieut. James O. Dudding
 Platoon Leader
 Cadet 2nd Lieut. Herbert P. Sallee
 Asst. Platoon Leader
 Cadet 2nd Lieut. Elmer Tolson
 Asst. Platoon Leader

BATTERY "D", left to right, First Row: Dudding, Caudill, Harrell, Eversole, Sallee, Branscum.

Second Row: Valentour, Whittington, Lovett, Gravett, Moore, Young, Helton, Wilson.

Third Row: Stallard, Rolph, Utley, Sammons, Switzer, Smiley, Palahunich, Royalty.

Fourth Row: Wright, Winn, True, Southers, Watson, Roby, Wylie, Myers, Hendricks.

Fifth Row: Tsangeos, Williams, Smiley, Rutledge, Sallee, White, Doty, Rose, Shugars.

Sixth Row: Spain, Spencer, Thompkins, Shugars, Moore.





Organizations

152

MILESTONE STAFF



GEORGE VARDEN

Editor



COLEMAN WITT

Business Manager



PAT RICKEY

Assistant Editor



H. H. LaFUZE

Sponsor



Row 1: Betty Jo Williams, Faculty Editor; Franklin Sanders, Club Editor; Barbara Cohanougher, Asst. Sophomore Class Ed.; Jim Allender, Photographer; June Cleaver, Senior Class Editor; Betty Beaman, Typist.

Row 2: John Paul Jones, Asst. Business Manager; Marianne Auxier, Asst. Club Editor; Roy Rogers, Junior Class Editor; Curtiss Vickers, Senior Class Editor; Ann Hackley, Girls' Sports Editor; George Hembree, Military Science Editor.

Row 3: Betty Sue Murphy, Freshman Class Editor; Kay Wilson, Art Editor; Jim Dudding, Sports Editor; Norma Gschwind, Asst. Junior Class Ed.; Richard Damron, Photographer; Ruth Damron, Snapshot Editor.

Row 4: Bill Park, Club Editor; Mildred Jackson, Typist; Eugene Lefebvre, Graduate Class Editor; Mary Will Hall, Art Advisor; Christine Thacker, Asst. Snapshot Editor; Janie Thompson, Art Advisor.

Row 5: Betty Jane Smith, Freshman Class Editor; Bill McComas, Sophomore Class Editor; Carol Harmon, Senior Class Editor; J. Hill Hamon, Photographer; Leah Rose Brown, Asst. Graduate Editor.

PROGRESS STAFF



Row 1: Betty Jane Smith, Janie Thompson, Joyce Parks.

Row 2: Edith Taylor, Clyde White, Ruth Ann Hulker, Kay Wilson, Laura Ellis, Jayne Trivette.

Row 3: Margaret McDonald, Lena Denham, Ben Turpin, Bill McComas, Bill Vendl, Mr. Paul Duncan, Kitty McKee.

WHO'S WHO AMONG STUDENTS IN AMERICAN COLLEGES AND UNIVERSITIES



Row 1: Patricia Powers, Mary Lee Brooks, Helen Burke Wells, Florence Childress, Elizabeth Park, Marilyn Ward.

Row 2: Joe Kelly Smith, Betty Jo Williams, Laura Mae Atkisson, Evelyn Rogers, Kathleen Justice, Mattie Holbrook, Robert Grise.

Row 3: Joe Harper, Emory Harris, George Varden, Bill Strong, Coleman Witt, Paul Wilson.

Row 4: Joe Rich, Jim Baechtold, Ross Herron.

COLLEGIATE PENTACLE



Row 1: Betty Jo Williams, Mary Lou Sininger, Mrs. Emma Y. Case, Mary Lee Brooks, Evelyn Rogers.

Row 2: Alicia Ernst Kelly, Laura Mae Atkisson, Florence Childress.

CWENS



Row 1: Miss Cleo Stamper, Gwen Combs, Jo Nell Harrod, Ruth Hulker, Wanda Smyth, Peggy Hinton, Mary Lou Jones, Mrs. Emma Y. Case, Mary Lee Brooks.

Row 2: Patsy Knigga, Katherine Keene, Betty Beaman, Dorothy Ogden, Patsy Teater, Marjorie Graden, Gwen Jones, Barbara Cocanougher, Ann McLeaster, Jeannie Stieren.

PI OMEGA PI



Row 1: Betty Jane Smith, Jean Waiser, Shirleen Goodlett, Mary Dott Sidwell, Catherine Hume, Helen Burke Wells.

Row 2: Ann Hackley, Johnnie Morgan, Kathleen Justice, Kathleen Kenney, Sarah Griggs, Mattie Holbrook.

Row 3: Harold Kitrell, Charles Ed Smith, Dean W. J. Moore, Billy Gordon, Claude Vipperman, Mr. Alex McIlvaine.

SIGMA TAU DELTA



Row 1: Ruth Ann Hulker, Evelyn Jean Rogers, Ann McLeaster, Shirley Spires.

Row 2: Dr. Roy B. Clark, Victor Venettozzi, Wanda Smyth, Robert Grise, George Varden.

KAPPA DELTA PI



Row 1: Betty Sue Murphy, Irene Durham, Betty Jane Smith, Alicia Ernst Kelly, Mary Lee Brooks, Ruth Damron.

Row 2: Florence Childress, Betty Jo Williams, Leah Rose Brown, Kitty Covington, Nancye Curry, Mae Maureen Frazier, Joyce Combs.

Row 3: Mr. M. E. Mattox, Carol Harmon, Helen Davis, Mrs. Mabel Jennings, Sara Griggs, Louise Taylor.

Row 4: Stanley Holland, Ross Herron, James Wert, Mr. Alex McIlvaine.

KAPPA PI



Row 1: Carolyn Camp, Jeannie Stieren, Margaret H. Hertzler, Jean Howard, Kay Wilson, Ann McLeaster, Janie McCord.

Row 2: Mary A. Ford, Betty Isaacs, Jackie Haynie, Joyce Noe, Linda Fulkerson, Norma Jean Slusher.

Row 3: Miss Allie Fowler, Kenneth Norvell, Richard Flatt, Archie Ware, Buddy McKinley, Barbara Cocanougher, Mr. Dean Gatwood.

Row 4: Henry Kline, Edward French, Clyde White, Dr. Fred Giles.

ALPHA PSI OMEGA



Row 1: Laquata W. Brooks, Mr. Keith Brooks.

Row 2: Eagle Doty, Joseph Rich, William Greynolds, Keith Wiggins.

SIGMA TAU PI



- Row 1: Joyce Parks, Betty Jane Smith, Jean Walser, Shirleen Goodlett, Catherine Hume, Mary Dott Sidwell, Jean Seeley, Patsy Purkey.
- Row 2: Kathleen Kenny, Johnnie Morgan, Betty Herold, Ann Hackley, Freddie Lois Engle, Kathleen Justice, Thelma Pearl Binge, Martha Rose May.
- Row 3: Charles Ed Smith, Morris Freeman, Earl McQueen, George Norton, Charles Schmitt, Claude Viperman, Edgar Kidwell, Hobert Loy White.
- Row 4: Harold Kitrell, Billy Gordon, Paul Trieschman, Dean W. J. Moore, Donald Akin, Donald Combs, Robert Garrett.
- Row 5: Marvin Bledsoe, William Ralph Burke, Bob Robertson, Glen Helton.

"E" CLUB



- Row 1: Brian Gibbs, Jack Jones, Dave Rodgers, Bob Robertson, Roger Geyer, Roy Moores.
- Row 2: Don Augsback, Carl White, Bob Shockley, John Dorman, Walter Green, Ross Herron, Chuck Schmitt, Roy Kidd, Nick Tsangeos.
- Row 3: Clay Moore, Egre Lewallen, Bill Bales, Elmer Tolson, Jim Bingham, Alex Stephens, Howard Gracey, George Pavlovich, Bob Faust, Dick Wilson, Bill Adams.
- Row 4: Chuck Hertzner, James Odle, Gordon Fleck, Jim Dudding, Tom McAnallen, Alex Kolakowski, John Paul Jones, John Hart Delaney, Ed McNabb, Don Akin.
- Row 5: Carl Eagle, Jim Baechtold.

HOME ECONOMICS CLUB



Row 1: Charlotte Rees, Hazel Yankey, Carolyn Carpenter, Peggy Anderson, Shelby Wilburn, Peggy Shackelford, Marianne Durrett, Alicia Kelly.

Row 2: Mrs. Pickett, Norma Richardson, Ann Stevens, Barbara Barber, Julia Ann Johnson, Eleanor Jones, Kitty McKee, Joan Hafer, Ann Calmes, Lois Combs, Anr Riley, Miss Burrier.

Row 3: Betty Jo Williams, Nina Purcell, Doris Lewis, Barbara Burnett, Nancye Curry, Dorothy Berry, Cynthia Jones, Kitty Covington, Barbara Welch, Dotty McPherson, Louise Antle, Norma Simms, Sue Carol Lewis, Lizabeth Webb, Effie Gilbert.

Row 4: Barbara Hill, Wilma Wagel, Jean Turner, Anita Lankford, Sara Conn, Janice Treadway, Marianne Auxier, Denyse Campbell, Jean Linder, Marjorie Graden, Thelma Park, Betty Magruder, Elizabeth Cox.

Row 5: Elizabeth Harris, Jane Skaggs, Sophia Fields, Anna Durbin, Peggy Hinton, Glenna Hayes, Dixie Trapp, Nancie Stone, Edna Pollard, Mary Ann Mason.

NEWMAN CLUB



Row 1: Dick Wilson, Bill Searls, Margaret McDonald, Jean Stieren, Violet Barnoit, Lois Pyatt, Ann Carol Elder, Father Janson.

Row 2: Nick DeSantis, Dick Whittington, Jimmy Burch, Buddy Cury, Joe Leone, Alex Kolakowski, Jim Cunningham.

Row 3: Frank Keller, Bobby Elder, Bob Faust, Charles Schmitt, Tom McAnallen, Robert Wiley.

MUSIC CLUB



Row 1: Florence Tanner, Florence Childress, Doris Horn, Barbara Ball, Mary Loa Jones, Patricia Powers, Rhoda Winn, Peggy Lewis, Mae Belle Martin.

Row 2: Waverly Berry, Janice Halliday, Hannah Ketzner, Ethel Schell, Joan Neff, Lawrence Harris, Betty Carson, Laura Mae Atkisson, Peggy Chandler.

Row 3: Holly Chilton, Bob Likins, Mr. James E. Van Peurse, Bob Ford, Elizabeth Caywood, Evelyn Parks Rymer, Juanita Thompson, Dave Caylor, Carroll Shaver.

Row 4: Wayne Pressiey, Hank Romersa, Don Knowland, Edmund Burke, Doug Gaither, Jim Baker, Mr. Thomas Stone, Gordon Fleck.

BIOLOGY CLUB



Row 1: Dorothy Ogden, Billie Jean Engle, Norma Pickett, Janie Thompson, J. Hill Hamon, Mr. A. L. Whitt, James Wert, Geraldine Bettinger, Mary Lou Sininger, Martha Williams, Jo Nell Harrod.

Row 2: Mr. William Hopp, Bob Burkich, Coleman Witt, Robert Costigan, Vernon Cooper, John Paul Jones, Kenneth Chandler, Paul Bybee, William Strong, Jessie Abney, Dr. H. H. LaFuze.

WORLD AFFAIRS CLUB



Row 1: Dorothy Berry, Betty Sue Murphy, Betty Dozier, Mary Frances Carroll, Aveline Antonio, Eva Duka, Louise Taylor, Shirley Pettit.

Row 2: Earl McQueen, Harry Wilson, Al Bianchi, Robert Gritton, Don Akin, Bill Strong, George Norton.

Row 3: Keith Wiggins, William Greynolds, Joe Rich.

SOCIETY OF THE PLOW



Row 1: Clifton Taylor, Ralph Ballard, Gary Russell.

Row 2: John Delaney, Lee Roy Morehouse, George McKinney, J. R. Turner.

K Y M A



Row 1: Laura Ellis, Peggy Hinton, Delores Daniel, Pat Powers.

Row 2: Bonnie Nevins, Betty Ann Crank, Patsy Purkey, Betty Carol Osborne, Elizabeth Park, Ann Stevens, Joyce Parks, Helen Parke.

Row 3: Eleanor Wilson, Kitty McKee, Evelyn Rogers, Barbara True, Janie McCord, Nancy Harris, Betty Jo Williams, Elizabeth Harris, Charlotte Hume, Martha Rose May.

Row 4: Bob Garrett, Bobby Elder, Frank Matthews, Eugene Lefebvre, Milton Martenson, Clyde White, Kenneth Norvell, Huey Brooks.

DEBATE TEAM



Seated: William Greynolds, Joe Rich, Eudell Dunaway.

Standing: Victor Venettozzi, William Johnson, Robert Jewell, Mr. Keith Brooks.

BAND



Row 1: H. M. Atkisson, Delores Holbrook, Marty LeFevers, Jennie Chattin, Billie Lynn Ballard, Forest Hunter.

Row 2: Elizabeth Caywood, Carroll Shaver, Florence Tanner, Roger Ladenburger, Alva Fraley, Peggy Chandler, Mary Ford, Evelyn Rymer, Julia Wiedekamp, Marlene Young, Donna Lowry, Juanita Thompson.

Row 3: Frank Elliston, Ben Turpin, Gene Tompkins, William Hurst, Mary Lou Jones, James Walters, Joan Neff, Bonnie Fairchild, Dorothy Crady, Betty Carson.

Row 4: Wayne Pressley, Walter Russell, Jack Holland, Hubert Mullins, Robert Likins, Ethel Schell, Gwen Jones, Harold Roop, Gayle Marshall, Janice Halliday.

Row 5: Jimmy Snyder, Mary Cecil Horn, Emory Harris, Waverly Berry, Doug Gaither, Jimmy Winn, Martin Becker, Eva Ruth Haden, Jim Baker.

Row 6: Hank Romersa, Peggy Atkisson, Claude Hubbard, Lowell Sallee, Ray Tingle, James Green, James Albert Moore, Don Knowland.

Row 7: Edmund Burke, Harold Warford, David Caylor, Virgil Cook, Kenneth Massey, Paul Hager, Elijah Ask, Holly Chilton.

OFF-CAMPUS WOMEN'S CLUB



Row 1: Barbara Ballou, Pauline Coyle, Norma Tevis.

Row 2: Jane Rose, Beverly Wilson, Juanita Rowlette, Ann Gordon, Evelyn Rogers, Billie Davis.

Row 3: Fannie Lee Newby, Ann Carol Elder, Helen Parke, Betty Ann Rush, Mrs. Katherine Chenaut, Barbara Faulkner, Thelma Park, Anne Edwards.

MATH CLUB



Row 1: Harold Hall, Glenn Check, James Wert, Jesse Holbrook.

Row 2: Morris Freeman, Dr. Smith Park, Doris Schuh, Jeanette Russell, Mary Lee Brooks, Darnell Salyer.

Row 3: Don Fields, Jack Shell, Jimmy Stambaugh, George Hembree, Milton Martenson, Joe Kelly Smith, Jimmy Kirby, James Watson.

CADUCEUS CLUB



Row 1: Dorothy Ogden, J. Hill Hamon, Geraldine Bettinger, Mary Lou Slinger, Coleman Witt, Jo Nell Harrod.

Row 2: Jessie Abney, Paul Bybee, Kenneth Chandler, Vernon Cooper, John Paul Jones, Bob Burkich, Charles Carty.

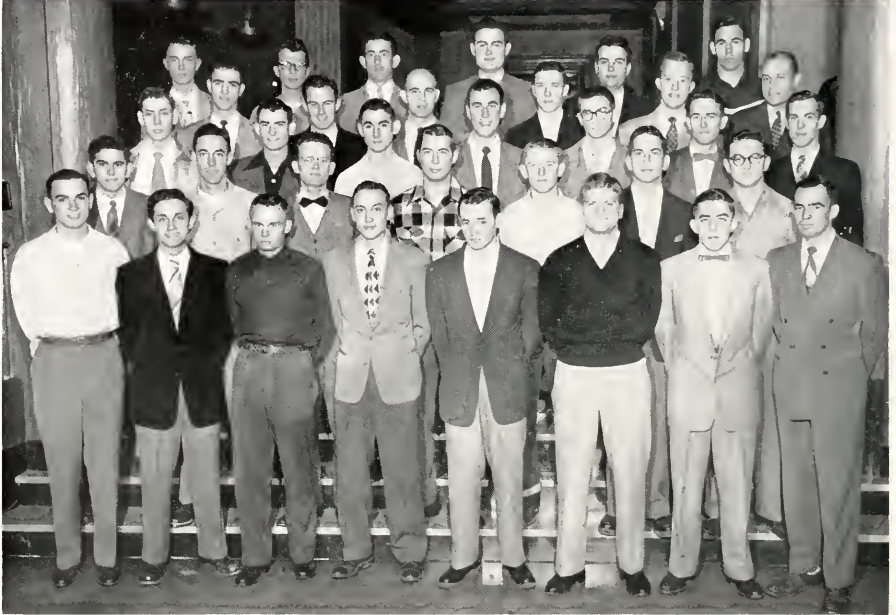
STUDENT UNION MUSIC COUNCIL



Row 1: Florence Childress, Alice Wilson, Laura Mae Atkisson, Elizabeth Caywood, Mrs. Katherine Chenault, Patricia Powers, Florence Tanner, Evelyn Parks Rymet.

Row 2: Waverly Berry, Peggy Chandler, Peggy Lewis, Juanita Thompson, Gayle Marshall, Peggy Hinton, Mary Lou Jones.

INDUSTRIAL ARTS



Row 1: Jesse Holbrook, Dave Burggett, John Boggs, James Humphrey, James Coots, Bruce Fraley, Chester Greynolds, Morris Webb.

Row 2: Walter Stacey, Harold Wampler, Roy Burberry, Bill Searls, Ralph Rutledge, George McKinney, Paul Rolph.

Row 3: Charles Miller, Hiram Snowden, Harold Hall, Lawrence Daniels, Bill Barnes, John Ryan, Leland Crabtree.

Row 4: Charles Gibson, Elmo Martin, Mr. Homer Davis, Franklin Elliston, Mr. John Rowlett, Mr. Ralph Whalen.

Row 5: Bill Baldwin, Bob Bauer, Charles O'Hearn, Virgil Cook, Bill Wesley, Jesse Reed.

SIGMA LAMBDA



Row 1: Barbara Ballou, Dorothy McPhail, Ann McLeaster, Betty Mayo, Eva Duka, Doris Lynn Smith, Janet Damron, Connie Robinson, Betty Sue Murphy.

Row 2: Mary Ruth Pullon, Curtiss Vickers, Annette Jeter, Ruth Hulker, Dorothy Ogden, Elizabeth Sutton, Billie Davis, Dr. Janet Murbach.

Row 3: George Varden, Jennie Steil, Peggy Kraus, Wanda Smyth, Patsy Knigga, Irene Isaacs, Victor Venettozzi.

Row 4: Eric Campbell, John Lillis, James Morris, Eugene Lefebvre, Joe Rich, William Greynolds, Bob Spicer.

Row 5: Robert Grise, Bill Pickett, Howard Coop, Harold Richardson.

CHESSE CLUB



Row 1: John Watson, Beulah Humfleet, Josephine Dickerson, Mrs. Katherine Chenuault, Jean Cox, Ina Anderson, Nell Wilson

Row 2: Gene Adkins, James Watson, Bruce Bates, Robert Roby, Roger Stephens, Doug Gaither, Bill Vendl, Clarence Heiss.

CANTERBURY CLUB



Row 1: Louise Taylor, Betty Mayo, Shirley Spires, Elizabeth Diehl, Ann McLeaster, Janet Damron, Curtiss Smith, Patsy Knigga.

Row 2: George Varden, Irene Isaacs, Evelyn Rogers, Ruth Hulker, Kay Wilson, Wanda Smyth, June Cieaver, Robert Grise.

Row 3: Dr. Roy B. Clark, Harold Richardson, Charles Lamb, Bill Strong, Joe Kelly Smith, Bob Spicer, Victor Venettozzi, Joe Rich, William Greynolds.

Y.W.C.A.



Row 1: Mary Cecil Horn, Florence Childress, Twila Simpson, Leah Rose Brown, Charlene Farris, Mary Elizabeth Kearns.

Row 2: Florence Hussung, Mary Ann Rankin, Pat Rickey, Wanda Smyth, Jo Ne'l Harrod, Joan Hater, Ruth Hulker, Judith Saunders.



Y.M.C.A.

Row 1: Richard Flatt, Richard Howard, Huey Brooks, Roy Rogers.

Row 2: Marion White, Bill Park, Bob Little, Pat Dale.

PHOTO CLUB



Row 1: Ella Jean Venable, Doris Lewis, Betty Sue Boyman, Aline Shelton Mullins, Jean Walser, Ruth Damron.

Row 2: Curtiss Vickers, Phyllis Williamson, Christine Thacker, Jayne Trivette, Ann Hackley.

Row 3: Darnell Salyer, Helen Davis, Joyce Combs, Grace Marie Denny, Frankie Preston, Harry Wilson.

Row 4: David Byers, Monroe McGuire, Richard Damron, June Cleaver, James Murphy, Buddy McKinley, Dr. H. H. LaFuze.

BAPTIST STUDENT UNION



Row 1: Marjorie Hall, Janie Parke, Pat Spoonamore, Morris Freeman, Mary Lou Schirmer, Martha Williams, Patsy Knigga.

Row 2: Beth Hayworth, Jo Nell Harrod, Grace Denny, Johnnie Morgan Lurie Howard, Dorothy Ogden, Dorothy Berry.

Row 3: Claude Smith, Mr. J. H. Davis, Ken Massey, Joe Smith, Barbara Cocanougher, Everett Bickers.

WOMEN'S RESIDENCE HALL ORGANIZATION



BURNAM HOUSE COUNCIL

- Row 1: Mrs. Emma Y. Case, Phyllis Carter, Carol Harmon, Connie McAuley, Ann Covington, Charlotte Rees, Anna Jean Durbin, Mrs. John T. Hagan.
- Row 2: Betty Carole Osborne, Mary Carol Boone, Marianne Auxier, Charlene Farris, Nina Purcell, Leah Rose Brown, Lavern Stephens, Eunice Arnett.



STATELAND HOUSE COUNCIL

- Row 1: Bernice Bernard, Mrs. Stella Musick.
- Row 2: Mary Frances Carroll, Virginia Durbin, Ann Lowry, Cynthia Jones.

WESLEY FOUNDATION



Row 1: Rev. William H. Poore, Frankie Campbell, Charlene Farris, Mrs. C. E. Hurst, Blanche Viall, Jennie Steil, Phyllis Piper, Mr. H. W. Raper.

Row 2: Robert Jewell, Annette Jeter, Naomi Davis, Janice Treadway, Mary Ann Rankin, Emily Bell, Edith Taylor, Faye Brown, Mary Elizabeth Kearns, Robert Grise.

Row 3: Jerry Wright, Bill Park, Roy Rogers.

WESTMINSTER FELLOWSHIP



Row 1: Mrs. Elizabeth Bosley, Mary Lee Brooks, Mary Lou Jones, Joyce Combs,
Florence Husung, Jennie Still, Rev. Oliver Carmichael.

Row 2: Ray Tingle, Sondra Burton, Peggy Kraus, Paul Hager.

DRUM AND SANDAL



Row 1: Joyce Bond, Leah Rose Brown, Marilyn Ward, Carolyn Camp, Joyce McBrayer, Nancy Kitrell.

Row 2: Sara Conn, Mary Will Hall, Nancy Rickey, Frances Rogers, Patricia Rickey, Miss Mildred Vance, Kitty McKee.

WOMEN'S RECREATIONAL ASSOCIATION



Row 1: Miss Charlotte Watson, Margaret Bolin, Virginia Richardson, Sondra Burton, Jo Jarboe.

Row 2: Betty Gullady, Beth Schwertman, Kathryn Keene, Bonnie Schram, Elvira Short, Lavern Stephens, Laura Ellis.

Row 3: Martha Williams, Mary Horan, Marilyn Walker, Joyce Goodrich, Eunice Arnett, Twila Simpson, Dona Heil.

CHRISTIAN STUDENT FELLOWSHIP COUNCIL



Row 1: Judith Saunders, Joan Hafer, Leah Rose Brown, Avelyn Antonio, Martha Applegate, Wilma Wagel, Jane Gregory.

Row 2: Frances Brown, Sara Griggs, Marjorie Graden, Eva Ruth Haden, Eleanor Jones, Dorothy Crady.

Row 3: Betty Magruder, Wanda Smyth, Bruce Bates, Dr. F. N. Tinder, Robert Likins, Glenn Johnson.

LITTLE THEATRE CLUB

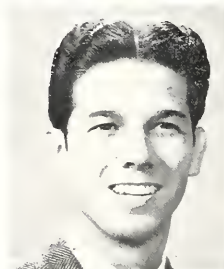
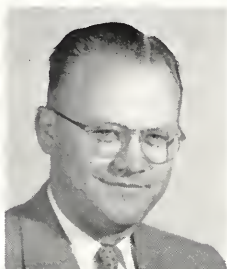


Row 1: Laura Ellis, Helen B. Wells, Laquata Brooks, Charlotte Hume, Ruth Hulker.

Row 2: Keith Wiggins, Bruce Bates, Mr. Keith Brooks, Joseph Rich, Eagle Doty.

Row 3: Richard Wilson, Karl Kepler, Bill Greynolds.

ALUMNI ASSOCIATION



ALUMNI OFFICERS 1951-52

President

Mr. Paul R. Bunton, '48
Lexington, Ky.

1st Vice President

Mr. Homer Ramsey, '39
Whitley City, Ky.

2nd Vice President

Miss Mary K. Ingels, '37
Cynthiana, Ky.

EXECUTIVE COMMITTEE

Miss Mary F. McKinney, '21
Executive Secretary
Richmond, Ky.

Mr. Norbert Rechlin, '38
Louisville, Ky.

Mr. Ben Hord, Jr., '33
Louisville, Ky.

Miss Madeline Coran, '45
S. Ft. Mitchell, Ky.

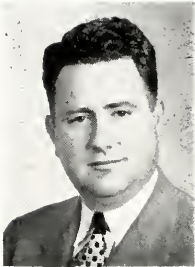
Mr. Eugene Rall, '47
Frankfort, Ky.



Administration



BOARD OF REGENTS



Wendell F. Butler
Superintendent of
Public Instruction
Ex-Officio Chairman



W. E. Blackburn
Pikeville, Ky.



John S. Juett
Williamstown, Ky.



Cecil Sanders
Lancaster, Ky.

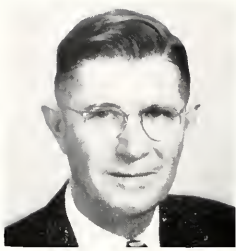


A. C. Jones
Harlan, Ky.

PRESIDENT



W. F. O'DONNELL



William J. Moore
Dean



Melvin E. Mattox
Registrar



Mrs. Emma Y. Case
Dean of Women



D. J. McCarty
*Director of
Public Relations*



Charles A. Keith
Dean of Men



Noel B. Cuff
*Director of
Personnel*



G. M. Brock
Business Agent



J. D. Coates
*Principal of
Model High School*



Miss Mary Floyd
Librarian



R. A. Edwards
*Principal of
Elementary Training
Schools*



W. A. Ault
*Superintendent of
Buildings and Grounds*



E. P. McConnell
Bookkeeper



Katherine Chenault
*Hostess, Student Union
Building*



Edith L. Mellvaine
*Supervisor of
the Cafeteria*



Fred Ballou
Book Store Manager

STAFF



- Row 1: Louise Broaddus, Recorder, Registrar's Office; Lois Colley, Secretary to the President; Mrs. Bessie H. Griggs, Information Clerk; Betty Blair Jones, Secretary, Alumni Office.
- Row 2: Norma Keesey Lewallen, Clerk Typist, Business Office; Anna Moores, Secretary to the Correspondence Department; Mrs. E. L. Musick, Housemother, State-land Hall; Helen Perry, Assistant to the Director of Personnel.
- Row 3: Clara Points, Secretary to the Business Agent; Carrie Potts, Secretary to the Registrar; Alma Reed, Secretary to Director of In-Service Education; Mrs. W. C. Younce, Typist, Department of Music.



Faculty





Kerney Adams
History



Ann Alvis
Elementary Education



Harold Atkisson
Music



Clifton Basye
Physics



J. G. Black
Physics



Virginia Blackburn
Secondary Education



Keith Brooks
English



Pearl Buchanan
English



Virgil Burns
Government



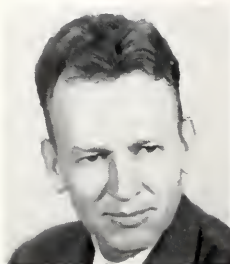
Mary King Burrier
Home Economics



Jane Campbell
Music



A. B. Carter
Agriculture



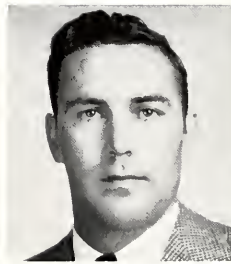
Richard Chrisman
Commerce



Roy B. Clark
English



Meredith J. Cox
Chemistry



Fred Darling
Physical Education



J. H. Davis
Industrial Arts



N. G. Deniston
Industrial Arts



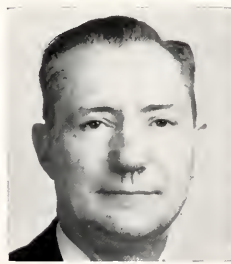
Mary Dickerson
Library



J. T. Dorris
History



F. A. Engle
Education



D. T. Ferrell
Education



Edith Ford
Commerce



Allie Fowler
Art



Dean Gatwood
Art



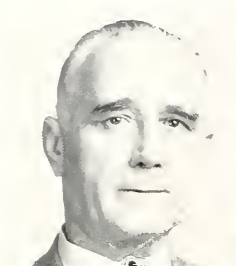
Fred P. Giles
Art



Anna Gill
Commerce



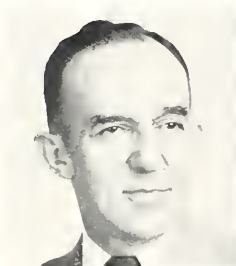
P. M. Grise
English



G. M. Gumbert
Visual Education



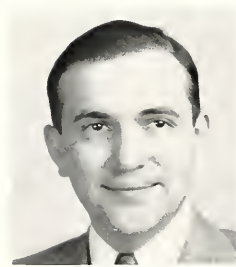
May C. Hansen
Education



Thomas C. Herndon
Chemistry



Gertrude Hood
Physical Education



William Hopp
Biology



Saul Houchell
English



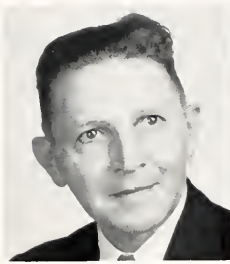
Charles T. Hughes
Physical Education



Mable Jennings
Elementary Education



William L. Keene
English



L. G. Kennamer
Geography



H. H. LaFuze
Biology



Cora Lee
Secondary Education



Clyde Lewis
History



Paul McBrayer
Physical Education



Alvin McGlasson
Mathematics



Alex G. McIlvaine
Commerce



Mary Frances McKinney
Geography



Mrs. Lester Miller
Library



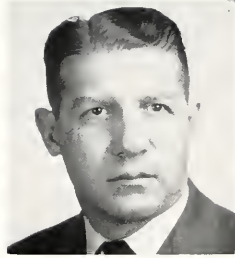
Margaret Moberly
Commerce



Janet Murbach
Romance Languages



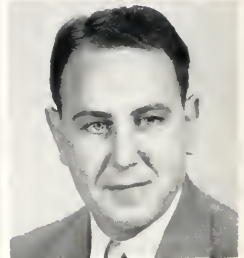
Smith Park
Mathematics



Glenn Presnell
Physical Education



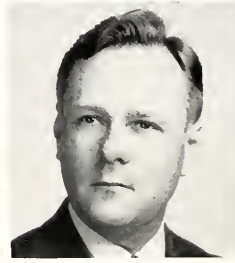
Ellen Pugh
Elementary Education



H. W. Raper
History



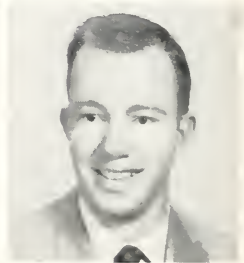
Alma Regenstein
Secondary Education



R. R. Richards
Commerce



Harold Rigby
Secondary Education



John W. Rowlett
Industrial Arts



Ruby Rush
Secondary Education



Tom C. Samuels
Physical Education



Anna A. Schneib
Education



Mamie West Scott
Elementary Education



Blanche Seevers
Music



Cleo Stamper
Library



William Stocker
Agriculture



Thomas J. Stone
Music



Virginia Story
Elementary Education



Ida Pearl Teater
Secondary Education



Brown E. Telford
Music



James R. Turner
Agriculture



Mrs. Julian Tyng
Education



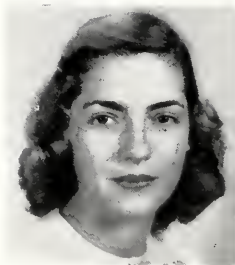
James E. Van Peursem
Music



Vasile Venettozzi
Music



Samuel Walker
Mathematics



Charlotte Watson
Physical Education



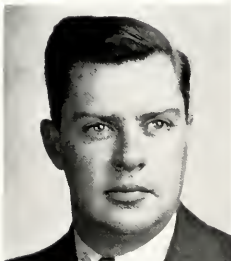
Ralph Whalin
Industrial Arts



Mrs. Guy Whitehead
Library



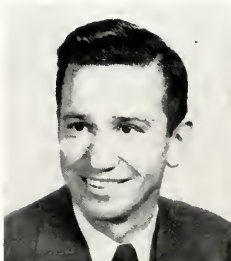
A. L. Whitt
Biology



A. L. Wickersham
Secondary Education



Elizabeth Wilson
Elementary Education



Leland Wilson
Secondary Education



Germania Wingo
Elementary Education

I N D E X

— A —

Abney, Jessie	39	Berryman, Margaret	27	Camp, Carolyn	60
Adams, Billy	79	Bettinger, Geraldine	20	Campbell, Alma Faye	49
Adams, Kerney	180	Beverly, Archie	51	Campbell, Eric	66
Adams, Logan	78	Bianchi, Alfred	27	Campbell, Jane	180
Adams, William	46	Bickers, Everett	72	Campbell, Denyse	72
Adkins, Gene	21	Bicknell, Rudy	75	Campbell, Mary Frances	76
Adkins, Winston	37	Bingham, James	66	Canterbury Club	161
Akin, Donald	21	Biology Club	148	Carnahan, Ruby B.	66
Albright, Kathleen	73	Black, J. G.	180	Carpenter, Betty	66
Allen, James	65	Black, Leonard E.	37	Carrington, Dixie	60
Allen, Sophia	40	Black, Ruth	79	Carroll, James	78
Allender, James	78	Blackburn, Virginia	180	Carroll, Mary Frances	51
Allison, Jasper	19	Blackburn, W. E.	171	Carson, Betty	61
Allison, Roy	67	Blakely, John	75	Carter, A. B.	180
Alpha Psi Omega	142	Boggs, John	55	Carer, Phyllis	84
Alumni Association Officers	172	Bolin, Margaret	77	Carroll, Mary Alice	75
Alvis, Ann	180	Bond, Jack	52	Carty, Charles	24
Anderson, Delbert	62	Boone, Edwin	73	Carty, D. J.	176
Anderson, Ina Claire	66	Boone, Mary Carol	66	Case, Emma Y.	176
Anderson, James	33	Bottom, Jewell	45	Caudill, Archolene	62
Anderson, Peggy	79	Bowling, Walter	39	Caudill, James	65
Antle, Laura Louise	65	Bowman, Dicie Jame	77	Caudill, Jimmy	78
Antonio, Avelyn	40	Bowman, Joan	75	Caylor, David	72
Applegate, Martha	74	Bowman, Thelma	22	Caywood, Elizabeth	64
Arnett, Barbara	77	Bradford, William	61	Chambers, Martha	64
Arnett, Eunice	66	Branham, Etta Lee	32	Chandler, Kenneth	38
Arnold, Hazel	65	Branham, Roy	75	Chandler, Peggy Ann	77
Arrington, Charles	78	Branscum, Edwin	48	Chattin, Jennie	60
Asbury, Emma Lou	72	Bray, Arroma	34	Cheek, Glenn	51
Ask, Elijah	64	Brewer, Mary Edith	36	Chenault, Katherine	177
Atkisson, H. F.	180	Broadus, Louise	178	Chess Club	160
Atkisson, Laura	31	Brock, G. M.	176	Childress, Florence	25
Augsback, Don	52	Brock, Wade	77	Chilton, Holly	29
Auxier, Marianne	52	Brooks, Huey	63	Christian Student Foundation	
Ault, W. A.	177	Brooks, James	78	Council	170

— B —

Bach, Phyllis	64	Brooks, Keith	180	Chrisman, Richard	181
Back, Ollie J.	29	Brooks, Laquata W.	36	Christy, Nita Kay	78
Baechtold, James	33	Brooks, Lavern	55	Clark, Roy B.	181
Baker, James	79	Brooks, Lula	79	Clark, Elizabeth Mae	61
Baker, Hubert	61	Brooks, Mary Lee	24	Clayton, Paul	77
Baker, Peggy	59	Brotherton, Margaret	73	Cleaver, June	35
Baldwin, Noland	66	Broughton, Anna Marie	50	Coates, J. Dorland	176
Baldwin, William	74	Broughton, Willma Jean	24	Cocanougher, Barbara	52
Bales, Don	52	Brown, E. C.	34	Cochran, Roy	74
Ball, Leon	74	Brown, Faye	78	Coffman, Sheldon	123
Ball, William	78	Brown, Glenn	58	Coleman, Ira Leo	55
Ballard, Billie	77	Brown, Leah Rose	72	Collegiate Pentacle	136
Ballard, Ralph	78	Brown, Frances	64	Colley, Lois	178
Ballard, Ureay	64	Browning, Edward	78	Collins, James	73
Ballou, Barbara	72	Bruce, Ella Mae	50	Collins, Paul	78
Ballou, Fred	177	Bruce, Gorman	52	Combs, Donald	52
Band	153	Bruce, Raymond	52	Combs, E. M.	72
Baptist Student Union Council	164	Brummett, Peggy	65	Combs, Irvin Clyde	72
Barber, Barbara Ann	47	Bryant, Chetter	61	Combs, Joyce	45
Barker, Ann	61	Buchanan, Pearl	180	Combs, Lois	27
Barnes, William	21	Buck, William	29	Combs, Ramona	49
Barnes, William W.	60	Buckley, Robert	59	Conn, Sara	66
Barnott, Violet Deane	79	Buckley, William	24	Cook, Gordon	59
Baseball Team	177	Bunch, Forence	71	Cook, Jean Elizabeth	37
Basketball Team, Freshman	114	Burch, James	77	Cook, Joyce	51
Basketball Team, Girls	119	Burberry, Roy	54	Cook, Virgil	20
Basketball Team, Varsity	111	Burdine, Marvin	33	Coop, Howard	67
Basye, Clifton	180	Burgett, Dave	62	Cooper, Vernon	19
Bateman, Jimmie Sue	78	Burke, Edmund	61	Corpuz, Teodora	41
Bates, Bruce	66	Burke, Ralph	32	Cornette, Theresa	32
Bauer, Robert K.	52	Burkich, Bobbie	32	Correll, Charles	74
Bays, Karl	72	Burkich, Bobby	28	Cotrell, Patsy	19
Beaman, Betty	59	Burnett, Barbara	52	Couch, Raleigh	30
Bearden, James T.	61	Burns, Virgil	180	Covington, Ann	45
Becker, Jon Liddell	73	Burrier, Mary King	190	Covington, Audrey	79
Becker, Kenneth	51	Burton, Janice	71	Cowles, Col. Stuart L.	123
Becker, Martin	63	Burton, Sondra	67	Cox, Alma McIntosh	49
Begley, John	52	Buskirk, Laurence	37	Cox, Bradie	38
Eell, Emily	77	Butler, Wendell P.	174	Cox, Marion	60
Bell, Pat	78	Bybee, Paul	64	Cox, Meredith	181
Benge, Thelma Pearl	48	Byers, David	52	Cox, Peggy	78
Bentley, Clea	39	— C —		Coy, Ray Austin	71
Bernard, Bernice	33	Caduceus Club	156	Coyle, Pauline	21
Berry, Doty Kate	47	Caldwell, Gaynor	49	Crabtree, Leland	48
Berry, Waverly	77	Calhoun, Vernon Jack	52	Crady, Dorothy	74
		Callahan, Claude	34	Crank, Betty	59
		Calmes, Ann Evelyn	20	Crepps, Lila June	46

Cromer, James	72	Elliott, Forrest D.	23	Graden, Marjorie Ann	60
Cruce, Mary Joan	79	Elliott, Harry	52	Grant, Dannie	74
Cuff, Edwin	73	Elliott, Humphrey	76	Gravett, Gerwood	54
Cuff, Noel B.	176	Ellis, Laura	47	Green, James	73
Cunningham, James	19	Elliston, Frank	72	Green, Walter	31
Curry, Nancye	49	Engel, Freddie Lois	22	Greene, Paul	78
Curry, Ronald	66	Engle, Annette	65	Greer, Barbara	62
Cury, Buddy	71	Engle, Billy Jean	46	Gregory, Jane	72
Cwens	137	Engle, F. A.	181	Greynolds, Chester	71
— D —		Engle, Junella	54	Greynolds, Williams	47
Dale, Edwin	77	Ernst, Doris	71	Griffith, Edward	27
Dale, Pat	74	Ernest, Lucille	22	Griggs, Bessie H.	176
Daly, Don	72	Estes, Beatrice	46	Griggs, Jamie	35
Damron, Janet	49	Evans, Robert A.	41	Griggs, Sara	39
Damron, Richard	45	Evans, Willette Sue	61	Grise, P. M.	182
Damron, Ruth	26	Eversole, Carl	24	Grise, Robert	25
Daniel, Delores	77	Eversole, James	41	Grise, Tommy	46
Daniels, Imogene	52	— F —		Gritton, Robert	31
Daniels, Lawrence	47	Fairchild, Bonnie	72	Gschwind, Norma	45
Darling, Fred	181	Fannin, Grover	75	Guenther, Nancy	74
Davidson, Harold	25	Fannin, Lovell	76	Gullady, Betty	74
Davidson, Irene	63	Farmer, Kenny	40	Gumbert, G. M.	182
Davis, Billie L.	72	Farney, Reeda	65	Guy, Ethel	71
Davis, Eugene	61	Farris, Charlene	54	— H —	
Davis, Eugene W.	51	Faulkner, Barbara	29	Haaman, George	28
Davis, Helen	19	Faust, Robert	21	Hacker, Charles	65
Davis, J. H.	181	Ferrell, D. C.	181	Hacker, Omar	37
Davis, Naomi	72	Fields, Donald	63	Hackley, Ann	20
Day, Marvin	79	Fields, Mary Jane	76	Haden, Eva Ruth	79
Deal, Mary Lee	79	Fields, Sophia	62	Hafer, Joan	59
Dearing, Jamie	40	Fights, Will Robert	62	Hager, Paul	65
Deaton, Helen Rose	62	Finley, Ronald	62	Haggard, Albert	72
Debate Team	152	Flanary, Bonnie	28	Hall, Evelyn	46
Dedman, Robert	26	Flatt, Richard	38	Hall, Gary	74
Delaney, John	52	Fleck, Gordon	51	Hall, Harold	22
Demetre, George	74	Floyd, James N.	73	Hall, Marjorie	65
Denham, Lena	63	Floyd, Mary	176	Hall, Mary Will	54
Deniston, N. G.	181	Floyd, Winden	37	Hall, Preston H.	78
Denny, Grace	62	Football Team	104	Halliday, Janice	77
DeSantis, Nick T.	76	Ford, Edith	181	Hamblin, Lois Jo	74
De Simone, Kelly	31	Ford, James	77	Hamilton, Della	71
Dezarn, Bobby	74	Ford, Mary Auxier	46	Hamil on, Nelson	37
Dickerson, Josephine	66	Ford, Robert	46	Hamm, Naomi	72
Dickerson, Mary	181	Foster, Hunter	72	Hammond, William B.	123
Diehl, Elizabeth	38	Fowler, Allie	181	Hammonds, Charles	54
Dingus, Jack	73	Fraley, Alva Marie	75	Hammons, Anne	72
Dingus, LeMayne	76	Fraley, Bruce	54	Hammons, Chelis	45
Disponett, Bobby	71	Fraley, Harold	71	Hammons, Leila	26
Dixon, Lee	50	Frankel, Ray M.	59	Hamon, Elizabeth Cox	21
Dorman, John	34	Frazier, Andrew	55	Hamon, J. Hill	25
Dorris, J. T.	181	Frazier, Mae	35	Hamon, Thresea	71
Doss, Carl Leo	33	Freeman, Morris	26	Haney, Howard	75
Doty, Eagle	61	French, Daisy	63	Haney, Paul	59
Doty, Henry	47	Fulkerson, Linda	67	Hansen, May C.	182
Doughty, John	72	— G —		Hardin, Edgar	77
Dozier, Betty	19	Gabbard, Betty	64	Harding, William	75
Dozier, Randolph	64	Gaines, Sue Barbara	22	Harmon, Carol	33
Drum and Sandal	168	Gaither, Douglas	63	Herold, Betty	49
Dudding, James	33	Galbraith, Martha	67	Harper, Joe	24
Dudley, Steels	74	Garrett, Robert	50	Harris, Billy	74
Dugger, Robert	39	Gatliff, Noel	47	Harris, Charlotte	79
Duka, Eve	40	Gatwood, Dean	182	Harris, Elizabeth Ann	59
Dunaway, Eudell K.	76	Gay, Sylvia	31	Harris, Emory	30
Duncan, Paul	103	Geyer, Roger	36	Harris, Lawrence	62
Dunn, Martha	26	Ghent, William	47	Harris, Nancy	61
Dunn, Richard	65	Gibbs, Bobby Glen	71	Harrison, John	24
Durbin, Anna Jean	51	Gibbs, Brian	27	Harrison, Lenora	79
Durbin, Virginia	76	Gibson, Charles	49	Harrod, Evan	47
Durhan, Ernest	77	Gilbert, Effie	51	Harrod, Jo Nell	61
Durham, Kenneth	72	Giles, Fred P.	182	Hatfield, Alvin	40
Durrett, Marianne	76	Gill, Anna	182	Hatter, Hartese	61
Dyche, Margaret	55	Gill, Joseph	19	Hatter, Shannon D.	74
Doan, William	75	Gilliam, J. W.	72	Hawkins, Emogene	33
— E —		Ginn, Wilma	59	Haynes, Franklin	25
"E" Club	144	Girls' Hockey Team	118	Haynes, Woolery	60
Eagle, Carl	21	Goble, Sue	75	Haynie, Jacqueline	51
Easterday, Lt. Col. David M.	123	Goins, Joe Ann	71	Haynie, Mary Claire	65
Edwards, Anne	23	Goodlett, Shirleen	26	Hays, Glynnia	61
Edwards, R. A.	176	Goodrich, Kathleen	61	Heil, Dona	70
Elder, Ann	72	Goolman, Sophie	23	Heiss, Clarence	21
Elder, Robert	45	Gordon, Anne	73	Helm, Artis	29
Elliott, Denzil	60	Gordon, Billy	26	Helton, Glen G.	33
		Gover, Ann	19	Helton, James G.	55
		Gracey, Howard	22	Hembree, George H.	24

Henderson, Elizabeth	19	Johnson, Ronnie	73	Lillis, John	67
Hendren, William N.	33	Johnson, William	64	Lincks, Barbara	74
Hensley, William	73	Jones, A. C.	174	Linder, Jean	64
Hereford, David	79	Jones, Betty Blair	178	Lisle, Thomas	46
Herrdon, Thomas C.	182	Jones, Cynthia	79	Little, Don	64
Herron, Ross	19	Jones, Eugene	71	Little, Robert	76
Hertzer, Charles	32	Jones, Eleanor	46	Little Theatre Club	171
Hertzer, Margaret	23	Jones, Gwen	65	Lockard, Seldon	31
Hibbard, Douglas	73	Jones, Irwin	29	Locke, Betty Lou	21
Hickman, Phyllis Ann	75	Jones, Jack	22	Long, Paul	64
Hicks, Doris	72	Jones, John Paul	51	Looper, Billie Sue	34
Hieronymus, Clive	66	Jones, Karl	51	Lovett, Hubert	61
Hill, Barbara Jo	71	Jones, Mary Lou	63	Lowry, Donna Jean	72
Hill, William	32	Jones, Peggy	49	Lowry, Elizabeth	64
Hinton, Peggy	62	Jones, Robert	78	Lykins, Levodas	23
Hodges, Sue Ann	75	Joseph, Mattie	32		
Hoffman, Doug	64	Judd, Harold	45	— M —	
Hoffman, Roger	40	Juett, John S.	174	McAnallen, Thomas	62
Hogan, Judd	75	Justice, Kathleen	32	McAuley, Connie	50
Holbrook, Dolores	66	Justice, Willis	40	McBrayer, Joyce	62
Holbrook, Jesse	27			McBrayer, Paul	183
Holbrook, John	59	— K —		McClanahan, Bill	59
Holbrook, Mattie	35	Kappa Delta Pi	140	McClellan, Charles	64
Holbrook, Ruby	71	Kappa Pi	141	McComas, Bill	37
Holcomb, Billy	72	Kaufman, Faye	87	McConnell, E. P.	177
Holder, Harry	66	Kearns, Mary Elizabeth	60	McCord, Jane	63
Holderman, Joseph	49	Kearns, Shirley	49	McCowan, Delbert	77
Holland, Jack	77	Keen, Helen	66	McDonald, Margaret	67
Holland, Stanley	30	Keen, Leon	50	McDonald, Marvin	76
Hollis, Ann	61	Keene, Kathryn	62	McDonough, Maj. Robert J.	123
Home Ec. Club	145	Keene, William L.	183	McDowell, Ida	59
Homes, Norma	33	Keith, Charles A.	176	McGlason, Alvin	183
Hood, Gertrude	182	Keller, Francis	61	McGlone, Loraine	80
Hopp, William	182	Kelly, Alicia Ernst	34	McGowan, Helen	73
Hopper, Mary Lou	75	Kelly, Jack	73	McGuire, Monroe	19
Horan, Mary Elizabeth	54	Keltner, Jesse	78	McIlvaine, Alex G.	183
Hord, Asa Louis	78	Kenamer, L. G.	183	McIlvaine, Edith L.	177
Horn, Doris Ann	61	Kenney, Kathleen	29	McKamey, Donna	19
Horn, Mary Cecile	64	Kenney, Walt	48	McKee, Catherine	62
Hornsby, William	78	Kepler, Karl	37	McKinley, J. D.	65
Horton, Carol	59	Ketzner, Hannah	48	McKinney, George	59
Houchell, Saul	182	Kidd, Frederick	79	McKinney, John	47
Howard, Jean	62	Kidd, Roy	62	McKinney, Mary	183
Howard, Lurlie R.	30	Kidwell, Edgar	45	McLeaster, Anne	66
Howard, Richard D.	46	Kincer, Wanda	75	McPhail, Dorothy	71
Howard, Roger	78	Kittrell, Harold	30	McPherson, Dotty	66
Howard, William	74	Kirby, Havis	54	McNabb, Edgar	60
Howell, Thomas	79	Kirby, James	48	McQueen, Charles	45
Hubbard, Charles	78	Kirby, Thurston	40	McQueen, Earl	24
Hubbard, Claude	72	Kline, Henry	63	Maffey, Mary	72
Huddleston, Robert	52	Knigga, Patsy	65	Magruder, Betty	78
Hughes, Charles T.	182	Knowland, Donald	47	Mansfield, Harry R.	35
Hughes, Martin	23	Kolakowski, Alex	52	Marcum, Don	60
Huguely, Tevis	22	Kordenbrock, Aifton	22	Marcum, Doris	71
Hulker, Ann Ruth	60	Kraus, Peggy	74	Marcum, Milton	71
Hume, Catherine	34	KYMA	151	Martin, Elmo	49
Hume, Charlotte	60			Martin, Mae Belle	50
Humfleet, Beulah	39	— L —		Martenson, Milton	60
Humphrey, James W.	75	Ladenburger, Roger	72	Martin, Charles	75
Hurst, William	62	LaFuze, H. H.	183	Martin, Lester	36
Hussung, Florence	47	Lamb, Charles	45	Mason, Mary Anne	71
Hutton, Barbara	37	Lamb, Donald	64	Mason, Robert	55
		Lane, James	71	Massey, Kenneth	35
— I —		Lankford, Anita	77	Math Club	155
Industrial Arts Club	158	Lay, John	79	Mathews, Frank	49
Isaacs, Betty Jane	51	Lea, Elliott	63	Mathews, Wanda	77
Isaacs, George	30	Ledford, Linda	63	Mattox, Don	52
		Lee, Cora	183	Mattox, M. E.	176
— J —		Lee, Leamon	66	Mattox, Mary Lou	41
Jackson, Mildred	65	Lee, Norma Jean	42	Maupin, Betty Lee	63
Jackson, Ruy Horatio	61	Leeds, Martha	71	Marshall, Gayle	76
Jarboe, Margaret Jo	32	Lefebvre, Eugene	20	May, Martha Rose	26
Jenkins, Harold H.	25	LeFevers, Marty	75	Mayo, Betty	52
Jenkins, Polly Lou	73	Lemaster, Tommy	74	Meeks, Charlene	52
Jennings, Mabel W.	182	LeQuire, Harold	72	Melton, Clarence	71
Jeter, Annette	60	Lethgo, William	21	Metcalf, Robert	75
Jett, Don	71	Leveridge, James	65	Meyer, Thomas	32
Jewell, Robert	73	Lewallen, Egge	20	Milestone Staff	132, 133
Johns, Margy Gover	47	Lewallen, Norma	178	Miller, Charles	63
Johnson, Charles L.	35	Lewis, Clyde	183	Miller, Clarence	76
Johnson, Harold L.	76	Lewis, Doris Lee	46	Miller, Mrs. Lester	183
Johnson, Jacqueline	59	Lewis, Joyce	37	Miracle, Lenore	73
Johnson, Julia Ann	49	Lewis, Sue Carrol	76	Mitchell, Ted	48
Johnson, Glenn E.	50	Lewis, Peggy Ann	50		
Johnson, Lee	27	Likins, Robert	79		
Johnson, Marcella	28				
Johnson, Mary Ann	78				

Mitchell, Lawrence	60	Perry, Leo	36	Rodgers, David	35
Moberly, Jane	20	Perry, Ralph	77	Rogers, Evelyn	27
Moberly, Margaret	183	Peters, Norma	79	Rogers, Frances	67
Montgomery, Bobby	60	Pettit, Shirley	21	Rogers, Laura Lou	76
Moore, Clay	46	Phelps, Ann	76	Rogers, Roy	20
Moore, Clifton	62	Phillips, Evelyn	59	Rolph, Paul	59
Moore, Donald	59	Philpot, Joyce	72	Romard, Thomas	62
Moore, James	72	Photo Club	163	Romersa, Hank	63
Moore, Roger	26	Pickett, Norma	46	Roop, Harold	78
Moore, William	176	Pickett, William	59	Rose, Bobby	73
Moores, Anna	178	Pierce, Elizabeth	52	Rose, Jane	66
Moores, Burgoyne	39	Pi Omega Pi	138	Ross, Russell	63
Moores, Roy	30	Piper, Phyllis	77	Roth, Lawrence	55
Morehouse, Lee Roy	79	Points, Clara	178	Rowe, Mary Lou	66
Morgan, Farmer	22	Points, Robert	40	Rowlett, John	184
Morgan, Johnnie	37	Pollard, Edna	67	Rowlette, Keri	48
Morgan, Ray	23	Pope, Robert	51	Royalty, William	79
Morris, James	29	Potts, Carrie	178	Rubarts, Dean	71
Morrison, Ed	28	Powers, Pat	29	Ruffner, James	30
Mulcahy, Robert	62	Prater, Walter	25	Runyan, Hazel	25
Muller, Robert	77	Prather, Eleanor	59	Rush, Betty	72
Mullins, Aline Shelton	47	Prather, Martha	46	Rush, Ruby	184
Mullins, Clema Lee	75	Pratt, Angie	64	Russell, Gary	59
Mullins, Clyde	77	Presnell, Glenn	184	Russell, Jeanette	21
Mullins, Hubert	60	Pressley, Wayne	60	Russell, Walter	78
Mullins, Lena	47	Preston, Frances	62	Rutledge, Ralph	79
Murbach, Janet	183	Prichard, James	36	Ryan, John	36
Murphy, Betty Sue	30	Proffit, Charles	49	Rymer, Evelyn	52
Murphy, James	63	Progress Staff	134	— S —	
Music Club	147	Pugh, Ellen	184	Sagester, Marjorie	76
Music Council	157	Pullon, Ruth	73	Salisbury, Alice	76
Musick, Mrs. Stella	178	Purcell, Elzie	39	Salisbury, James H.	25
Myers, Donald	48	Purcell, Nina Joyce	52	Sallee, Lowell	71
— N —		Purdom, Leslie	73	Salyer, Darnell	33
Neff, Joan	59	Purkey, Patsy	47	Salyer, Irene	61
Nethery, Oral	28	Pyatt, Lois Jean	75	Sammons, Thomas	75
Nevins, Bonnie	45	— Q —		Samuels, Tom	184
Newby, Fannie	78	Quillen, Wilma	65	Sanders, Cecil	174
Newman Club	146	— R —		Sanders, Franklin	36
Nidiffer, Herbert	71	Raker, Chester	74	Sandlin, Mavis	76
Noe, Joyce	60	Raleigh, Blanche	61	Sawyers, Woodward	52
Noland, Clarence	77	Ramsey, Isaac	29	Saylor, Eugene	54
Noland, John	45	Raper, H. W.	184	Saylor, Harold	75
Norton, George	29	Rankin, Mary Ann	59	Schell, Ethel	52
Norvell, Kenneth	26	Readnow, Floyd	50	Schirmer, Mary Lou	67
— O —		Readnow, Julia	59	Schmitt, Charles	49
Odle, James	59	Redford, Donovan	52	Schneib, Anna A.	184
O'Donnell, Pres. W.F.	175	Redmon, Alice	47	Scholle, Joan	79
Off-Campus Club	154	Reed, Alma	178	Schoolcraft, Carolyn	73
Ogden, Betty	73	Reed, Elizabeth	61	Schram, Bonnie	63
Ogden, Dorothy	66	Reed, Jesse	59	Schuh, Doris	62
O'Hearn, Charles	54	Reed, Lillie	74	Schwertman, Ray	23
Osborne, Betty	45	Reed, William	79	Scott, Manie West	184
Otis, Betsy	61	Reeder, Cecil	34	Scriver, James	71
Owens, Gerald	79	Rees, Charlotte	34	Scull, Orville E.	123
Owens, Paula	74	Regenstein, Alma	184	Seale, Basil	54
Owens, Shirley Ann	62	Reynolds, Alice	73	Seale, John	77
— P —		Reynolds, Grace	74	Sebastian, Marie	67
Page, Richard	28	Rhinesmith, Betty Jane	75	Seeley, Jean	46
Palatunich, William	74	Rice, Dale	74	Seevers, Blanche	185
Park, Elizabeth	36	Rich, Joseph	21	Sells, Gay	76
Park, Walter	76	Richards, R. R.	184	Senters, Clyde	40
Park, William	23	Richardson, Charles	28	Searls, Bille	49
Park, Smith	184	Richardson, Harold	31	Sexton, Columbus	55
Parke, Billy	35	Richardson, Norma	45	Shackleford, Peggy	72
Parke, Helen	55	Richardson, Virginia	65	Shaver, Carroll	64
Parke, Jamie	63	Richey, Lester	31	Shaw, Earl	25
Parke, Thelma	73	Rickey, Nancy	71	Shell, Jack	65
Parke, Walker	79	Rickey, Patricia	50	Shifflett, J. D.	40
Parker, Jane	76	Rigby, Harold	184	Shockley, David	34
Parks, Joyce	22	Riggs, Ardelle	50	Short, Elvira	51
Parks, Jane	46	Riggs, David	77	Shugars, Jones	79
Parsons, Kitty	48	Riggs, William	35	Sidwell, Doris	65
Parsons, Marteen	79	Rigrish, Ernie	77	Sidwell, Mary Dott	30
Pasquale, Don	34	Riley, Anna	30	Sigma Lambda	139
Patrick, Merrell	71	Riley, Roy	54	Sigma Tau Delta	159
Patterson, Bayliss	123	Ritter, Jacquelyn	62	Sigma Tau Pi	143
Pavlovich, George	25	Ritter, Reuben	123	Siler, Enoch	23
Pearson, Helen	75	Ritter, Sylvia	74	Sims, Norma Faye	74
Pearson, William	28	Roberson, Eldred	65	Simpson, John	75
Pennington, Donald	73	Roberts, Roy	30	Simpson, Twila	61
Perkins, Roy	61	Robertson, Robert	31	Singleton, Carlos	50
Perry, Mrs. Hart	178	Robinson, Connie	59	Singer, Mary Lou	20
		Roby, Robert	74	Sisco, William	40

Sizmore, Carl	36	Taylor, Edith Ann	74	Watson, James	41
Skaggs, Jane	48	Teater, Ida Pearl	185	Watson, John	40
Skidmore, John	73	Teater, Patsy	67	Webb, Elizabeth	66
Slagle, William	38	Telford, Brown E.	185	Webb, Morris	52
Slusher, Chloe Jean	74	Tennis Team	115	Welch, Barbara	45
Slusher, Margaret Jane	48	Tevis, Norma	79	Wells, Helen B.	23
Slusher, Norma Jean	65	Thacker, Christine	19	Wells, Hobert	55
Smiley, Harry	74	Thomas, Dorothy	73	Wert, Imogene	29
Smiley, Ronald	77	Thomas, Kelly	32	Wert, James	31
Smith, Betty Jane	31	Thompson, Janie	65	Wesley Foundation Council	166
Smith, Betty Joyce	55	Thompson, Juanita	64	Wesley, Nancy	23
Smith, Betty Lou	59	Thompson, Robert	52	Wesley, William J.	27
Smith, Calvin	62	Thornton, David	76	Westminster Fellowship Council	167
Smith, Charles D.	35	Tiller, Kathleen	60	Whalen, Ralph	186
Smith, Charles Ed.	39	Tincher, Doris	31	Whitaker, Dudley	75
Smith, Charles M.	51	Tingle, Marion	64	Whitaker, Stewart	75
Smith, Claude	65	Tingle, Raymond	52	White, Beverly	55
Smith, Doris Lynn	63	Tipton, Ruby	76	White, Carl	48
Smith, Ella Ruth	35	Tipton, Wayne	73	White, Clyde	61
Smith, Georgeann	36	Todd, Laura Elizabeth	75	White, Jesse	39
Smith, Hiram	60	Tolson, Elmer	26	White, Jimmy	74
Smith, Roger	76	Tompkins, Gene	77	White, Kendall	73
Smith, James	67	Towery, Mildred	63	White, Lena	39
Smith, Joe Kelly	37	Track Team	116	White, Loy	29
Smith, Neville	54	Trail, Ben	76	White, Marion	63
Smith, Peggy	55	Trapp, Dixie	79	Whitehead, Mrs. Guy	186
Smith, Sidney	75	Treadway, Janice	76	Whitt, A. L.	186
Smithers, Mildred Anne	27	Trieschmann, Paul	20	Who's Who	135
Smyth, Wanda	63	Trivette, Jayne	63	Wickersham, A. L.	186
Snapp, Kenneth	62	True, Barbara	66	Wiedekamp, Sophie Juliane	73
Snowden, Hiram	54	True, Charles	76	Wiggins, Keith	48
Snyder Jimmie	77	Tsangeos, Nick	63	Wilburn, Shelby	75
Society of the Plow	150	Tully, Kathleen	25	Williams, Betty Jo	31
Saunders, Judith	75	Turner, Allie Jean	75	Williams, Carl	67
Southers, Ben	70	Turner, Athalee	21	Williams, Georgia	76
Spain, West	79	Turner, Barbara	66	Williams, Lester	54
Sparks, Hermon	28	Turner, Billy J.	35	Williams, Martha	20
Sparks, Rhoda Ann	76	Turner, Dan B.	27	Williams, Mary Martha	45
Sparrow, Louise	77	Turner, Grover	39	Williams, Mathias	76
Spencer, Glover	76	Turner, James R.	185	Williamson, Phyllis	77
Spencer, Roberta	41	Turner, John	38	Williston, Jerry	63
Spicer, Robert	52	Turner, Robert C.	37	Wilson, Andrew	52
Spires, Shirley	21	Turner, Robert M.	66	Wilson, Beverly	79
Spoonamore, Pat	60	Turner, Roosevelt	62	Wilson, Eleanor	66
Spurlock, Lowell	52	Turner, Suzanne	67	Wilson, Elizabeth	186
Staab, Richard	60	Turpin, Ben	62	Wilson, Harry	47
Stacy, Walter	27	Turpin, Billy Joe	32	Wilson, Harry D.	64
Stallard, Charles	71	Tyng, Mrs. Julian	185	Wilson, James	41
Stambaugh, Jimmy	38	— U —		Wilson, Kay	48
Stamper, Cleo	185	Utley, Donald	79	Wilson, Leland	186
Stanford, Marianna	65	Utley, George L.	31	Wilson, Nell	51
Stanford, Stanley	52	— V —		Wilson, Paul	25
Steil, Jennie Lou	43	Valentour, Joe	67	Wilson, Raymond	40
Stephens, Chester	36	Van Peursew, James E.	185	Wilson, Richard	50
Stephens, Isom	50	Varden, George	27	Wilson, Vivian	67
Stephens, Lavern	72	Vaught, Viola	64	Wingo, Germania	186
Stephens, Roger	71	Venable, Ella Jean	24	Winger, Darrel	55
Stevens, Alex	41	Vendl, Bill	50	Winn, James	58
Stevens, Ann Franklyn	46	Venettozzi, Vasile	185	Winn, Rhoda	72
Stevens, Burley	80	Venettozzi, Victor	26	Wireman, Paul	58
Stewart, Elmer	66	Viall, Blanche	78	Witmer, Clay	73
Stieren, Jean	67	Vickers, Curtiss	23	Witt, Coleman	63
Stigall, Harry	78	Vineyard, Chalmr	45	Witt, Glenn	28
Stinson, Lloyd G.	29	Vipperman, Claude	28	Wolfenbarger, Edford	55
Stocker, Ray	77	Virgin, Kathleen	24	Woodson, Dale	70
Stone, Nancie	64	— W —		Worek, Bernard P.	27
Stone, Thomas J.	185	W. R. A.	169	World Affairs Club	149
Storms, Lewis	61	W. R. H. O.	185	Wright, Jerry	76
Story, Virginia	185	Wagel, Wilma	79	Wright, Lorna Jean	67
Stovall, James	51	Walden, Betty Lou	73	Wright, Virginia	25
Strong, Guy	23	Walker, Marilyn	29	Wylie, Robert	75
Strong, William	39	Walker, Samuel	185	— Y —	
Strong, William R.	33	Walser, Jean	34	Yankey, Hazel	64
Stubblefield, William	19	Walters, Betty Jo	75	Yeager, Lowell	60
Sutton, Elizabeth Gene	71	Walters, James	39	Y.M.C.A.	162
Switzer, Karrol	71	Wampler, Harold	35	Younce, Mrs. W. C.	178
— T —		Ward, Marilyn	33	Young, Jerome	23
Tanner, Florence	60	Ward, Thomas	51	Young, Marlene	74
Tarter, Ruby	65	Ware, Archie	48	Young, Martha Sue	63
Tarter, Vertis	21	Warford, Harold	63	Young, Matthew	50
Tarvin, Warren	54	Watson, Carlyle	76	Young, Stanton	66
Taylor, Louise	21	Watson, Charlotte	186	Y.W.C.A.	162
Taylor, Clifton	77				

Acknowledgements

Printing by

MASONIC HOME JOURNAL

Engraving by

BUSH-KREBS COMPANY

Class Photos by

MACK HUGHES

Features Photos by

RU BEE





