

2-1-1965

The Kentucky High School Athlete, February 1965

Kentucky High School Athletic Association

Follow this and additional works at: <http://encompass.eku.edu/athlete>

Recommended Citation

Kentucky High School Athletic Association, "The Kentucky High School Athlete, February 1965" (1965). *The Athlete*. Book 106.
<http://encompass.eku.edu/athlete/106>

This Article is brought to you for free and open access by the Kentucky High School Athletic Association at Encompass. It has been accepted for inclusion in The Athlete by an authorized administrator of Encompass. For more information, please contact Linda.Sizemore@eku.edu.

THE KENTUCKY



High School Athlete

CLASS AAA STATE CHAMPION LOUISVILLE MALE



(Left to Right) Front Row: Ross, Hunt, Koons, Wiggington, L. Jones, Hehemann, Fisher, Phelps, P. Kuhn, Henry, C. Kuhn, Shrecher, Keehner, A. Jones, Woods. Second Row: Winn, J. Forrest, Fryrear, Atchison, Kemp, Ash, Sparks, Bowerman, Bryan, Secrest, Baker, Jordan, Meisburg, Harrison. Third Row: Riley, Rose, Hill, Durrett, Long, B. Nelson, Brown, Watkins, Ballard, C. Nelson, Crowder, Swain, Denny. Fourth Row: Miller, Collins, Thurman, Strange, Tolle, Webster, Gray, Brim, Koons.

Male 21—DeSales 0
Male 41—Atherton 6
Male 18—Paducah 0
Male 7—Flaget 2

Male 47—Central 0
Male 7—St. Xavier 6
Male 53—Shawnee 7
Male 21—Trinity 0
Male 49—New Albany 6

PLAYOFF

Male 27—Eastern 0

Official Organ of the
KENTUCKY HIGH SCHOOL ATHLETIC ASSOCIATION

February, 1965

Letter from the Commissioner

Lexington, Ky.
January 27, 1965

To The District Tournament Manager:

Will you please refer to your K.H.S.A.A. booklet which gives rules and regulations governing basketball tournaments. You should familiarize yourself with these rules, found on pages 27-35. Your special attention is called to the second paragraph of Tournament Rule VI-A-3, relative to the enrollment of your district coaches in the Kentucky High School Coaches Association.

The forms for your various reports are self-explanatory. The report of games should be mailed to the manager of the regional tournament not later than Monday, March 8. Send your financial report, your checked eligibility lists, and the second copy of the report of games to the Commissioner as soon after the tournament as possible. For your convenience, the following check list is given;

1. Invite member schools to your tournament AT ONCE, reminding each school to send each other member school in the district a COMPLETE preliminary list of players before February 1, and to send each other member school in the district a COMPLETE preliminary list of players before February 1, and to send you THREE copies of a final list one week prior to the district tournament. See Rule VIII.

2. Announce the time of drawings in your letter. See Rule IX.

3. At your meeting, conduct the drawings and select the officials. The state plan for division of tournament receipts is recommended. If any other plan is used, a majority vote of the participating schools must be obtained.

4. Your attention is called to the last paragraph of Tournament Rule V-A, which says: "An official shall not work a district or regional tournament in the district or region in which he resides." The following procedure has been established by the Board of Control in the selection of tournament officials under authority given in Tournament Rule V-A: (a) Each school represented at the meeting may submit the names of one or more officials. There shall be a minimum of eight names on the list of officials to be voted on. NO NAME SHALL BE MARKED OFF THE LIST. (b) Each school representative shall rank eight officials in the order of his preference, the first choice being assigned eight points, the second seven points, etc. (c) The tournament manager shall communicate at once with the highest ranking official or officials in the order of their rank. If the official who is

selected can not be reached during the day of the meeting, or if he is not available, the tournament manager shall attempt to employ the next official or officials on the list in the order of their selection. (d) If two officials are tied on points, the highest ranking official shall be determined by flipping a coin. (e) If none of the officials on the list is available the tournament manager shall have the sole responsibility of securing an official or officials for the tournament.

5. Tournament Rule XV now says: "The Board of Control is authorized to select, standardize, and purchase trophies for all district and regional tournaments and the cost of these trophies shall be borne by the respective districts and regions." The Board has contracted with the Gipe Sporting Goods Company, Owensboro, Kentucky, to supply all of the official K.H.S.A.A. district first place and second place basketball trophies for the 1965 tournaments, each trophy complete with the Association seal and engraving. Your trophies will be shipped to you prior to March 1.

6. It is the responsibility of the tournament manager to secure adequate police protection.

7. THE BOARD OF CONTROL HAS RULED THAT NOT MORE THAN TWELVE PLAYERS MAY BE IN UNIFORM FOR ANY ONE TOURNAMENT GAME, AND THAT OTHER SQUAD MEMBERS SHALL NOT BE ALLOWED TO PARTICIPATE IN WARM-UP EXERCISES. THIS BEING IMPLIED IN TOURNAMENT RULE XI.

8. Please ask your officials to designate the goals prior to the warm-up time for each game.

9. You will receive three copies of a final eligibility list from each school. Have one of these checked by the coach of each competing team, before his team plays, for the twelve players he will use in each game. Use only one list for checking players on each team since the other two copies may be needed by the regional and state tournament managers. Send the Commissioner all of these checked copies with your other reports. Send the two unchecked copies of eligibility lists of the winner and runner-up to the manager of your regional tournament, along with one copy of your report of games, not later than March 2.

10. It has been ruled that the 2:00 o'clock mentioned in Tournament Rule IV-B may be considered Eastern Standard time or 1:00 P.M. CENTRAL STANDARD TIME. This information concerning the starting

(Continued on Page Three)

The Kentucky High School Athlete

*Official Organ of the
Kentucky High School Athletic Association*

VOL. XXVII—NO. 7

FEBRUARY, 1965

\$1.00 Per Year

In Memoriam



John L. Foust

John L. Foust, eighty-eight, retired Superintendent of Owensboro City Schools, died in Owensboro on January 10, 1965, following a long illness. In April of 1917, when the Kentucky High School Athletic Association was organized, Mr. Foust enrolled the Owensboro High School, of which he was Principal, in the Association as a charter member. He was Secretary-Treasurer of the K.H.S.A.A. during the 1918-22 period, and was Vice-President in 1923-24.

Mr. Foust had been connected with the city school system for forty-five years until his retirement in 1947, having come to Owensboro in 1902 from his native Marshall County, where he had taught in a one-room school house from 1896 to 1902.

Prof. Foust taught commercial subjects in Owensboro High School from 1902 to 1910, and was O.H.S. principal from 1910 to 1921, when he was named superintendent of the Owensboro City Schools, serving for twenty-six years, when he retired. He was president of the Kentucky Education Association from 1927 to 1928.

Prof. Foust took an active part in all civic affairs. He was a member of the State Board of Certification of Public Librarians; president of the Carnegie Library in Owensboro; a member of the State Board of the Young Men's Christian Association; member and president of the Investigators Club; and

over a long period of years was Daviess County director of the March of Dimes campaign. He was chairman of the Area Council Committee on Scout Leaders' training; chairman of the official board of Woodlawn Methodist Church; and he served as a delegate to the Louisville conference.

During his active service in public education Prof. Foust served for a time on the KEA Legislative committee, and was a former president of the District Education Association.

Prof. Foust was a past president of the Owensboro Rotary Club. In his retirement he continued to take active part in the improvement and progress of Owensboro, until ill health forced him to the sidelines.

An Owensboro Junior High School was named in honor of the veteran educator, when in September, 1952, members of the Owensboro City Board of Education selected the name of John L. Foust for the then new Junior High School, located on what was then Crook Avenue, just south of 5th street. Later the City Commissioners changed the name of the street to Foust Avenue, out of respect for the local schoolman.

Honors continued to be paid to Prof. Foust when in November, 1958, the Library Extension presented to him a citation for his untiring efforts in behalf of public libraries of the state. He served for nearly forty years on the Owensboro Library Board, with most of those years as chairman, from which post he resigned several years ago.

Mr. Foust was born at Briensburg, Marshall County, November 19, 1876, a son of William M. and Christine Foust. He attended Southern Normal College (Western Kentucky State College), received his A.B. degree from University of Chicago, and his M.A. degree and special superintendent's diploma from Columbia University. Prof. Foust was married to the former Miss Georgia Conner at Calvert City, who preceded him in death about twenty years ago.

Surviving are two daughters, Miss Geneva Foust, Owensboro, and Mrs. Weldon Jones, Frankfort; one son, Wayne Foust, Owensboro; two grandchildren; Mrs. Martel Wightman and Mrs. Hugh Gilbert, both of Owensboro; and five great-grandchildren.

FEBRUARY, 1965

VOL. XXVII—NO. 7

Breathitt High School, (15) Prestonburg High School, (16) Morehead State College.

Published monthly, except June and July, by the Kentucky High School Athletic Association
Office of Publication, Lexington, Ky.

Entered as second-class matter in the post office at Lexington, Kentucky under the act of March 3, 1879.

Editor THEO. A. SANFORD
Assistant Editor J. B. MANSFIELD
Lexington, Ky.

BOARD OF CONTROL

President—Oran C. Teater (1964-65), Painstville
Vice-President—Don R. Rawlings (1961-65), Danville
Directors—Morton Combs (1964-68), Carr Creek; Don Davis (1963-67), Independence; Ralph C. Dorsey (1962-66), Horse Cave; Sherman Giehl (1963-67), Greenville; Preston Holland (1961-65), Murray; Foster J. Sanders (1962-66), Louisville.

Subscription Rate -----\$1.00 Per Year

From the Commissioner's Office

1965 District Tournament Sites

- | | |
|---------------------|------------------------|
| 1. Hickman County | 33. Boone County |
| 2. Lone Oak | 34. Covington Cath. |
| 3. Symsonia | 35. Newport |
| 4. Murray County | 36. Campbell Co. |
| 5. Crittenden Co. | 37. Harrison Co. |
| 6. West Hopkins | 38. Deming |
| 7. Trigg County | 39. Mason County |
| 8. Todd Co. Central | 40. Nicholas County |
| 9. Union County | 41. Frankfort |
| 10. Henderson | 42. Mercer County |
| 11. Sacramento | 43. University |
| 12. Owensboro | 44. Madison Central |
| 13. Hancock County | 45. Danville |
| 14. Leitchfield | 46. Memorial |
| 15. Beaver Dam | 47. Somerset |
| 16. Muhlen. Central | 48. London |
| 17. College | 49. Oneida Inst. |
| 18. Olmstead | 50. Knox Central |
| 19. Glasgow | 51. Bell County |
| 20. Metcalfe Co. | 52. East Main |
| 21. Taylor County | 53. Whitesburg |
| 22. LaRue County | 54. Hazard |
| 23. Elizabethtown | 55. Riverside Chr. Tr. |
| 24. Springfield | 56. Lee County |
| 25. St. Xavier | 57. Belfry |
| 26. duPont Manual | 58. McDowell |
| 27. Valley | 59. Flat Gap |
| 28. Eastern | 60. Morgan County |
| 29. Shepherdsville | 61. Montgomery Co. |
| 30. Shelby County | 62. Breckinridge Tr. |
| 31. Henry County | 63. South Portsmouth |
| 32. Owen County | 64. Raceland |

1965 Regional Tournament Sites

- (1) Murray State College, (2) Todd County Central High School, (3) Owensboro High School, (4) Leitchfield High School, (5) Western Kentucky State College, (6) LaRue County High School, (7) Louisville, (8) Henry County High School, (9) Campbell County High School, (10) Mason County High School, (11) Eastern Kentucky State College, (12) Danville High School, (13) Clay County High School, (14)

Certified and Approved Officials

Three additional officials have qualified for the Certified rating and one for the Approved rating since the list of these higher rated officials appeared in the January issue of the ATHLETE. They are: Certified — John B. Dotson, Gerald L. Gilbert, Vincent Zachem; Approved — Orville A. Kensler.

News About Swimming

The 1965 Class A State High School Swimming Meet will be held in Louisville on Friday evening and Saturday, February 26-27, at the Plantation Swim Club pool, 8609 Westport Road. There will be a division for boys and one for girls. There will also be two divisions for the smaller schools in the Class B State Swimming Meet scheduled to be held at the University of Kentucky pool, Lexington, on March 26-27.

Class A will include those high schools with an enrollment of 750 or more (grades 9-12), and Class B will include those schools with an enrollment of less than 750. Any school may enter a class above its classification.

All divisions will have eleven events this year. Individual contestants may enter three events, no more than two of which may be individual events. The events are: 200 Yard Medley Relay, 200 Yard Freestyle, 50 Yard Freestyle, 200 Yard Individual Medley, Fancy Diving, 100 Yard Butterfly, 100 Yard Freestyle, 100 Yard Backstroke, 400 Yard Freestyle, 100 Yard Breaststroke, and 200 Yard Freestyle Relay.

All diving will be in accordance with regulations given in the 1965 N. C. A. A. Swimming Guide.

Teams are limited to four entries in each event except the relays. A school may be represented by only one relay team. Girls may enter the meet only as members of girls' teams.

The Friday evening session in each meet will include all of the diving events for both boys and girls. Each finalist will give a demonstration dive during the final Saturday afternoon session.

Only those swimmers who qualify for the finals will be given expense allowances for transportation, lodging and meals, these allowances to be based on the State Track Meet allowances on these items.

K.H.S.C.A. Notice

Secretary-Treasurer Joe Ohr of the Kentucky High School Coaches Association calls to the attention of Principals, Athletic Directors, and Coaches that membership in the K.H.S.C.A. runs from March 1, 1965, to February 28, 1966. Two coaches in each school have their fees paid from district basketball tournament receipts. Other coaches should mail their applications, along with their fees of \$1.00 each, to Mr. Ohr, whose address is Irvine High School, Irvine, Kentucky.

Football Clinic

The Louisville Football Coaches Association will conduct its annual clinic, the Louisville Championship Football Clinic, in Louisville on April 8-9, 1965, during K.E.A. week.

Speakers on the program will be: Bob Hamilton, Kokomo High School, Kokomo, Indiana; Marvin Moorehead, Arlington High School, Columbia, Ohio; Tommy Owen, Montgomery Bell Academy, Nashville, Tennessee; Charles Kuhn, Louisville Male High School; Owen Hauck, Highlands High School; Jack Hall, Elkhorn City High School; Bill "Moon" Conde, Virginia Tech; and Trainer Ralph Berlin, University of Kentucky.

The first session of the clinic will be held at Trinity High School, St. Matthews, Kentucky, on Friday, April 9, beginning at 6:30 P.M. The Saturday session will be held in Monogram Hall, General Electric, Louisville, Kentucky, beginning at 8:45 A.M.

The tuition for each person in attendance, prior to April 1, will be \$4.00. It will be \$5.00 at the door. Advanced registrations should be mailed to Coach George Sauer, 3015 Curran Road, Louisville, Kentucky, 40205.

State Tournament Officials

As reported in the January issue of the ATHLETE, the Board of Control in its December meeting recommended to the Commissioner a new plan for the selection of State Basketball Tournament officials, to be used on an experimental basis in 1965. The plan, which was accepted by the Commissioner, is as follows:

1. The Commissioner will send the names of all certified officials to all K.H.S.A.A. principals.

2. Head basketball coaches must rank (8) officials from the list, who live in Kentucky.

3. Principals will send the ballots to the Commissioner who will tabulate them. Points shall be as follows: 8, 7, 6, etc.

4. The official who is top ranked by the coaches in each section (two regions) will officiate in the State Tournament. In case of a tie vote, the winner shall be determined by lot.

5. If an official receives the highest ratings by the coaches in two sections, the official who receives the next highest rating in the two sections shall also officiate in the State Tournament.

6. Assignment in the State Tournament will be the responsibility of the Commissioner.

7. The Commissioner will notify the elected officials.

8. If the official who is top ranked by the coaches in a section can not work, then the second ranked official will be selected.

Letter from the Commissioner

(Continued from Inside Front Cover)

time of the regional meeting should be given to your winner and runner-up.

11. Send Secretary Ohr of the Kentucky Coaches Association the list of district coaches to be enrolled in his organization and remittance for these, and send the Commissioner the various reports mentioned above as soon as possible.

12. Tournament Rule VI-A-3 provides that the district representative to the annual meeting may be allowed for expenses an amount not to exceed \$50.00. Since this is a maximum and not necessarily a fixed amount, the delegate should be asked to submit an estimate of the cost of his lodging, transportation, and meals because of his representing the district at the annual meeting.

Sincerely yours,
Ted Sanford

SUPPLEMENTARY LIST OF REGISTERED BASKETBALL OFFICIALS

If one telephone number is given for an official listed, it is the home phone number unless otherwise designated. If two numbers are given, the first number is that of the home phone.

Bennett, Jerry, oute 2, Box 323, Minford, Ohio, SP 9-2942, GL 6-4161, ext 275
Breeden, Charles W., Box 212, Mt. Washington, 538-4897, 451-0690
Collins, Jimmie N. Isom, 633-4653
Davenport, Robert B., Madison Ave., Danville, 236-2684, Burgin 748-5180
Dilks, Bernie, 6606 Hialea Court, Cincinnati, Ohio, 231-4027, 421-5700 ext. 591
Green, Walt, 102 Edgewood, Middlesboro, 248-4569, 248-1000
Holtzelaw, James R., 112 Elizabeth St., Versailles, 873-3892, 873-5211
Huelsemann, Gery, 5911 Morningside Drive, Fairfield, Ohio, 892-6129, 221-6000
Kilgore, Roger, South Shore, YE 2-3495, YE 2-3611
Lambert, Irvin, 5110 Rural Way, Louisville, GL 8-1948, 969-4718
Lloyd, Birt Leonard, 3610 Rear Branden, Huntington, W. Va.
Lloyd, David, 615 Elm St., Ludlow, 681-1119
Lynch, Terry J., 3412 Robb Ave., Cincinnati, Ohio
Miller, Roy J., 544 Whitcomb, Clarksville, Indiana, BU 3-6335, 361-2641 ext. 429
Redden, Robert B., 2404 Riddle St., Flatwoods, 836-3440
Sumner, H. Carl, 361 Hillcrest, Louisville, 895-1953, 895-4225
Wilcoxon, Billy, Box 546 Catlettsburg, 739-4331 (Bus.)
Zachem, Vincent, 1314 Main St., Shelbyville, 633-1861, 633-4869

The Flying Dutchman

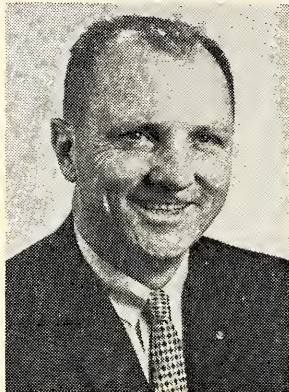
It looked more like March than January when the Dutchman walked into the K.H.S.A.A. office in Lexington. Assistant Commissioner Joe Billy Mansfield was getting the state basketball tournament tickets set up for the big schoolboy classic to be unfolded in Louisville very shortly. Ted and his staff must be months ahead with plans and arrangements to get this job done. "Mr. Average Fan" little realizes when he sees peak efficiency at the big operation of the K.H.S.A.A. that "skads" of preliminary work and planning were necessary to present the event successfully.

When youngsters from all over Kentucky converge on Louisville for the State Tournament to find social events and entertainment arranged for their enjoyment while the games are not in progress they, too, will little realize that the Hospitality Program required weeks of preliminary work and planning by civic minded Louisvillians to get this job done for them.

This Hospitality Committee, sparked by Foster Sanders, Raymond Wimberg, Russell Anderson, George Kincaid, Earl Ruby, Dean Eagle and K. P. Vinsel, assisted by dozens more, were already co-ordinating their efforts with the Commissioner before the basketball season was half over. This type of foresight indicates that the K.H.S.A.A. and the Tournament City are trying to provide wholesome fun for the "young visiting firemen" as well as around the clock supervision. Parents of these young Kentuckians appreciate this kind of interest in their sons and daughters.

Down Elizabethtown way those people chalked up a big score for their youngsters when they persuaded Hardin McLane to come to town to coach at Catholic High. It's hard to measure the great influence for good Hardin has exerted in this area. Now Coach McLane names one of the Corn Cob Pipe winners for the month. Glenial Thorpe is the unselfish citizen named by Hardin McLane for the honor because (1) Glenial is past-president of the Boosters' Club, (2) he is tireless in his service to kids, (3) he does not have a selfish bone in his body.

My old buddy, Coach Duke Burnett, of Cadiz, called for another honor pipe to be sent to Arthur Wallace who has put service to the youth of Trigg County at the top of his "Service Totem Pole." Art Wallace is fabulous not just because he's an outstanding school man, but because he goes that



The Dutchman

extra mile for the boys and girls he loves. Any time a kid is unable to get home after a Trigg County game, he knows Art Wallace will bed him down for the night. You're a Cob Pipe winner, Art.

Board of Control member Don Davis has always been one of the Dutchman's choice people. Before Don was elected to the Board he was one of the finest basketball officials to blow a whistle in northern Kentucky since the days of Edgar "Methusalah" McNabb.

A letter has come from Don telling about unique ash trays, made of K.H.S.A.A. stationary, which he and other Board members have received, made by kids, as expressions of gratitude for the sports program being provided them. Oran Teater, the Paintsville mountain climber, says that his tray is a conversation piece. Ask your board representative to let you see his.

Here's some ash tray irony - - - Don Davies doesn't smoke and neither do most of the other members. Cliff Fagan got a tray at Chicago and John Bunn got one in Colorado, and neither of these national figures smokes. Ben Franklin would be proud of these non-smokers because he once said, "Buy what thou hast no need of, and ere long thou shalt sell thy necessities." Next year the kids will honor you guys with unique malted milk glasses - - - That's their plans; no foolin'!

From all sections of the country the Dutchman is receiving reports that all of the new rules changes are well-received with one exception, that being the requirement that officials must notify players who com-

(Continued on Page Six)

Football Officials' Ratings On Sportsmanship Of K. H. S. A. A. Member Schools - 1964

SCHOOL	COACH				OTHER SCHOOL OFFICIALS				CROWD				TEAM			
	E	G	F	P	E	G	F	P	E	G	F	P	E	G	F	P
Anderson Co.	28	6	1	0	28	6	1	0	27	7	1	0	30	4	1	0
Atherton	37	7	0	0	35	11	0	0	36	8	0	0	39	6	1	0
Attucks	28	13	0	0	29	11	0	0	26	15	0	0	26	14	0	0
Austin-Tracy	20	5	0	0	22	2	0	0	21	4	0	0	21	4	0	0
Barbourville	25	0	0	0	23	2	0	0	22	3	0	0	22	3	0	0
Bardstown	27	10	1	5	28	14	0	1	30	11	2	1	29	13	2	0
Bath Co.	22	5	1	0	24	3	1	0	22	5	1	0	19	9	0	0
Beechwood	18	7	2	2	23	5	0	0	21	8	0	0	19	10	0	0
Belfry	21	7	1	0	22	4	0	0	21	5	4	0	23	5	1	0
Bell Co.	26	1	2	3	31	1	0	0	30	1	1	0	28	2	1	1
Bellevue	24	11	3	1	25	11	1	1	20	13	4	1	21	14	2	1
Berea	5	2	0	0	5	0	0	0	5	0	0	0	7	0	0	0
Bishop David	20	3	1	1	44	4	0	0	40	11	3	1	46	8	2	0
Boone Co.	27	8	1	0	34	2	0	0	26	10	0	0	29	4	3	0
Bourbon Co.	20	12	2	1	28	6	2	0	28	6	1	0	27	8	0	0
Bowling Green	27	17	8	2	41	6	2	0	37	12	0	1	42	8	0	0
Boyd Co.	17	17	6	1	26	12	2	0	18	16	2	2	18	18	3	1
Boyle Co.	24	9	1	0	25	2	0	0	20	10	2	0	32	11	1	0
Bryan Station	35	19	0	0	36	16	0	0	36	12	3	1	32	19	1	1
Burgin	17	5	1	0	19	4	0	0	19	3	0	0	17	5	1	0
Butler	30	7	2	7	32	6	0	0	28	12	1	0	26	11	3	0
Caldwell Co.	24	5	1	1	23	2	0	0	20	7	2	0	21	9	0	0
Campbell Co.	16	4	4	5	27	2	0	0	19	11	0	0	21	7	2	0
Campbellsville	31	6	0	0	32	3	1	1	26	7	3	2	28	7	1	0
Carrollton	25	9	2	0	24	6	5	0	22	11	2	0	24	10	1	0
Cattlettsburg	36	5	2	0	32	9	0	0	24	17	3	0	27	10	6	0
Caverna	20	3	1	4	17	6	0	0	16	9	0	0	17	7	0	0
Central	34	17	0	0	32	18	0	0	32	17	0	0	31	20	0	0
Christian Co.	23	5	0	0	22	4	1	1	25	3	0	0	22	5	1	0
Corbin	24	3	1	4	27	6	0	0	23	9	2	0	21	10	0	2
Crittenden Co.	31	3	0	1	29	3	1	1	23	8	2	1	22	11	2	0
Cumberland	30	4	0	0	32	2	1	0	31	2	2	0	30	3	1	0
Cumberland Co.	5	6	0	3	10	3	0	1	8	3	2	1	9	3	2	0
Danville	39	4	1	0	41	2	1	0	39	4	1	0	40	4	1	0
Davies Co.	20	13	1	1	25	9	0	1	22	12	1	0	22	11	1	1
Dayton	28	3	0	2	28	3	0	0	26	6	0	0	23	8	0	0
DeSales	38	12	1	0	38	13	0	0	40	10	1	0	40	11	0	0
Dixie Heights	27	13	0	0	32	7	0	0	27	12	0	0	30	9	0	0
duPont Manual	42	4	0	0	47	4	0	0	44	11	0	0	45	6	0	0
Durrett	32	12	2	0	36	11	0	0	34	11	0	0	33	13	0	0
East Main	40	9	8	0	46	4	0	0	44	7	7	4	47	7	3	0
Eastern	46	13	0	0	44	12	0	0	40	16	1	1	44	13	0	0
Elizabethtown	31	9	2	1	29	11	0	0	29	11	0	0	30	13	0	0
Elkhorn City	36	8	0	1	40	6	0	0	36	9	0	0	36	8	1	0
Emmence	15	8	4	0	27	7	1	0	19	6	2	0	20	8	0	0
Everts	40	2	0	0	39	3	0	0	37	4	1	0	39	3	0	0
Fairdale	34	10	3	0	32	12	1	1	33	13	1	0	32	15	0	0
Falmouth	20	4	0	0	21	2	0	0	19	5	0	0	14	9	1	0
Fern Creek	21	13	10	4	30	15	1	1	26	20	0	0	26	21	0	0
Flaget	38	11	2	0	40	10	1	0	41	8	0	0	43	9	0	0
Fleming Co.	37	5	1	2	40	4	0	1	39	4	1	1	37	6	1	2
Fleming-Neon	31	1	0	0	32	0	0	0	31	1	0	0	27	5	0	0
Fort Campbell	30	6	0	0	30	4	0	0	29	8	0	0	25	7	2	2
Fort Knox	32	6	1	3	30	6	2	0	30	7	2	1	30	10	0	0
Frankfort	20	11	6	5	26	14	2	0	23	19	0	0	12	24	4	2
Franklin Co.	35	6	1	0	35	4	1	0	36	4	1	0	38	3	0	0
Franklin-Simpson	31	5	0	0	31	4	0	0	28	6	1	0	29	6	0	0
Fulton	22	1	0	0	22	0	0	0	22	0	1	0	21	2	0	0
Fulton Co.	26	0	0	0	25	0	0	0	25	0	0	0	25	0	0	0
Gamaliel	19	9	1	0	14	12	0	0	13	15	1	0	14	1	0	0
Garrard Co.	18	4	3	4	21	5	2	2	17	5	2	5	18	9	1	1
George Rogers Clark	39	16	0	0	28	7	0	0	27	8	0	0	28	7	0	0
Georgetown	30	14	0	1	32	12	1	0	32	12	0	1	31	13	0	0
Glasgow	31	10	0	0	33	7	0	0	31	10	1	1	31	10	1	0
Greensburg	28	4	2	1	27	7	1	0	28	5	1	0	29	5	1	0
Hall	20	1	0	0	19	2	0	0	28	5	1	0	29	5	1	0
Harlan	30	0	0	0	29	1	0	0	28	5	0	0	25	4	1	0
Harrison Co.	29	7	2	5	31	5	1	1	30	6	1	0	28	5	0	0
Harrodsburg	26	14	0	0	29	11	0	0	29	9	2	0	26	11	2	1
Hazard	39	2	1	0	36	4	0	0	35	6	0	0	36	5	1	0
Hazel Green	26	1	1	0	24	0	0	1	21	7	0	0	21	7	0	0
Henderson	28	5	1	2	27	6	1	1	25	10	0	0	24	10	0	0
Henderson Co.	20	17	1	0	21	16	0	0	18	16	1	0	16	21	0	0
Henry Clay	43	9	0	0	41	8	0	0	37	12	0	0	39	12	1	0
Henry County	26	9	0	0	27	8	0	0	17	13	5	0	17	15	3	0
High Street	23	3	0	0	24	0	0	0	22	4	0	0	20	6	0	0
Highlands	32	8	0	0	37	6	1	0	31	13	3	1	33	9	4	0
Hiseville	20	8	0	0	22	6	0	0	14	14	1	0	19	9	0	0
Holmes	24	10	0	0	26	8	0	0	18	15	1	0	18	15	1	0
Hopkinsville	29	5	0	0	31	3	0	0	29	5	0	0	28	6	0	0
Irvine	26	2	1	0	25	4	0	0	25	3	1	0	22	7	0	0
Jenkins	36	3	1	1	37	3	0	0	36	3	1	1	29	3	1	0
Jessamine Co.	33	7	1	1	34	5	1	0	31	17	1	0	32	8	1	0
Ky. Mil. Inst.	38	1	0	0	37	2	0	0	34	5	0	0	34	5	0	0
Knox Central	22	2	0	0	24	0	0	0	21	3	0	0	21	3	0	0
Lafayette	36	6	0	0	35	8	0	0	36	5	0	0	37	5	0	0
LaRue Co.	17	10	2	0	18	7	4	0	17	10	5	1	19	11	3	0
Lebanon	25	10	1	0	26	8	0	0	24	12	0	0	25	11	0	0
Leslie Co.	20	5	0	1	21	4	0	0	17	6	1	1	17	6	1	1

Lily	20	5	0	1	25	1	0	0	22	3	1	0	19	6	0	0	0
Lincoln (Franklin)	20	3	2	0	0	21	1	2	17	5	1	0	19	3	1	0	0
Lincoln (Paducah)	8	0	5	0	0	5	0	0	9	1	0	0	8	2	7	0	0
Lincoln Institute	10	7	3	0	11	6	0	0	12	7	1	0	11	1	1	0	0
Lloyd Memorial	31	5	0	0	32	4	0	0	23	10	2	1	22	11	7	3	0
London	35	3	0	0	36	2	0	0	29	10	0	0	29	6	3	0	0
Louisa	12	10	8	3	24	9	4	1	17	12	3	1	19	18	1	0	0
Louisville Cty. Day	24	8	1	7	28	9	0	0	26	12	9	1	27	13	0	0	0
Loyal	29	4	8	0	29	4	0	0	28	4	0	0	30	3	0	0	0
Ludlow	26	6	0	0	26	6	0	0	20	12	0	0	21	9	2	0	0
Lynn Camp	15	3	0	0	16	1	2	0	14	2	0	1	15	2	2	0	0
McKell	32	6	1	2	36	5	0	0	21	16	0	1	23	15	0	0	0
M. C. Napier	32	6	1	2	36	5	0	0	35	0	0	0	35	10	1	0	0
Madison	34	13	6	2	41	10	1	0	39	10	1	1	40	13	1	0	0
Madison Central	23	12	0	2	24	10	1	1	23	11	0	2	24	11	0	2	1
Madisonville	28	11	1	0	29	10	1	0	27	9	3	1	24	11	4	1	1
Males	36	11	1	7	36	12	1	0	35	14	0	0	37	10	0	2	0
Mayfield	31	5	0	0	29	6	0	0	29	7	0	0	30	6	0	0	0
Mercer Co.	21	4	2	0	22	5	0	0	20	6	1	0	20	7	0	0	0
Metcalfe Co.	17	7	0	0	19	5	0	0	18	6	0	0	16	7	1	0	0
Middlesborough	29	3	1	4	29	4	0	0	24	3	4	2	25	8	0	0	0
M. M. I.	32	5	0	0	32	5	0	0	26	6	1	0	19	9	5	0	0
Morgan Co.	32	5	0	0	32	5	0	0	27	7	0	0	27	9	0	0	0
Mt. Sterling	30	7	1	1	31	7	1	0	28	10	1	0	29	8	1	1	1
Mt. Vernon	21	5	0	0	23	3	0	0	18	8	0	0	20	6	0	0	0
Murray	36	1	0	1	34	3	1	0	35	8	0	0	37	1	0	0	0
Newport	29	4	0	1	31	3	0	0	26	7	1	0	27	6	1	0	0
Newport Catholic	23	5	2	0	26	4	0	0	18	12	0	0	20	10	0	0	0
Nicholas Co.	24	12	2	4	23	11	4	4	23	11	4	4	28	9	3	2	0
North Hardin	29	8	0	0	27	10	0	0	26	9	2	0	29	4	4	0	0
Old Ky. Honor	40	9	0	1	40	9	0	0	35	3	1	4	40	9	0	0	0
Oldham Co.	29	10	0	0	31	8	0	0	29	8	2	0	30	9	0	0	0
Owen Co.	17	11	0	0	19	9	0	0	12	16	0	0	11	17	0	0	0
Owensboro	37	6	1	1	37	6	2	0	27	16	2	0	25	16	0	4	2
Owensboro Catholic	33	8	0	0	34	6	0	0	25	6	0	1	26	9	0	0	0
Paducah Tilghman	33	8	0	0	34	6	1	0	35	6	0	0	34	6	0	1	0
Paintsville	20	7	0	5	22	6	0	4	19	9	3	1	18	8	5	1	0
Paris	31	11	0	0	29	10	1	0	29	11	1	1	31	11	0	0	0
Park City	12	13	2	2	16	12	1	0	14	15	0	0	16	11	1	1	1
Paul G. Blazer	37	3	1	0	39	1	0	0	34	8	0	0	32	7	1	1	1
P. L. Dunbar	15	16	1	2	18	13	2	1	17	12	3	1	16	14	2	2	0
Pikeville	30	4	3	1	30	5	1	0	28	7	2	1	24	9	4	1	1
Pineville	29	0	0	0	29	0	0	0	29	0	0	0	29	0	0	0	0
Pleasure Ridge Park	40	11	0	0	36	15	0	0	31	14	3	0	32	16	16	4	0
Prestonsburg	27	7	4	3	33	7	1	0	25	7	5	4	24	9	4	5	0
Raceland	29	5	1	0	32	1	1	0	20	12	1	1	28	5	1	0	0
Rowan Co.	21	8	0	0	23	6	0	0	20	9	0	0	17	12	0	0	0
Russell	33	5	0	0	31	5	0	0	27	10	0	0	30	7	0	0	0
Russellville	50	0	0	3	45	4	0	0	40	4	0	0	38	6	6	0	0
St. Joseph	22	12	0	0	26	7	1	0	20	12	1	0	22	11	1	0	0
St. Xavier	43	11	2	4	46	12	1	0	42	16	2	0	49	11	0	0	0
Seneca	27	12	4	2	28	14	2	0	25	18	1	0	23	15	6	0	0
Shawnee	30	3	2	0	27	9	0	0	29	9	0	0	33	9	0	0	0
Shelby Co.	30	10	1	0	33	6	2	1	28	14	0	0	30	10	2	0	0
Shelbyville	43	8	0	1	38	7	1	1	38	6	1	2	40	9	0	0	0
Sayre	4	2	0	0	4	2	0	0	4	2	0	0	4	2	0	0	0
Shepherdsville	31	5	4	1	32	7	1	0	30	8	2	0	31	8	0	0	0
Somerset	29	5	0	2	28	4	0	0	27	4	4	2	28	7	3	0	0
Southern	25	19	4	0	35	13	0	0	33	16	0	0	30	17	1	0	0
Springfield	22	7	1	0	24	6	0	0	22	8	0	0	21	9	0	0	0
Stanford	21	15	0	0	19	16	1	0	14	20	2	0	16	19	1	0	0
Temple Hill	7	14	2	4	19	6	0	0	19	8	0	0	16	10	1	0	0
Thomas Jefferson	38	6	2	1	39	5	0	0	36	9	0	0	36	9	1	0	0
Tompkinsville	21	4	4	1	23	6	1	0	20	9	1	0	23	7	1	0	0
Trigg Co.	40	4	0	0	38	5	1	0	38	2	1	0	39	2	2	0	0
Trinity	25	14	4	3	43	11	0	1	33	7	4	1	31	10	3	3	1
Union Co.	29	11	0	1	28	11	2	0	26	15	0	0	23	16	2	1	0
Valley	40	7	2	0	40	8	0	0	39	14	1	0	31	15	2	1	1
Waggener	27	7	3	1	28	9	1	0	25	13	0	0	26	10	2	1	0
Wallis	27	3	0	0	25	4	0	0	25	5	1	0	26	2	1	0	0
Warren Co.	30	3	2	0	27	6	1	1	29	9	1	0	28	2	4	0	3
Western	27	9	3	3	28	13	1	0	22	17	3	0	16	18	3	4	1
Westport	20	19	4	4	27	16	2	1	21	21	2	2	20	22	3	1	1
Wheelwright	21	15	3	4	32	9	0	1	29	10	5	6	20	7	4	11	4
Whitesburg	29	6	5	1	32	8	0	1	27	9	2	3	25	10	2	4	4
Williamsburg	25	2	0	0	27	3	0	0	21	3	2	0	22	4	0	0	0
Woodford Co.	21	16	4	1	32	5	0	0	35	6	1	0	32	9	0	0	0
Wurtland	25	3	2	0	24	6	0	0	21	8	0	1	21	7	2	0	0

THE FLYING DUTCHMAN

(Continued from Page Four)

mit their fifth fouls. The objection to this comes mostly from officials.

Oldham County basketball official, Hubert Loudon, who is also a traffic police officer at 4th and Walnut in Louisville, says that most boys know when they are disqualified and more often than not have to be overtaken by the Official to tell them something they already know. Let's have your opinions, coaches!

The Dutchman is the National Chairman of the Game Administration Committee and must report to the National Basketball Committee relative to the administration of the game very shortly. Write what you think should be included in the report to: THE FLYING DUTCHMAN, P.O. BOX 36, JEFFERSONTOWN, KENTUCKY, 40029.

Every coach is a sculptor according to Goethe who said, "Life is a quarry, out of which we are to mold and chisel and complete a character."

Schools' Ratings On Football Officials

The following ratings were received on football officials registered with the K.H.S.A.A. during 1964-1965. The numbers following each name represent respectively the number of Excellent, Good, Fair, and Poor ratings given to the official.

Adams, Calvin K., 0-5-2-0; Adkins, James A., Jr., 0-6-0-0; Adkins, Wendell L., 2-1-0-0; Allison, Roy 2-6-0-0; Alston, E. Deedom, 1-5-0-0; Anders, Raleigh, 6-8-2-5; Anderson, E. W., Jr., 5-2-2-0; Atkinson, Charlie, 9-10-1-0;

Barbour, Morris H., 0-5-0-0; Barlow, Billy B., 13-5-0-0; Bartels, John, 1-5-3-0; Baughn, E. L., 4-3-0-0; Beck, C. Norman, 9-12-1-1; Beheler, Donald Stuart, 10-5-1-0; Bell, Clarence T., 2-10-0-0; Bennett, Howard, 14-2-1-0; Benton, James 2-3-1-0; Benzinger, Joseph, 4-4-1-0; Berger, John D., Jr., 3-0-0-0; Bero, James J., 1-0-0-1; Blackburn, Adrian, 1-11-1-0; Blackburn, Tennyson R., 2-1-0-0; Blankenbaker, Ken H., 0-0-3-0; Blanton, Homer, 8-2-0-0; Bocoock, Earl, 0-0-0-1; Bocoock, George Allen, 4-1-0-1; Boeh, Bill, 3-3-0-0; Boemker, Bob, 3-5-3-7; Bond, Jack C., 7-2-0-0; Borden, Phil, 2-5-0-0; Bostick, Lord M., Jr., 10-8-1-0; Bowman, E. G., 12-5-1-1; Boyles, Jerry F., 5-1-1-0; Brewer, Clyde U., 4-3-1-0; Bridwell, W. F., 1-2-0-1; Brizendine, Vic, 8-11-1-1; Brock, John H., 6-0-3-1; Brotzge, Maurice J., 7-15-1-0; Brown, Bill, 6-14-2-0; Brown, Herman G., 1-3-1-2; Brown, John W., 3-7-0-0; Bullock, Teddy, 13-5-0-0; Bunn, Gary L., 0-1-0-0; Burke, Dan, 2-2-1-0; Burke, Harry R., 13-7-1-0; Burkhart, James G., 4-1-1-0; Burman, Jack, 1-1-0-0; Burton, James E., 1-9-0-0; Burton, John 5-11-1-0; Butler, Joe M., 0-1-0-0; Byrd, Harry G., 1-2-1-0;

Cain, Paul D., 1-9-0-0; Caldwell, Charles M., 0-1-0-0; Calman, E. C., Jr., 4-6-2-0; Canaday, Jack Glenn, 0-1-3-0; Canaday, Ray B., 15-3-2-0; Canter, John N., 4-6-2-0; Carlson, David A., 12-4-0-1; Carr, Virgil Lee, 1-0-0-0; Carrico, John, 4-0-1-1; Carroll, James L., 1-6-0-0; Cassell, David F., 1-4-0-0; Cathey, Gene, 9-1-0-0; Cecil, Morris A., 8-11-0-0; Chinn, Ralph, 5-2-2-2; Cisco, Robert N., 2-9-0-2; Clark, Maxie B., 6-11-0-0; Clemmons, Sam, 7-3-2-2; Clouse, Veryl R., 3-2-0-0; Clusky, Joe, 1-4-0-0; Cole, Harold, 11-7-1-1; Cook, Jack W., 2-1-0-0; Cook, Walter E., 7-0-2-1; Corea, Frank, 1-1-0-1; Corrao, Philip J., 0-0-3-3; Cowan, Robert L., 2-1-2-0; Cox, Jerry H., 0-1-0-0; Craft, Albert B., 6-10-4-0; Craft Bill, 3-12-2-1; Craig, Randy, 0-1-0-0; Criniti, Frank, 1-0-0-0; Crinity, Arnold, 1-0-0-0; Cullen, Charles E., 1-4-0-1; Culp, Willard E., 10-5-0-0; Current, Ellis Ray, 8-9-1-0; Curmutte, James R., 2-1-0-0;

Dahlander, Ward M., 8-5-2-1; Dallman, James W., 0-8-0-1; Daniel, Ernest H., 1-2-1-1; Davis, Clyde E., 5-2-1-2; Davis, Curtis, 4-3-5-0; Davis, Glenn E., 1-0-0-0; Davis, Ralph C., 1-0-0-0; Deaton, Daniel E., 1-4-1-0; DeMuth, Paul E., 5-9-1-0; Denton, Charles, 0-10-2-0; Denton, William Joseph, 1-0-0-0; Detenber, Gene, 6-9-0-1; Deutsch, T. C., Jr., 1-1-0-0; Dial, Charles R., 1-0-0-0; Dial, Jack W., 1-1-0-0; Dixie, Cornelius, 2-8-0-0; Dizney, Alan, 0-2-0-1; Doll, Louis E., 0-3-0-0; Dorsey, James, 1-3-0-0; Downey, Robert F., 2-0-0-0; Drake, Richard R., 5-11-1-1; Duff, Earl, 0-1-0-0; Durkin, Jack, 4-2-0-0; Durman, Mahlon R., 1-0-1-0;

Edelen, Ben R., 5-3-0-0; Edwards, David H., 1-1-0-0; Elliott, Carroll L., 4-12-2-0; Ellis, Johnny, 0-13-0-1; Elovitz, Carl, 14-6-1-0; Ernst, Edward R., 8-4-1-0;

Fallon, Robert J., 2-2-1-1; Fandrich, William, 10-1-0-0; Farish, Merlin J., 1-2-2-0; Faust, Jack, 12-12-0-0; Feix, Al, 4-1-0-0; Fenimore, Clarke E., 0-2-0-0; Ferguson, Jesse S., 1-0-0-0; Fey, Allen, 5-2-1-0; Fields, Ronald M., 6-2-1-0; Fish, Leland G., 6-1-0-2; Fletcher, John L., 0-1-1-1; Florence, Robert H., 7-4-1-0; Flowers, Herschel H., 1-2-2-0; Flynn, Bobby, 3-5-3-0; Forbes, John W., 6-2-0-3; Fortney, Robert L., 7-4-0-0; Foster, Berryman E., 5-1-0-0; Foster,

J. W., 4-9-0-1; Fraley, Bill, 2-10-0-0; Franklin, James A., 2-4-3-0; Frazer, Tom Roe, 0-3-0-0; Fruit, William E., 4-6-1-0; Fryrear, William P., 9-9-2-1; Fucci, Dominic A., 9-4-0-3; Fugate, E. Hugh, 7-3-1-2; Fuller, Wilton, 2-1-0-0; Funkhouser, Roy A., 8-3-4-0;

Gahuk, Walter M., 2-1-3-1; Gettler, John F., 14-2-0-0; Gillum, Jim, 3-1-0-0; Golden, Billy Joe, 16-4-0-1; Gour, Bob, 2-1-0-0; Grace, Charles K., 3-1-0-1; Grace, H. E., Jr., 5-5-1-0; Graham, James, 1-1-3-5; Greene, Paul Dutch, 5-5-1-3; Greenoe, Richard H., 1-2-1-0; Grieco, Joseph R., 1-4-0-0; Griggs, John M., 8-5-1-2; Grunstein, Sam, 14-16-2-0;

Hadden, Newell P., Jr., 8-10-0-0; Haffey, Stan, 3-1-0-0; Hagan, Joe, 11-6-1-0; Hagerman, Bart, 2-6-1-4; Hagy, Harold J., 2-0-0-0; Hall, Henry N., 3-10-2-1; Hall, Richard, 1-2-0-1; Hanes, Edward C., 12-7-0-0; Harris, Gene, 2-4-1-0; Harris, Jerry, 5-3-0-0; Harris, John C., 4-2-1-3; Harris, Mickey E., 0-3-0-0; Harris, Russell B., 3-12-1-1; Hatfield, Gene E., 9-2-0-0; Hawkins, Robert W., 7-5-0-0; Hawkins, Will A., 2-1-0-0; Hedge, David W., 4-9-1-0; Heinold, F. Thomas, 3-1-0-0; Heinze, Frank, 20-6-0-0; Heinze, John G., 18-6-1-0; Heitzman, Warren E., 0-1-0-0; Hellard, George D., 0-2-0-0; Henderlight, Phil R., 0-3-1-0; Hendon, L. J., 9-4-0-0; Hicks, Lloyd, 1-1-1-0; Hill, Earl F., 10-13-1-0; Hofstetter, Joe, 4-0-0-1; Hogan, Cleo C., Jr., 1-1-2-1; Holbrook, William H., 3-1-0-0; Holbrook, William M., 4-5-4-2; Holeman, D. Fletcher, 8-8-2-0; Hollingsworth, Ralph D., 6-1-1-0; Holman, S. T., 1-10-2-0; Howerton, Jack, Jr., 5-13-1-0; Huber, Carl W., 1-9-0-1; Hughes, Paul P., 0-12-1-0; Hughes, Robert E., 5-8-0-1; Huiet, Fred, 3-2-0-0; Huston, Roderick, J., 1-1-0-3; Hynson, Fred R., 4-7-3-1;

Idol, Billy Joe, 7-9-1-0; Idol, Lloyd, Jr., 1-0-0-0; James, Gene, 1-0-0-0; Jarrell, Frank W., 3-2-0-0; Jenkins, Kean, 7-12-1-0; Jennings, Michael S., 2-2-0-0; Johnson, Harry A., Jr., 44-0-0; Johnson, Stan, 2-9-2-0; Jones, J. Carl, 9-8-1-1; Jones, Paul, 0-4-0-0; Jones, William A., Jr., 10-5-1-0; Junker, Edwin, 1-0-0-0;

Kallaher, Jim, 2-5-1-0; Karr, Don, 5-5-0-0; Kathman, Bernie, 1-1-1-0; Kauffman, Victor C., 2-6-2-0; Kelly, Victor B., 1-2-0-0; Kemper, Russ, 0-1-0-0; Kercher, Norman L., 5-6-2-2; Kerr, Kenneth, 6-8-0-0; Kimble, Frank, 2-0-0-0; King, Allen V., 2-8-0-0; Kraesig, Charles, 7-8-1-1; Kraft, H. Nellis, 1-8-1-1; Kratzenberg, Ralph, 1-1-0-0;

Lally, James J., 3-3-0-1; Lambert, Irvin, 10-7-0-0; Lancaster, Morris B., 7-7-1-0; Lange, William E., Jr., 5-7-1-0; Lankert, Norman E., 4-0-1-0; Lavender, Fred C., 2-0-0-0; Lawson, Leland, 3-3-0-0; Leahy, Pat, 2-11-0-1; Ledbetter, Paul M., 0-9-0-0; Lee, Charles J., 0-1-0-0; Lenahan, Thomas F., 12-9-2-0; Lewis, Richard Q., Jr., 1-3-0-1; Liber, James, 0-30-0; Liber, Michael, 0-3-1-0; Lindon, Bob, 8-6-2-0; Lingo, Henry E., 5-6-0-1; Locke, William F., 0-2-0-0; Logan, Eli, 0-2-1-1; Lotz, Robert W., 1-8-0-0; Lowe, Gene, 9-10-1-1; Lowe, Stan, 12-11-1-0; Lusby, George, 2-11-2-1; Lutz, Joseph C., 2-5-1-1;

McCartor, Bobby G., 5-5-0-0; McCollum, Bob, 5-0-0-0; McComas, Michael E., 0-3-0-0; McConachie, B. E., 3-8-0-0; McCowan, Connell, 2-2-0-0; McDougal, Alf, 2-5-0-0; McFadden, Jimmie, 8-9-1-0; McGehee, Gordon, 7-11-0-0; McGlasson, Gene, 3-8-2-0; McKenzie, Robert L., 1-1-0-0; McLane, Al, 2-6-1-0; McLemore, Jack T., 3-6-0-0; McNamee, Jack, 5-2-0-0; McPeck, Talmadge, 3-5-2-0; Madon, Robert L., 6-2-1-1; Mcgruder, Earl, Jr., 2-6-2-0; Makepeace, William H., Jr., 1-0-0-0; Marsili, Lee, 2-3-0-1; Matarazzo, S. M., 1-1-1-0; Matthews, Billy D., 6-2-1-0; Mattingly, Charles, 1-5-0-0; May, E. B., Jr., 25-7-2-0; Mayhew, William M., 4-13-1-0; Mayo, Henry L., Jr., 2-6-0-0; Maynard, Joe E., 2-1-0-0; Mays, Raymond K., 1-0-0-0; Meeks, Jack, 10-10-0-1; Melmige, James, Jr., 3-2-0-0; Mercke, Frank R., 13-15-2-3; Mercker, George E., 4-5-1-0; Mickey, Elbert W., 2-0-0-0; Middlebrooks, Chuck, 1-10-0-0; Millerhaus, Bill, 3-2-0-0; Minta, John H., 14-0-1; Mitchell, Emmett D., 8-10-2-0; Mitchell, Vyron W., 4-1-0-0; Moellering, Louis H., 8-5-0-0; Moody, William R., 7-1-0-0; Mooneyhan, James H., 1-2-0-0; Mordica, William A., 8-1-0-0; Morgan, Richard, 2-2-0-0; Morris,

Gene L., 2-3-0; Morrissey, Rockne, 2-6-0; Morse, Richard K., 5-7-0; Moss, Howard A., 9-2-0; Moss, James W., 5-12-0; Mouser, H. D., 5-7-0; Mullins, B. E., 2-5-1; Muntan, Peter J., 3-10-4; Murray, Thomas, 8-8-1-0;

Nassida, Frank R., 0-1-0-0; Neal, Gene, 17-6-0-0; Noel, Donald L., 0-1-1-0; Noland, Douglas, 9-6-1-1; Nord, Bertrand J., 7-4-0-3; Nord, Ed., 5-9-0-0; Nord, Gilbert T., 7-6-0-0; Norwood, Thomas R., 3-2-0-0;

Omer, Harold G., 1-3-0-0; O'Nan, Norman, 6-4-0-0; O'Neal, Bud, 7-10-1-0; Osborne, T. D., 4-12-0-0; Overby, H. E., 5-3-1-0; Owens, Charles C., Jr., 3-1-0-0; Owens, R. L., Jr., 2-0-0-0;

Palmer, Carl A., 3-0-0-0; Parker, Billy E., 7-6-3-0; Parsley, Clyde E., 11-3-0-0; Pate, Lloyd W., 7-1-1-0; Peecher, W. Lloyd, 0-1-0-0; Peeno, Harry R., 5-9-3-1; Powell, Logan G., 7-12-0-1; Powers, Tom, 1-4-2-0; Prather, Wilbur, 0-1-0-0;

Rapp, Bill, 2-0-0-0; Raque, Ronald, 2-0-0-0; Ray, Bob, 6-2-0-1; Ray, Shirley G., 0-3-2-0; Reddington, Jim, 1-12-1-0; Reece, Fred, 15-6-1-0; Reed, Gordon, 10-5-0-0; Renfro, John E., 2-1-2-0; Rentz, Thomas W., 1-1-0-0; Riggins, Jason M., 1-1-0-0; Riggs, William T., 6-6-3-0; Ring, Bill, 3-3-1-7; Robinson, Don L., 7-2-0-1; Rodgers, Tom H., 4-9-2-0; Roettger, W. H., 8-3-0-1; Rolph, Harold J., 3-0-0-0; Rose, Lee H., 4-8-3-1; Ruddle, Guy R., 12-11-2-0; Rudolph, Fred, Jr., 8-8-2-0; Russell, Charles B., Jr., 9-2-0-0; Russell, Gary E., 0-7-0-0; Russell, Joe, 8-10-1-0; Russman, Godfrey F., 5-2-1-1;

Sacra, Gresham, 7-7-3-0; Sanders, Mel, 10-5-1-0; Sapp, Edward, 5-11-1-0; Schad, Jim 1-2-0-0; Scharfenberger, Irv. T., 0-1-0-0; Schiering, Jack H., 0-1-0-0; Schlich, Paul E., 4-5-4-3; Schmitt, K. F., 6-3-0-0; Schmitt, Paul E., 3-8-0-0; Schuble, Charles E., 1-3-2-0; Schwetschenau, Paul, 1-6-2-1; Scott, Bill 13-3-1-0; Seale, William E., 3-11-3-0; Sellman, John B., 5-5-1-0; Selvy, Curt, 12-8-0-2; Shanks, Thomas E., 4-6-1-0; Shaw, Earl, 2-0-0-0; Shaw, John, 10-2-2-0; Shewmaker, Wayne, 3-2-2-1; Shirley, Michael D., Jr., 0-1-0-1; Showalter, John, 2-10-3-1; Simpson, Felix D., 1-1-0-0; Sloan, Walley, 9-15-2-0; Smith, David C., 2-9-1-1; Smith, Edgar J., 6-6-2-0; Snook, Patrick, 2-5-0-1; Snyder, Gus, 3-7-3-0; South, Stanley Parks, 6-0-0-0; Sowers, William R., Jr., 1-5-1-2; Speck, Mike, 0-6-2-0; Spencer, H. Edward, 2-3-0-0; Staten, Joseph B., 2-6-0-0; Steele, Charles, 2-1-0-0; Stephens, Herbert D., 2-1-0-0; Stephenson, Harry S., 4-0-0-0; Stevens, William D., 6-13-0-0; Strain, Richard P., 6-4-1-1; Strong, Arnett, 4-0-1-1; Sucietto, Richard, 2-2-0-0; Sullivan, A. G., 1-0-0-0; Sullivan, Don Chris, 14-3-3-0; Swarts Joseph, 0-2-0-0; Swinford, John, 7-4-1-2;

Tackett, Jay, 5-10-1-2; Taylor, Dennis H., 9-1-2-0; Tehan, James, 1-0-0-0; Thomas, Charles, 4-0-1-0; Thomas, Frank M., 1-5-0-0; Thomas, Raymond E., 4-3-0-0; Thompson, Jack, 22-12-1-0; Thompson, Jack F., Jr., 3-1-0-0; Thompson, Ralph 3-0-0-0; Thompson, Tom, 0-1-0-0; Timmering, George E., 2-2-0-1; Trautwein, Jim, 4-9-0-0; Treas, Joe W., 3-5-1-0; Trunzo, Nick, 4-4-0-0; Tussey, George, Jr., 6-4-0-0;

VanHoose, Jack D., 2-6-0-0; Vankirk, Alva S., 2-4-2-1; VanMeter, David G., 3-10-1-0; Vaughan, Dick, 3-9-4-0; Vennari, Paul 2-0-0-0; Vennell, Robert H., 2-3-0-0; Vinciguerra, Phillip, 3-2-0-0;

Wagner, James L., 1-4-1-1; Waide, Harry Doyle, 5-5-0-1; Walker, Julian R., 11-3-0-1; Walker, Paul R., 13-7-0-0; Waller, Bobbie E., 8-12-0-0; Wanchic, Nick, 6-11-1-2; Warfield, Jim, 0-2-0-1; Warren, Kenneth A., 4-10-1-0; Washer, Stanley, 2-4-3-0; Watts, Shirley R., 9-10-0-1; Weaver, Clyde Ivan, 1-0-0-0; Weber, David, 1-12-1-1; Welch, Bill 3-4-1-0; Welch, J. D., 5-3-0-2; Werkowicz, Jack, 3-2-1-0; Wermeister, Jack, 0-1-5-0; Wheeler, Mel A., 5-0-0-1; White, James, 10-4-0-2; Wigginton, Al, Sr., 0-1-1-5; Willey, Harold L., 3-0-2-0; Williams, Bert O., 0-2-1-0; Williams, Roy E., 3-13-1-0; Williams, James H. 0-1-0-0; Willis, Donald A., 1-10-0-1; Wilson,

John Pope, 1-1-3-0; Wilson, Louis O., 9-10-1-2; Wise, Billy V., 11-7-1-1; Wise, Jack, 13-7-0-0; Womack, William H., 1-0-0-0; Wray, Robert F., 3-1-0-0; Wyatt, William Jack, 2-0-0-0;

Zaranka, Benny J., 10-5-0-2; Zehner, Albert, 0-3-0-0; Zimmer, Tom, 5-8-2-1.

MINUTES OF BOARD MEETING

The Board of Control of the Kentucky High School Athletic Association met at the Kentucky Hotel, Louisville, on Saturday morning, January 23, 1965. The meeting was called to order by President Oran C. Teater at 9:15, with all Board members, Commissioner Theo. A. Sanford and Assistant Commissioner J. B. Mansfield present. The invocation was given by Preston Holland.

Preston Holland moved, seconded by Sherman Gish, that the reading of the minutes of the December 19th meeting be waived, since members of the Board had received copies of these minutes. The motion was carried unanimously.

Sherman Gish moved, seconded by Don R. Rawlings, that the following regulations concerning fees for the regional basketball tournament officials be adopted: The official shall receive a fee of \$25.00 per game and a transportation allowance of 8 cents per mile for all necessary travel. In the event that it is necessary for the official to remain overnight at the tournament site, he shall be paid an additional \$10.00 per day for lodging and meals. The motion was carried unanimously.

Ralph C. Dorsey moved, seconded by Preston Holland, that the Commissioner be authorized to set the dates and determine the sites of spring meets and tournaments. The motion was carried unanimously.

There was a general discussion of possible new proposals to be submitted by the Board of Control to the forthcoming 1965 Delegate Assembly of the Association. Action on the proposals was deferred to a later meeting.

Don R. Rawlings, Chairman of the Retirement Committee, discussed the terms of retirement contracts for Commissioner Sanford and Assistant Commissioner Mansfield which he and the members of his committee had prepared. Messrs. Sanford and Mansfield stated that the terms of the contracts as drawn were satisfactory to them. Don R. Rawlings moved, seconded by Foster J. Sanders, that President Oran C. Teater and Vice-President Don R. Rawlings be authorized to sign for the Board as party of the first part the contracts which the Retirement Committee had prepared for the Com-

EASTERN — CLASS AAA FINALIST



(Left to Right) Front Row: Glenn Waltz, Vernon Hodge, Jim Hildebrand, Terry Holloway, Scott Wallace, Jim McLallen, Jim Swetman, Ron Foreman, John Keebler, Jim Costanzo. Second Row: Ass't Coach Dick Young, Ass't Coach Jack Roberts, Jim Thornton, Carl Kah, Mike Jones, Kenny Young, Rick Keiser, Glenn Drosche, Jack Funk, John Nickles, Mike Childers, Ron Owens, Ted Dickerson, Coach Charles Hord. Third Row: Roland Montgomery, James Dearner, John Pope, Paul Watson, Alex Russell, Matt Haaga, Larry Watson, Kerry Goodall, Bubba Green, Plynard Cunningham, Rich Watson, Coach Jack McGuire.

missioner and Assistant Commissioner. The motion was carried unanimously.

The Commissioner reported that there might be a few ties in the district basketball tournament balloting which was to end at midnight, January 25. Ralph C. Dorsey moved, seconded by Don R. Rawlings, that the Commissioner be given authority to break any ties in the district tournament balloting. The motion was carried unanimously.

The Commissioner reported that he had signed a contract with WAVE-TV to telecast the final game of the State Basketball Tournament, and that two other stations, one in Lexington and one in Paducah, would take the game from the Louisville station.

The Commissioner read certain correspondence which he had received from Executive Secretary Cliff Fagan of the National Federation concerning the National Football Foundation and Hall of Fame. The Commissioner stated that the matter involved was whether or not a Kentucky High School athlete receiving the Football Hall of Fame Award would be in violation of the Awards Rule of the Association. He stated that he had determined that the player receives only an illustrated certificate, and that the scholar-athlete's school, not the boy, receives the plaque. The Commissioner further stated that the qualifications for receiving the award are: (1) outstanding football ability

and performance, 2) outstanding academic application and performance, 3) and outstanding school leadership and citizenship. He recommended that the Board of Control approve the Football Hall of Fame Award as complying with the provisions of K.H.S.A.A. By-Law 41. Don R. Rawlings moved, seconded by Morton Combs, that the recommendation of the Commissioner be accepted and approved. The motion was carried unanimously.

The Commissioner presented a request from Secretary-Treasurer Joe Ohr of the Kentucky High School Coaches Association for sanction of K.H.S.C.A. All-Star football and basketball games to be played in 1966 and 1967. Sherman Gish moved, seconded by Preston Holland, that the K.H.S.C.A. All-Star football and basketball games for 1966 and 1967 be sanctioned. The motion was carried unanimously.

It was the opinion of the Board members that an additional meeting of the Board should be held prior to the State Basketball Tournament, and it was decided that this meeting should be held in Lexington on February 19-20.

Sherman Gish moved, seconded by Morton Combs, that all bills of the Association for the period beginning December 19, 1964, and ending January 22, 1965, be allowed. The motion was carried unanimously.

There being no further business, the meeting adjourned.

HOSPITALITY COMMITTEE

The following events and functions of the Hospitality Committee in connection with the State High School Basketball Tournament will be of interest to tournament visitors:

DANCES will be held in the Convention Center (formerly the Armory at 6th and Walnut Street) on Thursday and Friday nights, March 18 and March 19 from 10:30 P.M. to 1:00 A.M. The admission price is \$1.00 per couple or individual.

MOVIE — A special movie will be shown at the Kentucky Theatre on Thursday, March 18, beginning at 11:00 P.M. The price per ticket is 50c for each student having his or her identification card. These identification cards must be presented at all events.

THE RECREATION CENTER (West Wing of the Fairgrounds) will be open to all students for free basketball and tennis daily.

INFORMATION CENTERS — Desks will be set up and manned at both the Kentucky Hotel and Freedom Hall at the Fairgrounds. Students may register for all the hospitality events at either the Kentucky Hotel or Freedom Hall Information Centers, but coaches may only register at Freedom Hall Information Center. They must show their identification cards and have the names checked off the list of coaches which will be provided by the K.H.S.A.A.

HOSPITALITY ROOM at Freedom Hall for coaches, referees, school principals and officials will be opened daily, 30-minutes before game time. All who will be eligible to enjoy the Hospitality Room should come prepared with their identification cards from the various associations, etc., as two uniformed attendants will be on duty at the door to expedite admittance to the room.

PRACTICE ACCOMMODATIONS FOR TEAMS — Principals of coaches desiring practice accommodations may phone or write to Louisville Male High School and make arrangements with Prin. Foster J. Sanders, for use of various Louisville gymnasiums.

STUDENT IDENTIFICATION BADGES — All students, in order to participate in the entertainment features of the Hospitality Program and receive special prices, must have identification badges which may be picked up when they register at the Information Desks in the Kentucky Hotel lobby or at Freedom Hall.

TRANSPORTATION—Cabs displaying signs will charge a flat rate to the Fair-

grounds from the hotel district as they did at the previous Tournament. Buses will be identified with signs and will give special attention to service from downtown to the Fairgrounds at regular rates.

PARKING OF SCHOOL BUSES at the Fairgrounds has been handled at the rate of 25c per bus. It has been requested by the police that, in order to handle buses expeditiously and to place them all in a special parking area, they use the same Gate No. 2, off Crittenden Drive, as will be used by Tournament Officials.

High School Wrestling

1. The following quotation is taken from a recent Indiana High School Athletic Association's Bulletin:

"Recently received data from the State Associations which sponsor state wrestling tournaments indicate that wrestling continues to be the most rapid growing high school sports activity. Statistics reveal that, in most states, there is a 10% to 20% increase in the number of schools sponsoring the sport in 1960-61. This continued rapid growth trend has been greater during the last five or six years than at any other period."

II. Benefits of a Wrestling Program

A. Boys of All Sizes — All boys are given an opportunity to compete with boys of comparable size in weight classes from 95 pounds to 235 pounds. The wrestling program particularly gives the small boys a chance to compete and to find athletic success that is not offered by other sports. During the six years that New Albany has had a wrestling program, 49 varsity letters were given to boys who received varsity awards in no other sport. The majority of these awards were given to boys from 95 pounds to 127 lbs.

B. Need for another Winter Sport—A decrease in the number of participants from the fall sports to the winter sports shows a need for an additional activity during the winter months.

Wrestling will never compete with basketball, but it offers to those incapable of playing basketball the opportunity to physical participation when play is confined to the indoors. The wrestling program also may satisfy the down-hearted or dejected boy who had dreamed of becoming a basketball star, but he was not quite good enough to make the squad. These boys with fair athletic ability and great desire often make outstanding wrestlers.

PLEASURE RIDGE PARK — CLASS AAA, REGION 2, DISTRICT 1, CHAMPION



(Left to Right) Front Row: Jim McNay, Jim Marconi, Jim Proctor, Tommy Estes, Richard Thompson, Mike Wright, Arthur Hutcherson, Mike Johnson, Mike Collier, Second Row: Scott Collier, John Revell, Lee Stevens, Bill Barclay, Arthur Lake, Mark McCardwell, Don Basham, Steve Tingle, Stanley Snowden, Hasley Hart, Third Row: Gregory Sheeley, Mike DeWitt, Richard Wigginton, Carl Dohn, John Brunick, Russell Davis, Don Coaplen, Danny Rayhill, Ronnie Fey, Jackie Wilson, Fourth Row: Mgr. Keith Collier, Don Fey, Gerald Jones, Gary Conkin, Tom Monarch, Mark Gibson, David Madison, Mgrs. Kenny Meredith, Robert Ash, Bruce Ellis, Bobby Schanie.

III. Problems Encountered in Starting A Wrestling Program

A. Facilities and Equipment

1. Practice area—Any area that is large enough to accommodate the mats and the boys can be used as the practice area. Such places as gyms, stages, discarded classrooms, space between and beneath bleachers have been used. You should have good heat and available room for running.

2. Mats—The wrestling area should be 24 feet by 24 feet. Smaller mats pieced together often are more convenient if it is necessary to move them every day. Most wrestling coaches seem to prefer eight 6 x 12.

3. Mat Covers, Scales, Practice Equipment, and Match Equipment, Head gears and Knee Pads are the other equipment needed.

B. The Wrestling Coach — We suggest Three Alternatives.

1. An experienced wrestler — This naturally would be the first choice provided he meets the other requirements necessary.

2. A Person Who Knows Wrestling But Has Never Participated.

This man could make a fine coach provided he has an interest.

3. An enthusiastic person who is willing to work.

This type of man can make a good coach because he usually feels inferior to his colleagues and works hard to try to compensate for his lack of knowledge. He must,

however, have a desire to succeed and a willingness to work toward that goal.

NOTE: We do not recommend the starting of a wrestling program if it is necessary to assign the job of coach to someone who is not interested in promoting the program.

C. Educating the School and the City about wrestling

1. Differentiating between amateur and pro style of wrestling—The word wrestling automatically brings to the minds of those uninformed the "grunt and groan" style of professional wrestling.

Amateur wrestling is completely different. The rules of amateurs are very strict and allow no holds that are apt to cause injury. It is based on leverage principals, quickness, balance, strength, and conditioning. The value of each quality will vary with the individual.

2. Wrestling Is A SAFE SPORT. We have no statistics here to validate this statement, but if your school is concerned with this program, contact any college wrestling coach. They will send you information of research studies or tell you where you can find the information.

3. Scoring and Miscellaneous Promotions

a. The participants themselves must, of course, be informed about the scoring methods. They will in turn help to explain the system to others.

b. If possible, have open practice sessions starting about two weeks before the

ANNOUNCING FOR 1965-1966

The Special Football Plan Designed For Kentucky High School Football Coaches Association Will Be Offered In Connection With An Excellent Student Accident Coverage For Your Schools.

Your Inquiries Will Be Answered Promptly.

The Kingden Company GENERAL AGENT

W. E. KINGSLEY

J. E. McCREARY, Mgr.
Life Department

CHARLES C. PRICE

121-123 LAFAYETTE AVENUE
P. O. BOX 7100

LEXINGTON, KY.

PHONE 255-0837

first match. Before this time it would be better to keep the practices closed to keep from embarrassing prospective candidates.

c. Have an assembly program a day or two before the first match to explain the scoring, some of the moves, and of course to ask for their attendance at the match.

d. Before the session starts, invite the parents of all the boys participating to the open practice conducted as a clinic.

e. Have the public address system set up for the matches and have the announcer (this may have to be the coach) explain the reason for the points as they are awarded.

f. With cooperation from the local sportswriter, periodic releases to the local newspaper could be organized so as to promote the wrestling program as well as to educate the people about the rules, scoring, and legal and illegal holds.

official and ask for the time-out. A player is privileged to supplement his oral request by sign if he chooses to do so. However, there is no sign authorized by the rules committee to be used in making the time-out request.

32. PLAY: On a try for a field goal, A1 is fouled by: (a) B1 and B2; or (b) B1, B2 and B3. The try is successful.

RULING: In both (a) and (b) the field goal counts. In (a) A1 is awarded two free throws, and in (b) A1 is awarded three free throws. In both (a) and (b) each B player who fouled A1 is charged with one personal foul.

33. PLAY: A1 commits his 5th personal foul. The scorer neglects to notify the official, and as a result, A1 continues to participate. After some time, the scorer discovers his error and notifies a floor official.

RULING: A1 is immediately removed. Any points he has scored, during the interim between the time he committed his fifth personal foul and when he was notified of disqualification, count. A1 is not considered to have been participating after having been disqualified because he had not been notified of the disqualification.

34. PLAY: During a jump ball between A1 and B1, does the clock remain stopped for the following violations: (a) A2 is in the cylinder of the restraining circle before the ball is tapped; or (b) A1 catches the tossed ball; or (c) A1 taps the ball once and then catches it, or he taps the ball a third time.

RULING: The clock remains stopped in (a) and (b). In (c), it starts with the legal tap and is stopped when A1 commits the violation.

Basketball Questions

(Continued from January ATHLETE)

31. PLAY: How must a player request a time-out. RULING: A request for a time-out must be made orally, that is, the player desiring it must speak to the

**STATE BASKETBALL
TOURNAMENT**

MARCH 17-18-19-20

**SEE OUR COMPLETE
DISPLAY**

**OF ATHLETIC EQUIPMENT
IN THE
CONFERENCE ROOM**

Standiford Motor Hotel

**Watterson Expressway
At Standiford Airport**

Five Minutes From Freedom Hall

***OUR REPRESENTATIVES WILL BE
THERE TO GREET YOU***

THE SUTCLIFFE CO.

LOUISVILLE 1, KENTUCKY

K. H. S. A. A. TOURNAMENT DIRECTORS

District and Regional Tournament Directors can get all of their supplies and needs to run a tournament from Hunt's. We have the merchandise listed below in stock for immediate shipment. Call or write us your needs.

BASKETBALLS

Get the feel of a basketball same as will be used in the State Tournament in Louisville in your District or Regional Tournament. We have the following:

No. AFR panel lock molded ball endorsed by Coach Adolph Rupp and used by the University of Kentucky Basketball Team.

No. ARX Last Bilt ball made by Spalding.

Both of these balls will definitely be used in the State Tournament in Louisville.

ADMISSION TICKETS

Complete stock of admission tickets, 2,000 tickets to the roll, printed with established admission prices and numbered consecutively. Also PASS OUT tickets, ADMIT ONE tickets, all in different colors. \$1.25 per roll of 2,000.

TROPHIES AND AWARDS

We can take care of your Sportsmanship trophies, individual charms for All-Star teams. All-Tournament teams, etc. Our stock is complete and we can engrave and ship to you at once.

ACCESSORIES

Nets, scorebooks, first-aid supplies, whistles, stopwatches, timers' horns, powdered resin, bath towels, shoe laces, colored top sweat socks, carry-all bags. All of this merchandise in stock for at once delivery.

BANKS AND GOALS

We have a complete stock of fan-shaped steel, fan-shaped wood, and rectangular glass backboards complete with goals and nets in stock for at once delivery. A phone call will get them off to you at once.

FAIR-PLAY ELECTRIC BASKETBALL SCOREBOARDS

We have IN STOCK the Tick-A-Way FF-1S Fair-Play in our warehouse ready for immediate shipment. A call will get one to your gymnasium before tournament time.

Turn all of your needs over to us. We will be glad to handle them for you. ROY BOYD, JIM MITCHELL, ED HENDLEY or C. A. BYRN, JR. are always ready to assist you in every way possible.

If you want the BEST QUALITY and the BEST SERVICE contact HUNT'S

HUNT'S ATHLETIC GOODS CO., Inc.

CH 7-1941 — PHONES — CH 7-1942

MAYFIELD, KENTUCKY

PHONE 451-0576 LOUISVILLE, KY.



WE SHIP THE DAY YOU BUY

