

9-1-1966

# The Kentucky High School Athlete, September 1966

Kentucky High School Athletic Association

Follow this and additional works at: <http://encompass.eku.edu/athlete>

---

## Recommended Citation

Kentucky High School Athletic Association, "The Kentucky High School Athlete, September 1966" (1966). *The Athlete*. Book 122.  
<http://encompass.eku.edu/athlete/122>

This Article is brought to you for free and open access by the Kentucky High School Athletic Association at Encompass. It has been accepted for inclusion in The Athlete by an authorized administrator of Encompass. For more information, please contact [Linda.Sizemore@eku.edu](mailto:Linda.Sizemore@eku.edu).

# THE KENTUCKY



# High School Athlete

K.H.S.A.A. SCHOOL FOR FOOTBALL OFFICIALS



Above are area representatives who attended the School for Football Officials, held in Lexington on August 5-6. They are: (Left to Right) Front Row—Joe Treas, Fulton; Ray Canady, Barbourville; George Mercker, Louisville; Bill Mayhew, Elizabethtown; Bill Mordica, Ashland; Gordon Reed, Fort Thomas. Second Row—Clyde Parsley, Providence; E. B. May, Jr., Prestonsburg; Robert Fallon, Hazard; Vic Brizendine, Louisville; School Director Edgar McNabb, South Fort Mitchell; Bernard Johnson, Lexington; Paul Walker, Glasgow.

Official Organ of the  
**KENTUCKY HIGH SCHOOL ATHLETIC ASSOCIATION**

SEPTEMBER, 1966

**Football Districts and Regions**  
The football districts and regions for 1966, are as follows:

**Class AAA**

**REGION I**

Atherton, Bishop David, Central, DeSales, duPont Manual, Flaget, Iroquois, Male, Shawnee, St. Xavier, Trinity

**REGION II**

**District 1—**

Butler, Fairdale, Pleasure Ridge Park, Southern, Valley, Western

**District 2—**

Durrett, Eastern, Fern Creek, Seneca, Thomas Jefferson, Waggener, Westport

**Class AA**

**REGION I**

**District 1—**

Bowling Green, Caldwell County, Christian County, Franklin-Simpson, Hopkinsville, Madisonville, Mayfield, Paducah

**District 2—**

Butler County, Henderson, Henderson County, Ohio County, Owensboro, Owensboro Catholic, Union County

**REGION II**

**District 1—**

Elizabethtown, Breckinridge County, Fort Knox, Franklin County, Henry County, Kentucky Military Institute, LaRue County, Meade County, North Hardin, Oldham County, St. Joseph, Shelby County

**District 2—**

Bourbon County, Bryan Station, Clark County, Danville, Dunbar (Lexington), Harrison County, Henry Clay, Jessamine County, Lafayette, Madison, Madison Central, Shelbyville, Somerset, Tates Creek, Woodford County

**REGION III**

**District 1—**

Boone County, Campbell County, Dixie Heights, Highlands, Holmes, Newport, Newport Catholic, Simon Kenton

**District 2—**

Boyd County, Fleming County, Louisa, McKell, Paul G. Blazer, Raceland, Rowan County, Russell

**REGION IV**

**District 1—**

Bell County, Corbin, Cumberland, Evarts, James A. Ca-wood, Knox Central, Middlesboro, Whitley County

**District 2—**

Belfry, Hazard, Jenkins, Leslie County, M. C. Napier, Prestonsburg, Whitesburg

**Class A**

**REGION I**

**District 1—**

Crittenden County, Fort Campbell, Fulton, Fulton County, Murray, North Marshall, Russellville, Trigg County, Warren County

**District 2—**

Campbellsville, Cumberland County, Glasgow, Greensburg, Metcalfe County, Tompkinsville

**REGION II**

**District 1—**

Bardstown, Eminence, Lebanon, Louisville Country Day, Old Kentucky Home, Shepherdsville, Springfield

**District 2—**

Anderson, Berea, Boyle County, Burgin, Frankfort, Garrard County, Georgetown, Harrodsburg, Ky. School for the Deaf, Mercer County, Sayre, Scott County, Stanford

**REGION III**

**District 1—**

Beechwood, Bellevue, Carroll County, Dayton, Lloyd Memorial, Ludlow, Owen County

**District 2—**

Bath County, Falmouth, Irvine, Millersburg Military Institute, Montgomery County, Mt. Sterling, Nicholas County, Paris

**REGION IV**

**District 1—**

Harlan, Hazel Green, Lily, London, Lynch, Lynn Camp, Mt. Vernon, Pineville, Williamsburg

**District 2—**

Catlettsburg, Elkhorn City, Fleming-Neon, Johns Creek, Morgan County, Paintsville, Pikeville, Wheelwright, Wurtland

**1966 FOOTBALL PUBLICATIONS CORRECTIONS**

Page 33: 7-1-3—Reference (as in 2-27)

Page 48: 10-3-3—Reference (See Rule 2-28-6 . . .)

**Case Book**

Page 9, Play 17: Ruling for part (b) should state "in (b), the covering official will stop the clock . . ." It may or may not be the referee.

Page 10, Play 19: A football rules committee interpretation is the basis for the ruling.

Page 20, Play 103J: The third sentence of the ruling in its entirety should correctly read as follows:

"B1 is not eligible to continue to participate until the equipment has been sanctioned, or if illegal, is removed."

Page 28, Play 122B: Delete the entire play.

Page 32, Play 131: The third line from the bottom of the page is misplaced. It should follow the last line on the page. In this order, it will read correctly.

Page 49, Play 222B: Delete from the second line in the ruling the word "not".

Page 82, Play 268A: Revised ruling should properly read "illegal or unsportsmanlike coaching from the sidelines."

Page 82, Play 268C: Questions have been raised concerning the ruling for this situation. It is, however correct.

**Football Rules — Simplified and Illustrated**

Page 76, 2nd play: Revised ruling: "After signalling offsetting penalties, B's ball, 1st and 10 at spot of foul by B2."

**FILMS**

The films listed below are in the Film Library of the University of Kentucky College of Education. The Code letters "e,j,s,c-a," refer to elementary, junior high, senior high, college and adult audiences who may enjoy the particular film listed. The rental prices shown do not apply to schools which use one of the special subscription service plans, offered by the Bureau of Audio-Visual Material.

**Football**

BALL HANDLING IN FOOTBALL, j-s-c-a, 1 reel, \$1.50.

Fundamentals of ball handling are stressed; stance, grip, "feel" of the ball, finger-tip control adjustment before throwing or kicking, receiving passes from center or from a back, catching passes and punts, ways of carrying ball, and changing from one hand to another. Game shots are presented, using slow motion and stop action techniques, and superimposed animation to illustrate principles.

BLOCKING IN FOOTBALL, j-s-c-a, 1 reel, \$1.50.

Fundamentals of good blocking are taught in this film; position, speed, drive, follow-through, timing, and body control. Describes shoulder and body blocks, demonstrating several varieties of these. Importance of good physical condition, practice, and experience are emphasized. Special photography used to illustrate different points.

OFFICIAL FOOTBALL j-s-c-a, 3 reels, color, \$1.00.

This film portrays the play situations covering the basic rules of football as played under the National Alliance Code. The theme is centered around the official interpretations of the rules as they apply to the three teams always present on the field, the home team, the visiting team and that all important third team, the officials.

TACKLING IN FOOTBALL, j-s-c-a, 1 reel, \$1.50.

Tackling properly is shown as the result of application of certain fundamentals: good physical condition, speed, body placement, drive, sure grip, timing, and body control. Shoulder and cross body tackles are demonstrated in various ways, with special instructions for safety and means of a reducing shock.

THIS IS FOOTBALL, e-j-s-c-a, 4 reels, color, \$1.00.

Centered around the four S's — Science, speed, skill and safety. Demonstrations cover basic rules that will aid the official, coach, players, and fan. Play situations are used to establish standards.

KNOW YOUR FOOTBALL, e-j-s-c-a, 3 reels, color, \$1.00.

This film gives a visual approach to the written rules. Play situation chosen will challenge the viewer's knowledge and clarify many rules interpretation interference and a multitude of other difficult decisions. It is recommended for fans as well as officials, coaches and players.



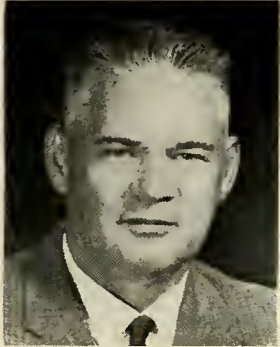
# The Kentucky High School Athlete

Official Organ of the  
Kentucky High School Athletic Association

VOL. XXIX—NO. 2

SEPTEMBER, 1966

\$1.00 Per Year



**Sherman Gish**  
President



**Don Davis**  
Vice-President

Superintendent Sherman Gish of the Muhlenberg County Schools was elected President of the K.H.S.A.A. Board of Control at the summer meeting of the directors held on July 30, 1966. Assistant Superintendent Don Davis of the Kenton County Schools was elected Board Vice-President. The two men represent respectively Sections 2 and 5.

Mr. Gish, a graduate of Bremen High School, holds A.B. and M.A. degrees from Western Kentucky University. He is married to the former Ruby Mae Miller. They have one son, Raymon "Rip" Gish, a former basketball star at Western Kentucky, who is now with the Phillips Petroleum Company after playing for the Marines two years.

Sherman Gish has been in the Muhlenberg County school system for the past thirty-nine years in various positions, teacher, coach, principal and superintendent. He is a member of the Bethlehem Baptist Church, the Third District Kentucky Educational Association, the National Educational Association, and the state and national associations of school administrators.

Mr. Davis, a graduate of the Dayton High School, holds degrees from Cincinnati and St. Xavier Universities. A college letterman in football, basketball, and baseball, he has coached these sports in high school as well as track and swimming.

Mr. Davis is affiliated with numerous professional educational organizations. He is a Past President of the Bellevue Rotary Club, a charter member of the Campbell County Youth Advisory Committee, and a Past Chairman of the Bellevue Youth Advisory Committee. He was in the service during the 1941-46 period, being discharged with the rank of 1st Lieutenant in the Coast Artillery Anti-Aircraft. Since that time teaching and coaching assignments have been at Wellston (Ohio) High School, Dayton High School, and Holmes High School. From 1957 to 1962 Mr. Davis was Principal of the Bellevue High School, and he was named Assistant Superintendent of Kenton County Schools in 1962. He is married to the former Mary Louise Byland. They have four children, one boy and three girls.

## Attention, Principals!

K.H.S.A.A. By-Law 23 provides that officials for any contest shall be agreed upon at least ten days before the contest. Many administrators and coaches are not complying with the provisions of this rule. Visiting coaches arrive at the game site with no agreement on officials having been made, the theory being "You name the officials when we play on your floor (or field), and I'll name the officials when your team comes our way." Through the years much trouble has developed when this plan has been followed.

The rule mentioned states that it is the responsibility of the home school principal to instigate proceedings leading to the agreement on officials. If the home school principal fails in this duty, the administrator or coach of the visiting school is not relieved completely of his responsibility to see to it that the officials are agreed upon.

A list of registered football officials appears in this issue of the *ATHLETE*. Principals and coaches should study the current list to determine whether or not all officials with whom contracts have been signed have registered this fall. Supplementary list of officials will appear in subsequent issues of the magazine. By-Law 22 provides that member schools shall use registered officials in all football and basketball games, and that failure to comply with this regulation makes the home school liable for suspension. If there is any question about registration, the official should be asked to present his card.

## Attention, Officials!

The attention of all registered K.H.S.A.A. football, basketball and baseball officials is called to By-Law 29, Section 9, which provides that the official shall be supplied with an emblem which he shall wear on his shirt or sweater. This rule will be enforced strictly in 1966-67 as it has been in recent years. The emblem is to be worn on the left shoulder shirt sleeve approximately one and one-half inches below the shoulder seam. The Approved or Certified bar should be worn below the emblem. Failure to wear the emblem will make an official liable for suspension from the Officials' Division of the Association.

Recommended uniforms are as follows:

Football—black and white striped shirt (long or short sleeves), black baseball cap with white piping, white knee pants, black belt, black stockings, black shoes and laces;

Basketball—black and white striped shirt (short sleeves, long sleeves by special permission), black trousers, black belt, black shoes and laces;

Baseball—navy blue or black trousers, black athletic leather shoes (not football shoes), navy blue coat or jacket, navy blue shirt if working coatless, white shirt if wearing coat or jacket, white shirt on bases if all base umpires are dressed the same, umpire's navy cap (no player caps), indicator and mask of choice, inner protector or inflated protector (inflated type if official desires to purchase), black belt, black shoe laces, black tie with white shirt.

SEPTEMBER, 1966

VOL. XXIX—No. 2

Published monthly, except June and July, by the Kentucky High School Athletic Association  
Office of Publication, Lexington, Ky. 40501  
Second class postage paid at Lexington, Kentucky.

Editor ----- THEO. A. SANFORD  
Assistant Editor ----- J. B. MANSFIELD  
Lexington, Ky.

**BOARD OF CONTROL**

President ----- Sherman Gish (1963-67), Greenville  
Vice-President ----- Don Davis (1963-67), Independence  
Directors—Morton Combs (1964-68), Carr Creek; Ralph C. Dorsey (1966-70), Horse Cave; Preston Holland (1965-69), Murray; Don R. Rawlings (1965-69), Danville; Foster J. Sanders (1966-70), Louisville; Oran C. Teater (1964-68), Paintsville.

Subscription Rate ----- \$1.00 Per Year

*From the Commissioner's Office***Basketball Clinics**

The 1966-67 rules meetings for registered basketball officials and coaches will be conducted by veteran clinic director Charlie Vettiner. The dates and sites of the meetings are as follows:

September 25, Phoenix Hotel, Lexington, 1:30 P.M.  
September 25, Newport High School, 7:00 P.M.  
September 26, Morehead State University, 1:30 P.M.  
September 26, Paul G. Blazer High School, Ashland, 7:00 P.M.  
September 27, Pikeville High School, 1:30 P.M.  
September 27, Hazard High School, 7:00 P.M.  
September 28, Bell High School, Pineville, 1:30 P.M.  
September 28, Somerset High School, 7:00 P.M.  
October 2, Ohio County High School, Hartford, 1:30 P.M.  
October 2, Daviess County High School, Owensboro, 7:00 P.M.  
October 3, Tilghman High School, Paducah, 1:30 P.M.  
October 3, Christian County High School, Hopkinsville, 7:00 P.M.  
October 4, Reservoir Hill, Bowling Green, 1:30 P.M.  
October 4, Elizabethtown High School, 7:00 P.M.  
October 5, Kentucky Hotel, Louisville, 7:00 P.M.

**School for Basketball Officials**

The Eighteenth Annual School of Mechanics for Basketball Officials was held at the Phoenix Hotel, Lexington, on August 7-8, 1966. Basketball Clinic Director Charlie Vettiner directed the school.

The services of the area representatives who attended the school will be available to Association member schools throughout the basketball season. The men will conduct additional clinics for officials, coaches and players; and will assist beginning officials in registration.

K.H.S.A.A. area representatives who attended the school were: Jerry Kimmel, Beechmont; Bob Gour, Bowling Green; Roy Winchester, Bethlehem; Bob Foster, Science Hill; Charlie Irwin, Hopkinsville; Howard Gardner, Elizabethtown; Rex Alexander, Murray; Claude Ricketts, Louisville; Hubert Loudon, Louisville; Billy Wise, Lexington; Kenneth Loudy, Slemp; Walt Green, Middlesboro; Jack Wise, Georgetown; E. B. May, Jr., Prestonsburg; Ernie Chatten, Ashland; Bol Miller, Fort Thomas; Roy Settle, Owensboro.

**Football Examination**

Part II of the National Federation Football Examination for officials will be given in Kentucky on Monday, September 19. An official who has been registered for at least one year prior to the current season is eligible to take the examination and work for a higher rating. Officials who hold the Approved rating in football are required to make a minimum percentage grade

of 80 in order to maintain this rating from year to year. After an official has received the Certified rating, he continues to receive this rating each year provided that he attends the clinic for that year and has worked in at least six first team high school football games during the previous year. Eligible officials who wish to take the test should write to the State Office.

**Attention, Football Coaches!**

During the School for Football Officials, which was held in Lexington on August 5-6, several suggestions were made which, if they are followed, will improve the administration of the game. The Commissioner is asking each head football coach to do the following when his team plays at home:

1. See to it that all of the playing field is marked with lines 5 yards apart;
2. Assign members of the chain crew for the season, if this is possible;
3. Have all team boxes marked clearly;
4. Explain in detail to the clock operator the provisions of Football Rules 3-5-2 and 3-5-3.

**Attention, Basketball Coaches!**

The dates and sites of the 1966-67 basketball clinics are given elsewhere in this issue of the ATHLETE. Clinic attendance by head basketball coaches is required under the provisions of K.H.S.A.A. By-Law 29-3. Players and other members of the school's coaching staff are invited to attend the clinic. Basketball coaches are urged to bring their scorers and timers to the meetings.

**New Football Film**

The new football film, KNOW YOUR FOOTBALL, was released for distribution on July 1, 1966. The film was produced under the sanction and supervision of the National Federation of State High School Athletic Associations and allied groups. This film is the twenty-fifth in the series of official rules films and the tenth football film.

Wheaties Sports Federation and Wilson Sporting Goods Co. are again serving as co-sponsors of the film as they have for all previous films.

The scenes for KNOW YOUR FOOTBALL were filmed on the Glendale High School football field, Glendale, Arizona. The host state association was the Arizona Interscholastic Association, Inc. Playing personnel were chosen from the Glendale High School. Members of the National Federation of State High School Athletic Associations and allied groups served as members of the Technical Staff, and thereby assure the authenticity of the rules for the situations filmed. Outstanding officials were chosen from Colorado, Illinois, Nevada and Utah to appear in the film.

KNOW YOUR FOOTBALL gives a visual approach to the written rules as they apply to the game of football. Play situations chosen for the film cover requests from officials and coaches who not only wanted to know the rules but to have guide-lines that would help them understand those difficult judgment decisions. KNOW YOUR FOOTBALL is recommended for fans as well as officials, coaches and players.

Two prints of the film have been secured by the Kentucky High School Athletic Association, and have been placed on loan with the Bureau of School Service, College of Education, University of Kentucky.

**Minutes of Board Meeting**

The Board of Control of the Kentucky High School Athletic Association met at Kenlake Hotel, Kentucky Lake State Park, on Saturday morning, July 30, 1966. The meeting was called to order by retiring President Foster J. Sanders at 9:30, with Board members

(Continued on Page Six)



# Officials' Ratings on Sportsmanship of K.H.S.A.A. Member Schools in Basketball, 1965-1966

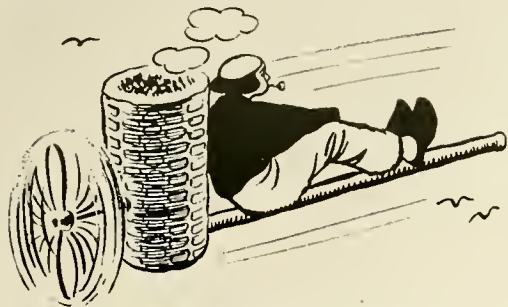
(Continued from August ATHLETE)

SCHOOL	COACH				OTHER SCHOOL OFFICIALS				CROWD				TEAM			
	E	G	F	P	E	G	F	P	E	G	F	P	E	G	F	P
Leslie County	33	5	5	6	40	8	0	0	35	9	4	1	32	11	5	1
Letcher	43	12	1	1	49	6	0	1	47	9	0	0	47	9	1	0
Lewis County	31	4	2	2	34	5	0	0	35	4	0	0	32	5	2	0
Lewisburg	40	10	0	2	44	8	0	0	35	16	1	0	36	16	0	0
Lexington Catholic	55	32	3	0	64	24	1	0	58	32	0	0	53	34	3	0
Liberty	39	15	4	1	37	20	1	1	27	24	6	2	32	25	2	0
Lily	50	14	1	3	51	15	0	2	44	22	1	1	45	18	5	0
Lincoln Institute	30	17	4	1	40	12	0	0	31	20	1	0	34	18	0	0
Livermore	68	14	5	2	78	9	0	2	63	21	3	2	65	19	3	2
Livingston	47	7	1	0	44	11	0	0	36	15	3	1	34	16	4	1
Livingston Central	32	10	0	0	33	8	1	0	27	13	2	0	27	12	3	0
Lloyd	57	13	1	0	58	13	0	0	44	20	1	1	45	16	7	3
London	54	8	2	4	60	5	2	0	61	5	2	0	56	9	2	1
Lone Jack	55	8	1	0	53	6	1	0	53	9	2	0	49	10	4	0
Lone Oak	36	6	2	0	33	4	1	5	32	10	2	0	34	6	2	1
Louisa	35	9	6	1	41	9	1	0	33	14	4	0	35	15	1	0
Louisville Country Day	27	1	0	1	26	3	0	0	25	3	1	0	25	3	0	0
Louisville Male	45	15	1	3	51	10	2	1	42	16	5	1	44	13	5	2
Loves	32	8	2	2	36	7	0	0	31	11	0	1	36	5	2	0
Loyall	46	5	2	2	49	6	0	0	43	11	1	0	48	5	2	0
Ludlow	47	32	4	0	49	29	1	0	41	38	5	0	39	36	8	0
Lynch	29	10	3	4	38	6	1	1	36	8	2	0	29	9	6	2
Lynn Camp	38	16	1	3	44	12	1	1	37	15	4	2	36	12	6	4
Lyon County	35	16	5	2	30	12	4	13	27	19	3	9	31	15	6	6
McCreary County	23	14	2	3	28	13	1	0	23	17	2	0	27	10	4	1
McDowell	50	11	0	1	45	11	1	0	48	11	2	1	47	9	4	1
McKee	35	9	2	0	28	17	1	0	25	17	3	1	26	15	3	2
McKell	47	2	0	0	47	2	0	0	44	5	0	0	41	5	0	0
McKinney	30	22	3	0	41	14	0	0	28	23	2	2	31	24	0	0
Mackville	31	9	2	1	35	8	0	0	27	15	1	0	24	14	2	3
Madison	35	4	2	4	40	5	0	0	37	7	2	0	37	5	2	1
Madison Central	48	11	1	1	47	13	0	0	43	15	2	1	42	18	1	0
Madisonville	64	9	1	0	69	6	0	0	60	13	1	1	60	15	0	0
Martin	38	17	4	0	47	9	3	0	36	19	4	0	42	11	5	1
Mason County	55	4	2	0	53	7	0	0	39	20	1	1	46	15	0	0
Mayfield	34	12	4	0	38	11	0	1	32	10	5	3	32	16	1	0
Maysville	50	11	2	0	49	11	1	0	33	28	1	1	35	26	1	1
Maytown	42	10	4	0	41	13	1	0	32	18	4	1	39	11	4	1
M. C. Napier	25	9	3	0	31	6	0	0	27	10	0	0	22	13	2	0
Meade County	45	9	2	4	49	6	0	4	44	11	1	1	42	13	2	1
Meade Memorial	53	6	0	0	54	4	0	0	53	6	0	0	52	6	1	0
Memorial (Hardyville)	46	20	5	2	55	15	2	1	39	29	2	1	45	25	0	1
Memorial (Waynesburg)	27	10	0	0	30	7	0	0	25	11	1	0	21	15	1	0
Menifee County	35	14	5	1	45	10	0	0	43	12	0	0	39	14	2	0
Mercer County	40	5	2	1	40	7	0	0	35	13	0	0	34	12	0	2
Metcalfe County	33	9	2	2	41	4	1	0	34	9	3	0	34	10	2	0
Middlesboro	34	8	1	2	37	6	1	0	32	9	3	0	32	8	4	0
Millersburg Military Inst.	48	8	1	0	49	7	0	0	48	8	1	0	46	8	3	0
Model	22	5	0	1	25	3	0	0	19	8	1	0	19	3	4	2
Montgomery County	53	21	2	4	57	21	2	0	51	27	2	0	49	23	8	0
Monticello	39	6	1	0	38	7	0	0	37	8	1	0	38	8	0	0
Morgan County	49	13	0	0	48	14	0	0	44	18	0	0	41	19	2	0
Mt. Sterling	43	11	6	6	49	15	1	1	48	12	5	1	49	12	2	3
Mt. Vernon	39	6	1	1	43	4	0	0	32	14	0	1	33	11	1	2
Mt. Washington	44	6	3	4	48	8	1	0	38	8	5	7	45	8	3	1
Muhlenberg Central	29	10	3	5	30	14	3	0	25	17	4	1	25	11	5	6
Mullins	70	8	0	2	70	6	0	2	66	14	4	2	56	13	8	3
Munfordville	43	6	0	0	43	6	0	0	42	7	0	0	43	6	0	0
Murray	30	9	2	0	35	5	1	0	27	11	2	1	30	9	2	0
Murray College	17	5	3	0	18	6	0	0	15	9	0	0	13	9	2	0
Naney	45	26	0	0	51	17	2	2	40	28	2	1	47	22	2	0
Newport	54	24	6	4	66	15	2	2	48	35	2	2	49	34	1	2
Newport Catholic	48	30	5	1	57	19	0	0	44	29	9	2	49	32	3	0
Nicholas County	44	3	1	3	46	4	1	0	43	7	0	0	45	4	1	0
North Hardin	32	9	4	1	38	7	1	0	34	11	1	0	35	9	2	0
North Marshall	36	8	0	3	40	6	0	1	32	11	1	3	36	7	2	1
North Warren	22	8	9	12	35	10	2	4	30	14	6	1	28	11	7	5
Ohio County	58	9	0	3	57	10	1	1	41	24	0	4	47	20	1	2
Oil Springs	54	6	1	0	55	6	0	0	50	11	0	0	53	7	1	0
Old Kentucky Home	31	16	3	6	31	11	1	11	34	19	2	1	28	18	0	0
Oldham County	41	17	5	0	45	16	0	0	33	29	1	0	34	24	4	1
Olive Hill	52	6	0	0	55	3	0	0	49	9	0	0	51	6	1	0
Olmstead	37	5	0	0	36	4	2	0	31	9	1	1	32	10	0	0
Oncida	41	7	2	0	41	9	0	0	41	8	1	0	37	12	1	0
Owen County	41	16	3	0	44	13	1	1	41	18	1	0	39	17	3	1
Owensboro	49	5	1	4	47	5	3	4	42	11	2	3	44	14	1	0
Owensboro Catholic	39	13	2	1	48	7	0	0	42	11	2	0	45	9	1	0
Owsley County	31	7	1	2	32	9	0	0	29	9	1	2	24	16	2	0
Paducah Tilghman	31	11	2	2	39	7	0	0	28	9	3	6	35	8	1	2
Paintsville	51	3	1	0	50	5	0	0	45	8	1	1	48	6	1	0
Paris	61	3	0	0	58	4	1	0	55	10	0	0	52	12	0	0
Park City	35	7	5	2	42	7	0	0	35	14	0	0	32	13	4	0
Paul G. Blazer	46	12	2	2	53	8	0	1	46	13	2	1	37	20	1	4
Pendleton	55	26	2	2	54	25	4	2	33	32	14	6	38	35	9	3
Phelps	41	14	0	0	43	13	0	0	40	14	1	0	41	13	2	1
Pikeville	51	16	3	0	59	11	0	0	48	18	4	0	48	20	2	0

Pine Knot	53	6	0	0	53	7	0	0	50	9	0	0	50	8	0	0
Pine Mountain	2	0	0	0	2	0	0	0	2	0	0	0	1	1	0	0
Pineville	45	4	1	1	50	2	0	0	43	7	1	1	42	7	3	0
P. L. Dunbar	33	33	1	0	40	31	0	0	35	35	1	1	37	34	1	0
Pleasure Ridge Park	39	14	8	1	44	14	3	0	35	20	6	1	37	16	9	0
Powell County	36	9	2	2	39	9	1	0	31	13	3	2	35	11	2	2
Prestonsburg	27	4	0	0	25	6	0	0	21	9	1	0	22	9	0	0
Prichard	25	2	1	0	25	3	0	0	25	3	0	0	24	3	1	0
Providence	49	16	1	0	47	15	1	3	39	17	8	1	44	20	1	0
Pulaski County	40	7	0	0	38	9	0	0	31	11	3	2	39	8	0	0
Raceland	41	8	1	1	43	6	2	0	35	12	4	0	37	11	3	0
Red Bird	33	4	0	2	37	2	0	0	31	6	2	0	33	4	2	2
Reidland	42	4	0	0	41	5	0	0	34	7	2	3	36	7	1	2
Richardsville	34	7	1	1	37	6	0	0	35	8	0	0	37	6	0	0
Riverside Christian	23	4	1	0	23	5	0	0	19	6	3	0	20	6	2	0
Riverview	19	5	0	1	19	5	0	1	16	5	3	1	15	7	2	1
Rosenwald	47	8	0	0	50	5	0	0	39	13	3	1	39	13	2	2
Rowan County	41	8	1	2	45	6	0	1	38	12	0	2	36	12	2	2
Russell	44	8	1	1	46	8	0	0	41	9	4	0	35	15	1	1
Russell County	40	14	3	2	49	10	0	0	43	10	5	0	46	10	1	0
Russellville	42	9	0	0	42	9	1	0	36	14	2	0	36	16	0	0
Sacramento	44	14	1	6	51	13	0	1	40	23	1	1	34	20	4	6
St. Agatha	47	14	3	0	46	15	3	0	44	18	2	0	45	14	4	1
St. Aloysius	45	1	0	2	43	4	0	1	40	7	0	1	42	4	1	1
St. Augustine	40	5	2	0	40	4	0	0	39	8	0	0	38	9	0	0
St. Catherine	52	5	0	0	50	7	0	0	45	12	0	0	45	10	2	0
St. Charles	46	6	1	1	45	5	1	0	44	8	1	0	41	10	2	0
St. Francis	37	10	1	2	41	6	2	0	39	8	1	1	37	9	3	0
St. Henry	54	22	1	0	56	19	1	0	37	37	2	1	41	34	2	0
St. Joseph	46	6	2	0	45	8	0	0	42	9	1	1	42	11	1	0
St. Mary (Paducah)	38	12	4	4	52	5	1	0	44	9	4	0	45	11	1	1
St. Mary's (Whitesville)	48	6	0	3	50	4	2	1	45	9	1	2	40	14	0	3
St. Patrick	43	16	3	0	46	10	1	0	38	19	5	0	41	15	3	2
St. Thomas	55	25	4	4	66	19	2	0	46	34	6	1	52	32	3	0
St. Vincent	52	12	2	1	55	8	4	0	44	15	5	3	49	14	2	2
St. Xavier	62	20	4	0	63	21	1	0	56	26	3	1	52	33	0	0
Salyersville	42	13	5	1	46	14	1	0	34	20	4	3	32	19	5	5
Sandy Hook	47	8	1	0	49	7	0	0	43	10	3	0	46	6	3	1
Sayre	31	9	3	2	35	8	2	0	32	8	4	1	24	14	5	2
Scott County	50	9	5	2	52	11	2	0	42	20	3	2	42	18	6	1
Scottsville	34	6	0	0	36	4	0	0	30	8	1	1	29	9	2	0
Sedalia	27	16	2	2	31	16	0	0	24	21	0	2	23	21	3	0
Seneca	42	13	1	2	44	11	1	1	41	15	1	1	39	18	6	1
Shawnee	42	20	1	0	44	19	0	0	34	26	3	0	33	26	1	3
Shelby County	49	10	2	0	50	11	0	0	41	17	3	0	46	14	1	0
Shelbyville	42	9	2	2	44	10	0	0	41	14	0	0	42	12	1	0
Shepherdsville	28	12	2	1	26	15	1	0	22	18	3	0	25	15	3	0
Shopville	28	16	0	0	33	11	0	0	28	16	0	0	24	17	3	0
Silver Grove	45	26	7	3	53	21	4	1	36	29	10	7	41	32	7	2
Simon Kenton	56	32	3	2	58	27	3	1	42	43	5	2	46	38	8	1
Somerset	35	6	1	4	39	6	1	0	32	9	3	2	35	9	1	1
South Hopkins	37	18	7	5	55	10	1	1	33	21	8	5	43	12	8	4
South Marshall	20	16	5	8	36	12	1	0	20	22	3	4	31	17	0	1
South Portsmouth	47	3	1	1	48	2	1	0	42	5	1	2	41	6	2	2
Southern	45	10	1	0	46	8	0	0	35	20	1	0	40	14	2	0
Springfield	33	10	3	1	35	9	1	1	34	12	1	1	24	17	5	2
Stanford	44	11	0	1	41	15	0	0	33	21	1	1	39	15	0	2
Symsonia	48	10	0	0	47	8	3	0	36	19	2	0	41	15	1	1
Tates Creek	36	12	4	1	42	10	1	0	36	14	2	1	33	19	1	0
Taylor County	45	5	0	0	44	6	0	0	43	7	0	0	43	7	0	0
Taylorville	45	6	1	1	45	7	1	0	42	10	1	0	42	11	0	0
Temple Hill	24	7	3	1	30	5	0	0	24	10	1	0	22	11	2	0
Thomas Jefferson	49	11	3	4	54	10	1	0	46	18	2	0	47	13	2	4
Todd County	29	17	8	6	37	19	3	1	30	23	4	3	32	22	5	2
Tollesboro	45	7	0	3	46	10	2	0	40	18	2	0	45	14	0	0
Tompkinsville	26	16	0	0	30	11	0	0	25	13	3	1	29	12	0	0
Trigg County	31	10	2	3	25	9	0	2	30	14	1	1	32	12	2	0
Trimble County	37	15	3	5	46	12	1	0	45	13	2	0	40	18	3	0
Trinity	47	21	2	2	56	13	0	1	45	26	0	1	49	22	1	0
Tyner	35	11	0	0	34	12	0	0	32	13	1	0	33	10	3	0
Union County	32	7	4	3	37	8	1	0	33	11	2	0	32	11	3	0
Valley	50	16	7	0	59	11	1	0	46	23	2	1	45	23	4	0
Van Lear	33	13	1	0	37	10	0	0	25	17	4	1	31	15	1	0
Virgie	55	10	0	2	55	8	1	0	46	19	2	0	45	16	6	0
Waggener	43	11	4	1	52	6	0	0	46	10	2	1	47	11	1	0
Wallins	30	2	1	1	31	2	1	0	22	3	3	6	24	2	3	4
Walton-Verona	41	28	3	3	52	21	1	0	36	35	2	2	35	29	8	3
Warfield	48	11	2	2	47	12	2	2	45	14	3	1	47	11	5	0
Warren County	27	19	5	5	37	17	0	2	34	15	4	3	29	15	9	3
Wayland	36	14	4	1	36	18	1	0	27	20	3	5	31	15	5	3
Wayne County	49	7	2	2	53	7	0	0	49	10	1	0	44	11	1	4
Webster County	52	17	9	4	69	9	3	0	64	16	1	0	64	16	1	0
Western (Shively)	27	16	5	6	40	11	0	2	33	18	2	1	34	18	1	1
Western (Sinai)	43	15	2	0	44	15	0	0	39	19	1	0	36	20	3	0
West Hardin	49	2	0	0	49	2	0	0	47	4	0	0	45	5	1	0
West Hopkins	52	10	1	0	54	9	0	0	47	15	1	0	46	13	1	3
Westport	58	9	5	3	65	6	0	1	52	19	2	1	56	16	3	0
Wheelwright	23	4	0	0	20	6	0	0	19	6	2	0	19	5	1	0
Whitesburg	23	6	2	0	25	6	0	0	18	10	2	1	20	9	2	0
Whitley County	47	7	0	0	48	6	0	0	37	12	5	0	42	5	5	1
Williamsburg	35	11	1	0	34	7	3	3	25	12	5	5	23	9	9	6
Williamstown	43	21	0	0	45	19	0	0	34	23	4	3	31	30	3	0
Willisburg	46	3	0	0	45	4	0	0	40	7	2	0	35	10	3	0
Wingo	35	12	0	1	34	13	0	1	27	19	0	2	28	16	1	3
Wolfe County	50	6	5	0	50	8	1	0	49	8	2	1	48	11	0	1
Woodward County	37	14	3	6	50	9	0	0	42	13	4	1	47	11	2	0
Wurtland	31	8	4	5	39	7	0	2	32	13	1	2	33	11	2	2



## The Flying Dutchman



Virginia sent its distinguished assistant commissioner, Earl Gillespie, to the K.H.S.A.A. Schools of Mechanics for football and basketball officials and Earl was immediately a favorite in both schools. Edgar McNabb did his usual fine job with the football officials. The Dutchman bobbled on a couple of rulings and Kentucky's assistant commissioner, Joe Billy Mansfield, served him a generous helping of crow while the students enjoyed chicken which is much tastier.

Bob Gour, Bowling Green; Hubert Louden, Prospect; Billy Wise, Lexington; and Ken Loudy, of Slemp were freshmen representatives of their areas. Bob Gour is the lad who got the Officials Association organized in Warren County last year; Billy Wise is either the older or younger brother of Jack—we never could find out; Ken Loudy is one of the busiest officials in the mountainous fourteenth region; while Hubert Louden is one of Louisville's crack traffic officers who bosses the 4th and Walnut Street area. Hubert issues jay-walking citations by day and technical reprimands by night.

Bob Gour emphasized the importance of at least one officials association in each area of Kentucky. The formation of these associations which meet weekly or semi-monthly, is one of our prime aims this year. They offer opportunities for individual improvement and good fellowship. As you get together to form your association, bear in mind that unselfish cooperation with fellow officials, coaches and school principals will return the greatest dividends for the sport and you.

Prestonsburg's E. B. May, Jr., proudly announced the opening of a modern public park in his mountain city. Oran Teater already has one in Paintsville, a little higher up the mountain, so it appears that parks are becoming a trademark of progress in eastern Kentucky. Anytime a park is dedicated in the mountains you'll hear a cheer come out of Hazard from Mayor Willie Dawahare. Willie believes in park development like he believes in Christmas dinner.

The 1966-1967 basketball clinics get underway on Sunday afternoon, September 25th, at the Phoenix Hotel in Lexington. Back in 1941, Barbourville's Buford Clark was the clinic director for the K.H.S.A.A. but when Buford became indignant with Adolph (Hitler not Rupp) and went to Canada to join the Canadian Air Force, Commissioner Sanford sent the Dutchman out on his first clinic tour. So it is that this is the twenty-fifth consecutive year and about 50,000 miles of driving for your Dutch interpreter. Incidentally, Buford fixed Adolph good.

Claude Ricketts predicts that more than 300 will attend the Louisville clinic; Stanley Arnzen is shooting for 500 at Newport; and Ernie Chattin says that officials from Ohio, West Virginia, as well as Ken-



**Hubert Louden**

tucky, will jam the meeting room in Paul Blazer High School in Ashland. Hope Bobby Laughlin and Ellis Johnson show up. They are the life of any clinic.

Cliff Harper, of Alabama has made one of the truly great contributions to the standardization and improvement of basketball officiating through his booklet of play illustrations. Last year the Dutchman had only one to show at the clinics but this year anybody with six bits may buy a copy. The K.H.S.A.A. has purchased a supply from the National Federation and they are available to everybody this year.

The first nomination for the Game Guy of 1967 has come from Leo Tierney who praises David Ruzanka for his achievements in football, baseball, basketball and soccer in spite of a birth deformity of his right arm, wrist and hand. Leo is high on this kid with the heart of a lion who is also an honor student. Send your nomination for the Game Guy Award to the Dutchman, Box 36, Jeffersonton.

From Charlie Reed comes a recommendation that James McAfee of Mount Sterling be proclaimed the Corn Cob Pipe of Honor winner for this month. That cob pipe is on Jim's desk right now. For his unselfish service to the players coaches and officials of his area the Dutchman doffs his fedora to a chap who reflects credit on himself and his school.

Individual sports which are very important because of their carry-over value into later life are getting increasing attention in Kentucky. Our citizens, who are retiring earlier and living longer than in years past, must be reckoned with by our leaders.

The Dutchman had a conversation with Fayette County's Judge Joe Johnson who recognizes that more golf courses which may be played with little exertion and maintained economically must come into existence in Kentucky. Look for Judge Johnson to get one of those par-3 courses like Fern Creek built somewhere in his county.

Another mild form of exercise which is engaged in by several million in other parts of the world and our nation is lawn bowling. Kentucky's first lawn bowling green was dedicated in Jefferson County's Carrie Gaulber Cox Park by Judge Marlow W. Cook in August. Already the game is popular and hundreds of men and women in the sixty-five to eighty year old bracket are playing.

A par 3 golf course and a lawn bowling green are easy possibilities in any Kentucky county and make for a happier community life. If you need some help or counsel in getting one started where you live, just call the Dutchman.

Attention Indiana and Ohio officials! The Dutch-



man will conduct the clinics for the Indiana and Ohio High School Athletic Associations in Indianapolis on September 24th and Columbus on November 13th.

Here's one of those little gems the Dutchman likes to close with sometimes—If you are big enough, your troubles will be smaller than you are.

### Minutes of Board Meeting

(Continued from Page Two)

Morton Combs, Don Davis, Ralph C. Dorsey, Sherman Gish, Preston Holland and Don R. Rawlings, Commissioner Theo. A. Sanford, and Assistant Commissioner J. B. Mansfield present. The invocation was given by the Commissioner.

Ralph C. Dorsey moved, seconded by Don Davis, that the reading of the minutes of the June meeting be waived, since the members of the Board had received copies of these minutes. The motion was carried unanimously.

President Sanders stated that he had been honored by the Board in being asked to serve as its president for the 1965-66 school year. He further stated his belief that the Association had made progress during the year, and he thanked the members of the Board for the cooperation which they had given him.

President Sanders stated that the next order of business was the election of the president and vice-president of the Board of Control. Preston Holland moved, seconded by Don R. Rawlings, that Sherman Gish and Don Davis be elected President and Vice-President of the Board of Control respectively by acclamation. The motion was carried, with Mr. Gish and Mr. Davis not voting.

Mr. Holland made appropriate remarks on behalf of the Board concerning the leadership which has been given by President Sanders during the year just ended. Mr. Gish accepted the Board presidency, stating that it was his hope that the program of the Association would continue to improve and expand, and pledging his efforts toward this goal.

The Commissioner made a report to the Board on the receipts and disbursements during the year 1965-66. Copies of the audit, recently prepared by Johnson and Lusk, of Louisville, Certified Public Accountants, had been mailed to the members of the Board. Don R. Rawlings moved, seconded by Preston Holland, that the financial report presented by the Commissioner be accepted. The motion was carried unanimously.

Ralph C. Dorsey, official K.H.S.A.A. delegate to the recent National Federation annual meeting, gave a very complete report on the meeting.

It was the decision of the Board members that the fall meeting of the Board of Control be held in Lexington on October 1.

President Gish stated that an announcement concerning his 1966-67 committee appointments would be made at the time of the next Board meeting.

The Commissioner called attention to the fact that the Board during its June meeting had suggested that he send out a questionnaire concerning the possibility of setting up classes in Cross Country. He stated that a number of schools sponsoring Cross Country teams would not be known until administrators enroll their schools in the K.H.S.A.A. for the forthcoming school year, and that a questionnaire sent during the summer months might not result in complete information being received by the State Office. It was the opinion of all Board members that the questionnaire concerning Cross Country should not be mailed until all schools had opened for the fall term, and that the possible classification of schools in Cross

Country not be considered until the 1937-68 school year.

There was a discussion concerning the possible addition of the Triple Jump to the list of events in Boys' Track. Foster J. Sanders moved, seconded by Ralph C. Dorsey, that the Triple Jump be added to the list of events in Boys' Track. The motion was carried unanimously.

Preston Holland moved, seconded by Don R. Rawlings, that all bills of the Association for the period beginning June 1, 1966, and ending June 30, 1966, be allowed. The motion was carried unanimously.

There being no further business, the meeting adjourned.

## Schools' Ratings on Basketball Officials

The following ratings were received on basketball officials registered with the K.H.S.A.A. during 1965-1966. The numbers following each name represent respectively the number of Excellent, Good, Fair, and Poor ratings given to the official.

Abell, Richard M., 1-1-4-1; Abney, David W., 2-0-0-0; Adams, William M., 1-2-1-0; Akridge, Dean, 2-9-3-2; Alexander, Darryl, 3-6-2-1; Alexander, Howard S., 0-4-1-1; Alexander, Rex, 9-14-3-4; Alexander, Ronnie G., 0-1-1-0; Allen, Ed L., 0-1-0-0; Allen, Harry Gordon, 0-0-0-1; Allen, James D., 0-2-1-0; Allen, James W., 1-1-0-0; Allen, Lowry R., 7-42-2-0; Allen, Nelson R., 16-17-7-5; Anders, Raleigh A., 2-4-1-0; Anderson, Don, 2-0-1-0; Arbuckle, Kenneth E., 0-12-2-1; Arflin, Tracy T., 0-1-0-0; Ansmus, William H., 4-4-2-3; Bailey, Frank, 0-2-0-0; Baird, William, 1-2-0-1; Baker, Billy B., 0-0-1-1; Baker, Robert M., Jr., 1-6-3-2; Balkeom, Otis, 0-1-0-0; Ballaban, Thomas, 12-5-0-0; Bankemper, Thomas, 1-11-0-1; Barker, Walter D., 5-3-0-1; Bates, Bob, 0-3-0-0; Bates, Gardner, Jr., 10-10-3-0; Bates, Ronald B., 0-1-0-0; Bell, Clarence T., 8-9-0-2; Bennett, Bob, 18-24-3-0; Bennett, Gene, 5-2-0-0; Benzinger, Joseph, Jr., 2-10-2-0; Bero, James J., 2-0-0-0; Berry, William 2-3-0-1; Bibb, William C., 5-2-3-0; Bienick, Stanley, 0-2-0-0; Bishop, Heulyn, 15-18-5-3; Blackburn, Adrian, 1-6-4-1; Bland, Kenneth E., 0-2-0-0; Blankenship, Zeb, 1-0-0-0; Blanton, Bob R., 1-1-0-0; Blevins, Boone, Jr., 8-9-1-0; Blevins, Robert L., 3-2-0-0; Bowling, Roy, 9-5-1-0; Boyd, Jerry, 1-3-1-0; Boyles, Paul, 12-15-1-2; Bradshaw, Bill, 3-4-0-1; Bradshaw, Frank C., C., 5-2-0-0; Bradshear, Loy Ray, 13-22-3-5; Brizendine, Vic, 10-21-8-1; Brock, Alben, 2-11-2-1; Brock, John H., 4-4-1-1; Brown, Billy C., 4-14-1-1; Brown, E. C., 7-27-13-2; Brown, J. Carlton, 9-14-4-3; Brown, John W., 11-22-6-1; Browning, Earl E., 15-24-7-6; Browning W. A., 2-2-1-1; Brummett, Joseph W., 8-10-6-4; Bruner, Jack C., 27-21-2-2; Buis, Nathaniel, 7-30-10-0; Burchett, Lanier, 8-15-2-0; Burke, Harry R., 21-23-3-1; Burkhart, James G., 3-3-2-4; Butcher, Douglas, 16-19-2-0; Butcher, Granville, 17-18-5-2; Butler, Donald A., 2-1-1-0; Butler, Jack K., 2-0-0-0; Butler, Robert, 4-26-4-1; Butner, Billy M., 6-30-5-3; Cain, Ron, 2-10-5-3; Caldwell, James A., 10-18-1-2; Callitri, Donald Lynn, 0-2-1-0; Callahan, Tom J., 2-11-2-0; Campbell, George H., Jr., 4-4-4-0; Campbell, John, Jr., 9-17-1-0; Canady, Ray Blair, 11-13-7-0; Canter, John, 0-4-0-0; Cantrell, Hubert E., 4-1-0-0; Caple, Harold E., 4-25-4-3; Carberg, John H., 7-12-6-1; Carney, Robert L., 0-3-0-0; Cartwright, James "Joe" 0-3-1-0; Caruso, Dick, 1-0-1-0; Cash, Randall E., 3-1-2-1; Castle, Jack T., 3-10-2-1; Castle, Quentin, 0-0-2-1; Chandler, Melvin P., 8-16-4-3; Chaney, Bobby L., 5-18-4-3; Chinn, Mike, 1-1-1-0; Cisco, Robert N., 7-5-3-3; Clardy, Barry D., 0-1-0-0; Clark, Kenneth R., 0-2-0-0; Clark, Owen B., 2-2-0-0; Clark, Tom, 8-5-1-1; Claypool, Thomas Wayne, 0-1-0-0; Clemmons, Sam, 1-4-0-0; Click, Edgle, 0-3-1-0; Click, Ezra F., 0-4-1-4; Cobb, Michael B., 2-10-7-3; Cochran, Roy H., Jr., 2-4-5-1; Cole, Dickie, 3-8-10-1; Coleman, Daniel Lee, 2-8-6-1; Coleman, James E., 0-1-0-0; Colley, Lynn, 0-1-0-1; Collier, Burnard, 2-3-0-0; Collier, Virgil, 0-0-1-1; Collins, Jack, 0-1-1-0; Collins, C. E. "Jack", 3-2-2-3; Collins, Hubert, 8-23-4-1; Collins, Larry, 2-4-2-0; Combs, F. D., 11-12-2-0; Combs, John, 1-2-1-0; Combs, Keith A., 10-12-2-0; Combs, Wilmer Eugene, 9-12-5-0; Condra, Kenneth P., 13-8-3-1; Conley, George, 4-1-0-0; Conley, Lester "Art", 1-1-0-0; Conley, Ted L., 10-18-3-0; Conn, Jerry L., 0-0-0-1; Cooksey, Marvin, 1-4-1-0; Cooper, John F., 0-1-3-1; Cooper, Warren, 13-1-0-0; Copley, Sidney M., 8-3-0-4; Cornelison, Walter L., 2-2-5-2; Cornett, John M., 3-1-0-0; Correll, Elmer Eugene, 2-0-0-0; Cox, Alva J., 3-3-1-0; Cox, Colin, 3-4-0-2; Cox, Rufus A., 2-7-1-1; Craft, Bill, 0-4-0-2; Crager, Bobby F., 11-11-2-0; Crawford, Donald, 14-20-6-2; Creech, Robert Lee, 0-2-1-0; Creekmore, Ken, 2-3-2-0; Croft, E. Lewis, 4-23-2-0; Culp, Ronald D., 2-8-1-1; Culp, Willard E., 0-3-0-0; Cundiff, John, 0-8-4-0; Cunningham, Julian R., 5-4-1-1; Curtis, Douglas E., 0-2-0-1; Dame, L. J., 0-14-2-1; Daniel, Roger T., 1-2-3-0; Daniels,



Bob, 6-20-2-1; Dann, Nick, 6-3-1-1; Daugherty, Elwood, 5-6-1-1; Daum, Charles A., 0-1-0-0; Davenport, Bowman, 5-6-1-1; Davis, A. J., 0-1-0-0; Davis, Harold T., 1-18-1-0; Davis, Ralph C., 2-0-0-0; Davis, Ralph E., 17-16-3-0; Dawson, Alby, 3-1-0-0; Day, Bill, 9-21-7-5; Day, Jack L., 0-3-0-0; Day, G. C., 0-1-0-0; Day, Jack L., 0-3-0-0; Day, G. C., 0-1-0-0; Deaton, Chas., Jr., 1-1-1-0; DeGroot, James A., 0-1-0-0; Delconte, Art, 4-8-1-0; Dement, Jerry D., 0-0-1-1; Denham, Ronald, 1-31-10-3; Denny, Robert, 0-3-0-0; Denney, Murrell C., 0-3-2-3; Derrickson, Richard, 4-6-3-1; DeVary, Bill, 17-11-3-4; Dickson, Tom, 1-8-0-1; Dieterle, Owen, 4-14-6-4; Dills, Bernie, 2-2-2-0; Dingus, Charles, 0-0-1-0; Disken, Jim, 0-7-2-0; Divine, Wayne L., 0-3-0-0; Dixon, Billy M., 2-1-0-0; Dobson, Kenneth, 1-8-3-3; Doctor, R. P., 0-2-0-0; Dorsey, James, 6-22-6-1; Dotson, John B., 0-1-0-1; Downey, James B., 0-2-2-1; Downey, Jim, 2-21-3-2; Drake, Dick, 10-34-3-2; Driskell, Earl, Jr., 10-22-3-8; Duerson, William R., 9-20-2-2; Duff, Birchell, 8-3-2-0; Duff, Earl, 15-15-3-2; Dunaway, Adrian, 0-2-0-1; Duncan, Earl S., 0-0-0-1; Duncil, Charles, 8-13-2-3; Durbin, Hade, Jr., 11-18-1-1; Duvall, James W., 1-2-1-0; Duvall, Thomas Jay, Sr., 13-25-14-6; Dyer, Joe R., 6-15-2-0;

Eades, Jimmie, 12-30-7-3; Edwards, Don A., 35-39-1-0; Ellington, James E., 2-16-3-4; Elliott, Carroll L., 21-27-8-9; Elliott, Eric, 1-2-2-1; Elliott, Humphrey T., 0-19-0-1; Ellis, Johnny, 0-2-1-0; Elmore, Jimmy A., 2-2-1-0; Emery, George A., 1-0-0-0; England, Larry A., 0-1-0-0; Ernst, Edward R., 0-4-0-0; Evans, Wade, 0-5-0-1; Everett, Billy N., 6-4-2-3;

Farish, Merlin J., 5-5-3-2; Farlee, Harold "Butch", 1-1-0-0; Farley, Jimmy, 12-2-3-3; Farmer, Billie, 2-4-4-0; Farmer, Jack, 11-17-1-1; Ferrell, Doc, 36-11-3-2; Ferrell, Lewis Jimmy, 0-3-4-0; Finley, Albert R., 4-29-4-4; Finley, Ron, 6-13-0-1; Finley, Sam, 0-2-3-0; Flowers, Randal B., 1-4-1-1; Flynn, Robert D., 32-21-7-2; Foster, Berryman E., 1-3-2-0; Foster, Bob, 47-26-7-1; Foster, Joseph W., 1-1-6-0; Fowler, Ronald S., 0-2-0-1; Fraley, Bill, 1-8-2-0; Francis, Fred Louis, 1-5-2-2; Francis, William Lewis, 0-0-2-0; Frazier, Roy D., 0-1-0-0; Fredericks, Rex, 3-13-1-0; Freese, Oliver T., 2-5-2-0; Freppon, Thomas E., 1-0-0-1; Frey, William R., 0-3-0-0; Fritz, Robert G., 2-2-2-0; Fritz, Sherman, 25-39-12-3; Frye, Gil, 7-18-5-3; Fryrear, David, 2-3-1-0; Fugate, E. Hugh, 3-1-1-0; Fuller, John R., Jr., 5-16-5-2; Furguson, William W., 1-11-3-1; Gabbard, John B., 2-1-2-1; Gaines, Curtis, 0-1-0-0; Gaines, Harvey, 0-2-1-0; Gaither, Gene, 6-22-2-3; Galuk, Walter M., 6-16-3-1; Gardner, E. Howard, 3-9-0-0; Gentry, Dale J., 1-7-0-0; Gettler, John F., 0-13-6-6; Gibson, Carl, 0-5-0-0; Gibson, Fred W., 2-4-4-1; Gilbert, Gerald L., 3-4-35-3-1; Gilbert, Lawrence, "Butch", 6-8-0-0; Gilbert, William Curtis, 0-1-1-1; Gill, Joe, 2-1-2-2; Gilman, Ronald R., 1-5-0-0; Giordano, Al, 1-2-1-0; Golden, Billy Joe, 80-20-1-1; Goley, Jim, 14-34-7-4; Gooch, Lloyd E., 3-12-5-0; Goodall, Walter J., 1-5-3-1; Goode, Earl A., 11-8-2-0; Gordon, Billy K., 3-4-0-0; Gordon, Levi J., 0-1-1-0; Gossett, Jack, 7-17-2-1; Gour, Bob, 12-30-6-0; Gover, David B., 0-18-12-4; Grace, Hickory, 10-4-2-0; Graham, Jim, 3-7-2-1; Graham, Ronnie, 8-13-3-4; Graves, Preston H., 0-2-2-2; Gray, Raymond, 3-5-2-0; Green, Wait, 31-13-2-1; Greer, Tom, 0-0-0-1; Griffin, Dennis B., 0-0-1-0; Griffith, Rudolph, Jr., 0-1-0-0; Grigsby, Pete, Jr., 9-14-2-0; Grote, Hal, 0-2-0-1; Gustafson, Al "Gus", 1-1-1-0;

Hagan, Joe "Red", 2-9-4-1; Hagedorn, Thomas, 3-8-4-0; Hagen, William R., 1-0-0-0; Halbert, Hubert, 0-1-0-0; Hall, Billy Joe, 4-10-2-1; Hall, Dave, 0-1-0-0; Hall, Elvis, 0-6-0-0; Hall, Jack R., 3-1-0-0; Hall, Kenneth, 1-3-0-0; Hall, Mac, 0-4-0-1; Hall, William W., 0-4-0-1; Ham, Ronald, 1-0-0-0; Hamblin, Anthony, 0-0-1-0; Hamm, Gerald, 6-29-8-5; Hamm, Harold D., 2-4-2-0; Hamm, L. E., 0-6-2-2; Hammons, Norman, 9-23-5-3; Hardin, Carl Ray, 0-6-3-5; Hardin, Don G., 10-14-7-2; Hardin, William R., 0-4-0-0; Harned, Vic, 29-15-4-1; Harper, Robie, Jr., 31-21-2-1; Harrell, Bill D., 0-1-0-0; Harris, Billy, 2-15-5-2; Harris, Wayne, 0-2-0-0; Harrison John L., 10-13-3-1; Hatfield, Cecil E., 4-4-0-0; Hatfield, Dennis, 0-0-1-0; Hatler, Donald W., 0-6-2-0; Hausfeld, Walter, 0-2-1-0; Hawkins, Will A., 0-0-1-0; Hayden, Samuel J., 4-25-9-3; Hayden, Lloyd, 0-1-4-1; Haynes, John, 0-7-2-0; Haynes, William T., 0-11-3-0; Heitzman, Warren E., 1-2-1-0; Heldman, John, Jr., 1-0-0-0; Henderson, Robert L., 0-0-1-4; Hendon, Charles, 0-2-0-0; Hendricks, Dudley, 0-1-0-0; Hennegan, J. E. Michael, 2-0-1-0; Henson, Tony C., 4-12-6-2; Hewitt, B. T., 17-31-4-7; Hicks, Floyd E., 0-6-0-0; Hill, Earl F., 9-24-6-0; Hines, Douglas, 2-6-3-1; Hinton, Henry E., 8-13-2-1; Hisle, Charlie R., 1-0-2-0; Hitt, Billy D., 0-2-0-0; Hobbs, Charles V., 7-19-0-1; Hobbs, Wm. Paul, 0-1-0-0; Hofstetter, Joe, 13-8-1-0; Holeman, Bill R., 3-9-2-0; Holland, David, 0-2-0-1; Holland, David W., 0-0-1-3; Holt, Robert E., 0-6-1-1; Holthouser, Ora L., 5-12-2-1; Hooks, Bob, 0-0-0-1; Hopkins, B. L., 1-3-8-3; Horn, Everett, Jr., 2-10-1-0; Howard, Bruce L., 10-13-1-1; Howard, Carl, 2-23-6-3; Howard, Henry D., 0-1-0-0; Howard, Jimmy D., 0-8-0-0; Howard, Robert E., 5-0-0-0; Hubson, Oscar, 1-0-0-0; Huddnall, William, 0-1-0-0; Huff, Cordell, 7-6-4-5; Hughes, Charles, 15-5-2-1; Hughes, Paul P., 25-31-1-0; Huiet, Fred "Whitey", 13-2-0-0; Hume Charles E., 6-23-12-4; Hunley, Neil P., 12-19-3-0; Hunt, Jack L., 3-2-0-0; Hurley, Robert, 0-6-1-1; Hutchens, Jim, 0-3-0-0; Hunter, Jim, 2-4-0-1; Hyatt, Bob, 15-21-1-4; Hyland, F. D., 1-2-0-0;

Idol, Billy Joe, 6-3-4-3; Ingraham, Gary J., 1-1-0-0; Inman, Briscoe, 5-12-6-6; Irwin, Charlie, 17-16-0-2; Jackson, Edward, 3-5-1-0; Jahngren, Robert E., 1-0-0-0; James, Carl Edwin, 0-2-0-0; James, Gene, 6-1-1-0; Jenkins, James D., 2-8-0-1; Jenkins, Kean, 4-4-0-0; Johns, Jerry, 0-0-1-0; Johnson, Harry B., 2-1-0-0; Johnson, Harvey K., 2-2-0-2;

Johnson, Jack D., 2-7-1-0; Johnson, James M., 6-20-4-0; Johnson, Leroy, 0-2-3-0; Johnson, Ronald L., 1-1-3-0; Johnson, W. Bernard, 7-27-4-2; Johnson, Walter, 37-28-4-0; Jones, G. Carson, 5-14-5-2; Jones, Joe S., 0-3-1-1; Jones, John Howard, 1-0-0-0; Jones, Paul, 6-9-3-2; Jones, Robert L., Jr., 1-1-0-0; Jones, William L., 9-9-2-0; Judy, Carl D., 0-0-1-0;

Keatley, James H., 0-0-1-0; Keeton, C. E. "Buck", 2-5-5-1; Kelly, Charles R., 1-4-4-6; Kelly, Robert J., Jr., 0-5-5-1; Kimmel, Jerry, 35-24-1-1; King, James A., 25-27-1-2; King, Raymond H., 0-1-0-0; Kirkpatrick, Charlie V., 0-0-0-1; Kloufetos, Spiro J., 2-4-4-2; Knight, Bill, 8-28-1-4; Kuhl, Lawrence, 18-26-0-0;

Lambert, Irvin G., 3-9-1-1; Larsen, George, 2-2-2-1; Laubheimer, Don T., 25-31-3-1; Lawson, Rondell, 17-8-1-1; Layne, Bert, 0-3-1-0; Lee, Robert L., 10-7-2-0; Lee, Thomas J., 2-0-1-0; Lequire, Harold M., 15-10-2-0; Lester, J. L., 0-5-2-1; Lile, Clyde F., 0-4-1-1; List, Frank A., 20-13-0-2; Long, Bill, 3-11-2-0; Long, Robert F., 0-0-1-1; Longo, Dick, 7-0-0-2; Louden, Hubert C., 23-34-5-5; Loudy, Kenneth, 19-17-3-1; Lowe, Gene T., 25-35-2-0; Lowe, James D., Jr., 0-0-1-0; Lucas, Gene T., 16-12-1-2; Lucas, Jack G., 1-4-0-0; Luebbers, Leonard, 0-2-0-1; Lusby, George, 0-1-0-0; Lytle, William Price, 12-21-5-1;

McAllister, Jack, 0-1-0-0; McAnely, David F., 4-16-3-0; McBride, W. Kenneth, 3-8-5-1; McCargo, Frank, 10-24-4-5; McClure, William Scott, 16-21-6-1; McCowan, Connell, 1-2-1-0; McCoy, Hayse, 15-31-4-3; McGehee, Gordon, 12-23-2-0; McGlasson, Galen, 1-8-1-1; McGlothlin, Leonard, 0-1-0-0; McGuire, Herbert W., 1-4-3-1; McKenzie, Robert, 4-14-2-5; McKenzie, Robert L., 0-1-0-0; McKinney, Adelle F., 0-3-0-0; McLane, Albert I., 35-36-4-5; McLean, Gordon, 22-15-3-2; McMillin, Larry L., 1-0-0-0; McNamee, Jack, 0-3-1-0; McPike, Ray S., Jr., 1-0-0-0;

Madden, McElroy, 0-0-0-1; Madon, Robert Lee, 21-20-3-0; Mahan, Carle E. "Buddy", 24-13-2-3; Maines, George E., 22-26-10-5; Marshall, Glenn Roger, 0-0-0-2; Marshall, Tivis N., 3-3-0-1; Martin, Carl Thomas, 0-1-0-0; Martin, Delano, 0-1-0-0; Martin, Sam, Jr., 3-7-0-1; Martin, Wilfred R., 0-0-1-0; Mashburn, Mendal Laine, 0-2-1-0; Mattingly, Bernard, 1-0-0-0; Mauney, Bill, 0-8-5-0; May, E. B., Jr., 22-24-0-3; Mayes, Edward, 4-7-6-3; Mayfield, Clarkie, 8-3-2-2; Maynard, Joe E. Dr., 5-16-4-0; Maynard, John W., 3-2-2-0; Maynard, Kenneth, 2-3-0-0; Maynard, Lonnie, 0-1-0-0; Meade, Foster "Sid", 30-9-4-3; Meadows, Marvin, 28-24-9-7; Meek, Walter E., 0-1-0-1; Meeks, Jack, 1-7-1-0; Melear, Leland, 0-3-0-0; Meredith, Denny E., Jr., 19-27-6-5; Metcalf, Earl L., 7-11-0-0; Metzger, Don, 7-4-4-0; Meyer, Bud, 1-6-3-0; Mickey, Elbert W., 0-1-0-0; Middleton, Johnny, 8-10-2-3; Milburn, Daniel L., 2-21-11-0; Miles, Marvin, 0-0-1-1; Miles, Robert J., 0-1-0-1; Miller, Bob, 24-13-0-0; Miller, Ferrel, 6-14-4-3; Miller, John D., 4-1-0-1; Miller, L. O., Jr., 4-27-0-0; Miller, Rex J., 1-3-2-1; Miller, Victor Leon, 3-5-1-0; Miracle, Ed, 2-4-5-0; Mitchell, William N., 15-21-0-1; Monahan, Ed., 2-0-1-0; Montgomery, Chester, 23-29-2-1; Montgomery, Gordon D., 0-1-0-0; Mooneyhan, James H., 2-4-3-0; Moore, James H., 1-0-0-0; Moore, Robert, 15-38-7-4; Moore, Roy, 8-14-2-1; Morris, Charles, 2-0-0-0; Morse, Richard K., 25-28-12-3; Moser, Rudy Clay, 28-46-0-0; Mudd, Ed, 13-13-5-3; Mulligan, J. T., 0-9-3-1; Munk, McKee, 0-1-0-0; Murray, William D., 0-2-0-0; Murrell, Allen L., 5-19-3-3;

Namcin, John, 0-4-1-1; Nash, Dennis B., 6-17-4-3; Neal, Gene, 9-24-6-1; Neal, James, 0-7-2-0; Nevel, Vernon E., 5-16-8-2; Newman, Bill, 8-2-1-0; Newman, Larry, 1-1-1-1; Newsome, Lawrence, 1-0-0-0; Nixon, James W., 9-33-5-6; Nord, Ed, 15-28-3-0; Norwood, Donald V., 0-0-1-0; Norwood, Thomas R., 2-4-2-0;

Oldham, H. John, 1-2-1-2; Omer, Harold G., 5-2-3-3; O'Nan, Harold L., 0-5-1-0; O'Nan, Norman, 4-19-2-0; Osborne, Larry Joe, 0-4-0-0; Osborne, Virgil F., 8-5-0-0; Overton, Frank, Jr., 0-0-1-0; Owens, Bruce E., 2-1-0-0; Owens, Thomas J., 0-0-0-1;

Pace, Donald, 0-0-1-0; Pack, Donald, 7-9-2-0; Pack, James, 32-37-2-5; Padgett, R. K., 3-14-1-0; Page, Richard, 0-1-2-0; Pardue, Robert E., 1-1-0-0; Park, J. M., 4-6-5-4; Parker, Joseph H., 0-2-0-0; Parrish, Dale, 2-3-1-0; Parrott, Lanny L., 2-4-8-2-1; Parson, Roy, 0-0-0-2; Patterson, Bill, 0-2-2-0; Payne, Gayle, 2-7-1-0; Pearson, Ozias, 0-3-0-0; Peay, Curtis, E., 0-3-0-3; Peck, Harold, 1-1-1-0; Peecher, W. Lloyd, 0-3-1-0; Peeno, Harry, 0-8-1-0; Pelphrey, Jack, 8-9-0-0; Pence, Charles E., 1-5-0-2; Pence, William Jerry, 0-1-0-0; Penix, Herbert, Ferrell, 15-14-6-0; Penrod, Joe B., 2-12-5-1; Pergem, Bernard "Nard", 17-10-1-0; Perkins, James Ernest, 3-3-2-2; Perry, James E., 7-23-2-1; Peters, Arthur, 1-0-2-0; Petett, Frank M., 2-0-2-0; Phelps, Ralph "Rudy", 18-17-6-1; Phelps, Ray, 4-4-3-0; Pieratt, Hollie E., Jr., 0-1-0-1; Pietrowski, Paul, 1-3-0-0; Ping, Denton Perry, 0-3-3-0; Pogue, Ivan G., 2-16-4-2; Points, Charles, 2-19-2-1; Pollock, Carl L., 1-0-0-0; Polston, Billy Dale, 0-1-0-2; Poppas, Nickolas, 2-0-3-1; Powell, Logan, 2-2-0-0; Prater, Rondel R., 1-3-0-0; Prather, Bill, 17-19-4-3; Prewitt, Allan, 1-1-0-0; Price, Charles A., 1-5-3-0; Price, James E., 3-24-5-0; Proffitt, Lawrence K., 0-0-1-0; Purcell, Billy D., 0-3-3-0;

Rader, Douglas, 14-6-4-2; Radjnas, Eddie, 1-7-0-0; Radjnas, Stan, 5-5-1-0; Raikes, Larry D., 6-2-2-0; Rainey, Jimmy, 8-5-1-1; Rakeb, Bob, 4-6-1-1; Ramey, Herbert Dean, 2-7-2-1; Rankin, James M., 0-1-0-0; Rawlings, Harold, 4-8-3-1; Rawlings, Charles, 1-3-3-0; Reed, Charles R., 27-23-4-2; Reed, Gordon "Moe", 25-20-6-1; Reinhardt, Myron Stanley, 40-26-2-0; Reschar, John V., Sr., 0-1-0-0; Rexroat, Jerry Lawrence, 4-13-4-0; Rhodes, Cecil, 5-13-4-3; Rice, William, Jr., 0-2-0-0;



## Registered Football Officials of the K.H.S.A.A.—1966

(List Compiled September 1)

If the telephone number is given for an official listed, it is the home phone number unless otherwise designated. If two numbers are given, the first number is that of the home phone.

- Rice, William L., 2-1-0-0; Richardson, Charles E., 5-3-1-0; Rickard, Bob, 1-6-0-0; Ricketts, Claude O., 10-30-9-5; Riggs, Jason M., 1-1-0-0; Riggs, Floyd L., 2-6-2-0; Ring, Bill, 16-12-1-4; Rister, Edgar L., 15-16-4-2; Ritter, Goebel, 14-1-0-0; Robertson, William R., 0-1-3-1; Robinson, Don L., 2-7-1-0; Roby, Joseph L., 1-19-2-0; Roeckers, Bernie, 0-3-0-0; Roesel, Joseph, 0-2-1-0; Rogers, Howard D., 30-26-2-1; Roller, Otis C., 2-7-0-1; Rolph, Harold J., 3-1-0-1; Romer, Dick, 2-2-1-0; Rose, Bernard, 0-6-2-0; Rose, Wally, 11-7-1-1; Rossman, Robert L., 0-1-0-0; Rothfuss, Richard, 0-1-0-0; Rowe, Steve, 0-1-1-0; Rubarts, Leland G., 1-22-4-2; Runyon, Tommy Dean, 3-6-1-1; Rush, Rex E., 0-0-1-1; Russell, Allen, 19-32-0-0; Russell, Joe, 8-11-4-3;
- Sagers, Robert M., 2-2-1-1; St. Clair, Robert L., Jr., 29-13-4-1; Salyer, Henry E., 0-6-3-1; Sams, Glenn, 0-1-0-1; Sanders, Mel, 7-7-0-0; Saylor, Lanny R., 3-1-1-0; Schad, Jim, 0-4-0-2; Schlich, Paul E., 10-18-2-4; Scott, Craig, 1-3-0-0; Scott, Kenneth E., 2-0-1-0; Scott, Sidney, 0-1-2-2; Seavers, Joe, 0-1-0-0; Sellier, Ed, 4-7-0-2; Selvy, Curt, 11-6-0-0; Settle, Roy G., 21-16-4-1; Sexton, Steven C., 9-5-1-0; Sharp, Lloyd, 9-15-2-3; Shartzler, E. Philip, 8-9-0-0; Shaw, Earl, 34-28-3-2; Sherrow, Winston G., 2-5-2-0; Shewcraft, Clifford W., 0-1-0-1; Shipley, Charles, 1-0-2-0; Shope, Lowell M., 2-4-0-0; Showalter, John, 0-1-0-1; Shuck, Thomas G., 11-19-5-0; Silliman, Wm. Gerald, 1-7-0-5; Simpson, Fred C., 2-5-3-3; Sims, Frank D., 6-7-1-1; Singleton, Bobby, 2-6-5-1; Singleton, Ronnie H., 0-2-0-1; Sizemore, Aster, 1-2-1-0; Slinker, Dennis R., 0-1-0-0; Small, Bill, 10-11-5-2; Smith, C. W., 0-1-0-0; Smith, Edgar J., 0-1-0-0; Smith, Elijah, 0-1-0-0; Smith, Jack David, 1-1-0-1; Smith, Roy M., 1-15-2-1; Smith, W. Jack, 21-33-5-1; Smith, Wayne N., 39-11-3-0; Smith, Willard N., 40-13-3-0; Smith, William E., 0-2-2-0; Smithson, Richard A., 22-30-4-4; Snorton, Claude, Jr., 0-0-1-0; Solomon, Jim, 6-14-1-0; South, Douglas E., 1-0-0-0; Sparks, Bobby, 0-4-0-0; Sparks, Keith Emanuel, Jr., 0-1-0-0; Spaulding, Stan, 4-8-0-1; Speck, Michael E., 14-38-6-8; Spencer, Irv, 16-28-7-4; Spiceland, S. E., 3-18-2-0; Spoonamore, Jim, 2-23-5-1; Stauffer, Frank, 0-2-0-0; Steenken, William R., 3-11-0-0; Stephens, Herbert D., 1-1-1-2; Stephenson, Harry, 3-8-0-0; Stephenson, Thomas H., 0-1-2-2; Stethen, Jim, 1-6-1-4; Stevens Alex, 6-9-0-0; Stevens, James L., 0-0-1-0; Stewart, E. James, 0-0-1-0; Stiff, Maurice, 21-28-9-2; Strikeleather, Clyde L., 13-18-1-1; Stines, Ray A., 2-8-2-1; Stinson, Charles L., 1-2-0-0; Stith, Houston, 19-23-4-2; Stoess, Henry L., 7-6-0-3; Stokes, Bob, 7-9-0-2; Stokes, Tommy G., 1-0-0-0; Stokes, William R., 1-0-0-0; Strain, Richard, 10-20-5-1; Strong, Arnett, 54-16-1-0; Sucietto, Richard, 0-4-1-1; Sullivan, Don Chris, 26-15-3-3; Summers, Charles R., 0-0-1-0; Sumner, Carl, 1-2-0-0; Suthpin, William O., 0-1-0-0; Switzer, Richard J., Jr., 0-8-5-0;
- Tackett, Jay, 3-1-0-1; Tackett, Layne, 1-4-1-2; Tarlton, Thomas, 5-9-6-3; Taylor, Billy Joe, 1-0-0-0; Taylor, Ed, 16-18-0-1; Taylor, Frank, 1-1-0-0; Taylor, Rogers E., 9-12-0-0; Thomas, Frank M., 0-1-1-0; Thomas James E., 0-0-1-2; Thomason, Bennett, 2-5-2-0; Thompson, Allen, 0-0-1-0; Thompson, Houston, 0-2-2-0; Thompson, Jack, 0-7-2-1; Thompson, Kenneth Edward, 5-4-0-0; Thompson, Ralph, 0-3-2-0; Thompson, Thomas A., 19-11-4-1; Thompson, Tom D., 3-3-0-1; Tinsley, Marion F., 14-28-6-4; Todd, Paul, 0-0-1-0; Torian, Virgil, Jr., 0-0-1-0; Travis, Tom A., 0-0-1-0; Trimer, Norman E., 2-5-2-2; Triplett, Herb, 52-16-1-0; Trout, Justin, D., 0-2-0-1; Tully, Pat, 13-12-2-0; Turner, Aaron, 5-9-4-1; Turner, Bruce, 1-2-0-0; Turner, James W., 0-2-0-0; Tyre, Donald, 8-10-1-2; Uralge, Richard, 4-18-1-0;
- Vanover, J. W., 4-12-2-0; Vannerson, Duke, 0-10-3-2; Vanover, Walter S., 5-7-1-0; VanZant, Jim, 18-14-0-0; Varble, William, 0-11-5-0; Vaughan, Ronald, 0-1-0-0; Vaughn, Teddy Ray, 3-6-5-1; Vermillion, C. D., 7-12-6-1; Vescovi, Raymond B., 4-8-1-0; Vice, Charles G., 0-3-1-0; Vincent, Johnny, 9-3-0-0; Vincent, Johnny B., 2-9-5-1;
- Wagner, Marvin Rudy, 4-14-1-1; Waide, Harry D., 0-5-1-0; Wallen, Howard W., 0-2-0-0; Waller, Bobbie E., 13-19-11-4; Walsh, Bernard N., 0-1-1-0; Walton, Roy, 4-11-4-0; Ward, Robert L., 2-13-2-1; Warfield, James A., 1-0-0-0; Warner, Marvin, 0-1-0-0; Warrix, Lewis H., 7-9-3-1; Watts, Paul A., 3-6-3-2; Wearren, Wade H., 2-5-1-1; Weathers, Charles, Jr., 1-3-2-0; Weaver, Ray, 4-17-0-0; Weiner, Dick, 1-8-0-1; Welch, Bill, 0-2-1-1; Wells, Glenn, 1-1-0-0; Wells, Milford, 1-0-0-0; Wesche, James A., 1-1-0-0; West, John, 5-16-4-2; Weyer, James G., 0-9-1-0; Wheeler, Joe, 0-0-1-0; White, Billy Dean, 0-0-1-0; White, Carl W., 0-1-0-0; White, David B., 4-7-7-1; White, Nelson H., 3-0-1-0; Wickham, James Robert, 6-9-5-2; Willett, Art, 2-1-0-1; Willey, Harold L., 1-1-0-0; Williams, Benny D., 0-1-0-0; Williams, Bobby, 0-3-0-0; Williams, Jack S., 7-9-5-0; Williams, Jack A., 0-6-0-0; Williams, James H., 0-3-0-0; Williams, Paul W., 5-2-0-0; Williams, Roger, 13-15-5-2; Williams, Smythe Jack, 0-1-0-0; Williams, Tex M., 1-0-0-0; Williams, Willie H., 0-1-0-0; Williamson, Fred, 0-1-0-0; Willis, Robert A., 2-0-3-1; Winchester, Roy L., 33-23-1-1; Winfrey, Shelby, 25-16-3-1; Wingfield, Felix G., 2-5-0-0; Winnecke, John E., 0-1-0-9; Wirtz, Howard A., 6-11-2-2; Wirtz, Leonard F., 2-9-0-0; Wise, Billy V., 21-16-1-0; Wise, Jack, 20-12-3-2; Withrow, Raymond, 5-8-2-0; Wolfe, Paul A., 1-2-0-0; Wolfe, Roger, 0-3-2-0; Wood, James Randall, 0-1-0-0; Woods, Gene B., 8-12-5-1; Woodward, Billy, 3-17-0-2; Woosley, Travis, 6-34-4-2; Wootton, George B., 0-1-1-0; Woprice, Ronald J., 0-4-0-0; Wray, Robert, 0-4-0-0; Wright, Billy J., 6-6-9-0; Wright, H. W., Jr., 1-1-1-0; Wright, Larry L., 1-1-0-0; Wurtz, Emil, 0-1-0-0;
- Yates, Virgil, 0-1-0-0; Yelton, Gene B., 3-1-0-1.
- Adams, Calvin K., 5891-B Adams, Fort Knox, 4-8287, 4-3354  
Adams, Charles David, 5702 Indian Rock Rd., Louisville, 964-5413  
Albright, James R., Route No. 3, Shelbyville, 633-4614 Frankfort, 564-3256  
Allen, Clyde E., Jr., 5215 Coolbrook Rd., Fern Creek, 239-0190, Chicago 372-6969  
Allison, Roy, Entrada Dr., Route 3, Frankfort, 564-3740 (Bus.)  
Anders, Raleigh A., General Delivery, Corbin, 528-2861, 528-3912  
Anderson, Glenn S., Jr., Box 323, Prestonsburg, 886-2106, 886-3981  
Argo, Charles, 523 Bailey, McKenzie, Tennessee, 352-2572, 686-1531 ext. 3239  
Atkinson, Charlie, 50 Queen Ave., Lexington, 252-3298, 252-2626  
Ayres, Edward L., 625 Laramie Road, Lexington, 277-2333, 277-1161  
Ballaban, Thomas, 1103 Archland Dr., Cincinnati, Ohio, 522-3024, 761-7600  
Barlow, Bill, Box 214, Millersburg  
Bartels, John, 423 Third St., Dayton, 581-4250  
Battisti, Edward A., 7759-A Littlefield Loop, Fort Knox, 4-3790, 4-3354  
Beck, C. Norman, 2588 Filson Ave., Louisville, ME 4-1737, JU 2-3511 ext. 352  
Beheler, Donald S., 311 Springhill Dr., Paris, 987-1728, 252-2250 ext. 3236  
Bell, Clarence T., 1228 So. 41st., Louisville, 778-7792, 582-5573  
Bennett, Howard, Route No. 6, Mayfield, 247-3309, 247-3510  
Benzinger, Joseph, 3502 Behymer Rd., Cincinnati, Ohio, 752-3932, 742-2191  
Bero, James J., Box 968, Williamson, W. Va.  
Berger, John D., Jr., 26 Myers Lane, Allison Park, Pa., 767-4931, 621-3509, ext. 264  
Bivins, George W., 3105 Talisman Rd., Louisville, 459-5111, 895-0525  
Blackburn, Adrian, 407 Scott Ct., Prestonsburg, 886-2401  
Blackburn, Tennyson, Box 2157, Williamson, W. Va.  
Blanton, Homer, 138 New Hampshire, Ashland, 324-1730, 324-4645  
Blosser, Kermit A., 80 Maplewood Dr., Athens, Ohio, 593-3007, 594-6452  
Bocook, Earl, 1103 Beech St., Kenova, W. Va.  
Boeh, Bill, 3804 McNicholas Ave., Deer Park, Ohio, 791-8880, 821-9400  
Boemker, Bob, 69 Thompson Ave., South Ft. Mitchell, 331-1708, 721-2700 ext. 350  
Bordy, Philip, 3308 Stratford, Louisville, 458-7005, 582-3994  
Bostick, Lord M., Jr., 419 West 12th St., Bowling Green, 843-3319, 843-6573  
Bowman, Earl C., 689 Mt. Vernon Rd., Lexington, 266-8111, 277-7157  
Boyles, Jerry F., 2700 Algonquin Ave., Ashland, 324-6995, 324-1111 ext. 5443  
Brashear, Loy Ray, Route 1, Glendale, 854-2921, Radcliff 351-3147  
Brizendine, Vic, 2711 Lakeside Drive, Louisville, 454-6843, 589-9111  
Brock, John H., 611 Virginia Ave., Pineville, 337-2453, 337-2439  
Brotzge, Maurice J., 3712 Lexington Rd., Louisville, 893-7206, 896-4461  
Brown, Bill, 2553 Dell Road, Louisville, 458-4857, 583-0681  
Brown, Herman G., Route No. 2, Shelbyville, 633-2516, Louisville, 458-7285, 582-1881  
Bryant, Rudy C., 1924 Goldsmith Lane, Apt. No. 20, Louisville 589-9177  
Bullock, Edmund T., 2622 Claysmill Rd., Lexington, 277-0145, 252-7963  
Bunch, William O., 4820-D Lee Village, Fort Campbell, 798-3993 (Bus.)  
Bunn, Gary L., 2718 First Ave., Huntington, W. Va.  
Burke, Daniel F., 1115 Maureen Lane, Cincinnati, Ohio, 471-9631, 621-7411  
Burke, David Dean, 3137 Carter Ave., Ashland, 324-8846  
Burke, Harry, 328 Arnold Ave., Prestonsburg, TU 6-2796, TU 6-2385  
Burkhart, James G., Box 169, Loyal, 573-1437, 664-3444  
Butler, James Edward, 401 Barbour, Providence, 667-2296, 669-4206  
Butler, Robert, 1330 Maple Ave., Owensboro, 684-7016, 684-5285  
Carr, Billy W., Longview Drive, Franklin, 586-6355  
Cain, John Wiley, 226 Field St., Cumberland, 589-4102  
Cain, Paul D., 3196 Lookout Circle, Cincinnati, Ohio, 321-7246, 871-6103  
Carr, Virgil Lee, 2924 Fitzwater Drive, South Charleston, W. Va.  
Canaday, Jacy Glenn, 503 Brown, Vine Grove, 877-5387, 877-5537  
Canon, Jerry, Box 326, Sharon, Tennessee, 456-2431, 696-5521  
Canter, John, 2826 Esther Blvd., Louisville, 451-8218, 587-8862

- Canady, Ray Blair, Court Square, Box 244, Barbourville, 546-4765, 564-3801
- Carlberg, John H., Box 234, Muldraugh, 942-2723
- Carlson, David A., 2916 Washington, Paducah, 444-7943, 444-6311 ext. 408
- Carroll, Jerry R., 2323 23rd St., Nitro, W. Va.
- Carroll, John Wiley, 226 Field St., Cumberland, 589-4102
- Cassell, David F., 7413 Lorenzo Lane, Louisville, 239-9165
- Cecil, A. Morris, 14 Shaw Lane, Ft. Thomas, 441-8427, 381-1480
- Chattin, Ernest P., 615 17th St., Ashland, 324-2665, 324-6191
- Chinn, Mike, 725 Scherm Rd., Owensboro, 684-0637, 684-2332
- Chinn, Ralph, 3205 Hampton St., Ashland, 324-0683
- Cisco, Robert N., 403 Highland Ave., Vine Grove, 877-5548, Ft. Knox 4-4445
- Clark, Charles L., 2315 Brighton Drive, Louisville, 459-3540
- Clark, Owen B., 106 Kentucky Ave., Georgetown, 863-3719, Nicholasville, 885-4157, Lexington, 252-8717
- Clemmons, Sam, 635 Central Ave., Lexington, 255-3562, 255-5735
- Clusky, Joe, Box 296, Red Jacket, W. Va.
- Cochran, Roy H., Jr., 713 Caldwell, Corbin, 528-1697, London 864-4330
- Collins, C. E. "Jack", 35 Rosehill Dr., Clarksville, Tenn., 647-0154, 798-4411
- Collins, Jack, 8333 Jadwin Drive, Cincinnati, Ohio, 821-7791, 621-4950
- Cook, Richard N., 931 Maple Ave., Dayton, 291-6880, 243-3531
- Cox, Jerry H., Route No. 2, Rineyville, 765-7674, 4-7756
- Crace, James E., 892 Orchard Park Rd., Hurricane, W. Va.
- Craft, Albert B., 345 Glendale Ave., Lexington, 254-5365, 254-0764
- Craft, Bill, 140 Vanderbilt, Lexington, 277-4843, 277-3737
- Croder, Ray, 1120 Fanelm Rd., Louisville, 368-1196
- Crosthwaite, John S., Jr., 8139 Elbow Lane N., St. Petersburg, Fla., 344-7651, 898-2141
- Cullen, Charles E., 3010 Don Dee Drive, Louisville, 451-3322, 895-0525
- Cullum, Harold D., 3943 Rhodes Ave., New Boston, Ohio 456-5229, 456-4559
- Culp, Willard E., 318 Skyline Park Dr., Hopkinsville, 886-7967, 798-5861
- Curnutte, James R., 201 East Eighth Ave., Huntington, W. Va.
- Current, Ellis Ray, 1933 Bellefonte Drive, Lexington, 277-1049, 252-2200 ext. 2300
- Dallmann, James W., 12 Center St., Jeffersonville, Ind., 283-7255
- Damron, Walter Louis, Route 2, Martin, Tenn.
- Daniel, Ernest H., 2317 Bath Ave., Ashland, 324-2785, 324-1155 ext. 2521
- Davis, Clyde E., 2531 East Euclid Ave., Ashland, 324-2804, 325-7145
- Davis, Curt, 1119 E. Burnett, Louisville, ME 4-4959, JU 2-3511
- Davis, Ralph C., 1326 South 7th St., Ironton, Ohio, 532-8606, 532-8143
- Deaton, Daniel E., Matewan, W. Va.
- DeMuth, Paul E., 609 Yancy Ln., Louisville, 895-2522, WH 5-5237
- Dennedy, T. Robert, 5083 Orangelawn, Cincinnati, Ohio, 922-8352, 922-2300
- Dent, Donald L., 1746 Dixdale, Louisville, 776-3573, 366-4551
- Denton, Charles, 127 So. Hubbard Lane, Henderson, 826-4020, 826-9533
- Denton, William J., 303 Bakers Court, Louisville, 366-7876, 584-9271
- DeWitt, Maurice C., 527 Elm Tree Lane, Lexington, 252-0641, 252-0641
- Dial, Charles B., 3300 Monel Ave., Huntington, W. Va.
- Dial, Jack W., 3179 Sumner Ave., Huntington, W. Va.
- Dizney, Alan, 206 4th, Corbin
- Doll, Louis E., 12152 Chesterdale Rd., Cincinnati, Ohio, 771-3412, 761-4210
- Donald, Edward W., 4098 Farragut St., Fort Knox, 4-6872, 4-6950
- Dorsey, James, 4062 Vinedale Ave., Cincinnati, Ohio, 471-8050
- Dosek, Jerome J., 345-Navaho Trail, Huntington, W. Va., 525-1937, 525-2274
- Downey, Robert F., 327-26th St., Dunbar, W. Va.
- Downs, Joseph W., 829 Bartley, Bardstown, 348-5123
- Drake, Richard R., 72 Donnelly Dr., Ft. Thomas, 441-4235
- Draud, Jon E., 2441 Alexander Pk., Southgate, 441-0223
- Duff, Earl, 218 Lytle Blvd., Hazard, 436-2725, 436-3136
- Eads, James Robert, 2177 Cypress Drive, Lexington, 278-4363, 255-1320
- Eastham, Everett, Jr., Route No. 1, Box 226, Kenova, W. Va.
- Edwards, Ernest S., Jr., 8235 39th St., Louisville, 774-5496, 584-0201
- Edwards, Sonny, 508 Jefferson Ave., Milton, W. Va.
- Elliott, Carroll L., 307 College St., Elizabethtown, 765-4007, 765-6118
- Ellis, Johnny, Box 331, Prestonshurg, 6-2751, 6-3080
- Elovitz, Carl, 1920 Spring Grove, Lexington, 277-3994, 873-4901
- Engle, Orville, 128 Oak St., Pineville, 7-2916
- Fallon, Robert James, 142 Pear St., Hazard, 436-4528, 436-2151
- Fandrich, William, Murray
- Farina, Lawrence, 1680 Newbrook Dr. Cincinnati, Ohio, 522-5863, 243-3318
- Farish, Merlin J., 1754 Genung Drive, New Albany, Indiana, 945-0863, Brandenburg 422-2161
- Faust, Jack, 2427 Concord Drive, Louisville, 634-4204, 584-6236
- Fay, John C., 142 B Woodford Drive, Lexington, 255-6010, ext. 219 (Bus.)
- Fenimore, Clarke E., 3943 Kennison Ave., Louisville, 896-4716, BU 2-1301
- Fenton, Don J., 4890 Oaklawn Drive, Cincinnati, Ohio, 271-3792, 751-4344
- Ferguson, Jesse S., 1719 Model Road, Louisville, 774-2831, 778-2731 ext. 386
- Fields, Ronald M., 1039 Madison, Henderson, 826-9859, 826-8381
- Fish, Leland G., 826 Oak Hill, Lexington, 255-7156, 254-7080 ext. 7535
- Fletcher, John L., 5723-B Brown St., Ft. Knox, 4-2079, 4-2052
- Florence, Robert H., 308 N. 36th St., Paducah, 444-7489, 444-9691
- Flowers, James C., 3508 Canterbury Dr., Jeffersontown, 267-7261, 582-2281
- Forbes, J. W. "Jack", 4316 Dannywood Rd., Louisville, 454-6025, 778-2731
- Fortney, Robert L., 2817 Breckinridge Lane, Louisville, 458-1079, 582-3511 ext. 472
- Foster, Berryman E., 927 Waverly Drive, Lexington, 255-7783, 254-7080
- Foster, J. W., 176 Market St., Lexington, 254-3670, 255-6666 ext. 5253
- Fralely, Bill, 1604 Lee Drive, Henderson, VA 7-3232, VA 6-2601
- Frankel, Louis S., 3723 Stanton Blvd., Louisville, 454-6519, 454-6519
- Franklin, James A., 2913 Hackworth St., Ashland, 325-3934, 324-1111 ext. 5530
- Frazier, Tom, 1022 Main St., Sturgis, 333-4412, 333-4672
- Freese, Ollie, 5518 Mapleridge, Cincinnati, Ohio, 561-5398, 351-7010
- Fruit, William E., Box 504, Henderson, VA 7-3540
- Fryrear, William P., 3012 Nadina Drive, Louisville, 459-5042, 454-7511 ext. 4162
- Fucci, Dominic A., 752 Wellington, Lexington, 277-6327, 254-8030
- Fugate, E. Hugh, 329 Mockingbird Drive, Frankfort, 223-1340, 564-3990
- Fuller, Wilton Hope, 533 Hill-n-Dale Drive, Lexington, 277-6654, 266-0115
- Galok, Walter M., 3333 Central Ave., Ashland, 325-3305, 325-1751
- Garrett, Richard A., Lexington Theological Seminary, Lexington, 255-4765
- Gentry, Dale J., 4945 Determine Lane, Louisville, 447-5981, 585-5814
- Gettler, John F., 705 Providence Rd., Lexington, 266-4801, 252-5494
- Gilbert, Gerald L., Box 51, Elizabethtown, 765-6704, Ft. Knox 4-7719
- Gilbert, James D., 2248 Citation, Owensboro
- Gilbert, Wm. C., 702 Otter Creek Rd., Vine Grove
- Gilman, Ronald R., Route No. 1, Box 183, Debarton, W. Va.
- Golden, Billy Joe, 436 East Main St., Lynch, 848-2512
- Gorham, Harry C., 117 Hamilton Park, Lexington, 255-4257, 299-5214
- Gour, Bob, 218 South Lee St., Bowling Green, 843-9582, 745-4293
- Grace, Charles K., Cypress St., Pineville, 337-3331, 337-2348
- Grady, Clarence O., 420 North Main, Marion, 965-3131, 965-3131
- Graham, James E., 4505 Blackburn, Ashland, 324-8169, 324-1155 ext. 376
- Greene, Therman R., 5610-B Gilkey Loop, Ft. Knox, 4-7960, 4-6950
- Greenoe, Richard H., 14 Clere Ct., Henderson, 826-9743, 827-3556
- Grieco, Joe, 2703 Shaffer Ave., Cincinnati, Ohio, 661-3346
- Griffith, Lauren, 7408 Cross Creek Blvd., Louisville, 239-9707, 459-5970
- Griggs, John M., 3045 Dartmouth Drive, Lexington, 278-2422, 237-0143
- Guess, James E., 949 McClure Ave., Henderson, 826-2116, 521-6601
- Hadden, Newell P., Jr., 942 Wolf Run Rd., Lexington, 255-5332, 252-7866
- Hagan, Joe, 3000 Sherbrooke Rd., Louisville, 458-1325
- Hagerman, Bart, 1912 Ashland Ave., Ashland, 325-4227, 324-1111 ext. 5462
- Hagy, Harold J., 715 Grant St., Charleston, W. Va.
- Hall, Charles E., 425 Yale Dr., Lexington, 278-3995, 299-6212
- Hall, John R., 2610 Central Pkwy., Ashland, 325-7306, 324-1111
- Hall, Richard T., 2960 Rio Rita, Louisville, 458-6611, 585-5893
- Hamilton, Patrick J., 3316 Radiance Rd., Louisville, 451-9737, 587-1022
- Harding, Artell, 309 Fonville, Martin, Tenn., 587-3363
- Hanes, Edward C., 1508 Ridgecrest, Bowling Green, 843-3432
- Hammock, Don L., 1512 Audubon Parkway, Louisville, 635-7111, 583-5604
- Harris, Gene, 201 Riverside Drive, Russell, 836-8803
- Harris, David L., 505 North 4th St., Bardstown, 348-5733, 348-3311
- Harris, Jerry, Route No. 1, Cedar Hill, Tenn., 696-2211
- Harris, Russell, 368 Boiling Springs Drive, Lexington, 254-6525
- Hatfield, Gene Edwin, 103 Henderson Dr. South, Fulton, 472-2825, Paducah 443-4500
- Hawkings, W. H. A., 407 Grace, Springfield, Tenn., 384-8978, 384-5583
- Hedge, David Wm., 321 Mockingbird Dr., Jeffersonville, Indiana, 283-3962, 283-3155



- Heinold, F. Thomas, 6702 Plantation, Cincinnati, Ohio, 522-7834  
 Heinze, Frank, 204 Maple Ave., Prestonsburg, 886-2436, 377-2481  
 Heinze, John G., 39 Highland Ave., Prestonsburg, 886-2195, 874-2110  
 Hellard, George D., Jr., 572 Longview Dr., Lexington, 277-2543, 254-0784  
 Henichen, Carl, 1941 Schollenberger Ave., Cincinnati, Ohio, 931-7997  
 Helvey, O. J., 515 Elm St., Williamsburg, 6932, 6669  
 Hendon, L. J., 228 South 15th St., Murray, 753-3658  
 Hershberger, Richard W., 1203 Lynn Myra Ct., Louisville, 367-6820, 367-6820  
 Hicks, Lloyd, 6253 Springmeyer Rd., Cincinnati, Ohio, 662-5103, 961-7820, ext. 216  
 Hildebrandt, Glen M., 368 Bays Ave., Morehead  
 Hill, Earl F., Box 141, Loudon, 864-2521, 864-2128  
 Hofstetter, Joe, Box 1815, Williamson, W. Va.  
 Holbrook, William H., No. 1 Roland Park Drive, Huntington, W. Va.  
 Holbrook, William M., 2421 Forest Ave., Ashland, 324-5850, 324-2144  
 Holland, David W., Box 43, Water Valley, 355-2640, 472-3626  
 Hollingsworth, Ralph D., 206 8th Ave., East, Springfield, Tenn., 384-5467, 384-5700  
 Holman, Joseph B., 2101 St. Teresa Dr., Lexington, 266-7046, 282-8328  
 Holman, S. T., 207 2nd Street, Corbin, 528-5197, 528-3213  
 Huber, Carl W., 125 North 37th St., Louisville, 774-3387  
 Huber, Jerry, 404 Scott St., Covington, 681-0897, 431-5723  
 Hughes, Paul P., 520 Riverside Drive, Prestonsburg, 886-6771, 886-2170  
 Hurley, Kenneth E., Valentine Drive, Maysville, 564-5364, 564-6216  
 Huston, Roderick J., 7492-C Pressler, Ft. Knox, 4-4487, 4-2942  
 Hynson, Fred R., III, 2056 St. Christopher, Lexington, 266-4285, 254-9895  
 Idol, Lloyd, Jr., 116 Leafwood, Middlesboro, 248-5761  
 Idol, Billy Joe, 124 Leafwood Rd., Middlesboro, 248-2837  
 Ingram, William R., 5466H, Lowe, Ft. Knox, 4-3077, 4-7455  
 Ishmael, Stephen A., 2003 South 2nd St., Louisville, 637-3822  
 Jacoby, Ben W., 127 Showalter Drive, Georgetown, 863-0508, 252-8328  
 James, Gene, 1507 South 3rd St., Ironton, Ohio, 532-6976, 532-6224  
 Jarrell, Frank W., Box 46, Ceredo, W. Va.  
 Jenkins, Beryl, 2326 South 11th St., Ironton, Ohio, 532-5215  
 Jenkins, Kean, Box 32, Elizabethtown, 765-4887, 765-4606  
 Johns, Joseph O., U. S. No. 35, Buffalo, W. Va.  
 Johnson, Gordon M., 1011 Garred St., Pikeville, GE 7-4758, GE 7-6126  
 Johnson, Harry A., Jr., 348 Friedman Ave., Paducah, 443-1767, 444-6311 ext. 402  
 Johnson, Robert L., 6 Jamestown Place, Clarksville, Tenn., 647-3982, 798-5493  
 Johnson, Stau W., 2115 Ottawa Drive, Owensboro, 684-2157, 683-2401 ext. 236  
 Jones, J. Carl, 1904 Goodwin, Corbin, 528-2349, 528-2450  
 Jones, John H., Route No. 5, Scottsville, 237-3959, 586-5141  
 Jones, Paul, 314 Park Lane, Elizabethtown, 765-4502, Ft. Knox 7019  
 Jones, William A., 252 North 38th St., Paducah, 443-7464, 444-9691  
 Josephs, Michael, 2838 Washington Blvd., Huntington, W. Va.  
 Julian, James K., 119 Catherine Drive, Hurricane, W. Va.  
 Junker, Edwin G., 1045 W. Seymour, Cincinnati, Ohio, 821-4117  
 Kallaher, Jim, 833 Hosier Drive, New Castle, Indiana, 529-3189, 529-4799 ext. 34  
 Karr, Don, 1503 Woodwind Ct., Corbin, 528-6466, 528-6466  
 Kasperski, Harry W., 2652-B Fincastle Rd., Louisville, 451-1065, 582-5215  
 Kathman, Bernie, 3060 Elmwood Drive, South Ft. Mitchell, 341-7369, 621-7541  
 Kaufman, Alvin R., 8215 St. Anthony Church Rd., Louisville, 366-0126, 587-0871  
 Kauffman, Victor C., 3635 W. 8th Street, Cincinnati, Ohio, 921-9230, 921-3744  
 Kelly, William G., 421-A "A" Street, Fort Knox, 4-7887, 4-1957  
 Kemper, Russ, 5732 Lauderdale, Cincinnati, Ohio, 931-6222, 621-4380  
 Kerr, Kenneth, 10806 Grafton Hall, Valley Station, 937-3008, 585-4000  
 Kimble, Frank, Box 2173, Williamson, W. Va.  
 King, Allen V., 216 N. Main, Henderson, 826-9647, 826-3321  
 Kirk, Floyd Charles, Main St., Box 334, Benham, 848-2039  
 Kraesig, Charles F., Marengo, Ind., 633-4842, 633-4273  
 Kraft, H. Nellis, 2606 Delor Ave., Louisville, 637-8195  
 Kratzenberg, Ralph, 2412 South 10th St., Ironton, Ohio, JE 2-5741, JE 2-5741  
 Lally, James J., 1210 Ross, Cincinnati, Ohio, 471-3644  
 Lambert, Irvin, 5110 Rural Way, Louisville, 969-4718, GL 8-1948  
 Landers, John F., 32 Charlemagne, Clarksville, Tenn., 647-2656, 647-6322  
 Lange, William E., Jr., 323 Cecil Ave., Louisville, 774-2974, 368-2581  
 Lawson, Leland, 949 Deporres, Lexington, 254-1009  
 Leahy, Pat, 1819 Ratchiffe, Louisville, 776-6368, 587-1121 ext. 472  
 Ledbetter, Paul M., 5760-A Allison, Ft. Knox, 4-6765, 4-6544  
 Lehkamp, Kenneth H., 184 Valley View, Southgate, 441-1475, 694-6858  
 Lenahan, Thomas F., 4309 Retreat Rd., Louisville, 964-4636, 582-8696  
 Leonard, Dale C., 2308 Hikes Lane, Louisville, 451-2308, 634-1581 ext. 457  
 Liber, James, 7826 Pine Meadow, Cincinnati, Ohio, 931-9577, 241-6275  
 Lindon, Bobby Glenn, 2208 Jasmine, Lexington, 278-2439, Frankfort 564-3070  
 Lingo, Henry E., 424 West Main, Vine Grove, 877-2346, 877-5537  
 Locke, William F., P. O. Box 232, Bardstown, 348-5403  
 Logan, Eli, 421 Poplar, Hazard, 436-2610, 436-2151  
 Long, James E., P. O. Box 73, Baskett, VA 7-5000, JE 3-6421  
 Lopp, Wilbur, Jr., 1906 Hoke Rd., Louisville, AN 7-5010, 584-2155  
 Lotz, Robert W., 106 Buttercup Rd., Louisville, 239-3976, 634-9491  
 Lowe, Gene, Box 28, Route No. 6, London, 864-5724, 864-2207  
 Lowe, Stan, Box 337, Russellville, 726-6647, Nashville, Tenn., CY 7-6521  
 Lurker, Mel, 1651 Olive, Evansville, Ind., 425-3929, 423-5876  
 Lusby, George, 615 Pueblo Trail, Georgetown, 863-1440, 863-1770  
 McCarthy, William J., Dogwood Lane, Fulton, 472-2823, 479-2663  
 McConachie, Bud, 5608 Halstead Ave., Louisville, 969-9676  
 McCormick, Donald R., Route No. 2, Vicki Way, Frankfort, 223-5897, 564-4750  
 McCowan, Connell, Route No. 1 Box 251, Corbin, 528-4932  
 McDougal, Alf, 406 North High St., Franklin, JU 6-4451 (Bus.)  
 McFadden, Jimmie, 649 Northside Drive, Lexington, 299-1635, 277-3977  
 McGehee, Gordon, 733 Forest Lane, Covington, 261-6880  
 McGlasson, Eugene M., 1800 Brentmoor Ln., Route 5, Anchorage, 425-4654  
 McGuire, Jack, 6421 Six Mile Lane, Louisville, 459-4031, 245-4161  
 McKenzie, Robert L., 1809 Chestnut St., Kenova, W. Va.  
 McKinney, Adelle F., 7829-B Estrada Ave., Ft. Knox, 4-5860, 4-4558  
 McLane, Albert, Route No. 1, Glendale, 862-4579, 862-3924  
 McMillen, James N., 305 Riverside Drive, Russell, 836-8054, 324-6191  
 McNabb, Edgar, 16 Beechwood, So. Ft. Mitchell  
 McNamee, Jack, 3616 Muddy Creek, Cincinnati, Ohio, 922-5207  
 McPeck, Talmadge, 4800 Williams, Ashland, 324-9775, 324-1191 ext. 37  
 McSheffrey, J. E., 9057 H Young St., Fort Knox, 4-4396, 4-6932  
 Madon, Robert L., 314 Catalpa, Pineville, 337-2135, 337-3093  
 Magruder, Earl, 4100 Pixley Way, Louisville, 968-7045  
 Malone, James F., 200 Padgett, Corbin, 528-2424, 528-9019  
 Mareum, Bruce, 1656½ Sixth Ave., Huntington, W. Va.  
 Matthews, Billy D., 506 Boren, Springfield, Tenn., 384-5550, 384-3561  
 Mattingly, Charles, 3813 Poplar Level, Louisville, 459-5793  
 May, Charles E., Box 185, Prestonsburg, 886-3414, 886-8661  
 May, E. B., Jr., Box 185, Prestonsburg, 886-3414, 886-8661  
 Mayhew, William M., Pawnee Drive, Elizabethtown, 765-2706, Ft. Knox 4-7247  
 Maynard, Dr. Joe E., 809 Nesbitt Drive, Madison, Tennessee, 865-2438  
 Mays, Raymond K., 104 Samuel Ave., Barbourville, W. Va.  
 Meeks, Jack, Tanglewood Drive, Corbin, 528-5404, 528-1836  
 Melmige, James, Jr., Box 2117, Williamson, W. Va.  
 Mercke, Frank R., 417 Lotis Way, Louisville, 896-8460, 634-9491  
 Mercker, George E., 803 Republic Bldg., Louisville, 451-8399, 582-1645  
 Metcalf, Ken, Cub Run, 524-2524, 524-2794  
 Metzger, Donald R., 9312 Cloverwood Lane, Fern Creek, 239-9813, 454-7511 ext. 4624  
 Meyer, Bud, 5319 Lilibet & Court, Cincinnati, Ohio, 922-3459, 381-4300  
 Mickey, Elbert W., Box 2471, Williamson, W. Va.  
 Miller, Everett J., 4108 Riverview, Middletown, Ohio, 423-9978, 425-3276  
 Miller, Maurice Tony, 417 Elm St., South Charleston, W. Va.  
 Millerhaus, Bill, 530 Woodlawn, Cincinnati, Ohio, 471-8467, 921-9722  
 Minta, John H., 326 W. Carter, Clarksville, Ind., BU 3-8553, 582-3571 ext. 386  
 Mitchell, Vyrion W., Dogwood Lane, Fulton  
 Modrell, Garry W., 162 Woodland, Lexington, 233-1682, 252-2200 ext. 2701  
 Moody, William R., 2032 Oleander Drive, Lexington, 277-9622, 252-0420  
 Mooneyhan, James H., 810 Henry St., Franklin, 586-4989, 586-4451  
 Moore, James Patrick, Jr., 1734 Gettysburg Rd., Lexington, 278-3960, 252-2250 ext. 3496  
 Moore, Jerry W., 318-22nd St., S. E., Charleston, W. Va.  
 Mordica, William S., 800 Edgewood Ave., Ashland, 324-7741  
 Morris, Gene L., 302 Wilson Court, Huntington, W. Va.  
 Morgan, Jimmie Lee, 1934 Virginia Avenue West, Huntington, W. Va.  
 Morgan, Richard, Route No. 6, Box 64, London, 864-6511, 864-5114

- Morrissey, Rockne, 4824 Harlou Drive, Dayton, Ohio, 254-4395, 271-0343
- Morse, Richard K., 163 N. Deepwood Dr., Radcliff, 351-3748, Ft. Knox 4-4454
- Moss, Howard A., P. O. Box 1042, Paducah, 898-3168, 442-4474
- Moser, Tom, Box 191, Stanford, 365-2596, 277-7141
- Mueller, Dick, 2059 Oleander, Lexington, 277-5924, 254-1360
- Mullins, B. E., Box A, Paintsville, 789-4610, 789-3580
- Mullins, Robert M., 120 Colonial Drive, Louisville, 895-5882
- Muntan, Peter J., 125 Woodmore Ave., Louisville, 368-8236, 637-7621 ext. 288
- Murray, Thomas, 25 Ashton Rd., So. Ft. Mitchell, 331-1891, 421-5043
- Napier, Wallace R., Jr., Mary Alice, 573-3721
- Nassida, Frank R., 108 Buckwood Drive, Richmond, 623-9209, 623-9858
- Neal, Gene, 3648 SR 132, Route No. 1, Batavia, Ohio, 753-5908, 242-5151
- Nevil, Vernon E., 7748-C, 70th Tk Bn Road, Ft. Knox, 4-5604, 4-8530
- Nickell, Duane "Red", 2009 Broad, Paducah, 444-6095, Jopta 543-7434
- Niday, Paul D., 4094 Fifth St. Rd., Huntington, W. Va.
- Noland, Douglas, 305 Herndon, Stanford, 365-2609, 365-2619
- Nord, Bertrand J., 4205 Naomi Drive, Louisville, 969-3369, 587-7571
- Nord, Ed, 7005 Green Manor Drive, Louisville, 239-9150, 895-3401 ext. 202
- Nord, Gilbert, 6315 Krause Ave., Louisville, 447-3133, 587-7571
- Norwood, Thomas R., 811 Henry St., Franklin, 586-3614, 586-3541
- Odil, Wm. Randall, Route 6, Bowling Green, 843-3633, 842-9471
- Oldham, Ben Richard, 516 Estill Court, Georgetown, 863-1208
- Omdahl, John LeRoy, 1556 Alexandria Dr. No. 2A, Lexington, 278-2646, 255-6860 ext. 2207
- Omer, Billy W., 250 Reed, Madisonville, 821-2833
- Omer, Harold G., 150 N. Crestmoor, Louisville, 896-4170, 774-6386
- Orem, Dale Linton, 409 Chippewa Drive, Jeffersonville, Ind., BU 3-8225, Louisville 587-1161 ext. 441
- Osborne, Ted G., Box 806, Lexington, 266-6152, 266-6152
- Osmer, Thomas Mitchell, 5442-F Brett Drive, Ft. Knox, 4-6677, 4-6811
- O'Nan, Norman, Route 4, Henderson, 7-3968, 6-9578
- O'Neal, Bud, 3628 Kelly Way, Louisville, 458-7940
- Osting, James Edward, 502 Meadowbrook, Louisville, EM 8-9631, 584-3211, ext. 368
- Owens, Charles C., Jr., 2656 Chesterfield Ave., Huntington, W. Va.
- Owens, R. L., Jr., 602 18th St., Corbin, 528-4426, 528-2330
- Pace, Donald, 2023 Deauville, Lexington, 252-6535, 255-0398
- Parker, Bob L., 8602 Honer Ave., Louisville, 969-9090, 587-1121 ext. 225
- Parker, Francis V., 208 Rosemont, Providence, 667-2224
- Parsley, Clyde E., Route No. 2, Providence, 667-2524, 821-9004
- Pate, Lloyd W., 608 Ronnie Road, Madison, 895-3522, 895-5472
- Paulk, John R., 1711 College Farm Road, Murray, 753-3078, 924-5602
- Peecher, W. Lloyd, 5928 Woodland, Sciotoville, Ohio, 776-9075
- Peeno, Harry R., 124 Morris Road, Lookout Heights, Covington, ED 1-1981
- Pegausch, William E., 618 Brookhaven, Mayfield, 247-5932, 247-2267
- Pelham, Pete, 214 Oak St., Dyersburg, Tenn., 285-6649, 285-2323
- Perry, Tom, Route No. 2, Box 494, Mt. Sterling, 498-3827, 498-3800
- Phipps, James M., 1333 South 3rd St., Louisville, 635-6559, BU 3-3551
- Pietrowski, Paul, 108 Bishop St., Corbin, 528-6391
- Plate, Arthur C., 6505 Crestview, Cincinnati, Ohio, 631-6161, 241-4114
- Porco, Kenneth J., 3924 Layside Drive, Louisville, 459-3455, 458-3281
- Porter, Charles E., 4306 Hawthorne Drive, Owensboro, 684-4455, 4-6211
- Powell, Logan G., 107 N. Broadway Park, Lexington, 252-9615, 278-5421 ext. 224
- Prather, Wilbur E., 1512 Berry Blvd., Louisville, 363-2908, 585-2169
- Prichard, Larry G., West Hamlin, W. Va.
- Rague, Ronald, 5300 Ronwood, Louisville, 964-2350, 637-9171
- Ransbottom, Jack, 2126 Charles, Portsmouth, Ohio, EL 3-0446, EL 3-4101
- Rapp, Lowell D., 1416 S. 4th, Ironton, Ohio, 532-9575
- Rapp, William C., 1836 Woodland Dr., Ironton, Ohio, 532-1983, 532-7245
- Rawls, L. Townes, 1832 Darien Drive, Lexington, 278-4966, 254-6498
- Ray, Bob, 407 Leyton Ave., Louisville, 895-3654, 895-3654
- Ray, Collis Randle, 671 Jameswood Dr., Paducah, 442-2146
- Ray, Shirley G., 4902 Sturbridge Place, Owensboro, 684-8963, 684-0104
- Reddington, Jim, 3824 Glenside Place, Louisville, 452-9689
- Reece, Fred, 149 Elm St., Versailles
- Reece, Jerry T., 396 Linden Walk, Lexington, 254-7876, 255-6666, ext. No. 6 Station
- Reed, Gordon, 22 Riverside Parkway, Ft. Thomas, 441-4946, Cincinnati, Ohio 631-5750
- Reed John R., Knapp Ave., Morehead, 473-5549
- Reed, Nick, 6320 Hunters Grove Rd., Louisville, 447-8148, 584-0181
- Renfro, John, Box 298, Williamsburg, 6488, 6808
- Richardson, Dennis C., Jr., 1122 Savannah Dr., New Albany, Indiana, WA 5-9457
- Rieman, Robert S., 2004 Dallas Ave., Cincinnati, Ohio, 522-3694, 522-3694
- Riggs, C. Dennis, 7152 Southside Dr., Louisville, 368-2383, 636-3571
- Riggins, Jason M., Box 417, Mann, W. Va.
- Riggs, William Tom, 103 W. McElroy, Morganfield, 389-2210, 389-2210
- Ring, Bill, 481 Rookwood Parkway, Lexington, 299-7089, 254-1776
- Robinson, Don L., 2012 Poplar St., Kenova, W. Va.
- Robinson, J. Ward, II, 3802 Nanz Ave. No. 7, Louisville, 895-0631, 895-0631
- Rodgers, Tom H., 721 Park Court, Madisonville, 821-7312, 338-3800
- Rogers, J. B., 832 12th Ave., Huntington, W. Va.
- Roiph, Harold J., 915 South 7th St., Ironton, Ohio, 532-4036, 532-3231
- Roof, Jerry C., 447 University, Louisville, 986-9057, 896-9057
- Rudolph, Fred, Jr., 5600 Jeanine Drive, Louisville, 969-3013, 635-7441
- Russell, Gary E., 2112 Gregory Drive, Henderson, 827-1491
- Russell, Joe, Box 213, Russellville, 726-6983, 726-6983
- Russman, Godfrey F., 1041 Goss Ave., Louisville, 635-7426 (Bus.)
- Sacra, Gresham, 605 Anniston Dr., Lexington, 299-8170, 299-1221, ext. 2244
- Sagers, Robert M., 494 Morrue Dr., Cincinnati, Ohio, 921-0724, 251-4510
- Sallee, Alan Lee, 3236 North Talbot Road, Erlanger, 341-3556, PL 1-2808
- Sanders, Mel, 3910 Sunset, Paducah, 442-3650
- Sapp, Edward, 2806 Dell Brooke, Louisville, 458-8989, 454-7511 ext. 4779
- Sawyer, Thomas G., Route No. 1, Shawnee Estates, Winfield, W. Va.
- Schad, Jim, 10717 Chelmsford Road, Forest Park, Ohio, 825-3343, 931-1260
- Schiering, Jack H., 6948 Terrylynn Lane, Cincinnati, Ohio, 681-2272
- Schlich, Paul, 3315 Dean Drive, Louisville, 458-6765, 896-0211
- Schlosser, J. Paul, 1971 N. Lynndale Ave., Cincinnati, Ohio, 521-6162, 521-6162
- Schmitt, K. F., 710 E. Walnut, Louisville, 772-0131, 584-8269
- Schmitt, Paul E., 3864 Darlene Drive, Louisville, 778-5355, 635-5251
- Schreckler, Dennis R., 4312 Lowe Rd., Louisville, 451-1435, 451-1435
- Schuble, Charles E., 2352 Ashwood, Louisville, 459-1774, 636-1431
- Schwetschenau, Paul, 7013 Clovernoll Dr., Cincinnati, Ohio, 931-3548, 243-3882
- Scoone, John, 162 East Main, Lynch, 848-2250
- Scott, W. L., 1816 McDonald, Lexington, 278-2844, 254-1818
- Seale, Frank E., 1001 Tates Creek Rd., Lexington, 266-8545
- Seavers, Joseph E., 2517 Ann St., Ludlow, 341-0213, 291-8925
- Shanks, Thomas E., 3113 Vogue Ave., Louisville, 454-4203, 458-5502
- Shaw, Earl, 121 Hagan Court, Lancaster, 792-2370, 548-2208
- Shaw, John H., 219 East Lee, Mayfield 247-1907
- Shewmaker, Wayne, 206 W. Meadow Dr., Clarksville, Tenn., 647-7351, 647-1720
- Simms, Clarence E., 610 Linden Ave., Newport, 261-0735
- Shirley, Michael D., Jr., 9818 Caven Ave., Louisville, 969-8801
- Showalter, John, Georgetown, 863-1892
- Sligh, James E., 607 Sherwood Rd., Cynthiana, 234-4345, 724-2301
- Sloan, Wallace, 419 Oread Rd., Louisville, 895-1126, 583-0621
- Sloane, Earl Dean, Route No. 1, Box 10D, Corbin, 528-4197, 528-9038
- Smith, Robert Eugene, 3613 Kings Highway, Louisville, 451-6244
- Snyder, Gus, 2420 Adams, Ashland, 324-7927, 324-1111 ext. 5558
- South, Stanley P., 116 Long Ave., Winchester, 744-5753, 744-4812 ext. 47
- Spath, William J., 4019 Rosemont Ave., Louisville, 452-9637, 584-5209
- Speck, Michael E., 205 Sunset Road, Elizabethtown, 765-6385, 862-1924
- Speaks, Carl V., 118 Main, Stanford, 365-2109, 365-2109
- Staten, Joseph B., 4303 Wyola Court, Louisville, 458-7454
- Staples, Jerry, 1755 N. Green, Henderson, 826-4882, 826-9085
- Stephens, Herbert D., 133 First St., West, Ceredo, W. Va.
- Stephenson, Harry S., 1612 Hawthorn, Lexington, 299-1757, 255-2960, ext. 284
- Stevens, William D., 1033 Clairborne Way, Lexington, 266-2578, 299-1221 ext. 2223
- Strain, Richard P., Box 472, Radcliff, 351-4306, Ft. Knox 4-6757
- Strong, Arnett, 116 Kentucky Blvd., Hazard, 436-3938, 436-2141
- Sullivan, A. G., 1921 Goodwin Ave., Corbin, 528-1282, 528-9035
- Sullivan, Don Chris, 2083 Old Nassau Rd., Lexington, 277-6953, Frankfort, 564-4806
- Sucietto, Dick, 6572 Gaines Rd. Cincinnati, Ohio, 521-7495, 821-4280 ext. 379



# SOUTHLAND SPORT SHOP

348 Southland Dr.

Lexington, Ky.

In Stock For Immediate Delivery by U.P.S.

J. A. McFadden, School Rep.  
649 Northside Dr.  
Lexington, Ky.  
Phone 299-1635

All Star Cotton Socks—Sized 10, 11, 12, 13 .....	\$ 4.50 doz.
Riddell White Helmets—(We install bars) .....	\$ 18.95
Riddell Football & Coaches Shoes and Shoulder Pads, RSS & Jet Basketballs, Converse Shoes—Call us for quantity prices	
Football Practice Pants .....	\$ 4.95
Trophies in stock at all prices—We engrave at our store	
Sweat Shirts—We print our own at store, 3-4 week service, 36 minimum .....	\$ 1.95 ea.
Coat Style Sweaters .....	\$ 12.95 & \$ 13.95
V-Neck White Sweaters .....	\$ 8.25 & up
6" Chenille Letters—(Plain) 2 weeks .....	\$ 1.35 ea.
J & J Speed Pack Tape .....	\$ 17.95
Cramer Trainers Supplies .....	
Mouthpieces .....	.95

# SOUTHLAND SPORT SHOP

Gene Stokley

277-3977

Dick Wallace

Swarts, Joseph C., 135 Lane, Ironton, Ohio, 532-9349  
Swinford, John, 202 S. Elmarch, Cynthiana, 234-2562, 234-5820  
Tackett, Jay, Stamping Ground, 535-6653  
Talbot, William G., III, Route No. 1, Paris, 987-2452, 987-2961  
Taylor, Dennis H., 1406 Hughes, Murray, 753-4825, 753-5022  
Taylor, Ronald L., HQ Special Troops, USAARMC, Fort Knox,  
765-5685, 4-2525

Tehan, James, 140 15th St., Newport, 291-1309, 261-0046  
Thomas, Bill, 3418 Barrell Dr., Louisville, 447-7521  
Thomas, Charles, 410 E. Drive, Fulton, 472-3652, 472-1637  
Thomas, Frank M., 629½ South 44th St., Louisville, 774-2624,  
778-9157

Thomas, Raymond E., 1106 Main St., Sturgis, 333-2151, VA  
7-9891

Thompson, Jack, 2347 Saratoga Drive, Louisville, 452-9255,  
454-4585

Thompson, Jack F., Jr., 1310 Rammers Ave., Louisville, ME  
4-3517, JU 4-5311

Thompson, Thomas Droege, 519 Erlanger Rd., Erlanger, 341-  
1809, 331-1551

Timmering, George E., 228 Roney Drive, Hopkinsville, 886-  
2198, 886-1922

Thrasher, Phillip, 1105 Westwood, New Albany, Ind., WH 4-  
3434, WH 4-2216

Trautwein, Jim, 4313 Martha, Louisville, 458-7438, 454-3449

Treas, Joe W., 609 Green St., Fulton, 472-1604, 472-1836

Trimer, Norman E., 1929 Taffeta Drive, Valley Station, 937-  
6672, Ft. Knox 4-8514

Troutman, Bill, Box 265, Kenvir, 837-2632

Trunzo, N. P., 1015 Elaine Dr., Louisville, 969-0559, GL 4-  
7511 ext. 4451

Turley, Bernard L., 5503 Ampere Drive, Charleston, W. Va.  
Tussey, George, Jr., Route No. 2, Box 100B, Catlettsburg, 739-  
4617

Usery, L. L., Greenfield, Tenn., 235-3141

VanHoose, Jack D., 106 Short, Paintsville, 789-5253, 789-3581

Vankirk, Alvia S., 107 South Poplar, Corbin, 528-2338, 528-3131

VanMeter, David G., 3148 Talisman Rd., Louisville 454-4030

Van Zant, Jim, Box 602, Williamson, W. Va.

Varner, Gene, 612 East Pike, Cynthiana, 234-2030, 234-1631

## 1966-67 Insurance Subsidy

As reported in the Board of Control meeting minutes which appeared in the May issue of the ATHLETE, the Board voted in its April meeting that the insurance subsidy of each Kentucky member school in 1966-67 shall be the basic amount of \$40.00, with an additional subsidy of \$60.00 for schools maintaining football. Principals of all K.H.S.A.A. member schools have been mailed reimbursement forms. Some of the companies with which Kentucky schools place their insurance business give the schools credit for the amounts due and bill the Association for these amounts. The reimbursement plan and the credit plan are both satisfactory.

## For Converse Shoes and All Football and Basketball Equipment

— TRADE WITH —

## the Midland Trail Sport Shop

13 SOUTH BANK STREET

MT. STERLING, KENTUCKY

(Continued in October issue)

AS WE BEGIN OUR FOURTEENTH YEAR OF PROVIDING STUDENT AND ATHLETIC INSURANCE COVERAGE AND SERVICE TO KENTUCKY SCHOOLS, WE WANT TO EXPRESS OUR THANKS TO YOU, OUR VALUED CUSTOMERS, AND WISH YOU A SUCCESSFUL SCHOOL YEAR. WE APPRECIATE YOUR CONFIDENCE AND THE FINE JOB YOU ARE DOING FOR THE CHILDREN OF OUR STATE. KEEP UP THE GOOD WORK!

---

---

*The Kingden Company* GENERAL AGENT

W. E. KINGSLEY

J. E. McCREARY, Mgr.  
Life Department

CHARLES C. PRICE

121-123 LAFAYETTE AVENUE  
P. O. BOX 7100

LEXINGTON, KY.

PHONE 255-0337



# Title I

We at Hunt's are prepared to help you lay out a program of equipment and apparatus that will meet your needs for your Title I physical education programs.

We are distributors for the very best manufacturers of physical education equipment and can make very prompt delivery in all areas.

We feature and can supply merchandise from the following manufacturers:

Rubber physical education balls by VOIT  
Gymnasium apparatus by GYM MASTER  
Gym mats and apparatus by AALCO  
Indoor play equipment by COSOM  
Outdoor play equipment by STANDARD and GENERAL  
Storage equipment by LYON METAL  
Athletic equipment by BRUNSWICK  
Athletic equipment by SPALDING  
Bats by HILLERICH & BRADSBY  
First Aid supplies by BIKE, CRAMER, and JOHNSON & JOHNSON

Our 50 years of experience in athletic goods business are at your service to help lay out a program, show you samples, or work with you in any way that may be of help to you.

We carry in stock a complete inventory of many, many items that will be of value to a complete education program.

If you would like to see our salesmen for Title I or any athletic activity, call us collect in Mayfield at 247-1941.

**HUNT'S ATHLETIC GOODS, Inc.**

CH 7-1941 — PHONES — CH 7-1942

MAYFIELD, KENTUCKY

WE SHIP THE DAY YOU BUY