

9-1-1967

The Kentucky High School Athlete, September 1967

Kentucky High School Athletic Association

Follow this and additional works at: <http://encompass.eku.edu/athlete>

Recommended Citation

Kentucky High School Athletic Association, "The Kentucky High School Athlete, September 1967" (1967). *The Athlete*. Book 132.
<http://encompass.eku.edu/athlete/132>

This Article is brought to you for free and open access by the Kentucky High School Athletic Association at Encompass. It has been accepted for inclusion in The Athlete by an authorized administrator of Encompass. For more information, please contact Linda.Sizemore@eku.edu.

THE KENTUCKY



High School Athlete

K.H.S.A.A. SCHOOL FOR FOOTBALL OFFICIALS



Above are area representatives who attended the School for Football Officials, held in Lexington on August 4-5. They are: (Left to Right) Front Row—Gordon Reed, Fort Thomas; George Mercker, Louisville; Bill Mordica, Ashland; School Director Edgar McNabb, Fort Mitchell; Ray Canady, Barbourville; Howard Moss, Paducah. Second Row—Clyde Parsley, Providence; E. B. May, Jr., Prestonsburg; Bob Fallon, Hazard; Vic Brizendine, Louisville; Paul Walker, Bowling Green; Bernard Johnson, Lexington; Kean Jenkins, Elizabethtown.

Official Organ of the
KENTUCKY HIGH SCHOOL ATHLETIC ASSOCIATION

September, 1967

Warning Against "Spearing"

Chicago . . . A group of coaches, physicians, and sports officials have joined the American Medical Association in calling for an end to football "spearing." Spearing is the tactic in which a blocker or tackler uses his head as a battering ram. It's dangerous, both for himself and for the person he hits.

The football authorities called for coaches to emphasize correct, head-up blocking and tackling, and for strict enforcement by officials of the rules against spearing. When polled by the American Medical Association's Committee on the Medical Aspects of Sports, the group was unanimous in warning against spearing. The AMA committee asked for their comments when recent studies showed that head and neck injuries continue to constitute a very high percentage of serious injuries in football.

Said Notre Dame football coach Ara Parseghian: "I can't begin to tell of the number of clinics where I have lectured on the (spearing) problem. We don't teach this at Notre Dame; and over the years, I have done everything within my power to influence others to coach against it."

A tackler can inflict a tremendous amount of punishment by driving his helmet into an opposing ball carrier. Moreover he endangers himself, because his head and neck take the force of the blow. Serious injury and even death have resulted from damage to brain areas or the spinal cord.

In the correct, head-up tackle, the player uses his shoulders, arms, and chest to stop the ball carrier. In a "spear" or "butt tackle," he drives into his opponent with his head. By spearing, the tackler may prevent the ball carrier from advancing a few extra inches—if he tackles him. With his head down, however, he not only risks serious injury, but is more likely to miss the tackle because he has a harder time seeing where he's going.

"Many neurosurgeons are appalled by coaches permitting or even deliberately teaching the devastating techniques of 'spearing,' 'stick-blocking,' and 'head-butting,'" said Richard C. Schneider, M.D., an Ann Arbor, Mich., neurosurgeon and member of the AMA Committee on the Medical Aspects of Sports. He pointed out that death may be only 30 to 60 seconds away if the blood vessels draining the brain are damaged by a heavy blow, or if hemorrhaging begins within the brain.

In the neck, the spinal cord is approximately the size of a man's ring finger. It lies within the bony spinal canal, an easy victim of bruising or cutting if neck vertebrae or cervical discs are forced out of place, Dr. Schneider said. Such an injury may result in death or permanent paralysis of arms and legs and loss of bladder and bowel control. Thirty such cases were reported during the football seasons of 1959 through 1964, he said.

Studies of fatalities indicate that football has a good safety record, considering that virtually a million players are involved each fall. It could be even better, however, if head and neck injuries could be reduced. In 1966, head and neck injuries were responsible for 23 of the 24 fatalities directly attributed to injuries in college and high school football.

"Strict enforcement by officials of the rule against 'spearing' is important," said Donald B. Slocum, M.D., chairman of the AMA committee and orthopedic consultant to the University of Oregon football team. "While every infraction may not be discernible, those that are should be rigorously penalized—particularly those that occur on second impact when a runner already has been tackled," Dr. Slocum said.

Although rules committees on all levels have voted for stricter enforcement of the "spearing rule," many

FILMS

The films listed below are in the Film Library of the University of Kentucky College of Education. The code letters, "e, j, s, c, a," refer to elementary, junior high, senior high, college and adult audiences who may enjoy the particular film listed. The rental prices shown do not apply to schools which use one of the special subscription service plans, offered by the Bureau of Audio-Visual Material.

Football

BALL HANDLING IN FOOTBALL, j-s-c-a, 1 reel, \$1.50.

Fundamentals of ball handling are stressed; stance, grip, "feel" of the ball, fingertip control adjustment before throwing or kicking, receiving passes from center or from a back, catching passes and punts, ways of carrying ball, and changing from one hand to another. Game shots are presented, using slow motion and stop action techniques, and superimposed animation to illustrate principles.

BLOCKING IN FOOTBALL, j-s-c-a, 1 reel, \$1.50.

Fundamentals of good blocking are taught in this film; position, speed, drive, follow-through, timing, and body control. Describes shoulder and body blocks, demonstrating several varieties of these. Importance of good physical condition, practice, and experience are emphasized. Special photography used to illustrate different points.

OFFICIAL FOOTBALL, j-s-c-a, 3 reels, color, \$1.00.

This film portrays the play situations covering the basic rules of football as played under the National Alliance Code. The theme is centered around the official interpretations of the rules as they apply to the three teams always present on the field, the home team, the visiting team and that all important third team, the officials.

TACKLING IN FOOTBALL, j-s-c-a, 1 reel, \$1.50.

Tackling properly is shown as the result of application of certain fundamentals: good physical condition, speed, body placement, drive, sure grip, timing, and body control. Shoulder and cross body tackles are demonstrated in various ways, with special instructions for safety and means of a reducing shock.

THIS IS FOOTBALL, e-j-s-c-a, 4 reels, color, \$1.00.

Centered around the four S's—science, speed, skill and safety. Demonstrations cover basic rules that will aid the official, coach, players, and fan. Play situations are used to establish standards.

KNOW YOUR FOOTBALL, e-j-s-c-a, 3 reels (30 min.), color, \$1.00.

Gives a visual approach to the written rules. Play situations challenge the viewer's knowledge and clarify many rules interpretations. Recommended for fans, officials, coaches and players.

players continue to spear in blocking and tackling, either inadvertently or as a definite tactic, said William E. Newell, executive secretary of the National Athletic Trainers Association and head athletic trainer at Purdue University. Players should be selected and trained more carefully, he said, particularly boys at two physical extremes—those with long, thin necks and those with short, stubby necks. "Protective equipment is no guarantee against serious or even fatal football injuries," Newell said. "With proper attention, however, injuries from the so-called spear or butt block can be eliminated or greatly reduced in football at all levels."

Said Clifford B. Fagan, executive secretary of the National Federation of State High School Athletic Associations: "There is absolutely no place in interscholastic football for 'spearing.' Responsible athletic administrators and football leaders everywhere deplore the fact that a small number of coaches teach it. The high rate of serious injury which results from 'spear-

(Continued on Page Twelve)

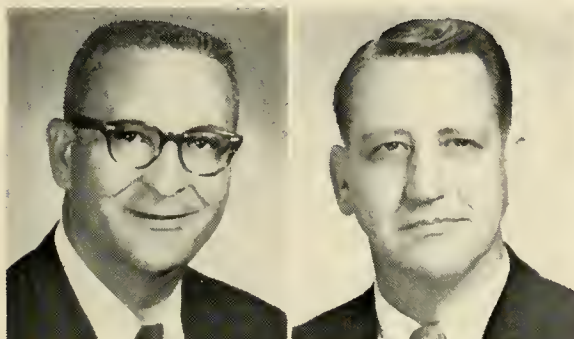
The Kentucky High School Athlete

Official Organ of the
Kentucky High School Athletic Association

VOL. XXX—NO. 2

SEPTEMBER, 1967

\$1.00 Per Year



Don R. Rawlings
President

Morton Combs
Vice-President

Don R. Rawlings, Director of Administration of the Danville Public Schools, was elected President of the K.H.S.A.A. Board of Control at the summer meeting of the directors, held on July 29, 1967. Morton Combs, Assistant Superintendent of Knott County Schools, was elected Board Vice-President. The two men represent respectively Sections 6 and 7.

Mr. Rawlings, former Danville principal, is a graduate of Eastern State University, with an M.A. degree from the University of Kentucky. He is in his eighteenth year at Danville, his seventh as a K.H.S.A.A. director. He is a Past President of the Central Kentucky Athletic Conference and a Past President of the Danville Kiwanis Club. He was in the Navy for three years during World War II.

Don R. Rawlings was born in London, Kentucky. He attended the London City Schools and graduated from London High School. Upon his discharge from the Navy, he attended Sue Bennett College at London, later transferring to Eastern Kentucky University.

Mr. Rawlings is married to the former Miss Irene Greer of London, and they have two sons, Gary Don and Kevin Ray. He is a member of the Lexington Avenue Baptist Church of Danville. He belongs to numerous education associations.

Morton Combs, a graduate of the Hazard High School, received his A.B. degree from Kentucky Wesleyan College and his M.A. degree from the University of Kentucky. He started his teaching career at the Carr Creek High School in 1938; and, except for the 1942-46 period when he was in the Army, has been at this one school as coach and later as principal since that time.

Mr. Combs is married to the former Miss Dale Smith, a native of Knott County. The Combs have two children, Glen and Linda Susan.

Morton Combs is active in the work of his local Lions Club. He is a member of the Baptist Church. His basketball team won the State Tournament in 1956. In 1933 he was named Basketball Coach of the Year by his fellow coaches of the Kentucky High School Coaches Association. He coached the East All-Stars in the 1964 K.H.S.C.A. basketball game.

Attention, Principals!

A list of registered football officials appears in this issue of the ATHLETE. Principals and coaches should study the current list to determine whether or not all officials with whom contracts have been signed have registered this fall. Supplementary lists of officials will appear in subsequent issues of the magazine. By-Law 22 provides that member schools shall use registered officials in all football and basketball games, and that failure to comply with this regulation makes the home school liable for suspension. If there is any question about registration, the official should be asked to present his card.

Attention, Officials!

The attention of all registered K.H.S.A.A. football, basketball and baseball officials is called to By-Law 29, Section 9, which provides that the official shall be supplied with an emblem which he shall wear on his shirt or sweater. This rule will be enforced strictly in 1967-68 as it has been in recent years. The emblem is to be worn on the left shoulder shirt sleeve approximately one and one-half inches below the shoulder seam. The Approved or Certified bar should be worn below the emblem. Failure to wear the emblem will make an official liable for suspension from the Officials' Division of the Association.

Recommended uniforms are as follows:

Football—black and white striped shirt (long or short sleeves), black baseball cap with white piping, white knee pants, black belt, black stockings, black shoes and laces;

Basketball—black and white striped shirt (short sleeves, long sleeves by special permission), black trousers, black belt, black shoes and laces;

Baseball—navy blue or black trousers, black athletic leather shoes (not football shoes), navy blue coat or jacket, navy blue shirt if working coatless, white shirt if wearing coat or jacket, white shirt on bases if all base umpires are dressed the same, umpire's navy cap (no player caps), indicator and mask of choice, inner protector or inflated protector (inflated type if official desires to purchase), black belt, black shoe laces, black tie with white shirt.

Football Examination

Part II of the National Federation Football Examination for officials will be given in Kentucky on Monday, September 18. An official who has been registered for at least one year prior to the current season is eligible to take the examination and work for a higher rating. Officials who hold the Approved rating in football are required to make a minimum percentage grade of 80 in order to maintain this rating from year to year. After an official has received the Certified rating, he continues to receive this rating each year provided that he attends the clinic for that year and has worked in at least six first team high school football games during the previous year. Eligible officials who wish to take the test should write to the State Office at once.

SEPTEMBER, 1967

VOL. XXX--NO. 2

Published monthly, except June and July, by the Kentucky High School Athletic Association
Office of Publication, Lexington, Ky. 40501
Second class postage paid at Lexington, Kentucky.

Editor ----- THEO. A. SANFORD
Assistant Editor ----- J. B. MANSFIELD
Lexington, Ky.

BOARD OF CONTROL

President ----- Don R. Rawlings (1965-69), Danville
Vice-President ----- Morton Combs (1964-68), Carr Creek
Directors -- Alvin Almond (1967-71), Bowling Green; Don Davis (1967-71), Independence; Ralph C. Dorsey (1966-70), Horse Cave; Preston Holland (1965-70), Murray; Foster J. Sanders (1966-70), Louisville; Oran C. Teater (1969-68), Paintsville.
Subscription Rate ----- \$1.00 per Year

*From the Commissioner's Office***Attention, Football Game Managers!**

During the School for Football Officials held in Lexington on August 4-5, certain suggestions were made which, if they are followed, should improve the administration of the game. These were:

1. The referee will ask the game manager to make every effort to schedule his pre-game activities so that the field is clear five minutes prior to the scheduled starting time of the game.

2. The referee will discuss any scheduled half-time activities with the game manager, notifying the coaches of both teams if there is to be a lengthened half-time period and asking the game manager to hold the half-time period to a maximum of twenty minutes in addition to the three minutes of warm-up activity.

These suggestions have the full approval of the Commissioner, and it is hoped that officials and game managers will cooperate in this matter. One conference, the Northern Kentucky Athletic Conference, has a schedule for games starting at 8:00 P.M., which calls for the bands to come on the field for the playing of the Star Spangled Banner at 7:40, a flag raising at 7:50, and the coin tossing at 7:55.

Basketball Clinics

The 1967-68 rules meetings for basketball officials and coaches will be conducted by veteran clinic director Charlie Vettiner. The dates and sites of the meetings are as follows:

September 24, Ohio County High School, Hartford, 1:30 P.M.

September 24, Daviess County High School, Owensboro, 7:00 P.M.

September 25, Tilghman High School, Paducah, 1:30 P.M.

September 25, Christian County High School, Hopkinsville, 7:00 P.M.

*September 26, Rec. Center, Reservoir Hill, Bowling Green, 1:30 P.M.

September 26, Elizabethtown High School, 7:00 P.M.

October 1, Newport High School, 1:30 P.M.

*October 1, Campbell House, Lexington, 7:00 P.M.

October 2, Morehead State University, 1:30 P.M.

October 2, Paul G. Blazer High School, Ashland, 7:00 P.M.

October 3, Pikeville High School, 1:30 P.M.

October 3, Hazard High School, 7:00 P.M.

October 4, Bell High School, Pineville, 1:30 P.M.

October 4, Somerset High School, 7:00 P.M.

October 5, Kentucky Hotel, Louisville, 7:00 P.M.

*Indicates change in meeting site from that previously announced in letter to officials.

Attention, Basketball Coaches!

The dates and sites of the 1967-68 basketball clinics are given on this page of the ATHLETE. Clinic attendance by head basketball coaches is required under the provisions of K.H.S.A.A. By-Law 29-3. Players and other members of the school's coaching staff are invited to attend the clinic. Basketball coaches are urged to bring their scorers and timers to the meetings.

School for Basketball Officials

The Nineteenth Annual School for Basketball Officials was held at the Phoenix Hotel, Lexington, on August 6-7, 1967. Basketball Clinic Director Charlie Vettiner directed the school.

The services of the area representatives who attended the school will be available to Association member schools throughout the basketball season. The men will conduct additional clinics for officials, coaches, and players; and will assist beginning officials in registration.

K.H.S.A.A. area representatives who attended the school were: Rex Alexander, Murray; Charlie Irwin, Hopkinsville; Jerry Kimmel, Beechmont; Bob Gour, Bowling Green; Howard Gardner, Elizabethtown; Claude Ricketts, Louisville; Hubert Loudon, Louisville; Roy Winchester, Bethlehem; Bob Miller, Fort Thomas; Roy Settle, Paris; Bill Wise, Lexington; Bob Foster, Science Hill; Walt Green, Middlesboro; Goebel Ritter, Whitesburg; E. B. May, Jr., Prestonsburg; Ernie Chattin, Ashland.

Minutes of Board Meeting

The Board of Control of the Kentucky High School Athletic Association met at Ken-Bar Hotel, Kentucky Dam Village, on Saturday morning, July 29, 1967. The meeting was called to order by retiring President Sherman Gish at 9:30. Present were Board members Alvin Almond, Don Davis, Ralph C. Dorsey, Preston Holland, Don R. Rawlings, Foster J. Sanders, and Oran C. Teater; Commissioner Theo. A. Sanford, and Assistant Commissioner J. B. Mansfield. The invocation was given by Foster J. Sanders.

Alvin Almond was introduced as a new member of the Board of Control. He stated that he would make every effort to represent his area well and to cooperate with other members of the Board, the Commissioner and his staff to continue the progress of the K.H.S.A.A.

Oran C. Teater moved, seconded by Preston Holland, that the reading of the minutes of the June 8th meeting be waived, since the members of the Board had received copies of these minutes. The motion was carried unanimously.

President Gish stated that the next order of business was the election of the President and Vice-President of the Board of Control. Oran C. Teater moved, seconded by Preston Holland, that Don R. Rawlings and Morton Combs be elected President and Vice-President of the Board of Control respectively by acclamation. The motion was carried, with Mr. Rawlings not voting.

President Gish stated that he had been honored in being asked to serve as President of the Board for the 1966-67 school year, and that it was his belief that the Association had made progress during this time. He thanked the members of the Board for the cooperation which they had given him, turning the chair over to the new President, Mr. Rawlings.

Preston Holland moved, seconded by Ralph C. Dorsey, that Mr. Gish be thanked by the members of the Board of Control for the fine leadership which he had given the Association during the year just ended. The motion was carried unanimously.

(Continued on Page Twelve)

Officials' Ratings on Sportsmanship of K.H.S.A.A. Member Schools in Basketball, 1966-1967

(Continued from August ATHLETE)

SCHOOL	COACH				OTHER SCHOOL OFFICIALS				CROWD				TEAM			
	E	G	F	P	E	G	F	P	E	G	F	P	E	G	F	P
Oneida Institute	44	9	1	0	48	6	0	0	43	9	2	0	48	5	1	0
Owen County	26	16	1	1	29	15	0	0	26	17	1	0	25	16	5	0
Owensboro	43	15	0	1	43	15	0	1	34	24	0	1	35	23	1	0
Owensboro Catholic	36	19	2	4	46	14	1	0	40	19	2	0	38	17	6	0
Owsley County	36	7	1	1	38	6	0	0	34	7	2	1	37	7	0	1
Paducah Tilghman	33	11	2	2	39	7	1	0	31	14	0	2	34	13	0	1
Paintsville	39	1	1	3	40	7	1	2	38	5	0	1	34	8	2	1
Paris	50	8	1	1	52	7	1	0	48	11	1	0	51	8	1	0
Park City	36	8	1	4	39	9	1	0	36	13	0	0	36	10	1	2
Paul G. Blazer	43	7	2	0	47	4	1	0	40	10	1	1	43	8	1	0
Pendleton	68	24	0	1	71	17	2	1	15	38	6	4	49	38	5	1
Phelps	55	4	0	0	55	4	0	0	51	6	2	0	48	8	0	3
Pikeville	52	18	0	0	64	6	0	0	53	11	5	1	48	14	6	2
Pine Knot	46	10	4	4	52	8	2	2	45	16	1	2	45	12	5	2
Pineville	34	8	3	2	41	3	1	2	35	5	4	3	32	9	4	2
Pleasure Ridge Park	22	22	7	3	36	17	0	1	20	29	2	3	22	27	4	1
Powell County	32	11	1	0	38	6	0	0	35	7	1	1	33	11	0	0
Prestonsburg	28	6	2	0	34	2	0	0	29	7	0	0	30	3	3	0
Prichard	38	6	1	0	38	7	0	0	35	9	1	0	36	8	1	0
Providence	53	14	4	1	55	15	0	0	35	31	4	2	45	20	6	1
Pulaski County	28	9	6	3	45	1	0	0	39	7	0	0	3	7	0	0
Raceland	36	7	0	0	34	9	0	0	30	11	2	0	27	13	0	3
Red Bird	37	4	2	0	39	1	3	0	36	6	0	0	34	4	4	0
Redland	30	17	2	2	35	17	0	0	25	18	6	3	34	16	2	0
Richardsville	34	15	1	2	32	15	3	2	34	16	1	1	34	17	1	0
Riverside Christian	23	0	0	2	23	2	0	0	22	2	1	0	21	3	1	0
Rowan County	51	8	4	0	53	10	0	0	45	17	0	1	46	15	2	0
Russell	43	9	3	1	43	11	2	1	36	14	2	4	39	13	3	1
Russell County	40	14	3	2	53	6	0	0	45	10	2	2	48	9	2	0
Russellville	30	6	1	1	35	3	0	0	28	9	0	1	26	10	1	1
Sacramento	38	10	3	2	45	7	1	0	27	23	2	1	33	14	2	5
St. Agatha Academy	42	13	1	3	49	9	0	0	49	10	1	0	43	14	1	1
St. Augustine	40	6	1	0	39	8	0	0	37	9	1	0	41	5	1	0
St. Catherine	48	11	2	0	49	11	0	1	46	12	3	0	44	17	0	0
St. Charles	35	8	0	0	35	8	0	0	28	15	0	0	29	12	2	0
St. Francis	42	8	1	1	42	10	0	0	37	11	2	2	38	11	1	2
St. Henry	62	31	6	2	73	22	0	0	58	43	1	2	61	33	6	2
St. Joseph Prep	52	10	1	0	54	9	0	0	47	13	2	1	48	15	0	0
St. Mary	19	21	0	6	29	13	1	2	20	16	4	6	30	9	3	3
St. Mary's	49	19	7	5	62	17	1	0	50	24	6	0	52	19	8	1
St. Patrick	36	18	1	0	39	16	0	0	34	19	1	0	38	17	0	0
St. Romualds	12	2	1	0	12	3	0	0	11	4	0	0	11	3	1	0
St. Thomas	72	32	2	0	74	21	1	0	59	41	6	1	62	43	2	0
St. Vincent	39	3	3	3	40	5	0	1	34	11	0	3	33	13	0	3
St. Xavier	42	30	4	2	50	27	1	0	38	37	3	0	47	27	3	1
Salyersville	58	9	0	1	63	3	1	1	44	19	4	1	57	8	3	1
Sandy Hook	60	3	3	0	63	3	0	0	54	9	2	1	54	10	1	0
Sayre	39	10	0	2	41	10	0	0	37	11	2	1	38	11	2	0
Scott County	37	27	4	1	40	29	0	0	30	38	1	0	32	33	4	0
Scottsville	44	9	1	0	46	8	0	1	39	15	0	0	37	15	1	1
Sedalia	27	17	5	1	33	17	0	0	27	23	0	0	25	24	1	0
Seneca	39	29	4	1	43	28	0	2	31	29	8	5	34	33	5	1
Shawnee	38	20	2	2	41	21	0	0	31	31	0	0	30	29	3	0
Shelby County	42	14	0	2	46	11	1	0	37	16	2	3	41	16	1	0
Shelbyville	46	5	1	0	47	5	0	0	40	10	2	0	45	7	0	0
Shepherdsville	33	9	3	1	36	9	0	1	38	4	3	1	34	7	4	1
Shopville	40	12	2	1	48	7	0	0	42	10	3	0	39	13	3	0
Silver Grove	42	25	8	3	56	16	1	1	12	38	13	14	21	27	18	11
Simon Kenton	44	38	8	4	65	31	0	2	38	47	6	3	40	42	7	5
Somersets	37	14	1	1	43	10	0	0	32	17	4	0	37	14	1	1
South Hopkins	33	15	4	0	37	14	1	0	32	18	1	1	35	15	2	0
South Marshall	26	11	6	3	30	15	1	0	24	18	1	3	27	17	1	1
Southern	47	20	3	1	53	16	2	0	37	28	6	0	40	28	3	0
Stanford	31	19	0	1	41	10	0	0	27	15	6	3	28	16	7	0
Symsonia	32	14	1	0	37	7	3	0	27	19	0	1	28	16	0	3
Tates Creek	45	18	2	2	49	18	0	0	39	24	4	0	39	24	0	0
Taylor County	42	15	0	1	40	18	0	0	38	20	0	0	38	19	1	0
Taylorsville	44	8	1	1	46	7	1	0	44	10	0	0	45	8	0	1
Temple Hill	32	13	5	2	39	13	0	0	31	20	1	0	30	22	0	0
Thomas Jefferson	29	29	3	0	39	22	0	1	25	31	6	0	31	30	1	1
Todd County Central	33	15	4	1	37	16	0	0	28	18	3	4	30	21	1	0
Tolllesboro	53	9	1	0	54	9	1	0	43	17	3	1	51	12	1	0
Tompkinsville	34	8	5	2	38	10	1	0	23	21	4	1	28	19	1	1
Trigg County	33	7	1	4	35	9	0	1	33	12	0	0	34	11	0	0
Trimble County	19	23	4	0	26	17	0	0	23	20	2	0	24	19	2	0
Trinity	36	28	2	1	43	23	1	0	30	31	5	1	36	24	4	3
Union County	34	13	3	3	43	9	2	0	37	15	1	0	42	11	0	0
University	30	14	0	1	33	12	0	0	26	15	3	1	24	19	2	0
Univ. Breckinridge	42	7	4	1	49	5	0	0	41	11	2	0	44	6	4	0
Valley	27	19	4	3	40	12	1	0	30	21	1	1	28	21	3	1
Van Lear	36	4	1	1	38	2	1	1	32	7	0	3	34	5	1	2
Virgie	40	12	3	2	49	8	0	0	41	15	1	0	38	14	4	0
Waggener	44	22	2	3	49	27	0	0	42	27	1	1	46	22	2	1
Walton-Verona	32	33	5	2	45	22	1	2	28	34	6	4	28	37	3	4
Warfield	42	4	0	1	42	3	0	0	37	8	0	0	39	5	1	0

Warren County	41	19	0	2	48	12	1	0	37	21	3	1	34	23	4	2
Washington County	36	7	3	1	38	8	1	0	29	14	3	1	35	11	0	1
Wayland	57	7	1	1	60	4	1	1	53	9	3	1	52	12	1	1
Wayne County	37	15	0	0	47	5	0	0	39	13	0	0	41	11	0	0
Webster County	65	15	4	6	77	10	2	1	58	27	2	3	66	20	2	2
West Hardin	44	6	1	0	46	5	0	0	38	13	0	0	37	13	1	0
West Hopkins	51	8	0	0	50	8	1	0	41	11	3	3	46	13	0	0
Western (Louisville)	27	19	7	2	37	15	1	1	31	21	2	1	30	23	1	1
Western (Sinai)	47	12	2	0	49	12	0	0	46	14	1	0	39	19	2	1
Westport	29	26	4	6	41	19	1	4	24	29	6	6	32	27	3	3
Wheelwright	33	6	2	2	35	5	2	1	27	9	3	4	27	9	5	2
Whitesburg	33	8	2	2	35	6	3	1	29	9	5	2	31	11	3	0
Whitley City	47	11	0	2	47	11	1	1	38	16	5	1	43	12	5	0
Williamsburg	48	10	1	0	51	5	1	2	46	11	1	1	43	11	4	1
Williamstown	28	25	6	5	41	20	2	1	26	30	6	2	31	23	8	2
Willisburg	23	14	4	1	35	6	1	0	21	18	3	0	20	17	2	3
Wingo	20	17	4	1	28	12	0	1	19	17	3	3	19	17	4	3
Wolfe County	48	9	3	5	59	6	0	0	48	16	1	0	48	16	1	0
Woodford County	30	12	8	1	39	11	1	0	32	16	1	2	33	16	2	0
Wurtland	27	11	8	6	33	15	4	0	31	15	4	2	30	14	7	1

Football Districts and Regions

The football districts and regions for 1967 are as follows:

Class AAA

REGION I

Atherton, Bishop David, Central, DeSales, duPont Manual, Flaget, Iroquois, Male, Shawnee, St. Xavier, Trinity

REGION II

District 1—Butler, Fairdale, Pleasure Ridge Park, Southern, Valley, Western

District 2—Durrett, Eastern, Fern Creek, Jeffersontown, Seneca, Thomas Jefferson, Waggener, Westport

Class AA

REGION I

District 1—Bowling Green, Caldwell County, Christian County, Franklin-Simpson, Hopkinsville, Madisonville, Mayfield, Paducah Tilghman

District 2—Davies County, Henderson, Henderson County, Ohio County, Owensboro, Owensboro Catholic, Union County

REGION II

District 1—Breckinridge County, Elizabethtown, Fort Knox, LaRue County, Meade County, North Hardin, Oldham County, St. Joseph Prep, Shelby County

District 2—Danville, Henry Clay, Jessamine County, Lafayette, Madison, Somerset, Woodford County

REGION III

District 1—Boone County, Boyd County, Campbell County, Covington Catholic, Dixie Heights, Highlands, Holmes, Newport, Newport Catholic, Paul G. Blazer, Russell, Simon Kenton

District 2—Bourbon County, Bryan Station, Franklin County, George Rogers Clark, Harrison County, Madison Central, Tates Creek

REGION IV

District 1—Bell County, Corbin, Cumberland, Everts, James A. Cawood, Knox Central, Middlesboro, Whitley County

District 2—Belfry, Hazard, Leslie County, M. C. Napier, Prestonsburg, Whitesburg

Class A

REGION I

District 1—Crittenden County, Fort Campbell, Fulton, Fulton County, Murray, North Marshall, Russellville, Trigg County

District 2—Butler County, Campbellsville, Caverna, Cumberland County, Glasgow, Greensburg, Metcalfe County, North Warren, Tompkinsville, Warren County

REGION II

District 1—Bardstown, Eminence, Henry County, K. M. I., Lebanon, Louisville Country Day, Old Kentucky Home, Shelbyville, Shepherdsville, Washington County

District 2—Anderson, Berea, Boyle County, Burgin, Frankfort, Garrard County, Georgetown, Harrodsburg, Ky. School for the Deaf, Mercer County, Sayre, Scott County, Stanford

REGION III

District 1—Beechwood, Bellevue, Carroll County, Dayton, Falmouth, Lloyd Memorial, Ludlow, Owen County

District 2—Bath County, Fleming County, Maysville, M. M. I., Montgomery County, Mt. Sterling, Nicholas County, Paris, Rowan County

REGION IV

District 1—Harlan, Hazel Green, Lily, London, Lynch, Lynn Camp, Mt. Vernon, Pineville, Williamsburg

District 2—Catlettsburg, Elkhorn City, Fleming-Neon, Jenkins, Johns Creek, Louisa, McKell, Morgan County, Paintsville, Pikeville, Raceland, Wheelwright, Wurtland

Hot Weather Hints

Early fall football practice frequently is conducted in very warm and highly humid weather in many parts of the United States. Under such conditions, special precautions should be observed. Otherwise the athlete is subject to:

a) **heat fatigue**, depletion of salt and water due to excessive sweating

b) **heat exhaustion**, excessive depletion of salt and water

c) **heat stroke**, overheating from breakdown of the sweating mechanism

Heat fatigue dulls the athlete's skillful alertness and makes him more vulnerable to injury. The other two heat illnesses can result in serious physical harm and even death; both are preventable.

Heat exhaustion and heat stroke are preventable only by careful control of various factors in the conditioning program of the athlete. Basic, of course, is an adequate health history and health examination prior to participation in practice. With the start of fall practice, it is essential to provide for gradual acclimation to hot weather activity. Equally important is the need to adjust salt and water intake to weather conditions.

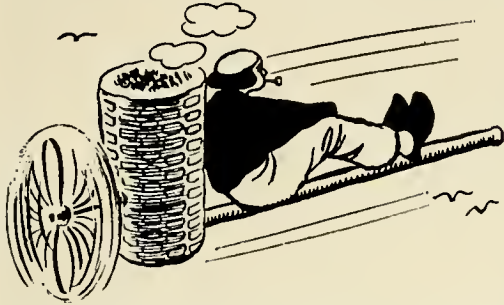
As the athlete becomes accustomed to hot weather activity, he perspires more freely (and thus dissipates body heat) and excretes less salt (and thus conserves sodium). With a graduated training regimen, such acclimation can be expected to take place over a period of about one week.

The old idea that water should be withheld from athletes during workouts has no scientific foundation. In fact, such restriction, by depleting water in the body, can lead to heat fatigue and serious heat illness. During exercise in the heat, it is essential to replace—at least hourly—the water lost by perspiration.

Salt also needs to be replaced daily, particularly during the acclimation period. Extra salting of the athlete's food within the bounds of taste will accomplish this purpose. Salt tablets, particularly on an

(Continued on Page Eleven)

The Flying Dutchman



Are you interested in Kentucky's stout-hearted youthful athletes who overcome one physical handicap after another to engage in school boy sports?

Dave Bishop of Boone County is. When Charlie Ruter and Butch Charmoli learned of Dave's interest in one of Kentucky's lionhearted kids, they suggested that he place the lad in contention for the Game Guy Award for 1968. So it is that young Mike Patrick is the first young man nominated for the honor this new sports year — and he is a dandy.

Take a look at this courageous lad's accomplishments — Mike runs on Boone County High School's track team in the 440 and 880 yard relays as well as the mile relay. Maybe this doesn't excite you but you are bound to stand up and cheer when the Dutchman tells you that in 1965 this brave boy, while helping people who were in a wreck, suffered injuries which necessitated amputation of both arms at the elbow. The Dutchman's open letter to young Mike Patrick follows:

"Dear Mike:

"The Flying Dutchman has the greatest admiration for young fellows like you who are good fighters.

"Whenever the Dutchman learns of a game guy like you, he honors him by sending the Lionheart Award. A number of physically handicapped men and women have been honored because of the game fights they make against their handicap; and I want you to know that everybody feels that you are richly deserving of the Flying Dutchman's Lionheart Award.

"It was Mr. Dave Bishop who told the Flying Dutchman what a swell fellow and a game fighter you are. All of us are proud of you. Display your award proudly because it indicates you are one of Kentucky's favorite sons.

"I am sincerely hoping that I can meet you personally.

The Dutchman"

These candidates for the Game Guy Award of 1968 may be found all over Kentucky if you'll just seek them out. Take an interest in them and they'll be happier — and you will be, too.

The Dutchman salutes the community of Fairdale where Harry Hardin, Jim Streible, Joe Goodman, Carroll Kinnison and Virgil Hall have joined with Hugh Etherton to get a swimming pool for citizens of central Jefferson County. These leaders have rallied the men, women, boys and girls in the building of a bathhouse for the pool. The estimated cost is \$60,000 while the pool represents an investment of \$83,000 by the county. A lot can be accomplished by co-operation! This is the reason the first Abou Ben Adhem citation of the new sports year goes to the Community of Fairdale. Which Kentucky community will you recommend for this award? Write "The Dutchman" at Jeffersontown and give him the story of more examples of good com-



Al LeCompte

munity leadership in other sections of the Commonwealth.

When we speak of accomplishments the Dutchman never ceases to be amazed at the Y.M.C.A. sports program promoted and conducted by Ernie Chattin in Ashland. If those Ashland people don't have fun and happy living, it has to be that they haven't read the volumes of stories written on Ernie's sports promotions in the "Land of Steel." In Ashland they call him "Ernie, the man of service." Incidentally, Ernie's son-in-law, Bob Mulcahy, is now head basketball coach at the University of South Dakota. You'll remember Bob as the lad who coached Seneca to successive state basketball championships while Kenny Farmer and Garland Cochrane gave him assistance. It's too cold in South Dakota for Kenny and Garland.

In late July the Dutchman huddled with Cliff Fagan in his Chicago office in preparation for the nineteenth School for Basketball Officials which the K.H.S.A.A. staged in August in Lexington. On page 13 of your basketball case book under Rule 9:9-11 we found the following statement made in reference to the new rule eliminating dunking: "The present coverage requires the player to **throw** the ball into the basket." This statement is in error because the ball may be **thrown** or **batted** into the basket. Coaches and officials should make a note of this.

On Sunday, September 24th the basketball clinics open at Ohio County High School at Hartford and close in Louisville at the Kentucky Hotel on Thursday, October 5th. The Dutchman will be conducting these sessions for his twenty-sixth consecutive year. Preceding him as clinic director was Barbourville's Buford Clark in 1940 and 1941, and before Buford was the legendary Bernie Shively. The K.H.S.A.A. believes that to have good sports the state must have good officials. This is the reason for the comprehensive training programs offered by the association in all schoolboy sports.

Is your community interested in the promotion of parks and recreation programs? Here in Jefferson County a park and recreation brochure of this county's program containing eighty-five color pictures is now available for the asking. It should be helpful to communities interested in the improvement of their own park and recreation facilities. If you want one, write the Dutchman and enclose ten cent in postage to cover the mailing costs.

Al LeCompte is the winner of the Corn Cob Pipe of Honor Award for the month of September. There

are roughly about two thousand little boys who got to play baseball during the past seven years because of the hundreds of hours of unselfish service Al has given to their fundamental training and the promotion of the sport of baseball for them. This fellow, Le Compte, is fabulous! Formerly a pitcher with the Louisville Colonels of the old and now defunct American Association. Al could throw a baseball harder than Pee Wee Reese could hit a golf ball. In late August, Al Le Compte had his summer graduation for his young baseball players and it was Pee Wee Reese who gave the commencement address. You should have been there! You've earned this award, Al! All of Kentucky salutes your work with boys.

Here's our closing thought for this month: "It's just as vicious to run down people with your conversation as with your car." — The Country Parson.

Schools' Ratings on Basketball Officials

The following ratings were received on basketball officials registered with the K.H.S.A.A during 1966-1967. The numbers following each name represent respectively the number of Excellent, Good, Fair, and Poor ratings given to the official.

Abell, Richard, 3-12-6-4; Abney, Bob, 1-2-0-0; Akridge, Dean, 3-3-2-0; Alexander, Howard S., 0-4-1-1; Alexander, Rex E., 25-16-4-2; Alexander, Ronnie G., 0-3-2-1; Allen, J. Mack, 0-7-1-2; Allen, James D., 2-1-3-0; Allen, Nelson Robert, 15-8-3-0; Allen, Willard, 1-9-3-1; Anders, Raleigh A., 1-10-0-2; Anderson, Edward L., 0-4-0-1; Anderson, George, 0-1-1-0; Anderson, Glenn S., Jr., 0-1-1-0; Arbuckle, Kenneth, 2-12-6-1; Ard, L. J., 1-0-3-2; Arflin, Tracy T., 0-1-1-2; Asher, Tony J., 3-9-7-2; Ausmus, H. William, 3-8-10-1;

Baker, Billy B., 0-2-0-0; Baker, Robert M., Jr., 2-9-1-1; Ballaban, Thomas, 9-11-0-0; Bankemper, Thomas, 2-6-0-0; Barker, Walter D., 4-6-1-0; Bates, Bob, 0-2-0-0; Bates, Gardner, Jr., 7-3-0-2; Bearden, James T., 0-3-1-1; Bell, Clarence T., 8-6-4-1; Bennett, Gene, 3-3-0-1; Bennett, Robert K., 0-1-0-0; Benzinger, Joseph, 5-7-6-1; Bero, James J., 0-6-0-2; Berry, William, 0-2-1-2; Bienick, Stanley A., 0-2-0-0; Bishop, Heulyn, 7-8-1-1; Bisig, George, 3-4-0-1; Bisig, Roland A., 0-1-0-0; Blackburn, Adrian, 0-3-0-0; Blackwood, Tom, 7-16-1-1; Blankenship, Zeb, 1-8-0-0; Blevins, Boone, Jr., 11-19-0-0; Bowling, Roy, 2-9-1-1; Boyles, Paul E., 15-14-6-4; Bradshaw, Bill, 3-6-0-0; Bradshaw, Frank C., 2-8-1-1; Brashear, Loy Ray, 19-23-1-2; Brill, Jonn W., 0-0-1-0; Brizendine, Vic, 21-17-5-6; Brock, Alben, 7-14-2-3; Brock, John D., 1-3-2-0; Brock, John H., 3-11-1-1; Brock, Lavone E., 0-0-1-0; Brown, Billy C., 6-8-5-0; Brown, E. C., 15-19-6-3; Brown, J. Carlton, 5-12-0-0; Brown, J. W., 18-9-1-1; Brown, Leonard C., 1-2-0-0; Browning, Earl E., 18-33-6-3; Bruner, Jack C., 32-20-5-2; Bryan, Phil, 0-2-0-0; Buis, Nathaniel A., 8-23-4-3; Bunn, Harold, 0-0-0-1; Burch, Billy Wayne, 4-7-3-1; Burchett, Lanier S., 3-31-5-2; Burke, Harry, 20-19-7-3; Burkhardt, James G., 5-3-0-0; Burnett, W. L., 5-1-0-0; Burrows, Walter H., Jr., 0-1-1-0; Butcher, Douglas, 28-20-2-2; Butcher, Granville, 37-24-4-1; Butler, Donald A., 0-3-1-0; Butler, Jack K., 1-1-0-0; Butler, Robert, 12-24-5-0; Butner, Billy M., 6-36-8-3; Byron, Lou, 1-1-0-0;

Cain, W. Ronald, 3-6-0-11; Caldwell, James A., 19-17-2-1; Calitri, Donald Lynn, 1-0-0-0; Callahan, Thomas Joseph, 1-7-0-0; Callighan, Robert Wells, 0-4-6-0; Campbell, George H., Jr., 0-3-2-0; Campbell, John, Jr., 13-11-3-0; Campbell, Louie, 0-1-0-0; Canady, Ray Blair, 0-10-8-1; Cannon, Chester E., 0-3-2-1; Cantrell, Hubert E., 1-5-1-0; Cagle, Harold E., 16-21-1-0; Carney, Robert L., 0-2-0-0; Carlberg, John H., 8-14-0-0; Carr, Gene P., 3-4-4-0; Carrico, Tommy, 0-0-2-0; Carroll, Joe E., 1-1-0-0; Caruso, Dick, 0-1-0-0; Cash, Randall E., 1-2-0-1; Castle, Jack, 4-3-3-0; Chambers, Virgil, 0-1-0-0; Chandler, Mel, 8-7-9-2; Chaney, Bobby L., 1-0-0-0; Chaney, Leroy Michael, 0-0-1-0; Chaney, Rex, 1-0-0-1; Chinn, Mike, 0-4-2-2; Cisco, Robert N., 2-2-0-0; Clair, Charles Cecil, 1-1-0-0; Clardy, Barry D., 1-2-4-3; Clark, Kenneth, 0-0-1-0; Clark, Owen B., 7-1-0-0; Clark, Robert L., 1-2-0-0; Clark, Tom, 4-11-0-0; Claypool, Thomas W., 0-1-0-0; Cleavenger, Edward G., 0-0-1-0; Clemons, Sam, 3-4-6-1; Cleveger, Mike, 0-1-0-0; Click, Ezra, 0-0-3-2; Cline, Allen D., 3-6-0-0; Cobb, Michael B., 1-14-6-4; Cochran, Roy H., Jr., 2-12-3-2; Coffey, Marion, 0-1-0-1; Cole, Dickie, 1-2-2-0; Coleman, Daniel Lee, 0-12-1-2; Coleman, James E., 0-1-0-0; Colley, Lynn, 0-0-1-0; Collier, Bernard, 1-14-1-0; Collins, C. E., 4-1-0-0; Collins, Hubert, 8-28-2-4; Colvin, Jack E., 0-1-0-0; Combs, Clarence, 2-0-1-0; Combs, Keith A., 9-25-3-1; Combs, Eugene W., 5-14-5-1; Conley Connie B., 1-1-0-0; Conley, George, 1-0-0-0; Conley, G. Larry, 2-0-1-0; Conley, Lester Art, 0-4-0-1; Conley, Ted L., 14-24-4-4; Cooksey,

Marvin O'Neal, 2-14-0-2; Cooper, Warren, 12-5-0-0; Copley, Sidney M., 3-5-0-0; Cornelison, Walter L., 2-5-0-1; Correll, Elmer Eugene, 0-2-0-0; Cox, Alva J., 1-6-0-1; Cox, Colin Kelly, 5-5-1-0; Cox, Charlie S., 1-1-0-0; Cox, Rufus A., 3-9-2-0; Crager, Bobby, 9-7-2-1; Cravens, Robert L., 3-10-1-0; Crawford, Donald R., 10-24-3-2; Crawford, W. Gordon, 1-2-2-0; Creech, Robert, 0-5-1-1; Creekmore, Ken, 0-1-1-1; Croft, Lewis, 5-30-8-1; Crook, Bill, 0-2-0-0; Culp, Ronald D., 2-17-2-0; Culp, Willard E., 6-1-2-0; Cummins, Itay E., 0-10-2-0; Cundiff, W. John, 0-1-0-0; Cunningham, Julian R., 6-6-0-0; Curtis, Douglas E., 0-3-0-1;

Dame, L. J., 3-26-4-4; Daniel, Roger T., 3-6-1-0; Daniels, Robert A., 1-0-0-0; Daniels, Bob, 8-12-4-0; Dann, Nick, 8-13-1-1; Daugherty, Elwood, 2-11-1-1; Davenport, Bowman, 3-1-0-0; Davis, Harold, 2-23-6-0; Davis, Ralph E., 26-21-4-1; Dawson, Alby, 14-7-1-2; Day, Bill E., 7-12-3-1; Day, Charles R., 2-4-3-0; Day, Jack L., 0-2-0-0; Deaton, Charles B., 4-1-0-0; DeLConte, Art, 1-4-0-0; Denham, Ronald, 2-32-7-3; Kennedy, T. Robert, 1-2-2-0; Dennison, James E., 0-1-0-0; Derrickson, Richard, 2-0-2-0; DeVary, Bill, 19-12-4-0; Dickson, Tom, 0-0-1-0; Dieterle, Owen M., 5-4-1-0; Dills, Bernie, 0-1-0-0; Disken, Jim, 6-6-0-0; Divine, Wayne L., 0-4-0-0; Dixon, Billy Maurice, 7-10-1-1; Dobson, Kenneth, 1-12-0-0; Dockery, Donald, 0-2-0-1; Doctor, Richard P., 0-2-0-0; Donald, Edward W., 1-2-1-0; Dorsey, James, 8-17-2-1; Dotson, John B., 2-4-2-0; Downs, Joseph W., 1-2-0-0; Drake, Richard R., 17-20-5-1; Driskell, Earl, Jr., 10-21-7-3; Duerson, William Robert, 7-32-3-1; Duff, Birchell, 3-0-1-0; Duff, Earl, 16-17-0-1; Duncil, Charles W., 6-8-5-0; Durbin, Hade, Jr., 12-30-4-2; Durbin, Roy, 0-1-0-0; Duvall, James W., 4-11-9-8; Duvall, Thomas Jay, Sr., 15-31-10-6; Dykes, Larry, 0-1-3-2;

Eades, Jim, 6-19-7-3; Edwards, Don A., 27-36-3-2; Edwards, Hugh Richard, 1-1-2-1; Eldridge, James Roger, 1-1-1-0; Ellington, James E., 3-15-6-3; Elliott, Carroll L., 26-23-7-2; Elliott, Humphrey T., 0-4-0-0; Ellis, Johnny, 0-2-1-0; Elmore, Jimmy A., 12-6-1-0; Emery, George A., 4-5-0-0; Evans, Elmo Wade, 0-0-1-0; Everett, Billy N., 3-1-2-1;

Fannin, Jack, 0-0-1-0; Farish, Merlin J., 3-7-2-3; Farlee, Harold, 2-4-0-0; Farley, Jimmy, 3-1-5-0; Farmer, Billie L., 0-14-8-2; Farmer, Jack, 9-18-3-0; Feix, Al, 0-2-0-0; Ferguson, Thomas L., 0-1-0-0; Ferrell, Doc T., 2-4-0-0; Ferrell, Jimmy, 0-6-2-0; Fey, Allen, 0-4-3-2; Finley, Albert R., 15-19-7-3; Finley, Sam, 1-0-0-0; Fish, Leland G., 0-2-1-0; Flowers, Randal B., 0-5-1-4; Flynn, Bobby, 26-15-1-0; Ford, Eddie L., 0-10-4-5; Foster, Berryman E., 0-4-1-0; Foster, Bob, 31-40-0-1; Foster, Eddie P., 0-2-0-2; Foster, J. W., 0-1-0-0; Fowler, Ronald S., 0-1-0-0; Fox, David G., 0-1-0-0; Fraley, Bill, 2-9-6-1; Francis, Fred L., 2-1-0-0; Frank, Charles E., 0-3-0-0; Frazier, Roy D., 0-3-0-0; Fredericks, Rex, 1-5-4-1; Freese, Ollie, 3-9-4-1; Freppon, Tom, 0-5-0-0; Freter, Rex R., 1-5-2-1; Frey, William R., 0-1-0-0; Fritz, Robert G., 0-1-0-0; Fritz, Sherman, 18-31-1-0; Frye, Gil, 1-4-0-0; Fuller, John R., 2-16-2-1;

Gabbard, John B., 1-3-1-1; Gaines, Harvey, 3-1-1-0; Gaither, Gene, 7-27-5-1; Galuk, Walter M., 2-5-2-2; Gaylen, Douglas E., 1-10-0-2; Gardner, Howard E., 5-6-1-0; Garwood, David, 1-0-0-0; Gentry, Dale J., 6-10-8-3; Cettler, John F., 1-24-5-3; Gibbs, Harold, 1-0-0-0; Gibson, Carl, 1-7-0-1; Gibson, Fred W., 3-6-0-1; Gilbert, Gerald L., 38-28-4-1; Gilbert, Lawrence, 5-7-4-0; Gilbert, William Curtis, 6-8-0-0; Gill, Joe, 1-11-1-1; Gilman, Ronald R., 0-7-1-0; Giordano, Al, 1-1-0-0; Golden, Billy Joe, 45-22-1-0; Goley, Jim, 5-28-8-0; Goodall, Walter J., 1-2-4-1; Goodin, Shirley G., 1-4-0-1; Goodman, Jack, 15-15-0-1; Goodman, Jimmy Richard, 0-1-0-0; Gour, Bob, 30-24-5-1; Gover, Luid J., 0-1-0-1; Grace, H. E. Jr., 7-6-3-1; Graham, James E., 3-15-0-0; Gray, Raymond, 3-12-1-2; Green, Walt, 18-19-1-2; Grigsby, Pete, Jr., 13-12-0-0; Grooms, Roger, 1-1-0-0; Gustafson, Al, 13-14-0-0;

Hagan, Joe, 2-1-0-0; Hagen, William R., 3-1-0-0; Hall, Charles E., 2-0-0-0; Hall, Mac, 5-4-0-1; Hall, William W., 0-2-0-0; Ham, Gerald, 1-18-15-4; Ham, Ronald, 2-3-1-2; Hamm, Harold D., 0-6-1-0; Hammock, Don L., 2-7-1-2; Hammons, Norman, 13-12-7-5; Hardin, Carl Ray, 3-2-5-2; Hardin, Don G., 12-18-4-2; Hardin, Jack H., 1-2-0-0; Hargis, Noel, 0-1-0-1; Harmed, Vic, 34-23-4-1; Harp, Kenneth R., 1-1-0-0; Harper, Dennis, 2-0-0-0; Harper, Randall H., 0-1-0-0; Harper, Robbie, 23-31-4-1; Harris, Billy, 6-18-8-3; Harris, Larry R., 1-0-2-2; Harris, Wayne, 0-4-6-2; Harrison, John L., 10-27-3-1; Hartman, Robert E., 1-1-0-0; Hatfield, Cecil E., 2-6-2-0; Hatfield, Dennis, 0-0-1-0; Hausfeld, Walter, 0-1-0-0; Hayden, Samuel J., 6-23-3-5; Haynes, John, 0-5-1-1; Haynes, William T., 1-15-3-0; Heldenbrand, John, Jr., 1-1-0-0; Henden, Charles, 0-0-4-1; Hendrix, Jack, 1-4-0-0; Henson, Tony C., 1-15-7-3; Hewitt, R. T., 21-19-0-5; Hicks, Floyd E., 0-0-1-0; Hill, Earl F., 16-22-7-7; Hinkle, Melvin B., 6-0-0-0; Hinton, E. Henry, 17-14-3-4; Hinton, Noah S., Jr., 0-1-0-0; Hitt, Billy D., 0-1-0-0; Hofstetter, Joe, 18-10-2-0; Holeman, Bill R., 2-5-1-0; Hollingsworth, Ralph D., 1-1-0-0; Holt, Robert E., 5-13-3-2; Holthouser, Ora L., 4-12-2-2; Holton, Ray, 1-0-0-1; Hook, B. B. Jr., 11-19-10-4; Hook, Don, 0-2-0-2; Horn, Everett, Jr., 6-12-2-0; Horsman, Bill, 5-9-1-0; Howard, Bruce L., 14-23-2-3; Howard, Carl, 0-18-2-0; Howard, Jimmy D., 0-8-2-0; Howard, Robert E., (Kettle Island) 1-7-4-0; Howard, Robert E., (Louisville) 3-5-1-3; Hubbard, David, 2-7-0-1; Hubbs, Cletus L., Jr., 2-6-0-1; Hudnall, William E., 2-2-0-0; Hughes, Charles, 28-11-0-0; Hughes, Paul P., 21-23-5-2; Huitt,

Fred, 6-8-0-0; Hume, Charles, 4-25-10-8; Hunley, Neil P., 17-17-4-1; Hurley, Robert, 0-3-0-4; Hutchens, Jim, 2-7-2-1; Hutchinson, Jack T., 1-12-0-1; Huter, James J., 4-5-0-0; Hyatt, Bob, 9-9-1-1; Hyland, F. D., 4-0-2-1;

Idol, Billy Joe, 7-22-8-5; Ingraham, Gary J., 0-2-3-0; Ingram, William R., 0-0-0-2; Irwin, Charles, 20-13-2-1; Jackson, Robert H., 0-3-0-0; Jahnigen, Robert E., 0-1-0-0;

James, Gene, 0-0-0-1; Jenkins, James D., 6-16-3-2; Jenkins, Walter L., 0-0-0-2; Jent, Richard, 0-2-0-0; Johnson, Gene B., 2-2-4-0; Johnson, Harry B., 9-17-6-2; Johnson, Jack D., 4-6-0-0; Johnson, James M., 22-16-0-3; Johnson, Jimmy I., 0-1-0-0; Johnson, Leroy, 0-1-0-0; Johnson, Robert L., 0-0-3-0; Johnson, Ronald L., 0-9-3-1; Johnson, W. Bernard, 12-14-3-1; Johnson, Walter, 29-38-1-1; Johnson, Willie Bob, 0-3-0-1; Jones, Carson G., 1-13-11-6; Jones, Daniel R., 1-1-0-1; Jones, Joe S., 0-6-1-1; Jones, Paul, 1-1-1-0; Jones, Robert L., Jr., 2-1-0-0; Jones, William L., 5-22-5-0;

Kautz, John Robert, 0-1-0-0; Kays, Herbert S., 3-1-0-0; Kazze, Allan 2-1-0-0; Keatley, James H., 0-7-0-0; Keeling, Joe, 0-1-0-0; Keeton, C. E., 3-13-9-3; Kelly, Charles R., 0-6-1-0; Kileoynne, James D., 0-0-3-0; Kimmel, Jerry, 42-38-3-2; Kinder, Tommy M., 0-1-0-0; King, James A., 34-21-5-0; King, Raymond H., 0-3-0-0; Kinney, Charles L., 0-6-0-0; Kirk, Floyd Charles, 0-1-0-0; Kitchen, Leslie, 0-0-0-1; Knight, Bill, 22-18-2-2; Kuhl, Lawrence, 17-15-0-0;

Ladd, Ronald E., 0-3-2-0; Lambert, Irvin, 3-10-0-3; Landers, John F., 1-0-0-0; Latkovski, Andy, 1-2-1-0; Laubheimer, Don T., 25-34-8-1; Lawson, Rondall, 6-8-1-0; Lawson, Rondell, 20-17-5-6; Layne, Bert, 0-0-1-0; Leahy, Pat, 0-1-0-0; LeQuire, Harold M., 14-14-0-1; Lester, J. L., 1-11-0-0; Lewis, Jerry Burl, 0-2-0-0; Lile, Clyde F., 2-8-2-2; List, Frank A., 11-17-2-0; Lloyd, Birt Leonard, 0-0-1-0; Long, Bill, 3-13-0-0; Long, James E., 0-0-0-1; Long, Robert F., 0-11-0-1; Longo, Richard, 9-4-4-1; Louden, Hubert C., 42-36-4-4; Loudy, Kenneth, 8-10-3-3; Lowe, Gene, 24-30-5-5; Lowe, James David, Jr., 2-2-1-1; Lucas, Gene T., 17-13-3-1; Lucas, Jack G., 10-13-4-3; Luebberts, Leonard, 1-2-0-0; Lurker, Mel, 2-2-2-0; Lusby, George, 12-16-2-5; Lytle, William Price, 7-10-4-1;

McBride, W. Kenneth, 4-5-0-0; McCargo, Frank J., 9-16-7-4; McBure, William S., 23-26-3-1; McCowan, Connell, 2-7-2-0; McCoy, Hayse, 14-25-6-3; McGehee, Gordon, 14-16-5-3; McClasner, Galen, 1-6-3-1; McGlothlin, Leonard, 0-1-0-0; McGuire, Herbert, 1-13-2-1; McKenzie, Robert, 7-21-7-1; McKenzie, Robert L., 2-2-0-0; McLane, Albert, 50-34-6-1; McLean, Gordon, 6-11-1-0; McMenama, John H., 0-1-1-0; McMillin, Larry L., 4-3-0-0; McNamee, Jack, 2-1-0-0; McPike, Ray S., Jr., 2-4-0-3;

Madon, Robert L., 27-15-3-4; Maines, George E., 24-34-3-2; Marcum, Homer F., 0-1-0-0; Marema, Jack G., 0-1-0-1; Marshall, Fred, 1-1-0-0; Marshall, Glenn Roger, 1-0-0-0; Marshall, Tivis N., 6-8-3-1; Martin, Carl T., 2-7-0-0; Martin, Sam, Jr., 3-14-0-0; Mauney, Bill, 2-3-0-0; Maxwell, Robert B., 0-1-0-0; May, E. B., Jr., 23-37-5-3; Mayes, Edward, 2-3-1-0; Mayfield, Clarke, 9-8-0-1; Maynard, Joe E., 4-2-7-3; Maynard, Lonnie, 0-2-0-0; Meade, Foster, 42-13-2-4; Meadows, Marvin, 18-24-3-4; Meredith, Denny E., Jr., 10-29-8-1; Metzger, Donald R., 6-11-1-3; Meyer, Bud, 0-14-2-1; Mickey, Elbert W., 3-0-0-0; Middleton, Johnny, 8-7-1-4; Milbern, Dan, 4-19-3-0; Miles, Marvin, 0-7-3-1; Miles, Robert J., 0-8-1-0; Miller, Bob, 22-18-0-0; Miller, Ferrel, 5-18-1-0; Miller, John D., 2-0-0-0; Miller, Rex J., 1-0-1-0; Miller, Victor L., 0-2-2-0; Monahan, Ed., 2-1-0-0; Montgomery, Chester M., 20-28-2-2; Mooneyhan, James H., 6-6-3-1; Moore, James E., 2-4-2-0; Moore, Robert, 19-28-7-0; Moore, Roy, Jr., 3-13-5-0; Morse, Richard K., 25-21-4-1; Moser, Rudy Clay, 38-40-2-3; Mudd, Ed., 7-10-4-4; Mulligan, J. T., 1-2-1-0; Murray, James Paul, 1-5-1-0; Murrell, Allen Leslie, 6-26-6-2;

Nash, Dennis B., 11-10-3-2; Neal, Gene, 4-12-1-0; Nevil, Vernon E., 12-3-0-0; Newman, Bill, 8-4-1-0; Newman, Larry, 1-3-1-1; Newman, Larry Glen, 0-1-3-0; Nickell, Charles W., 0-1-0-0; Nixon, Jim, 5-11-1-2; Noble, Howard W., 2-5-1-0; Nord, Ed., 2-6-1-1; Norwood, Donald V., 0-0-1-0; Norwood, Thomas R., 8-6-4-2; Nunemaker, John, 0-5-4-0;

Oldham, John H., 0-4-0-1; Oller, Jerry, 2-1-0-0; Omer, Harold G., 2-2-3-3; O'Nan, Harold L., 0-4-1-1; O'Nan, Norman, 15-24-3-3; Osborne, Larry Joe, 1-1-2-0; Osborne, Virgil F., 3-10-1-0; Otis, Billy, 0-1-0-0; Overton, Frank, Jr., 1-1-0-0; Owens, Bruce E., 2-0-0-0;

Pace, Donald, 2-5-0-0; Pack, Donald, 1-8-0-0; Pack, W. James, 33-41-2-2; Padgett, R. K., 1-11-3-0; Page, Richard H., 0-2-4-3; Park, J. M., 3-3-1-1; Parker, Francis V., 0-2-0-0; Parker, Joseph H., 0-0-1-0; Parrish, Dale C., 0-3-0-0; Parrott, Lanny L., 26-18-3-0; Payne, Gayle, 7-10-2-2; Peay, Curtis E., 1-3-1-0; Peecher, W. Lloyd, 0-7-2-1; Peeno, Harry R., 0-6-7-1; Pence, William Jerry, 0-7-5-1; Penix, Robert Ferrell, 11-26-6-0; Pergem, Nard, 21-11-1-2; Perkins, James E., 4-8-4-1; Perkins, James Melvin, 1-0-0-1; Perry, E. James, 8-18-5-3; Perry, Tom, 0-3-0-0; Peters, Arthur, 0-2-0-0; Phelps, Ralph, 7-15-4-3; Phelps, Ray, 7-17-1-0; Phillips, Harold, 2-0-1-0; Pietrowski, Paul, 0-9-1-1; Poe, James R., 0-2-0-0; Points, Charles, 4-16-4-0; Polston, Billy D., 0-0-1-0; Poppas, Nickolas, 1-1-0-2; Prater, Rondel R., 3-4-0-0; Prather, Wilbur E., 6-15-4-1; Prewitt, Shelby, 1-2-0-1; Price, James E., 2-25-5-6; Proffitt, Lawrence K., 0-1-1-0; Purcell, Billy D., 0-3-0-0;

Rader, J. Douglas, 0-0-2-0; Radjunas, Eddie, 1-4-0-0; Radjunas, Stan, 7-9-2-1; Raikes, Larry D., 5-1-0-1; Rainey, James C., 7-3-2-1; Rakel, Bob, 4-5-5-1; Ramey, Herbert D., 4-1-1-0; Rawlings, Harold, 3-6-2-3; Redden, Robert B., 2-2-1-0; Redman, Melvin, 3-1-0-0; Reed, Charles R., 19-8-0-2; Reed, Gordon, 28-17-0-2; Reinhardt, Myron Stanley, 39-23-1-1; Reliford, Paul G., 2-8-3-0; Reschar, John V., Sr., 1-13-0-0; Reule, Ronald, 4-1-0-0; Rexroat, Jerry Lawrence, 17-15-1-0; Rhodes, Cecil, 2-6-3-0; Rice, William L., 0-1-0-0; Ricketts, Claude O., 14-21-3-0; Ricketts, Donald R., 3-1-0-0; Rieman, Robert S., 0-1-0-0; Riggins, Jason M., 0-1-0-1; Riggs, Floyd L., 1-7-0-0; Ring, Bill, 11-20-3-4; Rister, Edgar L., 23-18-1-2; Ritter, Goebel, 12-6-1-0; Roberts, Kenneth G., 0-1-0-0; Roby, Joseph L., 1-10-2-1; Robinson, Don L., 4-12-1-0; Robinson, Jackie A., 0-1-0-0; Roe, Doyle, Jr., 2-9-3-0; Roekers, Bernie, 0-2-2-1; Roekers, Walter, 1-1-0-0; Roessel, Joseph, 1-5-0-0; Rogers, Howard D., 22-25-1-3; Roller, Otis, 1-5-4-3; Rolph, Harold J., 0-1-0-0; Romer, Dick, 3-5-4-1; Rose, Wally C., 10-4-2-2; Rowe, Steve, 0-0-0-1; Rubarts, Leland G., 0-24-3-3; Runyon, Tommy Dean, 8-13-3-1; Russell, Allen, 25-24-7-7; Russell, Eugene, 0-1-1-0;

Sadler, George A., 0-3-0-1; Sagers, Robert M., 1-4-0-0; Salyer, Henry E., 0-3-3-0; St. Clair, Robert L., Jr., 30-15-1-1; Sallee, Alan Lee, 0-1-3-0; Sammons, Terry Lynn, 0-2-0-0; Sams, Glenn, 1-5-4-2; Saylor, Lanny Ross, 1-1-0-0; Saylor, Carlee, 0-5-5-2; Schad, Jim, 1-5-0-0; Schleicher, Richard L., 1-1-0-0; Schlich, Paul, 5-14-3-0; Schmidt, Frank L., 1-2-0-0; Schmitt, Paul E., 1-1-0-0; Scott, Paul Douglas, 0-1-0-0; Sears, Wilson, 6-11-4-1; Seavers, Joseph E., 2-4-1-2; Sellier, Edward F., Jr., 1-13-0-1; Selvy, Curt, 14-11-0-1; Settle, Roy G., 1-1-0-0; Sexton, Steven C., 4-9-2-1; Sharp, Lloyd, 7-19-7-0; Shartzler, E. Philip, 12-25-2-6; Shaw, Earl, 24-35-4-1; Shewmaker, Wayne, 0-1-1-2; Shope, Lowell M., 4-0-0-0; Showalter, John, 2-1-0-0; Shuck, Thomas G., 10-19-6-4; Simpson, Fred C., 1-6-2-0; Sims, Frank D., 15-21-4-2; Sims, Tom M., 2-0-0-0; Singleton, L. Bobby, 5-9-1-2; Singleton, Ronnie H., 3-4-1-0; Sizemore, Aster, 1-5-1-0; Skaggs, Robert L., (Leitchfield) 0-1-0-0; Sledd, Sheldon Dale, 2-1-0-0; Small, William, Jr., 3-14-3-1; Smith, Bill Gene, 4-9-0-3; Smith, Roy M., 5-12-2-0; Smith, Wayne N., 34-19-1-2; Smith, Willard N., 34-17-2-3; Smith, William E., 4-4-1-0; Smith, Wyatt "Jack", 12-31-5-0; Smithson, Richard A., 13-3-0-0; Solomon, Jim, 2-16-5-6; South, Douglas E., 0-2-0-0; Sparks, Keith E., Jr., 1-6-1-0; Spaulding, Stan, 0-2-0-0; Speck, Michael E., 18-28-6-3; Spencer, Irv, 16-19-2-1; Spiceland, S. E., 1-20-1-2; Spoonamore, Jim, 6-22-1-0; Stanford, Jack, 2-2-1-0; Staples, Jerry, 0-0-2-0; Stauffer, Frank, 2-2-0-0; Steenken, William Robert, 7-5-0-0; Stephenson, Harry S., 16-10-2-1; Stephens, Herbert D., 3-2-2-0; Stiff, Maurice, 17-21-1-7; Stikeleather, Clyde L., 18-14-1-0; Stinson, Charles L., 0-3-0-0; Stoess, Henry L., 7-14-1-2; Stovall, Terry, 0-1-0-0; Stovall, Tom E., 1-4-1-2; Strain, Richard P., 16-24-5-1; Strong, Arnett, 35-18-0-2; Suetetto, Dick, 1-3-0-0; Sullivan, Dan L., 2-6-0-0; Sullivan, Don Chris, 28-14-3-1; Sumner, Harold Carl, 7-9-0-2; Switzer, J. Richard, Jr., 0-6-2-1;

Tackett, Jay, 4-1-0-0; Tackett, Johnny Carmel, 0-0-1-0; Tarlton, Thomas, 6-11-1-5; Tate, Harold D., 1-8-1-1; Taylor, Ed, 32-29-1-0; Taylor, Frank, 3-4-0-0; Taylor, Jesse, 1-22-1-1; Taylor, Rogers E., 5-1-0-1; Thomas, Billy Gene, 0-2-0-1; Thompson, Houston, 1-1-1-0; Thompson, Jack, 1-8-0-0; Thompson, Ralph, 1-1-0-0; Thompson, Thomas A., 9-14-6-1; Thompson, Thomas Droege, 0-8-1-0; Tinsley, Marion F., 14-24-8-2; Triplett, Herbert W., 59-15-2-0; Tulley, Pat, 10-13-0-1; Turner, Aaron, 6-8-2-0; Turner, James W., 4-7-0-0; Tyre, Donald, 2-7-0-0;

Urlage, Richard, 8-24-5-0;

VanMeter, Kaye Don, 0-4-4-1; VanMeter, McNeil, 0-1-0-0; Vannerson, Duke, 0-17-7-3; Vanover, J. W., 0-9-0-0; Vanover, Walter S., 1-8-4-0; Vanover, Wiley G., 5-0-0-0; Van Tatenhove, Kenneth, 0-1-0-1; Van Zant, Jim, 11-11-3-0; Varble, William, 6-6-3-2; Vaughan, Ronald G., 0-2-0-0; Vaughn, Teddy Ray, 4-5-6-0; Vaught, William A., 0-0-1-1; Vermillion, C. D., 6-7-3-0; Vescovi, Raymond B., 2-9-1-1; Vest, Thomas, 0-2-1-0; Vincent, Johnny, 9-11-3-0; Voorhis, Kenneth, 3-5-1-1;

Wagner, Marvin Rudy, 6-11-0-1; Wallen, Howard W., 1-0-0-0; Waller, Bobbie E., 11-23-2-4; Walsh, Bernard N., 0-1-0-0; Walton, Roy, 7-11-5-2; Ward, Donald E., 0-1-0-0; Ward, Robert, 5-9-6-0; Warrix, Lewis H., 10-21-3-1; Way, James, 3-3-0-0; Wearren, Wade, 6-4-1-0; Weathers, Charles, Jr., 0-1-0-0; Weaver, Ray M., 3-19-4-1; Weber, Thomas C., 1-0-0-0; Weimer, Richard, 0-8-5-2; Wells, Glenn, 2-0-1-1; Wells, Milford, 3-2-1-1; Werkowitz, Jack, 0-1-0-0; Wesche, James Allen, 0-1-2-0; West, John, 6-21-5-7; Weyer, James G., 8-8-1-0; Wheat, Sonny Buell, 0-1-0-0; White, David B., 5-11-5-5; Wickman, James Robert, 8-12-2-1; Williams, Benny, 0-1-0-0; Williams, Jack A., 2-2-0-0; Williams, Jack Gary, 2-3-0-0; Williams, Paul W., 4-2-0-0; Williams, Roger, 14-21-1-0; Williams, S. Jack, 4-4-1-0; Williams, Willie H., 0-4-0-0; Winchester, Roy L., 26-42-2-3; Winfrey, Shelby, 29-15-8-0; Wingfield, Felix G., 5-7-2-3; Wirtz, Howard, 1-13-0-0; Wise, Billy V., 27-12-0-0; Wise, Jack, 31-8-1-1; Withrow, Raymond, 1-5-0-1; Wolfe, Paul A., 1-4-0-0; Wolfe, Roger Dean, 1-1-0-0; Wood, James Randall, 4-3-1-0; Woods, Gene B., 10-24-7-1; Woosley, Travis, 6-24-8-7; Wootton, George B., 1-4-1-0; Woprice, Ronald J., 5-12-2-2; Wray, Robert F., 1-7-0-1; Wright, H. W., Jr., 4-2-0-0; Wright, James Lloyd, 1-2-0-1; Wright, Larry L., 0-1-0-0; Wright, Raleigh F., 1-1-1-0; Wurtz, Emil, 0-1-0-0;

Yelton, Gene B., 0-2-0-1; York, Jim E., 2-3-0-0

Registered Football Officials of the K.H.S.A.A. — 1967

(List Compiled September 1)

If one telephone number is given for an official listed, it is the home phone unless otherwise designated. If two numbers are given, the first number is that of the home phone.

- Adams, Calvin K., 5891-B Adams, Fort Knox, 4-8287, 4-4128
Albright, James R., Route 3 Highland Manor, Shelbyville, 633-4614, Frankfort 564-3256
Allen, Clyde E., Jr., 5215 Coolbrook Road, Louisville, 239-0190, Chicago, Ill., 372-6969
Allison, Roy, Entrada Drive, Frankfort, 875-1871, 564-3740
Anders, Raleigh A., Post Office, Corbin, 528-1837, London 864-6217
Argo, Charles Roland, 523 Bailey, McKenzie, Tenn., 352-2572
Atkinson, Charlie, E. 50 Queen Ave., Lexington
Ayers, Edward L., 625 Laramie Road, Lexington, 277-2333, 277-1161
Back, Phillip A., Box 155, Whitesburg, 633-7190, 855-4001
Bacigalupo, Eddie, Alamo, Tenn., 696-8888, 696-2711
Baisden, Leo E., Jr., 2131 Seventh St., Portsmouth, Ohio, 353-2391, 353-5846
Ballaban, Thomas, 1103 Archland Drive, Cincinnati, Ohio, 522-3024, 761-7600
Bartels, John, 423 Third St., Dayton, 581-4250, 821-0728
Bates, Bob, 2732 Sunrise, Portsmouth, Ohio, 354-2168, 353-1013
Battisti, Edward A., 510 Brocton, Richmond, 623-2457
Beck, C. Norman, 2588 Filson Ave., Louisville, ME 4-1737, JU 2-3511 ext. 352
Beheler, Donald S., 311 Springhill Drive, Paris, 987-1728, Lexington, 233-2000 ext. 3236
Bell, Clarence T., 1228 South 41st St., Louisville, 778-7792, 582-5573
Bennett, Jack C., 6530 Roosevelt, S.E., Charleston, W. Va.
Bennett, Howard, Route 6, Mayfield, 247-3309, 247-3510
Benzinger, Joseph, Jr., 3502 Behymer, Cincinnati, Ohio, 752-3932, 742-2193
Berger, John D., Jr., Route 1, Box 11-A, Toms Brook, Va., 436-3720, 459-3532
Bero, James J., P. O. Box 968, Williamson, W. Va.
Blackburn, Adrian, 407 Scott Court, Prestonsburg
Blackburn, Tennyson R., P. O. Box 2157, Williamson, W. Va.
Blosse, Kermit A., 80 Maplewood Drive, Athens, Ohio, 593-3007, 594-6452
Blanton, Homer, 138 New Hampshire Drive, Ashland, 324-1730
Bocook, Earl, 1102 Beech St., Kenova, W. Va.
Boeh, Bill, 3804 McNicholas, Deer Park, Ohio, 791-8880, 821-9400
Boemker, Bob, 69 Thompson, Fort Mitchell, 331-1708, 721-2700 ext. 350 and 398
Bolte, Fritz, 1059 Roxie Lane, Cincinnati, Ohio, 521-0472, 891-4214
Bordy, Phil, 3308 Stratford, Louisville, 458-7005, 582-3994
Bostie, Tim C., 208 Bridge St., Paintsville, 789-3356, 789-5315
Boswell, William Martin, Route 2, Providence, MO 7-5459
Boyles, Jerry F., 2700 Algonquin, Ashland, 324-6995, 324-1111 ext. 5443
Bradley, Delano R., 1826 Main St., Goshen, Ohio, 625-7741, 271-0422
Brashear, Loy Ray, Route 1, Glendale, 854-2921, 351-3147
Brizendine, Vic, 2711 Lakeside Drive, Louisville, 454-6843, 589-9111
Brock, Alben, Kettle Island, 337-3848
Brock, John H., Ivy Hill, Harlan, 573-5403, 573-3711
Brotzge, Maurice J., 3029 Beals Branch Drive, Louisville, 893-7206, 896-4461
Brown, Bill, 2553 Dell Road, Louisville, 458-4857, 583-0681
Brown, Herman G., Route 2, Shelbyville, 633-2516, Louisville 589-9180
Brown, John W., 975 Waverly Drive, Lexington, 252-0954, 252-3212
Bullock, Ted, 2622 Clays Mill Road, Lexington, 277-0145, 255-1050
Bunn, Gary L., 2718 First Ave., Huntington, W. Va.
Burgess, Oley, Sr., 1708 Syc St., Kenova, W. Va.
Burke, Daniel F., 1115 Maurene, Cincinnati, Ohio, 471-9631, 621-7411
Burke, David Dean, 3137 Carter Ave., Ashland, 324-8846, 324-2144 ext. 70
Burke, Harry R., 328 Arnold Ave., Prestonsburg, TU 6-2796, TU 6-2385
Burkhart, James G., P. O. Box 169, Loyall, 573-1437, 664-3444
Burton, James, 401 Barbour St., Providence, 667-2296, 258-5511
Byars, Michael Kirk, 3531 Lansdowne Drive, Lexington, 278-5142, 254-9895
Caldwell, Charles M., Route 3, Box 296, Proctorville, Ohio, 886-6546, 529-1311
Canaday, Jacy Glenn, 503 Brown St., Vine Grove, 877-5387, 877-5537
Canady, Ray Blair, Court Square, Barbourville, 546-4765, 546-3801
Cannon, Jerry M., Box 326, Sharon, Tenn., 456-2431, 696-5521
Canter, John, 2826 Esther Blvd., Louisville, 451-8218, 587-8832
Carlberg, John H., 227 Main St., Muldraugh, 942-2723, 942-2730
Carlsoo, David A., 2916 Washington, Paducah, 444-7943, 444-6311 ext. 8691
Carr, Billy W., 411 Longview Drive, Franklin, 586-6355
Carr, Virgil Lee, 2924 Fitzwater Drive, South Charleston, W. Va.
Carrico, John, 3831 Chatham Road, Louisville, 458-4007, 582-4626
Cecil, A. Morris, 14 Shaw Lane, Fort Thomas, 441-8427, 381-1480
Chattin, Ernie, 615 Seventeenth St., Ashland, 324-2665, 324-6191
Chinn, Ralph, 3205 Hampton St., Ashland, 324-0683
Clark, John E., 403 Pike, Cynthia, 234-4605, 234-1035
Clark, Lou, 2315 Brighton Drive, Louisville, 459-3540
Clemmons, Sam P., 2057 Heather Way, Lexington, 278-3656, 255-7986
Clusky, Joe, Box 296, Red Jacket, W. Va.
Cochran, Roy H., Jr., 511 Master, Corbin, 528-1697, 864-4330
Coffman, C. Morris, P. O. Box 200, Madisonville, 821-2600, 821-5150
Collins, C. E., 35 Rosehill Drive, Clarksville, Tenn., 647-0154, 798-4425
Collins, Jack, 8333 Jadwin Drive, Cincinnati, Ohio, 821-7791, 721-2610
Collins, Ronald K., 2590 Old Buttermilk, Villa Hill, Covington, 341-0578, 431-9962
Cook, Richard N., 931 Maple, Dayton, 291-6880, 243-3531
Copley, Sidney M., Box 352, Delbarton, W. Va.
Cornwell, James, 506 South Main, Franklin, 586-4327, 586-4451
Cowan, R. L., Sr., 9615 Walnutwood Way, Jeffersonton, 267-6224, 587-1121
Crace, James E., 892 Orchard Park, Hurricane, W. Va.
Craft, Albert B., 345 Glendale Ave., Lexington, 254-5365, 254-0764
Crager, Bobby F., South Lake Drive, Prestonsburg, 886-3682, 886-3891
Crider, Ray, 1120 Frelm Road, Louisville, 368-1196
Cullen, Charles E., 3010 Don Dee Drive, Louisville, 451-3322, 895-0510
Culp, Willard, P. O. Box 565, Eopkinsville, 886-7967, 886-7967
Curutte, James R., 201 E. Eighth St., Huntington, W. Va.
Current, Ellis Ray, 1933 Bellefont Drive, Lexington, 277-1049, 255-4789
Dallman, James W., 12 Center St., Jeffersonville, Ind., 283-7255
Daniel, Ernest H., 2317 Bath Ave., Ashland, 324-2785, 324-1155 ext. 252
Davis, Curt, 1119 E. Burnett, Louisville, 634-4959, JU 2-3511
Davis, Ralph C., 1326 S. 7th St., Ironton, Ohio, 532-8606, 532-8143
Deaton, Daniel E., Box 362, Matewan, W. Va.
DeMuth, Paul E., 609 Yancy Lane, Louisville, 895-2522, Clarksville, Ind., 945-5237
Dennedy, T. Robert, 5083 Orangelawn Drive, Cincinnati, Ohio, 922-8352, 922-2300
Dent, Donald, 1746 Dixdale, Louisville, 776-3573, 366-4551
Denton, Charles, 127 Hubbard Lane, Henderson, 826-4020, 826-9533
Denton, William J., 303 Bakers Court, Louisville, 366-7876, 584-9271
Deutseh, T. C., 304 Melish Ave., Cincinnati, Ohio, 961-4366, 751-8440
Devine, Edward J., 1413 Bluegrass Ave., Louisville, 368-3757
Dial, Charles R., 3300 Monel Ave., Huntington, W. Va.
Dial, Jack W., 3179 Sumner Ave., Huntington, W. Va.
Dierolf, Col. William H., Jr., ACOFS C&E, Hqs MAAG, APO 96263, San Francisco, Calif.
Dizney, Alan, 206 Fourth St., Corbin, 528-3313, 528-4606
Dorsej, James, 4062 Vinedale Ave., Cincinnati, Ohio, 471-8050
Dosek, Jerome J., 345 Navajo Trail, Huntington, W. Va.
Downey, Robert F., 327 26th St., Dunbar, W. Va.
Drake, Richard R., 72 Donnelly Drive, Fort Thomas, 441-4235
Draud, Jon E., 2441 Alex. Park, Southgate, 441-0223, 431-6157
Dryden, Wallace L., 163 E. Maxwell 3A, Lexington, 252-2733, 254-4017
Duff, Earl, 318 Laurel, Hazard, 436-2725, 436-2725
Duncan, Gilbert F., Jr., 3110 Commander Drive, Louisville, 458-5144
Durbin, Roy, 2911 Dale Ann Drive, Louisville, 452-1730, 587-1121 ext. 237
Duvall, Thomas Jay, Sr., 3002 Talisman Road, Louisville, 454-4817, 363-9566
Edwards, Ernest S., Jr., 823 South 39th St., Louisville, 774-5496, 584-8301
Edwards, Sonny, 508 Jefferson Ave., Milton, W. Va.
Egan, Joseph P., 3305 Utah No. 4, Louisville, 366-6661
Elliott, Carroll L., 307 College, Elizabethtown, 765-4007, 765-6118
Ellis, Johnny, Box 331, Prestonsburg, 6-2751, 6-3080
Elowitz, Carl, 1920 Spring Grove Ave., Lexington, 277-3994, 873-4901
Engle, Orville, 128 Oak St., Pineville, 337-2916
Ernst, Edward R., P. O. Box 75040, Cincinnati, Ohio, 689-7181
Fallon, Robert J., 142 Pear St., Hazard, 436-4528, 436-2151
Fandrich, William W., Route 4, Murray, 753-3193
Farina, Lawrence, 3802 E. Heatherbrae, Phoenix, Ariz., 955-2287, 273-2704
Faust, Jack, 2427 Concord Drive, Louisville, 634-4204, 584-6235
Fay, John C., 142B Woodford Drive, Lexington

- Fenimore, Clark E., 3943 Kennison Ave., Louisville, 896-4716, 282-1301
 Ferguson, Thomas Lyle, 407 Cabell Court, Huntington, W. Va.
 Fey, Ailen, 123 Garden Way, Fort Thomas, 441-6288, 562-7159
 Fields, Rickey, 820 Malabu Drive, No. 109, Lexington, 278-6665
 Fields, Ronald M., 1673 Country Club Lane, Henderson, 826-9859, 826-8381
 Fincham, David E., P. O. Box 98, Whitesville, W. Va.
 Fish, Leland G., 826 Oak Hill, Lexington, 255-7156
 Fletcher, John L., 5723-B Brown, Fort Knox, 4-2079, 4-2052
 Florence, Robert H., 308 N. 36th St., Paducah, 444-7489, 444-9691
 Flynn, Bobby, 428 McKenna Court, Lexington, 299-5902, 252-4464
 Forbes, John W., Jr., 4316 Dannywood Road, Louisville, 454-6025, 778-2731
 Fortney, Robert Lee, 2817 Breckinridge Lane, Louisville, 458-1079, 582-3511 ext. 472
 Foster, Berryman E., 927 Waverly Drive, Lexington, 255-7374
 Foster, J. W., 292 Winn Way Drive, Lexington, 277-8636, 255-6666
 Frankel, Louis S., 3723 Stanton Blvd., Louisville, 454-6519, 454-6519
 Franklin, Clifford, 10152 Zig Zag Road, Cincinnati, Ohio
 Franklin, James A., 2913 Hackworth St., Ashland, 325-3934, 324-1111 ext. 5535
 Frazer, Tom Roe, Route 1, Sturgis, 333-4412, 333-4672
 Frecka, Jerry C., 823 S. 5th St., Ironton, Ohio, 532-1509
 Freese, Oliver, 5518 Mapleridge, Cincinnati, Ohio, 561-5398, 351-7010
 Fruit, William, Route 1, Box 504, Henderson, 826-6294
 Fryrear, William P., 3012 Nadina Drive, Louisville, 459-5042, 454-7511 ext. 4846
 Fugate, E. Hugh, 329 Mockingbird Drive, Frankfort, 223-1340, 564-3990
 Fuller, Wilton H., 533 Hill-n-Dale, Lexington, 277-6654, 266-0115
 Gahnk, Walter M., 817 Windsor Court, Ashland, 325-3305, 325-1751
 Garrett, Richard A., Box 37, Simpsonville, 722-8858, 722-8995
 Carrey, Dale J., 4945 Determine Lane, Louisville, 447-5981, 585-5814
 George, Boyce D., 1129 Willow Ave., Apt. 2, Louisville, 458-8582
 Gettler, John F., 705 Providence Road, Lexington, 266-4801, 254-4017
 Gfell, George V., 3319 Coldstream, Lexington, 269-1218, 269-1218
 Gilbert, Gerald L. Tunnel Hill Road, Elizabethtown, 765-6704, Fort Knox 4-7719
 Cilligan, Jack, 1146 Tassie Lane, Cincinnati, Ohio, 522-2042, 522-2042
 Gorham, Harry C., 117 Hamilton Park, Lexington, 255-4165, 299-5214
 Gour, Bob, 218 South Lee, Bowling Green, 843-9582, 745-4293
 Grace, Charles K., Cypress Street, Pineville, 337-3331, 337-2348
 Graham, James, 2569 Bradley Drive, Ashland, 324-8169, 324-1155 ext. 376
 Gresham, R. P., 4929-B Indiana St., South Charleston, W. Va.
 Grieco, Joe, 2703 Shaffer Ave., Cincinnati, Ohio, 661-3346
 Griggs, John M., 3045 Dartmouth, Lexington, 278-2422, 233-0143
 Griffith, Lauren, 7408 Creek Blvd., Louisville, 239-9707, 459-5970
 Hadden, Newell P., Jr., 942 Wolf Run Road, Lexington
 Hagan, Joe, 3000 Sherbrooke Road, Louisville, 458-1325
 Hagerman, Bart, 1912 Ashland Ave., Ashland, 325-4227, 324-1111 ext. 5462
 Hagy, Harold J., 715 Grant St., Charleston, W. Va.
 Hall, Charles E., 425 Yale Drive, Lexington, 278-3995, 299-6212
 Hall, John R., 2610 Central Parkway, Ashland, 325-7306, 324-1111 ext. 5301
 Hall, Richard T., 2960 Rio Rita, Louisville, 458-6611, 585-5893
 Hamilton, Vernon K., 4213 Kirby Ave., Cincinnati, Ohio, 681-4284
 Hamilton, Walter F., 3404 Bryan Way, Louisville, 459-5432, 587-1121 ext. 265
 Hammock, Don L., 1512 Audubon Parkway, Louisville, 635-7111, 583-5604
 Hanes, Edw. C., 1508 Ridgecrest, Bowling Green, 843-3432, 745-2157
 Hansel, John T., 219 Long Ave., Whitesburg
 Harris, David L., 505 North 4th St., Bardstown, 348-5733, 348-3311
 Harris, Jerry, Route 1, Cedar Hill, Tenn., 696-2211, 384-4578
 Harris, Russell, 368 Boiling Spring Drive, Lexington, 254-6525
 Harrison, William H., HQ Co. Com Sp. USATCA, Fort Knox, 4-2395, 4-7911
 Harsh, Ronald B., 211 Oxford Place, Louisville, 893-2335
 Hatfield, Gene E., 103 Henderson Drive So. Fulton, 472-2825, Paducah 443-4508
 Hawkins, Will A., 407 Grace St., Springfield, Tenn., 384-8978, 384-5583
 Hedge, David William, 321 Mockingbird Drive, Jeffersonville, Ind., 283-3962, 283-3155
 Heinichen, Carl C., 1941 Schollenberger Ave., Cincinnati, Ohio, 931-7997, 931-7997
 Heindorf, F. Thomas, 6702 Plantation Way, Cincinnati, Ohio, 522-7834, 861-3220
 Heinze, Frank, 204 Maple Ave., Prestonsburg, 886-2436, 377-2431
 Heinze, John G., 39 Highland Ave., Prestonsburg, 886-2195, 886-2708
 Hendon, L. J., 228 South 15th St., Murray, 753-3658, 753-2825
 Hendrix, Jack, 415 South Mill, London, 864-2075, 864-2331
 Hicks, Lloyd, 6253 Spring Meyer, Cincinnati, Ohio, 662-5109, 771-6350 ext. 451
 Hill, Earl F., Route 6, Box 141, London, 864-2521, 864-2128
 Hofstetter, Joe, Box 1815, Williamson, W. Va.
 Holbrook, William M., 2421 Forest Ave., Ashland, 324-5850, 324-2144
 Holland, David W., Box 43, Water Valley, 355-2640, 472-3626
 Holman, Joseph B., 2101 St. Teresa Drive, Lexington, 266-7046, 252-6812 ext. 446
 Hollingsworth, Ralph, 206 Eighth Ave. E., Springfield, Tenn., 384-5467, 384-5700
 Holthouser, Terry W., 5322 Georgia Lane, Box 40219, Louisville, 969-9023, 239-3267
 Holton, Glenn, 121 Nelson Court, Barbourville, W. Va.
 Horsman, Bill, 2902 South 5th St., Louisville, 637-1201, 583-7621
 Houchin, Thomas, 8105 Arnoldtown Road, Louisville, 937-0254, 778-2731 ext. 358
 Howard, Robert E., Kettle Island, 337-3897, 337-5260
 Huber, Carl W., 125 North 37th St., Louisville, 674-3387
 Huber, Jerry, 404 Scott, Covington, 681-0897, 431-5723
 Hughes, Paul P., 520 Riverside Drive, Prestonsburg, 886-6771, 886-2170
 Hunter, Charles, Evarts
 Hunter, James E., 4219 Nance Drive, Louisville, 367-1361, 584-7848
 Hurley, Kenneth E., 3205 Christie Place, Owensboro, 683-0360, 683-5315
 Hurley, Robert, Box 244, Williamson, W. Va.
 Huston, Roderick J., 7492-C Pressler, Fort Knox, 4-4487, 4-6742
 Idol, Billy Joe, 124 Leafwood Road, Middlesboro, 248-2837
 Idol, Lloyd, Jr., 116 Leafwood Road, Middlesboro, 248-5761
 Ishmael, Stephen A., 2630 Longview Ave., Louisville, 896-4831
 Jacoby, Ben W., 127 Showalter Drive, Georgetown, 863-0508, 255-6812 ext. 10
 James, Gene, 1507 South 3rd St., Ironton, Ohio, 532-6976, 532-6224
 Jarrell, Frank W., Box 46, Ceredo, W. Va.
 Jenkins, Beryl, 2326 South 11th St., Ironton, Ohio, 532-5215
 Jenkins, Kean, Box 432, Elizabethtown
 Johns, Charles, Route 2, Fulton, 479-1819
 Johnson, Bernard M., 322 Blueberry Lane, Lexington
 Johnson, Harry A., Jr., 348 Friedland Ave., Paducah, 443-1767, 444-6211 ext. 402
 Johnson, Stan W., 3500 Ashlawn, Owensboro, 684-2157, 683-2401 ext. 236
 Jones, J. Carl, 1904 Goodwin Ave., Corbin, 528-2349, 528-2450
 Jones, John Howard, Route 5, Scottsville, 237-3959, 586-4547
 Jones, Paul, 314 Park Lane, Elizabethtown, 765-4502
 Junker, Edwin G., 1045 W. Seymour Ave., Cincinnati, Ohio, 821-4117
 Kallaher, James, 1117 Lincoln Ave., New Castle, Ind., 529-3189, 529-4790
 Karr, Don, 1503 Woodwind Court, Corbin, 528-6466
 Kasperski, Harry W., 3652-B Fincastle, Louisville, 451-1065, 582-5215
 Kathman, Bernard, 3060 Elmwood Drive, Fort Mitchell, 341-7369, 621-7541
 Kaufman, Alvin R., 8215 St. Anthony Church Road, Louisville, 366-0126, 587-0871
 Kelly, William G., 421-A "A" Street, Fort Knox, 4-7887, 4-1957
 Kemper, Russ, 5732 Landerdale Drive, Cincinnati, Ohio, 931-6222, 621-4380
 Kerr, Kenneth, 10806 Grafton Hall, Valley Station, 937-3008, 585-4000
 Kimble, Frank, Pox 2173, Williamson, W. Va.
 King, Allen V., 216 N. Main, Henderson, 7-69647, 7-63321
 Kirk, Charles F., Main Street, Box 334, Benham, 848-2039
 Kraesig, Charles, Milltown, Ind., 633-4842, 633-4273
 Kraft, H. Nellis, 2606 Delor Ave., Louisville, 637-8195, 583-2701
 Kratzenberg, Ralph, 2412 South 10th St., Ironton, Ohio, 532-5741
 Lally, James J., 1210 Ross Ave., Cincinnati, Ohio, 471-3644, 421-5700 ext. 626
 Lambert, Irvin, 5110 Rural Way, Louisville
 Landers, John F., 32 Charlemange, Clarksville, Tenn., 647-2656, 647-6322
 Lange, William E., Jr., 5515 Ken Lane, Louisville, 935-4710, 368-2581
 Law, William, 1072 Pamela Drive, Cincinnati, Ohio, 231-2479, 441-0068
 Lawson, Leland, 949 Deporres Ave., Lexington, 254-1009, 254-8074
 Layman, Richard Gilbert, 302 North 17th St., Murray, 753-2287, 762-3581
 Leahy, Pat, 2907 Cromarty Way, Louisville, 459-2066, JU 7-1121 ext. 472
 Ledbetter, Paul M., Adv. TM 21, Pleiku, APO San Francisco, Calif. 96318
 Lehkamp, Ken, 41 Dale Ave., Fort Thomas, 441-1475, 635-2191
 Lenahan, Thomas F., 4309 Retreat Road, Louisville, 964-4636, 582-8696
 Lewis, Lae V., 103-A 5th St., Cumberland, 589-4196
 Leonard, Dale C., 3412 Fountain Drive, Louisville, 451-2308, 634-1581
 Levy, Art, Route 2, Box 74-A, Williamson, W. Va.
 Liebert, Gilbert F., 223 Ridgeway, Louisville, 895-9167
 Lingo, Henry E., 424 W. Main St., Vine Grove, 877-2346, 877-5537

- Lloyd, Birt Leonard, 4423 Auburn Road, Huntington, W. Va.
 Logan, Eli, 421 Poplar St., Hazard, 436-5018, 436-2151
 Long, James E., P. O. Box 73, Baskett, VA 7-5000, JE 3-6421
 Lopp, Wilbur H., Jr., 1906 Hoke, Louisville, 267-5010, 584-1101
 Lotz, Robert W., 106 Buttercup Road, Louisville, 239-3976, ME 4-9491
 Lowe, Gene T., Route 6, Box 28, London, 864-5724, 864-2207
 Lowe, Stan, Box 337, Russellville, 726-6647, Nashville, Tenn. CY 7-6521
 Lusby, George, 615 Pueblo Trail, Georgetown, 863-1440, 863-1170
 McCarthy, William J., Dogwood Lane, Fulton
 McComas, Michael, 6183 Rosalind Road, Huntington, W. Va.
 McConachie, Bud, 5608 Halstead Ave., Louisville, 969-9676, 361-1256
 McCormick, Donald R., Route 2, Vicki Way, Frankfort, 223-5897, 564-4750
 McCowan, Connell, Route 1, Box 251, Corbin, 528-4932, 828-3568
 McDougal, Alf, 406 High St., Franklin, 586-4451 (Bus.)
 McFadden, Jimmie, 649 Northside Drive, Lexington, 299-1635, 277-3977
 McGehee, Gordon, 733 Forest Lane, Covington, 261-6880
 McGuire, Jack, 6421 Six Mile Lane, Louisville, 459-4031
 McKenzie, Robert L., 1809 Chestnut St., Kenova, W. Va.
 McKinney, Adelle F., 7829-B Estrada, Fort Knox, 4-5860, 4-3547
 McLane, Albert L., Route 1, Glendale, 862-4579, 862-3924
 McLemore, Jack T., 217 Merriman Road, Louisville, 893-6232, 584-1211
 McMillen, James Norris, Box 467, Ashland, 836-8054, 324-6191
 McNabb, Edgar, 16 Beechmont, Fort Mitchell, 331-3113, 331-1220
 McNamee, Jack, E., 3616 Muddy Creek, Cincinnati, Ohio, 922-5207
 McPeck, Talmage, Beth Ann Drive, Flatwoods, 836-4540, 836-5201
 Madon, Robert L., 314 Catalpa St., Box 546, Pineville, 337-2135, 337-2135
 Magruder, Earl, 4100 Pixley Way, Louisville, 969-7045
 Mahan, James R., No. 7 Columbine Court, Apt. 3, Cincinnati, Ohio, 522-4788
 Malone, James F., 200 Padgett, Corbin, 528-2424, 528-9019
 Marcum, Bruce, 1250 College Ave., Barbourville, W. Va.
 Markham, James R., 204 Floral Park, Lexington, 278-3953, 252-5373
 Martin, Thomas F., Route 3, Cynthiana, 234-1184, 234-1184
 Matarazzo, S. M., 1602 Keenland Drive, Murray, 753-8354, 762-3817
 Mattingly, Charles, 3813 Poplar Level, Louisville, 459-5793, 448-2761
 May, Charles E., P. O. Box 185, Prestonsburg, TU 6-3414
 May, E. B., Jr., Box 185, Prestonsburg, 886-3414, 886-8661
 Mayhew, William M., 906 Pawnee Drive, Route 3, Elizabethown, 765-2706, Fort Knox 4-7247
 Mays, Raymond K., 104 Samuels Ave., Barbourville, W. Va.
 Melmige, James, Jr., Box 2117, Williamson, W. Va.
 Mercke, Frank R., 417 Lotis Way, Louisville
 Mercker, George E., 803 Republic Bldg., Louisville, 451-8399, 582-1645
 Messerian, Nishan, 175 E. Third Ave., Williamson, W. Va.
 Metcalf, Ken, Munfordville, 524-9734, 524-4651
 Metzger, Donald, 9312 Cloverwood Lane, Fern Creek, 239-9813, 454-7511 ext. 4624
 Meyer, Bud, 5319 Lilibet Court, Cincinnati, Ohio
 Miller, E. D., Jr., 6262 Rosalind Road, Huntington, W. Va.
 Miller, Maurice Tony, 417 Elm St., South Charleston, W. Va.
 Millerhaus, Bill, 530 Woodlawn, Cincinnati, Ohio, 471-8467, 921-9722
 Minta, John H., 326 W. Carter, Clarksville, Ind., 283-8553, 582-3571 ext. 313
 Mitchell, Emmett, 511 McCubbin, Lexington, 254-3871 (Bus.)
 Mitchell, Vyron W., Dogwood Lane, Fulton
 Modrell, Garry W., 1124 Kees Road No. 9, Lexington, 254-8489, 252-8913
 Moody, William R., 2032 Oleander Drive, Lexington, 277-9622, 255-5612
 Mooneyhan, James H., 810 Henry St., Franklin, 586-4989, 586-4451
 Moore, James Patrick, Jr., 1734 Gettysburg Road, Lexington, 278-3960, 233-2000
 Mordica, William A., 800 Edgewood Ave., Ashland, 324-7741, 324-7741
 Morgan, Jimmie Lee, 1934 Virginia Ave. W., Huntington, W. Va.
 Morgan, Richard, Route 6, Box 64, London, 864-6511, 864-6114
 Morris, Gene L., 302 Wilson Court, Huntington, W. Va.
 Morris, Jack, 1809 Linden Road, Dyersburg, Tenn., 285-7329, 285-4103
 Morrison, Clifton D., 1209 Balls Gap Road, Milton, W. Va.
 Morrissey, Rockne, 2012 Trentwood Circle, Dayton, Ohio, 885-2282, 271-0343
 Morse, Richard K., 163 N. Deepwood Drive, Radcliff, 351-3748, Fort Knox, 624-4454
 Moser, Tommy, 707 Miller, Stanford, 365-2596, 365-2235
 Moses, Larry, P. O. Box 2276, Williamson, W. Va.
 Moss, Howard A., Box 1042, Paducah, 898-3168, 442-4474
 Mueller, Dick, 3479 Lansdowne Drive, Lexington, 277-5924, 254-1360
 Mullins, B. E., Box 4, Paintsville, 789-4610, 789-3580
 Mullins, Robert M., 1712 Claremoor Drive, Anchorage, 425-9560
 Muntan, Peter J., 125 Woodmore Ave., Louisville, 368-8236, 637-7621 ext. 288
 Murray, Thomas, 25 Ashton, Fort Mitchell, 331-1891, 421-5043
 Nassida, Frank R., 108 Buckwood Drive, Richmond, 623-9209, 623-9858
 Neal, Gene, 3648 SR 132, Batavia, Ohio, 753-5908, 242-5151
 Newman, Bill, 2535 Ritchie, Portsmouth, Ohio
 Niday, Paul D., 4094 Fifth Street Road, Huntington, W. Va.
 Noland, Douglas, 305 Herndon, Stanford, 365-2609, 365-2619
 Nord, Bertrand J., 4205 Naomi Drive, Louisville, 969-3369, JU 7-7571
 Nord, Ed, 7005 Green Manor Drive, Louisville, 239-9150, 895-3401 ext. 202
 Nord, Gilbert T., 6315 Krause Ave., Louisville, 447-3133, 587-7571
 Norwood, Thomas R., 811 Henry St., Franklin, 586-3614, 586-3541
 Odil, William Randall, 915 Plum Spring Road, Bowling Green, 843-3633, 842-9471
 Oldham, Ben Richard, 516 Estill Court, Georgetown, 863-1208, 255-0115
 Omer, Billy W., 250 Reed, Madisonville, 821-2833
 Omer, Harold G., 150 N. Crestmoor, Madison, 896-4170, 774-6509
 O'Nan, Norman, Route 4, Henderson, 7-3968, 6-9578
 O'Neal, Bud, 3628 Kelly Way, Louisville, 458-7940
 Orem, Dale Linton, 409 Chippewa Drive, Jeffersonville, Ind., 283-8225, 287-1161
 Osborne, Ted G., Box 806, Lexington, 266-6152
 Osting, James E., II, 502 Meadowbrook Court, Louisville, 368-9631, 584-3211 ext. 647
 Owens, Bruce E., Box 917, Harlan, 573-1686, 573-1661
 Owens, Charles C., Jr., 2656 Chesterfield, Huntington, W. Va.
 Pace, Donald W., 2023 Deauville, Lexington, 252-6535, 252-8743
 Palmer, Carl A., 1015 1/2 S. 6th St., Ironton, Ohio, 532-0291
 Pardue, Israel L., 1005 S. 28th St., Louisville, 772-2488, 774-6431
 Parker, Bob L., 8602 Honor Ave., Louisville, 969-9090, 587-1121 ext. 595
 Parsley, Clyde E., Box 818, Route 2, Providence, 667-2524
 Pate, Lloyd W., 608 Ronnie Road, Madison, Tenn., 895-3522, 895-5472
 Patterson, Temme J., 2216 Ridgecrest Drive, Evansville, Ind., 476-9026, 425-1545
 Paulk, John R., 1711 College Farm Road, Murray, 753-3078, 924-5602
 Pawley, James L., 6000 Jessamine Lane, Louisville, 935-2126, 584-5201 ext. 354
 Paxton, Gary R., 2111 Lansill Drive, Apt. L-109, Lexington, 277-9024, 277-9024
 Peeno, Harry R., 124 Morris Road, Lookout Heights, Covington, 331-1981
 Pegausch, William E., 618 Brook Haven, Mayfield, 247-5932, 247-2267
 Pelham, Pete, 214 Oak, Dyersburg, Tenn., 285-6649, 285-2323
 Perry, Tom, Route 2, Box 494, Mt. Sterling, 498-3827, 498-3800
 Phipps, James M., Heidrick, 546-3367
 Pietrowski, Paul, 108 Bishop St., Corbin, 528-6391, 528-1630
 Pinson, Eugene, 3208 Hackworth St., Ashland, 324-6548, 324-3101
 Plate, Arthur C., 6213 Kenwood Hills Drive, Cincinnati, Ohio, 561-4105, 891-9091
 Porco, Kenneth J., 3924 Layside Drive, Louisville, 459-3455, 458-3281
 Potter, Nat Douglass, 521 Brentmoor Drive, Bowling Green, 842-7894, 843-4405
 Prather, Wilbur E., 1512 Berry Blvd., Louisville, 363-2908, 363-2908
 Priode, Charles, Box 293, Route 3, South Point, Ohio, 377-2289
 Rapp, Lowell D., 1416 South 4th St., Ironton, Ohio, 532-9575
 Rapp, William, 1836 Woodland Drive, Ironton, Ohio, 532-1983, 532-7242
 Raque, Ronald, 5300 Ronwood, Louisville, 964-2350
 Rawls, L. Townes, 1832 Darien Drive, Lexington, 278-4966, 252-8913
 Ray, Bob, 407 Leyton Ave., Louisville, 425-7654, 425-7654
 Ray, Collis Randle, 809 North 32nd St., Paducah, 442-2146
 Ray, Shirley G., 4902 Sturbridge Place, Owensboro, 684-8963, 684-0104
 Read, Frederick K., 202 Levassor, Covington, 431-5197, 731-2020
 Reddington, Jim, 3824 Glenside Place, Louisville, 452-9689
 Reece, Fred, 149 Elm St., Versailles, 873-3623, Frankfort, 564-4440
 Reece, Jerry T., 1319 Nancy Hanks Road No. 5, Lexington, 254-7876, 564-3070
 Reed, Gordon, 22 Riverside Parkway, Fort Thomas, 441-4946, Cincinnati, Ohio 631-5750
 Rees, John D., 419 Huguelet Drive, Lexington, 252-9018
 Reeves, Bob, 5229 Leona Drive, Cincinnati, Ohio, 992-2646, 481-1377
 Renfro, John E., 445 Florence, Box 298, Williamsburg, 549-3692, 549-0366
 Rhodes, Cecil, Box 291, Barbourville, 546-4777
 Richardson, Dennis C., Jr., 1122 Savannah Drive, New Albany, Ind., 945-9457, 944-2361
 Richardson, William H., 205 Fields Cliff Drive, Whitesburg, 633-7217, 633-2339
 Riggs, Jason M., Jr., Box 417, Man, W. Va.
 Riggs, C. Dennis, 3131 Sudbury, Louisville, 897-1767 (Bus.)
 Riggs, William T., Route 1, Morganfield, 389-2210, 389-2210

Ring, Bill, 481 Rookwood Parkway, Lexington
 Roberts, John G., 115 Jones St., Bardstown, 348-8909, 388-9281
 Robinson, Don L., 2012 Poplar St., Kenova, W. Va.
 Robinson, J. Ward, 3802 Nanz Ave., Louisville, 895-0631, 895-0631
 Rodgers, H. Tom, 128 Waddell, Madisonville, 821-7312, 338-3800
 Roe, Doyle, Jr., Isom, 633-2058, 633-2339
 Rolph, Harold J., 915 South 7th St., Ironton, Ohio, 532-4036, 532-3231
 Roof, Jerry C., 447 University, Louisville, 896-9057, 896-9057
 Rudolph, Fred, Jr., 5600 Jeanine Drive, Louisville, 969-3013, 635-7441
 Russell, Gary E., 2112 Gregory Drive, Henderson, 827-1491
 Russell, Joe A., Box 213, Russellville, 726-6983, 726-6983
 Russman, Godfrey F., Jr., 1041 Goss Ave., Louisville, 969-2175, 635-7426
 Sagers, Robert M., 494 Morrvue Drive, Cincinnati, Ohio, 922-8230, 251-4510
 St. Clair, James W., 1500 Fifth Ave., Huntington, W. Va.
 Sallee, Alan L., 3236 N. Talbot Road, Erlanger, 341-3556, Cincinnati, Ohio PL 1-2808
 Sammons, Terry Lynn, 4308 Burnt Cedar Lane, Louisville, 964-0852, 587-1121 ext. 252
 Sanders, Mel, 4300 Kimberly Court, Paducah, 442-3650, 564-4081
 Sapp, Edward, 2306 Dell Brooke, Louisville, 458-8989, 775-6431 ext. 84
 Sauer, George E., Jr., 3015 Curran Road, Louisville, 454-4310, 774-2353
 Saylor, Carlee, Route 3, Murray, 753-7979, 924-5602
 Schad, Jim, 10717 Chelmsford Road, Forest Park, Ohio, 825-3343, 825-8844
 Schiering, Jack, 6948 Terrylynn Lane, Cincinnati, Ohio, 681-2272, 241-3663
 Schlich, Paul E., 3315 Dean Drive, Louisville, 458-6765, 896-0211
 Schmidt, Henry, 410 Kilmory Ave., Louisville, EM 8-5534
 Schmitt, K. F., 710 E. Walnut, Louisville, 772-0131, 584-8269
 Schmitt, Paul E., 3864 Darlene Drive, Louisville, 778-5355, 583-2866
 Schrecker, Dennis R., 4312 Lowe Road, Louisville, 451-1435, 451-1435
 Schuble, Charles E., 2352 Ashwood, Louisville, 459-1774, 636-1431
 Schwetschenau, Paul, 7013 Clovernoll Drive, Cincinnati, Ohio, 931-3548, 243-3882
 Sconce, John, 162 E. Main, Lynch, 848-2250
 Scott, W. L., 1816 McDonald Road, Lexington, 278-2844, 254-1313
 Seale, Frank E., 1001 Tates Creek Road, Lexington, 266-5545
 Seale, William E., Tates Creek, Lexington, 266-5695, 233-5000 ext. 5725
 Sears, Keith, P. O. Box 14, Fort Gay, W. Va.
 Seavers, Joe, 2517 Ann St., Ludlow, 340213, 291-8925
 Sexton, Steven C., P. O. Box 354, Whitesburg, 633-7114, 832-4220
 Shanks, Thomas E., 3113 Vogue Ave., Louisville, 454-4203, 582-5514
 Shaw, Earl, 121 Hagan Court, Lancaster 792-2370, 548-2208
 Shaw, John H., Terrace Drive, Mayfield, 247-1907
 Shewmaker, Wayne, 206 W. Meadow Drive, Clarksville, Tenn., 647-7351, 645-5931
 Shwalter, John, 116 Military, Georgetown, 863-1892

Minutes of Meeting K.H.S.A.A. Gymnastics Committee Lexington, May 27, 1967

The meeting started at 10:00 A.M. Present at the meeting were: Barney Grove, George Jefferson, Tom Mahanes, Bonnie Rowe, Bob Wason, J. B. Mansfield, Ted Sanford, and Bernard Johnson.

Each person was asked to make a brief report on Gymnastics in his area. All reports indicated that the 1967 State Gymnastics Meet was a success and that the state meet stimulated Gymnastics in many areas of the state. Bob Wason was commended for his excellent management of the 1967 state meet.

Tom Mahanes reported that the Fayette County school system will probably appoint a Gymnastics coach for each junior and senior high school in Fayette County next year.

Bonnie Rowe indicated that some schools in the Jefferson County area were paying extra money for coaches in Gymnastics.

Bob Wason pointed out that there were a few problems in regards to entries, eligibility, and rules in the 1967 state meet. It was the feeling that the lack of experience of the coaches was the main cause of the problems. Bob suggested that a committee of high school coaches be appointed to establish a set of rules for next year. However, after some discussion it was

felt that for the coming year a sub-committee (Bob Wason, Bonnie Rowe, and Bernard Johnson) should obtain rules from a few neighboring states and establish the Gymnastics rules for 1968. A meeting of the sub-committee was set for 10:00 A.M., June 17 at the K.H.S.A.A. building.

A state Gymnastics clinic was discussed. It was the feeling of the committee that there should be a state clinic some time in late September. It was suggested that the clinic be for coaches, with the possibility of having a few high school students to be used in demonstrating teaching and spotting techniques.

The committee set a tentative date of March 30, 1968, for the next State Gymnastics Meet. Tom Mahanes suggested we try to have the meet in Lexington at either Lafayette High School or Tates Creek High School.

The meeting adjourned at 12:00 noon.

Bernard Johnson, Chairman

Hot Weather Hints

(Continued from Page Four)

empty stomach, can be irritating and may be poorly absorbed. Adding one teaspoon of salt to six quarts of flavored water used for drinking during hot-weather workouts offers another approach.

Even after acclimation, it is advisable to alternate periods of strenuous exercise with periods of rest during hot weather. Also, it is important for the coach to observe his athletes carefully for signs of lethargy, inattention, stupor, awkwardness, or unusual fatigue. Symptoms of water and salt depletion may include sluggishness, headache, nausea, hallucinations, and/or weak and rapid pulse. If heat illness is suspected, prompt attention to recommended emergency procedures outlined at the end of this statement may have vital importance.

The following suggestions are offered to help coaches prevent heat exhaustion and heat stroke during hot-weather athletic activity.

- 1) Require a careful medical history and checkup prior to the beginning of practice.
- 2) Schedule workouts during cooler morning and early evening hours in hot weather.
- 3) Acclimate athletes to hot-weather activity by carefully graduated practice schedules.
- 4) Provide rest periods of 15 to 30 minutes during workouts of an hour or more in hot weather.
- 5) Supply clothing that is white to reflect heat, brief, loose, and comfortable to permit heat escape, and permeable to moisture to allow heat loss via sweat evaporation.
- 6) Furnish extra salt and water in recommended amounts during hot weather.
- 7) Watch athletes carefully for signs of trouble, particularly interior linement and the determined athlete who may not report discomfort.
- 8) Remember that temperature and humidity, not the sun, are the crucial factors. Measuring the relative humidity, by use of a sling psychrometer on the field, is advantageous in this regard. Heat exhaustion and heat stroke can occur in the shade.
- 9) Know what to do in case of such an emergency, including immediate first aid practices and pre-arranged procedures for obtaining medical care.
- 10) Outlaw the hazardous warm weather use of rubberized apparel or other dehydration devices by players.

Some teams encounter hot weather during the season either through inter-sectional travel or following an unseasonably cool period. By this time, the athletes should be physically fit; nevertheless they will not be environmentally fit. Coaches who face this situation

are advised to schedule practices preceding the game at the warmest time of the day, to diligently subscribe to the other recommendations above, and to substitute during the game more frequently than normal. The result will benefit the team's performance as well as the health of the athletes.

Heat Stroke: Collapse—with dry warm skin—indicates sweating mechanism failure and rising body temperature. THIS IS AN EMERGENCY; DELAY COULD BE FATAL. Immediately cool athlete by the most expedient means (immersion in cool water is best method). Obtain medical care at once.

Heat Exhaustion: Weakness—with profuse sweating—indicates state of shock due to depletion of salt and water. Place in shade with head level or lower than body. Give sips of dilute salt water if conscious. Obtain medical care at once.

1 First Aid Chart for Athletic Injuries, American Medical Association, 1965:

2 R. J. Murphy, J. D., and W.F. Ashe, M.D., Prevention of Heat Illness in Football Players, JAMA, 194:650-654 (Nov. 8) 1965.

Warning Against "Spearing"

(Continued from Inside Front Cover)

ing' makes it self-evident that the teaching of it must not be tolerated. There are a great variety of safer methods which are as effective as spearing and infinitely safer."

Elimination of spearing "would certainly cut down the number of fatalities in football," said L. W. Combs, M.D., director of the student health center, Purdue University, and a leader in the Athletic Medicine Section of the American College Health Association. "It has been disappointing for me as a team physician at a university to realize that some high school coaches are teaching spearing as being a sound football practice," Dr. Combs said. "At the college level, we are very much aware that this technique makes the player much more vulnerable to injuries of the head and neck. The headgear has been highly developed by equipment manufacturers with the advice of physicians, trainers, and others as a protective gear. It is entirely unfitting, however, that some coaches persist in teaching its use as an offensive and defensive weapon."

"The primary problem is the present coaching techniques of 'butt' tackling or blocking. It is impossible for the rules committee to legislate 'coaching techniques,'" said O. B. Murphy, M.D., of Lexington, Ky., University of Kentucky team physician and representative of the AMA committee of the N.C.A.A. Rules Committee. "In any case," he said, "the fact remains that since the advent of the hard helmet and face piece, coaches have felt that the head and face are adequately protected. This, however, affords no protection at all for the neck which is subject to injury through this repeated 'butting' technique."

Said Murray Warmath, football coach at the University of Minnesota: "Spearing will never disappear from the game until we quit coaching it and until we absolutely disallow its use on the part of our men. "It isn't the first man who makes the tackle," Warmath said. "It's that second tackler. He puts his head down, closes his eyes, and piles into the man who's down with one intent, and that's to maim and cripple."

Since 1960, most of the football deaths resulting directly from football participation have been caused by head and neck injuries, said Carl Blyth, Ph.D., of Chapel Hill, N. C., chairman of the N.C.A.A. committee on football safety and president of the American College of Sports Medicine. "The practice of spearing is condemned by all responsible persons truly inter-

ested in the game of football and the welfare of its participants," he said.

The AMA committee has waged a continuing campaign for prevention of injuries to the head and neck since it sponsored a "National Conference on Head Protection for Athletes" in Chicago in 1962. The conference recommended that spearing be outlawed, but the practice persisted.

"Perhaps the only answer is the creation of public awareness of this problem to the point that a player who uses spearing will be branded as guilty of unsportsmanlike conduct," said a spokesman for the committee. "Anyone who would deliberately set out to injure his opponent, by spearing, while at the same time endangering his own life must be lacking in moral values and intelligence," he said.

The AMA Committee on the Medical Aspects of Sports called on all team physicians to discourage spearing, urged coaches to teach against the tactic, and warned players of the dangers of the practice. Concerted action to rid the game of spearing can make football a better game for all concerned, the committee said.

—AMA News Release

Minutes of Board Meeting

(Continued from Page Two)

President Rawlings thanked the members of the Board for electing him to the presidency, stating that it was his hope that the progress of the Association would continue, and pledging his efforts toward this goal.

The Commissioner made a report to the Board on Association receipts and disbursements during the year 1966-67. Copies of the audit, recently prepared by Huet L. Johnson of Louisville, Certified Public Accountant, had been mailed to the members of the Board. Oran C. Teater moved, seconded by Don Davis, that the financial report presented by the Commissioner be accepted. The motion was carried unanimously.

President Rawlings and Director Don Davis gave reports on the recent National Federation Annual Meeting.

It was the decision of the Board members that the fall meeting of the Board be held in Lexington on September 30.

The Commissioner stated that the Board in its June meeting had asked him to get certain information concerning Blue Cross and Blue Shield rates and present staff insurance coverage, and to make a report on this at the summer meeting. This report was now made. Preston Holland moved, seconded by Foster J. Sanders, that the Board of Control underwrite as a fringe benefit for each employee of the K.H.S.A.A. Blue Cross and Blue Shield coverage, this being an item in the annual K.H.S.A.A. budget. The motion was carried unanimously.

The Commissioner stated that the Board in its June meeting had directed him to set aside an amount in a K.H.S.A.A. Retirement Fund, for the improvement of the present retirement program, the amount to be determined annually. He recommended that the amount for the current fiscal year be \$10,000.00. Foster J. Sanders moved, seconded by Ralph C. Dorsey, that the recommendation of the Commissioner be accepted. The motion was carried unanimously.

Alvin Almond moved, seconded by Ralph C. Dorsey, that all bills of the Association for the period beginning June 1, 1967, and ending June 30, 1967, be allowed. The motion was carried unanimously.

There being no further business, the meeting adjourned.

The KINGDEN Company

LIFE DEPARTMENT

Scholastic, Athletic,
Life, Accident - Health,
Special Risks.

121-123 Lafayette Ave.
P. O. Box 7100
Lexington, Kentucky 40502
Telephone 254-4095

September 10, 1967

TO: PRINCIPALS AND COACHES

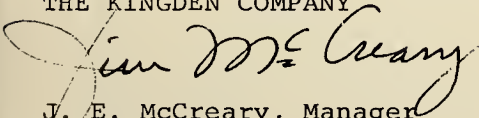
Everyone involved is concerned about the rising cost of football claims and insurance coverage. Part of the increase is due to economic factors which affect everyone. However, there are several things which can be done to control the problem. Here are some suggestions which have proven beneficial:

1. Require each prospective player to have a thorough check-up before he starts practice. Consider any history which might indicate any future trouble.
2. Plan a conditioning program which will get the player ready for contact work. In this connection conditioning of the knees is very important.
3. Set up a system of requiring your players to have your authorization to see the team physician or family physician so that you can have control over this feature.
4. Require a clearance from the physician before permitting an injured player to return to contact work. (We see several claims each year where a player turns a minor injury into a major one by returning too soon.)

These are merely suggestions, but we feel sure they will help solve this problem for our Kentucky Schools. Another suggestion is that you consider the Cooperative Football Insurance Plan which we administer for a sizeable group of Kentucky High Schools. This has worked well and we will be happy to explain it to you.

Sincerely,

THE KINGDEN COMPANY


J. E. McCreary, Manager
Life Department

JEM/bc

HUNT'S ATHLETIC GOODS CO., INC.

Mayfield, Kentucky

Ch 7-1941

Ch 7-1942

Whether your order is for a few special items, or for outfitting a complete team, we give undivided and personal attention to every order that comes to our store. We have the most complete stock for team equipment in the south.

We are distributors for the VERY BEST MANUFACTURERS of athletic goods such as:

SECO

MacGREGOR

WILSON

KING-O'SHEA

GYM MASTER

VOIT

FAIR PLAY

HILLERICH & BRADSBY

SPANJIAN

CONVERSE

E. R. MOORE CO.

BIKE

CRAMER

WIGWAM

NELSON

JOHNSON & JOHNSON

SOUTHERN

LYON METAL

We try to make our SERVICE match the quality of the items we sell, and are now in position to guarantee overnight delivery to any place in the State of Kentucky. Furthermore, each and every item we sell is fully guaranteed.

If you would like to see our salesman for football or basketball equipment, call Wade Burlison in Louisville at 459-6366.

Roy Boyd, Jim Mitchell, Billy Farmer and C. A. Byrn are always glad to help you in Mayfield. Call collect, or come by and let them help you with your needs.

HUNT'S ATHLETIC GOODS, Inc.

CH 7-1941 — PHONES — CH 7-1942

MAYFIELD, KENTUCKY

WE SHIP THE DAY YOU BUY