

2-1-1970

# The Kentucky High School Athlete, February 1970

Kentucky High School Athletic Association

Follow this and additional works at: <http://encompass.eku.edu/athlete>

---

## Recommended Citation

Kentucky High School Athletic Association, "The Kentucky High School Athlete, February 1970" (1970). *The Athlete*. Book 156.  
<http://encompass.eku.edu/athlete/156>

This Article is brought to you for free and open access by the Kentucky High School Athletic Association at Encompass. It has been accepted for inclusion in The Athlete by an authorized administrator of Encompass. For more information, please contact [Linda.Sizemore@eku.edu](mailto:Linda.Sizemore@eku.edu).

# THE KENTUCKY



# High School Athlete

CLASS A STATE CHAMPION MT. STERLING



(Left to Right) Front Row: Frank Greene, Roy Garrett, Gary Gilmore, Doug Cunningham, Robert Brooks, Charley Owens, Eddie Miller, Jim Malone, Steve McGuire, Bob Unger, Perry Collier. Second Row: Jerry Spencer, George Calico, Mike Gatewood, Rusty Duff, Dennis Bonfield, Gary Orme, Dan Lane, Steve Hatfield, Mac McCormick, Jack Carrington, Tom Orme, Tommy Breeze, Arthur Clayton, Gary Blake. Third Row: Tony Fritz, Larry Garrett, Jerry Hamilton, Richard Jones, Robert Thompson, Jeff Garrison, C. D. Highley, Mike Lavoie, Tom Edwards, Terry Barnard, Robert Garrison, Gary Ingram, Rodney Shultz. Fourth Row: Mgr. Alfred Blevins, Mgr. Charlie Lindsay, Mgr. David Lane.

Mt. Sterling 6-Tompkinsville 16  
Mt. Sterling 24-Georgetown 0  
Mt. Sterling 28-M. I. 0  
Mt. Sterling 30-Jessamine County 0  
Mt. Sterling 28-Madison 12

Mt. Sterling 60-Paris 14  
Mt. Sterling 8-Henry Clay 0  
Mt. Sterling 14-Danville 14  
Mt. Sterling 74-Bath County 8  
Mt. Sterling 69-Nicholas County 8

#### PLAYOFFS

Mt. Sterling 24-Dayton 0  
Mt. Sterling 16-Lynch 14  
Mt. Sterling 20-Bardstow 14

Official Organ of the  
**KENTUCKY HIGH SCHOOL ATHLETIC ASSOCIATION**

FEBRUARY 1970

## Letter From The Commissioner

To The District Tournament Manager:

Will you please refer to your K.H.S.A.A booklet which gives rules and regulations governing basketball tournaments. You should familiarize yourself with these rules, found on pages 31-39. Your special attention is called to the second paragraph of Tournament Rule VI-A-3, relative to the enrollment of your district coaches in the Kentucky High School Coaches Association.

The forms for your various reports are self-explanatory. The report of games should be mailed to the manager of the regional tournament not later than Monday, March 9. Send your financial report, your checked eligibility lists, and the second copy of the report of games to the Commissioner as soon after the tournament as possible. For your convenience, the following check list is given.

1. Invite member schools to your tournament AT ONCE, reminding each school to send each member school in the district a COMPLETE preliminary list of players on or before February 1, and to send you THREE copies of a final list one week prior to the district tournament. See Rule VIII.

2. Announce the time of drawings in your letter. See Rule IX.

3. At your meeting, conduct the drawings and select the officials. The state plan for division of tournament receipts is recommended. If any other plan is used, a majority vote of the participating schools must be obtained.

4. Your attention is called especially to the last two paragraphs of Tournament Rule V-A, and to Tournament Rule V-C.

5. The following procedure has been established by the Board of Control in the selection of tournament officials under authority given in Tournament Rule V-A: (a) Each school represented at the meeting may submit the names of one or more officials. There shall be a minimum of eight names on the list of officials to be voted on. NO NAME SHALL BE MARKED OFF THE LIST. (b) Each school representative shall rank eight officials in the order of his preference, the first choice being assigned eight points, the second seven points, etc. (c) The tournament manager shall communicate at once with the highest ranking official or officials in the order of their rank. If the official who is selected can not be reached within one hour of the time of his selection, or if he is not available, the tournament manager shall attempt to employ the next official or officials on the list in the order of their selection. If the tournament manager attempts to contact the official by telephone and there is no answer, the manager should check with the operator for a possible change in the official's number. (d) If two officials are tied on points, the highest ranking official shall be determined by flipping a coin. (e) If none of the officials on the list is available, the tournament manager shall have the sole responsibility of securing an official or officials for the tournament.

6. Tournament Rule XV says: "The Board of Control is authorized to select, standardize, and purchase trophies for all district and regional tournaments and the cost of these trophies shall be borne by the respective districts and regions." The Board has contracted with the Hunt's Athletic Goods Company, Mayfield, Kentucky, to supply all of the official K.H.S.A.A. district first place and second place basketball trophies for the 1970 tournaments, each trophy complete with the Association seal and engraving. Your trophies will be shipped to you prior to March 1.

7. It is the responsibility of the tournament manager to secure adequate police protection.

8. THE BOARD OF CONTROL HAS RULED THAT NOT MORE THAN TWELVE PLAYERS MAY BE IN UNIFORM FOR ANY ONE TOURNAMENT GAME, AND THAT OTHER SQUAD MEMBERS SHALL NOT BE ALLOWED TO PARTICIPATE IN WARM-UP EXERCISES, THIS BEING IMPLIED IN TOURNAMENT RULE XI.

9. Please ask your officials to designate the goals prior to warm-up time for each game.

10. You will receive three copies of a final eligibility list from each school. Have one of these checked by the coach of

each competing team, before his team plays, for the twelve players he will use in each game. Use only one list for checking players on each team since the other two copies may be needed by the regional and state tournament managers. Send the Commissioner all of these checked copies with your other reports. Send the two unchecked copies of eligibility lists of the winner and runner-up to the manager of your regional tournament, along with one copy of your report of games, not later than March 9.

11. It has been ruled that the 2:00 o'clock mentioned in Tournament Rule IV-B may be considered Eastern Standard time or 1:00 P.M. CENTRAL STANDARD TIME. This information concerning the starting time of the regional meeting should be given to your winner and runner-up.

12. Send Secretary Ohr of the Kentucky Coaches Association the list of district coaches to be enrolled in his organization and remittance for these, and send the Commissioner the various reports mentioned above as soon as possible.

13. Tournament Rule VI-A-3 provides that the district representative to the annual meeting may be allowed for expenses an amount not to exceed \$75.00. Since this is a maximum and not necessarily a fixed amount, the delegate should be asked to submit an estimate of the cost of his lodging, transportation, and meals because of his representing the district at the annual meeting.

Sincerely yours,  
Ted Sanford, Commissioner  
K.H.S.A.A.

Attention!!!

The Board of Control has the authority to set the fees for district tournament officials. The following regulations for 1970 have been set by the Board: "The officials shall receive a fee of \$25.00 per game and a transportation allowance of 10 cents per mile for all necessary travel. In the event it is necessary for the official to remain overnight at the tournament site, he shall be paid an additional \$20.00 per day for lodging and meals."

### Mr. Kelley's 1970 Poem

K.H.S.A.A. poet laureate Elmer Kelley of Madisonville, who has written poems for the last four state basketball tournaments, presents his poem about the forthcoming tournament.

#### Greatest Show On Earth (Kentucky Version)

Hark to the sound of fury mounting,  
Blink to the light on polished board,  
Quicken to the step of masses surging,  
Ride with the tide of the cheering horde.  
  
Thrill to the tightness of the tension,  
Lean to the underdog's pulsing side,  
Leap when the throng stands wildly screaming,  
Groan when the arching shot is wide.  
  
Sixteen came with high hopes holding,  
Two can survive to the final fight.  
  
Four times eight and history claims it,  
One is left to proclaim its might.  
  
Bedlam? Yes, you'd have to call it,  
Tears and cheers with moans and mirth.  
Add 'em up, you've got the answer.  
It's the Greatest Show On Earth!

# The Kentucky High School Athlete

Official Organ of the  
Kentucky High School Athletic Association

VOL. XXXII—NO. 7

FEBRUARY, 1970

\$1.00 Per Year

## Basketball Questions

**EDITOR'S NOTE:** These interpretations of the rules of the National Basketball Committee of the United States and Canada do not set aside nor modify any rule. The rulings are made by the National Federation of State High School Athletic Associations in response to situations presented.

21. **Play:** The official places the ball at the disposal of A1 who has been awarded a free throw. B1, from a position in the third free throw lane space, comments in a voice loud enough for A1 to hear, "Okay big shot, let's see you make this free throw." B1 may or may not be looking directly at A1.

**Ruling:** This is disconcerting. It is a violation. Disconcerting acts can consist of action which, mentally or physically, upsets the player who will attempt the free throw. A disconcerting act can take place while the free thrower is preparing to make the try.

22. **Play:** A1, in the front court, passes the ball parallel and close to the division line. The official is standing in the back court or on the division line. The pass from A1 strikes the official and rebounds into the front court where A2 secures control.

**Ruling:** Violation. A1 has returned the ball to the back court. The violation occurs when A2 is first to touch the ball after A1 caused the ball to go into the back court from the front court.

23. **Play:** Team A is responsible for action. A1, in control of the ball, has been warned and is not closely guarded. He has 5 seconds to advance the ball out of the mid-court into the scoring area. At the count of 5 he is holding the ball, straddling the mid-court line.

**Ruling:** Violation. When A1 is straddling the mid-court line or touching the mid-court line with his foot or any other part of his body while holding the ball, he has not moved out of the mid-court area. The mid-court line and the administration relative to it is comparable to that of the division line. The mid-court line is considered part of the mid-court area on the same basis that the division line is considered part of the back court area.

24. **Play:** Must the timer start the clock when the official signals even though the timer knows the official starting the clock is in error. For example, the official indicates two free throws and then signals that the clock start when the first free throw is missed permitting the ball to go into play.

**Ruling:** Bench officials, including the timer, work under the supervision of the floor officials and are obligated to follow the directions of the floor officials. The rules provide that if the official gives no direction, such as indication when the clock should start in situations in which it should start by rule, the timer may, in such situations, start the clock without the official signalling. However, the rules do not permit the timer to ignore the direction of the floor official in case he does signal.

25. **Play:** Following a try for a field goal, while the ball is in flight but before it reaches the basket cylinder, B1 grasps: (a) the ring; or (b) the net.

**Ruling:** In both (a) and (b) a technical foul is charged to B1 for grasping the basket. The net is part of the basket. The indication of the foul, however, does not cause the ball to become dead until there is evidence that the basket attempt is either successful or unsuccessful. Immediately after it is determined whether the attempt will be successful, the ball will be-

come dead. If the attempt has been successful, a field goal is scored. Any player of team A may attempt the free throw for the technical foul following which team A will be awarded the ball out of bounds for a throw-in on either side opposite the center circle.

26. **Play:** During a dribble, A1 bats the ball over the head of his opponent, B1, in a high arc, runs around B1 to where the ball comes to the floor behind B1, and continues to dribble. A1 comes to the spot on the floor exactly where the ball comes down to the floor.

**Ruling:** Legal. A1 may continue to dribble. The item (c) of 4-7 which provides the dribble ends when "the dribbler is unable to immediately catch or continue to dribble the ball" refers to those acts in which the dribbler loses control of the ball, thereby, not enabling him to give direction to it. In order to be a dribbler, he must have control and when he puts the ball to the floor at a spot intended and this is by design or plan, the dribble is not ended. The coverage referred to in item (c) implies loss of control and when control is lost, it is no longer a dribble and therefore, the dribble must have ended.

27. **Play:** A1, A2, A3, A4, and A5 are participation in the game when the first half terminates. Without reporting during the half, A6 and A7 replace A4 and A5. The tapped jump ball, which begins the third-quarter, is secured by A1, who dribbles into his front court. The officials are then notified that A6 and A7 did not report.

**Ruling:** A6 and A7 commit fouls when they do not report during the intermission. However, their infractions are ignored because after the ball becomes alive and the clock starts, it is too late to penalize for these fouls which were committed during a dead ball period.

28. **Play:** During a field goal attempt and while the ball is in flight, B1 slaps the backboard, causing it to vibrate. The ball subsequently strikes the backboard and/or the basket ring and very nearly enters the basket. However, it does not.

**Ruling:** A technical foul is charged to B1 for causing the backboard to vibrate. No field goal may be awarded in this situation. It is not basket interference, which would be a violation. The infraction depicted in the play is a technical foul. Should the live ball enter the basket, even though the technical foul has been indicated by the official while the ball is in flight, it would have been a live ball which entered the basket and, therefore, the goal would be scored.

29. **Play:** For a jump ball, A2 and A3 take positions on the restraining circle. B4 and B5 line up directly behind A2 and A3 and within 3 feet of the jump circle.

**Ruling:** Violations by B4 and B5.

**Comment:** Dimensions of the spaces around the jump circle are comparable to those of the spaces along the free throw lane which are 3 feet wide and 3 feet deep. Only one player may occupy each space until the ball is tapped. In the instant situation, B4 and B5 violate because they have taken positions in spaces already occupied. It is true that the rules book does not provide specific coverage supporting this interpretation. However, the support is implied and the interpretation is official.

30. **Play:** During the bonus free throw attempt by A1, B1 backs out of free throw lane space number 3: (a) before; or (b) after the ball touches the ring or the backboard or the free throw ends.

**Ruling:** Violation in (a). Legal action by B1 in (b). In (a), if the try is successful, the goal counts and the violation is

(Continued on Page Twelve)



**FEBRUARY, 1970****VOL. XXXII—NO. 7**

Published monthly, except June and July, by the Kentucky High School Athletic Association  
Office of Publication, Lexington, Ky. 40501  
Second class postage paid at Lexington, Kentucky  
Editor . . . . . THEO. A. SANFORD  
Assistant Editor . . . . . J. B. MANSFIELD  
Lexington, Ky.

**BOARD OF CONTROL**

President . . . . . Ralph C. Dorsey (1966-70), Horse Cave  
Vice-President . . . . Foster J. Sanders (1966-70), Louisville  
Directors—Morton Combs (1968-72), Carr Creek; W. H. Crow-  
dus (1968-71), Franklin; Don Davis (1967-71), Independ-  
ence; James T. Dotson (1968-72), Pikeville, Lee T. Mills  
(1969-73), Frankfort; Richard Vincent (1969-73), Morgan-  
field.  
Subscription Rate . . . . . \$1.00 per Year

*From the Commissioner's Office***1970 District Tournament Sites**

- |                        |                             |
|------------------------|-----------------------------|
| 1. Fulton              | 33. Boone County            |
| 2. Paducah Tilghman    | 34. Holmes                  |
| 3. Wingo               | 35. Newport Catholic        |
| 4. Murray University   | 36. Highlands               |
| 5. Caldwell County     | 37. Bourbon County          |
| 6. Henderson County    | 38. Pendleton               |
| 7. West Hopkins        | 39. Mason County            |
| 8. Hopkinsville        | 40. George Rogers Clark     |
| 9. Daviess County      | 41. Good Shepherd           |
| 10. Muhlenberg Central | 42. Mercer County           |
| 11. Ohio County        | 43. Henry Clay              |
| 12. Leitchfield        | 44. Model Laboratory        |
| 13. Russellville       | 45. Boyle County            |
| 14. Warren East        | 46. Russell County          |
| 15. Glasgow            | 47. Somerset                |
| 16. Tompkinsville      | 48. London                  |
| 17. North Hardin       | 49. Jackson County          |
| 18. LaRue County       | 50. Whitley County          |
| 19. Bardstown          | 51. Bell County             |
| 20. Campbellsville     | 52. Harlan                  |
| 21. Central            | 53. Whitesburg              |
| 22. Butler             | 54. Hazard                  |
| 23. Doss               | 55. Knott County            |
| 24. Southern           | 56. Wolfe County            |
| 25. St. Xavier         | 57. Warfield                |
| 26. Trinity            | 58. Mavtown                 |
| 27. Fern Creek         | 59. Dorton                  |
| 28. Waggener           | 60. Elkhorn City            |
| 29. Taylorsville       | 61. University Breckinridge |
| 30. Henry County       | 62. Hitchens                |
| 31. Carroll County     | 63. Raceland                |
| 32. Owen County        | 64. Paul G. Blazer          |

**STATE SWIMMING MEETS**

The 1970 Class AAA State High School Swimming Meet will be held at the Plantation Swim Club pool, Louisville, on February 27-28, the Class AA meet at the University of Kentucky pool, Lexington, on April 3-4. The meet for girls will be held on Friday at each location, beginning at 1:00 P.M.; the meet for boys on Saturday, beginning at 9:00 A.M.

Class AAA will include those high schools with an enrollment of 900 or more (grades 10-12), and Class AA will include those schools with an enrollment of less than 900. All-male or all-female schools with an enrollment of 450 or more are placed in Class AAA. General regulations concerning the meets appear in the K.H.S.A.A. booklet. All rules appearing in the 1970 scholastic section of the N.C.A.A. Swimming

Guide will be followed unless there is some difference between these regulations and those adopted by the Board of Control. In such an event, K. H.S.A.A. rules will prevail.

Only those swimmers who qualify for the finals will be given expense allowances for transportation, lodging, and meals.

Schools sponsoring boys' teams in swimming are: Atherton, Ballard, Beechwood, Boone Co., Bowling Green, Bryan Station, Campbell Co., Covington Catholic, Dixie Heights, Eastern, Fern Creek, Fort Knox, Good Shepherd, Henry Clay, Highlands, Hopkinsville, Kentucky Military Institute, Lafayette, Louisville Country Day, Model Laboratory, Murray, Newport, Newport Catholic, Oneida Institute, Paducah Tilghman, Paul G. Blazer, St. Xavier, Seneca, Shelbyville, Simon Kenton, Tates Creek, Trinity, University Breckinridge, Waggener, Westport, Woodford County.

Schools sponsoring girl's teams are: Ballard, Beechwood, Bourbon County, Bowling Green, Bryan Station, Dixie Heights, Eastern, Fern Creek, Fort Knox, Henry Clay, Highlands, Hopkinsville, Jeffersonton, Lafayette, Model Laboratory, Murray, Newport, Norte Dame Academy, Paducah Tilghman, Paul G. Blazer, Sacred Heart Academy, Seneca, Shelbyville, Tates Creek, University Breckinridge, Villa Madonna Academy, Waggener, Westport, Woodford County.

**1970 Regional Tournament Sites**

(1) Murray State University, (2) Madisonville-North Hopkins High School, (3) Owensboro Sportscenter, (4) Western Kentucky University, (5) Hart County High School, (6) Freedom Hall, (7) Freedom Hall, (8) Henry County High School, (9) Holmes High School, (10) Mason County High School, (11) U.K. Coliseum, (12) Boyle County High School, (13) Knox Central High School, (14) Breathitt County High School, (15) Prestonsburg High School, (16) Morehead State University.

**APPROVED OFFICIALS**

Since the list of Approved officials appeared in the January issue of the ATHLETE, two additional officials have qualified for the higher ratings. They are Jack H. Hardin and Wes Lillie.

**Minutes of Board Meeting**

The Board of Control of the Kentucky High School Athletic Association met at the Kentucky Hotel, Louisville, on Saturday morning, January 24, 1970. The meeting was called to order by President Ralph C. Dorsey at 8:30, with all Board Members, Commissioner Theo. A. Sanford, and Assistant Commissioners J. B. Mansfield and Billy V. Wise present. The invocation was given by James T. Dotson.

Don Davis moved, seconded by W. H. Crowdus, that the reading of the minutes of the December 20th meeting be waived since the members of the Board had received copies of these minutes. The motion was carried unanimously.

The Commissioner recommended that the following regulations concerning the fees for district and regional basketball tournament officials be adopted: The district tournament official shall receive a fee of \$25.00 per game, the regional tournament official a fee of \$30.00 per game. The transportation allowance shall be 10 cents per mile for all necessary travel. In the event that it is necessary for the official to remain overnight at the tournament site, he shall be paid an additional \$20.00 per day for lodging and meals. Tom Mills moved, seconded by Richard Vincent, that the regulations recommended by the Commissioner be adopted. The motion was carried unanimously.

There was a discussion of possible new proposals to be submitted by the Board at the forthcoming 1970 Delegate Assembly. No action was taken on these proposals at this time.

Chairman Foster J. Sanders of the Retirement Committee presented to the Board a list of the objectives of his committee with respect to an improved retirement program for As-

sociation employees. These objections are as follows:

1. To make the retirement program for executives comparable with the Teachers Retirement System;

2. To take into consideration the present non-contribution of the executives toward the insurance part of the present program;

3. To improve the present retirement program for clerical employees;

4. To sign contractual agreements with the executives, providing for minimum monthly payments from the K.H.S.A.A. Retirement Fund to supplement Social Security payments and insurance annuities;

5. To recommend adequate funding of the improved program.

Mr. Sanders moved, seconded by James T. Dotson, that the Board of Control accept as Board policy the retirement program objectives which his committee had presented. The motion was carried unanimously.

The Commissioner reported to the Board certain contracts which he had made by direction of the Building Committee with respect to a site for the proposed new K.H.S.A.A. building, Chairman Don Davis of the Building Committee indicated to the Board the building site which was his committee's first choice, and all members of the Board concurred with this selection. The Building Committee was directed to proceed in implementing a plan by which the present fair market values of the properties involved might be involved.

President Ralph C. Dorsey gave a report on the 1970 mid-winter National Federation Conference, held at St. Charles, Illinois.

Assistant Commissioner Billy V. Wise gave a report on some of the football rules changes for 1970.

James T. Dotson moved, seconded by Morton Combs, that all bills of the Association for the period beginning December 1, 1969, and ending December 31, 1969, be allowed. The motion was carried unanimously.

There being no further business, the meeting adjourned.

### TRACK ASSIGNMENTS

Track regulations adopted by the Board of Control provide that the state shall be divided into classes and regions by the Commissioner who will assign the schools to the regional sites. For the first time, there are three classes in Girls' Track. The 1970 assignments are as follows:

#### TRACK—CLASS A GIRLS

Paducah Region-Ballard, Crittenden County, Lyon County, Murray, Murray University, Providence, Reidland, St. Mary, South Marshall, Trigg County.

Bowling Green Region-Austin Tracy, Cumberland County, Metcalfe County, Park City, Russellville, Temple Hill, Tompkinsville.

Fort Knox Region-Holy Name, Hughes-Kirk, Kentucky School for the Blind, West Hopkins.

Boone County Region-Belleuve, Dayton, Henry County, Ludlow, Silver Grove, Trimble County.

Lexington Region-Frankfort, Harrodsburg, Lexington Catholic, Lincoln, Paris, Sayre.

Richmond Region-Boyle County, Burgin, Burnside, Hazard, Hindman, Kentucky School for the Deaf, Monticello, Oneida.

Barbourville Region-Bush, Corbin, Fleming-Neon, Harlan, London, Lynn Camp, St. Camillus, Williamsburg.

Morehead Region-Bath County, Elkhorn City, Maysville, Mullins, Paintsville, Prichard, University Breckinridge, Wurtland.

#### TRACK—CLASS AA GIRLS

Paducah Region-Calloway County, Christian County, Hopkinsville, Lone Oak, North Marshall, Paducah.

Henderson County Region-Daviess County, Henderson, Henderson County, Madisonville-North Hopkins, Owensboro, Union County.

Bowling Green Region-Adair County, Bowling Green, Franklin County, Franklin-Simpson, Glasgow, Greensburg, Russell County, Warren Central.

Fort Knox Region-Breckinridge County, East Hardin, Fort Knox, Meade County, Nelson County, North Hardin, Oldham County, Shelby County, Shopville.

Boone County Region-Boone County, Campbell County,

Carroll County, Newport, Pendleton County, Simon Kenton, Lexington Region-Bourbon County, Bryan Station, Franklin County, Harrison County, Henry Clay, Lafayette, Scott County, Tates Creek, Woodford County.

Richmond Region-Danville, Knox Central, M. C. Napier, Madison Central, Middlesboro, Montgomery County, Somerset.

Morehead Region-Boyd County, Fleming County, Johnson Central, Louisa, Mason County, Paul G. Blazer, Prestonsburg, Rowan County, Russell.

#### TRACK—CLASS AAA GIRLS

Butler Region-Ahrens Trade, Butler, Central, Loretto, Louisville Male, Shawnee.

Atherton Region-Durrett, Fairdale, Holy Rosary, Jefferson-town, Moore, Sacred Heart.

Iroquois Region-Angela Merici, Doss, Iroquois, Jesse Stuart, Valley, Western.

Eastern Region-Assumption, Eastern, Fern Creek, Mercy Academy, Seneca, Ursuline, Westport.

#### TRACK—CLASS A BOYS

Paducah Region-Crittenden County, Fort Campbell, Fulton, Heath, Lyon County, Murray, Murray University, Providence, Reidland, St. Mary, South Marshall, Trigg County.

Bowling Green Region-Austin Tracy, Bremen, Caverna, Cumberland County, Gamaliel, Hiseville, Metcalfe County, Park City, Russellville, Temple Hill, Tompkinsville, University.

Fort Knox Region-Bardstown, Campbellsville, Clarkston, Frederick-Fraize, Ky. Military Institute, Kentucky School for the Blind, Lebanon, Leitchfield, Louisville County Day, Portland Christian, St. Augustine, West Hardin.

Boone County Region-Belleuve, Dayton, Eminence, Grant County, Henry County, Ludlow, Nicholas County, Owen County, Trimble County.

Lexington Region-Frankfort, Georgetown, Harrodsburg, Lexington Catholic, Lincoln, Mercer, Millersburg Military Institute, Paris, Shelbyville.

Richmond Region-Berea, Burgin, Burnside, Garrard County, Hazard, Jackson, Kentucky School for the Deaf, Leatherwood, Model, Monticello, Mt. Sterling, Oakdale Christian, Oneida Institute, Shopville, Stanford.

Barbourville Region-Bush, Corbin, Fleming-Neon, Harlan, Hazel Green, Jenkins, Letcher, London, Lone Jack, Lily, Lynn Camp, Pineville, Riverside Christian, Williamsburg.

Morehead Region-Bath County, Breckinridge University, Elkhorn City, Fairview, Feds Creek, Johns Creek, Maysville, Menifee County, Millard, Morgan County, Mullins, Paintsville, Phelps, Pikeville, Prichard, Raceland, Virgie, Wurtland.

#### TRACK—CLASS AA BOYS

Paducah Region-Caldwell County, Calloway County, Christian County, Hopkinsville, Lone Oak, Mayfield, North Marshall, Paducah.

Henderson Region-Daviess County, Henderson, Henderson County, Madisonville-North Hopkins, Ohio County, Owensboro, Owensboro Catholic, Union County, Webster County.

Bowling Green Region-Adair County, Bowling Green, Butler County, Franklin-Simpson, Glasgow, Greensburg, Hart County, LaRue County, Russell County, Taylor County, Todd Central, Wayne County.

Fort Knox Region-Breckinridge County, East Hardin, Elizabethtown, Fort Knox, Meade County, Nelson County, North Hardin, Oldham County, Shelby County, Shepherdsville.

Boone County Region-Boone County, Brossart, Campbell County, Carroll County, Covington Catholic, Dixie Heights, Highlands, Holmes, Lloyd, Newport, Newport Catholic, Simon Kenton.

Lexington Region-Bourbon County, Bryan Station, Franklin County, George R. Clark, Harrison County, Henry Clay, Jessamine County, Lafayette, Pendleton County, Scott County, Tates Creek, Washington County, Woodford County.

Richmond Region-Bell County, Boyle County, Danville, Estill County, Knox Central, Madison Central, M. C. Napier, Middlesboro, Montgomery County, Somerset, Whitesburg.

Morehead Region-Boyd County, Fleming County, Johnson Central, Louisa, McKell, Mason County, Paul G. Blazer, Prestonsburg, Rowan County, Russell.

#### TRACK—CLASS AAA BOYS

Flaget Region-Butler, Central, duPont Manual, Flaget, Louisville Male, Shawnee.

Atherton Region-Atherton, DeSales, Durrett, Moore, St. Xavier, Southern, Thomas Jefferson.

Iroquois Region-Bishop David, Doss, Fairdale, Iroquois, Pleasure Ridge Park, Stuart, Valley, Western.

Eastern Region-Ballard, Eastern, Fern Creek, Jefferson-town, Seneca, Trinity, Waggener, Westport.



## Athletic Specialization

by Clifford B. Fagan

INTERSCHOLASTIC ATHLETICS ORIGINATED as a result of student body interest and support. In the beginning, faculties were very skeptical about accepting athletics into the school program. This reluctance was due simply to the fact that athletics at that time were not considered to be educational. It was not even acknowledged that they had educational potential. As a matter of fact, most school authorities believed schools would be much better off without programs of football, basketball, baseball, and track and field.

AS EDUCATORS RECOGNIZED the unique educational opportunities provided by properly supervised interscholastics, they also realized that athletics inherently invite exploitation of both the participant and the school program. It was immediately acknowledged that without proper safeguards abuses inevitably result. Therefore, the faculties, after accepting interscholastic athletics as an integral part of the program, formulated the standards necessary to protect it. For this purpose, schools joined together in state associations, and standards were adopted, along with a means of enforcement.

THE STANDARDS ESTABLISHED have, down through the years, protected the participants. The standards have enabled boys to take part in broad programs and to sample sports of their choice. Those taking part in football were not exploited in a program which continued from September 1st of one year to September 1st of the next. Basketball coaches have not been able to practice the year around, nor have they been able to schedule 45 or 50 games during a season, thereby preventing the basketball player, and sometimes even the school, from taking part in any other activities, no matter how worthwhile the other activities may be. The responsibility of education the whole boy was accepted as being more important than training him to kick a football as far as he possibly could, or to throw the baseball harder than anyone else, or to jump the highest in the state. Concentration on specialization was recognized to reduce the possibility of athletics making their maximum contribution to the whole of the individual.

THE DEFENSIVE COMPLAINT OF COACHES that certain students specialize in math or music, for example, to the exclusion of taking part in other activities, may, in some instances, have validity. However, the fact that there is abuse here and that the student's time is stolen by other activities does not in any way justify athletics for taking the same ill-advised and irresponsible course. Interscholastics have prospered because of the high standards under which they are conducted. These standards have assured the participant that athletics are contributing to his growth and development, as was intended when athletics were accepted into the school program.

IT CANNOT BE DENIED that specialization narrows the development of individuals both mentally and physically. Interscholastics must not contribute to this miscarriage of the educational program. To the contrary, participants and all high school students should have an opportunity to take part in a broad program, and the standards themselves should protect the boys and girls from exploitation which attends specialization. Specialization takes its greatest toll from those who do not reach their ultimate goal, but neither does specialization properly reward those who do.

IF WE ARE TO BE FORTHRIGHT, we must recognize that some place along the way we have lost sight of our true objectives. Many of those who have been responsible for the determination of athletic policies have removed the protection originally given the participant from exploitation. The emphasis for using athletics as an educational tool has diminished, and increased attention is devoted to athletic accomplishment, be it winning or the ultimate in performance. For the most part, these abuses are found in the programs of individual sports. These activities have become increasingly popular. They are, in effect, "Johnny come lately," and the programs do not have the original protection. Sometimes there is a mistaken feeling on the part of coaches that the principles which guide the program for team sports have no application in the case of

individual activities. Appropriate standards serve as protection in both situations.

AS A RESULT of total dedication to winning and with greater emphasis on record establishment, there is more concern for the performance than there is for the performer. This attitude is frequently reflected by specialists, who, because of their overwhelming interest in the skill, lose their educational perspective. Communities and parents are all too often unfamiliar with the educational potential of athletics, and they, too, recognize only winning and championships. In order to be assured of winning, the coaches specialize more and more. The high school athlete is required not only to devote long hours of practice during the sports season, but he must go to summer camps and to special schools, frequently at the cost of both time and money, not only to him but to his family and community as well. The athlete must specialize so he qualifies for a college scholarship. The mistaken attitude that it is the responsibility of the schools to develop world champions in every sport so our country can dominate international competition is popular. While we are pointing to our sports successes, we forget about the number of boys who have been adversely affected by such programs and find out only too late that they have made a great personal sacrifice for which there is no reward.

IT IS VERY TRUE that times change. As a result, objectives change. This principle applies to education, as well as to other aspects of our culture. To keep in tune, state associations must periodically review their standards. The National Federation has long advocated the necessity of such reviews. Those policies and procedures which have become outmoded and which no longer accomplish their purpose or serve their need must be revised.

THEREFORE, IT IS PROPER to ask the question, "Is it the purpose of today's school athletic program to make certain that football stars, or international swimming champions, or national gymnastics champions are produced?" Or is it appropriate to ask, "Are the schools obligated to take measures to insure that boys who play football also develop into well rounded citizens, both while in school and after their playing days are over?" The question remains, "Are school administrators meeting the challenge and are limitations which were established for justifiable reasons being broken down because of pressures by those who do not recognize them or by those who are willing to sacrifice a boy or the school program in the interest of winning championships, outstanding performances, and temporary recognition?"

SCHOOL OFFICIALS ARE TODAY, as they were three decades ago, responsible for protecting the interests of those participating in athletic programs. We emphasize that the purpose of athletics has not changed, nor will it change, nor should it change. Players must not be exploited. Programs in the schools must not be misused. Even though pressures have increased during the several decades, even though there is greater emphasis on winning, and even though national and world championships appear to be more important, these facts do not in any way absolve the school administrators from doing the job they have accepted.

PRESSURES ON THE ADMINISTRATOR today are greater than they have ever been. This makes those responsible for protecting the boy and the school from exploitation have a more difficult task. The easy way is to remove the protection and let both the boy and the school be victimized. However, the challenge must be met. It must be met head-on.

THE TRUE EDUCATOR will, in the future, we are certain, take pride in identifying with boys and girls who are better citizens because they have had an opportunity to participate in inter-school activities. We doubt that an educator will believe he has done his job if, because of his laxity, a champion performer has been shortchanged in the other aspects of his education. The dedicated educator will take pride in the fact that he has administered an athletic program, participation in which enabled the boys and girls to emerge as better educated citizens.

# Football Officials' Ratings On Sportsmanship Of K. H. S. A. A. Member Schools - 1969

SCHOOL	COACH				OTHER SCHOOL OFFICIALS					CROWD					TEAM			
	E	G	F	P	E	G	F	P	E	G	F	P	E	G	F	P		
Allen County	29	8	1	0	34	4	0	0	33	5	0	0	32	5	1	0		
Anderson County	42	12	1	0	44	10	1	0	42	12	1	0	43	11	1	0		
Atherton	36	5	1	0	40	2	0	0	39	3	0	0	34	5	2	1		
Ballard	8	6	1	1	11	4	0	0	10	3	2	0	8	4	4	0		
Bardstown	39	15	0	0	44	10	0	0	40	10	4	0	40	12	2	0		
Bath County	35	5	1	0	35	6	0	0	32	9	0	0	35	6	0	0		
Beechwood	22	7	1	1	26	5	0	0	22	9	0	0	24	7	0	0		
Belfry	31	3	0	0	32	2	0	0	28	4	2	0	29	5	0	0		
Bell County	31	4	0	0	32	4	0	0	29	5	1	0	30	4	0	0		
Bellevue	41	4	0	0	39	5	0	0	34	10	1	0	34	7	3	0		
Berea Community	17	8	4	0	24	6	0	0	19	10	1	0	19	7	4	0		
Bishop David	26	13	6	4	31	15	1	2	31	13	2	3	32	13	2	2		
Boone County	29	12	6	1	34	12	1	1	32	14	1	1	33	11	3	1		
Bourbon County	26	11	5	3	37	5	2	0	33	9	2	1	31	11	2	1		
Bowling Green	30	17	0	0	33	13	0	1	29	17	1	1	29	16	2	0		
Boyd County	38	11	1	0	42	7	0	0	38	10	1	1	41	8	1	0		
Boyle County	40	3	1	0	39	4	1	0	37	6	1	0	40	4	0	0		
Breckinridge County	28	7	2	1	31	6	1	0	29	9	0	0	27	8	3	0		
Bryan Station	45	15	3	0	49	13	0	0	45	16	1	0	47	14	2	0		
Burgin	13	5	1	0	17	2	0	0	10	5	3	1	11	7	1	0		
Butler	39	15	2	1	43	13	0	1	43	14	0	0	44	12	1	0		
Butler County	27	10	1	0	35	3	0	0	31	6	1	0	30	8	0	0		
Caldwell County	51	11	2	0	56	8	0	0	49	15	0	0	52	10	2	0		
Campbell County	39	11	9	0	36	14	4	0	31	22	2	2	31	24	1	1		
Campbellsville	15	15	7	5	22	18	1	1	20	18	2	2	24	14	3	1		
Carroll County	20	9	4	3	26	8	1	1	27	7	2	0	18	14	4	0		
Catlettsburg	40	8	0	0	40	8	0	0	39	6	2	1	39	9	0	0		
Caverna	20	15	0	0	24	11	0	0	24	11	0	0	22	12	1	0		
Central	15	13	5	2	20	12	2	1	16	12	5	2	15	12	7	1		
Christian County	36	17	2	0	42	13	0	0	37	18	0	0	32	18	3	2		
Corbin	53	3	0	0	55	1	0	0	48	7	1	0	52	4	0	0		
Covington Catholic	15	11	5	0	31	5	4	0	22	13	4	1	25	11	2	2		
Crittenden County	31	3	0	0	31	3	0	0	26	7	0	1	28	6	0	0		
Cumberland	36	10	2	0	41	5	1	0	36	11	1	0	33	14	0	0		
Cumberland County	18	12	1	7	21	9	2	7	25	13	0	0	26	12	0	0		
Danville	38	19	4	0	46	15	0	0	39	21	1	0	43	18	0	0		
Daviess County	16	17	4	2	28	11	0	0	30	9	0	0	25	12	2	0		
Dayton	33	11	1	0	36	9	0	0	29	14	0	1	30	13	1	0		
DeSales	28	5	4	2	26	12	1	0	25	12	1	1	27	11	0	1		
Dixie Heights	38	12	1	1	42	8	2	0	33	18	1	0	35	17	0	0		
Doss	38	11	0	0	40	9	0	0	33	16	0	0	32	16	1	0		
duPont Manual	44	4	0	0	42	6	0	0	38	10	0	0	39	9	0	0		
Durrett	35	13	4	1	35	18	0	0	29	21	3	0	31	20	2	0		
Eastern	76	15	5	5	35	13	3	0	35	14	2	0	33	13	5	0		
Elizabethtown	42	9	1	0	44	4	0	0	40	10	1	1	43	9	0	0		
Elkhorn City	33	9	0	0	39	3	0	0	33	8	1	0	35	7	0	1		
Eminence	27	7	2	0	30	6	0	0	25	10	1	0	26	8	2	0		
Evaris	23	10	0	2	26	7	0	1	24	10	0	1	24	7	1	3		
Fairdale	30	12	4	4	25	18	4	3	26	19	2	3	29	12	6	3		
Fern Creek	33	17	3	2	36	13	2	3	36	19	0	0	32	17	5	1		
Flgel	29	12	0	1	34	9	0	0	28	13	1	0	29	13	0	0		
Fleming County	33	9	0	0	32	10	0	0	32	10	0	0	30	10	2	0		
Fleming Neosho	24	11	2	2	23	9	0	0	21	12	3	1	26	19	4	0		
Fort Campbell	26	7	0	0	29	4	0	0	26	7	0	0	29	4	0	0		
Fort Knox	20	12	1	3	27	8	1	0	25	8	3	0	19	13	4	0		
Frankfort	29	12	2	0	33	8	1	1	31	9	3	0	32	11	0	0		
Franklin County	40	18	8	1	48	15	3	1	46	20	1	0	45	19	3	0		
Franklin Simpson	14	10	3	3	21	8	0	1	19	10	0	1	17	10	2	1		
Fulton	26	4	0	1	28	3	0	0	25	4	2	0	26	3	2	0		
Fulton County	16	10	4	1	21	10	0	0	17	12	2	2	21	8	1	1		
Ganapati	5	5	0	0	15	2	0	0	15	2	0	0	15	2	0	0		
Garrard County	34	6	1	0	36	4	1	0	34	6	1	0	34	7	0	0		
George Rogers Clark	34	7	4	6	40	9	1	0	40	8	2	0	39	11	0	0		
Georgetown	34	10	2	3	38	9	1	1	36	11	1	1	33	12	4	0		
Glasgow	37	10	1	2	43	7	0	0	38	12	0	0	39	11	0	0		
Greensburg	26	12	1	0	31	8	0	0	29	9	1	0	27	9	1	2		
Harlan	21	7	2	1	31	6	0	0	27	8	2	0	31	5	0	1		
Harrison County	34	13	3	0	45	5	0	0	38	7	3	2	37	9	3	1		
Harrodsburg	30	17	1	0	37	10	1	0	34	13	1	0	34	13	0	1		
Hazard	25	10	2	2	33	4	2	0	28	9	0	11	23	12	1	3		
Hazel Green	25	6	0	0	21	9	0	0	22	9	0	0	22	8	0	1		
Henderson	14	10	10	4	32	5	0	1	29	9	0	0	23	12	2	1		
Henderson County	30	8	1	0	34	5	0	0	33	6	0	0	28	10	1	0		
Henry Clay	31	8	1	0	37	3	0	0	35	5	0	0	36	4	0	0		



Henry County	20	12	4	3	22	14	1	2	19	11	5	4	20	12	5	2
Highlands	33	13	1	0	38	7	2	0	32	14	1	0	28	18	1	0
Hiseville	15	7	0	0	15	0	0	16	3	0	0	28	8	0	0	
Holmes	25	9	5	1	28	12	0	0	21	13	2	4	23	14	3	0
Hopkinsville	35	13	2	4	43	9	2	37	14	1	2	38	13	2	1	
Iroquois	28	13	2	5	33	12	1	2	28	18	2	0	31	17	0	0
James A. Cawood	25	10	1	3	29	8	1	1	17	8	7	7	24	13	1	1
Jeffersonton	34	9	0	0	34	8	1	0	28	14	1	0	34	8	1	0
Jenkins	31	6	3	0	34	6	0	0	29	9	2	0	28	10	2	0
Jessamine County	25	9	2	4	34	5	0	2	31	8	0	2	28	10	1	2
Jesse Stuart	2	5	2	1	5	5	0	0	4	6	0	0	4	5	1	0
Johns Creek	45	3	0	0	44	4	0	0	43	5	0	0	40	7	0	1
Ky. Military Institute	27	8	1	0	32	4	0	0	30	6	0	0	26	10	0	0
Kentucky School for Deaf	16	0	0	0	15	1	0	0	15	1	0	0	12	4	0	0
Knox Central	34	1	0	0	32	3	0	0	31	4	0	0	31	4	0	0
Lafayette	30	17	1	1	36	13	0	0	30	10	5	4	35	14	0	0
LaRue County	31	8	0	0	30	7	1	0	30	8	1	0	31	8	0	0
Lebanon	23	9	2	3	29	7	0	1	21	11	4	1	25	10	1	1
Leslie County	30	10	0	1	31	8	1	0	29	12	0	0	26	12	2	1
Lewis County	18	4	0	0	17	4	0	0	13	9	0	0	14	8	0	0
Lily	17	7	2	3	22	4	2	0	23	6	0	0	23	4	1	1
Lloyd	28	11	2	0	32	9	0	0	27	13	0	1	28	12	1	0
London	33	4	0	0	31	5	1	0	28	8	1	0	29	8	0	0
Lone Oak	20	5	1	0	23	2	1	0	21	5	0	0	23	3	0	0
Louisia	32	8	0	0	32	8	0	0	23	16	1	0	20	13	3	0
Louisville Country Day	16	8	5	2	18	6	4	3	18	7	2	4	17	8	3	3
Louisville Male	26	11	0	1	23	13	0	2	22	14	2	0	23	13	1	1
Ludlow	11	15	8	9	26	15	2	0	16	22	3	2	14	19	5	5
Lynch	34	9	2	2	38	9	0	0	31	11	4	1	33	11	0	1
Lynn Camp	23	4	3	0	24	5	0	0	25	4	1	0	25	4	3	1
McKell	11	7	3	12	28	4	0	1	23	6	3	1	21	6	5	1
Madison	24	12	4	0	27	9	1	1	24	13	2	1	30	10	0	0
Madison Central	36	10	5	0	40	9	2	0	40	9	2	0	37	13	1	0
Madisonville-N. Hopkins	27	12	2	2	35	6	1	1	34	8	1	0	29	11	2	1
Marion C. Moore	5	4	1	0	4	4	1	1	5	5	0	0	5	4	1	0
Mayfield	36	7	1	0	39	4	1	0	33	5	2	4	36	5	2	1
Maysville	28	9	0	0	30	7	0	0	25	9	3	0	27	10	0	0
M. C. Napier	19	4	7	7	25	8	3	1	20	8	4	5	17	8	6	6
Meade County	23	8	3	3	26	5	0	2	23	10	0	0	25	8	0	0
Mercer County	29	6	2	0	35	5	0	0	34	6	1	1	31	6	4	1
Metcalfe County	37	6	0	0	34	6	0	0	34	6	0	0	34	6	0	0
Middlesboro	27	11	1	1	34	5	0	0	32	6	2	0	30	10	0	0
Millersburg Military Institute	38	7	0	0	40	5	0	0	35	9	1	0	38	6	1	0
Montgomery County	22	20	2	5	37	11	0	0	31	13	4	1	28	16	1	4
Morgan County	21	7	2	3	24	7	2	0	21	11	1	0	18	9	1	4
Mt. Sterling	43	7	0	3	46	5	1	1	43	4	1	5	51	2	0	0
Mt. Vernon	21	0	0	1	21	0	1	0	21	1	0	0	19	2	1	0
Mullins	22	10	0	0	26	6	0	0	23	9	0	0	24	8	0	0
Murray	35	0	0	0	35	0	0	0	31	4	0	0	34	0	1	0
Nelson County	26	9	3	2	29	10	0	0	23	15	1	1	25	12	2	1
Newport	19	13	4	3	29	9	0	0	21	14	2	1	20	15	2	1
Newport Catholic	8	6	2	0	11	4	1	0	6	10	0	0	7	7	1	1
Nicholas County	29	5	0	0	30	3	0	0	27	7	0	0	26	8	0	0
North Hardin	32	7	0	0	35	3	0	0	33	5	1	0	31	6	1	0
North Marshall	32	3	0	0	32	3	0	0	32	3	0	0	33	2	0	0
Ohio County	27	13	0	0	33	7	0	0	27	12	1	0	26	13	1	0
Oldham County	28	17	1	0	31	14	1	0	29	16	1	0	27	18	1	0
Owen County	34	5	1	0	34	6	0	0	31	9	0	0	32	5	1	0
Owensboro	32	10	0	0	35	7	0	0	34	8	0	0	31	11	0	0
Owensboro Catholic	29	8	0	2	34	4	0	1	32	7	0	0	30	8	1	0
Paducah Tilghman	32	6	0	0	35	3	0	0	34	4	0	0	33	4	1	0
Paintsville	29	8	0	0	28	9	0	0	25	11	1	0	23	12	2	0
Paris	34	10	1	0	38	6	1	0	29	16	0	0	31	12	2	0
Park City	31	7	0	0	35	2	1	0	15	2	1	0	13	5	0	0
Paul G. Blazer	20	7	4	4	14	7	0	0	44	26	2	1	27	19	4	0
Pikeville	24	16	3	1	27	17	2	0	25	16	2	1	27	14	3	0
Pineville	37	4	1	0	39	3	0	0	34	6	2	0	37	5	0	0
Pleasure Ridge Park	25	11	4	2	25	14	3	0	27	12	2	1	25	14	3	0
Prestonsburg	28	8	0	0	29	5	1	0	24	11	0	0	26	9	1	0
Raceland	22	10	2	0	31	2	1	0	27	5	1	1	24	9	1	0
Rowan County	29	10	1	0	31	9	0	0	23	13	1	3	27	12	1	0
Russell	43	10	0	0	47	6	0	0	37	16	0	0	41	12	0	0
Russell County	16	4	0	0	15	4	0	0	15	7	0	0	14	6	0	0
Russellville	33	6	0	0	35	4	0	0	30	8	1	0	35	4	0	0
St. Xavier	44	14	0	0	43	14	1	0	35	23	0	0	41	16	0	1
Sayre	22	3	0	0	21	2	1	0	18	7	0	0	20	4	1	0
Scott County	24	13	4	4	34	10	0	0	30	12	2	1	29	11	4	1
Seneca	24	15	3	0	25	17	0	0	22	18	2	0	22	16	3	1
Shawnee	19	14	3	2	24	13	1	0	23	11	3	1	18	13	5	2
Shelby County	27	8	1	3	28	5	0	0	28	8	0	0	29	7	0	0
Shelbyville	34	8	0	0	35	7	0	0	31	10	1	0	31	10	1	0
Shepherdsville	27	17	1	1	34	12	0	0	20	23	3	0	18	20	6	2
Simon Kenton	30	14	2	0	32	9	3	1	27	15	2	1	31	12	2	0
Somerset	24	6	5	10	30	11	1	2	21	10	6	6	26	11	6	2
Southern	30	11	5	1	30	12	2	3	27	14	5	1	24	13	6	3
Stanford	38	3	1	0	38	3	1	0	30	9	3	0	33	7	1	1

Tates Creek	26	15	5	11	36	11	2	0	39	8	1	1	40	8	1	0
Temple Hill	14	3	0	0	15	2	0	0	15	2	0	0	14	3	0	0
Thomas Jefferson	25	12	3	10	33	15	2	0	30	18	2	0	26	17	3	4
Todd Central	9	7	0	0	13	3	0	0	11	5	0	0	12	4	0	0
Tompkinsville	39	7	0	0	39	7	0	0	37	8	0	1	40	6	0	0
Trigg County	34	15	3	5	49	7	1	0	41	13	2	1	41	12	4	0
Trinity	27	10	0	0	28	9	0	0	25	11	1	0	27	10	0	0
Union County	33	9	0	1	35	7	1	0	36	7	0	0	22	11	4	6
Valley	36	12	2	0	35	15	0	0	34	15	1	0	32	16	2	0
Virgie	25	10	1	1	25	11	1	0	23	12	2	0	24	11	2	0
Waggener	29	13	7	1	32	15	2	1	32	16	2	0	25	17	3	5
Warren Central	23	27	4	3	46	10	0	1	39	16	1	1	35	19	3	0
Warren East	11	11	4	1	17	8	1	1	16	8	1	2	15	10	1	1
Washington County	32	4	2	2	36	4	0	0	33	2	3	2	29	7	2	2
Wayne County	16	16	3	2	25	11	0	0	25	10	2	0	26	7	3	1
Western	38	14	2	0	40	13	1	0	33	20	1	0	34	18	2	0
Westport	19	21	7	3	26	24	0	0	28	22	0	0	25	19	6	0
Wheelwright	22	8	7	2	26	12	1	0	22	14	1	2	26	9	3	1
Whitesburg	28	4	5	2	30	8	1	0	25	8	5	1	23	10	6	0
Whitley County	36	3	0	0	33	5	0	0	31	8	0	0	31	7	0	0
Williamsburg	31	2	0	0	33	0	0	0	25	8	0	0	21	8	3	1
Woodford County	35	9	3	0	39	7	0	0	31	14	2	0	38	9	0	0
Wurtland	28	7	1	8	35	4	1	3	31	9	2	2	23	11	3	7

## Schools' Ratings On Football Officials

The following ratings were received on football officials registered with the K.H.S.A.A. during 1969-1970. The numbers following each name represent respectively the number of Excellent, Good, Fair, and Poor ratings given to the official.

Acree, Aaron, 0-1-0-0; Adams, Michael, 0-4-0-0; Ahrens, James, 0-3-1-0; Albright, James R., 6-4-2-1; Allen, Arthur, 0-6-0-0; Allison, Roy, 4-5-3-0; Anders, Raleigh, 6-10-4-2; Anderson, Glenn S., Jr., 2-3-1-0; Anderson, John G., 2-7-2-0; Ashworth, Paul, 0-1-0-0; Ayers, Edward L., 7-3-0-0;

Bartels, John T., 4-3-2-1; Batterson, Keith, 0-3-0-0; Beheler, Donald S., 6-9-1-1; Bell, Clarence T., 1-5-0-4; Bennett, Howard, 7-3-0-0; Benzinger, Joseph, Jr., 0-4-0-0; Bero, James J., 1-3-1-1; Blanton, Homer, 2-4-0-0; Blevins, Donald W., 0-1-0-0; Boemker, Bob, 2-6-0-0; Bordy, Philip, 6-4-1-1; Boswell, Martin, 8-5-0-0; Bourne, Pugh, 0-2-1-0; Bowman, Earl G., 7-5-2-0; Boyles, Jerry, 2-1-0-0; Bradford, Robert, 5-8-0-2; Bramble, James, 5-9-0-0; Brashear, Loy Ray, 5-6-0-0; Brauch, Charles J., 0-3-0-1; Brock, Alben, 4-6-1-1; Brotzge, Maurice J., 3-10-1-1; Brown, Bill, 9-10-0-2; Brown, Herman G., 7-6-2-1; Brown, John Scoop, 4-0-0-0; Bullock, Ted., 4-6-1-4; Burgess, Oley, 2-0-0-0; Burke, David, 3-7-2-4; Burke, Harry R., 11-6-1-0; Burkhart, James G., 0-3-1-0; Burton, John, 0-9-1-0; Burton, James, 7-5-1-0;

Cain, Paul D., 3-3-1-2; Calitri, Don L., 2-8-3-1; Callihan, Billy Joe, 1-0-0-0; Canaday, Glenn, 8-10-1-0; Canady, Ray, 7-6-2-1; Cannon, Jerry, 0-1-1-0; Carberg, John H., 8-5-0-0; Carberg, Ralph C., 5-10-0-0; Carlson, David A., 0-1-1-0; Carr, Billy W., 0-4-0-0; Cecil, Morris, 8-3-0-0; Cecil, Roger, 0-0-1-1; Chiswell, Charles L., 0-3-0-0; Cisco, Robert N., 2-6-2-1; Clark, Charles L., 0-9-4-0; Clark, Owen B., 3-5-0-0; Clark, Robert L., 4-6-2-1; Clemmons, Samuel P., 8-5-0-0; Cochran, Roy H., 1-0-0-0; Collins, Ronald K., 2-10-2-0; Cook, Jack W., 1-0-0-0; Cook, Richard N., 4-6-2-1; Cooper, Norman E., 0-0-1-0; Copley, Sidney, 1-2-1-0; Coppler, Arden D., 0-1-0-0; Cornwell, James, 2-6-0-1; Cowan, R. L., 0-4-1-0; Craft, Albert B., 7-9-0-0; Cramer, Bobby F., 1-1-3-4; Craig, Louis, 0-2-0-0; Creekmore, Les, 1-3-0-0; Crider, Ray, 6-5-1-2; Cullum, Harold D., 1-1-0-0; Culp, Willard E., 5-9-0-0; Currutte, Ivan M., 2-1-1-0; Current, Ellis Ray, 4-4-2-1;

Dallman, James W., 2-5-0-0; Daniels, Robert M., 2-2-1-0; Daopoulos, James A., 1-2-0-0; Davis Charles, 0-4-0-0; Davis, Curt, 6-9-3-1; Davis, Ralph C., 1-2-0-0; Deaton, Daniel E., 2-1-0-0; Delaney, William T., 2-2-2-0; Dennedy, Robert T., 0-4-

0-0; Dent, Donald L., 2-8-0-0; Denton, Charles, 5-3-0-0; Denton, William J., 2-11-2-0; Detenber, Gene H., 3-7-2-3; Devine, Edward, 0-1-0-0; Dial, Charles, 0-0-0-2; Dial, Jack W., 0-0-0-2; Dixie, C. P., 0-2-1-1; Downey, Robert F., 0-1-0-0; Downs, Joseph, 0-4-0-1; Drake, Richard R., 11-4-0-0; Draud, Jon E., 5-4-0-0; Dryden, Wallace L., 5-5-1-0; Duff, Earl, 0-1-1-0; Duff, Thomas, 0-2-0-1; Duff, William C., 5-4-0-1; Durbin, Roy V., 0-0-1-0; Durkin, Jack, 7-6-0-0;

Egan, Joseph P., 2-6-0-1; Eidridge, Wayne, 3-1-4-2; Elliott, Carroll, 8-11-1-2; Ellis, Johnny, 1-3-4-4; Elovitz, Carl, 7-8-0-1; Ernst, Edward R., 4-5-2-3;

Faust, John, 3-11-4-0; Fay, John C., 6-9-1-2; Feck, Richard A., 6-5-0-0; Fenimore, Clarke, 1-13-2-0; Ferguson, Roy, 1-10-3-2; Ferguson, Thomas L., 2-0-0-0; Fesmirre, Gerald, 0-2-0-0; Fields, Rickey, 0-2-0-0; Fields, Ronald M., 2-1-0-0; Fish, Leland Gilbert, 8-4-0-0; Fitzpatrick, Ken, 1-11-1-2; Flynn, Bobby, 4-7-0-1; Fortney, Robert Lee, 4-16-2-0; Foster, Berryman, 4-0-0-0; Foster, J. W., 7-5-0-1; Fraley, Bill, 3-4-2-1; Frankel, Louis, 1-12-1-0; Franklin, Clifford, 1-2-0-0; Frazier, Tom Roe, 2-1-0-0; Fryrear, Bill P., 6-7-1-2; Fucci, Dominic, 7-5-1-4; Fuller, Wilton, 7-4-1-1;

Gallaher, Jack, 1-6-1-0; Garrett, Richard, 6-6-2-0; Gentry, Dale J., 4-8-5-2; Gettler, John F., 5-7-0-4; Gfell, George, 7-6-0-2; Goforth, Bob, 0-3-1-0; Golden, Billy J., 4-7-0-0; Gore, Bailey, 5-4-0-2; Gorham, Harry C., 6-6-3-0; Gour, Bob, 5-4-1-0; Grace, Charles K., 8-4-0-1; Grace, H. E., 4-6-1-1; Graham, James, 2-2-0-0; Griggs, John, 7-2-1-0; Gupton, George, 0-5-0-0; Gupton, Lawrence, 0-5-1-0; Guy, Newton, 0-5-0-0;

Hadden, Newell P., 11-7-0-0; Hagan, Joe E., 9-10-4-0; Hagy, Harold J., 0-1-0-0; Hall, Charles E., 4-7-1-0; Hall, William, 2-4-0-0; Hamilton, Mike D., 0-4-0-0; Hammons, J. S., 0-6-0-0; Hancock, Norb, 2-9-0-0; Hancey, Bill, 0-3-0-0; Harjo, Austin A., 4-4-0-1; Harris, David L., 0-4-1-0; Harris, Jerry, 5-5-1-0; Harsh, Ronald B., 1-1-0-0; Hawkins, Donald H., 7-9-0-0; Hawkins, Will A., 5-8-0-0; Heaberlin, Bill, 2-2-0-0; Hedge, David William, 3-13-2-1; Heinichen, Carl C., 3-1-0-0; Heindorf, F. Thomas, 1-2-2-0; Heinze, Frank, 1-1-5-2-0; Hendon, L. J., 4-1-1-1; Herrick, Calvin P., 0-4-0-0; Hina, Charles W., 8-7-2-1; Hina, Henry B., 1-1-0-0; Hofstetter, Joe, 3-2-0-0; Holland, David W., 7-1-2-0; Hollingsworth, Raiph D., 4-7-0-0; Holman, Joseph B., 4-3-1-1; Holman, Bitsy, S. T., 1-10-1-1; Hoithouser, Terry W., 2-4-1-2; Holton, Glenn, 1-0-0-0; Hornsby, Colin, 0-6-1-0; Horsman, Bill, 1-7-2-1; Howard, Jasper, 2-4-1-2; Howard, Robert E., 3-8-1-0; Huber, Carl, 3-7-2-2; Huffine, Gary L., 0-1-0-0; Hunter, James E., 4-12-0-0; Hurley, Ken, 3-3-0-0; Hurley, Robert, 2-4-1-1;

Idoi, Billy Joe, 2-9-0-0; Ingram, William R., 0-5-0-1; Isaacs, Marvin D., 0-2-0-0;

Jacoby, Ben, 6-4-0-0; James, Gene, 2-2-0-0; Jarrell, Frank,

1-0-0-0; Johns, Charles, 3-1-1-1; Johnson, Gordon M., 0-11-2-0; Johnson, Harry, 3-6-0-0; Johnson, Robert F., 0-1-0-0; Johnson, Stan W., 4-3-1-0; Jones, George W., 0-0-0-1; Jones, J. Carl, 5-7-6-1; Jones, William L., 8-6-0-1; Jump, Frank E., 2-5-1-1;

Karr, Don, 4-3-5-2; Kathman, Bernie, 1-0-0-0; Kaufman, Alvin, 6-13-3-0; Kemper, Russ, 3-1-0-0; Kennedy, James R., 1-1-0-0; Kerr, Kenneth, 2-6-1-0; Kimble, Frank, 0-5-0-0; King, Allen, 5-4-0-0; Kirk, Charles, 2-5-4-0; Kiser, Larry L., 0-1-0-0; Kraft, H. Nellis, 3-6-2-1; Kratzenberg, Ralph, 1-0-0-1; Kratzenberg, Richard R., 1-0-0-1; Kratzenberg, Robert R., 1-0-0-1; Kuhl, Lawrence, 8-13-4-2;

Lally, James, 1-0-0-1; Lambert, Irvin, 2-12-2-1; Landers, John F., 4-5-0-1; Lange, William E., 6-13-4-1; Law, William J., 4-10-0-0; Lawson, Leland, 4-0-0-0; Leahy, Pat, 2-6-3-2; Lee, Charles J., 1-0-0-0; Lee, Douglas, 0-1-2-0; Lee, William A., 0-3-1-0; Lefevre, Colman H., 3-3-0-1; Lelhkamp, Thomas F., 2-4-1-1; Leightenheimer, David, 0-1-0-0; Lenahan, Thomas F., 3-11-1-3; LeQuire, Harold, 0-1-2-0; Levy, Arthur, 1-3-1-1; Lewis, Jesse, 1-0-0-0; Lillie, William Westly, 1-4-0-0; Lindon, Bob, 6-7-0-3; Lingo, Henry E., 10-8-1-1; Linkes, Clifford, 0-1-4-2; Lloyd, Birt Leonard, 1-2-0-0; Logan, Doug, 0-2-0-1; Logan, Eli, 4-7-1-2; Long, James E., 1-4-1-0; Lotz, Robert W., 2-10-1-1; Lovall, Tommy, 1-0-0-0; Lowe, Gene T., 9-10-4-2; Lowe, Stan, 4-10-0-1; Lusby, George, 6-9-1-0; Lykins, James O., 0-3-1-0;

McCormick, Donald, 8-11-2-0; McCoy, Larry, 1-6-2-1; McCadden, Jimmie, 3-4-1-2; McGehee, Gordon, 14-4-0-0; McGinty, L. V., 1-6-0-0; McKenzie, Robert L., 1-2-0-0; McLane Albert, 4-9-1-0; McLemore, Jack T., 3-14-3-0; McNamee, Jack, 2-0-0-0; McPeck, Talmadge, 4-1-0-0;

Magruder, Earl, 4-14-1-0; Major, Lucian, 1-1-1-0; Malcolm, Donald, 0-1-0-0; Malone, James F., 1-8-0-0; Maloney, Ross "Pat," 0-1-0-0; Marcum, Bruce, 1-0-0-0; Martin, Thomas F., 1-10-2-1; Mattingly, Charles "Pete," 4-5-1-0; Mattingly, Wayne, 1-2-0-0; May, E. B., Jr., 2-7-1-0; May, Larry, 0-1-0-0; Mayhew, William M., 4-10-1-0; Melmige, James, 4-3-0-0; Merck, Frank, 5-8-7-1; Mercker, George, 12-7-0-0; Mestepey, James, 2-4-1-1; Metcalf, Ken, 10-10-2-1; Metzger, Don, 5-7-0-0; Minta, John, 2-6-2-4; Moody, William R., 2-4-1-1; Mooneyham, James H., 1-9-0-0; Moore, James A., 2-6-0-1; Moore, Larry, 0-1-0-0; Moore, Robert W., 2-9-1-0; Mordica, William A., 6-3-0-0; Morgan, Jimmie Lee, 0-1-0-0; Morgan, Richard, 8-10-4-4; Morris, Gene L., 1-1-0-0; Morris, Jerry, 2-0-1-0; Morrissey, Rockne, 5-1-0-0; Morse, Richard K., 14-3-1-1; Moser, Tom, 2-1-1-0; Moss, Howard, 6-3-0-0; Murray, Thomas, 10-4-1-2;

Neal, Gene, 11-2-4-2; Newman, Bill, 1-1-0-0; Nickell, Carl Duane, 2-5-1-0; Nolan, Michael B., 0-1-1-0; Noland, Douglas, 9-9-1-1; Nord, Bertrand, 7-5-4-3; Nord, Gilbert, 3-5-1-0; Norwood, Donald, 1-3-0-0; Norwood, Thomas R., 1-5-0-0;

Ojama, Ben R., 5-10-0-0; Omer, Harold G., 7-5-6-1; O'Nan, Norman, 3-1-0-0; Orem, Dale L., 7-6-4-0; Osborne, Ted G., 3-6-0-1; Osting, James E., 0-7-0-0;

Pace, Donald W., 4-5-1-1; Pack, Keith, 0-2-0-0; Padgett, R. K., 4-2-4-2; Pardue, Israel L., 0-10-1-1; Parker, Bob L., 2-11-3-1; Parker, Francis V., 4-5-0-1; Parsley, Clyde E., 11-7-0-1; Pate, Lloyd W., 3-8-1-0; Patterson, William C., 0-1-1-0; Paulk, John R., 4-2-2-3; Paxton, Gary R., 4-2-2-0; Peeno, Harry, 5-11-5-0; Pegausch, William E., 3-4-3-0; Pelham, Pete, 0-1-0-0; Perkins, Ronnie, 7-13-2-1; Phipps, James M., 0-3-1-0; Pietrowski, Paul, 0-5-6-0; Finson, Eugene, 1-4-3-5; Pittman, Spencer R., 3-1-4-2; Porco, Kenneth J., 8-6-1-3; Powell, Logan, 5-5-0-1; Powers, Clark, 0-1-0-0; Powers, Elmer, 1-2-0-0; Pugh Roy D., 4-7-0-1;

Ramey, Roy, 0-4-0-0; Ransford, Paul, 0-1-1-0; Rapp, Bill, 2-2-0-0; Rapp, Lowell, 1-0-0-3; Raque, Ronald, 2-15-1-1; Ray, Bob, 7-14-5-0; Ray, Collis R., 1-5-0-0; Ray, Shirley G., 4-4-0-1; Read, Frederick, 1-1-0-0; Redington, Jim T., 5-17-3-1; Reece, Fred, 5-5-0-0; Reece, Jerry T., 6-8-0-2; Reed, Gordon, 10-1-0-0; Renfro, James H., 4-1-0-0; Rhodes, Cecil, 1-2-1-0;

Riggins, Jason M., 2-3-0-0; Riggs, Charles D., 2-7-2-0; Ring, Bill, 6-4-2-4; Roberts, James, 1-6-1-1; Robinson, D. Blake, 0-10-2-1; Robinson, Don L., 3-1-0-0; Rodgers, H. Tom, 2-4-0-0; Roemele, Juett, 1-1-0-0; Rogers, Eldridge, 2-3-1-0; Rolph, Harold J., 0-1-0-0; Rouse, Donald, 0-1-0-0; Russell, Gary E., 6-1-0-1; Russell, Joe A., 3-2-0-0; Russman, Godfrey F., 6-12-0-0;

Sammons, Terry L., 1-6-2-2; Sanders, Mel, 2-3-0-0; Sapp, Edward, 2-9-3-1; Saylor, Carlee, 4-4-0-2; Schmidt, Henry O. 3-0-0; Schmitt, Paul E., 6-5-1-0; Schuble, Charles E., 4-9-6-0; Scott, Bill, 4-3-1-1; Seavers, Joe, 3-8-2-0; Selvy, Curt, 6-9-3-1; Shanks, Thomas E., 1-10-5-2; Shaughnessy, Bernard, 0-1-0-0; Shaw, John H., 7-2-1-0; Shewmaker, Wayne, 7-7-0-2; Simms, Clarence E., 4-5-2-0; Sizemore, Aster, 1-10-0-4; Sligh, Jim, 7-5-0-0; Sloan, Wallace, 4-5-5-3; Slone Earl D., 0-6-7-0; Small, David E., 0-1-0-0; Smith, Robert E., 0-4-0-1; Smith, William E., 1-1-0-0; Snyder, Bernard, 0-2-1-0; South, Stanley P., 0-4-3-1; Spath, William J., 3-13-2-1; Spaulding, Johnny R., 2-5-1-5; Spencer, Edward H., 1-1-0-0; Staley, Jerry, 1-11-2-0; Stark, Dennis W., 0-1-0-0; Starling, Edward, 0-3-0-0; Staten, Joseph, 5-8-3-2; Stephens, Herbert D., 1-2-0-0; Stephenson Harry S., 6-4-0-0; Stevens, William D., 9-12-0-0; Strain, Richard P., 6-4-3-0; Streible, Ronnie, 0-3-0-0; Strong, Arnett, 5-6-1-1; Stuart, Joe G., 0-4-0-1; Stumbo, Jack, 2-1-2-4; Sullivan, A. G., 3-7-1-0; Sullivan, Don Chris, 2-4-0-1; Swarts, Joseph, 1-1-0-0; Swinford, John, 9-6-0-1;

Talbot, William G., 6-10-1-1; Taylor, Dennis H., 3-2-0-1; Taylor, James R., 1-6-2-0; Thomas, Raymond E., 2-2-0-0; Thompson, Jack, 6-5-0-0; Thompson, Ralph N., 1-0-0-0; Thompson, Tom D., 5-7-3-0; Timmering, George E., 2-10-1-0; Treas, Joe W., 4-2-1-1; Treibly, Charles E., 1-8-3-1; Trimer, Norman E., 0-8-0-1;

Uriage, Richard, 5-4-0-1;

Vanzant, Jim, 3-2-0-0; Varner, Ray G., 6-5-2-0; Vennell, Robert H., 3-0-0-0; Vinciguerra, Philip, 2-0-0-0; Vissman, Charles, 3-10-0-0;

Waddell, Billie, 0-1-0-0; Wagner, Jim, 3-11-2-1; Waide, Harry D., 5-6-5-2; Walker, Julian R., 3-8-4-0; Walker, Paul R., 6-5-0-4; Waller, Bobbie, 5-8-0-0; Wanchic, Nicholas, 6-5-1-0; Ward, Tommy, 0-1-2-0; Warren, Buist Buzz, 8-7-1-0; Warren, Kenneth A., 5-7-0-0; Washaleski, Tom, 0-7-1-1; Washer, James P., 2-9-7-2; Washer, Robert Stanley, 8-5-3-1; Watts, Shirley R., 8-6-0-0; Weaver, Clyde L., 1-3-1-1; Weaver, Ray, 4-8-0-0; Webb, Dudley, 4-4-2-0; Weber, Thomas C., 6-7-3-0; Webner, J. Randall, 1-10-0-2; Welch, Robert J., 2-2-0-0; Wheeler, Mellington, 1-0-0-0; Wickham, James R., 3-7-1-0; Wilbert, Donald A., 1-11-1-1; Willey, Harold L., 0-0-0-2; Williams, James H., 0-6-1-6; Willis, Donald A., 1-2-4-4; Wilson, John Pope, 1-5-0-0; Wilson, Louis O., 7-14-0-1; Wilson, Nellus R., 0-2-0-1; Wise, Jack, 5-9-0-1; Wray, Robert, 6-9-3-0; Wright, James L., 1-11-2-0; Wulfeck, James, 0-2-0-0;

Young, Jack, 0-1-2-0;

Zimmer, Thomas, 7-9-1-2.

## Major Activity Of The 1970

### Football Rules Committee

St. Charles, Illinois, January 8-9, 1970

NOTE: This is a brief summary of the more important modifications to the football rules authorized by the National Alliance Rules Committee during its 1970 meeting.

QUESTIONNAIRES for the purpose of determining the acceptance of the committee's action in 1969, and for securing an evaluation of proposed changes were mailed to coaches and officials, to state association offices, the National Junior College Athletic Association, and the National Association of Intercollegiate Athletics. Approximately 19,000 forms were distributed and nearly 9,500 were returned and tabulated. The complete minutes contain a summary of the vote on each



of the listed items and a tabulation of the significant comments which were requested on the back of the questionnaire. The returns indicate a very high degree of satisfaction with the changes which had been made for the 1969 season. Permitting the use of a punt as a free-kick following a safety was favored by more than 96% of the respondents, while providing that when a dead ball foul by one team is followed by a dead ball foul by the opponents the penalties are to be administered separately and in the order of occurrence enjoyed acceptance by nearly 90%. The provision expanding the area in which blocking from the rear is legal, as well as that for awarding two points for the successful try by what would be a touchdown and one point for a field-goal or a safety received support by a margin of more than 1½ to 1. Removing the automatic acceptance or declination provision from the Code was favored by slightly less than 1½ to 1. The revision granting a player's request for a time-out for the purpose of a coach-official conference was favored by 8,131 as contrasted to 1,148 who opposed. A similar number, 8,066, favored specifying that a foul immediately preceding the snap or a free-kick causes the ball to remain dead, while 1,238 were opposed. Three changes were favored by approximately 4½ to 1 and included providing the penalty for failure to properly wear the required player equipment, designating it as unsportsmanlike conduct for a player to kick or throw the ball from the playing field following a touchdown, and defining participation by a replaced player or substitute as illegal participation.

**ILLEGAL USE OF THE HANDS** by the offensive team was the item most frequently mentioned as a major problem. Slightly less than 1/3 of all the respondents indicated it was a matter of concern. Goring and spearing, perennial problems, were mentioned by 2,462 respondents and this in spite of the fact that this was a point of special emphasis in 1969. In addition to being checked in Part II of the Questionnaire, this item was mentioned in comments submitted by a number of coaches and officials. Tackling out-of-bounds was a major problem in the opinion of 2,200 respondents. The next problem of major concern was that of blocking beyond the neutral zone during passes which cross the line of scrimmage and was reported by 1,416. The matter of intentionally incompleting a forward pass was reported by 1,064 men answering the questionnaire. This was another point of special emphasis in 1969 and the subject of presentations during the annual Central States Rules Interpretation Clinic. The failure of player to properly wear required equipment and gang tackling were two items which were mentioned by fewer than 1,000 respondents. The National Alliance Football Code contains ample provisions to eliminate these problem areas if the rules were properly applied. The fact that the respondents indicated these were problems is an indication the games have not been properly administered. It is the responsibility of those who supervise officials to provide adequate instruction, supervision, and evaluation which will insure the development of a greater degree of competency in officials.

#### COMMITTEE REPORTS:

During each year, and particularly during football season, the National Federation office receives a number of suggestions for improving or revising the National Alliance Code. Each proposal, along with recommendations from voting delegates and advisory members, and the items from Parts II and III of the National Alliance Football Questionnaire are categorized and assigned to one of five standing subcommittees for consideration. Before any matter of rules revision may be brought before the National Alliance Football Rules Committee, it must have been presented in one of the subcommittee meetings and approved for presentation to the committee of the whole or be included as an item on the questionnaire. Preceding the opening session of the Football Rules Committee Meeting, each subcommittee met to consider items on its agenda. The subcommittee meetings were scheduled so that subcommittee members were privileged to attend two different sessions. During the first general session, reports from the standing committees were presented to the committee of the whole and provided a wealth of material upon which to base

consideration during the voting session. During the same session, the editor reviewed the questionnaire items and the comments as submitted. Each voting delegate was reminded to submit any other items and/or minority reports to the chairman if they were to be considered with out unanimous consent. A complete copy of each of the reports from the EQUIPMENT, INJURY DATA, GAME ADMINISTRATION, RESEARCH AND STATISTICAL, AND SAFETY SUBCOMMITTEES are included in the complete minutes.

1-1: The use of four officials, a referee, umpire, linesman, and field judge, is recommended. A greater or lesser number is permitted.

1-3-3: It is recommended the line-to-gain equipment be operated on the side opposite the press box throughout the game, if there is a press box. When there is none, the location of the line-to-gain equipment will be specified by the game management at the request of the linesman.

2-3: A catch is securing possession of a loose ball (backward pass, forward pass, fumble, or kick) in flight by a player who is inbounds and after such player secures possession while in the air, his first contact with the ground must be inbounds.

3-5-3: The coverage will be revised to provide that an officials' time-out may follow a charged time-out for a coach-official conference or when a safety factor is involved.

3-7-2: Replaced players will be required to leave the field on the side of their team box.

4-2-2a: Provides that the ball continues to be alive when the place-kick holder catches the snap with one knee down and rises to run or pass.

4-3-3: When a runner goes out-of-bounds, the inbounds spot is fixed by the yardline through the foremost point of the ball at the time the runner crossed the plane of the side line.

6-4-4: After a valid fair catch signal, no member of the receiving team may advance the ball.

7-5-7: The revision eliminates counting the down as part of the penalty for an ineligible being illegally downfield during a pass which crosses the line. The penalty for this foul is 15 yards.

9-3i: Intentionally kicking or throwing the ball from the playing field following a score will result in a penalty of 15 yards.

9-4-1: A player who inadvertently contacts a goal post placed on the endline, and does not otherwise go out-of-bounds may continue to participate without penalty.

9-6-3: The penalty for a non-player being outside his team box, or walking along a boundary line, or through the field is 5 yards, unless repeated or designed to confuse opponents in which case it is 15 yards.

10-2-2: If each team fouls during a down in which there is a change of team possession, the team last gaining possession may retain the ball provided its foul was not prior to the change of possession and provided it declines the penalty for its opponent foul.

#### SIGNALS:

The committee deleted signal No. 11, which has formerly been used to indicate intentional grounding. Since intentional grounding is a form of an illegal pass, signal No. 12 identifies the foul. Action of the 1970 committee will require one new signal to be added. It will indicate first touching of a kick. The official will toss his cap to the spot of the first touching. The use of this signal will be advantageous because it would also designate the alternate spot from which the ball may be put in play.

#### CASE BOOK SITUATIONS:

Interpretations for several listed situations were requested and authorized. These will be included in the 1970 edition of the case book. A statement to be included in the foreword of the case book is to indicate that all rulings included in that publication are official interpretations and supplement the rules book. Since the case book is a supplement to the rules book, the information contained therein is officially adopted by the committee.

1. **SIMULTANEOUS CATCH:** A play will be added to ex-

plan the different aspects of simultaneous possession of a forward pass near a boundary line. New situations to emphasize the rules revisions will be included in this section.

2. **BACKWARD PASS OUT-OF-BOUNDS:** A play situation illustrating that when a backward pass is intentionally thrown out-of-bounds for the purpose of stopping the clock, the referee will be authorized to start the clock with the ready-for-play in accordance with 3-6-3.

3. **NUMBER OF OFFICIALS:** A play situation will be developed to authorize the use of different numbers of officials for administering the game. The recommendation will be that four is ideal but fewer or more are legal.

#### POINTS OF SPECIAL EMPHASIS:

Each year the National Alliance Rules Committee specifies certain areas which are to be given special attention by all those responsible for teaching football rules. The 1970 committee was no exception. One item has been specifically designated to be placed in this category for this year. **TEAM BOXES** are to be properly marked according to the rule and the officials' attention is to be directed to the requirement that team members must remain in the areas so marked.

#### GENERAL:

Editorial changes in the rules book, case book, officials manual and the rules-simplified and illustrated to correlate rules and sections were authorized by vote. The Editorial Committee was directed to revise the present language in order to increase understanding without changing the intent of the rules sections wherever feasible.

## Disqualifying Conditions

The first step in screening a youth for participation in sports is a health examination, but this pre-season medical examination is only the beginning. Health supervision of the athlete should be continuous throughout the season, with a physician present for contests in contact sports and readily available during practice sessions. If an athlete is out of play with an injury for any length of time, he should be checked by a physician before returning to practice. Advising the players on conditioning, nutrition, and other health practices is also part of the medical supervision today.

Putting together the findings of his examination and the facts of the health history, the physician makes his appraisal of a prospective player's fitness to participate. In a great majority of cases, medical approval will be forthcoming; in a few instances the physician will decide he has to say "no!" ... a most unpleasant decision to make.

Coaches and parents can be the key to successful guidance in this situation. If they continue to press for the boy to play, they will only add to his disappointment in the end. The verdict of the physician in such cases is not arrived at lightly and it is unlikely that it will be reversed. In addition, when the physician does disqualify a youth for one sport, he tries to guide him into another that holds less hazard for him.

The AMS Committee on the Medical Aspects of Sports has stated: "After all, football is a game, and no game is as important as the health or life of a youth whose condition should prohibit play." The same can be said of other sports, each of which has its own physical demands based on the nature of the activity.

Though incomplete, the conditions cited below illustrate the kind of problems with which the doctor must be concerned in evaluating a prospective player:

Absent organs such as a kidney or an eye which leaves the remaining co-organ vulnerable is a reason for restriction from contact sports.

Acute infections such as mononucleosis, hepatitis, rheumatic fever, boils, and impetigo are sufficient reasons for dis-

qualifications from all forms of athletics until recovery has occurred.

Bleeding tendencies which might be triggered by athletic injuries are cause for disqualification from any sport in which there is a risk of injury.

Convulsive disorders not completely controlled by medication are a cause for disqualification from sports in which an injury hazard exists.

Diabetes that is poorly controlled is cause for exclusion from sports until such time as proper control has been achieved.

Empysema and asthma are cause for disqualification in those sports involving endurance or prolonged exertion.

Enlarged liver is a reason for restriction with respect to contact sports because trauma to the organ could have serious consequences.

Enlarged spleen is a cause for disqualification from contact sports because injury can aggravate the condition or even rupture the organ.

Heart disease of sufficient severity to restrict activity is definitely a cause for disqualification from strenuous sports.

Hernia in any location is a reason for restriction from all but the mildest forms of sport until the condition is repaired.

Hypertension, or elevated blood pressure, with defects in structure or function of the circulatory system, is a reason for exclusion from vigorous sports.

Physical immaturity measured against other competitors should bar a boy from contact sports such as football, for his own protection.

Previous injury, such as repeated concussions, is a cause for disqualification from contact sports.

Previous surgery on the head or spine is a reason for restriction from contact sports and from others where the risks of injury are great.

Renal disease with defects in kidney structure or function is a reason for restriction from sports.

Severe myopia is a cause for disqualification from contact sports as a protection to both the individual and other participants.

Structural abnormalities of the muscular or skeletal system are cause for restriction from sports in which they would be aggravated by the activity or subject the player to unusual risk.

Tuberculosis, active or under treatment, is a disqualifying condition with respect to all sports.

Fortunately, the list of sports and games is extremely long and the range in physical demands runs from very mild to very strenuous. With the help of his physician and his coach every youth should be able to find some sport that he can play with safety and satisfaction.

National Federation and A.M.A.

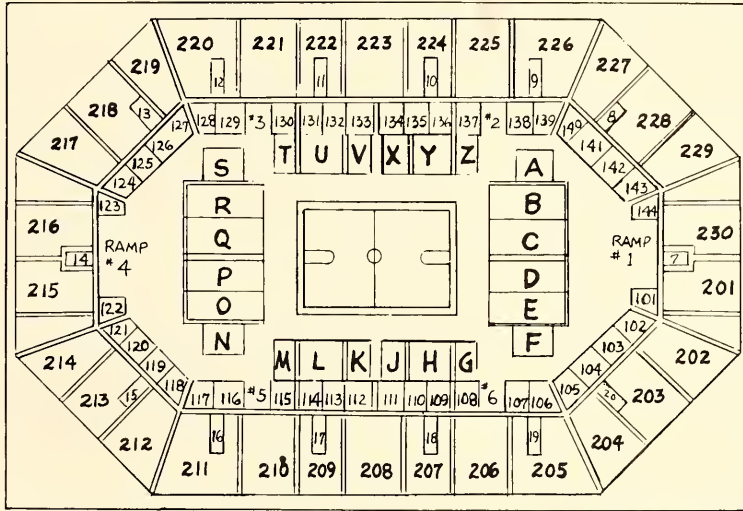
## SUPPLEMENTARY LIST OF REGISTERED BASKETBALL OFFICIALS

(List Compiled February 1)

If the telephone number is given for an official, it is the home phone number unless otherwise designated. If two numbers are given, the first number is that of the home phone.

Conley, Bobby J., 801 Russ Street, Portsmouth, Ohio, 776-6118, 354-1200  
 Grooms, Roger, 7635 Forest Road, Cincinnati, Ohio, 232-0024, 232-2772  
 Herbold, Steven C., 755 Kings Run, Cincinnati, Ohio, 542-5404, 242-2900  
 Porter, Clarence, 3855 Grace Street, New Boston, Ohio, 456-5015, 456-4555  
 Wright, Raleigh F., Broad Bottom, 432-3507

### Seating Chart of Freedom Hall



#### CROWD CONTROL

By Supt. Frank Dick, Toledo Public Schools

The schools of our country are becoming increasingly aware of the need for preventive measures to overcome crowd control behavior problems.

We in Toledo, because of our early concern, have taken a leadership position throughout the country in our attempt to control crowds at athletic contests.

Good crowd control consists of much preventive planning and organization long before problems arise. While most interscholastic contests are conducted without unpleasant incidents, it is necessary to organize all contests far in advance and to use every possible avenue in pre-planning.

It's a job, "a responsibility", that has got to be shared by the board of education, our police, our courts, our civic groups and by every respectable citizen. However, our school officials who are on the firing line, have the biggest share of the responsibility.

The responsibility for much of the student body's attitude lies with the high school principals while the athletic director should be well schooled in the principles of crowd control. The coach must realize that in time of crisis, the coach is definitely coaching more than his team. He has a responsibility not only to his athletes, but to the student body, to his administration and to the entire community in which he lives.

Toledo lost night football in 1963, suddenly and drastically, following a fight in which 31 boys were arrested.

The high school athletic program started to deteriorate because of lack of interest, especially in football and the lack of finances to sponsor a good overall program.

Three years ago we started experimenting with twi-light football games. They have proven very successful. Night basketball games are still being scheduled, however, because of the preventive measures and the firm, positive stand taken by school authorities.

In an era when it is popular to break down the establishment, we must protect our high school activities. This danger

is a real thing, and it is a national disgrace that we have these incidents happening throughout our country. High school football especially has had its share of riots - both by day and by night. The problem, however, is not one which belongs exclusively to sports. Disturbances are a national community problem. However, from my experience in Toledo, I can say to you that sports are a major arm to counteract these disturbances and a national medium to coordinate community involvement, thereby bringing the community together to solve a common problem.

A plan for maintaining control of spectators was carefully worked out by the commissioner of athletics, after consultation with myself, the safety director, chief of police, school booster clubs and school authorities.

In September at the regular monthly meeting of our high school principals association, there was great concern pertaining to the loitering of out-of-school youth on the way to and from school and on the campus proper. Shortly thereafter, we had a disturbance after one of our football games which, although was not major, it still represented a situation that had to be controlled. We used this incident to call an emergency meeting of the principals association, at which time we invited the police department. We then had a third meeting to which we invited the principals, police department and city officials along with the court officials.

I then presented a proposal for a new ordinance to the city council to handle loitering around school buildings and stadiums, and to cover any harassment of our school children either to or from school, or on the school grounds, streets, and/or sidewalks facing the school area. The city law department prepared a proposed law which would provide a fine of up to \$1,000.00, a year in jail, or both, upon conviction of assaulting, harassing, or using obscene language to school personnel while on school property, or to and from school, stadiums, or gymnasiums.

This ordinance, under Section 1 of the Toledo Municipal Code, was an entirely new ordinance as we had research out that all existing ordinances had loopholes in them.

This ordinance was passed and the city juvenile judges



In Stock for  
Immediate Delivery

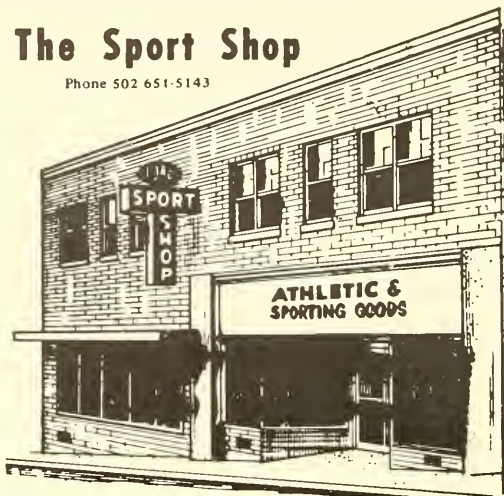
# The Sport Shop

Phone 502 651-5143

## First-aid Supplies

A.B.A. Cold Tablets  
Adhesive Tape  
Alcohol  
Am Caps  
Analgesic Liniment  
Ankle Brace  
Ankle Weights  
Ankle Wraps  
Aspirin  
Athletic Liniment  
Athletic Soap  
Ath-O-Gesic  
Atomic Balm  
Atomic Rub-Down  
Band Aid  
Batter's Rosin  
Bike Tape  
Black Magic  
Body Powder  
Butterfly Tablets  
Carbonate Stick  
Cotton  
Cotton Applicators  
Cramergetic  
Dextrotabs  
Dial-A-Tab

Dry Smelling Salt  
Elastic Wraps  
Elbow Pads  
Felt  
Firm Grip  
First Aid Kits  
Foam Rubber  
Foot Ointment  
Foot Powder  
Foot Solution  
Fung-o-spray  
Gauze  
Glare Guard  
Instant Ice  
Iso-Quin  
J & J Cream  
J & J Tape  
Kleen Ball  
Knee Braces  
Knee Pads  
Tape  
Tape Remover  
Tongue Depressors  
Towels  
Training Kits  
Tuf-Skin  
Vitamins



106-110 North Race Street  
Glasgow, Kentucky 42141

Write for 1969-70 school catalogue

have really "cracked down" on juvenile offenders. This word gets around quickly to potential delinquents. Since the first incident in September, we have not had an incident reported at a football or basketball game this year.

We give all our school officials guidelines to follow in a brochure entitled, "Crowd Control Procedures". This includes definite assignments given to the principal, the athletic directors, the coaches, the team, the cheerleaders, and the game officials. We then hold these people responsible to fulfill these guidelines.

Public education must face up to its responsibilities in the area of crowd control. Educators must establish desirable standards for spectator behavior and then encourage the adoption of these standards by their students and the community at large.

### SUPPLEMENTARY LIST OF REGISTERED WRESTLING OFFICIALS

Cox, William B., 1600 Ashwood Drive, Lexington, 266-4466  
Givens, C. Michael, 704 Woodland Avenue, Lexington, 258-9000, Ext. 77271  
Konvalinka, John P., 215 Mills Drive, Clarksville, Tenn., 648-2695  
Scholtz, Randolph F., Box 560, Centre College, Danville, 236-6178  
Terry, Bob, 128 Blue Ridge Road, Anchorage, 245-0006, 245-4101

### BASKETBALL QUESTIONS

(Continued from Page One)

disregarded. If the try is not successful, A1 is awarded a substitute throw for the violation by B1.

31. Play: Does Rule 2-10 provide for the delayed calling of infractions?

Ruling: No. Rule 2-10 makes provision for only either the correction of an error in the application of a penalty for a called infraction (foul or violation) or (e) for erroneously counting or cancelling a score. Rule 2-10 does not affect nor modify the time at which infractions (either fouls or violations) shall be called by the officials. The five provisions of 2-10 only authorize correction when there has been an error in the administration of a penalty or recording a score.

For Example: A substitute wearing number "2" reports to the scorer and is beckoned onto the court by an official. After the ball has become alive and then been declared dead, it is discovered that the recently admitted player is wearing an illegal number (2). May the official penalize for the illegal number if he does so before the ball becomes alive for the second time?

Ruling: No, in order that the penalty be assessed it must be done before the clock starts. However, if the player leaves the game and subsequently reenters, he is then subject to a technical foul if the infraction is discovered before the clock starts.

32. Play: A1 is making a throw-in and touches the sideline boundary with his foot but it does not break the plane between the court and the inside edge of the 2-inch line boundary. Comment: The rules application in this situation is the same for the 2-inch boundary as it is for the 8-inch boundary or a 3-foot belt. Care is taken here to point out that the reference is to a throw-in, that is, with the action from outside the court to inside the court. The same principle applies to bringing the ball from back court to the front court. It might be well to note in relating to similar situations that the free thrower may not touch the line with his toe during a free throw because the plane is the free throw line edge the furthest from the backboard. Similarly, the players who line up on the free throw lane may not break the plane on the outside edge of the lane boundary. To do so is a violation. The court diagram, as included in the rules provides support for these interpretations.

**IF YOU ARE NOT USING OUR STUDENT COVERAGE NOW, A FEW MINUTES SPENT IN COMPLETING AND COMPARING THE CHART BELOW WILL SHOW WHETHER YOU SHOULD CONSIDER OUR POLICY FOR THE COMING YEAR.**

	PRESENT POLICY	OUR POLICY
1. Accident Medical Expense Benefit – Maximum		\$8,000
2. Limit for calls at doctor's office?		NO
3. Limit for X-rays or negative X-rays?		NO
4. Limit for Dental Expense, per tooth?		NO
5. Scheduled Surgery Benefits?		NO
6. Private Tutoring Benefit?		YES
7. Benefits payable regardless of other insurance?		YES
8. Coverage available on 24-hour basis?		YES
9. Available to employees?		YES
10. Does policy cover Athletics, except Football?		YES
11. Is Football Coverage available?		YES
12. Is policy approved by KHSAA?		YES
13. Is Claim Service prompt and is an interest shown in your special problems?		YES

NOTE: Items 2 through 5 provide for payment of reasonable and customary charges for services rendered.

**IF YOU WOULD LIKE TO KNOW MORE ABOUT THESE COVERAGES, WE WILL BE HAPPY TO CALL ON YOU. JUST LET US KNOW.**

*The Kingden Company* GENERAL AGENT

W. E. KINGSLEY

J. E. McCREARY, Mgr.  
Life Department

CHARLES C. PRICE

121-123 LAFAYETTE AVENUE  
P. O. BOX 7100

LEXINGTON, KY. 40502

PHONE 254-4086

# K. H. S. A. A. TOURNAMENT DIRECTORS

District and Regional Tournament Directors can get all of their supplies and needs to run a tournament from Hunt's. We have the merchandise listed below in stock for immediate shipment. Call or write us your needs.

## BASKETBALLS

Get the feel of a basketball same as will be used in the State Tournament in Louisville, and in your District or Regional Tournament. We have all brands.

## ADMISSION TICKETS

Complete stock of admission tickets, 2,000 tickets to the roll numbered consecutively. Printed ADULT, STUDENT, and ADMIT ONE. \$1.50 per roll of 2,000.

## TROPHIES AND AWARDS

We can take care of your Sportsmanship trophies, individual charms for All-Star teams, etc. Our stock is complete and we can engrave in our store and ship to you at once.

## ACCESSORIES

Nets, scorebooks, first-aid supplies, whistles, stopwatches, timers' horns, powdered rosin, bath towels, shoe laces, colored top sweat socks, carry-all bags. All of this merchandise in stock for at once delivery.

## BANKS AND GOALS

We have a complete stock of fan-shaped steel, fan-shaped and rectangular glass backboards complete with goals and nets in stock for at once delivery. A phone call will get them off to you at once.

## FAIR-PLAY ELECTRIC BASKETBALL SCOREBOARDS

We have IN STOCK the Fair Play Tick-A-Way Scoreboard ready for immediate shipment. A call will get one to your gymnasium before tournament time.

Turn all of your needs over to us. We will be glad to handle them for you. ROY BOYD, JIM MITCHELL, DICK STONE, EDDIE THOMIS, or C. A. BYRN, JR. are always ready to assist you in every way possible.

If you want the BEST QUALITY and the BEST SERVICE contact HUNT'S

## HUNT'S ATHLETIC GOODS CO., INC.

CH 7-1941 — PHONES — CH 7-1942

MAYFIELD, KENTUCKY

PHONE 459-6366 LOUISVILLE, KY.



**'WE SHIP THE DAY YOU BUY'**

