

9-1-1970

# The Kentucky High School Athlete, September 1970

Kentucky High School Athletic Association

Follow this and additional works at: <http://encompass.eku.edu/athlete>

---

## Recommended Citation

Kentucky High School Athletic Association, "The Kentucky High School Athlete, September 1970" (1970). *The Athlete*. Book 162.  
<http://encompass.eku.edu/athlete/162>



This Article is brought to you for free and open access by the Kentucky High School Athletic Association at Encompass. It has been accepted for inclusion in The Athlete by an authorized administrator of Encompass. For more information, please contact [Linda.Sizemore@eku.edu](mailto:Linda.Sizemore@eku.edu).



# THE KENTUCKY





# High School Athlete



## K.H.S.A.A. SCHOOL FOR FOOTBALL OFFICIALS



Above are area representatives who attended the School for Football Officials, held in Lexington on August 8. They are (Left to Right) Front Row—Clyde Parsley, Providence; Joe Russell, Russellville; Bill Mordica, Ashland; Howard Moss, Paducah. Second Row—Assistant Com. Billy V. Wise, School Director; Eli Logan, Hazard; Bernard Johnson, Lexington; Carroll Elliott, Elizabethtown; Ray Canady, Barbourville. Third Row—Frank Mereke, Louisville; Tom Murray, Fort Mitchell; Paul Walker, Bowling Green; E. B. May, Jr., Prestonsburg.



Official Organ of the  
**KENTUCKY HIGH SCHOOL ATHLETIC ASSOCIATION**



SEPTEMBER, 1970

## Football Districts and Regions

The football districts and regions for 1970 are as follows:

### Class AAA

#### Region I

Atherton, Bishop David, Central, DeSales, duPont Manual, Flaget, Iroquois, Male, Shawnee, St. Xavier, Trinity

#### Region II

District 1—

Butler, Doss, Fairdale, Pleasure Ridge Park, Southern, Jesse Stuart, Valley, Western

District 2—

Ballard, Durrett, Eastern, Fern Creek, Jeffersontown, Marion C. Moore, Seneca, Thomas Jefferson, Waggener, Westport

### Class AA

#### Region I

District 1—

Bowling Green, Caldwell County, Christian County, Franklin-Simpson, Hopkinsville, Lone Oak, Mayfield, Paducah

District 2—

Daviess County, Henderson, Henderson County, Madisonville-North Hopkins, Ohio County, Owensboro, Owensboro Catholic, Union County

#### Region II

District 1—

Breckinridge County, Bullitt Central, Elizabethtown, Fort Knox, LaRue County, Marion County, Meade County, Nelson County, North Hardin, Oldham County, Shelby County

District 2—

Danville, Henry Clay, Jessamine County, Lafayette, Somerset, Woodford County

#### Region III

District 1—

Boone County, Boyd County, Campbell County, Conner, Covington Catholic, Dixie Heights, Highlands, Holmes, Lloyd Memorial, Newport, Newport Catholic, Paul Blazer, Russell, Simon Kenton

District 2—

Bourbon County, Bryan Station, Franklin County, George Rogers Clark, Harrison County, Madison Central, Tates Creek

#### Region IV

District 1—

Bell County, Corbin, Cumberland, Evarts, James A. Ca-wood, Knox Central, Laurel County, Middlesboro, Russell County, Wayne County, Whitley County

District 2—

Belfry, Hazard, Leslie County, M. C. Napier, Prestonsburg, Whitesburg

### Class A

#### Region I

District 1—

Crittenden County, Fort Campbell, Fulton, Fulton County, Heath, Murray, North Marshall, Reidland, Russellville, Todd Central, Trigg County

District 2—

Allen County, Butler County, Campbellsville, Caverna, Cumberland County, Glasgow, Greensburg, Metcalfe County, Tompkinsville, Warren Central, Warren East

#### Region II

District 1—

Bardstown, Eminence, Henry County, Kentucky Military Institute, Louisville Country Day, Shelbyville, Washington County

District 2—

Anderson, Berea, Boyle County, Burgin, Estill County, Frankfort, Garrard County, Georgetown, Harrodsburg, Kentucky School for the Deaf, Madison, Mercer County, Sayre, Scott County, Stanford

#### Region III

District 1—

Beechwood, Bellevue, Carroll County, Catlettsburg, Dayton, Fairview, Ludlow, McKell, Owen County, Raceland, Wurtland

District 2—

Bath County, Fleming County, Lewis County, Maysville, Millersburg Military Institute, Montgomery County, Morgan County, Mt. Sterling, Nicholas County, Paris, Rowan County

#### Region IV

District 1—

Harlan, Lynch, Lynn Camp, Mt. Vernon, Pineville, Williamsburg

District 2—

Elkhorn City, Fleming-Neon, Jenkins, Johns Creek, Louisa, Mullins, Paintsville, Pikeville, Virgie, Wheelwright

## FILMS

The films listed below are in the Film Library of the University of Kentucky College of Education. The code letters, "e, j, s, c, a," refer to elementary, junior high, senior high, college and adult audiences who may enjoy the particular film listed. The rental prices shown do not apply to schools which use one of the special subscription service plans offered by the Bureau of Audio-Visual Material.

### Football

**BALL HANDLING IN FOOTBALL, j-s-c-a, 1 reel, \$2.00.**

Fundamentals of ball handling are stressed; stance, grip, "feel" of the ball, fingertip control adjustment before throwing or kicking, receiving passes from center or from a back, catching passes and punts, ways of carrying ball, and changing from one hand to another. Game shots are presented, using slow motion and stop action techniques, and superimposed animation to illustrate principles.

**BLOCKING IN FOOTBALL, j-s-c, 1 reel, \$2.00.**

Fundamentals of good blocking are taught in this film; position, speed, drive, follow-through, timing, and body control. Describes shoulder and body blocks, demonstrating several varieties of these. Importance of good physical condition, practice, and experience are emphasized. Special photography used to illustrate different points.

**FOOTBALL BY THE RULES, e-j-s-c-a, 3 reels, (30 min.), color, \$1.00.**

The film will give the viewer a better understanding and a keener appreciation of football. Modern photography presents many play situations that portray the guidelines used by officials in making judgment decisions so necessary in this sport.

**KNOW YOUR FOOTBALL, e-j-s-c-a, 3 reels (30 min.), color, \$1.00.**

Gives a visual approach to the written rules. Play situations challenge the viewer's knowledge and clarify many rules interpretations. Recommended for fans, officials, coaches and players.

**TACKLING IN FOOTBALL, j-s-c-a, 1 reel, \$2.00.**

Tackling properly is shown as the result of application of certain fundamentals: good physical condition, speed, body placement, drive, sure grip, timing, and body control. Shoulder and cross body tackles are demonstrated in various ways, with special instruction for safety and means of reducing shock.

**THIS IS FOOTBALL, e-j-s-c-a, 3 reels, color, \$1.00.**

Centered around the four S's—science, speed, skill and safety. Demonstrations cover basic rules that will aid the official, coach, players, and fan. Play situations are used to establish standards.

### Attention, Principals!

A list of registered football officials appears in this issue of the ATHLETE. Principals and coaches should study the current list to determine whether or not all officials with whom contracts have been signed have registered this fall. Supplementary lists of officials will appear in subsequent issues of the magazine. By-Law 22 provides that member schools shall use registered officials in all football, basketball and baseball games, and that failure to comply with this regulation makes the home school liable for suspension. If there is any question about registration, the official should be asked to present his card.



# *The Kentucky High School Athlete*

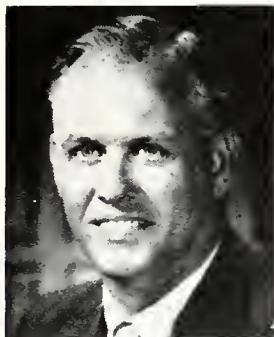
*Official Organ of the*

*Kentucky High School Athletic Association*

VOL XXXIII—No. 2

SEPTEMBER, 1970

\$1.00 Per Year



**Don Davis**  
President



**W. H. Crowdus**  
Vice-President

Assistant Superintendent Don Davis of the Kenton County Schools was elected President of the Board of Control at the summer meeting of the directors, held on August 1, 1970. W. H. "Johnie" Crowdus principal of the Franklin Junior High School, was elected Board Vice-President.

Mr. Davis, a graduate of the Dayton High School, holds degrees from Cincinnati and St. Xavier Universities. A college letterman in football, basketball, and baseball, he has coached these sports in high school as well as track and swimming.

Mr. Davis is affiliated with numerous professional educational organizations. He is a Past President of the Bellevue Rotary Club, a charter member of the Campbell County Youth Advisory Committee, and a Past Chairman of the Bellevue Youth Advisory Committee. He was in the service during the 1941-46 period, being discharged with the rank of First Lieutenant in the Coast Artillery Anti-Aircraft. Since that time teaching and coaching assignments have been at Wellston (Ohio) High School, Dayton High School, and Holmes High School. From 1957 to 1962 Mr. Davis was Principal of the Bellevue High School, and he was named Assistant Superintendent of Kenton County Schools in 1962. He is married to the former Mary Louise Byland. They have four children, one boy and three girls.

Mr. Crowdus was a member of the Board during the 1954-62 period, and was Board President in 1961-62. A native of Franklin, he received degrees from Western Kentucky University and Indiana University.

From 1935 to 1942 Mr. Crowdus worked at Western as trainer and assistant in the Physical Education Department. He served in the U. S. Navy during the 1942-45 period. In Franklin Junior High School he started teaching in the field of Health and Physical Education. He became principal of the school in 1953. He has coached high school football, basketball and golf.

In 1942 Mr. Crowdus married Miss Ina Bledsoe of Hiseville. He is a past chairman of the Franklin Methodist Church Official Board and is current associate district layleader of the Bowling Green district. He is a past president of the Franklin

Rotary Club. In May of 1961 he received from Radio Station W.K.A.Y. at Glasgow a plaque for being the Southern Kentuckian who had done the most for sports in 1960-61. He is chairman of the new Franklin-Simpson Memorial Hospital Board. He is a member of numerous professional organizations.

## **New Regulations**

The 1970 Delegate Assembly wrote three changes into the regulations of the Kentucky High School Athletic Association. These were:

1. Units of credit were substituted for studies in By-Law 3.
2. Units of credit was substituted for studies in By-Law 5-4.
3. K.H.S.A.A. annual dues now become due on September 1.

## **Minutes of Board Meeting**

The Board of Control of the Kentucky High School Athletic Association met at Kenlake Hotel, Kentucky Lake State Park, on Saturday morning, August 1, 1970. The meeting was called to order by retiring President Ralph C. Dorsey at 9:30. Present were Board members J. C. Cantrell, Morton Combs, W. H. Crowdus, Don Davis, James T. Dotson, Tom Mills, Richard Vincent, and Roy L. Winchester; Commissioner Theo. A. Sanford, Assistant Commissioners J. B. Mansfield and Billy V. Wise, and former Board member Foster J. Sanders. The invocation was given by Mr. Sanders.

Tom Mills moved, seconded by Richard Vincent, that the reading of the minutes of the June 4th meeting be waived, since the members of the Board had received copies of these minutes. The motion was carried unanimously.

Mr. Dorsey welcomed to membership on the Board the two new members, Messrs. Cantrell and Winchester. He and Mr. Sanders made appropriate remarks of appreciation concerning their eight-year tenure on the Board of Control, pledging their continued support to the program of the Association.

President Dorsey stated that the next order of business was the election of President and Vice-President of the Board. Morton Combs moved, seconded by James T. Dotson, that Don Davis and W. H. Crowdus be elected respectively President and Vice-President of the Board of Control by acclamation. The motion was carried with Messrs. Davis and Crowdus not voting.

Before he relinquished the chair, Mr. Dorsey spoke at length concerning the expanding program of the Association, making several suggestions for future consideration by the Board.

In accepting the presidency of the Board, Mr. Davis pledged to do his best in attempting to improve the program of the Association. He and Mr. Crowdus made appropriate remarks concerning their new duties as Board president and vice-president.

The Commissioner made a report on Association receipts and disbursements during the 1969-

(Continued on Page Twelve)

Published monthly, except June and July, by the  
Kentucky High School Athletic Association  
Office of Publication, Lexington, Ky. 40501

Second class postage paid at Lexington, Kentucky  
Editor THEO. A. SANFORD  
Assistant Editor ----- J. B. MANSFIELD  
Assistant Editor -- BILLY V. WISE  
Assistant Editor -- ----- JEAN AUSTIN

Lexington, Ky.  
BOARD OF CONTROL  
President Don Davis (1967-1971), Fort Thomas  
Vice-President W. H. Crowder (1968-1971), Franklin  
Directors—J. C. Cantrell (1970-1974), Valley Station;  
Morton Combs (1968-1972), Carr Creek; James T. Dotson  
(1968-1972), Pikeville; Lee T. Mills (1969-1973), Frankfort;  
Richard Vincent (1969-1973), Morganfield; Roy L. Win-  
chester (1970-1974), Bethlehem.  
Subscription Rate \$1.00 per year

### *From the Commissioner's Office*

#### Attention, Officials!

The attention of all registered K.H.S.A.A. football, basketball and baseball officials is called to By-Law 29, Section 9, which provides that the officials shall be supplied with an emblem which he shall wear on his shirt or sweater. This rule will be enforced strictly in 1970-71 as it has been in recent years. The emblem is to be worn on the left shoulder shirt sleeve approximately one and one-half inches below the shoulder seam. The Approved or Certified bar should be worn below the emblem. Failure to wear the emblem will make an official liable for suspension from the Officials' Division of the Association.

Recommended uniforms are as follows:

Football—black and white striped shirt (long or short sleeves), black baseball cap with white piping, white knee pants, black belt, black stockings, black shoes and laces;

Basketball—black and white striped shirt (short sleeves, long sleeves by special permission), black trousers, black belt, black shoes and laces;

Baseball—navy blue or black trousers, black athletic leather shoes (not football shoes), navy blue coat or jacket, navy blue shirt if working coatless, white shirt if wearing coat or jacket, white shirt on bases if all base umpires are dressed the same, umpire's navy cap (no player caps), indicator and mask of choice, inner protector or inflated protector (inflated type if official desires to purchase), black belt, black shoe laces, black tie with white shirt.

#### Basketball Clinics

The 1970-71 required rules meetings for basketball officials and coaches will be conducted by Assistant Commissioner Billy V. Wise. Players and other members of the school's coaching staff are invited to attend the clinics. Basketball coaches are urged to bring their scorers and timers to the meetings. The dates and sites of the meetings are as follows:

- October 5, Somerset High School, 7:30 P.M.
- October 6, Bell County High School, Pineville, 7:30 P.M.
- October 7, Hazard High School, 7:30 P.M.
- October 8, Prestonsburg High School, 7:30 P.M.
- October 9, Lee County High School, Beattyville, 7:30 P.M.
- October 12, Morehead State University, 7:30 P.M.
- October 13, Paul G. Blazer High School, Ashland, 7:30 P.M.

- October 14, Mason County High School, Maysville, 7:30 P.M.
- October 15, Holmes High School, Covington, 7:30 P.M.
- October 19, Henderson High School, 7:30 P.M.
- October 20, Paducah Tilghman High School, 7:30 P.M.
- October 21, Murray State University, 7:30 P.M.
- October 22, Hopkinsville High School, 7:30 P.M.
- October 26, Reservoir Hill, Rec. Center, Bowling Green, 7:30 P.M.
- October 27, Elizabethtown High School, 7:30 P.M.
- October 28, Kentucky Hotel, Louisville, 7:30 P.M.
- October 29, Transylvania College, Lexington, 7:30 P.M.

#### New Basketball Film

A new basketball film, BASKETBALL BY THE RULES, has been produced by the National Federation of State High School Athletic Associations. The film was released in July of this year. Three prints of the film (16 mm, twenty-eight minutes, sound film in color) have been secured by the K.H.S.A.A. and placed on loan with the Film Library, College of Education, University of Kentucky.

The film is designed to provide the viewer with a better understanding of the rules and a finer appreciation of basketball as played at the interscholastic and intercollegiate levels. Through the use of slow motion photography, stop action and instant replay, colorful play situations illustrate the guidelines used by officials in making those tough judgment decisions that constantly occur in basketball.

BASKETBALL BY THE RULES presents the more pertinent areas of the rules code in an entertaining and informative manner. The screening principles are explained in scenes showing the blind, visual, and moving screens. A blocked field goal, the closely guarded player and the mid-court restrictions are shown as each applies to a held ball situation.

BASKETBALL BY THE RULES shows the action governed by the center division line such as a legal return to the back court, a return following a jump ball or a throw-in, and the floor position of player in the air. The jump ball restrictions in regard to the jumping circles, the jumpers and the non-jumpers are illustrated.

The film explains legal and illegal contact between players by showing incidental contact and pointing out the player responsible for illegal contact. Violations of the free throw rule by the defense and offense are explained along with the boundary lane and space restrictions. Illustrated in the film are situations involved in timing such as the status of the ball when the clock stops and starts, when the ball becomes alive and dead, and when there is a try-in-flight as a period ends.

A portion of the picture is devoted to the mechanics of officiating. The positions of the lead and trail officials are outlined. The signals for violations and fouls are given along with other information to help the referees and enlighten the fans.

#### Correction

In the 1970-71 booklet, Green County was listed incorrectly as being in Basketball District 20. Green County is in District 18.



## Officials' Ratings on Sportsmanship of K.H.S.A.A. Member Schools in Basketball, 1969-70

(Continued from August ATHLETE)

SCHOOL	COACH				OTHER SCHOOL OFFICIALS				CROWD				TEAM			
	E	G	F	P	E	G	F	P	E	G	F	P	E	G	F	P
Nancy	40	8	2	2	46	5	1	0	41	7	3	1	35	12	3	2
Nelson County	40	7	2	0	39	9	0	0	31	16	0	1	32	15	1	0
Newport	39	26	4	1	54	15	1	0	31	31	7	1	28	28	11	3
Newport Catholic	45	16	0	1	46	15	1	0	22	28	10	1	33	25	4	0
Nicholas County	43	13	4	1	50	8	2	1	39	14	2	6	46	12	3	0
North Hardin	31	10	1	1	30	12	1	0	31	11	1	0	31	12	0	0
North Marshall	34	13	1	0	33	14	1	0	29	18	0	1	30	15	1	2
Oakdale Christian	23	7	1	0	28	4	1	0	26	7	1	0	18	10	5	2
Ohio County	20	12	5	6	29	12	2	0	14	19	5	5	26	9	6	2
Oldham County	47	19	2	3	50	18	3	0	39	22	7	3	46	22	2	1
Olive Hill	60	5	0	0	62	3	0	0	47	16	2	0	52	12	1	0
Olmstead	31	4	0	1	31	5	0	0	26	10	0	0	25	10	1	0
Oneida Institute	56	11	7	6	68	7	4	1	58	16	4	2	56	17	4	3
Owen County	59	8	0	1	59	5	2	2	47	19	1	1	52	13	2	1
Owensboro	40	8	5	1	43	6	1	0	34	11	1	1	28	21	3	2
Owensboro Catholic	35	16	1	1	42	9	0	0	33	15	2	1	35	18	0	0
Owsley County	39	8	2	4	45	5	3	0	33	9	3	3	34	11	4	4
Paducah Tilghman	32	23	2	0	38	19	0	0	32	21	2	2	34	19	1	3
Paintsville	43	3	1	1	42	5	1	0	40	7	0	1	37	9	1	1
Paris	51	9	2	0	50	11	0	0	51	10	1	0	52	10	0	0
Park City	29	16	2	3	39	8	1	1	34	13	2	0	34	13	3	0
Paul G. Blazer	42	12	0	1	42	12	1	0	37	15	3	0	41	13	1	0
Pendleton	63	18	0	0	73	8	0	0	51	28	2	0	56	22	3	0
Phelps	29	4	1	0	29	4	1	0	25	7	2	0	26	6	2	0
Pikeville	35	12	2	0	43	5	1	0	37	10	1	1	38	9	2	0
Pine Knot	33	12	4	12	45	11	5	0	33	20	6	2	33	20	6	2
Pineville	36	15	4	1	36	16	4	0	35	17	3	1	30	20	6	0
Pleasure Ridge Park	39	18	6	2	50	12	2	1	43	18	2	2	32	26	5	2
Portland Christian	23	18	1	0	29	13	0	0	22	19	1	0	22	15	4	1
Powell County	64	18	3	0	69	16	0	0	65	16	2	2	69	11	4	1
Prestonsburg	29	7	2	0	31	7	0	0	28	7	2	1	28	9	1	0
Prichard	49	11	1	0	49	11	0	0	40	20	1	0	46	13	2	0
Providence	40	21	5	0	44	22	0	0	33	30	3	0	30	29	6	1
Pulaski County	20	10	3	6	32	7	0	0	27	8	2	2	32	7	0	0
Raceland	25	15	6	7	37	12	2	1	27	18	7	1	24	19	5	5
Red Bird	33	0	0	0	31	2	0	0	29	4	0	0	29	4	0	0
Reidland	29	16	5	2	32	11	7	2	25	17	7	3	25	17	7	3
Riverside Christian	41	4	1	0	38	7	0	0	30	9	4	3	31	10	2	3
Rowan County	30	9	1	2	33	7	0	1	32	6	2	1	34	6	1	1
Russell	33	11	1	0	35	10	0	0	26	18	1	0	29	16	0	0
Russell County	24	7	2	1	25	8	1	0	22	8	3	1	23	10	1	0
Russellville	30	7	2	3	33	5	1	3	27	10	3	2	26	9	5	2
Sacramento	42	12	2	5	43	15	1	2	34	20	5	2	35	21	1	4
St. Augustine	26	23	0	0	25	24	0	0	20	28	1	0	23	25	0	1
St. Camillus	19	6	0	0	16	9	0	0	17	7	1	0	16	3	1	0
St. Catherine	38	9	2	0	38	10	0	0	34	14	0	0	32	16	1	0
St. Charles	32	11	1	1	33	10	2	0	32	11	1	1	31	11	3	0
St. Henry	58	24	1	0	65	16	2	0	41	39	3	0	44	38	1	0
St. Mary	52	8	2	0	54	7	0	0	49	13	0	0	50	10	2	0
St. Patrick	43	5	2	0	37	12	1	0	32	16	2	0	32	13	2	3
St. Romuald	31	6	0	0	31	6	0	0	29	8	0	0	31	6	0	0
St. Thomas	57	22	2	2	65	17	0	1	49	28	4	2	55	26	2	0
St. Xavier	50	23	0	1	54	18	2	0	43	28	2	1	44	29	0	1
Salyersville	32	8	3	4	37	9	1	0	28	12	2	5	29	11	4	3
Sandy Hook	44	7	0	0	44	6	1	0	37	12	2	0	36	13	1	1
Sayre	33	17	4	1	43	12	0	0	33	13	3	1	35	20	0	0
Scott County	37	5	2	2	41	4	0	1	39	7	0	0	40	5	1	0
Scottsville	25	18	2	0	21	15	5	4	19	24	2	0	28	15	2	0
Sedalia	28	30	1	0	20	29	0	0	16	28	2	3	12	32	4	1
Seneca	33	19	6	2	43	15	1	1	29	29	0	2	28	26	3	3
Shawnee	37	10	4	0	38	12	1	0	31	16	4	0	26	20	1	4
Shelby County	44	16	5	1	54	12	0	0	42	18	3	3	46	20	0	0
Shelbyville	33	19	2	2	44	10	0	0	40	15	1	0	39	14	2	1
Shepherdsville	33	3	1	1	34	4	0	0	31	6	0	1	32	4	2	0
Shopville	27	16	3	1	33	12	2	0	29	15	3	0	23	16	5	3
Silver Grove	47	23	2	2	53	18	0	2	37	32	2	3	35	33	2	4
Simon Kenton	32	16	0	1	39	10	0	0	25	18	5	1	28	19	2	0
Somerset	36	6	2	3	40	6	0	0	34	12	0	1	36	9	1	1
South Hopkins	22	23	7	2	33	20	0	0	24	30	1	1	23	24	3	6
South Marshall	31	10	1	5	35	9	1	1	23	15	4	0	33	14	0	0
Southern	45	27	2	0	52	21	1	0	40	31	2	1	42	29	3	0
Stanford	33	8	0	0	32	9	0	0	26	13	1	1	27	12	2	0
Symsonia	39	20	0	2	44	16	1	0	30	26	4	1	35	22	4	0
Tates Creek	49	13	2	0	53	11	0	0	45	19	0	0	48	15	1	0
Taylor County	39	12	4	2	41	13	2	1	33	21	2	1	34	20	3	0
Taylorville	35	11	5	2	40	9	2	0	35	13	5	0	38	11	4	0
Temple Hill	30	15	5	1	40	9	2	0	39	9	3	0	39	10	2	0
Thomas Jefferson	35	23	2	2	33	25	0	4	23	35	3	1	26	32	3	1
Todd County Central	19	24	3	5	24	23	3	1	16	29	3	3	12	30	5	4
Tollesboro	47	10	0	2	58	14	0	0	37	15	4	3	41	15	2	1
Tompkinsville	31	18	2	2	32	20	0	0	27	25	0	1	27	24	1	1
Trigg County	52	11	3	0	52	10	1	1	42	18	4	2	41	18	5	2
Trimble County	39	18	3	0	41	16	1	2	33	20	4	2	36	21	3	0

SCHOOL	OTHER SCHOOL															
	COACH				OFFICIALS				CROWD				TEAM			
	E	G	F	P	E	G	F	P	E	G	F	P	E	G	F	P
Trinity (Louisville)	45	28	3	0	51	24	1	0	42	33	0	1	45	25	5	1
Trinity (Whitesville)	30	11	1	1	30	13	0	0	27	15	1	0	26	15	1	1
Union County	28	14	0	4	31	13	0	2	24	15	2	5	26	17	0	3
Univ. Breckinridge	41	10	4	0	50	5	0	0	37	15	2	1	36	16	3	0
Univ. Bowling Green	25	13	6	2	36	9	1	0	33	12	1	0	29	16	1	0
Valley	32	15	3	0	43	6	1	0	34	15	1	0	34	14	1	1
Virgie	45	6	0	0	50	1	0	0	38	11	1	1	40	8	2	1
Waggener	33	23	0	0	42	13	1	0	30	23	3	0	36	19	1	0
Walton-Verona	61	12	2	1	64	11	1	0	48	27	1	0	51	25	0	0
Warfield	45	17	1	2	44	16	5	0	40	20	5	0	41	19	5	0
Warren Central	31	20	2	0	35	17	0	0	31	21	1	0	34	19	0	0
Warren East	33	10	3	4	34	7	5	4	33	11	4	2	39	9	1	1
Washington Co.	33	9	3	0	33	10	2	0	30	12	2	1	29	11	4	1
Wayland	38	2	2	2	38	4	1	1	36	3	4	1	36	4	2	2
Wayne County	28	7	9	3	37	5	2	3	30	13	3	1	28	15	4	0
Webster County	37	12	4	6	41	15	4	0	31	19	6	3	29	24	5	1
West Hardin	31	20	4	3	38	20	0	0	36	18	3	1	31	23	2	2
West Hopkins	32	20	1	0	31	22	0	0	27	24	2	0	27	22	2	2
Western (Louisville)	37	24	2	1	45	18	1	0	31	31	2	0	34	30	0	0
Western (Sinai)	38	16	2	2	48	9	0	0	33	21	4	0	31	22	4	1
Westport	32	16	2	1	35	14	2	0	29	19	2	1	30	15	5	1
Wheelwright	31	6	2	0	35	3	1	0	33	4	2	0	35	4	0	0
Whitesburg	36	4	0	0	31	9	0	0	27	11	2	0	28	9	3	0
Whitley County	50	13	2	1	46	17	3	0	35	23	6	2	36	21	7	2
Williamstown	34	19	2	0	38	11	6	0	25	21	9	0	24	22	9	0
Williamstown	50	8	1	0	50	8	1	0	36	22	0	1	42	16	1	0
Wingo	26	18	1	1	33	13	0	0	21	15	4	6	28	14	3	1
Wolfe County	41	11	1	2	42	13	0	0	38	9	4	4	42	10	4	0
Woodford County	47	11	3	5	55	10	1	0	48	15	3	0	50	14	2	0
Wurtland	28	13	7	5	36	14	1	2	22	22	6	3	31	19	0	3

## Schools' Ratings on Basketball Officials

The following ratings were received on basketball officials registered with the K.H.S.A.A. during 1969-70. The numbers following each name respectively represent the numbers of Excellent, Good, Fair, and Poor ratings given to the official.

Abshire, Ronnie E., 0-1-0-0; Ackermann, Joe F., 0-1-1-1; Acton, Claude J., 0-1-0-0; Adams, James C., 7-10-3-3; Adams, Richard W., 3-0-1-0; Alexander, Howard, 4-1-0-1; Alexander, Rex E., 1-2-1-0; Alexander, Ronnie G., 0-1-3-0; Allen, James D., 3-1-2-0; Allen, Nelson R., 14-6-0-0; Allen, Yvon, 0-15-0-0; Allgood, Russell L., 2-6-0-1; Anders, Raleigh, 4-7-2-0; Anderson, Luther S., 0-3-0-0; Archibald, Larry T., 6-5-3-2; Atwell, Darryl, 0-5-1-0; Bailey, Gaar J., 0-1-0-0; Bankemper, Thomas, 0-9-2-0; Barker, Walter D., 5-2-1-0; Barton, Leon, 0-0-0-1; Bates, Bob, 1-5-0-1; Beam, Joseph F., 2-13-0-1; Beck, Robert E., 0-1-0-0; Bell, Clarence T., 11-11-4-1; Bennett, Gene, 4-1-0-0; Benzinger, Joseph, 5-4-2-2; Bersaglia, Ron, 1-8-0-2; Bertsch, Ronald L., 1-4-0-0; Bishop, Don H., 0-0-1-0; Biter, Chas. D., 1-4-1-1; Black, Willis L., 0-1-0-0; Blackwood, Tom, 24-21-8-1; Bleidt, John J., 1-11-2-0; Blevins, Boone, 8-21-10-1; Bley, Richard, 2-1-1-0; Bowling, Donald E., 0-0-2-0; Boyles, Paul E., 14-11-2-5; Bradford, Mike, 1-1-0-0; Bramble, James, 1-1-0-0; Branstetter, Chas. E., 1-1-1-1; Brant, Bernard, 5-20-9-2; Brashear, Loy Ray, 16-24-5-1; Brewer, Kenneth J., 1-2-0-0; Bridges, Ralph L., 0-2-1-0; Brizendine, Vic, 8-0-2-0; Brock, Alben, 38-16-0-2; Brock, John D., 7-5-2-0; Brock, John H., 26-14-4-2; Brock, Lavone E., 1-1-1-0; Brown, Billy C., 6-10-5-1; Brown, E. C., 8-18-4-1; Brown, John W., 21-12-3-4; Brown, Lyman D., 0-3-1-2; Browning, Earl, 12-14-2-0; Bruner, Jack C., 33-17-3-1; Buis Nathaniel, 4-15-4-1; Bunn, Harold, 0-1-0-0; Burch, Bill, 31-6-2-1; Burehett, Dwight, 3-0-0-0; Burd, Robert T., 4-10-4-0; Burgess, Jacky W., 1-0-0-0; Burke, Harry R., 34-18-3-1; Burkhart, James G., 0-0-1-0; Burton, Billy J., 1-3-0-0; Bush, Karmen B., 4-7-1-0; Butcher, Douglas, 22-15-10-0; Butcher, Granville "Bo", 22-15-8-2; Butcher, Stephen D., 1-0-0-0; Butler, Bob, 11-18-3-0; Butler, Jack K., 1-0-1-0; Butner, Billy M., 8-19-2-1; Caldwell, James A., 8-30-6-1; Calitri, Don L., 0-2-3-1; Calahan, Thomas J., 2-11-1-0; Campbell, Joe E., 0-3-0-3; Campbell, John Jr., 6-8-0-0; Campbell, Wm., Jr., 2-1-1-0; Campbell, Wm. C. (Bill), 2-4-0-1; Canaday, Glenn, 4-12-2-0; Canady, Ray B., 0-7-0-1; Caple, Harold, 9-16-3-0; Carlberg, John H., 15-29-3-2; Carlberg, Ralph C., 4-6-0-1; Carr, Billy W., 0-0-1-1; Carter, Jack T., 4-13-6-2; Cash, Chas. C., 4-15-5-1; Cates, Billy Chester, 0-3-3-0; Certain, Garland, 0-0-2-0; Cisco, Robert N., 9-11-0-1; Clardy, Barry D., 0-3-0-0; Clark, Robert L., 0-5-0-1; Clark, Tom, 3-4-0-0; Clater, James F., 1-0-0-0; Claypool, Thomas W., 0-6-2-1; Cleavenger, Ed, 9-14-6-3; Clemmons, Samuel P., 2-10-4-0; Cochran, Roy H., 1-1-7-0; Coffey, Marion L., 1-6-1-0; Coffey, Robert A., Jr., 5-8-2-0; Coker, Allen, 0-1-1-0; Coleman, Daniel L., 0-1-0-0; Colley, Lynn, W., 4-26-6-1; Collier, Burnard, 1-6-0-2; Collins, Hubert, 19-21-6-3; Collins, Robert W., 0-2-0-0; Collins, Ronald K., 1-2-0-0; Collinsworth, Kenneth E., 0-1-0-0; Colvin, Jack E., 1-3-0-0; Combs, Henry B., 2-8-4-1; Combs, Keith A., 12-10-1-1; Combs, Sherman, 3-2-

1-1; Conley, C. B., 3-4-2-0; Conley, Ted L., 24-6-4-1; Cook, 0-1-0-0; Cooksey, Marvin O., 7-18-3-2; Cooper, John F., 1-3-0-1; Copley, Sidney M., 2-2-0-0; Corlis, John H., 0-1-0-0; Cox, Colin, 1-8-3-0; Cox, Jim, 4-2-0-0; Cox, Kenny, 1-1-1-1; Cox, Rufus A., 20-12-3-1; Crager, Bobby F., 22-6-1-0; Cravens, Richard F., 2-8-4-8; Cravens, Robert L., 5-22-9-5; Crawford, W. Gordon, 0-1-0-0; Crisp, Alben, 0-0-0-1; Croft, Lewis E., 3-12-3-0; Crouse, James W., 1-1-1-2; Crouse, Joseph L., Jr., 0-0-2-0; Cullum, Harold D., 2-3-4-2; Culp, Ronald D., 10-16-4-1; Cummins, Ray E., 0-3-0-0; Cunningham Jack D., 0-1-0-1; Curtis, Douglas E., 2-3-2-1; Dalton, John P., 0-3-0-2; Dame, L. J., 8-18-5-2; Daniel, Roger T., 9-6-1-0; Daniels, Robert A., 18-21-7-0; Davenport, Bowman, 3-6-1-0; Davis, Harold T., 6-22-4-2; Davis, Ralph C., 0-0-1-0; Davis, Tom, 0-2-0-0; Dawson, Alby L., 0-1-0-0; Day, Bill E., 6-18-3-1; Day, Jack L., 3-5-0-1; Dennison, James E., 0-3-3-0; Denton, Wm. D., 2-7-0-0; DeVary, Bill, 20-8-5-2; Dickson, Tom, 0-0-1-0; Dieterle, Owen, 0-2-1-0; Dillihay, Ralph Elbert, 3-5-2-3; Disken, Jim, 4-4-0-0; Divine, Wayne L., 3-5-0-0; Dixon, Billy M., 9-10-3-8; Dobson, Kenneth, 0-7-0-1; Dockery, Donald, 0-6-0-1; Donahue, Owen E., 1-2-0-0; Dorsey, James A., 4-12-0-0; Dotson, John B., 1-2-0-0; Downs, Joseph W., 4-4-1-0; Drake, Richard R., 20-29-3-1; Draughn, Hubert H., 1-0-0-0; Driskell, Earl Jr., 10-14-0-2; Duerson, Wm. R., 7-17-2-2; Duff, Birchell, 9-2-0-0; Duff, Earl, 13-15-0-0; Durbin, Hade Jr., 13-18-5-7; Durbin, Roy V., 2-14-6-3; Duvall, Thomas J., Sr., 18-38-4-1; Dyke, Orville Dean, 3-19-4-3; Eades, James M., 9-19-5-0; Edgington, Fred, 3-1-0-1; Eldridge, Wayne R., 5-10-2-0; Elliott, Carroll L., 16-27-3-0; Elmore, Jimmy A., 17-21-4-0; Emery, James C., 0-1-0-0; Emery, George A., 0-4-2-2; Farley, Jimmy, 4-10-4-2; Farmer, Billie L., 2-2-3-0; Farmer, Jack, 3-4-0-1; Featherstone, Jerry, 0-2-0-1; Feltner, Ralph Jr., 2-18-0-5; Ferguson, Ray, 1-2-3-0; Ferguson, Thomas L., 0-1-0-0; Fields, Rufus Jr., 1-7-0-1; Finley, Albert R., 21-34-8-5; Finley, Ben, 0-0-0-1; Fish, Leland G., 9-10-2-0; Fiske, Chas. N., 2-0-0-0; Flynn, Bobby, 14-17-4-2; Foster, Bob, 26-18-3-0; Fowler, Ronald S., 0-1-0-1; Fox, David G., 0-1-0-1; Fraley, Bill J., 3-5-5-4; Fraley, Joe, 2-2-0-0; Francis, James F., 5-5-0-0; Francis, Wm. Lewis, 0-2-3-1; Frankel, Louis S., 0-1-0-0; Freeman, Roy Leon, 2-2-0-0; Freese, Ollie, 0-1-1-0; Freppon, Thomas E., 4-20-1-2; Fritz, Sherman, 25-26-3-1; Fugate, Robert Jr., 1-0-0-0; Gabbard, John B., 2-5-0-0; Gaines, Harvey, 4-4-0-3; Gaither, Gene, 13-43-2-2; Gardner, Howard E., 3-12-1-0; Gaskin, Donald W., 0-1-0-0; Gentry, Dale J., 5-15-3-1; Gettler, John F., 2-8-5-1; Gibson, Carl, 1-3-1-0; Gibson, Fred W., 13-35-7-0; Gilbert, Gerald L., 49-35-1-1; Gilman, Ronald R., 0-3-0-0; Goebel, N. Glen, 2-1-0-0; Goheen, Larry, 0-0-1-0; Goins, Edgar S., 9-28-2-2; Golden, Billy Joe, 31-20-1-5; Goley, Jim, 14-21-2-0; Goodman, Jack, 31-32-5-1; Gour, Bob, 6-2-0-0; Gover, Luid, 6-11-1-2; Graham, James E., 1-1-0-0; Green, Donald P., 2-9-0-3; Greer, Phil G., 1-13-2-1; Grigsby, Pete Jr., 5-2-0-0; Grooms, Roger, 1-1-0-0; Haas, Tom V., 0-1-0-0; Hackett, Wilbur, 0-0-0-1; Hall, Jack R., 5-10-0-2; Hall, Tommy D., 0-0-1-0; Hall, Wm. W., 28-16-3-2; Ham, Ronald, 3-1-1-0; Hamilton, Mike D., 0-0-1-0; Hamilton, Walter F., 3-5-1-1;



Hamm, Gerald, 7-27-3-1; Hamm, Harold D., 0-6-1-0; Hammons, Norman, 11-21-9-3; Hancock, Norb., 2-25-4-4; Haney, Raymond, 9-6-3-1; Hardin, Don G., 28-16-5-0; Hardin, Jack H., 0-1-1-1; Hargis, Noel Keith, 1-2-0-0; Harjo, Austin A., 1-3-1-1; Harned, Vic, 36-29-0-0; Harper, Randall H., 12-37-3-1; Harper, Robie, 12-5-0-0; Harris, Billy, 9-33-7-1; Harris, Larry R., 0-0-3-1; Harris, Richard H., 0-4-3-0; Harris, Wayne, 5-3-2-6; Harrison, John L., 21-19-5-4; Hatfield, Dennis G., 0-1-0-0; Hausfeld, Walter P., 1-0-0-0; Hawkins, Donald H., 21-27-2; Hayden, John (Jack), 3-7-3-2; Hayden, Samuel J., 5-6-3-0; Hayes, James V., 2-14-2-2; Hazelwood, Howard P., 0-2-0-2; Heath, Robert, 0-3-1-0; Heinichen, Carl C., 0-2-0-0; Heldman, John Jr., 0-1-0-0; Henson, Tony C., 3-8-4-0; Hess, Chas. R., 6-5-1-0; Hewitt, R. T. (Buddy), 16-27-4-1; Hicks, Dane, 7-18-1-0; Hicks, Shirley Gene, 0-1-0-0; Hill, James P., 10-23-1-0; Hill, Jimmy P., 1-1-2-4; Hill, Wallace, 0-2-2-2; Hill, Wm. D. Jr., 0-1-1-1; Hina, Chas. W., 0-2-0-0; Hina, Henry B., 0-1-1-2; Hina, Roy D., 4-8-2-0; Hines, Bob, 1-1-0-0; Hinton, Henry, 24-17-2-3; Hitt, Billy D., 0-2-0-0; Hobbs, Chas., 1-0-0-0; Hoffmeier, Paul, 0-1-0-0; Hofstetter, Joe, 10-11-1-1; Hollan, R. W., 0-2-0-0; Hollar, Lanny W., 0-1-0-0; Holt, Larry Kent, 0-1-0-0; Holt, Robert E., 5-28-11-5; Holthouser, Ora Lee, 4-17-3-5; Holton, Ray, 5-22-5-0; Hook, B. B., 6-26-3-0; Hook, Don, 1-6-3-0; Hopper, Fred V., 0-1-0-0; Hord, Ronnie D., 2-13-1-2; Horn, Everett Jr., 6-8-4-0; Horsman, Bill, 5-25-4-5; Hounshell, Bill, 0-1-0-0; Howard, Bruce, 5-6-0-0; Howard, James D., 0-3-1-0; Howard, Orville R., 1-4-0-1; Hubbs, Sonny, 8-16-12-2; Huber, Jerry, 0-4-1-0; Hudson, Miles F., 0-1-0-2; Huggins, James F., 1-0-0-0; Hughes, Paul P., 20-9-2-0; Hume, Chas. E., 9-22-5-1; Hunley, Neil P., 6-3-0-1; Hurley, Robert, 2-6-2-0; Hurt, Thomas C., 0-2-0-0; Hutchens, Jim, 6-17-0-0; Huter, James J., 1-0-0-0; Idol, Billy Joe, 14-10-1-1; Ingraham, Gary J., 0-2-0-0; Jackson, Robert H., 2-0-0-0; Jacobs, D. R., 0-1-0-0; Jacoby, Ben, 1-0-0-0; Jenkins, Beryl M., 1-4-1-0; Johnson, Gayle, 0-1-1-0; Johnson, Harry B., 9-8-2-1; Johnson, Henry Sig., 1-0-2-3; Johnson, James M., 14-20-6-2; Johnson, Jerry L., 1-2-0-1; Johnson, Ronald L., 4-13-2-5; Johnson, Walter, 32-10-1-0; Johnson, W. Bernard, 0-1-0-0; Johnson, Wm. E., 0-1-0-0; Jones, Bobby, 3-6-1-0; Jones, Carson, 3-4-0-1; Jones, Denver, 4-6-1-0; Jones, Frank, 0-1-0-0; Jones, James Ervin, 0-10-4-2; Jones, Robert L. Jr., 9-7-0-0; Kays, Herbert S., 0-1-0-0; Keatley, James H., 0-2-0-0; Keeling, Reuben, 1-1-0-1; Kelly, Chas. R., 8-12-1-1; Kelsch, James R., 0-0-0-1; Kilcoyne, James D., 0-1-0-0; Kimmel, Jerry, 38-42-4-0; King, James A., 26-35-5-2; King, Raymond H., 6-19-1-0; Kirk, Chas., 15-24-4-4; Knauer, Glen M., 1-15-3-0; Knight, Bill, 15-15-2-1; Kouns, Robert H., 10-5-0-1; Kratzberg, Richard R., 1-2-1-0; Kuhl, Lawrence, 35-14-4-1; Lally, James J., 0-5-4-2; Lambert, Irvine G., 4-12-0-0; Lambert, R. E. (Bob), 2-2-1-1; Lancaster, Glenn, 2-4-0-1; Landers, John F., 0-1-0-0; Landreth, Robert H., 1-1-1-0; Laskey, George O., 0-1-0-1; Latkovski, Anastasius (Andy), 8-16-2-3; Laubheimer, Don T., 18-20-4-1; Laugherty, Kenneth R., 0-1-1-0; Lawson, Rondell, 17-12-1-3; Layne, Bert, 1-0-0-0; Leber, Jerry L., 1-0-0-0; Lefevers, Coleman J., 2-6-0-0; Leigh, Eugene F., 1-1-0-0; LeQuire, Harold M., 10-25-1-1; Letcher, Ronnie, 0-2-0-1; Lile, Clyde F., 6-17-5-0; Lilje, Wm. Westly, 2-3-1-0; Linette, James M., 0-1-0-1; List, Frank A., 3-19-3-0; Littlepage, Pryce, 8-15-4-0; Lloyd, David, 0-3-3-0; Lloyd, John M., 0-0-0-1; Logan, Doug, 0-2-0-0; Logsdon, Thomas (Al), 12-28-6-1; Long, Bill, 0-1-0-0; Long, James E., 0-5-0-1; Long, Robert F., 6-12-2-3; Loudon, Hubert C., 18-12-1-1; Loudy, Kenneth, 8-6-1-0; Lowe, Gene T., 21-27-3-7; Lowe, James D., 0-11-4-1; Luebbers, Leonard, 2-6-1-0; Lubby, George, 15-16-5-5; McBride, W. Kenneth, 3-1-0-0; McCargo, Frank, 4-20-5-1; McCauley, John W., 7-13-0-1; McClintock, Lee L., 0-1-0-0; McClure, Wm. S., 18-15-1-0; McCoy, Hayse, 14-21-3-4; McCoy, Larry, 1-2-2-0; McEldred, Chas. G., 0-1-0-0; McGehee, Gordon, 5-22-3-1; McGinty, L. V. Jr., 2-7-1-4; McGlasson, Galen, 3-5-6-1; McKenzie, Dwight E., 1-0-0-0; McKenzie, James M., 7-5-1-1; McKenzie, Robert L., 1-3-0-0; McLane, Albert I., 22-27-4-1; McLean, Gordon, 2-2-0-0; McLeod, Robert N., 6-7-1-0; McNamea, John H., 2-3-2-1; McNamee, Jack, 0-1-0-0; McPherson, Ray A., 0-0-1-0; McPike, Ray S. Jr., 0-1-0-0; Maddox, Richard, 4-0-1-1; Madon, Robert L., 37-8-1-3; Mames, Geo. E., 20-29-3-3; Mang, Berry W. Jr., 0-1-0-1; May, E. B. Jr., 22-12-0-0; May, Larry, 1-10-2-1; Mayes, Edward, 1-1-1-0; Maynard, Lonnie, 0-1-0-0; Maynard, Wm. D., 0-3-0-0; Meek, James D., 0-4-1-1; Melear, Leland, 14-18-2-3; Melmige, James Jr., 8-6-0-1; Marklav, George, 0-0-1-0; Martin, Woody, 0-2-0-1; Mason, Gene A., 0-7-3-1; Massie, Stephen M., 1-7-2-0; Mathis, Mike, 4-10-1-1; Melton, Bob, 0-2-0-1; Menefee, Chas., 0-1-0-1; Meredith, Denny E. Jr., 17-34-7-5; Metzger, Don, 5-11-2-2; Middleton, John, 6-8-0-0; Milburn, Daniel, 8-28-4-0; Miles, Marvin, 2-1-0-0; Miles, Robert J., 2-7-0-0; Miller, Bob, 11-24-2-0; Miller, Claude O., 1-2-0-0; Miller, Ferrel, 3-16-2-0; Miller, Harold P., 3-9-5-1; Miller, Rex, 1-4-0-0; Miller, Victor L., 0-5-0-0; Moberly, Harold F., 0-3-2-2; Monahan, Ed., 0-1-3-1; Monks, Ronald E., 0-0-2-0; Montgomery, Chester, 17-18-2-2; Moore, Donald, 0-1-0-1; Moore, Larry, 0-0-1-0; Moore, Marvin, 7-2-0-0; Moore, Richard E., 41-38-4-2; Moore, Robert W. Jr., 30-23-4-1; Moore, Wm. G., 0-0-1-0; Moreland, Donald J., 0-1-1-1; Morgan, Richard, 5-14-2-0; Moser, Rudy Clay, 62-28-3-0; Mueller, Jack R., 0-1-0-1; Mullins, Jerry, 0-1-0-0; Murphy, Tom, 0-2-4-0; Murrell, Allen L., 2-30-8-1; Napier, Chas. M., 1-1-3-0; Napier, Wallace R. Jr., 0-3-0-0; Nash, Dennis, 1-7-0-0; Ness, Max A., 1-3-2-0; Newcomb, Bobby, 0-4-0-3; Newman, Bill, 11-4-0-0; Newnam, Larry G., 2-3-0-0; Nieland, Douglas, 1-2-0-0; Noel, John W. (Pete), 0-1-0-0; Norwood, Thomas R., 2-2-0-1; Nuss, Albert M., 2-15-4-2; O'Connell, Jim, 6-8-0-0; O'Keefe, Thomas, 0-2-0-0; Oldham, John H., 0-2-0-0; Omer, Harold G., 1-7-4-1; O'Nan, Harold L., 3-10-6-6; O'Nan, Norman, 17-26-2-1; Orem, Dale L., 2-3-1-0; Osting, Lawrence J., 1-1-1-0; Otis, Bill, 1-4-0-0; Overbey, Jerry L., 1-3-1-0; Owens, Bruce E., 4-3-0-0; Owens, Bruce V., 7-9-3-2; Pace, Donald, 6-13-0-0; Pack, James R., 0-1-0-0; Padgett, R. K., 14-14-3-1; Page, James N., 0-7-3-0; Park, J. M., 0-1-2-2; Parker, Francis V., 0-3-0-1; Parrish, Willie, 0-0-1-0; Parrott, Lanny L., 8-18-0-2; Parsons, Fred, 16-16-4-0; Patterson, Bill E., 3-6-3-1; Paxton, Gary R., 4-1-3-0; Payne, Gayle, 3-14-2-0; Pedigo, Albert M., 1-0-1-2; Peeno, Harry, 2-7-5-0; Pence, Wm. Jerry, 1-12-5-1; Perkins, Ronnie, 7-21-0-0; Perry, James E., 4-15-7-1; Phelps, Ralph (Ruddy), 2-2-0-0; Phelps, Ray, 4-3-0-0; Phillips, Thomas, 1-7-1-1; Pietrowski, Paul, 0-7-1-0; Pittman, Spencer R., 0-1-0-0; Poe, Thomas E., 1-8-0-1; Pollock, Robert, 6-3-0-0; Pope, Roy T., 1-4-0-0; Poppas, Nicholas, 3-0-0-1; Porter, Clarence, 0-0-1-0; Powers, Elmer, 0-1-1-0; Prater, Randal, 1-0-0-0; Price, Don M., 3-3-0-1; Price, James E., 1-10-1-0; Prideon, Chas. E., 0-1-0-0; Pursiful, Chas. E., 0-1-0-0; Quisenberry, James M., 0-0-1-0; Ramey, Herbert D., 20-10-3-0; Redman, Melvin P., 10-13-3-0; Reed, Chas. R., 18-15-4-2; Reed, Gordon, 0-2-0-1; Rees, Gayle, 4-2-2-1; Reeves, Curtis R., 1-0-0-0; Rehman, Fred, 1-6-0-0; Reinhardt, Myron S., 29-29-1-0; Relford, Paul Glenn, 16-22-7-5; Rexroat, Jerry L., 15-35-11-6; Rhodes, Cecil, 0-2-0-0; Rice, Wm. L., 0-2-0-0; Rich, Dennis W., 1-12-1-0; Ricketts, Claude O., 15-10-1-5; Ricketts, Donald R., 5-7-1-0; Rigdon, Kenneth J., 1-3-5-0; Riggs, Floyd L., 3-4-1-0; Ring, Bill, 22-20-2-0; Rister, Edgar L., 34-25-2-2; Ritter, Gocbel, 25-11-0-2; Robinson, D. Blake, 0-2-2-2; Robinson, Don L., 8-4-0-0; Rodgers, Tom H., 6-22-5-0; Roe, Doyle (Buddy), 7-17-0-1; Roeckers, Bernard, 0-2-0-0; Roesel, Joseph, 7-17-6-0; Rogers, Eldridge, 0-1-4-2; Rogers, Howard A., 16-25-3-0; Roller, Otis, 0-2-2-0; Romans, Jerry, 7-7-1-1; Rose, Walter S., 2-6-1-2; Ross, Bill T., 0-4-0-1; Ross, Harold L., 2-3-0-0; Runyon, Tommy, 6-17-1-0; Russell, Howard (Joe), 0-1-1-0; Sagers, Robert M., 0-1-0-0; St. Clair, Robert L. Jr., 27-15-2-0; Salyer, Henry E., 3-8-3-2; Sanders, Mel, 0-1-0-0; Sandusky, Jerry, 0-10-0-0; Saylor, Carlee, 3-8-2-0; Scent, James Albert, 0-2-0-0; Schad, James, 3-4-1-1; Schmidt, Thomas C., 8-8-3-0; Scott, Emmanuel H., 4-6-0-1; Scott, Willie L., 4-0-4-0; Sears, Wilson, 5-30-3-1; Seavers, Joe, 9-14-3-2; Selner, Ed, 12-19-4-0; Selvy, Curt, 15-19-4-0; Serey, George E., Aster, 0-4-0-1; Skaggs, Robert L., 4-18-0-0; Small, Wm. W., Jr., 1-0-0-0; Sharp, Robert J., 0-1-0-0; Shaw, Donald Lee, 3-12-6-1; Shaw, Earl, 11-25-8-3; Shearer, Robert L., 0-2-2-1; Shewmaker, Trefert, 1-2-0-0; Shewmaker, Wayne, 0-2-0-4; Shope, Lowell M., 0-2-0-0; Shuck, Thomas G., 19-18-4-3; Simpson, Fred C., 5-20-2-0; Sims, Frank D., 37-47-3-3; Sims, Tom M., 0-1-0-0; Singer, Tony, 0-1-1-1; Singleton, Bobby L., 16-36-8-1; Singleton, Jerry L., 4-28-6-2; Sizemore, 21-24-3-0; Smith, Benny, 0-1-0-0; Smith, David W., 0-1-1-0; Smith, James H., 0-6-0-1; Smith, Roy M., 5-16-6-2; Smith, Thomas W., 0-0-1-0; Smith, Wayne N., 22-12-2-2; Smith, Willard N., 32-16-1-0; Smith, Winfred, 3-6-1-0; Snow, James A., 0-2-0-0; Snow, Robert, 0-2-0-1; Sparks, Keith E., Jr., 2-0-0-1; Sparrow, John Allen, 1-0-0-1; Spencer, Irv., 20-18-4-2; Spiceland, S. E., 0-12-2-3; Spoonamore, Jim, 6-24-6-0; Stapleton, Tom, 0-1-0-0; Stark, Douglas O., 2-2-0-0; Steenken, William R., 1-2-4-1; Steohens, Herbert D., 2-0-0-0; Stephenson, Harry S., 1-2-0-0; Stethen, James E., 0-11-2-1; Stevens, James L., 4-0-1-0; Stewart, Eddie V., 0-0-1-0; Stiff, Maurice E. Jr., 17-22-2-1; Stikeleather, Clyde L., 24-34-1-1; Stinson, Chas. L., 0-1-0-0; Stoess, Henry L., 4-7-3-1; Strain, Richard P., 9-19-7-1; Strickland, Herbert, 0-5-2-2; Strong, Arnett, 24-2-4-0; Strong, Chas. E., 0-2-1-1; Sucietto, Dick, 0-1-0-0; Sullivan, Dan L., 17-21-1-0; Sullivan, Don Chris, 18-10-1-1; Sumner, Carl, 20-26-3-0; Swarts, Joseph, 2-1-0-0; Switzer, Richard, 4-1-0-2; Tackett, Archie, 1-1-0-0; Tate, Harold D., 3-7-5-0; Taylor, Ed., 19-19-1-1; Taylor, Jim T., 0-8-3-1; Taylor, John O., 0-0-1-0; Thomas, Billy G., 8-11-8-0; Thomas, Frank M., 0-0-2-0; Thomas, Paul E., 1-3-1-2; Thompson, Houston C., 1-0-0-0; Thompson, Jack, 0-1-0-0; Thompson, Kenneth, 11-10-2-4; Thompson, Larry, 1-3-0-3; Thompson, Thomas A., 19-26-4-4; Thompson, Tom D., 1-2-0-1; Tierney, Larry W., 0-1-0-0; Tillery, James C., 2-9-1-0; Tinsley, Marion F., 16-21-5-2; Towler, Stephen W., 0-1-0-0; Toy, Charles K., 0-1-0-1; Triplett, Herbert W., 33-28-2-2; Turley, Roy M., 1-0-0-1; Tyre, Donald, 10-11-2-4; Urlage, Richard, 14-23-2-1; VanHook Samuel, 1-4-2-0; Vanover, J. W., 4-41-7-4; Vanover, Wiley G., 5-29-3-2; VanZant, Jim, 5-9-1-0; Varble, William, 2-6-0-0; Varner, Ray G., 4-9-5-2; Venekase, Bruce G., 0-0-0-1; Vermillion, C. D., 5-13-0-0; Vescovi, Raymond B., 2-0-0-1; Vest, Thomas, 1-0-0-0; Vinson, Ray T., 2-8-1-0; Vipperman, Al, 0-2-0-1; Voorhis, Ken, 5-12-1-0; Vories, Dick, 25-22-1-0; Waller, Bobbie E., 15-10-3-3; Walton, Roy,



8-9-2-1; Ward, Robert L., 8-12-5-0; Weaver, Ray, 8-21-1-0; Weihe, Robert J., 0-1-1-1; Weiner, Richard A., 1-6-1-0; Wells, Glenn, 2-10-2-2; Wesche, James A., 3-17-5-1; West, John F., 0-8-3-0; Weyer, James, 14-7-0-0; White, David B., 0-0-3-2; Wickham, James Robert, 6-10-0-0; Wihebrink, James A., 0-1-0-0; Williams, Jack A., 12-18-1-1; Williams, Roger, 16-20-4-0; Williams, Tom G., 7-9-6-3; Williams, Willie H., 0-1-0-0; Wilson, Gerald, 0-1-0-0; Winchester, Roy L., 24-27-3-0; Winders, Bobby G., 0-2-0-0; Winfrey, Shelby, 21-16-2-0; Wingfield, Felix G., 5-8-1-1; Winnecke, John E., 0-1-0-0; Wise, Jack, 16-7-0-0; Withrow, Roy D., 0-1-1-0; Witten, Clifford, 1-0-0-1; Witten, Hershel D., 0-2-0-0; Woods, Gene B., 2-16-3-1; Woolwine, James C., 1-0-0-0; Wootton, George B., 1-12-5-1; Wright, H. W. Jr., 1-5-1-0; Wright, James L., 1-4-0-0; Wright, Raleigh F., 0-1-0-0; Wulfek, James, 1-4-0-1; Young, James, 0-1-4-0; Zachary, David A., 0-2-0-0.

## REGISTERED FOOTBALL OFFICIALS OF THE K.H.S.A.A.—1970

(List Compiled September 1)

If one telephone number is given for an official listed it is the home phone unless otherwise designated. If two numbers are given the first number is that of the home phone.

Adams, Charles David, 4800 Andrea Way, Louisville, 964-5419  
Adams, Michael, 509 Brockton, Richmond, 623-4787  
Adams, Paul E., 649 King Ave., Barbourville, W. Va.  
Ahrens, James R., 112 Ward Ave., Bellevue, 261-3304, 921-1520  
Albright, James R., Route #3, Shelbyville, 633-4614, 633-1810  
Allen, Arthur, Route #6, Franklin, 586-6836, 586-3231  
Allison, Roy, Box 749, Harlan, 573-3789, 573-4770  
Anders, Raleigh, 113 Balsinger, London, 864-4060  
Anderson, Douglas L., 104 Monroe St., Columbia, 384-3176 (Bus.)  
Anderson, John G., P. O. Box 244, Prestonsburg, 886-2278, 886-2346  
Ashworth, Paul, 1044 Belvoir, Cincinnati, Ohio, 251-5461, 421-5700 ext. 481  
Austin, Tom A., 230 Mohawk, Paducah, 554-4562, 554-4562  
Ayers, Edward L., 625 Laramie Road, Lexington, 277-2333, 277-1161 ext. 44  
Bacigalupo, Eddie, Route 2, Alamo, Tenn., 696-8888, 686-7401  
Baker, David E., 2000 Cambridge Dr., Lexington, 255-9719, 254-0505  
Ballaban, Tom, 1103 Archland Dr., Cincinnati, Ohio, 522-3024, 761-7600  
Bartels, John T., 1344 Sixth Ave., Dayton, 581-4250, 821-0728  
Barton, Leon, P. O. Box 497, Barbourville, 546-6368, 546-3661  
Bates, Bob, 1120 Meadow Lane, Portsmouth Ohio, 354-2168, 353-1013  
Batterton, Keith, 602 Ashwood Drive, Harrodsburg, 734-9624, 734-4313  
Battisti, Edward A., 5945 Bavaria Place, Dayton, Ohio, 233-9818, 224-0731  
Beane, John Edward, Box 2594, Pikeville, 437-7957, 432-2565  
Beheler, Donald S., 313 Robin Road, Paris, 987-3692, Lexington 233-2000 ext. 2410  
Bell, Clarence T., 3812 Meadow Haven Rd., Louisville, 239-0782, 582-5573  
Bellisemo, Frank, 3524 McHenry, Cincinnati, Ohio, 662-6536, 421-5700 ext. 4631  
Bennett, Howard (Pete), Route #6, Mayfield, 247-3309, 247-3510 ext. 41  
Benzinger, Joseph, Jr., 3502 Behymer Rd., Cincinnati, Ohio, 752-3932, 553-3195  
Bero, James J., Box 968, Williamson, W. Va.  
Berry, Lyman T., Jr., 5 Steiner Blvd, Barbourville, W. Va.  
Bewley, Harry G., 306 Estate Drive, Elizabethtown, 765-5018, 769-2311  
Blake, Jesse L., 503 Tenn. Ave., Pineville, 337-5272, 337-2392  
Blanton, Homer, 138 New Hampshire, Ashland, 324-1730, 324-1730  
Blevins, Donald Wayne, 1954 Natchez Trail, Lexington, 277-6824, 233-5000 ext. 5492  
Blosser, Kermit A., 80 Maplewood Dr., Athens, Ohio, 593-3007, 594-5031  
Bocook, Earl, 1102 Beech St., Kenova, W. Va., 453-1810, 453-3661  
Boemker, Bob, 69 Thompson Ave., Ft. Mitchell  
Bordy, Phillip, 3308 Stratford, Louisville, 458-7005, 582-3994  
Boswell, Martin, Route #2, Providence, 667-5143, 249-3132  
Bowling, James Earl, 7600 Yorktown Rd., Louisville, 361-2786  
Boyd, John D., 609 High St., Coal Grove, Ohio, 532-6503, 532-8143  
Boycs, Jerry F., 2700 Algonquin, Ashland, 324-6955, 324-1111  
Bradford, Bob, 76 Southview, Ft. Thomas, 781-1217, 752-1600  
Bramble, James L., 153 Manitoba Lane, Lexington, 272-4826, 278-9355  
Brashear, Loy Ray, Route #1, Glendale, 854-2921, 765-2181  
Brauch, Charles J., 117 Westview Drive, Bardstown, 348-3218, 348-3991  
Bridewell, Gilbert, 153 Billens, Bellevue, 581-3710, 581-8071  
Brock, Johnnie G., Stoney Fork, 337-3513, 337-6262  
Brock, Alben, Kettle Island, 337-3848, 337-2058  
Brock, Charles LeVerne, Box 405, Loyall, 573-3819  
Brotzge, Maurice J., 3029 Beals Branch Dr., Louisville 893-7206, 896-4461  
Brown, Bill, 2553 Dell Rd., Louisville, 458-4857, 582-1347  
Brown, Herman G., Route #2, Shelbyville, 633-2516, Louisville 589-9177  
Brown, John W. (Scoop), 975 Waverly Drive, Lexington, 252-3212, 252-0954  
Brubaker, Don, 101 Michael, Route #3, Box 894, South Point, Ohio, 377-2235, 377-2235  
Brubaker, John E., Box 241 B, Route #1, South Point, Ohio, 377-4319  
Bruce, William, Humboldt Hi-Way, Milan, Tenn., 686-7217  
Brummett, Don, 3406 Rowena Rd., Louisville, 459-0682, 673-5401  
Buckley, Robert S., Jr., 761 Washington, Flatwoods, 836-8275, 324-1111 ext. 5768  
Bullock, Ted, 2622 Clays Mill Road, Lexington, 277-0145, 252-7521  
Burgess, Oley, 1708 Sycamore St., Kenova, W. Va., 453-2593  
Burke, David Dean, 448 29th St., Ashland, 324-3047, 429-1326  
Burke, Harry R., Prestonsburg, 886-2796, 886-2385  
Burkett, James F., 2013 Goldsmith Lane #25, Louisville, 452-0849, 459-2331  
Burkhart, James G., Box 169, Loyall, 573-1437, 664-3444  
Burton, James E., 401 Barbour St., Providence, 667-2296  
Burton, John, 1016 1/2 Greenup Ave., Ashland, 324-2348, 325-3084  
Cain, Paul D., 3731 Earls Court-View, Cincinnati, Ohio 321-7246, 871-6103  
Caldwell, Charles M., Box 2333, Huntington, W. Va.  
Calitri, Don, Box 481 Union College, Barbourville, 546-3775, 546-4151 ext. 133  
Callihan, Billy Joe, M. Route, Russell, 836-8020, 836-9525  
Campbell, Bill, 7413 Paiute Rd., Louisville, 366-9296, 366-9561 ext. 388  
Canaday, Glenn, 201 Lincoln St., Vine Grove, 877-5387, 877-5537  
Canady, Ray Blair, 620 North Main, Barbourville, 546-4765, 546-3801  
Carey, Al J. Jr., 417 Lehigh Terrace, Charleston, W. Va.  
Carberg, John H., Box 234, Muldraugh, 942-2723, 942-2730  
Carberg, Ralph, 1501 Elm St., West Point, 922-4456  
Carlson, David A., 2916 Washington St., Paducah, 444-7943, 444-6311 ext. 538  
Carr, Billy W., 411 Longview, Franklin, 586-6355, 586-3261  
Carr, Lawrence W., 323 Shelby St., Bromley, 261-2994, 243-3151  
Cason, Charles, #25 Ivory Towers, Winchester, 744-8684, 744-5656 ext. 59  
Ceel, Donnie, Route #1, Rineyville, 877-5877, 624-7317  
Ceel, A. Morris, 14 Shaw Lane, Ft. Thomas, 441-8427, 381-1480  
Ceil, Roger, P. O. Box 401, Hazard, 436-6644, 436-2151  
Chattin, Ernest P., 615-17th St., Ashland, 324-2665, 325-8586 ext. 231  
Chinn, Ralph, 523 So. Bend Drive, Lexington, 278-8078  
Chiswell, Charles Lawrence, 1348 Royalty Court, Lexington, 254-1564  
Cisco, Robert N., 4288 Oakland, Ft. Knox, 624-7586, 624-5330  
Clark, Charles L., 1330 Ridgeway, New Albany, 945-1410  
Clark, John E., P. O. Box 341, Cynthiana, 234-4605, 299-0411  
Clark, Owen E., 137 Showalter, Georgetown, 863-3719  
Clark, Robert L., 303 Southern Drive, Clarksville, Tenn., 647-2196  
Clemmons, Sam P., 635 Central, Lexington, 255-7566, 252-0391  
Cline, Nick, 5505 Whispering Hills, Louisville, 964-0214  
Cloxton, Harry E., 1128 Eleventh St., West Nitro, W. Va.  
Cochran, Roy H., Jr., P. O. Box 335, Owenton, 484-5281, 484-3948  
Coffman, E. S. (Sam), 1418 Nottingham Road, Charleston, W. Va.  
Collins, Ronald K., 2509 Buttermilk, Villa Hills, 341-0578, 431-9964  
Cook, Richard N., 50 Forest Ave., Fort Thomas, 441-9269, 243-3531  
Cooper, Norris E., 218 Dean St., Bowling Green, 842-3619, 842-8131  
Copley, Sidney M., Box 13, Red Jacket, W. Va.  
Copper, Arden D., 619 Cromwell Drive, Lexington, 278-6256, 278-6256  
Cornwell, James, 506 South Main St., Franklin, 586-4378, 586-4451  
Colin, Cox, Route #2, Box 11, Hazard, 436-5963, 436-3711  
Couch, James Douglas, Box 114, Hyden, 374-3262, 672-2505  
Cowan, R. L., 9615 Walnutwood Way, Jeffersonton, 267-6224, 587-1121, ext. 387

- Craft, Albert E., 1606 Meadowthorpe, Lexington, 254-5365, 255-8600
- Crager, Bobby F., 100 Clark St., Flatwoods, 836-6069, 836-5623
- Creekmore, Les, 316 Walnut, Bellevue, 431-5259, 421-9805
- Crider, Ray, 1120 Frawelm Rd., Louisville, 368-1196, 774-7379
- Cullen, Charles (Bud), 3910 Dondee Drive, Louisville, 451-3322, 637-7648
- Cullum, Harold D., 3943 Rhodes Ave., New Boston, Ohio, 456-5229, 456-4559
- Culp, Willard E., 318 Skyline Park Drive, Hopkinsville, 886-7967, 886-6262
- Cummings, Robert P., Jr., 405 Parkway, Franklin, 586-8483
- Curnutte, Ivan, 511 Columbia Road, Greensburg, 932-5047, 932-5231
- Curnutte, James R., 201 E. Eighth Ave., Huntington, W. Va.
- Current, Ellis Ray, 1933 Bellefonte Drive, Lexington, 277-1049, 272-3311
- Current, Robert, 255 Vanderbilt Drive, Lexington, 272-3052
- Dallmann, James W., 12 Center St., Jeffersonville, Ind., 283-7255
- Daopoulos, James A., 1704 Jennifer Road, Lexington, 299-2369, 258-9000 ext. 2517
- Davis, A. J., 405-56-8201, D Brty 5 Bn 1 Arty, APO N.Y. 09252
- Davis, Charles, Loyall, 593-1640, 573
- Davis, Curt, 1119 E. Burnett St., Louisville, 634-4959, 512-3511 ext. 471
- Davis, Ralph C., 1326 South 7th St., Ironton, Ohio, 532-8606, 532-8143
- Dawson, Jack, 1599 Walnut Street, Kenova, W. Virginia
- Deaton, Daniel E., Box 362, Matewan, W. Va.
- Delaney, William Thomas, 2335 Alexandria Pike, Southgate, 781-2184
- DeSensi, Wilham (Chick), 1704 Lafayette, Apt. 4, Louisville, 447-6582, 774-6407
- Delph, Joe B., Box 937, Lynch, 848-2065
- Dennedy, Bob, 5083 Orange Lawn, Cincinnati, Ohio, 922-8352, 771-8470
- Dent, Don, 1722 Whittier Drive, Jeffersonville, 945-3497, 366-4551
- Denton, Charles, 127 Hubbard Lane, Henderson, 826-4020, 826-9533
- Denton, William J., 303 Bakers Court, Louisville, 368-6047, 584-9271
- Deweese, William L., Jr., 511 North 44th St., Louisville, 778-5955
- Dial, Charles R., 3300 Moncl Ave., Huntington, W. Va.
- Dial, Jack W., 3179 Sumner Ave., Huntington, W. Va.
- Dierolf, Col. William H., Jr., Forest Drive, Applewood Manor, Rd. 1, Dallas, Pa., 675-5633, 675-2123 ext. 27
- Donald, Edward W., 5636A Folger St., Fort Knox, 624-3867, 624-1330
- Dorsey, James A., 4062 Vinedale, Cincinnati, Ohio, 471-8050
- Downey, Robert E., 327 26th St., Dunbar, W. Va.
- Downs Joseph W., 829 Bartley, Bardstown, 348-5123, 348-3991
- Drake, Richard R., 72 Donnelly Drive, Ft. Thomas, 441-4235
- Draud, Jon E., 109 Vernon Drive, Ft. Mitchell, 341-3831, 733-4993
- Dryden, Wallace Lee, 163 E. Maxwell 3A, Lexington, 252-2733
- Duff, Earl, 109 Kentucky Blvd., Hazard, 436-2604, 436-2604
- Duff, William C., Jr., 2452 Mirahill Court, Lexington, 269-2426, 255-0716
- Durbin, Roy, 2911 Dale Ann Drive, Louisville, 452-1730, 587-1121 ext. 486
- Durkin, Jack H., 1613 Kensington Road, Lexington, 254-0146, 255-0717
- Dyer, Royce, Route # 1, Hickman, 236-2288
- Easley, Dan W., 107 Morrison, Wilmore, 858-4072, 858-3911
- Edwards, Richard A., 12 East North St., Madisonville, 821-9034, 821-9086
- Edwards, Sonny, 508 Jefferson Ave., Milton, W. Va.
- Egan, Joseph Patrick, 2036 Deauville Drive, Lexington, 233-1667, 255-3612 ext. 69
- Eicher, Jack, 100 Rossford, Ft. Thomas, 781-0604
- Eldridge, Wayne R., P. O. Box 144, Science Hill, 423-3495, 678-8162
- Elliott, Carroll L., 307 College, Elizabethtown, 765-4007, 765-6118
- Elliott, Chinton, Jenson, 337-3865
- Ellis, Johnny, Prestonsburg, 886-6756, 886-3080
- Elovitz, Carl, 1920 Spring Grove Ave., Lexington, 277-3994, 873-4901
- Engle, Orville L., 128 Oak St., Pineville, 337-2916
- Epley, Donald Wayne, 106 Bowden St., Russellville, 726-6057, 726-9531
- Evans, David M., 101 Judge St., Barbourville
- Everitt, Thomas E., 1803 Carolyn Drive, Lexington, 266-0552
- Eversole, R. J., R. R. # 1, Box 294, Hazard, 436-6033, 436-2141
- Farina, Lawrence, 2837 Fairway Drive, Tempe, Arizona, 967-6958, 267-2510
- Faust, John F. (Jack), 2427 Concord Drive, Louisville, 634-4204
- Fay, John C., 319 C. St. Price Rd., Lexington, 233-1982
- Peck, Richard A., Route # 1, Wilmore, 858-4174
- Feix, Darl W., 213 N. Walnut Street, Cynthiana, 234-4573, 234-1517
- Fenimore, Clarke E., 3943 Kennison Ave., Louisville, 896-4716, 254-9292
- Ferguson, Roy F., Route # 3, Barbourville, 546-3105 (Bus.)
- Ferguson, Thomas Lyle, 231 Barton Drive, Barbourville, W. Va., 736-7094, 529-1311
- Fields, Rickey P., Box 684, Lexington
- Fields, Ronald M., 1673 Country Club Rd., Henderson, 826-9859, 826-8381
- Fields, Wilham L., P. O. Box 2571, Pikeville, 639-2851, 437-6286
- Fish, Leland G., 826 Oak Hill Drive, Lexington, 255-7156, 252-2312 ext. 2535
- Fitzpatrick, Kenneth, 104 Wooton St., Hazard, 436-6121, 436-2212
- Foster, J. W., 119 Kingston Road, Lexington, 277-8703 (Bus.)
- Fortney, Robert L., 2817 Breckinridge Lane, Louisville, 458-1079, 582-3511 ext. 472
- Foster, Berryman, 927 Waverly Drive, Lexington, 255-7374
- Fraleigh, Bill, 1604 Lee Drive, Henderson, 827-3232
- Frankel, Louis S., 3723 Stanton Blvd., Louisville, 454-6519, 454-6519
- Franklin, Clifford, 10152 Zig Zag Rd., Cincinnati, Ohio, 891-3567, 251-4828
- Frazier, Tom Roe, Route # 1, Sturgis, 333-4412, 333-4672
- Freese, Ollie, 5518 Mapleridge Dr., Madiera, Ohio, 561-5398, 351-7010
- Fritsch, Bill, Sunset Ridge, Milan, Tenn., 686-1764, 686-7401
- Fryrear, Bill P., 204 Lanark Dell, Middletown, 245-0354, 452-4846
- Fuller, Wilton, 533 Hill-N-Dale, Lexington, 277-6654, 272-1512
- Furlong, William E., 3320 Grandview Ave., Louisville, 895-4755, 582-5108
- Gallagher, Jack F., 2947 Adams Ave., Ashland, 325-2420, 324-2143
- Galuk, Walter M., 412 21st St., Ashland, 325-3305, 325-1751
- Garrett, Richard A., P. O. Box 37, Simpsonville, 722-8858, 722-8995
- Gentry, Dale J., 4945 Determine Lane, Louisville, 447-5981, 585-5814
- George, Boyce D., 2418 Glenmary Ave., Louisville, 458-8582, 582-3371
- Gettler, John F., 705 Providence Rd., Lexington, 254-4017, 266-4801
- Gfell, George V., 3319 Coldstream, Lexington, 272-1349
- Gibbs, Ken, Box 512, U.K. Med. Center, Lexington, 272-4718, 233-5000, ext. 5791
- Gibson, Richard L., 105 4th St., Cynthiana, 234-4251, 234-4632
- Giles, John A., Jr., 912 Weimer Ave., St. Albans, W. Va.
- Gilkerson, Pat H., Route # 1, Box 38, Prichard, W. Va.
- Glass, K. L., 108 Adkins St., Clarksville, Tenn., 648-2056
- Glass, Larry A., 652 Broadway, Georgetown
- Goforth, Bob, Box 548, Loyall
- Gore, Bailey, 1603 Sunset Drive, Murray, 753-8509, 762-6286
- Gorham, Harry C., 117 Hamilton Park, Lexington, 255-4163, 252-2011
- Gour, Bob, 218 South Lee, Bowling Green, 843-9582, 842-9431
- Grabowski, James T., Route # 2, Box 102B, Catlettsburg, 739-6448, 293-7212
- Grace, Charles K., Cypress St., Pineville, 337-3331, 337-2348
- Grace, H. E., Jr., Middlesboro, 248-1290, Pineville 337-2720
- Graham, James E., 2517 Jackson St., Ashland, 324-8169, 325-8155 ext. 376
- Graas, Oscar L., 6125 Loretta Street, Louisville
- Greene, Therman R., Route # 5, Box 653G, Anniston, Alabama, 237-3222
- Griffey, Richard, Box 1425, Williamson, W. Va.
- Gupton, George, 1050 Legion Road, Greensburg, 932-4253, 932-4200
- Gupton, Lawrence, 105 Hillview, Greensburg, 932-5001, 932-5001
- Guy, Newton Samuel, 439 E. Mound St., Harlan, 573-1593
- Hadden, Newell P., Jr., 942 Wolf Run Rd., Lexington, 255-5332, 254-6684
- Hagan, Joe E., 3000 Sherbrooke Rd., Louisville, 458-1352
- Hall, Charles E., 601 Pontiac Trail, Danville, 236-8811
- Hamby, Thomas Edwin, 201 Gateway Lane, Hopkinsville, 885-9980, 885-9980
- Hamilton, Mike D., Forrest Heights, South Shore, 932-4673, 932-3757
- Hancock, Norb, 2412 Tavener Dr., Louisville, 425-0005, 425-0005
- Harjo, Austin A., 108 Airport Rd., Clarksville, Tenn., 431-3781
- Harmon, Clay, Jr., Tyner, 364-5980, 287-7155
- Harper, Robert A., Route # 4, Cadiz, 522-6546
- Harris, David L., Drawer A., Bardstown, 348-5733, 348-3311
- Harris, Jerry, Route # 6, Springfield, Tenn., 384-8656, 384-4578



- Harris, Russell B., 368 Boiling Springs, Lexington, 254-6525  
 Harsh, Ronald B., 211 Oxford Place, Louisville, 893-2335, 774-7379  
 Hawkins, Donald H., Route = 1, Ekron, 828-3631, 828-2125  
 Hawkins, Will A. (Billy), 407 Grace St., Springfield, Tennessee 384-5310, 384-5583  
 Heaberlin, Bill, 768 Washington Ave., Flatwoods, 836-6915, 261-6666  
 325-8511 ext. 469  
 Heaberlin, Gerald Andrew, Route = 2, Box 13602, Catlettsburg, 739-4060, 928-6533  
 Hedge, David W., 321 Mocking Bird Drive, Jeffersonville, Ind., 283-3962, 283-3155  
 Heinichen, Carl C., 1941 Shollenberger Ave., Cincinnati, Ohio, 931-7997, 931-7997  
 Heindol, F. Thomas, 6702 Plantation Way, Cincinnati, Ohio, 522-7834, 321-4480  
 Heinze, Frank, 204 Maple Ave., Prestonsburg, 886-2436, 377-2481  
 Heinze, John G., 39 Highland Ave., Prestonsburg, 886-2195, 886-2356  
 Henderson, Charles Adrian, 316 Andrew Drive, Hopkinsville, 885-5771, 886-1515  
 Hendon, L. J., 228 South 15th St., Murray, 753-3658, 753-2825  
 Hendricks, Donald, 223 Showalter, Georgetown, 863-3632, 235-9556  
 Hensley, Larry O., Box 572, Lexington, 277-5229, 299-1221 ext. 6102  
 Herrick, Calvin P., Jr., 200 South Arnold Ave., Prestonsburg, 886-3494, 886-2311  
 Hicks, Jack, 127 Cook Book Lane, Ft. Mitchell, 331-4518, Hicks, Lloyd, 6253 Spring Meyer, Cincinnati, Ohio, 662-5103, 671-3000  
 Higgins, Edward H., 1530 East 7th St., Hopkinsville, 886-2864- Bowling Green 842-9108  
 Hina, Charles W., Route = 1, Box 202, Sturgis, 333-4409, 333-5522  
 Hina, Henry B., Route = 1, Sturgis, 333-5933, 333-4008  
 Hinkle, Harold L., 816 Brown St., Chesapeake, Ohio, 867-4496, 867-3195  
 Hofstetter, Joe, Box 1815, Williamson, W. Va., 235-1433, 235-1400  
 Holden, Larry, 619 Jefferson St., Franklin, 586-4363  
 Holland, David W., 214 Laura St., Martin, 587-4977, 587-3131  
 Hollingsworth, Ralph, 206 8th Ave. E., Springfield, Tenn., 384-5467, 384-5700  
 Holman S. T. (Bitsy), 207 Second St., Corbin, 528-5197, 528-3213  
 Holton, Glenn, 121 Nelson Court, Barboursville, W. Va., 736-6656, 529-4173 ext. 223  
 Hornsby, Colin, 784 Federal Way, Russell, 836-9137, 324-1111 ext. 5587  
 Horsman, Bill, 2902 South 5th St., Louisville, 637-1201, 964-3301  
 Howard, Jasper E., Box 1004, Middlesboro, 248-3388, 337-3093  
 Howard, Robert E., Kettle Island, 337-5368, 337-3320  
 Howell, Leon, 1100 Alder, Louisville, 969-1541, 587-8811  
 Hubbard, John Douglas, 215 West Beall, Bardstown, 348-3067, 348-8114  
 Huber, Carl, 125 North 37th St., Louisville, 774-3387  
 Huber, Jerry, 2873 W. McMicken, Cincinnati, Ohio, 681-0897  
 Huffine, Gary L., Route = 2, Paducah, 442-4125, 443-8471  
 Hunter, James, 4219 Naneen Drive, Louisville, 367-1361  
 Hunter Willard C., 713 Jefferson Ave., Huntington, W. Va. Hurley, Robert, Box 244, Williamson, W. Va.  
 Idol, Billy Joe, 124 Leafwood Rd., Middlesboro, 248-2837  
 Idol, Lloyd, Jr., 116 Leafwood Rd., Middlesboro, 248-5761  
 Isaacs, Jack, Box 452, Flatwoods, 836-5490, 325-8511 ext. 731  
 Isaacs, Marvin D., 3229 Deborah Lane, Cincinnati, Ohio, 522-0988, 771-3100  
 Ishmael, Stephen A., 407 Tucker Station Rd., Middletown, 245-9571, 245-9571  
 Jacoby, Ben W., 127 Showalter Drive, Georgetown, 863-0508, 253-6812, ext. 23  
 James, Gene, 1507 South 3rd St., Ironton, Ohio, 532-6976, 532-6224  
 Jarrell, Frank W., Box 46, Ceredo, W. Va.  
 Jenkins, Beryl, 2326 South 11th St., Ironton, Ohio, 532-5215  
 Johanson Ralph G., 3769 Temple Dr., Lexington, 272-2705, 252-4951  
 Johns, Charles, Route = 3, Fulton, 479-1819, 479-1819  
 Johns, Joseph O., U. S. 35, Buffalo, W. Va.  
 Johnson, Bob, 3310 Springhaven, Catlettsburg, 739-4628  
 Johnson, Charles Larry, 1318 Millrace, Louisville, 425-6462, 425-1020  
 Johnson, Gordon M., P. O. Box 682, Prestonsburg, 886-3146, 886-3146  
 Johnson, Harry A., Jr., 348 Friedman Ave., Paducah, 443-1767, 444-6311 ext. 402  
 Johnson, Stan W., 3500 Ashlawn, Owensboro, 684-2157, 683-6226  
 Jones, Denver, Apt. 11A Highland Ave., Hazard, 436-2656, 436-2666  
 Jones, J. Carl, 1904 Goodwin Ave., Corbin, 528-2349, 528-2450  
 Jones, Paul, 1166 Ojibwa Trail, Frankfort, 227-6648, 564-4718  
 Jones Paul D., 4012 Massie Ave., Louisville, 895-5074, 636-4980  
 Jump, Frank E., 200 Elizabeth St., Bowling Green, 842-8060, 843-4707  
 Kaelin, Carl D., 323 Idlewylloe Dr., Louisville, 635-2605, 895-8604  
 Kalaso, Johnny R., 103 Grundy Ave., Springfield, 336-3710  
 Kallaher, Jim, 415 West 70th St., Kansas City, Mo., 361-3007, 763-8377  
 Karr, Don, 1503 Woodwin, Corbin, 528-6466  
 Karres, Ronald, P. O. Box 2262, Huntington, W. Va., 429-4296, 529-2318, ext. 222  
 Kathman, Bernie, 3060 Elmwood Dr., Fort Mitchell, 341-7369, 621-7541 ext. 513  
 Kaufman, Alvin R., 8215 St. Anthony Church Rd., Louisville, 366-0126, 587-0871  
 Keifer, Robert B., 2916 Hackworth St., Ashland, 324-2872, 324-1111 ext. 6338  
 Keller, Terry J., 355 Bond St., Covington, 261-9987, 381-7703  
 Kelly, William G., 3420 N. Galeston, Indianapolis, Indiana, 897-9370, 546-9211 ext. 3580  
 Kennedy, James Robert, 1629 Brittany Lane, Lexington, 255-2524, 873-3401  
 Kimble, Frank, Box 2173, Williamson, W. Va.  
 King, Allen V., Route = 1, Box 482, Henderson, 829-9647, 477-5572  
 Kirby, Tommy N., 2338 Strotman Road, Louisville, 448-7811  
 Kirk, Charles F., Box 334, Benham, 848-2039, 633-4422  
 Kiser, Larry L., 10,000 Thixton Lane, Fern Creek, 239-0548, 239-3234  
 Knight, Cecil S., 523 Roseview Terrace, New Albany, Indiana, 945-1248, 584-3211, ext. 651  
 Kraft, H. Nellis, 9321 W. Central, Apt. = 2, Wichita, Kansas, 722-4287, 262-2456  
 Kratzenberg, Ralph, 2412 South 10th St., Ironton, Ohio, 532-5741  
 Kratzenberg, Richard, 2535 South 8th St., Ironton, Ohio, 532-0914, 532-2345  
 Kratzenberg, Robert R., 2420 South 11th St., Ironton, Ohio, JE 2-5741, JE 2-4840  
 Kruk, Louis A., 4102 Lancaster Ave. S. E. Charleston, W. Va.  
 Kuhl, Lawrence, Houser Lane, London, 864-6235, 864-4182  
 Laird, Ron, P. O. Box 328, Fulton, 472-9044, 472-9000  
 Lambert, Irvin, 5110 Rural Way, Louisville, 969-4718, 582-5504  
 Landers, John F., Route = 4, Box 221, Clarksville, Tenn., 647-2656, 798-6805  
 Lange, William E., Jr., 5515 Ken Lane, Louisville, 935-4710, 635-6359  
 Law, William Jolley, 1072 Pamela Drive, Cincinnati, Ohio, 231-2479, 441-0068  
 Lawson, Leland, 949 DePorres Ave., Lexington, 254-1009, 254-8074  
 Leahy, Pat, 2907 Cromarty Way, Louisville, 459-2066, 587-1121 ext. 472  
 Lee, Charles J., 315 Scott Avenue, Lexington, 252-3212 (Bus.)  
 Lee, Douglas, Woodland Hills, Harlan, 573-2676, 573-3440  
 Lee, William A., Box 116, Wallins Creek, 664-2127, 573-5027  
 Lefevers, Colman J., Kettle Island, 337-3808  
 Lefevers, Keith, Kettle Island, 337-3808  
 Lehkamp, Kenneth, 41 Dale Ave., Ft. Thomas, 441-1475, 635-2191  
 Lenahan, Thomas F., 4309 Retreat Rd., Louisville, 964-4636, 451-6008  
 Lequire, Harold M., Woodland Hills, Harlan, 573-1857, 573-5151  
 Levy, Arthur E., 74A, Mtd. Route = 2, Williamson, W. Va., 237-1171, 237-1010  
 Lillie, William Westly, 3018 Taylorsville Rd., Louisville, 451-0562, 582-2658  
 Lingo, Henry E., 424 West Main St., Vine Grove, 877-2346, 877-3755  
 Links, Clifford C., Science Hill, 423-2171, 678-8111  
 Lockhart, Dan, Virgie, 639-2330, 456-7790  
 Logan, Doug, Box 684- Barboursville, 546-4883, 546-4883  
 Logan, Eli, 416 Hill St., Hazard, 436-5018, 436-2151  
 Long, James E., Box 73, Basket, 827-5000, 827-1867  
 Lowe, Gene T., Route = 6, Box 28, London, 864-5724, 864-2207  
 Lowe, Stan, Box 337, Russellville  
 Lusby, George, 615 Pueblo Trail, Georgetown, 863-1440, 863-1170  
 Lykins, James O., 90 Allison Drive, Florence, 371-9531, 371-6366  
 McClure, Tom, 204 Madison, Bardstown, 348-9662, 348-3931  
 McCormick, Don R., 402 Nutwood, Bowling Green, 781-3337, 842-0375  
 McCormick, Donald, 46 S. Alvasia St., Henderson, 826-6314  
 McCoy, Larry, 503 Wilderness Rd., Louisville, 363-5180, 459-8500  
 McDougal, Alf, 7719 Kim Drive, Louisville, 363-5292, 282-8961

- McFadden, James, 649 Northside Drive, Lexington, 299-1635, 254-9366
- McGehee, Gordon, 733 Forest Lane, Covington, 261-6880, 541-9987
- McGinty, L. V., Jr., P. O. Box 226, Pikeville, 437-4720, 432-1226
- McGuire, Jack, 6421 Six Mile Lane, Louisville, 459-4031, 964-3376
- McKenzie, Claude, Jr., Auxier, 886-2097
- McKenzie, Robert L., 1809 Chestnut St., Kenova, W. Va.
- McLane, Albert L., Route  $\pm$  5, Maple Lane, Elizabethtown, 765-7391, 862-3924
- McLemore, Jack T., 217 Merriman Rd., Louisville, 893-5232, 584-1211 ext. 512
- McMillen, J. N. "Bo", YMCA Box 467, Ashland, 836-8054, Ashland, 324-6191
- McPeck, Ronald Lee, 814 Wilma Ave., Radcliff, 351-5333, 624-4747
- McPeck, Talmadge, 600 Beth Ann Drive, Flatwoods, 836-4540, 325-7777 ext. 254
- Madon, Robert L., 314 Catalpa St., Pineville, 337-2135, Frankfort 564-4610
- Magruder, Earl L., Jr., 6911 Oakview Court, Fern Creek, 239-1015
- Maloney, Ross H. (Pat), 6871 Green Meadow, Louisville, Malone, James F., 200 Padgett, Corbin, 528-2424, 528-9019
- Maloney, Ross H. (Pat-), 6871 Green Meadow, Louisville, 893-2348, 895-2020
- Mang, Berry W., Jr., 1624 Woodburn, Covington, 261-9932, 632-8411
- Marcum, Bruce, 1037 West 5th St., Huntington, W. Va., 522-3669, 523-1974
- Martin, Thomas F., Box 175, Dawson Springs, 797-4051
- Matarazzo, S. M., 1602 Keeneland Drive, Murray, 753-8354, 762-3818
- Mathis, Mike, 8447 Foxcroft Drive, Cincinnati, Ohio, 522-9010, 562-6650
- Mattingly, Charles (Pete), 3813 Poplar Level Road, Louisville, 459-5793, 448-2761
- Mattingly, Wayne, Route  $\pm$  4, Russellville, 726-2051 (Bus.)
- May, E. B., Jr., Box 185, Prestonsburg, 886-8661, 886-3414
- May, Larry, 59 West 2nd Ave., Williamson, W. Va., 235-5306, 235-1400 ext. 67
- Mayer, Edward Anthony, 1716 Marwood Place, Louisville, 451-3706
- Mayhew, William M., 906 Pawnee Drive, Elizabethtown, 765-2706, Ft. Knox 4-1948
- Maynard, William D., Route  $\pm$  1, Kenova, W. Va., 429-1660, 325-7641 ext. 232
- Melmige, James, Jr., Box 2117, Williamson, W. Va.
- Mercke, Frank R., 417 Lotus Way, Louisville, 896-8460, 634-9491
- Mercker, George E., 1106 Republic Bldg., Louisville, 451-8399, 584-2371
- Mestepey, James R., 152 Whispering Hills Blvd., Bowling Green, 781-3602, 842-8123
- Metcalf, Ken, Route  $\pm$  3, Munfordville, 524-9704, 524-9465
- Metzger, Don, 9312 Cloverwood, Fern Creek, 239-9813, 239-9813
- Meyer, Bud, 5319 Lilibet Court, Cincinnati, Ohio, 922-3459, 381-4300
- Mick, Paul E., Box 191, Marion, 965-2521, 965-4542
- Miller, Edward D., 6262 Rosalind Rd., Huntington, W. Va., 736-5379
- Miller, Harold R., 205 Robin Road, Russell, 836-3855, 836-9422
- Millerhaus, W. J. (Bill), 537 Elberon, Cincinnati, Ohio, 471-8467, 921-9722
- Minta, John H., 326 W. Carter, Clarksville, Ind., 283-8553, 582-3571 ext. 313
- Moody, William R., 2032 Oleander Dr., Lexington, 277-9622, 255-5612
- Moonexhan, James H., 810 Henry St., Franklin, 586-4989, 586-4451
- Moore, Franklin, 5351 Whitmore Drive, Cincinnati, Ohio, 922-8317, 621-8770
- Moore, Larry, Highrail Tr. Park, Lot 48, Bowling Green, 842-6883
- Moore, Robert, Jr., 441 Forest Ave., Erlanger, 341-6837, 563-1100
- Mordica, William A., 800 Edgewood Ave., Ashland, 324-7741
- Morgan, Richard, Route  $\pm$  6, Box 64, London, 864-6511, 864-6240
- Morris, Jerry, 2548 Harrison, Paducah, 443-2189, 335-3131
- Morrison, Clifton D., Route  $\pm$  2, Box 96, Milton, W. Va.
- Morrissev, Rockne, 2012 Trentwood Circle, Dayton, Ohio, 433-3304, 433-3305
- Morse, Richard K., 163 N. Deepwood, Radcliff, 351-3748, Ft. Knox 624-4454
- Moss, Howard A., Box 1042, Paducah, 898-3168, 442-4474
- Mounts, David G., 217 Marlene Drive, Evansville, Ind., 423-6930, 423-7832
- Mullannix, Walter Wayne, 3521 Rocky Hill Terrace, Lexington, 272-5153, 233-2000 ext. 2395
- Mulliken, David K., Box 2619, Pikeville, 437-7512, 432-1486
- Mullins, Charles E., Schultz Road, South Shore, 932-3388, 836-5931
- Murray, Thomas, 25 Ashton Road, Ft. Mitchell, 331-1891, 961-1691
- Nalley, Donald M., 3404 Lansdowne Drive, Lexington, 277-8472
- Nassida, Frank R., 108 Buckwood Dr., Richmond, 623-9209
- Neal, Gene, 3648 SR 132, Batavia, Ohio
- Nethercutt, Bill, 82 Sycamore St., Huntington, W. Va.
- Nickell, Duane, 2009 Broad, Paducah, 444-6095, 543-7434
- Noland, Douglas, 305 Herndon Ave., Stanford, 365-2609, 365-2619
- Nolan, Michael Bruce, 36 W. Morgantown, Bowling Green, 842-8978, 842-2411
- Nord, Bertrand J., 3006 Falmouth Drive, Louisville, 459-6596, 459-1505
- Norwood, Donald V., 814 Strawberry, Franklin, 586-5119, 586-4636
- Norwood, Thomas, R., 811 Henry St., Franklin, 586-3614, 586-3541
- Oldham, Ben Richard, 3360 High Hope Road, Lexington, 272-1678
- Omar, Max G., 1009 Walnut Street, Fulton, 753-3316
- Omer, Harold G., 150 N. Crestmoor, Louisville, 896-4170, 778-1659
- O'Nan, Norman, Route  $\pm$  1, Henderson, 827-3968, 826-9578
- O'Neal, Bud, 3628 Kelly Way, Louisville, 458-7940, 895-9247
- Orem, Dale Linton, 409 Chippewa, Jeffersonville, Ind., 283-8225, 636-4151
- Osborne, Lonnie, Box 2224, Pikeville, 639-4049, 432-3413
- Osborne, Ted G., Box 806, Lexington, 266-6152, 266-6152
- Osting, James E., II, 7518 Yorktown Road, Louisville, 368-9631, 634-3611 ext. 340
- Osting, Lawrence J., 1221 Bates Court, Louisville, 451-2070
- Pace, Donald, 2023 Deauville, Lexington, 252-6535, 255-0398
- Paek, Keith, 510 Jackson St., London, 864-7594, 864-5240
- Padgett, R. K., 112 Richardson Drive, Somerset, 678-5485, 678-4141
- Page, James N., P. O. Box 64, Pineville, 337-3814, 337-3814
- Pardue, Israel L., 1005 South 28th St., Louisville, 772-2488, 774-6431
- Parker, Bob L., 8602 Honor Ave., Louisville, 969-9090, 587-1121 ext. 586
- Parker, Francis V., Rosemont Ave., Providence, 667-2224, 639-2651
- Parslev, Clyde E., Route  $\pm$  2, Providence, 667-2524, 821-9004
- Pate, Lloyd W., 608 Ronnie Road, Madison, Tenn., 895-3522, 895-5472
- Patterson, William C., 419 Henry St., Greensburg, 932-4738, 932-4211
- Paxton, Gary R., Route  $\pm$  2, Versailles Road, Lexington, 252-0570, 252-0570
- Peeno, Harry R., 124 Morris Rd., Lookout Heights, 331-1981
- Pegausch, William E., 301 Terrace Drive, Mayfield, 247-5932, 247-2267
- Perkins, Ronnie L., Upton, 373-5051, 769-2311
- Perry, Alfred H., 2 Karyn Court, Barbourville, W. Va.
- Perry, James W., 708 Spring Street, St. Albans, W. Va.
- Phinps, James M., P. O. Box 285, Heidrick, 546-6344, 546-4185
- Pierce George W., Jr., 2807 S. Va. St., Hopkinsville, 886-8098, 886-6325
- Pietrowski, Paul, 108 Bishop St., Corbin, 528-6391, 528-1630
- Pinson, Eugene, Route  $\pm$  2, Box 171A, Ashland, 928-6228, 324-3101
- Pitman, Spencer R., Wayne St., Science Hill, 423-3115, 678-4519
- Poole, William F., 118 Ridgeway Ave., Louisville, 893-3863, 452-4556
- Porco, Kenneth John, 3924 Layside Drive, Louisville, 459-3455, 458-3281
- Porter, Clarence, 3855 Grace St., New Boston, Ohio, 456-6015, 456-4559
- Powers, Clark V., 716 Link Ave., Paris, 624-2214, 624-1231
- Powers, Elmer, 1017 North Main St., Barbourville, 546-6613, London 864-2701
- Primm, James T., Lafayette Road, Hopkinsville, 885-9483
- Puckett, Michael, Rt. 1, Box 537, Pikeville, 437-4436
- Pugh, Roy D., 3510 Barclay Drive, Jefferstown, 267-5513, 964-5996
- Quehl, Harry (Bud), P. O. Box 309, Princeton, 365-2419, 365-2620
- Ramey, Roy, 312 N. Central Ave., Prestonsburg, 886-2208, 886-2284
- Randall, Leroy (Lee), Route  $\pm$  2, U. S. 27, Alexandria, 694-6446, 635-2191
- Rapp, Lowell D., 1416 South 4th St., Ironton, Ohio, 532-9575
- Rapp, William C., 1836 Woodland Dr., Ironton, Ohio, 532-1983, 532-7245
- Raque, Ronald, 5509 Pattie Lane, Louisville, 964-2350, 637-9171
- Rascoe, Robert B., 4621 Nashville Road, Bowling Green, 842-2360, 745-3357
- Rawdon, Richard M., Jr., 605 S. Broadway, Apt.  $\pm$  1, Georgetown, 863-4897, 863-0140
- Ray, Bob, 407 Leyton Ave., Louisville, 425-7654, 425-7654
- Ray, Collis R., 809 North 32nd St., Paducah, 442-2146, 442-1979



- Ray, Shirley G., 4521 Old Hartford Road, Owensboro, 684-8963, 684-0104
- Read, Frederick K., 1338 Greenup, Covington, 431-5197, 431-5197
- Reddington, Jim, 3824 Glenside Place, Louisville, 452-9689
- Reed, Gordon (Moe), 22 Riverside Parkway, Fort Thomas, 441-4946, 312-678-8763
- Reece, Jerry T., 1992 Spring Station Drive, Lexington
- Renfro, James H., 4035 Court Ave., Paducah, 443-6611, 444-6311
- Rhodes, Cecil, Barbourville, 546-4777
- Richardson, William H., 205 Fields Cliff Drive, Whitesburg, 633-7217, 633-2339
- Riggs, G. Dennis, 3131 Sudbury Lane, Louisville, 451-1278, 426-1767
- Ring, Bill, 481 Rookwood Parkway, Lexington, 299-7089, 255-8492
- Roberts, James E., 1019 Pawnee Drive, Elizabethtown, 765-4739, 769-2311
- Robinson, D. Blake, P. O. Box 2462, Pikeville, 432-3269, 437-4234
- Robinson, Don L., 2012 Poplar St., Kenova, W. Va., 453-3860- JA 9-7191
- Rodgers, Tom H., 327 North Scott, Madisonville, 821-7312, 338-3800
- Roe, Doyle "Buddy", Jr., Isom, 633-2973, 633-2339
- Rogers, Selbert A., Prestonsburg, 886-6297, 886-3438
- Roeckers, Bernie, 2733 Caledon Lane, Cincinnati, Ohio, 231-2603, 831-2990
- Rogers, Eldridge, 310 Talbert, Hopkinsville, 885-5571, 886-3921
- Rolph, Harold J., 915 South 7th St., Ironton, Ohio, 532-4036, 532-3231
- Rose, Robert L., Jr., 9806 Mary Dell Lane, Louisville, 239-0059, 778-4421
- Rosen, William H., Box 2197, Williamson, W. Va., 237-1092
- Rupp, Larry D., 3309 Wellingham, Louisville, 451-3350, 452-3583
- Russell, Gary E., 2112 Gregory Drive, Henderson, 827-2437
- Russell, Joe A., Box 109, Russellville, 726-6983, 726-9531
- Russell, Kenneth, Route #1, Box 119, Millfield, Ohio, 614-592-4559 (Bus.)
- Russman, Godfrey F., Jr., 1041 Goss Ave., Louisville, 969-2175, 635-7426
- Rutherford, Floyd L. R., Box 151, Belfry, 353-4243
- Sale, Jack, 604 12th St., Huntington, W. Va.
- Sammons, Terry L., 4308 Burnt Cedar Lane, Louisville, 964-0852, 587-1121 ext. 252
- Sanders, Mel, 4200 Kimberly Court, Paducah, 442-3650, 564-4081
- Sapp, Edward, 2806 Dell Brooke Ave., Louisville, 458-8989, 452-3675
- Satterly, Grant, 832 Shelby St., Frankfort, 223-5810
- Saturley, Randall, P. O. Box 682, Henderson, 826-6939, 826-9153
- Saylor, Carlee, Route #6, Murray, 753-7979, 924-5602
- Schmidt, Henry R., 3509 Lockleer Rd., Louisville, 937-3625, JU 3-3885
- Schmidt, Thos. C. Sr., 6710 Bahama Lane, Louisville
- Schmitt, K. F., 710 E. Walnut, Louisville
- Schmitt, Nicholas G., 1619 Deer Park Ave., Louisville
- Schmitt, Paul E., 3864 Darlene Dr., Louisville, 778-5355, 772-3656
- Schoenbaechler, Richard J., 5612 Indian Oaks #2, Louisville, 964-0293, 969-3271
- Schuble, Charles E., 2352 Ashwood, Louisville, 459-1774, 636-1431
- Schutte, Joe, 2313 Paddock Lane, Louisville, 448-7565, 583-4413
- Schwetschenau, Paul J., 6050 Kardon Court, Cincinnati, Ohio, 931-3548, 243-3382
- Sconce, John W., 162 E. Main St. Lynch, 843-2250
- Scott, "Bill" W. L., 1816 McDonald Rd., Lexington, 278-2844, 254-1315
- Seale, Frank E., 1001 Tates Creek Rd., Lexington
- Selvy, Curt, 103 Steele, Corbin, 528-4677, 528-4677
- Shanks, Thomas E., 3113 Vogue Ave., Louisville, 454-4203, 582-5514
- Sharp, Ronnie, 121 South 21st St. Middlesboro, 248-3916, 337-3093
- Shaughnessy, Bernard, 2129 East Lane, Louisville, 448-4923, 583-4354 ext. 21
- Shaw, Earl, 121 Haagan Court, Lancaster, 792-2370, 548-3391
- Shewmaker, Wayne, 206 W. Meadow Drive, Clarksville, Tenn., 647-7351
- Shumaker, Thurman, Route #2, Princeton, 365-9479, 762-4624
- Simms, Clarence E., 43 East Ridge, Newport, 261-0735, 243-3104
- Simpson, Olando J. (Bill), Appalachian Reg. Hosp., Hazard, 436-3111, ext. 40, 436-3111, ext. 10
- Sizemore, Aster, 29 Sunvalley Terrace, Hazard, 436-3402, 436-2107
- Sligh, Jim, 607 Sherwood Rd., Cynthiana, 234-4345, Mt. Olivet 724-2301
- Sloan, Wallace, 419 Oread Rd., Louisville, 895-1126, 583-0621
- Slone, Earl Dean, Route #1, Box 104, Corbin, 528-4197, 528-9035
- Small, David E., 2216 Jawlyn Rd., Louisville, 267-5360, 895-6460
- Smith, Bill H., 7003 Sun Valley Drive, Valley Station, 937-7192, 587-6035
- Smith, William E., 4122 St. John's Terrace, Cincinnati, Ohio, 791-3082, 853-3544
- Snyder, Bernard L., 1253 E. Burnett Ave., Louisville, 637-6989
- Somerville, Robert J., 6852 Green Meadow Circle, Louisville, 895-8003
- South, Stanley P., Route #3, Winchester, 824-6132, 744-4812
- Spath, William J., 2922 White Plains Rd., Louisville, 452-9637, 584-5209
- Spaulding, Johnny R., P. O. Box 101, Catlettsburg, 325-8511 ext. 326 (Bus.)
- Spurlin, Gaylan, Route #1, Greenville, 338-3255, 338-3255
- Staley, Jerry, 1117 Inca Trail, Georgetown, 863-2775, Lexington 254-7862
- Stark, Dennis W., 215 Tenth St., Carrollton, 732-5488
- Starling, Edward, 819 Vinson St., Williamson, W. Va.
- Staten, Joseph B., 4303 Wyola Court, Louisville, 458-7454
- Stephens, Earl T., 811 Raceland Ave., Raceland, 836-9797, 932-3232
- Stephens, Herbert D., 133 First Street, West Ceredo, W. Va.
- Stephenson, Harry S., 1612 Hawthorn, Lexington, 299-1757, 233-8310
- Stevens, William D., 1033 Claiborne, Lexington, 272-2850, 299-1221 ext. 2223
- Stewart, Roy Edward, 1872 Dunkirk Drive, Lexington, 255-0448, 255-6812
- Stewart, William Wayne, 112 Seneca Trail, Louisville, 367-1450
- Stoup, Robert, 776 Washington Ave., Flatwoods, 836-8423, 325-8511 ext. 309
- Strain, Richard P., P. O. Box 472, Radcliff, 351-4306, 624-2214
- Straus, William, 212 Culpepper, Lexington, 266-6349, 252-2275
- Streible, Ronnie D., 306 Cheryl Ave., Vine Grove, 877-5891
- Strong, Arnett, 116 Kentucky Blvd., Hazard, 436-3938, 436-2141
- Stuedle, Raymond Sr., 1404 Girard Dr., Louisville, 425-3679, 893-3852
- Stumbo, Jack, 1146 Riverview Lane, Prestonsburg, 886-3363, 886-3080
- Sucietto, Dick, 6572 Gaines Road, Cincinnati, Ohio, 521-7495, 761-4130 ext. 310
- Sullivan, A. G., 1921 Goodwin Ave., Corbin, 528-1282, 528-9035
- Swartz, Joseph, 135 Lane St., Coal Grove, Ohio, 523-9349
- Swartz, Larry G., 1225 College St. B-203, Bowling Green, 843-6451, 843-6451
- Swinford, John, 106 South Elmarch, Cynthiana, 234-2562, 234-5821
- Sykes, Tommy C., Box 38, Elkhorn City, 754-5137, 437-6242
- Talbot, William G., III, Route #1, Paris, 465-4981, 987-2961
- Taylor, Charles G., 222 Demaree Drive, Bardstown, 348-9431, 336-9904
- Taylor, Dennis H., 1406 Hughes Ave., Murray, 753-4825, 753-5022
- Taylor, James R., 1901 Ballard St., Ashland, 324-4841, Ironton, Ohio 532-4325
- Thomas, Frank M., 629 1/2 South 44th St., Louisville, 774-2624
- Thomas, Raymond E., 212 Akin, Franklin, 586-6297, 586-3261
- Thomas, Raymond E., 1106 Main St., Sturgis, 333-2151
- Thompson, Jack, 2347 Saratoga Drive, Louisville, 452-9255
- Thompson, Thomas D., 97 Carran Drive, Ft. Mitchell, 341-1809, 581-1322 ext. 211
- Thompson, Victor N., 124 Garrard St., Covington, 261-7913, 381-2286
- Timmering, George E., 4109 Manner Gate Drive, Louisville, 450-2705, 459-2705
- Trapp, Charles, 34 Trapp Court, Alexandria, 635-9250, 635-9250
- Treas, Joe W., 609 Green St., Fulton, 472-1604, 472-1836
- Treibly, Charles E., 2015 Terril Lane #44, Louisville, 451-8448, 451-9301
- Timer, Norman E., 1927 Taffeta Drive, Valley Station, 357-4452, 896-9330
- Trombley, Norman J. Jr., 3685 King Arthur Circle, Lexington, 272-1100, 254-3358
- Turner, Charles W., 5516 Jeanine Drive, Louisville, 969-3019
- Tve, Josh, 225 College St., Barbourville, 546-3745
- Urlage, Richard, 822 Highland Ave., Ft. Thomas, 441-5513, 471-8120
- VanZant, Jim, Eox 602, Williamson, W. Va., 235-1443, 235-4244
- Varner, Ray G., 737 Kingston Rd., Lexington, 299-4145, 299-1221 ext. 5241
- Vaughn, Charles B., Sp. Tng. Co., 4th Tng. Bde., Fort Knox, 624-3558, 624-3558
- Vinciguerra, Philip, Pikeville College, Pikeville, 426-4532, 432-3161 ext. 210
- Vissman, Charles F., 3926 Graf Drive, Louisville, 458-8501, 587-1121 ext. 593

- Waddell, Billie, 128 Morris Road, Lookout Heights, 331-0932, 331-3672  
 Wagner, Jim, 3018 Dale Ann Drive, Louisville, 458-9060, 637-2563  
 Waide, Harry D., 973 Skyline Drive, Madisonville, 821-1139, 821-3870  
 Walker, Julian R., 670 Hill 'N' Dale Rd., Lexington, 277-7269, 451-5463  
 Walker, Paul R., Reservoir Hill, 10th & High St., 843-8893, 843-3249  
 Waller, Bobbie E., 309 Strathmore, Lexington, 299-6123, 299-6123  
 Wanchic, Nicholas, 1511 Forbes Road, Lexington, 255-1233, 255-6812  
 Ward, Tommy, Marsee Drive, Harlan, 573-4653, 573-3711  
 Warren, Bige R., Walker, 542-2224  
 Warren, Buist Buzz, 4043 Park Road, Fort Knox, 624-2098, 624-1231  
 Warren, Kenneth A., 45 Meadowview Drive, Louisville, 454-5001, 634-1551 ext. 275  
 Washaleski, Tom, 3914 Della Fay, Louisville, 964-4718, 964-6920  
 Washer, James P., 4119 Sun Flower, Louisville, 447-6817, 969-2391  
 Washer, Stan, 3205 Huberta Drive, Louisville, 447-3078, 582-8750  
 Weaver, Clyde Ivan, Box 254, Williamson, W. Va.  
 Weaver, Ray M., 3117 Bernard Drive, Edgewood, 341-2610, 341-8066  
 Webb, Dudley, 204 Bank of Commerce, Lexington, 254-7318  
 Webb, Keaton, P. O. Box 73, Atwood, Tenn., 662-5067, 784-3461  
 Weber, Thomas C., 1967 Goldsmith Lane, Louisville, 459-2733  
 Wedge, Paul (Denny), 1314 Utah Drive, Bowling Green, 842-6732, 781-1067  
 Weidner, Paul R., 3262 Bellaere Court, Cincinnati, Ohio, 922-8100, 542-3300  
 Welch, Robert J., Jr., 1406 Beech Ave., Cincinnati, Ohio, 471-3408, 281-0783  
 Werkowitz, Jack, 4614 Miller Road, Blue Ash, Ohio, 791-5382  
 Werner, John M., 2001 Collier Rd., Henderson, 826-2593  
 Wheeler, Mell, 1019 Poplar St., Kenova, W. Va., 453-4613  
 Wickham, James Robert, 311 Cathedral Manor, Bardstown, 348-5282, 833-4611  
 White, John Stanley, 1517 Fairfax Drive, Ashland, 325-2090, 325-8511 ext. 253  
 Wilbert, Donald A., 4420 Santa Paula Lane, Louisville, 969-8733, 448-2761 ext. 222  
 Wilder, Jerry R., 467 Dorchester, Bowling Green, 843-1983, 745-2691  
 Williams, James H., Elmwood Drive, South Shore, 932-4372 (Portsmouth, Ohio), 353-7440  
 Willis, Donald A., Box 5, Allen, 874-2485, 285-3949  
 Wilson, Louis O., 728 Wellington Way, Lexington, 277-6374, 252-7585  
 Wilson, Nellus R., 223 Iroquois Drive, Paducah, 554-1910, 443-6515  
 Wise, Jack, 209 Pocahontas, Georgetown, 863-3948, 863-0772  
 Witsken, Roger L., 4321 St. Dominic Drive, Cincinnati, Ohio, 471-6312, 762-6723  
 Wood, Furman Blake, Route = 2, Box 163, Elkview, W. Va.  
 Wood, Walter A., 562 Stonehaven Drive, Lexington, 299-8364, 233-2000  
 Wray, Robert F., 29 Belle Monte, Ft. Mitchell, 341-1778, 292-2261  
 Wright, C. Dale, 223 Devonport Drive, Lexington, 252-1524, 258-9000 ext. 3494  
 Wright, Howard L., 309 Forest Ave., Erlanger, 341-4396  
 Wright, Jim, 121 Showalter Drive, Georgetown, 863-3628, 233-2000 ext. 2520  
 Wright, John David, Ponderosa Mobile Home Ranch, Georgetown, 885-9915, 886-3921  
 Wuertz, John, 2834 Hoock Ave., Louisville, 454-0631, 267-8311 ext. 313  
 Wulfeck, Jim, 3125 Lawrence Drive, Ft. Mitchell, 342-8225, 341-5351  
 Yarbrough, Roy D., Jr., 197th Mil. Police Detachment, Confiner Facility, Fort Sil, Okla.

(Continued on Page Twelve)

**Attention, Football Officials!**

Assistant Commissioner Billy Wise in his Pineville and Hazard football clinics gave an incorrect interpretation of Rule 4-2-2a, based on information which he had received from the National Federation office prior to the clinics. A bulletin correcting the interpretation reached the K.H.S.A.A. office in time for the correct interpretation to be given at the subsequent clinics.

It had been previously stated in the first two clinics that, on an extra point attempt, if the holder fumbles the ball while his knee is on the ground, upon regaining possession he may still

hold for a kick, or he may stand up and run or pass the ball. **The correct interpretation** by National Federation Secretary Clifford B. Fagan is that, if the holder fumbles the ball while his knee is on the ground, upon gaining possession he may still hold for a kick **but he may not get up and legally advance.**

**K.H.S.C.A.**

Irvine, Kentucky  
 April 7, 1970

Executive Committee  
 Kentucky High School Coaches Association  
 Louisville, Kentucky  
 Gentlemen:

I have made an examination of the records of the Kentucky High School Coaches Association account covering the period February 27, 1969 to February 27, 1970, per the request of your Secretary, Mr. Joe Ohr.

Consolidated and classified receipts and disbursements are shown on the attached schedule of income and expenses. All receipts have been traced into the bank account and all disbursements shown have been verified by canceled checks.

The balance of \$14,885.64 has been verified as being on deposit in the Union Bank & Trust Company, Irvine, Kentucky, as of the close of business on February 27, 1970.

We believe the attached schedule properly reflects the status of this account for the period covered.

Respectfully submitted,  
 William Sexton, Jr., Auditor

**KENTUCKY HIGH SCHOOL COACHES ASSOCIATION  
 SCHEDULE OF INCOME & EXPENSES FOR THE PERIOD  
 FEBRUARY 27, 1969 TO FEBRUARY 27, 1970**

<b>RECEIPTS:</b>	
Membership Dues .....	5 4,558.00
Total Receipts .....	5 4,558.00
Plus: Balance in Bank on February 27, 1969 .....	12,623.93
<b>TOTAL TO ACCOUNT FOR .....</b>	<b>\$17,181.93</b>
<b>DISBURSEMENTS:</b>	
Postage & Envelopes .....	123.08
Secretarial Help .....	10.00
Annual Audit—Wm. Sexton, Jr. ....	35.00
Delegates Expenses to KEA—Joe Ohr ..	25.00
Delegate Expense to National Rules Meeting .....	136.11
Expenses to Executive Meeting for 16 persons .....	334.41
Printing .....	170.56
Insurance—Bond for Treasurer .....	31.00
Filing Fee—Secretary of State .....	2.00
Executive Meeting Meals—Blue Boar ..	43.59
Joe Ohr—All Star mileage expense ..	21.75
Lawrence Gilbert—Expenses .....	58.20
Flowers .....	15.75
Joe Ohr—Collection fees 1969-70 .....	1,124.50
Trophies .....	165.34
Total Disbursements .....	2,296.29
<b>BALANCE ON FEBRUARY 27, 1970 .....</b>	<b>\$14,885.64</b>
Balance on deposit in Union Bank & Trust Company, Irvine, Kentucky, on February 27, 1970, per Bank Statement .....	\$14,885.64

Irvine, Kentucky  
 April 7, 1970

Executive Committee  
 East-West All Star Football & Basketball Games  
 The Kentucky High School Coaches Association  
 Louisville, Kentucky  
 Gentlemen:

At the request of your Secretary, Mr. Joe Ohr, I have made an annual examination of the records of your ALL STAR account covering the period March 1, 1969 to February 27, 1970.

Consolidated and classified receipts and disbursements are shown on the attached schedule of receipts and disbursements. The bank balance of \$22,446.48 has been verified as being on deposit in the First Security National Bank & Trust Company, Lexington, Kentucky.

Net receipts have been verified as deposits into the Bank and all disbursements have been substantiated by canceled checks.

There is attached hereto a separate schedule of the four Savings Accounts showing the financial institution involved and the balances in each account. This is self-explanatory and the balances shown have been verified with the appropriate savings firm.

I believe this letter and the attached schedules properly reflect the various transactions for the period involved.

Respectfully submitted,  
 William Sexton, Jr., Auditor



**EAST-WEST ALL STAR FOOTBALL & BASKETBALL GAMES OF THE KENTUCKY HIGH SCHOOL COACHES ASSOCIATION**

Schedule of Receipts and Disbursements for the period  
March 1, 1969 to February 27, 1970.

**RECEIPTS:**

**Receipts from All-Star Games	-----	\$13,020.60
Program Receipts	-----	310.91
Interest Income—Savings Account =5041	-----	500.00
Total	-----	\$13,831.51
Plus: Balance in Bank on 2-29-69	-----	19,710.78

**TOTAL TO ACCOUNT FOR** ----- **\$33,542.29**

**DISBURSEMENTS:**

Printing	-----	312.95
Tickets	-----	50.00
All-Star Insurance	-----	667.00
Change advanced to U. K.	-----	
Ticket Office	-----	1,600.00
All-Star Travel & Meals	-----	1,223.91
Meals—All Stars	-----	2,449.48
Ambulance Service	-----	75.00
Housing—All Stars	-----	919.70
Misc. Expenses—All Stars—	-----	
Estill Branham	-----	467.64
Kentucky Sales Tax	-----	586.15
Manager's Salary—Estill Branham	-----	800.00
Coaches Salaries	-----	1,000.00
Photographs	-----	66.35
Awards for All Stars	-----	779.63
Salaries for Trainers	-----	98.00

Total Disbursements ----- **11,095.81**

**BALANCE ON FEBRUARY 27, 1970** ----- **\$22,446.48**

Balance on deposit in First Security National Bank & Trust Company, Lexington, Kentucky, as per Bank Statement of February 27, 1970 ----- **\$22,446.48**

\*\*Receipts shown are NET receipts. Total receipts amounted to \$13,324.60 less \$304.00 paid to University of Kentucky Athletic Association for expenses.

**EAST-WEST ALL STAR FOOTBALL & BASKETBALL GAMES**

Kentucky High School Coaches Association  
**SCHEDULE OF SAVINGS ACCOUNTS**

- Columbia Federal Savings & Loan Association  
Covington, Kentucky  
Account No. 9315  
Balance as of Dec. 31, 1969 ----- \$ 5,640.97
- Central Bank & Trust Company  
Lexington, Kentucky  
ALL-STARS Account — Certificate No. 5041  
Balance as of April 7, 1970 ----- 10,000.00
- Citizens Union Bank & Trust Company  
Lexington, Kentucky  
ALL-STAR Account  
Balance as of March 31, 1970 ----- 5,794.14
- First Security National Bank & Trust Company  
Lexington, Kentucky  
ALL-STARS Account No. 23588-7  
Balance as of March 31, 1970 ----- 11,580.39

Total Savings Accounts ----- **533,015.49**

I hereby certify that the above balances have been verified by telephone with the above institutions as being on deposit as of this date, April 7, 1970.

William Sexton, Jr., — Auditor

**REGISTERED FOOTBALL OFFICIALS**

(Continued from Page Eleven)

- Yost, C. W., 351 Oaklawn, Brandenburg, 422-2661, Stamford, Conn., 356-3200  
Young, Jack T., 121 Smith Ballara, Richmond, 623-4589, 623-2234  
Zimmer, Tom, 114 Summit Drive, Ft. Mitchell, 341-4566, 431-4272  
Zlamal, Raymond K., Cooperstown, Bldg. B #14, Lexington, 258-9000  
Zogg, Joe F., Box 1218, Owensboro, 683-0152, 683-6425

**BOARD MINUTES**

(Continued from Page One)

70 year. Copies of the audit, recently prepared by Huet L. Johnson, Certified Public Accountant, were presented to members of the Board.

The Commissioner, speaking for the Building Committee, stated that Attorney Calvert T. Roszell had filed with the Fayette City-County Planning Commission an application for a zoning change which would allow the K.H.S.A.A. to construct its proposed new building on Cooper Drive.

Messrs. Davis and Sanford reported on the recent National Federation Annual Meeting which had been attended by the K.H.S.A.A. administrative staff and most Board members. Mr. Davis stated that most of the program had been very good, and that the speakers at the general sessions had been quite outstanding. The Commissioner reported on the business meeting of the National Council.

The Commissioner stated that several high school competitors who possibly might have represented K.H.S.A.A. member schools in one or more athletic contests had been engaged in the United States Youth games, either at the state, regional, or national level. He asked that he be given delegated authority by the Board of Control to restore to eligibility any participant who may have made himself or herself ineligible by taking part in the United States Youth games. James T. Dotson moved, seconded by W. H. Crowdus, that the request of the Commissioner be granted. The motion was carried unanimously.

President Davis announced the personnel of four committees, stating that the membership of the Swimming, Wrestling, and Gymnastics committees would be determined at a later date. The committees as announced for 1970-71 are as follows:

Personnel and Policy—Chairman Richard Vincent, James T. Dotson, Roy L. Winchester (The President and the Commissioner are ex-officio members of this committee.)

Building—Chairman Tom Mills, J. C. Cantrell, J. B. Mansfield (The President and Commissioner are ex-officio members of this committee.)

Trophy—Chairman J. B. Mansfield, Theo. A. Sanford, Billy V. Wise (The President is an ex-officio member of this committee.)

Retirement—Chairman W. H. Crowdus, Morton Combs (The President is an ex-officio member of this committee.)

James T. Dotson moved, seconded by Richard Vincent, that all bills of the Association for the period beginning June 1, 1970, and ending June 30, 1970, be allowed. The motion was carried unanimously.

There being no further business, the meeting adjourned.

**KAPOS NEWS**

**ATTENTION: Principals and Coaches**

Please announce to your cheerleaders and to your sponsor that there will be a one-day clinic for all cheerleaders and non-cheerleaders wishing to learn something about cheerleading.

If your squad did not get to attend a summer clinic, this is an opportunity for them to get some help from a well qualified teaching organization, the N.C.A. of Dallas, Texas; and, if your squad did get to attend a summer clinic, this is the opportunity to be evaluated as well as to learn some different routines.

KAPOS is hosting this clinic in order to help cheerleaders and to make money for their scholarship program.

A brochure giving more details of the clinic will be in the principal's office prior to the date of the clinic. In the meantime, be making your preparations to attend.

DATE — September 26, 1970

PLACE — Transylvania College, Lexington, Kentucky

COST — \$3.00 per cheerleader—Sponsors are admitted free. You are asked to bring a sandwich. Drinks and cookies will be free!

REGISTRATION — 8:00 A.M. to 9:00 A.M. Eastern Standard Time

TO: PRINCIPALS OF MEMBER SCHOOLS OF K.H.S.A.A.

SUBJECT: CATASTROPHE INSURANCE POLICY.

The following information about the catastrophe insurance coverage purchased by K.H.S.A.A. to cover athletes of member schools is published for your consideration. The coverage will commence July 1, 1970, for the school year 1970-71, and will be identical with the coverage for the current year.

**PERSONS COVERED:** Student athletes on teams of member schools of K.H.S.A.A. will be covered while practicing for or competing in K.H.S.A.A. approved inter-school athletic events or while traveling in a group directly to or from practice session or scheduled athletic event for the purpose of participating in such session or event.

**ACCIDENT MEDICAL EXPENSE BENEFIT:** Expenses incurred for treatment of a covered injury including necessary services of a licensed physician, hospital expenses subject to limit for daily room and board and general nursing care of normal charge for semi-private room, private duty nursing care by R.N. on order of physician and physio-therapy performed while hospital confined shall be covered within fifty-two (52) weeks following the accident causing injury provided treatment for such injury commences within thirty (30) days of the date of covered accident.

The first \$1000.00 of covered expenses, or the amount of such expenses as are covered under all other collectible insurance of the policyholder and insured, whichever figure is greatest, will be deducted from any claim paid hereunder. Subject to this provision, the Company will pay up to a maximum of \$10,000.00 except that when payment under the plan exceeds \$5000.00, further payment shall be 75% of the eligible charges.

**EXCLUSIONS:** No payment shall be made for herina, appendicitis, cardiac disease, diabetes, detached retina, osteomyelitis, malignancy or Osgood-Schlatters disease, or aggravation of a pre-existing condition, or for injuries connected with fighting or brawling.

**ADMINISTRATION:** The plan is administered by The Kingden Company. If further information is desired, the Company may be contacted.

*The Kingden Company* GENERAL AGENT

W. E. KINGSLEY

J. E. McCREARY, Mgr.

CHARLES C. PRICE

Life Department

121-123 LAFAYETTE AVENUE  
P. O. BOX 7100

LEXINGTON, KY. 40502

PHONE 254-4095



# 52 YEARS FOR ATHLETES

In August, 1918, our founder, Bill Hunt, was asked to help secure some uniforms for a football team so they could tell the spectators from the players.

For 52 years we at Hunt's have tried to serve the athletes by finding for them the best available equipment to serve their needs.

Today we feature and can supply immediate delivery on merchandise for any athletic or physical education need from our warehouse.

We have complete stock of the following items.

Football Shoes	.....	sizes 1 to 14
Basketball Shoes	.....	sizes 1 to 17
Football Pants	.....	sizes 22 to 52
Football Jerseys	.....	sizes 4 to 50
Football Shoulder Pads	.....	sizes Little League to 50
Basketball Jerseys	.....	sizes 10 to 50
Basketball Pants	.....	sizes Little League to College
Athletic Socks	.....	sizes 6 to 16
Football Helmets	.....	sizes Boys Extra Small to 8

Football—Rubber or Leather—Little League to Pro

Basketballs—Indoor or Outdoor—Biddy to Pro

Fair Play Scoreboards—Grade School to College

First Aid for prevention or treatment

We specialize in your problems.

Next day delivery to any school in Kentucky.

Call on our experience and service with your problems.

In Mayfield, 247-1941 COLLECT.

One of us can help you.

## HUNT'S ATHLETIC GOODS CO., INC.

CH 7-1941 — PHONES — CH 7-1942  
MAYFIELD, KENTUCKY