

9-1-1974

# The Kentucky High School Athlete, September 1974

Kentucky High School Athletic Association

Follow this and additional works at: <http://encompass.eku.edu/athlete>

---

## Recommended Citation

Kentucky High School Athletic Association, "The Kentucky High School Athlete, September 1974" (1974). *The Athlete*. Book 202.  
<http://encompass.eku.edu/athlete/202>

This Article is brought to you for free and open access by the Kentucky High School Athletic Association at Encompass. It has been accepted for inclusion in The Athlete by an authorized administrator of Encompass. For more information, please contact [Linda.Sizemore@eku.edu](mailto:Linda.Sizemore@eku.edu).

# THE KENTUCKY



# High School Athlete



Seal of N.F.S.H.S.A.  
(See Inside Cover)

Courtesy of Nat'l Fed.

Member Of National Federation of State High School Associations

Official Organ of the  
**KENTUCKY HIGH SCHOOL ATHLETIC ASSOCIATION**

SEPTEMBER 1974

## Football Districts and Regions

The Board of Control of the Kentucky High School Athletic Association set the football districts and regions for 1973 and 1974 as follows:

### Class AAA Region I

- District 1—**  
DeSales, Iroquois, Male, Shawnee, Trinity
- District 2—**  
Atherton, Bishop David, Central, duPont Manual, St. Xavier

### Region II

- District 1—**  
Butler, Doss, Pleasure Ridge Park, Valley, Western
- District 2—**  
Fern Creek, Jeffersontown, Marion C. Moore, Thomas Jefferson
- District 3—**  
Durrett, Fairdale, Jesse Stuart, Southern
- District 4—**  
Ballard, Eastern, Seneca, Waggener, Westport

### Class AA Region I

- District 1—**  
Bowling Green, Caldwell County, Christian County, Franklin-Simpson, Hopkinsville, Lone Oak, Mayfield, Marshall County, Paducah Tilghman
- District 2—**  
Apollo, Daviess County, Henderson, Henderson County, Madisonville-North Hopkins, Ohio County, Owensboro, Owensboro Catholic, Union County

### Region II

- District 1—**  
Adair County, Breckinridge County, Bullitt Central, East Hardin, Elizabethtown, Fort Knox, LaRue County, Marion County, Meade County, Nelson County, North Hardin, Oldham County, Shelby County, Warren Central
- District 2—**  
Bourbon County, Casey County, Danville, Harrison County, Jessamine County, Lincoln County, Scott County, Somerset, Woodford County

### Region III

- District 1—**  
Boone County, Campbell County, Conner, Covington Catholic, Dixie Heights, Highlands, Holmes, Lloyd Memorial, Newport, Newport Catholic, Simon Kenton
- District 2—**  
Bryan Station, Clark County, Franklin County, Henry Clay, Lafayette, Madison Central, Paul G. Blazer, Tates Creek

### Region IV

- District 1—**  
Bell County, Corbin, Cumberland, Evarts, James A. Cawood, Knox Central, Laurel County, Middlesboro, Rockcastle County, Russell County, Whitley County, Wayne County
- District 2—**  
Belfry, Boyd County, Breathitt County, East Carter, Greenup County, Hazard, Johnson Central, Leslie County, M. C. Napier, Prestonsburg, Russell, Whitesburg

### Class A Region I

- District 1—**  
Crittenden County, Fort Campbell, Fulton, Fulton County, Heath, McLean County, Murray, Reidland, Russellville, Todd Central, Trigg County, Webster County
- District 2—**  
Allen County, Barren County, Butler County, Campbellsville, Caverna, Clinton County, Cumberland County, Edmonson County, Gamaliel, Glasgow, Green County, Hancock County, Hart County, Metcalfe County, Taylor County, Tompkinsville, Warren East.

### Region II

- District 1—**  
Anderson County, Bardstown, Boyle County, Garrard County, Harrodsburg, Kentucky School for the Deaf, Mercer County, Washington County
- District 2—**  
Berea, Estill County, Frankfort, Georgetown, Madison, Millersburg Military Institute, Nicholas County, Paris, Sayre

### Region III

- District 1—**  
Beechwood, Bellevue, Beth Haven, Carroll County, Dayton, Eminence, Henry County, Kentucky Country Day, Ludlow, Owen County, Shelbyville, Trimble County
- District 2—**  
Bath County, Fairview, Fleming County, Lewis County, Louisa, Maysville, Montgomery County, Morgan County, Mt. Sterling, RaceLand, Rowan County, West Carter

### Region IV

- District 1—**  
Harlan, Lynch, Lynn Camp, Pineville, Williamsburg
- District 2—**  
Elkhorn City, Fleming-Neon, Jenkins, Johns Creek, Mullins, Paintsville, Phelps, Pikeville, Virgie, Wheelwright

---

## The Federation Seal

(On The Cover)

**The National Federation Seal** was designed as a heraldic coat of arms which may be displayed with prideful enjoyment as long as deeds are consistent with the high purposes on which the organization was founded.

A condensed explanation of the symbols in the seal follows:

**The Seal is a Circle** to encourage those who make up the working machine to be a closely knit group with a friendly and cooperative regard that characterizes a family circle.

**The National Federation Name** is an arch, the engineer's symbol of strength. The arch is firmly notched in the bedrock base made up of member State High School Associations.

**The Shield** is the traditional badge of courage.

**The Four Stars** honor the four original member state associations of Illinois, Iowa, Michigan and Wisconsin, whose leaders were far sighted and courageous enough to aim at new horizons.

**The Map** shows that the organization is national in scope. The maple leaves are from the Canadian flag, the standard of the provinces in Canada.

The "State" in the shield is prominent to in-

(Continued on Page Three)



# The Kentucky High School Athlete

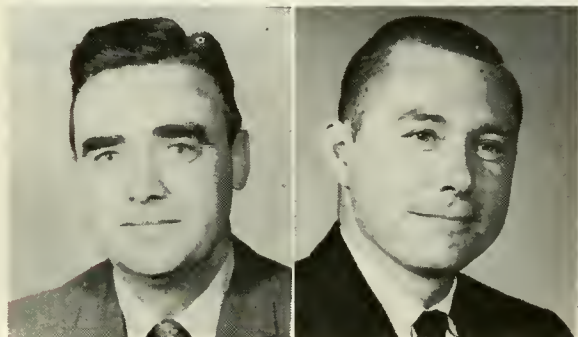
Official Organ of the  
Kentucky High School Athletic Association

VOL. XXXVII

SEPTEMBER, 1973

\$1.00 Per Year

## K.H.S.A.A. Board of Control Officers — 1974-75



W. P. Wheeler  
President

Louie Martin  
Vice-President

W. P. Wheeler, Principal of the Daviess County High School, Owensboro, was elected President of the Board of Control at the summer meeting of the directors, held on July 26, 1974. Louie Martin, Principal of the Corbin High School, Corbin, was named Board Vice-President.

W. P. Wheeler was born in McLean County. He is a graduate of the Calhoun High School. He received his B.S. degree from Western Kentucky State Teachers College in 1949. He received his M.A. degree from this institution in 1954. He has done post-graduate work at both Peabody and Indiana University.

In 1949 Mr. Wheeler started his coaching career at the Utica High School, later becoming principal of the school. In 1959 he became principal of the Daviess County High School. He did his military service in the 13th and 82nd Airborne Division (Paratrooper).

In 1962 Mr. Wheeler was selected "Outstanding Young Man of the Year" for Owensboro and Daviess County by the Owensboro Jaycees. He is active in church and civic work, serves on the Board of Directors of Junior Achievement, and sponsors a "Hunting and Fishing" club at his school.

Louie Martin is a native of Letcher County, Kentucky. In 1957, he received an A.B. Degree from Morehead State University, and in 1960 he received the M.A. Degree from Indiana University. Eastern Kentucky University awarded him a Leadership Certificate.

Mr. Martin was a teacher and guidance counselor at Fleming-Neon High School for five years prior to becoming an area guidance supervisor with the State Department of Education. For the past six years, he has served as principal of Corbin High School, Corbin, Kentucky. His wife, the former Della Deloyse Jones of Knott County, is an elementary teacher in the Corbin City School System. They are the parents of one daughter, Lyesbeth Anne.

## Attention Officials!

The attention of all registered K.H.S.A.A. football, basketball, wrestling and baseball officials is called to By-Law 28, Section 9, which provides that the official shall be supplied with an emblem which he shall wear on his shirt sleeve. The emblem is to be worn on the left shoulder shirt sleeve approximately one and one-half inches below the shoulder seam. The shape and make-up of the emblem has been changed this year. The rectangular emblems are of these colors; green for the "registered" official, red for the "approved" and blue for the "certified". It does not have the year on it so that its use is not limited to a single season unless the status of the official changes.

Recommended uniforms are as follows:

Football—black and white striped shirt (long or short sleeves), black baseball cap with white piping, white knee pants, black belt, black stockings, black shoes and laces;

Basketball (Boys)—black and white striped shirt (short sleeves, long sleeves by special permission), black trousers, black belt, black shoes and laces;

Basketball (Girls)—For the 1974-75 season either the blue and white or the black and white vertically striped shirt with short sleeves may be used. Collared shirts are recommended (no turtle-necks). Black or blue culottes, shorts, or skirts may be worn. **For the 1975-76 season the shirt shall be black and white striped and the culottes, shorts or skirts shall be black.** The shoes shall be black with black laces.

Baseball—navy blue or black trousers, black athletic leather shoes (not football shoes), navy blue coat or jacket, navy blue shirt if working coatless, white shirt if wearing coat or jacket, white shirt on bases if all base umpires are dressed the same, umpire's navy cap (no player caps), indicator and mask of choice, inner protector or inflated protector (inflate type if official desires to purchase), black belt, black shoe laces, black tie with white shirt.

## NEW FILMS

### BASEBALL TODAY

Baseball Today is a 16mm, 28 minute sound, color (or black and white) motion picture produced under the direction of the National Federation of State High School Associations and approved by the National Federation's Baseball Rules Committee.

Special Visual Effects and interesting play situations aid the player, coach and umpire in gaining a better understanding of the rules. Baseball fans will also find this excellent teaching film will add a great deal to their appreciation and enjoyment of the great American pastime—baseball.

Baseball Today opens with an interesting interview with ace New York Met relief pitcher, Tug McGraw. It features outstanding umpires demonstrating proper umpiring mechanics and  
(Continued on Page Four)

Published monthly, except June and July, by the  
Kentucky High School Athletic Association  
Office of Publication, 560 E. Cooper Dr., P. O. Box 7502,  
Lexington, Ky. 40502

Second class postage paid at Lexington, Kentucky  
Editor ----- JOE B. MANSFIELD  
Assistant Editor ----- JEAN BATSEL  
Assistant Editor ----- TOM MILLS  
Assistant Editor ----- LOUIS STOUT  
Assistant Editor ----- BILLY V. WISE

Lexington, Kentucky

#### BOARD OF CONTROL

President ---- W. P. WHEELER (1971-1975) Owensboro  
Vice-President ---- LOUIE MARTIN (1972-1976) Corbin  
Directors— Andrew J. Fultz (1972-1976), Olive Hill;  
Arthur R. Hawkins (1972-1976), Mt. Sterling; George E.  
Sauer, Jr. (1974-1978), Louisville; Frank B. Simpson (1972-  
1976), Louisville; Ray Story (1974-1978), Radcliff; James R.  
Williams (1973-1977), Somerset. Conley Manning, State  
Dept of Education representative.  
Subscription Rate \$1.00 per year

### *From the Commissioner's Office*

#### Basketball Clinics

The 1974-75 required rules meetings for basketball officials and head coaches will be conducted by Assistant Commissioner Billy V. Wise. Other members of the coaching staff, scorers and timers are urged to attend. The dates, times and sites for these meetings are as follows:

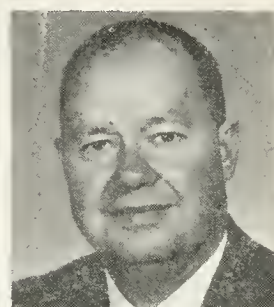
- October 8, Bell County High School, Pineville, 7:00 P.M.
- October 9, Hazard High School, 7:00 P.M.
- October 10, Prestonsburg High School, 7:00 P.M.
- October 11, Lee County High School, Beattyville, 7:00 P.M.
- October 14, Morehead State University, 7:00 P.M.
- October 15, Community College, Ashland 7:00 P.M.
- October 16, Mason County High School, Maysville, 7:00 P.M.
- October 17, Holmes High School, Covington, 7:00 P.M.
- October 20, Apollo High School, Owensboro, 2:30 P.M.
- October 21, Henderson County High School, Henderson, 7:00 P.M.
- October 22, Paducah Tilghman High School, Paducah, 7:00 P.M.
- October 23, Murray State University, 7:00 P.M.
- October 24, Hopkinsville High School, 7:00 P.M.
- October 28, W.K.U., Downing Student Center, Bowling Green, 7:00 P.M.
- October 29, Elizabethtown High School, 7:00 P.M.
- October 30, Stouffers Inn, Louisville, 7:00 P.M.
- October 31, Henry Clay High School, Lexington, 7:00 P.M.
- November 4, Somerset High School, 7:00 P.M.

The Association plans to conduct additional clinics at the same sites on the same afternoon for coaches of girls' teams and officials who will be refereeing girls' games. The basic rules and mechanics of officiating will be discussed. Further announcement concerning these meetings will be sent to each school when the arrangements are completed.

#### Newly Elected Board Members



Cecil Reid



Fairce O. Woods

Prin. Cecil Reid, Symsonia High School, has been elected to the Board of Control to fill out the unexpired term of Howard Crittenden. Mr. Reid attended Symsonia High School and did his college work at Murray State University obtaining an A.B. Degree in 1934 and an M.A. in 1938. He taught and coached at Burnsville High School in Mississippi in 1934-35 and for the next three years.

Cecil was with the Graves County Health Department from 1939 to 1947 when he became principal of the twelve-grade school at Symsonia and also served as basketball coach the first six years.

Mr. Reid registered as a basketball official in 1938 and earned the certified rating which he held for many years until he quit officiating. He was of the first officials in the state to receive this rating.

Mr. Reid married Virginia Spears in 1936 (deceased 1968) and has one son, Larry Dale Reid. He is a past president of West Kentucky Administrators Association and past Master of Symsonia Masonic Lodge. He is a member of the Murray State Alumni Council, Symsonia Methodist Church Kentucky Association of School Administrators, the K.E.A. and N.E.A.

Mr. Fairce O. Woods, Principal of Fleming County High School, has been elected to the Board of Control to represent Regions 9 and 10. He will complete the unexpired term of Mr. Tom Creamer. Mr. Woods was born in Floyd County, attended Garrett High School and earned an A.B. Degree at Kentucky Wesleyan College. In his senior year, 1949, he was chosen Who's Who in American Colleges and Universities and received Honorable mention for the All American Basketball Team. After teaching and coaching at Deming High School in Mt. Olivet for two years he assumed the same position at Breathitt High School where he remained until 1967 except for two years, 1952-54, in the service.

Fairce, while coaching at Breathitt County the fourteen years, won 394 games and lost 67 for an 84% winning percentage.

After receiving an M.A. Degree at Morehead University in 1960, Mr. Woods served as Principal of Powell County High School from 1967 to 1971 before assuming his present position at Flemingsburg. In 1974 he received a Rank I Education from Eastern Kentucky University. He has served as a teacher, coach and principal for twenty-five years.



## Football Assigning Secretaries

The names and addresses of the assigning secretaries, with the residence and business phone numbers (business numbers given first) are as follows:

- Joe Russell, Box 213, Russellville, 726-9531, 726-6983  
 Lawrence McGinnis, 2711 Windsor, Owensboro, 683-1016, 683-9948  
 Paul Walker, 625 Meadow Lane, Bowling Green, 843-3249, 843-8893  
 Jack Goodman, 514 Springdale, Brandenburg, 422-3363, 422-2072  
 Karl F. Schmitt, 710 E. Walnut, Louisville, 584-8269, 458-9065  
 Joe Seavers, 2517 Ann Street, Ludlow, 291-8925, 341-0213  
 Shirley Watts, 228 St. Ann Drive, Lexington, 255-0835, 266-1749  
 Cleophus Pursifull, 808 Dorchester Avenue, Middlesboro, 337-2102, 248-1332  
 R. B. Singleton, Box 53, Hindman, 642-3585, 785-3262  
 Edward Madden, Pippa Passes, 785-3153, 368-2753  
 Tommy D. Runyon, Box 181, Belfry, 353-7362, 353-7883  
 Frank V. Firestone, 224 Cardinal Road, Russell, 836-8822, 836-5120

## FILMS

The films listed below are in the Film Library of the University of Kentucky College of Education. The code letters "e, j, s, c, a" refer to elementary, junior high, senior high, college and adult audiences who may enjoy the particular film listed. The rental prices shown do not apply to schools which use one of the special subscription service plans offered by the Bureau of Audio-Visual Material.

### Football

**BALL HANDLING IN FOOTBALL**, j-s-c-a, 1 reel \$2.00.

Fundamentals of ball handling are stressed; stance, grip, "feel" of the ball, fingertip control adjustment before throwing or kicking, receiving passes from center or from a back, catching passes and punts, ways of carrying ball, and changing from one hand to another. Game shots are presented, using slow motion and stop action techniques, and superimposed animation to illustrate principles.

**BLOCKING IN FOOTBALL**, j-s-c, 1 reel, \$2.00.

Fundamentals of good blocking are taught in this film; position, speed, drive, follow-through, timing, and body control. Describes shoulder and body blocks, demonstrating several varieties of these. Importance of good physical condition, practice, and experience are emphasized. Special photography used to illustrate different points.

**FOOTBALL BY THE RULES**, e-j-s-c-a, 3 reels (30 min.), color, \$1.00.

The film will give to the viewer a better understanding and a keener appreciation of football. Modern photography presents many play situations that portray the guidelines used by officials in making judgment decisions so necessary in this sport.

(Continued on Page Four)

## In Memoriam



James David Montgomery

James David Montgomery (1935-1951), retired after serving as principal of Temple Hill High School for twenty-one years, director of Title I for seven years and pupil personnel director for five years, died last June 21 of a heart attack.

Montgomery was a native of Marshall County and was born in Calvert City. He began teaching in McLean County in 1923, and later taught and served as principal and coach at Summer Shade and Temple Hill.

He was a member of the Temple Hill Baptist Church and a participant in all church activities. Funeral services were held last June 24 with burial in the Summer Shade Cemetery.

He is survived by his widow, Luverne Montgomery; one daughter, Judith Nichols, Frankfort; one brother, Tilford Montgomery, Phoenix, Ariz.; two sisters, Mrs. Carroll Coursey, Calvert City, and Mrs. Juanita Bibbs, Owensboro.

## Federation Seal

(Continued from Inside Cover)

dicates that the S at the extreme right of the circle is significant. The national organization is not an association but in all respects is a federation of associations.

**The Four Stripes and Three White Bars** above the shield represent the administrative districts and the school executives who unselfishly devote their time and talents to promoting the interests of all of the schools of the nation.

**The Nineteen Rays** on the arch are the rays of a rising sun to suggest that the Federation is a source of energy which will continue to grow in influence for a long day ahead.

**The 50 Cogs** in the inner circle are for the 50 member State Associations.

**The Area** between the shield and the cog wheel is in the shape of a horseshoe as a reminder that, despite the best laid plans of mice and men, Destiny has a way of intruding.

The Horseshoe Calks point upward—inviting a rain of blessings.

H. V. Porter —  
 Former National Federation  
 Executive Secretary

## New Films

(Continued from Page One)

two fine high school teams from Jacksonville, Florida illustrating the many interesting and really vital teaching points included in this outstanding baseball movie. Some of the specific areas covered include: the umpire, the pitcher, the fielder, the batter, and the runner.

**SWIMMING AND DIVING TODAY**

Swimming and Diving Today is a 16 mm, 17 minute, sound and color motion picture using slow motion, stop action and instant replay techniques to clarify rule interpretations and officials procedures for interscholastic swimming. The film was produced under the direction of the National Federation of State High School Associations.

Swimming and Diving Today is the first movie based on the National Federation rule code. The specifics are listed below:

**BACKSTROKE** — Starting positions, Arm touch at turns, Position of hips at turns; **BREAST-STROKE** — Position of shoulders at the start of the stroke, Illegal flexing of knees, Submersion of the head; **BUTTERFLY** — Level of hands at turns and the finish, Overlapping of feet, Non-simultaneous arm recovery; **OFFICIAL MECHANICS; AMONG DIVES CONSIDERED** — Front dive, layout position, Back dive, layout position; Front 1½ somersault, pike position, Back 1½ somersault, tuck position; **LAP COUNTING**

## Films

(Continued from Page Three)

**KNOW YOUR FOOTBALL**, e-j-s-c-a, 3 reels (30 min.), color, \$1.00.

Gives a visual approach to the written rules. Play situations challenge the viewer's knowledge and clarify many rules interpretations. Recommended for fans, officials, coaches and players.

**TACKLING IN FOOTBALL**, j-s-c-a, 1 reel, \$2.00.

Tackling properly is shown as the result of application of certain fundamentals; good physical condition, speed, body placement, drive, sure grip, timing, and body control. Shoulder and cross body tackles are demonstrated in various ways, with special instruction for safety and means of reducing shock.

**FOOTBALL TODAY**, e-j-s-c-a, 1 reel, color, \$1.00.

Dramatic visual effects and exciting play action aid the viewer in gaining a better understanding of the rules and a deeper appreciation for football as it is played today.

## REGISTERED FOOTBALL OFFICIALS OF THE K.H.S.A.A. — 1974

(List Compiled August 23)

If one telephone number is given for an official listed it is the home phone unless otherwise designated. If two numbers are given the first number is that of the home phone.

Adams, Don L., 7302 Maria Avenue, Louisville 40222, 425-1652, 451-9300  
Adams, James C., R. R. 4, Box 372, Nicholasville 40356, 885-3471, 858-4415  
Akers, Randall, Box 2512, Pikeville 41501, 432-2879, 622-4708  
Aldridge, James R., 685 Pearman Avenue, Radcliff 40160, 351-9689, 351-3181  
Allen, Arthur, Rt. 6, Franklin 42134, 586-6836, 586-3231  
Allen, James E., 9402 Doewood Lane, Fern Creek 40291, 239-9080  
Allgood, David A., 6113 Cathleen Way, Louisville 40213, 969-2530, 456-4600

Allison, Roy, Box 877, Harlan 40831, 573-3789, 573-4770  
Anders, Raleigh A., 702 Catching, London 40741, 864-4060, 528-3912 (Corbin)  
Anderson, John G., P.O. Box 244, Prestonsburg 41653, 886-2278, 886-2346  
Arflin, Tracy T., 7540-B McDevett Circle, Ft. Knox 40121, 624-5366, 624-5828  
Armbrister, Marvin K., 113 Rainbow Lane, Clarksville, Tennessee 37040, 647-1423, 798-4429  
Armstrong, Alfred B., 10103 Clearcreek Way, Louisville 40223, 425-3014, 491-3540  
Arthur, Paul, 1323 13th Street, Huntington, West Virginia 25701, 523-8963, 453-1309  
Asher, Ralph, Box 232, Olive Hill 41164, 286-2081, 286-2081  
Austin, Tom, 230 Mohawk Drive, Paducah 42001, 554-4562, 554-4562  
Ayers, Edward L., 625 Laramie Road, Lexington 40503, 277-2333, 277-1161, Ext. 44  
Baird, James H., Box 503, Pineville 40977, 248-4160, 337-3093  
Baldwin, Dennis E., 4605 Myrick Place, Valley Station 40272, 935-0667, 448-8210  
Ball, Charles Philip, P.O. Box 991, Middlesboro 40965, 248-4806  
Barbour, Ralph Barry, 3481 Bathurst Ct., Lexington 40503, 278-0144, 278-0144  
Barker, David H., Bulan 41722, 436-5830, 436-6832  
Barker, Norman, Bulan 41722, 251-2878  
Bartlett, Charles W., 2303 Chateaugay Loop, Owensboro 42301, 684-5472, 683-2431  
Bates, James R., Box 584, Whitesburg 41858, 633-7227  
Batterton, Keith, Scenic Hill Est., Harrodsburg 40330, 734-9624, 734-7711, Ext. 306  
Bauman, Cease, Rt. 4, Box 226, Bardstown 40004, 348-6081, 348-9211  
Bell, Clarence T., 3812 Meadow Haven Road, Louisville 40218, 491-2846, 582-5573  
Bell, Ronald Keith, 197 Hedgewood Ct., Lexington 40509, 266-0587  
Bell, Russell G., 157 Sunset Drive, Frankfort 40601, 695-1353, 564-4836  
Bernardini, Bruno, 5018 B Hammond Heights, Ft. Campbell 42223, 798-6874, 798-4214  
Bero, James, Box 2426, Williamson, West Virginia 25661  
Bewley, Harry G., 306 Estate Drive, Elizabethtown 42701, 765-5018, 737-6466  
Bickel, Arthur F., 5614 Whispering Hills Blvd., Louisville 40219, 968-6770  
Blackford, Robert L., 414 Dayflower Ct., Edgewood 41017, 341-3849, 591-0002  
Blanton, Homer, 138 New Hampshire Drive, Ashland 41101, 324-8600, 324-1730  
Blemker, Ray, Jr., 2363 Dundee Drive, Henderson 42420, 826-8330, 423-6871  
Blevins, Donald W., 1958 Natchez Trail, Lexington 40504, 277-6824, 252-4009  
Bocook, Earl, 1102 Beech Street, Kenova, West Virginia 25530, 453-1810, 453-3661  
Boemker, Bob, 69 Thompson, Ft. Mitchell 41017, 331-1708, 721-2700, Ext. 350  
Bogar, Joseph D., Box 37, Hardy 41531, 353-4166, 353-7244  
Boswell, Martin, 107 Marlin Street, Providence 42450, 667-5143, 249-3132  
Boyles, Jerry, 2407 Hillcrest Road, Ashland 41101, 324-6995, 329-4178  
Bradford, Bob, 21 Toni Terrace, Ft. Thomas 41075, 781-1217, 753-5567  
Bramble, James L., 480 Doncaster Ct., Lexington 40505, 299-5750, 278-9355  
Brauch, Charles J., 117 Westview Drive, Bardstown 40004, 348-3218, 348-3991  
Brause, Dr. Allan R., 1577 Silverglade Ct., Cincinnati, Ohio 45240, 851-8484, 921-5300, Ext. 451  
Brewer, Jerry, Bonnyman 41719, 436-6200, 436-3155  
Brewer, Lloyd, Combs 41729, 436-6672, 436-3155  
Broadus, William, Rt. 1, Box 37E, Bardstown 40004, 348-9006, 549-3164  
Brock, Alben W., Box 103, Pineville 40977, 337-3848, 337-3512  
Brock, David P., 2115 Coburn, Ashland 41101, 325-4825, 324-6191  
Brotzge, Maurice, 3029 Beals Branch Dr., Louisville 40206, 893-7206, 896-4461  
Brown, Herman G., RFD #1, Box 108, Bagdad 40003, 747-8866, 633-2040  
Brown, J. W. (Scoop), 975 Waverly Drive, Lexington 40505, 252-0954, 255-0835  
Brummett, Don, 6110 Six Mile Lane, Louisville 40218, 452-6087, 448-1513  
Buckley, Robert S., Jr. 933 Washington, Flatwoods 41139, 836-8275, 329-4583  
Bullock, James, Rt. 4, Box 66, Madisonville 42431, 825-2645, 821-5761  
Bullock, Ted, 668 Wellington Way, Lexington 40503, 277-0145, 277-0145



- Burden, Ronald E., 1312 Jannelle Ct., Lexington 40502, 272-1271, 278-6824
- Burgess, Oley J., 1708 Sycamore Street, Kenova, West Virginia 25530, 453-2593
- Burke, David Dean, Tanglewood Estates, Flatwoods 41139, 836-1268, 324-1822
- Burkhart, James G., Box 133, Wallins Creek 40873, 664-2162, 664-3444
- Burris, Ralph, Rt. 3, Box 154, Nicholasville 40356, 858-3014
- Burrus, Lee Roy, Jr., Rt. 4, Box 304, Morganfield 42437, 389-3428, 389-2419, Ext. 251
- Burton, James, 308 S. Broadway, Providence 42450, 667-2296
- Burton, John, 2801 Holt Street, Ashland 41101, 325-4097, 329-3333
- Burton, John B., III, 2178 Carter Avenue, Ashland 41101, 324-3488, 324-5444
- Butler, Denver E., 1533 Southgate Avenue, Louisville 40215, 366-7195
- Byrd, A. Gordon, 6204 Scottwood Drive, Louisville 40258, 935-9995, 935-9995
- Caldwell, Robert E., 12165 Deerhorn Dr., Cincinnati, Ohio 45240, 851-2976, 243-3381
- Canaday, Jacy Glenn, 201 Lincoln Street, Vine Grove 40175, 877-5387, 877-5537
- Canady, Ray B., Box 244, Barbourville 40906, 546-4765, 546-3486
- Cargill, Thomas, Jr., 3515 Del Park Ter., Louisville 40211, 774-1447, 584-7156
- Carlson, David A., 2916 Washington St., Paducah 42001, 444-7943, 443-6411, Ext. 435
- Carr, Billy W., 612 Village Drive, Franklin 42134, 586-6910, 586-3261
- Carr, Larry, 323 Shelby Street, Bromley 41016, 261-2994, 243-3731
- Cato, Robert E., London 40741, 864-7792, 864-2252
- Caudill, Roy, 10,000 McNeely Lake Drive, Louisville 40229, 968-2930
- Cecil, J. Ronald, 3020 Dogwood Drive, Louisville 40220, 454-0204, 582-5521
- Cecil, Roger, Box 401, Hazard 41701, 436-6644, 436-2151
- Chasteen, Earl, 109 Taylor Drive, Cynthiana 41031, 234-4897
- Chattin, Ernest P., 615-17th Street, Ashland 41101, 324-2665, 325-8586, Ext. 231
- Cisco, Robert N., 403 Highland Avenue, Vine Grove 40175, 877-5903, 624-4045
- Clemmons, Sam, 226 Rugby Road, Lexington 40504, 255-7566, 255-1230
- Cline, Nick, 5505 Whispering Hills Blvd., Louisville 40219, 964-0214
- Clusky, Joe, Box 294, Matewan, West Virginia 25678
- Colley, Rev. Edward, 1959 Avonlea Avenue, Cincinnati, Ohio 45237, 731-7691, 241-0584
- Colley, Lynn W., 411 E. 23rd Street, Hopkinsville 42240, 885-9538, 886-4463
- Collins, Charles, 1474 Olive Street, Louisville 40210, 772-3817, 634-1551, Ext. 215
- Collins, Ron, 2590 Old Buttermilk, Villa Hills 41016, 341-0578, 431-9964
- Collins, Stephen F., 2027 Winston Avenue, Louisville 40205, 459-7810, 896-8841
- Conlin, Martin T., 319 Elm Street, Ludlow 41016, 491-7591
- Cook, Arthur, 210 Bluegrass Apt. 138F, Newport 41071, 781-0048
- Cook, Richard, 50 Forest Avenue, Ft. Thomas 41075, 441-9269, 243-3531
- Copley, Sid, Box 2, Matewan, West Virginia 25678
- Corbett, Byron, 104 Daffodil, Bardstown 40004, 348-2155, 348-3953
- Cornwell, Bobby, Rt. 2, Russellville Rd., Franklin 42134, 586-8250, 586-4451
- Cornwell, James, 506 South Main, Franklin 42134, 586-4327, 586-4451
- Cowan, Larry G., 101 Clark Street, Clay 42404, 664-2233
- Cowan, R. L., Sr., 3009 Pamela Way, Apt. 4, Louisville 40220, 451-1187, 587-5387
- Cox, Clarence, 497 Hill-N-Dale Rd., Lexington 40503, 277-5991, 252-5825
- Cox, Thomas O., 439 Huguelet Dr., Lexington 40506, 252-0725
- Craft, Albert B., 1606 Meadowthorpe Dr., Lexington 40505, 254-5365, 255-8600
- Cree, Richard W., Jr., 12507 Farm Brook Dr., Middletown 40243, 245-7287, 456-1160
- Creekmore, Les, 400 Sweetbriar Ct., Apt. 402, Newport 41071, 291-7880, 531-9987
- Crider, Ray, 1120 Franelm Road, Louisville 40214, 368-1196, 584-8189
- Crutcher, James Marion, 423 Skyline Tr. Ct., Bowling Green 42101, 781-3373, 843-1183
- Cubert, Jerry A., R. R. 1, Lawrenceburg 40342, 839-6730, 233-2000, Ext. 3304
- Culp, Willard E., 318 Skyling Pk. Dr., Hopkinsville 42240, 886-7967, 439-4476
- Cummings, Robert P., Jr., Rt. 2, Box 143, Franklin 42134, 586-8483, 586-8483
- Cundiff, Donald L., 216 Mimosa, Somerset 42501, 679-4629, 678-8944
- Cundiff, Richard K., Rt. 3, Box 237, Somerset 42501, 678-5601, 678-5279
- Current, Ellis Ray, 3006 Montavesta Drive, Lexington 40502, 266-2877, 272-3311
- Current, Robert, 3593 Pimlico Pkwy., Lexington 40502, 272-3552, 293-3952
- Dailey, Jerry R., 1261 Village Dr., Apt. 101, Lexington 40504, 252-2509, 269-4311
- Dallmann, James W., 12 Center St., Jeffersonville, Indiana 47130, 283-7255, 283-7255
- Daopoulos, Jim, 3474 Ipswich Ct., Lexington 40503, 277-8354, 258-2898
- Davidson, Harlan, Jr., P.O. Box 52, Hazard 41701, 436-6147, 436-3711
- Davis, Ralph C., 1326 S. 7th St., Ironton, Ohio 45638, 532-8606, 532-8143
- Davis, Thomas A., Apt. B-12 Wesley Apts., Shelbyville 40065, 633-6014, 633-3010
- Day, Richard, 1677 Linstead Dr., Lexington 40504, 255-0578, 255-3431
- Day, Roy E., 1325 Redburn Lane, Madisonville 42431, 821-2265
- Deaton, Julian A., Jr., P.O. Box 351, Wheelwright 41669, 452-4219, 358-2031
- Dempsey, Glenn T., 121 Bender Drive, Frankfort 40601, 223-2279, 233-2000, Ext. 7117 (Lexington)
- Dent, Don, 1722 Whittier Drive, Jeffersonville, Indiana 47130, 945-3497, 368-4551
- Denton, Wm. J., 6709 Seminole Avenue, Louisville 40214, 366-2137, 776-9365
- DeSensi, W. C. (Chick), 7714 Mango Dr., Louisville 40258, 937-0330, 772-3656
- Deweese, William L., 7007 Ashby Lane, Valley Station 40272, 935-8724
- Dickens, William D., 313 Beacon Hill, Nicholasville 40356, 885-6727, 278-9507
- Dorsey, James O., P.O. Box 504, Somerset 42501, 679-2738, 678-5929
- Douthwaite, Donald D., 5754 Biscayne Avenue, Cincinnati, Ohio 45211, 574-2238, 574-2238
- Drake, Richard R., 72 Donnelly Dr., Ft. Thomas 41075, 441-4235
- Duff, Earl, 109 Ky. Blvd., Hazard 41701, 436-2604, 436-2604
- Duff, Thomas, Box 11, Fruitland, Tennessee 38335, 784-3789, 352-2781
- Duff, William C., Jr., 2452 Mirahill Ct., Lexington 40509, 269-2426, 623-5098
- Durbin, Roy, 2911 Dale Ann Drive, Louisville 40220, 452-1730, 587-5237
- Durden, John R., Rt. 1, Cervlean 42215, 885-8847, 886-4463
- Dyehouse, James F., Jr., 235 Dantzler Ct., Lexington 40503, 278-1620, 254-6491
- Dyer, Royce, Rt. 1, Hickman 42050, 236-2288
- Easley, Dan W., 105 Belivue, Wilmore 40390, 858-4072, 858-3511
- Edwards, Don O., 1721 Curling Way, Bowling Green 42101, 781-6695, 781-4330, Ext. 128
- Egnew, Ronald, 133 Valley Brook Drive, Frankfort 40601, 875-3700, 564-4870
- Elder, Gary W., 1905 Maricopa Ct., Louisville 40223, 426-6522, 452-3009
- Ellis, Bill, 3641 Bradley Road, Huntington, West Virginia 25704, 429-2117, 525-5193
- Elovitz, Carl, 1920 Spring Grove Avenue, Lexington 40504, 277-3994, 873-4901
- Emmons, Guy W., 6006 Shadow Run Road, Louisville 40219, 964-7784
- English, P. T., Rt. 3, Union City, Tennessee 38261, 885-5950, 885-5950
- Eubanks, William M., 302 Finn Street, Franklin 42134, 586-8696, 586-3231, Ext. 70
- Evans, Gary Stephen, 117 Kittison Dr., Winchester 40391, 744-9738, 293-3318 (Lexington)
- Evans, Lewis, Rt. 2, Morgantown 42261, 526-4310, 526-3730
- Evans, Thomas D., 117 Honeysuckle, Bardstown 40004, 348-5290
- Evans, Willis S., Jr., 3600 Montclair Avenue, Louisville 40218, 491-2317, 582-5410
- Ewen, George Donald, 2082 Rambler Road, Lexington 40503, 278-6235, 564-3498
- Ewing, Roger G., Rt. 1, Cox's Creek 40013, 348-3253, 348-9211
- Faris, Leon W., III, 212 Barberry Lane, Lexington 40503, 278-4103, 255-2120
- Farmer, Donnie R., 5517 Brinson Dr., Louisville 40216, 447-8228, 776-9367
- Faust, Jack, 2427 Concord Dr., Louisville 40217, 634-4204, 634-4796
- Fay, John C., 329 Wilson Downing Road, Lexington 40503, 272-6182
- Feck, Richard A., Rt. 1, Box 50D, Wilmore 40390, 858-4174, 252-2312, Ext. 2535



- Fenimore, Clarke E., 4083 Gilman Avenue, Louisville 40207, 896-4716, 245-0727
- Ferguson, Roy, Rt. 3, Barbourville 40906, 546-4521, 546-4521
- Ferrell, Ronnie, Box 37, Belfry 41514, 237-1344, 235-2323, Ext. 40
- Fields, Harold D., 804 Summerville Drive, Lexington 40504, 233-1669, 233-2000, Ext. 3685
- Fields, Rickey P., 29½ N. Maysville, Mt. Sterling 40353, 498-2000, 498-1215
- Fish, Leland G., 537 Folkstone Dr., Lexington 40502, 266-5087, 252-2312, Ext. 2535
- Flynn, Bobby, 428 McKenna Ct., Lexington 40505, 299-5902, 255-2481
- Fortney, Robert L., 2817 Breckinridge Lane, Louisville 40220, 458-1079, 582-3511, Ext. 472
- Foster, Berryman E., 927 Waverly Dr., Lexington 40505, 255-7374, 252-2312, Ext. 2528
- Foster, J. W., R. R. 1, Old Frankfort Pike, Versailles 40383, 846-4121, 277-8703
- Foust, David D., 101 Volunteer Drive, Somerset 42501, 678-4764, 678-5101
- Fraleigh, Bill, 1604 Lee Drive, Henderson 42420, 872-4993
- Frankel, Louis S., 3723 Stanton Blvd., Louisville 40220, 452-6519, 452-6519
- Franklin, Cliff, 10152 ZigZag Road, Cincinnati, Ohio 45242, 891-3567, 251-4828
- Frazier, Tom Roe, Rt. 1, Sturgis 42459, 333-4412, 333-4672
- Freed, Howard D., 1369 Teakwood Avenue, Cincinnati, Ohio 45224
- Freeman, Eugene A., 11707 Brackenberry Ct., Louisville 40272, 937-9726
- Friedman, Charles M., 4502 Fegenbush Lane, Louisville 40218, 454-3861, 361-2333
- Fryer, William M., 187 Melwood Place, Henderson 42420, 826-5976, 826-7171
- Fryrear, Bill P., 204 Lanark Dell, Middletown 40243, 245-0354, 452-3161
- Fuller, Wilton H., 533 Hill-N-Dale, Lexington 40503, 277-6654, 272-1513
- Furlong, William E., 3320 Grandview Avenue, Louisville 40207, 895-4755, 582-5108
- Futrell, Keith M., R. R. 1, Rockfield 42274, 781-1409, 842-0316
- Gallaher, Jack F., 2947 Adams Ave., Ashland 41101, 325-2420, 324-2142
- Gammon, William H., 1718 Oaks Dr., Ashland 41101, 324-1665, 329-3633
- Garrett, Richard A., 1040 Cross Keys, Apt. 9, Lexington 40503
- Gastineau, Joby A., III, 121 Todds Rd., Apt. 150, Lexington 40508, 266-6123, 272-3115
- Gelbke, Gilbert M., 840 Alexandria Pike, Ft. Thomas 41075, 781-2273, 491-9774
- Gentry, Dale J., 4945 Determine Lane, Louisville 40216, 447-5981, 585-5814
- Gettler, John F., 705 Providence Road, Lexington 40502, 266-4801, 255-0835
- Gfell, George V., 3319 Coldstream, Lexington 40502, 272-1349, 272-1349
- Gibson, Richard L., 105 4th Street, Cynthiana 41031, 234-4251, 234-4632
- Gilbert, Larry, 418 Iroquois Dr., Bowling Green 42101, 781-2944, 745-3347
- Gilbert, Steve, 418 Iroquois Dr., Bowling Green 42101, 781-2944, 843-3807
- Gilkerson, Pat, Rt. 1, Box 117A, Prichard, West Virginia 25555, 486-5291, 525-7611
- Gober, John S., 204 Morningside, Clarksville, Tennessee 37040, 648-2731, 798-4105
- Goble, Gary L., 1261 Village Dr. #95, Lexington 40504, 254-8611, 254-0542
- Gonterman, Ronald, 841 Melford Avenue, Louisville 40217, 634-1924, 426-1050
- Gore, Bailey, 1603 Sunset Dr., Murray 42071, 753-8509, 762-6286
- Gour, Bob, 1316 S. Lee Street, Bowling Green 42101, 843-9582, 842-8175
- Graas, Oscar L., 2509 Foxy Poise Rd., Louisville 40220, 451-4127, 968-5321
- Graham, Jim, 2517 Jackson Street, Ashland 41101, 324-8169, 325-8511, Ext. 733
- Green, Don, 832 Brand Street, Mayfield 42066, 247-6038, 247-6445
- Greenwell, Robert A., 4114 Wimpole Rd., Louisville 40218, 459-8646, 583-3875
- Grefer, Thomas J., 65 Geiger Avenue, Bellevue 41073, 491-3219, 261-8655
- Griffey, Richard K., Box 1425, Williamson, West Virginia 25661, 235-5228, 235-5280
- Griffin, Powell Lynn, 209 Clydesdale Tr., Louisville 40223, 245-8188, 426-3900
- Gross, Joseph, Box 697, Hazard 41701, 436-2661
- Gupton, George E., 1050 Legion Pk. Rd., Greensburg 42743, 932-4253, 932-4200
- Gupton, Lawrence, Greensburg 42743, 932-7830, 384-3338
- Guy, N. S., III, Browning Acres, Harlan 40831, 573-4684, 573-4707
- Hackett, Wilbur L., Sr., 1472 Olive St., Louisville 40210, 772-0493, 452-4109
- Hadden, N. Perry, III, 856 Della Drive, Lexington 40504, 278-8561, 278-6026
- Hadden, Newell, 942 Wolf Run Road, Lexington 40504, 255-5332, 254-6491
- Hall, Charles E., 601 Pontiac Trail, Danville 40422, 236-8811, 236-2604
- Hall, Samuel E., 1931 East 21st St., Owensboro 42301, 684-4153, 684-8811
- Hambly, Thomas Edwin, 201 Gateway Lane, Hopkinsville, 42240, 885-9980, 885-9491
- Hancock, Edwin D., R. R. 3, Box 205, Henderson 42420, 521-0728, 521-7003
- Hagy, Daniel B., Box 361, Loyall 40854, 573-4789, 573-1900
- Harris, David L., 207 N. 3rd St., Bardstow 40004, 348-5733, 348-3311
- Harris, James D., 207 N. 3rd Street, Bardstow, 348-5733, 348-3311
- Hawkins, Donald H., Rt. 1, Ekron 40117, 828-3631, 828-2125
- Hawkins, Ed, 5999 Waldway Lane, Cincinnati Ohio 45224, 542-3888, 542-9000
- Hawkins, Will A. (Billy), 407 Grace Street, Springfield, Tennessee 37172, 384-5310, 384-5583
- Hayden, John O., 1624 Stafford Avenue, Louisville 40216, 367-8662, 368-3351
- Heaberlin, Bill, 928 Washington Ave., Flatwoods 41139, 836-6915, 325-8511, Ext. 253
- Head, Lon E., 105 N. Main Street, Harlan 40831, 573-6948, 573-1900
- Hedge, Dave, 107 Maple Hurst Dr., Jeffersonville, Indiana 47130, 283-3962, 283-6943
- Helton, Leslie, 6510 Maravian Dr., Louisville 40258, 448-8201, 582-2658
- Henderson, Charles A., 8067 Estesbrook Dr., Nashville, Tennessee 37221, 356-7703, 255-7681
- Hendon, L. J., 228 S. 15th St., Murray 42071, 753-3658, 753-2825
- Herrick, Calvin P., 200 S. Arnold Avenue, Prestonsburg 41653, 886-3494, 886-2311
- Hicks, Jack, 10 Lockwood, Ft. Thomas 41075, 441-2405, 261-6666
- Hillard, William, 2030-A Werner Pk., Ft. Campbell 42223, 798-6331, 798-6792
- Hines, Richard G., Rt. 1, Box 228, Bardstow 40004, 348-9488, 348-9231
- Hoffman, Thomas A., 2235 Hanser Dr., Apt. 4, Covington 41011, 581-2399, 272-3480
- Hopson, James E., Rt. 1, Box 918M, Pikeville 41501, 437-7772, 432-1461
- Horsman, Bill, 2902 5th, Louisville 40208, 637-1201, 964-3301
- Houchens, Tom M., 505 N. Long Street, London 40741, 864-9075, 864-2136
- Howard, Robert E., Rt. 2, Box 85M, Middlesboro 40965, 337-2263, 348-3968
- Howell, Damon E., Jr., Box 37, Bardstow 40004, 348-6601, 348-6240
- Hubbard, John D., 215 W. Beall, Bardstow 40004, 348-3067, 348-6457
- Huffine, Gary L., Rt. 8, Paducah 42001, 442-4125, 442-4125
- Humble, Michael E., 1606 Mowhawk Trail, Hopkinsville 42240, 886-9334, 886-5424
- Humphreys, Bill, Rt. Box 12, Maysfield 42066, 247-8576
- Hunt, Leonard, 1303 Gainesway Dr., Lexington 40502, 272-6095, 252-7233
- Hunter, James, 4219 Naneen Dr., Louisville 40216, 367-1361
- Hutcheson, John D., P.O. Box 455, Morgantown 42261, 526-3677, 526-3715
- Ishmael, Stephen A., 407 Tucker Station Rd., Louisville 40243, 245-9571, 245-9571
- Jackson, William C., Rt. 4, Box 342, Morganfield 42437, 389-3405, 389-2419, Ext. 219
- Jacoby, Ben W., Rt. 1, Georgetown 40324, 863-0508, 255-6812, Ext. 2267
- James, Gene, 1507 S. 3rd Street, Ironton, Ohio 45638, 532-6976
- Janes, Charles W., 112 E. Daugherty, Bardstow 40004, 348-5780, 348-3931
- Jeffries, David T., 9502 Candywood Lane, Louisville 40291, 239-4498
- Jensen, Edward A., III, 3407 Trellis Ct., Jeffersontown 40299, 267-7010
- Johanson, Ralph G., 2423 LaRochelle Rd., Lexington 40504, 253-1266, 269-4311
- Johnson, Arthur E., Lee Dean Est., Lot 34, Rt. 5, Nicholasville 40356, 272-5858, 258-5882
- Johnson, Bob, 3310 Springhaven, Catlettsburg 41129, 739-4628, 325-8511, Ext. 557
- Johnson, Gordon M., P.O. Box 682, Prestonsburg 41653, 886-6163, 886-8362
- Johnson, Harry A., Jr., 4329 Harts Ct., Paducah 42001, 443-1767, 444-6311
- Johnson, Jon K., 197 Elm Street, Pikeville 41501, 437-9708, 432-1414, Ext. 32

- Johnson, Ned B., 117 S. 2nd, Bardstown 40004, 349-3534, 742-4649
- Johnson, Stan W., 3500 Ashlawn Dr., Owensboro 42301, 684-2157, 295-3451
- Jones, Denver (Smokey), 174 East Main, Apt. 2, Hazard 41701, 439-1812, 436-6568
- Jones, James M., 1216 Tallow Ln., Louisville 40214, 361-3273, 361-9431
- Jones, Paul D., 4012 Massie Avenue, Louisville 40207, 895-5074, 636-4531
- Jordan, Charles M., Franklin Apts. #2 Apt. 3L, Louisa 41230, 638-4893, 789-4271
- Kammerdiener, Roldal, 2258 Bradford Dr., Louisville 40218, 451-1301, 582-4787
- Kammerer, Kenneth, R. R. 1, Box 266B, Melbourne 41059, 635-5406, 721-1111, Ext. 223
- Kaufman, Alvin R., 8215 St. Anthony Ch. Rd., Louisville 40214, 366-0126, 584-8315
- Keifer, Robert B., Jr., 2916 Hackworth St., Ashland 41101, 324-2872, 329-4631
- Keller, Terry Joe, 237 Ludford St., Ludlow 41016, 261-9987
- Kemen, Jerry, 440 Pickett Drive, Ft. Wright 41011, 331-4272, 331-4272
- Kennedy, Jim, R. R. 1, 212 Paddock Pl., Versailles 40383, 873-7490, 873-5948
- Kidd, Gary G., 414 S. 17th Street, Mayfield 42066, 247-7150, 247-5122
- Kiesling, LeeRoy W., Rt. 1, Martin, Tennessee 38237, 587-6748, 587-7939
- Kinch, Marvin N., 104 Woodland Dr., Somerset 42501, 679-3690, 679-5330
- Kinnard, Robert F., 2349 Shandon Dr., Lexington 40505, 293-0804, 233-2000, Ext. 7569
- Kirk, Charles, U.S. 119, Whitesburg Rd., Cumberland 40823, 589-2086, 633-4423
- Kirk, Jerry Richard, Box 334, Benham 40807, 848-2039, 633-4422
- Kirkland, Drew, P.O. Box 684, Owensboro 42301, 926-2488, 684-1404
- Kirkin, Luther, Box 367, Harlan 40831, 573-2535, 573-2210
- Klusman, Carl J., Jr., 3108 Gambriel Ct., Louisville 40205, 459-0581, 634-1531, Ext. 446
- Kouns, Robert H., Box 582, South Shore 41175, 932-4540, 932-3323
- Krentz, Gerald K., 213 Walnut, Southgate 41071, 441-4386, 542-7410
- Kuster, Thomas T., 6509 Bluegill Blvd., Louisville 40229, 964-1700, 584-8191
- LaFountain, James L., Rt. 4, Box 312, Nicholasville 40356, 885-3234, 293-3822
- Lambert, Irvin G., 6412 Fern Crest Rd., Louisville 40291, 239-4996
- Lasch, James H., 4018 Retreat Rd., Louisville 40219, 964-2785, 589-7456
- Laudeman, Bob, 206 Don Allen Road, Louisville 40207, 895-3944, 425-2571
- Law, William, R. R. 1, Box 640 - 36, New Richmond, Ohio 45157, 553-4822, 441-0068
- Leahy, Pat, 2907 Cromarty Way, Louisville 40218, 459-2066, 587-5215
- Lawson, Leland, 949 Deporres Ave., Lexington 40505, 254-1009, 254-8074
- Ledford, Thomas B., 2702 Wren Rd., Ft. Campbell 42223, 431-4482, 798-2415
- Lee, Douglas, Woodland Hills, Harlan 40831, 573-2676, 573-3440
- Lee, Robert, Box 5, Box 609, Coldiron 40819, 664-2436, 664-3481
- Lee, William A., Box 116, Wallins Creek 40873, 664-2127, 573-5027
- Leneave, Robert E., 205 E. 18th Street, Benton 42025, 527-3661, 527-2561
- LeQuire, H. M., Woodland Hills, Harlan 40831, 573-1857, 573-5151
- Lewis, Robert L., 229 Mandalay Rd., Lexington 40504, 255-0088, 252-2321
- Liberator, Same, 118 Hurstland Dr., Bardstown 40004, 348-6245, 348-3301
- Lillie, Wes, 9502 Meadowgate Ct., Louisville 40223, 426-1188, 582-2658
- Lindon, Bob, Rt. 1, Higbee Mill Rd., Lexington 40503, 278-2439, 564-7360
- Lingo, Henry E., 424 West Main St., Vine Grove 40175, 877-2346, 877-5537
- Linkes, Clifford, P.O. Box 207, Science Hill 42553, 266-6087, 564-3020
- Lloyd, David, 615 Elm Street, Ludlow 41016, 581-1119, 441-7100
- Logan, Michael, Schultz Rd., South Shore 41175, 932-3310, 354-7551
- Long, James E., Box 73, Baskett 42420, 827-5000, 827-1867
- Loperfido, Richard O., 209 West Main St., Greenup 41144, 473-6591, 473-6591
- Lowe, James D., 1607 Valley Wood Way, Bowling Green 42101, 842-1725, 843-9073
- Lowe, Stan, Box 337, Russellville 42276, 726-6647, 726-6647
- Luckett, Thomas Edward, 3831 Lewis Lane, Owensboro 42301, 926-1688, 684-7273
- Lusby, George, 615 Pueblo Trail, Georgetown 40324, 863-1440, 863-3805
- Lykins, James O., 171 Peachtree Rd., Versailles 40383, 873-8524, 873-3276
- McClure, Tom, 204 Madison, Bardstown 40004, 348-9662, 348-3931
- McCormick, Don H., 36 S. Alvasia Street, Henderson 42420, 826-6314, 826-8451
- McCourt, Lowell A., 108 Quachita Trail, Frankfort 40601, 695-2061, 564-4390
- McCray, Carl G., Rt. 1, Box 82A, Berea 40403, 986-9471, 233-2000, Ext. 2308
- McDonald, Thomas, 316 Rittig Road, Henderson 42420, 826-8187, 826-2871
- McFadden, Jimmie, 649 Northside Drive, Lexington 40505, 299-1635, 299-1635
- McGehee, Gordon, 733 Forest Lane, Covington 41015, 261-6880, 441-9987
- McGinty, L. V., Sr., 3938 Sunset Avenue, Paducah 42001, 442-8080, 442-8050
- McKenzie, Claude L., Auxier 41602, 886-2097
- McKinney, Adelle F., 2770 Lavoisier Court, Radcliff 40160, 351-5299, 351-6818
- McPeck, Talmadge, 1710 Bethann Drive, Flatwoods 41139, 836-4540, 325-7777
- Malone, James F., 200 Padgett Street, Corbin 40701, 528-2424, 528-9019
- Maloney, Ross H. (Pat), 703 Waterford Road, Louisville 40207, 897-2385, 893-2348
- Mang, Berry W., Jr., 1624 Woodburn Avenue, Covington 41014, 261-9932, 632-8645
- Major, Lucian, Route 4, Martin, Tennessee 38237, 582-6615, 885-2310, Ext. 206
- Martin, Alan L., 2511 Lamborne Blvd., Louisville 40272, 935-0031
- Martin, Paul J., 2500 Middleground Drive, Owensboro 42301, 684-6662, 685-5536
- Mason, Leslie M., 2020 Dogwood Drive, Lexington 40504, 276-1943, 233-2000, Ext. 3704
- Mason, W. C., 2018 North Limestone, Lexington 40505, 293-9344, 233-2000
- Mattingly, Charles (Pete), 3813 Poplar Level, Louisville 40213, 459-5793, 482-3311, Ext. 23
- Mattingly, Wayne, Rt. 5, Box 345, Russellville 42276, 726-7466, 726-2051
- Mattmiller, Richard, Jr., 1718 Blue Licks Road, Lexington 40504, 278-2012
- May, Larry, P.O. Box 340, Williamson, W. Va. 25661, 235-6559
- Mayer, Ed, 5005 Sunday Drive, Louisville 40219, 968-2632, 587-8865
- Maynard, James L., Box 37, Belfry 41514, 237-1198, 237-1010, Ext. 345
- Meadors, William J., 784 Covington Avenue, Bowling Green 42101, 842-4141, 745-3348
- Meadows, Harold S., 1712 Hilltop Drive, Carrollton 41008, 732-5788, 732-6661
- Mercker, George E., 2907 Iris Way, Louisville 40220, 451-8399, 584-2371
- Metzger, Don, 9312 Cloverwood Lane, Louisville 40291, 239-9813, 452-4625
- Meyer, Ray, 3142 Rosina Avenue, Covington 41015, 261-3272
- Mick, Paul E., Box 191, Marion 42064, 965-2521, 965-3191
- Mickey, Elbert, Box 2471, Williamson, W. Va. 25661, 235-3483, 235-2122
- Midden, Terry, 3107 Cabinwood Drive, Louisville 40220, 451-6778, 491-4310
- Miffilin, Charlie, 550 Iroquois Trail, Georgetown 40324, 863-4291, 254-8061
- Miles, Ralph A., 5567A Hiers Street, Ft. Knox 40121, 624-1678, 624-4849
- Miller, Wm. David, Box 21, Burchett Trailer Park, Auxier 41602, 886-8785, 886-8785
- Milum, Kenneth J., 750 W. Noel Avenue, Madisonville 42431, 821-1323, 821-0016
- Minta, John H., 1010 Irving Drive, Clarksville, Indiana 47130, 283-4778, 589-4400, Ext. 313
- Montgomery, Wm. David, 4203 Kirby Lane, Louisville 40299, 267-5055, 267-0179
- Moody, William R., 2032 Oleander Drive, Lexington 40504, 277-9622, 255-5612
- Mooneyhan, James H., 810 Henry Street, P.O. Box 220, Franklin 42134, 586-4989, 586-6000
- Moore, Franklin (Bud), 5351 Whitmore Drive, Cincinnati, Ohio 45238, 922-8317, 621-8771
- Moore, Phillip H., RFD 6, Bowling Green 42101, 781-3067, 842-5302
- Moore, Robert, 441 Forest Avenue, Erlanger 41018, 342-6942, 563-1100
- Moore, Wm. Kelly, North Lake Drive, Prestonsburg 41653, 886-3623, 886-3083
- Mordica, William A., 800 Edgewood Avenue, Ashland 41101, 324-7741, 324-7741



- Morgan, Richard, Rt. 7, Box 78, London 40741, 864-6511, 864-5114
- Morse, Richard K., 163 No. Deepwood Drive, Radcliff 40160, 351-3748, 624-4646
- Morton, Jim, 1110 Cheyenne Drive, Bowling Green 42101, 843-9603, 842-7302
- Motley, Jerry N., 907 Magnolia Avenue, Bowling Green 42101, 781-1155, 726-6428 (Russellville)
- Mullannix, W. Wayne, 3521 Rocky Hill Terrace, Lexington 40503, 272-5153, 233-2000, Ext. 2191
- Mullins, Charles E., Schultz Road, South Shore 41175, 932-4277, 473-9812
- Murdach, Leslie, 965 Homestead Trail, Henderson 42420, 827-4133
- Murray, Thomas, 25 Ashton Road, Ft. Mitchell 41017, 331-1891, 369-4742
- Nelson, Clarence R., 2911 Asbury Place, Owensboro 42301, 683-0816, 295-3451, Ext. 343
- Nelligan, Michael L., 3112 Wayside Drive, Louisville 40216, 776-6511
- Nethercutt, Bill, 82 Sycamore Street, Huntington, W. Va. 25705, 523-2112, 429-1381
- Newton, Joseph A., 117 Hurstbourne, Bardstown 40004, 348-5748
- Nickell, Duane (Red), 237 Maxfield Drive, Paducah 42001, 444-6095, 543-7434 (Metropolis, Ill.)
- Noland, Douglas, 305 Herndon Avenue, Stanford 40484, 365-2609, 365-2619
- Nord, Bertrand J., 3006 Falmouth Drive, Louisville 40205, 459-6596, 367-1711
- Norton, Timothy J., 3117 Poplar Level Road, Apt. 11, Louisville 40213, 637-5882, 634-1551
- Norwood, Thomas, 811 Henry, Franklin 42134, 586-3614, 586-3541
- Oldham, Ben R., 3418 Gingertree Court, Lexington 40502, 266-4907, 278-6076, Ext. 213
- Omar, Max G., 1139 Gilbert Lane, Owensboro 42301, 685-2712, 926-1110
- Omer, Harold G., 150 N. Crestmoor, Louisville 40206, 896-4170, 968-6207
- O'Nan, Dennis, 420 Hilltop Avenue, Lexington 40506, 257-3341, 257-3371
- O'Nan, Norman, Rt. 1, Box 305A, Henderson 42420, 827-3968, 826-9578
- Osborne, Lonnie K., Box 72, Robinson Creek 41560, 432-1414 (Bus.)
- Osborne, Ted G., Box 806, Lexington 40501, 266-6152, 266-6152
- Osting, James E., II, 7518 Yorktown Road, Louisville 40214, 368-9631, 581-5550
- Pace, Donald W., Rt. 4, Cleveland Road, Lexington 40505, 293-0181, 255-0398
- Padgett, R. K., 112 Richardson Drive, Somerset 42501, 678-5485, 679-1544
- Page, James N., P.O. Box 434, Corbin 40701, 528-8263
- Palas, Steve C., 9723 Old 3rd Street Road, Louisville 40272, 935-5964, 448-1272
- Palko, Edward, RR 1, Owenton Road, Frankfort 40601, 223-8833, 873-4541
- Pardue, Israel L., 1005 So. 28th Street, Louisville 40211, 776-6635, 774-6431
- Parker, Bob L., 8602 Honor Avenue, Louisville 40219, 969-9090, 587-8276
- Parker, Dale, Chinn's Branch Road, Wurtland 41144, 836-4802
- Parker, Larry A., Box N, Russell 41169, 836-8713
- Parsley, Clyde E., Route 2, Providence 42450, 667-2524
- Passafiume, John, 7716 St. Bernard Court, Louisville 40291, 239-4373, 454-0466
- Pate, Lloyd W., 608 Ronnie Road, Madison, Tennessee 37115, 868-3751, 868-2910
- Patterson, John L., 2324 Sumter Lane, Apt. D., Indianapolis, Indiana 46224, 247-0367, 266-4302
- Patterson, William C., 419 Henry Street, Greensburg 42743, 932-4738, 932-4263
- Paxton, Gary R., 2485 Versailles Road, Lexington 40504, 252-0570, 252-0570
- Payne, Charles A., 1819 So. 8th Street, Ironton, Ohio 45638, 532-4804, 329-4315
- Payne, Gregory H., 2210 Landan Drive, Louisville 40218, 456-6061, 582-4111
- Peeno, Harry R., 124 Morris Road, Lookout Heights 41011, 331-1981
- Perrin, James A., 700 E. 7th, Apt. 4, Hopkinsville 42240, 886-0474, 886-4463
- Peterson, Bill S., P. O. Box 213, Bardstown 40004, 348-9696, 348-9224
- Pietrowski, Paul, 108 Bishop Street, Corbin 40701, 528-6391, 528-1630
- Pinson, Eugene, Rt. 4, Box 254, Ashland 41101, 928-6228, 324-3101
- Pirkle, Paul S., 2212 Twenty Grand, Owensboro 42301, 684-2751, 295-3451
- Pittman, Spencer, 602 College Street, Winchester 40391, 744-8508
- Powers, Clark, 657 Carolyn Avenue, Danville 40422, 236-8467, 236-2330
- Powers, Elmer, 1017 N. Main, Barbourville 40906, 546-6613, 864-2271
- Puckett, James, Rt. 5, Mayfield 42066, 247-6394, 247-6394
- Pugh, Robert B., 562 Halifax Drive, Lexington 40503, 278-0059, 276-1691
- Pugh, Roy D., 3510 Barclay Drive, Jeffersontown 40299, 267-5513, 361-1211
- Purwin, John C., Box 381, College Ht. P. O. WKU, Bowling Green 42101, 842-8540
- Quehl, Bud, P.O. Box 309, Princeton 42445, 365-2238, 365-2620
- Raderer, Norman D., 2718 Sheila Drive, Louisville 40220, 458-3767, 968-6241
- Rains, Everett Paul, Rt. 1, Box 432, Williamsburg 40769, 549-0240, 549-2781
- Rains, Richard, 943 Spring Street, Covington 41074, 291-7630
- Ramey, Roy, P.O. Box 669, Prestonsburg 41653, 886-2208, 886-6861
- Randall, LeRoy, Rt. 2, US 27, Alexandria 41001, 694-6642, 635-2191
- Rapp, William C., 1836 Woodland Drive, Ironton, Ohio 45638, 532-1983, 532-7245
- Rascoe, Robert B., 523 Sumpter, Bowling Green 42101, 842-2360, 745-3542
- Rawdon, Richard M., Jr., P.O. Box 631, Georgetown 40324, 535-6198, 863-0249
- Read, Frederick K. (Rick), 1338 Greenup Street, Covington 41011, 431-5197, 431-5197
- Reeves, Curtis R., 568 Severn Way, Lexington 40503, 277-1725, 254-8061, Ext. 212
- Renfro, James H., 4035 Court Avenue, Paducah 42001, 443-6611, 444-6311
- Reynolds, Elmer, Box 421, Loyall 40854, 573-1828, 573-1900
- Riggs, C. Dennis, 3131 Sudbury Lane, Louisville 40220, 451-1278, 452-8341
- Ring, Bill, 481 Rookwood Parkway, Lexington 40505, 299-7089, 255-8492
- Roark, Jimmy W., P.O. Box 114, Pathfork 40863, 664-2008, 664-3444
- Roberts, James E., 1019 Pawnee Drive, Elizabethtown 42701, 765-4739, 769-5950
- Roberts, Thomas L., Jr., Box 58335, Louisville 40258, 935-2874, 582-2547
- Robinson, Jack, 109 Walker Branch Road, Hazard 41701, 436-4571, 436-5196
- Robinson, James S., 614 Meadowlawn Drive, Bowling Green 42101, 781-2622, 745-3347
- Roby, James B., 119 Maple Grove Court, Bardstown 40004, 348-6264
- Rodgers, Tom H., 642 Broadway, Apt. 3, Madisonville 42431, 821-9447, 821-8157
- Rogers, Rufus B., Ft. Knox 40121
- Rose, Robert L., 10002 Mary Dell Lane, Louisville 40291, 239-0059, 778-4421
- Rosen, William H., P.O. Box 37, Belfry 41514, 237-1092, 235-1995
- Rouse, Donald J., Jr., Box 37, Belfry 41514
- Rudolph, Fred, Jr., 5600 Jeanine Drive, Louisville 40219, 635-7441
- Russell, Gary E., 2112 Gregory Drive, Henderson 42420, 827-2437
- Russman, Godfrey F., Jr., 1041 Goss Avenue, Louisville 40217, 456-6886, 635-7426
- Ryan, David B., P.O. Box 788, Elizabethtown 42701, 765-7067, 323-8751
- Sammons, C. J., Box 57, Red Jacket, W. Va. 25678
- Sanders, Mel, 4300 Kimberly Court, Paducah 42001, 442-3650, 564-2582
- Sandfoss, Michael J., 64 W. Villa Place, Ft. Thomas 41075, 441-5069, 562-2930
- Sanks, David, 8602 Chipstone Court, Louisville 40299, 267-0175, 585-8243
- Saylor, Gary L., General Delivery, Tremont 40871, 573-2584, 573-1900
- Saylors, Carlee, Rt. 8, Box 470, Murray 42071, 753-7979, 924-5602
- Schultz, Frank D., 206 W. Beall, Bardstown 40004, 348-5137, 964-5911
- Schmitt, Paul E., 3864 Darlene Drive, Louisville 40216, 778-5355, 772-3656
- Scott, W. L. (Bill), 1816 McDonald Road, Lexington 40503, 278-2844, 278-9702
- Scurry, Henry L., Box 31, Ky. St. Univ., Estill Apt. 4, Frankfort 40601, 875-1288, 564-6066
- Sesher, James T., 7091 Manderlay Drive, Florence 41042, 371-8128
- Shanks, Thomas E., 3113 Vogue Avenue, Louisville 40220, 454-4203, 582-5514
- Sharp, Jerry, 2426 W. Cumberland Avenue, Middlesboro 40965, 248-4315, 248-3916
- Sharp, Mike, 140 Chasteen, Middlesboro 40965, 248-3916, 248-2930

- Sharp, Ronnie, 140 Chasteen, Middlesboro 40965, 248-3916, 864-2207
- Shaughnessy, Bernard, 2129 East Lane, Louisville 40216, 448-4923, 583-4851, Ext. 21
- Sherman, Inman J., Jr., Rt. 5, Box 688, London 40741, 864-6518, 864-2207
- Shelton, James S., 214 E. 20th Street, Benton 42025, 527-9802, 247-1431
- Shontee, Raymond T., 2204 Wingfield Court, Louisville 40216, 772-1744, 776-9365
- Shreve, Tim, 118 Alpha Avenue, Louisville 40218, 458-5183, 452-3177
- Simms, Clarence E., 610 Linden Avenue, Newport 41071, 581-3026, 243-3104
- Simms, Randy, 1905 Richmond Drive, Louisville 40205, 456-9537 (Bus.)
- Simpson, James H., Box 424, South Shore 41175, 932-3613
- Simpson, Olando J., Appalachian Reg. Hospital, Hazard 41701, 436-2924, 439-1331, Ext. 308
- Sizemore, Aster, 201 Sunvalley Terrace, Hazard 41701, 436-3402, 436-2107
- Sligh, Jim, 2601 Hampton Street, Ashland 41101, 325-1129, 739-5111
- Small, David E., 600 Arbor Drive, Louisville 40223, 245-7954, 895-6460
- Smith, Carmack, 523 East 3rd Street, Trenton, Tennessee 38382, 855-1963, 686-7232
- Smith, Jackie H., 147 Northbrook Trailer Park, Bowling Green 42101, 842-6891
- Smith, James H., Rt. 1, Box 437, South Shore 41175, 932-4497
- Smith, Joseph E., 1634 Walnut Street, Benton 42025, 527-9317, 395-4165
- Smith, Ronald A., 561 Lisa Drive, Lexington 40505, 299-9688, 255-5661, Ext. 371
- Snelling, Kenny, 823 Brawner Street, Frankfort 40601, 223-7081, 564-5971
- Sohan, John Patrick, 4600 Lynnbrook Drive, Louisville 40220, 451-3860, 451-3860
- Soper, Clyde B., Box 111, Millersburg 40348, 484-3487, 293-3969
- South, Stanley P., Route 3, Winchester 40391, 744-0357, 744-4812
- Spath, William J., 2922 White Plains Road, Louisville 40218, 452-9637, 584-5209
- Spaulding, Johnny R., Rt. 3, Box 66, Catlettsburg 41129, 739-6887, 325-8511, Ext. 326
- Staley, Jerry, 1117 Inca Trail, Georgetown 40324, 863-3440, 987-2240
- Stansbury, Charles F., Apt. 18 Riceville, Morehead 40351, 784-5135
- Staples, Jerry D., R.R. 1, Box 203, Henderson 42420, 827-3633, 826-9040
- Skikeleather, Clyde L., 730 School Street, Leitchfield 42754, 259-3885, 259-3161
- Staten, Jos. B., 4303 Wyola Court, Louisville 40218, 456-4777
- Staten, Michael J., 3039 Kozy Kreek, Louisville 40220, 458-4751, 585-5802
- Stephenson, Elmer B., Rt. 2, Milford Estates, Richmond 40475, 623-3699, 622-3271
- Stephenson, Harry, 1612 Hawthorn Lane, Lexington 40505, 299-1757, 233-8221
- Stewart, Phil R., 112 East 13th Street, Bowling Green 42101, 843-4734
- Stiene, Rick, 3511 Thomas Street, Erlanger 41018, 341-8411, 431-1234
- Stohr, James J., 323 Creekview Drive, Paris 40361, 987-3948
- Stoup, Robert A., 916 Washington Avenue, Flatwoods 41139, 836-8423, 325-8511, Ext. 309
- Stovall, Kenneth J., 2144 Glenworth Avenue, Louisville 40218, 451-6781
- Strader, Tim V., 2717 Cumberland Avenue, Ashland 41101, 325-3255
- Strain, Richard P., P.O. Box 472, Radcliff 40160, 351-4306, 624-2214
- Strange, Fred D., Jr., 3416 Kramers Lane #61, Louisville 40216, 448-1353, 447-3721
- Straus, William W., 212 Culpepper Drive, Lexington 40502, 266-6349, 252-2275
- Streible, Ronnie D., 204 Olde English Court, Louisville 40272, 937-1120, 624-8197
- Streicher, Richard A., 3249 Ellis Way, Louisville 40220, 458-5254, 584-7156
- Stuedle, Ray, 1404 Girard Drive, Louisville 40222, 425-3679, 893-3852
- Stumbo, Jack, 1146 Riverview Lane, Prestonsburg 41653, 886-3363, 886-3080
- Stutler, Joe, 1219 Audubon Road, Park Hills 41011, 291-5362, 542-4700
- Sullivan, A. G., 1921 Goodwin Avenue, Corbin 40701, 528-1282, 528-9035
- Sumner, Carl, 8711 Cedar Creek Road, Fern Creek 40291, 239-0783, 459-1030, Ext. 205
- Sutton, James A., 2111 Sutton Drive, Henderson 42420, 827-3186, 826-6958
- Sutton, Jim, Rt. 1, East Bernstadt 40729, 843-7428, 864-2241
- Swarts, Joseph C., 135 Lane Street, Coal Grove, Ohio 45638, 532-9349
- Swauger, Gary B., 19 Park Place, Fort Thomas 41075, 781-2935, 352-7036
- Swinford, John, 106 S. Elmarch, Cynthiana 41031, 234-2562, 234-5820
- Sword, Russ D., 601 Lovern Street, Hazard 41701, 439-2263, 439-1331
- Talbot, Wm. G. III, R. R. 1, Paris 40361, 987-4529, 987-4529
- Tate, Charles F., Christopher Square, Apt 91, Radcliff 40160, 351-5087
- Tate, Ken, Jr., 317 Hightower Road, Lexington 40502, 272-7064, 255-0835
- Taylor, Charles G., 222 Demaree Drive, Bardstown 40004, 348-9451, 348-9030
- Taylor, David, Rt. Box 79, Branchland, W. Va. 25506, 778-4756, 429-1381, Ext. 281
- Taylor, James R., 1823 Creston Place, Ashland 41101, 324-4841, 324-4841
- Thomas, Frank M., 629½ So. 44th Street, Louisville 40211, 774-2624, 774-6529
- Thomas, James J., 7407 Feyhurst Drive, Louisville 40258, 932-4875, 774-6465
- Thomas, Lyn H., Rt. 2, Calvert City 42029, 395-4035, 395-7121, Ext. 2446
- Thomas, Paul, 706 Gartrell Court, Ashland 41101, 324-9603, 329-3333, Ext. 8432
- Thomas, Raymond E., 1106 Main Street, Sturgis 42459, 333-2151, 338-5460
- Thomas, Raymond Earl, 212 Akin Avenue, Franklin 42134, 586-6297
- Thompson, Harrie G., Rt. 7, Box 137 Cleveland Road, Lexington 40502, 266-2819, 278-9346
- Thompson, Michael J., 628 N. 3rd Street, Bardstown 40004, 348-3838, 257-2088 (Lexington)
- Thompson, Thomas D., 97 Carran Drive, Ft. Mitchell 41017, 341-1809, 581-1322, Ext. 211
- Thompson, Victor Neil, 124 Garrard Street, Covington 41011, 261-7913, 971-9100
- Thornton, Daniel A., 119 Stacker Drive, Clarksville, Tennessee 37040, 648-2742, 648-2742
- Timmering, George E., 4109 Manner Gate Drive, Louisville 40220, 459-2705, 897-9441
- Towe, Paul F., 611 Lake Knoll Court, Erlanger 41018, 341-7895, 825-0370
- Trabue, David, 114 Maplewood Place, Glasgow 42141, 651-3436, 745-3349
- Trapp, Charles W., 34 Trapp Court, Alexandria 41001, 635-9250, 341-2700, Ext. 268
- Treas, Joe W., P.O. Box 653, Fulton 42041, 472-1604, 472-1836
- Treibly, Charles E., 4418 Signal Hill Road Louisville 40207, 893-5855, 451-9301
- Trice, Victor, 731 S. 35th Street, Louisville 40211, 778-9591, 491-3345
- Tucker, Charles N., 5353 B Kelly Street, Fort Knox 40121, 624-5063, 624-2816
- Tuitele, Matthew V. L., 203 Millbrooke Drive, Hopkinsville 42240, 886-8371, 886-5151, Ext. 231

(Continued in October Athlete)

## Basketball Officials Ratings

The following ratings were received on basketball officials registered with the K.H.S.A.A. during 1973-1974. The numbers following each name respectively represent the numbers of Excellent, Good, Fair and Poor ratings given to the official.

Ackerman, Joseph F., Jr., 0-2-0-0; Acton, Claude J., 0-6-0-0; Adams, James C., 5-8-3-0; Agee, Danny B., 4-10-6-5; Akemon, Rudy, 0-5-1-2; Akers, Harold, 1-0-0-0; Alexander, Darryl, 2-6-1-0; Alford, Orville, 0-2-2-0; Allen, Brent, 0-1-4-0; Allen, Doug, 7-3-3-2; Allen, Nelson Robert, 7-13-1-1; Allen, Yvon, 2-1-1-0; Allgood, Russell L., 5-7-1-1; Anders, Raleigh, 7-9-5-2; Anderson, Edward L., 4-4-1-3; Anderson, Luther S., 2-2-1-0; Asher, Ralph, 0-0-0-1; Atkins, James P., 0-0-0-1;

Bailey, Jimmy H., 1-2-3-0; Baker, Roger D., 1-1-0-1; Banks, Buddy, 3-8-1-0; Barker, Walter D., 1-2-0-0; Barry, Donald E., 0-0-2-0; Barton, Leon, 0-1-0-0; Bates, Gardner, Jr., 0-3-5-0; Bell, Clarence T., 16-5-1-0; Bell, Gary Michael, 0-2-1-0; Bell, Henry B., 5-4-0-0; Bell, Robert J., 5-17-1-0; Bell, Ronald K., 0-6-0-0; Bernardini, Bruno, 0-2-1-0; Bertsch,



Ron, 3-10-3-6; Beshears, Jim T., 10-15-3-0; Bevins, Wally L., 0-0-1-0; Bibb, Ennis W., 2-0-0-0; Biter, Charles D., 1-11-3-4; Black, Willis L., 24-11-0-0; Blackford, Robert, 0-1-0-0; Blackwood, Thomas W., 12-16-3-2; Blair, Kenneth, 0-1-0-0; Blankenbaker, W. Larry, 1-8-0-0; Blemker, Ray, 0-1-0-3; Blevins, Boone, Jr., 1-0-1-0; Bogar, Joseph D., 2-0-0-0; Bollinger, Billy J., 2-9-3-4; Bone, Gerald W., 0-2-0-0; Boyles, Paul E., 6-4-0-0; Bramble, James 4-6-3-0; Branstetter, Charles, 2-0-1-2; Bra-shear, Loy Ray, 7-6-6-2; Brewer, Jerry, 5-6-3-0; Bridges, Ralph L., 10-10-4-0; Briggs, Bruce E., 3-0-0-0; Brock, Alben, 19-15-2-0; Brock, John D., 3-11-3-1; Brock, Lavone, 0-0-1-3; Brockman, Gerald K., 3-7-6-1; Browder, Homer Lee, 5-1-5-0; Brown, E. C., 10-7-2-0; Brown, J. W. (Scoop), 9-8-0-0; Brown, Lyman D., 13-19-3-1; Browning, Earl, 6-10-5-3; Browning, Wayne, 9-7-1-1; Bruner, Jack C., 3-5-0-0; Bugg, James M., 2-4-0-1; Burch, Bill, 6-15-1-0; Burgess, Jack, 12-5-4-3; Burgess, James R., Jr., 8-4-1-0; Burkhart, James G., 3-4-0-0; Bush, Karmen B., 1-1-0-0; Bussell, Bryan, 0-1-0-0; Butcher, Douglas, 14-4-0-0; Butcher, Granville Bo, 1-1-0-0; Butcher, Stephen, 12-5-0-0; Butner, Billy N., 6-8-4-0;

Caldwell, James A., 15-22-2-1; Callahan, S. Gary, 1-0-0-0; Cariberg, John H., 5-3-2-3; Carpenter, Jasper, 1-1-0-0; Carr, Lawrence W., 0-1-2-2; Carrico, Tommy, 0-4-1-3; Cash, Charles C., 8-33-3-1; Cates, Billy C., 0-12-3-0; Cecil, James R., 2-0-0-0; Caldwell, Bill, 0-0-1-0; Childers, Jerry W., 0-0-1-0; Childers, Philip, 0-2-0-0; Clater, James F., 2-8-5-0; Cleavenger, Ed, 13-13-2-1; Click, Edgle, 5-1-0-0; Cobb, Mike, 4-13-0-1; Cochran, Ray D., 0-3-1-0; Colley, Lynn W., 4-14-1-3; Collier, Burnard, 1-3-2-1; Collier, Michael, 4-4-3-1; Collins, Hubert, 13-4-1-0; Collins, Ron, 10-16-3-0; Collins-worth, Kenneth, 1-0-0-0; Combs, Henry B., 2-7-1-1; Congleton, S. Jay, 9-0-3-0; Conley, Gary D., 2-0-1-0; Conley, Joseph D., 3-4-0-1; Coomer, George M., 0-0-1-0; Copley, Sidney M., 4-5-3-0; Cosby, Carol, 1-1-0-0; Cotton, Carl W., 0-2-0-0; Cox, Clarence (Chuck), 3-1-0-0; Cox, Ken, 7-6-3-0; Cox, Rufus A., 14-13-1-1; Crager, Bobby F., 3-20-6-3; Craig, Arthur P., 0-0-2-1; Cravens, Robert L., Jr., 0-0-0-1; Crawford, Thomas N., 2-7-0-1; Crutcher, Marion, 3-1-1-0; Cupp, Jackie R., 0-0-2-0; Curry, Randall L., 1-2-0-0;

Dame, L. J., 18-13-2-11; Daniel, Roger T., 1-2-0-0; Daniels, Leon, 0-0-1-0; Daniels, Robert A., 6-6-0-0; Dant, Joseph B., 0-7-2-2; Davenport, Bowman (Bo), 4-6-0-0; Davis, Jay W., 0-2-0-1; Davis, Tom, 3-10-2-0; Day, Bill E., 8-7-0-0; Day, Jack L., 5-4-1-0; Day, Roy E., 1-7-2-0; Deaton, Julian A., Jr., 0-1-0-0; Denham, Alan R., 0-1-0-0; Dennedy, Bob, 1-1-3-0; Denton, Calvin R., 0-1-0-1; DeVary, Bill, 20-14-1-0; Dick, James E., 3-0-1-1; Dill, Roger, 1-7-1-2; Dillihay, Ralph E., 16-26-4-6; Divine, Wayne L., 6-7-3-0; Dixon, Billy M., 4-12-0-0; Dixon, Ron, 0-1-0-0; Dobson, Kenneth, 0-3-2-3; Doll, Allen, 0-0-2-0; Dotson, Paul, 6-6-5-0; Dowd, James, 7-12-4-1; Downs, Joseph W., 8-7-2-0; Drake, Richard R., 12-19-6-4; Driskell, Earl, Jr., 8-3-6-0; Duer-son, W. R., 11-17-2-0; Duff, Birchell, 7-4-1-6; Duff, Earl, 15-8-5-0; Duncan, Mike K., 0-6-2-0; Durbin, Roy, 2-6-4-1; Duvall, Thomas Jay, Sr., 6-18-6-3; Dyke, Orville Dean, 0-14-5-1;

Early, Robert G., 0-0-0-1; Eary, Edward B., Jr., 1-2-0-2; East, William L., 0-1-0-0; Eaves, James K., 1-7-7-2; Edwards, Ernest S., Jr., 4-7-2-3; Edwards, James D., 0-2-1-0; Eisenhardt, James E., 0-1-0-0; Eldridge, Wayne R., 5-12-4-1; Ellington, Jerald, 1-1-2-1; Estes, Walter R., 2-11-5-0; Ewing, Ray F., 0-0-1-0;

Farley, Jimmy, 4-8-0-0; Farmer, Bill, 2-8-2-0; Farris, Joseph T., 6-7-2-0; Faulk, Terry, 1-7-1-0; Featherstone, Jerry, 0-3-0-0; Feger, George, 2-9-2-1; Feher, Al, 1-0-2-0; Fields, Rufus, Jr., 2-13-3-0; Finley, Howard, 1-14-7-2; Finley, Albert R., 7-13-9-6; Fiske, Charles N., 3-5-0-0; Florence, Darrell, 0-7-3-0; Floyd, Richard L., 0-2-1-0; Flynn, Bobby, 8-6-0-0; Ford, Donald R., 0-6-3-2; Frankel, Louis S., 2-2-1-0; Frazier, Mac, 0-6-1-0; Freppon, Tom, 8-17-0-2; Fritz, Sherman, 7-14-6-3; Fuller, John R., Jr., 2-11-3-0; Fultz, G. Roger, 0-1-0-0;

Gabbard, Jack, 0-0-0-2; Gaddie, Gary, 2-0-1-2; Gaines, Harvey, 3-5-4-2; Gaither, Gene, 3-10-1-1; Gardner, Gary, 3-2-4-0; Gaskin, Donald W., 4-7-0-3; Gentry, Dale J., 3-12-4-0; Gettler, John F., 2-4-1-1; Gibson, Fred W., 10-22-6-1; Goins, Edgar S., 11-6-0-1; Golden, Billy Joe, 12-4-0-0; Goldey, William H., 5-4-0-0; Goley, Jim, 4-14-10-0; Goode, Earl A., 4-18-3-2; Goodman, Jack, 8-8-1-0; Gordon, Roy T., 0-6-4-3; Gorrell, Howard, 8-14-2-0; Gover, Luid J., 7-2-2-0; Grace, Charles K., 0-0-1-0; Graham, James, 1-2-0-0; Graves, Kenneth J., 0-0-1-0; Graves, Walter S., 0-0-1-0; Greathouse, Bobby, 0-5-1-0; Green, Donald P., 3-28-5-3; Greenwell, Darryl, 0-4-1-1; Greer, Phil, 5-8-2-3;

Haas, Tom V., 5-8-1-2; Hackett, Wilbur, Sr., 3-10-3-4; Halbert, Hubert E., 0-6-1-0; Hall, Charles E., 7-6-3-2; Hall, Ted, 0-2-3-0; Hall, Tommy D., 2-4-1-1; Hall, William W., 12-2-1-0; Hamm, Gerald (Jerry), 2-6-3-1; Hammons, Wendell, 7-10-2-1; Hampton, Doug, 4-12-1-3; Hardin, Don G., 27-12-2-0; Hargis, Noel, 5-8-0-0; Harned, Vic, 13-15-1-0; Harper, Randall H., 11-20-3-3; Harper, Robie, 6-9-0-0; Harper, Tom C., 6-1-1-1; Harrison, John, 9-13-3-0; Harrison, Tim, 4-15-4-1; Hawkins, Donald H., 8-18-5-2; Hayden, John O., 2-16-7-0; Hayes, James V. (Pete), 4-14-2-4; Helton, Roger, 0-0-1-0; Henson, Don R., 0-10-0-0; Henson, Tony C., 7-6-1-2; Herrington, Kenneth, 0-0-1-1; Hicks, Gene, 3-8-2-5; Hill, Earl F., 2-9-1-1; Hill, James P., 13-19-1-4; Hines, Bob, 2-12-1-2; Hinton, Henry E., 11-10-4-4; Hollar, Lanny W., 1-9-2-3; Holmes, Eddie R., 0-2-1-0; Holt, Larry Kent, 0-2-1-0; Holt, Robert E., 6-17-6-6; Holt, Terrell, 1-8-1-0; Hook, Don, 4-10-0-0; Hoskins, Carl, 0-2-0-0; Houk, Jackie L., 7-3-6-0; Howard, Jackie Lynn, 0-0-0-1; Howard, James D., 2-4-3-1; Hubbs, Sonny, 6-12-2-1; Hughes, Rufus L., 4-5-1-0; Hummel, Thomas, 4-20-5-0; Hun-ley, Neil P., 8-5-1-0; Hunt, Leonard, 15-10-1-0; Hurley, Robert, 2-2-1-5; Hurst, Terry, 0-1-0-0; Hut-chens, Jim, 10-15-2-2; Hyland, Frank Dixon, 2-3-0-0;

Irwin, Charlie, 10-3-2-0;

Jackson, Dennis, 2-13-4-1; Jackson, Ed, 11-14-7-4; Jackson, Donald L., 7-5-0-0; Jenkins, Jerry, 15-10-2-1; Jent, Richard L., 1-1-1-0; Johnson, David A., 3-13-3-1; Johnson, Gayle W., 2-6-5-3; Johnson, Harry B., 10-17-2-1; Johnson, James M., 7-9-3-1; Johnson, Jerry L., 0-4-3-0; Johnson, Michael, 0-0-0-2; Johnson, Walter, 11-10-0-0; Johnson, William G., 0-4-0-0; Jones, Denver, 4-12-6-0; Jones, Frank, 4-10-3-0; Jordan, Jim, 0-0-1-0;

Kaufman, Leonardo D., Sr., 0-0-1-0; Kazunas, Gerald L., 2-4-3-0; Keatley, James H., 1-1-1-0; Keeling, Reuben, 0-6-9-0; Kelley, Larry, 0-1-2-1; Kennedy, Wayne, 0-0-1-1; Kidd, Gary G., 0-1-0-1; King, James A., 6-9-2-1; King, Raymond H., 9-7-9-0; Kirk, Charles, 6-13-0-0; Kirklin, Luther, 1-1-1-0; Knight, Bill, 8-15-0-4; Kouns, Robert, 17-13-3-0;

Lamar, Huston O., 1-0-0-0; Lamastus, Randall, 0-3-1-1; Lambert, Irvin, 5-12-2-0; Latkovski, Andy, 1-14-4-3; Laubheimer, Don T., 13-11-2-0; Law-son, Ronald G., 0-0-1-1; Lawson, Rondell, 1-1-0-0;

Layne, Bert, 0-6-1-0; Layne, Malcolm Darwin, 1-3-2-0; Leber, Jerry L., 3-8-2-1; Ledford, Thos. B., 0-6-0-0; Lefevers, Colman J., 7-14-6-0; Lehkamp, Ken, 1-3-8-2; Leneave, Robert, 0-1-0-0; Lequire, H. M., 3-17-1-0; Letcher, Ronnie, 0-1-0-0; Lewis, Tommy (Tick), 1-7-0-0; Liedtke, Joseph S., 0-3-0-0; Lile, Clyde F., 4-13-1-1; Lillie, Wes, 1-7-2-1; Littlepage, Pryce, 10-10-3-0; Lloyd, David, 1-4-2-0; Long, James E., 7-1-1-0; Long, Robert F., 9-10-3-0; Long, Steve, 5-6-0-0; Lusby, George, 7-14-2-0;

McCarley, John W., 14-10-1-0; McClure, Frank E., 0-1-1-0; McClure, Jerry, 0-2-1-1; McClure, Willis B., 0-2-0-0; McCowan, Connell, 0-2-1-1; McCoy, Hayse, 6-3-3-2; McDannold, Buddy, 3-3-0-1; McGinty, L. V., Jr., 3-22-6-1; McKenzie, Dwight E., 2-4-1-2; McKinney, Adelle, 0-1-0-0; McLane, Albert I., 11-10-3-1; McLean, Gordon, 0-8-5-0; McLeod, Robert, 0-3-2-0; McMenemy, John H., 8-15-1-0; McMillin, Larry, 3-13-2-2; Madden, McElroy, 0-0-0-1; Maddox, Richard, 0-5-0-1; Maines, George E., 10-6-4-0; Mang, Berry W., Jr., 2-6-1-2; Mathis, Mike, 4-2-2-0; Mauney, Bill, 7-3-1-0; Maxey, Michael, 0-1-0-0; May, Larry, 0-0-0-2; Mayer, John P., 0-4-2-1; Maynard, James L., 1-1-1-0; Meadors, William, 3-9-3-1; Meadows, Marvin, 2-21-2-0; Melton, Bob, 1-1-0-0; Meredith, Denny, Jr., 17-12-1-1; Meredith, Wilmoth (Billy), 5-14-0-2; Middleton, Johnny, 6-11-5-0; Milbern, Daniel L., 6-2-0-0; Miller, Harold P., 0-13-1-1; Mills, Dwight K., 2-8-1-0; Mills, Lawrence G., 0-2-1-0; Moberly, Harold F., 0-1-2-0; Mobley, Clarence E., 0-1-0-0; Monks, Ronald, 4-11-2-0; Montgomery, Chester, 19-13-3-2; Moore, Franklin, 4-24-3-0; Moore, Marvin, 14-12-1-2; Moore, Robert, 19-20-8-3; Morgan, Earl M., 0-0-1-0; Morgan, Richard, 1-4-3-1; Morris, Edmund A., 0-1-0-0; Morris, Larry G., 1-3-1-1; Morrison, Daniel G., 4-9-2-1; Morse, Richard K., 12-9-4-2; Moser, Rudy C., 18-14-3-0; Moss, Marvin T., 0-1-0-0; Mullins, William B., 0-0-0-1; Murphy, Michael P., 0-10-3-1; Murrell, Allen L., 16-15-0-1; Murt, Gene T., 0-1-0-1;

Nance, David, 0-2-1-0; Napier, Charles M., 3-7-1-1; Napier, Wallace R., Jr., 0-2-2-0; Nelson, Clarence R., 1-9-6-0; Newman, Bill, 3-0-1-0; Newsome, William, Jr., 5-5-0-0; Newton, Danny L., 1-6-7-3; Newton, John L., 2-6-0-0; Nieland, Doug, 1-3-0-0;

Omer, Harold G., 0-3-1-2; O'Nan, Norman, 16-12-1-0; Overbey, Jerry, 2-3-1-0; Owens, Bruce E., 13-4-2-2; Owings, Hank, 0-0-3-0;

Pace, Donald W., 12-8-1-0; Page, James N., 1-3-0-1; Parsons, Kenneth, 8-10-3-0; Pearl, George W., Jr., 3-0-0-0; Peeler, Charles A., 2-6-2-0; Peeno, Harry R., 9-11-6-1; Pelphrey, Jack, 8-7-0-0; Pence, Wm. Jerry, 5-9-2-3; Perkins, Ronnie, 5-10-3-3; Perry, James E., 9-18-3-0; Phelps, Ray, 3-5-0-1; Phillips, Gene, 3-1-2-2; Phillips, Harold D., 1-4-2-0; Phillips, Thomas M., 0-0-1-0; Pietrowski, Paul, 1-12-2-0; Poe, Thomas (Buddie), 14-18-2-0; Pogue, Ivan Gordon, 2-4-0-0; Powell, Billy R., 1-1-0-0; Powell, Mike, 3-5-5-0; Powell, Ronald R., 0-0-1-0; Powers, Clark, 5-8-2-0; P'Pool, Lanny E., 1-3-4-1;

Quisenberry, James M., 1-1-0-0;

Racke, Jerry W., 3-8-8-1; Radjunas, Edward, 5-8-5-0; Ramey, Gary, 12-4-2-0; Ramey, Herb, 7-13-3-0; Ramsey, Mike, 2-0-0-0; Randolph, D. E., 6-0-1-1; Rascoe, Robert B., 4-16-0-0; Redle, Joel E., 3-15-5-0; Reed, Charles R., 3-2-0-0; Reeves, Curtis, 0-1-1-0; Reinhardt, Myron S., 12-16-1-0; Reliford, Paul, 5-14-4-1; Rexroat, Jerry L., 10-9-2-0; Rhodes, Cecil, 1-4-1-0; Rich, Dennis W., 3-6-6-0; Riggs, Stan, 0-0-1-1; Ring, Bill, 13-12-2-1; Ritter, Goebel, 0-1-0-0; Roark, Forrest G., 8-13-3-2; Robinson,

Tony L., 0-2-1-0; Rodgers, Tom H., 5-13-3-1; Roe, Buddy, 3-5-1-0; Roessel, Joseph, 8-11-4-1; Rose, Scott, 2-7-1-0; Runyon, Tommy D., 7-2-0-0;

Salyers, John D., 0-1-0-0; Sammons, C. J., 0-1-2-0; Sams, Glenn, 4-5-0-0; Sargent, Steven F., 0-0-3-1; Saylor, Carlee, 0-7-2-6; Schmidt, Tom, 5-7-2-0; Scott, Emmanuel, 4-4-3-2; Scott, Sidney H., 0-0-1-1; Scott, Willie L., 0-1-0-0; Scurry, Henry L., 0-1-0-0; Sears, Wilson, 10-8-1-1; Seavers, Joe, 3-19-4-1; Sellier, Edward F., Jr., 9-16-0-0; Selvy, Curt, 10-5-2-1; Sharp, Ronnie, 1-7-4-1; Shaw, Earl, 9-10-2-0; Shearer, Robert L., 0-1-3-1; Shelton, Lester T., 0-2-0-0; Shinbaum, Ralph, 1-6-4-2; Shipp, David E., 1-0-0-0; Shuck, Thomas G., 10-17-1-0; Sims, Frank D., 17-11-8-2; Singleton, Bobby L., 1-7-4-0; Sizemore, Austin, 6-6-0-2; Skaggs, Bobby L., 9-7-3-2; Skaggs, Robert L. (Bill), 9-11-5-5; Smith, Benny, 1-5-4-1; Smith, Mickey K., 0-0-1-0; Smith, Robert L., 7-11-3-1; Smith, Roy M., 3-2-3-0; Smith, Wayne N., 7-3-1-0; Smith, Willard N., 7-4-1-0; Smith, William E., 1-1-0-0; Spencer, Irv, 14-12-5-0; Spoonamore, Jim, 18-10-1-1; Stark, Douglas O., 2-16-3-5; Stephens, Stephen D., 1-0-0-0; Stephenson, Harry S., 6-13-3-0; Stethen, James E., 12-18-1-3; Stevens, James L., 1-4-0-0; Stevenson, M. G., 0-3-0-0; Stewart, Dale, 0-8-3-2; Stiff, Maurice (Moe), 4-14-4-2; Stikeleather, Clyde L., 22-17-3-0; Stoess, Henry L., 4-15-3-3; Stone, Sidney P., 0-1-0-0; Stovall, Tom, 7-10-5-2; Strain, Richard P., 4-6-4-2; Strasburger, Greg, 1-1-0-0; Strong, Charles, Jr., 4-9-3-3; Studle, Ronald, 2-5-0-0; Sullivan, Dan L., 10-24-3-0; Sumner, Carl, 1-20-4-2; Switzer, Bradley, 0-1-1-0; Switzer, Richard J., Jr., 1-6-3-4; Swope, Tom, 5-10-5-3;

Taylor, Carl D., 2-0-0-0; Taylor, Donald D., 1-6-5-2; Taylor, Ed, 5-14-3-0; Taylor, John O., 6-8-1-0; Thomas, Billy, 0-5-3-3; Thompson, Joe, 0-2-0-0; Thompson, Ronnie, 9-0-3-0; Thompson, Thomas A., 8-11-4-0; Thompson, Thomas D., 7-18-8-0; Tindall, Clifford, 1-0-0-0; Tippett, Charles, 3-2-3-2; Toombs, Billy L., 0-3-0-0; Towler, Stephen W., 12-11-3-1; Trabue, David, 0-1-1-0; Triplett, Herb, 0-3-0-0; Trombley, Norman, 0-0-1-0; Troutman, Doyle, 2-1-1-1; Turner, Lonnie, 0-2-3-2; Turpin, Donald W., 1-2-1-0; Turpin, Ronald D., 1-0-2-1; Tyre, Don, 3-0-0-0;

Urlage, Richard, 6-23-5-4;

Vance, Hunter, Jr., 0-2-1-0; Vanover, J. W., 0-7-1-0; Vanover, Wiley G., 0-1-0-0; Varner, Ray G., 7-12-2-1; Vincent, Dale, 1-0-0-0; Vories, Dick, 13-24-2-1; Vories, Gary W., 1-6-0-1; Votaw, Tony, 0-0-1-0;

Wagoner, Robert G., 1-0-0-0; Walker, Joe D., 2-1-0-0; Wallace, Curt, 6-5-1-0; Wallen, David, 0-0-1-0; Waller, Bob, 3-7-2-0; Walter, Darwin, 0-1-0-0; Ward, Bob J., 8-10-3-1; Wedding, Tommy, 0-1-0-0; Weihe, Robert J., 0-6-1-0; Wells, Glen, 2-3-1-0; Wesley, Loyal, 4-4-1-0; Weyer, James, 6-26-4-1; Whitaker, Charles, 0-4-1-3; White, William L., 0-3-5-3; Whitahead, Christopher, 5-14-3-0; Whitt, Jim, 1-0-0-0; Wilcox, Ursal R., 0-5-0-2; Williams, Bobby, 13-8-2-2; Williams, Brian, 0-1-0-0; Williams, James A., 0-1-0-0; Williams, Roger, 12-14-0-2; Williams, S. Jack, 4-7-0-3; Wilson, George G., III, 0-0-1-1; Wilson, Paul A., 1-5-1-0; Winchester, Roy L., 11-14-3-4; Winfrey, Shelby, 3-11-7-2; Wingfield, Felix G., 1-12-5-2; Withrow, Roy D., 1-8-5-0; Wood, Harold R., 0-4-3-1; Woods, Gene B., 0-10-4-0; Woosley, Donald, 0-0-1-0; Wooton, George B., 7-14-4-0; Wulfeck, James, 1-7-3-0; Wyatt, Henry, 0-2-0-0;

Young, William F., 0-2-3-0;

Zimmerman, Ronnie D., 0-2-0-0;



## Member Schools in Basketball, 1973-1974

### Officials' Ratings on Sportsmanship of K.H.S.A.A.

(Continued from August ATHLETE)

SCHOOL	COACH				CROWD				TEAM				
	E	G	F	P	E	G	F	P	E	G	F	P	
Oneida Baptist Inst. -----	17	13	4	4	5	25	9	3	2	20	8	9	2
Owen County -----	22	11	4	4	4	15	17	2	2	17	18	4	2
Owensboro -----	33	6	0	0	2	29	10	2	0	21	14	6	0
Owensboro Catholic -----	15	10	4	0	0	13	11	5	0	14	12	2	1
Owsley County -----	19	16	0	1	1	24	9	3	0	21	13	2	0
Paducah Tilghman -----	26	15	2	0	0	23	15	5	0	22	20	0	0
Paintsville -----	36	2	1	0	0	29	8	2	0	31	7	1	0
Paris -----	38	11	4	0	0	23	15	5	0	23	13	6	0
Park City -----	50	14	8	5	5	31	21	4	1	31	21	4	1
Paul G. Blazer -----	23	8	3	2	2	33	16	3	5	22	12	3	0
Pendleton Co. -----	35	12	3	0	0	33	16	2	1	37	12	3	0
Pheips -----	19	4	8	0	0	14	6	5	6	17	7	5	2
Pikeville -----	28	8	5	0	0	22	14	4	1	24	10	7	0
Pine Knot -----	35	7	1	1	4	29	12	2	0	28	7	6	0
Pineville -----	13	13	2	4	6	16	11	4	1	14	11	6	1
Pleasure Ridge Park -----	16	11	6	6	6	16	11	7	5	14	13	6	0
Portland Christian -----	28	17	7	0	0	26	21	4	1	27	22	3	0
Powell County -----	18	15	7	0	0	20	18	0	0	25	15	0	3
Prestonsburg -----	33	8	2	4	4	21	17	1	1	31	10	3	0
Providence -----	34	23	8	1	0	21	32	2	1	30	27	8	5
Pulaski County -----	32	12	2	0	0	28	13	5	0	27	14	5	1
Raceland -----	21	5	1	0	0	18	8	1	0	17	6	2	0
Red Bird Settlement -----	16	13	2	1	1	18	11	2	1	17	11	2	0
Reidland -----	15	19	3	0	0	12	21	4	0	21	16	0	0
Riverside Christian -----	27	7	4	0	0	24	9	5	0	25	10	3	0
Rockcastle Co. -----	33	8	3	1	1	27	12	5	1	33	8	4	1
Rowan County -----	30	3	6	0	0	32	5	1	1	33	4	1	0
Russell -----	25	3	3	1	23	7	7	1	0	26	5	0	0
Russell County -----	17	8	2	0	18	7	2	0	0	18	8	1	0
Russellville -----	29	10	4	1	26	13	3	2	2	26	15	2	0
St. Henry -----	27	13	4	0	0	27	13	4	0	29	10	1	0
St. Mary -----	41	7	2	2	26	20	5	1	1	37	11	1	1
St. Patrick -----	28	9	3	1	24	8	7	2	2	26	11	3	0
St. Romuald -----	29	11	4	0	24	18	2	0	0	25	17	2	0
St. Thomas -----	33	8	6	0	35	8	2	2	2	29	10	7	1
St. Xavier -----	27	12	3	1	26	13	2	2	2	28	10	5	0
Salyersville -----	28	7	3	0	42	8	3	3	3	21	10	7	0
Sayre -----	33	6	4	0	32	9	1	1	1	34	7	2	0
Scott County -----	35	8	4	2	31	14	3	1	29	16	4	0	0
Scottsville -----	36	11	9	1	36	13	5	3	33	14	10	0	0
Sedalia -----	20	17	2	0	13	24	1	1	1	14	19	6	0
Seneca -----	20	11	4	2	16	17	3	1	1	18	14	4	1
Shawnee -----	21	3	4	0	17	9	1	1	1	17	6	5	0
Shelby County -----	24	14	5	3	21	17	6	2	23	17	5	1	1
Shelbyville -----	21	12	7	1	18	17	6	0	0	20	14	6	1
Sheldon Clark -----	27	13	4	1	26	13	5	1	20	15	7	3	0
Shopville -----	30	11	8	0	26	17	1	5	29	12	5	3	0
Silver Grove -----	35	8	2	0	34	7	4	0	35	6	4	0	0
Simon Kenton -----	33	12	2	0	30	12	4	4	1	35	10	1	1
Somerset -----	25	11	3	3	20	14	3	3	25	10	3	2	0
South Hopkins -----	37	14	3	1	26	21	7	1	25	19	11	0	0
South Marshall -----	8	19	8	2	7	26	4	0	0	7	21	8	1
Southern -----	22	9	3	3	19	13	5	0	23	13	1	0	0
Stanford -----	21	10	5	1	22	9	4	1	23	9	3	1	1
Stuart -----	16	17	3	3	16	14	8	1	16	18	4	1	0
Symsonia -----	24	10	1	1	18	17	1	0	21	14	1	0	0
Tates Creek -----	32	5	2	2	26	10	3	2	32	4	5	0	0
Taylor County -----	35	13	3	0	36	13	1	1	37	13	1	0	0
Taylorsville -----	37	24	5	2	36	25	7	0	30	31	7	0	0
Thomas Jefferson -----	22	9	4	1	18	14	3	1	20	10	6	2	0
Todd County Central -----	25	13	5	3	18	23	5	0	18	19	7	0	2
Tollesboro -----	30	11	4	1	26	15	3	2	23	13	7	3	3
Tompkinsville -----	33	20	4	1	32	22	4	0	22	22	3	1	0
Trigg County -----	29	7	3	0	19	14	2	4	21	17	1	0	0
Trimble County -----	29	12	2	0	22	16	5	0	21	20	2	0	0
Trinity (Louisville) -----	37	12	1	0	29	18	2	1	30	16	4	0	0
Trinity (Whitesville) -----	31	12	3	0	27	19	0	0	27	19	0	0	0
Union County -----	25	13	3	3	22	19	3	0	21	22	1	0	0
University Breckinridge -----	27	4	2	0	27	4	1	1	26	5	2	0	0
Valley -----	27	13	1	1	25	13	3	1	25	15	1	1	0
Virgie -----	18	8	2	1	12	14	3	0	17	12	0	0	1
Waggener -----	31	7	2	2	28	10	3	0	31	9	1	0	1
Walton-Verona -----	24	17	9	2	33	16	4	3	29	16	9	5	0
Warren Central -----	20	12	8	0	0	21	12	3	3	25	9	1	3
Warren East -----	35	7	3	6	34	9	6	2	33	10	5	2	0
Washington County -----	36	6	5	2	33	14	2	4	34	11	6	2	0
Wayne County -----	19	13	5	1	20	16	2	0	21	11	6	4	0
Webster County -----	32	18	4	2	26	25	2	2	32	17	4	0	3
West Carter -----	21	4	0	0	33	2	0	0	27	4	4	0	0
West Hardin -----	30	10	2	0	20	9	3	0	27	11	4	5	0
West Hopkins -----	28	31	6	1	22	36	5	3	20	40	21	1	0
Western (Louisville) -----	38	14	4	0	29	22	5	0	29	21	6	6	1
Western (Siani) -----	20	13	4	2	20	11	7	1	18	14	9	3	0
Westport -----	11	10	8	5	16	12	3	3	14	8	6	1	3
Wheelwright -----	40	8	4	0	28	20	4	2	37	6	9	0	0
Whitesburg -----	22	12	3	0	15	14	6	0	18	17	2	0	0
Whitley County -----	27	13	1	1	27	9	3	3	26	13	3	0	0
Williamsburg -----	19	9	1	0	18	10	1	0	19	7	3	0	1
Williamstown -----	28	15	5	0	26	20	1	0	25	18	7	4	0
Wingo -----	25	12	2	0	15	10	6	3	16	16	4	1	2
Wolfe County -----	34	13	2	2	35	10	6	0	31	14	4	0	0
Woodford Co. -----	36	9	6	0	26	17	4	3	30	18	4	3	2

In Choosing An Insurance  
Program, Service And  
Benefits Should Always  
Be Considered First.

Our Customers Have Found  
That They Get Full Value  
For Their Premium Dollar.  
Do You?

---

*The Kingden Company*

W. E. KINGSLEY

GENERAL AGENT

CHARLES C. PRICE

AL J. ARBOGAST, C.L.U., Mgr.

Life Department

210 MALABU DRIVE

LEXINGTON, KY. 40502

PHONE 276-1472

P. O. BOX 7100

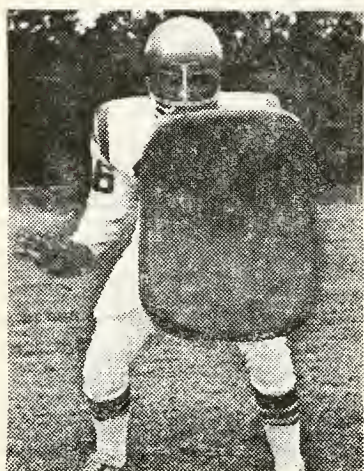


Dial 1-502-651-5143

# Riherd's SPORT SHOP

734 EAST MAIN STREET  
GLASGOW, KENTUCKY 42141

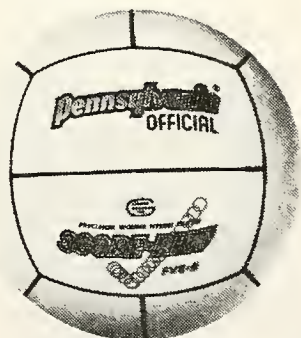
## Leather Basketball



### F564 PREMIER Oregon Shield

Solidly filled with Dura-Lite foam plastic. Eliminates old style bladder break-downs. Cover is of 18 ounce vinyl coated nylon available in Gray, Red, Blue, Gold, White and Green—completely waterproof and mildew resistant. Size is 25" long, 18" wide and 4" thick. Weighs 4 lbs. Equipped with two heavy nylon handles at rear. All dacron stitched throughout.

Special Price \$14.95



### PVH-6 Pennsylvania Volley Ball

Score-Rite Volley Ball. Economy model. 18 panel, full molded waterproof composition cover. Nyloc ply carcass construction. Official weight and size.

Special Price \$8.95



### X10L MacGregor Premium Basketball

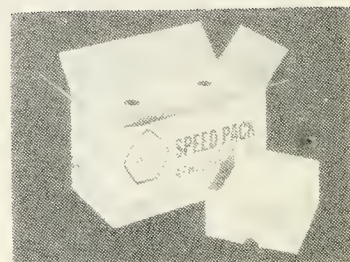
Rebound and reaction are dependably consistent because "Last-Built" construction assures absolute uniformity of size and shape. Features molded channel seams and a deep pebble grain finish with tanned-in "touch" applied over a molded and vulcanized nylon wound carcass. Premium quality materials and superior workmanship result in a ball that offers maximum fingertip control and performance.

\$19.95 LIMITED STOCK



350 Tom Leg Weights Five pounds per pair gross weight. Heavy duty, long wearing web belt. Special "grip-tight" buckle. Cross-stitched for maximum comfort. Sewn with high strength nylon. Finest quality reinforced vinyl.

Special Price \$7.65 Pr.



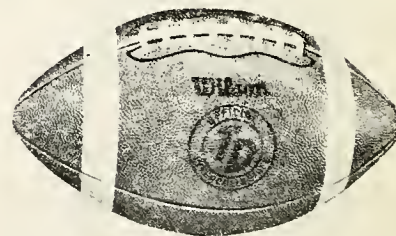
## J & J Tape

### 5190 Johnson & Johnson Zonas Pack

SPEED PACKS contain the equivalent of six standard 12" x 10 yd. rack rolls (one-half case). Slide out, dispensing tray delivers 32 pre-stacked, 1½" x 15 yd. rolls in convenient 6" high columns. The 15 yd. roll is sufficient to tape two ankles.

Special Price \$19.80

### Wilson Leather Football



### F1202 Wilson T D Football

Exclusive, Wilson tanned-in tacky feel allows confident, effective ball handling. Premium, specially selected, pebble-grain cowhide leather. Three-ply, twill lining, specially processed. Valve and lacer holes ruggedly reinforced. Snug concealed lockstitching throughout. Finest butyl-rubber bladder. Durable, double lacing. White calfskin outer lace. Tan with two white bands.

Special Price \$18.95