

3-1-1975

The Kentucky High School Athlete, March 1975

Kentucky High School Athletic Association

Follow this and additional works at: <http://encompass.eku.edu/athlete>

Recommended Citation

Kentucky High School Athletic Association, "The Kentucky High School Athlete, March 1975" (1975). *The Athlete*. Book 208.
<http://encompass.eku.edu/athlete/208>

This Article is brought to you for free and open access by the Kentucky High School Athletic Association at Encompass. It has been accepted for inclusion in The Athlete by an authorized administrator of Encompass. For more information, please contact Linda.Sizemore@eku.edu.

THE KENTUCKY



High School Athlete

FERN CREEK HIGH SCHOOL
1975 CHAMPIONSHIP WRESTLING TEAM



(Left to Right) Tom Kurtz, David Smith, Steve Miller, Kerry Hall, Eddie Thomas, Jeff Hillerich.

Member Of National Federation of State High School Associations

Official Organ of the
KENTUCKY HIGH SCHOOL ATHLETIC ASSOCIATION

MARCH 1975

**HENRY CLAY H. S. GIRLS' GYMNASTICS TEAM
1975 K.H.S.A.A. STATE CHAMPION**



(Left to Right) Front Row: Kay Polites, K. K. Sears, Terry Lindsey, Debbie Cornett. Second Row: Nora Geoghegan, Carole Beard, Mary Harris, Tammy Cornett, Andree Polites.

**TATES CREEK H. S. BOYS' GYMNASTICS TEAM
1975 K.H.S.A.A. STATE CHAMPION**



(Left to Right) Front Row: Danny Lacy, Kevin Wilkins, Scott Wilce. Second Row: Tom Alexander, Bill Williams, Rick Rushing, Bill Blount.

The Kentucky High School Athlete

Official Organ of the

Kentucky High School Athletic Association

VOL. XXXVII—NO. 8

MARCH, 1975

\$1.00 Per Year

1975 BASEBALL EARLY SEASON QUESTIONS

INSTALLMENT I

EDITOR'S NOTE: These interpretations of the rules of the National Federation Baseball Committee do not set aside nor modify any rule. The rulings are approved and apply to the situations for which they are given.

CLIFFORD B. FAGAN,
Editor, National Federation Publications

1. **Play:** R1, who is on 1st base, steals 2nd base during the pitch. While enroute towards 2nd, his head protector falls to the ground.

Ruling: In such situations, the umpire must decide whether the losing the head protector was done intentionally. If it was not intentional, then there is no penalty. On the other hand, if the umpire witnesses R1 deliberately remove his head protector while advancing, it is the duty of the umpire to declare R1 out after the play has been completed.

2. **Play:** B1 has two strikes. The next pitch touches the ground in front of home base and bounces through the strike zone. B1 swings at the pitch and F2 secures the ball in his mitt. F2, believing that he has caught the ball, throws the ball to F5 at 3rd base to start the ball around the infield believing that B1 has struck out. B1 during this latter action advances to 1st base while F5 throws the ball to F6 who returns the ball to F4.

Ruling: B1 is not out. When the pitch struck the ground in front of home base, it no longer was possible to catch it. The definition of a catch provides that the ball must be caught in flight.

3. **Play:** B1 hits a line drive which is inside the foul line when it passes over the fence on the front of the stand, but which is blown by the wind or which curves so it strikes the back of the stand which is outside the foul line extended.

Ruling: This is a fair ball.

4. **Play:** Do appeal plays include the following: Batting out of order; intentionally dropping a fair fly or fair line drive; running too far out of the base line to avoid being tagged; interfering with a batted ball; obstructing a runner; or interfering with a batted ball with detached player equipment?

Ruling: No. In these cases, the umpire calls the infraction even though no opponent calls it to his attention.

5. **Play:** F3 reaches for a low throw and traps the ball on the ground before the runner touches first base. Is the runner out?

Ruling: He is out if the umpire rules that the ball was in the grasp of the gloved or bare hand, even though it was touching the ground. In close plays, the runner is usually given the benefit if there is any doubt as to whether the ball was actually gripped in time.

6. **Play:** The catcher has the ball in his glove when he (a) tags the runner with the glove; or (b) he tags the runner with the hand which does

not have the ball in it. Neither time does the ball come in contact with the runner.

Ruling: Touching with the glove or the hand which holds the ball is the same as touching the runner with the ball. In (a), the runner is out. In (b), the runner is not out.

7. **Play:** B1 has a count of 1 ball and 2 strikes when the team captain or coach decides to put in a pinch hitter, S1.

Ruling: A coach should ask the umpire to call time for substitution. When S1 enters, he is charged with 1 ball and 2 strikes. If S1 strikes out, the strike-out is charged against B1 because he had more than half of the allotted number of strikes. In any other case, the time at bat is charged to S1.

8. **Play:** F3 throws his cap or his glove against a batted ball. It is: (a) a fair ball which has struck 1st base and is rolling over foul ground when struck; or (b) on or over foul ground but such that it might have become fair if there had been no interference; or (c) clearly a foul ball.

Ruling: In (a) and (b), 3 bases are awarded to each runner including the batter-runner. In (c), there is no penalty.

9. **Play:** With R1 on 1st base, B2 bunts to F3 who fields the ball on the first bounce near the foul line. B2 stops and reverses to run toward home base in order to avoid being tagged out by F3, who then throws to F6 for a force-out on R1 and the relay throw fails to retire B2 at 1st base.

Ruling: As long as B2 did not touch or run beyond home base nor leave the base path to avoid being tagged, his action is entirely legal.

10. **Play:** To establish a running start after a fly or line drive has been touched, R1 stands more than 3 feet behind 2nd base.

Ruling: R1 is out for being out of the base path to gain an advantage. The umpire should declare him out immediately, the same as for a runner who leaves the base path to avoid being tagged out. This is not an appeal play situation.

11. **Play:** R1, R2 and R3 are on 3rd, 2nd and 1st bases, respectively, with none out. B4 attempts to bunt. All runners break with the pitch. B4 pops the ball into the air near the 1st base foul line and tackles or runs into F3 to prevent the execution of a double play.

Ruling: The ball becomes immediately dead. The umpire shall declare both B4 and R1 out. R2 and R3 must return to 2nd and 1st bases, respectively.

12. **Play:** R1 is on 2nd and R2 on 1st with two out and B5 is at bat with: (a) a count of ball three and strike one; or (b) with a no ball, no strike count when the coach of the defensive team decides that he desires to have the batter given an intentional base on balls. How should this be administered?

Ruling: The rule provides either the coach of the defensive team or the catcher shall notify the umpire-in-chief that the defensive team desires to give the batter an intentional base on balls. At this time the umpire-in-chief shall signal and de-

(Continued on Page Twelve)

Published monthly, except June and July, by the
Kentucky High School Athletic Association
Office of Publication, 560 E. Cooper Dr., P. O. Box 7502,
Lexington, Ky. 40502

Second class postage paid at Lexington, Kentucky
Acceptance for mailing at special rate of postage provided
for in Section 1103, Act of October 3, 1917, authorized
May 3, 1926.

Editor **JOE B. MANSFIELD**
Assistant Editor **JEAN BATSEL**
Assistant Editor **TOM MILLS**
Assistant Editor **LOUIS STOUT**
Assistant Editor **BILLY V. WISE**

Lexington, Kentucky

BOARD OF CONTROL

President **W. P. WHEELER** (1971-1975), Owensboro
Vice-President **LOUIE MARTIN** (1972-1978), Corbin
Directors **Eldon E. Davidson** (1974-1977), Monticello;
Andrew J. Fulz (1972-1976), Olive Hill; **Arthur R. Hawkins**
(1972-1976), Mt. Sterling; **Cecil Held** (1974-1977), Symsonia;
George E. Sauer, Jr., (1974-1978), Louisville; **Frank B. Simpson**
(1972-1976), Louisville; **Ray Story** (1974-1978),
Radcliff; **Feirce O. Woods** (1974-1975), Flemingsburg;
Conley Manning, State Dept. of Education representative.
Subscription Rate \$1.00 per year

From the Commissioner's Office

REPORTS PAST DUE

1. School's Report on Basketball Officials
2. Official's Report on Schools (Basketball)

Spring Meets

Tentative dates have been set for the various
spring meets and tournaments in rifle marksmanship,
baseball, track, golf and tennis. They are as
follows:

- April 26, State Rifle Championship
- May 12, regional golf tournaments (sites given
below)
- May 13-16, district baseball tournaments
(sites given below)
- May 17, regional track meets (sites given be-
low)
- May 20-21, state golf tournaments
- May 21-23, regional baseball tournaments
(sites given below)
- May 24, state track meets
- May 28-29, Boys' Individual State Golf Tour-
nament
- May 30-31, regional tennis tournaments (sites
given below)
- June 2-5, State Baseball Tournament
- June 6-7, State Tennis Tournament

Attention, Principals

Under the requirements of K.H.S.A.A. By-
Law 28-3, head baseball coaches and registered
baseball officials are required to attend at least
one rules interpretation clinic.

The schedule for the baseball clinics is given
below. Principals of member schools sponsoring
baseball teams should not allow their teams to
begin their 1975 schedules unless there has been
compliance with the rule mentioned.

Clinic Schedule

- March 16 (2:00 P.M.) — L. T. Smith Stadium,
Western Ky. University, Bowling Green
- March 25 (7:30 P.M.) — Mason County High
School, Maysville

- March 31 (7:00 P.M.) — Somerset High School,
Somerset
- April 1 (7:00 P.M.) — Middlesboro High School,
Middlesboro
- April 2 (7:00 P.M.) — Hazard High School, Hazard
- April 3 (7:00 P.M.) — Johnson Central High
School, Paintsville
- April 4 (7:00 P.M.) — Paul G. Blazer High School,
Ashland
- April 6 (2:30 P.M.) — Henry Clay High School,
Lexington
- April 7 (7:00 P.M.) — Campbellsville High School,
Campbellsville
- April 8 (7:00 P.M.) — Hopkinsville High School,
Hopkinsville
- April 9 (7:00 P.M.) — Paducah Tilghman High
School, Paducah
- April 10 (7:00 P.M.) — Owensboro High School,
Owensboro
- April 11 (7:00 P.M.) — Elizabethtown High
School, Elizabethtown

Attention Basketball Coaches

Kellogg's of Battle Creek announces the First
Coach of the Year Basketball Clinic to be held in
Louisville, Kentucky, April 25, 26, 27, at the Exec-
utive West Hotel. Clinic manager is Earl Brown-
ing, Athletic Director of Westport High School,
Louisville, Kentucky.

GYMNASTICS RESULTS

The Marion County High School, Lebanon,
was the site for the Gymnastics competition held
on February 22, 1975. Vivan McKibben and Jim
Nance managed the girls and boys tournaments
respectively. The results are as follows:

Boys

Team Finish: Tates Creek, 286.55; Henry Clay,
245.15.

Floor Exercise: Wilkins, Tates Creek, 18.2;
Adams, Thomas Jefferson, 17.65; Scott Wilce, Tates
Creek, 17.45; Billy Blount, Tates Creek, 15.85; Jay
Gilbert, 14.95.

Side Horse: Adams, Thomas Jefferson, 18.5;
Gilbert, Butler, 14.55; S. Wilce, Tates Creek, 14.55;
T. Hockenberry, Seneca 14.45; K. Wilkins, Tates
Creek, 14.4.

Still Rings: K. Wilkins, Tates Creek, 17.6; R.
Adams, Thomas Jefferson, 16.85; T. Stone, Henry
Clay, 14.95; S. Wilce, Tates Creek, 14.84; B. Blount,
Tates Creek, 14.65.

Vaulting: K. Wilkins, Tates Creek, 18.7; R.
Adams, Thomas Jefferson, 18.3; S. Wilce, Tates
Creek, 17.3; T. Stone, Henry Clay, 17.2; B. Blount,
Tates Creek, 16.6.

Parallel Bars: R. Adams, Thomas Jefferson,
19.1; S. Wilce, Tates Creek, 18.55; K. Wilkins,
Tates Creek, 17.25

High Bar: Wilkins, Tates Creek, 16.5; Adams,
Thomas Jefferson, 14.65; Blount, Tates Creek,
14.25; J. Stone, Henry Clay, 14.1; Wilce, Tates
Creek, 13.7; W. Stone, Henry Clay, 12.45.

All Around: Adams, Thomas Jefferson, 105.05;
Wilkins, Tates Creek, 101.48; Wilce, Tates Creek,
96.4; J. Stone, Henry Clay, 89.4; Blount, Tates
Creek, 89.3; Gilbert, Butler, 83.35.

Girls

Team Finish: Henry Clay, 200.3; Moore, 198.5;
Tates Creek, 177.44; Southern, 146.55.

Vaulting: Libby Goff, Moore, 17.55; Lee
Floyd, Tates Creek, 17.0; Kathy Flannery, Lafay-
ette, 16.55; Nora Geoghegan, Henry Clay, 16.5.

Balance Beam: L. Gogg, Moore, 17.35; Kay Polites, Henry Clay, 17.3; Rhonda Wilkerson, Paris, 17.15; Marti Sallee, Moore, 16.75; Lee Floyd, Tates Creek, 16.65.

Uneven Bars: R. Wilkerson, Paris, 18.05; K. Polites and N. Geoghegan, Henry Clay, 17.65; L. Goff, Moore, 17.6; L. Floyd, Tates Creek, 17.4.

Floor Exercise: K. Flannery, Lafayette, 17.25; B. Young, Doss, 17.1; R. Wilkerson and L. Mumford, Moore, 16.9; L. Floyd, Doss, 16.75.

All-Around: L. Goff, Moore, 69.25; R. Wilkerson, Paris, 68.4; L. Floyd, Tates Creek, 67.8; K. Polites, Henry Clay, 67.75; N. Geoghegan, Henry Clay, 66.9.

BASEBALL

Ft. Campbell Region

Hopkinsville District — Christian County, Fort Campbell, Hopkinsville, Trigg County

Murray District — Calloway County, Marshall County, Murray

Heath District — Lone Oak, Paducah Tilghman, Reidland, St. Mary, Heath

Mayfield District — Cuba, Farmington, Lowes, Mayfield, Wingo

Caldwell County District — Caldwell County, Crittenden County, Livingston Central, Lyon County

Carlisle County District — Ballard Memorial, Carlisle County, Fulton County, Hickman County

Madisonville Region

Henderson District — Henderson, Henderson County, Providence, Union County, Webster County

Madisonville District — Dawson Springs, Earlington, McLean County, Madisonville-North Hopkins, West Hopkins

Grayson County District — Butler County, Edmonson County, Grayson County

Owensboro District — Apollo, Daviess County, Owensboro, Owensboro Catholic

Central City District — Bremen, Central City, Drakesboro, Graham, Greenville, Hughes-Kirk, Muhlenberg Central

Ohio County District — Breckinridge County, Fordsville, Frederick Fraize, Hancock County, Ohio County, St. Romuald

Elizabethtown Region

Bowling Green District — Bowling Green, Franklin-Simpson, Warren Central, Warren East

Auburn District — Adairville, Auburn, Chandlers Chapel, Lewisburg, Olmstead, Russellville, Todd County Central

Glasgow District — Allen County, Barren County, Glasgow

Cumberland County District — Clinton County, Cumberland County, Gamaliel, Metcalfe County, Tompkinsville

Green County District — Caverna, Green County, LaRue County

Elizabethtown District — East Hardin, Elizabethtown, Fort Knox, Meade County, North Hardin, West Hardin

Taylor County District — Adair County, Campbellsville, Marion County, Taylor County

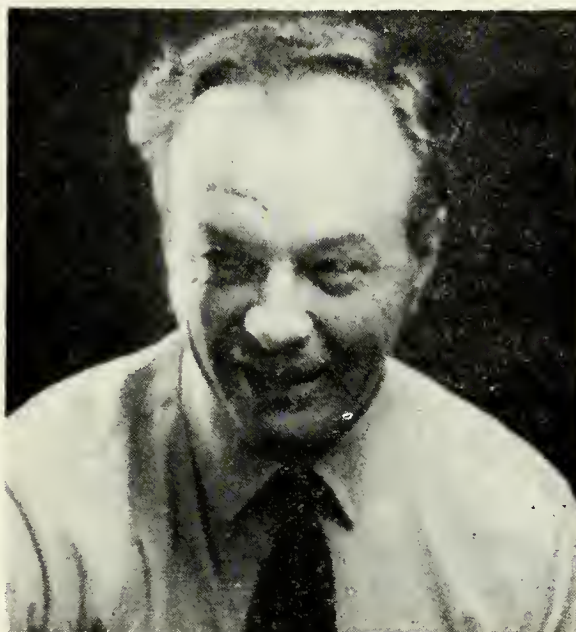
Bullitt Central District — Bardstown, Bethlehem, Bullitt Central, Nelson County, Washington County

Jefferson County Region

Pleasure Ridge Park District — Bishop David, Butler, Pleasure Ridge Park, Western

Thomas Jefferson District — DeSales, Iroquois, Southern, Thomas Jefferson

In Memoriam



Ed Cleavenger

Ed Cleavenger of Sturgis, Kentucky died of a heart attack on January 12, 1975. Ed was born in Clarksburg, West Virginia. He was a graduate of West Virginia State and coached for a brief time at St. Augustine High School in Grafton, West Virginia. Ed was working with the Breckinridge Job Corp Center in Morganfield at the time of his death.

Ed was an outstanding official who had spent twenty-seven years officiating basketball and twenty-five years officiating football in West Virginia and Kentucky.

He is survived by his wife, Eleanor, a daughter, Kathy Andre of Utah, and a son, Bill, who is a student at Murray State University.

Durrett District — Durrett, Fern Creek, Mari-on C. Moore

Portland Christian District — Central, Port-land Christian, Shawnee

St. Xavier District — Ahrens, duPont Man-ual, Male, St. Xavier

Westport District — Ballard, Eastern, Wag-gener, Westport

Valley District — Doss, Fairdale, Beth Haven, Jesse Stuart, Valley

Atherton District — Atherton, Kentucky Country Day, Seneca, Trinity

Lexington Region

Franklin County District — Frankfort, Frank-lin County, Georgetown, Scott County

Harrison County District — Bourbon County, Harrison County, Nicholas County, Paris

Lexington District — Bryan Station, Henry Clay, Lafayette, Sayre, Tates Creek

Boyle County District — Boyle County, Dan-ville, Garrard County, Jessamine County

Oldham County District — Oldham County, Shelby County, Shelbyville, Taylorsville

Estill County District — Berea, Estill County, Madison, Madison Central, Model

Lexington Catholic District — Anderson

County, Harrodsburg, Lexington Catholic, Mercer County, Woodford County

Russell County District — Casey County, Lincoln County, Russell County

Laurel County Region

Somerset District — Eubank, Nancy, Pulaski County, Somerset

Monticello District — McCreary County, Monticello, Pine Knot, Wayne County

Jenkins District — Breathitt County, Fleming-Neon, Jenkins, Knott County, Letcher County, Riverside Christian, Whitesburg

M. C. Napier District—Buckhorn, Combs Memorial, Hazard, Leslie County, M.C. Napier

Laurel County District — Clay County, Jackson County, Laurel County, Oneida Institute, Rockcastle County

Cawood District — Cawood, Cumberland, Everts, Harlan, Lynch

Lee County District — Hazel Green Academy, Lee County, Owsely County, Powell County, Wolfe County

Middlesboro District — Barbourville, Bell County, Corbin, Henderson Settlement, Lone Jack, Middlesboro, Pineville, Whitley County

Newport Region

Boone County District — Boone County, Conner, Dixie Heights, Lloyd Memorial, St. Henry, Simon Kenton

Newport District — Bellevue, Dayton, Newport, Newport Catholic

Owen County District — Carroll County, Eminence, Gallatin County, Henry County, Owen County, Trimble County

Grant County District — Grant County, Pendleton County, Walton-Verona, Williamstown

Silver Grove District — Bishop Brossart, Campbell County, Highlands, St. Thomas, Silver Grove

Ludlow District — Beechwood, Covington Catholic, Holmes, Holy Cross, Ludlow

Lewis County District — Augusta, Deming, Fleming County, Lewis County, Mason County, Maysville, St. Patrick, Tollesboro

Johnson Central Region

Paul Blazer District — Boyd County, Catlettsburg, Fairview, Holy Family, Louisa, Paul G. Blazer

Russell District — Greenup County, Raceland, Russell

Bath County District — Bath County, George R. Clark, Menifee County, Mt. Sterling, Montgomery County

Johns Creek District — Belfry, Elkhorn City, Feds Creek, Johns Creek, Phelps

University Breckinridge District — East Carter, Rowan County, University Breckinridge, West Carter

Johnson Central District — Johnson Central, Morgan County, Paintsville, Salyersville

McDowell District — Allen Central, Betsy Layne, McDowell, Prestonsburg, Wheelwright

Virgie District — Dorton, Millard, Mullins, Pikeville, Virgie

GOLF FOR GIRLS

Princeton Region — Ballard Memorial, Caldwell County, Central City, Christian County, Greenville, Henderson County, Madisonville-N. Hopkins, Marshall County, Murray, Ohio County, Owensboro, St. Mary

Bowling Green Region — Allen County, Barren County, Bowling Green, Clinton County, Gamaliel, Glasgow, Hart County, Metcalfe County, Tompkinsville

Louisville Region — Ahrens Vocational, Ballard, Bullitt Central, Doss, Eastern, Fairdale, Kentucky Country Day, Sacred Heart, Southern Waggener, Westport

Marion County Region — Adair County, Bardstown, Bethlehem, Boyle County, Breckinridge County, Campbellsville, Danville, Elizabethtown, Green County, Marion County, Meade County, Nelson County, North Hardin, Taylor County, Washington County

Carroll County Region — Campbell County, Carroll County, Connor, Dixie Heights, Gallatin County, Grant County, Holy Cross, Lloyd Memorial, Oldham County, Owen County, Villa Madonna

Shelbyville Region — Bryan Station, Frankfort, Franklin County, George R. Clark, Henry Clay, Henry County, Lafayette, Shelbyville, Bates Creek, Woodford County

Corbin Region — Corbin, Estill County, Garrard County, Harlan, James A. Cawood, Jenkins, Laurel County, Lincoln County, Lynch, Madison Central, Middlesboro, Model, Pineville

Maysville Region — Allen Central, Fleming County, Harrison County, Johnson Central, Mason County, Maysville, Montgomery County, Mt. Sterling, Nicholas County, Paintsville, Paul G. Blazer, Prestonsburg, St. Patrick

GOLF FOR BOYS

Mayfield Region — Ballard Memorial, Caldwell County, Calloway County, Christian County, Ft. Campbell, Fulton, Hickman County, Hopkinsville, Lone Oak, Marshall County, Mayfield, Murray, Paducah Tilghman, St. Mary

Owensboro Region — Apollo, Breckinridge County, Central City, Daviess County, Greenville Hancock County, Henderson, Henderson County Madisonville-N. Hopkins, Ohio County, Owensboro, Owensboro Catholic, Providence, Union County, Webster County

Park City Region — Allen County, Barren County, Bowling Green, Caverna, Clinton County, East Hardin, Edmonson County, Elizabethtown, Ft. Knox, Franklin-Simpson, Gamaliel, Glasgow, Hart County, LaRue County, Metcalfe County, North Hardin, Russellville, Tompkinsville

West Jefferson Region — Ahrens Vocational, Beth Haven Christian, Bishop David, Butler, DeSales, Doss, Fairdale, Iroquois, Marion C. Moore, Pleasure Ridge Park, Southern, Stuart, Thomas Jefferson, Valley, Western

East Jefferson Region — Atherton, Ballard, Bullitt Central, duPont Manual, Durrett, Eastern, Fern Creek, Jeffersontown, Kentucky Country Day, Male, St. Xavier, Seneca, Trinity, Waggener, Westport

Covington Region — Beechwood, Boone County, Carroll County, Conner, Covington Catholic, Covington Latin, Dixie Heights, Gallatin County, Holmes, Holy Cross, Lloyd Memorial, Ludlow, Owen County, St. Henry, Simon Kenton, Trimble County, Walton-Verona

Campbell County Region — Bellevue, Bishop Brossart, Campbell County, Crittenden County, Fleming County, Georgetown, Grant County, Harrison County, Highlands, Lewis County, Mason County, Maysville, Newport, Newport Catholic, Pendleton County, St. Patrick, St. Thomas, Scott County, Silver Grove, Williamstown

Frankfort Region — Bourbon County, Bryan Station, Frankfort, Franklin County, George R. Clark, Henry Clay, Henry County, Lafayette, Lexington Catholic, Montgomery County, Mt. Sterling, Nicholas County, Oldham County, Paris, Powell County, Sayre, Shelby County, Shelbyville, Tates Creek, Woodford County

Lebanon Region — Adair County, Anderson County, Bardstown, Bethlehem, Boyle County, Burgin, Campbellsville, Casey County, Danville, Garrard County, Green County, Harrodsburg, Jessamine County, Lincoln County, Marion County, Mercer County, Nelson County, Russell County, Taylor County, Washington County

London Region — Berea Community, Corbin, Cumberland, Estill County, Harlan, James A. Cawood, Knox Central, Laurel County, Lee County, Lynch, McCreary County, Madison Central, Middlesboro, Model, Monticello, Pineville, Somerset

Paintsville Region — Allen Central, Belfry, Boyd County, Elkhorn City, Fairview, Greenup County, Hazard, Holy Family, Jenkins, Johnson Central, Morgan County, Mullins, Paintsville, Paul G. Blazer, Pikeville, Prestonsburg, Raceland, Russell, University Breckinridge

RIFLE MARKSMANSHIP

Bourbon County, Central, Fern Creek, Fort Knox, Greenup County, Hopkinsville, Jefferson-town, Johnson Central, Lafayette, Male, Marion County, M. M. I., Newport, Oldham County, Owensboro, Paul G. Blazer, Seneca, Stuart, Thomas Jefferson, Valley, Waggener, Western Anderson.

TENNIS FOR GIRLS

Murray Region — Christian County, Fort Campbell, Henderson, Henderson County, Hopkinsville, Lone Oak, Madisonville-North Hopkins, Mayfield, Marshall County, Murray, Paducah Tilghman, St. Mary

Glasgow Region — Adair County, Auburn, Bowling Green, Campbellsville, Caverna, Franklin-Simpson, Glasgow, Green County, Hart County, Lewisburg, Metcalfe County, Olmstead, Russellville, Tompkinsville

Elizabethtown Region — Apollo, Bardstown, Breckinridge County, Butler County, Daviess County, Elizabethtown, Fort Knox, Frederick-Fraze, Greenville, LaRue County, Marion County, Meade County, Nelson County, North Hardin, Owensboro, Shelbyville, Shelby County, Taylor County

East Jefferson Region — Ahrens, Assumption, Atherton, Ballard, Durrett, Eastern, Fern Creek, Jeffersontown, Louisville Collegiate, Male, Marion C. Moore, Mercy Academy, Sacred Heart, Seneca, Waggener, Westport

West Jefferson Region — Angela Merici, Butler, Central, Doss, Fairdale, Holy Rosary, Kentucky Country Day, Pleasure Ridge Park, Presentation Academy, Shawnee, Southern, Stuart, Thomas Jefferson, Western

Ft. Thomas Region — Beechwood, Bellevue, Boone County, Campbell County, Carroll County, Conner, Gallatin County, Henry County, Highlands, Holy Cross, LaSalette, Lloyd Memorial, Newport, Notre Dame, Oldham County, Our Lady of Providence, St. Henry, Villa Madonna

Lexington Region — Anderson County, Bourbon County, Bryan Station, Frankfort, Franklin County, Georgetown, Henry Clay, Lafayette, Lexington Catholic, Mason County, Paris, Sayre, Tates Creek, Woodford County

Richmond Region — Boyle County, Danville, George R. Clark, Harrodsburg, James A. Cawood, Laurel County, Madison, Madison Central, Middlesboro, Model, Nicholas County, Oneida Institute, Pineville, Somerset

Ashland Region — Boyd County, Fairview, Johnson Central, McDowell, Montgomery County, Mt. Sterling, Paul G. Blazer, Russell, University Breckinridge

TENNIS FOR BOYS

Murray Region — Caldwell County, Christian County, Ft. Campbell, Henderson, Henderson County, Hopkinsville, Lone Oak, Madisonville-North Hopkins, Marshall County, Mayfield, Murray, Paducah Tilghman, St. Mary

Glasgow Region — Adair County, Auburn, Bowling Green, Campbellsville, Caverna, Edmonson County, Franklin-Simpson, Glasgow, Green County, Hart County, Lewisburg, Metcalfe County, Olmstead, Russellville, Taylor County, Tompkinsville

Elizabethtown Region — Apollo, Bardstown, Breckinridge County, Butler County, Daviess County, Elizabethtown, Fort Knox, Greenville, LaRue County, Marion County, Meade County, Nelson County, North Hardin, Owensboro, Owensboro Catholic, Shelby County, Shelbyville

West Jefferson Region — Bishop David, Butler, Central, DeSales, Doss, Fairdale, Iroquois, Pleasure Ridge Park, Southern, Stuart, Thomas Jefferson, Valley, Western

East Jefferson Region — Ahrens, Atherton, Ballard, Durrett, duPont Manual, Eastern, Fern Creek, Jeffersontown, Kentucky Country Day, Male, Moore, Seneca, St. Xavier, Trinity, Waggener, Westport

Ft. Thomas Region — Beechwood, Bellevue, Boone County, Campbell County, Carroll County, Conner, Covington Catholic, Covington Latin, Gallatin County, Henry County, Highlands, Holmes, Holy Cross, Lloyd, Newport, Newport Catholic, Oldham County, St. Henry

Lexington Region — Anderson County, Bourbon County, Bryan Station, Frankfort, Franklin County, Georgetown, Henry Clay, Lafayette, Lexington Catholic, Mason County, Millersburg Military Institute, Paris, Sayre, Tates Creek, Woodford County

Richmond Region — Boyle County, Danville, George R. Clark, Harrodsburg, Hazard, James A. Cawood, Laurel County, Madison, Madison Central, Middlesboro, Model, Nicholas County, Oneida Institute, Pineville, Somerset

Ashland Region — Boyd County, Fairview, Johnson Central, McDowell, Montgomery County, Mt. Sterling, Paul G. Blazer, Prestonsburg, Russell, University Breckinridge

ATTENTION TRACK COACHES

The Board of Control now requires that an individual or a relay team must have competed in at least four meets during the regular season to be eligible to participate in the regional track meet.

Only the following events shall constitute regional meets: (Boys) 120 yard hurdles, 100 Yard Dash, 180 Yard Hurdles, Two-Mile Run, 880 Yard Run, 220 Yard Dash, One-Mile Run, Half-Mile Relay, 440 Yard Dash, Mile Relay, Shot, Pole Vault, Discus, High Jump, Running Long Jump, Triple Jump; (Girls) 60 Yard Hurdles, 880 Yard Run, 440 Yard Run, 100 Yard Dash, Mile Relay, 220 Yard Dash, 110 Yard Hurdle, 440 Yard Relay, 880 Medley Relay, 880 Yard Relay, One Mile Run, High Jump, Shot, Long Jump and Discus

Track regulations adopted by the Board of Control provide that the state shall be divided into classes and regions by the Commissioner who will assign the schools to the regional sites. If you plan to have a team and your school is not listed below please contact the K.H.S.A.A. for assignment to a region. The 1975 assignments are as follows:

TRACK — CLASS A BOYS

Fort Campbell Region — Ballard Memorial, Carlisle County, Crittenden County, Dawson Springs, Ft. Campbell, Fulton, Heath, Hickman County, Hughes Kirk, Murray, Providence, South Hopkins, St. Mary, Trigg County, Webster County

Glasgow Region — Allen County, Bremen, Butler County, Edmonson County, Frederick Fraize, Gamaliel, Hancock County, Hart County, Lewisburg, McLean County, Russell County, Russell County, Russellville, Todd County Central, Tompkinsville

Greensburg Region — Bardstown, Bethlehem, Campbellsville, Caverna, Clinton County, Cumberland County, Green County, Kentucky Country Day, Kentucky School for the Blind, Metcalfe County, Portland Christian, Washington County, West Hardin

Newport Region — Augusta, Bellevue, Bishop Brossart, Carroll County, Covington Latin, Dayton, Eminence, Gallatin County, Grant County, Henry County, Ludlow, Owen County, Pendleton County, St. Henry, Trimble County

Lexington Region — Burgin, Frankfort, Georgetown, Harrodsburg, Lexington Catholic, Maysville, Mercer County, Paris, Sayre, Shelbyville

Richmond Region — Berea, Boyle County, Eubank, Hazel Green, Jackson, Jackson County, Ky. School f/t Deaf, Lee County, Madison, Menifee County, Model, Monticello, Mt. Sterling, Nancy, Nicholas County, Somerset, Wolfe County

Barbourville Region — Bell County, Combs Memorial, Corbin, Cumberland, Evarts, Fleming-Neon, Harlan, Hazard, Jenkins, Lone Jack, Lynch, Lynn Camp, M. C. Napier, Oneida Institute, Pineville, St. Camillus, Riverside Christian, Williamsburg

Morehead Region — Allen Central, Bath County, Betsy Layne, Elkhorn City, Elliott County, Fairview, Fleming County, Holy Family, Johns Creek, Lewis County, Millard, Morgan County, Mullins, Pikeville, Raceland, Rowan County, University Breckinridge Training, Virgie, West Carter, Wheelwright

TRACK — CLASS AA BOYS

Paducah Region — Calloway County, Christian County, Hopkinsville, Lone Oak, Marshall

County, Mayfield, Paducah Tilghman, Reidland Henderson County Region — Apollo, Daviess County, Henderson, Henderson County, Madisonville-North Hopkins, Ohio County, Owensboro, Owensboro Catholic, Union County

Glasgow Region — Adair County, Barren County, Bowling Green, Franklin-Simpson, Glasgow, LaRue County, Taylor County, Warren Central, Warren East

Bullitt Central Region — Breckinridge County, Bullitt Central, East Hardin, Elizabethtown, Ft. Knox, Grayson County, Marion County, Meade County, Nelson County, North Hardin, Oldham County, Shelby County

Newport Region — Boone County, Campbell County, Conner, Covington Catholic, Covington Holmes, Dixie Heights, Highlands, Lloyd Memorial, Newport, Newport Catholic, Simon Kenton

Lexington Region — Bourbon County, Bryan Station, Franklin County, Harrison County, Henry Clay, Jessamine County, Lafayette, Scott County, Tates Creek, Woodford County

Richmond Region — Casey County, Clark County, Clay County, Danville, James A. Cawood, Knott County Central, Knox Central, Laurel County, Lincoln County, Madison Central, Middlesboro, Pulaski County, Whitesburg, Whitley County

Morehead Region — Belfry, Boyd County, East Carter, Greenup County, Johnson Central, Mason County, Montgomery County, Paul G. Blazer, Prestonsburg, Russell

TRACK — CLASS AA GIRLS

Paducah Region — Calloway County, Christian County, Hopkinsville, Lone Oak, Marshall County, Mayfield, Paducah Tilghman, Reidland

Henderson County Region — Apollo, Daviess County, Henderson County, Madisonville-North Hopkins, Ohio County, Owensboro, Owensboro Catholic, Union County

Glasgow Region — Adair County, Barren County, Bowling Green, Franklin-Simpson, Glasgow, LaRue County, Taylor County, Warren Central

Bullitt Central Region — Breckinridge County, Bullitt Central, East Hardin, Elizabethtown, Ft. Knox, Marion County, Meade County, Nelson County, North Hardin, Oldham County, Shelby County

Newport Region — Boone County, Campbell County, Conner, Covington Holmes, Dixie Heights, Highlands, Lloyd Memorial, Newport, Notre Dame, Simon Kenton

Lexington Region — Bourbon County, Bryan Station, Franklin County, Harrison County Henry Clay, Jessamine County, Lafayette, Scott County, Tates Creek, Woodford County

Richmond Region — Clark County, Danville, Knott County Central, Knox Central, Laurel County, Lincoln County, Madison Central, Middlesboro, Pulaski County, Whitesburg, Whitley County

Morehead Region — Belfry, Boyd County, East Carter, Greenup County, Johnson Central, Mason County, Montgomery County, Paul G. Blazer, Prestonsburg, Russell

TRACK — CLASS A GIRLS

Ft. Campbell Region — Ballard Memorial, Carlisle County, Crittenden County, Dawson Springs, Earlington, Ft. Campbell, Heath, Hickman County, Hughes Kirk, Murray, Providence, South Hopkins, St. Mary, Trigg County, Webster County

**INDIVIDUAL CHAMPIONSHIP WINNERS
STATE WRESTLING TOURNAMENT**



(Left to Right) Front Row: 98-Ricky Morse, North Hardin; 105-Mark Wahle, St. Xavier; 112-Tommy Kurtz, Fern Creek; 119-Rick Barker, Newport Catholic; 126-Phillip McCamish, North Hardin; 132-Bob Chrosniak, Ballard. Second Row: 138-Marc Hennessy, Newport Catholic; 145-Jim Porter, Campbell County; 155-Steve Olson (Most Outstanding Wrestler), Ballard; 167-Bruce Boggs, Woodford County; 185-Eddie Thomas, Fern Creek; Heavyweight-Kelly Kirchbaum, North Hardin.

Glasgow Region — Butler County, Edmonson County, Frederick Fraize, Gamaliel, Hancock County, Hart County, Lewisburg, McLean County, Olmstead, Russell County, Russellville, Todd County Central, Tompkinsville

Greensburg Region — Bardstown, Bethlehem, Campbellsville, Caverna, Clinton County, Green County, Kentucky Country Day, Kentucky School for the Blind, Metcalfe County, Washington County, West Hardin

Newport Region — Augusta, Bellevue, Bishop Brossart, Carroll County, Dayton, Eminence, Grant County, Henry County, LaSalette, Ludlow, Owen County, Pendleton County, St. Henry, Villa Madonna

Lexington Region — Burgin, Frankfort, Georgetown, Harrodsburg, Lexington Catholic, Maysville, Mercer County, Paris, Sayre, Shelbyville, St. Patrick

Richmond Region — Berea, Boyle County, Hazel Green, Kentucky School for the Deaf, Lee County, Madison, Menifee County, Model, Mt. Sterling, Nicholas County, Somerset, Wolfe County

Barbourville Region — Corbin, Evarts, Fleming-Neon, Harlan, Hazard, Jenkins, Lynn Camp, M. C. Napier, Oneida Institute, Pineville, Riverside Christian, St. Camillus, Williamsburg

Morehead Region — Allen Central, Bath County, Elkhorn City, Elliott County, Fairview,

Fleming County, Holy Family, Lewis County, Morgan County, Mullins, Paintsville, Pikeville, Raceland, Rowan County, University Breckinridge Training, Virgie, West Carter

TRACK — CLASS AAA GIRLS

Male Region — Angela Merici, Butler, Central, duPont Manual, Male, Shawnee

St. Xavier Region — Atherton, Durrett, Holy Rosary, Moore, Sacred Heart, Southern, Thomas Jefferson

Stuart Region—Beth Haven, Doss, Fairdale, Iroquois, Stuart, Valley, Western, Pleasure Ridge Park

Ballard Region — Assumption, Ballard, Eastern, Fern Creek, Jeffersonstown, Mercy Academy, Seneca, Waggener, Westport

TRACK — CLASS AAA BOYS

Male Region — Butler, Central, duPont Manual, Male, Shawnee

Atherton Region — Atherton, DeSales, Durrett, Moore, St. Xavier, Southern, Thomas Jefferson

Stuart Region — Beth Haven, Bishop David, Doss, Stuart, Valley, Western, Pleasure Ridge Park, Fairdale, Iroquois

Ballard Region — Ballard, Eastern, Fern Creek, Jeffersonstown, Seneca, Trinity, Waggener, Westport

State Wrestling Team Results

The Atherton High School, Louisville, was the site for the State Wrestling Tournament held on February 14-15. Mr. Orville Williams of the Seneca High School was manager and Mr. Gene Minton of the Atherton High School was assistant manager of the tournament. The team results are as follows:

1. Fern Creek 65, 2. North Hardin 46, 3. Newport Catholic 41, 4. Ballard 39, 5. Trinity 35, 6. Union County 31, 7. Campbell County 30, 8. Woodford County 28, 9. St. Xavier 24, 10. Danville 20, 11. Frankfort 17, 12. Doss, 16, 13. Waggener 14, 14. Eastern, Westport 13, 16. Pleasure Ridge Park 12, 17. Belfry 11, 18. Caldwell County 11, 19. Simon Kenton 10, 20. Durrett 9, 21. Lafayette 8½, 22. Hopkinsville 7, 23. Bryan Station, Henderson County 6, 25. Seneca 3½, 26. Paducah Tilghman 2½, 27. Boone County, Franklin-Simpson, Jeffersontown, Newport, Oldham County 2, 32. Bowling Green, Kentucky School for the Blind, West Hardin 1.

SUPPLEMENTARY LIST OF REGISTERED BASKETBALL OFFICIALS

(List Compiled February 26)

If the telephone number is given for an official, it is the home phone unless otherwise designated. If two numbers are given the first number is the home phone.

Coryell, Frank, 306 Ky. Home Life Bldg., Louisville 40202, 363-9774, 589-4226
McGlothlin, Leonard, 1237 Gilbert Lane, Owensboro 42301, 683-5242, 684-6211

KAPOS NEWS STATE TOURNAMENT INFORMATION

Cheerleader and Sponsor Registration: All cheerleading squads and/or sponsors are asked to stop by the KAPOS table in Freedom Hall to:

1. Register your squad
2. Pick up important information and materials for your and your school

Along with a KAPOS board member, there will be high school cheerleaders on hand to assist you. They can be identified by their hostess armbands. Feel free to ask them for help, and in turn they may seek you and your cheerleaders to be interviewed by one of the radio commentators. In order to make their task easier, we are asking that you register your seat, row and section number. A possible radio interview is often missed because the guides could not locate the desired person in time for the interview.

Hospitality Room: May we remind all sponsors and cheerleaders that KAPOS has a Hospitality Room, located in Freedom Hall. We cordially invite you to have refreshments, socialize with friends, exchange ideas, and perhaps get help with your problems.

"Sweet Sixteen" Cheerleading Squads: Attention Principals! If your team will be participating in the State Tournament, included in the packet sent to you by the KHSAA will be a letter pertaining to your cheerleading squad. Be sure to look for this and relay all information to your cheerleader sponsor. We request that your cheerleaders be chaperoned by a well qualified, school approved adult. Verification of this, along with

your sponsor's name, must be contained in the letter of confirmation which you will receive. This letter must be in the hands of a KAPOS officer prior to the time that your cheerleaders take the floor.

State Tournament Cheerleading Champions: Important! Please be sure that your school is a paid up member of KAPOS in order for your squad to compete for the top cheerleading award in the State Tournament. The winner of this award will be determined by use of the KAPOS Judging Sheet, a copy of which will also be included in the packet sent by the KHSAA to the winners of the sixteen regions.

STATE-AT-LARGE CHAMPIONS

Beginning at the District Tournament games, all squads that are KAPOS members are eligible to be judged for the honor of representing their district in the KAPOS Region-at-Large cheerleading competition. The winner and runner-up of each district will progress to the region. In turn, the winning squad from each region is allowed to compete for the title of State-at-Large Cheerleading Champions.

Judging for the State-at-Large winners will take place at 8:30 A.M. on Friday, in the Atherton High School Gymnasium, 3000 Dundee Road, Louisville. The public is invited to this outstanding event. The admission charge of \$1.00 per person will go toward the expenses of the KAPOS scholarship award, details of which are supplied below. We are grateful to the administrators of Atherton for their generosity in opening the doors of their school to us for this competitive event. We trust that they will have no cause to fault our behavior. All cheerleaders and guests will be expected to be remindful that they are guests in the "home" of Atherton High School.

At the conclusion of the judging at Atherton, the top four squads will be announced; however, the order of finish will not be announced until the trophy presentation as indicated in the following section.

AWARDING OF TROPHIES

KAPOS is pleased to honor outstanding cheerleading squads with the recognition they so well deserve. All cheerleader awards will be presented between games on Friday night of the State Tournament. The awards are as follows:

State Tournament: The winning and runner-up cheerleading squads will receive trophies, with the third and fourth place squads being awarded plaques. All tournament cheerleading squads and their sponsors are asked to be located close to the playing floor so that they can easily come to the floor should they be called for an award.

State-at-Large: Recognition is now being given to cheerleading squads other than those sixteen fortunate enough to participate with their teams in the State Tournament. The winner will receive the Ted Sanford trophy, while the runner-up will be awarded the Jane Meyer trophy. Plaques will be given to the third and fourth place squads. The four finalists of the State-at-Large Judging (held Friday morning) are asked to report in uniform, with their sponsors, at the north end of the arena five minutes prior to the conclusion of the first game on Friday night.

It is indeed possible for one squad to be both State Tournament and State-at-Large Champions.

GOVERNOR CARROLL DECLARES GOOD SPORTSMANSHIP WEEK

While every week should be Good Sportsmanship Week, KAPOS has always tried to put special emphasis on being a good sport at State Tournament time. Being a good sport is part of being a good citizen. We don't believe that good citizens need to be reminded to exemplify good sportsmanship. However, it is especially fitting at tournament time to remind all citizens that it is a privilege to be able to attend the games and that each individual can contribute to the success of the tournament if he will abide by the KAPOS Sportsmanship Creed proclaimed by Governor Carroll. The Governor's proclamation is on display at the KAPOS table.

NOTE TO ALL ADMINISTRATORS

Many of you have responded to our SOS in releasing teaching personnel to assist with the many tasks necessary to keep this organization functioning effectively.

Again, we need judges and personnel to help at the tournament. This involves at least 12 to 15 people. It is also backbreaking, tiresome work. However, we have many dedicated women who have indicated a willingness to help share these duties provided they get a release from their administrators. Therefore, the KAPOS board is seeking your understanding and cooperation should you be asked to release a teacher from her duties to help carry on the work that KAPOS is doing to make cheerleading a worthwhile educational experience in the State of Kentucky.

STELLA S. GILB SCHOLARSHIP

KAPOS is happy to annually award the Stella S. Gilb Scholarship to an outstanding and well-deserving cheerleader from Kentucky. One of your cheerleaders may be a potential scholarship winner, so get your applications in early. Applications must be turned in no later than April 15. Write a KAPOS officer for application forms, or pick them up at the State Tournament KAPOS table.

SUMMER CHEERLEADER CLINICS

Clinic I: July 6-10 Clinic II: July 13-17

Each year cheerleader clinics are held on the University of Kentucky campus, with classes geared to all interest and ability levels. Brochures giving details of the clinics can be obtained at the State Tournament KAPOS table or by contacting Mrs. Milly Rodes at Transylvania University, Lexington.

REGISTERED BASEBALL OFFICIALS OF THE K.H.S.A.A. 1974-1975

(List Compiled February 24)

If one telephone number is given for an official listed, it is the home phone unless otherwise designated. If two numbers are given the first number is that of the home phone.

Abell, Richard A., 1325 Nancy Hanks Apt. 5, Lexington 40504, 254-2945, 276-1185
Adams, Jack, 6109 Fern Court, Fern Creek 40291, 239-8123
Adress, Bill, 2039 New Linden Rd., Newport 41071, 581-9832, 771-6970
Ashley, Kenneth, R.R. 1, Box 113, Science Hill 42553, 423-3215, 678-5148
Audas, David C., Box 2, Dunmor 42339, 657-2513, 748-4588

Baldwin, Dennis E., 4605 Myrleek Pl., Valley Station 40272, 935-0667, 448-8210
Bates, James R., Box 584, Whitesburg 41858, 633-7227
Baumann, Wilbur H., 103 Center St., Wilder, Newport 41071, 431-7034, 261-3710
Beach, Frankie, RFD #2, Box 45, Franklin 42134, 586-3431, 586-4451, Ext. 312
Bell, Ronald Keith, 197 Hedgewood Ct., Lexington 40509, 266-0587
Bennett, Tom, Irvine McDowell Pk., Lancaster Ave., Richmond 40475, 623-8753, 623-8753
Bernardini, Bruno, 5018 B Hammond Heights, Ft. Campbell 42223, 798-6874, 798-4214
Blandford, Steven, 120 E. Amherst, Louisville 40214, 368-0302
Blodgett, Mike, 249 E. Reynolds Rd., Apt. 34, Lexington 40503, 272-8753, 277-8703
Bowling, Stuart V., 403 Roland Ave., Owenton 40359, 484-5916
Brause, Dr. Allan R., 1577 Silverglade Ct., Cincinnati, Ohio 45240, 851-8484, 421-5300, Ext. 451
Brewer, Jeffrey, 112 Loch Lomond Dr., Lexington 40503, 272-4350
Brewer, Lloyd, Combs 41729, 436-6672, 436-3155
Bristol, Charles E., 183 Kentucky Circle, Radcliff 40160, 351-4149, 624-1934
Brown, Michael Ray, 244 E. 14th St., Bowling Green 42101, 457-4432, 781-1372
Brown, Robert, Greenville 42345, 338-3038, 338-4011
Brown, Thomas O., 426 Bloomfield Rd., Bardstown 40004, 348-2708, 348-9046
Browning, Charles, 903 W. Indian Trail, Louisville 40213, 964-9830
Bryant, Charles E., 107 Whitney Avenue, Lawrenceburg 40342, 839-6302, 839-3385
Bryant, Thomas O., 3312 Startan Ct., Louisville 40220, 459-2260
Burdette, Wally M., 525 Auburndale Ave., Louisville 40214, 366-5559
Burkeen, Phil, 659 Wakefield Ave., Bowling Green 42101, 842-4182, 842-4182
Burkeen, Tony, 659 Wakefield Ave., Bowling Green 42101, 842-4182, 842-4182
Burks, Jann, 1807 Carolyn Dr., Lexington 40502, 269-3548
Burton, Van M., R.R. 2, Box 208, Jackson 41339, 668-2524
Bushkar, John, 4385 Crownwood Ave., Dayton, Ohio 45415, 890-3368
Butcher, David N., Haggan Hall, Apt. 4, Morehead 40351, 784-8205
Butner, Billy M., Rt. 1, Lancaster 40444, 792-3503, 679-1574
Cambron, John L., 4 Congress Drive Morganfield 42437, 389-3087, 389-2876
Camic, David, Rt. 2, Harrodsburg 40330, 734-3693, 734-7711
Cane, Les, 936 South 1st St., Louisville 40203, 583-6022, 582-2211, Ext. 385
Carl, Parker L., 125 Camden Ave., Versailles 40383, 875-5995, 873-5464
Cash, Woodrow C., Shady Grove Tr. Ct., Rt. 2, Calvert City 42029, 395-7885
Charles, James, 15 Cook Ave., Winchester 40391, 744-5296, 255-7991
Chatfield, Marc, 2287 Griffith St., Ashland 41101, 324-7478
Chatoney, Jack, 825 Briargate, Radcliff 40160, 351-4804, 624-3616
Cheek, Alan, Box 160, Todd Hall, Richmond 40475, 625-4261
Clarke, Noble H., Jr., 2923 Riedling Dr., Louisville 40206, 895-2512, 239-3218
Clemmons, Billy H., Rt. 2, Smith's Grove 42171, 597-3655, 597-3713
Clemmons, Douglas M., Box 236, Edmonton 42129, 432-4393, 432-2481
Collier, Doug, UPO 2324, Morehead 40351, 784-8530, 932-3267
Colvin, James F., Forest Park Rd., Paintsville 41240, 789-3691, 886-2311
Cooper, Willie V., 2206 Madison, Paducah 42001, 443-3107, 444-7251
Cornelison, Michael R., P.O. Box 7, Berea 40403, 986-9568, 986-3371
Cornwell, James, 506 South Main, Franklin 42134, 586-4327, 586-4451
Cox, Clarence "Chuck", 497 Hill-N-Dale Rd., Lexington 40503, 277-5991, 252-5825
Cox, John E., Box 122, Hodgenville 42748, 358-3275, 624-8923
Craft, Terry L., Ohio River Rd., Greenup 41144, 473-7582
Cross, Gordon, 402 S. Ury, Union City, Tennessee 38261, 885-1772
Culp, Leo, 310 Norwood Ave., Satellite Beach, Florida 32937, 443-1083 (Paducah), 773-8391
Cummins, Howard, 319 S. Bayly Ave., Louisville 40206, 895-5483, 893-5524
Cunningham, Bobby R., Box 55, Pikeville 41501, 432-1528
Cunningham, William, 545 A Stryker Village, Ft. Camp-

- bell 42223, 798-3546, 793-7176
 Daniel, Roger T., P.O. Box 15, Paintsville 41240, 789-3372, 886-2311 (Prestonsburg)
 Daniels, James F., 48 Main St., Paintsville 41240, 789-4558, 789-4646
 Daniels, Robert A., Box 2, Van Lear 41265, 789-3931, 886-2311
 Davenport, James E., Sr., 9810 Dawson Mill Rd., Jefferson-town 40299, 239-5667, 452-3448
 Davis, Ralph W., 304 Highland Dr., Radcliff 40160, 351-6168, 624-1716
 Davis, Rudy Ray, 9217 Wendell Way, Jeffersontown 40299, 491-1882, 454-4646
 Day, Jack L., Main St., Central City 42330, 754-4700, 754-2272
 Deaton, Larry Gene, P.O. Box 572, Bowling Green 42101, 843-3211, 842-8144
 Dickerson, Stephen L., 428 Cherry St., Henderson 42420, 827-9702, 826-2365
 Dill, J. Roger, 200 Green Acres, Glasgow 42141, 651-2316, 651-2316
 Divine, Wayne L., 626 Walnut, Central City 42330, 754-2783, 754-4474
 Dorsey, James O., P.O. Box 504, Somerset 42501, 679-2738, 678-5929
 Duerson, Wm. R., Rt. 2, Paint Lick 40461, 925-4071, 925-4072
 Durbin, Roy, 2911 Dale Ann Drive, Louisville 40220, 452-1730, 587-5237
 Dwyer, Jim, 5612 Ailanthus Tr., Louisville 40219, 964-0426, 452-3629
 Dwyer, Robert H., 1417 Falcon Drive, Louisville 40213, 637-7909, 778-5321
 Dyehouse, James F., Jr., 235 Dantzler Ct., Lexington 40503, 278-1620, 253-0621
 Ebel, Jack, Davis Hall, Transylvania Univ., Lexington 40508, 233-8330
 Edmonson, Johnny B., R.R. 1, Glencoe 41046, 643-5288
 Elliott, Billy A., 313 Cedar Lane, Somerset 42501, 679-2921, 679-6371
 Fallis, George F., 269 Lake Street, Ludlow 41016, 581-9769, 261-8211
 Farrell, Joseph, 11 Floral Ct., Ft. Thomas 41075, 441-7812, 941-4930
 Forker, Maurice, Box 384, Sebree 42455, 835-7713, 835-7891
 Foust, Ray, Jr. Box 677, Calvert City 42029, 395-4901, 395-4154, Ext. 324
 Frankel, Louis S., 3723 Stanton Blvd., Louisville 40220, 452-6519, 452-6519
 Froebel, Marty, 5553 A Folger, Ft. Knox 40121, 624-8460, 624-3247
 Frymire, L. H., 101 Spring Street, Irvington 40146, 547-2553, 547-3951
 Gabriel, Richard H., 4316 Wingate Rd., Louisville 40207, 266-3945, 895-1903
 Gardner, Larry, Rt. 4, Box 159, Fulton 42041, 838-6604, 838-6604
 Gibbons, Mike, 207 W. 12th, Apt. 7, Lexington 40505, 254-2592, 255-0712
 Gibson, Gary, 914 Denmark, Louisville 40215, 366-0445
 Gibson, Junior L., Clarkson 42726, 242-3551, 242-3611
 Goad, Dale B., Gamaliel 42140, 457-2201
 Goetz, Herbert, 35 Linet Ave., Highland Heights 41076, 441-2825
 Goodman, Bennie Ray, Rt. 2, Box 294, Cecilia 42724, 862-4638, 862-3924
 Graven, Gary, 3223 Pomeroy Dr., Louisville 40220, 491-6569
 Green, Donald, P.O. Box 782, Mayfield 42066, 247-6038, 247-6445
 Greer, R. Wayne, 6905 Creston Drive, Pleasure Ridge Park 40258, 935-0642
 Gregory, Roger D., Box 451, Auburn 42206, 542-4686, 542-9955
 Grimes, Herman L., Salem 42078, 988-2193, 388-7562
 Gurren, Steve, 604 Wallace Ave., Covington 41014, 261-4066, 431-1700
 Hall, Greg, 119 Summit Drive, Ft. Mitchell 41017, 341-2306
 Hall, Jay, Box 111, Virgie 41572, 639-2434
 Handley, Woodie, Rt. 2, Hodgenville 42748, 358-3345, 358-3195
 Hardin, Don G., Box 88, Morehead 40351, 784-7698, 845-9871
 Harlow, Stephen J., 3311 Schneiter Ave., Louisville 40215, 366-8274
 Hatfield, David, 1734 Klerner Lane, New Albany, Indiana 47150, 948-0041
 Haynes, Michael D., 3306 Allison Way, Louisville 40220, 456-1749, 366-0371
 Heaberlin, Bill, 928 Washington Ave., Flatwoods 41139, 836-6915, 325-8511, Ext. 253
 Heaberlin, William, Jr., 928 Washington Ave., Flatwoods 41139, 836-6915, 836-6915
 Hensley, Eugene, Jr., Rt. 1, Box 254, Smilax 41764, 279-2148
 Henson, Don R., Rt. 1, Smithland 42081, 928-2047, 988-3263
 Herald, Paul Robin, Quicksand 41363, 666-7117, 666-2805
 Herp, Kenneth R., Jr., 310 Huntington Pk. Dr., Louisville 40213, 969-0510, 581-4450
 Herren, Thomas Kelly, 667 Hill-N-Dale Rd., Lexington 40503, 277-4029, 252-9323
 Herrick, Calvin P., Jr., 200 S. Arnold Ave., Prestonsburg 41653, 886-3494, 886-2311
 Higgins, James P., Sr., 4206 Norene Lane, Louisville 40219, 969-5267, 452-4154
 Hilpp, Louis E., 7509 Devereaux Lane, Louisville 40258, 935-8080
 Holland, Bridges L., Rt. 4, Mayfield 42066, 376-5469
 Horrell, Bennie, 2807 Royal Drive, Owensboro 42301, 684-6431, 683-4616
 Hudson, Douglas, Box 43, Worthville 41098, 732-6423
 Hudson, Mark D., Box 43, Worthville 41098, 732-6423
 Huffman, Glenn, 4109 Plantaganet, Lexington 40504, 254-0917, 254-0917
 Ingraham, Gary, 9706 Lanesboro Way, Louisville 40222, 425-5215, 897-2815
 Jackson, Douglas Moroni, P.O. Box 101, Greenville 42345, 338-3947
 Jarboe, Ronald L., 13906 Lyons Ave., Valley Station 40272, 935-9499
 Johnson, Ned, 117 South 2nd, Bardstown 40004, 348-3534
 Johnson, W. Lynn, P.O. Box 329, Morehead 40351, 784-5393, 845-2551, Ext. 228
 Jones, Donald Lee, 437 Jackson St., Campbellsville 42718, 465-5953, 781-8150
 Jones, Robert, 1312 Kirkwood, Murray 42071, 753-7504, 924-5602
 Joseph, Charles S., 1081 Lincoln Tr. Blvd., Radcliff 40121, 351-6710, 351-6677
 Kaufman, Alvin R., 8215 St. Anthony Ch. Rd., Louisville 40214, 366-0126, 584-8315
 Keeling, Reuben, 1649 Yarbro Lane, Paducah 42001, 442-4190
 Kennedy, James, Rt. 5, 212 Paddock Subdivision, Versailles 40383, 873-7490, 873-5948
 King, James A., 5000 Clarmar Rd., Jeffersontown 40299, 239-8015, 778-2791
 Kirkland, Wade, 103 Bentley Ave., Whitesburg 41858, 633-9553, 633-2246
 Klump, William Roger, 1415 Goddard Ave., Louisville 40204, 451-3632, 584-8123
 Kouns, Perry H., P.O. Box 148, Hitchens 41146, 474-9139, 474-9139
 Kouns, Robert, Box 582, South Shore 41175, 932-4540, 932-3232
 Lacy, James R., Box 432, Campton 41301, 668.3246, 668-3246
 Lamar, Huston O., Box 116, Cloverport 40111, 788-6538
 LaRue, William D., Jr., Salem 42078, 988-3138, 388-7562
 Leneave, Robert E., 205 E. 18th St., Benton 42025, 527-3661, 527-2561
 Logsdon, Michael, 113 Arbor Park North, Louisville 40214, 368-9430, 366-9561, Ext. 453
 Lusk, Michael, 407 N. 3rd St., Bardstown 40004, 348-8228, 348-9046
 McBride, W. Kenneth, 157 St. William Dr., Lexington 40502, 266-7786, 255-6666, Stat. 5
 McClelland, John Michael, 527 Laketower Dr., #60, Lexington 40502, 269-5586, 255-0835
 McClure, Frank E., 3308 Nanz Ave., Louisville 40207, 897-3081, 582-5922
 McCord, Bob, 733 Gentry Lane, Madisonville 42431, 821-0267
 McIntosh, Charles, Rt. 5, Shelbyville 40065, 834-7851
 McMurtrey, Tom, General Delivery, Summer Srade 42166, 428-3541, 748-3849
 Markham, Stan, 1409 Claggett, Bowling Green 42101, 781-2379, 842-1674
 Mariette, Ronald L., 428 Powhatan Trail, Frankfort 40601, 695-4526, 564-3925
 Marshall, Barry J., 4305 Winnepeg Way, Lexington 40503, 272-1619, 272-1619
 Mason, George, 20 Summer Hill, S. Newport 41071, 581-3434, 421-6815
 Matthews, Robert A., Rt. 4, Donna Lane, Bardstown 40004, 348-3439, 348-9096
 Mattingly, Charles 'Pete', 3813 Poplar Level Road, Louisville 40213, 458-2129, 582-3311
 Moberly, Harold F., 612 Worcester Road, Lexington 40503, 278-8656, 252-6773
 Mooneyhan, James H., 810 Henry Street, Franklin 42134, 586-4989, 586-6000
 Moore, Phillip H., Rt. 6, Box 403, Bowling Green 42101, 781-3067, 842-5302
 Moorehead, Alfred K., 146 Grace Court, Apt. 3, Ft. Mitchell 41017, 331-6781, 352-7261
 Morgan, Billy Bruce, Rt. 3, Jackson School Road, Benton 42025, 527-5401
 Morgan, Richard, Rt. 7, Box 78, London 40741, 864-9253, 864-5114

- Morton, William E., 4505 Sunset Avenue, Louisville 40211, 774-1754, 589-4321, Ext. 255
- Mulligan, J. T., 427 Center Street, Erlanger 41018, 341-5628
- Mullins, Arthur, Elkhorn City 41522, 754-4041, 754-5081
- Mullins, Kerry, Box 154-B, Belcher 41513, 754-8567
- Muoio, Raymond A., Rt. 5, Tates Creek Estates, Nicholasville 40356, 272-4629
- Nagel, William E., 33 Retreat Street, Southgate 41075, 441-2231
- Napier, Oramious, Jr., R.R. 1, Box 562, Hazard 41701, 436-2590
- Norwood, Thomas, 811 Henry Street, Franklin 42134, 586-3614, 586-3541
- Oliphant, Sonny, Box 71, Gamaliel 42140, 457-3151, 457-3904
- Orr, Charles M., 4512 Cane Run Road, Louisville 40216, 448-6530
- O'Steen, Edward Lee, Morehead State University, UPO Box 552, Morehead 40351, 784-6724
- Palko, Joseph G., 201 West Main Street, Lynch 40855, 848-2211
- Pardue, Israel L., 1005 So. 28th Street, Louisville 40211, 776-6637, 774-6431
- Parker, Larry Alan, Box N, Russell 41169, 836-8713
- Parkey, Eddie, 105 Edgewood Road, Middlesboro 40965, 248-4139, 248-3378
- Pearl, George W., 3112 Vogue Avenue, Louisville 40220, 452-1288, 582-5521
- Pearson, James G., 15 Terrace Avenue, Crestview 41076, 441-5799, 381-3050
- Pelphrey, Joe D., General Delivery, West Prestonsburg 41668, 886-6265, 886-2475
- Penner, Daniel, 31 Colonial Oaks #3, Louisville 40214, 367-2612
- Penner, Merritt D., Jr., Route 5, Box 392, Manchester 40962, 598-3711
- Pinson, David Lee 'Bo', Rt. 4, Box 566, Pikeville 41501, 437-4639, 456-7716
- Prather, Clinton 'Turk', 212 E. Main Street, LaGrange 40031, 222-1984, 222-1984
- Quisenberry, James M., 1900 Farnsley Road, Apt. 9, Louisville 40216, 448-6152, 366-0940
- Raines, J. W., 1117 Lebanon Road, Danville 40422, 236-3380, 236-6334
- Ramey, Gary G., Route 1, Morehead 40351, 683-2181, 674-6325
- Rhodes, Don, 517½ E. Farren Avenue, Earlington 42410, 383-5292, 821-4780
- Ring, Bill, 481 Rookwood Parkway, Lexington 40505, 299-7089, 255-8492
- Roberts, Harry, 417 Monument Street, Falmouth 41040, 654-5471, 654-3314
- Rogers, Bob, 220 Sherwood Drive, Hopkinsville 42240, 886-7226, 886-4463
- Rogers, Eldridge, 310 Talbert, Hopkinsville 42240, 885-5571, 886-3921
- Rogers, Rufus B., 5571-B Hiers Street, Ft. Knox 40121, 624-1966, 624-8451
- Rowe, Thomas M., 5509 Azalea Lane, Louisville 40258, 937-1267
- Rutledge, Robert A., Box 316 Dupree Hall, Richmond 40475, 275-4758, 625-4340
- Saindon, Lee, 758 Bravington Way, Lexington 40503, 278-5523
- Salyer, Joel Dean, Pettit Avenue, Morehead 40351, 784-6338
- Sandusky, Jerry, Rt. 1, Box 114, Liberty 42539, 787-7742, 787-7484
- Scott, Bill, 1816 McDonald Road, Lexington 40503, 278-2844, 278-9702
- Scott, Walter G., 4789 Clevesdale, Cincinnati, Ohio 45238, 471-5014
- Sefcovic, Harold, 1120 Choctaw Trail, Georgetown 40324, 863-3693, 863-3910
- Shaw, Robert S., 531 Osage Trail, Frankfort 40601, 695-2508, 227-4408
- Simpson, Gary, 593 Bishop Drive, Lexington 40505, 299-5395
- Slone, Mack D., Rt. 1, Box 911C, Pikeville 41501, 432-2797, 437-6361
- Soper, Clyde, Box 111, Millersburg 40348, 484-3487, 293-3969
- Spalding, Charles P., 8107 Jasmine Lane, Louisville 40228, 239-1907
- Stanley, O. A., Box 154B, Belcher 41513, 754-8567
- Stephenson, Harry, 1612 Hawthorne Lane, Lexington 40505, 299-1757, 233-8221
- Stethen, James E., Box 134, Bedford 40006, 255-3285, 265-4717 (Madison, Indiana)
- Stewart, Dale, 514 Catalina Drive, Owensboro 42301, 926-1676, 685-3121
- Stone, Johnny, Route 1, Princeton 42445, 365-5178
- Strain, Richard P., P.O. Box 472, Radcliff 40160, 351-4306, 624-2214
- Stratton, Robert J., Rt. 6, Eastview, Shelbyville 40065, 633-3816, 633-1612
- Straus, William W., 212 Culpepper Drive, Lexington 40502, 266-6347, 252-2275
- Strong, Logan, Haddix 41331
- Styer, Charles, R.R. 1, Box 174, Alexandria 41001, 635-5161, 241-1865
- Sullivan, William H., 111 Evergreen Drive, Lawrenceburg 40342, 839-4177, 839-3061
- Swart, J. D., HHC USARECSTA, Ft. Knox 40121, 351-9158, 624-2619
- Tanaka, Larry T., 2123 North Elm, Henderson 42420, 826-2664, 826-2247
- Taylor, Jim, 53 Roselawn Drive, Independence 41051, 356-2395, 356-3541
- Taylor, John O., 422 Brookhaven, Box 48, Danville 40422, 236-3915, 236-3181
- Taylor, Lucian, Jr., 236 Skyline Trailer Park, Bowling Green 42101, 842-5673 (Bus.)
- Taylor, Timothy R., 3857 Shelly Drive, Owensboro 42301, 684-2316, 264-1222
- Thomas, Bryan P., 400 Starks Bldg., Louisville 40202, 451-5678, 585-5802
- Thompson, Ronnie, P.O. Box 60, Zebulon 41501, 432-1942, 437-6361
- Tomerlin, Allen, 3251 Poplarview Drive, Louisville 40216, 447-4861
- Tucker, Jerome L., 1339 Texas Avenue, Louisville 40217, 635-7965, 896-1757
- Tucker, Joseph P., 23 Aquilla, Florence 41042, 391-8482
- Turner, Larry Glen, Lees Jr. College, Jackson 41339, 666-7525, 666-7521
- Tyre, Don, 316 Senate Drive, Frankfort 40601, 223-3668, 254-6612, Ext. 211 (Lexington)
- Urlage, Richard, 822 Highland Avenue, Ft. Thomas 41075, 441-5513, 874-8820
- Vandermale, John, 3149 Trinity Road, Lexington 40503, 278-4219, 277-3977
- Vidt, John H., 605 Rothbury Lane, Louisville 40243, 245-9176, 425-0477
- Votaw, Tony, 219 Southport Drive, Lexington 40503, 277-5480, 233-2000, Ext. 2564
- Ward, Stephen R., 1404 DeBarr, Louisville 40204, 583-6720, 897-3161, Ext. 115
- Washer, Jamie, 110 Broach Avenue So., Murray 42071, 753-5330, 753-5312
- Watson, Harold T., Jr., 3231 Adams Street, Paducah 42001, 442-0426, 443-8263
- Watts, Elbert W., 5208 Eugene Way, Louisville 40216, 447-8303, 937-2300
- Wellman, David, 622 St. Ann, Owensboro 42301, 683-5619
- Wheeler, David, 1301 Lincoln Avenue, Paintsville 41245, 789-8513, 625-3468
- Whitehead, David, 3932 Phillips, Paducah 42001, 442-5818, 442-6126
- Wilcox, Ursal R., Auxier 41602, 886-3329, 886-2703
- Wiley, Michael J., 10th & Stafford Avenue, Paintsville 41240 789-4530, 789-4001, Ext. 62
- Wilkinson, Jeffrey L., UPO Box 763, M.S.U., Morehead 40351, 783-3391, 783-3391
- Williams, James A., 203 Guthrie, Horse Cave 42749, 786-2867, 758-2214
- Williamson, Junior, Lower Cline Street, Pikeville 41501, 437-7171, 437-9380
- Wilson, Philip M., 5003 Dreamers Way, Louisville 40219, 964-6234
- Winfrey, Shelby, 315 Sharon Drive, Campbellsville 42718, 465-8392, 465-5502
- Wingfield, Felix G., 1132 Eastern Parkway, Louisville 40217, 636-2282, 772-2531
- Wood, Thomas D., 1629 Ehrler Drive, Louisville 40213, 634-9334, 581-3411
- Wright, Brett A., 41 Timberlawn Circle, Frankfort 40601, 784-4749 (Morehead), 987-1395 (Paris)
- Wright, John Wayne, Rt. 3, Box 87-K, Murray 42071, 753-2366, 753-5833
- Wyatt Wayne D., 6011 Applegate Lane, Louisville 40219, 969-2816, 426-2000, Ext. 547
- Zirnheld, Leonard, 9105 Blue Lick Road, Louisville 40219, 969-5925

1975 BASEBALL

EARLY SEASON QUESTIONS

(Continued from Page One)

clare time. He will then advise the batter to advance to 1st base. In this situation, R1, who is on 2nd, and R2, who is on 1st, are forced to advance to 3rd and 2nd bases, respectively. When each base runner has reached his proper base and the pitcher gets on the pitcher's plate with the ball in his possession, the umpire-in-chief will call out "play ball" and beckon the pitcher to pitch. The batter must enter the batter's box before the defensive team can make its request to the umpire and also the umpire must declare time before ordering the batter to go to 1st base. By following this procedure of the umpire declaring time when the request is made, there are no points of confusion for either team.

13. Play: With 2 out and R1 on 3rd and a count of ball two, strike two, F1 delivers a pitch. B4 strikes at and misses the pitch and the ball hits F2 on the shinguard and bounces into the air. F2 grabs the ball while it is still in flight.

Ruling: B4 is declared out since F2 legally caught the 3rd strike. Had the ball hit the bat of B4 and then struck the shinguard of F2, who subsequently grasped the ball in flight, the play would have been ruled an uncaught foul ball.

14. Play: With R1 on 1st, B2 hits a line drive which glances off the mitt of F3 and strikes the head protector of R1 advancing to 2nd base. The batted ball is then caught by F4 before touching the ground. Is the batter declared out?

Ruling: No. The ball remains alive since this is not ruled a catch by F4 although he did get the possession of the ball before it touched the ground, however, as soon as the ball contacted the umpire or R1, its status changed to that of a ground ball. Had not the ball made contact with the base umpire or R1 but ricocheted in flight off the mitt of F3 and then went directly to the glove of F4 who caught the ball, B2 would be out.

15. Play: If F1 is touching the pitcher's plate when his overthrow becomes dead, does this always result in the awarding of one base instead of two bases to each base runner?

Ruling: Yes, provided F1 is touching his plate in a normal pitching situation. If F1 has fielded a batted ball or has fielded a throw and is in contact with his plate when he overthrows a base, he then is an infielder by rule and not delivering a pitch from the pitcher's plate. In such cases, each runner is awarded 2 bases from where he was when the thrown ball left the hand of F1.

16. Play: B1 hits a ground ball towards 1st base. The ball is touched by B1 in his advance to 1st. The touching is (a) intentional; or (b) accidental while the ball is over fair ground; or (c) accidental while the ball is over foul ground before the ball has reached 1st base; or (d) accidental and over foul ground but after ball has become fair by striking 1st base.

Ruling: In (a), it is ruled interference unless the ball is over foul ground with no chance of becoming caught or becoming a fair ball. In (b), it is interference. In (c) and (d), it is not ruled interference because the ball is on or over foul ground and the action was accidental.

17. Play: With R1 on 1st base, F1 commits a balk but the pitch is delivered and hits B2.

Ruling: Because R1 is on 1st, the balk is ignored. The advance of B2 to 1st results in an advance by R1. Had R1 been on another base, the penalty for the balk would have been enforced because the ball became retroactively dead at the time of the balk, the hitting of the batter with the pitch is ignored.

18. Play: B2 hits a fly ball which comes down near a field enclosure with both F9 or F2 attempting a catch. A spectator touches the ball in flight while it is: (a) in front of the wall; or (b) over the stands.

Ruling: Any batted ball touched in flight by a spectator becomes dead immediately. If the umpire feels the ball could have been caught by a fielder, and it was not over the stand, he shall declare the batter out when the spectator interference occurs and order all runners to return to the bases they legally occupied at the time of the pitch. Should a spectator prevent a fair ball from going over the fence in flight, the batter and all base runners are awarded home base. Should a foul ball be touched in flight over the stands, the ball becomes dead immediately and no catch can be allowed.

19. Play: With two out, S1 replaces batter, B6. Before S1 finishes his term at bat, a runner is out to end the inning. Since S1 is not charged with the time at bat, may B6 now return to the field instead of S1?

Ruling: Yes, provided B6 was a starting player who had not previously re-entered the contest. S1 becomes a player as soon as he was announced by the umpire.

20. Play: R2 is on 2nd and R1 on 1st when B3 hits fair ball to F7 who fields the ball on the first bounce. R1 advances to 3rd and continues toward home. F7 throws ball to F2 who fields the ball cleanly and has ball waiting on base path to tag out R1 when latter attempts to score. R1 seeing he has no chance to get past F2 stands up and deliberately barrels into F2 hoping to dislodge the ball from his grasp.

Ruling and Comment: There have been cases reported in which F2 has the ball, standing on the base line, and waiting for the runner who is some distance away. Upon seeing he has no chance of reaching the base safely, the runner remains on his feet and crashes forcefully and deliberately into the catcher or any other fielder, rather than sliding in an attempt to avoid being tagged out thus hoping to jar the defensive player so hard that he will drop the ball. Very severe injury can and has resulted from such unnecessary unsportsmanlike tactics. An experienced umpire can readily recognize such action when it occurs and should declare the runner out for his unsportsmanlike action. If such action by the base runner is interpreted by the umpire as being a flagrant act, the violator can and should be disqualified from the game as well.

21. Play: It is announced that substitute Smith will pinch-hit for starting catcher Brown who is in 6th place in the batting order and has played the entire game. When may Brown reenter the contest?

Ruling: Immediately and he must return to 6th place in the batting order when he does.

(Continued in April Athlete)

TOURNAMENT TIME IS HERE!

A TIME FOR COMPLETE DEDICATION,
KEEN COMPETITION, CLEAN SPORTSMAN-
SHIP AND ENTHUSIASM ON THE PART OF
PLAYERS AND FANS. ONLY ONE TEAM
WILL WIN THE TROPHY, BUT EVERY
PARTICIPANT WILL BENEFIT FROM TAK-
ING PART.

The Kingden Company GENERAL AGENT

W. E. KINGSLEY

CHARLES C. PRICE

AL J. ARBOGAST, C.L.U., Mgr.

Life Department

210 MALABU DRIVE
P. O. BOX 7100

LEXINGTON, KY. 40502

PHONE 276-1472

734 EAST MAIN STREET

PHONE (502) 651-5143

Riherd's SPORT SHOP

GLASGOW, KENTUCKY 42141



DUDLEY

SOFTBALLS

Pitchers, hitters, coaches and officials all agree Dudley softballs are the best!

They're livelier, tougher, more durable and they save money. Pitchers like Dudley for uniform weight and seam stitching, hitters for great distance potential. And officials and everyone else like Dudley softballs because they're guaranteed for six games.

Dudley softballs are consistent. Game after game, ball after ball, the next Dudley softball is like the last, like the one before that and the one before that.

After they've taken tremendous punishment and the leagues are through with them, Dudley softballs can still be passed along for plenty of good playground use. That's how well they're made. Compare Dudley with any other name softballs and see for yourself. You'll learn you can depend on Dudley.

- guaranteed to retain life, shape and firmness for 6 games
- cotton wound cork and rubber centers stay whiter, longer
- uniform weight and size
- Nite & Day or Day covers consistent quality
- take tremendous punishment
- SB12L series approved for all play and tournaments by Amateur Softball Association
- United States Slow-Pitch Softball Association
- International Softball Congress
- Texas Amateur Athletic Federation
- Canadian ASA

FAST PITCH-LEATHER

SB12L-ND (Nite & Day) Official

\$31.95 DOZ.

SLOW PITCH-LEATHER

- approximately 10% less flight
- red stitched for identification
- cotton wound cork and rubber center
- for fewer home runs or play on smaller fields
- Nite & Day cover only
- National Tournament tested since 1971 - approved for slow pitch

SB12L-RF (Restricted Flight) Official

\$31.95 DOZ.

Less 10% on orders of 6 dozen or more.

