

9-1-1985

The Kentucky High School Athlete, September 1985

Kentucky High School Athletic Association

Follow this and additional works at: <http://encompass.eku.edu/athlete>

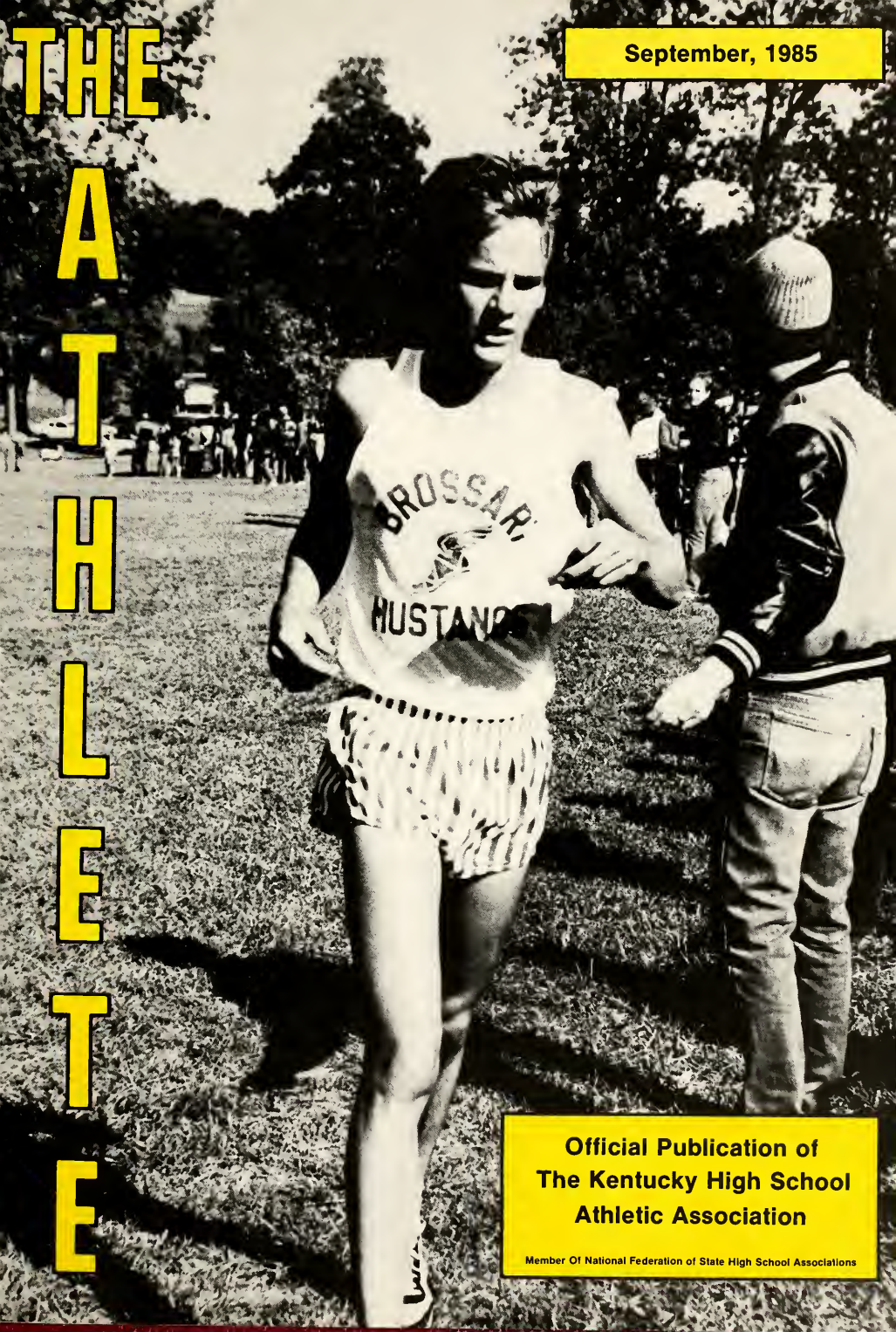
Recommended Citation

Kentucky High School Athletic Association, "The Kentucky High School Athlete, September 1985" (1985). *The Athlete*. Book 311.
<http://encompass.eku.edu/athlete/311>

This Article is brought to you for free and open access by the Kentucky High School Athletic Association at Encompass. It has been accepted for inclusion in The Athlete by an authorized administrator of Encompass. For more information, please contact Linda.Sizemore@eku.edu.

THE A T H L E T E

September, 1985



**Official Publication of
The Kentucky High School
Athletic Association**

Member Of National Federation of State High School Associations

SUPPORT SCHOOL ACTIVITIES

NATIONAL HIGH SCHOOL
ACTIVITIES WEEK
OCTOBER 20-27



**SPORT
GOOFY**

THE NATIONAL MASCOT OF HIGH SCHOOL SPORTS



The Kentucky High School Athlete

Official Publication of the
Kentucky High School Athletic Association

VOL. XLVIII NO. 2

SEPTEMBER, 1985

\$5.00 PER YEAR

Officers Elected for K.H.S.A.A. Board of Control

By Julian Tackett



Pat Crawford

Chester Turner

Pat Crawford, former Principal of Ballard High School in Louisville, and Chester Turner, Principal of Highlands High School in Fort Thomas, were elected President and Vice-President, respectively, of the Kentucky High School Athletic Association at the July meeting of the Board held at Lake Barkley State Park.

Crawford, who is currently serving as a Special Assistant to the Deputy Superintendent of the Jefferson County Schools, served as Ballard's Principal from 1968 until this past July. Prior to his tenure at Ballard, Crawford served as a middle school principal, assistant principal, teacher and coach at various locations in the Jefferson County system. He has been involved in athletics throughout his education career including a stint as head swimming coach and assistant football coach at Waggener High School.

When asked why he wanted to serve on the Board, and particularly why he wished to be an officer, Crawford said, "I feel as though the Board is in a growing time, experiencing more and more leadership and further developing our values and ideals." "I enjoy being a part of that and helping to contribute," he concluded. He probably would have retired this past July were it not for his new office on the Board, but he felt the need to finish this commitment and to offer himself to the Board and to the member schools. His hopes are for the Board and the Association to continue to improve their administrative growth and school communication while also further refining working procedures.

Crawford plans on retiring in July of 1986 to Sanibel Island, Florida with his wife Suzanne, a thirty year teacher in the Jefferson County system. The Crawfords have one child, a daughter, Jennifer.

Principal Chester Turner of Highlands is no stranger to athletics or administration. The new Vice-President of the Board is in his sixteenth year as Highlands' Principal following eleven years as an Assistant Principal at Covington Holmes. He has been actively involved in Ninth Region athletics and on a statewide level with various associations concerned with perpetuating and improving Kentucky's education.

Turner, currently in his third year as a Board member, ran for Board originally because of his feelings for athletics' involvement in the high school education. "Athletics is a very important part of the total educational program," he said, "and I felt as though I had something to offer the Board and the schools."

During his remaining tenure, Turner would like to see the Association and the Board be more responsive to schools and provide more leadership in such areas as scheduling and the total program. "I would like to see us

work closer with academics so that athletics complements academics, and not the reverse," he said, "and occasionally I am afraid we forget that academics is first."

Turner, and his wife Marjorie, a retired civil service employee, have one son, Kevin, a 23 year old working in the greater Cincinnati area.



MINUTES OF THE EAST ELIGIBILITY COMMITTEE MEETING

The East Eligibility Committee of the Kentucky High School Athletic Association met at the K.H.S.A.A. Office, Lexington, on Wednesday, August 28, 1985. The meeting was called to order at 10:30 a.m. by Commissioner Tom Mills. Present were Tony Olinger, Chairman of the East Eligibility Committee, Ken Tippett, Chester Turner, Frank Welch and Charlie Wilson.

Commissioner Mills explained that the hearing would be informal and called upon Alice Keys, Attorney for Clayton Plageman, to proceed with her case. Also present on behalf of Clayton Plageman were Karen Plageman, his mother; Principal William Dosch, Bellevue High School; Bill Penick, Director of the Day Treatment Program; and Alice Martinson, Educational Coordinator, Treatment Programs.

Commissioner Mills had declared Clayton Plageman ineligible to participate in interscholastic athletics based on By-Law 5, Sec. 1 (c). Karen Plageman had requested a hearing before the Board to request that they waive By-Law 5, as it applied to Clayton and declare him eligible.

Following testimony by all parties on behalf of Clayton and questions by the Committee members, Charlie Wilson made a motion, seconded by Ken Tippett that the decision of the Commissioner be upheld in this case. The motion carried unanimously.

Commissioner Mills then called on Bob Tighe who had requested a hearing also to appeal the decision of the Commissioner as it related to By-Law 6, Transfer Rule. Robie and Alicia Tighe were declared ineligible to participate in interscholastic athletics when they transferred from Sayre High School to Lafayette High School.

Following comments to the Committee by Bob Tighe, Mrs. Tighe, Robie and Alicia and questions to the Tighes, and a lengthy discussion thereof, Ken Tippett made a motion, seconded by Chester Turner, that the decision of the Commissioner be upheld in this case. The motion carried unanimously.

There being no further appeals to come before the Eligibility Committee, the meeting was adjourned.

SPECIAL NOTICE

Principals and Superintendents:

Reminder! Get your Boys and Girls State Basketball Tournament Ticket Orders in to the K.H.S.A.A. Office by November 1, 1985 to insure priority.

SEPTEMBER, 1985 VOL XLVIII, NO. 2

Published monthly, except June and July, by the Kentucky High School Athletic Association, Office of Publication, 560 E. Cooper Dr., P.O. Box 22280, Lexington, KY 40522.

Third class postage paid at Richmond, Kentucky. Acceptance for mailing at special rate of postage provided for in Section 1103. Act of October 3, 1917, authorized May 3, 1926. Publication No. 293080.

Please send notice of undelivered copies on form 3579 to: K.H.S.A.A., P.O. Box 22280, Lexington, Kentucky 40522.

Editor **TOM MILLS**
Assistant Editor **ANNE WESLEY MAYS**
Assistant Editor **BRIGID L. DeVRIES**
Assistant Editor **LOUIS STOUT**
Assistant Editor **BILLY V. WISE**
Assistant Editor **JULIAN TACKETT**
Lexington, Kentucky

BOARD OF CONTROL

President-Patrick L. Crawford (1982-1986) Louisville, Vice President-Chester Turner (1983-1987) Fort Thomas, Tom Buchanan (1985-1989) Eddyville, Tony Olinger (1984-1988) Lexington, Ray Story (1982-1986) Radcliff, Grant Talbott (1984-1988) Ownesboro, Ken Tippett (1985-1989) Versailles, David Webb (1983-1987) Brownsville, Frank Welch (1984-1988) Belfry, Charlie Wilson (1984-1988) Hyden, Lloyd Redman-State Department of Education Representative.

Subscription Rate \$5.00 per year

The committee reviewed the state tournament information sheet and made some revisions. It was suggested that a statement be included referring to the fact that substitutions may be made for team members only, not individuals. Bill Frost suggested that regional results be phoned in to the Courier Journal, as well as being mailed to him. It was also suggested that the phone number of the faculty sponsor be included on the regional entry blank. It was suggested that Jackie Reed assist Bill Frost in securing marshals for the 1986 girls' tournament. It was recommended that rule sheets be available for participants at the meeting held the evening before the tournaments.

The next item included a discussion of golf as a fall sport. The committee was unanimous in its support for golf in the fall and will send a recommendation to the July Board of Control meeting at Lake Barkley where this topic will be an item on the agenda.

There being no further business, the meeting was adjourned.



GOLF COMMITTEE MEETING MINUTES

The Golf Committee met on Monday, June 10, 1985, at the Kentucky High School Athletic Association office in Lexington. Assistant Commissioner Brigid L. DeVries called the meeting to order at 10:00 A.M. Committee members present were: Ernie Denham, Jackie Reed, Lou Brown, Danny Spillman, Bill Frost and Tish Carr.

The first item on the agenda was regional tournament information. The date for the tournaments are May 27 and 28, 1986. The committee made some major changes in the information which will be mailed to the schools. The reduction of regions and alignment of schools by region was discussed with the recommendation that each committee member receive a copy for review.

Ernie Denham gave a short report of the status of golf in Jefferson County. He will be conducting 5 clinics around the state in early spring and the K.H.S.A.A. will assist in promoting these clinics. The clinics will be geared toward the high school player and coach.

The second item on the agenda was a discussion of the state tournaments. The dates for the tournaments are June 3 and 4, 1986. The boys' tournament will be played at Doe Valley Country Club in Brandenburg and the girls' tournament will be at Elizabethtown Country Club, Elizabethtown.



VOLLEYBALL INFORMATION

The K.H.S.A.A. will sponsor regional and state volleyball tournaments in October and November, 1985. The regional tournaments will be held during the week of October 21st and the State Tournament is scheduled for November 1st and 2nd at the University of Kentucky, Lexington, Ky.

The manager will be Assistant Commissioner Brigid L. DeVries.

The region sites and teams assigned to each are listed below:

Region I (at Fairdale High School)-Beth Haven Butler, Doss, Evangel, Fairdale, Fort Knox, Holy Rosary, Pleasure Ridge Park, Shawnee, Valley, Western;

Region II (at Iroquois High School)-Atherton, Central, Iroquois, Male, Manual, Mercy, Moore, Ninth & 0, Portland Christian, Presentation, Southern, Southwest Christian;

Region III (at Ballard High School) Assumption Ballard, Christian Academy, Eastern, Fern Creek, Fort Campbell, Jeffersontown, Ky., Country Day, Oldham County, Sacred Heart, Seneca, Waggener;

Region IV (at Dixie Heights, St. Henry and Holy Cross)-Beechwood, Dixie Heights, Holmes, Holy Cross, Lloyd Memorial, Ludlow, Notre Dame, St. Henry, Scott, Simon Kenton, Villa Madonna;

Region V (at Newport)-Bellevue, Boone County, Bishop Brossart, Campbell County, Carroll County, Conner, Dayton, Highlands, Newport, Newport Central Catholic, Walton Verona;

Region VI (at Sportsworld-Lexington)-Oneida Baptist, Paul Blazer, Rowan County, Woodford County.

1985 CROSS COUNTRY REGIONS

The regional sites, managers and teams are assigned to each class and are listed below. Each school listed will receive from the regional manager an information sheet and entry form to the meet.

REGION I:

Manager: Willie Simpson, Providence High School, Cedar Street, Providence, Kentucky 42450 (502-667-7065)

Boys Class A: Central City, Crittenden County, Fort Campbell, Fulton, Fulton County, Graham, Hughes-Kirk, Lyon County, Muhlenberg Central, Providence, Reidland, South Hopkins, St. Mary, Trigg County, West Hopkins

Girls Class A: Central City, Crittenden County, Fort Campbell, Fulton, Graham, Hughes-Kirk, Lyon County, Muhlenberg Central, Providence, South Hopkins, Trigg County, West Hopkins

Manager: Tony Rowe, Daviess County High School, 4255 New Hartford Road, Owensboro, Kentucky 42301 (502-684-5285)

Boys Class AA: Bowling Green, Breckinridge County, Calloway County, Grayson County, Owensboro Catholic, Union County, Webster County, Warren East

Girls Class AA: Bowling Green, Breckinridge County, Calloway County, Grayson County, Owensboro Catholic, Union County, Webster County, Warren East

Boys Class AAA: Apollo, Christian County, Daviess County, Henderson County, Hopkinsville, Madisonville-North Hopkins, Marshall County, North Hardin, Owensboro, Warren Central

Girls Class AAA: Apollo, Christian County, Daviess County, Henderson County, Hopkinsville, Madisonville-North Hopkins, Marshall County, North Hardin, Owensboro, Warren Central

REGION II

Manager: Bobby Williams, West Hardin High School, Stephensburg, Kentucky 42781 (502-862-3924)

Boys Class A: Bardstown, Bethlehem, Caverna, Christian Academy, Edmonson County, Fort Knox, Glasgow, Green County, Hancock County, Hart County, Kentucky Country Day, Monroe County, St. Francis, Trinity (Whitesville), West Hardin, Trimble County

Girls Class A: Bardstown, Bethlehem, Caverna, Edmonson County, Fort Knox, Glasgow, Hancock County, Hart County, Kentucky Country Day, Monroe County, St. Francis, Trimble County, Trinity (Whitesville) West Hardin

Boys Class AA: Barren County, East Hardin, Elizabethtown, LaRue County, Meade County, North Bullitt, Washington County, Franklin-Simpson

Girls Class AA: Barren County, East Hardin, Elizabethtown, LaRue County, Meade County, North Bullitt, Washington County, Franklin-Simpson

Manager: Bro. Borgia, St. Xavier High School, 1609 Poplar Level Road, Louisville, Kentucky 40217 (502-637-4712)

Boys Class AAA: Atherton, Butler, Central, duPont Manual, Iroquois, Male, Shawnee, St. Xavier

Girls Class AAA: Atherton, Butler, Central, duPont Manual, Iroquois, Male, Presentation Academy, Sacred Heart Academy, Shawnee

REGION III

Manager: Barry Binkley, Dayton High School (at Thomas Moore), 200 Jackson Street, Dayton, Kentucky 41074 (606-261-4357)

Boys Class A: Bellevue, Bishop Brossart, Covington Latin, Dayton, Ludlow, Newport Central Catholic, Silver Grove, St. Henry, Walton-Verona

Girls Class A: Bellevue, Bishop Brossart, Dayton, Ludlow, Newport Central Catholic, Silver Grove, St. Henry, Walton-Verona

Boys Class AA: Conner, Covington Catholic, Dixie Heights, Highlands, Lloyd Memorial, Pendleton County, Scott, Simon-Kenton

Girls Class AA: Conner, Dixie Heights, Highlands, Lloyd Memorial, Pendleton County, Scott, Simon-Kenton

Manager: Rich Rostal, Trinity High School, 4011 Shelbyville Road, Louisville, Kentucky 40207 (502-895-9427)

Boys Class AAA: Ballard, Eastern, Fern Creek, Jeffersonstown, Moore, Oldham County, Seneca, Trinity (Louisville), Waggener

Girls Class AAA: Assumption, Ballard, Eastern, Fern Creek, Moore, Oldham County, Seneca

REGION IV

Manager: Frank Miklavcic, Frankfort High School, 328 Shelby Street, Frankfort, Kentucky 40601 (502-223-8030)

Boys Class A: Anderson County, Augusta, Carroll County, Frankfort, Gallatin County, Grant County, Lexington Catholic, Maysville, Owen County, Spencer County, Williamstown

Girls Class A: Anderson County, Frankfort, Gallatin County, Grant County, Lexington Catholic, Owen County, Spencer County, Williamstown, Carroll Co.

Boys Class AA: Bourbon County, Fleming County, Franklin County, Harrison County, Jessamine County, Mason County, Montgomery County, Scott County, Western Hills, Woodford County

Girls Class AA: Bourbon County, Franklin County, Harrison County, Jessamine County, Montgomery County, Scott County, Western Hills, Woodford County

Manager: Russ Kline, Pleasure Ridge Park High School, 5901 Greenwood Road, Louisville, Kentucky 40258 (502-454-8311)

Boys Class AAA: Bullitt Central, DeSales, Doss, Fairdale, Holy Cross, Pleasure Ridge Park, Shelby County, Southern, Valley, Western

Girls Class AAA: Doss, Fairdale, Holy Cross, Holy Rosary, Mercy Academy, Pleasure Ridge Park, Shelby County, Southern, Valley, Western

REGION V

Manager: Gordon Bocock, Pulaski County High School, 311 East University Drive, Somerset, Kentucky 42501 (606-679-1574)

Boys Class A: Berea, Burgin, Garrard County, Harlan, Harrodsburg, Kentucky School f/t Deaf, Mercer County, Model, Monticello, Somerset, Wayne County

Girls Class A: Berea, Burgin, Garrard County, Harlan, Harrodsburg, Kentucky School f/t Deaf, Mercer County, Model, Monticello, Somerset, Wayne County, Central Kentucky Christian School (Boys and Girls)

Boys Class AA: Adair County, Bell County, Boyle County, Clay County, Danville, Knox Central, McCreary Central, Marion County, Middlesboro, Taylor County, Whitley County

Girls Class AA: Adair County, Bell County, Boyle County, Clay County, Danville, Knox Central, McCreary Central, Marion County, Middlesboro, Taylor County, Whitley County

(Continued on Page Ten)

BATH COUNTY - CLASS A GIRLS

Kentucky High School Track Meet

Lexington, Kentucky-May 25, 1985



(L to R) First Row: Angel McNabb, Connie Lawson, Crystal Potts, Tina Goodpasture. Second Row: Pamela Goodpasture, Sandra Caudill, Stacy Crouch, Debbie Thompson. Third Row: Lu Wills, Cherie Hedricks, Kim Hawkins, Lea Miller, Coach Hopey Newkirk.

300m Low Hurdles

| | |
|--------------------------------------|-------|
| 1. Gay, Carla (11) Madison | 46.95 |
| 2. Case, Barbie (10) Bellevue | 47.72 |
| 3. Ray, Michelle (9) Ballard Mem. | 48.36 |
| 4. Messmer, Molly (11) Newport Cath. | 48.81 |
| 5. Griffin, Stephanie (11) Oneida | 50.79 |
| 6. Lawson, Connie (8) Bath | 51.15 |

100m Low Hurdles

| | |
|-------------------------------------|-------|
| 1. Bollinger, Michelle (12) Ft Knox | 15.0 |
| 2. Daniel, Gail (12) Ft. Campbell | 15.25 |
| 3. Thomas, Scheome (8) LaRue Co. | 15.40 |
| 4. Brown, Kate (9) Caldwell Co. | 15.59 |
| 5. Canter, Amy (12) Lewis Co. | 15.76 |
| 6. Doctor, Laurie (11) Bellevue | 16.15 |

100m Dash

| | |
|--------------------------------------|-------|
| 1. Beach, Jackie (11) Frankfort | 12.62 |
| 2. Wilson, Michelle (9) Bullitt East | 12.86 |
| 3. Miller, Lea (12) Bath Co. | 12.90 |
| 4. Howard, Leslie (12) Harlan Co. | 13.11 |
| 5. Trice, Yvette (11) Ft. Campbell | 13.16 |
| 6. Rainwater, Ladawn (8) LaRue | 13.17 |

200m Dash

| | |
|---------------------------------------|-------|
| 1. Beach, Jackie (12) Frankfort | 25.86 |
| 2. Pritchard, Maria (11) Ballard Mem. | 26.68 |
| 3. Miller, Lea (12) Bath Co. | 26.63 |
| 4. Wilson, Michelle (9) Bullitt East | 26.65 |
| 5. Johnson, Shannon (10) Todd Cent. | 27.03 |
| 6. Cheatham, Tammi (10) Carroll Co | 27.29 |

400m Dash

| | |
|---------------------------------------|---------|
| 1. Beach, Jackie (11) Frankfort | 58.00 |
| 2. Pritchard, Maria (11) Ballard Mem. | 58.21 |
| 3. Winkfield, Serena (8) Frankfort | 61.00 |
| 4. LaDonna, Kimbell (11) West Hardin | 61.38 |
| 5. Marsh, Heather (7) Oneida | 61.66 |
| 6. Stamper, Stephanie (9) Berea | 1:02.47 |

800m Run

| | |
|------------------------------------|---------|
| 1. Hawkins, Kim (12) Bath Co. | 2:18.81 |
| 2. Hall, Marcia (11) Providence | 2:20.93 |
| 3. Winkfield, Serena (8) Frankfort | 2:27.00 |
| 4. Stamper, Stephanie (9) Berea | 2:28.66 |
| 5. May, Leslie (10) Providence | 2:29.56 |
| 6. Bryant, Melody (9) Menfee Co. | 2:30.25 |

1600m Run

| | |
|--------------------------------------|---------|
| 1. Hawkins, Kim (12) Bath Co. | 5:11.50 |
| 2. May, Leslie (10) Providence | 5:25.75 |
| 3. Wissman, Tracy (11) St. Henry | 5:28.72 |
| 4. Moutoux, Pam (12) Ky. Country Day | 5:30.06 |
| 5. Powell, Lesenna (6) Providence | 5:34.50 |
| 6. Edgar, Stephanie (7) Dayton | 5:35.33 |

400m Run

| | |
|---------------------|-------|
| 1. Fort Campbell | 50.37 |
| 2. Madison | 50.91 |
| 3. Fort Knox | 51.15 |
| 4. Todd Co. Central | 51.72 |
| 5. Bellevue | 51.84 |
| 6. Harlan | 52.67 |

800m Relay

| | |
|-------------------------|---------|
| 1. Bath County | 1:48.26 |
| 2. Fort Knox | 1:48.78 |
| 3. Somerset | 1:49.91 |
| 4. Trigg County | 1:50.29 |
| 5. Harlan | 1:51.77 |
| 6. Newport Central Cath | |

3200m Relay

| | |
|------------------------------------|----------|
| 1. Edgar, Stephanie (7) Dayton | 12:32.66 |
| 2. Powell, Lesenna (60) Providence | 11:58.56 |
| 3. Belt, Candy (7) Providence | 11:58.81 |
| 4. Goodpasture, Tina (7) Bath Co. | 12:32.66 |
| 5. Thompson, Vicki (11) Green Co. | 12:56.72 |
| 6. Tanner, Carrie (7) LaRue | 13:24.43 |

1600m Relay

| | |
|---------------------|---------|
| 1. Frankfort | 4:11.11 |
| 2. St. Henry | 4:11.63 |
| 3. Ballard Memorial | 4:15.06 |
| 4. Bath County | 4:15.46 |
| 5. Somerset | 4:18.69 |
| 6. Trigg Co | 4:19.31 |

Discus

| | |
|--|---------|
| 1. Rosa, Linda (11) Madison | 120'10" |
| 2. Powell, Anita (11) Laurel Co. | 112'7" |
| 3. Waller, Lori (12) Walton Verono | 111'11" |
| 4. Bryant, Shatrecia (11) Ft. Campbell | 108'8" |
| 5. Fowler, Brenda (10) Providence | 107" |
| 6. Saylor, Pam (10) Harlan | 96'8" |

Shot Put

| | |
|------------------------------------|------------|
| 1. Waller, Lori (12) Walton Verona | 37'2" |
| 2. Powell, Anita (11) LaRue Co. | 37'11 1/2" |
| 3. Melvin, Anita (11) Fort Knox | 35'11" |
| 4. Lewis, Lisa (12) Todd Central | 34'10" |
| 5. Wills, Lawanna (9) Bath Co. | 33'9" |
| 6. Turner, Hilari (11) Owen Co. | 33'7" |

High Jump

| | |
|-------------------------------------|-------|
| 1. Blanton, Sonya (10) Edmonson Co. | 5'3" |
| 2. Shea, Maureen (12) St. Henry | 5'3" |
| 3. Hickman, Phyllis (11) Bardstown | 5'2" |
| 4. Kaufman, Denna (12) Anderson Co. | 5'0" |
| 5. Baxter, Marvel (12) Anderson Co. | 4'10" |
| 6. Gentry, Leslie (11) Fairview | 4'10" |

Long Jump

| | |
|--------------------------------------|------------|
| 1. Shea, Maureen (12) St. Henry | 16'11 1/2" |
| 2. Brown, Katie (9) Caldwell Co. | 16'6 1/2" |
| 3. Glass, Amy (10) Somerset | 16'8 1/2" |
| 4. Short, Renee (10) Hazard | 16'11 1/2" |
| 5. Woesta, Theresa (10) Bishop Bros. | 15'8 1/2" |
| 6. Elliott, Tokeka (11) Russellville | 15'16 1/2" |

TOTAL POINTS

| | |
|----------------------|----|
| Bath County | 53 |
| Frankfort | 52 |
| Providence | 36 |
| St. Henry | 32 |
| Fort Knox | 30 |
| Madison | 28 |
| Ballard Memorial | 28 |
| Fort Campbell | 24 |
| LaRue County | 24 |
| Walton-Verona | 16 |
| Somerset | 14 |
| Caldwell County | 12 |
| Bullitt East | 12 |
| Bellevue | 11 |
| Dayton | 11 |
| Edmonson County | 10 |
| Todd County Central | 10 |
| Harlan County | 8 |
| Bardstown | 6 |
| Anderson County | 6 |
| Berea | 5 |
| Trigg County | 5 |
| Newport Catholic | 5 |
| Kentucky Country Day | 4 |
| Hazard | 4 |
| West Hardin | 4 |
| Oneida | 4 |
| Lewis County | 2 |
| Bishop Crossair | 2 |
| Green County | 2 |
| Fairview | 1 |
| Owen County | 1 |
| Russellville | 1 |
| Menfee County | 1 |
| Carroll County | 1 |

FORT KNOX HIGH SCHOOL - CLASS A BOYS

Kentucky High School Track Meet Lexington, Kentucky-May 25, 1985



(L to R) Front Row: Pat Williams, Shawn Coles, Darren Bilberry. Second Row: Reggie Watson, Roddre Massey, Calvin Banks. Third Row: Coaches Dave Shuteit, Mike McCoy.

100m Dash

| | |
|------------------------------------|-------|
| 1. Baker, Al (11) Trigg Co. | 10.70 |
| 2. Mitchell, Mark (12) Lex. Cath | 10.78 |
| 3. Williams, Patrick (11) Ft. Knox | 10.98 |
| 4. Allen, Henry (11) Ft. Campbell | 11.00 |
| 5. Carmichael, David Hazard | 11.32 |
| 6. Dickman, Bob (12) Ludlow | 11.36 |

200m Dash

| | |
|----------------------------------|-------|
| 1. Baker, Al (11) Trigg Co. | 22.39 |
| 2. Mitchell, Mark (12) Lex. Cath | 22.50 |
| 3. Williams, Pat (11) Ft. Knox | 22.84 |
| 4. Massey, Rodre' (10) Ft. Knox | 22.99 |
| 5. Robinson, Rodrick (12) Harlan | 23.08 |
| 6. Dickman, Bob (12) Ludlow | 23.46 |

400m Dash

| | |
|------------------------------------|---------|
| 1. Bilberry, Darren (12) Ft. Knox | 49.69 |
| 2. Mitchell, Mark (12) Lex. Cath | 50.07 |
| 3. Finch, Sean (11) Todd Co. Cent | 50.32 |
| 4. Kessler, Ritchie (12) Green Co. | 51.10 |
| 5. Wiesehahn, Tim (12) Lex. Cath | 51.28 |
| 6. Powell, Terry (11) Providence | 1:01.37 |

800m Run

| | |
|----------------------------------|---------|
| 1. White, Kirby (12) Jenkins | 1:58.66 |
| 2. Kuper, John (11) Bishop Bross | 1:58.99 |
| 3. Mays, John (12) Anderson Co. | 2:00.56 |
| 4. Baker, Tracey (12) Trigg Co. | 2:01.00 |
| 5. Underwood, Steve (9) Harlan | 2:01.75 |
| 6. Otis, Mark (11) LaRue Co. | 2:02.47 |

1600m Run

| | |
|-------------------------------------|---------|
| 1. Kuper, John (11) Bishop Brossart | 4:23.18 |
| 2. Cuniff, Cob (10) Berea | 4:25.45 |
| 3. Otis, Mark (11) LaRue Co. | 4:31.75 |
| 4. Moll, Jeff (10) Lexington Cath | 4:31.75 |
| 5. Steel, John (10) Bath County | 4:37.09 |
| 6. Garland, Craig (12) Trigg | 4:40.22 |

3200m Run

| | |
|-------------------------------------|----------|
| 1. Cuniff, Cob Berea | 9:42.75 |
| 2. Moll, Jeff (10) Lexington, Cath | 9:44.59 |
| 3. Wright, Lynus (11) Trigg Co. | 9:53.18 |
| 4. Steel, John (10) Bath Co. | 10:11.44 |
| 5. Bertram, Mark (12) Bishop Bross. | 10:19.38 |
| 6. Minks, John (9) Harlan | 10:46.00 |

110m High Hurdles

| | |
|---------------------------------------|-------|
| 1. Overstreet, Donald (10) St. Mary's | 14.97 |
| 2. Frazier, Frank (11) Berea | 15.68 |
| 3. Thomas, Willie (12) Todd Central | 15.74 |
| 4. Zachary, Derek (11) Nicholas Co. | 15.74 |
| 5. Neat, Greg (11) Campbellville | 16.13 |
| 6. Brightwell, Steve (12) Carroll Co. | 16.64 |

300m Low Hurdles

| | |
|--|-------|
| 1. Massey, Rodre' (10) Ft. Knox | 37.94 |
| 2. Dickman, Bob (12) Ludlow | 39.37 |
| 3. Thomas, Willie (12) Todd Cent. | 39.63 |
| 4. Hall, Joe (12) St. Mary's | 39.37 |
| 5. Coldiron, Phillip (11) Nicholas Co. | 40.28 |
| 6. Marshall, Jeff (12) LaRue Co. | 41.97 |

400m Relay

| | |
|--------------------|---------|
| 1. Fort Campbell | 43.46 |
| 2. Fort Knox | 3:29.03 |
| 3. Bardstown | 45.11 |
| 4. Ludlow | 45.11 |
| 5. Nicholas County | 45.69 |
| 6. Trigg Co. | 45.78 |

1600m Relay

| | |
|-----------------------|---------|
| 1. Fort Knox | 3:24.24 |
| 2. Bellevue | 3:29.03 |
| 3. Todd Central | 3:30.08 |
| 4. Somerset | 3:30.80 |
| 5. Lexington Catholic | 3:32.38 |
| 6. Providence | 3:34.66 |

Shot Put

| | |
|------------------------------------|-------|
| 1. Mouch, Mark (12) Somerset | 51'2" |
| 2. Baker, Al (11) Trigg Co. | 51'2" |
| 3. Blair, Jerry (12) Berea | 49'6" |
| 4. Enlow, Alvin (12) Harlan | 48'6" |
| 5. Weber, Steve (11) Newport Cath. | 47'7" |
| 5. Pittman, Jim (12) Harrodsburg | 46'7" |

High Jump

| | |
|---|------|
| 1. Overstreet, Donald (10) St. Marys | 6'6" |
| 2. Williams, G.C. (12) Todd Central (tie) | 6'4" |
| 3. Payne, Mike (12) Berea (tie) | 6'4" |
| 4. Dotson, Gary (11) Nicholas Co. | 6'4" |
| 5. Martin, Keith (12) Madison | 6'4" |
| 6. Whitte, Harold (10) Harrodsburg | 6'2" |

Pole Vault

| | |
|--------------------------------------|-------|
| 1. Casey, Mark (12) Anderson Co. | 12'6" |
| 2. Schindley, Robert (12) Providence | 12'6" |
| 3. Wallace, Jon (12) Berea | 12'0" |
| 4. Veatch, Bryan (11) Bellevue | 12'0" |
| 5. McMonigal, Mike (12) Oneida | 11'0" |
| 6. Wilson, Roy (10) Edmonson Co. | 10'6" |

Long Jump

| | |
|------------------------------------|-----------|
| 1. Mattingly, Paul (12) Bardstown | 21'11" |
| 2. Whitte, Harold (10) Harrodsburg | 21'7" |
| 3. Robinson, Rodrick (12) Harlan | 21'4 1/2" |
| 4. Williams, G.C. (12) Todd Cen. | 21'2" |
| 5. Young, Rocky (12) Nicholas Co. | 20'5" |
| 6. Harns, Wendell (12) Frankfort | 20' 1/2" |

Triple Jump

| | |
|------------------------------------|------------|
| 1. Mattingly, Paul (12) Bardstown | 45'0 1/2" |
| 2. Whitte, Harold (10) Harrodsburg | 44'0 1/2" |
| 3. Munphrey, Marc (9) Carroll Co | 43'6 1/2" |
| 4. Allen, Henry (11) Ft. Campbell | 41'6 1/2" |
| 5. Young, Rocky (12) Nicholas Co. | 41'2 1/2" |
| 6. Willet, Robert Providence | 40'10 1/2" |

Discus

| | |
|-------------------------------------|--------|
| 1. Mounce, Mark (12) Somerset | 144'7" |
| 2. Gannonds, Dwayne (12) Murray | 142'7" |
| 3. McMurty, Quinn (11) Newport Cath | 137'6" |
| 4. Pittman, Jim (12) Harrodsburg | 132'5" |
| 5. Blair, Jerry (12) Berea | 129'1" |
| 6. Melber, David (12) Heath | 126'5" |

TOTAL POINTS

| | |
|---------------------|----|
| Fort Knox | 54 |
| Berea | 47 |
| Lexington Catholic | 40 |
| Trigg County | 40 |
| Todd County Central | 35 |
| Bardstown | 26 |
| Somerset | 24 |
| St. Mary's | 24 |
| Harrodsburg | 22 |
| Bishop Brossart | 20 |
| Fort Campbell | 18 |
| Nicholas County | 16 |
| Anderson County | 16 |
| Harlan | 15 |
| Ludlow | 15 |
| Bellevue | 12 |
| Providence | 11 |
| Jenkins | 10 |
| Newport Catholic | 8 |
| Murray | 8 |
| LaRue County | 8 |
| Carroll County | 7 |
| Bath County | 6 |
| Green County | 6 |
| Campbellville | 2 |
| Hazard | 2 |
| Oneida | 2 |
| Madison | 2 |
| Edmonson County | 1 |
| Frankfort | 1 |
| Heath | 1 |

DANVILLE HIGH SCHOOL - CLASS AA GIRLS

Kentucky High School Track Meet Lexington, Kentucky-May 25, 1985



(L to R) First Row: Karin Terry, Susan Rankin, Katey Stamps, Tina Robinson. Second Row: Monica Clark, Teresa Harris, Kim Ingram, Vicky Alcorn, Sara Jackson. Thrid Row: Keisha Tillman, Jennie Reigelman, Coach James Adkins, Sharon Woods, Pam Clements.

300m Low Hurdles

| | |
|---------------------------------------|-------|
| 1. Acquaviva, Cathy (12) Franklin Co. | 45.54 |
| 2. Schimmoeiler, Chris (10) Woodford | 46.21 |
| 3. Tillman, Keshia (8) Danville | 47.34 |
| 4. Skinner, Geraldine (12) Union Co. | 47.69 |
| 5. Goins, Chanta (11) Franklin Simp. | 48.73 |
| 6. Combs, Brigett (12) Whitesburg | 48.86 |

100m Low Hurdles

| | |
|---------------------------------------|-------|
| 1. Acquaviva, Cathy (12) Franklin Co. | 14.77 |
| 2. Schimmoeiler, Chris (10) Woodford | 15.12 |
| 3. Goins, Chanta (11) Franklin Simp. | 15.29 |
| 4. Galloway, Amy (9) Owens, Cath. | 15.60 |
| 5. Combs, Brigett (12) Whitesburg | 15.92 |
| 6. Tillman, Keisha (8) Danville | 15.99 |

100m Dash

| | |
|---------------------------------------|-------|
| 1. Robinson, Tina (9) Danville | 12.59 |
| 2. Cook, Kelly (10) Franklin Simp. | 12.68 |
| 3. Bray, Daphne (10) Franklin Simp. | 12.72 |
| 4. Weathers, Margaret (11) Washington | 12.84 |
| 5. Jackson, Yvette (11) Franklin Co. | 12.93 |
| 6. Grimes, Marice (10) Calloway Co. | 12.93 |

200m Dash

| | |
|-------------------------------------|-------|
| 1. Custard, Mary (11) Harrison | 25.91 |
| 2. Cook, Kelly (10) Franklin Simp. | 26.10 |
| 3. Grimes, Marice (10) Calloway Co. | 26.34 |
| 4. Alcorn, Nickie (9) Danville | 26.73 |
| 5. Zimmerman, Cindy (11) Lloyd Mem. | 26.89 |
| 6. Robinson, Tina (9) Danville | 26.87 |

400m Dash

| | |
|-------------------------------------|---------|
| 1. Custard, Mary (11) Harrison Co. | 59.45 |
| 2. Zimmerman, Cindy (11) Lloyd Mem. | 60.27 |
| 3. Reigelman, Jennie, Danville | 61.60 |
| 4. Asher, Tonya (9) Clay County | 61.76 |
| 5. Coomer, Torina (10) Clay County | 62.45 |
| 6. Grimes, Marice (10) Calloway Co. | 1:02.46 |

800m Run

| | |
|------------------------------------|---------|
| 1. Plank, Kathy (12) Conner | 2:19.81 |
| 2. Boggs, Deanna (11) Whitesburg | 2:20.14 |
| 3. Coles, Pepper (11) Logan Co. | 2:24.30 |
| 4. Asher, Tonya (9) Clay Co. | 2:25.40 |
| 5. Schimmoeiler, Trina (10) Wofd. | 2:25.60 |
| 6. Reigelman, Jennie (11) Danville | 2:30.57 |

1600m Run

| | |
|-----------------------------------|---------|
| 1. Boggs, Deanna (11) Whitesburg | 5:13.43 |
| 2. Rankin, Susan (9) Danville | 5:13.91 |
| 3. Plank, Kathy (12) Conner | 5:24.34 |
| 4. Stamps, Katie (6) Danville | 5:24.37 |
| 5. Kelton, Missy (10) Mayfield | 5:29.0 |
| 6. Dowd, Patricia (8) Fleming Co. | 5:34.75 |

400m Relay

| | |
|--------------------|-------|
| 1. Franklin County | 49.83 |
| 2. Lloyd Memorial | 51.14 |
| 3. Logan County | 51.32 |
| 4. Danville | 51.32 |
| 5. Union County | 52.20 |
| 6. Marion County | 52.38 |

800m Relay

| | |
|----------------------|---------|
| 1. Franklin County | 1:45.34 |
| 2. Harrison County | 1:46.20 |
| 3. Danville | 1:46.27 |
| 4. Logan County | 1:47.62 |
| 5. Washington County | 1:48.12 |
| 6. Paducah Tilghman | 1:48.15 |

3200m Run

| | |
|-----------------------------------|----------|
| 1. Rankin, Susan (9) Danville | 11:41.94 |
| 2. Stamps, Katie (6) Danville | 11:52.57 |
| 3. Plank, Kathy (12) Conner | 11:59.84 |
| 4. Boggs, Deanna (11) Whitesburg | 12:08.84 |
| 5. Dowd, Patricia (8) Fleming Co. | 12:15.14 |
| 6. Thomas, Missie (12) Union Co. | 12:19.00 |

1600m Relay

| | |
|---------------------|---------|
| 1. Harrison County | 4:06.87 |
| 2. Woodford County | 4:07.30 |
| 3. Danville | 4:08.60 |
| 4. Franklin Simpson | 4:16.85 |
| 5. Clay County | 4:18.09 |
| 6. Russell | 4:22.76 |

Shot Put

| | |
|-------------------------------------|-------------|
| 1. Clements, Pam (10) Danville | 35' 10 1/4" |
| 2. Sanning, Tina (11) Dixie Hgt. | 35' 7 1/2" |
| 3. Bunch, Gala (12) Barren Co. | 35' 6 1/2" |
| 4. Clay, Monikha (11) Franklin Co. | 34' 5" |
| 5. Magrane, Joannie (11) Rowan Co. | 33' 9" |
| 6. Pige, Regina (10) Franklin Simp. | 33' 1" |

Discuss

| | |
|---------------------------------------|---------|
| 1. Magrane, Joannie (11) Rowan Co. | 120' 8" |
| 2. Magrane, Julie (9) Rowan Co. | 118' 7" |
| 3. Pace, Marlissa (10) Paducah Tilgh. | 115' 8" |
| 4. Bunch, Gala (12) Barren Co. | 112' 2" |
| 5. Clay, Monikha (11) Franklin Co. | 109' 1" |
| 6. Asher, Jamie (11) Newport | 107' 7" |

High Jump

| | |
|-------------------------------------|--------|
| 1. Young, Megan (10) Montgomery Co. | 5' 4" |
| 2. Burton, Beverly (8) Warren East | 5' 2" |
| 3. Steinhauer, Jill (11) Boyle Co. | 5' 2" |
| 4. Youngs, Patty (12) Webster Co. | 5' 2" |
| 5. Crew, Violet (11) Russell County | 5' 0" |
| 6. Barney, Jerri (11) Russell | 4' 10" |

Long Jump

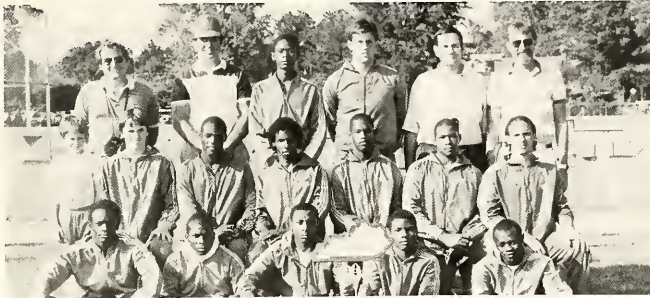
| | |
|--------------------------------------|-------------|
| 1. Schimmoeiler, Chris (10) Woodford | 17' 2 1/4" |
| 2. Patterson, Angie (12) Scott co. | 16' 10" |
| 3. Combs, Brigett (12) Whitesburg | 16' 2" |
| 4. Offutt, Arden (12) Boyle Co. | 16' 0" |
| 5. Grimes, Marice (10) Calloway Co. | 15' 11 1/4" |
| 6. Taylor, Pam (12) Russell Co. | 15' 9 1/4" |

TOTAL POINTS

| | |
|--------------------|-------|
| Danville | 85 |
| Franklin County | 54 |
| Harrison County | 38 |
| Woodford County | 36 |
| Whitesburg | 31 |
| Franklin-Simpson | 29 |
| Conner | 22 |
| Rowan County | 20 |
| Lloyd Memorial | 18 |
| Logan County | 16 |
| Clay County | 12 |
| Barren County | 10 |
| Boyle County | 10 |
| Montgomery County | 10 |
| Calloway County | 9 1/2 |
| Warren East | 8 |
| Dixie Heights | 8 |
| Scott County | 8 |
| Paducah Tilghman | 7 |
| Union County | 7 |
| Washington County | 6 |
| Owensboro Catholic | 4 |
| Webster County | 4 |
| Fleming County | 3 |
| Russell County | 3 |
| Mayfield | 2 |
| Russell | 2 |
| Marion County | 2 |
| Newport | 1 |
| Mason County | 1 1/2 |

PADUCAH TILGHMAN HIGH SCHOOL - CLASS AA BOYS

Kentucky High School Track Meet Lexington, Kentucky-May 25, 1985



(L to R) First Row: Edward Watson, Sam Covington, Jimmy Cannon, Neil Clark, Edward Billie Williams. Second Row: Bobby Gross, Shawn Jackson, Craig Johnson, Curtis Jones, Michael Jones, Michael Stone. Third Row: Burton Brown, Lyman Brown, Larry Allen, Victor Copeland, Stacey Overlin, Steve Johnston, Augie Schiller.

100m Dash

| | |
|---------------------------------------|-------|
| 1. Jackson, Glenn (12) Franklin Co. | 10.72 |
| 2. Jackson, Shawn (12) Paducah Tilgh. | 10.76 |
| 3. Barber, Tony (12) Bowling Green | 10.95 |
| 4. Burden, Greg (11) Harrison Co. | 11.05 |
| 5. Brown, Brian (11) West Carter | 11.29 |
| 6. Gregory, Exavier (10) Knox Cent. | 11.31 |

200m Dash

| | |
|---------------------------------------|-------|
| 1. Jackson, Shawn (12) Paducah Tilgh. | 21.6 |
| 2. Watson, Ed (10) Paducah Tilgh. | 22.03 |
| 3. Jackson, Glenn (12) Franklin Co. | 22.04 |
| 4. Burden, Greg (11) Harrison Co. | 22.82 |
| 5. Thomas, Scott (12) East Hardin | 23.38 |
| 6. Brown, Brian (11) West Carter | 23.40 |

400m Dash

| | |
|---------------------------------------|---------|
| 1. Jackson, Shawn (12) Paducah Tilgh. | 48.23 |
| 2. Parrott, Tony (11) Mayfield | 48.38 |
| 3. Garrett, Tracy (12) Scott County | 50.63 |
| 4. Ossege, Doug (12) Highlands | 50.90 |
| 5. Sandlin, Tempel (12) Knott Co. | 52.58 |
| 6. Milloy, Tim (11) Meade Co. | 1:02.62 |

800m Run

| | |
|---------------------------------------|---------|
| 1. Jackson, Larry (10) Mayfield | 1:56.25 |
| 2. Ossege, Doug (12) Highlands | 1:56.47 |
| 3. Hunter, Mike (10) Highlands | 2:01.58 |
| 4. Williams, Greg (11) Paducah Tilgh. | 2:03.39 |
| 5. Burnett, Scott (11) East Carter | 2:05.12 |
| 6. Hubback, Tim (12) North Bullitt | 2:06.01 |

1600m Run

| | |
|---------------------------------------|---------|
| 1. Pawsat, Shawn (10) Highlands | 4:28.37 |
| 2. Hamilton, Paul (10) Jessamine Co. | 4:30.69 |
| 3. Clark, Neal (10) Paducah Tilgh. | 4:34.66 |
| 4. Knight, Barry (12) Calloway County | 4:34.47 |
| 5. Rafferty, David (12) Taylor County | 4:34.63 |
| 6. Daugherty, Dale (11) Marion Co. | 4:39.19 |

3200m Run

| | |
|------------------------------------|----------|
| 1. Hamilton, Paul (10) Jessamine | 9:54.03 |
| 2. Logan, Glenn (12) Rowan Co. | 9:59.67 |
| 3. Herald, Jimmy (10) Warren East | 10:02.41 |
| 4. Pawsat, Shawn (10) Highlands | 10:23.53 |
| 5. Daugherty, Dale (11) Marion Co. | 10:27.14 |
| 6. Taylor, Evan (10) Union Co. | 10:28.05 |

110 High Hurdles

| | |
|---------------------------------------|-------|
| 1. Roberson, Michael (12) Bowling Gr. | 14.53 |
| 2. Canady, Mark (11) Knox Central | 14.62 |
| 3. Burden, Butch (12) Woodford Co. | 15.60 |
| 4. Payne, P.J. (12) Franklin Simpson | 15.67 |
| 5. Carr, John (12) Harrison Co. | 15.89 |
| 6. Porter, Jeff (12) Russell | 16.02 |

300m Low Hurdles

| | |
|---------------------------------------|-------|
| 1. Roberson, Michael (12) Bowling Gr. | 38.48 |
| 2. Canady, Mark (11) Knox Cent. | 38.55 |
| 3. Mosley, Trey (12) Webster Co. | 39.11 |
| 4. Burden, Butch (12) Woodford Co. | 39.78 |
| 5. Porter, Jeff (12) Russell Co. | 40.09 |
| 6. Banner, Neal (10) East Hardin | 40.80 |

400m Relay

| | |
|-------------------------|-------|
| 1. Harrison County | 43.29 |
| 2. Bowling Green | 43.50 |
| 3. Scott County | 44.52 |
| 4. Mayfield | 45.22 |
| 5. Knott County Central | 45.31 |
| 6. Danville | 45.74 |

1600m Relay

| | |
|---------------------|---------|
| 1. Paducah Tilghman | 3:23.37 |
| 2. Mayfield | 3:23.75 |
| 3. Franklin County | 3:32.91 |
| 4. Harrison County | 3:32.35 |
| 5. Russell County | 3:35.13 |
| 6. Middleboro | 3:35.15 |

Shot Put

| | |
|---------------------------------------|------------|
| 1. White, Jimmy (12) Clay Co. | 50'6 1/2" |
| 2. Caudill, Micah (11) Franklin Simp. | 49'11" |
| 3. Neal, Chris (12) Mason Co. | 49'11" |
| 4. Jones, Michael (10) Paducah Tilgh. | 48'1" |
| 5. Keller, Tim (10) Cov. Catholic | 45'11 1/2" |
| 6. Cralle, Bryan (12) Elizabethtown | 42'2 1/2" |

Discuss

| | |
|---------------------------------------|---------|
| 1. Houston, Doug (11) Franklin Simp. | 143'3" |
| 2. Overlin, Stacy (10) Paducah Tilgh. | 133'3" |
| 3. Darpel, Paul (12) Cov. Catholic | 130'6" |
| 4. Woodcox, Tim (12) Taylor Co. | 127'5" |
| 5. Russell, Shawn (10) Middleboro | 126'4" |
| 6. Stephens, Dave (11) Cov. Cath. | 125'10" |

High Jump

| | |
|-------------------------------------|------|
| 1. Harrell, Matt (11) Warren East | 6'5" |
| 2. Pennington, Sean (11) Clay Co. | 6'4" |
| 3. Canady, Mark (11) Knox Central | 6'2" |
| 4. Gross, Bobby (10) Paducah Tilgh. | 6'2" |
| 5. Wilkins, Kevin (11) Franklin Co. | 6'2" |
| 6. Derine, Steve (11) Danville | 6'0" |

Pole Vault

| | |
|-----------------------------------|-------|
| 1. Clemmons, Todd (11) Barren Co. | 12'9" |
| 2. Gilbert, John (12) Clay Co. | 12'6" |
| 3. House, Charles (10) Clay Co. | 12'6" |
| 4. Goode, Mark (11) Woodford Co. | 12'0" |
| 5. Wehrung, Ben (11) Bowling Gr. | 11'6" |
| 6. Hurley, Frank (11) Bell Co. | 11'6" |

Long Jump

| | |
|-------------------------------------|------------|
| 1. Scott, Thomas (12) East Hardin | 22'3 1/4" |
| 2. Stone, Mike (11) Paducah Tilg | 22'0" |
| 3. Gregory, Exavier (10) Knox Cent. | 21'10 1/4" |
| 4. Walker, Robert (11) Harrison Co. | 21'8 1/4" |
| 5. Brown, Calvin (12) Allen Co. | 21'1" |
| 6. Wells, Tim (10) Grayson Co. | 20'7 1/2" |

Triple Jump

| | |
|--|-----------|
| 1. Roberson, Mike (12) Bowling Gr. | 48'4 1/2" |
| 2. Jones, Lecurtis (11) Paducah Tilgh. | 43'8 1/2" |
| 3. Kendrick, Lamont (12) Marion Co. | 43'6 1/2" |
| 4. Cox, Todd (11) Elizabethtown | 42'9 1/4" |
| 5. Gregory, Exavier (10) Knox Cent. | 42'8 1/2" |
| 6. Walker, Robert (11) Harrison Co. | 42'5 1/2" |

TOTAL POINTS

| | |
|--------------------|----|
| Paducah Tilghman | 88 |
| Bowling Green | 46 |
| Clay County | 32 |
| Highlands | 32 |
| Knox Central | 31 |
| Mayfield | 30 |
| Harrison County | 29 |
| Franklin County | 26 |
| Franklin-Simpson | 22 |
| Jessamine County | 18 |
| Warren East | 16 |
| Woodford County | 14 |
| East Hardin | 13 |
| Scott County | 12 |
| Barren County | 10 |
| Covington Catholic | 9 |
| Marion County | 9 |
| Rowan County | 8 |
| Mason County | 6 |
| Webster county | 6 |
| Russell County | 5 |
| Elizabethtown | 5 |
| Calloway County | 4 |
| West Carter | 3 |
| Middleboro | 3 |
| Allen County | 2 |
| Taylor County | 2 |
| Knott County | 2 |
| Danville | 2 |
| East Carter | 2 |
| Grayson County | 1 |
| Meade County | 1 |
| Bell County | 1 |
| North Bullitt | 1 |
| Union County | 1 |

EASTERN HIGH SCHOOL - CLASS AAA GIRLS

Kentucky High School Track Meet Lexington, Kentucky-May 25, 1985



(L to R) First Row: Susan Dennison, Jo Simpson, Susan Sargeant. Second Row: Deltresa Moore, Andrea Thompson, Sonia Wharton, Sheryl Smith. Coaches James Holman, Bob Thompson.

100m Low Hurdles

| | |
|---------------------------------------|-------|
| 1. Page, Lawanda (11) Central | 14.61 |
| 2. Elliott, Nicole (9) Waggener | 15.16 |
| 3. Collin, Diane (12) Warren Cent. | 15.25 |
| 4. Parr, Selena (10) Seneca | 15.27 |
| 5. Heard, Jackie (11) Pleas. Ridge Pk | 15.36 |
| 6. Arden, Jamie (11) Madison Central | 15.47 |

300m Low Hurdles

| | |
|---------------------------------------|-------|
| 1. Tyson, Celina (10) Oldham Co. | 45.11 |
| 2. Rice, Tonia (12) Doss | 45.97 |
| 3. Parr, Selena (10) Seneca | 46.63 |
| 4. Collins, Diane (12) Warren Cent. | 47.04 |
| 5. Marshall, Stephanie (10) Boyd Co. | 47.69 |
| 6. Page, Lawanda (11) Madison Central | 48.15 |

100m Dash

| | |
|---------------------------------------|-------|
| 1. Wharton, Sonia (9) Eastern | 12.12 |
| 2. Higgs, Shawn (11) Owensboro | 12.47 |
| 3. Coleman, Melissa (12) Lafayette | 12.53 |
| 4. Hulsmeyer, Nancy (10) Mercy | 12.58 |
| 5. Ridge, Laura (11) Sacred Heart | 12.60 |
| 6. Poindexter, Kim (11) Henderson Co. | 12.82 |

200m Dash

| | |
|------------------------------------|-------|
| 1. Wharton, Sonia (9) Eastern | 25.05 |
| 2. Coleman, Melissa (12) Lafayette | 25.90 |
| 3. Higgs, Shawn (11) Owensboro | 25.95 |
| 4. Ridge, Laura (11) Sacred Heart | 26.45 |
| 5. Glenn, Kim Central | 26.47 |
| 6. Robinson, Erica (10) Shelby Co. | 27.23 |

400m Dash

| | |
|------------------------------------|---------|
| 1. Smith, Sheryl (12) Eastern | 56.68 |
| 2. Hulsmeyer, Nancy (10) | 58.35 |
| 3. Coleman, Melissa (12) Lafayette | 58.38 |
| 4. Coleman, Andrea (12) Lafayette | 58.38 |
| 5. Pittman, Vonnice (12) Doss | 60.29 |
| 6. Moore, Stephanie (11) Hend. Co. | 1.01.77 |

800m Run

| | |
|--------------------------------------|---------|
| 1. Combs, Donna (11) Ballard | 2:17.24 |
| 2. Bland, Sarah (12) Shelby Co. | 2:22.96 |
| 3. Hulsmeyer, Leight (12) Mercy Acd. | 2:22.97 |
| 4. Birt, Angela (11) Atherton | 2:25.61 |
| 5. Robinson, Karen (9) Oldham Co. | 2:28.34 |
| 6. Duvall, Robyn (10) Madison Cent. | 2:29.22 |

1600m Run

| | |
|------------------------------------|---------|
| 1. Combs, Donna (11) Ballard | 4:57.37 |
| 2. Crutcher, Nancy (10) Oldham Co. | 5:18.47 |
| 3. Bland, Sarah (12) Shelby Co. | 5:19.11 |
| 4. Trimble, Melanie (10) Boyd Co. | 5:24.48 |
| 5. Birt, Angela (11) Atherton | 5:26.75 |
| 6. Frazier, Wendy (10) Henry Clay | 5:27.44 |

3200m Run

| | |
|------------------------------------|----------|
| 1. Combs, Donna (11) Ballard | 11:00.31 |
| 2. Collins, Beth (12) Lafayette | 11:47.45 |
| 3. Frazier, Wendy (10) Henry Clay | 11:52.97 |
| 4. Crutcher, Nancy (10) Oldham Co. | 12:02.03 |
| 5. Beavins, Roni (11) Southern | 12:31.84 |
| 6. Leitner, Jenny (12) Doss | 12:36.07 |

800m Relay

| | |
|------------------------|---------|
| 1. Eastern | 1:43.62 |
| 2. Owensboro | 1:44.81 |
| 3. Shelby County | 1:46.04 |
| 4. Seneca | 1:46.84 |
| 5. Central | 1:47.20 |
| 6. Pleasure Ridge Park | 1:47.87 |

1600m Relay

| | |
|---------------------|---------|
| 1. Eastern | 3:57.32 |
| 2. Mercy Academy | 4:09.39 |
| 3. Henderson County | 4:10.16 |
| 4. Central | 4:12.80 |
| 5. Notre Dame | 4:13.13 |
| 6. Marshall Co. | 4:15.40 |

Short Put

| | |
|------------------------------------|-----------|
| 1. Crawford, Tonya (12) Butler | 39'8 1/2" |
| 2. Jones, Sherry (12) Laurel Co | 39' |
| 3. Taul, Tonya (12) Ashland | 38'5 1/2" |
| 4. Goodwin, Kim (11) Wester | 36'2 1/2" |
| 5. Vaughn, Denise (12) Moore | 33'11" |
| 6. Walker, Naomi (11) Marshall Co. | 33'10" |

Discus

| | |
|--------------------------------------|---------|
| 1. Harseley, Bobbie (12) Boyd Co. | 120'11" |
| 2. Murphy, Martha (11) Boone Co. | 112'8" |
| 3. Stewart, Diane (12) Henderson Co. | 100'8" |
| 4. Tatton, Tammy (12) Holy Rosary | 100'4" |
| 5. Finley, Allison (12) Apollo | 100'3" |
| 6. Vaughn, Denise (12) Moore | 98'8" |

High Jump

| | |
|--|------|
| 1. Morrison, Lisa (9) Boone Co. | 5'4" |
| 2. Acton, Tracy (9) Owensboro | 5'4" |
| 3. Warren, Traci (12) Male (tie) | 5'2" |
| 4. Woodridge, Sandy (11) Mercy (tie) | 5'2" |
| 5. Sargent, Susan (9) Eastern | 5'2" |
| 6. Longcrace, Karla (12) Bullitt Cent. | 5'0" |

Long Jump

| | |
|----------------------------------|------------|
| 1. Tutt, Anna (9) Owensboro | 18'4 3/4" |
| 2. O'Bannon, Sheronda (10) Male | 17'1 1/2" |
| 3. Henry, Tala (11) Holmes | 17'3 1/2" |
| 4. Johnson, Ranae (10) Henderson | 16'11 1/2" |
| 5. Jones, Sherry (10) Laurel Co. | 16'3 3/4" |
| 6. Kinney, Joy (10) Pleas Rdg Pk | 16'1 1/2" |

TOTAL POINTS

| | |
|---------------------|----|
| Eastern | 62 |
| Owensboro | 48 |
| Mercy Academy | 31 |
| Ballard | 30 |
| Lafayette | 28 |
| Oldham County | 24 |
| Shelby County | 23 |
| Central | 19 |
| Boone County | 18 |
| Henderson County | 18 |
| Seneca | 18 |
| Doss | 17 |
| Boyd County | 16 |
| Male | 13 |
| Butler | 10 |
| Laurel County | 10 |
| Warren Central | 10 |
| Waggener | 8 |
| Henry Clay | 7 |
| Moore | 7 |
| Atherton | 6 |
| Ashland | 6 |
| Holmes | 6 |
| Sacred Heart | 6 |
| Pleasure Ridge Park | 6 |
| Holy Rosary | 4 |
| Western | 4 |
| Apollo | 2 |
| Madison Central | 2 |
| Marshall County | 2 |
| Notre Dame | 2 |
| Southern | 2 |
| Bullitt Central | 1 |

LAFAYETTE HIGH SCHOOL - CLASS AAA BOYS

Kentucky High School Track Meet Lexington, Kentucky-May 25, 1985



(L to R) First Row: Frederick Cotton, Derek Robinson, Russell Nally. Second Row: Chris Porter, Jerome Brown, Chris Verhoven. Third Row: Coach Hoard Barnette, Victor Johnson.

100m Dash

| | |
|------------------------------------|-------|
| 1. Robinson, Derek (12) Lafayette | 10.66 |
| 2. Long, Tony (12) Iroquois | 10.90 |
| 3. Terry, Scott (10) Henderson Co. | 10.91 |
| 4. White, William (12) Shelby Co. | 10.94 |
| 5. Brown, Jerome (11) Lafayette | 11.17 |
| 6. Bagley, Eric (11) Doss | 11.27 |

200m Dash

| | |
|------------------------------------|-------|
| 1. Robinson, Derek (12) Lafayette | 21.89 |
| 2. Taylor, Joey (12) Eastern | 22.25 |
| 3. White, William (12) Shelby Co. | 22.33 |
| 4. Richards, David (12) Holy Cross | 22.73 |
| 5. Terry, Scott (10) Henderson Co. | 22.74 |
| 6. Verhoven, Chris (11) Lafayette | 22.74 |

400m Dash

| | |
|-------------------------------------|-------|
| 1. Taylor, Joey (12) Eastern | 49.12 |
| 2. Cheatam, Donnie (11) Holmes | 49.44 |
| 3. Howell, Edgar (12) Jeffersontown | 49.94 |
| 4. Ford, Larry (9) Shelby County | 50.44 |
| 5. Price, Dexter (11) Central | 50.54 |
| 6. Burroughs, Ron (12) Owensboro | 50.61 |

800m Run

| | |
|-----------------------------------|---------|
| 1. Saunders, Derrick, Ballard | 1:55.22 |
| 2. Dean, Austin (11) Madisonville | 1:55.84 |
| 3. Sivori, Mike (12) St. Xavier | 1:57.81 |
| 4. Gilooly, Jeff (11) Holy Cross | 1:57.90 |
| 5. Nally, Russell (12) Lafayette | 1:58.72 |
| 6. Flynn, John (12) Henderson Co. | 2:00.27 |

1600m Run

| | |
|-------------------------------------|---------|
| 1. White, Barry (12) Southern | 4:17.04 |
| 2. Butler, Joe (12) St. Xavier | 4:17.37 |
| 3. Gilooly, Jeff (11) Holy Cross | 4:17.96 |
| 4. Nally, Russell (12) Lafayette | 4:18.0 |
| 5. Swail, Brian (12) Pulaski County | 4:23.06 |
| 6. Dean, Austin (11) Madisonville | 4:25.25 |

3200m Run

| | |
|----------------------------------|----------|
| 1. Grossman, Eric (11) Atherton | 9:27.16 |
| 2. Shoaf, Rob (11) Trinity | 9:28.82 |
| 3. Butler, Joe (12) St. Xavier | 9:34.41 |
| 4. White, Barry (12) Southern | 9:41.57 |
| 5. Swail, Brian (12) Pulaski Co. | 9:47.88 |
| 6. Nally, Russell (12) Lafayette | 10:03.18 |

110m High Hurdles

| | |
|-------------------------------------|-------|
| 1. Verhoven, Chris (11) Lafayette | 14.81 |
| 2. Green, Mark (12) Moore | 14.87 |
| 3. Bussell, Leon (11) Christian Co. | 14.99 |
| 4. Coffee, Terry (11) Bryan Station | 15.32 |
| 5. Roberts, Michael (11) Male | 15.40 |
| 6. Curry, Rudd (12) Madisonville | 15.50 |

300m Low Hurdles

| | |
|---------------------------------------|-------|
| 1. McCravy, Rod (11) Trinity | 38.16 |
| 2. France, Walker (12) Doss | 39.70 |
| 3. Bussell, Leon (11) Christian Co. | 39.77 |
| 4. Crawford, Michael, Madison Central | 39.86 |
| 5. Verhoven, Chris (11) Lafayette | 39.97 |
| 6. Mullins, John (12) Laurel Co. | 41.25 |

400m Relay

| | |
|--------------|-------|
| 1. Lafayette | 42.06 |
| 2. Iroquois | 42.62 |
| 3. Eastern | 42.85 |
| 4. Central | 43.03 |
| 5. Owensboro | 43.38 |
| 6. Ballard | 43.37 |

1600m Relay

| | |
|------------------|---------|
| 1. Eastern | 3:16.78 |
| 2. Lafayette | 3:22.29 |
| 3. Bryan Station | 3:23.28 |
| 4. Central | 3:23.43 |
| 5. Ballard | 3:23.46 |
| 6. Henderson Co. | 3:24.78 |

Shot Put

| | |
|--------------------------------------|------------|
| 1. Pfeiffer, Mike (12) Trinity | 57' |
| 2. Taylor, Robert (12) Shelby Co. | 53'3/4" |
| 3. Holmes, John (11) Ashland | 52'11" |
| 4. Thompson, Earnest (10) Laurel Co. | 51'10 1/2" |
| 5. Young, Jim (12) Madisonville | 51'9 1/2" |
| 6. Sidebottom, Kevin (11) St. Xavier | 51'0" |

Discus

| | |
|-------------------------------------|---------|
| 1. Thompson, Ernest (10) Laurel Co. | 155'7" |
| 2. Gregory, Scott (12) Trinity | 147'11" |
| 3. Hudak, Chris (12) St. Xavier | 144'11" |
| 4. Young, Jim (12) Madisonville | 141'6" |
| 5. Leonard, Steve (10) Davess Co. | 135'6" |
| 6. Hensley, Dennis (12) Holmes | 135'3" |

High Jump

| | |
|---|------|
| 1. Sidebottom, Kevin (11) St. Xavier | 6'9" |
| 2. Ignacik, Albert (12) Madison Cent. | 6'8" |
| 3. Porter, Desmond (10) Pleas. Rdg. Pk. | 6'6" |
| 4. Johnson, Jerry (12) Ashland | 6'4" |
| 5. Floyd, Kelly (10) Henderson Co. | 6'2" |
| 6. Curry, Russ (12) Madisonville | 6'2" |

Pole Vault

| | |
|--|-------|
| 1. Kasitz, Brian (12) Madison Central | 12'6" |
| 2. Bersandorf, Drew (12) St. Xavier | 12'8" |
| 3. McCollan, John (10) Henderson Co. | 12'0" |
| 4. Brooks, John (10) Madison Cent. (tie) | 11'6" |
| 4. Jenkins, Shane (12) Hendsr. Co. (tie) | 11'6" |
| 4. Jones, Dixon (12) St. Xavier (tie) | 11'6" |

Long Jump

| | |
|-----------------------------------|-----------|
| 1. White, William (12) Shelby Co. | 24'1/2" |
| 2. Watkins, Scott (12) Henderson | 22'3" |
| 3. Simmons, Thomas (12) Bryan St. | 21'1/4" |
| 4. Shearer, Joe (12) Bryan St. | 21'10" |
| 5. Shipley, Spence (12) Doss | 21'6 1/4" |
| 6. Bigham, Michael (10) Doss | 21'3 1/4" |

Triple Jump

| | |
|-------------------------------------|-----------|
| 1. Moore, Darrell (10) Iroquois | 45'2 1/2" |
| 2. Cobb, Therahl (12) Eastern | 44'4" |
| 3. Shipley, Spence (12) | 44'3 3/4" |
| 4. Hobbs, Tim (11) Shelby Co. | 44' 1" |
| 5. Kaufman, Monty (12) | 43'10" |
| 6. Junkor, Brian (12) Henderson Co. | 43'4 1/2" |

TOTAL POINTS

| | |
|-------------------------|--------|
| Lafayette | 60 |
| St. Xavier | 47 1/3 |
| Eastern | 42 |
| Shelby County | 36 |
| Trinity | 36 |
| Henderson County | 29 1/3 |
| Iroquois | 26 |
| Madison Central | 20 1/3 |
| Bryan Station | 20 |
| Doss | 18 |
| Madisonville | 17 |
| Laurel County | 15 |
| Central | 14 |
| Holy Cross (Louisville) | 14 |
| Southern | 14 |
| Ballard | 13 |
| Christian County | 12 |
| Ashland | 10 |
| Atherton | 10 |
| Moore | 10 |
| Holmes | 9 |
| Jeffersontown | 6 |
| Pleasure Ridge Park | 6 |
| Pulaski County | 4 |
| Owensboro | 4 |
| Male | 2 |
| Davess County | 2 |



1985 SOCCER REGIONS

REGION I

Madisonville
North Hopkins
Murray
St. Mary
University Heights

REGION II

Apollo
Daviness County
Henderson County
Owensboro
Owensboro Catholic

REGION III

East Hardin
Elizabethtown
Fort Knox
North Hardin
West Hardin

REGION IV

Ballard
Eastern
Jeffersontown
Kentucky Country Day
Oldham County
Trinity
Waggener

REGION V

Atherton
Seneca
Shelby County
St. Francis

St. Xavier
Walden
Christian Academy

REGION VI

Central, duPont Manual
Fern Creek
Male
Moore
Southern

REGION VII

DeSales
Doss
Holy Cross
Iroquois
Ninth & O
Pleasure Ridge Park
Southwest Christian

REGION VIII

Boone County
Conner
Dixie Heights
Lloyd
Newport Central Catholic
St. Henry

REGION IX

Covington Catholic
Covington Latin
Highlands
Holmes

Pendleton County
Scott

REGION X

George Rogers Clark
Menifee County
Montgomery County
Paul Blazer
Rowan County

REGION XI

Frankfort
Franklin County
Lafayette
Madison Central
Millersburg Military Institute
Sayre
Scott County
Tates Creek
Western Hills
Woodford County

REGION XII

Berea
Boyle County
Bryan Station
Danville
Garrard County
Henry Clay
Jessamine County
Lexington Catholic
Oneida Baptist Institute
St. Camillus

1985 CROSS COUNTRY REGIONS

(Continued from Page Three)

Boys Class AAA: Bryan Station, Henry Clay, Lafayette, Laurel County, Madison Central, Nelson County, Pulaski County, Tate's Creek

Girls Class AAA: Bryan Station, Henry Clay, Lafayette, Laurel County, Madison Central, Nelson County, Pulaski County, Tate's Creek

REGION VI

Manager: Robert Baldwin, Paintsville High School, Second Street, Paintsville, Kentucky 41240 (606-789-3881)

Boys Class A: Allen Central, Bath County, Buckhorn, Cordia, Dilce Combs, Elliott County, Hazard, Jackson, Jenkins, Lee County, Lewis County, Menifee County, Oneida Baptist Institute, Paintsville, Phelps, Raceland, Riverside Christian, Holy Family, Fleming-Neon

Girls Class A: Bath County, Buckhorn, Cordia, Dilce Combs, Fleming-Neon, Paintsville, Phelps, Raceland, Riverside Christian, Holy Family, Fairview

Manager: Bob Stacy, Boyd County High School, Route 2, Box 374, Ashland, Kentucky 41101 (606-928-6473)

Boys Class AA: Betsy Layne, Breathitt County, East Carter, Estill County, Johnson Central, Knott County Central, Lawrence County, Rowan County, Russell, Sheldon Clark, West Carter, Whitesburg

Girls Class AA: East Carter, Johnson Central, Knott County Central, Lawrence County, Rowan County, Russell, Sheldon Clark, Whitesburg

Boys Class AA: Boone County, Boyd County, Campbell County, George Rogers Clark, Greenup County, Holmes

Girls Class AA: Boone County, Boyd County, Campbell County, Holmes, Notre Dame



BASKETBALL CLINICS

(All clinics begin at 7:00 P.M.)

| | |
|-------|---------------------------------|
| 10/7 | Somerset HS, Somerset |
| 10/8 | Bell Co. HS, Pineville |
| 10/9 | Hazard HS, Hazard |
| 10/10 | Prestonsburg HS, Prestonsburg |
| 10/14 | Rowan Co. HS, Morehead |
| 10/15 | Ashland Comm. College, Ashland |
| 10/16 | Mason Co. HS, Maysville |
| 10/17 | Holmes HS, Covington |
| 10/21 | Apollo HS, Owensboro |
| 10/22 | Paducah Tilghman HS, Paducah |
| 10/23 | Murray HS, Murray |
| 10/24 | Hopkinsville HS, Hopkinsville |
| 10/28 | Bowling Green HS, Bowling Green |
| 10/29 | Elizabethtown HS, Elizabethtown |
| 10/30 | Durrett Educ. Ctr., Louisville |
| 10/31 | Henry Clay HS, Lexington |



1985-86 NATIONAL FEDERATION FOOTBALL RULE INTERPRETATIONS PART I

PUBLICATION CORRECTIONS

Rule Book Page 55; Case Book Page 8; Meeting Folder Page 4: Comments on 6-1-9 — Change "R" to "K" in 3rd paragraph, 4th line.

SITUATION #1: On a try for point, placekick holder K1 rises to catch the high snap. K2 is in position to kick. K1 muffs the snap, but he recovers with his knee(s): (a) on the ground; or (b) off the ground.

RULING: In (a), the ball becomes dead when K1 recovers with his knee(s) in contact with the ground. K1 may rise and catch an errant snap and the ball remains alive, if he immediately goes to his knee(s); however, after rising, the ball is dead if he recovers while his knee(s) is touching the ground. In (b), K1 may recover and advance, but the ball will become dead if he goes to his knee(s). (4-2-2a Exp.)

SITUATION #2: During the last timed down of the 2nd period, A1's pass is intercepted by B1 in B's end zone. B1 elects to run it out and B2 clips in the end zone during B1's run. After the down, A1 and A2 each commit unsportsmanlike fouls. Team A accepts the penalty for B2's clip resulting in a safety. The penalties for the two unsportsmanlike fouls are enforced from the 20-yard line putting the ball at the 50. K1 punts the ball through the end zone. Does this fulfill the requirement of an untimed down?

RULING: Yes. A free kick is a down. In this case, a free kick fulfills the requirement of having an untimed down after the penalty is accepted for a foul which occurred during the last timed down of a period. (2-6; 3-3-3a; 8-5-2c)

SITUATION #3: Team A scores a touchdown. The ball is placed on the 3-yard line and approximately in the center of the goalposts for the try. The referee declares the ball ready-for-play. Prior to the snap, Team A is assessed a 5-yard penalty for delay of game. Before the ball is again declared ready, the captain of A requests the referee to spot the ball on the left inbounds mark.

RULING: The referee will honor the request. (4-3-5; 8-3-1)

SITUATION #4: During an unsuccessful try for point, A2 holds during A1's run. What are the options for the offended team?

RULING: There are no options as such. No penalty acceptance or declination is discussed. The try has ended, and there is no replay. No penalty is enforced from the succeeding spot. (8-3-5)

SITUATION #5: A1 advances beyond the line to B's 45-yard line. B1 grabs A1's face mask in attempting the tackle. A1 subsequently fumbles at B's 40 and A2 recovers and advances to B's 20-yard line. What options does Team A have?

RULING: Team A can either accept or decline the penalty for B1's foul. If A accepts the penalty, it is enforced from the end of A1's run — where A1 fumbled. The 15-yard penalty would put the ball on B's 25-yard line. If the penalty is declined, it is A's ball on B's 20. When there is more than one running play during a down, if the penalty is accepted for a foul during a specific running play, the basic spot is the end of that run. (10-3-3)

SITUATION #6: B1 intercepts A1's pass while he is in his own end zone. B1 attempts to advance and fumbles when hit by A2. The ball bounces from the end zone to the 1-yard line and then back into the end zone. B1 falls on the loose ball in his end zone.

RULING: It is a touchback. Team possession has not been established in the field of play. In order for this to be a safety, the fumble would have to occur in the field of play rather than the end zone. (8-5-2b, 3c)

SITUATION #7: A12 and A13 enter the field of play immediately after the snap: (a) they stay near the sideline and do not influence the play; or (b) A12 blocks an opponent, but A13 does not influence the play; or (c) both A12 and A13 block opponents.

RULING: In (a), this is a nonplayer foul for illegal substitution. The 5-yard penalty is enforced from the succeeding spot. In (b), A12's fouls is illegal participation and A13's is a nonplayer, illegal substitution foul. A12's foul penalized by administering the 15-yard under the all-but-one principle and A13's is enforced from the succeeding spot. In (c), it is a multiple foul and only one of the illegal participation fouls can be penalized under the all-but-one principle. (2-9-1; 10-2-3)

SITUATION #8: Team A is leading 21-20 after scoring in the 4th period with 17 seconds remaining. While the kickoff is in flight, R1 blocks the kicker before the kicker has gone 5 yards. R2 catches the kick and returns it to K's 5. K accepts the penalty for the foul which puts the ball on R's 45-yard line. The clock is started on the ready with 4 seconds remaining. K1 kicks off again and time expires with the ball going out-of-bounds untouched at R's 15-yard line.

RULING: If R accepts the penalty for the out-of-bounds kick, K will have to rekick during an untimed down extending the 4th period. Also, if K had allowed the 4 seconds to expire without kicking, K would have been forced to kickoff during an untimed down. (3-3-3a; 9-3-3a)

SITUATION #9: Must the umpire examine each preventive knee brace to make sure it meets the requirements?

RULING: No. The coach's verification that all his players are legal equipped includes braces, pads and all required equipment. While there are many different types and styles of knee braces, the umpire need not examine them for legality, unless the coach requests such an examination. (1-5-3c, 4)

SITUATION #10: What guidelines does the official use to judge whether a back's movement before the snap is a false start or a shift?

RULING: The decision is based entirely on whether the movement simulates the start of the play or is clearly intended to cause the defense to encroach. The responsibility is directly on the player who moves to do so in a manner that is clearly not the start of a play. If the movement is not a false start, it is a shift which requires all players of A to be stationary for at least 1 second before the ball is snapped. Officials must also be aware that defensive encroachment doesn't have to occur before a false start can be charged. (2-27; 7-1-2; 7-2-5)

SITUATION #11: Quarterback A1 moves to his position near the center. A1 looks over the defense and signals the team to take their set positions. A1 then: (a) takes a step forward and places his hand under center; or (b) bends down and moves his hands forward under center.

RULING: The movement in both (a) and (b) is a shift. The ball cannot be snapped nor can motion be started for at least 1 second after A1's shift. (2-27; 7-2-5)

SITUATION #12: R1 is near one sideline on his own 10-yard line waiting for K1's high kickoff to come down. In positioning himself, he has one foot inbounds and one foot inadvertently out-of-bounds: (a) the kick crosses the plane of the sideline and is then touched by R1; or (b) R1 muffs the kick out-of-bounds and he touched the ball before it broke the plane of the sideline.

RULING: In (a), K1 has caused the kick to be out-of-bounds. It is a 5-yard penalty enforced from the previous spot if R accepts the penalty. In (b) since R1 touched the kick before it crossed the plane, R has caused it to be out-of-bounds and will have the ball at the inbounds spot. (2-3-1; 6-1-8, 9)

SITUATION #13: Placekick holder K1 rises to catch a high snap. K1 muffs the snap, catches it and then drops it to his knees.

RULING: The ball is alive since K1 did catch the snap, he may hold for a kick or again rise to run, pass, etc. (4-2-2a Exp.)

SITUATION #14: If the coach of Team A has a player request a time-out to discuss a rule interpretation can Team B also use the time-out while discussions are going on?

RULING: Yes. Also, Team A can use the time-out with one coach while the other coach is discussing the rule interpretation with the referee. If the referee is correct in his interpretation and Team A has not used up all their time-outs, he will charge them with a time-out and let them use the remaining time if there is any left. If no time is left, play is started. If Team A doesn't have a time-out remaining and the referee is correct, Team A is charged with a delay of game penalty. If the referee is wrong, he will explain to both teams and proceed as he would after any official's time-out. (3-5-3, 8; 3-6-2c)

SITUATION #15: It is 3rd and 6 from B's 40-yard line. A1 advances to B's 30 where B1 grabs his face protector in attempting the tackle. (a) A1 fumbles but A2 recovers and advances to B's 20; or (b) A1 hands off to A2 who is subsequently tackled on the 20; or (c) A1 pitches back to A2 who advances to B's 18-yard line. Where is the basic spot of enforcement if A accepts the penalty for B1's foul?

RULING: In (a) and (c) the basic spot is where A1 lost possession by his fumble or pass and this is the end of the run. In both cases the penalty would be administered from B's 30 and put the ball on the 15-yard line. In (b) the handoff to A2 did not end the run. The end of the run is where A2 was tackled. The penalty enforcement will result in the ball being placed on B's 10-yard line. A run does not end unless possession is lost by the runner either fumbling or passing. (10-3-3)

SITUATION #16: Following a down, there is a fight between A1 and B1, and: (a) none of the officials observe which player actually struck the first blow; or (b) A1 struck first and B1 retaliated; or (c) B1 struck first and A1 retaliated.

RULING: In all 3 cases, both A1 and B1 will be disqualified from further participation. In (a), no distance penalties are measured because the officials did not see the start of the fight. In (b) and (c), the penalties are enforced in the order in which the fouls occurred. (9-4-1; 10-2-4)

SITUATION #17: Replaced player A12 attempts to get off the field on Team A's side, but the ball is snapped before he gets out-of-bounds.

RULING: This is an illegal substitution foul which occurs simultaneously with the snap. If accepted, the 5-yard penalty is enforced from the previous spot. (10-4-2, 4a)



1985-86 NATIONAL FEDERATION SOCCER RULE INTERPRETATIONS

PUBLICATION CORRECTIONS

Rule Book Page 31 — Rule 12-4-4 PENALTY: Change to read "Direct free kick (Articles 1, 3, and Disqualification for 4a)."
Page 32 — Rule 12-8-4. Add the word "not" before the word "including" in the parenthesis.
Page 52 — 12-8-4 Situations A & B. In both RULINGS change the restarts from "indirect" to "direct" free kicks.

SITUATION #1: On a cold day, Player A is discovered to be wearing (a) gloves for warmth (b) gloves which in the opinion of the referee are abrasive and dangerous.

RULING: Legal in (a), illegal in (b). (4-2-1)

SITUATION #2: The official observes a foul committed by the defending team, however, he calls out to "Play on" and indicates such with the underswing motion of both arms.

RULING: Legal, if penalizing the offending team would have given the offending team and advantage. (5-3-1d)

SITUATION #3: As the officials enter the field of play, the head referee observes two opposing players swearing at each other and the referee disqualifies both from further participation in the game.

RULING: Legal. The official's jurisdiction begins when they enter the field of play.

NOTE: Both teams may play with eleven players because the ejections took place prior to the commencement of the game. (5-1-2)

SITUATION #4: During the taking of a goal kick, Number 12 of Team A continuously encroaches the penalty area prior to the ball leaving the penalty area. The referee stops play and cautions Number 12.

RULING: The official shall caution a player or coach for misconduct or unsportsmanlike conduct and notify the coach, scorer, and other official(s). (5-3-1e)

SITUATION #5: The head referee fails to signal time-out during a stoppage in play during the scoring of a goal; however, the timekeeper stops the clock in spite of protests from the visiting team coach whose team was ahead in the game 2-1.

RULING: Legal. The official timekeeper is authorized to stop the clock when signaled to do so by an official and following the scoring of goals. (6-2-3a)

SITUATION #6: A substitute for Team A is at the scorers table prior to the ball leaving the field of play, and the referee awards a throw-in to Team B. The scorer does not signal to the referee for a substitution.

RULING: The scorer shall wait until the next substituting opportunity for Team A. (6-3-2b)

SITUATION #7: When there is no stadium clock or other visible timing device available, the head referee keeps the official time on the field.

RULING: Legal. The head referee may keep the official time by mutual agreement of the opposing coaches or the state high school association. (6-2-1)

SITUATION #8: Team A shoots on goal and the expiration of time occurs (a) prior to the ball crossing the goal line, or (b) after a handball is intentionally committed by Team B inside their own penalty area.

RULING: In (a) the ball is declared dead at its location when time of the period expires and no goal is awarded. In (b) a penalty kick is awarded to Team A. (7-1-4)

SITUATION #9: After the completion of a tie game and prior to the two 10-minute overtime periods, the opposing coaches agree to conduct a penalty kick tie-breaker to determine the winner if the game remains tied after the two overtime periods.

RULING: Illegal. A tied game may only be resolved by not exceeding two overtime periods of 10 minutes each. (7-3-1)

SITUATION #10: During the taking of a penalty kick, the timekeeper fails to stop the clock, the visiting coach protests to the head referee who instructed the timekeeper to reset the clock to the time prior to the administration of the penalty kick.

RULING: Legal. The clock shall be stopped for a penalty kick. The head referee shall make decisions on any points not covered in the rules. (7-4-1, 5-3-2g)

SITUATION #11: During the kick-off the ball is kicked backwards to a teammate of the kicker who kicks it to a winger breaking down the field. The referee blows the whistle and orders a new kick-off.

RULING: Legal. On the kick-off the ball shall be played into the field of play occupied by the team opposing the kicker. (8-1-3)

SITUATION #12: On the kick-off, Player A kicks the ball which hits an opposing player and rebounds to Player A. He then passes the ball to Player B who scores a goal.

RULING: Legal. The kicker may play the ball after it has been played by another player of either team. (8-1-4)

SITUATION #13: After the kick-off by Team A, Player A plays the ball a second time before it was played by another player on either team. The referee awards Team B a direct free kick.

RULING: Illegal. An indirect free kick is awarded to the opponent at the spot of the foul. (8-1-4 Penalty)

SITUATION #14: While in the penalty area, a player from Team A uses his foot to play a ball that is just above waist high at the same time a player from Team B plays the ball by lowering his head. The head referee stopped the game for the fouls and the ball is put into play by a drop ball inside the penalty area.

RULING: Illegal. Although Rule 9-2-1d calls for a drop ball restart when simultaneous fouls of the same degree occur, the spot of the drop ball is where the ball becomes dead unless it is in the penalty area, at which time the ball shall be dropped at the nearest point outside the penalty area in the field of play. (9-2-2)

SITUATION #15: The head referee stops play and awards a direct free kick to Player B who quickly places the ball on the ground and takes the free kick scoring a goal. The head referee disallows the goal because he had not sounded his whistle to put the ball back into play.

RULING: Illegal. The goal is counted. As soon as the ball is in position to be played, without a second whistle. (9-1-3)

SITUATION #16: A serious injury occurs with Team A in possession within the penalty area of Team B. The referee suspends play for the injury and awards Team A an indirect free kick at the point where the ball was at the time play was suspended.

RULING: Legal. (9-3-1)

SITUATION #17: On a drop ball, Player A kicks the ball before it touches the ground. On the re-drop, Player A again plays the ball before it touches the ground. The official cautions Player A and restarts the game with a direct free kick.

RULING: Illegal. Play shall be restarted by a drop ball. (9-2-4 Penalty)

SITUATION #18: After awarding a direct free kick to Team A, the official fails to signal to indicate the free kick was to be a direct free kick. Player A places the ball on the ground and kicks it directly into the goal of Team B. The coach of Team B protests because the official failed to give the proper signal.

RULING: Legal. The goal counts. A goal may be scored directly from a direct free kick even if the head referee fails to give the proper signal. (10-1-3a, 5-3-1b)

SITUATION #19: During a drop ball, Player A kicks the ball directly into the goal of Team B. The referee awards a goal to Team A.

RULING: Legal. A goal may be scored directly from a drop ball. (10-1-3d)

SITUATION #20: With A1 in an offside position, A2 dribbles the ball towards the goal, takes a shot and scores.

RULING: Legal. A player shall only be penalized for an offside position if, at the moment the ball is played by a teammate, that player is, in the opinion of the official, interfering with play of an opponent or is seeking to gain an advantage by being in that position. (11-1-2)

SITUATION #21: The goalkeeper takes two steps while holding the ball, and then rolls the ball to a teammate. The ball is played back to the goalkeeper who then takes four more steps.

RULING: Legal. Once the ball has been played by another player, four additional steps may be taken. (12-7-1)

SITUATION #22: During the half-time interval Player A protests a decision made by the head referee during the first half and he uses foul language. The player was ejected and Team A was allowed to field eleven players to start the second half because the ended the first half with eleven players.

RULING: Legal. A team does not have to play a player short because the ejection came during the half-time interval. (12-8-2b, 3-1-2, 3-3-3f)

SITUATION #23: Time is extended in the first half for a penalty kick to be taken. Before the penalty kick is completed, a player is ejected and the official does not allow a replacement.

RULING: Legal. The period has been extended therefore, the first half has not ended. (12-8-2, 7-1-4)

SITUATION #24: A player from Team A gets injured in front of his bench as a player from Team B is about to enter Team A's penalty area with the ball. The trainer from Team A runs onto the field to help his injured player as play is going on. The official sees the infraction, stops play and awards an indirect free kick to Team B to be taken from where the player was injured.

RULING: Illegal. The indirect free kick must be taken from where the ball was when the official stopped the play. (13-2-2-1)

SITUATION #25: During play, Goalkeeper A and Player B fall over the end line from the penalty area extended and are both out-of-bounds. Goalkeeper A then fouls Player B by grasping his legs to prevent his return to the field where the ball is still in play the ball is awarded a penalty kick to Team B.

RULING: Legal. The penalty area is extended to cover normal play which occurs over the end line. (14-1-1)

PRINTING

A Complete Printing Service

- OFFSET
- LETTERPRESS
- ART DESIGN
- TYPESETTING
- COPYING
- LETTER HEADS
- ENVELOPES
- BUSINESS CARDS
- RESUMES
- NEWSLETTERS
- BROCHURES
- CARBONLESS FORMS
- MAGAZINES
- PROGRAMS
- CONTINUOUS FORMS
- TAGS & TICKETS

EKU BY-PASS
RICHMOND, KY 40475
(606) 623-0828

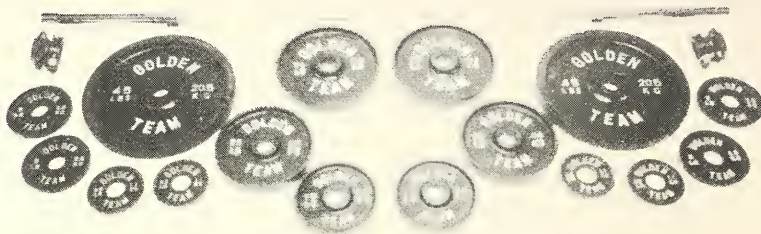
932 WINCHESTER ROAD
LEXINGTON, KY 40511
(606) 252-7182

327 CHESTNUT STREET
BEREA, KY 40403
(606) 986-9129

entuckyprinting

DISCOUNT SPORTING GOODS

#OLM-BLK Golden Team Olympic Barbells



308 Lb. Weight

4 - 2 ½ lb. plates

2 - 25 lb. plates

4 - 5 lb. plates

2 - 35 lb. plates

2 - 10 lb. plates

2 - 45 lb. plates with rubber bumpers

Olympic Bar & Collar

**LIST
\$499.95**

\$299.97

**OUR PRICE
\$349.95**

PHONE:
502-651-5143

KY WATS
1-800-862-0282

734 EAST MAIN ST.
GLASGOW, KY. 42141

STATES BORDERING KY
1-800-626-0220

Richard's
SPORT SHOP

Kentucky High School Athletic Association
P.O. Box 22280
Lexington, KY 40522

Non-Profit Org.
U.S. Postage
PAID
Richmond, KY
Permit No. 108