

9-1-1986

The Athlete, September 1986

Kentucky High School Athletic Association

Follow this and additional works at: <http://encompass.eku.edu/athlete>

Recommended Citation

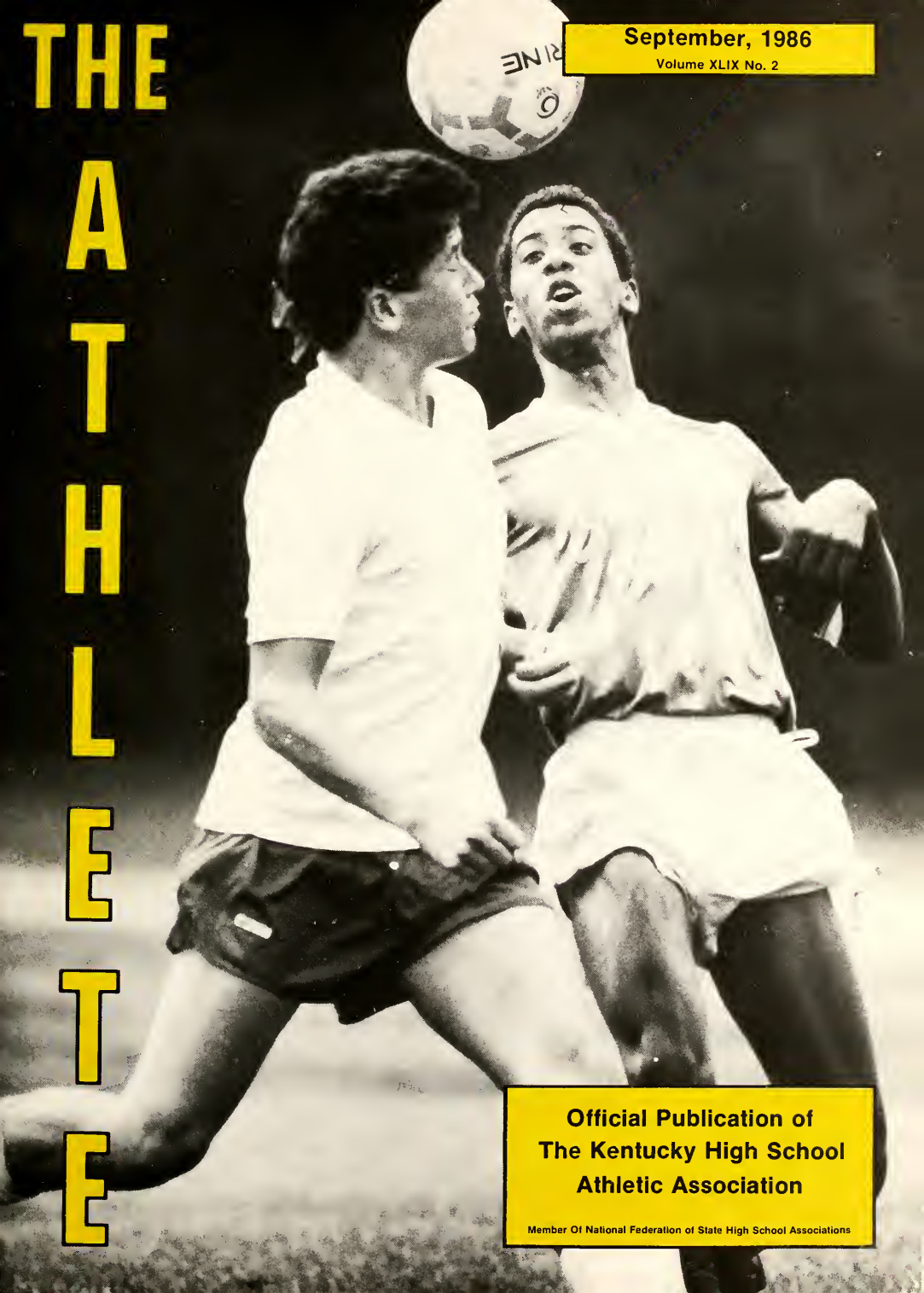
Kentucky High School Athletic Association, "The Athlete, September 1986" (1986). *The Athlete*. Book 321.
<http://encompass.eku.edu/athlete/321>

This Article is brought to you for free and open access by the Kentucky High School Athletic Association at Encompass. It has been accepted for inclusion in The Athlete by an authorized administrator of Encompass. For more information, please contact Linda.Sizemore@eku.edu.

THE A T H L E T E

September, 1986

Volume XLIX No. 2



**Official Publication of
The Kentucky High School
Athletic Association**

Member Of National Federation of State High School Associations



Target's Goals, Missions and Results

The National Federation created TARGET in 1985 in response to critical problems of alcohol and drug abuse among school-aged youth. For instance, alcohol abuse appears to be increasing at an annual rate of two percent in the general population. But among young people from 12 to 24 years of age, alcohol abuse is increasing at least twice the rate. Drug abuse, too, is an increasingly serious factor in all aspects of the lives of our youth, as each day's news sadly confirms.

The National Federation and its members believe that this chemical epidemic among students will not recede by itself. The battle requires effective education and prevention programs — programs to help students resist the peer pressure that engenders chemical abuse, programs that can take chemical abuse out of style in our society. TARGET is designed to fill those needs for National Federation members, schools and students.

Goals of the TARGET Program

- Widespread understanding among all students of the benefits of healthy living and the consequences of chemical abuse (drug and alcohol abuse);
- Creation of a skilled cadre of student leaders whose behavior will influence their peers to lead healthy, socially responsible lives.

Missions of the TARGET Program

- To promote training programs that prevent chemical abuse (drug and alcohol abuse) among school-aged youth;
- To foster a national organization of high school students committed to promoting healthy behavior among their peers;
- To offer computerized referrals to information on chemical abuse and on education and prevention, especially as it relates to school-aged youth and extracurricular activities, including high school sports;
- To provide computerized referrals to information on organizations offering treatment, intervention, or specialized information on topics related to chemical abuse and prevention among school-aged youth;
- To offer National Federation members such services as printed and audiovisual materials, guidance to financial support for chemical-health programs, and consultation on chemical-health problems and issues.

TARGET can accomplish these missions because of the strength of the members of the National Federation and the strength of its new board of directors. The members' network reaching down to the local level makes TARGET more effective at delivering services to students than any other organization. The board's commitment to the growth of TARGET will make the program reach youth more quickly and effectively.

A solid foundation for the future of TARGET has been laid in the past year. Programs already are being implemented, trainers being trained, and anti-abuse workshops conducted. Literature and other materials are in development.

Results of the TARGET Program

- More than 13,136 persons have participated in various TARGET workshops. Those attending workshops were superintendents, principals, assistant principals, athletic directors, coaches, parents and student leaders.
- Corporate involvement has begun, even before the formation of the TARGET board. Eastman Kodak Company contributed \$250,000 for the early stages of the development of TARGET. Joan Kroc has contributed seed money to develop TARGET programs. Hazelden-Cork provides an annual subsidy and consultation to the National Federation TARGET program.
- TARGET's Operation Prom/Graduation booklet was distributed in March 1986. This student planning guide promoted alcohol and drug-free alternatives for two popular annual activities, proms and graduation parties. About 30,000 copies of this booklet were sent to nearly all high schools and others throughout the United States.
- Audio and video versions of a public-service announcement featuring baseball player George Brett will be aired by affiliates of the 5,000-member National Association of Broadcasters.
- National Federation members have responded admirably to the anti-abuse cause. Many state associations have developed active — and potentially very effective — programs. The Minnesota State High School League was a pioneer of state associations in Chemical Health Education and was instrumental in urging the National Federation of State High School Associations and its member associations to become involved. In Massachusetts, "Chemical Health Day" was established; a statewide chemical health league coordinator was named; and liaisons with similar associations were solidified. In Wisconsin, the state athletic/activities association is working with a television station to develop an alcohol/drug education film. Michigan and South Dakota have begun training programs, with five trainers in each state already skilled in teaching others about chemical health. And in Washington, posters and TV and radio public-service announcements were developed and distributed to heighten awareness of the efforts against drug and alcohol abuse.
- National publicity momentum has begun for the TARGET program. TARGET has generated coverage by such publications as USA Today, Kansas City (Mo.) Times, Denver (Colo.) Post, Tulsa (Okla.) Tribune, Milwaukee (Wis.) Journal, Louisville (Ky.) Courier-Journal, and many other media across the country.

Now, with the assistance of the new TARGET board of directors, the program will blossom even more quickly. The priorities for the board are accelerated anti-abuse training across the nation and further development of a computerized chemical health resource center, a reference bank of information on chemical abuse and prevention.

The computer system at the TARGET chemical health resource center will be the nation's best link to up-to-date information about the life-styles of school-aged youth, especially as it relates to extracurricular activities and high school sports. The resource-center computer system can put schools everywhere in touch with ideas and programs that work in other places.

The other priority, developing student health-promotion programs in high schools throughout America, will equip students to resist peer pressure to use or abuse harmful chemicals. The training then will help students turn peer pressure around to the positive to take abuse "out of style."

The Kentucky High School Athlete
Official Publication of the
Kentucky High School Athletic Association

VOL. XLIX NO. 2

SEPTEMBER, 1986

\$5.00 PER YEAR

KENTUCKY HIGH SCHOOL ATHLETIC ASSOCIATION
REPORT OF EXAMINATIONS OF FINANCIAL STATEMENTS
for the years ended June 30, 1986 and 1985

BALANCE SHEETS

ASSETS	<u>1986</u>	<u>1985</u>
Current assets:		
Cash	\$3,046	\$13,991
Certificates of deposit and savings accounts	499,462	620,313
Interest receivable	-0-	2,183
Prepaid insurance	6,443	5,857
TOTAL CURRENT ASSETS	<u>\$508,951</u>	<u>\$642,344</u>
Fixed assets (Note 1):		
Land	27,000	27,000
Building	209,289	209,289
Equipment	143,091	123,323
TOTAL FIXED ASSETS	<u>\$379,380</u>	<u>\$359,612</u>
	<u>\$888,331</u>	<u>\$1,001,956</u>
 LIABILITY AND FUND EQUITY		
Current assets:		
Accounts payable	\$1,440	\$4,303
Fund equity		
Reserve for fixed assets (Note 1) ..	379,380	359,612
Fund balance	507,511	638,041
TOTAL FUND EQUITY	<u>\$886,891</u>	<u>\$997,653</u>
	<u>\$888,331</u>	<u>\$1,001,956</u>

STATEMENT OF REVENUES, EXPENDITURES AND CHANGES IN FUND BALANCE

REVENUES	<u>1986</u>	<u>1985</u>
Boys' State Basketball Tournament	\$604,234	\$607,950
Girls' State Basketball Tournament	105,291	113,466
Football playoffs	49,282	50,997
Officials' dues	73,145	55,072
Other tournaments	41,214	29,960
Mid America Classic	41,055	-0-
Interest earned	38,020	59,813
Member fees and tournament programs	42,999	47,497
Advertising and publications	5,342	4,421
TOTAL REVENUES	<u>\$1,000,582</u>	<u>\$969,176</u>

EXPENDITURES

General and administrative	650,378	620,527
Boys' State Basketball Tournament	212,279	197,724
Girls' State Basketball Tournament	83,480	87,445
Track	40,808	43,377
Mid America Classic	39,852	-0-
Football playoffs	32,539	27,184
Tennis	12,189	12,667
Cross Country	10,027	9,999
Golf	8,938	8,883
Baseball	9,762	8,432
Swimming	7,274	8,014
Softball	7,886	7,573
Wrestling	6,758	3,960
Volleyball	3,838	3,887
Soccer	5,104	2,102
TOTAL EXPENDITURES	<u>\$1,131,112</u>	<u>\$1,041,773</u>
Excess Expenditures over Revenues	(130,530)	(72,597)
Fund balance, beginning of year	638,041	710,638
Fund balance, end of year	<u>\$507,511</u>	<u>\$638,041</u>

RETIREMENT TRUST FUND

ASSETS	<u>1986</u>	<u>1985</u>
Current assets:		
Cash	\$4,462	\$8,144
Certificates of deposit and savings accounts	115,000	105,000
Accrued interest receivable	450	450
FUND BALANCE	<u>\$119,912</u>	<u>\$113,594</u>

RETIREMENT TRUST FUND STATEMENT OF REVENUES, EXPENDITURES AND CHANGES IN FUND BALANCE

REVENUES	<u>1986</u>	<u>1985</u>
Interest	\$9,571	\$11,149
EXPENDITURES		
Retirement payments	3,253	3,190
Excess Revenues over Expenditures	6,318	7,959
Fund balance, beginning of year	113,594	105,635
Fund balance, end of year	<u>\$119,912</u>	<u>\$113,594</u>

SEPTEMBER, 1986 VOL. XLIX, NO. 2

Published monthly, except June and July, by the Kentucky High School Athletic Association, Office of Publication, 560 E. Cooper Dr., P.O. Box 22280, Lexington, KY 40522.

Third class postage paid at Richmond, Kentucky Acceptance for mailing at special rate of postage provided for in Section 1103. Act of October 3, 1917, authorized May 3, 1926. Publication No. 293080.

Please send notice of undelivered copies on form 3579 to: K.H.S.A.A., P.O. Box 22280, Lexington, Kentucky 40522.

Editor **TOM MILLS**
Assistant Editor **ANNE WESLEY MAYS**
Assistant Editor **BRIGID L. DeVRIES**
Assistant Editor **LOUIS STOUT**
Assistant Editor **BILLY V. WISE**
Assistant Editor **JULIAN TACKETT**
 Lexington, Kentucky

BOARD OF CONTROL

President - Chester Turner (1983-1987) Fort Thomas,
 Vice-President - Frank Welch (1984-1988) Belfry,
 Directors - Tom Buchanan (1985-1989) Eddyville, Sam
 Chandler (1986-1990) Shelbyville, Charles Miller (1986-
 1990) Louisville, Tony Olinger (1984-1989) Lexington,
 Grant Talbott (1984-1988) Owensboro, Ken Tippett (1985-
 1989) Versailles, David Webb (1983-1987) Brownsville,
 Charlie Wilson (1984-1988) Hyden, State Department of
 Education - Lloyd Redman, Louisville.

Subscription Rate \$5.00 per year

Cover Photo by Charles Bertram and courtesy of the Lexington Herald Leader



SWIMMING COMMITTEE MINUTES

The Swimming Committee met on Thursday, August 28, at the K.H.S.A.A. Office in Lexington. Assistant Commissioner Brigid L. DeVries called the meeting to order at 1:30 p.m. Committee members present included Tim Cahill, Joel Cyganwicz, Steve Busch, Tom Ross and Jack Thompson.

The first item on the agenda was the selection of the regional sites. The managers and sites are as follows: Central Kentucky Region - Tim Cahill, Model High School, Richmond; Jefferson County Region - Jack Thompson, Crescent Hill, Louisville; Western Kentucky Region - Tom Ross, Bowling Green; Northern Kentucky Region - Dave Webb, Scott High School, Covington. The committee discussed the regional information sheets and made some minor changes. The Regional entry date is February 2, 1987. It was suggested that the admission price to all Regional Meets be left up to the Regional Managers.

The next item for discussion was the 1986-87 State Swim Meet site. The 1986-87 meet will be held at Eastern Kentucky University in Richmond on February 27 & 28, 1987. The time schedule will be similar to the 1986 meet. All diving will be scheduled on Friday, February 27, with the swimming preliminaries and finals on Saturday, February 28.

The admission price was discussed and will be raised in order to try to meet the cost of the meet. It was announced that there would be concession stands open during all

sessions. Open warm-ups will be 4:00-5:30 p.m. and 7:30-9:00 p.m. during the warm-up for boys' and girls' diving on Friday evening. It was also discussed that a scratch box be available at the time and place that the team packets are picked up. It was decided that once again one diving judge will be selected from each region and three judges selected at large.

The committee then discussed the National Federation Rule Changes for the 1986-87 school year. There was a short discussion on the Swimming Section of the K.H.S.A.A. Constitution and By-Laws. No changes were made.

Miscellaneous items included a brief discussion given by Tim Cahill on the Bluegrass State Games. Also a committee was formed to study the possibility of honoring the outstanding boys and girls coach of the year.

There being no further business, the meeting was adjourned.



VOLLEYBALL COMMITTEE MINUTES

The Volleyball Committee met at the Kentucky High School Athletic Association Office in Lexington, Kentucky, on Tuesday, August 12, 1986. The meeting was called to order at 10:00 A.M. by Brigid L. DeVries, Assistant Commissioner. Committee members present included John Bancroft, Mike McDaniel, Margi McKenna, Sally Meng, Joan Mitchell and John Smith.

The first item on the agenda was a discussion of regional tournament and sites. Ms. DeVries advised the Committee of the changes in the teams in each region. The same regional sites as last year were suggested. The Committee discussed the items on the Regional Information Sheet and made some minor corrections for the coming year. The double elimination format for regional play worked well this past year and will be in effect this coming year.

A discussion followed regarding the site for the 1986 State Volleyball Tournament to be held October 31 and November 1. Written requests to host the tournament were received from Fairdale High School and Southern High School in Louisville, Kentucky. John Bancroft recommended that the 1986 State Volleyball Tournament be held at Fairdale High School. The recommendation carried unanimously.

The Clinic dates for 1986 are as follows:

- August 19 - Iroquois High School, Louisville - 7:30 P.M.
- August 21 - Dixie Heights High School, Fort Mitchell - 7:30 P.M.
- August 26 - Sportsworld, Lexington - 7:00 P.M.

The Committee suggested that a change in the State Tournament format be recommended to the Board of Control. The recommendation is to bring the winner and runner-up team from each region and play a single elimination tournament in the State Tournament. If approved by the Board of Control, the change would not go into effect until the 1987-88 school year. This item will be discussed at the October Board of Control meeting.

1986 CROSS COUNTRY REGIONS

The regional sites, managers and teams are assigned to each class and are listed below. Each school listed will receive from the regional manager an information sheet and entry form to the meet.

REGION I

Manager: Willie Simpson, Providence High School, Cedar Street, Providence, Kentucky 42450 (502-667-7065)

Boys Class A: Central City, Crittenden Co., Fort Campbell, Fulton, Fulton Co., Graham, Hughes-Kirk, Lyon Co., Muhlenberg Central, Providence, Reidland, South Hopkins, St. Mary-Trigg Co., West Hopkins

Girls Class A: Central City, Crittenden Co., Fort Campbell, Fulton, Graham, Hughes-Kirk, Lyon Co., Muhlenberg Central, Providence, South Hopkins, Trigg Co., West Hopkins, Ballard Memorial

Manager: Tony Rowe, Daviess County High School, 4255 New Hartford Road, Owensboro, Kentucky 42301 (502-684-5295)

Boys Class AA: Bowling Green, Breckinridge County, Calloway County, Grayson County, Owensboro Catholic, Union County, Webster County, Franklin-Simpson

Girls Class AA: Bowling Green, Breckinridge County, Calloway County, Grayson County, Owensboro Catholic, Union County, Webster County, Franklin-Simpson

Boys Class AAA: Apollo, Christian County, Daviess County, Henderson County, Hopkinsville, Madisonville-N Hopkins, Marshall County, North Hardin, Owensboro, Warren Central, Graves County

Girls Class AAA: Apollo, Christian County, Daviess County, Henderson County, Hopkinsville, Madisonville-N Hopkins, Marshall County, North Hardin, Owensboro, Warren Central, Graves County

REGION II

Manager: Bobby Williams, West Hardin High School, Stephensburg, Kentucky 42781 (502-862-3924)

Boys Class A: Bardstown, Bethlehem, Caverna, Christian Academy, Edmonson County, Fort Knox, Glasgow, Green County, Hancock County, Hart County, Kentucky Country Day, Monroe County, St. Francis, Trinity (Whitesville), West Hardin, Trimble County

Girls Class A: Bardstown, Bethlehem, Caverna, Edmonson County, Fort Knox, Glasgow, Hancock County, Hart County, Kentucky Country Day, Monroe County, St. Francis, Trimble County, Trinity (Whitesville), West Hardin, South West Christian

Boys Class AA: Barren County, East Hardin, Elizabethtown, LaRue County, Meade County, North Bullitt, Washington County

Girls Class AA: Barren County, East Hardin, Elizabethtown, LaRue County, Meade County, North Bullitt, Washington County

Manager: Bro. Borgia, St. Xavier High School, 1609 Poplar Level Rd., Louisville, Ky. 40217 (502-637-4712)

Boys Class AAA: Atherton, Butler, Central, duPont Manual, Iroquois, Male, Shawnee, St. Xavier, Shelby Co.
Girls Class AAA: Atherton, Butler, Central, duPont Manual, Iroquois, Male, Presentation Academy, Sacred Heart Academy, Shawnee, Shelby Co.

REGION III

Boys Class A: Bellevue, Bishop Brossart, Covington Latin, Dayton, Ludlow, Newport Central Catholic, Silver Grove, St. Henry, Walton-Verona, Holy Cross

Girls Class A: Bellevue, Bishop Brossart, Dayton, Ludlow, Newport Central Catholic, Silver Grove, St. Henry, Walton-Verona, Holy Cross

Boys Class AA: Conner, Covington Catholic, Dixie Heights, Highlands, Lloyd Memorial, Pendleton Co., Scott, Simon-Kenton

Girls Class AA: Conner, Dixie Heights, Highlands, Lloyd Memorial, Pendleton Co., Scott, Simon-Kenton

Manager: Rich Rostel, Trinity High School, 4011 Shelbyville Rd., Louisville, Ky. 40207 (502-895-9427)

Boys Class AAA: Ballard, Eastern, Fern Creek, Jeffersontown, Moore, Oldham Co., Seneca, Trinity (Louisville), Waggener

Girls Class AAA: Assumption, Ballard, Eastern, Fern Creek, Moore, Oldham Co., Seneca

REGION IV

Manager: Frank Miklavcic, Frankfort High School, 328 Shelby St., Frankfort, Ky 40601 (502-223-8030)

Boys Class A: Anderson Co., Augusta, Carroll Co., Frankfort, Gallatin Co., Grant Co., Lexington Catholic, Maysville, Owen Co., Spencer Co., Williamstown, Living Waters

Girls Class A: Anderson Co., Augusta, Carroll Co., Frankfort, Gallatin Co., Grant Co., Lexington Catholic, Owen County, Spencer Co., Williamstown, Living Waters

Boys Class AA: Bourbon Co., Fleming Co., Franklin Co., Harrison Co., Jessamine Co., Mason Co., Montgomery Co., Scott Co., Western Hills, Woodford Co.

Girls Class AA: Bourbon Co., Franklin Co., Harrison Co., Jessamine Co., Montgomery Co., Scott Co., Western Hills, Woodford Co.

Manager: Russ Kline, Pleasure Ridge Park High School, 5901 Greenwood Road, Louisville, Ky. 40258 (502-454-8311)

Boys Class AAA: Bullitt Central, DeSales, Doss, Fairdale, Holy Cross, Pleasure Ridge Park, Southern, Valley, Western

Girls Class AAA: Doss, Fairdale, Holy Cross, Holy Rosary, Mercy Academy, Pleasure Ridge Park, Southern, Valley, Western

REGION V

Manager: Gordon Bocock, Pulaski Co., High School, 311 East University Drive, Somerset, Ky. 42501 (606-679-1574)

Boys Class A: Central Ky. Christian, Berea, Burgin, Garrard Co., Harlan, Harrodsburg, Kentucky School F/T Deaf, Mercer Co., Model, Monticello, Somerset, Wayne Co., Williamsburg, Evarts

Girls Class A: Central Ky. Christian, Berea, Burgin, Garrard Co., Harlan, Harrodsburg, Kentucky School F/T Deaf, Mercer Co., Model, Monticello, Somerset, Wayne Co., Williamsburg

Boys Class AA: Adair Co., Bell Co., Boyle Co., Clay Co., Danville, Knox Central, McCreary Central, Marion Co., Middlesboro, Taylor Co., Whitley Co.

Girls Class AA: Adair Co., Bell Co., Boyle Co., Clay Co., Danville, Knox Central, McCreary Central, Marion Co., Middlesboro, Taylor Co., Whitley Co.

Boys Class AAA: Bryan Station, Henry Clay, Lafayette, Laurel Co., Madison Central, Nelson Co., Pulaski Co., Tates Creek

Girls Class AAA: Bryan Station, Henry Clay, Lafayette, Laurel Co., Madison Central, Nelson Co., Pulaski Co., Tates Creek

REGION VI

Manager: Alice Meade, Coach, Russell High School, Red Devil Lane, Russell, Ky. 41169 (606-836-9658)

Boys Class A: Allen Central, Bath Co., Buckhorn, Cordia, Dilce Combs, Elliott Co., Hazard, Jackson, Jenkins, Lee County, Lewis Co., Meefee Co., Oneida Baptist, Paintsville, Phelps, Raceland, Riverside Christian, Holy Family, Fleming-Neon, Letcher

BELLEVUE - CLASS A GIRLS

Kentucky High School Track Meet

Lexington, Kentucky-May 31, 1986



Front Row (L to R): Kelly Roa, Laurie Docter, Michelle Stanfield, Fretta Strevtker. Second Row: Barbie Case, Jenny Swope, Tracy Hahn, Susan Browning. Third Row: Coach Pep Stidham, Candy Brewer, Jannice Wells.

300m Hurdles

*44 0 Alicia Bass, Fern Creek, 1982

1 Marsh, Heather (8), Oneida	45.5
2 Hairston, Alisha (11), Jenkins	47.1
3 Case, Barbie (11), Bellevue	46.22
4 Docter, Laurie (12), Bellevue	49.54
5 Ray, Michelle (10), Ballard Memorial	50.02
6 Johnson, Leslie (12), Bardstown	51.58

100m Low Hurdles

*13 86 Alicia Bass, Fern Creek, 1983

1 Woeste, Theresa (11), Bishop Brossart	15.66
2 Hairston, Alisha (11), Jenkins	15.74
3 Docter, Laurie (12), Bellevue	15.76
4 Ray, Michelle (10), Ballard Memorial	15.91
5 Bussell, Crystal (10), Nicholas County	15.92
6 Turner, Annissa (10), Berea	16.32

100m Dash

*11 7 Rhonda McManus, Central, 1971
Stephanie Hightower, Central 1976

1 Beach, Jackie (12), Frankfort	12.56
2 Marsh, Heather (8), Oneida	12.59
3 Pritchard, Maria (12), Ballard Memorial	12.79
4 Dillingham, Virgie (8), Madison	13.00
5 Kirkland, Maricath (9), Harlan	13.21
6 Docter, Laurie (12), Bellevue	13.42

200m Dash

*24 57 Sonia Warton, Eastern, 1986

1 Beach, Jackie (12), Frankfort	26.39
2 Marsh, Heather (8), Oneida	26.11
3 Pritchard, Maria (12), Ballard Memorial	26.17
4 Dillingham, Virgie (8), Madison	26.92
5 Case, Barbie (11), Bellevue	26.92
6 Anderson, Kim (12), Jenkins	27.17

400m Dash

*55 50 Adrienne Diamond, Marshall County, 1983

1 Beach, Jackie (12), Frankfort	59.15
2 Pritchard, Maria (12), Ballard Memorial	59.60
3 Portland, Jackie (12), St. Henry	60.66
4 Simms, Darrelle (11), Harlan	62.09
5 Elliott, Tobeika (12), Russellville	63.92
6 Waller, Julie (11), Fairview	63.98

800m Run

*2 16 03 Pam Raglin, Bourbon Co., 1963

1 Hall, Marcia (12), Providence	2.19.96
2 Sams, Katie (11), Ky. Country Day	2.22.25
3 Winkfield, Serena (9), Frankfort	2.26.40
4 Roa, Kelly (11), Bellevue	2.27.06
5 Bryant, Melody (10), Menifee County	2.28.42
6 Estes, Sheila (11), Caverna	2.29.89

1600m Run

*4 57.37 Donna Combs, Ballard, 1985

1 Edgar, Stephanie (8), Dayton	5:20.55
2 Powell, Lasenna (7), Providence	5:29.68

3 Sams, Kate (11), Ky. Country Day	5:30.52
4 Roa, Kelly (11), Bellevue	5:32.94
5 Tingler, Dana (9), Raceland	5:43.12
6 Bowen, Kathy (9), Fairview	5:50.20

3200m Run

*11 00 31 Donna Combs, Ballard, 1985

1 Edgar, Stephanie (8), Dayton	11:43.32
2 Bewsch, Janet (10), Bishop Brossart	11:50.86
3 Tingler, Dana (9), Raceland	12:22.54
4 Belt, Candy (8), Providence	12:25.07
5 Kelly, Paula (7), Fairview	12:35.41
6 Taylor, Kim (12), Providence	12:49.77

400m Relay

*48 3 Paducah Tilghman, 1977

1 Madison	51.74
2 Bellevue	52.45
3 Harlan	52.68
4 Bishop Brossart	53.13
5 Bardstown	53.50
6 Jenkins	53.77

800m Relay

*1 41 17 Ballard, 1983

1 Bellevue	1:47.47
2 Madison	1:49.37
3 Harlan	1:49.93
4 St. Henry	1:52.06
5 Bardstown	1:52.41
6 Crittenden County	1:56.06

1600m Relay

*32 97 Ballard, 1984

1 Frankfort	4:03.5
2 Providence	4:08.19
3 Bishop Brossart	4:15.63
4 Ballard Memorial	4:20.93
5 Williamsburg	4:26.63
6 Fairview	4:28.82

Shot Put

*396" Kim Woodwin, Western, 1986

1 Turner, Hillary (12), Owen County	33'10"
2 Case, Barbie (11), Bellevue	33'3"
3 Fowler, Brenda (11), Providence	32'8"
4 Copeland, Sonya (12), Providence	32'6"
5 Warner, Sandra (), Nicholas County	31'11"
6 Knight, Melissa (), Fleming-Neon	31'11"

Discus

136'1" Deanne Patrick, Boyd County, 1976

1 Steward, Hollie (12), Paris	109'8"
2 Richardson, Shelli (10), Paris	108'7"
3 Saylor, Pam (), Harlan	106'11"
4 Fowler, Brenda (11), Providence	103'11"
5 Miller, Kathleen (11), Williamsburg	103'3"
6 Copeland, Sonya (12), Providence	94'9"

High Jump

*5'10 1/2" Robin Gard, Warren Central, 1982

1 Tucker, Terrell (9), West Hopkins	5'0"
2 Schroeder, Deann (10), Bishop Brossart	4'10"
3 Houston, Deanna (9), Ballard Memorial	4'10"
4 Gentry, Leslie (), Fairview	4'10"
5 Hall, Carla (), Nicholas County	4'10"
6 Gaiser, Colleen (12), Ludlow	4'8"

Long Jump

20'4" Lynn Graham, Fleming County, 1975

1 Marsh, Heather (8), Oneida	17'11 1/2"
2 Graves, Dede (10), Bardstown	16'4 1/2"
3 Bellew, Kellee (), Raceland	15'11 1/2"
4 Woeste, Theresa (11), Bishop Brossart	15'7 1/2"
5 Hollingsworth, Michelle (11), Harlan	15'2 1/2"
6 Tucker, Terrell (9), West Hopkins	15'1/2"

TOTAL POINTS

School	Total
Bellevue	53.00
Frankfort	46.00
Providence	46.00
Bishop Brossart	40.00
Ballard Memorial	36.00
Oneida	36.00
Madison	26.00
Harlan	26.00
Dayton	20.00
Paris	18.00
Jenkins	18.00
Kentucky County Day	14.00
Raceland	14.00
Bardstown	13.00
West Hopkins	11.00
St. Henry	10.00
Owen County	10.00
Fairview	10.00
Nicholas County	6.00
Williamsburg	4.00
Menifee County	2.00
Russellville	2.00
Crittenden County	1.00
Ludlow	1.00
Caverna	1.00
Berea	1.00
Fleming-Neon	1.00

BARDSTOWN HIGH SCHOOL - CLASS A BOYS

Kentucky High School Track Meet Lexington, Kentucky-May 31, 1986



Front Row (L to R): Raymond Harrison, Martin Kimberly. **Second Row:** Tim Stiversson, James Brewer, Tyron Gray. **Third Row:** George Moreno, Sam Liberatore, Rob Cecil, Dan Hoat. **Fourth Row:** John Johnson, Scoop Young, J.W. Mattingly.

100m Dash

*10 65 Allen Franklin, Henry Clay, 1993

1 Fomas, Lane (11), Paris	11.09
2 Harrison, Raymond (11), Bardstown	11.16
3 Green, Ron (9), Caveana	11.46
4 Young, Ray (11), Bardstown	11.51
5 Landrum, James (11), Paris	11.58
6 Hunt, Mike (12), Raceland	11.69

200m Dash

*21 33 Allen Franklin, Henry Clay, 1993

1 Fomas, Lane (11), Paris	22.20
2 Brewer, James (10), Bardstown	22.45
3 Harris, Larry (10), Paris	22.74
4 Harrison, Raymond (11), Bardstown	22.78
5 Green, Ron (11), Caveana	23.34
6 Hunt, Mike (12), Raceland	23.41

400m Dash

*47 56 Chris Dshman, DeSales, 1983

1 Powell, Terry (12), Providence	50.58
2 Combs, Phillip (12), Frankfort	51.62
3 Strange, Don (12), Dayton	52.65
4 Miller, Dennis (11), Williamsburg	52.89
5 Sublett, Marshal (10), Caveana	53.93
6 Noe, Steve (11), Dilce Combs	54.77

800m Run

*1 52 3 David Jagggers, Butler, 1972

1 Strange, Don (12), Dayton	2:01.63
2 Kuper, John (12), Bishop Brossart	2:02.00
3 Fluker, Fred (12), Harlan	2:03.10
4 Oglesby, Rhea (11), Berea	2:03.18
5 Powell, Torns (10), Providence	2:04.90
6 Belt, Keith (12), Providence	2:05.50

1600m Run

*4 13 4 Dave Buechler, St. Xavier, 1974

1 Kuper, John (12), Bishop Brossart	4:27.38
2 Cunniff, Cob (11), Berea	4:27.84
3 Fluker, Fred (12), Harlan	4:31.45
4 Manno, Mott (12), Oneida	4:33.56
5 Herbst, Jamie (12), Dayton	4:38.12
6 Belt, Keith (12), Providence	4:43.39

3200m Run

*9 10 4 John Wright, Moore, 1963

1 Cunniff, Cob (11), Berea	10:01.13
2 Manno, Mott (12), Oneida	10:02.09
3 Mack, Tom (12), Dayton	10:14.24
4 Kuper, John (12), Bishop Brossart	10:24.60
5 Tapp, James (12), Providence	10:40.02
6 Sundaram, Sn (10), Paintsville	10:43.66

110m High Hurdles

*13 89 James Triplett, Manual, 1975

1 Overstreet, Donald (11), St. Mary	14.87
2 Zachary, Derek (12), Nicholas County	15.02
3 Neat, Greg (12), Campbellsville	15.66
4 Kelsay, Steve (12), Bellevue	15.27
5 Roberts, Doug (10), Ballard Memorial	15.49
6 More, Jorge (10), Bardstown	15.52

300m Low Hurdles

*37 1 Bruce Spaulding, Union County, 1990

1 Brewer, James (10), Bardstown	38.48
2 Roberts, Doug (10), Ballard Memorial	40.12
3 Kelsay, Steve (12), Bellevue	40.48
4 Neat, Greg (12), Campbellsville	40.66
5 Coldiron, Phillip (12), Nicholas County	41.45
6 Hollins, Berry (12), Russellville	41.46

400m Relay

*42 06 Lafayette, 1985

1 Paris	44.19
2 Bardstown	44.81
3 Providence	44.86
4 Bellevue	45.14
5 Russellville	45.19
6 Nicholas County	45.35

1600m Relay

*3 18 1 Bates Creek, 1974

1 Providence	3:38.33
2 Bellevue	3:26.97
3 Ludlow	3:32.96
4 Bardstown	3:38.10
5 Jenkins	3:38.45
6 Ballard Memorial	3:40.68

Shot Put

*67 Jesse Stuart, Glasgow, 1969

1 Chumbley, Brent (10), Paris	52'8"
2 Baker, Joe (11), Harlan	49'1"
3 Pippin, Bryan (12), Frankfort	46'11"
4 Johnson, John (12), Bardstown	45'5 1/2"
5 Bennett, Jeff (12), Caveana	45'5"
6 Hall, John (10), Fleming-Neon	43'6"

Discus

*185 2' John Poehlein, Hancock Co., 1994

1 Stapleton, Darren (), Elkhorn City	151'7"
2 Willett, Robert (12) Providence	149'9"
3 Myers, Don (11), Ludlow	142'10"
4 Robinson, Ted (10), Ballard Memorial	133'9"
5 Brown, Mark (12), Ky. Country Day	133'7"
6 Discibio, Tony (12), Ludlow	120'9"

High Jump

*6 10 1/2 J. B. Brown, Fort Knox, 1954

1 Dotson, Gary (12), Nicholas County	6'6"
2 Overstreet, Don (11), St. Mary	6'4"
3 Dunham, Chuck (12), M.M.I.	6'2"
4 Liberatore, Sam (9), Bardstown	6'2"
5 Copeland, Enc (12), Providence	6'0"
6 Thomas, Jimmy (11), Harlan	5'8"

Pole Vault

*14 11 1/2 Greg Gundlach, Shelby Co., 1975

1 Veatch, Bryan (12), Bellevue	13'6"
2 Hinson, Ted (11), Berea	12'0"
3 Discibio, Tony (12), Ludlow	11'0"
4 Green, James (12), Hancock County	10'6"
5 Grim, Gray (12), Paintsville	9'6"
6 Hardin, Mark (12), Jenkins	9'6"

Long Jump

*24 1/2 William White, Shelby Co., 1985

1 Mumphrey, Marc (10), Carroll County	22'6"
2 Ferguson, Bobby (11), Bellevue	21'5 1/2"
3 Brewer, James (10), Bardstown	21'3 1/2"
4 Green, Trevant (12), Caveana	20'4 1/2"
5 Roberts, Doug (12), Ballard Memorial	20'3 1/2"
6 Carson, Rob (11), Jenkins	19'10"

Triple Jump

*49 3 Keith Richardson, Bryan Station, 1978

1 Mumphrey, Marc (10), Carroll County	44'9 1/2"
2 Willett, Robert (12), Providence	44'8"
3 Brewer, James (10), Bardstown	44'3"
4 Smith, Donald (12), Harrodsburg	43'1 1/2"
5 Timberlake, Mark (12), Oneida	42'7 1/2"
6 Thompson, Clarence (12), Farview	42'1 1/2"

TOTAL POINTS

School	Total
Bardstown	67.00
Providence	50.00
Paris	48.00
Bellevue	40.00
Berea	30.00
Dayton	24.00
Bishop Brossart	22.00
Harlan	21.00
Nicholas County	21.00
Carroll County	20.00
Ludlow	19.00
St. Mary	18.00
Ballard Memorial	17.00
Caveana	16.00
Oneida	14.00
Frankfort	14.00
Campbellsville	10.00
Elkhorn City	10.00
M.M.I.	6.00
Jenkins	4.00
Hancock County	4.00
Harrodsburg	4.00
Williamsburg	4.00
Russellville	3.00
Paintsville	3.00
Kentucky County Day	2.00
Raceland	2.00
Fleming-Neon	1.00
Farview	1.00
Dilce Combs	1.00

DANVILLE HIGH SCHOOL - CLASS AA GIRLS

Kentucky High School Track Meet Lexington, Kentucky-May 31, 1986



Front Row (L to R): Orenda Byrgess, Jennie Reigelman, Vickie Alcorn, Tina Robertson. Second Row: Terera Harris, Debbie Finke, Katie Stamps, Susan Rankin. Third Row: Keisha Tillman, Pam Clements, Laquella Mitchell, Sharon Woods, Angela Taylor.

300m Hurdles

1	Tiltman, Keisha (9), Danville	47.36
2	Messmer, Molly (12), Newport Cent Cath	47.55
3	Mason, Luwanda (9), Logan County	48.56
4	Bunton, Beverly (9), Warren East	49.07
5	VonSchoenne, Lisa (9), LaRue County	50.79
6	VonGruening, Liesel (9), Bourbon Co.	51.75

100m Low Hurdles

1	Thomas, Schoenne (9), LaRue Co	14.99
2	Tiltman, Keisha (9), Danville	15.44
3	Messmer, Molly (12), Newport Cent Cath	15.54
4	Bunton, Beverly (9), Warren East	15.85
5	Brown, Kate (10), Caldwell County	16.56
6	VonGruening, Liesel (9), Bouron Count	16.84

100m Dash

1	Rainwater, Lydawn (9), LaRue County	12.11
2	Crowe, Brenda (11), Warren East	12.64
3	Travis, Carla (11), Lloyd Memorial	12.68
4	Wilson, Michelle (10), Bullitt East	12.98
5	Davis, Yolanda (11), Fort Campbell	12.95
6	Carpenter, Amy (12), Fleming County	13.12

200m Dash

1	Rainwater, Lydawn (9), LaRue County	24.95
2	Mason, Tracy (11), Logan County	25.82
3	Crowe, Brenda (10), Warren East	26.17
4	Wilson, Michelle (10), Bullitt East	26.28
5	Custard, Mary (12), Harrison County	26.65
6	Snyder, Jackie (9), East Carter	27.25

400m Run

1	Rainwater, Lydawn (9), LaRue County	56.96
2	Custard, Mary (12), Harrison County	57.19
3	Wilson, Michelle (10), Bullitt East	59.27
4	Musgrove, Erica (8), Calloway County	60.98
5	Payne, Stacy (11), Mayfield	60.56
6	Snyder, Jackie (8), East Carter	61.07

800m Run

1	Rankin, Susan (10), Danville	2:20.95
2	Phillippi, Kelli (11), Grant County	2:27.26
3	Booker, Kristin (9), Russell	2:28.43
4	Kelton, Missie (11), Mayfield	2:26.56
5	Woods, Sharon (10), Danville	2:29.39
6	Eubanks, Wendy (12), Franklin-Simp	2:31.98

1600m Run

1	Rankin, Susan (10), Danville	5:11.10
2	Stamps, Katie (7), Danville	5:24.59
3	Phillipi, Kelli (11), Grant County	5:25.60
4	Kelton, Missy (11), Mayfield	5:29.14
5	Booker, Kristen (9), Russell	5:30.73
6	Eubanks, Wendy (12), Franklin-Simp.	5:33.86

3200m Run

1	Stamps, Katie (7), Danville	11:39.29
2	Reid, Cindy (11), Fort Campbell	11:42.96
3	Finke, Debbie (7), Danville	12:03.91
4	Dowd, Patty (8), Fleming County	12:06.41
5	Mukly, Lisa (9), East Carter	12:46.36
6	Hunter, Niesje (9), Highlands	12:48.42

400m Relay

1	Union County	50.02
2	Danville	50.66
3	Fort Knox	50.97
4	Logan County	51.64
5	Harrison County	52.50
6	Newport Central Catholic	52.27

800m Relay

1	LaRue County	1:46.47
2	Harrison County	1:47.14
3	Danville	1:47.35
4	Calloway County	1:47.36
5	Fort Campbell	1:48.58
6	Lloyd Memorial	1:51.23

1600m Relay

1	Danville	4:07.74
2	Union County	4:11.95
3	Harrison County	4:12.48
4	Newport Central Catholic	4:14.75
5	Somerset	4:15.03
6	Fort Campbell	4:21.45

Shot Put

1	Powell, Anita (12), LaRue County	38'6.5"
2	Melvin, Anette (12), Fort Knox	36'3"
3	Magrane, Joanne (12), Rowan County	35'1"
4	Penny, Stephanie (11), Anderson Co	32'6.5"
5	Wade, Susan (12), South Hopkins	32'3.5"
6	Baker, Ernestine (11), Trigg County	31'6.5"

Discus

1	Magrane, Joanne (12), Rowan County	122'5"
2	Powell, Anita (12), LaRue County	104'7"
3	Samuel, Teresa (10), Franklin-Simp	103'3"
4	Hedges, Dolly (12), Bourbon County	102'4"
5	Vinson, Becky (10), Lawrence County	101'4"
6	Clements, Pam (11), Danville	101'6"

High Jump

1	Cammack, Lauren (10), Harrison Co.	5'5"
2	Bunton, Beverly (9), Warren East	5'2"
3	Stenhauer, Jill (12), Boyle County	5'2"
4	Cammack, Shan (12), Harrison Co.	5'0"
5	Easterling, Glena (7), Russell	4'10"
6	Barney, Jerri (12), Russell	4'8"

Long Jump

1	Eskridge, Taryllyn (10), Fort Knox	17'6"
2	Mason, Tracie (11), Logan County	17'2"
3	Barney, Jerri (12), Russell	16'4 1/2"
4	Musgrave, Erica (12), Calloway Co	16'4 1/2"
5	O'Brien, Crissy (10), Highlands	16'3"
6	VonGruening, Liesel (9), Bourbon Co	15'11"

TOTAL POINTS

School	Total
Danville	89.00
LaRue County	70.00
Harrison County	40.00
Warren East	30.00
Logan County	26.00
Fort Knox	24.00
Newport Central Catholic	19.00
Union County	18.00
Russell	17.00
Rowan County	16.00
Bullitt East	14.00
Grant County	14.00
Fort Campbell	13.00
Calloway County	12.00
Mayfield	10.00
Franklin-Simp.	8.00
Lloyd Memorial	7.00
Bourbon County	7.00
Boyle County	6.00
Fleming County	5.00
Anderson County	4.00
East Carter	4.00
Highlands	3.00
Caldwell County	2.00
Lawrence County	2.00
Somerset	2.00
South Hopkins	2.00
Trigg County	1.00

BASKETBALL RULE 10-5

Last spring, the Association surveyed its member schools regarding Basketball Rule 10-5, the rule regarding bench decorum by coaches. The choice given was whether or not to petition the National Federation for permission to experiment with an alteration to the rule in some form. The response from the schools was approximately seventy-five percent in favor of requesting the experiment.

In accordance with the survey results and Board of Control wishes, Executive Assistant Billy V. Wise petitioned the National Federation requesting an experiment which would allow the Head Coach to stand or kneel in front of his/her seat to give instructions to players and then immediately return to his/her seat.

On June 6, Dick Schindler, Assistant Director of the National Federation responded to the request. Citing positive results from the rule change to 10-5 in the previous year, and the basketball committee's desire for a commitment to strict enforcement nationwide, Mr. Schindler informed the K.H.S.A.A. that their request had been denied. He also pointed out that no other state had been or would be given permission to experiment with the rule.

This information was given to the Board of Control at its regular meeting in July, and the Board expressed further concern with regard to the rule due to feedback from the schools in each members area. The Board referred the matter to the All Sports Committee who met on September 13 at the K.H.S.A.A. The committee discussed the pros and cons of a possible non-permitted deviation, and then decided that it was in the best interest of the schools, the Association, and our standing with the National Federation to enforce the rule as it is written for the 1986-87 season. The committee also voted to request a rule change or experimentation for the 1987-88 season.

PADDING REQUIREMENTS CHANGED FOR BASKETBALL BACKBOARDS

Padding on rectangular backboards must meet new specifications as a result of action at the National Federation Rules Committee Meeting. Both the bottom front and the bottom back edge of a rectangular board must be padded up a distance of 3/4 of an inch with a minimum of 1 inch thickness. The bottom and side padding must continue to meet the current 2 inch thickness requirement. Schools should examine the padding on their backboards to be sure the proper thickness is being used. Inexpensive padding kits are available through sporting goods dealers to assist in conforming to this rule. One other note, the newly approved shorter backboard is optional, NOT required as some salesmen seem to be telling member schools.

ESPN TO TELEVISION HIGH SCHOOL SPORTS SHOW

ESPN has begun televising a weekly show, "Scholastic Sports America" to focus on high school sports. The half hour program will feature highlights of current and former participants, and will air on Saturday evenings at 6:30, Sunday mornings at 10:00 a.m., and Tuesday afternoons at 5:30.

IMPORTANT NOTICE TO ALL KHSAA OFFICIALS

Those officials registering in basketball for this season prior to September 1 will be receiving your rules books from the National Federation office. Again this year, the printing of the Simplified and Illustrated book has delayed their shipment. Officials who have registered since September 1 will receive their books from the K.H.S.A.A. office as soon as they become available, as will basketball playing schools. Officials registering in wrestling will receive their rules books in the next few weeks, as will wrestling schools.

A.C.T. TEST DATES FOR 1986-87

With the implementation of NCAA Proposition 48, it is important to keep up with the test dates for the American College Testing Assessment (ACT test). For 1986-87 the schedule is as follows:

<u>Test Date</u>	<u>Regular Postmark Deadline</u>	<u>Late Deadline</u>
10/25/86	09/26/86	10/14/86
12/13/86	11/14/86	12/02/86
02/07/87	01/09/87	01/27/87
04/11/87	03/13/87	03/31/87
06/13/87	05/15/87	06/02/87

IMPORTANT DATES FOR 1986-87

The following are important dates for member schools participating in winter sports.

Sport	First Practice	First Contest Allowed	Num. Games (Tentative)	State Finals
Wrestling	Oct. 15	Dec. 1	4-23	Feb. 21
Swimming	Oct. 1	Nov. 15	15	Feb. 20/21
Basketball				
non football	Oct. 1	Nov. 15	24	Mar. 21/28
football	Oct. 15	Dec. 1	24	Mar. 21/28

NEW ASSIGNING SECRETARY FOR TENTH AND ELEVENTH REGIONS

Because of the vacancy in the position, the names of the Assigning Secretary and Training Officer for the 10th and 11th regions were left out of the Handbook. The new Assigning Secretary is Larry Boucher, 206 Pin Oak Drive, Frankfort, 40601, (502)227-9976 (W), (502)564-2250 (W). The training officer is Jerry Pickrell, 592 Merrimac Drive, Lexington, 40503, (606)223-4555 (H & W).

CORRECTION TO CROSS COUNTRY INFORMATION

The Cross Country information sent to schools contained the following errors -- Region III. Class AAA manager is Rich Rostel at Trinity High School. In the information, Barry Binkley at Dayton was listed first as the manager. Binkley is the AAA manager for Region VI. We apologize for any inconvenience which this error may have caused.

CLINIC SCHEDULE FOR 1986-87 RULES CLINICS

This is the list of K.H.S.A.A. sponsored basketball and wrestling rules clinic dates for 1986-87 school year.

BASKETBALL CLINICS

October 2	Henry County High School	7:00 P.M.	New Castle
October 6	Somerset High School	7:00 P.M.	Somerset
October 7	Bell County High School	7:00 P.M.	Pineville
October 8	Hazard High School	7:00 P.M.	Hazard
October 9	Prestonsburg High School	7:00 P.M.	Prestonsburg
October 13	Rowan County High School	7:00 P.M.	Morehead
October 14	Ashland Community College	7:00 P.M.	Ashland
October 15	Mason County High School	7:00 P.M.	Maysville
October 16	Holmes High School	7:00 P.M.	Covington
October 20	Apollo High School	7:00 P.M.	Owensboro
October 21	Paducah Tilghman High School	7:00 P.M.	Paducah
October 22	Murray High School	7:00 P.M.	Murray
October 23	Hopkinsville High School	7:00 P.M.	Hopkinsville
October 27	Bowling Green High School	7:00 P.M.	Bowling Green
October 28	Elizabethtown High School	7:00 P.M.	Elizabethtown
October 29	Durrett Education Center	7:00 P.M.	Louisville
October 30	Henry Clay High School	7:00 P.M.	Lexington

WRESTLING CLINICS

November 1	Hopkinsville High School	1:00 P.M.	Hopkinsville
November 8	Conner High School	1:00 P.M.	Hebron
November 15	Frankfort High School	1:00 P.M.	Frankfort
November 18	Seneca High School	7:00 P.M.	Louisville

ADDITIONAL PADDING REQUIRED FOR POLE VAULT LANDING PADS

Track schools which sponsor the pole vault will be interested to note that beginning in 1987, all pole vault landing pads will require front pads, extending from the main landing pad and surrounding the pole vault planting box. Rule 7-4-5 of the Track and Field Rules states that the front pad must: 1) Be a minimum of four feet deep, extending from the main landing pad towards the front edge of the planting box; 2) Have a maximum cut-out for the planting box of 36 inches, measured across the bottom of the cut-out; 3) Have the back of the cut-out placed no farther than 14 inches from the vertical plane of the top of the stopboard (end of planting box); 4) Be attached to the main landing pad or encased in a common cover with the main landing pad. Diagrams of the change are available from the Association office, and will probably be printed in next year's track rules manuals.

REMINDER TO FOOTBALL SCHOOLS

A referendum distributed to the schools in the spring passed by a vote of 118-55. The referendum stated that the first legal playing date for football was eleven weekends prior to the first round of the playoffs, and that practice for football could not begin prior to August 1. This makes the first valid playing date in 1987 August 21. Keep this in mind in making out your schedules. Please remember to inform the office as to open dates. This is also important due to the fact that the new alignment plan for football is to be implemented effective with the 1987 season.

IMPORTANT NOTICE TO K.H.S.A.A. PRINCIPALS

Over the summer, the K.H.S.A.A. mailed supplies to the member schools. These include transfer forms, game contracts, foreign exchange forms, and eligibility booklets. PLEASE DISPOSE OF ALL OLD TRANSFER FORMS, GAME CONTRACTS, ELIGIBILITY BOOKLETS, and PARTICIPATION LISTS. These forms and publications have changed considerably in the past few years, and it is important and will expedite the processing of any inquiry if you will use the current form. Please advise the K.H.S.A.A. if you run out of any form, and we will be happy to provide you with additional copies. Schools are requested to make additional copies of the student/parent eligibility booklet if you should need them.

PADDING REQUIREMENT - VOLLEYBALL STANDARD

The National Federation Volleyball Rules (3-1-3) specifies that beginning with the 1986-87 season, it will be mandatory for the standards to be padded to a minimum height of 5'6" with at least 1 inch thick, soft, flexible material (such as polyethylene foam) to incase the uprights and all tensioning devices. The rule also specifies that the front and sides of the referees platform shall be protected in the same manner. Guy cables or rigid braces shall be padded to a minimum of 5'6" in height with at least 1/2" of thick, soft, flexible material. Athletic Directors should be certain their standards meet these specifications. Ready made padding kits meeting these specifications are available from various manufacturers.

OPEN DATES FOR BASKETBALL SCHOOLS

The following are the open basketball dates for the upcoming season according to information which has been turned in to the office. If any of these dates have been filled, please notify the office by phone or in writing.

University Heights, Hopkinsville, has several open dates in December, January and February. Please contact Roy Woolum (502)886-0254.

Harrodsburg is looking for one team for the Fort Harrod Tournament, to be held December 4 through 6. Contact coach Welty, Harrodsburg, (606)734-3655.

Southern girls' team would like to play in a Christmas tournament after school lets out for Christmas on December 19. Contact Jim Watkins, A.D., (502)454-8439.

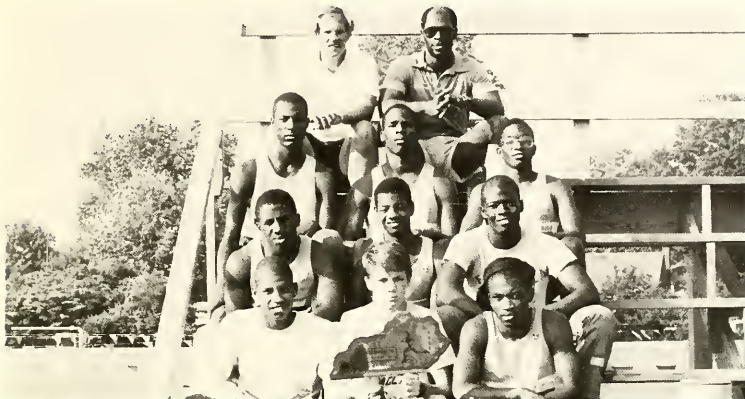
Clinton County needs girls games throughout the season. Contact Wendell Castle (606)387-5569, or 7031.

Boone County needs one team for its Recorder Classic Tournament, to be held during February 4 through 7, 1987. Contact Nell Hensley at (606)283-2795, or 331-7578.

Gallatin County needs a team for and 8 team tournament to be held December 4 through 6. Contact Jim Hinsdale, A.D., at Gallatin County.

FORT KNOX HIGH SCHOOL - CLASS AA BOYS

Kentucky High School Track Meet Lexington, Kentucky-May 31, 1986



Front Row (L to R): Roddre Massey, Bryan Thompson, Calvin Banks. Second Row: Pat Williams, Maurice Tillie, Eddie Thomas. Third Row: Darrell Harris, Leon Lany, George Eskridge. Fourth Row: Coach Dave Shuelt, Michael McCoy.

100m Dash

1 Baker, Al (12), Trigg County	10.83
2 Thomas, Eddie (11), Fort Knox	11.08
3 Walker, Robert (12), Harrison County	11.13
4 Burden, Greg (12), Harrison County	11.16
5 Brashear, Ronald (12), Elizabethtown	11.35
6 Brown, Brian (12), West Carter	11.37

200m Dash

1 Baker, Al (12), Trigg County	22.29
2 Thomas, Eddie (11), Fort Knox	22.36
3 Williams, Pat (12), Fort Knox	22.44
4 Burden, Greg (12), Harrison County	22.80
5 Higgins, Anthony (10), Harrison County	22.89
6 Allen, Mike (12), Warren East	23.12

400m Dash

1 Jackson, Larry (11), Mayfield	48.59
2 Banks, Calvin (12), Fort Knox	49.17
3 Finch, Sean (12), Todd County Central	50.60
4 Brauner, Neal (11), East Hardin	50.89
5 Patrick, Eddie (12), Harrison County	51.19
6 Howard, Joe (12), Middleboro	51.34

800m Run

1 Jackson, Larry (11), Mayfield	1:55.50
2 Parrott, Tony (12), Mayfield	1:55.93
3 Kinsey, Marlon (12), Grant County	2:01.61
4 Thomas, Harrison (12), Whitesburg	2:02.56
5 Tillie, Maurice (10), Fort Knox	2:03.45
6 Cooper, Brent (11), Rowan County	2:03.96

1600m Run

1 Moll, Jeff (11); Lexington Catholic	4:23.02
2 Pawsat, Shawn (11), Highlands	4:24.39
3 Ohs, Mike (12); LaRue County	4:26.68
4 Sword, Ron (12); Fort Campbell	4:29.41
5 Herald, Jimmy (11); Warren East	4:29.89
6 Thomas, Mark (10); Fleming County	4:35.96

3200m Run

1 Herald, Jimmy (11); Warren East	9:45.71
2 Moll, Jeff (11); Lexington Catholic	9:48.54
3 Ezell, Eric (11); Trigg County	9:54.16
4 Pawsat, Sean (11); Highlands	9:55.07
5 Thompson, Brian (9); Fort Knox	10:02.91
6 Eggleston, Jeremy (10); Rowan Co.	10:11.72

110m High Hurdles

1 Harrell, Matt (12); Warren East	14.64
2 Massey, Roddre (11); Fort Knox	14.81
3 Moss, Terry (10); Fort Campbell	14.84
4 David, Joey (11); Russell	15.47
5 Purdom, Greg (12); Mason County	15.36
6 Battershell, Steve (10); Newpt. Cent. Cath.	15.59

300m Low Hurdles

1 Massey, Roddre (11), Fort Knox	37.41
2 Harrell, Matt (12), Warren East	38.96
3 David, Joey (11), Russell	39.14
4 Stewart, Michael (12), Edmondson Co	39.53
5 Hunter, Jon (11), Danville	40.90
6 Davis, Wes (10), Russell	40.98

400m Relay

1 Fort Knox	42.54
2 Harrison County	43.04
3 Warren East	44.31
4 Newport Central Catholic	44.69
5 Boyle County	45.14
6 Fort Campbell	44.85

1600m Relay

1 Fort Knox	3:23.59
2 Mayfield	3:23.86
3 Harrison County	3:29.49
4 East Hardin	3:30.36
5 Russell	3:32.40
6 Union County	3:32.91

Shot Put

1 Caudill, Micah (12), Franklin-Simp	51'0"
2 Houston, Doug (12), Franklin-Simp	49'4"
3 Harris, Sean (12), Danville	48'3"
4 Weber, Steve (12), Newpt Cent Cath	47'10"
5 Larry, Leon (11), Fort Knox	43'3"
6 Dampier, John (12), Bourbon County	42'10"

Discus

1 McMurtry, Quinn (12), Newpt Cent Cath	157'7"
2 Houston, Doug (12), Franklin-Simp	148'10"
3 Johnson, David (11); Barren County	143'6"
4 Stone, Scott (12), Russell	138'3"
5 Baumer, Mark (12), Highlands	135'7"
6 Walls, Ronnie (11), Boyle County	127'3"

High Jump

1 Harrell, Matt (12); Warren East	6'6"
2 Kirk, Mike (12); Monroe County	6'4"
3 Porter, Ray (11), West Carter	6'0"
4 Rice, Phil (12); Lloyd Memorial	6'0"
5 Tinker, James (10); Elizabethtown	6'0"
6 Sumner, Denver (12); Anderson Co.	5'10"
7 Divine, Steve (12), Danville	5'10"

Pole Vault

1 Hanley, Norman (12), Russell	12'6"
2 Henderson, Mark (10); Calloway County	12'6"
3 Clemons, Todd (12); Barren County	12'6"
4 Pinkston, Rob (10); Highlands	12'0"
5 Brooks, John (11); East Hardin	12'0"
6 Easterberg, Von (12); Boyle County	11'6"

Long Jump

1 Walker, Robert (12), Harrison Co.	22'8 1/2"
2 Thomas, Eddie (11), Fort Knox	22'8"
3 Eskridge, George (12); Fort Knox	21'5"
4 Allen, Mike (12), Warren East	20'9 1/2"
5 McGehee, Harry (11), Trigg County	20'7 1/2"
6 Rice, Phil (12), Lloyd Memorial	20'3 1/2"

Triple Jump

1 Walker, Robert (12), Harrison Co	44'3 1/2"
2 Samuel, Cleve (12), Newport	43'2 1/2"
3 Harrell, Matt (12), Warren East	42'7 1/2"
4 Huddleston, Ken (11), Russell	41'7 1/2"
5 Tinker, James (10), Elizabethtown	41'3"
6 Davis, Wes (10), Russell	39'9 1/2"

TOTAL POINTS

School	Total
Fort Knox	89.00
Warren East	57.00
Harrison County	52.00
Mayfield	36.00
Russell	32.00
Trigg County	28.00
Franklin-Simpson	26.00
Newport Central Catholic	19.00
Highlands	18.00
Lexington Catholic	18.00
Barren County	12.00
Fort Campbell	11.00
East Hardin	10.00
Danville	8.50
Monroe County	8.00
Calloway County	8.00
Newport	8.00
Elizabethtown	6.00
Grant County	6.00
LaRue County	6.00
West Carter	6.00
Lloyd Memorial	6.00
Todd County Central	6.00
Boyle County	4.00
Edmondson County	4.00
Whitesburg	4.00
Mason County	2.00
Rowan County	2.00
Fleming County	1.00
Middleboro	1.00
Bourbon County	1.00
Union County	1.00
Anderson County	1.00

OWENSBORO AND SENECA HIGH SCHOOLS CO-CHAMPIONS - CLASS AAA GIRLS

Kentucky High School Track Meet Lexington, Kentucky-May 31, 1986



Front Row (L to R): Shawn Higgs, Angie Tutt, Shawna Moorman. Second Row: Byron Lang, April Moorman, Aretha Drake. Third Row: Don Crask, Jim Hill, Tracy Acton.



Front Row (L to R): Doris Grizzard, Shelina Parr, Shanise McCord, Jennifer Schultz. Second Row: Tresina Ezell, Albertine Sanders, Ramonda James, Andrea Colman. Third Row: Marshal Abstain, Stacy Terry.

300m Hurdles

1 Tyson, Cels (11), Oldham County	44.32
2 Parr, Shelina (11), Seneca	45.09
3 Schimmoller, Chris (11), Woodford Co	45.50
4 Marshall, Stephen (11), Boyd Co	47.70
5 Vane, Dawn (10), Warren Central	48.27
6 Howell, Karen (12), Lafayette	48.53

100m Low Hurdles

1 Page, LaWanda (12), Central	14.34
2 Vegso, Robin (12), Boyd County	14.62
3 Henry, Stacy (10), Paul Blazer	14.79
4 Schimmoller, Chris (11), Woodford Co	15.05
5 Elliott, Nicole (10), Waggener	15.07
6 Arden, Jami (12), Madison Central	NT

100m Dash

1 Higgs, Shawn (12), Owensboro	12.32
2 Coleman, Andrea (12), Seneca	12.32
3 Berry, Angie (9), Atherton	12.36
4 Washington, Robbin (10), Bryan Station	12.55
5 Jackson, Yvette (12), Franklin Co	12.70
6 Tutt, Angie (11), Owensboro	12.86

200m Dash

1 Warton, Sonia (10), Eastern	24.57
2 Tyson, Celsa (11), Oldham County	25.10
3 Tutt, Anna (10), Owensboro	25.43
4 Berry, Angie (9), Atherton	25.73
5 Washington, Robbin (10), Bryan Station	26.38
6 Morrison, Lisa (10), Boone County	26.58

400m Dash

1 Coleman, Andrea (12), Seneca	59.49
2 Moore, Stephanie (12), Henderson County	60.57
3 Burley, Erica (12), Shelby County	60.92
4 Schimmoller, Trina (11), Woodford Co	61.19
5 Whitlock, Sherrie (09), Butler	61.56
6 Cooper, B. (11), Campbell County	62.29

800m Run

1, Combs, Donna (12), Ballard	2:19.22
2, Crutcher, Nancy (11), Oldham Co	2:20.60
3, Weller, Stephanie (11), Tate's Creek	2:24.07
4, Roberts, Krista (8), Boyd County	2:26.23
5, Horn, Kerrie (8), Paul Blazer	2:27.35
6, Barnett, Jennifer (10), Daviess County	2:26.09

1600m Run

1 Combs, Donna (12), Ballard	5:04.99
2 Frazer, Wendy (11), Henry Clay	5:10.09
3 O'Nan, Cybil (08), Oldham County	5:24.81
4 Fritch, Billie (10), Waggener	5:26.02
5 Trimble, Melanie (11), Boyd County	5:27.17
6 Burns, B (12), Campbell County	5:34.69

3200m Run

1 Combs, Donna (12), Ballard	11:21.09
2 Frazer, Wendy (11), Henry Clay	11:37.06
3 Stevens, Kristi (7), Pulaski County	12:02.54
4 O'Nan, Cybil (08), Oldham County	12:09.57
5 Trimble, Melanie (11), Boyd County	12:17.36
6 Woltermann, Jenny (10), Notre Dame	12:37.29

400m Relay

1 Owensboro	49.85
2 Eastern	50.00
3 Bryan Station	50.26
4 Franklin County	50.26
5 Boyd County	50.46
6 Paul Blazer	51.52

800m Relay

1 Franklin County	1:44.78
2 Seneca	1:45.38
3 Owensboro	1:45.43
4 Bryan Station	1:46.48
5 Boyd County	1:48.59
6 Paducah Tilghman	1:51.12

1600m Relay

1 Seneca	3:59.87
2 Eastern	3:59.78
3 Henderson County	4:04.88
4 Woodford County	4:05.77
5 Shelby County	4:12.11
6 Notre Dame	4:12.59

Shot Put

1 Goodwin, Kim (12), Western	39'6"
2 Sanning, (12), Dixie Heights	37'5"
3 Jones, Sherry (12), Laurel County	37'10"
4 Bakes, Lori (10), Boyd County	35'2"
5 Oberman, Carrie (12), Pulaski County	35'2"
6 Drake, Aretha (12), Owensboro	35'10"

Discus

1 Pace, Marissa (11), Paducah Tilghman	120'7"
2 Murphy, (12), Boone County	119'4"
3 Oberman, Carrie (12), Pulaski County	111'7"
4 Wilson, Yvette (12), Ballard	105'2"
5 Roberts, Kathy (11), Lafayette	103'8"
6 Chambers, Shellie (12), Shelby County	100'1"

High Jump

1, Young, Megan (11), Montgomery County	5'6"
2 Woolldridge, Sandy (12), Mercy	5'4"
3 Morrison, Lisa (10), Boone County	5'4"
4 Sargent, Susan (10), Eastern	5'2"
5 Acton, Tracey (10), Owensboro	5'2"
6 Forman, Megan (9), Scott County	5'2"
7 Pagan, Jacqui (12), Daviess County	5'2"

Long Jump

1, O'Bannon, Sheronda (11), Male	17'11"
2 Tutt, Anna (10), Owensboro	17'6"
3 Henson, Tam (11), Clay County	17'5"
4 Vegso, Robin (12), Boyd County	16'7"
5 Doyle, Shannon (11), Oldham County	16'6"
6 Schimmoller, Chris (11), Woodford Co	16'4"

TOTAL POINTS

School	Total
Owensboro	44.00
Seneca	44.00
Oldham County	36.00
Ballard	34.00
Boyd County	32.00
Eastern	30.00
Woodford County	19.00
Franklin County	16.00
Henry Clay	16.00
Bryan Station	16.00
Boone County	15.00
Henderson County	14.00
Pulaski County	14.00
Paducah Tilghman	10.00
Central	10.00
Atherton	10.00
Montgomery County	10.00
Western	10.00
Male	10.00
Shelby County	9.00
Paul Blazer	9.00
Dixie Heights	8.00
Mercy	6.00
Tates Creek	6.00
Clay County	6.00
Waggener	6.00
Laurel County	6.00
Lafayette	3.00
Butler	2.00
Notre Dame	2.00
Warren Central	2.00
Campbell County	2.00
Daviess County	1.50
Madison Central	1.00
Scott County	0.50

PADUCAH TILGHMAN HIGH SCHOOL - CLASS AAA BOYS

Kentucky High School Track Meet

Lexington, Kentucky-May 31, 1986



Front Row (L to R): Joseph Lee, James Cannon, Greg Bullet, Bullet Williams, Edward Watson. Second Row: David Jones, Cornelius R. Clark, Michael Stone, Randy Wyatt. Third Row: Rodney Anderson, Bobby Brooks, James Johnson, Michael Jones. Fourth Row: Larry Allen, James Walker, Lyman Brown, Burton Brown. Fifth Row: Tim Gott, Steve Johnston, Augie Schiller, Jr. Pelmar.

100m Dash

1. Wyatt, Randy (8); Paducah Tilghman	10.84
2. Watson, Ed (12); Paducah Tilghman	10.94
3. Foster, Clarence (12); Jeffersonstown	10.99
4. Campbell, Doug (11); Iroquois	11.06
5. Johnson, Vic (11); Lafayette	11.15
6. Reed, Kevin (11); Bryan Station	11.24

200m Dash

1. Wyatt, Randy (8); Paducah Tilghman	21.59
2. Hart, Larry (12); Jeffersonstown	21.62
3. Reed, Kevin (11); Bryan Station	22.00
4. Gregory, Exavier (11); Knox Co. Cent.	22.08
5. Watson, Ed (12); Paducah Tilghman	22.25
6. Taylor, Tony (11); Boone County	22.32

400m Dash

1. Jenkins, Todd (12); Doss	49.08
2. Ford, Larry (10); Shelby County	49.14
3. Cheatum, Donnie (12); Holmes	49.66
4. Dickey, Troy (12); Eastern	49.73
5. Perdue, John (11); Madisonville-N. Hop	49.89
6. Hanley, Stephen (12); Franklin County	51.05

800m Run

1. Gillooly, Jeff (12); Holy Cross	1:55.00
2. Dillard, Carl (10); Christian County	1:55.62
3. Johnson, Clarence (12); Montg. Co.	1:59.92
4. Morris, Kelvin (10); Madville-N. Hop.	2:00.45
5. Chaves, Dennis (12); Knox Co. Cent.	2:01.11
6. Kelley, Don (11); Franklin County	2:02.09

1600m Run

1. Hamilton, Paul (11); Jessamine County	4:16.44
2. Grossman, Eric (12); Afterton	4:16.44
3. Gillooly, Jeff (12); Holy Cross	4:20.76
4. Clark, Neal (11); Paducah Tilghman	4:23.66
5. Dillard, Carl (10); Christian County	4:24.47
6. Coffman, Eric (12); Franklin County	4:28.95

3200m Run

1. Shaef, Rob (12); Trinity	9:16.5
2. Grossman, Eric (12); Afterton	9:37.05
3. Hamilton, Paul (11); Jessamine County	9:48.01
4. Plank, Jeff (11); Conner	9:48.16
5. Coffman, Eric (12); Franklin County	9:50.63
6. Lemser, Eric (12); Dixie Heights	10:00.18

110m High Hurdles

1. Bussell, Leon (12); Christian County	14.70
2. Canady, Mark (12); Knox Co. Cent.	14.75
3. Martin, Marty (12); Moore	14.78
4. August, Larry (10); Lafayette	15.04
5. Roberts, Michael (12); Male	15.11
6. Hodge, George (11); North Bullitt	15.25

300m Low Hurdles

1. McCravy, Rod (12); Trinity	37.69
-------------------------------	-------

2. Vornhoun, Chns (12); Lafayette	37.85
3. Jones, David (11); Paducah Tilghman	38.70
4. Bussell, Leon (12); Christian County	39.91
5. Martin, Marty (12); Moore	39.04
6. Brown, Jon (12); Brayn Station	40.43

400m Relay

1. Paducah Tilghman	42.43
2. North Hardin	43.48
3. Eastern	43.61
4. Iroquois	43.86
5. Boone County	44.13
6. Holmes	44.15

1600m Relay

1. Eastern	3:20.44
2. Doss	3:23.28
3. Henderson County	3:24.50
4. Lafayette	3:24.88
5. Paducah Tilghman	3:25.72
6. Holmes	3:28.06

Shot Put

1. Thompson, Ernest (11); Laurel County	557"
2. McHaneey, John (12); Ballard	549"
3. Jones, Mike (11); Paducah Tilghman	549 1/2"
4. Holmes, John (12); Paul Blazer	52'10 1/2"
5. Hatfield, Chris (12); Bullitt Central	507 1/2"
6. Jackson, Nate (12); Butler	498"

Discus

1. Thomas Ernest (11); Laurel County	160'3"
2. Rinehard, Mike (12); Campbell County	150'4"
3. Holmes, John (12); Paul Blazer	148'2"
4. Henry, Chris (10); Doss	145'11"
5. Leonard, Steve (11); Davess County	144'7"
6. Gilnett, Larry (); Oldham County	142'8"

High Jump

1. Floyd, Kelly (11); Henderson County	6'9"
2. Gross, Bobby Joe (11); Paducah Tilghman	6'6"
3. Porter, Desmond (12); Pleasure Rdg. Pk.	6'6"
4. Golden, John (12); Male	6'4"
5. Mills, Matt (11); Knox Co. Cent.	6'2"
6. Schweitzer, (11); Campbell County	6'0"

Pole Vault

1. Taylor, Tony (12); Iroquois	13'0"
2. Lee, Joe (12); Paducah Tilghman	12'6"
3. House, Charlie (11); Clay County	12'6"
4. Richardson, Rob (11); Madison Cent.	12'0"
5. Jones, Louis (12); Owensboro	12'0"
6. Nall, Doug (12); Covington Catholic	11'6"

Long Jump

1. Gregory, Exavier (11); Knox County	23'2"
2. Jones, Mike (12) Paducah Tilghman	23'1 1/2"
3. Porter, Desmond (12); Pleasure Rdg. Pk.	23'1 1/2"
4. Figgs, Mike (12); Scott County	22'11 1/2"
5. Cheatum, Donnie (12); Holmes	22'10 1/2"
6. Bingham, Michael (11); Doss	22'7"

Triple Jump

1. Moore, Darnell (11); Iroquois	46'9 1/4"
2. Hobbs, Tim (12); Shelby County	46'5 1/2"
3. Ward, Sterling (10); Bryan Station	44'11"
4. Gregory, Exavier (11); Knox Co. Cent.	44'2 1/2"
5. Jones, Mike (12); Paducah Tilghman	43'9"
6. Downing, Andre (12); Male	43'5 1/2"

TOTAL POINTS

School	Total
Paducah Tilghman	84.00
Knox County Central	30.00
Iroquois	28.00
Christian County	24.00
Doss	23.00
Trinity	20.00
Laurel County	20.00
Eastern	20.00
Lafayette	18.00
Henderson County	16.00
Holy Cross	16.00
Jessamine County	16.00
Shelby County	16.00
Afterton	16.00
Jeffersonstown	14.00
Bryan Station	14.00
Pleasure Ridge Park	12.00
Paul Blazer	10.00
Holmes	10.00
Campbell County	9.00
Moore	8.00
North Hardin	8.00
Ballard	8.00
Male	7.00
Montgomery County	6.00
Clay County	6.00
Madisonville-North Hopkins	6.00
Franklin County	5.00
Scott County	4.00
Madison Central	4.00
Conner	4.00
Boone County	3.00
Davess County	2.00
Owensboro	2.00
Bullitt Central	2.00
Bullitt	1.00
North Bullitt	1.00
Dixie Heights	1.00
Oldham County	1.00
Covington Catholic	1.00

1985-86 GIRLS' GOLF CHAMPIONS
ELIZABETHTOWN COUNTRY CLUB, ELIZABETHTOWN
JUNE 3-4, 1986



Individual Winner
Jenny Fuson - Corbin - 153

INDIVIDUAL SCORES

Ann Hill, Oldham County	157
Lisa Weissmueller, Lexington Catholic	158
Kim Tyrer, Franklin County	161
Joy Johnson, Lafayette	164
Anne Jones, Sacred Heart	164
Julie Esselman, Ballard	164
Samantha Hinchman, Boyd County	165
Charla Evans, Madisonville	166
Nancy Jones, Sacred Heart	166
Karen Johnson, Boone County	166

TEAM CHAMPION - SACRED HEART ACADEMY



TEAM SCORES

Sacred Heart	669
Calloway County	712
Oldham County	713
Notre Dame	734
Ballard	750
Franklin County	752
Bowling Green	797
Taylor County	798
Murray	809

1985-86 BOYS' GOLF CHAMPIONS
DOE VALLEY COUNTRY CLUB, BRANDENBURG
JUNE 3-4, 1986



Individual Winner
Toby Fields - Doss - 147

INDIVIDUAL SCORES

Johnnie Johnson, Berea	148
Brett Larimer, Marshall County	148
Harold Wallace, Greenup County	149
John Phelps, Russell County	151
Swain Beard, Franklin County	151
Tommy Rupert, Boyd County	151
Russell Smoak, Western Hills	151
Eric Wehrman, Covington Catholic	151
Tommy Beshear, Caldwell County	151
Tony Guest, Oldham County	152
Lee Smith, Henderson County	152
Byron Bennett, Taylor County	153

TEAM CHAMPION-OLDHAM COUNTY HIGH SCHOOL



(L to R): Coach Jim Randall, Tony Guest, John Karlen, Mark McGuire, Garrett Kelsey, Ernie Denham (background).

TEAM SCORES

Oldham County	625
Berea	636
Covington Catholic	640
Caldwell County	645
St. Xavier	651
Marshall County	656
DeSales	661
Greenup County	661
Trinity	672
Pleasure Ridge Park	673

1986 TENNIS CHAMPIONS



BOYS SINGLES CHAMPION
Steve Mather
Trinity



GIRLS SINGLES CHAMPION
Wendy Anderson
Henry Clay



BOYS DOUBLES CHAMPIONS
Timmer Halligan - John Meade
Trinity



GIRLS DOUBLES CHAMPION
Trisha Mahon - Sue Ann Bird
Henderson County

Continued from Page 2

The next item on the agenda was the new officials fees. Officials, both umpires and referees, will receive \$18.00 per match for regular season varsity play. Regional tournament fees are \$20.00 and State Tournament fees are \$25.00 per match.

A brief discussion followed regarding the 1986-87 National Federation Volleyball rules. The most significant change requires padding on standards, floor and wall cables and the referee's stand. Schools participating in volleyball shall have their equipment padded effective this school year.

The Constitution and By-Laws were studied and no changes were suggested in the Volleyball section.

There being no further business, the meeting was adjourned.

Continued from Page 3

Girls Class A: Bath Co., Buckhorn, Cordia, Dilce Combs, Fleming-Neon, Hazard, Lee Co., Lewis Co., Menifee Co., Oneida Baptist, Paintsville, Phelps, Raceland, Riverside Christian, Fairview, Letcher

Boys Class AA: Johnson Central, Knott Co., Estill Co., East Carter, Lawrence Co., Rowan Co., Russell, Sheldon Clark, West Carter, Whitesburg, Betsy Layne

Girls Class AA: East Carter, Johnson Central, Lawrence Co., Rowan Co., Russell, Sheldon Clark, Whitesburg

Manager: Barry Binkley, Dayton High School, 200 Jackson St., Dayton, Ky. 41074 (606-261-4357) Meet held at Thomas Moore.

Boys Class AAA: Boone Co., Boyd Co., Campbell Co., George Rogers Clark, Greenup Co., Holmes

Girls Class AAA: Boone Co., Boyd Co., Campbell Co., Holmes, Notre Dame



1986 SOCCER ALIGNMENT

**REGION I**

Manager: Roy Wollum, A.D., University Heights, 1300 Academy Dr., Box 1070, Hopkinsville, Ky. 42240 (502-886-0254)
Caldwell Co., Fort Campbell, Madisonville N.-Hopkins, Murray, St. Mary, University Heights, Paducah Tilghman, Marshall Co.

REGION II

Manager: Dale Stewart, Apollo High School, 2280 Tamarack Rd., Owensboro, Ky. 42301 (502-685-3121)
Apollo, Daviess Co., Henderson Co., Owensboro, Owensboro Catholic

REGION III

Manager: Gary Thompson, A.D., Ft. Knox High School, 17501 Missouri St., Ft. Knox, Ky. 40121 (502-624-6647)
East Hardin, Elizabethtown, Fort Knox, North Hardin, West Hardin, Bowling Green, Warren East, Warren Central

REGION IV

Manager: Jim Swart, A.D., Eastern High School, 12400 Old Shelbyville Rd., Louisville, Ky. 40243 (502-454-8243)
Ballard, Eastern, Jeffersontown, Kentucky Country Day, Oldham Co., Trinity (Louisville) Waggener

REGION V

Manager: Jay Phillips, A.D., Atherton High School, 3000 Dundee Rd., Louisville, Ky. 40205 (502-454-8732)
Atherton, Christian Academy, Seneca, Shelby Co., St. Francis, St. Xavier, Walden, Louisville Collegiate

REGION VI

Manager: Jay Levine, A.D., Iroquois High School, 4615 Taylor Blvd., Louisville, Ky. 40215 (502-454-8269)
Central, duPont Manual, Fern Creek, Male, Moore, Southern, Fairdale

REGION VII

Manager: Mike McDaniel, A.D., Male High School, 911 S. Brook St., Louisville, Ky. 40203 (502-454-8292)
DeSales, Doss, Holy Cross, Iroquois, Pleasure Ridge Park, Southwest Christian, Ninth & O

REGION VIII

Manager: Don Atterkirk, A.D., Dixie Heights High School, 3010 Dixie Hwy., Fort Mitchell Ky. 41017 (606-341-7650)
Boone Co., Conner, Brossart, Dixie Heights, Lloyd Memorial, Simon Kenton, St. Henry, Newport Central Catholic

REGION IX

Manager: Jack Kaelin, A.D., Covington Catholic High School, 1600 Dixie Hwy., Covington, Ky. 41011 (606-431-5351)
Campbell Co., Covington Latin, Covington Catholic, Highlands, Holmes, Holy Cross, Pendleton Co., Scott

REGION X

Manager: Kevin Taylor, George Rogers Clark High School, 620 Boone Ave., Winchester, Ky. 40391 (606-744-6111)
Boyd Co., George Rogers Clark, Menifee Co., Montgomery Co., Oneida Baptist Institute, Paul Blazer, Rowan Co.

REGION XI

Manager: Rick Phillips, A.D., Tates Creek High School, Centre Pkwy., Lexington, Ky. 40502 (606-272-1513)
Frankfort, Franklin Co., Lafayette, Madison Central, M.M.I., Sayre, Scott Co., Tates Creek, Western Hills, Woodford Co.

REGION XII

Manager: Jack Conte, Coach, Bryan Station High School, 1866 Edgeworth Dr., Lexington, Ky. 40505 (606-299-9212)
Berea, Boyle Co., Bryan Station, Danville, Garrard Co., Henry Clay, Jessamine Co., Lexington Catholic

Continued from Inside Front Cover

In addition, the TARGET program will serve as a unique link tying America's schools and youth to the official and unofficial network of agencies fighting drug and alcohol abuse. The National Federation is developing agreements with such entities as Federal and state alcohol and drug agencies, professional sports leagues, and private organizations with similar anti-abuse goals. Agreements will involve a variety of activities, from information-sharing to cooperation on services or prevention programs.

TARGET is being bolstered by an aggressive campaign to alert community leaders, educators, parents and students that the National Federation and its state-association members offer solutions to the national epidemic of abuse. With the assistance of experienced outside public relations counsel, the National Federation will build public awareness of the weapons available in the fight against substance abuse and chemical dependency. The National Federation will arm its members to conduct local awareness campaigns and will reinforce state and local efforts with its own nationwide umbrella program to stimulate use of TARGET. Ingredients of the promotion plan include national news coverage of major chemical-health issues, state-by-state promotion of TARGET, and a nationwide student rally against chemical abuse.



Charles Stebbins, Target Director
NATIONAL FEDERATION
OF STATE HIGH SCHOOL ASSOCIATIONS
P.O. Box 20626
Kansas City, Missouri 64195
816/464/5400

Reprinted from the National Federation News

LOWE'S

Sporting Goods

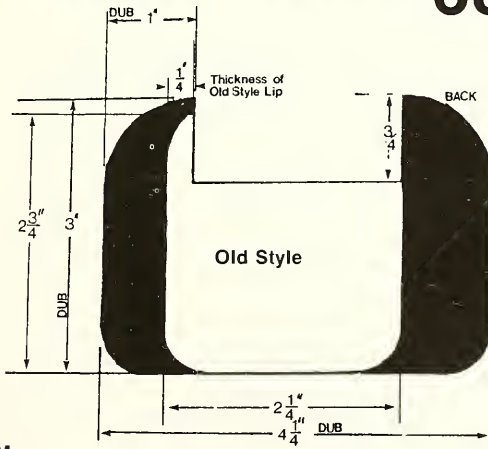
901 N. MAIN STREET
 London, KY 40741
 864-2207
 TRADEMART CENTER
 Corbin, KY 40701
 523-1700

TOLL
 FREE
 1-800-442-0132

BASKETBALL BACKBOARD

DUBSM

by BPI



PADDING

SPECIAL
 PRICE
 \$68⁹⁵



CORNERS
 PROTECT BETTER.



THICKER, DENSER PADDING
 LASTS LONGER.

DUBSM

DUB is the safest glue on padding available. And it's available from BPI. The company you can trust to bring you the finest and safest basketball equipment ever!

Insist that your backboards are protected with **DUB**. Double your protection and order **DUB**!

DUB. Double-sided safety padding. Double your protection. Install **DUB** on your boards today!

Extending the safety padding to both sides of the backboard protects your players from the bare metal frame - even when the action is behind the backboard!

NCAA & NFHS
 RULE 1 SECTION 8
 Comments page 49

Backboards shall have safety padding which covers the front & back of the backboard for the 1986 basketball season.

**NEW
 RULE**



FITS ALL BACKBOARDS.



DISCOUNT SPORTING GOODS

LEATHER BASKETBALLS

These Basketballs are **Top Collegiate Model Balls**. Each with select quality cowhide panels, Tack-Sprayed surface which produces the Rawlings famous Soft-Touch control, Deluxe Nylon-wound center and Last-Bilt construction.

LADIES



RLL

*Smaller size basketball conforms to newly adopted size for women.

*Narrow channel seams.

MENS



RSS

*Wide channel seamed basketball.
*Official size and weight.

SALE
\$39.99

PHONE
1-502-651-5143

734 EAST MAIN ST.
GLASGOW, KY. 42141

KY WATS
1-800-862-0282

STATES BORDERING KY
1-800-626-0220

Richard's
SPORT SHOP

Kentucky High School Athletic Association
P.O. Box 22280
Lexington, KY 40522

Non-Profit Org.
U.S. Postage
PAID
Richmond, KY
Permit No. 108