

3-1-1987

The Athlete, March 1987

Kentucky High School Athletic Association

Follow this and additional works at: <http://encompass.eku.edu/athlete>

Recommended Citation

Kentucky High School Athletic Association, "The Athlete, March 1987" (1987). *The Athlete*. Book 327.
<http://encompass.eku.edu/athlete/327>

This Article is brought to you for free and open access by the Kentucky High School Athletic Association at Encompass. It has been accepted for inclusion in The Athlete by an authorized administrator of Encompass. For more information, please contact Linda.Sizemore@eku.edu.

THE A T H L E T E

March, 1987

Volume XLIX No. 8



Official Publication of
The Kentucky High School
Athletic Association

Member of National Federation of State High School Associations

CHEMICAL HEALTH



Valvoline Takes Stand Against Drug Use

The Valvoline Amateur Sports Advisory Board announced a positive stand recently against illegal drug usage in amateur athletics. The Board, consisting of Olympic athletes and amateur sport coaches, issued an eight-point statement at a press conference in San Diego, California, with hopes of helping "Keep the Dream Alive" for young athletes.

Chaired by Olympic swimming gold medalist John Naber and sponsored by the Valvoline Company, the Board's collective opinion is that "Drugs Kill Dreams" and that everyone must help eliminate illegal drug use in not only the amateur athletic community, but nationwide at all levels as well.

Following is a portion of the statement.

"We the members of the Valvoline Amateur Sports Advisory Board, do hereby state that we do not, and will not, use drugs for the purpose of recreation or enhanced performance. We intend to use our positions as successful "Ambassadors of Sports" to "Keep the Dream Alive" for young athletes. We believe that to reach our goal of taking drug dependency out of Athletics the following steps must be followed:

- 1) "We reject the suggestion that the use of illegal drugs is justifiable or should be tolerated.
- 2) "We will not condone athletic events, where proof exists that the rules governing drug abuse are not being enforced.
- 3) "We will not allow an athlete on our team to abuse drugs.
- 4) "We will encourage our sport national governing bodies to initiate drug education programs, and drug testing at national level events.
- 5) "We believe that athletes, or coaches, who knowingly use illegal substances to aid their performances on the field of play, deserve severe punishment, as do those individuals who use recreational drugs.
- 6) "Those individuals who take the necessary steps to permanently rid themselves of the recreational drug abuse habit, for a period not less than 12 months, we believe that their teammates and coaches should be quick to welcome them back into the field of competitive athletics.
- 7) "We shall volunteer our time in the area of local youth drug education.
- 8) "We shall encourage all other people involved with sports to follow our example."

The declaration, signed by all Valvoline Amateur Sports Advisory Board members, is a way to establish guidelines for the betterment of amateur athletics. J.F. Boehm, president of Valvoline Oil, sees the Board's action as a concrete step in the war on drugs in American sports.

"Valvoline and Ashland Oil have long realized the importance of healthy minds and bodies for our young athletes. Drug abuse by athletes has reached severe levels in this country, and I believe the declaration by the Board is a step in the right direction," Boehm said.

Valvoline will assist the Board by providing manpower and resources to see that its goals are met. "We see the statement as a fresh start for young athletes," Boehm said. "The Board wants to impress upon the nations' youth that perseverance and dedication are the keys to reaching their goals, not drugs."

HELPING STUDENTS COPE WITH ALCOHOL AND DRUGS

Information on programs — some old, some new, all good — from the National Federation's Target programs, a chemical health service center to help students cope with alcohol and drugs.

Remove Intoxicated Driver (RID) was founded to raise public consciousness concerning the problem of drunk driving; to collect and disseminate information; to improve government systems, and to support victims of drunk drivers. A network of RID members, maintained by zip code, is ready to help victims as they interface with the justice system.

RID sponsors public forums for citizen awareness utilizing films and its own speakers bureau, as well as providing a citizen action manual, court watch materials, bumper stickers, buttons, research information, brochures, petitions and a victims' aid kit. In addition, RID maintains a national victims' hotline at (518) 372-0034.

RID sponsors four victims' aid and public awareness conferences annually around the nation and helps to sponsor attendees at other general conferences with special grants.

National and local newsletters are published quarterly. RID also distributes "How Can I Help," which is a citizen's action manual, fact sheets, bulletins and a victim aid sheet.

Membership is open to all concerned citizens on a chapter, individual or senior/student basis. Annual costs for chapter and individual membership dues are as follows: chapter — \$50; organization — \$30; individual — \$20; and student/senior — \$10. Also, non-members may subscribe to the RID-USA newsletter for \$10 annually.

The Kentucky High School Athlete
Official Publication of the
Kentucky High School Athletic Association

VOL. XLIX NO. 8

MARCH, 1987

\$5.00 PER YEAR

STATE WRESTLING CHAMPIONS
February 28, 1987 — Louisville, Kentucky

Simon Kenton High School



98-J. Everman, 105-C. Reimer, 119-P. Long, 126-D. Barnes, 145-P. Lee, 155-D. Fuehner, 167-C. Wood, 185-D. Brosky, Hwy.-R. Lee, Coach Mark Townsley.

Individual Weight Class Winners



98 lb.-J. Everman (SK), 105 lb.-C. Reimer (SK), 112 lb.-B. Hedges (WAG), 119 lb.-T. Lee (CHR. CO.), 126 lb.-M. Ohlmann (ST. X), 132 lb.-P. Moody (FT. CAMP.), 138 lb.-T. Vaughn (SCOTT), 145 lb.-A. Herring (HOP.), 155 lb.-J. Clay (DAN.), 167 lb.-M. Turnley (CHR. CO.), 185 lb.-D. Black (HC), Hwt.-L. Woodford, (HC).

MARCH, 1987 VOL. XLIX, NO. 8

Published monthly, except June and July, by the Kentucky High School Athletic Association, Office of Publication, 560 E. Cooper Dr., P.O. Box 22280, Lexington, KY 40522.

Third class postage paid at Richmond, Kentucky Acceptance for mailing at special rate of postage provided for in Section 1103, Act of October 3, 1917, authorized May 3, 1926. Publication No. 293080.

Please send notice of undelivered copies on form 3579 to: K.H.S.A.A., P.O. Box 22280, Lexington, Kentucky 40522.

Editor **TOM MILLS**
Assistant Editor **ANNE WESLEY MAYS**
Assistant Editor **BRIGID L. DeVRIES**
Assistant Editor **LOUIS STOUT**
Assistant Editor **BILLY V. WISE**
Assistant Editor **JULIAN TACKETT**

Lexington, Kentucky

BOARD OF CONTROL

President - Chester Turner (1983-1987) Fort Thomas,
 Vice-President - Frank Welch (1984-1988) Belfry,
 Directors - Tom Buchanan (1985-1989) Eddyville, Sam
 Chandler (1986-1990) Shelbyville, Charles Miller (1986-
 1990) Louisville, Tony Olinger (1984-1989) Lexington,
 Grant Talbott (1984-1988) Owensboro, Ken Tippet (1985-
 1989) Versailles, David Webb (1983-1987) Brownsville,
 Charlie Wilson (1984-1988) Hyden State Department of
 Education - Lloyd Redman, Louisville

Subscription Rate \$5.00 per year

Cover Photo. Senior Kelly Smith's freethrows with 2 seconds remaining gave Laurel County a win, and the championship of the 1987 Girls' Sweet Sixteen at Bowling Green. (staff photo)



FOR YOUR INFORMATION

The following Administrative changes have been made since the printing of the K.H.S.A.A. Handbook. You may want to make a note of them for future use.

Superintendent
 Larry Ryle
 Delmis Donta
 Darryl Treece
 Dr. Robert B. Siddens
 Robert W. Lumsden
 Michael S. Foreman
 Dr. Charles Roberts
 Hanly Funderburk
 Patrick Clore (Acting)

Principal
 Russell Frazier
 Joyce Marcy
 David Warinner
 Jody Sword
 Dr. Russell Bowen
 Michael Oder
 Dr. Richard Hughes
 Gary Rye
 Robert Nash
 Sister Lea
 Kenneth B. Gray
 Paul Hutchinson
 Don Sims
 Harold Fenderson
 Charles E. Tapley

School District
 Boone County Schools
 Boyd County Schools
 Caverna Schools
 Fulton City Schools
 Henry County Schools
 Lewis County Schools
 Metcalfe County Schools
 Model Laboratory School
 Pineville Schools

School District
 Betsy Layne H.S.
 Christian Academy
 Clinton County H.S.
 Elliott County H.S.
 Estill County H.S.
 Frankfort H.S.
 George Rogers Clark H.S.
 Harrodsburg H.S.
 Hart County H.S.
 Lexington Catholic H.S.
 Owen County H.S.
 Paul Blazer H.S.
 Potter Christian H.S.
 Shawnee H.S.
 Wolfe County H.S.

Athletic Director
 Tommy Mills
 Sharon Leezer
 Raymond Webb
 Don Sturgeon

School District
 Boyle County H.S.
 Brown H.S.
 Frankfort H.S.
 Franklin County H.S.

TEAM PICTURES NEEDED

Pictures of participating teams are needed for the State events programs and the "Athlete" magazine.

Plan Ahead - have a formal varsity squad photo taken in all sports at the beginning of the regular season.

COMING IN APRIL

- Girls' and Boys' Basketball Tournament Results**
- Delegate Assembly Proposals**
- State Track Meet Schedule**
- State Swimming Championship Pictures**

MAKE A PITCH FOR SPORTSMANSHIP



SPORT GOOFY

THE NATIONAL MASCOT OF HIGH SCHOOL SPORTS



STATE WRESTLING RESULTS — 1987

TEAM STANDINGS

Simon Kenton 101.0	Lafayette 14.5
Christian County 77.5	Pleasure Ridge Park 13.0
Woodford County 72.5	Oldham Co. 11.0
Hopkinsville 58.5	Doss 10.0
Scott 45.5	Moore 8.0
Waggener 41.0	Johnson Central 6.5
Ft. Campbell 37.0	Holmes 4.0
Fern Creek 36.5	Western 4.0
Conner 28.0	Oneida Baptist 3.0
Henry Clay 24.5	Paducah Tilghman 1.0
Danville 22.0	Caldwell Co. 1.0
Trinity 20.0	North Hardin 1.0
Ft. Knox 19.5	Frankfort 1.0
St. Xavier 18.5	Eastern 1.0
Boyle Co. 16.0	Ky. School F/D 1.0
Union Co. 15.0	

98# Weight Class

1 J Everman	Simon Kenton
2 D Donley	Christian Co.
3 B Pearl	Lafayette
4 Tim Buema	Scott

126# Weight Class

1 M Ohmann	St Xavier
2 D Barnes	Simon Kenton
3 D McCoun	Woodford Co
4 R Thomas	Ft Campbell

155# Weight Class

1 Jim Clay	Danville
2 D Fuchner	Simon Kenton
3 J Morgan	Woodford Co
4 J Baile	Ft Campbell

105# Weight Class

1 C Reimer	Simon Kenton
2 John Wyan	Conner
3 R Fowler	Doss
4 Brownlee	Ft Knox

132# Weight Class

1 Pat Moody	Ft Campbell
2 Poindexter	Hopkinsville
3 G Means	Woodford Co
4 R Hawkins	Scott

167# Weight Class

1 M Turnley	Christian Co
2 Richardson	Woodford Co
3 C Woods	Simon Kenton
4 N Mills	Hopkinsville

112 # Weight Class

1 B Hedges	Waggener
2 J Brigham	Union Co.
3 J Thomas	Conner
4 M Bowling	Johnson Central

138# Weight Class

1 T Vaughn	Scott
2 James Cox	Boyle Co
3 K Douglas	Woodford Co
4 Tim Lyle	Christian Co

185# Weight Class

1 D Black	Henry Clay
2 Holloway	Hopkinsville
3 Washburn	Fern Creek
4 Flournoy	Oldham Co

119# Weight Class

1 Tom Lee	Christian Co
2 J Hendrix	Waggener
3 Paul Long	Simon Kenton
4 Portwood	Woodford Co

145# Weight Class

1 A Herring	Hopkinsville
2 Ed Detsse	Christian Co
3 G Davis	Ft Knox
4 N Tuis	Scott

HWT Weight Class

1 Woodford	Fern Creek
2 L Kidwell	Trinity
3 R Roth	Pleasure Rdg Park
4 Jeff Sims	Moore

**Most Valuable Wrestler
Lawrence Woodford
Henry Clay**



1987 K.H.S.A.A. Swimming and Diving Champions Eastern Kentucky University

FRIDAY AND SATURDAY, FEBRUARY 27, & 28, 1987

GIRLS' FINAL RESULTS

Team	200 Yard Medley Relay	200 Yard Freestyle	200 Yard Ind. Medley	50 Yard Freestyle	Meter Diving	100 Yard Butterfly	100 Yard Freestyle	500 Yard Freestyle	100 Yard Backstroke	100 Yard Breaststroke	400 Yard Freestyle Relay	TOTAL POINTS
	1	2	3	4	5	6	7	8	9	10	11	Total
1. Sacred Heart Academy	32.0	16.0	47.5	16.0	40.0	14.0	16.0	13.0	0.0	40.0	32.0	266.5
2. Notre Dame Academy	26.0	9.0	12.5	14.0	10.0	0.0	10.0	0.0	2.0	31.0	26.0	140.5
3. Elizabethtown	20.0	4.0	7.0	11.0	0.0	9.0	9.0	0.0	10.0	3.0	20.0	102.0
4. Male	0.0	13.0	0.0	0.0	5.0	5.0	3.0	16.0	3.0	0.0	22.0	67.0
5. Model	22.0	3.0	0.0	19.0	0.0	12.0	2.0	2.0	0.0	0.0	4.0	64.0
6. Bowling Green	2.0	10.0	0.0	0.0	0.0	1.0	11.0	9.0	0.0	0.0	24.0	57.0
7. Paul Blazer	18.0	0.0	5.0	0.0	0.0	0.0	12.0	0.0	18.0	0.0	0.0	53.0
8. Dixie Heights	24.0	0.0	0.0	1.0	10.0	0.0	0.0	0.0	4.0	0.0	0.0	39.0
9. Beechwood	14.0	0.0	0.0	2.0	0.0	0.0	4.0	0.0	0.0	0.0	14.0	34.0
10. Scott	0.0	7.0	0.0	0.0	0.0	16.0	0.0	7.0	0.0	4.0	0.0	34.0
11. Taylor County	0.0	1.0	0.0	13.0	0.0	0.0	0.0	11.0	0.0	0.0	8.0	33.0
12. Henry Clay	0.0	0.0	7.0	0.0	7.0	10.0	0.0	0.0	0.0	0.0	6.0	30.0
13. Newport	0.0	0.0	0.0	0.0	0.0	0.0	13.0	0.0	16.0	0.0	0.0	29.0
14. Ballard	0.0	5.0	1.0	0.0	0.0	0.0	0.0	11.0	1.0	0.0	10.0	28.0
15. Eastern	0.0	0.0	0.0	5.0	0.0	0.0	0.0	3.0	0.0	0.0	18.0	26.0
16. Owensboro Catholic	0.0	0.0	13.0	0.0	0.0	0.0	0.0	0.0	12.0	0.0	0.0	25.0
17. Waggener	0.0	12.0	0.0	0.0	0.0	13.0	0.0	0.0	0.0	0.0	0.0	25.0
18. Sayre	0.0	11.0	0.0	0.0	0.0	0.0	0.0	12.0	0.0	0.0	0.0	23.0
19. Lexington Catholic	8.0	0.0	0.0	0.0	0.0	5.0	0.0	7.0	0.0	0.0	0.0	20.0
20. Hopkinsville	0.0	0.0	0.0	9.0	0.0	7.0	0.0	1.0	0.0	0.0	2.0	19.0
21. Lafayette	6.0	0.0	0.0	0.0	4.0	0.0	7.0	0.0	2.0	0.0	2.0	19.0
22. Tates Creek	10.0	0.0	0.0	0.0	0.0	0.0	0.0	0.0	0.0	7.0	0.0	17.0
23. Franklin County	0.0	0.0	0.0	0.0	0.0	4.0	0.0	0.0	9.0	0.0	0.0	13.0
24. Atherton	0.0	0.0	0.0	0.0	0.0	2.0	0.0	10.0	0.0	0.0	0.0	12.0
25. Holmes	0.0	0.0	0.0	0.0	12.0	0.0	0.0	0.0	0.0	0.0	0.0	12.0
26. Bellevue	0.0	0.0	0.0	0.0	0.0	0.0	0.0	0.0	0.0	5.0	0.0	5.0
27. Highlands	0.0	2.0	0.0	0.0	2.0	0.0	1.0	0.0	0.0	0.0	0.0	5.0
28. Madisonville N. Hopkins	4.0	0.0	0.0	0.0	0.0	0.0	0.0	0.0	1.0	0.0	0.0	5.0
29. George Rogers Clark	0.0	0.0	0.0	3.0	0.0	0.0	0.0	0.0	0.0	0.0	0.0	3.0
30. Oneida Baptist	0.0	0.0	0.0	0.0	0.0	3.0	0.0	0.0	0.0	0.0	0.0	3.0

GIRLS' INDIVIDUAL RESULTS

#1 - 200 Yard Medley Relay			#5 - 1 Meter Diving			#9 - 100 Yard Backstroke		
1 Sacred Heart Academy (SHA)	1:55.16		1 Laura Proffitt 12 (SHA)	481.10		1 Karyn Stubbs 12 (NEW)	59.71	
2 Notre Dame Academy (NDA)	1:57.36		2 Heather Pollard 9 (SHA)	386.65		2 Pam Stanford 12 (PB)	1:01.02	
3 Dixie Heights (DIX)	1:58.61		3 Allyson Heger 11 (HOL)	379.75		3 Tonya Lyddane 10 (OCH)	1:01.40	
4 Model (MOD)	1:58.66		4 Lara Shostel 12 (SHA)	368.00		4 Heather Brooks 11 (TAY)	1:03.84	
5 Elizabethtown (ET)	1:59.90		5 Monique Montney 12 (DIX)	349.00		5 Jennifer Ianke 9 (ET)	1:04.10	
6 Paul Blazer (PB)	2:01.34		6 Cecilia Brungs 12 (NDA)	337.20		6 Michelle Boggs 11 (FC)	1:05.22	
#2 - 200 Yard Freestyle			#6 - 100 Yard Butterfly			#10 - 100 Yard Breaststroke		
1 Eileen Sampsy 11 (SHA)	1:55.55		1 Jenny Andrews 10 (SCT)	59.28		1 Dorsey Tierney 11 (SHA)	1:03.43	
2 Judy Welting 11 (MLE)	1:55.74		2 Beth Holt 12 (WAG)	59.36		2 Beth Grohmann 11 (SHA)	1:08.65	
3 Beth Holt 12 (WAG)	1:58.00		3 Renan Wisenbaker 10 (MOD)	59.52		3 Tracie Pomeroy 10 (NDA)	1:09.75	
4 Dyer Ashley 10 (SAY)	1:59.69		4 Mandy Snider 11 (SHA)	1:00.00		4 Amy Barrett 11 (SHA)	1:10.62	
5 Elizabeth Buckberry 12 (BG)	2:00.60		5 Jena Ramsey 9 (HC)	1:00.57		5 Aly Boehmer 9 (NDA)	1:11.85	
6 Joann Wisman 12 (NDA)	2:01.69		6 Jennifer Ianke 9 (ET)	1:02.67		6 Debbie Krutzkamp 10 (NDA)	1:12.15	
#3 - 200 Yard Individual Medley			#7 - 100 Yard Freestyle			#11 - 400 Yard Freestyle Relay		
1 Dorsey Tierney 11 (SHA)	2:03.78		1 Leigh Ann Fetter 12 (SHA)	51.78		1 Sacred Heart Academy (SHA)	3:34.23	
2 Tonya Lyddane 10 (OCH)	2:13.31		2 Karyn Stubbs 12 (NEW)	53.45		2 Beth Grohmann 11 (SHA)	3:51.80	
3 Beth Grohmann 11 (SHA)	2:14.31		3 Pam Stanford 12 (PB)	55.66		3 Bowling Green (BG)	3:52.99	
4 Amy Barrett 11 (SHA)	2:17.13		4 Elizabeth Buckberry 12 (BG)	55.69		4 Male (MLE)	3:56.47	
4 Terr Wagner 12 (NDA)	2:17.13		5 Joann Wisman 12 (NDA)	56.03		5 Elizabethtown (ET)	3:56.67	
5 Joanne Riggs 12 (SHA)	2:18.08		6 Stephanie Livers 7 (ET)	56.46		6 Eastern (EST)	4:00.18	
#4 - 50 Yard Freestyle			#8 - 500 Yard Freestyle					
1 Leigh Ann Fetter 12 (SHA)	23.58		1 Judy Welting 11 (MLE)	5:04.39				
2 Heather Brooks 11 (TAY)	25.51		2 Eileen Sampsy 11 (SHA)	5:04.77				
3 Renan Wisenbaker 10 (MOD)	25.56		3 Dyer Ashley 10 (SAY)	5:12.49				
4 Stephanie Livers 7 (ET)	25.85		4 Marit Gibson 9 (BAL)	5:20.15				
5 Terr Wagner 12 (NDA)	26.02		5 Elizabeth Hickey 10 (ATH)	5:22.41				
6 Kim Proffitt 10 (HOP)	26.08		6 Je Ja Moore 8 (BG)	5:32.24				

1987 K.H.S.A.A. Swimming and Diving Champions Eastern Kentucky University

FRIDAY AND SATURDAY, FEBRUARY 27 & 28, 1987

BOYS' FINAL RESULTS

Team	200 Yard Medley Relay	200 Yard Freestyle	200 Yard Ind. Medley	50 Yard Freestyle	Meter Diving	100 Yard Butterfly	100 Yard Freestyle	500 Yard Freestyle	100 Yard Backstroke	100 Yard Breaststroke	400 Yard Freestyle Relay	TOTAL POINTS
	1	2	3	4	5	6	7	8	9	10	11	Total
1. Saint Xavier	24.0	23.0	22.0	4.0	0.0	13.0	17.0	31.0	10.0	20.0	20.0	184.0
2. Elizabethtown	32.0	7.0	25.0	17.0	0.0	21.0	4.0	12.0	17.0	13.0	18.0	166.0
3. Hopkinsville	10.0	13.0	24.0	11.0	0.0	18.0	16.0	0.0	11.0	14.0	32.0	149.0
4. Trinity	22.0	9.0	4.5	16.0	16.0	12.0	15.0	12.0	1.0	11.0	26.0	144.5
5. Covington Catholic	26.0	20.0	0.0	0.0	10.0	9.0	9.0	17.0	16.0	5.0	24.0	136.0
6. Highlands	8.0	0.0	1.0	23.0	10.5	0.0	5.0	0.0	0.0	10.0	22.0	80.5
7. Model	20.0	0.0	0.0	0.0	5.0	0.0	0.0	0.0	16.0	17.0	6.0	64.0
8. Daviess County	14.0	10.0	3.0	0.0	0.0	0.0	12.0	9.0	0.0	0.0	0.0	48.0
9. Madisonville N Hopkins	18.0	0.0	0.0	9.0	0.0	0.0	11.0	0.0	4.0	0.0	4.0	46.0
10. Bowling Green	6.0	5.0	0.0	0.0	10.5	0.0	0.0	0.0	0.0	0.0	0.0	30.5
11. Owensboro Catholic	0.0	0.0	0.0	0.0	9.0	0.0	0.0	4.0	0.0	0.0	14.0	27.0
12. Henry Clay	4.0	3.0	0.0	0.0	0.0	13.0	0.0	5.0	0.0	0.0	0.0	25.0
13. Covington Latin	0.0	0.0	7.0	0.0	0.0	0.0	0.0	13.0	0.0	0.0	0.0	20.0
14. Male	0.0	0.0	0.0	0.0	13.0	0.0	0.0	0.0	0.0	3.0	0.0	16.0
15. Tates Creek	0.0	2.0	0.0	0.0	3.0	0.0	0.0	0.0	0.0	0.0	10.0	15.0
16. Oldham County	0.0	0.0	0.0	0.0	0.0	7.0	0.0	0.0	3.0	0.0	0.0	10.0
17. Oneida Baptist	0.0	0.0	0.0	0.0	7.0	0.0	0.0	0.0	0.0	0.0	2.0	9.0
18. Eastern	0.0	0.0	0.0	7.0	0.0	0.0	1.0	0.0	0.0	0.0	0.0	8.0
19. Lafayette	0.0	0.0	2.0	0.0	2.0	0.0	3.0	0.0	0.0	0.0	0.0	7.0
20. Kentucky Country Day	0.0	0.0	4.5	0.0	0.0	0.0	0.0	0.0	2.0	0.0	0.0	6.5
21. Lloyd Memorial	0.0	0.0	0.0	0.0	4.0	0.0	0.0	0.0	0.0	0.0	0.0	4.0
22. Atherton	0.0	0.0	0.0	3.0	0.0	0.0	0.0	0.0	0.0	0.0	0.0	3.0
23. Paul Blazer	0.0	0.0	0.0	0.0	0.0	0.0	0.0	3.0	0.0	0.0	0.0	3.0
24. Beechwood	2.0	0.0	0.0	0.0	0.0	0.0	0.0	0.0	0.0	0.0	0.0	2.0
25. Campbellsville	0.0	0.0	0.0	2.0	0.0	0.0	0.0	0.0	0.0	0.0	0.0	2.0
26. Conner	0.0	0.0	0.0	0.0	1.0	0.0	0.0	0.0	0.0	0.0	0.0	1.0
27. Newport Central Catholic	0.0	1.0	0.0	0.0	0.0	0.0	0.0	0.0	0.0	0.0	0.0	1.0
28. Scott	0.0	0.0	0.0	1.0	0.0	0.0	0.0	0.0	0.0	0.0	0.0	1.0

BOYS' INDIVIDUAL RESULTS

<p>#1 - 200 Yard Medley Relay</p> <p>21 Elizabethtown (ET) 1:40:48 2 Covington Catholic (CC) 1:43:26 3 St Xavier (SX) 1:43:52 4 Trinity (TRN) 1:45:07 5 Model (MOD) 1:45:61 6 Madisonville N Hopkins (MNH) 1:46:01</p> <p>#2 - 200 Yard Freestyle</p> <p>1. Scott Ryan 12 (CC) 1:40:59 2. Steve Litchfield 12 (HOP) 1:44:40 3. Geoff Thomas 12 (STX) 1:48:32 4. Brian Wilcoxson 11 (STX) 1:49:55 5. Jay Ecleberry 11 (DC) 1:50:09 6. Rick Kraus 12 (TRN) 1:50:35</p> <p>#3 - 200 Yard Individual Medley</p> <p>1. Paul Godfrey 12 (ET) 1:59:94 2. Jay Smith 12 (HOP) 2:00:68 3. David Northup 10 (STX) 2:01:47 4. Taylor Hart 9 (HOP) 2:03:68 5. Chris John 9 (STX) 2:03:93 6. John Godfrey 10 (ET) 2:04:01</p> <p>#4 - 50 Yard Freestyle</p> <p>1. Kevin Zarow 12 (TRN) 22:60 2. Greg Sarakatsannis 11 (HGH) 22:76 3. Matt Brokaw 12 (ET) 22:81 4. Max Adams 12 (HOP) 22:87 5. Chip Bateson 12 (HGH) 22:91 6. David Nofsinger 12 (MNH) 22:99</p>	<p>#5 - 1 Meter Diving</p> <p>1. Ted Waldeyer 11 (TRN) 383:20 2. Jeff Tucker 12 (MLE) 376:00 3. Dewayne Trent 12 (BG) 362:25 4. Alan Frazer 12 (HGH) 362:25 5. Chris Boehmer 11 (CC) 3:20:20 6. Keith Hamilton 11 (OCH) 2:96:55</p> <p>#6 - 100 Yard Butterfly</p> <p>1. Max Adams 12 (HOP) 53:21 2. Steve Farnau 11 (HOC) 53:29 3. Grainger Scherer 12 (TRN) 53:40 4. Paul Godfrey 12 (ET) 53:84 5. John Cyganewicz 10 (ET) 55:85 6. Phil Summe 12 (CC) 56:05</p> <p>#7 - 100 Yard Freestyle</p> <p>1. Steve Litchfield 12 (HOP) 47:08 2. Kevin Zarow 12 (TRN) 49:11 3. Jay Ecleberry 11 (DC) 49:35 4. Brian Donley 11 (MNH) 49:87 5. Brian Wilcoxson 11 (STX) 50:14 6. J.J. Neubercher 10 (CC) 50:33</p> <p>#8 - 500 Yard Freestyle</p> <p>1. Scott Ryan 12 (CC) 4:29:67 2. David Northup 10 (STX) 4:51:14 3. Grainger Scherer 12 (TRN) 4:52:36 4. Reid Brown 9 (STX) 5:00:32 5. Russell McKinley 10 (ET) 5:00:56 6. Brian Keller 8 (DC) 5:10:48</p>	<p>#9 - 100 Yard Backstroke</p> <p>1. Bill Walters 10 (MOD) 55:61 2. Carter Gaither 11 (CL) 55:67 3. John Godfrey 10 (ET) 55:90 4. Jay Smith 12 (HOP) 56:25 5. Chris John 9 (STX) 57:78 6. J.J. Neubercher 10 (CC) 58:27</p> <p>#10 - 100 Yard Breaststroke</p> <p>1. Ed Jenkins 12 (STX) 1:01:48 2. Matt Brokaw 12 (ET) 1:01:69 3. Taylor Hart 9 (HOP) 1:02:67 4. Gary Parsons 12 (TRN) 1:03:47 5. Tom Fischer 11 (HGH) 1:04:40 6. Scott Chastain 12 (MOD) 1:05:39</p> <p>#11 - 400 Yard Freestyle Relay</p> <p>1. Hopkinsville (HOP) 3:14:74 2. Trinity (TRN) 3:19:38 3. Covington Catholic (CC) 3:22:88 4. Highlands (HGH) 3:23:63 5. St Xavier (SX) 3:25:08 6. Elizabethtown (ET) 3:28:60</p>
---	--	---

1987 GIRLS' GOLF REGIONS

Caldwell County — Ballard Memorial, Caldwell County, Calloway County, Central City, Christian County, Crittenden County, Fort Campbell, Greenville, Henderson County, Hickman County, Hopkinsville, Lone Oak, Lyon County, Madisonville-North Hopkins, Mayfield, Murray, Ohio County, Paducah Tilghman, Reidland, St. Mary, Union County, Webster County.

Caverna — Allen Cental, Apollo, Barren County, Bowling Green, Caverna, Clinton County, Daviess County, Franklin-Simpson, Glasgow, Hart County, Monroe County, Owensboro, Russellville, Warren Central.

Louisville — Atherton, Assumption, Ballard, Butler, Central, Doss, duPont Manual, Eastern, Holy Cross, Holy Rosary, Iroquois, Kentucky Country Day, Louisville Collegiate, Male, Mercy, Pleasure Ridge Park, Sacred Heart, Shawnee, Southern, St. Francis, Valley, Waggener, Western.

Elizabethtown — Adair County, Bardstown, Boyle County, Breckinridge County, Bullitt Central, Bullitt East, Campbellsville, Danville, East Hardin, Elizabethtown, Fort Knox, Green County, Hancock County, Marion County, Meade County, Nelson County, North Hardin, Taylor County, Washington County, West Hardin.

Owen County — Beechwood, Boone County, Carroll County, Campbell County, Conner, Dayton, Dixie Heights, Eminence, Highlands, Holmes, Holy Cross, Oldham County, Owen County, Notre Dame, Scott, Silver Grove, Trimble County, Villa Madonna, Williamstown.

Woodford County — Bryan Station, Frankfort, Franklin County, Harrodsburg, Henry Clay, Jessamine County, Lafayette, Lexington Catholic, Mercer County, Scott County, Shelby County, Tates Creek, Western Hills, Woodford County.

Casey County — Belfry, Casey County, Cawood, Corbin, Cumberland, Estill County, Garrard County, George Rogers Clark, Harlan, Jenkins, Knox Central, Laurel County, Lee County, Lincoln County, McCreary Central, Madison County, Model, Monticello, Pineville, Pulaski County, Russell County, Somerset, Wayne County.

Morehead — Boyd County, Fleming County, Harrison County, Hazard, Johnson Central, McDowell, Mason County, Maysville, Montgomery County, Nicholas County, Paintsville, Paul Blazer, Powell County, Prestonsburg, Raceland, Rowan County, St. Patrick.

1987 BOYS' GOLF REGIONS

Campbell County — Bellevue, Bishop Brossart, Campbell County, Dayton, Fleming County, Grant County, Highlands, Lewis County, Mason County, Maysville, Newport, Newport Central Catholic, Pendleton County, St. Patrick, Silver Grove, Williamstown.

Frankfort — Bourbon County, Bryan Station, Eminence, Frankfort, Franklin County, George Rogers Clark, Harrison County, Henry Clay, Henry County, Lafayette, Lexington Catholic, Montgomery County, Nicholas County, Oldham County, Paris, Sayre, Scott County, Shelby County, Tates Creek, Western Hills, Woodford County.

Washington County — Adair County, Anderson County, Bardstown, Bethlehem, Boyle County, Burgin, Campbellsville, Casey County, Danville, Garrard County, Green County, Harrodsburg, Jessamine County, Lincoln County, Marion County, Mercer County, Nelson County, Russell County, Taylor County, Washington County.

Somerset — Berea, Bell County, Corbin, Cumberland, Estill County, Harlan, Hazard, Knox Central, Laurel County, Lee County, McCreary County, Madison Central, Middlesboro, Model, Monticello, Pineville, Pulaski County, Somerset, Wayne County.

Paintsville — Belfry, Betsy Layne, Boyd County, East Carter, Fairview, Greenup County, Elkhorn City, Jenkins, Johnson Central, McDowell, Paintsville, Paul Blazer, Phelps, Pikeville, Powell County, Prestonsburg, Raceland, Rowan County, Russell, Sheldon Clark

Paducah — Ballard Memorial, Caldwell County, Calloway County, Christian County, Crittenden County, Fort Campbell, Fulton, Hickman County, Hopkinsville, Lone Oak, Lyon County, Marshall County, Mayfield, Murray, Paducah Tilghman, Reidland, St. Mary, Todd County Central, University Heights, Union County.

Owensboro — Apollo, Breckinridge County, Central City, Daviess County, Greenville, Hancock County, Henderson County, Madisonville-North Hopkins, Mead County, Ohio County, Owensboro, Owensboro Catholic, Providence, South Hopkins, Webster County.

Bowling Green — Allen County, Barren County, Bowling Green, Bullitt Central, Bullitt East, Caverna, Clinton County, East Hardin, Edmonson County, Elizabethtown, Fort Knox, Franklin-Simpson, Glasgow, Grayson County, Hart County, LaRue County, Monroe County, North Bullitt, North Hardin, Russellville, Warren East, Warren Central, West Hardin.

West Jefferson — Beth Haven, Butler, Central, DeSales, Doss, Fairdale, Holy Cross, Iroquois, Ninth & O, Pleasure Ridge Park, Portland Christian, Shawnee, Southern, Valley, Western.

East Jefferson — Atherton, Ballard, Christian Academy, duPont Manual, Eastern, Fern Creek, Jeffersontown, Kentucky Country Day, Male, Moore, St. Francis, St. Xavier, Seneca, Trinity, Waggener.

Covington — Beechwood, Boone County, Carroll County, Conner, Covington Catholic, Covington Latin, Dixie Heights, Gallatin County, Holmes, Holy Cross, Lloy Memorial, Owen County, St. Henry, Scott, Simon Kenton, Trimble County, Walton-Verona.



PROPOSITION 48 - NOW EXTENDS TO DIVISION II

Incoming students to an NCAA member institution who wish to immediately participate in intercollegiate athletics at the Division I level, or at the Division II level, must have maintained a 2.0 grade point average in a core curriculum including at least three years English, two years math, two years social science, and two years of physical or natural science; as well as having attained a 700 combined score on the SAT verbal and math sections or a 15 composite score on the ACT; and be a high school graduate. The by-law is now in the second year of a phase-in period, and eligibility may be attained for incoming athletes after August 1, 1987 and prior to August 1, 1988 by meeting one of three possible combinations --

G.P.A. and	SAT Verbal & Math or	ACT Composite
2.1 and above	680	14
2.000-2.999	700	15
1.900-1.999	720	16

The By-Law also allows for an exception which states, "An exception may be granted by the NCAA Eligibility Committee for a student who left high school after completion of his junior year or during his senior year to enter a member institution under an early admissions program open to students solely on the basis of outstanding academic performance and promise, and provided that for the last four semesters completed in high school, the student maintained an accumulative grade point average of 3.5 (based on a maximum of 4.0) and ranked in the top 20 percent of the students class, and that the student met all of the requirements of a qualifier except for graduation from high school."

Please consult the nearest NCAA Division I or II institution, Department of Athletics, NCAA Interpreter, if you have any questions. In Kentucky-Bellarmine, Centre, Eastern Kentucky, Kentucky (University of), Kentucky State, Kentucky Wesleyan, Louisville, Morehead State, Murray State, Northern Kentucky, and Western Kentucky are member institutions.

SCHEDULE FOR MEDICAL SYMPOSIUMS ANNOUNCED

Coaches in the high risk sports of Soccer, Football, Basketball, Baseball and Wrestling are required by the State Department of Education to annually attend the Medical Symposium sanctioned by the Department and sponsored by the Kentucky Medical Association. The schedule for this year is as follows--

- Louisville, June 5 and 6
- Ashland, June 12 and 13
- Madisonville, June 19 and 20
- Owensboro, July 18 (one day only)
- Lexington July 24 and 25
- Northern Kentucky, July 24 and 25

The respective hospitals and sponsoring locations will be mailing information to the Principals of member schools within the next few weeks. Please plan now to attend.

REMINDER TO FOOTBALL SCHOOLS AND OPEN DATES

The first playing date for football in 1987 is August 21. The first legal date for practice is August 1. Keep this in mind in making out your schedules. Please remember to inform the office as to open dates. This is also important due to the fact that the new alignment plan for football is to be implemented effective with the 1987 season. With the new alignment, and the additional week in which to schedule games, it is important to list open dates as soon as possible. At this time, we have the following open dates --

Week 1 (August 21) - Bourbon County, contact Coach John Nochta (606)987-2556; Bullitt East, contact Coach Keith Collins (502)538-7322; Fleming Neon, contact David Jones (606)855-7597; Greenup County, contact Dan Mercer, A.D. (606)473-7705; Madisonville North Hopkins, contact Jan Ireland, A.D. (502)825-6017; Marion County, contact Coach Mark Brown (502)692-6066; Paris, contact Randy Reese (606)987-4545

Week 2 (August 28) - Bardstown, contact Coach Garnis Martin (502)348-5913; Belfry, contact Coach Philip Heywood or Paul Dotson, A.D. (606)353-7230; Christian County, contact Wilton Gant, A.D. (502)887-1100; Conner, contact Coach Joe Clark (606)689-7696; Danville, contact Coach Tom Duffy (606)236-7957; Eminence, contact Coach Steve Frommeyer (502)845-5427; Newport, contact Coach Jim Weyer (606)292-3051; Russellville, contact Wayne Mullen, A.D. (502)726-8421; St. Xavier, contact Paul Young, A.D. (502)635-5300; Trigg County, contact Buddy Perry, A.D. (502)522-6072

Week 3 (September 4) - Boyd County, contact Ed VanHoose (606)928-6475; Bullitt East, contact Coach Keith Collins (502)538-7322; Clay County, contact Coach Eugene Hensley (606)598-3737; Fleming County, contact Coach Ted Purcell (606)845-6601; Hopkinsville, contact Danny Sundberg (502)886-3384; Oldham County, contact Bob Rowland, A.D. (502)222-9641; Russell County, contact Coach Ron Finley (502)866-3341

Week 4 (September 11) - Boone County, contact Owen Hauck (606)283-2795. Boyd County, contact Ed VanHoose (606)928-6475; Fleming Neon, contact David Jones (606)855-7597; Green County, contact Ivan Curnutte (502)932-7481; Russell, contact Lafe Walter, A.D. (606)836-9650

Week 5 (September 18) - Cathedral High (Indianapolis), contact Coach Michael McGinley (317)542-1481; Christian County, contact Wilton Gant, A.D. (502)887-1100; Dayton, contact Stan Steidel (606)261-4357; Green County, contact Ivan Curnutte (502)932-7481; Mayfield, contact Bob Sparks, A.D. (502)247-5582

Week 6 (September 25) - Bowling Green, contact Coach Dan Haley (502)842-1674; Dayton, contact Stan Steidel (606)261-4357; Fleming Neon, contact David Jones (606)855-7597; Garrard County, contact Coach Steve Sullivan (606)792-2146; Holmes, contact Coach William Hina (606)292-5845; Owensboro Catholic, contact Bruce Embry, A.D. (502)684-3215; Shelby County, contact Coach Tom Bechere (502)633-2443

Week 7 (October 2) - Franklin County, contact Coach Gary Dearborn (502)695-4155 after 11:45 a.m.; Marion County, contact Coach Mark Brown (502)692-6066

FOOTBALL OPEN DATES (continued)

Week 8 (October 9) - Christian County, contact Wilton Gant, A.D. (502)887-1100; Elkhorn City, contact Jerry Childers, A.D. (606)754-9098; Mayfield, contact Bob Sparks, A.D. (502)247-5582; Oldham County, contact Bob Rowland, A.D. (502)222-9641; Williamsburg, contact Coach Bob Rose (606)549-1915

Week 9 (October 16) - Boone County, contact Owen Hauck (606)283-2795. Christian County, contact Wilton Gant, A.D. (502)887-1100; Danville, contact Coach Tom Duffy (606)236-7957; North Bullitt, contact Bob Wagoner (502)957-2186

Week 10 (October 23) - Boone County, contact Owen Hauck (606)283-2795; Bourbon County, contact Coach John Nocht (606)987-2556; DeSales, contact Coach Don Hettich (502)361-1231; Glen Oak in Canton, Ohio, contact Ralph Ciccarella, Athletic Administrator (216)492-7455; Owen County, contact Gran Mefford (502)484-2715; Owensboro Catholic, contact Bruce Embry, A.D. (502)684-3215; Shelby County, contact Coach Tom Bechere (502)633-2443; Waggener, contact Coach Bob Redman (502)454-8340

Week 11 (October 30) - Elizabethtown, contact Duke Owen, (502)769-3381; Holmes, contact Coach William Hina (606)292-5845; Marion County, contact Coach Mark Brown (502)692-6066; Middletown (OH), contact Jim Place (513)422-7432; Williamsburg, contact Coach Bob Rose (606)549-1915

OHIO STATE TO HOLD TRAINERS WORKSHOP

Ohio State will be sponsoring a student athletic training workshop this summer on campus. The workshop will be held June 21-26/ For further information, contact Ohio State University, ATTN: Student Athletic Trainer Workshop, 410 Woody Hayes Drive, Columbus, OH, 43210, or call Bill Davis, Assistant Athletic Trainer, at (614)292-1164.

INSURANCE UPDATE

At a recent meeting of the National Federation Insurance committee, a determination was finalized relative to the participation of ineligible participants and the related insurance coverage. It was the ruling of the company and the committee, that any person participating in practice or play, in a sport sanctioned by the state association, who is not in violation of state regulations regarding limitation of seasons, etc. shall be covered by the catastrophic insurance and the liability coverage. It is important to note however, that if the school, coach or team is in any way in violation of the state association regulations, the coverage is void.

EDITORIAL CONTRIBUTIONS SOLICITED FOR NATIONAL NEWSLETTER

Stan Steidel, Athletic Director at Dayton High School has been named to the Editorial Board of the Athletic Director and Coach Newsletter. This national publication deals with current trends and problems in athletics ranging from legal issues to fund raising. If you have any idea which you would like to see written about, or have an article you wish to submit for publication, please contact Stan at Dayton High School, (606)491-6565.

KUDOS TO BELFRY HIGH FOOTBALL TEAM

Steve Phillips of Belfry reports that the Belfry High School Football program continued its tradition of excellence this season, both on the field and in the classroom. Forty-Nine players and managers found their names listed on the first semester honor roll as did six statisticians, 17 cheerleaders, and 4 Pirettes. This totals sixty-two (62) percent of the entire Belfry football program. Congratulations Belfry.

EASTERN KENTUCKY TO HOST CRAMER TRAINERS WORKSHOP

Eastern Kentucky University will host a 1987 Basic Workshop for student athletic trainers in conjunction with Cramer products. The workshop is designed to teach junior and senior high school students the fundamentals of athletic injury prevention and care. The seminar runs from June 28 through July 1. For further information, contact Janet Lozar, (800)255-6621.

NATIONAL STRENGTH AND CONDITIONING ASSOCIATION

The National Strength and Conditioning Association will hold its Region II clinic at the Kenan Fieldhouse on the campus of the University of North Carolina - Chapel Hill on May 2nd and 3rd. For further information, contact Mike Marks or Harley Dartt (919) 966-2575.

SYMPATHIES TO THE FAMILY OF "MAC" MCGINNIS

"Mac" McGinnis, who coached Owensboro to the state basketball title in 1949, and a total of ten teams to the Sweet Sixteen, died on February 5 in Owensboro. He was 79. McGinnis played his college basketball at the University of Kentucky and captained the 1930 Wildcats. He started his coaching career at Hartford High in Ohio County in 1933, and his 1936 Mustang team won the regional title. In the 1936-37 season, he left to coach at Daviess County where he stayed for seven years, bringing that team to two state tournaments. His fourteen year stint at Owensboro began in 1943, where his Red Devil teams won six straight regional titles starting in 1946, and again in 1953. His 1949 club featured future UK All American Cliff Hagan, and captured the state title. He left coaching in 1957 after compiling a 247-142 record at Owensboro to go into administration, holding various positions until his 1975 retirement. McGinnis is survived by his wife Helen, a daughter Carol Worth of Owensboro, and a brother, Louis McGinnis of Lexington.

A.C.T. TEST DATES FOR 1986-87

With the implementation of NCAA Proposition 48, it is important to keep up with the test dates for the American College Testing Assessment (ACT test). As mentioned above in this issue, it is also important to note that the NCAA Convention in January passed legislation extending proposition 48 to the Division II level. For the remainder of 1986-87 school year the schedule is as follows:

<u>Test Date</u>	<u>Regular Postmark Deadline</u>	<u>Late Deadline</u>
04/11/87	03/13/87	03/31/87
06/13/87	05/15/87	06/02/87

1987 REGIONAL GOLF MANAGERS

BOYS MANAGERS

Paducah — Larry Hopper, St. Mary High School, 1243 Eldmale, Box 7806, Paducah, Kentucky 42001, 502-442-4310.

Owensboro — Ron Peyton, Owensboro High School, 1800 Frederica Street, Owensboro, Kentucky 42301, 502-684-7221.

Bowling Green — Danny Spillman, Bowling Green High School, 1801 Rockingham Lane, Bowling Green, Kentucky 42101, 502-842-1674.

Frankfort — Joe Rogers, Western Hills High School, 100 Doctors Lane, Frankfort, Kentucky 40601, 502-875-2900.

Washington County — Bill Frost, Washington County High School, Lincoln Park Road, Springfield, Kentucky 40069, 606-336-3996.

West Jefferson — Mike Campbell, DeSales High School, 425 Kenwood Drive, Louisville, Kentucky 40214, 502-361-1231.

East Jefferson — Marty Donlon, St. Xavier High School, 1609 Poplar Level Road, Louisville, Kentucky 40217, 502-636-2525.

Covington — Jack Demming, Lloyd Memorial High School, Box 99, Bartlett Avenue, Erlanger, Kentucky 41015, 606-727-1535.

Campbell County — Tom Hummel/Carl Wenderoth, 3057 Magnolia Court, Edgewood, Kentucky 41017, (Hummel) 606-623-4161, (Wenderoth) 606-825-6085.

Somerset — Jeff Littrell, Somerset High School, College Street, Somerset, Kentucky 42501, 606-678-4721.

Paintsville — Walter Brugh, Paintsville High School, P.O. Box 152, Paintsville, Kentucky 41240, 606-789-3881.

STATE TOURNAMENT MANAGER — John Hackett, 830 McCullum Avenue, Elizabethtown, Kentucky 42701, 502-765-4240.

COORDINATOR — Ernie Denham, 3717 Taylorsville Road, #109, Louisville, Kentucky 40220, 502-452-1584.

GIRLS' MANAGERS

Caldwell County — Al Giordana, Caldwell County High School, Box 350, Princeton, Kentucky 42445, 502-365-3531.

Caverna — John Belcher, Caverna High School, Route 2, Horse Cave, Kentucky 42749, 502-773-2828.

Louisville — Raymond Kuhn, Ballard High School, 6000 Brownsboro Road, Louisville, Kentucky 40222, 502-895-0567.

Elizabethtown — Pat Wise, Elizabethtown High School, 620 North Mulberry Street, Elizabethtown, Kentucky 42701, 502-769-3381.

Woodford County — Lou Brown, Jessamine County High School, Route 4, Nicholasville, Kentucky 40356, 606-887-2421.

Owen County — Gran Mefford, Owen County High School, Route 4, Owenton, Kentucky 40359, 502-484-5509.

Casey County — Jim Ellison, Casey County High School, Route 4, Liberty, Kentucky 42539, 606-787-6151.

Morehead — Dr. Ron Walke, Rowan County High School, Route 5, Morehead, Kentucky 40351, 606-784-7721.

STATE MANAGER — Lou Brown, Jessamine County High School, Route 4, Nicholasville, Kentucky 40356, 606-887-2421 (School), 606-385-3952 (Home).



1987 TENNIS INFORMATION

BOYS REGIONAL SITES AND MANAGERS

Murray — (Jack Haskins/Sue Outland, Calloway County High School, 2108 College Farm Road, Murray, Kentucky, 42071, 502-753-5479) — Ballard Memorial, Caldwell County, Calloway County, Christian County, Fort Campbell, Heath, Hopkinsville, Lone Oak, Lyon County, Marshall County, Mayfield, Murray, Paducah Tilghman, Providence, Reidland, St. Mary, University Heights, West Hopkins.

Bowling Green — (Joe Tinius, L.C. Curry School, 1350 Durbin Drive, Bowling Green, Kentucky 42101, 502-842-0089/502-781-5774) — Allen County, Barren County, Bowling Green, Caverna, Cumberland County, Franklin-Simpson, Glasgow, Hart County, Logan County, Metcalf County, Monroe County, Muhlenberg Central, Russellville, St. Romuald, Warren Central, Warren East.

Henderson County — (Howard Crittenden, Henderson County High School, 2424 Zion Road, Henderson, Kentucky 42420, 502-827-2506) — Apollo, Bremen, Butler County, Central City, Daviess County, Greenville, Hancock County, Henderson County, McLean County, Madisonville-North Hopkins, Ohio County, Owensboro,

Owensboro Catholic, South Hopkins, Trinity (Whitesville), Union County, Webster County.

Elizabethtown — (David Rogers, Morningside Elementary School, Morningside Drive, Elizabethtown, Kentucky 42701, 502-769-3359) — Adair County, Bardstown, Bethlehem, Breckinridge County, Bullitt Central, Campbellsville, East Hardin, Elizabethtown, Fort Knox, Grayson County, Green County, LaRue County, Marion County, Meade County, Nelson County, North Bullitt, North Hardin, Spencer County, Taylor County, Washington County.

East Jefferson — (Allen Sledd, Ballard High School, 6000 Brownsboro Road, Louisville, Kentucky 40222, 502-426-2993/502-454-8206) — Atherton, Ballard, Eastern, Fern Creek, Jeffersonton, Kentucky Country Day, Oldham County, Seneca, Trinity, Waggener, Walden.

Central Jefferson — (Joseph Kroh, St. Xavier High School, 1609 Poplar Level Road, Louisville, Kentucky 40217, 502-637-4712/502-459-6586) — Central, Christian Academy, DeSales, duPont Manual, Evangel, Louisville Collegiate, Male, Ninth & O, Portland Christian, St. Francis, St. Xavier, Shawnee.

West Jefferson — (Kevin Salyer, Doss High School, 7601 St. Andrews Church Rd., Louisville, Kentucky 40214, 502-454-8754) — Butler, Doss, Fairdale, Holy Cross, Iroquois, Pleasure Ridge Park, Southern, Valley, Western.

Lexington — (Bill Goodan, Henry Clay High School, 2100 Fontaine Road, Lexington, Kentucky 40502, 606-269-3376) — Anderson County, Bryan Station, Frankfort, Franklin County, Henry Clay, Lafayette, Lexington Catholic, Sayre, Shelby County, Tates Creek, Western Hills, Woodford County.

Richmond — (Jerry Johns, Box 308, Somerset, Kentucky 40251, 606-679-1547/606-678-5610) — Barbourville, Berea, Bell County, Boyle County, Corbin, Cumberland, Danville, Estill County, Garrard County, George Rogers Clark, Harlan, Harrodsburg, June Buchanan, Knox Central, Laurel County, Leslie County, Lincoln County, Madison Central, Mercer County, Middlesboro, Model, Oneida, Pineville, Pulaski County, Russell County, St. Camillus, Somerset.

Ashtand — (Mary Robinson, Russell High School, Red Devil Drive, Russell, Kentucky 41169, 606-836-9658/502-836-4330) — Bath County, Belfry, Betsy Layne, Boyd County, Buckhorn, Elkhorn City, Greenup County, Hazard, Holy Family, Knott County, Lawrence County,

McDowell, Magoffin County, Montgomery County, Paintsville, Paul Blazer, Prestonsburg, Rowan County, Russell, Sheldon Clark, Wolfe County.

Northern Kentucky — (Roger Walz, Highlands High School, 2400 Memorial Parkway, Ft. Thomas, Kentucky 41075, 606-781-3333) — Augusta, Beechwood, Boone County, Campbell County, Carroll County, Connor, Covington Catholic, Covington Latin, Dayton, Dixie Heights, Gallatin County, Henry County, Highlands, Holmes, Holy Cross, Lloyd Memorial, Newport, Newport Central Catholic, Oldham County, St. Henry, Scott, Simon-Kenton, Trimble County.

Paris — (Wilson Sears, Bourbon County High School, 3343 Lexington Road, Paris, Kentucky 40361, 606-987-2550) — Bourbon County, Bracken County, Deming, Fleming County, Harrison County, Lewis County, Mason County, Maysville, Millersburg Military Institute, Nicholas County, Paris, Pendleton County, St. Patrick, Scott County.

BOYS' STATE MANAGER: Joseph Kroh, St. Xavier High School, 1609 Poplar Level Road, Louisville, Kentucky 40217, 502-637-4712/502-459-6586.

GIRLS REGIONAL SITES AND MANAGERS

Murray — (Jack Haskins/Sue Outland, Calloway County High School, 2108 College Farm Road, Murray, Kentucky 42071, 502-753-5479) — Ballard Memorial, Caldwell County, Calloway County, Christian County, Fort Campbell, Heath, Hopkinsville, Lone Oak, Lyon County, Marshall County, Mayfield, Murray, Paducah Tilghman, Providence, Reidland, St. Mary, University Heights, West Hopkins.

Bowling Green — (Joe Tinius, L.C. Curry School, 1350 Durbin Drive, Bowling Green, Kentucky 42101, 502-842-0089/502-781-5774) — Allen County, Barren County, Bowling Green, Caverna, Cumberland County, Franklin-Simpson, Glasgow, Hart County, Logan County, Metcalfe County, Monroe County, Muhlenberg Central, Russellville, St. Romuald, Warren Central, Warren East.

Henderson County — (Howard Crittenden, Henderson County High School, 2424 Zion Road, Henderson, Kentucky 42420, 502-827-2506) — Apollo, Bremen, Butler County, Central City, Daviess County, Greenville, Hancock County, Henderson County, McLean County, Madisonville-North Hopkins, Ohio County, Owensboro, Owensboro Catholic, South Hopkins, Trinity (Whitesville), Union County, Webster County.

Elizabethtown — (David Rogers, Morningside Elementary School, Morningside Drive, Elizabethtown, Kentucky 42701, 502-769-3359) — Adair County, Bardstown, Bethlehem, Breckinridge County, Bullitt Central, Campbellsville, East Hardin, Elizabethtown, Fort Knox, Grayson County, Green County, LaRue County, Marion County, Meade County, Nelson County, North Bullitt, North Hardin, Spencer County, Taylor County, Washington County.

East Jefferson — (Bob Roos, 3704 Ten Broeck, Louisville, Kentucky 40222, 502-426-2993) — Assumption, Atherton, Ballard, Eastern, Fern Creek, Jeffersonton, Kentucky County Day, Oldham County, Sacred Heart, Seneca, Waggener, Walden.

Central Jefferson — (Cindy Greer, Louisville Collegiate, Box 4369, 2427 Glenmary Avenue, Louisville, Kentucky 40204, 502-451-5330) — Central, Evangel, Louisville Collegiate, Male, Mercy Academy, Ninth & O, Portland Christian, Presentation, St. Francis, Shawnee.

West Jefferson — (Kevin Salyer, Doss High School, 7601 St. Andrews Church Rd., Louisville, Kentucky 40214, 502-454-8754) — Butler, Doss, Fairdale, Holy Cross, Holy Rosary, Iroquois, Pleasure Ridge Park, Southern, Valley, Western.

Northern Kentucky — (Roger Walz, Highlands High School, 2400 Memorial Parkway, Ft. Thomas, Kentucky 41075, 606-781-3333) — Augusta, Beechwood, Bellevue, Boone County, Campbell County, Carroll County, Conner, Dayton, Dixie Heights, Gallatin County, Highlands, Holmes, Holy Cross, Lloyd Memorial, Newport, Newport Central Catholic, Notre Dame, St. Henry, Scott, Simon-Kenton, Villa Madonna.

Lexington — (Bill Goodan, Henry Clay High School, 2100 Fontaine Road, Lexington, Kentucky 40502, 606-269-3376) — Anderson County, Bryan Station, Frankfort, Franklin County, Henry Clay, Jessamine County, Lafayette, Lexington Catholic, Sayre, Shelby County, Tates Creek, Western Hills, Woodford County.

Richmond — (Jerry Johns, Box 308, Somerset, Kentucky 40251, 606-678-5610) — Barbourville, Boyle County, Corbin, Cumberland, Danville, Estill County, Garrard County, George Rogers Clark, Harlan, Harrodsburg, Knox Central, Laurel County, Leslie County, Lincoln County, Madison Central, Mercer County, Middlesboro, Model, Oneida, Pineville, Pulaski County, Russell County, St. Camillus, Somerset.

Ashtand — (Mary Robinson, Russell High School, Red Devil Drive, Russell, Kentucky 41169, 606-836-9658/502-836-4330) — Bath County, Belfry, Betsy Layne, Boyd County, Buckhorn, Elkhorn City, Hazard, Knott County, Lawrence County, McDowell, Magoffin County, Montgomery County, Paintsville, Paul Blazer, Phelps, Prestonsburg, Rowan County, Russell, Sheldon Clark.

Paris — (Wilson Sears, Bourbon County High School, 3343 Lexington Road, Paris, Kentucky 40361, 606-987-2550) — Bourbon County, Bracken County, Deming, Fleming County, Harrison County, Lewis County, Mason County, Maysville, Nicholas County, Paris, Pendleton County, St. Patrick, Scott County.

GIRLS' STATE MANAGER: Becky Watson, 208 Sherwood Drive, Hopkinsville, Kentucky 42240, 502-886-1173, 502-887-1150 (P.M.)/502-887-1250 (A.M.)

ATTENTION**Track Coaches**

The State High School Track Meet all classes will be held on Saturday, May 30, 1987, at the University of Kentucky Sports Center in Lexington. The State Manager is John Gettler.

The regional, sectional, and state meets will be scored this year with individual awards being given for the first six places and team trophies awarded the winning and runner-up teams.

1987 Track & Field Regional Managers (Boys and Girls)

CLASS A

- Fort Campbell High School** — Marshall Patterson, Fort Campbell High School, Ohio Ave. and Falcon Loop, Fort Campbell 42223, 615-431-5056.
- Providence/Murray State** — Willis Simpson, Providence High School, Cedar Street, Providence 42450, 606-667-7065.
- Bellevue** — Pep Stidham, Bellevue High School, Center and Lafayette, Bellevue, 41073, 606-261-2980.
- Lexington** — Frank Maklivic, Frankfort High School, 328 Shelby Street, Frankfort 40601, 502-223-8030.
- Kentucky Country Day** — Gene Moutoux, Kentucky Country Day, 4100 Springdale Road, Louisville, Kentucky 40222, 502-348-5913.
- Berea College** — Bill Patton, Berea High School, Ellipse Street, Berea 40403, 606-986-4911.
- Pikeville** — Joe Mahan, Pikeville High School, 116 N. Mayo Trail, Pikeville 41501, 606-432-0186.
- Boyd County** — Bob Stacey, Boyd County High School, Route 2, Box 374, Ashland 41101, 606-928-6473.

CLASS AA

- Fort Campbell** — Marshall Patterson, Fort Campbell High School, Ohio Ave. and Falcon Loop, Fort Campbell 42223, 615-431-5056.
- Barren County** — Terry Reed, Barren County High School, Route 6, Glasgow 42141, 502-651-6315.
- Bellevue** — Pep Stidham, Bellevue High School, Center and Lafayette, Bellevue, Kentucky 41073, 606-261-2980.
- Lexington** — Jean Wright, Timberlawn Circle #41, Frankfort 40601, 502-695-2081.
- Fort Knox** — Mike McCoy, Fort Knox High School, 7501 Missouri St., Fort Knox 40121, 502-624-6647.
- Berea College** — Bill Patton, Berea High School, Ellipse Street, Berea 40403, 606-986-4911.
- Boyd County** — Bob Stacey, Boyd County High School, Route 2, Box 374, Ashland 41101, 606-928-6473.
- Pikeville** — Joe Mahan, Pikeville High School, 116 North Mayo Trail, Pikeville 41501, 606-432-0186.

CLASS AAA

- Henderson County** — David Mitchell, Henderson County High School, 2424 Zion Road, Henderson 42420, 502-827-2506.
- Shelby County** — Larry Wingfield, Shelby County High School, US 60 East, Shelbyville 40065, 502-633-2344.
- Bellevue** — Pep Stidham, Bellevue High School, Lafayette and Center, Bellevue 41073, 606-261-2980.
- Boyd County** — Bob Stacey, Boyd County High School, Route 2, Box 374, Ashland 41101, 606-928-6473.
- Iroquois** — Mike McDaniel, Iroquois High School, 4515 Taylor Boulevard, Louisville 40215, 502-454-8269.

- Moore** — Gene Carroll, Moore High School, 6415 Outer Loop, Louisville, 40229, 502-454-8304.
- Lexington** — Jean Wright, Timberlawn Circle #41, Frankfort, 40601, 502-695-2081.
- Berea College** — Gordon Bocock, Pulaski County High School, 511 East University, Somerset 42501, 606-679-6931.

1987 Track & Field Sectional Managers (Boys & Girls)

CLASS A

- Section 1: Regions 1 & 2**, Daviess County High School — Will Pagan, Daviess County High School, 4255 New Hartford Road, Owensboro 42301, 502-684-5285.
- Section 2: Regions 3 & 4**, Lexington — Frank Miklavcic, Frankfort High School, 328 Shelby St., Frankfort, Kentucky 40601, 502-223-8030.
- Section 3: Regions 5 & 6**, Berea College — Bill Patton, Berea High School, Ellipse Street, Berea 40403, 606-986-4911.
- Section 4: Regions 7 & 8**, Boyd County High School — Bob Stacey, Boyd County High School, 12307 Midland Trail Road, Ashland 41001, 606-928-6473.

CLASS AA

- Section 1: Regions 1 & 2**, Daviess County High School — Will Pagan, Daviess County High School, 4255 New Hartford Road, Owensboro 42301, 502-684-5285.
- Section 2: Regions 3 & 4**, Lexington — Jean Wright, Timberlawn Circle #41, Frankfort, Kentucky 40601, 502-695-2081.
- Section 3: Regions 5 & 6**, Fort Knox — Mike McCoy, Fort Knox High School, 7501 Missouri Street, Fort Knox 40121, 502-624-6647.
- Section 4: Regions 7 & 8**, Boyd County High School — Bob Stacey, Boyd County High School, 12307 Midland Trail Road, Ashland 41001, 606-928-6473.

CLASS AAA

- Section 1: Regions 1 & 2**, Daviess County High School — Will Pagan, Daviess County High School, 4255 New Hartford Road, Owensboro 42301, 502-684-5285.
- Section 1: Regions 3 & 4**, Boyd County High School — Bob Stacey, Boyd County High School, 12307 Midland Trail Road, Ashland 41001, 606-928-6473.
- Section 3: Regions 5 & 6**, Iroquois High School — Bro. Borgia, St. Xavier High School, 1609 Poplar Level Road, Louisville 40217, 502-637-4712.
- Section 4: Regions 7 & 8**, Lexington — Jean Wright, Timberlawn Circle #41, Frankfort 40601, 502-695-2081.





1987 NFICA/OA Conference



FRIDAY, JUNE 19

REGISTRATION/EXHIBITS Noon-6:00 p.m.

Note: The first 1500 members registering will have an additional \$1,000,000 claims made liability protection making a total of \$2,000,000 coverage for their 1987-88 membership year.

GRADUATE CREDIT SEMINAR 1:00 p.m.-5:00 p.m.

OPENING GENERAL SESSION 7:00 p.m.-8:30 p.m.



John Wooden

KEYNOTE ADDRESS "A Pyramid to Success"

By: John Wooden
Former UCLA Basketball Coach
(A Dynamic Opener!)

HOSPITALITY PARTY 8:30 p.m.-10:00 p.m.

SATURDAY, JUNE 20

SPOUSE BREAKFAST PROGRAM 8:00 a.m.-9:45 a.m.

SECOND GENERAL SESSION 8:30 a.m.-9:30 a.m.



Bernie Saggau

"We're All In This Together"

By: Bernie Saggau
Executive Director
Iowa High School
Athletic Association

SPOUSE TOUR & LUNCH 10:00 a.m.- 2:00 p.m.

Crown Center, Westport and Country Club Plaza

WORKSHOP SESSION "A" 10:00 a.m.-11:15 a.m.

(Choice of Topics 1 Thru 7 — See Panel at Bottom Right)

CONFERENCE LUNCHEON Noon-1:30 p.m.



Irv Brown

"I Never Read the Book, I'm Waiting for the Movie"

By: Irv Brown
Denver Media Personality
Former Top Official & Supervisor

COACHES AND OFFICIALS SPORTS

SEMINARS AND ASSOCIATION

LEADERSHIP SESSIONS 1:45 p.m.-3:30 p.m.

(Choice of Topics 8 Thru 23)

CONFERENCE "KC" BAR-B-Q 4:00 p.m.-6:30 p.m.

SUNDAY, JUNE 21

FCA BREAKFAST/THIRD

GENERAL SESSION 8:30 a.m.-10:15 a.m.

FOURTH GENERAL SESSION 11:00 a.m.-Noon



Dr. Robert Voy

"Effect of Chemical Abuse on Sports in America"

By: Dr. Robert Voy
U.S. Olympic Committee
Director of Sports
Medicine & Science

SUNDAY, JUNE 21 (CONTINUED)

EXHIBIT HALL DOOR PRIZES Noon-1:15 p.m.

WORKSHOP SESSION "B" 1:30 p.m.-2:45 p.m.

(Choice of Topics 24 Thru 29 — See Panel Below)

NFICA/NFIOA STATE & SECTIONAL CAUCUSES

AND BUSINESS MEETINGS 3:00 p.m.-5:00 p.m.

All members meet with State Directors and their national Board Representative to conduct the annual business of the two associations, i.e., Awards and Rules Committee Nominations, Discussion of Insurance, Professional Development, Publications and topics from the floor. State door prizes end this session.

CONFERENCE BANQUET 6:30 p.m.-8:30 p.m.



Ken Hatfield

"Nice Guys Don't Always Finish Last"

By: Ken Hatfield
Head Football Coach,
University of Arkansas Razorbacks
**NFICA/NFIOA NATIONAL AWARDS
TO ACTIVE HIGH SCHOOL
COACHES AND OFFICIALS**

MONDAY, JUNE 22

FIFTH GENERAL SESSION 9:00 a.m.-10:15 a.m.

**PANEL DISCUSSION: "Legal Liability and Litigation
for the High School Coach and Official"**



From the Insurance View
Doug Ruedinger, President
The Ruedinger Companies



From the Lawyer's View
John Oatrock,
Vice President
and Legal Counsel



From the Judge's View
Hon. Robert Stephens
Chief Justice,
Kentucky Supreme Court

WORKSHOP SESSION "C" 10:30 a.m.-11:45 a.m.

(Choice of Topics 30 Thru 35 Below)

TENTATIVE WORKSHOP SCHEDULE

(Choose One from Each Workshop Session
and one from the Seminar Session)

10:00 a.m. - Saturday - Workshop Session "A"

FOR OFFICIALS

- | | | |
|--|----------------|---------------------------------|
| 1. Football - Quiz the Rules Makers Panel | 16. Baseball | 21. Volleyball |
| 2. Soccer - Quiz the Rules Makers Panel | 17. Basketball | 22. Wrestling |
| 3. Volleyball - Quiz the Rules Makers Panel | 18. Football | 23. Officials' Association |
| *4. What the College Officials' Supervisor Looks For | 19. Soccer | Organization and Administration |
| *5. Strength and Explosive Power Development | | |
| 6. Coaching the Female Athlete | | |
| 7. Quiz the NCAA (Prop. 48 update, Recruiting, etc.) | | |

1:30 p.m. - Sunday - Workshop Session "B"

1:45 p.m. - Saturday - Separate Seminars for
Coaches (8 thru 15) and Officials (16 thru 23)

Sessions will stress fundamentals of coaching, playing and/or officiating your sport. Noted high school, college and professional level clinicians will be featured.

FOR COACHES

- | | | |
|---------------|---------------------------------|--|
| 8. Baseball | 13. Volleyball | 30. Baseball - Quiz the Rules Makers Panel |
| 9. Basketball | 14. Wrestling | 31. Track - Quiz the Rules Makers Panel |
| 10. Football | 15. Coaches Association | 32. Officials' On-tp-In Session - Quiz Top Officials |
| 11. Soccer | Organization and Administration | 33. RELATIONSHIPS - Coaches/Officials/State Athletic Assocs. |
| 12. Track | | 34. Wellness and Stress Management |
| | | 35. NF TARGET Chemical Health Program |

*Repeated Sessions

SEE NEXT PAGE FOR REGISTRATION MATERIAL

**ADVANCE REGISTRATION FORM: NATIONAL CONFERENCE OF HIGH SCHOOL COACHES AND OFFICIALS
KANSAS CITY, MISSOURI - JUNE 19-22, 1987**

(Please print or type)

Name: _____ (first) _____ (last) Nickname (for badge): _____ NFICA Member (✓) _____
 School: _____ Street Address: _____ NFIOA Member (✓) _____
 City: _____ State: _____ Zip: _____ Phone: () _____
 Spouse's Name (if registering): _____ Spouse Nickname (for badge): _____ If bringing children, list ages _____

PAYMENT IS ENCLOSED TO COVER: (please complete)

NFICA or NFIOA Member Conference Fee	\$50.00	Amount Paid	
or Non-Member Conference Fee	\$60.00	\$	_____
Includes Banquet, Luncheon, Hospitality Party, Bar-B-Q & Program Activities)			
NFICA or NFIOA Member's Spouse Fee	\$10.00		
or Fee for Spouse of Non-Member	\$15.00		
(Includes Spouse Breakfast, Program, Charm, Tour & Hospitality Activities		\$	_____
Extra Luncheon Tickets	Number _____ @ \$12.50 each =	\$	_____
Extra Banquet Tickets	Number _____ @ \$25.50 each =	\$	_____
	Total Enclosed	\$	_____

NOTE Tuition for the Graduate Credit Seminar will be due at time of registration Friday, June 19, 1987 - 1:00 p.m. Reserve your place by checking box below. Your room reservation card should be mailed directly to the Hyatt, 2345 McGee, Kansas City, MO 64108 (If you need another card, call the NF at the number below). Be sure to fill out the other side of this form and **MAIL IT**.

Check one of the following: (please, **NO** purchase orders accepted)
 Master Card Visa Check Enclosed (Check No. _____)
 Signature _____
 Account No. _____ Exp. Date _____

The National Federation
 P.O. Box 20625
 Kansas City, Missouri 64195
 (for more information, phone 816/464-5400)

First 1500 members to register receive an extra \$1,000,000 liability coverage for 1987-88.

----- DETACH, FOLD HERE, AND RETURN TO NATIONAL FEDERATION -----

**PLEASE ASSIST US IN FINALIZING WORKSHOP OFFERINGS BY PROVIDING THIS IMPORTANT INFORMATION
I AM INTERESTED IN ATTENDING THE FOLLOWING WORKSHOPS AND SEMINAR**

SESSIONS	CHECK ONLY ONE FOR EACH SESSION									
Saturday, 10:00 a.m. - Workshop Session "A"	1 <input type="checkbox"/>	2 <input type="checkbox"/>	3 <input type="checkbox"/>	4 <input type="checkbox"/>	5 <input type="checkbox"/>	6 <input type="checkbox"/>	7 <input type="checkbox"/>	8 <input type="checkbox"/>	9 <input type="checkbox"/>	10 <input type="checkbox"/>
Saturday, 1:45 p.m. - Coaches' Seminar	8 <input type="checkbox"/>	9 <input type="checkbox"/>	10 <input type="checkbox"/>	11 <input type="checkbox"/>	12 <input type="checkbox"/>	13 <input type="checkbox"/>	14 <input type="checkbox"/>	15 <input type="checkbox"/>	16 <input type="checkbox"/>	17 <input type="checkbox"/>
or										
Saturday, 1:45 p.m. - Officials' Seminar	16 <input type="checkbox"/>	17 <input type="checkbox"/>	18 <input type="checkbox"/>	19 <input type="checkbox"/>	20 <input type="checkbox"/>	21 <input type="checkbox"/>	22 <input type="checkbox"/>	23 <input type="checkbox"/>	24 <input type="checkbox"/>	25 <input type="checkbox"/>
Sunday, 1:30 p.m. - Workshop Session "B"	24 <input type="checkbox"/>	25 <input type="checkbox"/>	26 <input type="checkbox"/>	27 <input type="checkbox"/>	28 <input type="checkbox"/>	29 <input type="checkbox"/>	30 <input type="checkbox"/>	31 <input type="checkbox"/>	32 <input type="checkbox"/>	33 <input type="checkbox"/>
Monday, 10:20 a.m. - Workshop Session "C"	30 <input type="checkbox"/>	31 <input type="checkbox"/>	32 <input type="checkbox"/>	33 <input type="checkbox"/>	34 <input type="checkbox"/>	35 <input type="checkbox"/>	36 <input type="checkbox"/>	37 <input type="checkbox"/>	38 <input type="checkbox"/>	39 <input type="checkbox"/>

I am interested in the college graduate credit seminar (Tuition \$50.00 per hour — 1-3 hours available)
 Optional Tour - I (We) are interested in attending the "Gymnastics Championships of the USA" at reduced ticket prices (✓)

INFORMATION ON OTHER ACTIVITIES

The Conference Hospitality Party and Bar-B-Q are free for registrants, their spouses and children.
 The Conference Banquet and Luncheon are included in the registrants fee. Spouses and children may buy extra tickets.
 The spouses registration includes the Spouse Breakfast, Program charms, and tour, plus all meetings, including the FCA Breakfast.

----- DETACH AND SEND TO HYATT REGENCY -----



ROOM RESERVATION CARD

**THE NATIONAL FEDERATION'S FIRST ANNUAL NATIONAL CONFERENCE OF HIGH SCHOOL COACHES AND OFFICIALS
June 19-22, 1987**



Please Type or Print
 Name _____ (Please type or print) Last First _____ Name of Spouse _____ (If Accompanying)
 Address _____ School or Company: _____
 City & State _____ Zip _____ Phone: () _____
 Accommodations desired: Single \$56.00 Double \$56.00 Arrival Date _____ Departure Date _____
 Rates subject to tax. The above rates will apply 3 nights before and after the dates indicated — subject to room availability.

Special Request and/or Name(s) of other room occupants _____

NOTE: If sharing with another coach/official, give his/her name, city and state. Please avoid duplicate reservations.

Name (as on credit card) _____ VISA **MAIL TO: Hyatt-Regency**
 Credit Card Number _____ MasterCard **Attention: Reservations**
 Expiration Date of Card _____ American Express **2345 McGee Streets**
Kansas City, MO 64108

**THIS IS A RESERVATION REQUEST AND MUST BE ACCOMPANIED BY ONE NIGHT'S ROOM DEPOSIT EITHER BY CHECK OR CREDIT CARD.
A WRITTEN CONFIRMATION WILL BE SENT TO YOU. ALL REQUESTS MUST BE RECEIVED BY JUNE 1, 1987.**



1987 NATIONAL FEDERATION TRACK AND FIELD RULE INTERPRETATIONS PART I

PUBLICATION CORRECTIONS

Case Book

Page 24 - S. R. 4.3.1B — Delete the Comment

Examination

Question 31 should be **False**.

SITUATION #1: Following the first heat of the 4 x 100 meter relay, the head inspector reports to the referee that Team A, who finished first, failed to complete the second exchange while the baton was within the limits of the exchange zone. Team A is disqualified and the referee instructs the head inspector to notify Team A's coach. For one reason or another, the inspector fails to do so. When Team A reports for the finals, they are notified of the disqualification in the preliminary heat. Team A's coach protests, claiming that he had never been notified, and had he, he would have changed the make-up of his 4 x 200 meter relay knowing that his anchorman, who was only entered in three events, was listed as an alternate on the 4 x 200 meter relay, would not be running in the finals of the 4 x 100.

RULING: While the officials were in error in not notifying Team A or Team A's coach of the disqualification, the protest must be denied and the disqualification stands. (3-4-4)

COMMENT: While the rules now require notification of any disqualification, the recommended procedure is to notify the runner or team in question while they are still in the finish line area, that an infraction had been reported and a ruling would be made. When there is a disqualification declared and the officials experience some difficulty in finding the offending athlete or the team coach, a public address announcement of the disqualification should be made.

SITUATION #2: With temperatures hovering around the freezing mark, one or more members of Team A's relay team appear at the starting line wearing gloves, and the starter or clerk of course orders them to remove the gloves. A member of the relay team protests that the gloves are worn strictly for protection against the cold weather and do not contain any material that would appreciably increase the gripping capabilities of the runners.

RULING: The decision to remove the gloves stands. There is no need for the officials to judge whether the gloves do or do not provide any extra gripping surface to the baton. All gloves are now prohibited in relay races. (5-9-6)

SITUATION #3: As A1 is making his approach in the pole vault, B1 crosses the runway and collides with A1, knocking him to the ground. In (a), there was no control ropes or marshals to control access to the runway and A1 was not seriously hurt. In (b), B1 had to duck under a control rope and ignored a warning by the event judge. A1 is seriously hurt and is forced to drop out of competition.

RULING: In (a), A1 will be given a new trial after sufficient rest and no disqualification should be necessary. In (b), B1 will be disqualified from further competition in the meet. (4-5-6)

SITUATION #4: In the girls' 100 meter high hurdles, A1 stumbles as she approaches the final hurdle. As she attempts to regain her balance, she pushes over the hurdle and finishes the race. When her disqualification is announced, A1's coach protests that she did not "deliberately knock down the hurdle with her hand."

RULING: The protest will be denied, if it was obvious that A1 did not attempt to clear the hurdle by jumping or striding over it. (5-12-1, 5-12-2(a))

SITUATION #5: A1 reports to the discus wearing (a) his left foot in a walking cast with a discus rubber tip on the bottom, or (b) his left (or non-throwing) forearm in a cast.

RULING: In (a) or (b), this would not be considered as an artificial aid or illegal. **COMMENT:** While "artificial aids" are not specifically addressed in the throwing events, as they are, for example in the jumping events, Rule 6-3-6 prohibits the wearing of gloves and restricts the use of tape on any part of the (throwing) hands or fingers to the covering of an open cut or wound. In the case above, we are talking about a cast on the leg or non-throwing hand, wrist or arm. While some may debate that these casts could improve the velocity of the spinning motion, such casts would seem to be more of a hindrance than an aid. It probably would be a good practice for the competitor to submit some form of documentation that the cast is necessary to protect an existing injury. (6-3-6, 7-2-8)

SITUATION #6: The boy's state cross country meet ends with Team A and Team B each scoring 80 points. Team A is awarded the championship after applying the tie-breaking procedure in Rule 9-2-4. The coach of Team B appeals that one of his runners was incorrectly placed in the finish chute. The correct place would give Team B 79 points, with Team A remaining at 80 points. Meet management has authorized the use of a videotape of the finish to resolve such problems. Upon initial examination of the videotape, the referee rules there was no error in placement. Team B's coach, feeling that the referee's decision was based on looking at the wrong runner, requests a review by the Jury of Appeals, which has been authorized by the state high school association, to act in this capacity. The Jury of Appeals concurs with the appeal and the order of the finish is corrected making Team B the champion. Team A's coach protests there are no provisions in Rule 9 to authorize the use of a Jury of Appeals.

RULING: The protest shall be denied. There are many sections of Rules 2 thru 5 that also apply to cross country competition, and at one time, prior to the expansion of the cross country rules, the rule book carried a note preceding the cross country rules that states, "All applicable portions of Rules 2 thru 8 also apply to cross country competition." The authority for the state association to appoint a Jury of Appeals is carried in Rule 3-2-4(b).

SITUATION #7: In the girls' 4 x 400 meter relay starting from a three-lurn stagger, lead-off runner A1, running in lane four, is leading by 10 yards when she inadvertently cuts for the pole after the second turn. Realizing her error, she immediately returns to lane four without interfering with any other runner and successfully exchanges the baton with A2 in their assigned lane.

RULING: No disqualification is warranted. (5-10-1)

SITUATION #8: Following an unsuccessful trial in the pole vault, A1 protests to the event judge that the location of the landing pad restricted the bend in his pole and asks for a substitute trial.

RULING: The request shall be denied.

COMMENT: Meet management has the prerogative of positioning the landing pad so that the back of the cut-out for the front pad is no farther than 14 inches from the vertical plane of the top of the stopboard. If A1 felt the position of the landing pad would hinder the bend in his pole, and the pad was not placed at its maximum distance from the stopboard, he should have made his wishes known prior to the beginning of competition. In no case may the pit be moved farther than 14 inches from the stopboard, regardless of any hindrance this may cause to the vaulting pole. (7-4-5)

SITUATION #9: Is it the intent of Rule 7-4-4, which states in part, "When the landing pad is made up of two or more sections, the landing surface must include a common cover or pad extending over all sections" to require a cover that also extends over the front pad?

RULING: Specifications for the pole vault "pit" or "pad" are carried in two separate articles. Article 4 deals with the landing pad, and specifies that when the landing surface is made up of two or more sections, it must include a common cover extending over all sections. Article 5 addresses the front pad, and specifies it "must (either be attached to the main landing pad, or encased in a common cover). Though a cover extending over all sections of both the landing pad and front pad may be desirable, it is not the intent of the change in Rule 7-4-4 to require a common cover or pad that extended over both the landing pad and the front pads, if the front pads are attached to the main landing surface by some other means.

SITUATION #10: Upon arriving at the meet site, the coach of Team B notes that the pole vault landing pad does not meet specifications.

RULING: In the case of a dual meet, the host school will forfeit all points in the pole vault. In the case of a multi-school meet, the pole vault becomes a non-event, and the incident should be reported to the conference league or state association office. (7-4-4, 7-4-5, S. R. 7.4.8)

SITUATION #11: The coach of Team A is videotaping A1's trials in the pole vault. Between trials, A1 leaves the area to view a replay of the videotape as the coach points out errors in technique.

RULING: A1 shall be disqualified. (4-5-8(a))

COMMENT: While it is permissible for a coach to "confer" with a contestant between events or trials, pictures, videotapes, etc. are considered an illegal aid when utilized for coaching purposes during competition.

SITUATION #12: In the shuttle hurdle relay, Team A is running in lanes one and two, Team B in lanes three and four. A2, running in lane two, knocks over a hurdle, which falls into the third lane. There isn't time for the hurdle crew to reset the hurdle and when B3 advances down lane three, he is forced to run around Team A's hurdle.

RULING: Team A will be disqualified and the referee may decide to rerun the race between the remaining teams. (5-12-1(c), 5-12-1(e))

COMMENT: It is not necessary for a hurdler to fall to warrant interference and subsequent disqualification. If Team A's hurdle in any way impedes the runner in an adjacent lane, there is grounds for interference.



BLUEGRASS STATE GAMES™

Coaches-Teachers-Administrators

The 1987 Official Entry Form Guide will be available through your school principal in early April.

Encourage your students to enter the most exciting and challenging sporting event in Kentucky's History. The Games also offers coaches, teachers, administrators the opportunity to participate as an athlete. Send in your entry today . . . Catch the spirit and share the thrill of competition at its very best.


MARTHA LAYNE COLLINS, GOVERNOR



For more information call or write:

Sue Feamster, Executive Director
Bluegrass State Games-87
P.O. Box 1405, Frankfort, KY 40602
502-564-3677 or 1-800-722-2474

Your Kentucky Sport's Festival
Finals - July 31, August 1 and 2, Lexington, Kentucky

DISCOUNT TROPHIES



4080
Your choice of column colors and choice of eagles or year dates.

AA 25 1/2"	\$17.69
A 24 1/2"	\$17.39
B 23 1/2"	\$17.09
C 22 1/2"	\$16.78
D 21 1/2"	\$16.49



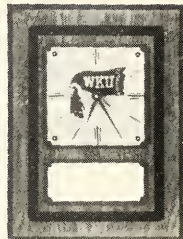
4261
Backs-Gold or Silver. Fronts-Red, Blue, Green or Bronze. Eagles or year dates available.

AA 17 1/2"	\$6.29
A 16 1/2"	\$6.14
B 15 1/2"	\$5.99
C 14 1/2"	\$5.84
D 13 1/2"	\$5.69



4185
Your choice of red/gold, blue/gold, green/gold and tortise/gold. Top columns. Choice of oak or walnut bottom columns. Eagles or year dates available.

AA 22"	\$7.79
A 21"	\$7.63
B 20"	\$7.48
C 19"	\$7.33
D 18"	\$7.19



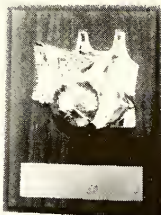
WKUCL CLOCK
Oak finish board, black inlay design. Genuine Quartz movement, two color clock face. Red and gold plate colors. Order your school logo or special event.
WKUCL \$34.95

\$5.00 additional layout charge for non-stock logo's.



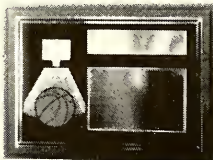
RB4626
Walnut finish board with gold medallion holder. Choice of insert.

4x6	\$3.25
5x7	\$3.95
6x8	\$4.75
7x9	\$5.59
8x10	\$6.49



RB1280
Walnut finish board with gold basketball figure.

6x6	\$6.49
7x9	\$7.25
8x10	\$7.96



B 200
Black plate with gold trim. Orange ball, brown floor, white backboard. Other activities available.

6x8	\$5.84
-----	--------



KYCL CLOCK
Oak finish board, black inlay design. Genuine Quartz movement, three color clock face. Blue and silver plate colors. Order your school logo or special event.
KYCL \$34.95

\$5.00 Additional layout charge for non-stock logo's.

PHONE
1-502-651-5143

734 EAST MAIN ST.
GLASGOW, KY. 42141

KY WATS
1-800-862-0282

STATES BORDERING KY
1-800-626-0220

Richard's
TROPHIES

Kentucky High School Athletic Association
P.O. Box 22280
Lexington, KY 40522

Non-Profit Org.
U.S. Postage
PAID
Richmond, KY
Permit No. 108