

9-1-1987

The Athlete, September 1987

Kentucky High School Athletic Association

Follow this and additional works at: <http://encompass.eku.edu/athlete>

Recommended Citation

Kentucky High School Athletic Association, "The Athlete, September 1987" (1987). *The Athlete*. Book 331.
<http://encompass.eku.edu/athlete/331>

This Article is brought to you for free and open access by the Kentucky High School Athletic Association at Encompass. It has been accepted for inclusion in The Athlete by an authorized administrator of Encompass. For more information, please contact Linda.Sizemore@eku.edu.



THE
A
T
H
L
E
T
E

September, 1987

Volume XLX, No. 2

Official Publication of
The Kentucky High School
Athletic Association

Member of National Federation of State High School Associations



STICKLE JOINS TARGET

The National Federation's TARGET program is now at full strength in its effort to help students cope with problems related to alcohol and other drugs.

Richard A. Stickle, the former executive director of the Idaho High School Activities Association, is the new director of the TARGET program.

Stickle has developed TARGET Idaho, a chemical health education program organized in conjunction with the national TARGET program, and he has great concern for the youth of this nation.

Prior to his 13 years in the Idaho association, Stickle has been involved with high school students as an assistant principal, athletic director, coach and teacher. He has coached football, basketball, wrestling and track and was a math teacher for 15 years.

"The TARGET program is growing rapidly, and we are fortunate to have a person of Dick's ability to lead us in this important endeavor," said Brice Durbin, executive director of the National Federation.

The TARGET program has four major components — a national resource center and toll-free telephone number, an on-going training program for adult and student volunteers, a national insurance program for alcohol/drug rehabilitation and printed materials such as this publication.

Individuals now can obtain the location of the nearest alcohol/drug treatment center and the latest information on abuse of drugs in sports by calling 1-800-366-6667. Kathy Perry is the coordinator of the TARGET Resource Center.

In addition, the student insurance plan is now available, which will provide alcohol and drug rehabilitation insurance at a group purchase price of \$1 per student. Enrollment of all students in a school is necessary to participate, and a minimum participation level of one million students is required before the policy goes into effect.

When the insurance program is activated, the program will pay up to \$25,000 a student for the first six months of approved, professional treatment. It also will cover an additional \$12,500 in expenses for the first year for a total coverage of \$37,500. To enroll your students in the program, contact TARGET Insurance, 1420 S.W. Arrowhead Road, P.O. Box 2159, Topeka, Kansas 66601.

This is the second issue of the On TARGET publication, which is sent (four copies) to every high school in the United States. The youth of this nation are our most precious commodity, and TARGET is seeking to help our young people lead healthy, socially responsible lives and make alcohol and drug use and abuse out of style.

LEADER TRAINING BEGINS

The first TARGET leadership training session for state-level leaders of coaches, athletic directors and advisors was held May 11-15 at Hazelden in Center City, Minnesota. Twenty-one individuals from New York and West Virginia were involved in the first session.

Since then, two additional training sessions have been held. Thirty individuals from five states (Georgia, South Dakota, Wisconsin, Nebraska, Kansas) were trained July 20-24 and 30 others from four states (Massachusetts, Utah, Arkansas, Idaho) received training at Hazelden August 17-21.

Designed to help schools and communities address concerns about alcohol and other drug use, the TARGET training program is an intensive, week-long session. The workshop provides a foundation of knowledge and skills for individuals, who are selected by the state association, to take back and implement in their schools, where they can present what they've learned to others.

The format is not prescriptive, however. It does not give people a magic formula for solving complex problems.

"The problems that students, schools and communities face are often intertwined and often unique," said Roger Svendsen, program development manager for the Hazelden-Cork Sports Education program. "It is not our goal to provide canned solutions for each situation that arises. Rather, we believe there are some overall approaches that seem to be successful, and which can be easily replicated. These basic 'systems' can form the framework on which tailor-made policies and programs can be built and implemented."

Through a series of discussions, movies, videotapes, group activities and written materials, the participants in the first three sessions learned a great deal about effective ways to help students cope with alcohol and other drug issues. Following are the comments from some of the first participants:

"I came to this workshop with a lot of bits and pieces of what drug education meant, now I see how things fit together into a package that our local community and school can really use."

"The workshop was the single greatest educational experience in my 18 years as a teacher and coach."

"The experience of the workshop was fantastic. I am looking forward to sharing my knowledge and skills as a trainer with the member schools of my section and implementing TARGET in New York state."

"The program was outstanding in every way. It was the best training session in my 29 years in education."

The next TARGET leadership training session is scheduled for September 21-25, with 23 individuals from five states set to participate — Oregon, New Jersey, New Mexico, Michigan and Wyoming. Twenty-three additional persons from Pennsylvania, Minnesota and Illinois will be involved in the October 19-23 session, and Idaho and Alaska are scheduled for the November 2-6 training.

For more information on the TARGET leadership training, contact Dick Stickle, director of TARGET, 11724 Plaza Circle, P.O. Box 20626, Kansas City, MO 64195; 816/464-5400.

The Kentucky High School Athlete
Official Publication of the
Kentucky High School Athletic Association

VOL. XLX, NO. 2

SEPTEMBER, 1987

\$5.00 PER YEAR

KENTUCKY HIGH SCHOOL ATHLETIC ASSOCIATION
REPORT OF EXAMINATIONS OF FINANCIAL STATEMENTS

for the years ended June 30, 1987 and 1986

BALANCE SHEETS

	<u>1987</u>	<u>1986</u>
ASSETS		
Current assets:		
Cash	\$102,834	\$3,046
Certificates of deposit and savings accounts	458,579	499,462
Interest receivable	3,170	-
Prepaid insurance	6,443	6,443
TOTAL CURRENT ASSETS	<u>\$571,026</u>	<u>\$508,951</u>
Fixed assets		
Land	27,000	27,000
Building	209,289	209,289
Equipment	147,039	143,091
TOTAL FIXED ASSETS	<u>\$383,328</u>	<u>\$379,380</u>
	<u>\$954,354</u>	<u>\$888,331</u>
LIABILITY AND FUND EQUITY		
Current liability:		
Accounts payable	\$4,345	\$1,440
Fund equity:		
Reserve for fixed assets	383,328	379,380
Fund balance	566,681	507,511
TOTAL FUND EQUITY	<u>\$950,009</u>	<u>\$886,891</u>
	<u>\$954,354</u>	<u>\$888,331</u>

EXPENDITURES:

General and administrative	656,133	650,378
Boys' State Basketball Tournament	257,064	212,279
Girls' State Basketball Tournament	85,407	83,480
Track	44,601	40,808
Football playoffs	32,547	32,539
Tennis	13,953	12,189
Cross Country	12,338	10,027
Golf	10,782	8,938
Baseball	10,889	9,762
Soccer	11,815	5,104
Softball	10,255	7,886
Swimming	8,973	7,274
Wrestling	6,486	6,758
Volleyball	3,562	3,838
Mid America Classic	304	39,852
TOTAL EXPENDITURES	<u>\$1,165,109</u>	<u>\$1,131,112</u>
Revenues over (under) expenditures	59,170	(130,530)
Fund balance, beginning of year	507,511	638,041
Fund balance, end of year	<u>\$566,681</u>	<u>\$507,511</u>

RETIREMENT TRUST FUND

	<u>1987</u>	<u>1986</u>
ASSETS		
Current assets:		
Cash	\$3,046	\$4,462
Certificates of deposit and savings account	120,000	115,000
Accrued interest receivable	450	450
	<u>\$123,496</u>	<u>\$119,912</u>

FUND BALANCE

FUND BALANCE	<u>\$123,496</u>	<u>\$119,912</u>
--------------------	------------------	------------------

RETIREMENT TRUST FUND
STATEMENT OF REVENUES, EXPENDITURES
AND CHANGES IN FUND BALANCE

	<u>1987</u>	<u>1986</u>
REVENUES		
Interest	\$6,903	\$9,571
EXPENDITURES		
Retirement payments	3,319	3,253
Excess revenues over expenditures	3,584	6,318
Fund balance, beginning of year	119,912	113,594
Fund balance, end of year	<u>\$123,496</u>	<u>\$119,912</u>

STATEMENT OF REVENUES EXPENDITURES
AND CHANGES IN FUND BALANCE

	<u>1987</u>	<u>1986</u>
REVENUES		
Boys' State Basketball Tournament	\$816,069	\$604,234
Girls' State Basketball Tournament	115,306	105,291
Football playoffs	80,984	49,282
Member fees	71,866	87,041
Other tournaments	57,165	36,206
Interest earned	31,363	38,020
Advertising and publications	41,142	34,445
Video sales and other	7,482	5,008
Mid America Classic	2,902	41,055
TOTAL REVENUES	<u>\$1,224,279</u>	<u>\$1,000,582</u>

SEPTEMBER, 1987 VOL. XLX, NO. 2

Published monthly, except June and July, by the Kentucky High School Athletic Association, Office of Publication, 560 E. Cooper Dr., P.O. Box 22280, Lexington, KY 40522.

Third class postage paid at Richmond, Kentucky. Acceptance for mailing at special rate of postage provided for in Section 1103. Act of October 3, 1917, authorized May 3, 1926. Publication No. 293080.

Please send notice of undelivered copies on form 3579 to: K.H.S.A.A., P.O. Box 22280, Lexington, Kentucky 40522.

- Editor **TOM MILLS**
 - Assistant Editor **ANNE WESLEY MAYS**
 - Assistant Editor **BRIGID L. DeVRIES**
 - Assistant Editor **LOUIS STOUT**
 - Assistant Editor **BILLY V. WISSE**
 - Assistant Editor **JULIAN TACKETT**
- Lexington, Kentucky

BOARD OF CONTROL

President - Frank Welch (1984-1988) Belfry, Vice-President - Tom Buchanan (1985-1989) Eddyville, Directors - William Case (1987-1991) Paris, Sam Chandler (1986-1990) Shelbyville, Huston DeHaven (1987-1991) Hardinsburg, Charles Miller (1986-1990) Louisville, Tony Olinger (1984-1989) Lexington, Grant Talbott (1984-1988) Owensboro, Ken Tippett (1985-1989) Versailles, Charlie Wilson (1984-1988) Hyden, State Department of Education -Lloyd Redman, Louisville.

Subscription Rate \$5.00 per year

Cover Photo by Brian Rickerd and courtesy of the Frankfort State Journal


brackets. Only Regional winners were eligible for byes. Following a discussion of the State Tournament time schedule, it was decided to move the Friday matches a little earlier. Steve Williams made a motion to leave the Semi-final schedule on Saturday as is. The motion carried.

The next item on the agenda was the officials fees. There will be no change in fees for the 1987-88 school year. Umpires and referees will receive \$18.00 per match for regular season varsity play. Regional tournament fees are \$20.00 and State Tournament fees are \$25.00 per match plus a travel expense.

Ms. DeVries announced the times and sites for the Clinics. A brief discussion followed regarding the 1987-88 National Federation Volleyball rules. The most significant change was in rule 3-5-PEN which specifies that when the host school does not pad the standards, floor/ wall cables and referee's platform according to rule 3-1-3, the match shall not be played, and the state association shall be notified. Ms. DeVries advised the Committee that Kentucky did not adopt Rule 12, which allows officials to use the red and yellow card procedure for penalizing unsportsmanlike conduct.

Following a discussion regarding the Limitation of Seasons, Margi McKenna made a motion that the Volleyball Committee recommend to the Board of Control that the volleyball season be the same number of weeks as cross country and soccer. Steve Williams seconded the motion which carried unanimously.

There being no further business, the meeting was adjourned.

 **1987-88 NATIONAL FEDERATION VOLLEYBALL RULE BOOK CORRECTIONS**

Case Book / Officials Manual Corrections

The Federation Volleyball Case Book / Officials Manual will not be printed until 1988-89. The following major revisions in the present case book/manual were necessitated by the 1987-88 revisions in volleyball.

Page 53 — 2-1-1 B — The court at the playing site is marked in meters rather than feet. **RULING:** Legal.

Page 56 — 3-1-3 A — The net supports are: (a) not padded; (b) not padded to the proper thickness; (c) properly padded, but the referee's platform is not padded. **RULING:** The match shall not be conducted, and the state association shall be notified.

Page 59 — 4-2-1 B — Two members of Team B are wearing number 15 on their uniform. Due to an oversight, one player is allowed to enter the game. The duplication is discovered when the second player attempts to enter the game. **RULING:** Unnecessary delay and the second player cannot enter the game until the number has been changed to a legal number. If the scorebook has to be changed, point or side-out is awarded the opponents.

Page 59 — 4-2-1 C — Five minutes before the match, the umpire notices that one team has two players listed with the same number. The actual uniforms do not have the same number on them. **RULING:** Neither player may enter the game until the scorebook is corrected and point or side-out is awarded the opponents for the incorrect roster. (7-2-PEN-1)

Page 59 — 4-2-1 E — A team does not have numbers on their uniforms. **RULING:** No player may enter the game without a number. If the team places legal numbers on the uniforms and submits an accurate roster lineup 10 minutes prior to the start of the game, there is no penalty. All applicable penalties are assessed if necessary.

Page 59 — 4-2-1 G — Some of Team A's uniforms are red with white trim, and others are white and with red trim.



VOLLEYBALL COMMITTEE MINUTES

The Volleyball Committee met at the Kentucky High School Athletic Association Office in Lexington, Kentucky, on Monday, August 17, 1987. The meeting was called to order at 10:00 a.m. by Brigid L. DeVries, Assistant Commissioner. Committee members present included Nancy Barre, Mike McDaniel, Margi McKenna, Sally Meng, Mike Whitehouse and Steve Williams.

The first item on the agenda was a discussion of regional tournaments and sites. Ms. DeVries advised the Committee of a few changes in the teams in each region. The regional sites were discussed and some changes were made in last year's sites. Regional tournaments will be double elimination.

Nancy Barre made a motion, seconded by Mike Whitehouse, that the teams not change benches for the 1987 season including regional and state tournament play. The motion carried unanimously.

The Committee then discussed the items on the Regional Information Sheet and made some corrections for the coming year.

A discussion followed regarding the site for the 1987 State Volleyball Tournament to be held October 30-31. Mike Whitehouse made a recommendation that the State Tournament be held at Fairdale High School in Louisville. After a review of the proposal submitted from Fairdale, the Committee approved Fairdale as the site for the 1987 Tournament.

The State Tournament format was the next topic of discussion. The winner and runner-up will advance from the Regional Tournaments. Expenses will be paid for the winning team only.

The State Tournament Draw was conducted. Winners and runners-up from the same region were placed in opposite

Volleyball Rule Book Corrections Continued from Page Two

RULING: The team must designate which uniform is the "official" color. The team is penalized point/side-out when the first player not wearing the "official" uniform attempts to enter the contest. After that one penalty, both color uniforms are legal for the remainder of the match.

Page 63 — 6-3-1 B — **RULING** should read, "Unless the state association determines otherwise, the referee shall instruct Team A to change benches and assess an unnecessary delay penalty. If Team A still refuses to change benches, the match shall be forfeited."

Page 66 — 6-3-2 J — **COMMENT:** Non-serving players may be on, not over, the boundary lines or center line at the moment the server contacts the ball. The server may not touch the end line or floor outside the lines marking the width of the serving area at the moment of the serve.

Page 74 — 9-9-8 B — (New rule reference is 9-8-3) Players from Team A report for substitution with one wearing an illegal sized number and one wearing illegal equipment. **RULING:** Simultaneous foul during a dead ball situation, each rule violated is penalized. The illegal equipment penalty is unnecessary delay and the player may not enter the game until the equipment is removed or made legal. Penalty for an illegal uniform is penalized by point or side-out unless the team was previously assessed the illegal uniform penalty during this match. In either case, the player wearing the illegal uniform may enter the game.

Rule Book Corrections

Cover — Major Rule Changes — "9-8-3" should be "9-8-4".

Page 10 — 2-4 Penalty (1) — Spelling error — first word change "whan" to "when".

Page 25 — 9-3-3b (2) — Change rule reference from "9-7-6" to "9-7-2".

Page 29 — 9-9-1 F & G — Add: F. There is a double foul during play G. There are conflicting calls which the referee cannot resolve.

Page 37 — Comments on the Rule — "9-8-3" should be "9-8-4".

Situation 25: An injured player is replaced by a player who has already been in the game 3 times because there is no other player available except one who has already played in another position. The official informs the coach that the player who has already played in another position is the proper substitute in the abnormal situation.

Ruling: Correct procedure. (10-3-5).



VOLLEYBALL INFORMATION

The K.H.S.A.A. will sponsor regional and state volleyball tournaments in October, 1987. The regional tournaments will be held during the week of October 19th and the State Tournament is scheduled for October 30 & 31, 1987 at Fairdale High School in Louisville.

The manager will be Assistant Commissioner Brigid L. DeVries.

The region sites and teams assigned to each are listed below

Region I (at Fairdale High School)—Beth Haven, Butler, Doss, Evangel, Fairdale, Holy Cross, Holy Rosary, Pleasure Ridge Park, Shawnee, Southwest Christian, Valley, Western;

Region II (at Southern High School) Brown, Central, Iroquois, Male, Manual, Mercy, Moore, Ninth & O, Portland Christian, Presentation, Southern;

Region III (at Seneca High School)—Assumption, Atherton, Ballard, Christian Academy, Eastern, Fern Creek, Jefferson-town, Ky, Country Day, Oldham County, Sacred Heart, Seneca, Waggener;

Region IV (at Scott and Holy Cross)—Beechwood, Dixie Heights, Holmes, Holy Cross, Lloyd Memorial, Ludlow, Notre Dame, St. Henry, Scott, Simon Kenton, Villa Madonna;

Region V (at Newport & Newport Central Catholic)—Bellevue, Boone County, Bishop Brossart, Bracken County, Campbell County, Conner, Dayton, Highlands, Newport, Newport Central Catholic, Walton Verona.

Regional VI (at Woodford County)—Breathitt County, Ft. Knox, Oneida Baptist, Paul Blazer, Rowan County, Woodford County.



Friends of Kentucky High School Athletics, Inc.

A relatively new Louisville citizens group has lent much needed support to Kentucky High School Athletics. The Friends of Kentucky High School Athletics, Inc. is a non-profit organization formed in November, 1985.

The purpose of the corporation is to promote, enhance and up grade athletic activities in and about the Commonwealth of Kentucky, while promoting good will for Jefferson County. The Executive Board, which represents a number of leading civic and corporate leaders in Jefferson County, consists of Mike Detenber, Harbor Industries; Bob DeSpain, Carrier Vibrating Equipment, Inc.; Lynn Ashton, Louisville Convention & Visitors Bureau; Mike Conliffe, Jefferson County Attorney; and Barry Strafacci, Kentucky Fair & Exposition Center.

Their first project was to promote the 1985 State Football Championships. Tee shirts and hats having the State Football Championships logo printed on them and other mementoes were given to each player, cheerleader and staff member of each of

A Friend In Deeds

PROVIDENCE - CLASS A GIRLS

Kentucky High School Track Meet

Lexington, Kentucky-May 30, 1987



Front Row (L to R): Karla Cosby, Lasema Powell, Adrienne Mason, Candy Belt, Tawanna Jones. **Second Row:** Mandy Walker, Katrina Brooks, Nikki Ross, Darrell Hayes-Coach, Ayanna Brown, Sonya Copeland, Vidia Fowler.

100m Low Hurdles

1. Michelle Ray, Ballard Memorial, 15.75
2. Theresa Woeste, Bishop Brossart, 16.04
3. Christel Bussell, Nicholas County, 16.65
4. Gerni Crume, Bardstown, 16.78
5. Karla Cosby, Providence, 16.87
6. Mary Hedricks, Raceland, 17.68

100m Dash

1. Serena Winkfield, Frankfort, 12.96
2. Virgie Dillingham, Madison, 13.25
3. Sharae Porter, Paris, 13.32
4. Meredith Kirkin, Harlan, 13.44
5. Holly Oldham, Ballard Memorial, 13.63
6. Michele Gray, Nicholas County, 13.71

800m Relay

1. Madison, 1:49.19
2. Bishop Brossart, 1:49.99
3. Bellevue, 1:50.51
4. Bath County, 1:50.53
5. Providence, 1:50.49
6. Bardstown, 1:51.8

1600m Run

1. Stephanie Edgar, Dayton, 5:14.6
2. Lasema Powell, Providence, 5:26.7
3. Denise Schank, St. Henry, 5:26.8
4. Kathy Bowen, Fairview, 5:33.1
5. Candy Belt, Providence, 5:34.3
6. Katie Sams, Ky. Country Day, 5:54.5

400m Relay

1. Madison, 51.59
2. Bellevue, 52.39
3. Harlan, 52.80
4. Bishop Brossart, 53.01
5. Murray, 53.41
6. Providence, 53.70

400m Dash

1. Serena Winkfield, Frankfort, 58.6
2. Renee Perkins, Bishop Brossart, 1:00.1
3. Becky Peace, Williamsburg, 1:00.5
4. Tawanna Jones, Providence, 1:01.4
5. Tracy Gilmore, West Hopkins, 1:03.0
6. Cherie Hendrick, Bath County, 1:03.1

300m Hurdles

1. Barbie Case, Bellevue, 46.6
2. Michelle Ray, Ballard Memorial, 47.9
3. Connie Lawson, Bath County, 48.5
4. Theresa Woeste, Bishop Brossart, 50.5
5. Angie Shelley, Williamsburg, 51.2
6. Jacquetta Jackson, Madison, 51.3

800m Run

1. Mary Dwyer, St. Henry, 2:16.7
2. Adrienne Mason, Providence, 2:23.1
3. Katie Sams, Ky. Country Day, 2:28.7
4. Serena Winkfield, Frankfort, 2:30.0
5. Melody Bryant, Menifee County, 2:30.5
6. Candy Belt, Providence, 2:31.2

200m Dash

1. Serena Winkfield, Frankfort, 26.49
2. Barbie Case, Bellevue, 26.89
3. Virgie Dillingham, Madison, 27.12
4. Tawanna Jones, Providence, 27.43
5. Vidia Fowler, Providence, 28.34
6. Vickie Hamilton, Bardstown, 28.40

3200m Run

1. Stephanie Edgar, Dayton, 11:38.8
2. Amy Clement, St. Henry, 11:53.3
3. Lasema Powell, Providence, 12:03.9
4. Kathy Bowen, Fairview, 12:08.7
5. Mandy Walker, Providence, 12:57.7
6. Dana Tingler, Raceland, 12:58.9

1600m Relay

1. St. Henry, 4:12.63
2. Providence, 4:13.80
3. Bishop Brossart, 4:14.77
4. Ky. Country Day, 4:18.781
5. Bath County, 4:19.072
6. Fairview, 4:22.0

Shot Put

1. Debra Thomas, Oneida Baptist, 35'2.5
2. Lu Willis, Bath County, 33'6
3. Jackie Caldwell, Campbellsville, 33'4
4. Sandra Stamper, Menifee County, 32'7.5
5. Sonya Copeland, Providence, 31'4.5
6. Katrina Brooks, Providence, 31'4

Discus

1. Kathleen Miller, Williamsburg, 114'7
2. Lu Willis, Bath County, 102'7
3. Shelly Richardson, Paris, 99'11
4. Jenny Swope, Bellevue, 97'3
5. Debra Thomas, Oneida Baptist, 95'1
6. Sonya Copeland, Providence, 91'9

Long Jump

1. Barbie Case, Bellevue, 16'8
2. Lu Willis, Bath County, 15'11.5
3. Renee Short, Hazard, 15'10.75
4. Theresa Woeste, Bishop Brossart, 15'5
5. Kathleen Miller, Williamsburg, 14'10
6. Christel Bussell, Nicholas County, 14'1.75

High Jump

1. DeAnn Schroeder, Bishop Brossart, 5'2
2. Teryl Tucker, West Hopkins, 4'10
3. Ayanna Brown, Providence, 4'9
4. Sarah Bradburg, Ky. Country Day, 4'8
5. Dionne Barren, Jenkins, 4'8
6. Pam Wheatley, Ludlow, 4'8

TOTAL POINTS

Providence	60.00
Bishop Brossart	52.00
Bellevue	46.00
Madison	35.00
St. Henry	34.00
Frankfort	34.00
Bath County	29.00
Ky. Country Day	23.00
Ballard Memorial	20.00
Williamsburg	20.00
Dayton	20.00
Oneida Baptist	12.00
Paris	12.00
West Hopkins	10.00
Harlan	10.00
Fairview	9.00
Nicholas County	8.00
Menifee County	6.00
Bardstown	6.00
Hazard	6.00
Campbellsville	6.00
Jenkins	2.00
Murray	2.00
Raceland	2.00
Ludlow	1.00

BARDSTOWN HIGH SCHOOL - CLASS A BOYS

Kentucky High School Track Meet Lexington, Kentucky-May 30, 1987



Front Row (L to R): Robbie Cecil, Tyrone Graves, Mathew Hite, Chris Unton. Second Row: J.W. Matlingly-Coach, Jerry Unton, James Brewer, Ray Young, Michael Tongue.

110m High Hurdles

1. Donald Overstreet, St. Mary, 14.48
2. Tyrone Graves, Bardstown, 14.58
3. Doug Roberts, Ballard Memorial, 15.84
4. Bobby Ferguson, Bellevue, 15.86
5. Jimmy Thomas, Harlan, 15.92
6. Terry Yeast, Harrodsburg, 16.04

100m Dash

1. Laine Fomas, Paris, 11.11
2. Ron Green, Caverna, 11.38
3. Tim Cornett, Williamsburg, 11.41
4. Larry Harris, Paris, 11.44
5. Bryan Reed, Bath County, 11.59
6. Chris Williams, Campbellsville, 11.61

1600m Run

1. Bryan Mertens, Bellevue, 4:29.5
2. Jerry Huffman, Ky. School f/t Deaf, 4:30.6
3. John Steele, Bath County, 4:35.4
4. Sri Sundaram, Paintsville, 4:36.0
5. Cob Cunniff, Berea, 4:36.7
6. John Struss, Berea, 4:38.9

400m Relay

1. Paris, 43.79
2. Bardstown, 43.99
3. Williamsburg, 45.10
4. Harrodsburg, 45.17
5. Bath County, 45.55
6. Pikeville, 46.13

400m Dash

1. Laine Fomas, Paris, 49.86
2. Steve Bell, Russellville, 50.81
3. Travis McGuire, Harrodsburg, 50.92
4. Marshall Sublett, Caverna, 51.43
5. Thomas Oldfield, Bath County, 51.71
6. Steve Underwood, Harlan, 52.09

300m Low Hurdles

1. Donald Overstreet, St. Mary, 38.37
2. James Brewer, Bardstown, 38.43
3. Doug Roberts, Ballard Memorial, 39.05
4. Jimmy Thomas, Harlan, 40.71
5. Oave Sandlin, Ludlow, 40.95
6. Matt McNabb, Bath County, 41.45

800m Run

1. Andy Beutel, Ludlow, 2:01.1
2. Marc Estep, Harlan, 2:01.80
3. W.J. Hardin, Southwest Christian, 2:02.39

4. Paul Wilks, Bath County, 2:02.67
5. Cob Cunniff, Berea, 2:02.9
6. Chris Byrd, Harrodsburg, 2:04.2

200m Dash

1. Laine Fomas, Paris, 22.40
2. James Brewer, Bardstown, 22.56
3. Larry Harris, Paris, 23.11
4. Ron Green, Caverna, 23.26
5. Bryan Reed, Bath County, 23.29
6. Chris Williams, Campbellsville, 23.51

3200m Run

1. Jerry Huffman, Ky. School f/t Deaf, 10:06.3
2. James Westphal, Murray, 10:15.3
3. John Struss, Berea, 10:25.7
4. Bryan Mertens, Bellevue, 10:33.6
5. John Steele, Bath County, 10:41.8
6. Donald Roby, Everts, 10:55.7

1600m Relay

1. Ludlow, 3:27.13
2. Harrodsburg, 3:30.98
3. Bath County, 3:33.29
4. Ky. Country Day, 3:38.39
5. Pikeville, 3:39.13
6. Murray, 3:40.8

Shot Put

1. Joe Baker, Harlan, 50'9"
2. Brent Chumbley, Paris, 48'6"
3. Jim Reed, Bellevue, 45'4"
4. Greg Gentry, Elliott County, 44'11"
5. Jeff Denton, Caverna, 43'7"
6. Donnie Phillips, Crittenden County, 42'7.5"

Discus

1. Don Meyer, Ludlow, 151'3"
2. Sparky Robinson, Ballard Memorial, 135'9"
3. John Hall, Fleming Neon, 133'5"
4. Quincy Boner, Caverna, 128'1"
5. Matt Hite, Bardstown, 122'8"
6. Doug Meade, Jenkins, 122'3"

Pole Vault

1. David Vallandingham, Ludlow, 11'1"
2. Andy Werkman, Berea, 10'6"
3. Ryan Jones, Bath County, 10'6"
4. Andy Williamson, Pikeville, 10'6"
5. Ken Cosby, Providence, 10'
6. Robert Mason, Providence, 10'

Triple Jump

1. Marc Mumphrey, Carroll County, 48'2"
2. James Brewer, Bardstown, 46'9.5"
3. Tyrone Graves, Bardstown, 46'7.25"
4. Ron Green, Caverna, 44'1.5"
5. Miquel Yates, Harrodsburg, 41'10.25"
6. Jim Hornbuckle, Murray, 41'10"

Long Jump

1. Don Overstreet, St. Mary, 22'2.25"
2. James Brewer, Bardstown, 21'9.75"
3. Marc Mumphrey, Carroll County, 21'9.5"
4. Bobby Ferguson, Bellevue, 21'8.25"
5. Tyrone Graves, Bardstown, 21'6.25"
6. Ron Green, Caverna, 20'10.25"

High Jump

1. Donald Overstreet, St. Mary, 6'4"
2. Miquel Yates, Harrodsburg, 6'2"
3. Sam Liberatore, Bardstown, 6'
3. Jimmy Thomas, Harlan, 6'
3. Brennan Royalty, Jenkins, 6'
3. Scott Witte, Bellevue, 6'

TOTAL POINTS

Bardstown	61.25
Paris	58.00
Ludlow	42.00
St. Mary	40.00
Bath County	33.00
Bellevue	31.25
Harrodsburg	30.00
Harlan	28.25
Caverna	27.00
Ballard Memorial	20.00
Berea	19.00
Ky. School f/t Deaf	18.00
Carroll County	16.00
Williamsburg	12.00
Murray	10.00
Russellville	8.00
Pikeville	7.00
Fleming Neon	6.00
Southwest Christian	6.00
Jenkins	4.25
Paintsville	4.00
Ky. Country Day	4.00
Elliott County	4.00
Providence	3.00
Campbellsville	2.00
Everts	1.00
Crittenden County	1.00

DANVILLE HIGH SCHOOL - CLASS AA GIRLS

Kentucky High School Track Meet

Lexington, Kentucky-May 30, 1987



Front Row (L to R): Vicke Alcorn, Orenda Burgess, Tina Robinson, Sharon Woods, Katie Stamps, Susan Rankin. **Second Row:** Angela Taylor-Coach, Monica Clark, Keisha Tillman, Veanita Smith, Laquella Mitchell, Kenda Tompkins, Pam Clements.

100m Low Hurdles

1. Schoene Thomas, LaRue County, 15.10
2. Marcie Grimes, Calloway County, 15.40
3. Keisha Tillman, Danville, 15.45
5. Liesl Vongruenigen, Bourbon County, 17.27
5. Jamie Hendren, Mercer County, 17.06
6. Lisa Wilcox, Whitesburg, 17.34

100m Dash

1. Lydawn Rainwater, LaRue County, 12.21
2. Yolanda Davis, Fort Campbell, 12.78
3. Orenda Burgess, Danville, 12.89
4. Katie Hilton, Russell, 13.08
5. Carla Travis, Lloyd Memorial, 13.12
6. Marcia Grimes, Calloway County, 13.17

800m Relay

1. Fort Campbell, 1:45.19
2. Danville, 1:46.02
3. LaRue County, 1:46.47
4. Calloway County, 1:47.17
5. Harrison County, 1:50.06
6. East Carter, 1:51.29

1600m Run

1. Susan Rankin, Danville, 5:15.6
2. Katie Stamps, Danville, 5:18.8
3. Patricia Dowd, Fleming County, 5:22.7
4. Christy Hater, Newport Central Catholic, 5:34.5
5. Melissa Simms, Russell, 5:34.7
6. Kim Haluski, Fort Campbell, 5:35.5

400m Relay

1. Danville, 50.55
2. Fort Campbell, 50.79
3. Fort Knox, 51.87
4. Harrison County, 52.29
5. Warren East, 52.59
6. Newport Central Catholic, 52.7

400m Run

1. Lydawn Rainwater, LaRue County, 58.3
2. Michelle Wilson, Bullitt East, 58.7
3. Erica Muskgraw, Calloway County, 59.7
4. Terry Woods, Fort Campbell, 1:00.8
5. Pearly Green, Bourbon County, 1:02.2
6. Jackie Snyder, East Carter, 1:02.5

300m Hurdles

1. Michelle Wilson, Bullitt East, 34.34
2. Keisha Tillman, Danville, 46.76

3. Beverly Burton, Warren East, 47.08

4. Liesl Vongruenigen, Bourbon County, 49.66
5. Stephanie Proffitt, Whitesburg, 49.86
6. Michelle Rogers, Newport Central Catholic, 52.1

800m Run

1. Susan Rankin, Danville, 2:21.8
2. Pearly Green, Bourbon County, 2:24.5
3. Holly Townsend, Webster County, 2:25.4
4. Kathleen Lewis, Elizabethtown, 2:25.5
5. Peggianna Snook, Western Hills, 2:27.0
6. Tresca Tyler, Trigg County, 2:31.8

200m Dash

1. Lydawn Rainwater, LaRue County, 25.07
2. Erica Muskgraw, Calloway County, 26.34
3. Michelle Wilson, Bullitt East, 26.37
4. Marcia Grimes, Calloway County, 26.74
5. DeeDee Warfield, Bourbon County, 26.93
6. Carla Travis, Lloyd Memorial, 27.2

3200m Run

1. Katie Stamps, Danville, 11:36.20
2. Patricia Dowd, Fleming County, 11:37.02
3. Candy Reid, Fort Campbell, 11:55.64
4. Debbie Finke, Danville, 11:58.87
5. Kristen Edwards, Warren East, 12:26.2
6. Angie Franks, Grant County, 12:36.6

1600m Relay

1. Fort Campbell, 4:08.14
2. Danville, 4:10.09
3. Somerset, 4:13.6
4. Barren County, 4:17.04
5. Newport Central Catholic, 4:20.60
6. East Carter, 4:23.8

Shot Put

1. Pam Clemments, Danville, 38'5
2. Eushieka Payne, Calloway County, 34'7.5
3. Stephanie Penny, Anderson County, 33'8.5
4. Kim Deerfield, East Carter, 32'10
5. Julie Magrane, Rowan County, 32'9.5
6. Tracy Childers, Barren County, 32'9.5

Discus

1. Julie Magrane, Rowan County, 128'4
2. Pam Clemments, Danville, 114'2
3. Kim Thomas, Barren County, 89'1
4. Becky Vinson, Lawrence County, 94'5
5. Cindy Frost, Newport, 92'6
6. Jackie Estes, Heath, 91'0

Long Jump

1. Lynn Eskridge, Fort Knox, 18'3
2. Schoene Thomas, LaRue County, 16'10.25
3. Erica Muskgraw, Calloway County, 16'5.75
4. Chrissy O'Brien, Highlands, 15'10.5
5. Jane England, Monroe County, 15'7.25
6. Randi Dyerly, Rowan County, 15'4.5

High Jump

1. Lauren Cammack, Harrison County, 5'5
2. Beverly Burton, Warren East, 5'5
3. Michelle Stubblefield, Calloway County, 5'4
4. Glenna Easterling, Russell, 5'1
5. Schoene Thomas, LaRue County, 5'
6. Chrissy O'Brien, Highlands, 4'10

TOTAL POINTS

Danville	106.00
LaRue County	56.00
Calloway County	51.00
Fort Campbell	47.00
Bullitt East	24.00
Warren East	18.00
Bourbon County	18.00
Harrison County	16.00
Fort Knox	16.00
Fleming County	14.00
Rowan County	13.00
Barren County	11.00
Russell	10.00
Newport Central Catholic	8.00
East Carter	7.00
Webster County	6.00
Somerset	6.00
Anderson County	6.00
Highlands	5.00
Lawrence County	4.00
Elizabethtown	4.00
Whitesburg	3.00
Lloyd Memorial	3.00
Western Hills	2.00
Newport	2.00
Monroe County	2.00
Mercer County	2.00
Trigg County	1.00
Grant County	1.00
Heath	1.00

BASKETBALL OPEN DATES

December 15, January 5, January 29, Western Hills High School is looking for boys' basketball games (home or away). Contact Coach Harold Miller, (502)875-2900.

January 5-8, 1988, 4th Annual Bath County High School New Year Classic, needs four boys' teams to complete the field. Contact Coach Roy Wright (606)674-6236 (school) or (606)674-2469 (home).

January 27-30, 1988, Boone County High School needs one girls' team for an eight (8) team tournament, contact Coach Nell Hensley (606)283-2795.

February 19 and February 26, 1988, St. Xavier, contact Paul Young (502)635-5300

A.C.T. TEST DATES FOR 1987-88

With the implementation of the NCAA Minimum Eligibility Guidelines, it is important to keep up with the test dates for the American College Testing Assessment (ACT test). For 1987-88, the schedule is as follows:

<u>1987-88 Test Date</u>	<u>Regular Postmark Deadline</u>	<u>Late Deadline</u>
10/24/87	09/25/87	10/13/87
12/12/87	11/13/87	12/01/87
02/27/88	01/29/88	02/16/88
04/16/88	03/18/88	04/05/88
06/11/88	05/13/88	05/31/88

IMPORTANT CHANGE IN INSURANCE COVERAGE RELATIVE TO CHEERLEADERS

Thus far, the Kentucky High School Athletic Association has been able to maintain liability and catastrophic insurance coverage for cheerleaders through the existing policy at no additional charge to the Association or the schools. In an effort to hold down the costs of insurance, the K.H.S.A.A. Board of Control recently adopted the following guidelines for limitations on cheerleader stunts which have been determined to be high risk -- 1) No mini trampolines or other height increasing apparatus allowed; 2) No flip dismounts from mounts (pyramids); 3) No knee drops; 4) No toe or thigh pitches; 5) No mount may be more than two people high, interpreted as follows: (a) Any person in a mount must have principle weight supported by a person whose principle weight support is the floor, (b) Additional persons used in the mount for support may not extend above the mount itself; 6) All maneuvers of the "swan dive" variety are not allowed.

Cheerleaders are subject to the general eligibility requirements of the Association to participate. This includes, but is not limited to, parental permission, enrollment and academic requirements, and a signed physician's statement to the effect he/she is physically fit to take severe exercise without undue risk.

These stunt limitations are only recommendations, however, cheerleaders from schools not adhering to these guidelines will not be covered by the blanket insurance plan and may have to seek additional coverage elsewhere.

The following officials have not attended a regular or make-up clinic in football and should not be assigned to contests until they have attended an approved make-up clinic.

Adkins, Thomas 'Butch' (Lexington)
Allen, James F. (Loyall)
Allen, Ronald N. (Louisville)
Anderson, Jeff (Pikeville)
Barbour, Lonnie R. (Louisville)
Bates, J. R. (Ermine)
Beal, James F. (Casey Creek)
Begley, C. W. (Hazard)
Bell, Sr., Ronald Keith (Nicholasville)
Bennett, Joe (Woodbine)
Bigg, George M. (Hazard)
Binion, James W. (Philpot)
Bishop, Elmer (Waynesburg)
Bogar, Joseph D. (Hardy)
Bosse, Raymond C. (Fort Wright)
Brandenburgh, Jr., William A. (Cincinnati)
Gelbke, Gil (Fort Thomas)
Brewer, Marvin (Kenvir)
Brock, Jack (Richmond)
Brotzge, Robert A. (Louisville)
Brown, III, Hiram T. (Lexington)
Bryan, Frank D. (Elizabethtown)
Bush, Steven R. (Louisville)
Carden, Michael H. (Mayfield)
Cato, Robert E. (London)
Chaney, Dean A. (Pine Knot)
Clark, David (Morehead)
Clark, Dennis (Barbourville)
Clark, Steve (Nicholasville)
Clouse, Daniel (Gus) (Corbin)
Coleman, Louis H. (Louisville)
Conlin, Martin T. (Cary)
Couch, Keith (Jackson)
Crisp, Gary A. (Prestonsburg)
Croley, Jerry Wayne (Williamsburg)
Crowley, Boyce (Symsonia)
Crutcher, Marion (Vine Grove)
Davis, Larry W. (Barbourville)
Day, David DB. (Independence)
Dixon, Ron (Ashland)
Donley, Gregor S. (East Point)
Dotson, Ransom E. (Mt. Sterling)
Douglas, Randall K. (Richmond)
Downing, Brooks D. (Lexington)
Easterly, Mark Charles (Mayfield)
Easton, Brian R. (Morehead)
Evans, Ronnie B. (Russell)
Felty, Michael J. (Ashland)
Ferrell, Ronnie D. (Williamson)
Ferry, Marvin P. (Louisville)
Fleming, Herbert W. (Jackhorn)
Ford, John W. (Radcliff)
Fortune, William E. (Henderson)
Fuchs, Charles (Dayton)
Garris, Kevin (Pikeville)
Graf,, Jr., John C. (Louisville)
Grandgeorge, David R. (Berea)
Griffith, Keith (Paducah)
Gupton, George E. (Greensburg)
Gutterman, James D. (Louisville)
Hackett, Jr., Wilbur L. (Louisville)
Hall, Charles E. (Danville)
Handy, Thomas V. (London)
Hankins, III, William R. (Louisville)
Harlan, Tony (Glasgow)
Harris, Bobby G. (Fort Knox)
Harris, Steven L. (Paducah)
Hayden, Darryl (Henderson)
Hendrickson, Kevin (Catlettsburg)
Herald, Thomas A. (Florence)
Herbstreith, Terry L (Louisville)
Hill, William Roger (Nicholasville)
Hollingsworth, Ralph D. (Springfield)
Hunt, John Michael (Prestonsburg)
Iannazzi, Domenic (Indianapolis)
Jackson, Donald L. (Evarts)
Janssen, Jan L. (Mayfield)
Jones, Paul D. (Louisville)
Jude, Lowell E. (Winchester)
Kirk, Charles F. (Craig)
Lambert, Gerald E. (Williamson)
Latimer, Richard H. (Jeffersonville)
Leland, Lonnie L. (Versailles)
Lewis, Arthur Lee (Fort Knox)
Lewis, Jr., Johnnie D. (Pineville)
Liggett, Ernest J. (Middletown)
Lillie, Wes (Louisville)
Litton, John L. (Ashland)
Long, Scottie J. (Henderson)
Lopez, Bill (Louisville)
Lynch, Lester F. (Elizabethtown)
Marr, Steve (Franklin)
Martin, William R. (Worthington)
Mason, Walter C. (Elizabethtown)
Mason, Wardy C. (Lexington)
McBride, Charles B. (Florence)
McCourt, Lowell A. (Georgetown)
McDaniel, William N. (Frankfort)

McFalls, Garry R. (APO)
McGuire, Jr., Billy (Hopkinsville)
McManaway, Greg (Wilmore)
McMillan, George (Ironton)
Meehan, Michael E. (Lexington)
Meehan, Patrick M. (Louisville)
Miller, Joseph D. (Newport)
Moberly, Bennie (Richmond)
Moody, David R. (Louisville)
Morkin, Kieron M. (Lexington)
Napier, Carl Orlee (Evarts)
Nelligan, Michael L. (Louisville)
Niemann, Thomas A. (Louisville)
Obert, William Joseph (Cincinnati)
Owsley, Robert T. (Lexington)
Parnell, Ricky (Hickman)
Parsons, III, Paul B. (Harlan)
Percell, Danny (Elizabethtown)
Perry, M. E. (Bowling Green)
Poynter, Charles J. (Granger)
Puckett, Bryan W. (Bowling Green)
Purcell, J. Kenneth (Murray)
Rainey, Michael S. (Louisville)
Rawdon, Dick (Georgetown)
Ray, Lanny (Lancaster)
Read, Frederick K. (St. Charles)
Reed, Gary L. (Taylor Mill)
Reeves, Michael (Vine Grove)
Restuccia, Anthony J. (Louisville)
Reynolds, Jr., Donald Lee (Williamstown)
Rhea, Robert W. (Harlan)
Richard, III, P.S. (Somerset)
Riley, Larry P. (East Bernstadt)
Rollins, George Luke (Pinetop)
Rowe, Boyd (Whitley City)
Ruebusch, Mike (Taylor Mill)
Russell, Phillip Ray (Corbin)
Sandefur, Joseph R. (Florence)
Sanford, Ronnie (Louisville)
Saragas, Takis (Harlan)
Seargent, Charles R. (Louisville)
Shepherd, James Michael (Cumberland)
Slayton, Joe (Hazel Crest)
Smith, Chris (Pikeville)
Smith, John D. (Louisville)
Snively, Jr., Allen (Chip) (Louisville)
Soublo, Danny (Coalgood)
Spurling, SFC James (APO)
Staggs, Robert E. (Pikeville)
Steele, Herman E. (Corbin)
Stein, Matt (Louisville)
Stevens, Ralph L. (Princeton)

Stuber, Charles (London)
Swinford, John (Cynthiana)
Sykes, James E. (Huntington)
Tackett, James F. (Jenkins)
Tate, Ken (Lexington)
Taylor, Tony J. (Topmost)
Trawinski, Allan (Fort Campbell)
Turner, Gilbert V. (Walton)
Turner, Ronald Lee (Louisville)
Vest, Ben (Danville)
Wallace, Andre T. (Lexington)
Welton, Donald L. (APO San Francisco)
Wilkerson, Ronald (Shepherdsville)
Williams, Jr., Buford W. (Jackson)
Wiseman, Kenneth A. (Louisville)
Woods, Michael G. (Louisville)

The following coaches have not attended a regular or make-up clinic in football, and will not be able to coach in K.H.S.A.A. post-season competition until attending an approved make-up clinic.

Adair County (John Peck)
Allen County-Scottsville (Charles Smith)
Bell County (Dudley Hilton)
Boyle County (Ed Rall)
Bullitt East (Mike Egan)
Estill County (Hoover Niece)
Greenup County (Danny Mercer)
LaRue County (John Sullivan)
Lafayette (Tom Fee)
Lawrence County (Bill Goldsmith)
M. M. I. (Bart Rigg)
Murray (Jack Cain)
Owen County (David Pollitte)
Paintsville (Walter Brugh)
Paris (Roger Gruniesen)
Paul Blazer (Vic Marsh)
Prestonsburg (Charles Williams)
Sheldon Clark (Jim Matney)
South Hopkins (Jay Cobb)
Tates Creek (Roy Walton)
Trinity (Dennis Lampley)
Wayne County (George Hatcher)
Woodford County (Dan Cassity)

IMPORTANT DATES FOR 1987-88

The following are the starting dates for the K.H.S.A.A. sponsored events, along with the first day of practice.

Sport	First Practice	First Contest	Num. Games Allowed	State Finals (Tentative)
Soccer	July 20	Aug. 24	6-20	Nov. 7
Cross Country	July 15	Sept. 1	4-15	Nov. 7
Volleyball	July 15	Sept. 1	20	Oct. 31
Football	Aug. 1	Aug. 21	11	Nov. 27-28
Wrestling	Oct. 15	Dec. 1	4-23	Feb. 20
Swimming	Oct. 1	Nov. 15	15	Feb. 26/27
Basketball				
non football	Oct. 1	Nov. 15	24	Mar. 21/28
football	Oct. 15	Nov. 30	24	Mar. 21/28
Track	Dec. 1	Apr. 1	4-15	May 28
Softball	Feb. 15	Apr. 1	35	May 28
Golf	Feb. 15	Apr. 1	20	June 1/2
Tennis	Feb. 15	Apr. 1	4-20	June 2/4
Baseball	Feb. 15	Apr. 1	35	June 4

These dates are as printed on the 1987-88 Memorandum Calendar, with the exception of the state wrestling meet which was changed by a decision of the Board of Control at its July, 1987 meeting.

SANCTIONS FOR CONTESTS INVOLVING OUT OF STATE TEAMS

Many questions arise when a member school attempts to schedule a game against a team from another state. Remember that the contest must go through the proper administrative channels to be considered a legal contest. The following can serve as a simple guide to athletic directors and principals --

If a game involves only one Kentucky school and one out of state school, and the other state adjoins Kentucky, no state Association or National Federation sanction is necessary;

If a meet or tournament involves one or more teams from outside the host state, and the invited teams are from adjoining state(s), National Federation sanction is not necessary. However the event must be sanctioned by the state Associations involved. It is the responsibility of the principal of the host school to initiate the sanction procedure;

In all other cases, both state Association and National Federation sanction is required. If you are the host school, contact the Kentucky High School Athletic Association to obtain the sanction forms and begin the sanction process. The sanction process must be completed thirty (30) days prior to the event.

FORT KNOX HIGH SCHOOL - CLASS AA BOYS

Kentucky High School Track Meet

Lexington, Kentucky-May 30, 1987



Front Row (L to R): Daniel Green, Joey Randall, Eddie Thompson, Stats.-Gwen Hill, Mark Tuhill, John Matt. **Second Row:** Larry Benz-Trainer, Mike McCoy-Coach, Myles Hendricks, Darrell Harris, Leon Larry, Anthony Smith, Rod Massey, Dave Shufelt-Coach.

110m High Hurdles

1. Roddre' Massey, Fort Knox, 14.87
2. Jerry Moss, Fort Campbell, 14.97
3. Terry Moss, Fort Campbell, 15.12
4. Joey David, Russell, 15.75
5. Wes Davis, Russell, 15.84
6. Steve Battershell, Newport Central Catholic, 16.09

100m Dash

1. Gregg Bridges, Trigg County, 11.24
2. Troy McCowan, Danville, 11.38
3. Anthony Higgins, Harrison County, 11.39
4. Kelly Maxey, Monroe County, 11.63
5. Wes Davis, Russell, 11.66
6. Chris Smith, West Carter, 11.88

1600m Run

1. Himmy Herald, Warren East, 4:18.2
2. Jeff Moll, Lexington Catholic, 4:19.3
3. Mike Hunter, Highlands, 4:29.8
4. Ed Whitte, Danville, 4:31.2
5. Brian Binon, Rowan County, 4:31.5
6. Mark Thomas, Fleming County, 4:34.9

400m Relay

1. Fort Campbell, 43.87
2. Mayfield, 44.29
3. Danville, 44.57
4. Fort Knox, 44.58
5. Russell, 45.28
6. Mason County, 45.32

400m Dash

1. Larry Jackson, Mayfield, 48.95
2. Joe Randall, Fort Knox, 50.26
3. Maurice Tillie, Fort Campbell, 50.99
4. Richard Fields, Harrison County, 51.25
5. Jeffrey Jackson, Harrison County, 51.8
6. Chris Smith, West Carter, 52.0

300m Low Hurdles

1. Roddre' Massey, Fort Knox, 37.54
2. Joey David, Russell, 38.47
3. Scott Rothmann, Fort Campbell, 41.14
4. Henry Bowling, McLean County, 41.75
5. Corey Wright, Mason County, 41.8
6. Steve Battershell, Newport Central Catholic, 42.0

800m Run

1. Larry Jackson, Mayfield, 1:56.3
2. Mike Hunter, Highlands, 1:58.6

3. Maurice Tillie, Fort Campbell, 1:58.7
4. T.J. Churchill, Elizabethtown, 2:02.5
5. Terry Bishop, Green County, 2:03.3
6. Brent Cooper, Rowan County, 2:05.8

200m Dash

1. Gregg Bridges, Trigg County, 22.69
2. Anthony Higgins, Harrison County, 23.14
3. Neal Brawner, East Hardin, 23.28
4. Kelly Maxey, Monroe County, 23.55
5. Juan Davis, Mason County, 23.6
6. Shane Gasser, Harrison County, 23.61

3200m Run

1. Jimmy Herald, Warren East, 9:35.8
2. Eric Ezell, Trigg County, 9:37.5
3. Jeremy Egelston, Rowan County, 10:05.7
4. Ed Whitte, Danville, 10:09.0
5. Shawn Pawsatt, Highlands, 10:26.9
6. Patrick Hayden, West Hardin, 10:28.8

1600m Relay

1. Fort Knox, 3:24.98
2. Danville, 3:29.23
3. Harrison County, 3:30.83
4. Fort Campbell, 3:30.93
5. Russell, 3:30.94
6. Highlands, 3:34.97

Shot Put

1. Greg Armstrong, Heath, 49'2
2. Mike Potter, Knott County, 47'5.5
3. Robbie Phillips, Boyle County, 45'1.5
4. Leon Larry, Fort Knox, 44'8
5. John Terhune, Lexington Catholic, 44'3.5
6. David Hoffman, Highlands, 44'2

Discus

1. Dave Johnson, Barren County, 166'9
2. Joey McArry, Bourbon County, 143'11
3. Charles Adaway, Fort Campbell, 138'5
4. John Terhune, Lexington Catholic, 135'7
5. Tom Bauer, Danville, 130'1
6. Billy Rosenberg, Rowan County, 124'6

Pole Vault

1. Rob Pinkston, Highlands, 13'6
2. Mark Henderson, Calloway County, 13'
3. Russell Schweighar, Anderson County, 12'6
4. Nathan Brown, Russell, 11'6
5. Brad Maynard, Barren County, 11'6
6. Sherman Holliday, Knott County, 10'8

Triple Jump

1. Anthony Smith, Fort Knox, 47'
2. Darrell Harris, Fort Knox, 44'8.5
3. Richard Fields, Harrison County, 43'7.75
4. Jamie Jones, Heath, 43'6.5
5. Kenny Huddelston, Russell, 41'7.5
6. Hugh Johnson, West Carter, 41'2.5

Long Jump

1. Fred Jones, Calloway County, 21'8.5
2. Richard Fields, Harrison County, 21'4
3. Eric Martin, Warren East, 21'3.75
4. Kenny Sinkhorn, East Hardin, 20'11.5
5. Drew Muntz, Harrison County, 20'8.75
6. Hugh Johnson, West Carter, 20'3.75

High Jump

1. Drew Muntz, Harrison County, 6'6
2. Anthony Smith, Fort Knox, 6'5
3. Ray Porter, West Carter, 6'3
4. Darrell Harris, Fort Knox, 6'2
4. Tom Noe, Highlands, 6'2
6. Tony Weinfurter, Russell, 6'

TOTAL POINTS

Fort Knox	75.00
Harrison County	53.00
Fort Campbell	52.00
Highlands	32.00
Danville	32.00
Trigg County	28.00
Mayfield	28.00
Russell	27.00
Warren East	26.00
Calloway County	18.00
Lexington Catholic	18.00
Heath	14.00
Barren County	12.00
Rowan County	10.00
East Hardin	10.00
West Carter	10.00
Knott County	9.00
Monroe County	8.00
Bourbon County	8.00
Anderson County	6.00
Boyle County	6.00
Mason County	5.00
McLean County	4.00
Elizabethtown	4.00
Green County	2.00
Newport Central Catholic	2.00
Fleming County	1.00
West Hardin	1.00

BRYAN STATION HIGH SCHOOL - CLASS AAA GIRLS

Kentucky High School Track Meet

Lexington, Kentucky-May 30, 1987



Front Row (L to R): Erica Gill, Denise Williams, Marsha Jackson, Roanetta Byrd. Second Row: Janice Jackson, Renee Kitzpatrick, Riba Woodall-Coach, Riobbin Washington. Third Row: Jacenita Webb, Phaedra Washington, Sherry Jackson, Michelle Brown.

100m Low Hurdles

1. Celia Tyson, Oldham County, 14.91
2. Stacey Henry, Paul Blazer, 14.96
3. Sheuna Papp, Seneca, 15.98
4. Stephanie Cordell, Pulaski County, 15.51
5. Missy Adams, Scott, 15.74
6. Chris Schimmoeiler, Woodford County, 15.84

100m Dash

1. Sonia Wharton, Moore, 12.31
2. Bobby Jefferson, Paducah Tilghman, 12.34
3. Lisa Brown, Central, 12.54
4. Alicon Barney, Henry Clay, 12.81
5. Celia Tyson, Oldham County, 12.82
6. Robin Washington, Bryan Station, 12.88

800m Relay

1. Bryan Station, 1:42.47
2. Moore, 1:44.08
3. Central, 1:45.15
4. Paducah Tilghman, 1:46.09
5. Franklin County, 1:46.29
6. Union County, 1:48.90

1600m Run

1. Wendy Frazier, Henry Clay, 5:03
2. Jill Nicholson, Boone County, 5:13.6
3. Cybil O'Nan, Oldham County, 5:16.4
4. Melane Trimble, Boyd County, 5:20.7
5. Melissa Amari, Lafayette, 5:26.2
6. Sonya McKinney, Bullitt Central, 5:35.4

400m Relay

1. Bryan Station, 48.92
2. Moore, 49.65
3. Paducah Tilghman, 49.83
4. Shawnee, 50.17
5. Franklin County, 50.52
6. Conner, 51.35

400m Dash

1. Alicon Barney, Henry Clay, 56.89
2. Angie Rohrscheln, Davess County, 58.59
3. Tasha Withers, Valley, 58.81
4. Robin Washington, Bryan Station, 58.63
5. Sheri Whitlock, Butler, 58.79
6. Jackie Barrow, Paul Blazer, 1:00.43

300m Hurdles

1. Celia Tyson, Oldham County, 43.77
2. Shelinda Parr, Seneca, 45.46
3. Tonia Ward, Paducah Tilghman, 46.9

4. Stephanie Cordell, Pulaski County, 47.37
5. Chris Schimmoeiler, Woodford County, 47.41
6. Juanta Williams, Waggener, 47.45

800m Run

1. Jill Nickerson, Boone County, 2:22.2
2. Krista Roberts, Boyd County, 2:23.2
3. Sonya McKinney, Bullitt Central, 2:25.8
4. Kim Andres, Southern, 2:26.1
5. Carol Shade, Henderson County, 2:27.7
6. Denise Crum, Jessamine County, 2:27.8

200m Dash

1. Sonia Wharton, Moore, 25.18
2. Bobby Jefferson, Paducah Tilghman, 25.48
3. Lisa Brown, Central, 25.65
4. Alicon Barney, Henry Clay, 25.69
5. Celia Tyson, Oldham County, 26.03
6. Felicia Upton, Pulaski County, 26.67

3200m Run

1. Wendy Frazier, Henry Clay, 11:06.35
2. Melissa Amari, Lafayette, 11:49.02
3. Melane Trimble, Boyd County, 11:54.88
4. Paula Kelley, Boyd County, 11:57.88
5. Cindy Walker, Warren Central, 12:08.79
6. Chris Donofrio, Eastern, 12:39.3

1600m Relay

1. Seneca, 4:01.5
2. Eastern, 4:05.9
3. Henderson County, 4:08.3
4. Davess County, 4:12.3
5. Boone County, 4:13.6
6. Pulaski County, 4:17.3

Shot Put

1. Phaedra Washington, Bryan Station, 40'2
2. Lori Rakes, Boyd County, 37'
3. Erika Gill, Bryan Station, 34'5.5
4. Tabitha Pruitt, Johnson Central, 34'3
5. April Suggs, Henderson Central, 34'1.5
6. Armeida Howard, Owensboro, 34'5

Discus

1. Phaedra Washington, Bryan Station, 118'10
2. Marissa Pace, Paducah Tilghman, 116'11
3. Tammie Henson, Clay County, 111'0
4. Janet McKechnie, Henderson County, 101'1
5. Lori Rakes, Boyd County, 99'
6. Yvette Wilson, Ballard, 98'4

Long Jump

1. Roanetta Byrd, Bryan Station, 18'2.5
2. Tammie Henson, Clay County, 17'0
3. Susan Sargeant, Eastern, 16'10.5
4. Sharonda O'Bannon, Male, 16'8.75
5. Missy Carolin, Montgomery County, 16'5.5
6. Loretta Anderson, Bowling Green, 16'4.5

High Jump

1. Lisa Morrison, Boone County, 5'6
2. Megan Young, Montgomery County, 5'4
3. Michelle Jackson, Jeffersontown, 5'4
4. Alicon Barney, Henry Clay, 5'3
5. Debbie Asher, Laurel County, 5'2
6. Susan Sargeant, Eastern, 5'

TOTAL POINTS

Bryan Station	61.00
Henry Clay	42.00
Paducah Tilghman	40.00
Moore	36.00
Boyd County	32.00
Oldham County	30.00
Boone County	30.00
Seneca	24.00
Central	18.00
Eastern	16.00
Henderson County	14.00
Clay County	14.00
Davess County	12.00
Lafayette	10.00
Pulaski County	10.00
Montgomery County	10.00
Paul Blazer	9.00
Bullitt Central	7.00
Valley	6.00
Jeffersontown	6.00
Southern	4.00
Shawnee	4.00
Male	4.00
Johnson Central	4.00
Franklin County	4.00
Woodford County	3.00
Butler	2.00
Laurel County	2.00
Scott	2.00
Warren Central	2.00
Ballard	1.00
Union County	1.00
Jessamine County	1.00
Waggener	1.00
Owensboro	1.00
Bowling Green	1.00
Conner	1.00

PADUCAH TILGHMAN HIGH SCHOOL - CLASS AAA BOYS**Kentucky High School Track Meet****Lexington, Kentucky-May 30, 1987**

Front Row (L to R): Burton Gregory, Marcus White, Jemo Mayes, Billy Swanson, Neal Clark, Michael Shea Jones, David D. Jones, James Thomas Johnson, Jr. **Second Row:** Lyman Brown-Coach, Junior Palmer, Larry Allen, Michael Randall Wyatt, Kurt Johnson, Anton Thomas, Diamond Tyler, Steve Johnson, Carl Trella, Angie Schuller.

110m High Hurdles

1. Larry August, Lafayette, 15.08
2. David Jones, Paducah Tilghman, 15.19
3. Stephan Kirby, Iroquois, 15.25
4. Greg Bright, Daviess County, 15.32
5. Joe Myers, Holy Cross (Louisville), 15.68
6. Matt Entwzeller, Campbell County, 15.81

100m Dash

1. Randy Wyatt, Paducah Tilghman, 10.75
2. Scott Terry, Henderson County, 10.83
3. Victor Johnson, Lafayette, 10.92
4. Aaron Payne, Holy Cross (Louisville), 10.92
5. Chris Prewitt, Lafayette, 11.08
6. Cameron Hawkins, Seneca, 11.11

1600m Run

1. Paul Hamilton, Jessamine County, 4:16.64
2. Dan Kelley, Franklin County, 4:16.61
3. Carl Dillard, Christian County, 4:25.43
4. Neal Clark, Paducah Tilghman, 4:25.98
5. Mike Esterle, Trinity (Louisville), 4:27.02
6. Scott Geiske, Covington Catholic, 4:31.24

400m Relay

1. North Hardin, 42.70
2. Henderson County, 42.84
3. Male, 43.16
4. Eastern, 43.52
5. Bryan Station, 43.93
6. Boone County, 44.04

400m Dash

1. Randy Wyatt, Paducah Tilghman, 48.21
2. Kevin Reed, Bryan Station, 48.64
3. Larry Kinnard, Iroquois, 48.79
4. Joe Ferguson, Oldham County, 50.06
5. Ceph Shontee, Eastern, 50.16
6. Tony Taylor, Boone County, 50.7

300m Hurdles

1. Lee Willingham, Owensboro, 37.79
2. Chris Prewitt, Lafayette, 38.3
3. Eric Sprattley, Western, 38.8
4. George Hodge, North Bullitt, 39.08
5. Stephan Kirby, Iroquois, 39.11
6. Martez Marshall, Holmes, 40.25

800m Run

1. Carl Dillard, Christian County, 1:55.52
2. Lee Alvey, Warren Central, 1:55.99
3. John Rhodus, Bryan Station, 1:58.82
4. Troy Hammond, Simon Kenton, 1:59.70
5. Paul Hamilton, Jessamine County, 2:00.20
6. Nathan Boyd, Boyd County, 2:00.6

200m Dash

1. Randy Wyatt, Paducah Tilghman, 21.82

2. Scott Terry, Henderson County, 22.13

3. Victor Johnson, Lafayette, 22.15
4. Aaron Payne, Holy Cross (Louisville), 22.22
5. Cameron Hawkins, Seneca, 22.40
6. Larry May, Montgomery County, 23.96

3200m Run

1. Jeff Plank, Conner, 9:38.6
2. Paul Hamilton, Jessamine County, 9:41.9
3. Jemo Mayes, Paducah Tilghman, 9:56.8
4. Paul Lonneman, Covington Catholic, 10:02.8
5. Neal Clark, Paducah Tilghman, 10:07.7
6. Quinton Marks, Bryan Station, 10:19.4

1600m Relay

1. Eastern, 3:21.48
2. Henderson County, 3:23.78
3. Iroquois, 3:23.99
4. Bryan Station, 3:26.12
5. Lafayette, 3:27.1
6. Boone County, 3:28.9

Shot Put

1. Ernest Thompson, Laurel County, 56'3.5
2. Mike Jones, Paducah Tilghman, 56'1.5
3. Billy Swanson, Paducah Tilghman, 54'5.5
4. Jeff Hall, George Rogers Clark, 50'4
5. Chuck Bradley, Fern Creek, 47'11.5
6. Tim Keller, Covington Catholic, 47'9.5

Discus

1. Ernest Thompson, Laurel County, 160'
2. Steve Leonard, Daviess County, 153'4
3. Eric McCrickard, Lafayette, 151'5
4. Larry Gilnett, Oldham County, 147'9
5. William Doyle, DuPont Manual, 142'1
6. Chris Henry, Doss, 138'9.5

Pole Vault

1. Dean McCoy, Covington Catholic, 12'6
2. Adam Smith, Daviess County, 12'6
3. Matt Morgan, Oldham County, 12'
4. Steve Gravette, St. Xavier, 12'
5. Bart Patenaude, Trinity (Louisville), 11'
6. Tony Weber, St. Xavier, 11'

Triple Jump

1. Sterling Ward, Bryan Station, 48'10.5
2. Kurt Johnson, Paducah Tilghman, 48'6.75
3. Larry Kinnard, Iroquois, 47'2.25
4. Dee Smith, Madison Central, 44'1.5
5. David King, Johnson Central, 42'7.75
6. John Franklin, Covington Catholic, 41'7

Long Jump

1. Xavier Gregory, Knox Central, 23'2.25
2. Desmond Porter, Pleasure Ridge Park, 22'1.75

3. Ron Railey, Marion County, 22'1.5

4. Larry Kinnard, Iroquois, 21'8
5. Phillip Hodge, Madisonville, 21'5.5
6. Sterling Ward, Bryan Station, 21'4.25

High Jump

1. Paul Ray, Christian County, 6'10.5
2. Chris Roberts, Woodford County, 6'8
3. Brad Nee, Waggener, 6'6
4. Bill Hatenkotter, Scott, 6'5
5. Bob Gross, Paducah Tilghman, 6'2
6. Charles Hughes, Holmes, 6'

TOTAL POINTS

Paducah Tilghman	74.00
Lafayette	40.00
Bryan Station	32.00
Henderson County	32.00
Iroquois	30.00
Christian County	28.00
Daviess County	20.00
Jessamine County	20.00
Laurel County	20.00
Covington Catholic	17.00
Eastern	16.00
Oldham County	14.00
Knox Central	10.00
North Hardin	10.00
Conner	10.00
Owensboro	10.00
Holy Cross (Louisville)	10.00
Warren Central	8.00
Pleasure Ridge Park	8.00
Woodford County	8.00
Franklin County	8.00
Western	6.00
Waggener	6.00
Marion County	6.00
Male	6.00
St. Xavier	5.00
Trinity (Louisville)	5.00
North Bullitt	4.00
Scott	4.00
George Rogers Clark	4.00
Madison Central	4.00
Simon Kenton	4.00
Seneca	3.00
Boone County	3.00
DuPont Manual	2.00
Holmes	2.00
Madisonville	2.00
Fern Creek	2.00
Johnson Central	2.00
Boyd County	1.00
Campbell County	1.00
Doss	1.00
Montgomery County	1.00

**NEWS
RELEASE****Educational Benefits Of Activities Stressed
During National High School Activities Week**

Merlin Olsen and his mother, Mrs. Merle Olsen, will join the National Federation of State High School Associations in its effort to promote the educational benefits of high school activity programs during the October 18-25 celebration of National High School Activities Week.

The Olsens will serve as honorary co-chairpersons of Activities Week, which was started in 1980. In 1983, the United States Senate and House of Representatives passed a joint resolution to establish the third week in October as Activities Week, and President Reagan later signed the resolution into public law.

Since the beginning of Activities Week eight years ago, more and more documentation supports what educators have known for a long time: Activity programs are not merely a diversion but rather an extension of a good educational program.

Many case studies indicate that students who participate in activity programs, which include athletics as well as non-athletic activities such as speech, music, debate and drama, tend to have higher grade-point averages, better attendance records, lower dropout rates and fewer discipline problems than students generally.

In addition to supporting the academic mission of schools, activities are inherently educational and foster success in later life.

A recent survey of top-level executives at Fortune 500 companies indicates that activity programs paved the way for successful professional careers. The survey, published in USA Today, revealed that 95 percent of the executives participated in high school sports, 54 percent in student government, 43 percent in the National Honor Society, 37 percent in music, 35 percent in scouting and 18 percent in journalism.

The high school experience shared by the Olsens epitomizes the ideals that Activities Week promotes--the student's participation in many different activity programs and steadfast encouragement by the parents.

During his days at Logan High School in Utah, Merlin participated in five sports--football, basketball, swimming, track and rifle. He also sang with the school's choral group, was on the debate team and served as a student body officer, and received honors for academics, citizenship and athletics.

Mrs. Olsen and her late husband, Lynn, raised five daughters and four sons, and they encouraged all their children to participate in activity programs. Not only did all four sons play high school football, three (Merlin, Phil and Orrin) played professionally.

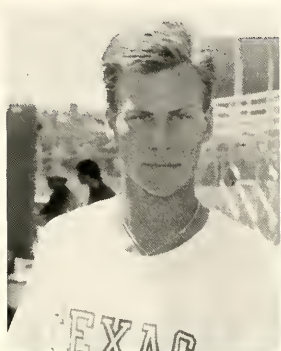
Five special days will be set aside during Activities Week to draw attention to individuals and programs.

National Officials Day on October 19 will recognize the approximately 500,000 individuals who officiate and judge high school athletic contests every year, and National Coaches Day on October 23 will salute another one-half million persons whose lives are devoted to coaching and teaching high school students.

Other special days are National Speech and Music Day on October 20, National Chemical Health Awareness Day on October 21 and National Fund Raising Day on October 24.

**NATIONAL
HIGH SCHOOL
ACTIVITIES WEEK****October 18-25,
1987**

1986-87 TENNIS CHAMPIONS



BOYS SINGLES CHAMPION
Andy Schrecker
Male



GIRLS SINGLES CHAMPION
Wendy Anderson
Henry Clay



BOYS DOUBLES CHAMPIONS
Marcello Rebolledo - Nirav Patel
Owensboro Catholic



GIRLS DOUBLES CHAMPIONS
Julie Abel - Julie Gering
Sacred Heart

GIRLS STATE CHAMPION Sacred Heart Academy



Front Row (L to R): Julie Gering, Julie Abell. Second Row: Sister Sara Delong, Anne Sutherland, Kristin Klebba, Jenny Lopez, Cackie Fenwick.



1987 SOCCER ALIGNMENT

**REGION 1**

Manager: Roy Woolum, A.D., University Heights Academy, 1300 Academy Dr., Box 1070, Hopkinsville, Ky. 42240 (502-886-0254)

Caldwell Co., Ft. Campbell, Madisonville-N. Hopkins, Murray, St. Mary, University Heights, Paducah Tilghman, Marshall Co., Calloway Co., Heath, Reidland, Lone Oak

REGION 2

Manager: Jack Hicks, A.D., Owensboro High School, 1800 Frederica St., Owensboro, Ky. 42301 (502-686-1084)

Apollo, Daviess Co., Henderson Co., Owensboro, Owensboro Catholic

REGION 3

Manager: Kenny Tabb, A.D., East Hardin High School, 129 College St., Glendale, Ky. 42740 (502-369-7370)

Ft. Knox, East Hardin, Elizabethtown, North Hardin, West Hardin, Bowling Green, Warren Central, St. Romuald

REGION 4

Manager: Jim Swart, A.D., Eastern High School, 12400 Old Shelbyville Rd., Louisville, Ky. 40243 (502-454-8243)

Ballard, Eastern, Jeffersontown, Kentucky Country Day, Oldham Co., Trinity, Waggener

REGION 5

Manager: Jay Phillips, A.D., Atherton High School, 3000 Dundee Rd., Louisville, Ky. 40205 (502-454-9732)

Atherton, Christian Academy, Seneca, Shelby Co., St. Francis, St. Xavier, Walden, Louisville Collegiate

REGION 6

Manager: Jay Levine, A.D., Male High School, 911 S. Brook St., Louisville, Ky. 40203 (502-454-8292)

Central, duPont Manual, Fern Creek, Male, Moore, Southern, Fairdale

REGION 7

Manager: Mike McDaniel, A.D., Iroquois High School, 4615 Taylor Blvd., Louisville, Ky. 40215 (502-454-8639)

DeSales, Doss, Holy Cross, Iroquois, Pleasure Ridge Park, Southwest Christian, Ninth & O

REGION 8

Manager: J.T. Mulligan, A.D., Lloyd Memorial High School, 450 Barlett, Ave., Erlanger, Ky. 41018 (606-727-1555)

Boone Co., Conner, Brossart, Dixie Heights, Lloyd Memorial, Simon-Kenton, St. Henry, Newport Central Catholic

REGION 9

Manager: Jack Kaelin, A.D., Covington Catholic High School, 1600 Dixie Hwy., Covington, Ky. 41011 (606-431-5351)

Campbell Co., Covington Latin, Covington Catholic, Highlands, Holmes, Holy Cross, Pendleton Co., Scott, Harrison Co.

REGION 10

Manager: Harry Dinsmore, A.D., George Rogers Clark High School, 620 Boone Ave., Winchester, Ky. 40391 (606-744-6111)

Boyd Co., George Rogers Clark, Menifee Co., Montgomery Co., Oneida Baptist, Paul Blazer, Rowan Co.

REGION 11

Manager: Rick Phillips, A.D., Bates Creek High School, Centre Pkwy., Lexington, Ky. 40502 (606-272-1513)

Frankfort, Franklin Co., Lafayette, Madison Central, M.M.I., Sayre, Scott Co., Bates Creek, Western Hills, Woodford Co., Paris

REGION 12

Manager: Steve Parker, A.D., Bryan Station High School, 1866 Edgeworth Dr., Lexington, Ky. 40505 (606-299-9212)

Berea, Boyle Co., Bryan Station, Danville, Garrard Co., Henry Clay, Jessamine Co., Lexington Catholic, Somerset, St. Camillus

A Friend In Deeds Continued from Page Three

the eight teams in the finals. They also provided approximately 700 box lunches to the same group on game day. Some of the members appeared on a number of sports talk shows promoting attendance for this event.

A completely manned and stocked hospitality room was provided for all the superintendents, principals, coaches, athletic directors and news media for both days of the championships. The Hickman-Camp room in Freedom Hall adjacent to the football field was provided free of charge by the University of Louisville.

Financial and promotional support were also given to the State Swimming Championships and the State Wrestling Championships that were hosted in Louisville in 1985.

The organization built on its success in 1986 by again promoting the State Football Championships and the State Wrestling Championships held in Louisville.

In addition to that done in the previous year for the Football Championships, a \$1,000.00 scholarship donated by Coca-Cola was given to one player of each of the eight teams playing in the four championship games. An awards banquet was attended by 450 people to give proper honor to the recipients of the scholarships.

A civic or sports leader presented each student athlete his plaque and scholarship letter. An enlarged photograph taken at the banquet of each student receiving his award was framed, matted and later presented to each student.

The hospitality suite for the State Wrestling Championship was sponsored by the Friends. A professional photographer was hired to make photos of the two finalists prior to the referee raising the hand of the winner. These photographs were also enlarged, matted and framed and later presented to each of the finalists of the 12 weight classes, 24 total.

After finding out that Senior's Commencement Day for both Christian County and Hopkinsville would be over before the pictures could be delivered by regular shipment, two members of the Friends' organization left at 5:00 a.m. the next morning and drove to those two schools to hand deliver the pictures. They arrived at the gym at Hopkinsville just as the commencement was concluded. However Principal Wood quickly reconvened the assembly and made the presentation to Roger Holloway and John Poindexter, as the student body gave a standing ovation.

With the support of Mayor Jerry Abramson and many corporate citizens, the Friends of Kentucky High School Athletics was successful in bidding for the Sweet 16 to be held in Louisville in 1988. Although this is a tremendous responsibility for their organization, the Friends are committed to continue their support of the other championships played in Louisville. They have already received the financial commitment for the football players' scholarships for next years football championships and plan to have these events to be even more successful in the coming years.

LOWE'S

Sporting Goods

901 N. MAIN ST., LONDON, KY. (864-2207)
TRADEMART, COBBIN, KY. (523-1700)

TOLL
FREE

1-800-442-0132

Reach for the Stars. Reach for Converse.



Team Special:

For every 15 pairs of Cons ordered each player will receive a gym bag and the coach will receive a sweat suit.

The Cons

Basketball shoe from Converse brings the great look and feel of garment leather to the basketball court. A unique combination of court smarts and street appeal.



CONVERSE
Reach for the Stars.

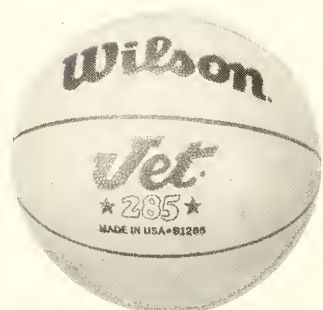
DISCOUNT SPORTING GOODS

Wilson Blemish Basketballs Sale

Wilson Blemish basketballs sale price 24.99 each, your choice.



- Prime grade full-grain leather panels
- Deep pebbling
- Wilson tanned-in natural tacky feel
- Narrow channel seams
- 100% Nylon wound last-bilt carcass



B1200 Wilson Jet Basketball

- Official men's basketball
- Blemish

B1285 Wilson Jet 285 Basketball

- Official women's basketball
- Blemish

Your Choice **\$24.99**
(while supply last)

PHONE:
502-651-5143

734 EAST MAIN ST.
GLASGOW, KY. 42141

Richard's
SPORT SHOP

KY WATS
1-800-862-0282

STATES BORDERING KY
1-800-626-0220

Kentucky High School Athletic Association
P.O. Box 22280
Lexington, KY 40522

Non-Profit Org
U.S. Postage
PAID
Richmond, KY
Permit No. 108