

8-1-1988

The Athlete, August 1988

Kentucky High School Athletic Association

Follow this and additional works at: <http://encompass.eku.edu/athlete>

Recommended Citation

Kentucky High School Athletic Association, "The Athlete, August 1988" (1988). *The Athlete*. Book 333.
<http://encompass.eku.edu/athlete/333>

This Article is brought to you for free and open access by the Kentucky High School Athletic Association at Encompass. It has been accepted for inclusion in The Athlete by an authorized administrator of Encompass. For more information, please contact Linda.Sizemore@eku.edu.

**THE
A
T
H
L
E
T
I
C
S**

August 1988
Volume XLX, No. 1



**Official Publication of
The Kentucky High School
Athletic Association**
Member of National Federation of State High School Associations



National Federation Adds Cheerleading To Its Structure

KANSAS CITY, MO (April 26, 1988) — In its continuing effort to meet the needs of high school activities participants, the National Federation has added cheerleading to its structure.

Because of the growth and development of cheerleading in the nation's high schools, the National Federation has adopted recommended guidelines and will provide services for this important high school activity.

Prior to 1978, the National Federation provided services only for high school athletics. That year, however, services for speech and music were added and, in 1984, programs for chemical health were started which led to the creation of TARGET.

"With the growth of cheerleading has come a need for unification and direction," said Brice Durbin, executive director of the National Federation. "We believe that the philosophy statement and recommended guidelines that have been developed will enhance cheerleading programs throughout the nation."

The National Federation Spirit Committee met March 28-29 at the National Federation to establish guidelines and construct a statement of philosophy. This committee also adopted the first Cheerleading Guide, which will contain the philosophy statement, recommended safety guidelines, photographs of partner stunts which are permitted and which are not permitted, suggestions for cheerleader advisors/coaches and guidelines for cheerleaders. The guide will be updated annually as are all National Federation rule-related publications.

Included in the statement of philosophy adopted by the Spirit Committee was the following: "... Cheerleaders shall serve as a support group for the interscholastic athletic program within the school, and, as such, play a very important role in the administration of athletics contests. Each squad should strive to boost school spirit, promote good sportsmanship, develop positive crowd involvement and help student participants and spectators achieve the most worthwhile educational objectives of the interscholastic program."

The philosophy statement also noted that cheerleading activities should center on leading or directing the cheers of fans and that performing is a secondary role of cheerleading.

Following are the recommended cheerleader safety guidelines that were adopted:

1. Adequate warm-up must precede all activities.
2. Jewelry is prohibited with the exception of religious or medical medals. If such medals are worn, they shall be taped to the body and be under the uniform.
3. Cheerleaders shall wear athletic-type shoes which are appropriate for cheerleading activities.
4. Tumbling and partner stunts should not be performed on wet surfaces. Tumbling, partner stunts and pyramids should not be performed on concrete.
5. Use of mini-tramps, spring boards or any apparatus that increases the height of a stunt is not allowed.
6. All pyramids and/or mounts are limited to two persons high, meaning the base(s) is in direct contact with the floor or ground.
7. Stunts higher than a shoulder stand (e.g., above-the-shoulder extensions) must have a spotter(s).
8. Free-falling flips or swan dives from mounts, pyramids or basket tosses are not allowed.
9. The catcher must have continual eye contact with the top person/flyer throughout the entire stunt. The top person must look before dismounting backwards to a cradle catch.
10. Toe and thigh pitches are not permitted.
11. Knee drops, split drops and tension drops are not allowed.
12. Double-base, split catches are not allowed.
13. Suspended splits are permitted provided the person performing the split is able to lower his/her own weight into the split position, and/or the bases provide support at thigh level.
14. Basket tosses or any type of toss must be performed from ground level and must be cradled by the original bases. If there are only two bases, there must be a spotter at the head/shoulder area when the top person/flyer is caught.

The Spirit Committee noted that cheerleading can be dangerous, and that responsibility for safety rests with each high school. The committee said that each school's coach/advisor should modify the above recommendations to reflect the age, training, experience and athletic ability of the students in his/her school.

NEW PUBLICATION!!	Cost: \$2.00 Plus Shipping & Handling
1988-89 OFFICIAL HIGH SCHOOL CHEERLEADING GUIDE	Shipping Charges
FOR BOYS AND GIRLS CHEERLEADING	Up to \$10.00 Add \$3.00
The book contains a philosophy statement, recommended safety guidelines, for cheerleaders and cheerleader advisors, and photographs to clarify stunts which are permitted or not permitted according to the National Federation guidelines.	Over \$10.00 add \$5.00
	Send orders to: NATIONAL FEDERATION OF STATE HIGH SCHOOL ASSOCIATIONS
	11724 Plaza Circle, P.O. Box 20626 Kansas City, MO 64195 816-464-5400

The Kentucky High School Athlete

Official Publication of the Kentucky High School Athletic Association

VOL. XLX, NO. 1

AUGUST, 1988

\$10.00 PER YEAR

Newly Elected Board Member



DAVID POINTS
Mt. Sterling

David Points, Principal at Montgomery County High School, has been elected by the Board Appointed Representatives of the Ninth and Tenth Basketball Regions to complete the unexpired term of Bill Case on the Board of Control. Case, formerly the Principal at Bourbon County High School, and most recently the Assistant to the Superintendent in Bourbon County, retired this past July 1 to enter private industry. Case will be a marketing and customer accounts representative for a bank in Bourbon County.

Points is certainly no stranger to administration or to the member schools in the Ninth and Tenth regions. He is now entering his tenth year as Principal at Montgomery County, which followed one year as an Assistant Principal at the school. Previous to his service for the Mt. Sterling school, Points was a guidance counselor and Assistant to the Principal at Mason County, and served several years in the teaching profession at Carroll and Oldham County High Schools.

Points graduated from Grant County High School in 1963 and began his undergraduate work at Hanover College in Hanover, Indiana the following fall. He transferred to the University of Kentucky where he received his B.A. in Education in 1968. He then did graduate work at Georgetown College, where in 1973 he received his M.A. degree in Guidance Counseling. In 1977, he received his Certification in Principalship/Administration from Morehead State and the following year received his Rank I in Administration from Morehead.

He has been involved in several Professional groups, including the American Association of School Administrators, the Kentucky High School Coaches Association, the Kentucky Association of School Administrators, and the National and Kentucky Association of School Principals. He has served on K.A.S.S.P.'s Board of Directors and as that group's president, was selected to Phi Delta Kappa, and has served on the Bluegrass Basketball Association's Board of Directors.

He wife Jean is the owner of Physical Therapy & Rehabilitation Services, while his son Spencer is a junior at Eastern Kentucky University and his son Darin, a sophomore at Hanover College.



1988 State Tennis Championships Team Scoring

BOYS	GIRLS
St. Xavier 17	Sacred Heart 14
Trinity (Louisville) . . . 15	Highlands 8
Henderson County . . . 7	Lone Oak 8
Lone Oak 6	Henderson County . . . 8
North Hardin 6	Henry Clay 7
Owensboro Catholic . . 6	Model 6
Dixie Heights 4	Sayre 5
Eastern 4	Bowling Green 5
Franklin County 4	Middlesboro 4
Scott County 4	Elizabethtown 3
Bowling Green 3	Eastern 3
Male 3	Bourbon County 2
Sayre 3	Atherton 2
Shelby County 3	Bullitt Central 2
Boyd County 2	Daviess County 2
Christian County 2	Doss 2
Covington Catholic . . . 2	Mason County 2
Fort Knox 2	Notre Dame 2
Hart County 2	Pulaski County 1
Montgomery County . . . 2	Calloway County 1
Paducah Tilghman . . . 1	Paul Blazer 1
Southern 0	Male 0
Danville 0	Meade County 0
Western 0	Beechwood 0
Fairdale 0	Collegiate 0
Cumberland 0	Grayson County 0
	Russell 0
	Southern 0

BOYS TEAM PLAY-OFF SCORES

#1 Singles:	
Bryan Minton/St. Xavier	def. Steve Mather/Trinity (6-4)(4-6) Retired
#2 Singles:	
Steve Reuff/Trinity	def. David Mahan/St. Xavier (6-4) (6-3)
#1 Doubles	
Chris Bohnert/St. Xavier Cinton Glasscock	def. Chad McRae/Trinity Travis Raque (6-3) (6-1)
#2 Doubles	
Ray Shea/St. Xavier Brice Brown	def. Brandon Bowlds/Trinity Brad Warren (By Default)

AUGUST, 1988

VOL. XLX, NO. 1

Published monthly, except June and July, by the Kentucky High School Athletic Association, Office of Publication, 560 E. Cooper Dr., P.O. Box 22280, Lexington, KY 40522.

Third class postage paid at Richmond, Kentucky. Acceptance for mailing at special rate of postage provided for in Section 1103, Act of October 3, 1917, authorized May 3, 1926. Publication No. 293080.

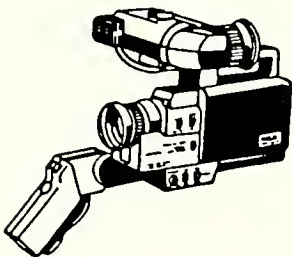
Please send notice of undelivered copies on form 3579 to: K.H.S.A.A., P.O. Box 22280, Lexington, Kentucky 40522.

Editor **TOM MILLS**
Assistant Editor **ANNE WESLEY MAYS**
Assistant Editor **BRIGID L. DeVRIES**
Assistant Editor **LOUIS STOUT**
Assistant Editor **BILLY V. WISE**
Assistant Editor **JULIAN TACKETT**
 Lexington, Kentucky

BOARD OF CONTROL

President - Tom Buchanan (1985-1989) Eddyville; Vice-President - Sam Chandler (1986-1990) Shelbyville; Directors - Sandy Allen (1988-1992) Louisville, Huston DeHaven (1987-1991) Hardinsburg, Charles Henry (1988-1992) Paducah, Pearl Ray Lefevers (1988-1992) Kettle Island, Charles Miller (1986-1990) Louisville, Marvin Moore (1988-1992) Morehead, Tony Olinger (1984-1989) Lexington, David Points (1988-1991) Mt. Sterling, Ken Tippett (1985-1989) Versailles, Liz Trabant (1988-1991) Ashland; State Department of Education - Harry Loy, Frankfort.

Subscription Rate \$10.00 per year



**K.H.S.A.A.
Videotaping
Regulations**

I. MEDIA

At all levels of competition, including district, regional, sectional, and state competition in K.H.S.A.A. sponsored tournaments and meets, managers are encouraged to make allowances for members of the television media to tape the contests at no charge to the media outlet, as long as the taping is for the sole purpose of newscast highlights.

Cable companies and other outlets desiring to tape the contest for delayed re-broadcast must receive the permission of the event manager, and the manager has the right to set and collect any fee which he or she may deem appropriate as an offset to any perceived lost ticket revenue. At the state level, all negotiations for rights to a delayed broadcast, as well as any live telecast, shall be initiated with the Association Sports Information Director, and must be approved by the Commissioner of the K.H.S.A.A. All telecasts and cablecasts at levels of K.H.S.A.A. competition other than the state final competition, shall be governed by the local manager.

II. PARTICIPATING TEAMS

At the discretion of the event manager, and if space is available, participating teams in K.H.S.A.A. events shall be allowed space, for the purpose of recording the game. If space is deemed to be available, the tournament manager has the right to designate a specific area for the purpose of taping, and allow taping only in that area. If space is deemed

to be not available, and the management is taping the events for the purpose of re-sale or archives, the management shall provide each participating team with a copy of the tape of each game in which they participate, at no charge. It shall be solely the determination of the event manager as to space availability. The manager of all state final championships is the Association Commissioner. Each participating school choosing to tape or film their event are required to sign a waiver indicating that the Association will be held blameless for any and all liability to those parties involved in the taping, and that the school will make NO copies of the tape or film.

III. FANS and the GENERAL PUBLIC

The Association shall allow for the taping of K.H.S.A.A. sponsored competition by persons whose equipment is totally self-contained, and can be operated from the confines of the seat which the person occupies. However, at the discretion of the event manager, taping may be prohibited if attendance figures or ticket sales indicate that the allowance of taping would impose on the comfort and view of other paying patrons. No support equipment, i.e., electric power supplies, tripods, etc. shall be allowed. The determination as to space availability and other technical requests shall be solely to the discretion of the event manager. If space is deemed to be available, the tournament manager has the right to designate a specific area for the purpose of taping, and allow taping only in that area. All requests for videotape and film space at levels below the state championships shall be directed to the event manager, and his or her decision as to space availability shall be final.

IV. ASSOCIATION TAPING PRIVILEGES

The Kentucky High School Athletic Association reserves the right to tape any of its state championship rounds, and to make the tapes available in a reasonable amount of time and at a reasonable rate. The association list of events to tape is including to but not limited to, Soccer Semi-Final and Final Round, Volleyball Semi-Final and Final Round, Football Championship Games (all four classes), State Boys Basketball Tournament (all games), State Girls Basketball Tournament (all games), State Wrestling Championships (final rounds in each class), and the Mid America Classic.

SPECIAL NOTICES

PART II EXAMS FOR FOOTBALL, SOCCER AND VOLLEYBALL — SEPTEMBER 12

The Part II examination must be taken under supervision. It will be given by the local assigning secretary and/or at the K.H.S.A.A. Office in Lexington, or other sites as designated by the K.H.S.A.A. Any exception to the above must be cleared with the Commissioner.

SCHOLARSHIP GUIDE ANNOUNCEMENT

The 1988 SCHOLARSHIP GUIDE for women, sponsored by the Women's Sports Foundation and Procter & Gamble, is available and ideal for high school girl athletes. The Guide lists the colleges and universities that offer athletic scholarships by state, and each entry includes the contact person, kinds of scholarships available and the number offered. In addition, guidance is given on how to approach the scholarship search and what questions the athlete should consider.

For a copy of the 1988 SCHOLARSHIP GUIDE, please write to: Women's Sports Foundation, 342 Madison Ave., Suite 728, New York, NY 10173. Please include \$2 for postage and handling.

K.H.S.A.A. SOCCER ALIGNMENT FOR 1988**REGION 1****District 1**

Heath
Lone Oak
Paducah Tilghman
Reidland
St. Mary

District 2

Caldwell County
Calloway County
Marshall County
Murray

District 3

Fort Campbell
Henderson County
Madisonville/N. Hopkins
University Heights

REGION 2**District 4**

Apollo
Davies County
Owensboro
Owensboro Catholic

District 5

Bowling Green
Glasgow
Russellville
Warren Central
Warren East

District 6

East Hardin
Elizabethtown
Fort Knox
North Hardin
West Hardin

REGION 3**District 7**

Doss
Fairdale
Holy Cross (Louisville)
Pleasure Ridge Park
Southwest Christian

District 8

Central
duPont Manual
Male
Ninth & O
St. Xavier

District 9

DeSales
Iroquois
Moore
Southern
St. Francis

REGION 4**District 10**

Fern Creek
Highview Baptist
Jeffersontown
Seneca
Waggener

District 11

Ballard
Eastern
Kentucky Country Day
Walden

District 12

Atherton
Christian Academy
Louisville Collegiate
Trinity (Louisville)

REGION 5**District 13**

Anderson County
Bullitt East
Frankfort
Franklin County
Oldham County
Shelby County
Western Hills

District 14

Harrison County
Mason County
Maysville
Pendleton County

District 15

Bourbon County
Millersburg Military
Paris
Scott County
Woodford County

REGION 6**District 16**

Berea
Boyle County
Danville
Somerset

District 17

Jessamine County
Lafayette
Sayre
Tates Creek

District 18

Bryan Station
Henry Clay
Lexington Catholic
Madison Central
Madison Southern

REGION 7**District 19**

Boone County
Conner
Dixie Heights
Lloyd Memorial
St. Henry

District 20

Covington Catholic
Covington Latin
Holmes
Holy Cross
Scott

District 21

Bishop Brossart
Campbell County
Highlands
Ludlow
Newport Central Cath.
Simon Kenton

REGION 8**District 22**

George Rogers Clark
Menifee County
Montgomery County
Powell County

District 23

Laurel County
Oneida Bapt. Institute
St. Camillus

District 24

Boyd County
Mullins
Paul Blazer
Rowan County
Russell

NEWS RELEASE

KENTUCKY ASSOCIATION OF PEP ORGANIZATION SPONSORS



The Kentucky Association of Pep Organization Sponsors (KAPOS) is pleased to recognize nine 1988 Stella S. Gilb Scholarship winners: Michelle Burgess, Barren County High School; Amy Fulcher, Hughes-Kirk High School; Julie Sharpsteen, Doss High School; Tammy Miller, Laurel County High School; Rhonda Smith, Lincoln County High School; Kimberly McDowell, East Carter High School; Janie Rowland, Johnson Central High School; Melissa Wireman, Magoffin County High School; and Jennifer Swartz, Pikeville High School. Each recipient was chosen for academic and leadership ability and will receive \$500. Since 1964, KAPOS has awarded 52 scholarships in the amount of \$36,600. Applications for the 1989 scholarships will be available in January. Any senior cheerleader at a KAPOS member school is eligible.



Michelle Burgess
Barren County High School



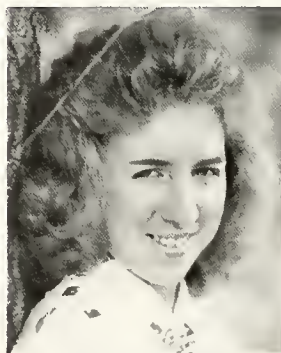
Amy Fulcher
Hughes-Kirk High School



Kimberly McDowell
East Carter High School



Tammy Miller
Laurel County High School



Janie Rowland
Johnson Central High School



Julie Sharpsteen
Doss High School



Rhonda Smith
Lincoln County High School



Jennifer Swartz
Pikeville High School



Melissa Wireman
Magoffin County High School



1988 KHSAA CROSS COUNTRY COMMITTEE MEETING MINUTES

July 14, 1988

Members Present:

- Mr. Louis Stout - Assist. Commissioner KHSAA
- Mr. Gordon Bocock - Pulaski Co. H.S., Chairman
- Mr. Larry Wingfeld - Shelby Co. H.S., Secretary
- Mr. Tony Rowe - Daviess Co. H.S.
- Mr. Will Pagan - Daviess Co. H.S.
- Mr. Frank Miklavcic - Frankfort H.S.
- Mr. Randy Crist - Anderson Co. H.S.
- Ms. Jean Wright - Franklin Co. H.S.
- Mr. Bob Stacy - Boyd Co. H.S.
- Mr. Jack Kaline - Covington Catholic H.S.

Meeting began at approximately 10:05 a.m. EDT

ITEM #1

Changing distance of girls distance in cross country from 3000 meter to 4000 meters.

RATIONALE: Girls run 3200 meters in track already, plus they have to run 4000 to 5000 meters in post season competition. Also all of the surrounding states have gone to either 4000 or 5000 meters.

PROPOSAL: Motion made by Gordon Bocock to recommend to KHSAA Board of Control to chance the distance in girls cross country from 3000 meters to 4000 meters beginning in the 1989 season.

Motion second by Larry Wingfeld;

Motion carried 9-0 in favor of the proposal.

ITEM #2

Randy Crist recommended that the individual winning trophy in the shape of the regional and state meets be presented to the individual winners rather than to the individuals' school.

RATIONALE: School did not necessarily need an individual winning trophy of each individual. Plus the individual who worked so hard should be given more consideration.

Recommendation was made in the form of a motion by Randy Crist;

Motion second by Frank Miklavcic

Motion carried 9-0 in favor of the proposal.

Amendment to previous motion;

Randy Crist moved that both the first and second place individual winners receive a trophy in place of the medals.

RATIONALE: Two trophies are already given, one goes to the school and one to the individual; but the previous motion changed the format of the trophy presentation. Instead of giving medals to the winner and runners-up in regional and state competition present them with trophies in the form of that state just as the state championship team trophies. The first and second place individuals will therefore not receive medals, saving the state the expense of those medals.

Motion seconded by Tony Rowe.

Motion carried 9-0 in favor of the amendment.

ITEM #3

Mr. Louis Stout discussed the State Cross Country Program and what an excellent program it was, with the exception of a few photographs of the individual All-State individuals missing; there were 5 photos missing.

ITEM #4

Jack Kaline of Covington Catholic and also a representing member of the Northern Ky. Coaches Association made a motion that the cross country season start on the last Saturday of August, rather than the first day of September.

RATIONALE: Football and Soccer start before September 1. This would also give the schools and teams having invitationals that are presently having to adjust their schedules for these meets, (and in some cases some schools are not able to have their meets because of the lost Saturday) and they could continue each year.

Motion second by Jean Wright

Motion carried 9-0 in favor of the motion.

MOTION TO BE PRESENTED TO THE KHSAA BOARD OF CONTROL.

ITEM #5

Mr. Stout commended State Cross Country Meet Manager Mr. David Whatel for his outstanding job for the 1987 meet.

Recommendations to improve the State Cross Country Championships:

1. Wider finish shoot
2. Back-up computer
3. Recall starter to be placed 50 to 100 yards in front of runners
4. Starter to be positioned behind the runners rather than in front
5. **UNIFORM CHECK:** (Both in Regional as well as State meets) All uniforms must be school issued in both type and color. Shirts are to be the same color and style, shorts same color. Tights must be worn under shorts; also it is recommended that cycling shorts not be worn unless worn under regular school issued shorts; they should be considered as tights.
6. In case of bad weather, the staging area be moved to the large black barn on the back of the Steeple Chase Track.

Starting times for the 1988 State Meet:

Girls	A	11:00 a.m. EST
	AAA	11:30 a.m. EST
	AA	12:00 p.m. EST
Boys	A	12:30 p.m. EST
	AAA	1:00 p.m. EST
	AA	1:30 p.m. EST

ITEM #6

Gordon Bocock presented a proposal for reclassification;

The present system is not equitable;

293 member schools KSHAA

204 member schools have cross country programs

89 member schools do not have cross country programs

Number of C.C. schools in each class at present time (July 1988)

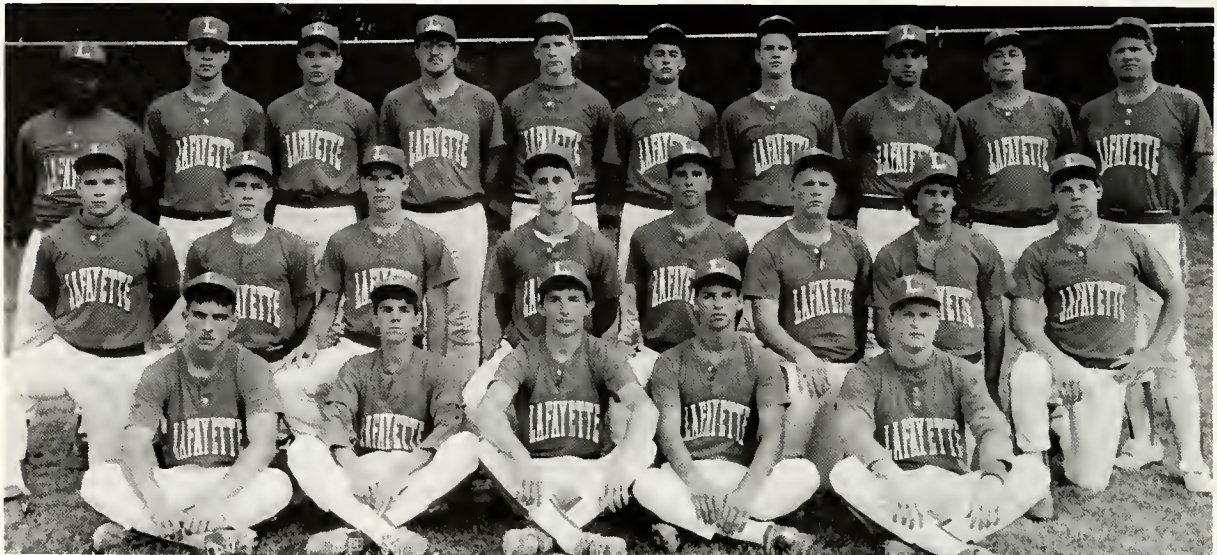
1000 students and up Class AAA

50 schools

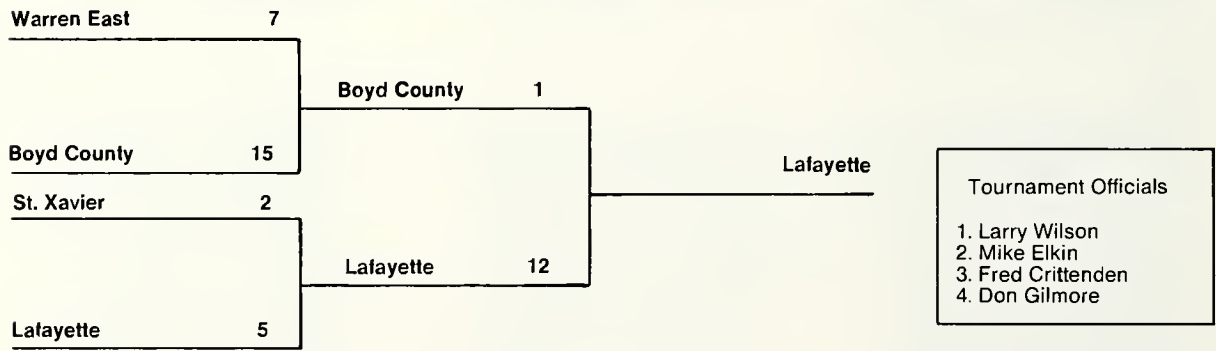
*15 schools in Louisville area with AA enrollment that is class AAA

*Cross Country Committee Minutes
Cont. on Pg. 6.*

1987-88 K.H.S.A.A. BASEBALL TOURNAMENT
Elizabethtown, Kentucky
June 2 - 3, 1988
LAFAYETTE HIGH SCHOOL



TEAM MEMBERS: James Anderson, Todd Baxter, Chris Corman, Scott Corman, Greg Dixon, Jed Dorough, Todd Easton, Chris Feltham, Keith Gadd, Kevin Goins, Aaron Howard, Greg Marshall, Nathan Massie, Billy McCord, Darrin McDonald, Matt Mitchell, Jeff Neal, Mickey Padgett, Brady Salee, Mike Speck, Shawn Wigglesworth.



Cross Country Committee Minutes Cont. from Pg. 5.

- | | |
|--|--|
| *1 school in Louisville area with A enrollment that is class AAA | 68 total in class AAA with actual class AAA enrollment |
| 34 Actual enrollment in class AAA with 1000 and above | 400-799 Class AA |
| 500-999 students Class AA | 64 teams |
| 68 schools | *6 Louisville area schools with AA classification |
| *15 schools in Louisville area AA enrollment | 70 total in class AA with actual class AA enrollment |
| 83 total schools in AA enrollment | 0-399 Class A |
| 0-499 students Class A | 62 teams |
| 84 schools class A | |
| *1 school in Louisville area A enrollment | |
| 85 total schools in A enrollment | |
- For actual number balance/ 204 divided by the 3 classes equal 68 schools per class.
- NEW PROPOSAL:**
- 800 and above Class AAA
- | | |
|---|--|
| 74 teams | |
| *—6 includes Louisville area schools with AA classification | |
- RATIONALE FOR THE RECLASSIFICATION:** Equality in number of schools in each class. Needed because of the closing of several Louisville area schools in recent years. First reclassification in 6 years.
- Motion by Tony Rowe to accept the proposal as presented.
 Motion second by Bob Stacy
 Motion carried 8-0 with one abstention Mr. Jack Kaline
- Being no further business the meeting was adjourned by Chairman Gordon Bocock at approximately 1:15 p.m. EDT.

NOTE TO ALL REGISTERED OFFICIALS

The Varsity game fee section of the re-registration information for officials contained a couple of typographical errors. First, the pay rate for soccer officials is to be \$66.00 per game (three man crew), and \$56 per game (two man crew). The mileage cut-offs for soccer, baseball and softball are 50 miles, not 75 as was listed. We regret any inconvenience this error may have caused.

Officials may continue to re-register in K.H.S.A.A. sponsored sports until the deadline for new registration in the sport. The new fee structure allows the official to re-register for any and all sports for \$27 for the first sport, \$15 for each additional sport after the June 30 deadline. If you need a registration card, please contact Patti Pruitt at the Association office.

THANKS TO THE N.F.I.O.A.

The Kentucky High School Athletic Association would like to thank the National Federation Interscholastic Officials Association for their help by mailing the rules books to Kentucky football and basketball officials. The football books were mailed in early August, while the basketball books are to be mailed in early September. This is a tremendous service and is done as a courtesy by the National Federation which allows this office to save the cost of shipping the books as well as many other administrative costs.

THANKS TO MEDIA REPRESENTATIVES

The Kentucky High School Athletic Association would like to thank several members of the media for their help throughout the year. Mike Fields at the Lexington Herald Leader has helped on numerous occasions with photographs and information as has Bob White with the Courier Journal. Larry Vaught, President of the A.P. Sports Editors and Mike Embry, the Lexington correspondent for A.P. have helped on numerous occasions as has Dave Baker, Weekend Sports Anchor for WKYT Channel 27 in Lexington, Terry Boehmker of the Kentucky Post, Ward Willingham of the Paducah Sun and Gene Abell of the Owensboro Messenger Enquirer. We encourage you to cooperate with your local media representatives as their work and reporting on behalf of your school can enhance both the performance and attitude of your school's programs. Thanks to all of these and the many other representatives of the media for their constant help.

ATHLETIC TRAINER'S SOCIETY LOOKING TO HELP SCHOOLS

The Kentucky Athletic Trainer's Society is pleased to announce the formation of the Student Athletic Trainer Membership Classification. Student members will be invited to attend meetings and meet other student and professional trainers around the state. Membership will also make them eligible to win a college scholarship. Membership dues, only \$3.00 per year, may be sent to Mr. Keith Webster, Vice-President, KATS, Head Athletic Trainer, Morehead State University, UPO Box 742, Morehead, 40351.

RULE BOOKS HAVE BEEN MAILED

All fall sport rules manuals have been mailed to the member schools, as have Transfer Forms, Game Contracts, Eligibility Sheets, Memorandum Calendars, and the ticket order forms for the Boys' and Girls' Basketball Tournaments. Contact the office if you are missing any of these supplies. The Handbook is currently at press and should be available for distribution by September 12.

OPEN DATES FOR BASKETBALL SCHOOLS

- Assumption needs teams for Holiday Jamboree, December 29 and 30. Carolyn Medley (502)458-9551.
- Bardstown High School needs Boys' Basketball games for 1988-89 on November 29, December 16, January 17, and February 21. Contact Garnis Martin (502)348-5913.
- Bullitt East needs a girls and boys varsity team for its Tip-Off Tournament to be held December 1, 2 and 3. Interested teams should contact Keith Collins (502)538-7322.
- North Bullitt needs girls games on 12/6/88, 1/3/89, 1/31/89, and 2/23/89. Interested schools should contact Phil Berry, (502)957-2187.
- Pikeville needs boys games December 23 through January 2, home or away, would consider tournament. Also need game on February 21. Contact Ken Trivette, A.D.
- Frederick Fraize needs boys' basketball games for November 15 and 29, December 2 and 6, preferably at home. Also open at January 6, 27 and 31, and February 7, 17, 20 and 24. Contact Bob Geoghegan, (502)788-3388.

A.C.T. TEST DATES FOR 1988-89

With the enforcement of the NCAA Minimum Eligibility Guidelines, it is important to keep up with the test dates for the American College Testing Assessment (ACT test). For the 1988-89 school year, the schedule is as follows:

<u>Test Date</u>	<u>Regular Postmark Deadline</u>	<u>Late Deadline</u>
10/22/88	09/23/88	10/11/88
12/10/88	11/11/88	11/29/88
02/11/89	01/13/89	01/31/89
04/15/89	03/17/89	04/04/89
06/10/89	05/12/89	05/30/89

SANCTIONS FOR CONTESTS INVOLVING OUT OF STATE TEAMS

Many questions arise when a member school attempts to schedule a game against a team from another state. Remember that the contest must go through the proper administrative channels to be considered a legal contest. The following can serve as a simple guide to athletic directors and principals --

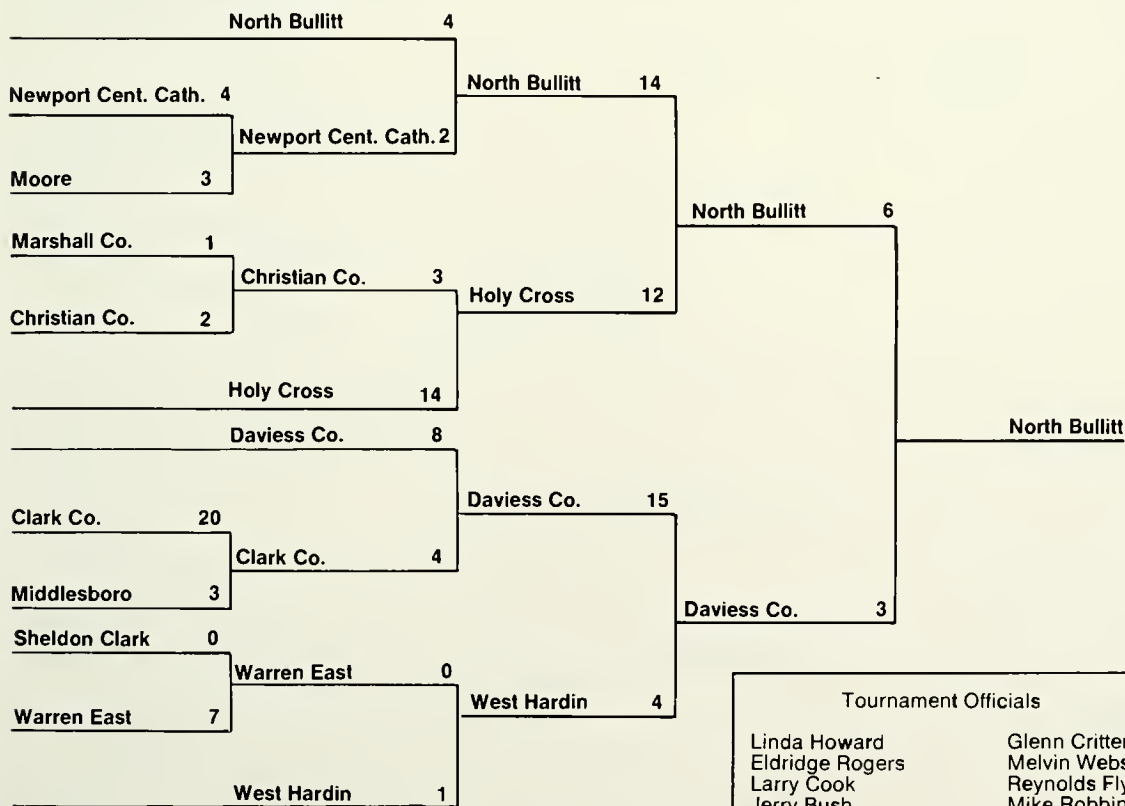
- 1) If a game involves only one Kentucky school and one out of state school, and the other state adjoins Kentucky, no state Association or National Federation sanction is necessary;
 - 2) If a meet or tournament involves one or more teams from outside the host state, and the invited teams are from adjoining state(s), National Federation sanction is not necessary. However the event must be sanctioned by the state Associations involved. It is the responsibility of the principal of the host school to initiate the sanction procedure;
 - 3) In all other cases, both state Association and National Federation sanction is required. If you are the host school, contact the Kentucky High School Athletic Association to obtain the sanction forms and begin the sanction process. The sanction process must be completed thirty (30) days prior to the event.
 - 4) It is also important to remember that this sanction process is also necessary for foreign competition as well as additional sanctioning may be necessary.
-

1987-88 K.H.S.A.A. SOFTBALL TOURNAMENT
Louisville, Kentucky
May 26-27, 1988

NORTH BULLITT HIGH SCHOOL



TEAM MEMBERS: Julie Neighbor, Dawn Hardin, Kristi Bauer, Shellie Stevens, Shellie Dial, Terri Hall, Jennfer Driskell, Missy Miller, Dana Witcher, Dawn Annibial, Gwendy Fulkener, Tonya Cundiff, Sandi Richmond, Alicia Shartzter, Tammy Gomez, Kim Drae.

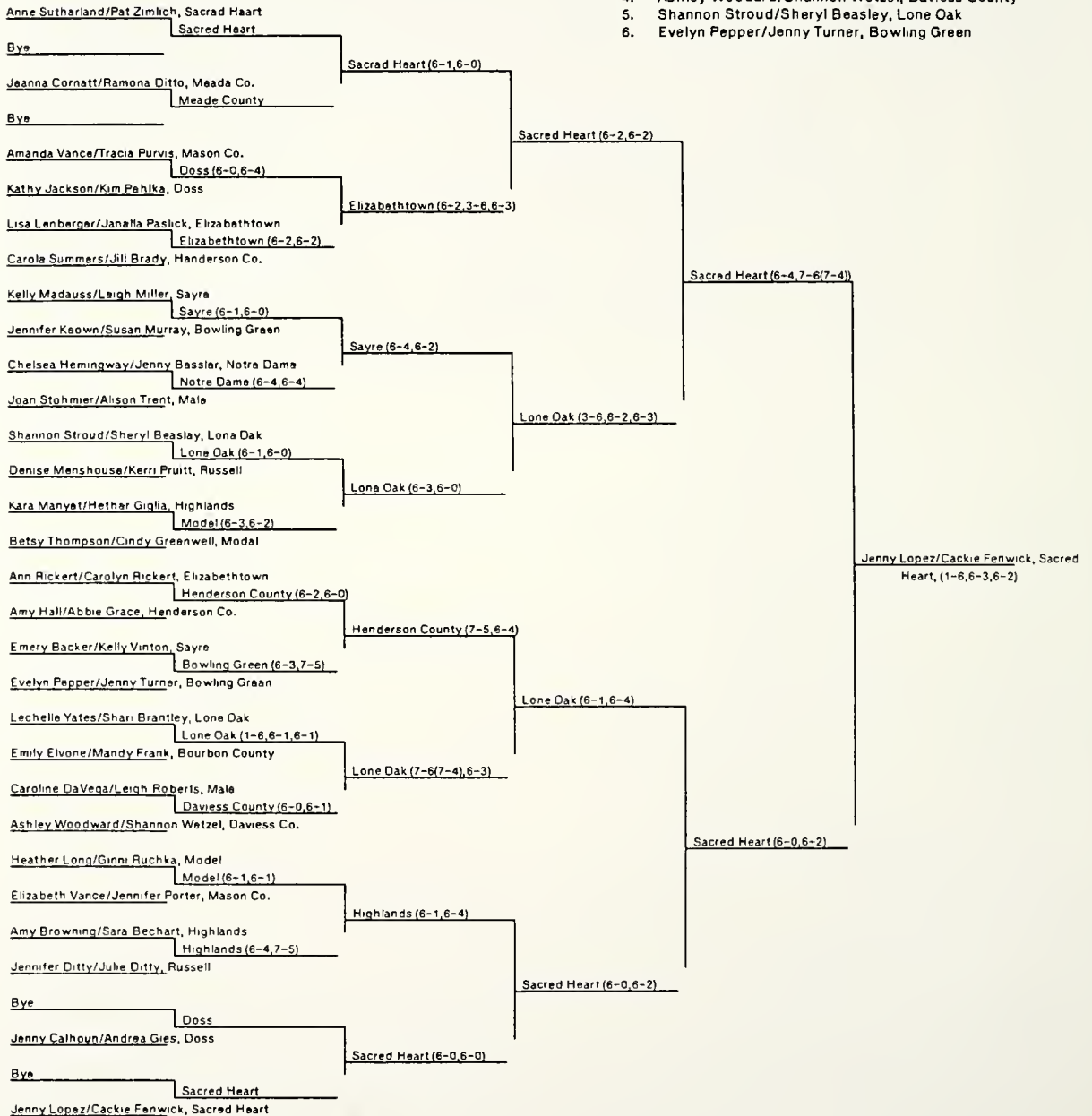


- | Tournament Officials | |
|----------------------|------------------|
| Linda Howard | Glenn Crittenden |
| Eldridge Rogers | Melvin Webster |
| Larry Cook | Reynolds Flynn |
| Jerry Bush | Mike Robbins |
| Jim King | John Smart |
| Jim Ash | Fred Pervis |
| Danny Beavers | Roy Hughes |
| Leonard Zirnheld | Don Rinehart |

K.H.S.A.A. State Tennis Tournament (Girls Doubles)
Downing Tennis Center, University of Kentucky, Lexington
June 2-4, 1988

Seeded Players

1. Jenny Lopez/Cackie Fenwick, Sacred Heart
2. Anne Sutherland/Pat Zimlich, Sacred Heart
3. Kelly Madauss/Leigh Miller, Sayre
4. Ashley Woodard/Shannon Wetzel, Daviess County
5. Shannon Stroud/Sheryl Beasley, Lone Oak
6. Evelyn Pepper/Jenny Turner, Bowling Green



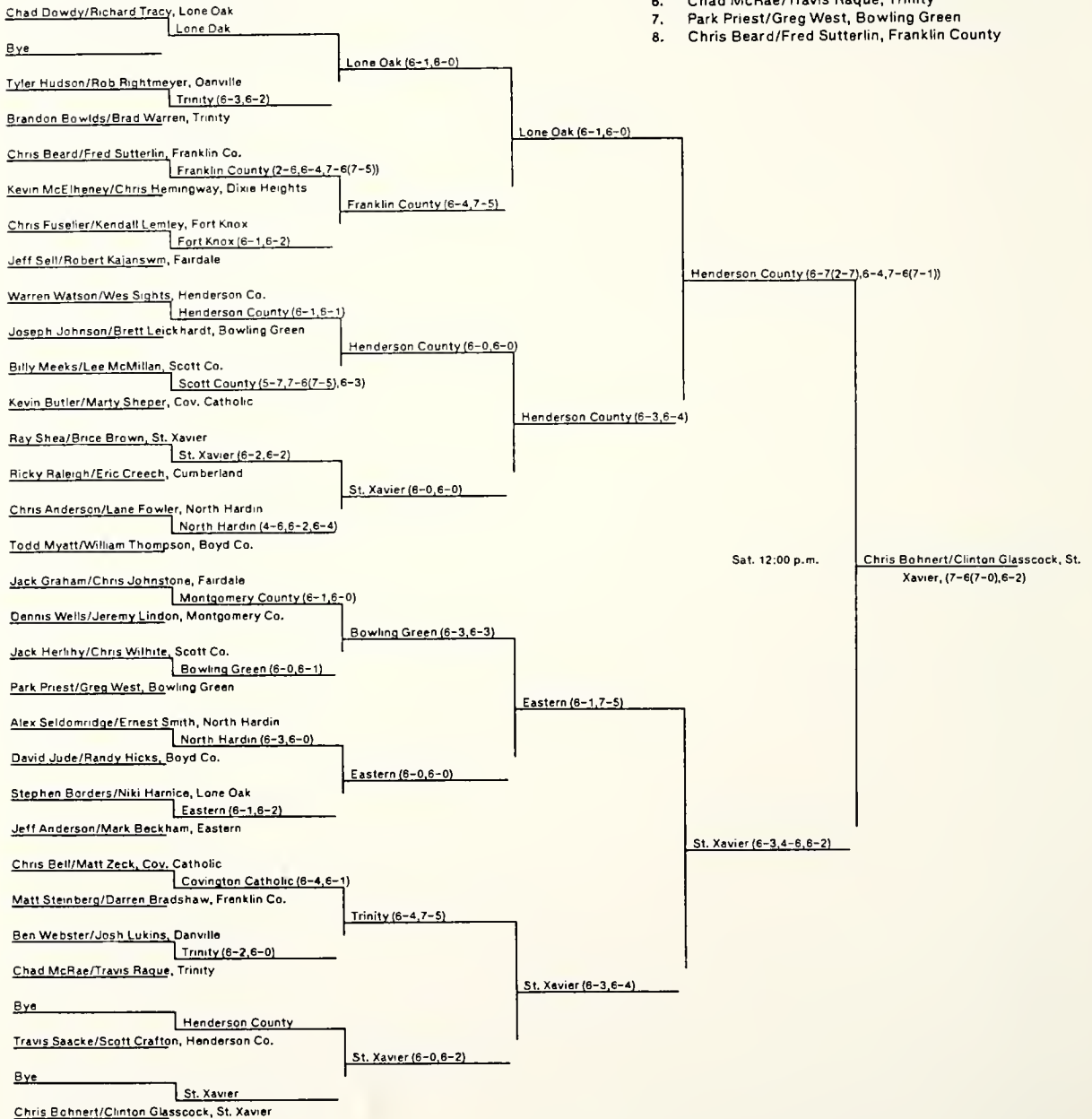
K.H.S.A.A. State Tennis Tournament (Boys Doubles)

Downing Tennis Center, University of Kentucky, Lexington

June 2-4, 1988

Seeded Players

1. Chris Bohnert/Clinton Glasscock, St. Xavier
2. Chad Dowdy/Richard Tracy, Lone Oak
3. Jeff Anderson/Mark Beckham, Eastern
4. Warren Watson/Wes Sights, Henderson County
5. Ray Shea/Brice Brown, St. Xavier
6. Chad McRae/Travis Raque, Trinity
7. Park Priest/Greg West, Bowling Green
8. Chris Beard/Fred Sutterlin, Franklin County



1987-88 TENNIS CHAMPIONS



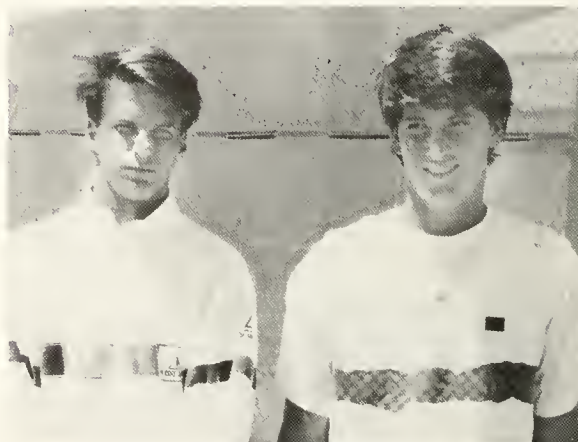
GIRLS SINGLES CHAMPION
Elizabeth Huber
Kentucky Country Day



BOYS SINGLES CHAMPION
Vimal Patel
Owensboro Catholic

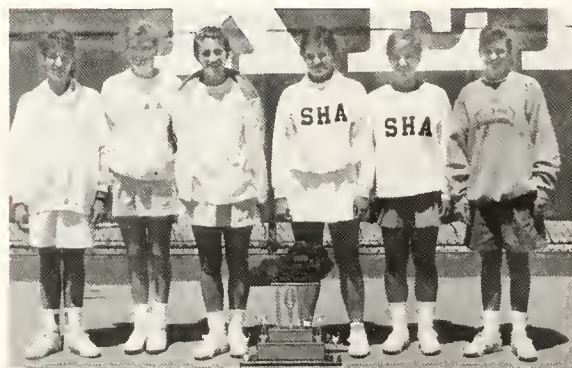


GIRLS DOUBLES CHAMPIONS
Cackie Fenwick - Jenny Lopez
Sacred Heart



BOYS DOUBLES CHAMPIONS
Chris Bohnert - Clint Glasscock
St. Xavier

GIRLS STATE CHAMPION
Sacred Heart Academy



(L to R): Laura Schwab, Cackie Fenwick, Jenny Lopez, Anne Sutherland, Patricia Zimlich, Leslie Mehlbauer.

BOYS STATE CHAMPION
St. Xavier



(FRONT L to R): Adam Bibb, Chris Bohnert, Bryan Minton.
(BACK L to R): Brice Brown, Peter Ashby Howard, Clint Glasscock, David Mahan, Raymond Shea.

LOWE'S

Sporting Goods

901 N. MAIN - LONDON, KY 40741

TOLL
FREE
1-800-442-0132

Field tested. Pro-chosen.

*Youth League
Football Equipment
In Stock For
At Once Delivery!*

Pick the only youth uniforms with this much pro experience built in! In addition to the wide choice of color, fabric and cost, you're getting the brand that's worn by 27 of 28 NFL teams, as well as the players in the Russell Athletic Pop Warner League National Championships!

Tough construction, easy-moving Competition Cut™, and super-durable fabrics make Russell Athletic youth football uniforms the one to run with.



THE EXPERIENCE SHOWS™



WORN BY AMERICA'S
TOP TEAMS

42

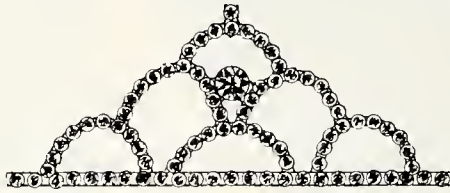
MACHINE WASH SEPARATELY
USE WARM WATER - GENTLE
CYCLE - DO NOT BLEACH
TUMBLE DRY - LOW HEAT
WPL 7232 MADE IN U S A

Russell Athletic Teamwear.

Homecoming '88



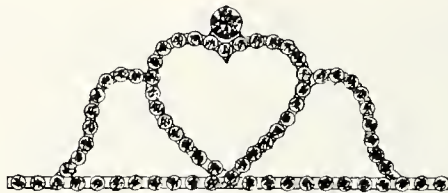
4202 \$5.58
Choice of colors--14 1/2" tall.



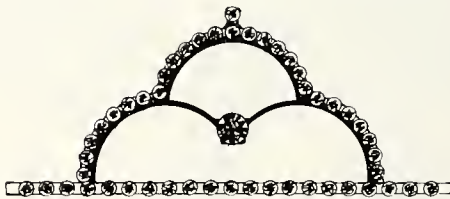
T-004 \$18.25



T-615 \$11.95



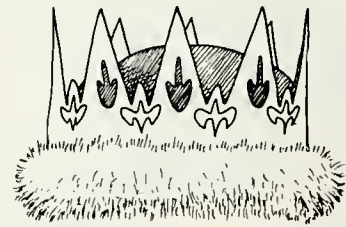
T-420 \$9.95



T-251 \$10.25



423 \$3.98
Choice of colors--10 1/2" tall.



T-468 \$3.95
Girl's crown in red and gold.

All tiaras have adjustable bands and attached barettes. Trophies are available in many other styles and with other figures. Engraving is

extra. We also have homecoming awards not shown, including other tiaras, crowns and scepters.

Richard's

231 W. Main
Glasgow, Ky. 42141-0498
1-800-274-4373

Kentucky High School Athletic Association
P.O. Box 22280
Lexington, KY 40522

Non-Profit Org.
U.S. Postage
PAID
Richmond, KY
Permit No. 108