

3-1-1989

The Athlete, March 1989

Kentucky High School Athletic Association

Follow this and additional works at: <http://encompass.eku.edu/athlete>

Recommended Citation

Kentucky High School Athletic Association, "The Athlete, March 1989" (1989). *The Athlete*. Book 347.
<http://encompass.eku.edu/athlete/347>

This Article is brought to you for free and open access by the Kentucky High School Athletic Association at Encompass. It has been accepted for inclusion in The Athlete by an authorized administrator of Encompass. For more information, please contact Linda.Sizemore@eku.edu.

THE A T H L E T I C S

March, 1989

Volume LI, No. 8

Official Publication of
The Kentucky High School
Athletic Association

Member of National Federation of State High School Associations

K
E
N
T
A
R
G
E
T
U
C
K
Y



Helping Students Cope With Alcohol and Drugs

TARGET is a cooperative alcohol and other drug program offered through the Kentucky High School Athletic Association in conjunction with the Kentucky Department of Education, Cabinet for Human Resources, and the Governor's Champions Against Drugs.

TARGET is designed to augment existing programs and resources and assist in creating a "Drug-Free School and Community" through athletic and extracurricular athletic groups, staff development, student leadership activities, and parent awareness seminars and activities.

Kentucky TARGET Services include:

- I. Seminars and workshops for administrators, community leaders, athletic and activity directors and sponsors, coaches, counselors, teachers, parents and students.
 - II. Audio Visual Library - Alcohol and other drug videos are available at K.H.S.A.A. for schools to use with their alcohol and other drug programs. Audio materials may be checked out for a two week period at no charge, except return postage. A listing of tapes will be in the *May Athlete* or may be mailed upon request.
 - III. Participation in Networking Systems.
 - IV. Leadership Training Hours.
 - V. Toll-Free number for information: K.H.S.A.A. Office — 1-800-248-3234.
-

The Kentucky High School Athlete
Official Publication of the
Kentucky High School Athletic Association

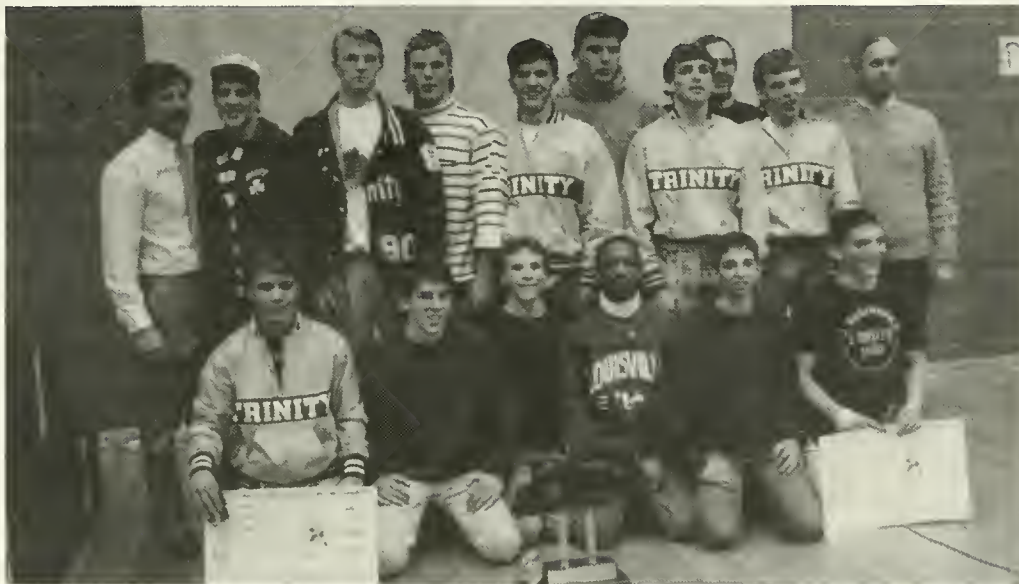
VOL. LI, NO. 8

MARCH, 1989

\$10.00 PER YEAR

STATE WRESTLING CHAMPIONS
February 17-18, 1989 — Louisville, Kentucky

Trinity High School



Hwy-Jason Dombroski, 189 lb.-Greg Shuck, 171 lb.-David Brennan, 160 lb.-Kevin O'Daniel, 152 lb.-Andy Maynor, 145 lb.-Jay Shaw, 140 lb.-Mark Selke, 135 lb.-Brian Selke, 130 lb.-Doug Fredrick, 125 lb.-Mat Komaniski, 119 lb.-Paul Garcia, 112 lb.-Alex Wray, 103 lb.-John Berghaus.

Individual Weight Class Winners



103 lb.-Chris Zinner (St. Xavier), 112 lb.-Shuan Atcher (North Hardin), 119 lb.-John Wyan (Conner), 125 lb.-Joel Corrothers (Waggener), 130 lb.-Chris Goodman (North Hardin), 135 lb.-Wille Ennells (Hopkinsville), 140 lb.-Arvil Banks (Christian County), 145 lb.-Earl Smith (Western), 152 lb.-Jerod Trice (Hopkinsville), 160 lb.-Jon Wiard (Frankfort), 171 lb.-Berkley Riley (Henry Clay), 189 lb.-Chris Birch (Henry Clay), Heavyweight-James Simpson (P.R.P.).

MARCH, 1989

VOL. LI, NO. 8

Published monthly, except June and July, by the Kentucky High School Athletic Association, Office of Publication, 560 E. Cooper Dr., P.O. Box 22280, Lexington, KY 40522.

Third class postage paid at Richmond, Kentucky. Acceptance for mailing at special rate of postage provided for in Section 1103. Act of October 3, 1917, authorized May 3, 1926. Publication No. 293080.

Please send notice of undelivered copies on form 3579 to: K.H.S.A.A., P.O. Box 22280, Lexington, Kentucky 40522.

Editor **TOM MILLS**
Assistant Editor **ANNE WESLEY MAYS**
Assistant Editor **BRIGID L. DeVRIES**
Assistant Editor **LOUIS STOUT**
Assistant Editor **BILLY V. WISE**
Assistant Editor **JULIAN TACKETT**
Lexington, Kentucky

BOARD OF CONTROL

President - Tom Buchanan (1985-1989) Eddyville; Vice-President - Sam Chandler (1986-1990) Shelbyville; Directors - Sandy Allen (1988-1992) Louisville, Huston DeHaven (1987-1991) Hardinsburg, Charles Henry (1988-1992) Paducah, Pearl Ray Lefevers (1988-1992) Kettle Island, Charles Miller (1986-1990) Louisville, Marvin Moore (1988-1992) Morehead, Tony Olinger (1984-1989) Lexington, David Points (1988-1991) Mt. Sterling, Ken Tippett (1985-1989) Versailles, Liz Trabandt (1988-1991) Ashland; State Department of Education - Harry Loy, Frankfort.

Subscription Rate \$10.00 per year



STATE BASEBALL COMMITTEE MEETING

February 10, 1989

ATTENDANCE

- Mr. Louis Stout, Chairman, Commission, K.H.S.A.A.
- Mac Whitaker, Assistant Chairman, Harrison County High School, Region 10
- Mike Elkins, Umpire, Bluegrass Baseball Association
- Jody Hamilton, Boyd County High School, Region 16
- Bob Mantooth, Owensboro Apollo High School, Region 3
- Mike Sander, Boone County High School, Region 9
- Dave Thomas, Pikeville High School, Region 15
- Bill Wayne, Henderson County High School, Region 2
- Joe White, Louisville St. Xavier, Region 7
- Gilbert Wilson, Pulaski County High School, Region 12

Commissioner Louis Stout called the meeting to order. Mr. Stout introduced Mac Whitaker, Harrison County High School, as Assistant Chairman. Members of the committee introduced themselves and their representation. (Please note attendance above.)

Commissioner Stout explained procedures for addressing and submitting suggestions and recommendations for changes and improvements in, and/or additions to, existing K.H.S.A.A. rules for high school baseball.

Commissioner Stout asked for discussion of any old business.

There was one item of old business. Commissioner Stout announced sites for the 1989 Sectional and final four high school baseball tournaments. Sectional sites are: Apollo High School, Elizabethtown High School, Somerset High School and Pikeville. The University of Kentucky is the site selected for the state final four tournament.

Commissioner Stout then asked for discussion of new business.

The first item of new business was to discuss sites for future state final four baseball games. Discussion centered around whether or not games should be played on high school as opposed to college fields.

Mac Whitaker (Harrison County) expressed concern for the number of players the K.H.S.A.A. pays meal and lodging expenses for during the state final four tournament.

Commissioner Stout commented that if the committee wishes to address this question, written inquiries should be submitted to the K.H.S.A.A.

Bill Wayne (Henderson County) asked if the size of dugouts was a factor in determining where tournament games are played.

Commissioner Stout responded by stating that many factors contribute to those decisions and yes, that was one factor.

Mac Whitaker (Harrison County) opened discussions concerning the possibility of naming sectional directors to have responsibility for setting up rotation schedules for hosting sectional tournaments. Following brief discussions, Joe White (Louisville St. Xavier) made a motion to appoint sectional directors to determine sites for sectional tournament. Jody Hamilton (Boyd County) seconded the motion. The motion passed unanimously.

Sectional directors were appointed and are:

- Bob Mantooth (Owensboro Apollo) Western Sectional
- Bill Wayne (Henderson County)
- Jody Hamilton (Boyd County) Eastern Sectional
- Dave Thomas (Pikeville)
- Mike Sander (Boone County) Central Sectional
- Mac Whitaker (Harrison County)
- Joe White (Louisville St. Xavier) Louisville Sectional

An additional coach will be named by Commissioner Stout and announced at a later date.

Commissioner Stout emphasized the need to talk with the prospective high school's athletic director to determine availability, interest, and confirmation to host the sectional baseball tournament prior to submitting the site to the K.H.S.A.A.

The next item of business was continuation of the high school baseball committee meetings. The committee members concurred that they believed the meetings were informative and valuable. Commissioner Stout recommended the committee plan to hold its main organizational meeting each year to take place during the Kentucky High School Baseball Coaches' Association (K.H.S.B.C.A.) annual clinic. Mac Whitaker (Harrison County), Clinic Coordinator, agreed and noted that adequate time will be given for the meeting and is included in the agenda for the 1989 annual clinic which will be held in November.

The next item for discussion concerned holding post season tournaments on fields that had lights. In the past, some schools were forced to dismiss early due to their having to play games on fields not having lights.

Gilbert Wilson (Pulaski County) made a motion that one criteria in selecting a site to host regional, sectional and state tournament be that the site maintain lighted facilities. Coach Wilson's motion added that teams involved in those tournaments vote on what times to play the games. In addition, the majority vote would govern the time set.

Bill Wayne (Henderson County) seconded the motion. The motion passed unanimously.

The next agenda item was discussion of umpire fee structure.

Commissioner Stout stated that the recommendation on umpire fee structure should be submitted in writing to the K.H.S.A.A. and come from the committee. The structure is to be based on a per game basis, excluding mileage.

STATE WRESTLING RESULTS — 1989
TEAM STANDINGS

1. Trinity	131.5	22. Union County	20
2. Hopkinsville	126.5	23. Danville	19
3. Christian County	106	24. Ky. Country Day	17
4. Waggener	103	Simon Kenton	17
5. Western	88.5	26. Johnson Central	16
6. St. Xavier	82	27. Oldham County	12
7. Lex. Henry Clay	73	Webster County	12
8. Campbell County	67	29. Scott	10
9. Conner	60	30. Sheldon Clark	6.5
10. Moore	58	31. Caldwell County	6
11. Woodford County	52	West Hardin	6
12. Harrison County	43.5	33. East Hardin	5
13. Fern Creek	41	34. Boone County	4
14. Pleasure Ridge Park	40.5	Doss	4
15. North Hardin	40	36. Paducah Tilghman	3
16. Fairdale	34.5	Wayne County	3
Frankfort	34.5	38. Eastern	2
18. Lafayette	34	Fort Knox	2
19. Dixie Heights	33.5	Jeffersontown	2
20. Lex. Bates Creek	30	41. Lex. Bryan Station	1
21. Fort Campbell	28		

MOST VALUABLE WRESTLER



152 lb. Jerod Trice
Hopkinsville

1989 GIRLS' K.H.S.A.A. Swimming and Diving Champions University of Kentucky

FRIDAY AND SATURDAY, MARCH 3 & 4, 1989

GIRLS' FINAL RESULTS

Team	200 Yard Medley Relay	200 Yard Freestyle	200 Yard Ind. Medley	50 Yard Freestyle	Meter Diving	100 Yard Butterfly	100 Yard Freestyle	500 Yard Freestyle	100 Yard Backstroke	100 Yard Breaststroke	400 Yard Freestyle Relay	TOTAL POINTS
	1.	2.	3.	4.	* 5.	6.	7.	8.	9.	10.	11.	Total
1. Notre Dame Academy	32.0	23.0	12.0	4.5	0.0	6.0	5.0	12.0	17.0	27.0	26.0	164.5
2. Elizabethtown	24.0	16.0	12.0	0.0	0.0	9.0	0.0	28.0	15.0	5.0	20.	129.0
3. Bowling Green	18.0	7.0	0.0	10.0	0.0	2.0	7.0	11.0	12.0	10.0	24.0	101.0
4. Beechwood	0.0	0.0	18.0	16.0	0.0	13.0	16.0	0.0	0.0	0.0	32.0	95.0
5. Henry Clay	22.0	1.0	23.0	0.0	5.0	16.0	0.0	0.0	0.0	13.0	8.0	88.0
6. Model	26.0	0.0	0.0	25.0	0.0	12.0	12.0	0.0	0.0	0.0	0.0	75.0
7. Eastern	20.0	10.0	0.0	3.5	0.0	0.0	13.0	0.0	9.0	2.0	14.0	71.5
8. Paul Blazer	0.0	5.0	9.0	9.0	0.0	0.0	9.0	9.0	3.0	0.0	22.0	66.0
9. Sacred Heart Academy	2.0	3.0	3.0	0.0	36.0	0.0	0.0	5.0	7.0	0.0	0.0	56.0
10. Scott	14.0	13.0	0.0	0.0	0.0	10.0	0.0	0.0	0.0	7.0	0.0	44.0
11. Hopkinsville	0.0	2.0	0.0	5.0	0.0	0.0	10.0	1.0	0.0	0.0	18.0	36.0
12. Male (tie)	8.0	0.0	0.0	0.0	10.0	7.0	0.0	0.0	7.0	0.0	0.0	32.0
12. Tates Creek (tie)	4.0	4.0	0.0	0.0	2.0	0.0	2.0	10.0	0.0	10.0	0.0	32.0
14. Villa Madonna Academy	0.0	0.0	4.0	0.0	0.0	0.0	0.0	7.0	0.0	12.0	6.0	29.0
15. Owensboro Catholic	0.0	0.0	11.0	0.0	0.0	0.0	0.0	0.0	13.0	1.0	0.0	25.0
16. Sayre	0.0	0.0	0.0	0.0	0.0	11.0	0.0	13.0	0.0	0.0	0.0	24.0
17. Daviess County	0.0	0.0	0.0	11.0	0.0	0.0	11.0	0.0	0.0	0.0	0.0	22.0
18. Taylor County	6.0	0.0	0.0	2.0	0.0	0.0	0.0	0.0	0.0	9.0	0.0	17.0
19. Simon Kenton	0.0	0.0	0.0	0.0	16.0	0.0	0.0	0.0	0.0	0.0	0.0	16.0
20. Ballard (tie)	0.0	0.0	0.0	7.0	0.0	0.0	3.0	3.0	0.0	0.0	0.0	13.0
20. Bryan Station (tie)	0.0	9.0	0.0	0.0	0.0	0.0	0.0	4.0	0.0	0.0	0.0	13.0
22. Holmes	0.0	0.0	0.0	0.0	12.0	0.0	0.0	0.0	0.0	0.0	0.0	12.0
23. Madisonville No. Hopkins	10.0	0.0	0.0	0.0	0.0	0.0	0.0	0.0	0.0	0.0	0.0	10.0
24. Kentucky County Day (tie)	0.0	0.0	0.0	0.0	0.0	7.0	0.0	0.0	0.0	0.0	0.0	7.0
24. Lafayette (tie)	0.0	0.0	0.0	0.0	7.0	0.0	0.0	0.0	0.0	0.0	0.0	7.0
26. Atherton (tie)	0.0	0.0	1.0	0.0	0.0	0.0	0.0	0.0	0.0	4.0	0.0	5.0
26. Lexington Catholic (tie)	0.0	0.0	0.0	0.0	0.0	0.0	5.0	0.0	0.0	0.0	0.0	5.0
28. Brown (tie)	0.0	0.0	0.0	0.0	4.0	0.0	0.0	0.0	0.0	0.0	0.0	4.0
28. Highlands (tie)	0.0	0.0	0.0	0.0	0.0	0.0	0.0	0.0	0.0	0.0	4.0	4.0
30. Ohio County	0.0	0.0	0.0	0.0	0.0	0.0	0.0	0.0	0.0	3.0	0.0	3.0
31. Henderson County	0.0	0.0	0.0	0.0	1.0	0.0	0.0	0.0	0.0	0.0	0.0	1.0

GIRLS' INDIVIDUAL RESULTS

#1 - 200 Yard Medley Relay

1. Notre Dame Academy (NDA)	1:56.72
2. Model (MOD)	1:57.15
3. Elizabethtown (ET)	1:57.51
4. Henry Clay (HC)	1:59.03
5. Eastern (EST)	2:01.11
6. Bowling Green (BG)	2:02.21

#5 1 Meter Diving

1. Tara Justice (SA)	384.60
2. Heather Pollard (SHA)	373.40
3. Allison Heger (HOL)	361.00
4. Karin Kochert (SHA)	356.20
5. Whitney Arnette (MLE)	349.80
6. Carrie Waldeyer (SHA)	339.75

#9 100 Yard Backstroke

1. Karen Bresser (NDA)	1:02.26
2. Tonya Lyddane (OCH)	1:02.92
3. Andi Dexter (BG)	1:04.86
4. Jennifer Ienke (ET)	1:04.86
5. Ashli Collins (TC)	1:04.96
6. Jan Howell (EST)	1:05.64

#2 - 200 Yard Freestyle

1. Stephanie Livers (ET)	1:54.66
2. Jennifer Andrews (SCT)	1:58.92
3. Karen Bresser (NDA)	1:59.14
4. Teresa Jump (NDA)	1:59.27
5. Melissa Blandford (EST)	2:00.38
6. Hilary Mink (BS)	2:02.58

#6 100 Yard Butterfly

1. Jena Ramsey (HC)	58.89
2. Talor Bendel (BEE)	59.13
3. Renan Wisenbaker (MOD)	1:00.03
4. Dyer Ashley (SAY)	1:00.05
5. Jennifer Andrews (SCT)	59.54
6. Holly Evans (ET)	1:00.10

#10 100 Yard Breaststroke

1. Traci Pomeroy (NDA)	1:07.87
2. Jennifer Brooks (HC)	1:10.40
3. Erin O'Gorman (VMA)	1:10.60
4. Aly Boehmer (NDA)	1:11.32
5. Mary Rascoe (BG)	1:12.15
6. Jenny Allen (TAY)	1:12.55

#3 Girls 200 Yard Individual Medley

1. Jennifer Brooks (HC)	2:12.49
2. Talor Bendel (BEE)	2:15.51
3. Holly Evans (ET)	2:15.82
4. Tonya Lyddane (OCH)	2:16.07
5. Traci Pomeroy (NDA)	2:16.71
6. Jan Alvey (PB)	2:17.37

#7 100 Yard Freestyle

1. Paige Bendel (BEE)	53.50
2. Melissa Blandford (EST)	54.72
3. Kerry Frass (MOD)	54.69
4. Jaime Mueller (DC)	56.51
5. Kim Proffitt (HOP)	57.11
6. Kim Hogan (PB)	57.07

#11 400 Yard Freestyle Relay

1. Beechwood	3:46.28
2. Notre Dame Academy	3:48.11
3. Bowling Green	3:48.67
4. Paul Blazer	3:49.77
5. Elizabethtown	3:50.86
6. Hopkinsville	3:54.71

#4 50 Yard Freestyle

1. Paige Bendel (BEE)	24.43
2. Kerry Frass (MOD)	24.84
3. Renan Wisenbaker (MOD)	25.36
4. Jaime Mueller (DC)	25.62
5. Julie Denial (BG)	25.73
6. Kim Hogan (PB)	25.76

#8 500 Yard Freestyle

1. Stephanie Livers (ET)	5:02.82
2. Dyer Ashley (SAY)	5:15.43
3. Teresa Jump (NDA)	5:18.57
4. J.J. Moore (BG)	5:20.00
5. Diana Roberts (ET)	5:21.25
6. Ginger Castle (PB)	5:23.77

1989 K.H.S.A.A. Swimming and Diving Champions

University of Kentucky

FRIDAY AND SATURDAY, MARCH 3 & 4, 1989

BOYS' FINAL RESULTS

Team	200 Yard Medley Relay	200 Yard Freestyle	200 Yard Ind. Medley	50 Yard Freestyle	1 Meter Diving	100 Yard Butterfly	100 Yard Freestyle	500 Yard Freestyle	100 Yard Backstroke	100 Yard Breaststroke	400 Yard Freestyle Relay	TOTAL POINTS
	1.	2.	3.	4.	5.	6.	7.	8.	9.	10.	11.	Total
1. Saint Xavier	26.0	17.0	29.0	14.0	10.0	16.0	23.0	23.0	23.0	13.0	32.0	226.0
2. Elizabethtown	32.0	10.0	18.0	11.0	0.0	23.0	12.0	12.0	25.0	14.0	20.0	177.0
3. Covington Catholic	0.0	7.0	0.0	14.0	0.0	3.0	13.0	10.0	7.0	0.0	26.0	80.0
4. Lafayette	14.0	0.0	12.0	0.0	0.0	0.0	0.0	0.0	26.0	0.0	24.0	76.0
5. Model	24.0	9.0	0.0	5.0	22.0	0.0	3.0	4.0	0.0	0.0	8.0	75.0
6. Bowling Green	10.0	0.0	0.0	3.0	16.0	0.0	13.0	0.0	9.0	0.0	18.0	69.0
7. Paul Blazer	0.0	13.0	11.0	0.0	1.0	0.0	0.0	11.0	0.0	12.0	14.0	62.0
8. Tates Creek	6.0	0.0	0.0	7.0	11.0	4.0	0.0	0.0	0.0	0.0	22.0	50.0
9. Male	22.0	0.0	8.0	0.0	0.0	2.0	0.0	0.0	0.0	7.0	0.0	39.0
10. Eastern	0.0	0.0	0.0	16.0	0.0	0.0	0.0	0.0	0.0	16.0	0.0	32.0
11. Highlands (tie)	2.0	11.0	0.0	0.0	0.0	0.0	11.0	0.0	0.0	0.0	0.0	24.0
11. Hopkinsville (tie)	0.0	3.0	0.0	0.0	7.0	0.0	1.0	3.0	0.0	0.0	10.0	24.0
13. Atherton (tie)	0.0	0.0	10.0	0.0	0.0	13.0	0.0	0.0	0.0	0.0	0.0	23.0
13. Ballard (tie)	0.0	5.0	0.0	0.0	0.0	0.0	5.0	9.0	0.0	4.0	0.0	23.0
13. Manual (tie)	0.0	0.0	0.0	0.0	0.0	10.0	0.0	13.0	0.0	0.0	0.0	23.0
16. Woodford County	20.0	0.0	0.0	0.0	0.0	0.0	0.0	0.0	0.0	0.0	0.0	20.0
17. Shelby County	18.0	0.0	0.0	0.0	0.0	0.0	0.0	0.0	0.0	0.0	0.0	18.0
18. Conner	0.0	4.0	0.0	0.0	12.0	0.0	0.0	1.5	0.0	0.0	0.0	17.5
19. Daviess County	0.0	12.0	0.0	0.0	0.0	0.0	0.0	5.0	0.0	0.0	0.0	17.0
20. Henderson County (tie)	4.0	0.0	0.0	0.0	0.0	0.0	10.0	0.0	0.0	0.0	2.0	16.0
20. Madisonville No. Hopkins (tie)	0.0	0.0	0.0	0.0	9.0	0.0	0.0	0.0	1.0	0.0	6.0	16.0
22. Bourbon County	0.0	0.0	0.0	9.0	0.0	0.0	0.0	0.0	0.0	5.0	0.0	14.0
23. Beechwood (tie)	0.0	0.0	0.0	10.0	0.0	0.0	0.0	0.0	0.0	3.0	0.0	13.0
23. Trinity (tie)	8.0	0.0	0.0	0.0	0.0	5.0	0.0	0.0	0.0	0.0	0.0	13.0
23. Waggener (tie)	0.0	0.0	4.0	0.0	0.0	9.0	0.0	0.0	0.0	0.0	0.0	13.0
26. Kentucky Country Day	0.0	0.0	0.0	0.0	0.0	0.0	0.0	0.0	0.0	10.0	0.0	10.0
27. Lexington Catholic (tie)	0.0	0.0	0.0	0.0	0.0	7.0	0.0	0.0	2.0	0.0	0.0	9.0
27. Simon Kenton (tie)	0.0	0.0	0.0	0.0	0.0	0.0	0.0	0.0	0.0	9.0	0.0	9.0
28. Oneida Baptist	0.0	0.0	0.0	4.0	0.0	0.0	2.0	0.0	0.0	0.0	0.0	6.0
30. Scott	0.0	0.0	0.0	0.0	0.0	0.0	0.0	0.0	0.0	0.0	4.0	4.0
31. Campbellsville	0.0	2.0	0.0	0.0	0.0	0.0	0.0	1.5	0.0	0.0	0.0	3.5
32. Owensboro Catholic	0.0	0.0	0.0	0.0	3.0	0.0	0.0	0.0	0.0	0.0	0.0	3.0
33. Fort Knox	0.0	0.0	0.0	0.0	2.0	0.0	0.0	0.0	0.0	0.0	0.0	2.0
34. Dixie Heights (tie)	0.0	0.0	1.0	0.0	0.0	0.0	0.0	0.0	0.0	0.0	0.0	1.0
34. North Hardin (tie)	0.0	0.0	0.0	0.0	0.0	1.0	0.0	0.0	0.0	0.0	0.0	1.0

BOYS' INDIVIDUAL RESULTS

#1 - 200 Yard Medley Relay

1. Elizabethtown (ET)	1:40.39*
2. Saint Xavier (STX)	1:44.04
3. Model (MOD)	1:49.16
4. Mala (MLE)	1:49.43
5. Woodford County (WC)	1:49.48
6. Shelby County (SHC)	1:51.38

#5 - 1 Meter Diving

1. Nathan Ruff (BG)	350.00
2. Brent Chastain (MOD)	332.75
3. John Bonar (CON)	300.75
4. Greg Leaf (TC)	295.45
5. John Proctor (STX)	278.40
6. Chris Hand (MOD)	267.80

#9 - 100 Yard Backstroke

1. Chris John (STX)	53.77
2. John Godfrey (ET)	54.21
3. Bill Walters (ET)	55.86
4. Ryan Peal (LAF)	56.82
5. Chris Waldhert (LAF)	58.47
6. Jonathan Coombs (BG)	59.78

#2 - 200 Yard Freestyle

1. Ven Stoutt (STX)	1:45.05
2. Jason Gannon (PB)	1:46.23
3. Brian Keller (DC)	1:48.24
4. Deve Sower (HGH)	1:49.91
5. Kevin Petry (ET)	1:49.21
6. Paul Sirek (MOD)	1:50.29

#6 - 100 Yard Butterfly

1. Reid Brown (STX)	53.23
2. Thad Zdobylyak (ATH)	53.36
3. John Godfrey (ET)	54.17
4. Bill Walters (ET)	54.35
5. Chad Cummins (MAN)	54.67
6. Mike Collins (WAG)	55.25

#10 - 100 Yard Breaststroke

1. Rodger McAlister (EST)	59.75
2. Jeff Offutt (STX)	1:02.28
3. Chan Ferguson (PB)	1:02.64
4. Jason McGrew (ET)	1:03.28
5. Jason Town (KCD)	1:03.42
6. Mark Brooks (SK)	1:04.23

#3 - 200 Yard Individual Medley

1. Chris John (STX)	1:58.18
2. David Northup (STX)	2:00.63
3. Ryan Peal (LAF)	2:01.62
4. Chan Ferguson (PB)	2:04.07
5. Thad Zdobylyak (ATH)	2:04.06
6. Jason McGrew (ET)	2:04.21

#7 - 100 Yard Freestyle

1. Ven Stoutt (STX)	48.25
2. J.J. Neubecher (CC)	49.62
3. D.J. Cygeniewicz (ET)	49.94
4. Deve Sower (HGH)	50.02
5. Scott Logan (HEN)	50.65
6. Brad Rudolph (BG)	50.91

#11 - 400 Yard Freestyle Relay

1. Saint Xavier	3:15.65
2. Covington Catholic	3:24.05
3. Lafayette	3:26.55
4. Tates Creek	3:28.39
5. Elizabethtown	3:26.75
6. Bowling Green	3:29.10

#4 - 50 Yard Freestyle

1. Rodger McAlister (EST)	21.34*
2. J.J. Neubecher (CC)	22.57
3. Josh Henderson (STX)	22.81
4. D.J. Cygeniewicz (ET)	22.74
5. Bob Lee (BEE)	22.89
6. Jonathan Lovell (BOU)	23.08

#8 - 500 Yard Freestyle

1. David Northup (STX)	4:47.01
2. Chad Cummins (MAN)	4:47.30
3. Kevin Petry (ET)	4:50.64
4. Jason Gannon (PB)	4:54.08
5. Dave Bresser (CC)	4:56.85
6. Scott Hunt (BAL)	4:58.97

* denotes new state record

1989 GIRLS' GOLF REGIONS

Caldwell County — Ballard Memorial, Caldwell County, Calloway County, Central City, Christian County, Crittenden County, Fort Campbell, Greenville, Henderson County, Hickman County, Hopkinsville, Lone Oak, Lyon County, Madisonville-North Hopkins, Mayfield, Murray, Ohio County, Paducah Tilghman, Reidland, St. Mary, Union County, Webster County, West Hopkins.

Bowling Green — Allen County, Apollo, Barren County, Bowling Green, Butler County, Caverna, Clinton County, Daviess County, Franklin-Simpson, Glasgow, Hart County, Monroe County, Owensboro, Russellville, Warren Central.

Louisville — Atherton, Assumption, Ballard, Butler, Central, Christian Academy, Doss, duPont Manual, Eastern, Evangel, Holy Cross, Holy Rosary, Iroquois, Kentucky Country Day, Louisville Collegiate, Male, Mercy, Pleasure Ridge Park, Portland Christian, Sacred Heart, Shawnee, Southern, Southwest Christian, St. Francis, Valley, Waggener, Western.

Elizabethtown — Adair County, Bardstown, Bethlehem, Boyle County, Breckinridge County, Bullitt Central, Bullitt East, Campbellsville, Danville, East Hardin, Elizabethtown, Fort Knox, Green County, Hancock County, Marion County, Meade County, Nelson County, North Hardin, Taylor County, Washington County, West Hardin.

Owen County — Beechwood, Boone County, Carroll County, Campbell County, Conner, Dayton, Dixie Heights, Eminence, Highlands, Holmes, Holy Cross, Oldham County, Owen County, Notre Dame, Scott, Silver Grove, Trimble County, Villa Madonna, Williamstown.

Woodford County — Bryan Station, Frankfort, Franklin County, Harrodsburg, Henry Clay, Jessamine County, Lafayette, Lexington Catholic, Mercer County, Scott County, Shelby County, Tate's Creek, Western Hills, Woodford County.

Richmond — Belfry, Casey County, Cawood, Corbin, Cumberland, Estill County, Garrard County, George Rogers Clark, Harlan, Jenkins, Knox Central, Laurel County, Lee County, Lincoln County, McCreary Central, Madison Central, Model, Monticello, Pineville, Pulaski County, Russell County, Somerset, Wayne County.

Morehead — Boyd County, Fleming County, Harrison County, Hazard, Johnson Central, McDowell, Mason County, Maysville, Montgomery County, Nicholas County, Paintsville, Paul Blazer, Pikeville, Powell County, Prestonsburg, Raceland, Rowan County, St. Patrick.

1989 BOYS' GOLF REGIONS

Campbell County — Bellevue, Bishop Brossart, Campbell County, Dayton, Fleming County, Grant County, Highlands, Lewis County, Mason County, Maysville, Newport, Newport Central Catholic, Pendleton County, St. Patrick, Silver Grove, Williamstown.

Frankfort — Bourbon County, Bryan Station, Eminence, Frankfort, Franklin County, George Rogers Clark, Harrison County, Henry Clay, Henry County, Lafayette, Lexington Catholic, Montgomery County, Nicholas County, Oldham County, Paris, Sayre, Scott County, Shelby County, Tate's Creek, Western Hills, Woodford County.

Washington County — Adair County, Anderson County, Bardstown, Bethlehem, Boyle County, Burgin, Campbellsville, Casey County, Danville, Garrard County, Green County, Harrodsburg, Jessamine County, Lincoln County, Marion County, Mercer County, Nelson County, Russell County, Taylor County, Washington County.

Somerset — Berea, Bell County, Cawood, Corbin, Cumberland, Estill County, Harlan, Hazard, Knox Central, Laurel County, Lee County, McCreary County, Madison Central, Middlesboro, Model, Monticello, Oneida Baptist Institute, Pineville, Pulaski County, Somerset, Wayne County.

Paintsville — Bath County, Belfry, Betsy Layne, Boyd County, East Carter, Fairview, Greenup County, Elkhorn City, Jenkins, Johnson Central, Lawrence County, McDowell, Paintsville, Paul Blazer, Phelps, Pikeville, Powell County, Prestonsburg, Raceland, Rowan County, Russell, Sheldon Clark.

Lake Barkley — Ballard Memorial, Caldwell County, Calloway County, Christian County, Crittenden County, Fort Campbell, Fulton, Fulton County, Graves County, Hickman County, Hopkinsville, Lone Oak, Lyon County, Marshall County, Mayfield, Murray, Paducah Tilghman, Reidland, St. Mary, Todd County Central, University Heights.

Owensboro — Apollo, Breckinridge County, Central City, Daviess County, Greenville, Hancock County, Henderson County, McLean County, Madisonville-North Hopkins, Meade County, Ohio County, Owensboro, Owensboro Catholic, Providence, South Hopkins, Union County, Webster County, West Hopkins.

Bowling Green — Allen County, Barren County, Bowling Green, Butler County, Caverna, Clinton County, East Hardin, Edmonson County, Elizabethtown, Fort Knox, Franklin-Simpson, Glasgow, Grayson County, Hart County, LaRue County, Monroe County, North Hardin, Russellville, Warren East, Warren Central, West Hardin.

West Jefferson — Beth Haven, Bullitt Central, Bullitt East, Butler, Central, DeSales, Doss, Evangel, Fairdale, Holy Cross, Iroquois, Ninth & O, North Bullitt, Pleasure Ridge Park, Portland Christian, Shawnee, Southern, Southwest Christian, Valley, Western.

East Jefferson — Atherton, Ballard, Christian Academy, duPont Manual, Eastern, Fern Creek, Jeffersontown, Kentucky Country Day, Louisville Collegiate, Male, Moore, St. Francis, St. Xavier, Seneca, Trinity, Waggener.

Covington — Beechwood, Boone County, Carroll County, Conner, Covington Catholic, Covington Latin, Dixie Heights, Gallatin County, Holmes, Holy Cross, Lloyd Memorial, Owen County, St. Henry, Scott, Simon Kenton, Trimble County, Walton-Verona.



REMINDER TO SCHOOLS CONCERNING LIMITATION OF SEASONS

All schools are reminded of the Limitation of Seasons Rules, K.H.S.A.A. By-Law 27, as it applies to competition after the conclusion of the regular season. ALL SPORTS are affected by this rule, which states that following the teams' last regular season match, there shall be no further practice or play as a team for the remainder of the school year, with the exception of the K.H.S.A.A. tournament. Please be sure your coaches are aware of this important rule, and that they are not involved in coaching the team in an outside league, or other competition. For the high school coach, be they the Head Coach or an assistant coach, to coach members of the high school team in a league outside of the school's legal regular season competition, regardless of the type of league, would be a violation of the rules governing the Limitation of Seasons.

ATI, INC TO BEGIN NEW CONCEPT IN FOOTBALL HELMET TECHNOLOGY

Athletic Technology, Inc. has begun a new aggressive format in the manufacturing, selling, fitting, reconditioning, replacing and servicing of football helmets. With home offices to be located in Vienna, West Virginia, this new company hopes to continue to emphasize the safety needs of football players, while at the same time offering a value plan for the member schools who choose to join. Bill Hanlin, long time Commissioner of the West Virginia Secondary School Activities Association, has now been hired as the Executive Director of the company and brings his years of experience in the field to the new position. If you would like further details concerning this company, contact ATI for an informational brochure at (304)375-5824, or write to 431 Victoria Avenue, Williamstown, WV, 26187.

NEWPORT SEEKS BASKETBALL COACH

The Newport Board of Education is now accepting applications for the Boys' Head Basketball Coaching position. Applications for this position will be taken until March 24, 1989 and should be directed to Jim Weyer, Athletic Director, 301 East Eighth Street, Newport, KY 41071.

N.I.A.A.A. TO PRODUCE NEW MANUAL FOR COLLEGE BOUND ATHLETES

The NIAAA is now accepting orders to the "Guide to the College-Bound Student Athlete and their Parents", as well as the "Athletic Administrators Reference Manual." The guide for the college bound athlete was prepared by a special ad hoc committee working under the direction of the NIAAA's Professional Development Committee. The guide has been previewed by representatives of the NCAA, the NIAAA officers, and several members of the National Federation Headquarters staff. This is a tremendous publication that will have a significant impact on hundreds of thousands of potential college student-athletes presently enrolled in high schools represented by the NIAAA membership. The regular price of the guide will be \$2.00 but is now being sold to NIAAA members for only \$1.00 per copy.

For further information, contact the National Federation at P.O. Box 20626, Kansas City, Missouri, 64195.

OPEN DATES SOLICITED FOR FOOTBALL SCHOOLS

Many schools are working on 1989 football schedules with consideration for two year contracts to cover the remainder of the alignment period (1989 and 1990). With this in mind, please submit your open dates to this office so that we may again compile a list to assist you in scheduling. Please submit these open dates in writing and include 1) the game date desired, and 2) a contact name and daytime phone number.

- Week One (August 18) - Fleming-Neon, contact David Jones (606)855-7597. Pineville, contact Tim Saylor (606)337-2361.
- Week Two (August 25) - Bardstown, contact Coach Garnis Martin (502)348-5913. Christian County, contact Coach Dan Goble (502)887-1121. Dixie Heights, contact Don Afterkirk, Athletic Director (606)341-7650. Ironton (OH), contact Mike Burcham, A.D. (614)532-3911. Shelby County, contact Rod Cloyd, Athletic Director (502)633-2443. Tates Creek, contact Assistant Coach Joe Ruddell, (606)272-1513. Williamsburg, contact Coach Bob Rose, (606)549-1915, 3800, or 1737.
- Week Three (September 1) 1989 - Dayton, contact Stan Steidel (606)261-4357. Jefferson City, Jefferson City, Missouri. Contact Pete Adkins (314)636-7171; Notre Dame, Portsmouth, OH. Contact Randy Martin (614)353-4255. Waggener, contact Jack Jacobs or Don Ludwig (502)454-8340. Williamsburg, contact Coach Bob Rose, (606)549-1915, 3800, or 1737.
- Week Four (September 8), 1989 - Fleming-Neon, contact David Jones (606)855-7597. Franklin Simpson, contact Walter Heath (502)586-3273. Perry Meridian in Indianapolis is seeking a game with a Kentucky school. They are Indiana Class 5A (approximately 1500 students, top three grades). Desire home game in 1989, road game in 1990. Contact Noah Ellis, (317)882-4229. Providence, Clarksville, Indiana. Contact Bob Fields, A.D. (812)945-2538. Whitley County, contact Principal Virgil Chambers (606)549-1360.
- Week Five (September 15) 1989 - Christian County, contact Coach Dan Goble (502)887-1121. Dayton, contact Stan Steidel (606)261-4357. Donelson Christian Academy (central Tennessee), Jefferson City, Jefferson City, Missouri. Contact Pete Adkins (314)636-7171. Pineville, contact Tim Saylor, A.D. (606)337-2361.
- Week Six (September 22) 1989 - Edmonson County, contact Gary Meredith, A.D. (502)597-2151. Harpeth, Kingston Springs, Tennessee, contact Coach Bill Cox (615)797-2811. LaRue County (would prefer away), contact Phil Eason (502)358-9200. Russellville, contact Wayne Mullen (502)726-8421.
- Week Seven (September 29) 1989 - Danville, contact Sam Harp (606)236-7957, or (606)236-5437. Jefferson City, Jefferson City, Missouri. Contact Pete Adkins (314)636-7171. Pineville, contact Tim Saylor, A.D. (606)337-2361. Williamsburg, contact Coach Bob Rose, (606)549-1915, 3800, or 1737.
- Week Eight (October 6) 1989 - Amelia (OH), approximately 15 miles SE of Cincinnati, contact Tom Carr (513)753-5120. Christian County, contact Coach Dan Goble (502)887-1121. Elkhorn City, contact Jerry Childers, Athletic Director (606)754-7417 or 9098. Jefferson City, Jefferson City, Missouri. Contact Pete Adkins (314)636-7171. LaRue County (would prefer home), contact Phil Eason (502)358-9200.
-

OPEN FOOTBALL DATES (Continued)

- Week Nine (October 13) 1989 - Jefferson City, Jefferson City, Missouri. Contact Pete Adkins (314)636-7171. Morrow Little Miami High School, just outside of Cincinnati, approximately 530 in top three grades. Contact Rob Blanton (513)899-3781. Pineville, contact Tim Saylor, A.D. (606)337-2361. Russell, contact Jerry Klaiber, A.D. (606)836-9650. St. Xavier (Cincinnati), (approximately 1200 boys), contact Ross Butler, A.D. (513)761-7600, ext. 601. Robert A. Taft, Cincinnati, OH. Contact Raymond Spicher, A.D. (513)381-0890.
- Week Ten (October 20) 1989 - Bardstown, contact Coach Garnis Martin (502)348-5913. Ironton (OH), contact Mike Burcham, A.D. (614)532-3911.
- Week Eleven (October 27) 1989 - LaRue County (would prefer home), contact Phil Eason (502)358-9200.
- Week Twelve (November 3) 1989 - Edmonson County, contact Gary Meredith, A.D. (502)597-2151. Shelby County, contact Rod Cloyd, Athletic Director (502)633-2443.

SCHEDULE OF MEDICAL SYMPOSIUMS

The following is the schedule of the Medical Symposiums required by the State Department of Education for all Head Coaches in K.H.S.A.A. sanctioned sports. A letter is being sent to all schools informing them of this important change approved recently by the State Board of Education. This new regulation requires bi-annual attendance at one of the approved Medical Symposiums. THESE SEMINARS HAVE NOTHING TO DO WITH THE CPR REQUIREMENT. THEY ARE A COMPLETELY SEPERATE REQUIREMENT. Beginning this year, bi-annual attendance is required. If you attended a seminar in 1988, you do not need to attend a 1989 symposium. The schedule for this year is as follows --

- April 22 - University of Louisville (502)637-3636, Dr. Raymond Shea, Suite 150, Audobon Medical Plaza, 40217
- May 20 - Surgical Center, Elizabethtown (502)737-5200, George Hosfield, Surgical Center, 708 Westpost Road, 42701
- July 1 - University of Kentucky, Lexington (606)257-3232, J. Michael Ray, Orthopaedic Surgery, University Medical Plaza, Rose Street, 40536-0223.
- June 10 - Murray-Calloway Hospital, Murray (502)753-5131, Ms. Kathie Pierce, Health-Promotions, 803 Poplar Street, 42071
- June 17 - Trover Clinic, Madisonville (502)825-7200, Dr. James Bowles, Clinic Drive, 42431
- July 22 - Bourbon County Hospital, Paris. Program Chairman - Dr. J. Michael Ray, Orthopaedic Surgery, University Medical Plaza, Rose Street, 40536-0223.
- July 15 - Kentucky Wesleyan College, Owensboro (502)683-2441, Dr. Wm. McManus, P.O. Box 1441, Owensboro, 42301.
- July 21/22- Northern KY University. Mike Miller, Sports Medicine, St. Elizabeth Hospital, 401 East 20th, Covington, 41014.
- July 15 - Ashland. Dr. Garner Robinson, M.D. 700 13th Street, Ashland, KY 41101.
- July 22 - Paintsville. Mary L. Ireland, M.D. (606)276-5266. 1800 South Limestone, Suite 101, Lexington, 40503.
-

CORRECTION CONCERNING SOFTBALL SIZE

The February issue of the "Athlete" contained the minutes of the January Board of Control meeting and stated that the softball size for 1989 would be the eleven inch softball. This is incorrect. For the 1989 State Softball tournament, the twelve ball will continue to be used, with the eleven inch ball becoming the tournament ball in 1990. We apologize for any inconvenience this may have caused.

REMINDER CONCERNING ACADEMIC ALL STATE NOMINATIONS

Last fall, Athletic Directors were mailed the nominations for the Academic All State Teams. The deadline for nominations for athletes in winter sports, basetball, swimming and wrestling, is April 7, 1989. Please remember to submit these nominations, and also keep in mind the requirements which were detailed in the cover letter. One additional point, the grade point average is to based on a 4.0 scale. If your school does not use a 4.0 scale, you will need to convert the g.p.a. numbers to a 4.0 scale in order that the nominations be accepted. Thanks again for your cooperation.

A.C.T. TEST DATES FOR 1989

With the enforcement of the N.C.A.A. Minimum Eligibility Guidelines, it is important to keep up with the test dates for the American College Testing Assessment (ACT test), and the Scholastic Aptitude Test (SAT test).

For the remainder of this school year, the ACT schedule is as follows:

<u>Test Date</u>	<u>Regular Postmark Deadline</u>	<u>Late Deadline</u>
04/15/89	03/17/89	04/04/89
06/10/89	05/12/89	05/30/89

For the remainder of this school year, the SAT schedule is as follows:

<u>Test Date</u>	<u>Registration Deadline</u>
05/06/89	03/31/89
06/03/89	04/28/89

CONGRATULATIONS TO JIM WATKINS, SOUTHERN HIGH SCHOOL

Congratulations to Jim Watkins, Athletic Director at Southern High School has been recognized by the National Interscholastic Athletic Administrators Association as a Certified Athletic Administrator. To earn this distinction, Watkins has demonstrated the highest level of knowledge and expertise in the field of interscholastic athletic administration. Watkins is one of 97 interscholastic athletic administrators nationwide to attain this level of professionalism in 1988. The NIAAA is a national professional organization consisting of all 50 state athletic administrators associations, and more than 5000 individual members. It is dedicated to promoting the professional growth of high school athletic administrators and preserving the educational nature of interscholastic athletics and the place of these programs in the secondary school curriculum. Congratulations again to Jim Watkins, of Southern High School for earning this distinction.

APPROVED DATES FOR FUTURE BOYS & GIRLS STATE BASKETBALL TOURNAMENTS

- 1990 - Girls - March 14 - 17 * Diddle Arena, Bowling Green
 - Boys - March 21 - 24 * Freedom Hall, Louisville
 - 1991 - Boys - March 13 - 16 * Rupp Arena, Lexington
 - Girls - March 20 - 23 * Farnham Dudgeon Civic Center, Frankfort
 - 1992 - Boys - March 18 - 21 * Site to be Determined
 - Girls - March 25 - 28 * Site to be Determined
-

1989 REGIONAL GOLF MANAGERS

BOYS' REGIONAL MANAGERS

Lake Barkley — Buddy Perry, Trigg County High School, Highway 68 East, Box 501A, Cadiz, Kentucky 42211, 502-522-6072.

Owensboro — Ron Peyton, Owensboro High School, 1800 Frederica Street, Owensboro, Kentucky 42301, 502-684-7221.

Bowling Green — Danny Spillman, Bowling Green High School, 1801 Rockingham Lane, Bowling Green, Kentucky 42101, 502-842-1674.

Frankfort — Joe Rogers, Western Hills High School, 100 Doctors Drive, Frankfort, Kentucky 40601, 502-875-2900.

Washington County — Bill Frost, Washington County High School, Lincoln Park Road, Springfield, Kentucky 40069, 606-336-3996.

West Jefferson — Joe Freshley, Doss High School, 7601 St. Andrews Church Road, Louisville, Kentucky 40214, 502-454-8239.

East Jefferson — Marty Donlon, St. Xavier High School, 1609 Poplar Level Road, Louisville, Kentucky 40217, 502-636-2525, 502-637-4712.

Covington — Jack Demming, Lloyd Memorial High School, Box 99, Bartlett Avenue, Erlanger, Kentucky 41015, 606-727-1535.

Campbell County — Tom Hummel/Carl Wenderoth, 3057 Magnolia Court, Edgewood, Kentucky 41017, (Hummel) 606-623-4161, (Wenderoth) 606-825-6085.

Somerset — Jeff Littrell, Somerset High School, College Street, Somerset, Kentucky 42501, 606-678-4721.

Paintsville — Walter Brugh, Paintsville High School, P.O. Box 152, Paintsville, Kentucky 41240, 606-789-3881.

***State Tournament Manager** — John Hackett, 830 McCullum Avenue, Elizabethtown, Kentucky 42701, 502-765-4240.

***Coordinator** — Larry Schmidt, Golf Pro, Kentucky Golf Association, P.O. Box 20146, Louisville, Kentucky 40220.

GIRLS' MANAGERS

Caldwell County — Al Giordana, Caldwell County High School, Box 350, Princeton, Kentucky 42445, 502-365-3531.

Bowling Green — John Strode, Bowling Green High School, 1801 Rockingham Lane, Bowling Green, Kentucky 42101, 502-842-1674.

Louisville — Raymond Kuhn, Ballard High School, 6000 Brownsboro Road, Louisville, Kentucky 40222, 502-895-0567.

Elizabethtown — Pat Wise, Elizabethtown High School, 620 North Mulberry Street, Elizabethtown, Kentucky 42701, 502-769-3381.

Woodford County — Lou Brown, Jessamine County High School, Route 4, Nicholasville, Kentucky 40356, 606-887-2421.

Owen County — Gran Mefford, Owen County High School, Route 4, Owenton, Kentucky 40359, 502-484-5509.

Richmond — Sue Tussey, Madison Central High School, 705 North Second Street, Richmond, Kentucky 40475, 606-623-1530.

Morehead — Dr. Ron Walke, Rowan County High School, Route 5, Morehead, Kentucky 40351, 606-784-7721.

State Manager — Lou Brown, Jessamine County High School, Route 4, Nicholasville, Kentucky 40356, 606-887-2421 (School) 606-385-3952 (Home).



1989 REGIONAL TENNIS MANAGERS - BOYS AND GIRLS

Bowling Green (Boys & Girls) — Todd Metcalfe, Bowling Green High School, 1801 Rockingham Lane, Bowling Green, Kentucky 42101, 502-842-1674/782-2593.

Henderson County (Boys & Girls) — Nonnie Harper, Henderson County High School, 2424 Zion Road, Henderson, Kentucky 42420, 502-827-2506.

Elizabethtown (Boys & Girls) — David Rogers, Morningside Elementary School, Morningside Drive, Elizabethtown, Kentucky 42701, 502/769-3359/737-4658.

East Jefferson (Girls) — Bob Roos, Ballard High School, 6000 Brownsboro Road, Louisville, Kentucky 40222, 502-454-8206/425-7687.

East Jefferson (Boys) — John Dover, Kentucky Country Day High School, 4100 Springdate Road, Louisville, Kentucky 40241, 502-423-0440.

Central Jefferson (Girls) — Jay Levine, Male High School, 911 South Brook Street, Louisville, Kentucky 40203, 502-454-8292/491-4817.

Central Jefferson (Boys) — Joseph Kroh, St. Xavier High School, 1609 Poplar Level Road, Louisville, Kentucky 40217, 502-637-4712/459-6586.

Paris (Boys & Girls) — Wilson Sears, Bourbon County High School, 3343 Lexington Road, Paris, Kentucky 40361, 606-987-2550.

West Jefferson (Boys & Girls) — Kevin Salyer, Doss High School, 7601 St. Andrews Church Road, Louisville, Kentucky 40214, 502-454-8239/239-6793.

Murray (Boys & Girls) — Larry J. Hefflin, 8145 Houser Road, Boaz, Kentucky 43037, 502-554-1820/554-5852.

Lexington (Boys & Girls) — Bill Goodan, Henry Clay High School, 2100 Fontaine Road, Lexington, Kentucky 40502, 606-269-3376.

Northern Kentucky (Boys & Girls) — Red Bartlett & Merita Thelen, 44 East Ridge Road, Newport, Kentucky 41071, 606-291-6520.

Richmond (Boys & Girls) — Jerry Johns, Box 308, Somerset, Kentucky 40251, 606-678-5610/679-8501

Barbourville (Boys & Girls) — Bob Duricko, 201 Grayson Street, Barbourville, Kentucky 40906, 606/546-8556/546-4459.

Ashland (Boys & Girls) — Mary Robinson, Russell High School, Red Devil Drive, Russell, Kentucky 41169, 606-836-9658/836-4330.



1989 GIRLS' TENNIS REGIONS

Murray — Ballard Memorial, Caldwell County, Calloway County, Christian County, Fort Campbell, Graves County, Heath, Hopkinsville, Lone Oak, Lyon County, Marshall County, Mayfield, Murray, Paducah Tilghman, Providence, Reidland, St. Mary, University Heights, West Hopkins.

Bowling Green — Allen County, Barren County, Bowling Green, Butler County Caverna, Cumberland County, Franklin-Simpson, Glasgow, Hart County, Logan County, Metcalfe County, Monroe County, Muhlenberg Central, Russellville, St. Romuald, Warren Central, Warren East.

Henderson County — Apollo, Bremen, Central City, Daviess County, Greenville, Hancock County, Henderson County, McLean County, Madisonville-North Hopkins, Ohio County, Owensboro, Owensboro Catholic, South Hopkins, Trinity (Whitesville), Union City, Webster County.

Elizabethtown — Adair County, Bardstown, Bethlehem, Breckinridge County, Bullitt East, Bullitt Central, Campbellsville, East Hardin, Elizabethtown, Fort Knox, Grayson County, Green County, LaRue County, Marion County, Meade County, Nelson County, North Bullitt, North Hardin, Spencer County, Taylor County, Washington County.

East Jefferson — Assumption, Ballard, Eastern, Fern Creek, Jeffersontown, Kentucky Country Day, Oldham County, Sacred Heart, Seneca, Waggener, Walden.

Central Jefferson — Atherton, Central, Christian Academy, DeSales, duPont Manual, Evangel, Louisville Collegiate, Male, Mercy Academy, Moore, Ninth & O, Portland Christian, Presentation, St. Francis, Shawnee.

West Jefferson — Butler, Doss, Fairdale, Holy Cross, Holy Rosary, Iroquois, Pleasure Ridge Park, Southern, Valley, Western.

Fort Thomas — Augusta, Beechwood, Bellevue, Boone County, Campbell County, Carroll County, Conner, Dayton, Dixie Heights, Gallatin County, Henry County, Highlands, Holmes, Holy Cross, Lloyd Memorial, Newport, Newport Central Catholic, Notre Dame, St. Henry Scott, Simon Kenton, Trimble County, Villa Madonna.

Lexington — Anderson County, Bryan Station, Frankfort, Franklin County, Henry Clay, Jessamine County, Lafayette, Lexington Catholic, Sayre County, Tates Creek, Western Hills, Woodford County.

Richmond — Berea, Boyle County, Danville, Estill County, Garrard County, George Rogers Clark, Harrodsburg, Lincoln County, Madison Central, Mercer County, Middlesboro, Model, Rockcastle County.

Barbourville — Barbourville, Bell County, Clay County, Corbin, Cumberland, Harlan, Hazard, June Buchanan, Knott County Central, Knox Central, Laurel County, Leslie County, Oneida, Pineville, Pulaski County, Russell County, St. Camillus, Somerset, Whitesburg.

Ashland — Bath County, Belfry, Betsy Layne, Boyd County, Buckhorn, East Carter, Elkhorn City, Greenup County, Johns Creek, Lawrence County, McDowell, Magoffin County, Montgomery County, Morgan County, Paintsville, Paul Blazer, Phelps, Prestonsburg, Rowan County, Russell, Sheldon Clark, Wolfe County.

Paris — Bourbon County, Bracken County, Deming, Fleming County, Harrison County, Lewis County, Mason County, Maysville, Millersburg Military Institute, Nicholas County, Paris, Pendleton County, St. Patrick, Scott County.



1989 BOYS' TENNIS REGIONS

Murray — Ballard Memorial, Caldwell County, Calloway County, Christian County, Fort Campbell, Graves County, Heath, Hopkinsville, Lone Oak, Lyon County, Marshall County, Mayfield, Murray, Paducah Tilghman, Providence, Reidland, St. Mary, University Heights, West Hopkins.

Bowling Green — Allen County, Barren County, Bowling Green, Butler County, Caverna, Cumberland County, Franklin-Simpson, Glasgow, Hart County, Logan County, Metcalfe County, Monroe County, Russellville, Warren Central, Warren East.

Henderson County — Apollo, Bremen, Central City, Daviess County, Greenville, Hancock County, Henderson County, McLean County, Madisonville-North Hopkins, Muhlenberg Central, Ohio County, Owensboro, Owensboro Catholic, South Hopkins, Trinity (Whitesville), Union County, Webster County.

Elizabethtown — Adair County, Bardstown, Bethlehem, Breckinridge County, Bullitt East, Bullitt Central, Campbellsville, East Hardin, Elizabethtown, Fort Knox, Grayson County, Green County, LaRue County, Marion County, Meade County, Nelson County, North Bullitt, North Hardin, Spencer County, Taylor County, Washington County.

East Jefferson — Ballard, Eastern, Fern Creek, Jeffersontown, Kentucky Country Day, Oldham County, Seneca, Trinity, Waggener, Walden.

Central Jefferson — Atherton, Central, Christian Academy, DeSales, duPont Manual, Evangel, Louisville Collegiate, Male, Moore, Ninth & O, Portland Christian, St. Francis, St. Xavier, Shawnee.

West Jefferson — Butler, Doss, Fairdale, Holy Cross, Iroquois, Pleasure Ridge Park, Southern, Southwest Christian, Valley, Western.

Lexington — Anderson County, Bryan Station, Frankfort, Franklin County, Henry Clay, Jessamine County, Lafayette, Lexington Catholic, Sayre, Shelby County, Tates Creek, Western Hills, Woodford County.

Richmond — Berea, Boyle County, Danville, Estill County, Garrard County, George Rogers Clark, Harrodsburg, Lincoln County, Madison Central, Mercer County, Model, Rockcastle County.

Barbourville — Barbourville, Bell County, Clay County, Corbin, Cumberland, Harlan, Hazard, June Buchanan, Knott County Central, Knox Central, Laurel County, Leslie County, Middlesboro, Oneida, Pineville, Pulaski County, Russell County, St. Camillus, Somerset, Whitesburg.

Ashland — Bath County, Belfry, Betsy Layne, Boyd County, Buckhorn, East Carter, Elkhorn City, Greenup County, Johns Creek, Lawrence County, McDowell, Magoffin County, Montgomery County, Morgan County, Paintsville, Paul Blazer, Prestonsburg, Rowan County, Russell, Sheldon Clark, Wolfe County.

Fort Thomas — Augusta, Beechwood, Boone County, Campbell County, Carroll County, Conner, Covington Catholic, Covington Latin, Dayton, Dixie Heights, Gallatin County, Henry County, Highlands, Holmes, Holy Cross, Lloyd Memorial, Newport, Newport Central Catholic, St. Henry, Scott, Simon Kenton, Trimble County.

Paris — Bourbon County, Deming, Fleming County, Harrison County, Lewis County, Mason County, Maysville, Millersburg Military Institute, Nicholas County, Paris, Pendleton County, St. Patrick, Scott County.

ATTENTION**Track Coaches**

The State High School Track Meet all classes will be held on Saturday, May 27, 1989, at the University of Kentucky Sports Center in Lexington. The State Manager is John Gettler.

**1989 Track & Field Regional Managers
(Boys and Girls)**
CLASS A

1. **Paducah Tilghman High School** — Lyman Brown, P.O. Box 2550, Paducah 42001, 502/444-5627, 443-4879.
2. **Providence/Murray State** — Willis Simpson, Providence High School, 227 Cedar Street, Providence 42450, 502/667-7065.
3. **Boone County** — Tim Schlotman, Boone County High School, 7056 Burlington Pike, Florence 41042, 606/283-2795.
4. **Lexington** — Frank Miklavcic, Frankfort High School, 328 Shelby Street, Frankfort 40601, 502/223-8030.
5. **Kentucky Country Day** — Gene Moutoux, Kentucky Country Day, 4100 Springdale Road, Louisville 40222, 502/348-5913.
6. **Berea College** — Bill Patton, Berea High School, Ellipse Street, Berea 40403, 606/986-4911, 606/986-4375.
7. **Pikeville** — Larry Belcher, Pikeville High School, 116 N. Mayo Trail, Pikeville 41501, 606/432-0186.
8. **Jenkins** — Glenn Polly, Box 552, Jenkins 41537, 606/832-2184, 606/832-2759

CLASS AA

1. **Paducah Tilghman High School** — Lyman Brown, P.O. Box 2550, Paducah 42001, 502/444-5627, 443-4879.
2. **Barren County** — Terry Reed, Barren County High School, Route 6 Glasgow, 42141, 502/651-6315, 502/651-6552.
3. **Fort Knox** — Mike McCoy/Dave Shufelt, Fort Knox High School, 7501 Missouri Street, Fort Knox 40121, 502/624-6647.
4. **Lexington** — Jean Wright, #41 Timberlawn Circle, Frankfort 40601, 502/695-2081.
5. **Boone County** — Tim Schlotman, Boone County High School, 7056 Burlington Pike, Florence 41042, 606/283-2795.
6. **Lexington** — Jean Wright, #41 Timberlawn Circle, Frankfort 40601, 502/695-2081.
7. **Russell** — Alice Leigh/Jim Epling, Russell Middle School, Russell, 41169 606/836-8135.
8. **Belfry** — Trena Noble, Belfry High School, P.O. Box 160, Belfry 41514, 606/353-7239, 606/237-6328

CLASS AAA

1. **Henderson County** — Bob Mulcahy, Henderson County High School, 2424 Zion Road, Henderson 42420, 502/827-2506.
2. **Bullitt Central** — Bill Ranney, Bullitt Central High School, P.O. Box 159, Shepherdsville 40165, 502/543-7021, 451-6125.

3. **Boone County** — Tim Schlotman, Boone County High School, 7056 Burlington Pike, Florence 41042, 606/283-2795.
4. **Male** — Jay Levine, Male High School, 911 S. Brook Street, Louisville 40203, 502/454-8292.
5. **Iroquois** — Mike McDaniel, Iroquois High School, 4515 Taylor Boulevard, Louisville 40215, 502/454-8269.
6. **Eastern/Trinity** — Bro. Charles Cully, Trinity High School, 4011 Shelbyville Road, Louisville 40207, 502/895-6765.
7. **Lexington** — Jean Wright, Timberlawn Circle, #41, Frankfort 40601, 502/695-2081.
8. **Bell County** — John Brock, Bell County High School, Route 1, Box 88, Pineville 40477, 606/337-7061.

**1989 Track & Field Sectional Managers
(Boys & Girls)**
CLASS A

Section 1: Regions 1 & 2, Daviess County High School — Will Pagan, Daviess County High School, 4255 New Hartford Road, Owensboro 42301, 502/684-5285.

Section 2: Regions 3 & 4, Lexington/Frankfort — Frank Miklavcic, Frankfort High School, 328 Shelby Street, Frankfort 40601 502/223-8030

Section 3: Regions 5 & 6, Berea College — Bill Patton, Berea High School, Ellipse Street, Berea 40403 606/986-4911

Section 4: Regions 7 & 8, Clay County High School — Rick Coffey, Oneida Baptist Institute, Mulberry Street, Box 67, Oneida 40972 606/847-4111

CLASS AA

Section 1: Regions 1 & 2, Daviess County High School — Will Pagan, Daviess County High School, 4255 New Hartford Road, Owensboro 42301 502/684-5285

Section 2: Regions 3 & 4, Fort Knox High School — Dave Shufelt, Fort Knox High School, 7501 Missouri Street, Fort Knox 40121 502/624-6647

Section 3: Regions 5 & 7, Undecided

Section 4: Regions 6 & 8, Lexington, — Jean Wright, 41 Timberlawn Circle, Frankfort 40601 502/695-2081

CLASS AAA

Section 1: Regions 1 & 2, Daviess County High School — Will Pagan, Daviess County High School, 4255 New Hartford Road, Owensboro 42301 502/684-5285

Section 2: Regions 3 & 5, Iroquois High School — Mike McDaniel, Iroquois High School, 4615 Taylor Boulevard, Louisville 40215 502/695-8693

Section 3: Regions 4 & 6, St. Xavier High School — Bro. Borgia, St. Xavier High School, 1609 Poplar Level Road, Louisville 40217 502/637-4712, 635-5300

Section 4: Regions 7 & 8, Lexington/Frankfort — Jean Wright, #41 Timberlawn Circle, Frankfort 40601 502/695-2081





Official Nomination Form

Dawahares – Kentucky High School Athletic Association Hall of Fame

The Dawahares – Kentucky High School Athletic Association Hall of Fame is open to anyone who has played, officiated or administered high school athletics at any Kentucky high school, past or present, and to anyone who has been of service to Kentucky high school athletics.

This nomination form may be duplicated and used to nominate an unlimited number of potential members. Any person may make a nomination. In particular, principals, superintendents, athletic directors and coaches are requested to make nominations.

THE DEADLINE FOR RETURNING THIS FORM IS APRIL 15, 1989 FOR THE 1990 CLASS OF INDUCTEES. PLEASE RETURN THE FORM TO —

Earl Cox
Dawahares – K.H.S.A.A. Hall of Fame
c/o Kentucky High School Athletic Association
P.O. Box 22280
Lexington, KY 40522

* * * * *

Nomination Form (please print or type all information)

Name of person nominated: _____

Address of person being nominated: _____
(or surviving relative if deceased) _____

City, State, Zip: _____

Telephone of person being nominated: _____

Briefly list accomplishments of nominee: _____

List names of school(s) where nominee was involved: _____

This nomination form is for the 1990 banquet which is tentatively scheduled for Tuesday, March 20, 1990.

All nominations will be forwarded to the Hall of Fame Selection Committee to be appointed by the President of the Kentucky High School Athletic Association Board of Control.

* * * * *

The first class of inductees into the Dawahares - Kentucky High School Athletic Association Hall of Fame were -- Ralph Bear, Ralph Carlisle, L.J. "Butch" Charmoli, Blanton Collier, Morton Combs, Ralph Dorsey, Geri Grigsby, Cliff Hagan, Clem Haskins, Peck Hickman, Stephanie Hightower-Leftwich, Paul Hornung, Wallace "Wah" Jones, W.L. Kean, Roy Kidd, Frank "Dr." Litkenhous, Garnis Martin, Mary T. Meagher, Letcher Norton, Joe Ohr, Homer Rice, Ted Sanford, J.W. "Spider" Thurman, John Bill Trivette, S.T. Roach and Russ Williamson.

The second induction ceremony for the Dawahares - Kentucky High School Athletic Association Hall of Fame was March 14, 1989 at the Marriott Griffin Gate Resort. The 1989 inductees were Gay Brewer, E. A. "Ed" Diddle, Stella Gilb, Butch Beard, Tommy Bell, Jerry Claiborne, Howard Crittenden, Lyman Ginger, Delmas Gish, Bill Harrell, Clemette Haskins, Preston "Ty" Holland, Earle Jones, Harry Jones, Larry Jones, Kenny Kuhn, Lenny Lyles, Joe Billy Mansfield, Lawrence McGinnis, Paulie Miller, Donna Murphy, Frank Ramsey, Bev Ramser, McCoy "Red" Tarry, and Westley Unself.

ATTENTION
Track Coaches



TRACK ALIGNMENT

CLASS A
(0 - 435)

REGION 1
Ballard Memorial
Carlisle County
Fulton City
Fulton County
Heath
Hickman County
Mayfield
Murray
St. Mary

REGION 2
Bremen
Crittenden County
Edmonson County
Hancock County
Lyon County
Providence
Russellville
South Hopkins
Todd County Central
West Hopkins

REGION 3
Bellevue
Bishop Brossart
Carroll County
Covington Latin
Dayton
Ludlow
Newport Central Catholic
Silver Grove
St. Henry
Walton-Verona

REGION 4
Adair County
Casey County
Green County
McCreary Central
Russell County
Taylor County

REGION 5
Covington Cath.
Grant County
Harrison County
Highlands
Lloyd Memorial
Newport
Scott
Simon Kenton
Western Hills

REGION 6
Anderson County
Boyle County
Cawood
Clay County
Estill County
Jackson County
Madison Southern
Marion County
Mercer County
Middlesboro

REGION 7
Bourbon County
East Carter
Fleming County
Lawrence County
Lewis County
Mason County
Paul Blazer
Powell County
Rowan County
Russell
West Carter

REGION 8
Belfry
Betsy Layne
Breathitt Couy
Knott County Central
Leslie County
Magoffin County
Morgan County
Sheldon Clark
Whitesburg

REGION 4
Augusta
Frankfort
Harrodsburg
Henry County
Lexington Catholic
Millersburg Mil. Inst.
Nicholas County
Owen County
Paris
Sayre

REGION 5
Bardstown
Bethlehem
Campbellsville
Caverna
Christian Academy
Cumberland County
Kentucky Ctry. Day
Spencer County
Washington County

REGION 6
Berea
Central Ky. Christian
Corbin
Danville
Garrard County
Ky. School f/t Deaf
Madison
Model
Somerset
St. Camillus
Williamsburg

CLASS AAA
(800 - Up)

REGION 1
Apollo
Christian County
Davies County
Graves County
Henderson County
Hopkinsville
Madisonville-
North Hopkins
Marshall County
Owensboro

REGION 2
Bowling Green
Bullitt Central
Grayson County
Meade County
Nelson County
North Bullitt
North Hardin
Ohio County
Warren Central

REGION 3
Boone County
Campbell County
Conner
Dixie Heights
Holmes
Notre Dame

REGION 7
Allen Central
Cordia
Elliott County
Elkhorn City
Fairview
John's Creek
Menifee County

Mullins
Paintsville
Phelps
Pikeville
Prestonsburg
Raceland
Virgie

REGION 8
Bath County
Cumberland
Dice Combs
Evarts
Fleming-Neon
Harlan
Hazard
Jenkins
Letcher
Oneida Bapt. Inst.

REGION 4*
Assumption
Atherton
Brown
Butler
Central
Fern Creek
duPont Manual
Male
Moore
Shawnee
Southwest Christian
St. Xavier

REGION 5*
DeSales
Doss
Evangel
Fairdale
Holy Cross
Holy Rosary
Iroquois
Mercy
Pleasure Ridge Pk.
Southern
Valley
Western

REGION 6*
Ballard
Eastern
Jeffersontown
Louisville Collegiate
Oldham County
Presentation
Sacred Heart
Seneca
Shelby County
Trinity
Waggener
Walden

CLASS AA
(436 - 799)

REGION 1
Caldwell County
Calloway County
Fort Campbell
Lone Oak
McLean County
Paducah Tilghman
Reidland
Trigg County
Union County
Webster County

REGION 2
Allen County-
Scottsville
Barren County
Butler County
Franklin-Simpson
Glasgow
Hart County
Logan County
Monroe County
Warren East

REGION 3
Breckinridge County
Bullitt East
East Hardin
Elizabethtown
Fort Knox
LaRue County
Owensboro Catholic
West Hardin

REGION 7
Bryan Station
Franklin County
George Rogers Clark
Henry Clay
Jessamine County
Lafayette
Scott County
Tates Creek
Woodford County

REGION 8
Bell County
Boyd County
Greenup County
Johnson Central
Knox Central
Laurel County
Lincoln County
Madison Central
Montgomery County
Pulaski County
Whitley County

★ **Corrections to the Jan. 21, 1989** ★
Board Meeting Minutes

Upon the recommendation of Commissioner Mills, Marvin Moore made a motion, seconded by Charles Henry, that the Commissioner be empowered to grant each team that participated in the **State Football Playoff Finals \$1200.00** to help defray expenses. The motion carried unanimously.

Asst. Comm. Stout recommended to the Board that an 11" softball be used in the **1990 State Softball Tournament**. Tony Olinger moved to accept the recommendation. Pearl Lefevers seconded the motion which passed unanimously.

In Class AAA, (*) Regions 4, 5 and 6 will rotate sections during the four year alignment period. For **1988**, Region 4 will be paired with Region 3 to form Section 2 and Regions 5 and 6 will form Section 3; for **1989**, **Region 5 will be paired with Region 3 to form Section 2, and Regions 4 and 6 will form Section 3**; for 1990, Region 6 will be paired with Region 3 to form Section 2, and Regions 4 and 5 will form Section 3; and for 1991, Region 4 will be paired with Region 3 to form Section 2 and Regions 5 and 6 will form Section 3.

Baseball Committee Meeting continued from page 2.

There was some discussion on this issue.

Mike Elkins, Umpire, Bluegrass Baseball Association, was asked what umpires' fees are in Kentucky during the summer league for both high school and college level. Mr. Elkins explained that high schools are presently the lowest paying organizations and this was a contributing factor to the low quality of baseball officials.

Mac Whitaker (Harrison County) made a motion to have Gilbert Wilson (Pulaski County) research the current fee structure among the different umpire associations throughout Kentucky and make a formal recommendation to the K.H.S.A.A. The recommendation is to be submitted prior to finals of the Kentucky Girls' State Basketball Tournament, March 22-25.

The motion was seconded by Mike Sander. The motion passed unanimously.

The next item of business was the need for the K.H.S.B.C.A. annual clinic to continue. There was a short discussion on why the annual clinics had been dropped.

Bill Wayne (Henderson County) made a motion to hold mandatory rules clinics on baseball for both coaches and umpires. His motion also included naming sites and setting dates for the clinics. In addition, mandatory clinics would be held during the winter and on Saturdays with dates and times to be announced at a later date. Mac Whitaker (Harrison County) seconded the motion. The motion passed unanimously.

Commissioner Stout has responsibility for arranging the clinics. Sites for the clinics were announced and are: Owensboro, Louisville, Lexington, North Kentucky, Ashland and London. Commissioner Stout will list dates and times on the Kentucky High School events and activities calendar.

Mac Whitaker (Harrison County) made a motion to survey members of the K.H.S.B.C.A. requesting their comments and opinions concerning pitching limitations. Additionally, Bob Mantoath (Owensboro Apollo) will conduct the survey and submit written recommendations to the K.H.S.A.A., as it complies with rules and procedures of the National Federation. The deadline for receipt of recommendations to the K.H.S.A.A. is January 1990.

The next item of business was coaches' uniforms. Committee members agreed that coaches pants are acceptable as long as they are similar to their teams' uniforms.

The next item of business concerned the limit on the number of players a team may take to the state final four. Joe White (Louisville St. Xavier) made a motion to adhere to the K.H.S.A.A. rule limiting the number of players to 21 allowed in the dugout during all post season play. Jody Hamilton (Boyd County) seconded the motion. The motion passed unanimously.

Bill Wayne (Henderson County) then made a motion that the K.H.S.A.A. provide lodging and meal expenses for 21 players and three (3) coaches from each team for the state final four. Mike Sander seconded the motion. The motion passed unanimously.

Commissioner Stout then asked if there was other business.

Mike Elkins (Bluegrass Baseball Association) made a motion to change the traditional dark blue umpire's pants to grey, keeping the powder blue top. Mr. Elkins remarked that grey had the appearance of keeping cleaner since it did not show dust and dirt as well. Mac Whitaker (Harrison County) seconded the motion. The motion passed unanimously.

Bill Wyne (Henderson County) then made a motion that the final game of the Kentucky state high school baseball tournament be played at 7:00 p.m. This should allow more parents and fans to attend the game since it would not conflict with normal working hours during the day. Dave Thomas (Pikeville) seconded the motion. The motion passed unanimously.

Commissioner Stout asked if there was any other business. Being no further business, the meeting was adjourned until the K.H.S.B.C.A. annual clinic, November 1989.

Respectfully submitted,

Mac Whitaker
Baseball Coach, Harrison County High School
Assistant Chairman, K.H.S.B.C.A. Baseball Committee



1989 ANNUAL MEETING OF THE DELEGATE ASSEMBLY

The Business meeting of the Delegate Assembly of the Kentucky High School Athletic Association will be held on Friday, April 21, 1989 at 11:00 a.m. at the K.H.S.A.A. Office Building, 560 East Cooper Drive, Lexington, Kentucky.

As provided in Article IX, Section 1, of the K.H.S.A.A. Constitution, the following proposals for changes in the rules of the Association, to be acted upon at the annual meeting, are hereby submitted to all members of the K.H.S.A.A. for their information. No proposals other than these may be considered at the Annual Meeting, except by a two-thirds vote of the delegates.

PROPOSAL I

Principal Larry A. Gritton, Oneida Baptist Institute proposes that a section "e" be added to By-Law 6, Transfer Rule, to read as follows: "The Commissioner may waive the Transfer Rule on a one-time basis for students attending a boarding school on a full time basis as a boarding student who are placed there through recommendation of the courts or upon the recommendation of the principal of their previous school."

PROPOSAL II

Principal Blake Halselton, Oldham County High School and Arnold E. Holbery, Head of Louisville Collegiate School propose that a section be added to By-Law 6, Transfer Rule to permit the Commissioner to waive the rule for "foreign exchange students participating in United State Information Agency-designated Teenage Exchange Visitor Programs who meet all other requirements of the Eligibility Rules and Regulations, may be granted a waiver from the period of ineligibility valid only for one school year. Any approved exchange student who seeks eligibility for a second year will be subject to all provisions of the Transfer Rule, including the 36-week ineligibility period. The Commissioner may not waive the Transfer Rule under any circumstance for a student who is a graduate of a foreign school equivalent to our 12-year program".

PROPOSAL III

The Board of Control of the Kentucky High School Athletic Association proposes that By-Law 3, Age be changed to read as follows: "A student who becomes nineteen (19) years old before August 1 shall be ineligible for interscholastic athletic competition (NOTE: a student who becomes 19 on or after August 1 shall remain eligible for the entire school year.)"

LOWE'S

Sporting Goods

901 N. MAIN - LONDON, KY 40741

TOLL
FREE

1-800-442-0132
PHONE: (606) 864-2207

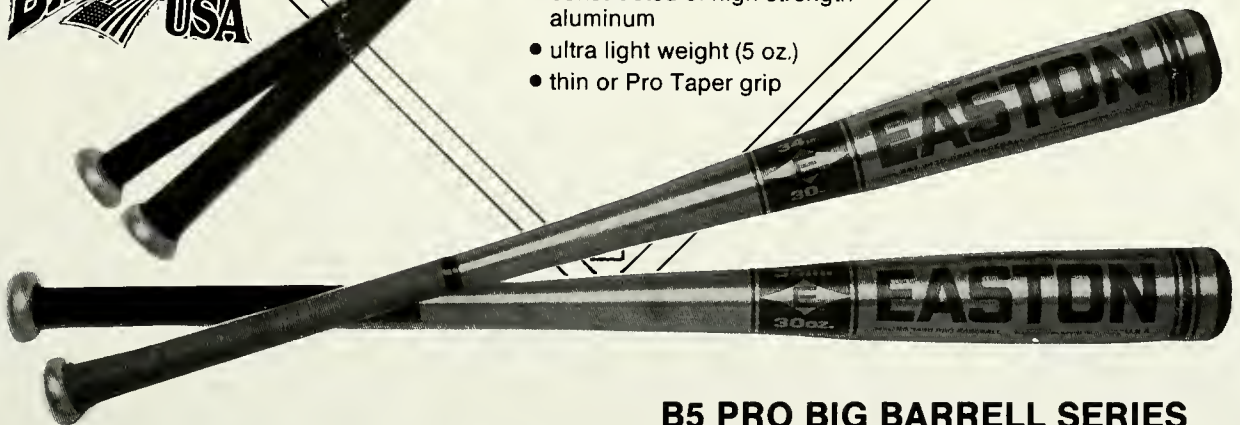
DIAMOND

Baseball



BX SERIES

- constructed of high strength aluminum
- ultra light weight (5 oz.)
- thin or Pro Taper grip



B5 PRO BIG BARRELL SERIES

- constructed of high alloy
- thin, regular or pro taper grip
- weighted at 4 oz.
- Pro Long Barrel version weighted at 2 oz.

EASTON

Certificates!



R8



R13



R14



R26



R27



R28

8 1/2 x 11" on Parchtone Paper Order by Certificate No.

10¢ Each...\$6.00/100 Alike

Order your certificates now for end-of-school year presentations.
And, of course, if you have any questions, call us toll-free!

R1-Certificate of Accomplishment
R2-Certificate of Award
R3-Certificate of Achievement Award
R8-Certificate of Participation
R9-Certificate of Achievement
R10-Certificate of Achievement
R12-Wrestling Award
R13-Tennis Award

R14-Soccer Award
R15-Golf Award
R16-Bowling Award
R17-Cheerleading Award
R18-Basketball Award
R19-Volleyball Award
R20-Band Award
R21-Baseball Award

R22-Track Award
R23-Football Award
R24-Softball Award
R25-Sports Award
R26-Recognition Award
R27-Attendance Award
R28-Service Award

We Have Custom Ribbons, Too!

Richard's

231 W. Main
Glasgow, Ky. 42141-0498
1-800-274-4373

Kentucky High School Athletic Association
P.O. Box 22280
Lexington, KY 40522

Non-Profit Org.
U.S. Postage
PAID
Richmond, KY
Permit No. 108