

8-1-1990

The Athlete, August 1990

Kentucky High School Athletic Association

Follow this and additional works at: <http://encompass.eku.edu/athlete>

Recommended Citation

Kentucky High School Athletic Association, "The Athlete, August 1990" (1990). *The Athlete*. Book 353.
<http://encompass.eku.edu/athlete/353>

This Article is brought to you for free and open access by the Kentucky High School Athletic Association at Encompass. It has been accepted for inclusion in The Athlete by an authorized administrator of Encompass. For more information, please contact Linda.Sizemore@eku.edu.

THE A T H L E T E

August 1990

Volume LII, No. 1



Official Publication of
The Kentucky High School
Athletic Association

Member of National Federation of State High School Associations

**K
E
N
T
A
R
G
E
T
U
C
K
Y**



Catalog Number	Title	Length	Check Film
VC0001-A-E	Do We Or Don't We?	17 Min.	_____
VC0002-A-E	Him Or Me?	4 Min.	_____
VC0003-A-E	Alcohol Trigger Films: The Ride The Party The Mother	7 Min.	_____
VC0004-A-E	Hidden Dangers	14 Min.	_____
VC0005-A-E	Anything To Be A Big Boy	4 Min.	_____
VC0006-A-E	Alcohol - The Unlabeled Drug	14 Min.	_____
VC0007-A-E	MTV: It's Your Right To Say "NO"	4 Min.	_____
VC0008-A-E	Should He Tell?	5 Min.	_____
VC0009-A-E	Is It Time To Stop Pretending?	5 Min.	_____
VC0010	Face To Face - On The Level	15 Min.	_____
VC0011-A-D	Carolyn Cade Interviews		_____
VC0012-A-E	Lots Of Kids Like Us	28 Min.	_____
VC0013-A-E	Soft Is The Heart Of A Child	30 Min.	_____
VC0014-A-E	Sons and Daughters/Drugs and Booze	28 Min.	_____
Choose To Lead:			
VC0015-A-C	Module I-Choose Life and Leadership	90 Min.	_____
VC0016-A-C	Module II-Get Others Involved	90 Min.	_____
VC0017-A-C	Module III-Turn Energy Into Action	90 Min.	_____
VC0018-A-E	The Rally	28 Min.	_____
VC0019-A-D	No Matter How You Say It . . . Say No (Isiah Thomas)	11 Min.	_____
VC0020-A-E	Crackdown I (3rd-9th)	25 Min.	_____
VC0021-A-E	Crackdown II (10th-Col.)	21 Min.	_____
VC0022-A-E	Crackdown III (parents/teachers)	50 Min.	_____
VC0023-A-E	Benny and The Roids	25 Min.	_____

Person Requesting Videos _____
 Name of School _____
 Address of School _____
 Phone Number _____
 Use Date _____
 Alternate Date _____
 Due Date _____

PLEASE NOTE: Upon showing the video or utilizing the materials, you are responsible for returning them immediately to: The K.H.S.A.A., P.O. Box 22280, Lexington, KY 40522

Please send the videos FIRST CLASS. The minimal cost will be \$2.40 to \$3.00. Other schools may have the videos booked.

OUR TOLL FREE NUMBER - 1-800-248-3234

The Kentucky High School Athlete

Official Publication of the
Kentucky High School Athletic Association

VOL. LII, NO. 1

AUGUST, 1990

\$10.00 PER YEAR

NEWS RELEASE

COMMITMENT NEEDED TO REDUCE SERIOUS FOOTBALL INJURIES

Dick Schindler, Asst. Dir.



First, the good news.

A number of specific measures, including rules changes in the mid 1970's that made spearing, butt blocking and face tackling illegal, have reduced the fatality level in high school football to record low number the past few years.

Other contributing factors that have reduced the fatality rate are coaches teaching blocking and tackling techniques that do not use the helmet as primary contact, improvement in the helmet's protective capabilities thanks to the NOCSAE standard, and an ongoing educational effort to make players aware of the danger and risk of injury.

And now the bad news.

In spite of the reductions in direct fatalities, there has been a steady increase the past three seasons in the number of spinal-cord injuries causing permanent paralysis.

A total of eleven such injuries occurred during the 1989 season which translates into an incidence of .73 per 100,000 participants. A majority of these devastating injuries occurred during games and to defensive players who lowered their heads while tackling an opponent. In addition to permanent disability injuries, there also were a dozen or more serious injuries to the spinal cord that did not result in paralysis.

WHAT'S GOING ON? Can this really be true in 1990 in spite of the progress made in the past 20 years? Coach, have you individually done something each day to try and reduce the numbers? The undeniable fact remains that too many players are suffering irreparable spinal-cord injuries every year.

Even though coaches indicate they teach players to tackle with the head up, some players are still lowering their heads before making contact. It's possible a player made contact accidentally with his "head down" only once - when he was seriously injured; but realistically, it likely happened on other occasions too. When it did, the player was either unaware of the danger of what he was doing, or his coaches failed to make this an issue or the officials failed to identify helmet-first contact as a foul. The number of spinal-cord injuries which occur each year makes it crystal clear that efforts to reduce must be an every day, every year commitment by all involved in the game.

Since coaches communicate with the players on a daily basis, they obviously have the best opportunity to make a positive impact. The coach must have a plan of action for player safety and make sure it is followed. The plan must include making players aware of the risk of death and/or permanent disability, as well as constant monitoring of individual blocking and tackling techniques. Unsafe and/or illegal techniques simply cannot be taught or condoned. Players must be reminded constantly and drilled in the proper execution of these fundamentals so the head will be kept up and out of contact.

Keeping the head up and out of contact does not make the game any less physical. The increased size, strength, speed, and aggressive nature of today's players creates some unbelievable contact situations in every game. Using safe and legal blocking and tackling techniques will still produce a winning team. Keeping the head out of contact does not make it a "sissy game" and it still provides for all the contact even the most physical and aggressive player could ever want. However, the coach must personally support these rules and only teach techniques which keep the head out of contact. The helmet is designed to passively protect the head. The helmet was never designed or intended to be used to deliver a

blow in primary contact or to abuse or punish an opponent.

Obviously, there are many situations where a player's helmet makes incidental contact with an opponent without significant risk of injury to either player. However, a coach must promptly identify and reprimand or discipline players who use illegal or unsafe techniques. If a player is not confronted, it sends the message that the technique is OK. Too often, illegal helmet contact is described as a "great hit" or "way to stick him." Instead of condoning or praising such contact, the exact opposite response from the coach is needed if progress is to be made in reducing spinal cord and other serious injuries.

Nothing in the game has the devastating effect on a program as a fatality or catastrophic injury. There isn't a coach in the profession who wouldn't rather prevent such an occurrence than deal with it after it happens. We have all read statements from coaches who regrettably have gone through the experience of a player's death or catastrophic injury. The unfortunate coach invariably speculates on what the coaching staff might have done or done differently and what they plan to do in the future to minimize the changes of another occurrence. A serious injury can occur in spite of what anybody can do, but nothing less than a maximum effort to reduce the numbers is acceptable. The old adage "An ounce of prevention is worth a pound of cure" is certainly applicable.

While coaches have the major responsibility in this area, they are not alone in fighting the battle. Football officials must also make it a priority to identify and penalize illegal helmet contact. Perhaps officials have been taught to concentrate so much on possession, forward progress, fumbles, out-of-bounds, and other activities that they have failed to really observe helmet contact. Observing helmet contact as it relates to legal and safe play must become a priority for officials - especially in open-field contact and all tackling situations. The foul call not only carries the penalty, but it also directs attention to the player who used an illegal and often dangerous technique. The identification gives the coach the perfect opportunity to admonish or discipline the offending player.

An official has no greater responsibility on the field than the safety of the players. Supervisors of officials via training programs need to stress this item above all other considerations. In addition to illegal helmet contact, the penalizing of unnecessary roughness, piling on, out-of-bounds contact, etc., must become automatic, regardless of those who feel such contact "is part of the game."

KEEP THE HEAD OUT OF THE GAME. KEEP THE HEAD UP. DON'T USE THE HELMET TO MAKE PRIMARY CONTACT. DON'T USE THE HELMET TO PUNISH OR ABUSE AN OPPONENT. This must be the commitment, the goal and the No. 1 priority of all involved in the game - from the players, parents and coaches to the rules makers, athletic directors, school administrators and game officials. It would be tremendous if we had a football season without a fatality or catastrophic injury resulting from contact.

AUGUST, 1990**VOL. LII, NO. 1**

Published monthly, except June and July, by the Kentucky High School Athletic Association, Office of Publication, 560 E. Cooper Dr., P.O. Box 22280, Lexington, KY 40522.

Third class postage paid at Richmond, Kentucky. Acceptance for mailing at special rate of postage provided for in Section 1103. Act of October 3, 1917, authorized May 3, 1926. Publication No. 293080.

Please send notice of undelivered copies on form 3579 to: K.H.S.A.A., P.O. Box 22280, Lexington, Kentucky 40522.

Editor **TOM MILLS**
 Assistant Editor **ANNE WESLEY MAYS**
 Assistant Editor **BRIGID L. DeVRIES**
 Assistant Editor **LOUIS STOUT**
 Assistant Editor **BILLY V. WISE**
 Assistant Editor **JULIAN TACKETT**
 Lexington, Kentucky

BOARD OF CONTROL

President - David Points (1988-1991) Mt. Sterling; Vice-President - Alvis Johnson (1989-1993) Harrodsburg; Directors - Sandy Allen (1988-1992) Louisville, Huston DeHaven (1987-1991) Harrodsburg, Harry Jansing (1990-1994) Louisville, Marvin Moore (1988-1992) Morehead, Jack Portwood (1989-1993) Stanford, Bob Rogers (1989-1993) Murray, Eddie Saylor (1989-1992) Molus, Ray Story (1990-1994) Vine Grove; Liz Trabandt (1988-1991) Ashland; State Department of Education - Harry Loy, Frankfort.

Subscription Rate \$10.00 per year

COACHES CHECKLIST — MEMORY JOGGERS

1. Keep the head up
2. Discuss risk of injury
3. Keep the head out of contact
4. Explain how serious injuries occur
5. Involve parents in early season meeting
6. Have a set plan for coaching safety
7. Clearly explain and demonstrate safe techniques
8. Provide best medical care possible
9. Monitor blocking and tackling techniques every day
10. Repeat drills which stress proper and safe techniques
11. Admonish and/or discipline users of unsafe techniques
12. Receive clearance by doctor for athlete to play following head trauma
13. Stress safety every day
14. Don't glorify "head hunters"
15. Support officials who penalize illegal helmet contact
16. Don't praise or condone illegal helmet contact
17. Provide conditioning to strengthen neck muscles
18. Entire staff must be "tuned in" to safety program
19. Check helmet condition regularly
20. Improper technique causes spinal-cord injuries
21. Helmet must fit properly
22. Be prepared for a catastrophic injury
23. The game doesn't need abusive contact
24. Player safety is your responsibility
25. It's a game - not a job for the players

MAKE SAFETY A COMMITMENT AND YOUR #1 PRIORITY!

— CONGRATULATIONS!! —**1989-90 Championship
Teams & Coaches**

VOLLEYBALL Notre Dame Kim Gunning

CROSS COUNTRY

A Girls	St. Henry	Ray Kues
AA Girls	Warren East	Rob Bowers
AAA Girls	Notre Dame	Bob Meyer
A Boys	Cordia	Elmer Combs
AA Boys	Fort Campbell	Lee Lange
AAA Boys	Shelby County	Larry Wingfield

SOCCER

Ballard Dave Fernandez

FOOTBALL

A	Pikeville	Hillard Howard
AA	Danville	Sam Harp
AAA	Highlands	Tom Duffy
AAAA	Trinity (Louisville)	Dennis Lampley

WRESTLING

Campbell County Mike Bankemper

SWIMMING

Boys	St. Xavier	Marty O'Toole
Girls	Henry Clay	Bob Young

BASKETBALL

Boys	Fairdale	Stan Hardin
Girls	Henry Clay	Robert Tripure
Hall of Fame Classic	Pleasure Ridge Park	Dale Mabrey

GOLF

Girls	North Hardin	Roger Cook
Boys	Trinity (Louisville)	John Kahl

BASEBALL

Paintsville Charles Adkins

SOFTBALL

Christian County Jim Perrin

TENNIS

Girls Singles	Sacred Heart	Bunny Daugherty
Girls Doubles	Sacred Heart	Bunny Daugherty
Boys Singles	Dixie Heights	Tom Wischer
Boys Doubles	St. Xavier	Joe Kroh

TRACK

A Girls	Todd County Central	Jimmy Champman
A Boys	Danville	E.G. Plummer
AA Girls	Fort Campbell	Chuck Burgett
AA Boys	Fort Campbell	Steven Clouse
AAA Girls	Ballard	Marcia Cole
AAA Boys	Eastern	Judy Simpson

SPECIAL NOTICE**PART II EXAMS FOR FOOTBALL, SOCCER
AND VOLLEYBALL — SEPTEMBER 10**

The Part II examination must be taken under supervision. It will be given by the local assigning secretary and/or at the K.H.S.A.A. Office in Lexington, or other sites as designated by the K.H.S.A.A. Any exception to the above must be cleared with the Commissioner.

**NEWS
RELEASE**

**KENTUCKY ASSOCIATION
OF
PEP ORGANIZATION SPONSORS**



The Kentucky Association of Pep Organization Sponsors (KAPOS) is pleased to recognize eleven 1990 Stella S. Gilb Scholarship winners. Robyn Allen, Warren County H.S.; Lanessa Arnett, Magoffin County H.S.; Terri Beamer, Bullitt Central H.S.; Tammy Cobb, Graham H.S.; Lynda Mullins, Johnson Central H.S.; Mary Beth Murley, Cumberland County H.S.; Mallory Sandefur, Ohio County H.S.; Kari Short, Reidland H.S.; Lynda Thompson, Todd Central H.S.; Trenda Wilcox, Bremen H.S.; and Angela Wright, Holy Rosary H.S. Each recipient was chosen for academic and leadership ability and will receive \$500. Since 1964, KAPOS has awarded 65 scholarships in the amount of \$48,600. Applications for the 1991 scholarships will be available in January. Any cheerleader at a KAPOS member school is eligible.



**Robyn Allen
Warren Central
High School**



**Lanessa Arnett
Magoffin County
High School**



**Terri Beamer
Bullitt Central
High School**



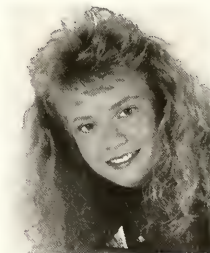
**Tammy Cobb
Graham High School**



**Linda Mullins
Johnson Central
High School**



**Mary Beth Murley
Cumberland County
High School**



**Mallory Sandefur
Ohio County
High School**



**Kari Short
Reidland High School**



**Lynda Thompson
Todd Central
High School**

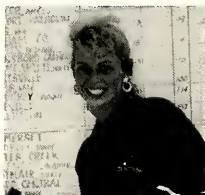


**Trenda Wilcox
Bremen High School**



**Angela Wright
Holy Rosary
High School**

1989-1990 GIRLS' GOLF CHAMPIONS
ELIZABETHTOWN COUNTRY CLUB, ELIZABETHTOWN
May 30-31, 1990



Individual Winner
 Karla Hopper, Madison Central - 156



TEAM CHAMPION - NORTH HARDIN HIGH SCHOOL

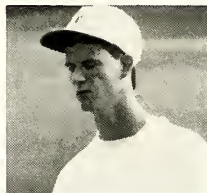
INDIVIDUAL SCORES

Tressa Carlisle, North Hardin . . .	163	Sandy Stokley, Somerset	168	Alish Warren, East Hardin	173
Jamie Tower, Trigg County	165	Lin Valera, Paintsville	169	Sarah Posey, Casey County	175
Tracy Hughes, Casey County	165	Tanya Cecil, North Hardin	171	Crystal Canada, East Hardin	175
Jill Smiley, Mad.-N. Hopkins	165	Aimee Cantrell, Johnson Cen.	172	Kate Hitchcock, Sacred Heart	180

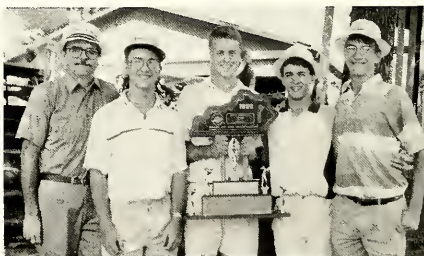
TEAM SCORES

North Hardin	695	Assumption	828	Corbin	895
Casey County	707	Johnson Central	816	Woodford County	900
Mad.-N. Hopkins	798	Sacred Heart	849	Bowling Green	940
Franklin County	798	Rowan County	850	Carroll County	948
Glasgow	802	Owen County	854		
Murray	814	Taylor County	876		

1989-1990 BOYS' GOLF CHAMPIONS
LINCOLN TRAIL COUNTRY CLUB, VINE GROVE
May 30-31, 1990



Individual Winner
 Darren Hillis, Mayfield - 150



TEAM CHAMPION - TRINITY HIGH SCHOOL

INDIVIDUAL SCORES

Kent Diehlman, Trinity	151	Pat Vadden, St. Xavier	154	Kelvin Burgin, Somerset	156
Chris Bell, Paducah Tilghman	151	Chad Dawson, Franklin Cty.	155	Brad Lehman, Trinity	156
Daniel Utley, Bates Creek	151	Denny Pelle, Campbell County	155	Johnny Cain, Somerset	156
Steve Honchell, Estill County	152	David Rice, Trinity	155	Jeb Zoller, Bowling Green	156
Mark Lalonde, Bates Creek	152	David Burns, Trinity	156	Matt Wallace, Mayfield	156

TEAM SCORES

Trinity	618	Daviess County	667	DeSales	694
St. Xavier	637	Russell	669	Allen County	694
Mayfield	640	Rowan County	674	Mason County	700
Somerset	648	Madisonville	679	Boone County	703
Franklin County	649	Graves County	681	St. Patrick	707
Covington Catholic	651	Danville	685	Elizabethtown	729
Casey County	660	Bowling Green	689		
Estill County	661	Scott County	690		



VOLLEYBALL COMMITTEE MINUTES

June 7, 1990

The Volleyball Committee met at the Kentucky High School Athletic Association Office in Lexington, Kentucky, on Thursday, June 7, 1990. The meeting was called to order at 10:30 a.m. by Brigid L. DeVries, Assistant Commissioner. Committee members present included Margi McKenna, Joan Mitchell, Sally Meng, John Bancroft, John Smith, Ron Kordes, Steve Williams, and Jack Pylinski.

The first item on the agenda was the site for the 1990 State Volleyball Tournament. The University of Kentucky Head Volleyball Coach Kathy DeBoer and her assistant Mary Wise presented a proposal to host the 1990 state tournament at Memorial Coliseum. Following the presentation, the committee reviewed a proposal submitted by Mr. Tom Zimmerman from the Commonwealth Convention Center in Louisville, requesting to host the 1991 tournament. John Smith reported about the formation of a new group in Louisville called the Friends of Volleyball. This group is interested in promoting Volleyball events such as the high school state tournament in the Louisville area. Ms. DeVries will meet with the Friends group regarding the 1991 tournament at Commonwealth Convention Center in the near future. The committee was generally in favor of the Commonwealth Convention Center as a possible site for the 1991 tournament, if all of the necessary details can be worked out.

The next item on the agenda was a discussion of Regional tournaments and sites. Ms. DeVries advised the Committee of a few possible additions to the teams in each region. The 1990 Regional sites were discussed and committee members will check their availability for the 1990 tournaments. Regional tournament will be double elimination again this year. The Committee then discussed the items on the Regional and State Information Sheet and made some corrections for the coming year.

John Bancroft made a motion, seconded by Steve Williams, that the teams change benches for the 1990 season including regional and state tournament play. The motion carried unanimously.

The next item on the agenda was the officials fees. There will be an increase in fees effective for the 1990-91 school year. Umpires and referees will receive \$22.50 per match for regular season varsity play. Regional tournament fees will be \$25.00 and State Tournament fees are \$30.00 per match plus a travel expense.

Ms. DeVries announced the tentative times and sites for the Clinics. They are as follows:

Tuesday, Aug. 14, Iroquois H.S., Louisville 7:30 p.m.
 Thursday, Aug. 16, Dixie Heights H.S., Ft. Mitchell 7:30 p.m.
 Tuesday, Aug. 21, Sportsworld, Lexington 7:30 p.m.

A brief discussion followed regarding the 1990-91 National Federation Volleyball rules. The most significant change was in rule 3-1-6 which stipulates that net antennas be attached directly above the outside edge of the vertical tape markers.

The next topic was the Limitation of Seasons, the first match shall not take place before the fourth Monday in August. This is a new change effective for the 1990 season. The old deadline for play to begin was September 1.

The committee members reviewed the current Constitution and By-Laws Volleyball section but made no changes.

Ron Kordes presented a brief report on the Mizuno All Star match scheduled in Louisville this coming July. The players are graduating seniors who have completed their high school eligibility. There will be a clinic for high school coaches the afternoon of the tournament. People wanting further information regarding the match can contact Ron Kordes, at

Assumption High School.

John Bancroft encouraged everyone to get involved in the Blue Grass State Games the last weekend in July. There is a Junior Division open to high school junior players.

It was suggested that the State All Tournament Team Committee be expanded to include two officials, media representatives and three at large voters, in addition to the coaches from the participating teams. The committee approved the suggestion unanimously.

Ms. DeVries invited committee members to contribute to the Volleyball newsletter *Sideout*.

The committee discussed a statewide fee modification schedule for use in tournaments where 11 point games were played. After much consideration on this topic it was felt that those policies could be established by local policy boards in Louisville and Northern Kentucky.

There being no further business, the meeting was adjourned.



1990 State Tennis Championships Team Scoring

BOYS

1 St. Xavier	13	14 Apollo	2
2 Trinity (Louisville)	11	Boone County	2
3 Dixie Heights	8	Christian County	2
4 Franklin County	7	Cumberland	2
Henderson County	7	George Rogers	
6 St. Francis	5	Clark	2
Ky. Country Day	5	Scott County	2
Lone Oak	5	Scott	2
9 Owensboro Cath	4	Tates Creek	2
Elizabethtown	4	22 Bell County	1
11 Bowling Green	3	Mad. Southern	1
Russell	3	Middlesboro	1
Sayre	3	S.W. Christian	1

GIRLS

1 Sacred Heart	17	Franklin Simpson	2
2 Lone Oak	8	Grayson County	2
3 Henry Clay	7	Henderson County	2
Sayre	7	Louisville Collegiate	2
5 Russell	6	Notre Dame	2
6 Apollo	4	Owensboro	2
Assumption	4	Mercy	2
Beechwood	4	St. Camillus	2
Highlands	4	St. Patrick	2
Male	4	Taylor County	2
11 Waggener	3	Washington Cty.	2
Model	3	26 Boyd County	1
13 Bullitt Central	2	Atherton	1
Central City	2	Morgan County	1

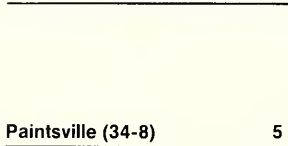
1989-90 K.H.S.A.A. BASEBALL TOURNAMENT
Lexington, Kentucky
June 7-8, 1990

PAINTSVILLE HIGH SCHOOL

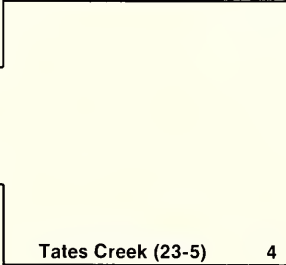


Head Coach Charles Adkins, Asst. Coach Bill Mike Runyon, Mickey Van Hoose, Tucker Howard, Jeremy Holbrook, Walt Crace, Greg Slone, Todd Porter, Billy Phelps, Rocky Blankenship, Matt Williams, Mike Eldridge, Scott Fairchild, Joe Collins, Sean Williams, Hatler Riddle, Marty Preston, Mike Peters, Kevin Clay, Ashley Blanton, Jon Holbrook, Brent Hamilton.

Pleasure Ridge Park (32-8) 0

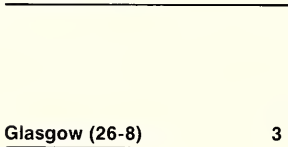


Paintsville (35-8) 10



Paintsville (34-8)

Tates Creek (22-5) 11



Tates Creek (23-5) 4

Glasgow (26-8) 3

Paintsville

Tournament Officials

- Tracy T. Arflin, II
- Jim Dwyer
- Hager Easterling
- Steve Finch
- William S. Heaberlin
- Joseph C. Ponchot
- John Smart
- David A. White

TENTATIVE 1990-91 CLINIC SCHEDULE

Schools and officials are reminded of the Clinic Attendance Requirement for Officials in Football, Soccer, Volleyball, Basketball, Wrestling, Baseball and Track. If any date changes from that listed herein, each official and school will be notified.

Football

(all clinics begin at 7:30 P.M.)

- 7/30 Barbourville, Knox Central
- 7/31 Hazard, Hazard H.S.
- 8/1 Pikeville, Pikeville H.S.
- 8/2 Ashland, Kentucky Power Plant
- 8/6 Elizabethtown, Elizabethtown H.S.
- 8/7 Henderson, Henderson H.S.
- 8/8 Mayfield, Mayfield H.S.
- 8/9 Hopkinsville, Hopkinsville H.S.
- 8/13 Bowling Green, Bowling Green H.S.
- 8/14 Louisville, Durrett Education Center
- 8/15 Northern Kentucky University
- 8/16 Lexington, Henry Clay

Soccer

- 8/11 Madisonville, Madisonville H.S. 11:00 A.M.
- 8/13 Louisville, Trinity H.S., 7:00 P.M.
- 8/14 Elizabethtown, Elizabethtown H.S.
- 8/15 Covington, Holmes, 7:00 P.M.
- 8/16 Lexington, Lafayette, 7:00 P.M.
- 8/17 Morehead, Rowan County H.S., 7:00 P.M.

Volleyball

- 8/14 Louisville, Iroquois H.S., 7:30 P.M.
- 8/16 Fort Mitchell, Dixie Heights H.S., 7:30 P.M.
- 8/21 Lexington, Sportsworld, 7:30 P.M.

Basketball

(all clinics begin at 7:00 p.m.)

- 10/3 Hazard, Dilce Combs H.S.
- 10/4 Prestonsburg, Prestonsburg H.S.

- 10/3 Hazard, Dilce Combs H.S.
- 10/4 Prestonsburg, Prestonsburg H.S.
- 10/8 Morehead, Rowan County H.S.
- 10/9 Ashland, Ashland Community College
- 10/10 Maysville, Mason County H.S.
- 10/11 Northern Kentucky University
- 10/15 Owensboro, Apollo H.S.
- 10/16 Mayfield, Graves County H.S.
- 10/17 Hopkinsville, Hopkinsville H.S.
- 10/18 Bowling Green, Bowling Green H.S.
- 10/22 New Castle, Henry County H.S.
- 10/23 Elizabethtown, Elizabethtown H.S.
- 10/24 Louisville, Durrett Education Center
- 10/25 Lexington, Henry Clay H.S.
- 10/29 Somerset, Somerset H.S.
- 10/30 Pineville, Bell County H.S.

Wrestling

- 10/27 Hopkinsville, Christian County, 1:00 P.M.
- 11/3 Northern Kentucky, Conner, 1:00 P.M.
- 11/10 Frankfort, 1:00 P.M.
- 11/20 Louisville, KY School f/t Blind, 7:00 P.M.

Softball and Baseball

- 2/4 Lexington, Henry Clay H.S., 6:00 P.M.
- 2/5 Covington, Holmes H.S., 6:00 P.M.
- 2/6 Ashland, Paul Blazer H.S., 6:00 P.M.
- 2/7 Pikeville, Pikeville H.S., 6:00 P.M.
- 2/11 London, Laurel County H.S., 6:00 P.M.
- 2/12 Bowling Green, Bowling Green H.S., 6:00 P.M.
- 2/13 Hopkinsville, U.K. Comm. College, 6:00 P.M.
- 2/14 Louisville, Atherton H.S., 6:00 P.M.
- 2/18 Maysville, Mason County H.S., 7:00 P.M.

Track

The track clinic schedule has not been finalized. Attempts are being made to incorporate additional clinic sites into the schedule. When the final schedule is available, all registered officials and participating schools will be notified.

SPECIAL NOTICE TO MEMBER SCHOOLS CONCERNING THE TRANSFER RULE

Several times already during this young school year, member schools have submitted transfer requests on the day of the contest. We will try and accommodate these requests when possible. However, one recent change in the By-Laws has apparently escaped the attention of many coaches. A student athlete may not practice or play with a team until ruled eligible by the Commissioner. In football, this means it is not possible for a player to become eligible and play on the same day because he/she would not ten (10) days of practice in pads.

REMINDER TO SCHOOLS CONCERNING LIMITATION OF SEASONS

All schools are reminded of the Limitation of Seasons Rules, K.H.S.A.A. By-Law 27, as it applies to competition after the conclusion of the regular season. ALL SPORTS are affected by this rule, which states that following the teams' last regular season match, there shall be no further practice or play as a team for the remainder of the school year, with the exception of the K.H.S.A.A. tournament. Please be sure your coaches are aware of this important rule, and that they are not involved in coaching the team in an outside league, or other competition. For the high school coach, be they the Head Coach or an assistant coach, to coach members of the high school team in a league outside of the school's legal regular season competition, regardless of the type of league, would be a violation of the rules governing the Limitation of Seasons.

OPEN DATES SOLICITED FOR FOOTBALL SCHOOLS

Please submit your open football dates to the K.H.S.A.A. office so that we may again compile a list to assist you in scheduling. Please submit these open dates in writing and include 1) the game date desired, and 2) a contact name and daytime phone number. This is especially important as we begin scheduling for next year with the alignment changes. Football Schools Open Date Listing - August 10, 1990

- August 17** -- Adair County, Allen County-Scottsville, Ballard Memorial, Bardstown, Beechwood, Bellevue, Boone County, Bourbon County, Bowling Green, Boyle County, Breckinridge County, Bullitt Central, Bullitt East, Caldwell County, Calloway County, Campbell County, Campbellsville, Christian County, Conner, Covington Catholic, Daviess County, DeSales, Dixie Heights, Elizabethtown, Fort Campbell, Fort Knox, Frankfort, Franklin County, Franklin-Simpson, Fulton City, Fulton County, Garrard County, George Rogers Clark, Graves County, Grayson County, Green County, Greenup County, Hancock County, Harrodsburg, Hart County, Heath, Henderson County, Henry County, Holmes, Hopkinsville, Jessamine County, Johns Creek, Kentucky Country Day, Kentucky School f/t Deaf, Lewis County, Lincoln County, Lloyd Memorial, Logan County, Madisonville-North Hopkins, McLean County, Meade County, Mercer County, Metcalfe County, Millersburg Military Institute, Monroe County, Murray, Nelson County, Newport, North Bullitt, Oldham County, Owen County, Owensboro, Paducah Tilghman, Paris, Paul Dunbar, Phelps, Pikeville, Pineville, Prestonsburg, Rowan County, Russell County, Scott County, Shelby County, Simon Kenton, South Oldham, Todd County Central, Trigg County, Union County, Warren East, Washington County, Webster County, Western Hills
- August 24** -- Anderson County, Campbellsville, Clay County, Cumberland, Harrodsburg, Kentucky Country Day, Kentucky School f/t Deaf, Knox Central, Larue County, Lawrence County, Mason County, Mercer County, Newport Central Catholic, Paul Dunbar
- August 31** -- Barren County, Corbin, Frankfort, Henry Clay, Jenkins, Kentucky School f/t Deaf, Lafayette, Lynn Camp, Warren Central, Webster County
- September 07** -- Bell County, Cawood, Frankfort, Fulton City, Knott County Central, Millersburg Military Institute, Sheldon Clark, Taylor County
- September 14** -- Betsy Layne, Boone County, Campbellsville, Estill County, Murray, Nicholas County, North Hardin, Woodford County
- September 21** -- Danville, Green County, Henderson County, Kentucky School f/t Deaf, Paul Dunbar, Reidland, Russellville
- September 28** -- Boone County, Casey County, Central Hardin, Crittenden County, Eminence, Greenwood, Johnson Central, Kentucky School f/t Deaf, Madison Southern, Magoffin County, Paintsville, Pineville, Washington County, Whitley County, Williamsburg
- October 05** -- Allen Central, Bath County, Belfry, Breathitt County, Breckinridge County, Caverna, Hancock County, Harrison County, Magoffin County, Mayfield, Ohio County, Paris, Rockcastle County, Russell County, Shelby Valley, Somerset, Webster County, Wheelwright
- October 12** -- Apollo, Cumberland, East Carter, Elkhorn City, Harlan, Hazard, Larue County, McCreary Central, Millersburg Military Institute, Phelps, Wayne County, Whitesburg
- October 19** -- Casey County, Fulton City, Garrard County, Logan County, Magoffin County, Morgan County, Murray, Pulaski County, South Hopkins
- October 26** -- Bullitt East, Campbell County, Kentucky School f/t Deaf, Larue County, Marshall County, Paul Dunbar
- November 02** -- Adair County, Ballard Memorial, Bath County, Bowling Green, Boyd County, Bryan Station, Butler County, Campbellsville, Carroll County, Casey County, Caverna, Corbin, Crittenden County, Dayton, Edmonson County, Eminence, Evarts, Fairview, Fleming County, Fleming-Neon, Fort Campbell, George Rogers Clark, Glasgow, Green County, Harlan, Harrodsburg, Hazard, Henry Clay, Henry County, Highlands, Johns Creek, Laurel County, Leslie County, Lone Oak, Ludlow, M.C. Napier, Madison Central, Madisonville-North Hopkins, Magoffin County, Marion County, Mason County, Metcalfe County, Middlesboro, Millersburg Military Institute, Monroe County, Montgomery County, Muhlenberg South, Owensboro Catholic, Paintsville, Paul Blazer, Phelps, Pikeville, Raceland, Russell, Russellville, Scott, Shelby County, Somerset, Tates Creek, Todd County Central, Union County, West Carter
- Providence (IN)** - September 13, 1991 approximately 515 students, contact Bob Fields, A.D., (812)945-2538.
- Ironton (OH)** - October 4, 1991, October 2, 1992, and October 30, 1992, contact Mike Burcham, A.D., (614)532-5235.

S.A.T. TEST DATES FOR 1990-91

The S.A.T. test schedule for the near future is as follows:

TEST DATE	REG. DEADLINE
11/03/90	09/28/90
12/1/90	10/26/90
01/26/91	12/21/90
03/16/91	02/08/91
05/04/91	03/29/91
06/1/91	04/26/91

Athletic Directors and school officials should pay special attention to these dates and encourage your athletes to schedule their test dates away from potential conflicts with district, regional or state athletic events.

OPEN DATES FOR BASKETBALL SCHOOLS

Please submit your open basketball dates to the K.H.S.A.A. office so that we may again compile a list to assist you in scheduling. Please submit these open dates in writing and include 1) the game date desired, and 2) a contact name and daytime phone number. The following games have been requested --

Christian County Boys, November 30, December 11, December 18, and December 21, 1990, and January 29 and February 21, 1991, Contact Lyle Dunbar, (502)887-1116;

Fort Campbell Boys, January 18, January 29 and February 15, 1991, Contact Mickey Fischer, (615)431-5056;

George Rogers Clark Boys, December 21, January 4, January 18, February 5. Contact Coach Ken Trivette, (606)432-2636, or (606)278-6975;

Harrodsburg Boys, needs a team in the McDonalds' Classic, December 6-8. Contact Alvis Johnson, (606)734-7118, or Greg Edwards, (606)734-9089;

Madison Central Boys, January 4, January 11, and January 18, 1991, Contact Ken Roberts (606)623-1530, or (606)623-6072;

Mater Dei (Breese, IL), December 26-29, a sixteen team, double elimination tournament for boys' teams, needs two teams, contact Dennis Trame or Curt Winter (618)526-7216;

Maysville, January 18, Contact Steve Appleman, (606)564-5456, or (606)564-9210.;

Oldham County Boys, December 14, 1990, January 15, February 8, and February 19, contact Tom Peterson, A.D., (502)222-9461;

Russell Girls, January 10 and January 14, 1991, contact Jerry Klaiber, A.D., (606)836-0369; Russell is also interested in playing in a holiday tournament, contact Mr. Klaiber for details;

Scott Boys (Covington), November 26, 1990 needs a team for a Tip Off Tournament. Other dates available, contact Ken Mueller, (606)356-3146 or (606)525-0795.

A.C.T. TEST DATES FOR 1990-92

The A.C.T. test schedule for the near future is as follows:

TEST DATE	REG. DEADLINE	LATE DEADLINE
10/27/90	09/28/90	10/15/90
12/8/90	11/9/90	11/26/90
02/9/91	01/11/91	01/28/91
04/13/91	03/15/91	04/1/91
06/8/91	05/10/91	05/24/91
10/26/91	09/27/91	10/11/91
12/14/91	11/15/91	12/2/91
02/8/92	01/10/92	01/27/92
04/11/92	03/13/92	03/30/92
06/13/92	05/15/92	06/01/92

Athletic Directors and school officials should pay special attention to these dates and encourage to schedule their test dates away from potential conflicts with district, regional or state athletic events.

IMPORTANT NOTICE CONCERNING DISQUALIFICATIONS

By Board of Control action, all participants and/or coaches who are ejected from a contest for unsportsmanlike conduct shall be suspended from competition for a minimum of one game.

It also should be noted that officials who disqualify participants, and then do not report that disqualification to the Association office in a timely manner may face suspension from officiating!!

With this in mind, it is important to adhere to the following procedure should a representative of your school be ejected for unsportsmanlike conduct. 1) Be sure you receive a disqualification card from the contest official; 2) Contact this office in writing to request reinstatement of the participant; 3) Inform the participant/coach of the suspension. You will be notified by return mail as to the end of the suspension, and the date or day when the player/coach will be eligible to return to competition. Contest officials also are reminded to use an ink pen, to include the first and last name of the offender, and to press hard as the third copy is often illegible if done in pencil.

NOTE Any person who is suspended from a contest may not dress for that contest in game uniform. They will however be covered by the catastrophic insurance policy insofar as practice is concerned unless you are otherwise notified.

CHANGE IN ACT SCORING SHOULD BE NOTED BY COUNSELORS

From the NCAA, this is intended to serve as an addendum to the Guide to College Freshman Eligibility Requirements for Division I and II Institutions. One component of these initial eligibility requirements is the requirement that a prospect must achieve a minimum score on the ACT or SAT. Please note that because the ACT has developed a new format and score scale for the test, the minimum required score (for purposes of initial eligibility) for ACT tests administered subsequent to October 1, 1989 is 18 rather than 15. This is because, according to concordance tables published and distributed by the ACT agency, the concordant value of the previously required composite score of 15 is 18. Please note that this does not represent an increase in the required ACT score, but only recognizes the fact that a score of 18 on the new test is equivalent to a score of 15 on the previous test.

AMY DODRILL SELECTED DREAMER AND DOER

Amy Dodrill of Prospect was named Kentucky's Dreamer and Doer following a meeting of the State Selection Committee in Lexington on May 10. Chris Manus of Williamsburg was named runner-up. Walt Disney World National Dreamers and Doers is a student recognition program co-sponsored by the National Federation of State High School Associations and administered in Kentucky by the K.H.S.A.A.

Students are honored for their participation in interscholastic activity programs and demonstration of the 4 C's, curiosity, confidence, courage and constancy, which are the cornerstones of the program.

All of the State Dreamer and Doer winners were honored with an expense paid, multi day educational event and award ceremony, August 15-18, at Walt Disney World Resort in Orlando.

KENTUCKY ATHLETIC TRAINERS SOCIETY ANNOUNCES SCHOLARSHIP WINNER

Mr. Brian Ball, a senior at Belfry High School, is the 1990 recipient of the Tom Simmons Athletic Training Scholarship. The scholarship is awarded by the Kentucky Athletic Trainers Society in honor of Tom Simmons, Athletic Trainer Emeritus of Murray State University. Mr. Ball was selected based on his academics, his work as Athletic Training and other related activities. Mr. Ball will be attending the University of Kentucky in the fall, and working in the Athletic Training program.

FOOTBALL CORRESPONDING DATES

Due to the passage of a referendum to shorten the season, the re-negotiation of many contracts due to the 1991 realignment, and the expansion of the playoffs to four teams beginning in 1991, many schools are confused about the possible playing dates for football games. Below is listed the updated corresponding date chart as it will appear in the 1990-91 Handbook.

Also, by virtue of Delegate Assembly action in 1990, no games may be scheduled or played at any level following the Saturday of the week preceding the First Round of the playoffs.

	1990	1991	1992	1993	1994	1995
FINALS	11/30	12/6	12/4	12/3	12/2	12/1
SEMI-FINALS	11/23	11/29	11/27	11/26	11/25	11/24
REGION	11/16	11/22	11/20	11/19	11/18	11/17
SECOND ROUND	11/9	11/15	11/13	11/12	11/11	11/10
FIRST ROUND **	11/2	11/8	11/6	11/5	11/4	11/3
Week 10	10/26	11/1	10/30	10/29	10/28	10/27
Week 9	10/19	10/25	10/23	10/22	10/21	10/20
Week 8	10/12	10/18	10/16	10/15	10/14	10/13
Week 7	10/5	10/11	10/9	10/8	10/7	10/6
Week 6	9/28	10/4	10/2	10/1	9/30	9/29
Week 5	9/21	9/27	9/25	9/24	9/23	9/22
Week 4	9/14	9/20	9/18	9/17	9/16	9/15
Week 3	9/7	9/13	9/11	9/10	9/9	9/8
Week 2	8/31	9/6	9/4	9/3	9/2	9/1
Week 1	8/24	8/30	8/28	8/27	8/26	8/25
**	8/17	(For 1990 season only)				

** Due to passage of a referendum which shortened the football season to ten weeks, there are no regular season playing dates which correspond to August 17 or November 2, 1990. The November 2 date will be lost due to the expansion of the playoffs to include the top four teams in each district. It is important to remember that beginning in 1991, there will be only ten (10) weeks in which to play the legal limit of ten (10) games.

PRINTING / MAILING SCHEDULE

During the next few weeks the following items will be mailed and/or printed by the Association office --

State Tournament Ticket Orders - will be mailed to the general public and to the member schools on or around September 1, 1990;

State Football Playoff Ticket Orders - will be mailed to the general public and to the member schools on or about September 1, 1990;

Handbook - The Association Handbook is currently at the printers/binders. It should be delivered on or around September 1, and will be mailed soon after;

The *Athlete* magazine - goes to press each month on the 15th of the month, and is generally mailed on the last day of the month;

Basketball rules books - will be mailed to the coaches by the Association office around September 15. These will be mailed to the officials by the Federation office around September 15.

WATCH YOUR MAILBOX FOR EXCITING NEWS

Please pay close attention to the mail coming from the office. In the next few days, you will receive information about the most exciting program in the history of the Association as we attempt to raise funds for the building of our new headquarters. The program is inexpensive enough to allow all of the Association constituencies to participate. Please take advantage of this opportunity to not only invest in the future of your Association, but to have your name immortalized forever with this project.

1989-90 K.H.S.A.A. SOFTBALL TOURNAMENT
Owensboro, Kentucky
May 25-26, 1990
CHRISTIAN COUNTY HIGH SCHOOL



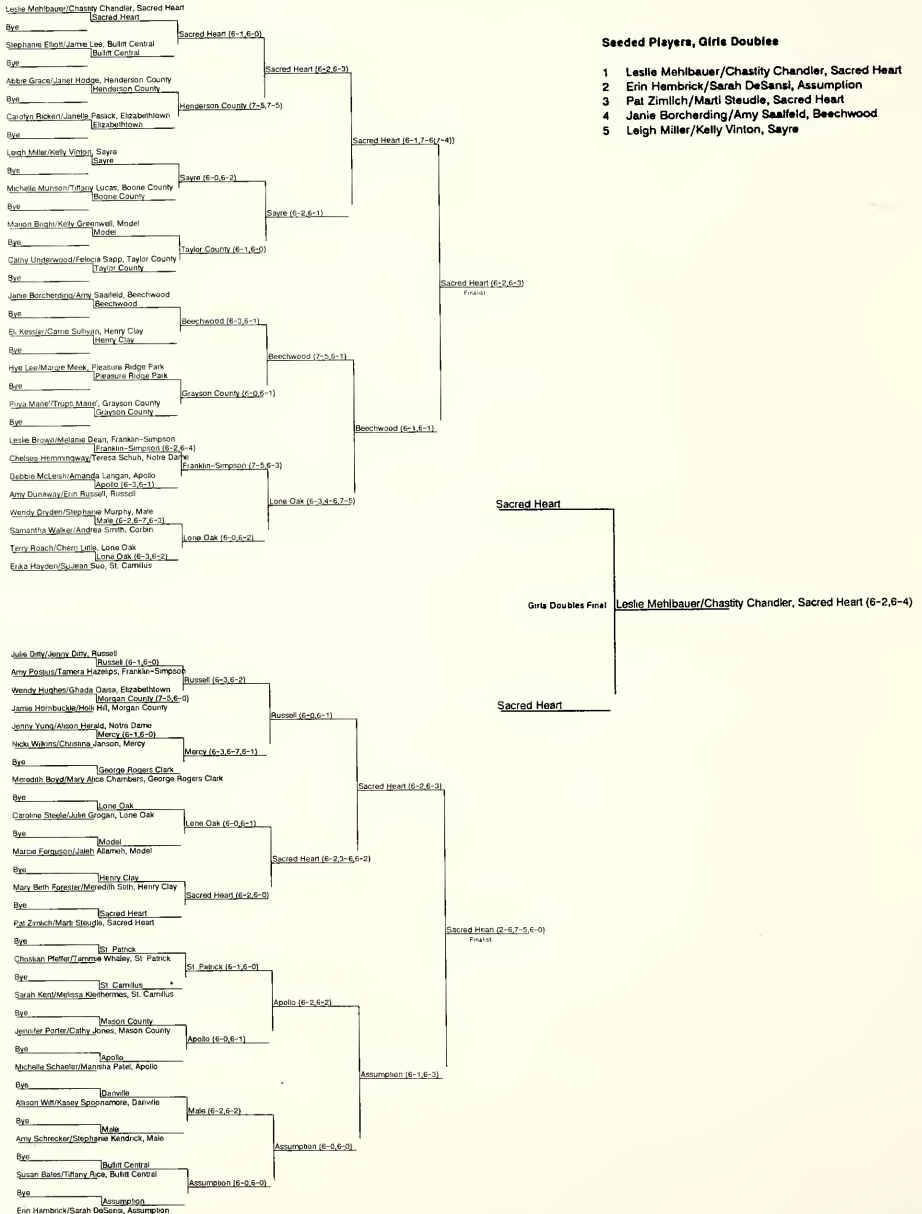
<u>Bye</u>					
	Laurel County	5			
Laurel County					
Bullitt East	0		Mercy	9	
	Mercy	8			
Mercy	4				
Estill County	7		Mercy	6	
	Estill County	1			
Letcher	1		Holy Cross (Louisville)	5	
Holy Cross (Louisville)	13				
	Holy Cross (Louisville)	12			
Warren Central	5				
Greenup County	5				<u>Christian County</u>
	Lone Oak	2			<u>STATE CHAMPION</u>
Lone Oak	7				
Christian County	24		Christian County	6	
	Christian County	13			
Scott	5				
Daviess County	8		Christian County	11	
	Green County	9			
Green County	9				
Newport Central Catholic			Green County	0	
	Newport Central Catholic	4			
<u>Bye</u>					

Tournament Officials	
Billy Bolinger	Ric M. Johnson
Larry Cook	David Mosley
Ronda J. Davis	Bobby W. Pearson
Kent Dillingham	Eldridge Rogers
Morris E. Durbin	Andy Strain
Mark Hicks	Clyde Stikeleather
Linda Howard	Jim Thart
Roy S. Hughes	Bob Welch

1990 K.H.S.A.A. State Tennis Tournament, Girls Doubles

Downing Tennis Center, University of Kentucky

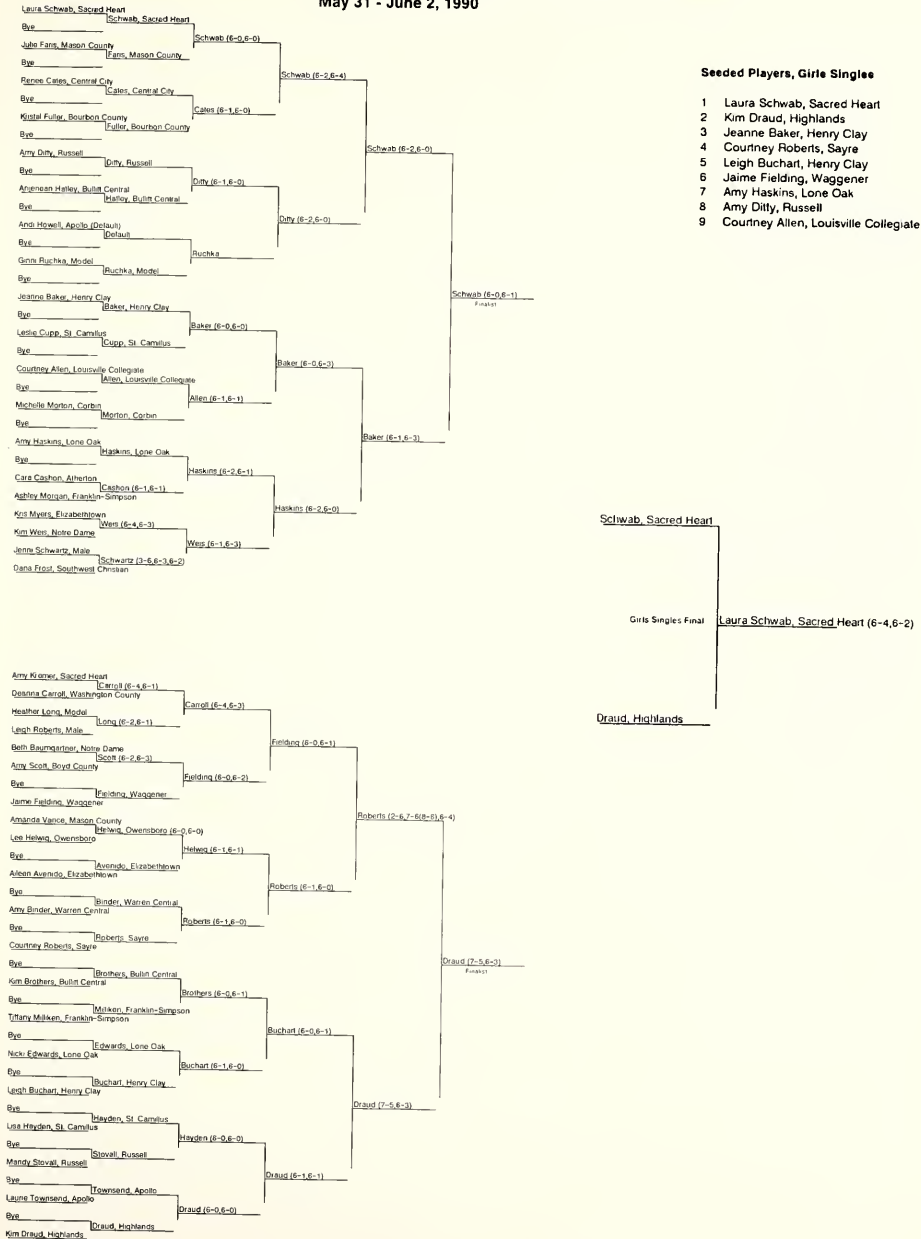
May 31 - June 2, 1990



1990 K.H.S.A.A. State Tennis Tournament, Girls Singles Downing Tennis Center, University of Kentucky May 31 - June 2, 1990

Seeded Players, Girls Singles

- 1 Laura Schwab, Sacred Heart
- 2 Kim Draud, Highlands
- 3 Jeanne Baker, Henry Clay
- 4 Courtney Roberts, Sayre
- 5 Leigh Buchart, Henry Clay
- 6 Jaime Fielding, Waggener
- 7 Amy Haskins, Lone Oak
- 8 Amy Ditty, Russell
- 9 Courtney Allen, Louisville Collegiate



1990 K.H.S.A.A. State Tennis Tournament, Boys Doubles

Downing Tennis Center, University of Kentucky

May 31 - June 2, 1990



Seeded Players, Boys Doubles

- 1 Travis Reque/Chad McRea, Trinity (Louisville)
- 2 Brice Brown/Scott Treibly, St. Xavier
- 3 Scott Creffon/Travis Saacke, Henderson County
- 4 Chris Beard/Bill Wainwright, Franklin County
- 5 Steve Borders/Eric Grogan, Lone Oak
- 6 Adam Bibb/Chad Muntan, St. Xavier
- 7 Shannon Mungle/Nicky Harms, Lone Oak
- 8 Chris Wright/Jeff Blank, Scott
- 9 Miller Brice/Kevin Douglas, Kentucky Country Day



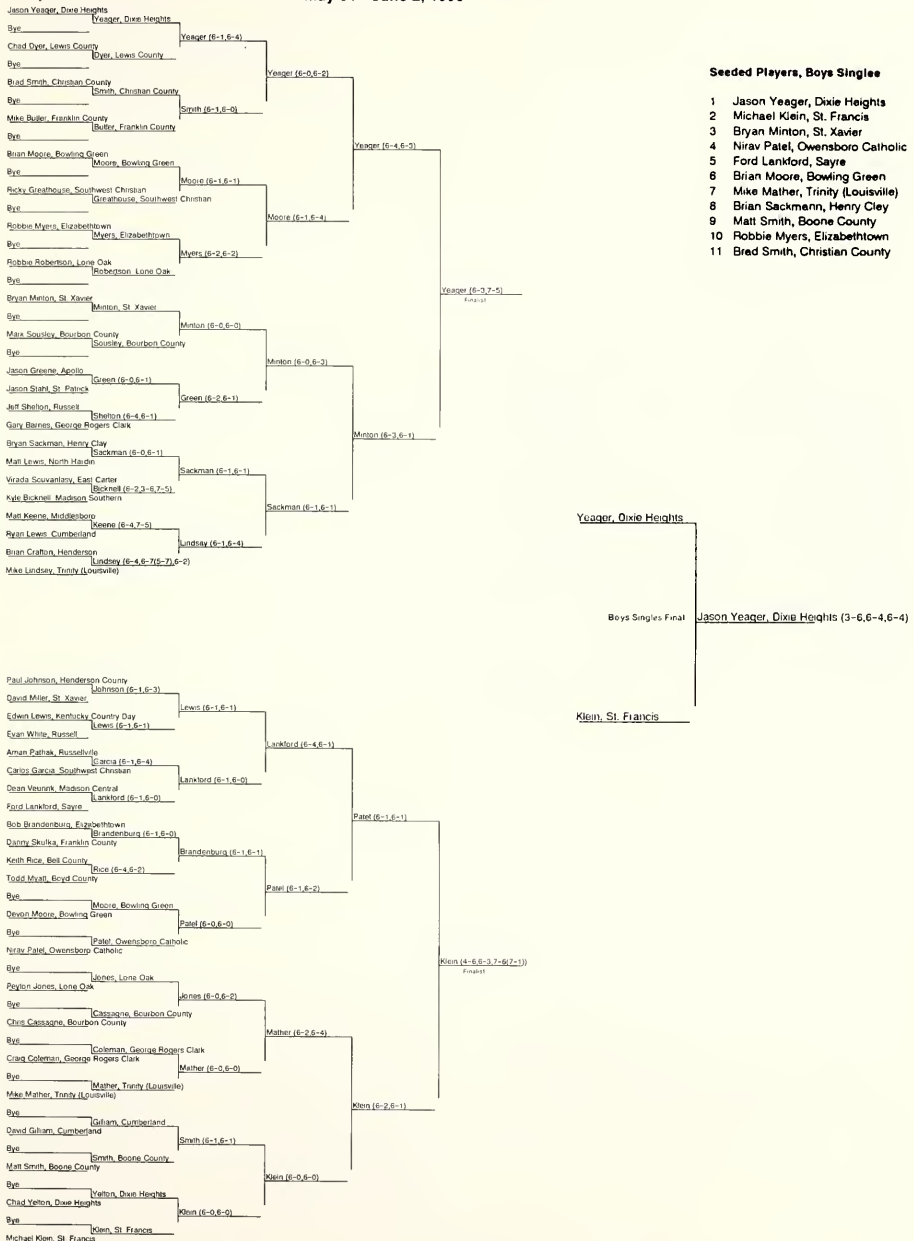
1990 K.H.S.A.A. State Tennis Tournament, Boys Singles

Downing Tennis Center, University of Kentucky

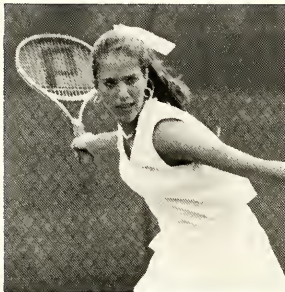
May 31 - June 2, 1990

Seeded Players, Boys Singles

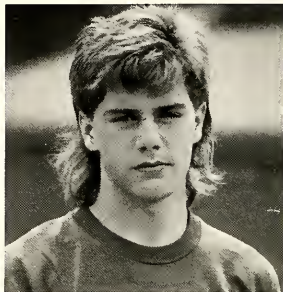
- 1 Jason Yeager, Dixie Heights
- 2 Michael Klein, St. Francis
- 3 Bryan Minton, St. Xavier
- 4 Nirav Patel, Owensboro Catholic
- 5 Ford Lankford, Sayre
- 6 Brian Moore, Bowling Green
- 7 Mike Mather, Trinity (Louisville)
- 8 Brian Sackman, Henry Clay
- 9 Matt Smith, Boone County
- 10 Robbie Myers, Elizabethtown
- 11 Bred Smith, Christian County



1989-90 TENNIS CHAMPIONS
University of Kentucky - Lexington
May 31 - June 2, 1990



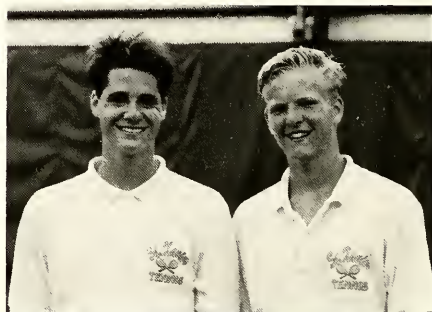
GIRLS SINGLES CHAMPION
Laura Schwab
Sacred Heart



BOYS SINGLES CHAMPION
Jason Yeager
Dixie Heights

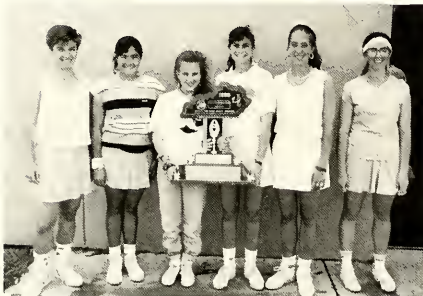


GIRLS DOUBLES CHAMPIONS
Leslie Mehlbauer - Chastity Chandler
Sacred Heart



BOYS DOUBLES CHAMPIONS
Scott Trieibly - Brice Brown
St. Xavier

GIRLS STATE CHAMPION
Sacred Heart Academy



(L to R): Pat Zimlich, Chastity Chandler, Amy Kremer, Leslie Mehlbauer, Laura Schwab, Marti Stedle.

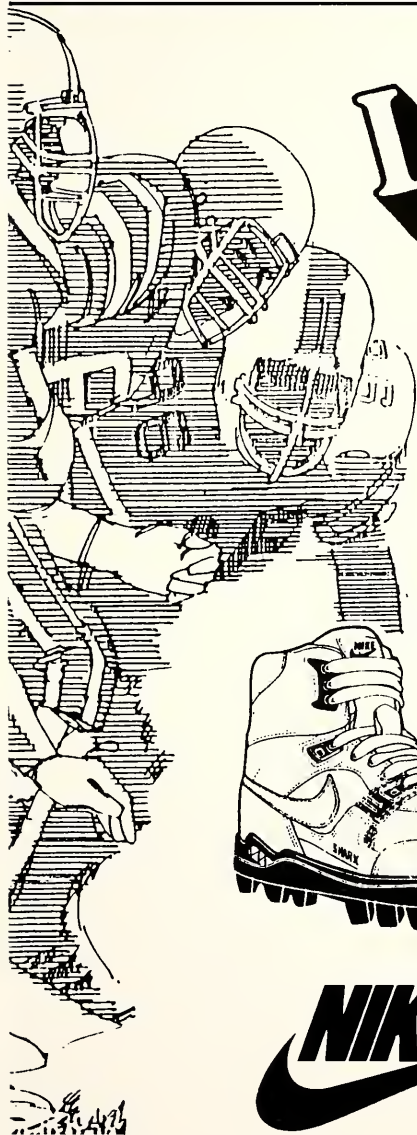
BOYS STATE CHAMPION
St. Xavier



(First Row): Scott Trieibly and Brice Brown. (Second Row): Clay Shulhater, Bryan Minton, Drew Deener, Brad Cash, Michael Chichwak. (Third Row): Chad Muntan, Adam Bibb, Clark Walker, Michael Jankowski, David Miller, Andy Greiner.

LOWE'S
SPORTING GOODS
"Athletic Specialist"

33 Years
Of Experience!
LONDON — CORBIN - PIKEVILLE
TOLL FREE
1-800-442-0132

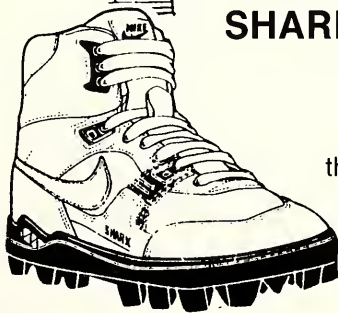


LOWE'S

**KNOWS
ATHLETICS**

Go With The People That Know!

**THE NIKE SHARK
SHARK LEATHER HIGH**



For a multi-purpose shoe with great support and durability, NIKE presents the SHARK LEATHER HIGH.

This shoe features a comfortable leather upper, forefoot stability straps and a three-color molded rubber cupsole for excellent traction on natural turf surfaces.



Cheer on your team in outdoor comfort.



Portable vinyl stadium seats and cushions. Comfortably thick stadium seats get you the extra attention your name deserves. The Portable Stadium Seat features a fold-down back rest, and a built-in carrying handle. Also features a high-impact plastic frame that will not rust or tarnish. Both cushions and seats are weather-resistant and covered with heat-sealed vinyl. Colors: Red, blue, orange, maroon, green, purple, gold, black or white.

No. 88740-VSC1, 1 1/2" x 14" Square Vinyl Stadium Cushion.

No. 88740-VSC2, 2" x 13 1/2" Square Vinyl Stadium Cushion.

No. 88740-PSS, Portable Stadium Seat.

	1990	100	250	500	1M	2500	5M	10M
No. 88740-VSC1	3.20	3.00	2.85	2.65	2.48	2.00	1.75	
No. 88740-VSC2	3.60	3.35	3.18	2.93	2.68	2.24	2.04	
No. 88740-PSS	48	96	192	384	768	1000		
		13.00	12.25	11.50	10.00	9.00	7.85	

Yell-A-Phones. The rage for football, basketball or baseball games. Made of strong, durable polystyrene for long-lasting spirit boosting. Colors: Blue, green, maroon, orange, purple, red, white or yellow. Size: 7 1/4" x 5"

No. 88740-71054, Imprinted Yell-A-Phone.

No. 88740-71541, Imprinted Yell-A-Phone with neck chain.

	1990	100	250	500	1M	2500	5M	10M	25M
No. 88740-71054	1.48	1.41	1.24	1.10	1.05	.95	.86	.80	
No. 88740-71541	1.82	1.72	1.55	1.39	1.32	1.22	1.09	1.05	

Imprinting: Prices include one standard color imprint, one side/location; VSC1, VSC2 and PSS, add \$30(T) set-up charge; 71054 and 71541, add \$30(P) set-up charge. **Second color/second side:** 71054 & 71541, add \$30(P) screen/set up charge plus 24¢(P) per piece running charge. All others, add \$30(T) screen/set up plus 25¢(T) per piece running charge. **Factory artwork:** \$30.00 per hour. **F.O.B.:** TX. **Classification:** VSC1 & VSC2, SRST; PSS, SR2ST; 71054 & 71541, 2PQ3R2S. **Production time:** 3-4 weeks.

Richard's

231 West Main St. Glasgow, Ky. 42141
1-800-274-4373

Kentucky High School Athletic Association
P.O. Box 22280
Lexington, KY 40522

Non-Profit Org.
U.S. Postage
PAID
Richmond, KY
Permit No. 108