

9-1-1990

# The Athlete, September 1990

Kentucky High School Athletic Association

Follow this and additional works at: <http://encompass.eku.edu/athlete>

---

## Recommended Citation

Kentucky High School Athletic Association, "The Athlete, September 1990" (1990). *The Athlete*. Book 361.  
<http://encompass.eku.edu/athlete/361>

This Article is brought to you for free and open access by the Kentucky High School Athletic Association at Encompass. It has been accepted for inclusion in The Athlete by an authorized administrator of Encompass. For more information, please contact [Linda.Sizemore@eku.edu](mailto:Linda.Sizemore@eku.edu).

# THE A T H L E T E

September 1990

Volume LII, No. 2



Official Publication of  
The Kentucky High School  
Athletic Association

Member of National Federation of State High School Associations



## National Federation Announces Second Annual "Dreamers and Doers" Awards



### STATE WINNER - AMY M. DODRILL, BALLARD

I was so embarrassed when my parents and teacher decided I should repeat the first grade. I knew I was smarter than they thought. When my second grade teacher selected students to be tested for the advanced class, I was not chosen. It took all of my courage to ask her, "Why not?" She allowed me to be tested. My score placed me in the advanced class, and I learned that I had to make things happen.

In high school, I still take the time consuming and difficult advanced classes, and I am learning. Now, I have a new challenge, art. My freshman year, I did not know much about art, but I fought to stay with the class. With time, a good teacher, and persistence, I learned enough to be able to contribute to our school's art program by exhibiting my work and even having some winning entries in local art competitions. My classmates even chose me to design the cover for the program for our Beta Club initiation.

Last week, as the 5'4" point guard on my basketball team, I was chosen to guard the 6'3" All-State guard from the number 12 ranked team in the country - who me? OK, she scored thirteen points, but we won! As is obvious, height is not one of my advantages in this tall person sport, but I am a starter on the school team. Even though I am better known as "shrimp", I fight to win with every inch, and I have contributed to making the team a success.

Anyone can be a dreamer, but to reach or even come close to those dreams, you must pursue them with determination and confidence. I am a doer. I attack things head on with courage and curiosity. I participate in as many activities as I can with the belief that participation is not enough. You must give your all, then, whether you come out on top or on the bottom does not matter. With your best effort you will accomplish at least a part of your dreams.

### STATE RUNNER-UP - CHRIS MANUS, WHITLEY COUNTY

The Four C's — Curiosity, Confidence, Courage, and Constasy have been part of my life for as long as I can remember. Curiosity is a great motivator, and it has helped me in my desire to be the best I can be. I have always wanted to be actively involved in experiences rather than just being told about them or reading in my book about someone else doing them. Through this curiosity, I have gained confidence as I learned new ideas, methods, and more about myself. This has helped me in my role as president of our Student Council. To assume this office took courage, for it meant I would be acting on behalf of my peers in committees and in other decision-making positions. This is not always easy because sometimes those decisions are difficult ones to make. However, the students and my teachers know I will try to do what I believe is best for my classmates and my school. They know I can be counted on to always give my best effort. Through combining curiosity, confidence, and courage, I have created a constancy in my performance in the classroom, on the playing field/floor, and in my role as a student leader. This steadfastness has made me a determined young man with great hope for the future.



Amy Dodrill (left) talking with Brandi Johnson, Florida, an Olympic gymnast.

### OTHER FINALISTS

**MARK ALLAN BLAIR**, Boyle County H.S.

**MATTHEW THOMAS MURRELL**, Henry Clay H.S.

**MICHAEL SMITH**, Male H.S.

**CARMAN FAYE THORNTON**, Harrison Co. H.S.

# The Kentucky High School Athlete

## Official Publication of the Kentucky High School Athletic Association

VOL. LII, NO. 2

SEPTEMBER, 1990

\$10.00 PER YEAR



### MINUTES OF THE BOARD MEETING

July 27, 1990

The Board of Control of the Kentucky High School Athletic Association met at Barkley Lodge, Cadiz, Kentucky, on Friday, July 27, 1990. The meeting was called to order at 8:30 a.m. by President Sam Chandler. Present were all Board members with the exception of C.K. Henry, Commissioner Tom Mills and Louis Stout. Also present were Julian Tackett, S.I.D. and Harry Loy representing the State Department of Education. The Invocation was given by Sam Chandler.

Charlie Miller made the motion, seconded by Jack Portwood, that the minutes of the April 19 meeting be approved. The motion passed unanimously.

Huston DeHaven made a motion that the minutes of the West Eligibility Committee Meeting of June 28, 1990 be approved. Sam Chandler seconded the motion which passed unanimously.

Marvin Moore made a motion that David Points be elected President of the Board for the 1990-91 school year. Alvis Johnson seconded the motion which carried unanimously.

Outgoing President Chandler thanked the Board for their support during his tenure and welcomed new Board members Harry Jansing and Ray Story. He then turned the meeting over to David Points.

Mr. Points then asked for nominations for Vice President. Marvin Moore nominated Alvis Johnson. The nomination was seconded by Bob Rogers. With no more nominations, Mr. Johnson was elected Vice President by a unanimous vote.

Tom Mills gave a brief report on his attendance at the National Federation Meeting held in Minneapolis, Minnesota. Eight Board members attended.

President Points appointed the following committees:

#### EXECUTIVE COMMITTEE:

Alvis Johnson, Chairperson; Bob Rogers, Vice Chairperson, Sandy Allen, Marvin Moore, Jack Portwood, Eddie Saylor, David Points.

#### ALL-SPORTS COMMITTEE:

Sandy Allen, Chairperson; Harry Jansing, Vice Chairperson; Huston DeHaven, Alvis Johnson, Jack Portwood, Liz Trabandt.

#### BASKETBALL COMMITTEE:

Marvin Moore, Chairperson; Huston DeHaven, Vice Chairperson; Sandy Allen, Harry Jansing, Bob Rogers, Eddie Saylor, Ray Story.

#### FOOTBALL COMMITTEE:

Bob Rogers, Chairperson; Jack Portwood, Vice Chairperson; Alvis Johnson, Marvin Moore, Eddie Saylor, Ray Story, Liz Trabandt.

#### EAST ELIGIBILITY COMMITTEE:

Eddie Saylor, Chairperson; Marvin Moore, Vice Chairperson; Alvis Johnson, David Points, Jack Portwood, Liz Trabandt.

#### WEST ELIGIBILITY COMMITTEE:

Huston DeHaven, Chairperson; Sandy Allen, Harry Jansing, Bob Rogers, Ray Story.

#### BUILDING COMMITTEE:

Huston DeHaven, Alvis Johnson, Marvin Moore, Tom Mills, Ray Story, Liz Trabandt, Billy Wise.

Sandy Allen made a motion that the Board establish a Constitution & By-Laws Committee. This committee would look at current issues that may need updating and would study proposals mailed to the Commissioner for consideration at the Delegate Assembly meeting in April. She suggested that this committee be permanent and appointed by the President. Jack Portwood seconded the motion. The motion passed unanimously. President Points appointed the following persons to serve for 1990-91: Liz Trabandt, Chairperson, Sandy Allen, Huston DeHaven, Harry Jansing, Alvis Johnson, Bob Rogers, Ray Story and Billy Wise.

Following a discussion of the resignation of Board member C.K. Henry, Huston DeHaven moved that the Board authorize Commissioner Mills to begin immediately to seek a replacement according to the procedure set forth in the By-Laws. Jack Portwood seconded the motion which passed unanimously.

Commissioner Mills distributed the 1990-91 Working Budget for the Board's consideration. He requested that the Board look over the budget and have questions and/or comments when it is presented for approval at the October meeting.

The Board set the date and time for the next meeting to be held on Saturday, October 13 at 8:30 a.m. in Lexington at the K.H.S.A.A. Office.

#### MISCELLANEOUS ITEMS:

In the absence of Exec. Asst. Wise, Commissioner Mills presented three National Federation Basketball Rule Changes which may be adopted on an individual state basis. Mr. Wise had recommended that Kentucky experiment with the rule changes as follows: 1) the current bonus free throw provision, one plus one on and after the fifth team foul of the half, is eliminated. In its place, all fouls, personal and technical, committed by a player on and after the seventh (7th) foul of a half shall result in the offended team being awarded two free throws; 2) all technical and personal fouls called against a player shall be counted toward the limit of five fouls per player prior to disqualification; 3) all technical and personal fouls called against a player, coach or team shall be counted toward the limit of fouls per half before the two shot provision. Marvin Moore made a motion that the Board accept Mr. Wise's recommendation and adopt the experimental rules for the 1990-91 season. Jack Portwood seconded the motion which passed by a vote of 10-1.

Commissioner Mills then advised the Board of other items of interest: 1) The catastrophic insurance premium for the 1990-91 school year will be \$142,500. This policy provides for a \$10,000 deductible, \$150,000 liability coverage; 2) A request from Jackson City Schools to move from the 56th Basketball District to the 55th District. This request will be considered by the Basketball Committee and presented to the Board at the regular meeting in January.

The Commissioner presented a letter from Fort Knox High School requesting that the Board set aside Section (3) of By-Law 6, Transfer Rule, to allow for students to practice prior to the time the transfer form is received and the student is declared eligible by the Commissioner. Marvin Moore made a motion, seconded by Bob Rogers that the Board deny Fort Knox's request due to the fact that the Board has no authority to set aside a rule. The motion passed unanimously.

The next communication was presented by Commissioner Mills on behalf of Chris Goodwin, Harlan High School. Principal Bob Morris requested an extra year of eligibility for Chris to participate in athletics. Following a discussion of the case, Sandy Allen made a motion to deny an extra year of eligibility due to the fact that Chris has been enrolled in grades 9-12 for eight semesters. Liz Trabandt seconded the

**SEPTEMBER, 1990**

**VOL. LII, NO. 2**

Published monthly, except June and July, by the Kentucky High School Athletic Association, Office of Publication, 560 E. Cooper Dr., P.O. Box 22280, Lexington, KY 40522.

Third class postage paid at Richmond, Kentucky. Acceptance for mailing at special rate of postage provided for in Section 1103. Act of October 3, 1917, authorized May 3, 1926. Publication No. 293080.

Please send notice of undelivered copies on form 3579 to: K.H.S.A.A., P.O. Box 22280, Lexington, Kentucky 40522.

Editor ..... **TOM MILLS**  
 Assistant Editor ..... **ANNE WESLEY MAYS**  
 Assistant Editor ..... **BRIGID L. DeVRIES**  
 Assistant Editor ..... **LOUIS STOUT**  
 Assistant Editor ..... **BILLY V. WISE**  
 Assistant Editor ..... **JULIAN TACKETT**  
 Lexington, Kentucky

**BOARD OF CONTROL**

President - David Points (1988-1991) Mt. Sterling; Vice-President - Alvis Johnson (1989-1993) Harrodsburg; Directors - Sandy Allen (1988-1992) Louisville, Huston DeHaven (1987-1991) Hardinsburg, Harry Jansing (1990-1994) Louisville, Marvin Moore (1988-1992) Morehead, Jack Portwood (1989-1993) Stanford, Bob Rogers (1989-1993) Murray, Eddie Saylor (1989-1992) Molus, Ray Story (1990-1994) Vine Grove; Liz Trabant (1988-1991) Ashland; State Department of Education - Harry Loy, Frankfort.

Subscription Rate ..... \$10.00 per year

motion which passed by a vote of 10-1.

Commissioner Mills then presented a request from Oldham County High School on behalf on Travis J. Cole requesting another year of eligibility. Following a discussion of this case, Bob Rogers made a motion to deny Oldham County's request. Marvin Moore seconded the motion which passed by a vote of 10-1.

The next written appeal was on behalf of Laurel County High School. Commissioner Mills presented an appeal of By-Law 4, Section 1, Maximum Number of Semesters, for Jackie Steele. Commissioner Mills presented the information on the case and a discussion ensued. A motion was made by Bob Rogers that the Board deny Jackie Steele's request. Jack Portwood seconded the motion which passed unanimously.

Marvin Moore moved that all bills of the Association for the period beginning April 1, 1990 and ending July 31, 1990, be allowed. Alvis Johnson seconded the motion which passed.

Louis Stout distributed new Softball and Baseball alignments. He advised the Board that redistricting/and or changes made in the alignments were due mostly to the consolidation of schools.

Bob Rogers then moved to adjourn for lunch. The motion passed.

The Appeals Hearing were the next items on the Agenda. Coach Bev Hart, Bethlehem High School presented the first appeal of By-Law 6, Transfer Rule on behalf of Teddy Crume, Jason Cheek and Alec Hagan who had transferred from Bardstown High School and who were present with Coach Hart. Also present was Principal Jude Talbott from Bardstown High School. Following Coach Hart's presentation and questions to each of the appellants and Mr. Talbott, Mr. Talbott withdrew his objection to the transfers and recommended to the Board that the transfer rule be waived in favor of the three students in question.

The next appeal was made by Principal Bob Rowland, Danville High School, on behalf of Chester Ford and Joel

Grey. Due to the nature of the case, Mr. Rowland requested that the hearing be closed. Therefore, Bob Rogers moved for a Closed Session, seconded by Marvin Moore. The motion passed. Following the hearing, Liz Trabant moved that the meeting return to Open Session. Huston DeHaven seconded the motion which passed. Sandy Allen then made a motion that the Commissioner's ruling be upheld in this case. Eddie Saylor seconded the motion which passed by a vote of 9-2.

Supt. J.D. Minnehan, Triggy County Schools, presented the next appeal. Mr. Minnehan had requested a hearing before the Board to appeal the Age Rule on behalf of Jimmy Duffie. Following the presentation, questions by members of the Board and a lengthy discussion thereof, Eddie Saylor made a motion that the Age Rule not be waived in this case. Marvin Moore seconded the motion which passed unanimously.

Lyle Dunbar then appeared before the Board regarding his concerns of possible recruiting in the Hopkinsville area. Mr. Dunbar was advised to submit allegations in writing to the Commissioner.

There being no further business to come before the Board, Huston DeHaven moved for adjournment. The motion was seconded by Bob Rogers and passed unanimously.



**1990-91 Volleyball Regions**

**REGION I**

Beth Haven  
Butler  
Doss  
Evangel  
Fairdale  
Holy Cross

Holy Rosary  
Pleasure Ridge Park  
Shawnee  
Southwest Christian  
Valley  
Western

**REGION II**

Brown  
Central  
duPont Manual  
Highview Baptist  
Iroquois  
Male

Mercy Academy  
Moore  
Ninth & O  
Portland Christian  
Presentation  
Southern

**REGION III**

Assumption  
Atherton  
Ballard  
Christian Academy  
Eastern  
Fern Creek  
Jeffersontown

Kentucky Country Day  
Oldham County  
Sacred Heart  
Seneca  
South Oldham  
Waggener

**REGION IV**

Beechwood  
Dixie Heights  
Grant County  
Holmes  
Holy Cross  
Lloyd Memorial

Ludlow  
Notre Dame  
St. Henry  
Scott  
Simon Kenton  
Villa Madonna

**REGION V**

Belleuve  
Bishop Brossart  
Boone County  
Bracken County  
Campbell County

Conner  
Dayton  
Highlands  
Newport  
Newport Central Catholic  
Walton-Verona

**REGION VI**

Breathitt County  
Fort Knox  
Franklin County  
Oneida Baptist  
Paul Blazer

Rowan County  
Russell  
Western Hills  
Whitesburg  
Woodford County



## Activities Week Checklist for Schools

The following is a checklist on ways for high schools across the United States to become involved in National High School Activities Week. Become involved this year in supporting interscholastic activity programs.

**ORGANIZE** an Activities Week Committee of faculty and student representatives.

**PLAN** special events for the following "official" days:

**Monday** - Oct. 15, 1990 - National Officials Day  
**Tuesday** - Oct. 16, 1990 - National Speech and Music Day  
**Wednesday** - Oct. 17, 1990 - National Chemical Health Awareness Day

**Thursday** - Oct. 18, 1990 - National Sportsmanship Day  
**Friday** - Oct. 19, 1990 - National Coaches Day  
**Saturday** - Oct. 20, 1990 - National Fundraising Day

**PUBLICIZE** the upcoming Activities Week events - both inside the school and outside in the community. This may involve distribution of posters, placards, flyers, etc. to inform the public.

**MAIL** announcements and articles about Activities Week to local newspapers and radio stations.

**SPOTLIGHT** a regularly scheduled interscholastic event during the week and attempt to have a sellout crowd. You may want to plan a special attraction such as holding a raffle or conducting a poster or slogan contest. Invite prominent community leaders to attend and be recognized for their support of activity programs, or schedule performances by student activity groups (pom-poms, band, drama, etc.)

**HOST** a special luncheon or reception recognizing faculty and other community members who coach, sponsor or officiate school activity programs.

**ARRANGE** for students in your high school activity programs to visit the elementary and middle schools to provide forensics and music demonstrations. Your students also could speak about the fun and educational values derived from involvement in activities.

**REQUEST** local clergy to support Activities Week by addressing the benefits of activity programs - sportsmanship, teamwork, trying one's best - in their announcements or sermons.



**NATIONAL HIGH SCHOOL  
ACTIVITIES WEEK  
OCTOBER 14-21, 1990**

## 1990-1991 Regional Golf Managers



### GIRLS' MANAGER

**Murray** - Judy Muehleman, Murray High School, 501 Doran Road, Murray, KY 42445, 502-753-5202

**Glasgow** - Mike Harris, Glasgow High School, Columbia Avenue, Glasgow, KY 42141, 502-651-8801

**Louisville** - Raymond Kuhn, Ballard High School, 6000 Brownsboro Road, Louisville, KY 40222, 502-473-8206

**Elizabethtown** - Pat Wise, Elizabethtown High School, 620 North Mulberry Street, Elizabethtown, KY 42701, 502-769-3381

**Woodford County** - Lou Brown, Jessamine County High School, Route 4, Nicholasville, KY 40356, 606-887-2421

**Owen County** - Gran Mefford, Owen County High School, Route 4, Owenton, KY 40359, 502-484-5509

**Richmond** - Sue Tussey, Madison Central High School, 705 North Second Street, Richmond, KY 40475, 606-623-1530

**Montgomery County** - Marty Feltner, Montgomery County High School, 724, Woodford Drive, Mt. Sterling, KY 40353, 606-498-2250

\* **STATE MANAGER** - Lou Brown, Jessamine County High School, Route 4, Nicholasville, KY 40356, 606-887-2421 (School) 606-885-3952 (Home)

### BOYS' REGIONAL MANAGERS

**Mayfield** - Lanny Lancaster, Mayfield High School, 700 Douthitt Street, Mayfield, KY 42056, (502) 247-4461

**Owensboro** - Ron Peyton, Owensboro High School, 1800 Frederica Street, Owensboro, KY 42301, 502-684-7221

**Bowling Green** - Danny Spillman, Bowling Green High School, 1801 Rockingham Lane, Bowling Green, KY 42101, 502-842-1674

**Frankfort** - Scott Tippett, 961 Leestown Road, Wilkinson Street, Frankfort, KY 40601

**Washington County** - Bill Frost, Washington County High School, Lincoln Park Road, Springfield, KY 40069, 606-336-3996

**West Jefferson** - Joe Freshley, Valley High School, 10200 Dixie Highway, Louisville, KY 40272, 502-473-8339

**East Jefferson** - Marty Donlon, St. Xavier High School, 1609 Poplar Level Road, Louisville, KY 40217, 502-636-2525 / 502-637-4712

**Covington** - Rick Hornsby, Covington Catholic High School, 1600 Dixie Highway, Covington, KY 41011, 606-431-5351

**Campbell County** - Bill Detzel, Highlands High School, 2400 Memorial Parkway, Fort Thomas, KY 41075, 606-781-3333

**Somerset** - Jeff Littrell, Somerset High School, College Street, Somerset, KY 42501, 606-678-4721

**Paintsville** - Walter Brugh, Paintsville High School, P.O. Box 152, Paintsville, KY 41240, 606-789-3881

\* **STATE TOURNAMENT MANAGER** - John Hackett, 830 McCullum Avenue, Elizabethtown, KY 42701, 502-765-4240

\* **COORDINATOR** - Larry Schmidt, Kentucky Golf Association, P.O. Box 20146, Louisville, KY 40220

**1990 GIRLS' GOLF REGIONS**

**MURRAY** - Ballard Memorial, Caldwell County, Calloway County, Central City, Christian County, Crittenden County, Fort Campbell, Fulton, Graves County, Greenville, Heath, Henderson County, Hickman County, Hopkinsville, Lone Oak, Lyon County, Madisonville-North Hopkins, Marshall County, Mayfield, Murray, Ohio County, Paducah Tilghman, Reidland, St. Mary, Todd County Central, Union County, Webster County, West Hopkins.

**GLAGOW** - Allen County, Apollo, Barren County, Bowling Green, Butler County, Caverna, Clinton County, Daviess County, Franklin-Simpson, Glasgow, Greenwood, Hart County, Logan County, Monroe County, Muhlenberg North, Muhlenberg South, Owensboro, Russellville, Warren Central.

**LOUISVILLE** - Atherton, Assumption, Ballard, Butler, Central, Christian Academy, Doss, duPont Manual, Eastern, Evangel, Holy Cross, Holy Rosary, Iroquois, Kentucky Country Day, Louisville Collegiate, Male, Mercy, Pleasure Ridge Park, Portland Christian, Sacred Heart, Shawnee, Southern, Southwest Christian, St. Francis, Valley, Waggener, Walden, Western

**ELIZABETHTOWN** - Adair County, Bardstown, Bethlehem, Boyle County, Breckinridge County, Bullitt Central, Bullitt East, Campbellsville, Central Hardin, Danville, Elizabethtown, Fort Knox, Green County, Hancock County, Marion County, Meade County, Nelson County, North Hardin, Taylor County, Washington County.

**OWEN COUNTY** - Beechwood, Boone County, Carroll County, Campbell County, Conner, Dayton, Dixie Heights, Eminence, Grant County, Highlands, Holmes, Holy Cross, Oldham County, Owen County, Newport Central Catholic, Notre Dame, Scott, Silver Grove, Simon Kenton, South Oldham, Trimble County, Villa Madonna, Williamstown.

**WOODFORD COUNTY** - Bracken County, Bryan Station, Frankfort, Franklin County, Harrodsburg, Henry Clay, Jessamine County, Lafayette, Lexington Catholic, Mercer County, Paul Dunbar, Scott County, Shelby County, Bates Creek, Western Hills, Woodford County.

**RICHMOND** - Belfry, Berea, Casey County, Cawood, Corbin, Cumberland, Estill County, Garrard County, George Rogers Clark, Harlan, Jenkins, Knox Central, Laurel County, Lee County, Lincoln County, McCreary Central, Madison Central, Madison Southern, Model, Monticello, Pineville, Pulaski County, Russell County, Somerset, Wayne County, Whitesburg

**MONTGOMERY COUNTY** - Boyd County, Fleming County, Harrison County, Hazard, Johnson Central, McDowell, Mason County, Maysville, Montgomery County, Nicholas County, Paintsville, Paul Blazer, Pikeville, Powell County, Prestonsburg, Raceland, Rowan County, St. Patrick.

**1990 BOYS' GOLF REGIONS**

**CAMPBELL COUNTY** - Bellevue, Bishop Brossart, Campbell County, Dayton, Fleming County, Grant County, Highlands, Lewis County, Mason County, Maysville, Newport, Newport Central Catholic, Pendleton County, St. Patrick, Silver Grove, Williamstown.

**FRANKFORT** - Bourbon County, Bracken County, Bryan Station, Eminence, Frankfort, Franklin County, George Rogers Clark, Harrison County, Henry Clay, Henry County, Lafayette, Lexington Catholic, Millersburg Military Institute, Montgomery County, Nicholas County, Oldham County, Paris, Paul Dunbar, Sayre, Scott County, Shelby County, South Oldham, Bates Creek, Western Hills, Woodford County.

**WASHINGTON COUNTY** - Adair County, Anderson County, Bardstown, Bethlehem, Boyle County, Burgin, Campbellsville, Casey County, Danville, Garrard County, Green County, Harrodsburg, Jessamine County, Lincoln County, Marion County, Mercer County, Nelson County, Russell County, Taylor County, Washington County.

**SOMERSET** - Berea, Bell County, Cawood, Corbin, Cumberland, Estill County, Harlan, Knox Central, Laurel County, Lee County, McCreary County, Madison Central, Madison Southern, Middlesboro, Model, Monticello, Oneida Baptist Institute, Pineville, Pulaski County, Somerset, Wayne County, Whitley County.

**PAINTSVILLE** - Bath County, Belfry, Betsy Layne, Boyd County, East Carter, Fairview, Hazard, Greenup County, Elkhorn City, Jenkins, Johnson Central, June Buchanan, Knott County Central, Lawrence County, McDowell, Paintsville, Paul Blazer, Phelps, Pikeville, Powell County, Prestonsburg, Raceland, Rose Hill, Rowan County, Russell, Sheldon Clark, Whitesburg.

**PRINCETON** - Ballard Memorial, Caldwell County, Calloway County, Christian County, Crittenden County, Fort Campbell, Fulton, Fulton County, Graves County, Hickman County, Hopkinsville, Lone Oak, Lyon County, Marshall County, Mayfield, Murray, Paducah Tilghman, Reidland, St. Mary, Todd County Central, University Heights.

**OWENSBORO** - Apollo, Breckinridge County, Central City, Daviess County, Greenville, Hancock County, Henderson County, McLean County, Madisonville-North Hopkins, Muhlenberg North, Muhlenberg South, Ohio County, Owensboro, Owensboro Catholic, Providence, South Hopkins, Union County, Webster County, West Hopkins.

**BOWLING GREEN** - Allen County, Barren County, Bowling Green, Butler County, Caverna, Clinton County, Cumberland County, Edmonson County, Franklin-Simpson, Glasgow, Grayson County, Greenwood, Hart County, LaRue County, Logan County, Monroe County, Russellville, Warren Central, Warren East.

**WEST JEFFERSON** - Beth Haven, Bullitt Central, Bullitt East, Butler, Central, DeSales, Doss, East Hardin, Elizabethtown, Evangel, Fairdale, Holy Cross, Iroquois, Meade County, Ninth & O, North Bullitt, North Hardin, Pleasure Ridge Park, Portland Christian, Shawnee, Southern, Southwest Christian, Valley, Western, West Hardin.

**EAST JEFFERSON** - Atherton, Ballard, Christian Academy, duPont Manual, Eastern, Fern Creek, Jeffersonton, Kentucky Country Day, Louisville Collegiate, Male, Moore, St. Francis, St. Xavier, Seneca, Trinity, Waggener, Walden.

**COVINGTON** - Beechwood, Boone County, Carroll County, Conner, Covington Catholic, Covington Latin, Dixie Heights, Gallatin County, Holmes, Holy Cross, Lloyd Memorial, Owen County, St. Henry, Scott, Simon Kenton, Trimble County, Walton-Verona.

## TODD COUNTY CENTRAL - CLASS A GIRLS

### Kentucky High School Track Meet

### Lexington, Kentucky - May 26, 1990



FRONT ROW (L-R): Tina Edmonds, Veronica Shanklin. SECOND ROW: Gracey Harris, Franchell Seebre.

#### Class A

##### Girls' 100 Meter High Hurdles

1. Tina Edmonds, Todd County Central, 17.01
2. Carla Schneider, Bishop Brossart, 17.16
3. Rebecca Keen, St. Camillus, 17.28
4. Angie Shelly, Williamsburg, 17.63
5. Shelly Hardin, Bellevue, 17.93
6. Mary Hendricks, Raceland, 18.50

##### Girls' 100 Meter High Hurdles

1. Veronica Shanklin, Todd County Central, 12.79
2. Veanita Smith, Danville, 12.95
3. Jenny Zimmerman, Lloyd Memorial, 13.15
4. Shana Thomas, St. Henry, 13.16
5. Kim Huffaker, Everts, 13.18
6. Mona Arvie, Caverna, 13.21

##### Girls' 800 Meter Relay

1. Dayton, 1:48.56
2. Todd County Central, 1:46.57
3. Bishop Brossart, 1:48.91
4. St. Mary, 1:52.55
5. Everts, 1:54.16
6. Somerset, 1:54.9

##### Girls' 1600 Meter Run

1. Stephanie Edger, Dayton, 5:12.7
2. Adrienne Mason, Providence, 5:14.2
3. Debbie Finke, Danville, 5:18
4. Christina Brown, Owen County, 5:22.7
5. Lasenna Powell, Providence, 5:32.4
6. Bethany Rogers, Danville, 5:58.1

##### Girls' 400 Meter Relay

1. Bishop Brossart, 51.62
2. Danville, 51.82
3. Todd County Central, 52.02
4. Dayton, 52.87
5. Caverna, 53.3
6. Murray, 53.3

##### Girls' 400 Meter Dash

1. Mel Young, Menfee County, 59.61
2. Maureen Egan, St. Henry, 59.85
3. Veanita Smith, Danville, 1:00.9
4. Jill Whiteside, Mayfield, 1:01.9
5. Adrienne Mason, Providence, 1:02.3
6. Trina Goodrich, Berea, 1:04.2

##### Girls' 300 Meter Low Hurdles

1. Adrienne Hundemer, Dayton, 48.86
2. Tina Edmonds, Todd County Central, 49.4
3. Carla Schneider, Bishop Brossart, 50.2
4. Angie Shelly, Williamsburg, 50.3
5. Jenny Norris, Cumberland County, 50.7
6. Becky Fisher, Raceland, 53.8

##### Girls' 800 Meter Run

1. Maureen Egan, St. Henry, 2:21.44
2. Adrienne Mason, Providence, 2:24.3
3. Lasenna Powell, Providence, 2:28.3
4. Kimberly Hancock, Frankfort, 2:27.7
5. Debbie Finke, Danville, 2:30.8
6. Amy Tolliver, Berea, 2:35.7

##### Girls' 200 Meter Dash

1. Veronica Shanklin, Todd County Central, 25.78
2. Veanita Smith, Danville, 26.32
3. Shana Thomas, St. Henry, 26.85
4. Rose Durbin, St. Mary, 26.95
5. Mona Arvie, Caverna, 27.07
6. Kim Huffaker, Everts, 26.3

##### Girls' 3200 Meter Run

1. Amy Clements, St. Henry, 11:40.6
2. Christina Brown, Owen County, 11:51.4
3. Paige Howard, Everts, 13:13.2
4. Misty Wesley, Somerset, 13:21.2
5. Bethany Rogers, Danville, 13:35.2
6. Stephanie Gifford, Providence, 13:38.9

##### Girls' 1600 Meter Relay

1. Dayton, 4:10
2. St. Henry, 4:14.9
3. Providence, 4:19.8
4. Danville, 4:22
5. St. Mary, 4:24.4
6. Fleming-Neon, 4:33.3

##### Girls' Shot Put

1. Kim Johnson, Harlan, 37'10.5
2. Katina Brooks, Providence, 374.5
3. Kim Walker, Danville, 33'5
4. Franchell Seebre, Todd County Central, 32'9
5. Kim Haubner, Bishop Brossart, 31'6
6. Kendra Martin, Caverna, 31'0

##### Girls' Discus

1. Kim Johnson, Harlan, 111'4
2. Katina Brooks, Providence, 102'11
3. Kristina Johns, Dayton, 103'3
4. Patsy Gilmore, Providence, 98'1
5. Jenny Atwood, Bellevue, 94'7
6. Ruby Noble, Cordia, 87'5

##### Girls' Long Jump

1. Gracey Harris, Todd County Central, 16'5.5
2. Alyshia Daniel, Dayton, 16'0
3. Barbara Mullins, Elkhorn City, 15'10
4. Loni Pfefferman, Bishop Brossart, 15'7.5
5. Donna Lunce, Williamsburg, 15'7.5
6. Mona Arvie, Caverna, 15'5.75

##### Girls' High Jump

1. Kim Haubner, Bishop Brossart, 4'10
2. Sarah Bradbury, Kentucky Country Day, 4'8
2. Jenni Nicholson, Williamsburg, 4'8
2. Lucy Miller, Harlan, 4'8
5. Jenny Atwood, Bellevue, 4'8
6. Lisa Deramus, Pikeville, 4'8
6. Cassidy Spencer, Todd County Central, 4'6

##### Girls' Class A Team Totals

Todd County Central	66.50
Dayton	58.00
Providence	53.00
Danville	51.00
Bishop Brossart	46.00
St. Henry	46.00
Harlan	26.00
Williamsburg	16.00
Owen County	12.00
Everts	11.00
Menfee County	10.00
St. Mary	10.00
Caverna	7.00
Bellevue	6.00
Elkhorn City	6.00
Kentucky Country Day	6.00
Lloyd Memorial	6.00
St. Camillus	6.00
Somerset	5.00
Frankfort	4.00
Mayfield	4.00
Berea	2.00
Cumberland County	2.00
Raceland	2.00
Cordia	1.00
Fleming-Neon	1.00
Murray	1.00
Pikeville	0.50



## DANVILLE HIGH SCHOOL - CLASS A BOYS

### Kentucky High School Track Meet

### Lexington, Kentucky - May 26, 1990



**FRONT ROW (KNEELING):** Donnie Redd, Joe Ganns. **SECOND ROW (L-R):** Coach E.G. Plummer, Ed White, Chris Grey, Don Harris, Roy McCowan. **THIRD ROW:** Chris Hamilton, Clark Walker, Shaun Robinson, John Hart. **BACK ROW:** Roy Walker, Colin Rogers.

#### Class A

##### Boys' 110 Meter High Hurdles

1. Vinson Whitehead, Danville, 14.53
2. Steve Bailey, Pikeville, 14.54
3. Chris Hetzel, Ludlow, 15.18
4. John Allen, Cumberland County, 15.87
5. Steven Hitz, Mayfield, 11.98
6. Shawn Long, Harlan, 16.41

##### Boys' 100 Meter Dash

1. Troy McCowan, Danville, 10.95
2. Brian Sowerby, Murray, 11.08
3. Jesse Herbst, Dayton, 11.24
4. Jermaine Morrow, Todd County Central, 11.27
5. Steve Bailey, Pikeville, 11.65
6. Mike Stewart, Raceland, 11.72

##### Boys' 1600 Meter Run

1. Brandon Gayheart, Cordia, 4:29
2. Jon Hardesty, Somerset, 4:37.5
3. Randy Smith, Walton Verona, 4:38.9
4. Mark Powers, Hancock County, 4:44.1
5. Micah Hasty, Oneida Baptist, 4:45
6. Ed White, Danville, 4:44.6

##### Boys' 400 Meter Relay

1. Mayfield, 43.26
2. Dayton, 44.06
3. Bellevue, 44.97
4. Somerset, 45.9
5. Harlan, 45.9
6. Raceland, 46.0

##### Boys' 400 Meter Dash

1. Brian Sowerby, Murray, 49.49
2. Andre Morris, Russellville, 49.64
3. Jesse Herbst, Dayton, 51.24
4. Todd Tobergte, Ludlow, 51.27
5. Chris Hamilton, Danville, 51.83
6. Ruben Underwood, Harlan, 52.3

##### Boys' 300 Meter Int. Hurdles

1. Vinson Whitehead, Danville, 39.0
2. Chris Hetzel, Ludlow, 40.25
3. Corey Smith, Fulton County, 40.4
4. John Allen, Cumberland, 41.5
5. Eugene Myles, Lloyd Memorial, 41.8
6. J.B. Newman, Raceland, 43.0

##### Boys' 800 Meter Run

1. Rick Marran, Newport Central Catholic, 2:00.58
2. Scott Jackson, Bremen, 2:01.0
3. Scott Kamaday, Frankfort, 2:03.0
4. Brad Taylor, Williamsburg, 2:04.1
5. Ruben Underwood, Harlan, 2:04.6
6. Greg Earles, Mayfield, 2:06.2

##### Boys' 200 Meter Dash

1. Brian Sowerby, Murray, 22.35
2. William Murrell, Mayfield, 22.41
3. Brad Hassong, Bellevue, 23.12
4. Chris Hamilton, Danville, 23.42
5. Maurice Hollingsworth, Harlan, 23.76
6. Mike Stewart, Raceland, 23.8

##### Boys' 3200 Meter Run

1. Ed White, Danville, 10:05.5
2. Shawn Stanley, Cordia, 10:08
3. Tom Gabriel, Nicholas County, 10:20.7
4. Randy Smith, Walton Verona, 10:27.1
5. Mike Brock, Murray, 10:33.5
6. Keith Combs, Cordia, 10:45.2

##### Boys' 1600 Meter Relay

1. Todd County Central, 3:29.9
2. Dayton, 3:32.4
3. Harlan, 3:33.9
4. Kentucky Country Day, 3:39.5
5. Danville, 3:41.2
6. Everts, 3:48.8

##### Boys' Shot Put

1. Jarriel Rollins, Providence, 50'1
2. Shawn Sandusky, Somerset, 47'5
3. Mike Fraley, Elkhorn City, 47'3
4. Mike Chinn, Bellevue, 45'5.5
5. Shannon Powers, Mayfield, 44'1
6. Scott Fister, Lexington Catholic, 43'11.5

##### Boys' Discus

1. Scott Fister, Lexington Catholic, 154'2
2. Chuck Morgan, Berea, 138'11
3. Jeff Jackson, Oneida Baptist, 138'3
4. Jarriel Rollins, Providence, 135'2
5. Brian Wallen, Allen Central, 135'0
6. Billy Fedderman, Todd County Central, 132'0

##### Boys' Pole Vault

1. Beau Brown, Mayfield, 13'6
2. Sean Weaver, Newport Central Catholic, 13'0
3. Matt Krug, Murray, 12'0
4. Jeff Melville, Newport Central Catholic, 11'0
5. Matt Black, Kentucky Country Day, 11'0
6. Jimmy Black, Oneida Baptist, 10'6

##### Boys' Triple Jump

1. Brad Sullivan, Edmonson County, 43'0.5
2. Tony Mayes, Fulton County, 42'7.5
3. Chris Hetzel, Ludlow, 42'0
4. P.J. Hicks, Harlan, 41'4
5. Chad Franklin, Carroll County, 41'3.25
6. Damon Tigner, Oneida Baptist, 40'8.50

##### Boys' Long Jump

1. Corey Smith, Fulton County, 23'11
2. Chris Grey, Danville, 21'9.5
3. Tony Mayes, Fulton County, 21'8.5
4. Joe Ganns, Danville, 21'3.750
5. Chad Franklin, Carroll County, 21'3.250
6. Gene Alfred, Paris, 21'1.5

##### Boys' High Jump

1. Damon Tigner, Oneida Baptist, 6'6
2. Chris Richard, West Hopkins, 6'6
3. David Dewar, Oneida Baptist, 6'4
4. Jason Haagan, Kentucky Country Day, 6'2
5. Tim Binkley, Crittenden County, 6'0
6. Chris Grey, Danville, 6'0

##### Boys' Class A Team Totals

Danville	62.50
Murray	36.00
Mayfield	33.00
Fulton County	30.00
Dayton	28.00
Oneida Baptist	26.00
Ludlow	24.00
Newport Central Catholic	22.00
Somerset	20.00
Cordia	19.00
Harlan	18.00
Bellevue	16.00
Todd County Central	15.00
Providence	14.00
Lexington Catholic	11.00
Edmonson County	10.00
Kentucky Country Day	10.00
Pikeville	10.00
Walton Verona	10.00
Berea	8.00
Bremen	8.00
Russellville	8.00
West Hopkins	8.00
Elkhorn City	6.00
Frankfort	6.00
Nicholas County	6.00
Carroll County	4.00
Cumberland	4.00
Cumberland County	4.00
Hancock County	4.00
Raceland	4.00
Williamsburg	4.00
Allen Central	2.00
Lloyd Memorial	2.00
Crittenden County	1.50
Everts	1.00
Paris	1.00

**FORT CAMPBELL HIGH SCHOOL - CLASS AA GIRLS**  
**Kentucky High School Track Meet**  
**Lexington, Kentucky - May 26, 1990**



**FRONT ROW (L-R):** Devail Love, Melinda Goodman, Keke Wilson, Stephani Moore, Lanza Stephens.  
**BACK ROW:** Jovonda Brunt, Alison Howard, Shamese Rutherford, Sylvia Morend.

**Class AA**

**Girls' 100 Meter High Hurdles**

1. Stephanie Moore, Ft. Campbell, 12:45
2. Natasha Waitis, Owensboro, 16:23
3. Mindy Hall, Mason County, 16:42
4. Tasha Pearsall, Ft. Knox, 16:43
5. Holly Townsend, Webster County, 16:47
6. Jennifer Pollitt, Fleming County, 16:89

**Girls' 100 Meter Dash**

1. Philana Sibley, Union County, 12:45
2. Lanza Stephens, Ft. Campbell, 12:53
3. Kisha Nelson, Paul Blazer, 12:78
4. Priscilla Wethington, Casey County, 12:90
5. Megan Viox, Conner, 13:02
6. Shaundra Smith, Owensboro, 13:04

**Girls' 200 Meter Relay**

1. Ft. Campbell, 1:44.01
2. Warren East, 1:48.55
3. Casey County, 1:50.8
4. Conner, 1:50.7
5. Paul Blazer, 1:51.1
6. Corbin, 1:53

**Girls' 1600 Meter Run**

1. Ginger Watkins, Franklin County, 5:23
2. Natalie Ford, Fleming County, 5:29.1
3. K. Edwards, Warren East, 5:29.5
4. Scarlett Haley, Russell, 5:30.9
5. Tressa Tyler, Trigg County, 5:44.2
6. Michelle Bumpous, Western Hills, 5:48.8

**Girls' 400 Meter Relay**

1. Ft. Campbell, 48:60
2. Union County, 48:70
3. Conner, 51:83
4. Ft. Knox, 51:07
5. Casey County, 52:48
6. Dixie Heights, 52:55

**Girls' 400 Meter Dash**

1. Alison Howard, Ft. Campbell, 57:89
2. Kisha Nelson, Paul Blazer, 58.8
3. Amy Bond, West Carter, 1:00.2
4. Niky Gilmore, Oldham County, 1:00.3
5. Tomeka Thompson, Paducah Tighman, 1:02.1
6. Veronica Brown, Ft. Knox, 1:02.7

**Girls' 300 Meter Low Hurdles**

1. Michelle Harris, Paducah Tighman, 47:26
2. Jennifer Pollitt, Fleming County, 49:37
3. Donna King, South Oldham, 49:61
4. Stacy Bottom, Russell County, 49:64
5. Melissa Wren, Boyle County, 50:3
6. Mary Jo Smith, Corbin, 51:0

**Girls' 800 Meter Run**

1. Adenne John, Paul Blazer, 2:23.6
2. Holly Townsend, Webster County, 2:27.4
3. Natalie Ford, Fleming County, 2:29.7
4. Michale Bumpous, Western Hills, 2:34.7
5. Harmony Olsen, Owensboro, 2:38.6
6. Bridget Foley, Elizabethtown, 2:37.8

**Girls' 200 Meter Dash**

1. Melinda Goodman, Ft. Campbell, 25:30
2. Philana Sibley, Union County, 25:86
3. Kisha Nelson, Paul Blazer, 26:39
4. Megan Viox, Conner, 26:84
5. Lynette Gosser, Russell County, 27.2
6. Priscilla Wethington, Casey County, 27.3

**Girls' 3200 Meter Run**

1. Kristin Edwards, Warren East, 11:56.7
2. Phiona Watkins, Franklin County, 12:06.7
3. Melissa Simms, Russell, 12:23.6
4. Chrissy Cahill, Dixie Heights, 12:42.6
5. Michele Bumpous, Western Hills, 12:46.8
6. Antoinette Mayes, Trigg County, 13:02.6

**Girls' 1600 Meter Relay**

1. Paducah Tighman, 4:03.4
2. Ft. Campbell, 4:06.9
3. Ft. Knox, 4:07.9
4. Paul Blazer, 4:15.8
5. Dixie Heights, 4:21
6. Oldham County, 4:22.2

**Girls' Shot Put**

1. Tanya Bedford, Newport, 32'5
2. Tammy Proffitt, Corbin, 32'0
3. Tonya Brumley, Clay County, 31'3.5
4. Lisa Phillips, Lurie County, 31'1.5
5. G. Sells, Logan County, 30'9
6. Robin Fryman, Bourbon County, 30'5.5

**Girls' Discus**

1. Cynthia Garland, Calloway County, 112'5
2. Ange Smith, Western Hills, 108'9
3. Helen Johnson, Paducah Tighman, 97'8
4. Joy Bubenzner, Dixie Heights, 92'9
5. Sandy Corn, Anderson County, 92'3
6. Sonja Downey, East Hardin, 90.3

**Girls' Long Jump**

1. Lisa Hockensmith, Mercer County, 18.8-25
2. Dee Dee Adams, Lawrence County, 16'9
3. Alison Howard, Ft. Campbell, 16'6-25
4. Anita Purefoy, Paducah Tighman, 16'4-25
5. Hope Smith, Paul Blazer, 15'9
6. Demetrus Tutt, Owensboro, 15'7-25

**Girls' High Jump**

1. Philana Sibley, Union County, 5'4
2. Cathy Barnes, Harrison County, 5'3
3. Glenn Easterly, Russell, 5'2
4. Detra Daugherty, Mercer County, 4'10
4. Stacy Bottom, Russell County, 4'10
6. Angie Stuart, Anderson County, 4'8

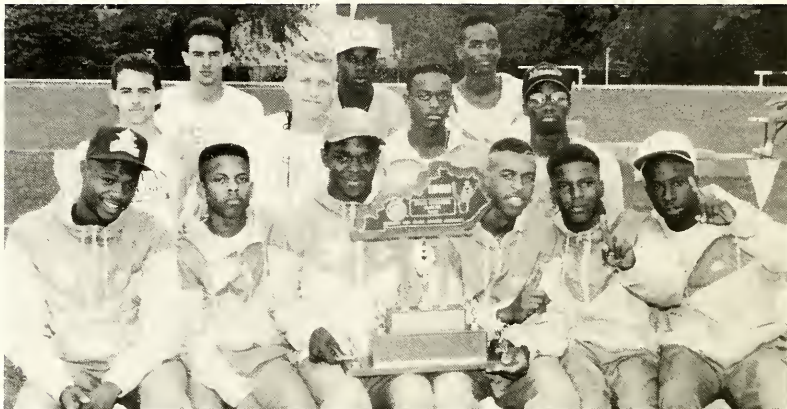
**Girls' Class AA Team Totals**

Ft. Campbell	72.00
Paul Blazer	38.00
Union County	36.00
Paducah Tighman	32.00
Warren East	24.00
Fleming County	23.00
Franklin County	18.00
Conner	16.00
Russell	16.00
Ft. Knox	15.00
Western Hills	15.00
Casey County	13.00
Mercer County	13.00
Owensboro	12.00
Dixie Heights	11.00
Calloway County	10.00
Corbin	10.00
Newport	10.00
Webster County	10.00
Russell County	9.00
Harrison County	8.00
Lawrence County	8.00
Clay County	6.00
Mason County	6.00
South Oldham	6.00
West Carter	6.00
Oldham County	5.00
Larue County	4.00
Anderson County	3.00
Trigg County	3.00
Boyle County	2.00
Logan County	2.00
Bourbon County	1.00
East Hardin	1.00
Elizabethtown	1.00

## FORT CAMPBELL HIGH SCHOOL - AA BOYS

### Kentucky High School Track Meet

### Lexington, Kentucky - May 26, 1990



**FRONT ROW (L-R):** Tory Flowers, Kenny Young, Jo Vanie Marshall, Bobby Spann, Nino Mora, Augustus Dicks. **SECOND ROW:** Jef Scott, John Tenbrink, Carlos Rice, Bino Edwards. **THIRD ROW:** James Scott, Robert Lindsay, Kendrix Jefferson, Davie Wright.

#### Class AA

##### Boys' 110 Meter High Hurdles

1. Nino Mora, Ft. Campbell, 14.67
2. Brent Canedy, Corbin, 14.73
3. Deron Walker, Ft. Knox, 15.36
4. Tyrone Warlow, Warren East, 15.50
5. Andrew McNeill, Mason County, 15.67
6. George Anglin, Ca-wood, 15.70

##### Boys' 100 Meter Dash

1. Lewis Ridgeway, Paducah Tilghman, 11.05
2. Jabbar Popkin, Monroe County, 11.08
3. James Grant, Ft. Knox, 11.17
4. Tim Hickman, Corbin, 11.28
5. Mark Porter, Harrison County, 11.43
6. Paul Grenidge, Western Hills, 11.44

##### Boys' 1600 Meter Run

1. Jeff Scott, Ft. Campbell, 4:28.33
2. James Scott, Ft. Campbell, 4:29.03
3. Marty Shelton, South Oldham, 4:29.73
4. Cleve Eldridge, Anderson County, 4:29.93
5. Dave McGee, Covington Catholic, 4:34.7
6. Jason Renfrow, Western Hills, 4:38.0

##### Boys' 400 Meter Relay

1. Ft. Campbell, 43.09
2. Ft. Knox, 43.13
3. Paducah Tilghman, 43.58
4. Western Hills, 44.49
5. Harrison County, 44.82
6. Conner, 44.8

##### Boys' 400 Meter Dash

1. Kyle Beasmore, Scott, 50.42
2. Kevin Harris, Paducah Tilghman, 50.59
3. Augustus Dicks, Ft. Campbell, 51.31
4. Donnell Gordon, South Oldham, 51.39
5. Mike Bessier, Covington Catholic, 51.69
6. Rudolph Green, Ft. Knox, 51.8

##### Boys' 300 Meter Int. Hurdles

1. James Grant, Ft. Knox, 38.81
2. Nino Mora, Ft. Campbell, 38.80
3. Brent Canedy, Corbin, 39.49
4. Deron Walker, Ft. Knox, 39.7
5. Chris Hurt, Paul Blazer, 40.4
6. Tory Flowers, Ft. Campbell, 42.0

##### Boys' 800 Meter Run

1. Todd Johnson, Hart County, 1:59.15
2. James Scott, Ft. Campbell, 2:00.0
3. Dave McGee, Covington Catholic, 2:00.02
4. Jason Renfrow, Western Hills, 2:00.61
5. Clifford Smith, Elizabethtown, 2:00.9
6. Anthony Keeton, Rowan County, 2:01.3

##### Boys' 200 Meter Dash

1. Nino Mora, Ft. Campbell, 22.34
2. Tim Hickman, Corbin, 22.60
3. Teronnie Holmes, Paducah Tilghman, 22.63
4. David Johnson, Elizabethtown, 22.85
5. Mitch Hobbs, Oldham County, 22.88
6. Paul Grenidge, Western Hills, 22.97

##### Boys' 3200 Meter Run

1. Jeff Scott, Ft. Campbell, 9:44
2. Joey Bowman, Franklin County, 9.45
3. J. F. Huntley, Western Hills, 9:54.9
4. James Scott, Ft. Campbell, 10:00.1
5. Jeff Harris, Elizabethtown, 10:12.3
6. Tate Dillow, Russell, 10:22.1

##### Boys' 1600 Meter Relay

1. Ft. Knox, 3:25.72
2. Ft. Campbell, 3:28.48
3. Bourbon County, 3:30.59
4. Paducah Tilghman, 3:30.93
5. Covington Catholic, 3:32.2
6. Owensboro, 3:32.3

##### Boys' Shot Put

1. Gregg Deaves, Oldham County, 49'11"
2. Scottie Hines, Rockcastle County, 48'9.5"
3. Tommy Simmons, Barren County, 46'1"
4. Shawn Stephens, Russell County, 45'7"
5. Barry Jones, Covington Catholic, 44'8.5"
6. Marvin Mullins, Boyle County, 44'7.5"

##### Boys' Discus

1. Tommy Simmons, Barren County, 152'9"
2. Jason Knotts, East Hardin, 147'7"
3. Brian Williams, Covington Catholic, 147'4"
4. Ty Corbin, Green County, 144'0"
5. Dan Ford, Warren East, 139'11"
6. Marvin Mullins, Boyle County, 139'10"

##### Boys' Pole Vault

1. Mitch Hobbs, Oldham County, 15'1"
2. Brad Maynard, Barren County, 14'0"
3. Eric Best, Simon Kenton, 12'6"
4. Rickey Lynn, Barren County, 12'0"
5. Jeremy French, Mason County, 12'0"
6. Sam Neudauer, South Oldham, 10'8"
6. Anthony Gilbert, Leslie County, 10'6"

##### Boys' Triple Jump

1. Gracie Johnson, Paducah Tilghman, 44'9.50
2. Chazz Lewis, Ft. Knox, 43'4.50
3. Eugene Seals, Middlesboro, 42'11.50
4. Bryan Reed, Conner, 42'11.25
5. Jason Lee, Lurie County, 42'6"
6. Scott Young, Barren County, 41'2.75

##### Boys' Long Jump

1. Marcus Dixon, Union County, 21'9.75"
2. John Harrell, Warren East, 21'9.75"
3. Willie Lewis, West Carter, 21'7"
4. Tad Hatfield, Owensboro, 21'3.5"
5. John Eldridge, Grant County, 21'2.5"
6. Eugene Seals, Middlesboro, 20'11.25"

##### Boys' High Jump

1. Paul Akers, Morgan County, 6'10"
2. Tyrone Warlow, Warren East, 6'4"
3. Adam Nagier, Simon Kenton, 6'4"
4. Stanton Zackery, Barren County, 6'0"
5. Eugene Seals, Middlesboro, 6'0"
6. Jason Lee, Lurie County, 6'0"

##### Boys' Class AA Team Totals

Ft. Campbell	93.00
Ft. Knox	53.00
Paducah Tilghman	44.00
Barren County	33.00
Corbin	26.00
Oldham County	22.00
Warren East	22.00
Covington Catholic	20.00
Western Hills	17.00
Simon Kenton	12.00
South Oldham	10.50
Hart County	10.00
Morgan County	10.00
Scott	10.00
Union County	10.00
Middlesboro	9.00
East Hardin	8.00
Elizabethtown	8.00
Franklin County	8.00
Monroe County	8.00
Rockcastle County	8.00
Bourbon County	6.00
West Carter	6.00
Conner	5.00
Owensboro	5.00
Anderson County	4.00
Green County	4.00
Harrison County	4.00
Mason County	4.00
Russell County	4.00
Larue County	3.00
Boyle County	2.00
Grant County	2.00
Paul Blazer	2.00
Ca-wood	1.00
Rowan County	1.00
Russell	1.00
Leslie County	0.50

**NOTICE ON EXPERIMENTAL BASKETBALL RULE**

The National Federation Basketball Rules Committee, at its March meeting, approved several rules changes which could be implemented by individual states on an experimental basis.

At its April meeting, the K.H.S.A.A. Board of Control was asked to solicit opinions from the basketball coaches in their area on a few proposed changes. The first would revise the bonus free throw provisions; while the second would count all technical and personal fouls toward the bonus provisions and toward disqualification. After discussing these changes with many of their constituents, the Board of Control approved Kentucky's experimentation with these changes for the 1990-91 school year.

In detail, these experimental changes are as follows --

- 1) The current bonus free throw provision, one plus one on and after the fifth team foul of the half, is eliminated. In its place, all fouls, personal and technical, committed by a player on and after the seventh (7th) foul of a half shall result in the offended team being awarded two free throws.
- 2) All technical and personal fouls called against a player shall be counted toward the limit of five fouls per player prior to disqualification.
- 3) All technical and personal fouls called against a player or coach shall be counted toward the limit of fouls per half before the two shot provision.

These rules will be in effect for ALL games played in the state of Kentucky for the 1990-91 season. In late January, we will survey the coaches to get an opinion about the change, and Mr. Wise will take this information to the National Rules Committee meeting in March for discussion. If you are playing an out of state team on their home floor, you will need to check with that team to ascertain if that state is utilizing the same experiment.

**SPECIAL NOTICE TO MEMBER SCHOOLS CONCERNING THE TRANSFER RULE**

Several times already during this young school year, member schools have submitted transfer requests on the day of the contest. We will try and accommodate these requests when possible. However, one recent change in the By-Laws has apparently escaped the attention of many coaches. A student athlete may not practice or play with a team until ruled eligible by the Commissioner. In football, this means it is not possible for a player to become eligible and play on the same day because he/she would not ten (10) days of practice in pads.

**SPECIAL NOTE CONCERNING BASKETBALL RULES CLINICS**

The basketball clinic originally scheduled for October 1 at Somerset High School has been moved to Monday, October 29; while the clinic set for October 2 at Pineville High School has been moved to Tuesday, October 30. This is to allow Mr. Wise to attend the National Basketball Rules Committee meeting in Kansas City on October 1 and 2, and also enable him to conduct the clinics at Somerset and Pineville. Notice concerning this change was made in the August Athlete magazine, and in the notices to the officials. Please ensure that your coaches are aware of this change.

**NOTE CONCERNING BASKETBALL AND FOOTBALL RATINGS**

The K.H.S.A.A. recently purchased electronic equipment which allows for the entry of the ratings from coaches into the computer system via scanner. The results thus far have been very good, with a couple of points needing to be made to coaches at this time.

ONE - Always use a #2 lead pencil when completing the form.

TWO - PLEASE do not fold the form, other than to place it in an envelope. Also, be sure that you are not sealing the envelope to the form when you close the envelope for mailing. We have received forms folded to fit in a very small envelope, and many of these forms are not able to be scanned. Please use a #10 (letter size) envelope for mailing these forms, and MAIL THEM IMMEDIATELY FOLLOWING EACH CONTEST.

**HANDBOOK CORRECTIONS**

A mistake in communication between this office and our printer resulted in the mis-identification of our Sectional Directors on page iii when the new Handbook was printed. The Sectional Director for Regions 13-16 is John Radjunas, and he is pictured immediately next to Harry Loy, our State Department of Education liaison. The bottom row, from left to right, is Jack Wise (Regions 9-12), Jerry Kimmel (Regions 1-4), and George Mercker (Regions 5-8). We apologize to the Sectional Directors and to any others who may have been caused inconvenience by this error.

An important correction should be made on page 16, under By-Law 25, Limitation of Seasons, Section 4b, Football - Boys (Beginning with the 1991-92 school year). An error in translating the 1987-1990 information into the new alignment period left an inadvertent error in subsection 4, of Section 4b. The corrected wording should be --

- (4) A maximum of ten (10) regular season games may be played. Pre-season bowl games shall count towards the ten game limit.

This is the wording as each of the schools were notified in the spring, however, during composition of the handbook, the wording for 1991-94 was not changed concerning pre-season bowl games. We apologize for any inconvenience this error may have caused.

## TENTATIVE 1990-91 CLINIC SCHEDULE

Schools and officials are reminded of the Clinic Attendance Requirement for Officials in Football, Soccer, Volleyball, Basketball, Wrestling, Baseball and Track. If any date changes from that listed herein, each official and school will be notified.

### Basketball

(all clinics begin at 7:00 p.m.)  
10/3 Hazard, Dilce Combs H.S.  
10/4 Prestonsburg, Prestonsburg H.S.  
10/3 Hazard, Dilce Combs H.S.  
10/4 Prestonsburg, Prestonsburg H.S.  
10/8 Morehead, Rowan County H.S.  
10/9 Ashland, Ashland Community College  
10/10 Maysville, Mason County H.S.  
10/11 Northern Kentucky University  
10/15 Owensboro, Apollo H.S.  
10/16 Mayfield, Graves County H.S.  
10/17 Hopkinsville, Hopkinsville H.S.  
10/18 Bowling Green, Bowling Green H.S.  
10/22 New Castle, Henry County H.S.  
10/23 Elizabethtown, Elizabethtown H.S.  
10/24 Louisville, Durrett Education Center

10/25 Lexington, Henry Clay H.S.  
10/29 Somerset, Somerset H.S.  
10/30 Pineville, Bell County H.S.

### Wrestling

10/27 Hopkinsville, Christian County, 1:00 P.M.  
11/3 Northern Kentucky, Conner, 1:00 P.M.  
11/10 Frankfort, 1:00 P.M.  
11/20 Louisville, KY School f/t Blind, 7:00 P.M.

### Softball and Baseball

2/4 Lexington, Henry Clay H.S., 6:00 P.M.  
2/5 Covington, Holmes H.S., 6:00 P.M.  
2/6 Ashland, Paul Blazer H.S., 6:00 P.M.  
2/7 Pikeville, Pikeville H.S., 6:00 P.M.  
2/11 London, Laurel County H.S., 6:00 P.M.  
2/12 Bowling Green, Bowling Green H.S., 6:00 P.M.  
2/13 Hopkinsville, U.K. Comm. College, 6:00 P.M.  
2/14 Louisville, Atherton H.S., 6:00 P.M.  
2/18 Maysville, Mason County H.S., 7:00 P.M.

### Track

The track clinic schedule has not been finalized. Attempts are being made to incorporate additional clinic sites into the schedule. When the final schedule is available, all registered officials and participating schools will be notified.

## REMINDER TO SCHOOLS CONCERNING LIMITATION OF SEASONS

All schools are reminded of the Limitation of Seasons Rules, K.H.S.A.A. By-Law 27, as it applies to competition after the conclusion of the regular season. ALL SPORTS are affected by this rule, which states that following the teams' last regular season match, there shall be no further practice or play as a team for the remainder of the school year, with the exception of the K.H.S.A.A. tournament. Please be sure your coaches are aware of this important rule, and that they are not involved in coaching the team in an outside league, or other competition. For the high school coach, be they the Head Coach or an assistant coach, to coach members of the high school team in a league outside of the school's legal regular season competition, regardless of the type of league, would be a violation of the rules governing the Limitation of Seasons.

## OPEN DATES SOLICITED FOR FOOTBALL SCHOOLS

Please submit your open football dates to the K.H.S.A.A. office so that we may again compile a list to assist you in scheduling. Please submit these open dates in writing and include 1) the game date desired, and 2) a contact name and daytime phone number. This is especially important as we begin scheduling for next year with the alignment changes. Football Schools Open Date Listing - August 10, 1990

**October 05** -- Allen Central, Bath County, Belfry, Breathitt County, Breckinridge County, Caverna, Hancock County, Harrison County, Magoffin County, Mayfield, Ohio County, Paris, Rockcastle County, Russell County, Shelby Valley, Somerset, Webster County, Wheelwright

**October 12** -- Apollo, Cumberland, East Carter, Elkhorn City, Harlan, Hazard, Larue County, McCreary Central, Millersburg Military Institute, Phelps, Wayne County, Whitesburg

**October 19** -- Casey County, Fulton City, Garrard County, Logan County, Magoffin County, Morgan County, Murray, Pulaski County, South Hopkins

**October 26** -- Bullitt East, Campbell County, Kentucky School f/t Deaf, Larue County, Marshall County, Paul Dunbar

**November 02** -- Adair County, Ballard Memorial, Bath County, Bowling Green, Boyd County, Bryan Station, Butler County, Campbellsville, Carroll County, Casey County, Caverna, Corbin, Crittenden County, Dayton, Edmonson County, Eminence, Evarts, Fairview, Fleming County, Fleming-Neon, Fort Campbell, George Rogers Clark, Glasgow, Green County, Harlan, Harrodsburg, Hazard, Henry Clay, Henry County, Highlands, Johns Creek, Laurel County, Leslie County, Lone Oak, Ludlow, M.C. Napier, Madison Central, Madisonville-North Hopkins, Magoffin County, Marion County, Mason County, Metcalfe County, Middlesboro, Millersburg Military Institute, Monroe County, Montgomery County, Muhlenberg South, Owensboro Catholic, Paintsville, Paul Blazer, Phelps, Pikeville, Raceland, Russell, Russellville, Scott, Shelby County, Somerset, Tates Creek, Todd County Central, Union County, West Carter

## CALL THE OFFICE IF YOU NEED MORE INFORMATION ON THE COURT OF SUPPORT

In the past few days, you should have received information about the Court of Support as we attempt to raise funds for the building of our new headquarters. The program is inexpensive enough to allow all of the Association constituencies to participate. Please take advantage of this opportunity to not only invest in the future of your Association, but to have your name immortalized forever with this project.

### S.A.T. TEST DATES FOR 1990-91

The S.A.T. test schedule for the near future is as follows:

TEST DATE	REG. DEADLINE
11/03/90	09/28/90
12/ 1/90	10/26/90
01/26/91	12/21/90
03/16/91	02/08/91
05/04/91	03/29/91
06/ 1/91	04/26/91

Athletic Directors and school officials should pay special attention to these dates and encourage your athletes to schedule their test dates away from potential conflicts with district, regional or state athletic events.

### OPEN DATES FOR BASKETBALL SCHOOLS

Please submit your open basketball dates to the K.H.S.A.A. office so that we may again compile a list to assist you in scheduling. Please submit these open dates in writing and include 1) the game date desired, and 2) a contact name and daytime phone number. The following games have been requested --

**Christian County Boys**, November 30, December 11, December 18, and December 21, 1990, and January 29 and February 21, 1991, Contact Lyle Dunbar, (502)887-1116;

**Elizabethtown Boys**, January 4, and February 15, 1991. Contact Gary French, (502)769-3381;

**Fort Campbell Boys**, January 18, January 29 and February 15, 1991, Contact Mickey Fischer, (615)431-5056;

**George Rogers Clark Boys**, December 21, January 4, January 18, February 5. Contact Coach Ken Trivette, (606)432-2636, or (606)278-6975;

**Harrodsburg Boys**, needs a team in the McDonalds' Classic, December 6-8. Contact Alvis Johnson, (606)734-7118, or Greg Edwards, (606)734-9089;

**Madison Central Boys**, January 4, January 11, and January 18, 1991, Contact Ken Roberts (606)623-1530, or (606)623-6072;

**Mater Dei (Breese, IL)**, December 26-29, a sixteen team, double elimination tournament for boys' teams, needs two teams, contact Dennis Trame or Curt Winter (618)526-7216;

**Maysville**, January 18, Contact Steve Appleman, (606)564-5456, or (606)564-9210.;

**Russell Girls**, January 10 and January 14, 1991, contact Jerry Klaiber, A.D., (606)836-0369; Russell is also interested in playing in a holiday tournament, contact Mr. Klaiber for details;

**Scott Boys (Covington)**, November 26, 1990 needs a team for a Tip Off Tournament. Other dates available, contact Ken Mueller, (606)356-3146 or (606)525-0795.

### FUTURE OPEN DATES FOR FOOTBALL SCHOOLS

Please submit your open basketball dates to the K.H.S.A.A. office so that we may again compile a list to assist you in scheduling. Please submit these open dates in writing and include 1) the game date desired, and 2) a contact name and daytime phone number. The following games have been requested --

**Providence (IN)** - September 13, 1991 approximately 515 students, contact Bob Fields, A.D., (812)945-2538.

**Ironton (OH)** - September 27, 1991, September 25, 1992, and October 30, 1992, contact Mike Burcham, A.D., (614)532-5235.

**Marion County (KY)** - August 30, October 4, October 18 and November 1, 1991. Contact Sam Simpson (502)692-6066

### A.C.T. TEST DATES FOR 1990-92

The A.C.T. test schedule for the near future is as follows:

TEST DATE	REG. DEADLINE	LATE DEADLINE
10/27/90	09/28/90	10/15/90
12/ 8/90	11/9/90	11/26/90
02/ 9/91	01/11/91	01/28/91
04/13/91	03/15/91	04/ 1/91
06/ 8/91	05/10/91	05/24/91
10/26/91	09/27/91	10/11/91
12/14/91	11/15/91	12/ 2/91
02/ 8/92	01/10/92	01/27/92
04/11/92	03/13/92	03/30/92
06/13/92	05/15/92	06/01/92

Athletic Directors and school officials should pay special attention to these dates and encourage your athletes to schedule their test dates away from potential conflicts with district, regional or state athletic events.

### SPORTSCHANNEL TELECASTS ST. XAVIER/TRINITY FOOTBALL GAME

SportsChannel America is originating a live nationwide telecast of the September 28th contest between traditional football powers St. Xavier and Trinity in Louisville. This is one of eight nationally telecast games this year, under the second year of the SportsChannel contract with the National Federation. Congratulations to the Tigers and the Shamrocks.

## IMPORTANT NOTICE CONCERNING DISQUALIFICATIONS

By Board of Control action, all participants and/or coaches who are ejected from a contest for unsportsmanlike conduct shall be suspended from competition for a minimum of one game.

It also should be noted that officials who disqualify participants, and then do not report that disqualification to the Association office in a timely manner may face suspension from officiating!

With this in mind, it is important to adhere to the following procedure should a representative of your school be ejected for unsportsmanlike conduct. 1) Be sure you receive a disqualification card from the contest official; 2) Contact this office in writing to request reinstatement of the participant; 3) Inform the participant/coach of the suspension. You will be notified by return mail as to the end of the suspension, and the date or day when the player/coach will be eligible to return to competition. Contest officials also are reminded to use an ink pen, to include the first and last name of the offender, and to press hard as the third copy is often illegible if done in pencil.

\*NOTE\* Any person who is suspended from a contest may not dress for that contest in game uniform. They will however be covered by the catastrophic insurance policy insofar as practice is concerned unless you are otherwise notified.

## AMY DODRILL SELECTED DREAMER AND DOER

Amy Dodrill of Prospect was named Kentucky's Dreamer and Doer following a meeting of the State Selection Committee in Lexington on May 10. Chris Manus of Williamsburg was named runner-up. Walt Disney World National Dreamers and Doers is a student recognition program co-sponsored by the National Federation of State High School Associations and administered in Kentucky by the K.H.S.A.A.

Students are honored for their participation in interscholastic activity programs and demonstration of the 4 C's, curiosity, confidence, courage and constancy, which are the cornerstones of the program.

All of the State Dreamer and Doer winners were honored with an expense paid, multi day educational event and award ceremony, August 15-18, at Walt Disney World Resort in Orlando.

## KENTUCKY ATHLETIC TRAINERS SOCIETY ANNOUNCES SCHOLARSHIP WINNER

Mr. Brian Ball, a senior at Belfry High School, is the 1990 recipient of the Tom Simmons Athletic Training Scholarship. The scholarship is awarded by the Kentucky Athletic Trainers Society in honor of Tom Simmons, Athletic Trainer Emeritus of Murray State University. Mr. Ball was selected based on his academics, his work as Athletic Training and other related activities. Mr. Ball will be attending the University of Kentucky in the fall, and working in the Athletic Training program.

## FOOTBALL CORRESPONDING DATES

Due to the passage of a referendum to shorten the season, the re-negotiation of many contracts due to the 1991 realignment, and the expansion of the playoffs to four teams beginning in 1991, many schools are confused about the possible playing dates for football games. Below is listed the updated corresponding date chart as it will appear in the 1990-91 Handbook.

Also, by virtue of Delegate Assembly action in 1990, no games may be scheduled or played at any level following the Saturday of the week preceding the First Round of the playoffs.

	1990	1991	1992	1993	1994	1995
FINALS	11/30	12/6	12/4	12/3	12/2	12/1
SEMI-FINALS	11/23	11/29	11/27	11/26	11/25	11/24
REGION	11/16	11/22	11/20	11/19	11/18	11/17
SECOND ROUND	11/9	11/15	11/13	11/12	11/11	11/10
FIRST ROUND **	11/2	11/8	11/6	11/5	11/4	11/3
Week 10	10/26	11/1	10/30	10/29	10/28	10/27
Week 9	10/19	10/25	10/23	10/22	10/21	10/20
Week 8	10/12	10/18	10/16	10/15	10/14	10/13
Week 7	10/5	10/11	10/9	10/8	10/7	10/6
Week 6	9/28	10/4	10/2	10/1	9/30	9/29
Week 5	9/21	9/27	9/25	9/24	9/23	9/22
Week 4	9/14	9/20	9/18	9/17	9/16	9/15
Week 3	9/7	9/13	9/11	9/10	9/9	9/8
Week 2	8/31	9/6	9/4	9/3	9/2	9/1
Week 1	8/24	8/30	8/28	8/27	8/26	8/25
**	8/17	(For 1990 season only)				

\*\* Due to passage of a referendum which shortened the football season to ten weeks, there are no regular season playing dates which correspond to August 17 or November 2, 1990. The November 2 date will be lost due to the expansion of the playoffs to include the top four teams in each district. It is important to remember that beginning in 1991, there will be only ten (10) weeks in which to play the legal limit of ten (10) games.

**BALLARD HIGH SCHOOL - CLASS AAA GIRLS**  
**Kentucky High School Track Meet**  
**Lexington, Kentucky - May 26, 1990**



**FRONT ROW (L-R):** Tammy Brown, Christie Sledge, Kim Graves, Coach Marcia Merton, Tanya Clay, Michelle Hapner. **SECOND ROW:** Holly Currey, Ingrid Payne, Vickie Jordan, Kay Madrick, Danielle Stigger. **THIRD ROW:** Raleigh Hill, Tricie Baker, Amy Middleton, Neilia Lanshe.

**Class AAA**

**Girls' 100 Meter Hurdles**

1. Alisa DeHaven, Moore, 15.87
2. Caroline Shively, Davess County, 16.19
3. Gretchen Enyart, Henderson County, 16.19
4. Carmalita Givens, Tates Creek, 16.45
5. Audrey Nash, Henry Clay, 16.46
6. Valerie West, Pleasure Ridge Park, 16.62

**Girls' 100 Meter Dash**

1. Ericka Muncy, Bryan Station, 12.81
2. Lisa Brown, Central, 12.66
3. Maisha Thomas, George Rogers Clark, 12.71
4. Kim Cunningham, Shelby County, 12.72
5. Cherrod Pate, Davess County, 12.79
6. Tracy Folden, Henderson County, 12.86

**Girls' 800 Meter Relay**

1. Ballard, 1:44.89
2. Henderson County, 1:45.11
3. George Rogers Clark, 1:45.6
4. Eastern, 1:46.72
5. Iroquois, 1:46.81
6. Bowling Green, 1:47.4

**Girls' 1600 Meter Run**

1. Michelle Marshall, Boone County, 5:13.4
2. Emily Roebel, Notre Dame, 5:23.4
3. Mandy Jones, Pulaski County, 5:28.5
4. Julie Roberts, Pulaski County, 5:32.0
5. Megan Newcomb, Nelson County, 5:33.1
6. Stephanie Filappazzo, Doss, 5:47.7

**Girls' 400 Meter Relay**

1. Valley, 49.22
2. Iroquois, 49.04
3. Henderson County, 49.85
4. Eastern, 50.75
5. George Rogers Clark, 50.82
6. Waggener, 51.80

**Girls' 400 Meter Dash**

1. Ericka Muncy, Bryan Station, 57.39
2. Christi Sledge, Ballard, 57.49
3. Rita Owens, Bowling Green, 57.8
4. Daria Butler, Scott County, 1:05.9
5. Angie Rohrschab, Davess County, 1:05.9
6. Tammy Brown, Ballard, 1:05.9

**Girls' 300 Meter Low Hurdles**

1. Tasha Wilbers, Valley, 46.40
2. Rhonda Rattler, Doss, 48.90
3. Kay Creech, Laurel County, 46.97
4. Gretchen Enyart, Henderson County, 48.60
5. April Miller, Saneaca, 46.66
6. Carolyn Hobbs, Notre Dame, 46.69

**Girls' 800 Meter Run**

1. Angie Rohrschab, Davess County, 2:21.0
2. Tonya Clay, Ballard, 2:22.0
3. Sandra Shaw, Shelby County, 2:25.5
4. Daria Butler, Scott County, 2:28.1
5. Rhonda Rattler, Doss, 2:30
6. Amy Darst, Marshall County, 2:30.4

**Girls' 200 Meter Dash**

1. Ericka Muncy, Bryan Station, 25.22
2. Shandy Boyd, Valley, 25.42
3. Rita Owens, Bowling Green, 25.73
4. Christi Sledge, Ballard, 25.80
5. Kim Cunningham, Shelby County, 26.02
6. Lisa Brown, Central, 26.06

**Girls' 3200 Meter Run**

1. Michelle Marshall, Boone County, 11:30.6
2. Kara Howell, Warren Central, 11:49.2
3. Kelly Kuzar, Presentation, 11:49.6
4. Mandy Jones, Pulaski County, 12:36.9
5. Ada Travsted, Warren Central, 12:49.1
6. Amy Smith, Pulaski County, 13:04.1

**Girls' 1600 Meter Relay**

1. Ballard, 3:59.9
2. Henderson County, 4:08.5
3. Jessamine County, 4:12.2
4. Shawnee, 4:15.3
5. Eastern, 4:16.1
6. Davess County, 4:19.4

**Girls' Shot Put**

1. Tasha Phelps, Christian County, 36'4
2. Danielle Leonard, Davess County, 35'10
3. Carmen Westfield, Tates Creek, 33'10
4. Danielle Ruffin, Jeffersontown, 33'5
5. Geri Johnson, Shawnee, 32'1
6. Tammy Haynes, Holy Rosary, 33'0

**Girls' Discus**

1. Tina Phelps, Pulaski County, 107'3
2. Danielle Leonard, Davess County, 103'2
3. Julie Wilkinson, Eastern, 99'9
4. Sue Finnels, Hopkinsville, 95'7
5. Amy Branham, Boyd County, 91'1
6. Artavia Marshall, Shelby County, 91'0

**Girls' Long Jump**

1. Shandy Boyd, Valley, 17'10
2. Maisha Thomas, George Rogers Clark, 17'8.75
3. Lori Collins, Eastern, 17'1.25
4. Ericka Muncy, Bryan Station, 16'9.5
5. Lisa Hayden, Henderson County, 16'8
6. Sherrie Jackson, Iroquois, 16'4.75

**Girls' High Jump**

1. Angie Johnson, Lafayette, 5'1
2. Ginger Smith, Henderson County, 5'0
3. Audrey Nash, Henry Clay, 5'0
4. Michele Hopner, Ballard, 5'0
5. Janna Smeal, Boone County, 5'0
6. Rene Meriwether, Male, 4'10

**Girls' Class AAA Team Totals**

Ballard	46.00
Henderson County	44.00
Davess County	38.00
Valley	36.00
Bryan Station	34.00
Pulaski County	25.00
Boone County	22.00
Eastern	22.00
George Rogers Clark	22.00
Bowling Green	13.00
Shelby County	13.00
Doss	11.00
Iroquois	11.00
Christian County	10.00
Lafayette	10.00
Moore	10.00
Tates Creek	10.00
Warren Central	10.00
Central	9.00
Notre Dame	9.00
Scott County	8.00
Henry Clay	7.00
Jessamine County	6.00
Laurel County	6.00
Presentation	6.00
Shawnee	6.00
Hopkinsville	4.00
Jeffersontown	4.00
Boyd County	2.00
Nelson County	2.00
Seneca	2.00
Holy Rosary	1.00
Male	1.00
Marshall County	1.00
Pleasure Ridge Park	1.00
Waggener	1.00



**EASTERN HIGH SCHOOL - CLASS AAA BOYS**  
**Kentucky High School Track Meet**  
**Lexington, Kentucky - May 26, 1990**



**FRONT ROW (L-R):** Richard Martin, Damon Lanier, Reggie Wilkins, Ramont Smith, Coach Judy Simpson. **SECOND ROW:** James Holman, Larry Menendez, Demond Butler, Charles McGhee, Cory Tyus, Coach Richard Reed and Nicholas Reed. **THIRD ROW:** Garry Adams, A.D. Tom Cheaney, Matt Satterly, Marcus Mozee, Aaron Edelson, Charley White, Brad Bryant.

**Class AAA**

**Boys' 110 Meter High Hurdles**

1. Carnell Whelan, Pleasure Ridge Park, 14.74
2. Tyrone Anthony, Bowling Green, 15.15
3. Steve Hampton, Knox Central, 15.31
4. George Higgins, Woodford County, 15.33
5. Edwin Chilton, Christian County, 15.41
6. Eric Voss, St. Xavier, 15.59

**Boys' 100 Meter Dash**

1. Reggie Wilkins, Eastern, 10.71
2. Derrick Gaines, Central, 10.89
3. Eric Curry, Apollo, 11.05
4. Chris Jackson, Woodford County, 11.08
5. Dan Hicks, Tates Creek, 11.09
6. Marlon Jones, Bowling Green, 11.15

**Boys' 1600 Meter Run**

1. Aaron Payne, Pulaski County, 4:25.3
2. David Bratcher, Holy Cross (Louisville), 4:26.7
3. Kenny Chandler, Warren Central, 4:28.4
4. Scott Williams, Jeffersonton, 4:33.2
5. Cory Grant, Valley, 4:33.4
6. Mike Sprano, Ballard, 4:35.2

**Boys' 400 Meter Relay**

1. Eastern, 42.92
2. North Harbin, 43.09
3. Woodford County, 43.55
4. Trinity (Louisville), 43.63
5. Central, 43.74
6. Valley,

**Boys' 400 Meter Dash**

1. Jermaine Stafford, Madisonville-N. Hopkins, 48.83
2. Dan Hicks, Tates Creek, 50.20
3. T.C. Payne, Valley, 50.44
4. Chris Jones, Bryan Station, 50.8
5. Butch Mosley, Male, 50.8
6. Jerome Royster, Henderson County, 50.7

**Boys' 300 Meter Int. Hurdles**

1. Bobby Lovell, Henderson County, 39.73
2. George Higgins, Woodford County, 39.79
3. John Rihard, Daviess County, 40.07
4. Steve Hampton, Knox Central, 40.67
5. Eric Voss, St. Xavier, 40.9
6. Danny Lile, Valley, 41.2

**Boys' 800 Meter Run**

1. John Baum, Holy Cross (Louisville), 1:59.15
2. Cory Grant, Valley, 1:59.99
3. Mike Campbell, Ballard, 2:00.18
4. Aaron Payne, Pulaski County, 2:01.7
5. Chuck Wolfram, Bowling Green, 2:02.0
6. Eric VonHollans, Madison Central, 2:02.7

**Boys' 200 Meter Dash**

1. Reggie Wilkins, Eastern, 21.75
2. Derrick Gaines, Central, 22.03
3. Jermaine Stafford, Madisonville-N. Hopkins, 22.28
4. Dan Hicks, Tates Creek, 22.40
5. Marlon Jones, Bowling Green, 22.41
6. William Cook, Bryan Station, 22.90

**Boys' 3200 Meter Run**

1. Aaron Payne, Pulaski County, 9:50.6
2. Bart Glenn, Warren Central, 9:50.7
3. Darrin Payne, Pulaski County, 10:01.2
4. Travis White, Holy Cross (Louisville), 10:02
5. Kenny Chandler, Warren Central, 10:10.7
6. Eric Vanlaningham, Boone County, 10:11.1

**Boys' 1600 Meter Relay**

1. Eastern, 3:21.7
2. Valley, 3:24.5
3. Bowling Green, 3:26.0
4. Henderson County, 3:28.2
5. Ballard, 3:28.8
6. Bryan Station, 3:29.5

**Boys' Shot Put**

1. Rich Turner, Campbell County, 50'8.5
2. Bryant Cosby, Waggener, 50'3
3. Owen Neal, DeSales, 48'4
4. Brian Richards, Iroquois, 47'11.5
5. Dale Payne, Henderson County, 47'11
6. Robert Murphy, Apollo, 47'10

**Boys' Discus**

1. Terry Jenkins, Fairdale, 157'8
2. Chris Andrews, Laurel County, 153'9
3. Travis Wheeler, Eastern, 145'0
4. Nick Pfeiffer, St. Xavier, 137'6
5. Mike Means, Campbell County, 133'10
6. Kris Robinson, Henderson County, 131'7

**Boys' Pole Vault**

1. Mike Claycomb, Daviess County, 14'0
2. Dan Grenough, Trinity (Louisville), 14'0
3. Greg Kraessig, St. Xavier, 13'0
4. Brian Salke, Trinity (Louisville), 12'6
5. Jeff Richards, Henderson County, 12'6
6. Skeeter Stokely, Scott County, 11'6

**Boys' Triple Jump**

1. Ricky Hancock, Henderson County, 45'8.25
2. Dante Lavender, Boone County, 45'7.5
3. Shawn Feachers, Hopkinsville, 44'8.5
4. Tony Bathel, Fairdale, 44'4
5. Lee Carey, Pleasure Ridge Park, 44'3.75
6. Dominco Cooper, Jessamine County, 43'9

**Boys' Long Jump**

1. Ricky Hancock, Henderson County, 23'6
2. Dewana Farrow, Madisonville-N. Hopkins, 22'4.75
3. Thomas Allen, Holmes, 21'8
4. Ramont Smith, Eastern, 21'5.75
5. Steve Green, Madison Central, 21'5.5
6. Frank Farmer, Jessamine County, 21'2.25

**Boys' High Jump**

1. George Higgins, Woodford County, 6'7
2. Barry McCarthy, Johnson Central, 6'4
3. Steve Hatfield, Fairdale, 6'4
4. Keith Schweitzer, St. Xavier, 6'4
5. Tyus Coey, Eastern, 6'2
6. Larry Lock, Warren Central, 6'0

**Boys' Class AAA Team Totals**

Eastern	52.00
Henderson County	40.00
Woodford County	32.00
Pulaski County	30.00
Valley	26.00
Madisonville-N. Hopkins	24.00
Holy Cross (Louisville)	22.00
Fairdale	20.00
Bowling Green Central	18.00
St. Xavier	17.00
Trinity (Louisville)	17.00
Warren Central	16.00
Daviess County	15.00
Tates Creek	14.00
Campbell County	12.00
Pleasure Ridge Park	12.00
Knox Central	10.00
Ballard	9.00
Boone County	9.00
Johnson Central	8.00
Laurel County	8.00
North Hardin	8.00
Waggener	8.00
Apollo	7.00
Bryan Station	6.00
DeSales	6.00
Holmes	6.00
Hopkinsville	6.00
Iroquois	4.00
Jeffersonton	4.00
Madison Central	3.00
Christian County	2.00
Jessamine County	2.00
Male	2.00
Scott County	1.00



# 1990 PROPOSED SOCCER ALIGNMENT

## REGION 1

**District 1**  
Heath  
Lone Oak  
Paducah Tilghman  
Reidland  
St. Mary

**District 2**  
Caldwell County  
Calloway County  
Marshall County  
Murray

**District 3**  
Christian County  
Fort Campbell  
Henderson County  
Hopkinsville  
Madisonville-North Hopkins  
University Heights

## REGION 2

**District 4**  
Apollo  
Daviness County  
Owensboro  
Owensboro Catholic

**District 5**  
Russellville  
Warren Central  
Warren East

**District 6**  
Bowling Green  
Glasgow  
Greenwood

**District 7**  
Central Hardin  
Elizabethtown  
Fort Knox  
Meade County  
Muhlenberg South  
North Hardin

## REGION 3

**District 8**  
Butler  
Doss  
Fairdale  
Holy Cross  
Pleasure Ridge Park  
Southwest Christian

**District 9**  
Central  
duPont Manual  
Male  
Ninth & O  
St. Xavier

**District 10**  
DeSales  
Evangel  
Iroquois  
Moore  
Southern  
St. Francis



## REGION 4

**District 11**  
Fern Creek  
Highview Baptist  
Jeffersontown  
Seneca  
Waggener

**District 12**  
Ballard  
Eastern  
Kentucky Country Day  
Walden

**District 13**  
Atherton  
Christian Academy  
Louisville Collegiate  
Trinity

## REGION 5

**District 14**  
Oldham County  
Shelby County  
South Oldham

**District 15**  
Bardstown  
Bethlehem  
Bullitt Central  
Bullitt East  
North Bullitt  
Nelson County

**District 16**  
Anderson County  
Frankfort  
Franklin County  
Western Hills

**District 17**  
Bourbon County  
Harrison County  
Paris  
Scott County

## REGION 6

**District 18**  
Berea  
Madison Central  
Madison Southern  
Model

**District 19**  
Boyle County  
Danville  
Jessamine County  
Lincoln County  
Woodford County

**District 20**  
Paul Dunbar  
Lafayette  
Lexington Catholic

**District 21**  
Bryan Station  
Henry Clay  
Sayre  
Tates Creek

## REGION 7

**District 22**  
Boone County  
Conner  
Lloyd Memorial  
St. Henry

**District 23**  
Dixie Heights  
Pendleton County  
Scott  
Simon Kenton

**District 24**  
Bishop Brossart  
Campbell County  
Highlands  
Newport Central Catholic

**District 25**  
Covington Catholic  
Covington Latin  
Holmes  
Holy Cross  
Ludlow

## REGION 8

**District 26**  
Mason County  
Maysville  
Montgomery County

**District 27**  
George Rogers Clark  
Menifee County  
Morgan County  
Powell County

**District 28**  
Laurel County  
Oneida  
Pulaski County  
St. Camillus  
Somerset

**District 29**  
Boyd County  
East Carter  
Paul Blazer  
Rose Hill  
Rowan County  
Russell

Announcing, the . . .

**Kentucky High School  
Athletic Association  
HALL OF FAME AND MUSEUM  
COURT OF SUPPORT**



**The Dawahares/K.H.S.A.A. Hall of Fame**

To honor the more than 1,000,000 Kentucky men and women who have contributed to "Great Moments in Kentucky High School Sports" throughout the years, the Dawahares/Kentucky High School Athletic Association Hall of Fame was established in 1988. The association chose this manner in which to pay tribute to, and to immortalize record setting and influential coaches, players, officials and supporters of high school athletics in this great Commonwealth. To date, sixty-seven members have been inducted into the Hall of Fame. After twenty-two new members are inducted on March 13, 1991, the total number of members in the Hall of Fame will have reached eighty-nine.



The Association began the project with the help of the Dawahare family, as an effort to recognize the excellence of high school educators, athletes, coaches, officials, administrators and other contributors. According to Dee Dawahare, of Lexington, "We want to recognize and encourage the academic as well as athletic contributions of these fine individuals."

Hall of Fame members are chosen for their contributions to Kentucky high school athletics. K.H.S.A.A. Commissioner Tom Mills stressed that "while many Hall of Fame Members, such as Paul Hornung, Cliff Hagan, and Tommy Bell, have gone on to outstanding careers in college or professional sports, they are primarily honored for their accomplishments in Kentucky high schools." Other members such as S.T. Roach, longtime coach at Lexington's Dunbar High School, and Ralph Carlisle, who coached at Lexington's Lafayette High School, are honored for the guidance they have given thousands of young people.

**Instructions . . .**

The Kentucky High School Athletic Association welcomes your participation in this project. Should you desire to become involved, complete the order form printed below, and return it to the K.H.S.A.A. offices at the address listed on the form.

Please feel free to contact the Association office if you have any questions. Please note that the term "basketball region" on the order form is the location within the state in which you wish your brick placed. If you have no preference, simply indicate "no preference" on the form.

Kentucky High School Athletic Association			FOR OFFICE USE																								
  560 East Cooper Drive • P.O. Box 22280 Lexington, KY 40522 • 606-252-4436			KHSAA _____	_____																							
<b>ALL SPORTS HALL OF FAME AND MUSEUM BRICK ORDER FORM</b>			KGSA _____	_____																							
			OTHER _____	_____																							
<p><b>BRICK SIZE:</b></p> <p>4" X 8" - 2 LINES • \$100.00</p> <p>6" X 8" - 3 LINES \$300.00</p> <p>8" X 8" - 4 LINES \$500.00</p>	<table border="1"> <tr><td> </td><td> </td><td> </td><td> </td><td> </td><td> </td></tr> <tr><td> </td><td> </td><td> </td><td> </td><td> </td><td> </td></tr> <tr><td> </td><td> </td><td> </td><td> </td><td> </td><td> </td></tr> <tr><td> </td><td> </td><td> </td><td> </td><td> </td><td> </td></tr> </table>																										<p>— SAMPLES —</p> <div style="border: 1px solid black; padding: 2px; font-size: small; margin-bottom: 5px;">COMPLIMENTS OF BOYLE CO. H.S.</div> <div style="border: 1px solid black; padding: 2px; font-size: small; margin-bottom: 5px;">GEORGE SWITZER PEAKS MILL HS BK - 1924-1926</div> <div style="border: 1px solid black; padding: 2px; font-size: small;">GARNIS MARTIN FB COACH 49-50 BARDSTOWN H.S. W271 L114 T7</div>
* Limit of fourteen (14) characters per line INCLUDING punctuation and space between words																											
Date _____ Basketball Region _____ Name (please print) _____ Signature _____ Address _____ Phone (    ) _____	<p><b>PLEASE CHECK METHOD OF PAYMENT</b></p> <p>Make checks payable to K.H.S.A.A. BUILDING FUND</p> <input type="checkbox"/> Cash <input type="checkbox"/> Personal check <input type="checkbox"/> VISA / MASTERCARD																										
Card # <table border="1" style="display: inline-table; vertical-align: middle;"><tr><td> </td><td> </td><td> </td><td> </td><td> </td><td> </td><td> </td><td> </td><td> </td><td> </td></tr></table> Expiration Date <table border="1" style="display: inline-table; vertical-align: middle;"><tr><td> </td><td> </td><td> </td><td> </td><td> </td><td> </td><td> </td><td> </td></tr></table>																											

# JOINT RESOLUTION

## DESIGNATING "NATIONAL HIGH SCHOOL ACTIVITIES WEEK"

Whereas more than half of the students in this nation's senior high schools are involved in at least one co-curricular activity;

Whereas this other half of education plays a significant role in the total educational development of high school students;

Whereas participation in activities such as athletics, speech, music, debate, drama, and others generally leads to positive development for all and often leads to superior achievement;

Whereas participation and achievement in those areas often contributes to increased interest and performance in strictly academic areas;

Whereas both academic and co-curricular achievement contribute greatly to the social development and interaction of all high school students;

Whereas that development directly benefits local communities by channeling young people's interest and talents into positive efforts, and by instilling in them an early sense of civic duty and community pride;

Whereas former President Gerald R. Ford has acted as honorary national chairman of the effort to recognize the important role of co-curricular activities in this nation's high schools: Now, therefore, be it

*Resolved by the Senate and House of Representatives of the United States of America in Congress assembled, that the President should designate "National High School Activities Week" (October 14-21, 1990) in recognition of the valuable contribution that such programs make in developing the interests and talents of young people at the community level.*

*Passed by both houses of Congress on December 16, 1982  
and signed into law by President Reagan in December of 1982.*



*Just a  
reminder . . . kids  
who participate in  
activities tend to go  
a little bit farther than  
those who don't.*

**NATIONAL HIGH SCHOOL ACTIVITIES WEEK**  
**October 14 - 21, 1990**

**1990 CROSS COUNTRY REGIONS****CLASS A****GIRLS**

**Region I - Manager: Willis Simpson, Providence High School, Cedar Street, Providence 42450 (502-667-7065)** Ballard Memorial, Crittenden County, Dawson Springs, Fulton City, Fulton County, Providence, South Hopkins, St. Mary, Trigg County, University Heights, West Hopkins

**Region II - Manager: David Shufelt, Fort Knox High School, 7501 Missouri Street 40121 (502-624-7030)** Bardstown, Beth Haven, Bethlehem, Caverna, Christian Academy, Green County, Hancock County, Henry County, Highview Baptist, Kentucky Country Day, Metcalfe County, South West Christian, Spencer County, St. Francis, Trimble County, Trinity (Whitesville), Washington County

**Region III - Manager: Barry Binkley, Dayton High School, 200 Jackson Street, Dayton 41074 (606-261-4357)** Bellevue, Bishop Brossart, Bracken County, Covington Latin, Dayton, Fairview, Holy Cross (Covington), Lloyd, Raceland, St. Henry, Villa Madonna

**Region IV - Manager: Frank Miklavcic, Frankfort High School, 328 Shelby Street, Frankfort 40601 (502-223-8030)** Bath County, Burgin, Carroll County, Central Kentucky Christian, Frankfort, Gallatin County, Lexington Catholic, Living Waters, Owen County, Williamstown

**Region V - Manager: Larry Gritton, Oneida Baptist Institute, Mulberry Street, Oneida 40972 (606-847-4111)** Allen Central, Buckhorn, Cordia, Dilce Combs, Elliott County, Fleming-Neon, Hazard, Jenkins, Johns Creek, June Buchanan, Lee County, Letcher County, McDowell, Menifee County, Mullins, Oneida Baptist Institute, Paintsville, Phelps, Riverside Christian

**Region VI - Manager: E.G. Plummer, Danville High School, East Lexington Avenue, Danville 40422 (606-236-7957)** Berea, Cumberland, Danville, Everts, Garrard County, Harlan, Kentucky School 1/1 Deaf, Model, Monticello, Somerset, St. Camillus, Williamsburg

**CLASS AA****GIRLS**

**Region I - Manager: Lee Lang, Fort Campbell High School, Ohio Avenue & Falcon Loop, Fort Campbell 42223 (615-431-5056)** Allen County, Calloway County, Fort Campbell, Franklin-Simpson, Greenwood, Paducah Tilghman, Owensboro, Owensboro Catholic, Trigg County, Union County, Warren East, Webster County

**Region II - Manager: David Shufelt, Ft. Knox High School, 7501 Missouri Street, Ft. Knox 40121 (606-624-7030)** Barren County, Breckinridge County, Elizabethtown, Edmonson County, Fort Knox, Glasgow, Hart County, LaRue County, Muhlenberg North, Muhlenberg South, West Hardin

**Region III - Manager: Barry Binkley, Dayton High School, 200 Jackson Street, Dayton 41074 (606-261-4357)** Conner, Covington Catholic, Dixie Heights, Grant County, Harrison County, Highlands, Mason County, Newport, Scott, Simon-Kenton

**Region IV - Manager: Jean Wright, 41 Timberlawn Circle, Frankfort 40601 (502-695-2081)** Anderson County, Bourbon County, Estill County, Franklin County, Madison Central, Mercer County, Oldham County, South Oldham, Western Hills

**Region V - Manager: Alice Leigh, Russell High School, Red Devil Lane, Russell 41169 (606-836-9658)** Breathitt County, East Carter, Fleming County, Jackson County, Knott County Central, Lawrence County, Paul Blazer, Rowan County, Russell, Sheldon Creek, West Carter, Whitesburg

**Region VI - Manager: E.G. Plummer, Danville High School, East Lexington Avenue, Danville 40422 (606-236-7957)** Adair County, Boyle County, Cawood, Clay County, Corbin, McCreary Central, Madison Southern, Marion County, Middlesboro, Taylor County, Wayne County, Whitley County

**CLASS AAA****GIRLS**

**Region I - Manager: Wilton Gant, A.D., Christian County High School, 220 Glass Avenue, Hopkinsville 42240 (502-887-1109)** Apollo, Bowling Green, Central Hardin, Christian County, Daviess County, Henderson County, Hopkinsville, Graves County, Grayson County, Madisonville-North Hopkins, Marshall County, North Hardin, Warren Central

**Region II - Manager: Bro. Borgia, St. Xavier High School, 1609 Poplar Level Road, Louisville 40217 (502-637-4712)** Atherton, Brown, Butler, Central, duPont Manual, Iroquois, Male, Presentation Academy, Sacred Heart, Shawnee, Shelby County

**Region III - Manager: Rich Rostell, Trinity High School, 4011 Shelbyville Road, Louisville 40207 (502-895-6765)** Assumption, Ballard, Eastern, Fern Creek, Jeffersontown, Meade County, Moore, Seneca

**Region IV - Manager: Russ Cline, Pleasure Ridge Park H.S., 5901 Greenwood Road, Louisville 40258 (502-473-8311)** Bullitt Central, DeSales, Doss, Fairdale, Holy Cross, Holy Rosary, Mercy Academy, North Bullitt, Pleasure Ridge Park, Southern, Valley, Western

**Region V - Manager: Alice Leigh, Russell High School, Red Devil Lane, Russell 41169 (606-836-9658)** Boone County, Boyd County, Campbell County, George Rogers Clark, Greenup County, Holmes, Johnson Central, Notre Dame, Scott County, Woodford County

**Region VI - Manager: E.G. Plummer, Danville High School, East Lexington Avenue, Danville 40422 (606-236-7957)** Bell County, Bryan Station, Henry Clay, Jessamine County, Knox Central, Latayette, Laurel County, Lincoln County, Madison Central, Montgomery County, Nelson County, Paul L. Dunbar, Pulaski County, Tates Creek, Whitley County

**1990 CROSS COUNTRY REGIONS****CLASS A****BOYS**

**Region I - Manager: Willis Simpson, Providence High School, Cedar Street, Providence 42450 (502-667-7065)** Crittenden County, Dawson Springs, Fulton City, Fulton County, Hickman County, Lyon County, Providence, South Hopkins, St. Mary, Trigg County, University Heights, West Hopkins

**Region II - Manager: David Shufelt, Fort Knox High School, 7501 Missouri Street 40121 (502-624-7030)** Bardstown, Beth Haven, Bethlehem, Caverna, Christian Academy, Cumberland County, Green County, Hancock County, Highview Baptist, Kentucky Country Day, Metcalfe County, Portland Christian, Spencer County, St. Francis

**Region III - Manager: Barry Binkley, Dayton High School, 200 Jackson Street, Dayton 41074 (606-261-4357)** Augusta, Bellevue, Bishop Brossart, Covington Latin, Dayton, Holy Cross (Covington), Fairview, Ludlow, Lloyd, Newport Central Catholic, Raceland, Silver Grove, St. Henry, Walton-Verona

**Region IV - Manager: Frank Miklavcic, Frankfort High School, 328 Shelby Street, Frankfort 40601 (502-223-8030)** Bath County, Burgin, Carroll County, Central Kentucky Christian, Frankfort, Gallatin County, Harrodsburg, Henry County, Lexington Catholic, Living Waters, Millersburg Military Institute, Owen County, Paris, Williamstown

**Region V - Manager: Larry Gritton, Oneida Baptist Institute, Mulberry Street, Oneida 40972 (606-847-4111)** Allen Central, Buckhorn, Cordia, Dilce Combs, Elliott County, Fleming-Neon, Hazard, Jenkins, Johns Creek, Lee County, Letcher, Menifee County, Oneida Baptist Institute, Owsley County, Paintsville, Phelps, Pikeville, Riverside Christian

**Region VI - Manager: E.G. Plummer, Danville High School, East Lexington Avenue, Danville 40422 (606-236-7957)** Berea, Cumberland, Danville, Evarts, Garrard County, Harlan, Model, Monticello, Somerset, Williamsburg

**CLASS AA****BOYS**

**Region I - Manager: Lee Lang, Fort Campbell High School, Ohio Avenue & Falcon Loop, Fort Campbell 42223 (615-431-5056)** Allen County, Fort Campbell, Franklin-Simpson, Greenwood, Monroe County, Owensboro, Owensboro Catholic, Paducah Tilghman, Union County, Warren East, Webster County

**Region II - Manager: David Shufelt, Ft. Knox High School, 7501 Missouri Street, Ft. Knox 40121 (606-624-7030)** Barren County, Breckinridge County, East Hardin, Edmonson County, Elizabethtown, Fort Knox, Glasgow, Hart County, LaRue County, Muhlenberg North, Muhlenberg South

**Region III - Manager: Barry Binkley, Dayton High School, 200 Jackson Street, Dayton 41074 (606-261-4357)** Conner, Covington Catholic, Dixie Heights, Grant County, Harrison County, Highlands, Lloyd, Mason County, Scott, Simon-Kenton

**Region IV - Manager: Jean Wright, 41 Timberlawn Circle, Frankfort 40601 (502-695-2081)** Anderson County, Bourbon County, Estill County, Franklin County, Mercer County, Oldham County, South Oldham, Western Hills

**Region V - Manager: Alice Leigh, Russell High School, Red Devil Lane, Russell 41169 (606-836-9658)** Breathitt County, East Carter, Fleming County, Jackson County, Knott County, Lawrence County, Paul Blazer, Rowan County, Russell, Sheldon Clark, West Carter, Whitesburg

**Region VI - Manager: E.G. Plummer, Danville High School, East Lexington Avenue, Danville 40422 (606-236-7957)** Adair County, Boyle County, Cawood, Clay County, Corbin, McCreary Central, Madison Southern, Marion County, Middlesboro, Taylor County, Wayne County, Whitley County

**CLASS AAA****BOYS**

**Region I - Manager: Wilton Gant, A.D., Christian County High School, 220 Glass Avenue, Hopkinsville 42240 (502-887-1109)** Apollo, Bowling Green, Central Hardin, Christian County, Daviess County, Graves County, Grayson County, Henderson County, Hopkinsville, Madisonville-North Hopkins, Marshall County, North Hardin, Warren Central, Warren East

**Region II - Manager: Bro. Borgia, St. Xavier High School, 1609 Poplar Level Road, Louisville 40217 (502-637-4712)** Atherton, Brown, Butler, Central, duPont Manual, Iroquois, Male, Shawnee, Shelby County, St. Xavier

**Region III - Manager: Rich Rostell, Trinity High School, 4011 Shelbyville Road, Louisville 40207 (502-895-6765)** Ballard, Eastern, Fern Creek, Jeffersontown, Meade County, Seneca, Trinity, Waggener

**Region IV - Manager: Russ Cline, Pleasure Ridge Park High School, 5901 Greenwood Road, Louisville 40258 (502-473-8311)** Bullitt Central, DeSales, Doss, Fairdale, Holy Cross, North Bullitt, Oldham County, Pleasure Ridge Park, Southern, South Oldham, Valley, Western

**Region V - Manager: Alice Leigh, Russell High School, Red Devil Lane, Russell 41169 (606-836-9658)** Boone County, Boyd County, Campbell County, George Rogers Clark, Greenup County, Holmes, Johnson Central, Paul Blazer, Scott County, Woodford County

**Region VI - Manager: E.G. Plummer, Danville High School, East Lexington Avenue, Danville 40422 (606-236-7957)** Bell County, Bryan Station, Henry Clay, Jessamine County, Knox Central, Lafayette, Laurel County, Lincoln County, Madison Central, Montgomery County, Nelson County, Pulaski County, Tates Creek

**LOWE'S**  
SPORTING GOODS  
*"Athletic Specialist"*

**BASKETBALL**

**NIKE**  
AIR



### ***Air Ascension II High***

The Air Ascension II High is designed for the serious and competitive female basketball player. Built on a women's performance last, this shoe provides exception fit and comfort. The full-grain leather upper provides the ultimate in comfort, support and durability. Visible heel and forefoot Air-Sole® units provide full-length cushioning without sacrificing flexibility. And a polyurethane Footframe™ midsole offers outstanding support and stability during rebounds, lateral moves and quick stops and starts.



### ***Air Flight '90***

For the player whose game is characterized by speed and agility, Nike offers the Air Flight '90. This high-performance basketball shoe features a full-grain leather upper with thermoplastic saddle for maximum comfort, support and breathability. A visible heel and forefoot Air-Sole® unit provide full-length cushioning that lasts the lifetime of the shoe. The forefoot Air-Sole® unit, midsole and outsole have matching flex grooves for optimum flexibility, comfort and performance.

---

**LONDON - CORBIN - PIKEVILLE, KY.**  
**TOLL FREE 1-800-467-2207**





#22-0

#845

#22-0 Official's Shirt  
Shirt features include short sleeves, byron collar, ¼ zipper front, and banded bottom.  
Sizes: S-XXL  
School Price \$18.95

#845 Official's Pants  
Pants with 2½" covered elastic waist with loops (specify no loops), 2 deep set in front pockets, 2 back patch pockets, zipper fly, 2 snaps, permanent press crease, unhemmed leg length.  
Sizes: S-XXL  
School Price \$28.95

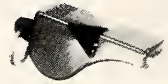


#22-G1

#840

#22-G1 Official's Shirt  
Shirt features short sleeves, long split tail, underarm mesh gusset, byron collar, ¼ zipper front.  
Sizes: S-XXL  
School Price \$18.95

#840 Official's Knicker  
Knicker with belt tunnel loops, 2 deep set in front pockets, 2 back patch pockets, zipper fly, 2 snap closure.  
Sixes: S-XXL  
School Price \$21.95



Fox 40 Whistle Ultrasonic, peafless.  
School Price \$4.95



#660 Acme Whistle Infection molded lanyard ring, cork ball.  
School Price \$1.25



605 Acme Thunderer Whistle  
Nickel-plated brass, cork ball.  
School Price \$2.95

#52 Tip Guard for use with #605 whistle. This item not pictured.  
School Price \$ .95

#401 Lanyard of woven nylon. This item is not pictured.  
School Price \$ .95

*Richard's*

231 West Main St.  
Glasgow, Ky. 42141-0498  
1-800-274-4373

Kentucky High School Athletic Association  
P.O. Box 22280  
Lexington, KY 40522

Non-Profit Org.  
U.S. Postage  
PAID  
Richmond, KY  
Permit No. 108