

11-1-1993

The Athlete, November/December 1993

Kentucky High School Athletic Association

Follow this and additional works at: <http://encompass.eku.edu/athlete>

Recommended Citation

Kentucky High School Athletic Association, "The Athlete, November/December 1993" (1993). *The Athlete*. Book 387.
<http://encompass.eku.edu/athlete/387>

This Article is brought to you for free and open access by the Kentucky High School Athletic Association at Encompass. It has been accepted for inclusion in The Athlete by an authorized administrator of Encompass. For more information, please contact Linda.Sizemore@eku.edu.

the ATHLETE

Official Publication Of The Kentucky High School Athletic Association



November/December
1993

*Committee Minutes,
Rules Interpretations
For Swimming*

Holiday Calendar

*Basketball, Wrestling,
Swimming Alignments*

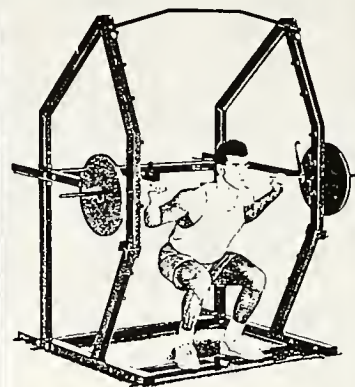
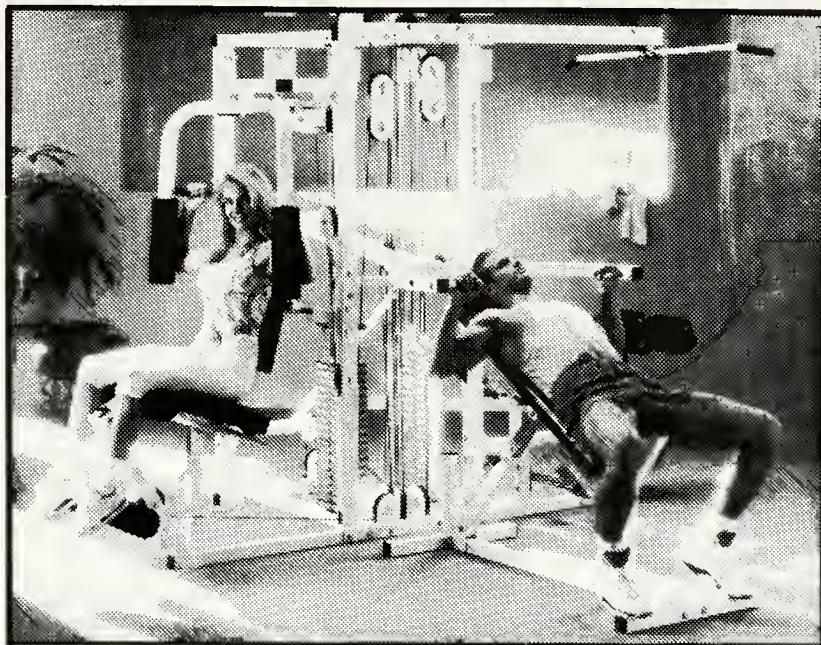
*Special Salute
To King Richeson*

*Open Dates
for Football, Basketball*



EASTERN KENTUCKY UNIVERSITY





BODYSMITH
BY PARABODY

**ROTARY SMITH
MACHINE**

PARAMOUNT.

HEAVY DUTY WEIGHT ROOM EQUIPMENT

YOU NEED IT!

WE HAVE IT!

Free Weights, Benches, Multi-Station Gyms, Cardiovascular Equipment and More from Top Names Such As:

Paramount, Titan, Tetrax, Parabody, and Precor

Call Bill Goodwin with Fitness Pro, Toll-Free 1-800-597-1071

Fitness Pro, Inc. - Supplier of Top Quality Equipment To Kentucky High Schools Since 1977. Visit Our Lexington Showroom At 1987 Harrodsburg Road (just one block from Turfland Mall).


FITNESS PRO
HEALTH & EXERCISE EQUIPMENT

1987 Harrodsburg Road • Lexington, KY 40503

(606) 276-1071 or 1-800-597-1071

Game Guy Nominations

This year, the Kentucky High School Athletic Association will once again present the Game Guy Award to an outstanding student who has overcome a great physical handicap to participate in athletics.

School representatives may make nominations for the award. The nominee must be a pupil at the junior or senior high school level.

If you have a pupil you feel is qualified, please send a letter of recommendation to the "Game Guy Committee, KHSAA, 2280 Executive Drive, Lexington, KY 40505.

Deadline for the 1994 nomination is March 1.

What Makes A Good Coach?

Reprinted from Coaches' Chalk Talk

Gallup, Inc., has identified teacher "themes" that, when explored by administrators, can help determine whether a candidate is likely to succeed as a teacher. The themes below have a strong crossover to coaching. As you read these themes, consider what characteristics and skills you consider important for coaches.

Mission -- "A teacher with a mission has a goal to make a significant contribution to other people." **Empathy** -- "Provides the teacher feedback about the individual student's feelings and thoughts."

Rapport drive -- "Is evidenced by the teacher's ability to have an approving and mutually favorable relationship with each student." **Individualized perception** -- "Means that the teacher spontaneously thinks about the interests and needs of each student and makes every effort to personalize each student's program."

Listening -- "Is evident when a person spontaneously listens to others with responsiveness and acceptance." **Investment** -- "Is indicated by the teacher's capacity to receive a satisfaction from the growth of the students."

Input drive -- "Is evidenced by the teacher who is continuously searching for ideas, materials, and experiences to use in helping other people, especially students."

Activation -- "Indicates that the teacher is capable of stimulating students to think, to respond, to feel, to learn."

Innovation -- "Is indicated when a teacher tries new ideas and techniques."

Objectivity -- "A teacher responds to the total situation. This teacher gets facts and understands first as compared to making an impulsive reaction." **Focus** -- "Is indicated when a person has models and goals. The person's life is moving in a planned direction."

Contents

4 **Golf Results**
Two seniors capture individual golf titles while Sacred Heart and St. X grab team trophies.

5 **Pigskin Playoffs**
The final district results are in and the football playoff brackets are set.

12 **Holiday Calendars**
The KHSAA's activity calendars leading up to the holiday season.

21 **The King**
Top track and field official King Richeson "unofficially" retires after more than 40 years.

On The Cover

Beechwood's Brandon Berger bursts up the middle in last year's Class A championship game.

The now departed Berger gained 199 yards in the Tiger's 21-14 win over Bardstown last season, after gaining 271 yards in the finals the year before.

Photo by Mark Zerof.

NOVEMBER/DECEMBER 1993

VOLUME LV, NO. 2

SUBSCRIPTION RATE \$10

Published six times annually, on a bimonthly basis by the Kentucky High School Athletic Association, Office of Publication, 2280 Executive Dr., Lexington, KY 40505. Third-class postage paid at Richmond, KY. Acceptance for mailing at special rate of postage provided for in Section 1103. Act of Oct 3, 1917, authorized May 3, 1926. Publication No. 293080.

Please send notice of undelivered copies on form 3579 to KHSAA, 2280 Executive Drive, Lexington, KY 40505.

Publisher: Billy V. Wise

Editor: Anne Wesley Mays
Assistant: Larry Boucher
Assistant: Louls Stout

Editor: Brooks Downing
Assistant: Brigid DeVries
Assistant: Julian Tackett

the ATHLETE (606) 299-KHSA

Kraus, Walker Win State's Top Golf Titles

Staff Report

ELIZABETHTOWN -- Steady golf described the play of both golf champions this year as Sacred Heart's Heather Kraus and Montgomery County's Bryce Walker took home the individual titles.

Kraus' efforts also led her Valkyries' teammates to the team title while St. Xavier won its second-consecutive title in the boys' tournament.

Kraus led by three strokes over Henry Clay's Sharon Park heading into the final round at the Elizabethtown Country Club. After the first nine, the lead remained the same as both girls had shot a 40.

But then Kraus, who finished fourth last season just ahead of Park, double-bogeyed the par 5, No. 10 hole. Park then cut the lead to one.

The lead stayed between one and two strokes heading into the final hole. Both hit nice approach shots, with Kraus, a senior, on the green about 55-feet from the hole. Park, a junior, was 10 feet away but on the fringe.

Kraus left her first putt within five feet of the hole and then calmly sank her next putt for the win. She finished with a 77-80--157.

Park then three-putted for a bogey. She completed the tournament with a 80-79--159. Greenwood's Ashley Smith was third with a 81-80--161.

Sacred Heart, which won four straight tournaments from 1984-87, shot a two-day total 734 to finish four strokes ahead of Franklin County.

At Vine Grove Country Club, defending boys' champ Adam Grogan of Murray was looking to become the first repeat champion since 1956. He led after the first round by one stroke over Somerset's Derrick Centers.

Grogan appeared to be in control through the first nine of the second round, leading by three strokes, until an erratic tenth hole intervened. Grogan's tee shot sailed into the creekbed, out of bounds. A penalty stroke and second tee shot cost him a double bogey, and the race was on.

However, while most thought Center's would be the chief threat, Bryce Walker, playing in the group ahead, maintained his composure.

Walker, a Montgomery County senior, was four over after round one,

three strokes off the lead. Round two had him playing par golf. And as the back nine continued, Walker walked into the lead.

With Grogan faltering, Walker maintained his consistency, event finishing the round with a 60-foot birdie putt on No. 18 to finish with a 76-71--147 total and the 1993 title.

Grogan finished the tournament seven over, 73-78--151 with Centers third at 74-78--152.

Top Finishers

Girls	
Individual	
Heather Kraus (Sacred Heart)	77-80--157
Sharon Park (Henry Clay)	80-79--159
Ashley Smith (Greenwood)	81-80--161
Jean Marie Lawson (Glasgow)	84-81--165
Brandi Stevenson (Logan Co.)	83-83--166

Team	
Sacred Heart	733
Franklin County	738
North Hardin	747
Somerset	776
Union County	794

Boys	
Individual	
Bryce Walker (Montgomery Co.)	76-71--147
Adam Grogan (Murray)	73-78--151
Derrick Centers (Somerset)	74-78--152
Eric Mason (Owsley Co.)	77-76--153
Kevin Gordon (Middlesboro)	78-77--155
Mickey Mattingly (St. X)	78-77--155
Chuck Givin (Grant Co.)	79-76--155
Tony Yager (Daviss Co.)	77-78--155
Brad Hatfield (St. X)	77-78--155
Chris Ramey (Paducah Tilghman)	76-79--155

Team	
St. Xavier	635
Daviss County	638
Middlesboro	638
Elizabethtown	650
Montgomery County	652



Heather Kraus



Bryce Walker



Greenwood's Ashley Smith hits this shot from the bunker. Smith finished third with a 81-80--161.

Photo by Tim Paro

FINAL FOOTBALL DISTRICT STANDINGS

Team	All	Dfs.	Class AA, Region II, District 2			Class AAA, Region IV, District 1		
Class A, Region I, District 1			Bullitt East	7-3	4-0 (1)	Bell County	10-0	5-0 (1)
Murray	10-0	4-0 (1)	Fort Knox	7-3	2-2 (2)	Cawood	9-1	4-1 (2)
Fulton County	8-1	3-1 (2)	Elizabethtown	5-5	2-2 (3)	Knox Central	6-4	3-2 (3)
Heath	5-5	2-2 (3)	Larue County	5-5	2-2 (4)	Pulaski Southwestern	2-8	2-3 (4)
Fulton City	6-3	1-3 (4)	Taylor County	4-6	0-4	Whitley County	5-5	1-4
Ballard Memorial	2-7	0-4				Pulaski County	0-10	0-5
Class A, Region I, District 2			Class AA, Region III, District 1			Class AAA, Region IV, District 2		
Russellville	8-2	4-0 (1)	Danville	10-0	7-0 (1)	Leslie County	7-2	3-1 (1)
Crittenden County	5-5	3-1 (2)	Anderson County	8-2	6-1 (2)	Breathitt County	7-3	3-1 (2)
South Hopkins	3-7	1-3 (3)	Mercer County	8-2	5-2 (3)	Belfry	4-6	3-1 (3)
Todd County Central	2-8	1-3 (4)	Bourbon County	4-6	4-3 (4)	Clay County	3-6	1-3 (4)
Trigg County	2-8	1-3	Western Hills	5-5	3-4	Knott County Central	1-9	0-4
			Estill County	2-8	2-5			
Class A, Region II, District 1			Boyle County	2-8	1-6			
Bardstown	10-0	5-0 (1)	Powell County	0-10	0-7	Class AAAA, Region I, District 1		
Campbellsville	8-2	4-1 (2)				Christian County	5-5	5-0 (1)
Washington County	5-5	3-2 (3)	Class AA, Region III, District 2			Daviess County	4-6	3-2 (2)
Green County	5-5	2-3 (4)	Somerset	8-2	4-1 (1)	Madisonville-North Hopkins	7-3	3-2 (3)
Metcalfe County	2-8	1-4	Rockcastle County	9-1	4-1 (2)	Marshall County	5-5	2-3 (4)
Caverna	1-9	0-5	Corbin	5-5	4-1 (3)	Apollo	2-8	1-4
			Madison Southern	6-4	2-3 (4)	Henderson County	1-9	1-4
			Middlesboro	3-7	1-4			
Class A, Region II, District 2			Wayne County	1-9	0-5	Class AAAA, Region I, District 2		
Garrard County	10-0	7-0 (1)				North Hardin	9-1	3-0 (1)
Harrodsburg	8-2	6-1 (2)	Class AA, Region IV, District 1			Shelby County	5-4	2-1 (2)
Lexington Catholic	5-5	5-2 (3)	Russell	9-1	7-0 (1)	Bullitt Central	4-6	1-2 (3)
Henry County	5-5	3-4 (4)	Lawrence County	8-2	5-2 (2)	Central Hardin	1-9	0-3 (4)
Carroll County	5-5	3-4	East Carter	7-3	5-2 (3)			
Owen County	5-5	3-4	Lewis County	4-6	3-4 (4)	Class AAAA, Region II, District 1		
Frankfort	2-8	1-6	Rowan County	6-4	3-4	Butler	9-1	5-0 (1)
Kentucky Country Day	1-8	0-7	Fleming County	4-6	3-4	Valley	7-3	4-1 (2)
			Mason County	4-6	2-5	Holy Cross (Louisville)	4-6	3-2 (3)
			West Carter	1-9	0-7	Pleasure Ridge Park	5-5	2-3 (4)
						Western	6-4	1-4
Class A, Region III, District 1						Shawnee	2-8	0-5
Newport Central Catholic	9-1	5-0 (1)	Class AA, Region IV, District 2			Class AAAA, Region II, District 2		
Beechwood	6-3	4-1 (2)	Prestonsburg	10-0	7-0 (1)	Male	9-1	5-0 (1)
Lloyd Memorial	6-4	3-2 (3)	Whitesburg	8-2	6-1 (2)	St. Xavier	8-2	3-2 (2)
Dayton	5-5	2-3 (4)	M. C. Napier	5-5	4-3 (3)	Fern Creek	7-3	3-2 (3)
Bellevue	3-7	1-4	Sheldon Clark	6-3	4-3 (4)	DuPont Manual	5-5	3-2 (4)
Ludlow	2-8	0-5	Shelby Valley	4-6	3-4	Atherton	2-8	1-4
			Pike County Central	2-8	2-5	Seneca	1-9	0-5
Class A, Region III, District 2			Magoffin County	3-7	1-6			
Paris	9-1	5-0 (1)	Morgan County	3-7	1-6	Class AAAA, Region III, District 1		
Raceland	5-5	4-1 (2)				DeSales	7-3	5-0 (1)
Paintsville	6-4	3-2 (3)	Class AAA, Region I, District 1			Fairdale	6-4	3-2 (2)
Fairview	5-5	2-3 (4)	Graves County	10-0	4-0 (1)	Iroquois	6-4	3-2 (3)
Nicholas County	4-6	1-4	Paducah Tilghman	6-3	3-1 (2)	Southern	4-6	3-2 (4)
Bath County	0-10	0-5	Hopkinsville	6-3	2-2 (3)	Doss	1-9	1-4
			Calloway County	3-7	1-3 (4)	Moore	0-10	0-5
Class A, Region IV, District 1			Union County	3-6	0-4	Class AAAA, Region III, District 2		
Hazard	8-2	6-0 (1)				Ballard	7-2	4-1 (1)
Cumberland	7-3	5-1 (2)	Class AAA, Region I, District 2			Eastern	7-2	4-1 (2)
Lynn Camp	7-3	4-2 (3)	Owensboro	10-0	6-0 (1)	Trinity (Louisville)	6-3	4-1 (3)
*Pineville	4-6	2-4	Warren Central	8-2	5-1 (2)	Central	5-5	2-3 (4)
*Everts	5-5	2-4	Bowling Green	8-2	4-2 (3)	Jeffersonton	4-6	1-4
*Williamsburg	5-5	2-4	Franklin-Simpson	6-4	3-3 (4)	Waggener	1-9	0-5
Harlan	3-7	0-6	Warren East	3-7	2-4			
			Logan County	2-8	1-5	Class AAAA, Region IV, District 1		
Class A, Region IV, District 2			Greenwood	0-10	0-6	Boone County	8-2	6-0 (1)
Pikeville	9-1	6-0 (1)				Bryan Station	9-1	5-1 (2)
Jenkins	7-3	5-1 (2)	Class AAA, Region II, District 1			Campbell County	6-4	4-2 (3)
Phelps	4-5	4-2 (3)	Meade County	7-3	5-0 (1)	Lafayette	4-6	2-4 (4)
Fleming-Neon	3-7	3-3 (4)	Nelson County	8-2	4-1 (2)	Henry Clay	6-4	2-4
Allen Central	4-6	2-4	Manion County	6-4	3-2 (3)	Tates Creek	4-6	1-5
Elkhorn City	3-7	1-5	Barren County	5-5	2-3 (4)	Paul Dunbar	1-8	1-5
South Floyd	0-9	0-6	North Bullitt	1-9	1-4			
			Grayson County	2-7	0-5	Class AAAA, Region IV, District 2		
Class AA, Region I, District 1						South Laurel	6-4	4-1 (1)
Mayfield	7-3	5-0 (1)	Class AAA, Region II, District 2			George Rogers Clark	5-5	4-1 (2)
Webster County	6-3	4-1 (2)	Lincoln County	9-1	6-0 (1)	North Laurel	5-5	3-2 (3)
Caldwell County	6-4	3-2 (3)	South Oldham	5-5	4-2 (2)	Jessamine County	3-7	2-3 (4)
Fort Campbell	3-6	2-3 (4)	Franklin County	3-7	3-3 (3)	Johnson Central	4-6	1-4
Lone Oak	1-9	1-4	Woodford County	5-5	3-3 (4)	Madison Central	1-9	1-4
Reidland	0-10	0-5	Scott County	5-5	2-4			
			Ryle	3-7	2-4	** Not competing for district title **		
Class AA, Region I, District 2			Oldham County	2-8	1-5	Berea	3-7	
Owensboro Catholic	9-1	7-0 (1)				Betsy Layne	5-5	
McLean County	9-1	6-1 (2)	Class AAA, Region III, District 1			Casey County	4-6	
Hancock County	6-4	4-3 (3)	Covington Catholic	9-1	7-0 (1)	Eminence	5-5	
Muhlenberg South	5-5	4-3 (4)	Highlands	7-3	6-1 (2)	Kentucky School ft Deaf	8-1	
Muhlenberg North	6-4	4-3	Simon Kenton	7-3	4-3 (3)	McCreary Central	1-9	
Edmonson County	4-6	2-5	Conner	6-4	4-3 (4)	Ohio County	5-5	
Breckinridge County	2-7	1-6	Newport	4-6	4-3			
Butler County	0-10	0-7	Dixie Heights	3-7	2-5			
			Holmes	1-9	1-6			
Class AA, Region II, District 1			Scott	1-9	0-7			
Russell County	9-1	5-0 (1)						
Allen County-Scottsville	8-2	4-1 (2)	Class AAA, Region III, District 2					
Monroe County	5-5	3-2 (3)	Paul Blazer	7-3	4-1 (1)			
Glasgow	4-6	2-3 (4)	Boyd County	7-3	4-1 (2)			
Adair County	3-7	1-4	Harrison County	8-2	3-2 (3)			
Hart County	1-9	0-5	Montgomery County	6-4	3-2 (4)			
			Greenup County	1-9	1-4			
			Grant County	1-8	0-5			

- 1 - District Champion
- 2 - District Runner-up
- 3 - Third-place District
- 4 - Fourth-place District

1993 FOOTBALL -- CLASS A



**1993
Class A
Champion**

1993 FOOTBALL -- CLASS AA



1993 FOOTBALL -- CLASS AAA



1993 FOOTBALL -- CLASS AAAA



1993-94 High School Basketball Alignment

REGION I

- District 1 - Carlisle County, Fulton City, Fulton County, Hickman County
- District 2 - Heath, Lone Oak, Paducah Tilghman, Reidland
- District 3 - Ballard Memorial, Graves County, St. Mary
- District 4 - Calloway County, Marshall County, Mayfield, Murray

REGION II

- District 5 - Caldwell County, Crittenden County, Livingston Central, Lyon County, Trigg County
- District 6 - Henderson County, Providence, Union County, Webster County
- District 7 - Dawson Springs, Madisonville-North Hopkins, South Hopkins, West Hopkins
- District 8 - Christian County, Fort Campbell, Hopkinsville, University Heights (Boys)

REGION III

- District 9 - Apollo, Daviess County, Owensboro, Owensboro Catholic
- District 10 - Butler County, Muhlenberg North, Muhlenberg South
- District 11 - Breckinridge County, Frederick Fraize, Hancock County, Trinity (Whitesville)
- District 12 - Grayson County, McLean County, Ohio County

REGION IV

- District 13 - Logan County, Russellville, Todd County Central
- District 14 - Bowling Green, Franklin-Simpson, Greenwood, Warren Central, Warren East
- District 15 - Allen County-Scottsville, Barren County, Edmonson County, Glasgow
- District 16 - Clinton County, Cumberland County, Metcalfe County, Monroe County

REGION V

- District 17 - Central Hardin, Elizabethtown, Fort Knox, Meade County, North Hardin
- District 18 - Caverna, Green County, Hart County, LaRue County
- District 19 - Bardstown, Bethlehem, Nelson County, Washington County
- District 20 - Adair County, Campbellsville, Marion County, Taylor County

REGION VI

- District 21 - Central, Portland Christian, Presentation (Girls), Shawnee
- District 22 - Butler, Holy Cross (Louisville), Pleasure Ridge Park, Western

- District 23 - Beth Haven, Doss, Fairdale, Valley
- District 24 - DeSales (Boys), Evangel Christian, Holy Rosary (Girls), Iroquois, Southern

REGION VII

- District 25 - Brown (Boys), duPont Manual, Louisville Collegiate, Male, Mercy Academy (Girls), St. Francis, St. Xavier (Boys)
- District 26 - Assumption, Atherton, Christian Academy-Louisville, Seneca, Trinity (Louisville) (Boys)
- District 27 - Fern Creek, Highview Baptist, Jeffersontown, Moore, Walden
- District 28 - Ballard, Eastern, Kentucky Country Day, Sacred Heart (Girls), Waggener

REGION VIII

- District 29 - Bullitt Central, Bullitt East, North Bullitt, Spencer County
- District 30 - Anderson County, Eminence, Henry County, Shelby County
- District 31 - Carroll County, Gallatin County, Oldham County, South Oldham, Trimble County
- District 32 - Grant County, Owen County, Scott County, Williamstown

REGION IX

- District 33 - Boone County, Conner, Lloyd Memorial, Ryle, Simon Kenton, St. Henry, Walton Verona
- District 34 - Beechwood, Covington Catholic (Boys), Covington Latin (Boys), Dixie Heights, Holy Cross (Covington), Ludlow, Notre Dame (Girls), Villa Madonna
- District 35 - Bellevue, Dayton, Holmes, Newport, Newport Central Catholic
- District 36 - Bishop Brossart, Campbell County, Highlands, Scott, Silver Grove

REGION X

- District 37 - Bourbon County, Harrison County, Millersburg Military Institute (Boys), Nicholas County, Paris
- District 38 - Augusta, Bracken County, Deming, Pendleton County
- District 39 - Fleming County, Mason County, St. Patrick, Tollesboro (Boys)
- District 40 - Bath County, Estill County, George Rogers Clark, Montgomery County

REGION XI

- District 41 - Frankfort, Franklin County, Western Hills, Woodford County
- District 42 - Jessamine County, Lexington Catholic, Lexington Christian, Sayre

- District 43 - Bryan Station, Henry Clay, Lafayette, Paul Dunbar, Tates Creek

- District 44 - Berea, Madison Central, Madison Southern, Model

REGION XII

- District 45 - Boyle Co, Casey County, Danville, Kentucky School ft Deaf, Lincoln County
- District 46 - Burgin, Garrard County, Harrodsburg, Mercer County
- District 47 - McCreary Central, Monticello, Russell County, Wayne County
- District 48 - North Laurel, Pulask County, Pulaski Southwestern, Somerset, South Laurel

REGION XIII

- District 49 - Clay County, Jackson County, Oneida Baptist Institute, Rockcastle County
- District 50 - Barbourville (Boys), Corbin, Knox Central, Lynn Camp, St. Camillus, Whitley County, Williamsburg
- District 51 - Bell County, Middlesboro, Pineville, Red Bird
- District 52 - Cawood, Cumberland, Evarts, Harlan

REGION XIV

- District 53 - Fleming-Neon, Jenkins Letcher, Whitesburg
- District 54 - Buckhorn, Dilce Combs Hazard, Leslie County, M.C. Napier
- District 55 - Breathitt County, Cordia Jackson City, June Buchanan School, Knott County Central, Riverside Christian
- District 56 - Lee County, Owsley County, Powell County, Wolfe County

REGION XV

- District 57 - Johnson Central, Magoffin County, Paintsville, Sheldon Clark
- District 58 - Allen Central, Betsy Layne, Prestonsburg, South Floyd
- District 59 - Millard, Pike County Central, Pikeville, Shelby Valley
- District 60 - Belfry, Elkhorn City, Feds Creek, Phelps

REGION XVI

- District 61 - Menifee County, Morgan County, Rowan County
- District 62 - East Carter, Elliott County, Lewis County, West Carter
- District 63 - Fairview, Greenup County, Raceland, Russell
- District 64 - Boyd County, Lawrence County, Paul Blazer, Rose Hill, Christian

1993-94 Basketball Rules Interpretations

SITUATION # 1: A1 is fouled and has been awarded 2 free throws. Before the ball is placed at the free thrower's disposal, A1 pulls his or her shirt out. The official directs A1 to tuck the shirt back in, but A1 refuses and uses profane language.

RULING: A1 is immediately disqualified for the flagrant technical foul. A1's replacement will attempt the 2 free throws. (10-3-8b Pen)

SITUATION #2: As A1 secures a rebound, the covering official notices that A1's nose is bleeding. The official properly stops play. While directing A1 to leave the game, the official notices there is blood on B1's arm, apparently from A1's injury.

RULING: B1 will also be directed to leave the game and go to the bench for appropriate treatment. (3-3-5)

SITUATION #3: While A1 and A2 are passing the ball around in A's frontcourt, post player A3 notices a bleeding scratch on his or her arm. A3 immediately requests a timeout and hustles to the bench area for treatment. A3's bleeding is stopped during the time-out and he or she returns to play with the other players.

RULING: A3 is entitled to return to play unless the officials determine that A3 is still bleeding. Since the officials did not halt play for A3 and did not direct A3 to leave the game, he or she may be treated during the time-out. (3-3-5)

SITUATION #4: A1 and B1 forcefully collide and A1 sustains a nose injury with considerable bleeding. A1's blood gets onto B1's uniform shirt in such an amount that the official judges it to be excessive.

RULING: Both A1 and B1 will be directed to leave the game. The fact it is A1's blood on B1's uniform is immaterial. He or she must change that part of the uniform and may not return until the next substitution opportunity. (3-3-5)

SITUATION #5: After a lengthy substitution process involving multiple substitutions for both Team A and Team B, A5 goes to the bench and remains there, believing he or she has been replaced. The ball is put in play even though Team A has only four players on the court. Team A is bringing the ball into A's frontcourt when the coach of Team A realizes they have only four players. The coach yells for A5 to return and A5 sprints directly onto the court without

reporting or without being beckoned. **RULING:** A technical foul is charged to A5 for returning during playing action even though A5 had not been replaced. (10-3-4)

SITUATION #6: A1 is awarded 2 free throws and makes the first one. A2 violates on A1's 2nd attempt and B is awarded the ball for a throw-in. Can the thrower of B run the end line?

RULING: No. The throw-in shall be from a designated spot on the end line. (7-5-11)

SITUATION #7: Team A scores a field goal. The ball drops through the net and is on the floor on the end line when A2 holds B2. **RULING:** If the official has started the throw-in count the foul is charged as any other live ball holding foul. However, if the throw-in count has not started the ball is dead, a foul is not charged unless it is intentional or flagrant. (4-18-1 Note)

SITUATION #8: A1 drives for a try and jumps and releases the ball. Contact occurs between A1 and B1 after the release and before airborne shooter A1 returns to the floor. One official calls a blocking foul on B1 and the other official calls a charging foul on A1. The try is successful.

RULING: Even though airborne shooter A1 committed a charging foul, it is not a player control foul. The fouls by A1 and B1 result in a double personal foul. The double foul does not cause the ball to become dead on the try and the goal is scored. An alternating possession throw-in results. (4-18-2,7b)

SITUATION #9: The scorer notifies the referee 10 minutes before the scheduled starting time that Team B has not submitted its roster. In addition during the game, the Team B coach asks the scorer to add a name to the book on two separate occasions. **RULING:** Team B is penalized with one technical foul to start the game for failure to submit its roster and to designate the starters. The first addition to the list during the game would also result in one technical foul charged to the team. However, the second name addition or any other subsequent administrative infractions would not result in a penalty, as the maximum of one technical foul has already been charged following the 10-minute requirement. (3-2, 10-1-1,2b)

SITUATION #10: B1 fouls A1 while A1 is in the act of shooting. The try is suc-

cessful. The administering official signals 2 free throws instead of 1. A1's free throw is successful and B1 grabs the ball as it comes through the net and inbounds it to B2. The administering official then sounds his or her whistle to halt play.

RULING: Since A1 did attempt the one merited free throw, there actually is no correction to be made. Continue the game with a throw-in by B. (2-10)

SITUATION #11: A1 inbounds the ball to A2 who is immediately trapped near the end line by B2. A2 is unable to dribble or pass and in desperation bounces the ball off B1's leg and it deflects directly out-of-bounds.

RULING: B1 has caused the ball to go out-of-bounds. Team A's ball for a throw-in. (7-2 - 9-3)

SITUATION #12: A1 attempts a pass to A2 during pressing action in A's backcourt. The ball hits B's backboard and deflects directly back to A1 who catches the ball and- (a) starts a dribble, or (b) passes the ball to A2.

RULING: It is a violation in (a) for starting a 2nd dribble as the pass against B's backboard was the start of the 1st dribble which ended when A1 recovered. In (b) the pass is legal action. (4-4-5-1 9-5)

SITUATION #13: A1 attempts a pass to A2, but seeing it will be intercepted, he or she: (a) runs and catches the ball before it hits the floor, or (b) recovers the ball after it has bounced off the floor.

RULING: In (a) and (b) the action described is the start and end of a dribble. If A1 dribbled before the pass, it is a double dribble in (a) and (b). (4-15)

SITUATION #14: B1 is directed to leave the game because of excessive blood on his or her uniform shirt. Team B's manager has failed to pack any extra shirts. (a) The coach asks one of the substitutes to give his or her shirt to B1 or (b) Team A is able to find a shirt which B1 can wear even though it is not exactly the same color or style of the Team B shirts. The shirt will however, clearly identify B1 as a member of Team B and will not be confusing to either team or the officials.

RULING: Acceptable procedure in both (a) and (b). In both situations the scorer will make necessary changes in the scorebook without penalty. (3-3-5)

November 1993

SUN	MON	TUE	WED	THU	FRI	SAT
	1 7:00pm BK Clinic - Apollo School Deadline to Enter Winter Sports	2 7:00pm BK Clinic - Graves County	3 7:00pm BK Clinic - Christian Co	4 7:00pm BK Clinic - Bowling Green HS Girls State SO Semi-Finals	5 FB Playoffs Round One	6 1:00pm WR Clinic - Conner SAT Test Date Girls State SO Finals, TBA State XC, Lexington FB Playoffs Round One
		KASSP Fall Conference, Ft. Mitchell				
		Girls State SO Round One				
		Boys Regional SO Tournament				
7	8 7:00pm BK Clinic - Henry Clay	9	10	11 Boys State SO Semi-Finals	12	13
		Boys State SO Round One			FB Playoffs Round Two	
14	15 1st SW, BK (Non FB) Contest	16 7:00pm WR Clinic - Ky. School f/t Blind	17	18	19	20 10:30am KHSADA Ex Crn - Louisville
				FB Playoffs Round Three		
21	22	23	24	25 Thanksgiving	26	27
				FB Playoffs Semi-Finals		
28	29 1st FB school BK Contest	30				

December 1993

SUN MON TUE WED THU FRI SAT

			1 1st TR practice Deadline for Delegate Assembly Proposals			4 SAT Test Date 1st WR Contest
				BOC Meeting, Louisville		State FB Finals - Louisville
5	6 1:00pm BK Make- up Clinic- KHSAA National Federation Part II Exam - BK, WR	7 7:00pm TR Clinic - Paducah Tiighman HS	8 7:00pm TR Clinic - Daviess Co. HS	9	10	11 ACT Test Date
KASS, Galt House East - Louisville						Natl Conf of HS...
12	13 1:00pm BK Make- up Clinic- KHSAA	14	15 7:00pm TR Clinic - St. Xavier HS Deadline for Ordering KHSCCA Coaches Cards	16	17	18
Natl Conf of HS Athletic Directors - Las Vegas						
19	20	21	22	23	24	25 Christmas
26	27	28	29	30	31 New Year's Eve	

Committee To Study Swimming Realignment

The Swimming Committee met on Wednesday, Sept. 22, 1993, at the KHSAA Office in Lexington. Assistant Commissioner Brigid L. DeVries called the meeting to order at 1:30 p.m. Committee members present included Tim Cahill, Matt Rydson, Martin O'Toole, Jim Rogers, David Webb, Karen Vanover, Paul Short, Wynn Paul, and Steve Bush.

Wynn Paul gave a brief presentation on upcoming swimming events scheduled at the Lancaster Aquatic Center, University of Kentucky. Wynn extended an invitation to all committee members to attend any and all events at the Lancaster Center.

The first item on the agenda was the selection of the regional sites. The managers and sites are as follows: Central Kentucky Region - Tim Cahill, Model High School, Richmond; Jefferson County Region - Martin O'Toole, Crescent Hill, Louisville; Northern Kentucky Region - Dave Webb, Scott High School, Covington; Western Kentucky Region - Jim Rogers, Hopkinsville High School, Hopkinsville. The committee discussed the regional information sheets and made some minor changes. The Regional entry deadline date is Jan. 26, 1994. Regional meets are scheduled on February 4-5, 1994.

The committee discussed the possibility of realigning the swimming regions. A subcommittee was formed to study the current alignment and to recommend a plan to the full committee. Subcommittee members include the following people: Chairperson Jim Rogers, Jerry Mohr, Matt Rydson, Paul Klingensmith, Tim Cahill and Dave Bunnell. The subcommittee will report back to the swimming committee at the next meeting.

There was a lengthy discussion on changing the entry forms for the 1993-94 State Meet. Marty O'Toole submitted a one-page sample entry form to the committee for their consideration. The committee was in favor of the new form and O'Toole and Cahill will make final revisions on the form prior to the school mailing. Furthermore, the committee is working toward a different method of seeding the state meet, by utilizing computer software compatible with the equipment used for the state meet.

The next item for discussion was the State Swimming Meet and Site. The 1994 meet is scheduled on Feb. 18-19, 1994 in the Lancaster Aquatic Center at the University of Kentucky. The preliminary heats will consist of three heats of eight swimmers in all swimming events. Dave Webb made a motion that the finals consist of eight swimmers in the consolation heat, and eight swimmers in the championship heat. The motion passed. The scoring at the State meet will change from 12 to 16 places. However, awards will remain through 12 places. The seeding meeting for the state meet is scheduled for Sunday, Feb. 6, 1994.

The 1992-93 committee recommendation that a two-meet requirement be implemented in swimming for participation in the regional swimming meets, will be submitted to the Board of Control at the Oct. 15, 1993 meeting.

The committee reviewed the state meet information and made a few changes for the 1994 meet.

The next item for discussion was in reference to diving judges at the state meet. Each of the regional managers will be responsible for providing at least one diving judge for the state meet. The additional judges will be selected at large, as has been done in

the past, so a seven-judge panel can be used.

The State Meet Combined Awards have been underwritten by a corporate sponsor in the past. Cahill will coordinate the sponsorship again this year. Should a sponsor be unavailable, these awards will be dropped. The regular team awards sponsored by the KHSAA will not be affected.

DeVries presented the National Federation rule changes for 1993-94. She also presented a press release from the Florida High School Activities Association regarding their policy on water depth and starting blocks. It was recommended that there be strict adherence to all swimming rules. If water depth is less than the required water depth specified in swimming rules 2-7-2, then host management should require that they start in the water.

The next item on the agenda was a review of the KHSAA handbook, limitation of seasons, and tourney rules.

Miscellaneous items included a listing of the various high school Swimming and Diving meets scheduled around the state. This info will be included with the Regional and State Information to be mailed at a later date.

There being no further business, the meeting was adjourned.

Swimming Regional Managers

Regionals - February 4-5, 1994

1. Western Kentucky

Hopkinsville High School
430 Koffman Drive
Hopkinsville, KY 42240
Director: Jim Rogers
School: 502/887-1219
Home: 502/885-6909

3. Central Kentucky

Eastern Kentucky Univ.
Begley #420
Richmond, KY 40475
Director: Tim Cahill
Office: 606/622-2129
Home: 606/623-8320

2. Jefferson County

Crescent Hill/St. Xavier H.S.
1609 Poplar Level Road
Louisville, KY 40217
Director: Marty O'Toole
School: 502/637-4712
Home: 502/459-2884

4. Northern Kentucky

Scott High School
5400 Old Taylor Mill Road
Covington, KY 41015
Director: Dave Webb
School: 606/356-6646
Home: 606/371-6673

STATE MEET

February 17-18, 1994

University of Kentucky, Lancaster Aquatic Center, Lexington

1993-94 High School Swimming Alignment

WESTERN KENTUCKY REGION

Girls

Apollo, Barren Co., Bethlehem, Bowling Green, Campbellsville, Central Hardin, Daviess Co., Elizabethtown, Fort Campbell, Fort Knox, Franklin-Simpson, Glasgow, Greenwood, Heath, Henderson Co., Hickman Co., Hopkinsville, Lone Oak, Mad.-North Hopkins, Marion Co., Marshall Co., Mayfield, Murray, North Hardin, Ohio Co., Owensboro, Owensboro Catholic, Paducah Tilghman, Russellville, South Hopkins, St. Mary, Taylor Co.

Boys

Apollo, Barren Co., Bethlehem, Bowling Green, Campbellsville, Central Hardin, Daviess Co., Elizabethtown, Fort Campbell, Fort Knox, Franklin-Simpson, Glasgow, Greenwood, Heath, Henderson Co., Hickman Co., Hopkinsville, Lone Oak, Mad.-North Hopkins, Marion Co., Marshall Co., Mayfield, Meade Co., Murray, North Hardin, Owensboro, Owensboro Catholic, Paducah Tilghman, Russellville, South Hopkins, St. Mary, Taylor Co., University Heights

LOUISVILLE REGION

Girls

Assumption, Atherton, Ballard, Brown, Butler, Central, Manual, Doss, Eastern, Evangel, Fern Creek, Holy Cross, Holy Rosary, Ky. Country Day, Living Waters, Louisville Collegiate, Male, Oldham Co., PRP, Sacred Heart, Seneca, Shawnee, Shelby Co., South Oldham, St. Francis, Waggener

Boys

Atherton, Ballard, Brown, Butler, Central, DeSales, Eastern, Evangel, Fern Creek, Ky. Country Day, Ky. School for the Blind, Living Waters, Louisville Collegiate, Male, Oldham Co., PRP, Seneca, Shawnee, Shelby Co., St. Francis, St. Xavier, S. Oldham, Trinity, Waggener.

CENTRAL KENTUCKY REGION

Girls

Barbourville, Berea, Bourbon Co., Boyle Co., Bryan Station, Danville, Fairview, Franklin Co., Frankfort, George Rogers Clark, Harrison Co., Henry Clay, Jessamine Co., Johnson Central, June Buchanan, KSD, Knott Co. Central, Knox Central, Lafayette, Lex. Catholic, Lex. Christian, Madison Central, Mad-

son Southern, Mercer Co., Model, Monticello, Oneida Baptist, Paris, Paul Dunbar, Sayre, Scott Co., St. Camillus, Bates Creek, Western Hills, Woodbridge, Woodford Co.

Boys

Barbourville, Berea, Bourbon Co., Boyle Co., Bryan Station, Danville, Fairview, Frankfort, Franklin Co., George Rogers Clark, Harrison Co., Henry Clay, Jessamine Co., Johnson Central, June Buchanan, KSD, Knott Co. Central, Knox Central, Lafayette, Lex. Catholic, Lex. Christian, Madison Central, Madison Southern, Mercer Co., Model, Monticello, Oneida Baptist, Paris, Paul Dunbar, Sayre, Scott Co., St. Camillus, Bates Creek, Western Hills, Woodbridge, Woodford Co.

NORTHERN KENTUCKY REGION

Girls

Beechwood, Bellevue, Boone Co., Boyd Co., Campbell Co., Conner, Dixie Heights, Highlands, Holmes, Holy Cross, Lloyd Memorial, Newport Central Catholic, Notre Dame, Paul Blazer, Russell, St. Henry, Scott, Simon Kenton, Villa Madonna

Boys

Beechwood, Bellevue, Boone Co., Boyd Co., Campbell Co., Conner, Covington Catholic, Covington Latin, Dixie Heights, Holy Cross, Highlands, Holmes, Lloyd Memorial, Newport, Newport Central Catholic, Paul Blazer, Russell, Scott, Simon Kenton



An unidentified diver heads toward the water in a full twist during last year's state meet. The '94 state finals will again be held at UK's Lancaster Aquatics Center, February 18-19.

1993-94 Swimming Rules Interpretations

SITUATION #1: Referee assigns an official to stand by the recall rope to assure the rope is lowered to the water and to sound an air horn when the referee or starter has sounded a recall signal. **RULING:** Correct procedure. (2-7-4, 4-2-1c)

SITUATION #2: There is no recall rope available. The referee informs the swimmers that an air horn and/or an underwater strobe light will be used as a recall device. **RULING:** Correct procedure. **COMMENT:** Many pools do not have ample space to include a recall rope and personnel to handle it. (2-7-4)

SITUATION #3: Swimmer A is listed on all three relays and is entered in the 500 freestyle. In prelims, Swimmer A swims the medley relay and 500 freestyle and qualifies for finals. Swimmer A's team also qualifies in the 200 freestyle relay and 400 freestyle relay. In finals Swimmer A swims in all 3 relay events. **RULING:** Legal. **COMMENT:** A relay is entered as a team of up to 8 individuals (names) of which any 4 can swim at any one time at any level of a championship meet. Prelims and finals are one meet. (3-2-1, 3-2-2)

SITUATION #4: A swimmer enters and swims the 50 yard freestyle. In addition, the swimmer is included on the list of eight swimmers for all three relays and does in fact swim in all three relays. **RULING:** Legal. **COMMENT:** A swimmer may enter 2 relays and 2 individual events or 3 relays and 1 individual event. (3-2-1)

SITUATION #5: In a championship meet Swimmer A is listed as one of the 8 names on all 3 relays. He is also entered in the 100 freestyle and 100 breaststroke. Swimmer A in trials swims medley relay, 100 freestyle, 200 free relay and declares a false start in 100 breaststroke. In the finals the coach advises that he will use Swimmer A in medley relay, 200 free relay, 400 free relay and 100 freestyle. **RULING:** Illegal. **COMMENT:** Declaring a false start still counts as one of the four events a competitor may enter in that meet. (3-2-1 & 2)

SITUATION #6: The 200 yard freestyle relay is started, the second swimmer is detected bleeding while on the block awaiting his/her start. The race is stopped, the bleeding is properly treated, maintenance of the block and/

or floor area is performed, a rest time is determined and the race is reswam.

RULING: Correct procedure. **COMMENT:** If the first swimmer has started and blood is detected on the block, the same procedure as indicated above is in order. If the fourth swimmer is bleeding, the race may be completed. Care of the swimmer and cleaning the area may take place after the relay is completed. (3-2-5)

SITUATION #7: A swimmer has a minor scrape on his/her leg received during warm-up. It is an open wound but the bleeding or flow of bodily fluids has stopped. **RULING:** Swimmer may continue to participate as long as there is no bleeding or oozing of body liquids from the scrape. The volume of water combined with chlorine, etc. makes any blood to water ratio insignificant. (3-2-5)

SITUATION #8: A swimmer receives a very bad cut on the bottom of her foot. There is severe bleeding. **RULING:** Swimmer may not compete further until the injury is treated and bleeding or flow of bodily fluids has been stopped. (3-2-5)

SITUATION #9: A swimmer is wearing a cap with a commercial logo 1 1/2" square. However, it enlarges beyond the rule specifications when the cap is put on the swimmer's head.

RULING: Legal. **COMMENT:** Measurement is to be done on uniform attire before the swimmer puts it on. (3-3-1)

SITUATION #10: A swimmer is discovered wearing a swim cap with a university name and/or university logo on it. The swimmer is allowed to compete. **RULING:** Incorrect procedure. **COMMENT:** Only the competitor's school name and/or logo, any national flag or a legal size manufacturer's logo may be on the swimming attire. No penalty is assessed, however, unless the illegal attire is discovered before the race begins. (3-3-1, 4-2-2e)

SITUATION #11: Host management requires all competitors using foreign substances such as oil or "water off" to apply these substances in a room away from the pool deck. In addition, a monitor is stationed at the door to check the competitors for excessive substance on their body before they leave the room.

RULING: Although the rules do not specify this procedure, it is okay to follow such a procedure. **COMMENT:**

The use of some foreign substances is resulting in decks and/or starting platforms becoming slippery and the water in the pool becoming cloudy, both of which are safety considerations. It also results in additional maintenance problems (clogged filters which have to be cleaned during the meet, slippery decks which require maintenance during the meet, etc.). (3-3-2)

SITUATION #12: The referee directs a coach to remove a rub down table from the deck where swimmers are being rubbed down with oil and other lotions which create a hazardous condition on deck. **RULING:** Correct procedure. **COMMENT:** A rub down table may be used. It is important that it be used in a designated area other than on deck. (3-3-2,4)

SITUATION #13: In the prelims of a championship meet, Swimmer A swims medley relay, 100 freestyle and 100 breaststroke. During finals, Swimmer A swims in medley relay; then during the finals of the 100 freestyle, after all swimmers have completed the race, Swimmer A reenters the water without permission of referee. **RULING:** Swimmer A is disqualified from the 100 breaststroke. (3-5-2, 3-5-5)

SITUATION #14: The take-off/side judges in a championship meet carry a card and pencil for recording any violations observed during the relay events. **RULING:** Although the rules do not specify this procedure, it is a good procedure to follow. (4-6-2)

SITUATION #15: At an invitational meet held in a 20-yard pool, the water depth is less than 3'6" in the shallow end opposite the starting platforms. The coaches mutually agree that the 400-yard freestyle relay shall be shortened to 320 yards. **RULING:** Legal. **COMMENT:** This results in all starts occurring at the same end of the pool. (5-1-2c)

SITUATION #16: A backstroker takes a final armpull into the turn, turns past the vertical plane toward the breast, continues to kick while finishing his/her stroke under the water.

RULING: Legal. **COMMENT:** Once the backstroker's shoulders turn past the vertical toward the breast, all movement must be part of a continuous turning action. The completion of the stroke underwater is part of the turn. (8-2-le)

GIVE A BRICK THIS CHRISTMAS!

A GIFT THAT LASTS A LIFETIME



Schools, coaches, former players and fans are supporting the Kentucky High School Athletic Association by purchasing a brick in the Court Of Support at the KHSAA's new headquarters. The Court of Support is made up of thousands of bricks...one waiting for your name or school to be represented. The brick will also be placed in the region of your choice. Just fill out the order form below and make someone's Christmas very special with this unique gift. It's a gift that will last a lifetime!

JACK WALKER BY DAY MIDDLE 25 E. 1ST AVE BELL CO. KY 40001	MEMBERSHIP OF P.A.S.A. 500 S. BOWEN HARRISBURG KY 40302	ADVA WOODS BANK BLDG. KANSAS
FRANK WELLS BY KHSAA BLDG. 2200 WEST PINE ST. KY 40302	ANNA STOTT JENKINS	COMMISSIONER OF THE STATE PUBLIC HEALTH BOARD
EDWARD GARDNER ASBOS INC. 285 CLEARVIEWTOWN	DR. CHANDLER BY KHSAA BLDG. 1900 WEST PINE ST. KY 40302	COMMISSIONER OF KENTUCKY H.S. ATHLETIC ASSOCIATION
COMMISSIONER OF BOYLE CO. H.S.	JOE B. HALL BY BOYCE BLK. 1000A HPS	SALLY GARNER BY KHSAA BLDG.
GERRI GREGORY BY ALL STATE	GARNIS MARTIN FOOTBALL COACH BARDSTOWN H.S. W-271 E-114 T-7	RAY EVRETT BY KHSAA BLDG. 1900-1900
ST. FRANCIS 43RD STS	CLAREN HASKINS	DONNA WOLFE '79 NAT'L. SOFTBALL HALL OF FAME
CLONETTE HASKINS	ALL AMERICAN W.K. 11, 00-00	

BRICK ORDER FORM

Check One:

- 4" x 8" - 2 lines...\$100
- 6" x 8" - 3 lines...\$300
- 8" x 8" - 4 lines...\$500

Date _____
Basketball Region _____

Name _____
Address _____
City/State/Zip _____ Phone _____
Signature _____

Brick: (Limit 14 characters per line including spaces)

Samples

COMPLIMENTS
BOYLE CO. H.S.

GEORGE SWITZER
PEAKS MILL H.S.
BK 1924-26

GARNIS MARTIN
FB COACH 49-90
BARDSTOWN H.S.
W271 L114 T7

Make checks payable to:
KHSAA Building Fund
2280 Executive Drive
Lexington, KY 40505

Other: (circle) Visa Mastercard
Card # _____
Exp. Date _____

1993-94 Wrestling Rules Interpretations



SITUATION #1: Wrestler A cries out indicating injury in the middle of a near fall situation and the referee stops the match. Wrestler A has already taken three timeouts.

RULING: Wrestler B would be declared the winner of the match by default. When the match is stopped in this situation it would be a timeout for Wrestler A and this would exceed the allowable number. (8-2-1)

SITUATION #2: From the down position the defensive wrestler comes up quickly and his head strikes the nose of the offensive wrestler causing bleeding. What are the guidelines for the referee to follow?

RULING: The referee will stop the match and wrestling will not resume until appropriate treatment has been administered. This means the bleeding stopped and, if the uniform has an excessive amount of blood on it, it must be changed. By excessive we mean (will it transfer, is it moist, is it wet to the touch or is it soaked through?). Injury time is not charged for bleeding or the changing of a uniform. The number and length of timeouts is left to the discretion of the referee. (8-2-6 & 7)

SITUATION #3: Wrestler A has his opponent on his back and has met near fall criteria. Prior to a three-point near fall being awarded the offensive wrestler sustains a severe nosebleed. What is the procedure for the referee to follow?

RULING: Anytime bleeding occurs the match shall be stopped. In this situation, if the offensive wrestler had met near fall criteria for two seconds, he would be awarded a two-point near fall. If it was for less than two seconds there would be no points earned. (5-2-4f & g)

SITUATION #4: Wrestler A slams Wrestler B during the tiebreaker which makes the match score 4-3 in favor of Wrestler B. Wrestler B appears to be injured as a result of the slam. Do you wait for the two-minute recover time to see if Wrestler B wins the match by default or is he the winner by a match score of 4-3?

RULING: Rule 6-7-1 states that the wrestler who scores the first points during the tiebreaker will be declared the winner, therefore, Wrestler B would be the winner of the contest by a match score of 4-3. (6-7-1)

SITUATION #5: Wrestler A applies a full nelson and, at the same time, Wrestler

B gets a cramp in his right calf or twists his ankle trying to get to his base. Both are unrelated to the illegal full nelson. What is the correct course of action for the referee to take and would this be considered as injury time or recovery time?

RULING: Rule 8-2-2 states that, if a contestant is injured as a result of an illegal hold, he would be allowed recovery time. In the above situation the injury is not the result of an illegal hold, therefore, Wrestler B would have to use injury time. (8-2-2)

SITUATION #6: In a multiple dual meet where you have four schools competing in three dual meets each, what would be the penalty if an individual is called for flagrant misconduct in the second dual meet of the multiple school event?

RULING: The points this individual would have earned during the first multiple school event would stand for his team score. The dual meet in which the flagrant misconduct call was made would result in immediate disqualification from the match and an additional wrestling in the multiple school event. (7-4-3)

SITUATION #7: Wrestler A is obviously stalling during the tiebreaker. Is this a call that should be made by the referee or should it be ignored because of the tiebreaker situation?

RULING: Each wrestler is required to make an honest attempt to wrestle aggressively regardless of the time or score in a match. The tiebreaker period is no exception to the stalling rule. Therefore, when an official recognizes stalling, he shall penalize whenever it occurs. (7-6-1 & 2)

SITUATION #8: The two contestants butt heads unintentionally and, as a result of this, one wrestler is injured and the other wrestler has a cut over his right eye. The referee stops the match and starts the injury clock on the injured wrestler. A doctor takes care of the bleeding wrestler and, within approximately 3 1/2 minutes, the cut has been taken care of and all other appropriate action taken. The injured wrestler was ready to wrestle in 1 1/2 minutes. The bleeding contestant, however, at that time, indicates that he is not ready to wrestle. What is the correct procedure for the referee to follow at this point?

RULING: Once appropriate treatment has been administered as a result of

the bleeding and the contestant is not ready to continue wrestling, the injury clock would be started. (8-2-1 & 6)

SITUATION #9: South High shows up at the weigh-in for a multiple school event and the 145-pound contestant has a full beard. Is it permissible for him to wrestle in a high school contest?

RULING: It is possible for an individual to wrestle in high school with facial hair as long as they comply with the following regulation: they must have written approval from the state high school association and they must wear a face mask during competition. (4-2-1)

SITUATION #10: Wrestler A is attempting a takedown of Wrestler B and, following initial contact, both wrestlers go off of the mat with the exception of Wrestler A's feet. Is it possible for Wrestler A to secure a takedown with only his feet remaining inbounds?

RULING: A takedown may be scored at the edge of the mat as long as control is established while at least the feet of the scoring contestant finish down on the mat inbounds. You must, however, have control at the time the referee signals out-of-bounds. You cannot be called for out-of-bounds and then move up and gain control for a takedown. (5-2-1)

SITUATION #11: Wrestler A is injured during the first period and uses 1:20 of injury time. During the second period, injury time is taken on two other occasions and the second time consumes 15 seconds and the third time, 10 seconds. During the third period Wrestler A indicates that he is injured for a fourth time. What is the procedure for the referee to follow?

RULING: Injury timeout now has two restrictions. There is a maximum of three timeouts per contest and a limit of two minutes. In the above situation, even though the two minutes have not been consumed, the maximum number of timeouts has reached its limit of three, therefore, no timeout can be granted in this situation. Wrestler A must be ready to wrestle immediately or Wrestler B would win the match by default. (8-2-1)

COACHES and OFFICIALS



**“PARTNERS IN PROFESSIONAL PROGRESS”
12TH YEAR ENROLLMENT TOPS 170,000!**

FACT!

REASON!

**ONE ANNUAL \$12.00 DUES PAYMENT COVERS ALL SPORTS
AUGUST 1 THROUGH JULY 31 (\$6.00 IF YOUR STATE IS 100%)**

INCLUDED IN DUES!

1. **NATIONAL CONFERENCE JUNE 24-28, 1994** at the Hyatt Regency in Kansas City, Missouri.
Exceptional speakers, in-depth coaching/officiating schools, business session and outstanding hospitality events!
2. **VITAL INSURANCE PROTECTION!**
\$1,000,000.00 liability coverage.
3. **UNPRECEDENTED INPUT INTO NATIONAL PLAYING RULES!**
One NFIOA and one NFICA member serves on each National Federation Playing Rules Committee.
4. **FIVE ISSUES OF THE NATIONAL FEDERATION NEWS!**
The national voice of high school activities!
5. **DRAMATIC AWARDS TO DESERVING OFFICIALS AND COACHES!**
State certificates, sectional plaques and the National High School Hall of Fame plus a complimentary lapel pin for 25 years of service.
6. **NUMEROUS OTHER FREE-BUT-VALUABLE BENEFITS!**
Discount privileges at hotels, car and truck rentals, a membership card, plus extensive committee involvement.
7. **THE PRESIDENT** of each association is an ex-officio member of the NF National Council.



JOIN NOW!

**SEND YOUR ANNUAL DUES, ALONG WITH THE
APPLICATION FORM BELOW, TODAY!**



Name _____
 Address _____
 City _____ State _____ Zip _____
 Sex _____ Date of Birth _____ Telephone () _____

CHECK PRIMARY AREA OF INTEREST/EXPERTISE

- | | | | |
|--|---|--|--|
| <input type="checkbox"/> Baseball | <input type="checkbox"/> Football | <input type="checkbox"/> Ice Hockey | <input type="checkbox"/> Tennis |
| <input type="checkbox"/> Basketball | <input type="checkbox"/> Golf | <input type="checkbox"/> Soccer | <input type="checkbox"/> Track & Field |
| <input type="checkbox"/> Cross Country | <input type="checkbox"/> Gymnastics—Boys | <input type="checkbox"/> Softball | <input type="checkbox"/> Volleyball |
| <input type="checkbox"/> Field Hockey | <input type="checkbox"/> Gymnastics—Girls | <input type="checkbox"/> Swimming & Diving | <input type="checkbox"/> Wrestling |
| <input type="checkbox"/> Other (Please list) _____ | | | |

I WORK PRIMARILY IN: (Check only one)

- | | |
|--|-------------------------------|
| <input type="checkbox"/> High School Sports | Total Years Officiating _____ |
| <input type="checkbox"/> College Sports | Total Years Coaching _____ |
| <input type="checkbox"/> Youth League Sports | |

CHECK TYPE OF MEMBERSHIP

- COACH ONLY** (Individual or Associate) \$ 12 00
- OFFICIAL ONLY** (Individual or Associate) \$ 12 00
- NFICA & NFIOA COMBINED MEMBERSHIP** \$ 15 00*
- PATRON MEMBERSHIP** \$100 00
(Canadian residents add \$9.00 mailing costs)

*Send only \$9.00 if you are an official in a 100% state and want also to join NFICA or vice versa
 TOTAL AMOUNT ENCLOSED \$ _____
 B CODE _____

One fee covers all sports for the ANNUAL membership period of August 1, 1993 through July 31, 1994.

Mail Payment to
THE NATIONAL FEDERATION
 P.O. BOX 20630, KANSAS CITY, MO. 64195.
 For further information call 816-464-5400.

**JOIN US AT THE
HYATT REGENCY HOTEL
IN KANSAS CITY, MISSOURI
JUNE 24-28, 1994**

I plan to attend the national conference in Kansas City, June 24-28, 1994.



bluegrass BASKETBALL

Preview Magazine



 **Boys' & Girls' High School Basketball**

 **Statewide Coverage**

 **Region-By-Region Previews**



OTHER PREVIEWS AVAILABLE

Please indicate number of copies of each preview ordered.

ILLINOIS

Basketball Preview _____
Football Preview _____

KENTUCKY

Basketball Preview _____

MICHIGAN

Basketball Preview _____
Football Preview _____

INDIANA

Football Preview _____
Baseball Preview _____
(Includes Girls' Softball)



OHIO

Basketball Preview _____
Football Preview _____
Baseball Preview _____

MAKE CHECKS PAYABLE TO:

S & L Publishing, Inc.
6508 Westfield Boulevard
Indianapolis, IN 46220
(317) 251-3500

PLEASE INCLUDE \$4.00 PER COPY ORDERED

(\$3.00 plus \$1.00 shipping & handling)

NAME _____

ADDRESS _____

CITY _____ STATE _____ ZIP _____

TOTAL AMOUNT ENCLOSED _____

ORDER NOW - ONLY \$3.00 PER COPY!
(Plus \$1.00 shipping & handling)

Richeson's Track Interest KHSAA's Gain

By Brooks Downing
and Brigid DeVries

In 1953, Dwight D. Eisenhower was beginning his second year in the oval office, the University of Kentucky was a football powerhouse and the television set was the rave of the nation.

Also, King Richeson was beginning his advocacy as a track and field official at the high school level.

Forty years later, King has "unofficially" retired from working the Kentucky High School Athletic Association's State Track Meet. No more King?

"I may show up again next year," said Richeson, who loves all sports. "But I'll wait and see."

His roots in the ancient sport run deep.

"I first got interested in the sport after World War II," said Richeson, who served in the U.S. Navy from 1940-45 and saw action on both the Atlantic and Pacific fronts.

He enrolled in Occidental College in California following his discharge and it was there he watched his first race.

"I just thought the 440, run around one turn, was great, and it was then that I became interested in the sport," Richeson said.

After returning to Kentucky in 1946, he earned his teaching degree at Kentucky Wesleyan College in Winchester.

He began teaching in 1948 at University High School in Lexington and his track officiating and coaching career took off.

"I inherited the coaching job at University High," Richeson said. "Basically, I took it over by default."

While also serving as athletic director, Richeson coached track, golf and basketball. But track is what he remembers fondly.

"We never had a full team at University High," he said. "Coach (John) Heber, Henry Clay's coach, would let me throw my six or seven players on the bus with his team when they traveled for a meet."

Richeson's relationship with Heber continued to develop, and when Heber's team had a home meet, Richeson would serve as an official.

"Several of my old friends and I just fell in love with the sport," Richeson said. "We would travel to Southern Indiana or Ohio State University to watch a track meet and we'd end up officiating it. From there my interest just grew."

Since his days at University High, Richeson has taught and coached at a variety of schools. Between 1954-63, he taught at Morton Junior High in Lexington and at Henry Clay High School.

From 1963-72, he taught briefly at Lees Junior College before moving on to Midway College in Versailles. Then, until his retirement in 1983, Richeson taught at Woodford County High School.

But one non-sports achievement he's most proud of is that during

his 35 years of teaching, he missed only 25 days of school, 20 during one stretch, due to back surgery.

His astounding, good health record has also enabled him to keep defensive football stats for the University of Kentucky at all of its home games. He began that advocacy in 1954 and has only missed two games since. He also keeps the scorebook at UK basketball games.

But his skill as a track official, combined with his dedication and love for the sport, earned him the honor as the outstanding track official in 1993, the first time the award was presented by the KHSAA.

And, after 40 years working the State Meet, 25 as the clerk of course, will he return? Just wait and see.



King Richeson was honored as the state's top high school track official in 1993. It was the first time the KHSAA had presented that award. Richeson served as a state track official for over 40 years, the last 25 as clerk of course.

Open Dates

BOYS' BASKETBALL

HIGHLANDS

Jan. 25, 1994 (H)
Contact John Messmer
(606) 781-3333 Ext. 33

ROWANCOUNTY

Dec. 22 (Home)
Feb. 1 (Home)
Contact Claudia Hicks
(606) 784-8956

SHELDON CLARK

Feb. 11, 12, 22
Contact Sam Sparks
(606) 298-3591

TRINITY WHITESVILLE

Jan. 14-15 (Boys/Girls)
Contact Larry Farmer
(502) 233-5184

FOOTBALL

CENTERVILLE (OH)

2,000 enrolled
Sept. 9/10, 1994
Contact Bernie Whitzmann
(513) 439-3517

MONTGOMERY COUNTY

Sept. 2, 1994
Contact Paul Rains
(606) 497-8765 or 498-6490

SEYMOUR (Indiana)

60 miles N Louisville
Sept. 30, 1994 (H or A)
Contact Mickey Beck
(812) 522-4384

TOLSIA (W.V.)

460 enrolled
Sept. 9, 1994
Oct. 14, 1994
Oct. 21, 1994
Contact Terry Porter
(304) 648-7015

GIRLS' BASKETBALL

SOUTHFLOYD

Jan. 7-8, 1994
Jan. 28-29, 1994
Feb. 4-5, 1994
Feb. 18-19, 1994
Feb. 25-26, 1994
Contact Jim Rose
(606) 452-9600

1993-94 Wrestling Alignment



Region 1

West Jefferson
Doss, Fairdale, PRP, Shawnee, Southern, Valley, Western
Central Jefferson
Atherton, Manual, KSB, Moore, Seneca, St. Xavier, Trinity

Region 2

East Jefferson
Central, Eastern, Fern Creek, Jeffersontown, KCD, Waggener
Northern Kentucky
Boone Co., Campbell Co., Conner, Dixie Heights, Holmes, Scott, Simon Kenton

Region 3

South Oldham
Boyle Co., Danville, Frankfort, Franklin Co., Jesamine Co., McCreary Central, Oldham Co., South Oldham, Wayne Co., Western Hills, Woodford Co.
Henry Clay

Boyd Co., Bryan Station, Dunbar, Harrison Co., Henry Clay, Johnson Central, Lafayette, Oneida Baptist, Paul Blazer, Rowan Co., Sheldon Clark, Tates Creek, West Carter, Whitley Co.

Region 4

Hardin County
Central Hardin, Ft. Knox, North Hardin, LaRue Co.
West Kentucky
Caldwell Co., Christian Co., Ft. Campbell, Hopkinsville, Lyon Co., Paducah Tilghman, Union Co., Webster Co.

Track Clinics

Clinics for the 1994 Track and Field season begin in December and will be held at eight locations around the state. The makeup clinic, which requires a \$50 fee to attend, will be held on April 14 at the KHSAA offices in Lexington.

The complete schedule follows.

- 12/7 Paducah (Tilghman H.S.)
- 12/8 Owensboro (Davies Co.)
- 12/15 Louisville (St. Xavier H.S.)
- 2/16 Cecelia (Central Hardin)
- 2/22 Russell (Russell)
- 2/24 Covington (Cov. Catholic)
- 3/1 London (South Laurel)
- 4/5 Lexington (KHSAA)
- 4/14 Make-up -- Lexington (KHSAA)



1994 KENTUCKY STATE TRACK & FIELD MEET

May 27-28, 1994
Shively Track
University of Kentucky

LOWE'S

SPORTING GOODS

"Athletic Specialist"

LONDON, KY



ANNUAL FOOTBALL *Sale*

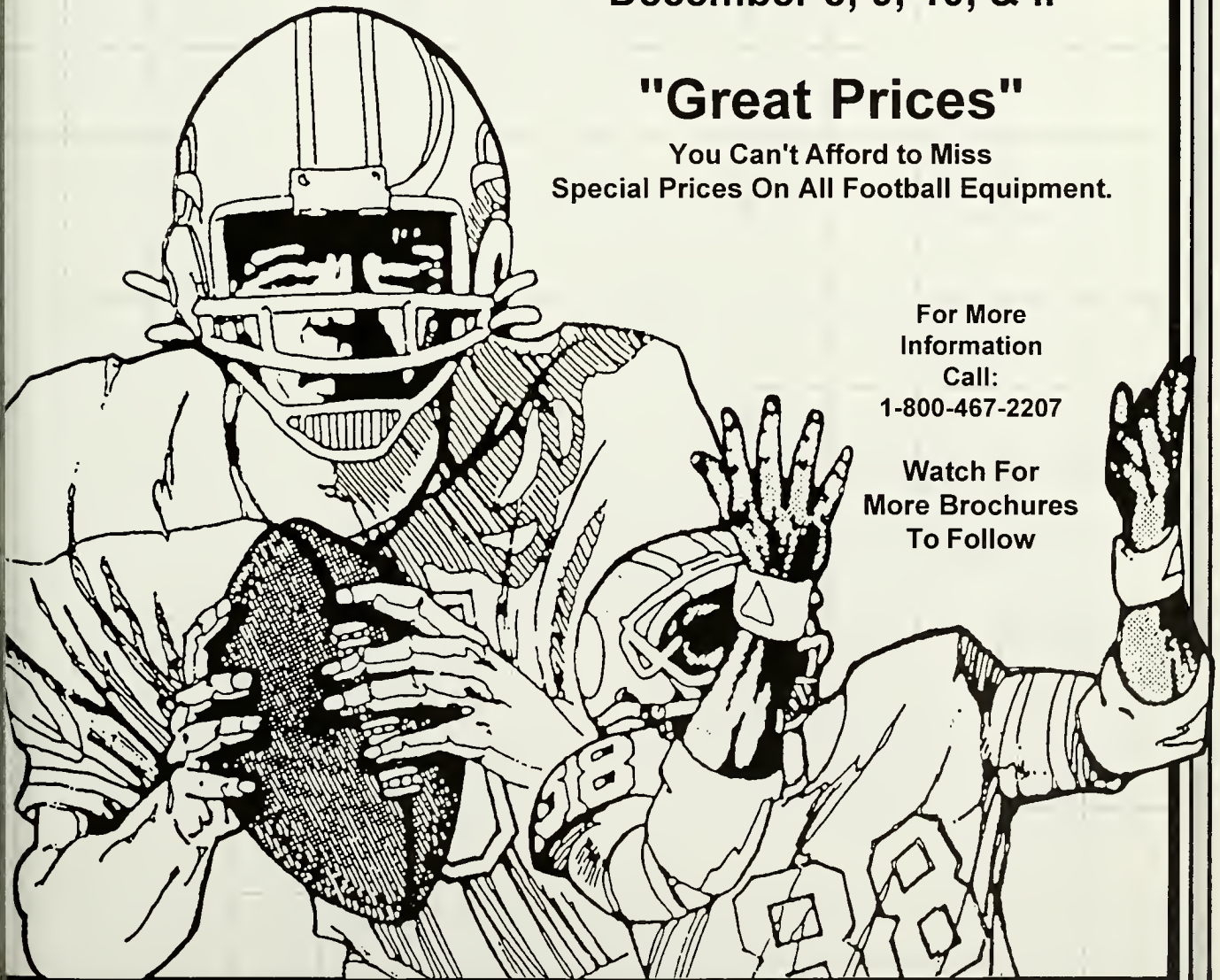
December 8, 9, 10, & 11

"Great Prices"

You Can't Afford to Miss
Special Prices On All Football Equipment.

For More
Information
Call:
1-800-467-2207

Watch For
More Brochures
To Follow



EASTMAN KODAK COMPANY

The best ankle brace is now even better!

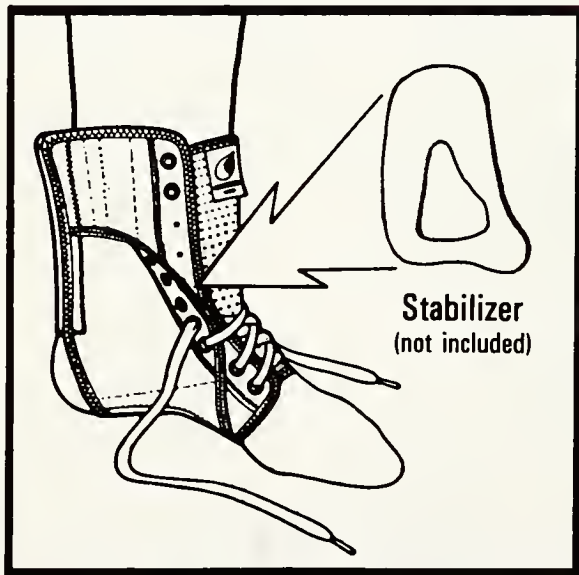


SWEDE-O-UNIVERSAL

Swede-O-Universal introduces an all-new concept...the "Knit Tongue"

This unique brace actually has three improvements:

- the knit tongue in front
- longer elastic in the back
- a reconfigured stabilizer



Your benefits from these new features include:

- a snug fit while lacing
- less bulk, fits even better inside the shoe
- greater comfort for the achille's tendon
- easier to insert stabilizers, greater comfort for calcaneus

Now \$19.95 Stabilizers \$3.90 Pair



233 W. Main
Glasgow, KY 42142-1898
1-800-274-4373

Kentucky High School Athletic Association
2280 Executive Drive
Lexington, Kentucky 40505

Non-Profit Org.
U.S. Postage
PAID
Richmond, KY
Permit No. 108

EASTERN KENTUCKY UNIV
CRABBE LIBRARY
CENTRAL SERIALS
RICHMOND, KY 40475