

9-1-1993

# The Athlete, September/October 1993

Kentucky High School Athletic Association

Follow this and additional works at: <http://encompass.eku.edu/athlete>

---

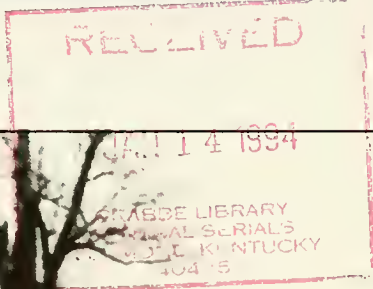
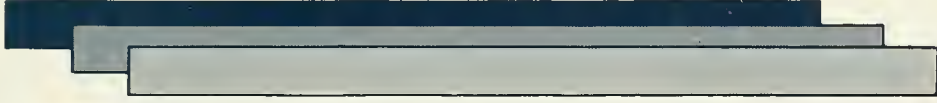
## Recommended Citation

Kentucky High School Athletic Association, "The Athlete, September/October 1993" (1993). *The Athlete*. Book 388.  
<http://encompass.eku.edu/athlete/388>

This Article is brought to you for free and open access by the Kentucky High School Athletic Association at Encompass. It has been accepted for inclusion in The Athlete by an authorized administrator of Encompass. For more information, please contact [Linda.Sizemore@eku.edu](mailto:Linda.Sizemore@eku.edu).

# the ATHLETE

Official Publication Of The Kentucky High School Athletic Association



September/October  
1993

*Minutes of Two  
Summer BOC Meetings*

*Three New Members  
Begin Terms on BOC*

*Alignments Detailed  
For All Fall Sports*

*Volleyball Committee  
 Picks Fairdale For Finals*

*Open Dates  
For Football, Basketball*



# Anti-Drug Brochure Ceases Publication

By Dick Stickle

The National Federation TARGET Program printed the first issue of **On TARGET** in May 1987. Since then, it has been published during the school year with four copies of each issue being sent, free of charge, to 25,000 public and private high schools across the nation. **On TARGET** is directed to the high school principal, athletic/activity director, substance abuse coordinator and librarian.

The intent of **On TARGET** has been to provide schools with healthy life-style material that is concise, easy to read and informative.

While many programs exist

at the elementary and/or junior high/middle school level, there are limited programs at the high school level. Research from the RAND Corporation shows that elementary and junior high/middle school tobacco, alcohol and other drug prevention programs, if not tied to further prevention efforts at the high school level, are not successful.

While some progress has been made to slow drug use at the high school level, we are a long way from solving the drug problem in America. The latest National Institute on Drug Abuse study indicates that drug use at the eighth-grade level is again on the rise after three

years of decline.

TARGET's other services, such as the National Resource Center, information to state athletic/activity associations, in-state and national training, product sales and special projects, remain in force. In addition, healthy life-style information from schools and state associations will be featured in the **National Federation NEWS** publication.

TARGET wishes to encourage all of our readers to continue their efforts in helping youths make good decisions. Your efforts can make a difference - youths don't care how much you know until they know how much you care.

# Proper Hygiene Key For Treating Wounds



It's late in the game and your team is about to put the go-ahead points on the board. Suddenly, one of your players takes a hard fall and starts bleeding profusely. The player comes to the bench for help, but you are not sure what procedures to follow.

This is a common situation for hundreds of coaches every year. What steps do you, or your student managers, take if your team does not have an athletic trainer or physician on site? Inevitably, the responsibility to make sure the student-athlete is properly cared for will fall to the head coach.

Open wounds are the most common type of injury treated by athletic trainers. They are normally caused by trauma and may range from a simple scratch to a large, deeply bleeding laceration. The type of treatment is determined by the severity of the wound.

Before any wound is treated, however, the individual providing care must protect himself or herself. Attention to proper hygiene and the use of personal protective equip-

ment is essential to inhibit the transmission of disease-causing pathogens. Always wash your hands thoroughly before and after any contact. Disposable gloves should be worn, and then properly disposed of, anytime you come in contact with blood or body fluids.

If the wound is bleeding heavily, your first priority is to stop the flow of blood. The most effective method is the application of direct pressure to the wound, preferably by using a sterile gauze bandage. If you cannot stop the bleeding, you must seek immediate medical assistance. Excessive blood is dangerous and can lead to shock.

Once the bleeding has been brought under control, you must properly bandage the wound to prevent infection. A simple step-by-step approach to bandaging the majority of open wounds follows:

1. Wash your hands thoroughly and put on a new pair of disposable gloves.
2. If the wound is bleeding, apply direct pressure with a sterile gauze pad. Small wounds with minimal blood flow can be cleaned while they are still bleeding.

3. Apply a liberal amount of aerosol soap or warm soapy water. Wash the wound using a new sterile gauze pad. Start from the inside of the wound and work out. Wash at least two inches around the wound site to kill any germs near the wound.

4. Once the wound is washed, dry the area with a new sterile gauze pad.

5. Saturate another sterile gauze pad with a small amount of antiseptic germ killer (i.e., hydrogen peroxide) and clean the wound.

6. Apply an antiseptic ointment to the wound, being careful not to touch the tube to the wound.

7. Apply a new sterile gauze pad and secure with a gauze roller bandage, an elastic wrap or some form of underwrapping.

8. Apply adhesive tape to keep the bandage in place.

Do not attempt to remove any debris left in a wound after washing; that should be left to a physician. Puncture wounds, which are caused by pointed objects penetrating deep into the skin, should not be washed with soap and water.

(See, Hygiene, Page 8)

# Statement On Racism

In light of a reported racial incident during the 1992-93 school year, the KHSAA has issued the following statement:

*The KHSAA recognizes the cultural diversity of its member school athletes, coaches, fans and spectators. The Board of Control encourages each of its member schools to make an effort to educate its participants and all parties involved in the sports program as to the need for a united approach to solving problems. In this day and time, prejudice on the basis of sex creed or ethnic origin should not and cannot be tolerated. The KHSAA encourages each of its member schools to unite in this effort.*

# The Athlete Reduced To Six Issues Annually

During the State Department of Education's review of the Kentucky High School Athletic Association, one of its 67 recommendations was to reduce the printing costs of the The Athlete magazine.

After surveying its options, the staff of the KHSAA opted to reduce the number of issues by four. Therefore, The Athlete will be published six times annually, beginning each year with the September/October issue and culminating with the Final Results issue each July.

# Football Statistics Reporting Mandatory

As the KHSAA continues to expand its efforts to publicize and promote each of its sports, the Sports Information Department is requiring each of its member schools to file a statistics report every Wednesday throughout the football season.

Even if some schools do not have players that reach the minimum requirements of a particular category, team statistics are still vital to the integrity and accuracy of our stat service.

New statistic forms were mailed to every athletic director in the state on August 24. If you have not received this information, please contact SID Brooks Downing as soon as possible.

RECEIVED

OCT 14 1993

CRABBE LIBRARY  
CENTRAL SERIALS  
RICHMOND KENTUCKY  
40475

---

## Contents

---

4

**Minutes**  
Blue Ribbon Commission begins review of KHSAA and other news from summer Board of Control Meetings.

8

**Welcome New BOC**  
Meet the three new members that begin terms on the 1993-94 KHSAA Board of Control.

11

**Successful Shootout**  
Million Dollar Shootout boasts successful financial dividends for KHSAA, schools and the Kentucky Kidney Foundation.

12

**KAPOS Awards**  
KAPOS hands out 10 Stella Gilb Scholarships totalling \$5,000.

## On The Cover

St. Henry's Maureen Egan, left, congratulates Owen County's Christina Brown moments after Brown won the 1992 Class A State Individual Championship at the Kentucky Horse Park. Egan finished second. The 1993 State Championships will also be run at the park in Lexington on November 6.  
*Photo by Greg Eans*

<b>SEPTEMBER/OCTOBER 1993</b>	<b>VOLUME LV, NO. 1</b>	<b>SUBSCRIPTION RATE \$10</b>
Published six times annually, on a bimonthly basis by the Kentucky High School Athletic Association, Office of Publication, 2280 Executive Dr., Lexington, KY 40505. Third-class postage paid at Richmond, KY. Acceptance for mailing at special rate of postage provided for in Section 1103, Act of Oct 3, 1917, authorized May 3, 1926. Publication No. 293080.	<p style="text-align: center;"><b>Publisher: Billy V. Wise</b></p> <p><b>Editor: Anne Wesley Mays</b> <b>Assistant: Larry Boucher</b> <b>Assistant: Louis Stout</b></p>	<p><b>Editor: Brooks Downing</b> <b>Assistant: Brigid DeVries</b> <b>Assistant: Julian Tackett</b></p>
Please send notice of undelivered copies on form 3579 to KHSAA, 2280 Executive Drive, Lexington, KY 40505.		<span style="font-size: 1.5em;">Ⓔ</span> <b>ATHLETE</b> (606) 299-KHSA

# Story Elected KHSAA Board President

## MINUTES

### CALLED MEETING

June 15, 1993

The Kentucky High School Athletic Association Board of Control met in Special Session at 1 p.m. at the KHSAA Office Building in Lexington on Wednesday, June 15, 1993. All Board members, with the exception of Gene Brooks, were present. Also present were Commissioner Billy V. Wise, Exec. Asst. Louis Stout, Asst. Comm. Brigid DeVries and Larry Boucher, Bus. Affairs Dir. Julian Tackett, KHSAA Attorney Danny Reeves, Gary Faulkner of the State Department of Education and newly elected Board members Cookie Henson and Ken Cox.

President Jack Portwood called the meeting to order for the purpose of addressing items discussed at a joint meeting between the KHSAA Executive Committee and the SBESE Executive Committee, the 1992-93 Working Budget, the proposed 1993-94 Budget and two appeals which had been tabled from a previous meeting of the Board. Alvis Johnson was called on for the Invocation.

The first item on the Agenda was an appeal of Joe LaGrange on behalf of his son, Roman, which was tabled from the April 14, 1993, meeting. Following questions and comments on the additional information which Board members had received since the previous meeting, Ozz Jackson moved for Executive Session. Johnson seconded the motion which passed. Following the Executive Session, Grant Talbott moved to uphold the Commissioner's decision in this case thereby denying Roman an additional year of eligibility at Montgomery County High School. Kathy Hopper seconded the motion which passed by a vote of 9-2. President Portwood then advised Mr. LaGrange of the Board's decision and the Due Process Procedure.

The next item involved an appeal to waive By-Law 30, Postseason and All-Star Games, on behalf of Jason Wamer, a student at Bullitt Central High School. Following a brief discussion of the matter, Ray Story made a motion, seconded by Talbott, that Jason's eligibility be restored, but that he be placed on probation immediately until the end of the 1993-94 school year. The motion passed unanimously.

Gary Faulkner was then called on to explain the purpose for the SBESE's appointment of the Blue Ribbon Commission. He advised the Board that the purpose of the Commission is to study optimum methods to deliver the best forms of athletics to high school students. He advised members that the Commission will be made up of 16-20 members which should be named at the SBESE meeting on July 6-7, 1993, and that two members are to be nominated by the KHSAA Board of Control. Two documents -- Ad Hoc Athletic Committee Recommendation and Summary Comments -- re: KHSAA Board of Control's Responses, prepared by the SBESE and distributed to the KHSAA Board members were then discussed. Nominations for the Blue Ribbon Commission were then made by secret ballot. Julian Tackett and Anne Wesley Mays then counted the ballots and gave to President Portwood. Portwood announced that Story and Frank Cardwell had been nominated to serve on the BRC.

President Portwood reported that the Executive Committee recommends that an additional \$100,000 be paid immediately on the loan at Montgomery & Traders Bank. Ray Story moved to accept the Committee's recommendation. Stan Steidel seconded the motion which passed unanimously.

The Committee then recommended that the Board no longer pay for family insurance coverage for the Staff and that three Association automobiles be sold. Talbott made a

motion to accept these recommendations of the Executive Committee. Johnson seconded the motion which passed 9-2. Story then moved, seconded by Cardwell, that the Board approve agreements with Shoop Chevrolet, Dutch's Chevy/Olds and Quantrell Cadillac for the use of automobiles for the Association and that the Board authorize payment of comprehensive and collision insurance with \$500 deductible. The motion passed unanimously.

Story made a motion that the Board go into Executive Session to discuss personnel. Welch seconded the motion which passed unanimously. Following Executive Session, Steidel made a motion, seconded by Cardwell, that Story be authorized to review employment contracts for the Staff. Motion passed unanimously.

Following a discussion of bids and prices for a new copier, Steidel made a motion to obtain additional information and resubmit figures to the Board at the July meeting. James Sexton seconded the motion which passed.

Talbott then made a motion, seconded by Frank Welch, that the Board authorize the Commissioner to waive By-Law 8 and By-Law 30 in cases where denying eligibility would work an evident injustice against the student. The motion passed 10-1.

Asst. Commissioner DeVries then requested that the Track Committee be given approval to proceed with a new Track Alignment. Following a brief discussion, Sexton made a motion that any changes are to be sent to the KHSAA by July 1. Steidel seconded the motion which passed unanimously.

There being no further business, Cardwell moved for adjournment. Welch seconded the motion which passed. The meeting was adjourned at 4:40 p.m.



**SCHEDULED MEETING**  
**July 16, 1993**

The Board of Control of the Kentucky High School Athletic Association met at the Association Office in Lexington, Ky., on Friday, July 16, 1993. The meeting was called to order at 8:30 a.m. by President Jack Portwood. All Board members were present. Also present were Commissioner Billy Wise, Assistant Commissioners Larry Boucher and Brigid DeVries, Business Manager Julian Tackett, S.I.D. Brooks Downing, Ken Tippett, State Dept. Representative Gary Faulkner and Board Attorney Phil Scott.

The Invocation was given by Larry Boucher.

Frank Welch made a motion, seconded by Frank Cardwell, that the minutes of the April 14-16, 1993, meeting be approved. The motion passed unanimously.

Welch made a motion, seconded by Stan Steidel, that the minutes of the June 15, 1993, meeting be approved. Grant Talbott requested that the following correction be made to Paragraph 2, Page 3: "Grant Talbott then made a motion, seconded by Frank Welch that the Board authorize the Commissioner to waive By-Law 8 and By-Law 30 in cases where denying eligibility would work an evident injustice against the student". The motion to approve the June 15, 1993, minutes passed unanimously as corrected.

Ozz Jackson moved that all bills of the Association for the period beginning April 1, 1993, and ending June 30, 1993, be approved. Claudia Hicks seconded the motion which passed.

Following a discussion of the KHSAA Policies and Procedures Manual, Hicks made a motion that the manual be adopted with corrections. Talbott seconded the motion. Steidel then recommended that the Board add the following statement to the Catastrophic Insurance Coverage Policy: "The Board strongly recommends that member schools provide

an insurance plan for all student-athletes and begin coverage for the 1993-94 school year." He suggested that the Commissioner provide a copy of an overview of the current policy to the member schools by August 20. The motion passed unanimously as amended. *(A copy of the KHSAA Policies and Procedures Manual shall be made a part of these minutes.)*

Welch made a motion that Ray Story be confirmed as President of the Board for the 1993-94 school year. Ken Cox seconded the motion which passed unanimously. Story then thanked Portwood for his leadership during the past year. Story moved to confirm the nomination of Frank Cardwell as Vice President of the Board for 1993-94. Sexton seconded the motion which passed unanimously. The meeting was then turned over to Story.

President Story thanked the Board for their vote of support and announced his plan for conducting Agenda Action Items:

- 1) Commissioner to present item
- 2) Commissioner to make recommendation
- 3) Adopt or reject the item
- 4) Discussion

President Story then appointed the following committees for 1993-94. See box on next page.

The next item on the Agenda was a discussion of the Board of Control's response to the Kentucky Department of Education's Management Review of the KHSAA. Items 1-67 were addressed individually and changes made as necessary. Frank Cardwell made a motion, seconded by Grant Talbott, to adopt the Management Review with requested changes. The motion passed unanimously. *(The Management Review with Responses shall be a part of these minutes.)*

Tackett then presented the 1993-94 Budget by using transparencies and fielded questions from the Board members. Following his presentation, Commissioner Wise recommended the adoption of the 1993-

94 Budget as presented. Jackson so moved, seconded by Steidel. The motion passed unanimously.

Commissioner Wise advised the Board that he and Tackett met with representatives in Louisville regarding the format for the State Football Championships. Due to the fact that University of Louisville has a home basketball game scheduled for December 4 at Freedom Hall, Commissioner Wise recommended that the format for playing the football championship games remain the same as 1992. Welch then made a motion that the State Football Playoff schedule be as follows: Friday, December 3 - Class A, 1:00 p.m. & Class AA, 4:00 p.m.; Saturday, December 4 - Class AAA, 1:00 p.m. & Class AAAA, 4:00 p.m. Cardwell seconded the motion which passed 11-1.

Commissioner Wise then requested that the Adm. Staff and President Story be allowed to attend the National Federation Sectional Meeting on September 23 in Morgantown, WV. He estimated the expenses to be around \$1300, based on 1992-93. Bob Rogers made a motion to approve the Commissioner's request. Jackson seconded the motion which passed unanimously.

Asst. Comm. DeVries requested approval of the track alignment that was presented at the June meeting with the changes made as requested. Stan Steidel made a motion that the recommendation of the Track Committee be accepted as presented with the changes made. Ozz Jackson seconded the motion which passed unanimously.

Commissioner Wise advised the Board that three of the Association's four cars were sold for \$17,000 and the money deposited into a savings account. Sexton inquired about the selling price and was advised that the Blue Book value was used.

Tackett requested approval to purchase a new copier at a cost of up to \$12,400. He advised the Board

**(Continued On Page 6)**

**1993-94 KHSAA COMMITTEES**

**Executive**

Ray Story, Chair  
Frank Cardwell  
Ken Cox  
Cookie Henson  
Claudia Hicks  
Kathy Hopper  
Ozz Jackson  
Bob Rogers  
James Sexton  
Stan Steidel  
Grant Talbott  
Frank Welch

**Audit & Finance**

Ray Story, Chair  
Frank Cardwell  
Claudia Hicks  
Bob Rogers  
Stan Steidel  
Grant Talbott  
Frank Welch

**Basketball**

Stan Steidel, Chair  
Frank Cardwell  
Cookie Henson  
Kathy Hopper  
Ozz Jackson  
Bob Rogers  
Frank Welch

**All-Sports**

Grant Talbott, Chair  
Ken Cox  
Cookie Henson  
Claudia Hicks  
Bob Rogers  
James Sexton  
Stan Steidel

**Football**

Ozz Jackson, Chair  
Ken Cox  
Kathy Hopper  
James Sexton  
Ray Story  
Grant Talbott  
Frank Welch

**Constitution & By-Laws**

Kathy Hopper, Chair  
Frank Cardwell  
Ken Cox  
Cookie Henson  
Claudia Hicks  
Ozz Jackson  
James Sexton

**Sports Structure**

Claudia Hicks, Chair  
James Sexton  
Stan Steidel  
Larry Boucher  
Brigid DeVries  
Louis Stout

**East Eligibility**

Frank Welch, Chair  
Ken Cox  
Cookie Henson  
Claudia Hicks  
Ozz Jackson  
Stan Steidel

**West Eligibility**

James Sexton, Chair  
Frank Cardwell  
Kathy Hopper  
Bob Rogers  
Ray Story  
Grant Talbott

**Hall of Fame**

Frank Cardwell  
All Board Members  
All Executive Staff  
Earl Cox  
Dee Dawahare  
Mike Fields  
Larry Vaught  
Bob White

**(From Page 5)**

that an outright purchase appears to be the most viable. Steidel made a motion that the Board accept the recommendation and allow the staff to make the final decision on the model after having considered lease and maintenance agreements. Jackson seconded the motion which passed unanimously.

President Story then called for lunch recess at noon to reconvene at 1 p.m.

President Story called the meeting back to order at 1 p.m. Cox moved for Executive Session. Welch seconded the motion which passed. Following discussions of legal and financial matters, Welch made a motion to return to Open Session. Jackson seconded the motion which passed.

President Story called on Don Manning-Miller, Eastern Kentucky Child Care Coalition, who had re-

quested a hearing before the Board to discuss concerns of Racism & Diversity in the Berea community. Following his presentation, President Story read the following prepared statement: "The Board of Control encourages each of its member schools to make an effort to educate its participants and all parties involved in the sports program as to the need for a united approach to solving problems. In this day and time, prejudice on the basis of sex, race, creed or ethnic origin should not and cannot be tolerated." The Board requested that a statement of this nature be included under By-Law 17 in the KHSAA Handbook and that this concern be addressed at all rules clinics.

Vice President Cardwell, called on to preside, asked the Commissioner for a recommendation regarding a Resolution of the Russellville Independent School District concerning the 1993 Fourth Region Basketball Tournament. Cox noted that the

Board should take into consideration the situation addressed in the Resolution and discourage its occurrence again in the future. The matter was referred to the Basketball Committee for consideration at the October Board meeting.

Asst. Commissioner DeVries requested that the Board approve the following sites for the State Volleyball Tournaments: 1993 - Fairdale High School; 1994 - Northern Kentucky University. She suggested that the tournament be rotated when other sites are available. Steidel made a motion, seconded by Talbott, that the Board concur with the Volleyball Committee and approve their recommendation after checking the sites. The motion passed 11-1.

Asst. Comm. Boucher presented the following recommendation of the Soccer Committee: For the next two years the semi-state soccer finals be held at the home site within the section. The host winner in 1993 will come from regions 1,3,5,7 and the host winner in 1994 will come from regions 2,4,6,8. Rogers made a motion that the recommendation of the Soccer Committee be accepted. Cox seconded the motion, which passed unanimously.

Steidel presented a concern of the Volleyball Committee relating to a modified fee structure for shortened matches. He then made a motion that for shortened matches, officials receive \$14.00 for the first match played (\$4.00 travel fee plus \$10.00 match fee) and \$10.00 per match for every match thereafter. Sexton seconded the motion which passed unanimously.

Cardwell then made a motion to accept the following "Severe Weather Policy" for officials as presented by Asst. Commissioner Boucher.

*"The Referee must delay or cancel a game at the first sight of lightning or the first sound of thunder at the game site. The site must be cleared immediately of all persons. If it is anticipated that the storm will*



(From Page 6)

*pass, the game may be resumed following a three (3) minute warm-up period, no sooner than thirty (30) minutes after the last sight of lightning or the last sound of thunder."*

If the severe weather is of great length or intensity, the Referee has the responsibility and authority to cancel the game. Game officials are encouraged to learn the weather forecast prior to game time. Safety of the public and participants is the most important factor in any decision of this type.

If a game is postponed after the start of the contest due to inclement weather, the officials originally assigned to the contest should make every effort to be available for the completion date. The member schools will not be liable for an additional game fee for the officials to work the re-scheduled game but will be liable for an additional travel expense (mileage) fee. Each local officials association is to implement a policy for the remuneration of officials working a re-scheduled contest who were not originally assigned to the contest.

If a contest is cancelled while the officials are en route, the home school is responsible for the payment of a mileage fee to the crew of officials, plus a fee of 1/5 of the scheduled game fee to each official.

If a contest is cancelled and the officials notified prior to departure, there is no financial liability on the part of the school.

Welch seconded the motion to approve the policy and the motion passed 8-4.

President Story next recognized Lawson Walker, an attorney representing Lloyd Memorial High School, who requested a hearing before the Board to discuss football reclassification. Following a lengthy discussion, Story referred the request to the Football Committee for study.

Representatives from TeleCable of Lexington then presented a proposal to the Board to

broadcast, on a delayed basis, all Sweet Sixteen Boys' Basketball Tournament games for 1994. Following their proposal, and a discussion thereof, President Story asked that further study be conducted by TeleCable and bring a recommendation to the October meeting of the Board.

Commissioner Wise gave a report on his attendance at the National Federation Meeting held in Nashville, Tennessee. Highlights of the Convention included 1) two Kentuckians inducted into the Hall of Fame; 2) American Disabilities Act; 3) an address by Doug Ruedlinger; 4) equality; 5) Home School athletes participation in their home districts; 6) Teleconferencing for rules clinics.

Due to the lack of response from the schools regarding the cross country alignment being changed to reflect the same alignment as track, this item was put on hold until a later date.

Following a discussion of the excellent manner in which Owensboro has played host to the State Softball Tournaments, Hicks made a motion, seconded by Jackson, that the tournament be held there for the next two years. The motion passed 11-1.

Tackett advised the Board that Knox Central High School had expressed a concern regarding the starting date for football. He recommended that this item be referred to the Football Committee for further study. The Board concurred.

A request from Kentucky School for the Deaf was then discussed which related to holding a scrimmage after the start of the season. Steidel moved to deny their request. Jackson seconded the motion which passed unanimously.

Commissioner Wise asked the approval of the Board to enter into a contract with Jim Payne Chevrolet for the use of an automobile. Talbott moved to approve this agreement. Cox seconded the motion, which passed.

The next item presented by Commissioner Wise related to pro-

posals passed by the Delegate Assembly but remanded back to the KHSAA from the State Department of Education for further review and recommendation. Cardwell made a motion, seconded by Talbott, that based on the fact that the Association is under study by the Blue Ribbon Commission of the State Board of Education, the Board delay its recommendation until January. The motion passed 11-1.

With regard to the "red shirt rule", Steidel made a motion that the Board develop a statement regarding By-Law 4 and offer to furnish as much documentation relating to same to the State Board as needed. Cookie Henson seconded the motion which passed unanimously.

The Board set the date for the next meeting to be held on Friday and Saturday, October 15 & 16, at the KHSAA Headquarters in Lexington.

Following a discussion of the hiring of Ray Hornback to promote the Court of Support, Rogers made a motion, seconded by Welch that the Board contract with Hornback for the remainder of the year (1993) at \$1,000/month plus expenses approved by the Commissioner. The motion passed.

There being no further business to come before the Board, Henson moved for adjournment. Cox seconded. The meeting was adjourned at 6 p.m.

<b>FALL SPORTS CHAMPIONSHIP SCHEDULE</b>	
Girls' Golf	Oct. 11-13 (Elizabethtown Country Club)
Boys' Golf	Oct. 13-15 (Lincoln Trail Country Club)
Volleyball	Oct. 29-30 (Fairdale High School)
Cross Country	Nov. 6 (Ky. Horse Park)
Girls' Soccer	Nov. 6 (Woodford County Park)
Boys' Soccer	Nov. 13 (Woodford County Park)
Football	Dec. 3-4 (Cardinal Stadium)



# New Members Take BOC Seats

Three new members elected to the KHSAA Board of Control began their four-year terms at the annual summer meeting held in Lexington, July 16.

Maureen "Cookie" Henson of Manchester, Ken Cox of Lexington and Bob Rogers of Princeton replaced Alvis Johnson, Jack Portwood and Gene Brooks, respectively.

Henson, who begins her first term on the Board, has taught 16 years in the Clay County school system, teaching science, health and physical education. She's also the girls' varsity softball coach for the Clay County Tigerettes and once served as cheerleader sponsor.

Henson received her Bachelor of Science Degree from Cumberland College in 1974 and her Masters' and Rank I from Union College.

Cox, who begins his first year on the Board, is currently principal at Tates Creek High School. After graduating Corbin High School in 1964, he began his teaching career in 1969 at Henry Clay High School and was an assistant coach for the football team. His administrative career began in 1975 as an assistant principal at Crawford Junior High. He later became principal at Beaumont Junior High in 1980.

Cox served as a high school basketball official from 1969-82, working the Sweet Sixteen in 1980. He is currently a college basketball official who has worked in the Ohio Valley Conference, the Kentucky Interscholastic Athletic Conference, the Great

Lakes Valley Conference and the Sun Belt Conference.

Cox received his bachelor's degree from the University of Kentucky in 1969, his Master's degree from Eastern Kentucky University in 1973 and his Rank 1 from ECU in 1976.

Cox and his wife Nancy have three children.

Rogers begins his third term on the Board. He previously served from 1981-84 and 1989-91. He is currently the superintendent of Caldwell County Schools.

A Christian County graduate, Rogers began his career in education at Male High School in 1966 after earning his Bachelor of Science Degree at Bethel College, his Master's Degree at Austin Peay and his Rank 1 at Murray.

After leaving Male, Rogers taught at Earlington and Henderson high schools. He returned to Earlington as principal and coach in 1971, before spending two years as assistant principal at Christian County.

In 1976, he became principal at Webster County, before taking the same position in 1980 at Ballard Memorial.

Before taking his present job, Rogers served as assistant superintendent at Murray City Schools.

In 1984, he was elected Vice-President of the Board of Control.

He and his wife Gayle have two children, one of which, Jeff, served the KHSAA as Sports Information Director from 1991-92.

# Hygiene (From Page 2)

Puncture wounds are too deep to allow contact with anything that is not sterile, but they should still be disinfected and bandaged.

Finally, there are two more important areas to deal with - cleaning up blood or body fluids and disposing of waste that has come in contact with them. If there is blood on the floor, wall or table top, it should be removed with disposable towels or some other sort of absorbent material. The area should then be disinfected. There are a number of commercial products available that are approved by the Environmental Protection Agency (EPA) or you can use a 1 to 100 dilution of common household bleach (sodium hydrochloride).

The National Collegiate Athletic Association (NCAA) recommends separating uniforms and equipment that have come in contact with blood to prevent secondary contamination. All other materials that have come in contact with blood and body fluids should also be handled carefully. The Occupational Safety and Health Administration (OSHA) has issued guidelines for disposing of blood-contaminated waste. You should check with the official at your school who is responsible for waste disposal to see what precautions you should follow.

Proper wound treatment and the disposal of blood-contaminated waste are important elements in an athletic health care program. The procedures outlined above are a good starting place, but you should seek immediate medical treatment if you have any questions or concerns about any injury.

*Cunningham is director of communications for the National Athletic Trainers' Association. Information for this article was furnished by Mark Smaha, head athletic trainer, Washington State University.*



Henson



Cox



Rogers

# 1993 State Football District Alignment

Note: Alignment based on top three grade enrollment, boys and girls. Enrollment in parentheses. Alignment changes for 1993 in italics.

## CLASS A SCHOOLS (0-400)

### **Region 1, District 1**

Ballard Memorial, Fulton City, Fulton County, Heath, Murray

### **Region 1, District 2**

Crittenden County, Russellville, South Hopkins, Todd County Central, Trigg County

### **Region 2, District 1**

Bardstown, Campbellsville, Caverna, Green County, Metcalfe County, Washington County

### **Region 2, District 2**

Carroll County, Frankfort, Garrard County, Harrodsburg, Henry County, Kentucky Country Day, *Lexington Catholic*, Owen County

### **Region 3, District 1**

Beechwood, Bellevue, Dayton, Lloyd Memorial, Ludlow, Newport Central Catholic

### **Region 3, District 2**

Bath County, Fairview, Nicholas County, Paintsville, Paris, Raceland

### **Region 4, District 1**

Cumberland, Evarts, Harlan, Hazard, Lynn Camp, Pineville, Williamsburg

### **Region 4, District 2**

Allen Central, Elkhorn City, Fleming-Neon, Jenkins, Phelps, Pikeville, *South Floyd*

## CLASS AA SCHOOLS (400-610)

### **Region 1, District 1**

Caldwell County, Fort Campbell, Lone Oak, Mayfield, Reidland, Webster County

### **Region 1, District 2**

Breckinridge County, Butler County, Edmonson County, Hancock County, McLean County, Owensboro Catholic, Muhlenberg South, Muhlenberg North

### **Region 2, District 1**

Adair County, Allen County-Scottsville, Glasgow, Hart County, Monroe County, Russell County

### **Region 2, District 2**

Bullitt East, Elizabethtown, Fort Knox, Larue County, Taylor County

### **Region 3, District 1**

Anderson County, Bourbon County, Boyle County, Danville, Estill County, Mercer County, Powell County, Western Hills

### **Region 3, District 2**

Corbin, Middlesboro, Rockcastle County, Somerset, Wayne County, Madison Southern

### **Region 4, District 1**

East Carter, Fleming County, Lawrence County, Lewis County, Mason County, Rowan County, Russell, West Carter

### **Region 4, District 2**

M.C. Napier, Magoffin County, Morgan County, Prestonsburg, Sheldon Clark, Whitesburg, Shelby Valley, *Pike County Central*

## CLASS AAA SCHOOLS (611-899)

### **Region 1, District 1**

Calloway County, Graves County, Hopkinsville, Paducah Tilghman, Union County

### **Region 1, District 2**

Bowling Green, Franklin-Simpson, Logan County, Owensboro, Warren Central, Warren East, Greenwood

### **Region 2, District 1**

Barren County, Grayson County, Marion County, Meade County, Nelson County, North Bullitt

### **Region 2, District 2**

Franklin County, Lincoln County, Oldham County, Scott County, Woodford County, South Oldham, *Ryle*

### **Region 3, District 1**

Conner, Covington Catholic, Dixie Heights, Highlands, Holmes, Newport, Scott, Simon Kenton

### **Region 3, District 2**

*Boyd County*, Grant County, Greenup County, Harrison County, Montgomery County, Paul Blazer

### **Region 4, District 1**

Bell County, Cawood, Knox Central, *Pulaski County*, Whitley County, *Pulaski Southwestern*

### **Region 4, District 2**

Belfry, Breathitt County, Clay County, Knott Co. Central, Leslie County

## CLASS AAAA SCHOOLS (900+)

### **Region 1, District 1**

Apollo, Christian County, Daviess County, Henderson County, Madisonville-North Hopkins, Marshall County

### **Region 1, District 2**

Bullitt Central, North Hardin, Shelby County, Central Hardin

### **Region 2, District 1**

Butler, Holy Cross (Louisville), Pleasure Ridge Park, Shawnee, Valley, Western

### **Region 2, District 2**

Atherton, DuPont Manual, Fern Creek, Male, Seneca, St. Xavier

### **Region 3, District 1**

DeSales, Doss, Fairdale, Iroquois, Moore, Southern

### **Region 3, District 2**

Ballard, Central, Eastern, Jeffersontown, Trinity, Waggener

### **Region 4, District 1**

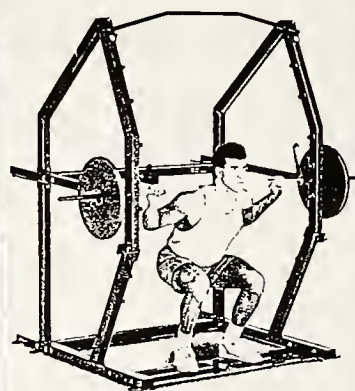
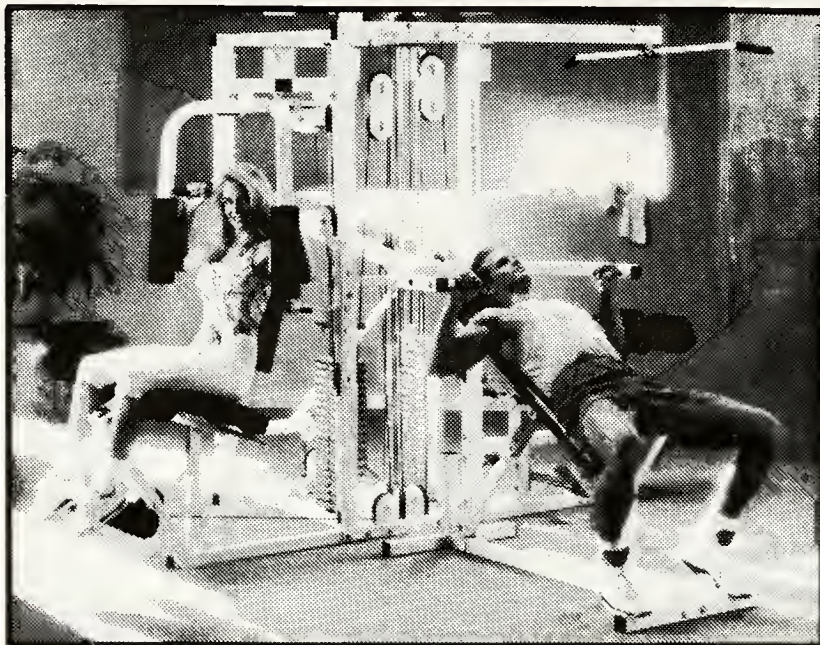
Boone County, Bryan Station, Campbell County, Henry Clay, Lafayette, Tates Creek, Paul Dunbar

### **Region 4, District 2**

George Rogers Clark, Jessamine County, Johnson Central, South Laurel, Madison Central, North Laurel

### **Not Competing for District**

\*NC\* - Berea, Betsy Layne, Casey County, Eminence, Kentucky School f/t Deaf, McCreary Central, Ohio County



**BODYSMITH**  
BY PARABODY

**ROTARY SMITH  
MACHINE**

**PARAMOUNT.**

**HEAVY DUTY WEIGHT ROOM EQUIPMENT**

***YOU NEED IT!***

***WE HAVE IT!***

**Free Weights, Benches, Multi-Station Gyms, Cardiovascular Equipment and More from Top Names Such As:**

**Paramount, Titan, Tatrix, Parabody, and Precor**

**Call Bill Goodwin with Fitness Pro, Toll-Free 1-800-597-1071**

**Fitness Pro, Inc. - Supplier of Top Quality Equipment To Kentucky High Schools Since 1977. Visit Our Lexington Showroom At 1987 Harrodsburg Road (just one block from Turfland Mall).**

**FITNESS  PRO**  
HEALTH & EXERCISE EQUIPMENT

**1987 Harrodsburg Road • Lexington, KY 40503**

**(606) 276-1071 or 1-800-597-1071**

# First \$Million Shootout Exceeds Goal

LOUISVILLE — Over 25,000 Kentuckians participated in the first **One Million Dollar Shootout** at 60 high schools and other venues during the 1992-93 basketball season. Proceeds from the unique fundraising event were split between the National Kidney Foundation of Kentucky, the Kentucky High School Athletic Association and participating schools.

rim. (In a similar contest, a contestant did win one million dollars this spring by hitting a shot during a Chicago Bulls NBA game.)

ables participating schools to raise money whenever and wherever a crowd gathers— school lunches, community events, etc.

## Schools Make More \$ In 1993-94

As a result of listening to input from participating high schools, it will be easier to make money with the Shootout during the 1993-94 season. Here's how it works:

- For a \$1 donation, your fans shoot three free throws before and at halftime of home basketball games and other school events. If they hit two out of three, they qualify for a chance to win one million dollars.
- Or, for a \$2 donation, fans can enter by simply completing an official entry form (NO FREE THROWS).

The "\$2 Entry Option" en-

## Sign Up Now

Everything necessary to run the Shootout event is provided to the school at no cost.

Its easy to operate and presents a good opportunity to raise money and increase attendance at home basketball games. To sign up or obtain more information about the **One Million Dollar Shootout**, call

**1-800-737-5433.**

Participation may be limited to schools on a first come, first served basis.

## ONE MILLION DOLLAR KENTUCKY SHOOTOUT SIGN-UP FORM

School: \_\_\_\_\_

Address: \_\_\_\_\_

City \_\_\_\_\_ State \_\_\_\_\_ Zip \_\_\_\_\_

Phone #1: \_\_\_\_\_ Phone #2: \_\_\_\_\_ Fax #: \_\_\_\_\_

School Contact: \_\_\_\_\_ Position: \_\_\_\_\_

(School Name) \_\_\_\_\_ will participate in the **ONE MILLION DOLLAR KENTUCKY SHOOTOUT** during the 1993-94 high school basketball season. Please send us a complete SHOOTOUT KIT!

Print Name: \_\_\_\_\_

Signature: \_\_\_\_\_ Date: \_\_\_\_\_

Please Return To:

One Million Dollar Kentucky Shootout  
c/o National Kidney Foundation of Kentucky  
Suite 710, 250 East Liberty Street  
Louisville, KY 40202

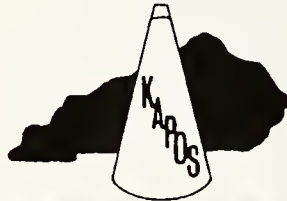


# KAPOS Awards 10 Gilb Scholarships

The Kentucky Association of Pep Organization Sponsors (KAPOS) is pleased to recognize 10 scholarship winners for 1993. Each recipient was chosen for academic and leadership ability and will receive \$500.

Since 1964, KAPOS has awarded 95 scholarships in the amount of \$59,100. Applications for the 1994 scholarships will be available in Janu-

ary. Any cheerleader at a KAPOS member school is eligible to make application.



The 1993 award winners are:

Shelly Brasher  
Carrie Clayton  
Melanie Cooper  
Kimberly Hobbs  
Jennifer Potter  
Beth Ann Richards  
Heather Shaw  
Kara Vogelwohl  
Casey Wood  
Jacqueline Wright

Trinity-Whitesville  
Nelson County  
Lincoln County  
Nelson County  
Lyon County  
Ohio County  
Oldham County  
St. Henry  
Barren County  
Bracken County



Brasher



Clayton



Cooper



Hobbs



Potter



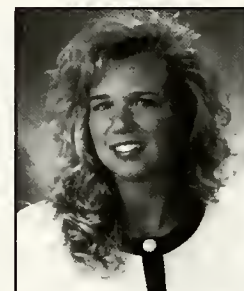
Richards



Shaw



Vogelwohl



Wood



Wright

## WILSON NAMED KHSAA'S OFFICIAL BALL

The Kentucky High School Athletic Association begins its second year of a three-year agreement with the Wilson Sporting Goods Company which names Wilson the official supplier for game balls in state tournament events. Wilson will supply balls for the following championship events:

FOOTBALL  
BASKETBALL

SOCCER  
BASEBALL

SOFTBALL  
TENNIS

### Stock and Model Information

Football	TD/F1001
Soccer	Avanti/Aerion
Softball	Optima Gold (Non-Restricted Flight)
Baseball	A-10-10/A-10-11 (raised seam)
Tennis	Extra Duty
Basketball	Boys -- Jet (Wide/Narrow Seam) Girls -- Jet 285



# October 1993

SUN                  MON                  TUE                  WED                  THU                  FRI                  SAT



<b>1</b> 1st SW practice 1st BK Practice, Non FB schools	<b>2</b>
---	----------

<b>4</b>	<b>5</b>	<b>6</b>	<b>7</b>	<b>8</b>	<b>9</b> SAT Test Date
Boys' and Girls' Regional GF Tournaments					

<b>11</b> 7:00pm BK Clinic - Henry County	<b>12</b> 7:00pm BK Clinic - Elizabethtown HS	<b>13</b>	<b>14</b> 7:00pm BK Clinic - Male HS	<b>15</b> 1st WR, BK (FB) Practice	<b>16</b> 3:00pm WR Clinic - Frankfort HS
Girls State GF Tournament - E-town Country Club			Boys State GF Tournament - Lincoln Trail		
BOC Meeting, Lexington					

<b>18</b> 7:00pm BK Clinic - Somerset HS	<b>19</b> 7:00pm BK Clinic - Bell County	<b>20</b> 7:00pm BK Clinic - Dilce Combs	<b>21</b> 7:00pm BK Clinic - Prestonsburg HS	<b>22</b> Regional VB Tournaments	<b>23</b> 2:00pm WR Clinic - Christian Co ACT Test Date
Regional VB Tournaments					



National High School Activities Week					
<b>25</b> 7:00pm BK Clinic - Rowan County	<b>26</b> 7:00pm BK Clinic - Ashland Comm. College	<b>27</b> 7:00pm BK Clinic - Mason County	<b>28</b> 7:00pm BK Clinic - NKU	<b>29</b>	<b>30</b> Regional XC Meets
State VB Tournament, Fairdale H.S.					
Girls Regional SO Tournaments					
Boys District SO Tournaments					



# Volleyball Committee Picks Fairdale In '93

## MINUTES

The Volleyball Committee met at the Kentucky High School Athletic Association Office in Lexington, Ky., on Thursday, July 15, 1993. The meeting was called to order at 1:30 p.m. by Brigid L. DeVries, Assistant Commissioner. Committee members present included Jack Pylinski, Steve Williams, Sarah Good, Ron Kordes, Katie Wesseling, Luci Cecil, Jenny Mertle, Joan Mitchell, and Donna Wolfe. Others present included Stan Steidel and Assistant Commissioner Larry Boucher.

The meeting began with Boucher's report on the officials' division. Boucher discussed general registration procedures, as well as specific information with reference to the sport of volleyball.

The first item on the agenda was a discussion of the regional alignment proposals. Mertle presented a proposal from the NKHSGA dividing the two northern Kentucky regions into three regions. Williams also had a proposal held over from the last committee meeting, which divided the state into seven regions with the possibility of an eighth region being added at a later date. After a lengthy discussion on both proposals, it was decided that a sub-committee be appointed to study the issue and make a recommendation back to the Volleyball Committee at the next meeting. The sub-committee includes Sarah Good, Jenny Mertle and Steve Williams. The overall feeling of the committee was to have eight regions and bring 16 teams, winner and runner-up from each region, to the State Volleyball Tournament, which would eliminate the byes that currently exist in the state tournament format. The concept of a new 16-team format will be a discussion item at the upcoming meeting of the Board of Control.

The next item on the agenda was a discussion of regional tournaments and sites. DeVries advised the

Committee of a few additions to the teams in each region. The 1993 regional sites were discussed and committee members made recommendations for the 1993 tournaments. Regional tournaments will be double elimination again in 1993. The Committee then reviewed the items on the regional information sheets and made some revisions.

The committee made no change regarding team seating for the 1993 season, so teams will change benches after each game for all levels of play. Trophies at the regional tournament level will once again be paid for out of gate receipts for the 1993 tournaments.

The next item on the agenda was a discussion regarding the 1993 State Volleyball Tournament. The State Tournament is scheduled for October 29-30, 1993. The committee recommended that the 1993 tournament be held in Louisville at Fairdale High School, pending a visit by DeVries to the school and subsequent meeting with school officials at Fairdale. The Committee also recommended that the 1994 State Tournament be played in Northern Kentucky and rotated in the future as long as there is interest in each area for playing host to the tournament. The Committee reviewed the state information sheets and decided that the 1993 tournament should be run pretty much the same as the 1992 tournament.

A sub-committee was formed to revise the State Tournament schedule with the proposed 16-team format. Sub-committee members include Ron Kordes, Katie Wesseling

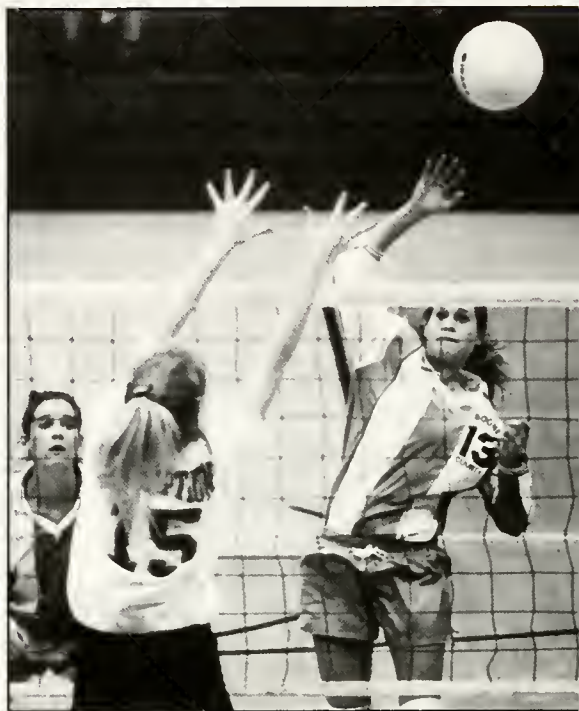


Photo by Greg Eans

**Boone County's Leslie Bickers attempts to spike this ball past Assumption's Annie Filley during the 1992 State Volleyball Tournament.**

and Joan Mitchell. The sub-committee will report back to the full committee at the next meeting.

Committee members conducted the draw for the 1993 State Tournament. The Mikasa VFC 200 Volleyball will be the official ball for the 1993 State Tournament.

The next item on the agenda was a discussion of the 1993-94 National Federation rule changes. The biggest change this year had to do with blood on the uniform and the procedure to handle it.

The committee reviewed the 1992-93 KHSAA Constitution and By-Laws and discussed increasing the number of tournaments and/or matches allowed in the limitation of seasons section. Committee members were advised of the procedure to make By-Law changes by going through the Delegate Assembly. The committee members will work on a proposal to be submitted to the 1994



(From Page 14)

Delegate Assembly regarding the increase in the number of matches.

The 1993 Volleyball Clinics for coaches and officials with the dates and locations are as follows: August 11 (Dixie Heights H.S.), August 12 (Ohio Valley Volleyball Center - Louisville) August 16 (KHSAA), \*September 7 (KHSAA)

\* NOTE: Makeup clinic, \$50.00 fee charged.

Miscellaneous items included a change in the selection process for the State All-Tournament team. The new process is as follows:

*Teams participating in the semifinals (four teams) would get two selections from their teams. The head coach from each team would name their all-tournament players.*

*The remaining eight teams may nominate one player to be considered by all 12 coaches for the remaining four positions. Coaches may vote for their own players. Players of coaches who do not vote are not eligible for the all-tournament team. In addition to the 12 all-tournament team players, a most valuable player will be selected by the winning coach from the players on the winning team.*

Other items discussed included awarding individual trophies to all 15 members of the winning and runner-up teams in the tournament.

Steidel made the recommendation that a fee structure be outlined and published for varsity matches when they are modified. Often in large invitational tournaments, a match might consist of two 11-point games. Steidel recommended that for modified matches, officials receive \$14 for the first match played, (\$4 travel fee and \$10 match fee) and \$10 per match for every match thereafter. The committee approved the recommendation which will be submitted to the Board of Control for approval.

The next Volleyball Committee meeting will be scheduled in December, 1993. There being no further business the meeting was adjourned.

# 1993 Volleyball Alignment

## DIVISION OF TEAMS INTO REGIONS

### REGION I

Beth Haven  
Butler  
Doss  
Evangel  
Fairdale  
Holy Cross  
Holy Rosary  
Pleasure Ridge Park  
Shawnee  
Southwest Christian  
Valley  
Western

### REGION IV

Beechwood  
Covington Latin  
Dixie Heights  
Grant County  
Holmes  
Holy Cross  
Lloyd Memorial  
Ludlow  
Notre Dame  
St. Henry  
Scott  
Simon Kenton  
Villa Madonna

### REGION II

Brown  
Bullitt East  
Central  
duPont Manual  
Highview Baptist  
Iroquois  
Male  
Mercy Academy  
Moore  
Portland Christian  
Presentation  
Southerm  
Walden

### REGION V

Bellevue  
Bishop Brossart  
Boone County  
Bracken County  
Campbell County  
Conner  
Dayton  
Highlands  
Newport  
Newport Catholic  
Ryle  
Walton-Verona

### REGION III

Assumption  
Atherton  
Ballard  
Christian Academy  
Eastern  
Fem Creek  
Jeffersontown  
Ky. Country Day  
Oldham County  
Sacred Heart  
Seneca  
South Oldham  
Waggener

### REGION VI

Fort Knox  
Franklin County  
Oneida Baptist  
Paul Blazer  
Rowan County  
Russell  
Scott County  
Western Hills  
Whitesburg  
Woodford County  
\* Boyle County  
\* Bryan Station  
\* Henry Clay  
\* Paul Dunbar  
\* Tates Creek

\* New schools this year may or may not be in regional tournament play.

NOTE: If more teams are added, they will be placed in one of the above regions.

## REGIONAL SITES

### Region

Region I  
Region II  
Region III  
Region IV  
Region V  
Region VI

### Site

Butler  
Moore  
Seneca  
Simon Kenton  
Newport Catholic  
Woodford County

### Manager

Butch Blakely  
Bob Ball  
Paul Callahan  
Jerry Scaringi  
Bob Schneider  
Steve Williams

## State Tournament

October 29-30, 1993  
Fairdale High School  
Fairdale, Kentucky



# 1993 Boys' Regional Golf Alignment

## REGION I

Ballard Memorial, Caldwell County, Calloway County, Christian County, Crittenden County, Fort Campbell, Fulton City, Fulton County, Graves County, Heath, Hickman County, Hopkinsville, Livingston Central, Lone Oak, Lyon County, Marshall County, Mayfield, Murray, Paducah Tilghman, Reidland, St. Mary, Todd County Central, Trigg County, University Heights

## REGION II

Apollo, Breckinridge County, Butler County, Daviess County, Dawson Springs, Hancock County, Henderson County, McLean County, Madisonville-North Hopkins, Muhlenberg North, Muhlenberg South, Ohio County, Owensboro, Owensboro Catholic, Providence, South Hopkins, Union County, Webster County, West Hopkins

## REGION III

Allen County, Barren County, Bowling Green, Caverna, Clinton County, Cumberland County, Edmonson County, Franklin-Simpson, Glasgow, Grayson County, Greenwood, Hart County, Logan County, Metcalfe County, Monroe County, Russellville, Warren Central, Warren East

## REGION IV

Bourbon County, Bryan Station, Eminence, Frankfort, Franklin County, George Rogers Clark, Harrison County, Henry Clay, Henry County, Lafayette, Lexington Catholic, Lexington Christian, Millersburg Military Institute, Montgomery County, Nicholas County, Oldham County, Paris, Paul Dunbar, Sayre, Scott County, Shelby County, South Oldham, Tates Creek, Western Hills, Woodford County, Woodbridge

## REGION V

Adair County, Anderson County, Bardstown, Bethlehem, Boyle



*Photo by Greg Ean*

**Aleshia Warren of Central Hardin chips this ball from the fringe during the 1992 State Golf Championship. Warren finished third after finishing runner-up the prior two seasons.**

County, Burgin, Campbellsville, Casey County, Danville, Garrard County, Green County, Harrodsburg, Jessamine County, LaRue County, Lincoln County, Marion County, Mercer County, Nelson County, Russell County, Taylor County, Washington County

## REGION VI

Bullitt Central, Bullitt East, Butler, Central, Central Hardin, DeSales, Doss, Elizabethtown, Evangel,

Fairdale, Fort Knox, Holy Cross Iroquois, Meade County, North Bullitt, North Hardin, Pleasure Ridge Park, Shawnee, Southern, Spence County, Valley, Western

## REGION VII

Atherton, Ballard, Christian Academy, DuPont Manual, Eastern, Ferris Creek, Highview Baptist, Jeffersontown, Kentucky Country Day, Louisville Collegiate, Male

(See BOYS' GOLF, Page 18)

# Boys' Golf Managers

**REGION I**  
 Bob Whiting  
 180 Idlewild Court  
 Paducah, Ky.  
 502-442-9392 (H)  
 502-443-0946 (W)

**REGION VII**  
 Marty Donlon  
 St. Xavier H.S.  
 1609 Poplar Level Road  
 Louisville, Ky. 40217  
 502-637-4712 (W)  
 502-447-7063 (H)

**REGION II**  
 Robert D. Cox  
 Breckinridge County H.S.  
 Rt. 1, Box 130  
 Hamed, Ky. 40144  
 502-756-2149

**REGION VIII**  
 Rick Homsby  
 Covington Catholic H.S.  
 1600 Dixie Highway  
 Covington, Ky. 41011  
 606-431-5351 (W)  
 606-341-8938 (H)

**REGION III**  
 Danny Spillman  
 1914 Harvey Ave.  
 Bowling Green, Ky. 42101  
 502-781-3141 (W)  
 502-781-2254 (H)

**REGION IX**  
 Jeff Schulkens  
 Newport Catholic H.S.  
 13 Carothers Rd.  
 Newport, Ky. 41071  
 606-292-0003 (W)  
 606-635-9691 (H)

**REGION IV**  
 Lewis William  
 George Rogers Clark H.S.  
 620 Boone Ave.  
 Winchester, Ky. 40391  
 606-744-6111  
 606-744-7397

**REGION X**  
 Jeff Littrell  
 Somerset H.S.  
 305 College Street  
 Somerset, Ky. 42501  
 606-678-4721 (W)  
 606-678-8400 (H)

**REGION V**  
 Freddie Leathers  
 619 George St.  
 Lebanon, Ky. 40033  
 502-692-6066 (W)  
 502-692-4433 (H)

**REGION XI**  
 Nelson H. Gullett  
 HC 87, Box 1210  
 Paintsville, Ky. 41240  
 606-789-6612

**REGION VI**  
 Tasso Harris  
 Valley H.S.  
 10200 Dixie Highway  
 Louisville, Ky. 40272  
 502-473-8621  
 502-937-6156

**\*STATE MANAGER**  
 Marty Donlon  
 St. Xavier H.S.  
 1609 Poplar Level Rd.  
 Louisville, Ky. 40217  
 502-637-4712 (W)  
 502-447-7063 (H)

**\*COORDINATOR**  
 Mike Donahoe  
 Ky. Golf Association  
 P.O. Box 18396  
 4109 Bardstown Rd., Suite SA  
 Louisville, Ky. 40220-0396  
 502-499-7255

# Girls' State Managers

**REGION I**  
 Judy Muehleman  
 Murray H.S.  
 501 Doran Road  
 Murray, Ky. 42071  
 502-753-5202 (W)  
 502-753-4126 (H)

**REGION V**  
 Gran Mefford  
 Owen County H.S.  
 Route 4  
 Owenton, Ky. 40359  
 502-484-2715 (W)  
 502-484-2121 (H)

**REGION II**  
 Teresa Ashby  
 Mad.-North Hopkins H.S.  
 4515 Hanson Road  
 Madisonville, Ky. 42431  
 502-825-6017

**REGION VI**  
 Lou Brown  
 Jessamine County H.S.  
 Route 4  
 Nicholasville, Ky. 40356  
 606-887-2421

**REGION III**  
 Pat Wise  
 Elizabethtown H.S.  
 620 North Mulberry St.  
 Elizabethtown, Ky. 42701  
 502-769-3381 (W)  
 502-543-8484 (H)

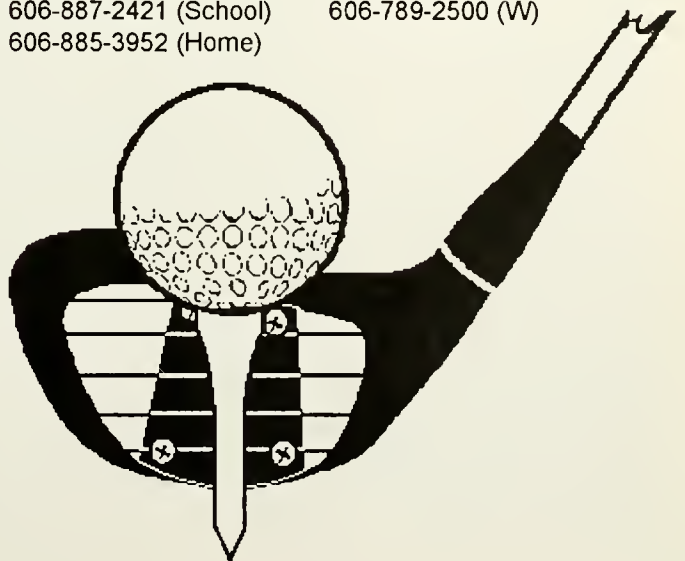
**REGION VII**  
 Mike Stratton/Jackie Pence  
 Lincoln County H.S.  
 U.S. 27 South  
 Stanford, Ky. 40484  
 606-365-9111 (W)  
 606-268-4513 (H)

**REGION IV**  
 Prentha Clements  
 80 Cottentail Circle  
 Alvaton, Ky. 42122  
 502-842-1674 (W)  
 502-843-8730 (H)

**REGION VIII**  
 Lowell G. King  
 Montgomery County H.S.  
 724 Woodford Drive  
 Mt. Sterling, KY 40353  
 606-497-8765 (W)  
 606-498-6123 (H)

**STATE MANAGER**  
 Lou Brown  
 Jessamine County H.S.  
 Route 4  
 Nicholasville, Ky. 40356  
 606-887-2421 (School)  
 606-885-3952 (Home)

**REGION IX**  
 Cathy Gullett  
 HC 87, Box 1210  
 Paintsville, Ky. 41240  
 606-789-6612 (H)  
 606-789-2500 (W)



# Girls' Regional Golf Alignment

(Boys' Golf, From Page 16)

## REGION I

Ballard Memorial, Caldwell County, Calloway County, Crittenden County, Fulton City, Graves County, Heath, Hickman County, Lone Oak, Marshall County, Mayfield, Murray, Paducah Tilghman, Reidland, St. Mary, Trigg County

## REGION II

Apollo, Christian County, Daviess County, Dawson Springs, Fort Campbell, Henderson County, Hopkinsville, Madisonville-North Hopkins, McLean County, Muhlenberg North, Muhlenberg South, Owensboro, Owensboro Catholic, Providence, South Hopkins, Todd County Central, Union County, University Heights, Webster County

## REGION III

Assumption, Ballard, Bardstown, Bethlehem, Butler County, Central, Central Hardin, Doss, Dupont Manual, Elizabethtown, Fairdale, Fort Knox, Grayson County, Hancock County, Jeffersontown, Ky. Country Day, LaRue County, Louisville Collegiate, Male, Meade County, Mercy, Moore, Nelson County, North Hardin, Ohio County, Pleasure Ridge Park, Presentation, Sacred Heart, Seneca, Shawnee, St. Francis, Valley, Waggener, Walden, Western

## REGION IV

Allen County, Barren County, Bowling Green, Caverna, Cumberland County, Franklin-Simpson, Glasgow, Green County, Greenwood, Hart County, Logan County, Metcalfe County, Monroe County, Russellville, Warren Central

## REGION V

Boone County, Carroll County, Campbell County, Dayton, Dixie Heights, Eminence, Gallatin County, Henry County, Highlands, Holmes, Holy Cross, Oldham County, Owen County, Notre Dame, Ryle, Scott,

Simon Kenton, South Oldham, Trimble County, Villa Madonna

## REGION VI

Anderson County, Bryan Station, Frankfort, Franklin County, Henry Clay, Jessamine County, Lafayette, Lexington Catholic, Lexington Christian, Paul Dunbar, Scott County, Shelby County, Tates Creek, Western Hills, Woodford County

## REGION VII

Adair County, Bell County, Boyle County, Burgin, Casey County, Clinton County, Corbin, Garrard County, Harrodsburg, Knox Central, Lincoln County, McCreary Central, Marion County, Mercer County, Monticello, North Laurel, Pineville, Pulaski County, Pulaski Southwestern, Russell County, Somerset, South Laurel, St. Camillus, Taylor County, Washington County, Wayne County, Whitley County

## REGION VIII

Augusta, Berea, Bracken County, Estill County, Fleming County, George Rogers Clark, Grant County, Harrison County, Madison Central, Madison Southern, Mason County, Model, Montgomery County, Nicholas County, Paris, Powell County, St. Patrick, Williamstown

## REGION IX

Boyd County, Cawood, Clay County, Cumberland, Elkhorn City, Harlan, Jackson County, Johnson Central, Lee County, McDowell, Morgan County, Paintsville, Paul Blazer, Pikeville, Prestonsburg, Raceland, Rowan County, Russell, Sheldon Clark, Whitesburg, Wolfe County

Moore, St. Francis, St. Xavier, Seneca, Trinity, Waggener, Walden

## REGION VIII

Beechwood, Boone County, Carroll County, Conner, Covington Catholic, Covington Latin, Dixie Heights, Gallatin County, Holmes, Holy Cross, Lloyd Memorial, Ludlow, Owen County, Ryle, St. Henry, Scott, Simon Kenton, Trimble County, Villa Madonna, Walton-Verona

## REGION IX

Augusta, Bellevue, Bishop Brossart, Bracken County, Campbell County, Dayton, Fleming County, Grant County, Highlands, Lewis County, Mason County, Newport, Newport Central Catholic, Pendleton County, Silver Grove, St. Patrick, Tollesboro, Williamstown

## REGION X

Barbourville, Berea, Bell County, Cawood, Clay County, Corbin, Cumberland, Estill County, Harlan, Jackson County, Knox Central, Lee County, McCreary Central, Madison Central, Madison Southern, Middlesboro, Model, Monticello, North Laurel, Oneida Baptist Institute, Pineville, Pulaski County, Pulaski Southwestern, Rockcastle County, Somerset, South Laurel, St. Camillus, Wayne County, Whitley County

## REGION XI

Bath County, Belfry, Betsy Layne, Boyd County, East Carter, Fairview, Hazard, Greenup County, Elkhorn City, Jenkins, Johnson Central, June Buchanan, Knott County Central, Lawrence County, Morgan County, Owsley County, Paintsville, Paul Blazer, Phelps, Pike County Central, Pikeville, Powell County, Prestonsburg, Raceland, Rose Hill, Rowan County, Russell, Shelby Valley, Sheldon Clark, South Floyd, West Carter, Whitesburg, Wolfe County

# Boys' Cross Country Regional Alignment

## CLASS A (0-434)

### Region I

Manager: *Buddy Perry, Trigg Co. H.S., 203 Main Street, Cadiz 42211 (502) 522-2200*

Ballard Memorial, Butler Co., Crittenden Co., Dawson Springs, Frederick Fraize, Fulton City, Fulton Co., Heath, Hickman Co., Lyon Co., Providence, South Hopkins, St. Mary, Trigg Co., University Heights, West Hopkins, Webster Co.

### Region II

Manager: *David Shufelt, Fort Knox H.S., 7501 Missouri Street, Fort Knox 40121 502-624-7030*

Bardstown, Beth Haven, Bethlehem, Brown, Caverna, Christian Aca., Cumberland Co., Evangel, Ft. Knox, Green Co., Hancock Co., Highview Baptist, Ky. Country Day, Louisville Collegiate, Metcalfe Co., Portland Christian, Spencer Co., St. Francis, Trimble Co.,

### Region III

Manager: *Barry Binkley, Dayton H.S., 200 Jackson Street, Dayton 41074 606-261-4357*

Augusta, Bellevue, Bishop Brossart, Covington Latin, Dayton, Fairview, Holy Cross (Covington), Lloyd Memorial, Ludlow, Newport Central Catholic, Raceland, Silver Grove, St. Henry, Walton-Verona

### Region IV

Manager: *Frank Miklavcic, Frankfort H.S., 328 Shelby Street, Frankfort 40601 502-223-8030*

Bath Co., Burgin, Carroll Co., Central Kentucky Christian, Frankfort, Gallatin Co., Henry Co., Lexington Catholic, Lexington Christian, Living Waters, Millersburg Military Institute, Nicholas Co., Owen Co., Paris, Williamstown, Noodbridge Academy

### Region V

Manager: *Tommy Collins, Oneida Baptist Institute, Mulberry Street, Oneida 40972 606-847-4111*

Allen Central, Buckhorn, Cordia, Dilce Combs, Elliott Co., Fleming-Neon, Hazard, Jenkins, Lee Co., Letcher, McDowell, Menifee Co., Oneida Baptist, Owsley Co., Paintsville, Pikeville, Red Bird, Riverside Christian, Wolfe Co.,

### Region VI

Manager: *E.G. Plummer, Danville H.S.,*

*203 E. Lexington Ave., Danville, 40422 (606) 238-1327*

Berea, Cumberland, Danville, Evarts, Garrard Co., Harlan, Harrodsburg, Model, Monticello, Somerset, St. Camillus, Williamsburg

## CLASS AA (435-799)

### Region I

Manager: *Rogers Powell, Allen Co.-Scottsville, PO Box 127, Highway 231, Scottsville 42164 (502) 622-6344*

Allen Co., Ft. Campbell, Franklin-Simpson, Greenwood, Monroe Co., Owensboro, Owensboro Catholic, Paducah Tilghman, Union Co., Warren East, Warren Central, Bowling Green.

### Region II

Manager: *David Shufelt, Fort Knox H.S., 7501 Missouri Street, Fort Knox 40121 502-624-7030*

Barren Co., Breckinridge Co., Edmonson Co., Elizabethtown, Glasgow, Hart Co., LaRue Co., Logan Co., Muhlenburg North, Muhlenburg South

### Region III

Manager: *Barry Binkley, Dayton H.S., 200 Jackson Street, Dayton 41074 606-261-4357*

Conner, Cov. Catholic, Dixie Heights, Grant Co., Highlands, Mason Co. Newport, Pendleton Co., Ryle, Scott, Simon Kenton

### Region IV

Manager: *Frank Miklavcic, Frankfort H.S., Frankfort 40601*

Anderson Co., Bourbon Co., Estill Co., Franklin Co., Harrison Co., Mercer Co., Oldham Co., South Oldham, Western Hills, Woodford Co.

### Region V

Manager: *Bob Stacey, Boyd Co. H.S., 12307 Midland Trail, Ashland 41102 606-928-6475*

Breathitt Co., E. Carter, Fleming Co., Jackson Co., Knott Co., Lawrence Co., Paul Blazer, Pike Co. Central, Prestonsburg, Rowan Co., Russell, Sheldon Clark, South Floyd, W. Carter, Whitesburg

### Region VI

Manager: *E.G. Plummer, Danville H.S., 203 E. Lexington Ave., Danville, 40422 (606) 238-1327*

Adair Co., Boyle Co., Casey Co.,

Cawood, Clay Co., Corbin, McCreary Central, Madison Southern, Marion Co., Middlesboro, Taylor Co., Wayne Co.

## CLASS AAA (800+)

### Region I

Manager: *Bill Farrell, Christian Co. H.S., 220 Glass Ave., Hopkinsville, 42240 502-887-1109*

Apollo, Central Hardin, Christian Co., Daviess Co., Graves Co., Grayson Co., Henderson Co., Hopkinsville, Madisonville-North Hopkins, Marshall Co., North Hardin

### Region II

Manager: *Bro. Borgia, St. Xavier H.S., 1609 Poplar Level Road, Louisville 40217*  
Assumption, Atherton, Butler, Central, duPont Manual, Iroquois, Male, Shawnee, Shelby Co., St. Xavier

### Region III

Manager: *Rich Rostel, Trinity H.S., 4011 Shelbyville Road, Louisville 40207 502-895-6765*

Ballard, Eastern, Fern Creek, Jeffersontown, Meade Co., Moore, Seneca, Trinity, Waggener

### Region IV

Manager: *John Nason, Southern H.S., 8620 Preston Hwy, Louisville, 40219 502-473-8439*

Bullitt Central, DeSales, Doss, Fairdale, Holy Cross, Pleasure Ridge Park, North Bullitt, Southern, Valley, Western

### Region V

Manager: *Bob Stacey, Boyd Co. H.S., 12307 Midland Trl. Rd., Ashland 41102 606-928-6475*

Boone Co., Boyd Co., Campbell Co., George Rogers Clark, Greenup Co., Holmes, Johnson Central, Scott Co.,

### Region VI

Manager: *E.G. Plummer, Danville H.S., 203 E. Lexington Ave., Danville, 40422 606-238-1327*

Bell Co., Bryan Station, Henry Clay, Jessamine Co., Knox Central, Lafayette, Lincoln Co., M.C. Napier, Madison Central, Montgomery Co., Nelson Co., North Laurel, Paul Dunbar, Pulaski Co., Pulaski Southwestern, Rockcastle Co., South Laurel, Tates Creek, Whitley Co.

# Girls' Cross Country Regional Alignment

**CLASS A (0-435)**

**Region I**

*Manager: Buddy Perry, Trigg Co. H.S., 203 Main Street, Cadiz, 42211 502-522-2200*

Ballard Memorial, Butler Co., Crittenden Co., Dawson Springs, Fulton, Fulton Co., Heath, Hickman Co., Providence, S. Hopkins, St. Mary, Trigg Co., University Heights, W. Hopkins, Webster Co.

**Region II**

*Manager: David Shufelt, Fort Knox H.S., 7501 Missouri Street, Fort Knox 40121 502-624-7030*

Bardstown, Beth Haven, Bethlehem, Brown, Caverna, Christian Aca., Ft. Knox, Green Co., Hancock Co., Highview Baptist, Ky. Country Day, Louisville Collegiate, Metcalfe Co., Monroe Co., Portland Christian, Spencer Co., St. Francis, Trimble Co., Trinity (Whitesville), Washington Co., Holy Rosary

**Region III**

*Manager: Barry Binkley, Dayton H.S., 200 Jackson Street, Dayton 41074 606-261-4357*

Augusta, Bellevue, Bishop Brossart, Bracken Co., Cov. Latin, Dayton, Fairview, Holy Cross (Cov.), Lloyd Memorial, Ludlow, Newport Catholic, Race-land, Silver Grove, St. Henry, Villa Madonna, Walton-Verona

**Region IV**

*Manager: Frank Miklavcic, Frankfort H.S., 328 Shelby St., Frankfort 40601 502-223-8030*

Bath Co., Burgin, Carroll Co., Central Ky. Christian, Frankfort, Gallatin Co., Henry Co., Lexington Catholic, Lexington Christian, Living Waters, Nicholas Co., Owen Co., Williamstown, Woodbridge Academy

**Region V**

*Manager: Tommy Collins, Oneida Baptist Institute, Mulberry Street, Oneida 40972 606-847-4111*

Allen Central, Buckhorn, Cordia, Dilce Combs, Elliott Co., Fleming-Neon, Hazard, Jenkins, J. Buchanan, Lee Co., Letcher Co., McDowell, Menifee Co., Mullins, Oneida Baptist, Owsley Co., Paintsville, Riverside Christian, Wolfe Co.

**Region VI**

*Manager: E.G. Plummer, Danville H.S.,*

*203 E. Lexington Ave., Danville 40422 606-238-1327*

Berea, Cumberland, Danville, Evarts, Garrard Co., Harlan, Harrodsburg, Ky. School f/t Deaf, Model, Monticello, Somerset, St. Camillus, Williamsburg

**CLASS AA (435-799)**

**Region I**

*Manager: Rogers Powell, Allen Co.-Scottsville, PO Box 127, HWY 231, Scottsville 42164*

Allen Co., Calloway Co., Ft. Campbell, Franklin-Simpson, Greenwood, Paducah Tilghman, Owensboro, Owensboro Catholic, Union Co., Warren Central, Warren East, Bowling Green

**Region II**

*Manager: David Shufelt, Fort Knox H.S., 7501 Missouri Street, Fort Knox 40121 606-624-7030*

Barren Co., Breckinridge Co., Elizabethtown, Edmonson Co., Glasgow, Hart Co., LaRue Co., Logan Co., Muhlenberg North, Muhlenburg South

**Region III**

*Manager: Barry Binkley, Dayton H.S., 200 Jackson Street, Dayton 41074 606-261-4357*

Conner, Dixie Heights, Grant Co., Highlands, Mason Co., Newport, Notre Dame, Pendleton Co., Ryle, Scott, Simon Kenton

**Region IV**

*Manager: Frank Miklavcic, Frankfort H.S., Frankfort 40601*

Anderson Co., Bourbon Co., Estill Co., Franklin Co., Harrison Co., Mercer Co., Oldham Co., S. Oldham, Western Hills, Woodford Co.

**Region V**

*Manager: Bob Stacey, Boyd Co. H.S., 12307 Midland Trail, Ashland 41102 606-928-6475*

Boyd Co., Breathitt Co., E. Carter, Fleming Co., Jackson Co., Knott Co. Central, Lawrence Co., Paul Blazer, Pike Co. Central, Prestonsburg, Rowan Co., Russell, Sheldon Creek, S. Floyd, W. Carter, Whitesburg

**Region VI**

*Manager: E.G. Plummer, Danville H.S., 203 E. Lexington Ave., Danville 40422 606-238-1327*

Adair Co., Boyle Co., Cawood, Clay

Co., Corbin, McCreary Central, Madison Southern, Marion Co., Middlesboro, Taylor Co., Wayne Co.

**CLASS AAA (800+)**

**Region I**

*Manager: Bill Farrell, Christian Co. H.S., 220 Glass Ave., Hopkinsville 42240 502-887-1109*

Apollo, Central Hardin, Christian Co., Daviess Co., Henderson Co., Hopkinsville, Graves Co., Grayson Co., Mad-North Hopkins, Marshall Co., N. Hardin

**Region II**

*Manager: Bro. Borgia, St. Xavier H.S., 1609 Poplar Level Road, Louisville 40217 502-637-4712*

Atherton, Butler, Central, duPont Manual, Iroquois, Male, Presentation Academy, Sacred Heart, Shawnee, Shelby Co.

**Region III**

*Manager: Rich Rostel, Trinity H.S., 4011 Shelbyville Road, Louisville 40207 502-895-6765*

Assumption, Ballard, Eastern, Fern Creek, Jeffersonstown, Meade Co., Moore, Seneca, Waggenger

**Region IV**

*Manager: John Nason, Southern H.S., 8620 Preston HWY, Louisville 40219 502-473-8439*

Bullitt Central, Doss, Fairdale, Holy Cross, Mercy Academy, North Bullitt, PRP, Southern, Valley, Western

**Region V**

*Manager: Bob Stacey, Boyd Co. H.S., 12307 Midland Trail, Ashland 41102 606-928-6475*

Boone Co., Boyd Co., Campbell Co., George Rogers Clark, Greenup Co., Holmes, Johnson Central, Scott Co.,

**Region VI**

*Manager: E.G. Plummer, Danville H.S., 203 E. Lexington Ave., Danville 40422 606-238-1327*

Bell Co., Bryan Station, Henry Clay, Jessamine Co., Knox Central, Lafayette, Lincoln Co., M.C. Napier, Madison Central, Montgomery Co., Nelson Co., N. Laurel, Paul Dunbar, Pulaski Co., Pulaski Southwestern, Rockcastle Co., S. Laurel, Pulaski Co., Tates Creek, Whitley Co.

# 1993 Boys' & Girls' Soccer Alignment

## BOYS

### REGION 1

District 1: Heath, Lone Oak, Paducah Tilghman, Reidland, St. Mary  
 District 2: Caldwell Co., Calloway Co., Lyon Co., Marshall Co., Murray  
 District 3: Christian Co., Ft. Campbell, Hopkinsville, Madisonville-N. Hopkins, Trigg Co., University Heights

### REGION 2

District 4: Apollo, Daviess Co., Owensboro, Owensboro Catholic, Henderson Co.  
 District 5: Muhlenburg North, Muhlenburg South, Russellville, Warren Central, Warren East

District 6: Bowling Green, Glasgow, Greenwood

District 7: Central Hardin, Elizabethtown, Ft. Knox, Meade Co., North Hardin

### REGION 3

District 8: Butler, Doss, Fairdale, Holy Cross, Pleasure Ridge Park, Southwest Christian

District 9: Central, duPont Manual, Male, St. Xavier

District 10: DeSales, Evangel, Iroquois, Moore, Southern, St. Francis

### REGION 4

District 11: Fern Creek, Highview

Baptist, Jeffersonton, Seneca, Waggener

District 12: Ballard, Eastern, Kentucky Country Day, Walden

District 13: Atherton, Christian Academy, Louisville Collegiate, Trinity

### REGION 5

District 14: Oldham Co., Shelby Co., South Oldham

District 15: Bardstown, Bethlehem, Bullitt Central, Bullitt East, Nelson Co., North Bullitt

District 16: Anderson Co., Frankfort, Franklin Co., Western Hills

District 17: Bourbon Co., Harrison Co., Paris, Scott Co.

### REGION 6

District 18: Berea, Madison Central, Madison Southern, Model

District 19: Boyle Co., Danville, Jessamine Co., Lincoln Co., Woodford Co.

District 20: Paul Dunbar, Lafayette, Lexington Catholic, Lexington Christian

District 21: Bryan Station, Henry Clay, Sayre, Tates Creek

### REGION 7

District 22: Boone Co., Conner, Grant Co., Ryle, St. Henry

District 23: Dixie Heights, Pendleton Co., Scott, Simon-Kenton

District 24: Bishop Brossart, Campbell Co., Highlands, Newport Cen-

tral Catholic

District 25: Covington Catholic, Covington Latin, Holmes, Holy Cross, Ludlow

### REGION 8

District 26: Clark Co., Mason Co., Menifee Co., Montgomery Co., Powell Co., Rowan Co.

District 27: North Laurel, South Laurel, Oneida Baptist, Pulaski Co., Somerset, St. Camillus, South West Pulaski, Corbin

District 28: Boyd Co., E. Carter, Paul Blazer, Rose Hill, Russell

## GIRLS

### SECTION 1

#### REGION 1:

Apollo, Calloway County, Daviess County, Heath, Henderson County, Lone Oak, Paducah, Madisonville-North Hopkins, Marshall County, Murray, Reidland, St. Mary

#### REGION 2:

Assumption, Atherton, Central Hardin, Fort Knox, Male, North Hardin, Manual, Holy Rosary

### SECTION 2

#### REGION 3:

Ballard, Eastern, Mercy, Oldham County, Sacred Heart, South Oldham

#### REGION 4:

Boone County, Dixie Heights, Ludlow, Ryle, Simon Kenton, St. Henry, Connor, Villa Madonna

### SECTION 3

#### REGION 5:

Bishop Brossart, Campbell County, Highlands, Holmes, Holy Cross, Newport Central Catholic, Notre Dame, Scott

#### REGION 6:

Mason County, Montgomery County, Pendleton County, Rowan County

### SECTION 4

#### REGION 7:

Jessamine County, Lafayette, Lexington Catholic, Paul Dunbar, Woodford County

#### REGION 8:

Bourbon County, Bryan Station, Henry Clay, Madison Central, Sayre, Tates Creek



File Photo

Notre Dame's Melissa Haarberg (left) battles Lafayette's Christy Goff in the Girls' First State Championship in 1992. Lafayette won 1-0.

## Open Dates

### BOYS' BASKETBALL

#### BOYD COUNTY

Hall of Fame Tourney, Nov. 26  
 Jan. 7-8 (Home)  
 Feb. 8 (Home)  
 Contact David R. Bayes, A.D.  
 (606) 928-6475

#### ROWAN COUNTY

Dec. 22 (Home)  
 Feb. 1 (Home)  
 Contact Claudia Hicks  
 (606) 784-8956

#### SHELDON CLARK

Feb. 11, 12, 22  
 Contact Sam Sparks  
 (606) 298-3591

#### TRINITY WHITESVILLE

Jan. 14-15 (Boys/Girls)  
 Contact Larry Farmer  
 (502) 233-5184

### FOOTBALL

#### COLUMBUS NORTH (Indiana)

Sept. 17, 1994  
 Contact Bill Stearman  
 (812) 376-4431

### COACHING VACANCY

#### ASSUMPTION

Accepting Applications:  
*Girls' Varsity Basketball Coach*  
 Contact Carolyn Medley, A.D.  
 (502) 458-6327

## KHSADA Awards Four

LOUISVILLE--The Kentucky High School Athletic Directors Association and the Pepsi Cola Bottlers of Kentucky formed a partnership in 1987 to establish a scholarship fund for the student-athletes in Kentucky. The KHSADA developed a committee to gather nominations from across the state for this scholarship money.

Pepsi has donated, as of this year, \$24,000 toward 24 scholarship winners.

The 1992-93 winners, who received their awards at the Kentucky/Indiana All-Star game in Louisville this past June, are A.D. of the Year Paul Dennison (Western), Coach of the Year Owen Hauck (Boone County), Male Athlete of the Year Aaron McDowell (Lafayette) and Female Athlete of the Year Dana Cox (Scott).

## KENTUCKY STATE UNIVERSITY

### Head Women's Basketball & Volleyball Coach

(Open Immediately)

#### Qualifications

Master's Degree. Three years of collegiate coaching experience or seven years of high school coaching experience. Proven ability to recruit and retain academically and athletically qualified student-athletes. Working knowledge and understanding of NCAA policies/rules is a necessity. Demonstrated success as a head coach is required.

Responsibilities: Plan, organized and direct all activities relative to the women's basketball and volleyball programs (recruiting, practice, organization, budgeting, planning and coordinating team travel, scheduling). Salary Range: \$24,000 - \$28,000. Applications: Send letter of application, resume, graduate transcripts and three current letters of reference to: D.W. Lyons, Athletics Director, Box 121, Kentucky State University, Frankfort, KY 40601. Applications Deadline: Applications will be accepted until position is filled.

Kentucky State University is the unique small liberal studies institution in the Commonwealth's higher education system. The University provides educational experiences to 2,500 students. Augmenting the academic program at the University is the extracurricular program which includes intercollegiate athletics. Kentucky State University is an Equal Opportunity/Affirmative Action Employer.

**LOWE'S**  
SPORTING GOODS, INC.  
*"Athletic Specialist"*

**NIKE** THE CHOICE OF  
THE  
"YOUNG Generation!"

Choose the best shoe  
for your team and  
**CALL FOR Team  
PRICING.**



*Aid Force Mid.*



*Air Ascension Force High*





# The best ankle brace is now even better!

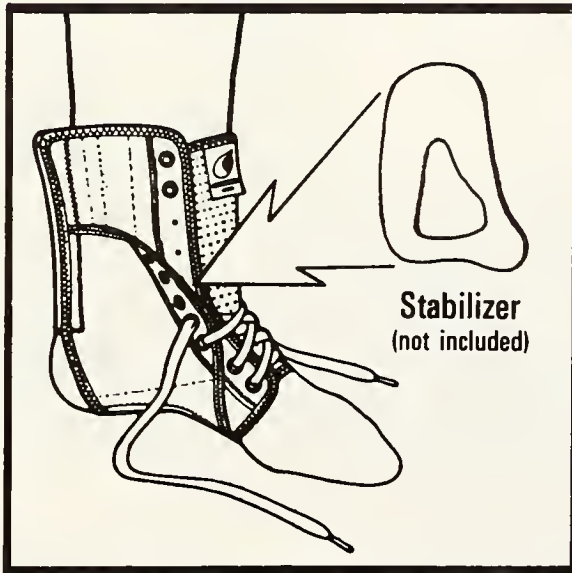


SWEDE-O-UNIVERSAL

Swede-O-Universal introduces an all-new concept...the "Knit Tongue"

This unique brace actually has three improvements:

- the knit tongue in front
- longer elastic in the back
- a reconfigured stabilizer



Your benefits from these new features include:

- a snug fit while lacing
- less bulk, fits even better inside the shoe
- greater comfort for the achille's tendon
- easier to insert stabilizers, greater comfort for calcaneus

**Now \$19.95**

Stabilizers  
\$3.90 Pair

*Richard's*

233 W. Main  
Glasgow, KY 42142-1898  
1-800-274-4373

Kentucky High School Athletic Association  
2280 Executive Drive  
Lexington, Kentucky 40505

Non-Profit Org.  
U.S. Postage  
PAID  
Richmond, KY  
Permit No. 108