

3-1-1941

The Kentucky High School Athlete, March 1941

Kentucky High School Athletic Association

Follow this and additional works at: <http://encompass.eku.edu/athlete>

Recommended Citation

Kentucky High School Athletic Association, "The Kentucky High School Athlete, March 1941" (1941). *The Athlete*. Book 423.
<http://encompass.eku.edu/athlete/423>

This Article is brought to you for free and open access by the Kentucky High School Athletic Association at Encompass. It has been accepted for inclusion in The Athlete by an authorized administrator of Encompass. For more information, please contact Linda.Sizemore@eku.edu.



THE KENTUCKY



High School Athlete

BASKETBALL IDES OF MARCH



[1]

The gym lights gleam like a beacon beam
 And a million motors hum
 In a good will flight on a Friday night;
 For basketball beckons, "Come!"
 A sharp-shooting mite is king tonight.
 The Madness of March is running.
 The winged feet fly, the ball sails high
 And field goal hunters are gunning.

[2]

The colors clash as silk suits flash
 And race on a shimmering floor.
 Repressions die, and partisans vie
 In a goal acclaiming roar.
 On Championship Trail toward a holy
 goal,
 All fans are birds of a feather.
 It's fiesta night and cares lie light
 When the air is full of leather.

[3]

Since time began, the instincts of man
 Prove cave and current men kin.
 On tournament night the sage and the
 wight
 Are relatives under the skin.
 It's festival time—sans reason or rhyme.
 But with nation-wide appeal.
 In a cyclone of hate, our ship of state
 Rides high on an even keel.

[4]

With war nerves tense, the final
 defense
 Is the courage, strength and will
 In a million lives where freedom
 thrives
 And liberty lingers still.
 Let dictators clash and empires crash
 'Neath a bloody victory arch!
 Let our boys tread where hate is dead,
 In this happy Madness of March!

—H. V. PORTER



Official Organ of the KENTUCKY HIGH SCHOOL ATHLETIC ASSOCIATION

MARCH - 1941



State Tournament Facts

1940 State Champions . . . Hazel Green

1940 Runner-Up Ashland

* * * * *

- - Date - -

- - Place - -

March 20 - 21 - 22, 1941

University of Kentucky Gym

* * * * *

Schedule

Thursday Morning, 10 o'clock and 11 o'clock.....Admission 75c

Thursday Afternoon - 2:30, 3:30 and 4:30.....Admission 75c

Thursday Evening - 7:30, 8:30, and 9:30.....Admission 75c

Friday Afternoon - 2:00 and 3:00.....Admission 75c

Friday Evening - 7:30 and 8:30.....Admission 75c

SEMI-FINALS

Saturday Afternoon - 2:00 and 3:00.....Admission 75c

FINALS and CONSOLATION

Saturday Evening - Consolation 8:30, Finals 9:45....Adm. \$1.00

* * * * *

RESERVED SEATS for all sessions - 25c above quoted prices

* * * * *

*Officials will be selected by the Coaches of the
16 Participating Teams*

The Kentucky High School Athlete

Official Organ of the
Kentucky High School Athletic Association

Vol. III - No. 8.

MARCH, 1941

\$1.00 Per Year.

From the President's Office

TO TOURNAMENT MANAGERS:

The question of a Federal Tax on admissions to Tournament Games has been raised. Some have been under the impression that this tax must be paid; others have felt, have been told, in fact that schools are exempt from these payments. In order that we might proceed correctly in this matter we have contacted Mr. H. V. Porter, Secretary of the National Federation, who provides the following information which is a copy of a decision of the Deputy Commissioner of Revenue in Washington.

TREASURY DEPARTMENT
WASHINGTON

December 19, 1940.

National Federation of State High School
Athletic Associations
7 So. Dearborn St., Chicago, Ill.

Attention: H. V. Porter, Secretary.

Gentlemen:

In connection with the high schools and inter-scholastic athletic associations, the test for exemption in each case is whether all of the proceeds from admissions inure exclusively to the benefit of an educational organization. Admission charges to athletic games and other entertainments (except wrestling matches, prize fights, boxing, sparring, or other pugilistic matches) conducted by high schools are exempt from tax if all of the proceeds inure to the benefit of such high schools. This is true whether the proceeds are administered by the principal or other officials of the school itself or turned over to the treasurer or other officers of the board of education. Admission charges to affairs held by a club or organization among the students are not exempt from tax unless each club or organization qualifies as an educational or other exempt organization or unless the proceeds from admission are turned over to and inure to the benefit of the school.

As a general rule, it is held that State athletic associations, which are non-profit organizations formed the public high schools or grade schools for the purpose of conducting the athletics at the schools and arranging contests between the various schools, qualify as educational organizations, and that admission charges, the proceeds of which inure to the benefit of such athletic associations, are exempt from tax. In such cases, if the proceeds from admissions to the games or contests conducted under the auspices of the State high school athletic association go into the treasury of the association, rather than direct to the high schools, such association may secure from the collector certificates of exemption from collection of tax on all of such games. On the other hand, if the games or contests are arranged by the high schools themselves, the admission charges being collected by the high schools and the proceeds handled by the officials of the schools rather than the State athletic association, the high schools must secure exemption

certificates covering the games and contests conducted by them.

Respectfully,
D. S. BLISS, Deputy Commissioner.

Since this exemption has not been claimed for all of the tournaments it would be well for the Tournament Manager of each Tournament, both District, Regional, and State, to contact the local Department of Revenue and secure the proper exemption blanks, fill them out and see that they are filed. There is no case on record where the local collector has refused to grant the exemption when it has been applied for.

From the Secretary's Office

LATE REPORTS

For some reason, it is becoming increasingly more difficult for the secretary's office to secure the various reports which are to be filed by principals and officials. To date, almost half of the schools playing football in 1940 have failed to file their eligibility lists and reports on officials. Seventy-five per cent of the football officials who worked in games last fall have not filed their reports on schools. It is now time for principals and officials to file their basketball reports, but very few of these have come in. Although district tournament drawings were held several weeks ago, half of the districts have failed to report the names of their delegates and alternates. It is extremely important that all of these reports be filed at once in order that tabulations may be made and published in the magazine.

STATE TOURNAMENT OFFICIALS

The Board of Control at a recent meeting voted to submit the names of all resident Kentucky certified and approved officials to the coaches of the winning regional teams for balloting on the four state tournament officials. The coaches will be asked to vote for six officials, in order of their preference.

SUPPLEMENTARY LIST OF REGISTERED BASKETBALL OFFICIALS

Austin, Acree, Paducah Road, Mayfield.
Barney, Jim, 2629 Country Club Court, Ashland.
Fugate, James Wesley, Eddyville.
Hornback, Ted, 1740 Normal Drive, Bowling Green.
Jones, Kermit, London.
McDowell, James Wayne, Hare Route, E. Bernstadt.
Tanner, J. F., 260 Stokesay, Ludlow.
Tierney, Francis, Box 263, Olive Hill.
Wagner, George W., 440 Market Ave., Louisville.
Walker, Henry, 1001 E. Second Street, Maysville.
Wilson, Cyril Pete, 409 Eleventh Avenue, Huntington, W. Va.

SUPPLEMENTARY LIST OF "APPROVED" OFFICIALS

Braun, Robert
Wilson, Barney E.

MARCH, 1941 Vol. III - No. 8
 Published monthly, except June and July, by the Kentucky High School Athletic Association.

Office of Publication, Carrollton, Kentucky.
 Entered as second-class matter August 18, 1939, at the post office at Carrollton, Kentucky, under the Act of March 3, 1879.
 Editor.....RUSSELL E. BRIDGES
 32 Indiana Avenue, Fort Thomas, Kentucky

BOARD OF CONTROL

President.....W. F. O'Donnell, Richmond
 Vice-President.....Russell E. Bridges, Fort Thomas
 Secretary-Treasurer.....Theo. A. Sanford, Carrollton
 Directors — John A. Dotson, Benham; W. B. Owen, Horse Cave;
 J. Matt. Sparkman, Benton.
 Subscription Rates . . . \$1.00 Per Year.

STATEMENT

Of the ownership, management, etc., required by the Acts of Congress of August 24, 1912, and March 3, 1933, of The Kentucky High School Athlete, published monthly except June and July at Carrollton, Kentucky, for October 1, 1940.

Owner and Publisher, The Kentucky High School Athletic Association, Carrollton, Kentucky; Editor, Russell E. Bridges, Fort Thomas, Kentucky; Business Manager, Theo. A. Sanford, Carrollton, Kentucky.

Known bondholders, mortgagees, and other security holders owning or holding 1 per cent or more of total amount of bonds, mortgages, or other securities—None.

(Signed) Theo. A. Sanford, Business Manager.

Sworn to and subscribed before me this fourth day of November, 1940.

(Seal) Luther Fothergill
 Notary Public, Carroll County, Kentucky.
 My commission expires June 20, 1942.

PICTURES OF CHAMPIONS

See the inside back cover for the pictures of Champions and Runners-Up for the K. I. A. C. Tournament.

KENTUCKY COACHING SCHOOL

On another page will be found the announcement of the 1941 University of Kentucky Coaching School. Although no one has yet been engaged to handle 6-Man Football, Mr. Potter has said that the University will be quite willing to add this feature to the school if a sufficient number of the Kentucky High School Coaches express an interest.

Coaches: If you would like to have a specialist in 6-man football added to the staff of the Coaching School, will you please send a card to M. E. Potter, Head of the Department of Physical Education, University of Kentucky, Lexington, Ky.

THE POINT-OF-VIEW COLUMN

In the January Athlete we announced the inauguration of a Point-of-View Column in response to the request of several prominent coaches of the state. At this time we have had no contributions to that page. This may indicate that coaches have been so busy in preparing for tournaments that they have had no other "point-of-view." Now that the tournaments are passing and many of the teams have fallen by the way-side it is likely that coaches may be found who have an entirely different "point-of-view."

AN EXPERIMENT IN DEVELOPING GOOD SPORTSMANSHIP

Every school has its own method of building school spirit and team morale. It goes without saying that the spirit which pervades a school depends on the type of leadership contributed by coaches, principals

and teachers. Out at Niles Center Township High School Superintendent Cotanche has devised a plan which he thinks is showing results.

At each game a card on which is printed something of interest about the team, the coaching staff or the school is handed to each person who attends. On the same card is printed a few remarks on sportsmanship and school spirit. Excerpts from the cards are printed below.

The students of the Niles Township High School welcome you to our school and to this athletic contest. So that we may show our visiting team and officials the courtesy to which they are entitled, we are asking that you maintain these few simple rules of good Sportsmanship:

1. That you refrain from smoking in the building.
2. That you cheer good play by the visiting team as well as by the home team.
3. That you maintain silence while players of either team are throwing free throws. (Good sportsmanship demands this rule. The officials are privileged to call a technical foul on the home team if our fans break this rule.)
4. That you respect all decisions of the officials. (Booing of any decision tends to break down good sportsmanship.)

The Niles Township High School Varsity is in second place in the Conference basketball race with seven victories and one defeat.

We are proud of our team and the sportsmanlike conduct of our players and their coaches. We are also proud of the display of sportsmanship which has been maintained by our fans. The decisions of the officials have been respected. Good play on the part of the visiting players has also been applauded. For this help and encouragement, the school extends its sincere thanks.

Efforts of this kind are bound to produce results. Our congratulations to Superintendent Cotanche and his staff.

—From The Illinois Interscholastic.

THE LAW OF TEAMWORK

The Good American Works in Friendly Cooperation with Fellow-Workers

One alone could not build a city or a great railroad. One alone would find it hard to build a bridge. That I may have bread, people have made plows and threshers, have built mills and mined coal, made stoves and kept stores. As we learn better how to work together, the welfare of our country is advanced.

In whatever work I do with others, I will do my part and encourage others to do their part, promptly, quickly.

I will help to keep in order the things which we use in our work. When things are out of place, they are often in the way, and sometimes they are hard to find.

In all my work with others, I will be cheerful. Cheerlessness depresses all the workers and injures all the work.

When I have received money for my work, I will be neither a miser nor a spendthrift. I will save or spend as one of the friendly workers of America.

—The Code of the Good American, Personal Growth Leaflet No. 62.

Don't brood. You're a man, not a hen.

1941 Track and Field Rules

By E. A. THOMAS, Kansas State Secretary

Not many important changes will be found in the 1941 track and field rules. No major operations were performed by the 1940 rules committee. However, at the clinic conducted by coaches and members of the committee, a number of significant observations were made. These bear upon the efforts of the track and field sports supporters to make track maintain its popularity.

Considerable time was devoted to a discussion of the low hurdle race, as it applies to both the college and to the high school programs. Assuming that the present 220 yards low hurdle race, with 20 yards between hurdles and a barrier 30 inches high, is proper for college hurdlers, then it is not out of line to assume that the race might be too long and the distance between hurdles too great for high school boys. The clinic discussion, however, brought out the fact that many leading college and university track coaches do not consider the present low hurdle race as a real hurdle race at all. They point to the fact that good sprinters win the low hurdle race, whether or not they are good hurdlers, and thus the sprinter is simply furnished another event. Jessie Owen is the holder of the world's low hurdle record but nobody ever credited him with having good hurdling form. The 30-inch barrier does not require hurdling form or technique for good college sprinters.

In the light of these observations, it is not altogether proper to assume that the 200-yards low hurdle race for high schools, with 18 yards between hurdles, has solved the high school low hurdle problem. If, as some have insisted, it is true that average high school hurdlers can take the 20 yards between hurdles satisfactorily, provided the number of hurdles is decreased and the length of the race is shortened, then there should be some way to ascertain whether or not this claim is true. The graduate school of Iowa State University has attempted such a study but no data is yet available. It would be inadvisable for the high schools to make another change in the low hurdle race until they have positive evidence that they know what should be done.

The 39-inch high hurdle has become almost universally popular among high schools throughout the country and the change from the 42-inch barrier is endorsed by college and university coaches. Hurdling in high school is a much more popular event than ever before.

Those interested in the field events are concerned because of the lack of general interest in the discus and javelin throw. The new high school discus is much easier for high school boys to handle and, although they can throw it much further, it is so much more easily controlled that danger has been greatly reduced. The danger in the javelin throw lies in the fact that schools can not, or will not, provide the necessary safeguards for spectators and athletes. The

only problem in either event, as far as safety is concerned, is one of supervision, direction, and management. Another problem that exists, however, is one concerning what can be done for the boys who can not win points as runners or jumpers. In many states there is no event for the strong, heavy boy except the shot put. Boys of this type deserve a little more consideration than is being given them.

The sale of the Collegiate Interscholastic track and field guides, which contain the official high school rules, was much higher last year than for several years. This is attributed to the additions made in the high school section. There is a great deal of interest in the National Honor Roll and the results of the state high school meets printed in the guide. The new 1941 guides will contain some important clarifications and interpretations. They may be secured from sporting goods dealers.

Coaching School University of Kentucky

Lexington, Ky.

AUGUST 11-16

THE STAFF:

FOOTBALL

MR. FRANK LEAHY, head football coach
University of Notre Dame, previously head
football coach Boston College.

MR. AB KIRWAN, head football coach Uni-
versity of Kentucky.

MR. BERNIE SHIVELY, athletic director and
line coach, University of Kentucky.

BASKETBALL

MR. ADOLPH RUPP, University of Ken-
tucky.

* * * * *

The Kentucky High School Athletic Association is cooperating with the University in putting on this Big Summer Coaching School and Clinic. Special Tuition Rates will be given all coaches in member schools of the K. H. S. A. A.

Details and costs of the school will be announced in a later issue of The Athlete.

THE NATIONAL FRONT

REGIONAL CONFERENCE AT SPOKANE—A National Federation Regional Conference will be held at Spokane on Friday, April 11th, in connection with the Inland Empire Teachers Convention. Further details relative to this meeting will be included in the April issue. All board of control members are urged to attend.

MEETING OF NATIONAL BASKETBALL COMMITTEE—The National Basketball Committee will meet in Kansas City, Missouri, on March 30th and 31st. The rules for 1941-2 will be made up at that time. The meeting of the committee will be preceded by a meeting of representatives of the state high basketball committees. This meeting will be held on Saturday afternoon, March 29th, at the Hotel Continental. This group will discuss the recommendations of the various state high school groups of coaches, officials and administrators and they will appoint representatives to carry final recommendations to the National Committee the next day. Last year there was a similar meeting and the recommendations were considered very carefully by the National Committee. Any state committee sanctioned by the state high school association is eligible to send one or more representatives to this preliminary meeting or may send written recommendations. These should be sent to the national office.

PROPOSED LEGISLATIVE ACTION ON STATE ASSOCIATION WORK—There seems to be an epidemic of legislative bills related to the work of the state high school associations. Such bills are now pending in Illinois, Indiana and Oklahoma. There have always been attempts to add a political flavor to the state association work. To date, most states have been wise enough to keep the high school athletic activities under direct control of the high schools themselves and the administration of the activities has remained in the hands of the educators who have been specially trained for the work. Party politics has been foreign to these activities. The welfare of the schools demands that this policy be maintained. If legislators can be kept thoroughly acquainted with the valuable work which has been done by the schoolmen who have developed the state associations, there is little chance of action designed to sabotage the present machinery and pave the way for several new political appointees. The great necessity at the present time is to get this information in the hands of the men whose votes decide the issue.

GYMNASIUM CONSTRUCTION—The January issue of Scholastic Coach is devoted to gymnasium construction and equipment. This issue should be in every school library.

HOUSE BILL 10606 ALIAS 1074—The bill which would appropriate Federal funds for physical educa-

tion and athletics has been introduced in the new session as House Bill 1074. A few changes have been made in it but the fundamentals are the same.

IDAHO—The Idaho State Association has ruled that all-star teams will not be selected at the state sponsored basketball tournaments.

An informal ballot is being taken among the schools to determine the sentiment of administrators in connection with literary meets and tournaments which involve two or more states.

FOOTBALL AND BASKETBALL CONSTRUCTION—During the current school year many states have assisted in experimental work designed to aid in the perfection of a molded type football. As a result of this work, early defects have been reduced to a minimum and several molded type balls are now being given the finishing touches so that they may be approved as balls which are both durable and satisfactory in handling qualities. At the last meeting of the National Interscholastic Football Committee, provision was made in the rules for the use of such balls. In order to avoid the difficulties which are certain to arise, if schools attempt indiscriminate use of any type ball which is offered, a thorough testing program has been inaugurated so that schools will be protected against cheap inferior products which might tend to throw any type molded football in disrepute. The approved balls will bear the approval stamp of the National Federation. That stamp is the guarantee that thorough tests have proved such ball to have a satisfactory reaction and a high degree of durability.

There are important developments in connection with the basketball testing program and an announcement representing great benefits for school athletic departments will soon be ready.

YOUR JOB

Wherever you're working—in office or shop,
And however far you may be from the top—
And though you may think you're just treading the mill,
Don't ever belittle the job that you fill;
For, however little your job may appear,
You're just as important as some little gear
That meshes with others in some big machine,
That helps keep it going—though never is seen.
They could do without you—we'll have to admit—
But business keeps on, when the big fellows quit!
And always remember, my lad, if you can,
The job's more important—(oh yes)—than the man!
So if it's your hope to stay off the shelf,
Think more of your job than you do of yourself.
Your job is important—don't think it is not—
So try hard to give it the best that you've got!
And don't think ever you're of little account—
Remember, you're part of the total amount.
If they didn't need you, you wouldn't be there—
So, always, my lad, keep your chin in the air.
A digger of ditches, mechanic, or clerk—
THINK WELL OF YOUR COMPANY,
YOURSELF, AND YOUR WORK!

—Author Unknown.

IN MEMORIAM

Principal P. A. JONES, Sharon, Pennsylvania, passed away on February 10th. He was a member of the board of control of the Pennsylvania Interscholastic Athletic Association and of the Executive Committee of the National Federation. His energetic efforts in promoting interest in the various physical education and athletic activities led men in these fields to look to him for leadership. It was a privilege to work with him. It is a responsibility to carry on policies which he helped formulate.

It seems natural to attribute failure to bad luck and success to good judgment.

Tournament Teamwork

(SEE PLATE ON FRONT COVER)

In all this March enthusiasm for machine-like precision in the art of getting a basketball into a basket, one phenomenon may be overlooked. Teamwork by five talented ball handlers is one thing. Teamwork on a state-wide scale by thousands of cooperating school administrators, coaches, officials, sports writers and students is a modern miracle. Such teamwork is a prerequisite to a successful series of tournaments. It represents cooperation and coordination on a grand scale. State association executives and local managers pool their efforts for the benefit of all the schools and participants show a desire to make the tournaments a means of engendering good will, neighborliness and love of clean competition.

The climax of the basketball season is the state championship game. It is a thrilling event, due partly to the near perfect skills which players demonstrate, but in greater measure to interest which originates in the earlier elimination tournaments and which grows by accretion as the attention of sports lovers is drawn to a focal point in the athletic highlight of the school year. Its success is dependent on the teamwork of the thousands who aid in conducting the series and on the pleasant episodes and experiences connected with it.

Each individual will see in the tournaments many of the things for which he is looking. If he enters with a chip on a shoulder, he will find opportunity to criticize and quibble. But if he enters with a realization that a game is not a life and death matter but is played for the fun that may be derived from competition and for the friendly associations which may result, he will see the tournaments as fine entertainment and as a contribution to the welfare of those who play and those who watch.

In days of national stress, much is said about the courage, strength, and loyalties of those who may be called upon to sacrifice or serve. Broadened physical programs are being advocated. Zeitgeist and the tournament

series are brothers. Yesterday the state basketball championship may have been questioned; tomorrow a better substitute may be found; but today those who love this annual festival are in the saddle.

These attributes are listed on the credit side of the tournament series cause. It is a definite goal which is an incentive for players to maintain proper training habits and to strive for progressive development through the season. It is a test on the success each school has had during the season in training players and team followers in the ethics of competition. It furnishes the means whereby emotional stability may be cultivated during periods of stress; it provides a high type of entertainment which is able to compete with less desirable forms; it welds the school and the community into a unit because of common interest in the development and activities of a unit of the school; it is an example of good organization and teamwork on a state-wide scale; it is good clean, wholesome competition at its best; it provides a necessary income to maintain an essential statewide organization for properly controlling all interschool athletics and funds for individual schools for maintaining a sports program; it makes the physical training program of the school attractive enough to hold the interest of students and patrons and thus prevents a shifting of this interest to similar events which would be promoted by outside organizations if the schools should discontinue such a series; the final tournaments are clinics or schools where players demonstrate good sportsmanship, physical skills and game strategy which are an inspiration to observing players and coaches.

To the boys whose skill places them at the top of the championship hill, we respectfully take off our hat. To the teamwork which makes a successful series of such school events possible, we figuratively touch our forehead to the ground.

NATIONAL BASKETBALL COMMITTEE OF THE UNITED STATES AND CANADA

1941 Annual Questionnaire

This questionnaire is sent annually to representative basketball men in order that their views may be presented at the annual meeting of the National Committee. The Committee will be grateful if you will check these answers and RETURN THE QUESTIONNAIRE PROMPTLY to THEO. A. SANDFORD, Secretary, Carrollton, Ky. He will send all replies received up to March 16th to the Secretary of the Committee, 7 South Dearborn Street, Chicago, Illinois.

PART I. About Changes Made Last Spring:

Have rules listed here proved to be satisfactory?

- 1. Substitution may be made after a successful free throw. Yes..... No.....
2. When ball out of bounds, through touching player who is on or outside a boundary, it goes to an opponent. Yes..... No.....
3. When a player who has been awarded a free throw is disqualified, his substitute must attempt the throw. Yes..... No.....
4. The new fan-shaped backboard is legal where the home management chooses to install it. Yes..... No.....
5. The first extra period in a game played in quarters is always 3 minutes. Yes..... No.....
6. The official must actually have possession before handing ball to player out of bounds from front court. Yes..... No.....
7. Ball goes into play when placed at disposal of free thrower. Yes..... No.....

from coming to rest and to scatter certain rebounds over a wider area: Do you prefer this type? Yes..... No.....
(e) Studied action time and distance traveled during game, record data here: Average distance traveled by one player per (32) (40) minute game:miles. Average time player was in motion faster than a walk:minutes. Avg. time for one of these runs:seconds.

PART II. Experimentation and Data:

- 8. Please express opinion:
(a) Tempo of game is: too fast..... too slow..... about right.....
(b) Scoring is: too high..... too low..... about right.....
(c) To promote health: provide more rest periods Satisfactory as now played.....
(d) Is the present game as interesting and scientific as it was with the center jump? Yes..... No..... Are criticisms valid enough to warrant consideration of reinstatement of center jump with restrictions such as having jumpers rotate? Yes..... No.....
9. Check below only if you have:
(a) Measured light intensity on any court: Was average foot-candle power at four feet above floor below 10?....., above 10?.....
(b) Coached, played, officiated or managed games on courts with new type backboards: Prefer new type..... Prefer old type..... Equally satisfactory.....
(c) Used the written name slip method of substituting: Do you prefer this method? Yes..... No.....
(d) Used a basket with a convex flange between the ring and the backboard to prevent ball

PART III. Concerning Rules for 1941-2:

- 10. Permit substitution any time the ball is dead, including after a field goal. Yes..... No.....
11. (Check one). After a goal:
(a) Require Official to hold ball a specified number of seconds. Yes.....
(b) Award ball to opponent out of bounds at mid-court. Yes.....
(c) Retain present rule. Yes.....
12. If 11a or 11b should be adopted, stop clock after each goal. Yes..... No.....
13. Require Official to go to Scorer's bench on Scorer's signal and complete all substitutions there. Yes..... No.....
14. If connected with College or Independent games check only (a). Otherwise check (b).
(a) In games played in 20 minute halves prescribe a 2-minute intermission the first time ball is dead after 10 minutes. Yes..... No.....
(b) In High School games prescribe the mid-period intermission for all quarters and regardless of whether a charged time-out has occurred in the first four minutes. Yes..... No.....
15. (a) Allow 5 personal fouls before disqualification. Yes..... No.....
(b) If (a) is not adopted, allow one additional personal foul for each extra period. Yes..... No.....
16. Mark basket supports with 2-inch line above end line and consider the part above the court as being inbounds. Yes..... No.....
17. Standardize basket-backboard attachment mechanism so that any official basket will fit any official backboard. Yes..... No.....

QUESTIONNAIRE COMMITTEE

Forrest Cox - J. Mark Good - A. H. Jefferess
F. P. Maguire - Oswald Tower - H. V. Porter, Chr.

Signed:(Coach.....) (Official.....) (Administrator.....) (Other.....).

Institution Represented: College..... High School.....Y. M. C. A..... Other.....

City..... State.....

These Teams to Play in 16 Regionals

The following teams (123), winners and runners-up of the 64 Districts, will meet in Regional Play to determine the 16 State Representatives:

FIRST REGION — At Murray

- 1—Central (Clinton) and Bardwell
- 2—Paducah and Heath.
- 3—Lowes and Cuba.
- 4—Sedalia and Almo.

SECOND REGION — at Madisonville

- 5—Hardin and Calvert City.
- 6—Marion and Fredonia.
- 7—Hanson and Earlington.
- 8—Sinking Ford and Hopkinsville.

THIRD REGION — At Owensboro

- 9—Dixon and Providence.
- 10—Henderson and Corydon.
- 11—Calhoun and Beech Grove.
- 12—Hardinsburg and Hawesville.

FOURTH REGION — At Leitchfield

- 13—Hartford and Fordsville.
- 14—Graham and Hughes-Kirkpatrick.
- 15—Brownsville and Sunfish.
- 16—Caneyville and Yeaman.

FIFTH REGION — At Glasgow

- 17—Bowling Green and Woodburn.
- 18—Lewisburg and Russellville.
- 19—Glasgow and Cave City.
- 20—Gamaliel and Tompkinsville.

SIXTH REGION — At Elizabethtown

- 21—Horse Cave and Greensburg.
- 22—Rineyville and Howe Valley.
- 23—Lebanon Junction and Shepherdsville.
- 24—Willisburg and Campbellsville

SEVENTH REGION — At Louisville

Louisville Male, St. Xavier and Manual.

EIGHTH REGION — At Shelbyville

- 29—Valley and Jeffersontown.
- 30—Cropper and Bagdad.
- 31—Bedford and LaGrange.
- 32—Dry Ridge and Williamstown.

NINTH REGION — At Simon Kenton

- 33—Walton and Hamilton.
- 34—Erlanger and Ludlow.
- 35—Dayton and Bellevue.
- 36—Newport and Covington.

TENTH REGION — At Paris

- 37—Berry and Renaker.
- 38—Morgan and Mt. Olivet.
- 39—Maysville and Minerva.
- 40—Paris and Carlisle.

ELEVENTH REGION — At Lexington

- 41—Midway and Sadieville.
- 42—Kavanaugh and Burgin.
- 43—Lexington and University.
- 44—Central and Madison.

TWELFTH REGION — At Somerset

- 45—Danville and Buena Vista.
- 46—Highland and Brodhead.
- 47—Somerset and Stearns.
- 48—East Bernstadt and Lily.

THIRTEENTH REGION — At Corbin.

- 49—Manchester and Oneida.
- 50—Corbin and Williamsburg.
- 51—Middlesboro and Benham.
- 52—Black Star and Lone Jack.

FOURTEENTH REGION — At Vicco

- 53—Whitesburg and South Robinson.
- 54—Hazard and First Creek.
- 55—Hindman and Carr Creek.
- 56—Beattyville and Alvan Drew.

FIFTEENTH REGION — At Prestonburg

- 57—Belfry and Cumberland.
- 58—Prestonburg and Garrett.
- 59—Meade Memorial and Inez.
- 60—Frenchburg and Cannel City.

SIXTEENTH REGION — At Morehead.

- 61—Winchester and Sharpsburg.
- 62—Grayson and Morehead.
- 63—Greenup and McKell.
- 64—Ashland and Catlettsburg.



BOX SCORES OF SEMI-FINALS AND CHAMPIONSHIP IN THE S. I. A. A. TOURNAMENT

Bowling Green, Ky. - March 6, 7, 8, 1941

Murray (52)			S.W. La. (33)								
fg	ft	pf	fg	ft	pf						
Culp f	3	0	0	LaBauve f	3	0	4				
Steffin f	2	6	1	Reed f	3	1	3				
Salmons c	8	3	1	Hurst c	6	1	2				
Haines g	0	0	1	Young g	2	0	1				
McKell g	3	3	3	Breen g	1	1	2				
Grimmer g	2	2	1	Manchey c	0	0	0				
Vincent g	0	0	1								
Kirkpatrick f	0	0	0								
Little g	1	0	0								
Totals			19	14	8	Totals			15	3	12

Score at Half—Murray 29, Southwestern La. 18.

Free throws missed — Salmons, Haines, McKell, Grimmer, LaBauve (3), Reed, Hurst (4).

Officials — Bowser Chest, Nashville, Tenn.; Chin Johnson, Old Hickory, Tenn.

Western (67)			La. Norm.(46)								
fg	ft	pf	fg	ft	pf						
Shelton f	1	1	0	Cummings f	4	2	1				
Fulks f	4	0	0	Thomas f	1	1	2				
Towery c	2	0	2	Briley c	8	2	2				
H. Downing g	4	2	2	Boswell g	0	2	1				
A. Downing g	1	0	0	Starnes g	2	3	3				
McGuffey f	4	3	4	Botzong f	1	2	1				
Day f	5	1	3	McElroy g	1	0	2				
D. Downing g	1	1	4								
Sydnor g	7	1	2								
Totals			29	9	17	Totals			17	12	12

Score at Half—Western Kentucky 30, Louisiana Normal 15.

Free throws missed—Towery 2, H. Downing, McGuffey, Cummins 3, Briley 4, Starnes 5, Botzong.

Officials—Johnson and Chest.

Murray (41)			Western (45)								
fg	ft	pf	fg	ft	pf						
Culp f	4	1	0	Shelton f	5	0	2				
Steffin f	3	1	0	Fulks f	4	0	0				
Salmons c	1	1	2	Towery c	4	1	2				
McKeel g	6	1	1	H. Downing g	2	1	3				
Haines g	0	2	0	A. Downing g	0	0	0				
Grimmer f	2	3	2	Sydnor g	6	1	2				
Totals			16	9	5	Totals			21	3	9

Box Scores of Semi-Final and Championship Games in the K. I. A. C. TOURNAMENT

Held at Richmond, Ky., February 27, 28 and March 1, 1941

SEMI-FINALS

Union (53)	fg	ft	pf	Wesleyan (32)	fg	ft	pf
Samples f	2	2	3	Callahan f	3	1	4
Howard f	1	1	3	Johns f	1	3	4
Leroy f	2	3	2	Stacy c	0	3	2
Cartmill c	2	8	4	M. Martin g	2	2	4
Pope c	0	0	1	Deatherage g	3	0	2
McFadden g	6	0	4	King g	0	0	0
Laswell g	1	2	3	Norton g	0	0	0
Mullins g	3	1	1	Puckett g	1	2	4
Lawson g	0	2	1	Whitlock g	0	2	2
				H. Martin g	0	1	3
Totals	17	19	22	Totals	10	12	25

Score at Half—Union 25, Wesleyan 19.
Officials—Mills and Koster.

Murray (41)	fg	ft	pf	Western (32)	fg	ft	pf
Steffin f	1	9	1	Fulks f	2	0	4
Culp f	0	1	1	Shelton f	3	0	3
Grimmer f	5	1	2	Day f	2	3	2
Little f	0	0	0	McGuffey f	0	0	0
Salmons c	2	1	2	Towery c	3	0	4
Kirkpat'k c	0	0	0	H. Downing g	0	0	4
Haines g	0	2	4	A. Downing g	0	1	1
McKeel g	4	3	1	D. Downing g	0	0	0
Vincent g	0	0	0	Sydnor g	3	2	4
Gish g	0	0	1	Woodard g	0	0	0
Totals	12	17	12	Totals	13	6	22

Score at Half—Murray 20, Western 9.

CHAMPIONSHIP

Murray (62)	fg	ft	pf	Union (42)	fg	ft	pf
Steffin f	5	2	2	Samples f	5	2	2
Haines f	1	1	3	LeRoy f	2	1	1
Vincent f	0	0	0	Howard f	0	2	2
Little f	1	1	0	Cartmill c	0	1	2
Salmons c	6	2	3	Pope c	0	1	0
Grimmer c	2	1	2	McFadden g	1	0	3
Culp g	3	4	3	Laswell g	3	4	3
McKeel g	6	0	1	Mullins g	3	1	3
Gish g	0	1	1	Lawson g	0	2	1
Kirkpatrick g	1	0	3				
Totals	25	12	18	Totals	14	14	17

Score at Half—Murray 23, Union 21.
Officials—Koster and Mills.

ALL TOURNEY

The following all-tournament team was chosen by writers and coaches at the tournament's close:

McKeel, guard; Steffin, forward; and Salmons, center, of Murray.

Samples, forward, of Union.

Duncan, center, of Morehead.

Andrews, forward, of Louisville.

M. Martin, guard, of Western.

Green, center, of Berea.

BOX SCORES of SOUTHEASTERN TOURNAMENT

Held at Louisville, Ky., February 27, 28 and March 1, 1941

Tennessee(36)	fg	ft	pf	Kentucky (33)	fg	ft	pf
Mehen f	3	0	1	Farnsley f	1	1	1
Clark f	2	0	1	Allen f	3	0	2
Thomas c	3	4	2	Ramsey f	0	2	1
O'Neil c	1	0	1	King c	0	0	2
Huffman g	2	3	1	Brewer c	0	2	3
Herman g	0	0	1	Staker g	2	0	3
Balitsaris g	2	3	2	Akers g	1	0	0
				Huber g	6	0	0
				White g	1	0	0
Totals	13	10	9	Totals	14	5	12

Score at Half—Tennessee 19, Kentucky 7.
Officials—Jackson and Chest.

Kentucky (39)	fg	ft	pf	Alabama (37)	fg	ft	pf
Farnsley f	2	4	3	Brantner f	1	1	3
Allen f	0	0	2	Thomas f	1	1	2
Ramsey f	0	0	2	Storey f	2	0	2
White f	1	0	3	Leeth c	0	2	1
King c	3	1	2	Adair g	6	3	1
Akers g	4	1	3	Roth g	3	4	2
England g	0	0	1				
Staker g	0	0	1				
Huber g	5	3	0				
Totals	15	9	17	Totals	13	11	11

Score at Half—Kentucky 16, Alabama 16.
Officials—Chest and Walters.

Florida (26)	fg	ft	pf	Tennessee(47)	fg	ft	pf
Walton f	5	0	3	Mehen f	1	1	1
Yinshanis f	0	2	0	O'Neil f	0	1	2
Zdanzukas f	2	1	1	Clark f	5	0	1
Ellish c	1	1	3	Powers f	0	0	1
Reen g	0	0	3	Allen f	0	0	0
Harrison g	0	0	0	Thomas c	4	3	1
Thompson g	2	2	2	Huffman g	4	1	3
				Herman g	2	1	1
				Balitsaris g	3	1	1
				Luttrell g	0	1	1
Totals	10	6	12	Totals	19	9	12

Score at Half—Tennessee 29, Florida 9.
Officials—Jackson and Walters.

ALL TOURNEY

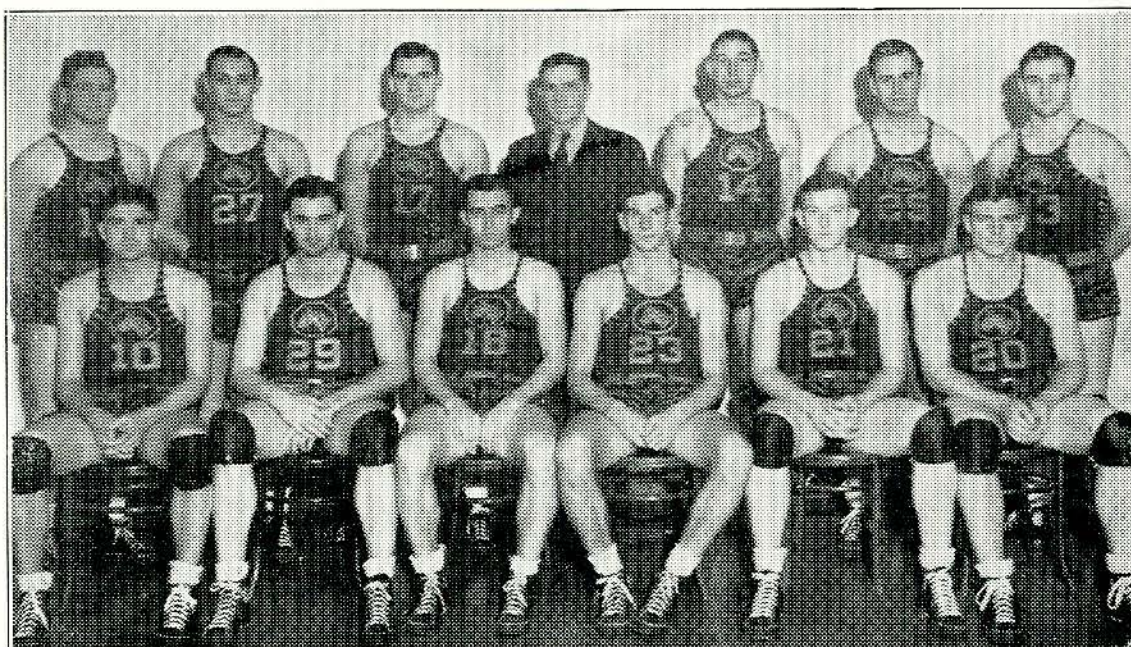
The official all-tournament team picked by sports writers and officials follows:

Forwards—Pinkie Lipscomb, Vanderbilt; Bernie Mehen, Tennessee; Louis Adair, Alabama.

Centers—Frank Thomas, Tennessee; and Jim King, Kentucky.

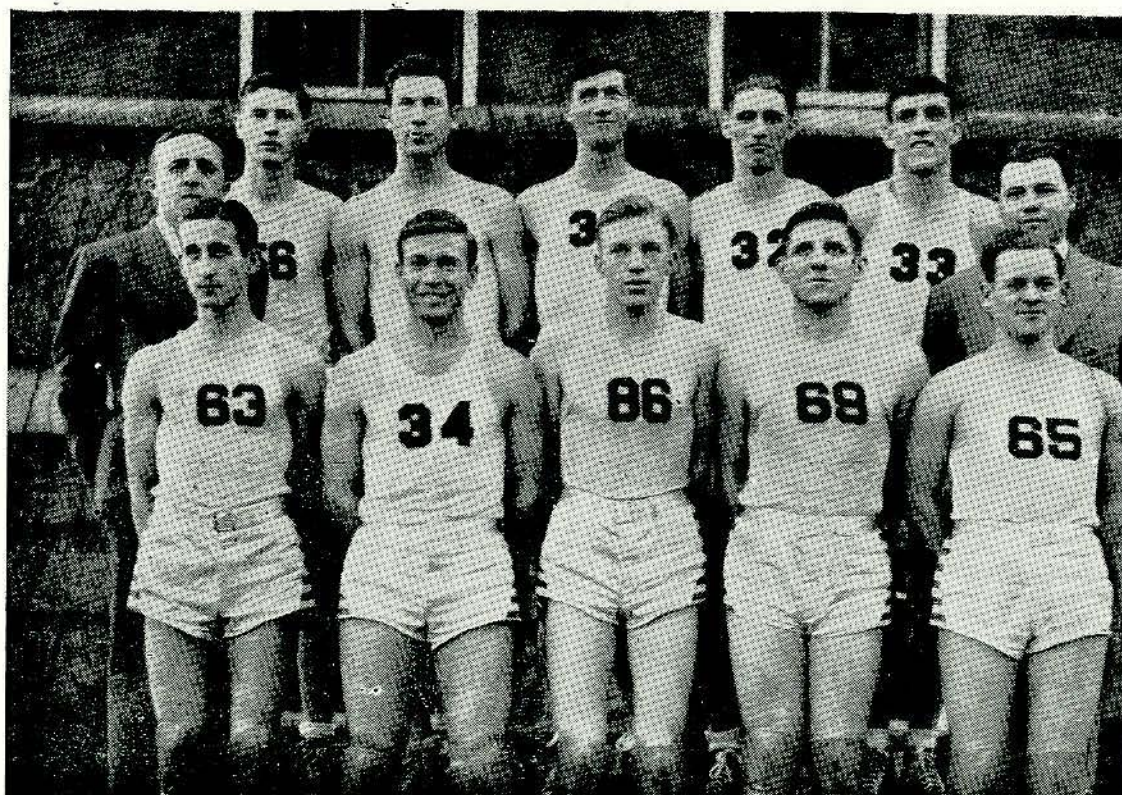
Guards—Lee Huber, Kentucky; Gilbert Huffman, Tennessee; Marvin Akers, Kentucky.

MURRAY "THOROBREDS" — K. I. A. C. CHAMPIONS, 1941



—Courtesy Richmond Daily Register.

UNION COLLEGE — K. I. A. C. Runner-up, 1941



—Courtesy Richmond Daily Register.

SUTCLIFFE HONOR SWEATERS

SHAKER KNIT and BABY SHAKERS



- No. 6502—Heavy weight shaker knit coat sweater.
Price 8.25
- No. 702—Heavy weight baby shaker coat Price 5.65

Jersey Weave Jackets



- No. 40R—Extra heavy weight jersey weave coat jacket—one which is "tops" in popularity today as an honor garment Price 4.95

SHAKER KNIT and BABY SHAKERS



- No. 6503—Heavy weight shaker sweater. May be had in either V-neck or crew neck.
Price 6.90
- No. 703—Heavy weight baby shaker sweater in either V-neck or crew neck . . . 4.20

CHENILLE LETTERS 6-inch size 55c - 7-inch size 70c - 8-inch size 85c
SERVICE STRIPES Any number in Sleeves, Extra per Sweater 25c - In Letters, 5c per Stripe

MINIATURE CHARM BALLS



The illustrations are actual size. They are gold filled and will last many years—Nothing better unless you buy the extremely high solid gold balls.



Large Size . . Each 85c Small Size . . Each 75c

SOFTBALL - BASEBALL - GOLF TRACK - TENNIS

Our New Spring Catalogues were mailed on February 14th. If you did not get a copy let us know. . . . Softball in particular makes a fine spring sport for schools.

Monne Farrell and Butch Sosnin

our Kentucky School Representatives, will have a complete athletic goods display in Rooms 361-362 at Phoenix Hotel in Lexington during the State Basketball Tournament. They extend to you now a special invitation to make their rooms your headquarters.

THE SUTCLIFFE CO.

Incorporated

LOUISVILLE, KENTUCKY