

8-1-1948

The Kentucky High School Athlete, August 1948

Kentucky High School Athletic Association

Follow this and additional works at: <http://encompass.eku.edu/athlete>

Recommended Citation

Kentucky High School Athletic Association, "The Kentucky High School Athlete, August 1948" (1948). *The Athlete*. Book 496.
<http://encompass.eku.edu/athlete/496>

This Article is brought to you for free and open access by the Kentucky High School Athletic Association at Encompass. It has been accepted for inclusion in The Athlete by an authorized administrator of Encompass. For more information, please contact Linda.Sizemore@eku.edu.

THE KENTUCKY



High School Athlete

MALE HIGH SCHOOL TRACK TEAM

K. H. S. A. A. CHAMPION — 1948

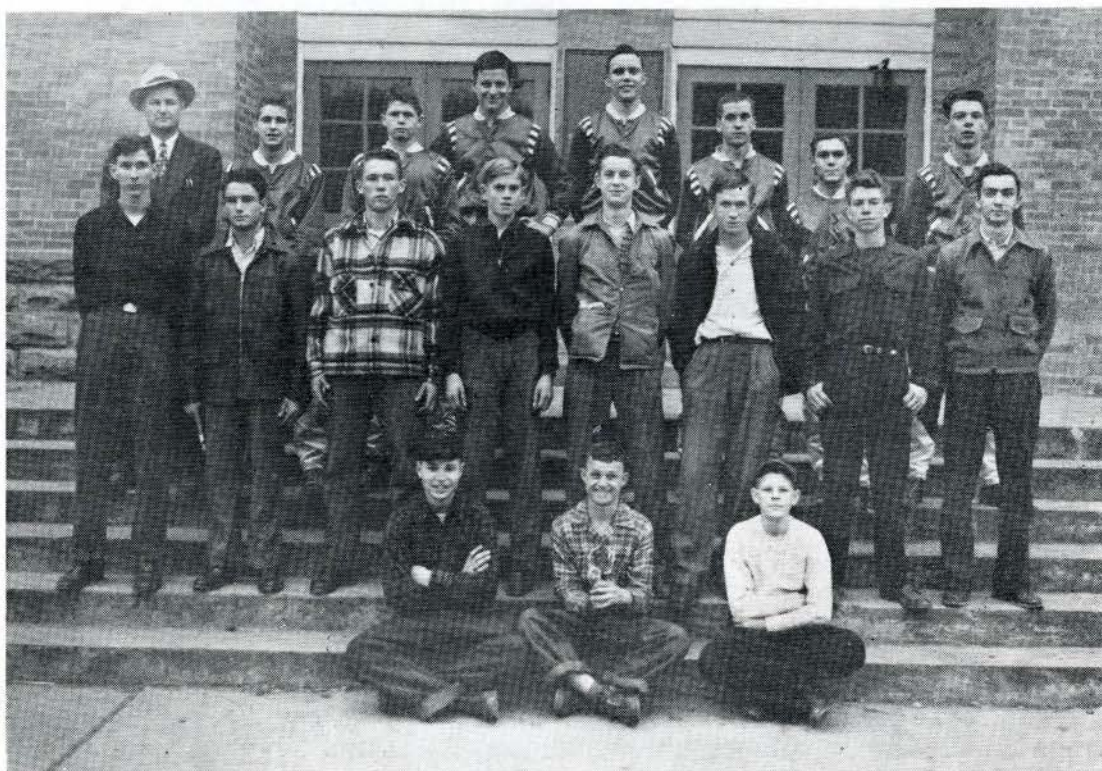


(Left to Right) Front Row: Bill Fowler, Joe Hillman, Deroy Scott, Jere Smith, Captain Ed Hamilton, Douglas Adamson, Robert Thorne, Ken Wyrick, Don Merchant. Middle Row: Coach N. G. Denes, Bob Koehler, Hall LeGrand, Monie Beard, Andy Divine, Bob Lawrence, Henry Sossin, Joe Morrison, Don Williamson, Assistant Coach Romig K. Krause. Top Row: August Bowden, Bob Hook, Herbert Ginger, Joe Harmon, David Nightingale, Bob Saur, Billy Donley, Paul Grider, Bill Caufield, Buddy Washburn.

Official Organ of the KENTUCKY HIGH SCHOOL ATHLETIC ASSN.

AUGUST - 1948

PRESTONSBURG HIGH SCHOOL BASEBALL TEAM
K. H. S. A. A. CHAMPION — 1948



(Left to Right) Front Row: Managers Hopson, Chaffins, Lafferty, Second Row: Williamson, Lafferty, Spradlin, Childers, Allen, Childers, Burkett, Garber. Third Row: Coach Eibner, Mayo, Goble, Harmon, Burchelt, Branham, Willis, Porter.

Kentucky High School Baseball Tournament

Parkway Field, Louisville, Kentucky

June 9-10, 1948

Central City (8)

Lee County (4)

Prestonsburg (13)

Fort Knox (9)

Heath (1)

Manual (20)

Newport Catholic (7)

Irvine (3)

Central City (7)

Prestonsburg (10)

Manual (1)

Newport Cath. (2)

Prestonsburg (12)

Newport Cath. (3)

Prestonsburg-Champion

The Kentucky High School Athlete

*Official Organ of the
Kentucky High School Athletic Association*

Vol. XI—No. 1

AUGUST, 1948

\$1.00 Per Year

Report On the Summer Meeting of the National Federation

By T. K. Stone
Vice-President, K. H. S. A. A.

The regular summer meeting of the National High School Athletic Federation was held at Pequot Lakes, Minnesota, on June 28, 29 & 30. It was a genuine pleasure for me to serve as your representative to this meeting and to bring back a few observations gleaned during "bull sessions" with fellows from all over the country. Commissioners, executive secretaries, secretaries, Board of Control members, and their wives were there from some twenty-five member states.

It was most interesting to note that the trend towards a full-time man was still in evidence, Alabama having made the change just last year. It was also observed that in most of the progressive states where additional and better services are being provided that it has become imperative that an assistant commissioner be employed to help develop a more complete program. These facts would seem to substantiate Kentucky's policy of moving to the full-time Commissioner plan.

A half-day's discussion was given to the question of the failure of representatives of the National Federation and the N. C. A. A. to agree on a joint football code for 1948. H. V. Porter, National Federation Executive Secretary, traced the development of attempts of a joint-committee to iron out differences between the college and high schools. Sufficient progress had been made in the New York meeting of this Committee which resulted in wide-spread publicity being given to an announcement that the colleges and high schools would have a joint code and play under the same set of football rules in 1948.

As a result of this announcement and subsequent developments, the new rule book and play situations book containing compromises tentatively agreed on, was put into the hands of the printer by Mr. Porter, Federation Secretary. When last minute failure of the N. C. A. A. group to give

final approval to the changes developed, it was too late to stop the printing, and as a result the football rules used by member schools of the Federation this fall will be different from those used last year to the extent of certain compromises or concessions made by the Federation in an effort to secure a joint code. The Federation members went on record, however, as unanimously agreeing to use the new code as printed and to continue efforts toward the adoption of a joint code by both the colleges and high schools. It is sincerely hoped that this understanding may be arrived at by 1949.

On Monday evening the new football and basketball films were shown by Mr. A. A. Schabinger. It was the consensus of the group that these were the best films yet produced to interpret the rules of these sports. I earnestly recommend that every one of you secure these films and show them at an assembly meeting in your school and also make them available to service clubs in your community. The officials, who will conduct the football rules clinics early in September, plan to use them in their work.

There is a little commercialism in part of the films devoted to a brief extolling of the virtues of Wheaties—The Breakfast of Champions—but not enough to be objectionable. These films may be secured through the Department of University Extension at the University of Kentucky and will be well worth the showing.

It was interesting to compare Kentucky's plan of insurance for its athletes with plans used in other states. The other states have pretty much the same problems we have—namely, getting all the schools to get all their athletes insured, keeping the premium reasonably low, and making as complete a coverage with as liberal benefits as possible. Sometimes we school men think there's too much red tape involved, and that the protection isn't enough—but it was most

(Continued on page Nineteen)

AUGUST, 1948

VOL. XI—NO. 1

Published monthly, except June and July, by the Kentucky
High School Athletic Association.

Office of Publication, Henderson, Ky.

Entered as second-class matter in the post office at Henderson,
Kentucky under the act of March 3, 1879.

Editor.....THEO. A. SANFORD
Henderson, Ky.

BOARD OF CONTROL

President.....Lyman V. Ginger, Lexington
Vice-President.....Talton K. Stone, Carrollton
Directors—Sam B. Pollock, Madisonville; J. Matt Sparkman,
Paintsville; Roy G. Eversole, Hazard; James L. Cobb,
Newport; J. B. Mansfield, Cave City; Carlos Oakley, Morganfield.
Subscription Rates.....\$1.00 Per Year

From the Commissioner's Office

From The Commissioner's Office 1948-49 Membership Dues

Schools will soon receive statements for their 1948-49 membership dues. Principals will please indicate the names of coaches only in those sports which will be maintained during the coming school year. It will be appreciated if school executives will hold their checks for dues until the statements are received. These statements will not be mailed out until all supplies have been received in the State Office.

Registration of Officials

The previously registered football officials have already been sent their renewal application cards. New officials who wish to register with the Association should write to the Commissioner. The football rules and play situations books have been received from the printer, and the basketball publications will be available within the next few weeks. Basketball officials who wish to register again should hold their fees until they receive the usual form letter with the enclosed application card.

The Insurance Program

The Board of Control, in its July meeting, set the fees and benefits of the K. H. S. A. A. Protection Fund at the same figures as those of last year. The fees are \$1.50 per player in football, including spring practice, and 50¢ in each of the other sports.

Each year more school men are realizing the benefits of the Protection Fund and are insuring their players. A form letter was recently sent to all Kentucky city and county superintendents. The following statement appeared in the letter: "This year most of your high school boys and girls will be taking the newly required course in Health and Physical Education. Since many of the activities of your students in connection with



Roy G. Eversole
K. H. S. A. A. Director

Roy G. Eversole, Superintendent of the Hazard City Schools, has been elected to membership on the K. H. S. A. A. Board of Control for a four-year period, beginning July 1. No nominations having been received in the State Office for a director to fill the vacancy existing in section 7, the Board of Control named Mr. Eversole as the director to represent this area.

The new Board member received his A. B. and M. A. degrees from the University of Kentucky. He is president of the Upper Kentucky River Education Association for the present year and is president of the Hazard Lyons Club. He is a former coach and high school principal, and his training and experience will make him a valuable addition to the Board of Control.

—o—

this course will take place on the playgrounds and in the gymnasium, it is possible that you will wish to make available to students in Physical Education the benefits of the K. H. S. A. A. Protection Fund. For the small amount of 50¢, each of your students taking Physical Education can be protected for the entire school year. Claims may be submitted for any injury which occurs on the grounds or in the gymnasium during supervised play or Physical Education periods. This coverage does not include injuries sustained after school in the major and minor sports."

(Continued on Page Eighteen)

MALE HIGH SCHOOL GOLF TEAM K. H. S. A. A. CHAMPION — 1948



(Left to right) Jack Carpenter, Captain Brown Cullen, Bob Hagg, Bob Eubanks, Kelly Hutcherson.

Male Golfers Win Their

Fifth Straight State Title

For the fifth time in a row Male High School spread-eagled the field to win the K. H. S. A. A. State Tournament held at the Lexington Country Club on May 17-18. Male's score of 946 was 30 strokes better than Lafayette's, the runner-up, and four strokes lower than the 950 the Male team posted to win over the Officers Club course at Fort Knox last year. Shelbyville was third with 1,005 and the next six schools were bunched from 1,013 to 1,024.

A finish fight for individual honors was waged between Cullen of Male, Brewer of Lafayette, and Riddle of Madisonville. Cullen emerged the winner with a score of 227 to Brewer's 230 and Riddle's 231. After trailing Cullen for 26 holes, Brewer caught him on 27 but was unable to stand the pace set by the smoothly playing Cullen. An element of suspense was injected when Riddle had a chance to nose out Brewer for second place by taking birdies on the 53rd and 54th holes, but was only able to shoot two pars. Riddle's 72 on this final round was next to the lowest round ever turned in since the start of K. H. S. A. A. Tournament Play. Delk of Manual had an unbelievable 67 over Seneca back in the early '40's.

Players from 18 schools participated. Fifteen schools entered full teams. College High of Bowling Green entered three men, Russellville two, and Covington Catholic one.

Final team scores were: Male, 946; Lafayette, 976; Shelbyville, 1,005; Manual, 1,013; Henry Clay, 1,014; St. Henry, 1,016; Madisonville, 1,019; Anchorage, 1,021; Flaget, 1,070; Dixie Heights, 1,096; Middlesboro, 1,105; University High, 1,111.

Individual scores for the 54 holes were as follows: 227-Cullen, Male; 230-Brewer, Lafayette; 231-Riddle, Madisonville; 236-Eubanks, Male; 237-Carpenter, Male; Bacon, St. Xavier; 238-Kirchner, Manual; 239-McCormick, Winchester; 240-Sorrell, Henry Clay; 242-Oyler, Anchorage; 243-Burton, Male; 244-Buckner, Shelbyville; Foster, Lafayette; 246-Lawson, Shelbyville; Haag, Male; 247-Whipple, Anchorage; Logan, Shelbyville; Mann, Covington Catholic; 248-Verling, St. Henry; Brown, St. Xavier; 249-Jordan, Lafayette; 250-Phillips, Anchorage; Fussiner, St. Henry; Coleman, College High; Holton, Henry Clay; 252-Nolan, Manual; Cain, Manual; Ramler, St. Henry; 253-Moss, Lafayette; 254-Gorham, Lafayette; Rolfson, St. Henry; 255-Ecton, Winchester; 256-Baker, Middlesboro; Dammert, Dixie Heights; Simmons, Henry Clay; 258-Pol-

(Continued on Page Twenty)

REPORT OF AUDIT

Louisville, Ky., July 20, 1948.

Mr. Theodore A. Sanford, Secretary & Treasurer
Kentucky High School Athletic Association,
Henderson, Kentucky.

Dear Sir:

Pursuant to the instructions received, we have made an audit of the books and records of the KENTUCKY HIGH SCHOOL ATHLETIC ASSOCIATION for the period of one year beginning July 1, 1947 and ended June 30, 1948. In addition, we have prepared and attached hereto statements of the Receipts and Disbursements, which in our opinion reflects the true financial condition of the Association as of June 30, 1948.

The Cash Funds on Hand and U. S. Savings Bonds Accounts were found to be correct and verified by letter from your depositories.

We found the records presented us for purpose of audit to be in agreement and in good condition.

Respectfully submitted,

JOHNSON-FOWLER & CO.

By Huett Johnson

Certified Public Accountant.

KENTUCKY HIGH SCHOOL ATHLETIC ASSOCIATION

Period from July 1, 1947 to June 30, 1948

STATEMENT OF RECEIPTS AND DISBURSEMENTS

| | |
|--|-------------|
| Balance in Checking Account July 1, 1947 | \$ 2,489.63 |
| RECEIPTS | |
| Annual Dues 496 @ \$3.00 ... | \$ 1,488.00 |
| Officials' Dues 1439 @ \$2.00 (277 Football-1162 Basketball) | 2,878.00 |
| Overpayment of Dues (Schools and Officials) ... | 10.50 |
| Redeposits (Bad Checks Made Good) | 10.15 |
| Advertising in Magazine ... | 616.00 |
| Subscriptions to Magazine .. | 9.00 |
| Sale of Rules Books | 100.76 |
| Interest Received from Bonds | 762.50 |
| Transferred from Savings Account No. 1 | 4,000.00 |
| Transferred from Savings Account No. 2 | 2,000.00 |
| Transferred from State Basketball Tournament Account | 32,054.47 |
| Receipts 1948 State Baseball Tournament | 508.10 |
| Receipts from 1948 State Track Meet | 419.92— |
| | 44,857.40 |
| | 47,347.03 |

DISBURSEMENTS

| | |
|--|-------------|
| Board of Control Expense ... | \$ 2,193.54 |
| Postage | 530.55 |
| Insurance on Equipment ... | 3.84 |
| Purchase of National Federation Publications | 1,066.11 |
| Fidelity Bonds | 47.50 |
| Delegates to National Federation Meetings | 458.50 |
| Expense of Commissioner's Office | 87.00 |
| Commissioner's Salary | 6,045.50 |
| Telephone and Telegraph ... | 749.99 |
| Utilities | 28.49 |
| Clerical Help | 3,082.40 |
| Office Supplies | 139.00 |
| Additional Janitorial Services | 50.00 |
| Office Rent | 793.75 |

| | |
|------------------------------------|----------|
| Refund of Dues (Overpayment) | 10.50 |
| Official Emblems | 212.83 |
| Purchase of New Equipment .. | 1,093.79 |
| Printing | 1,107.90 |
| Magazine Costs: | |
| Press Service ...\$ | 100.00 |
| Printing and Engraving | 2,030.49 |
| Editor's Office Expense | 69.40 |
| Mailing | 30.00— |
| | 2,229.89 |

Clinics:

| | |
|---------------------------------|--------|
| Honorariums ...\$ | 575.00 |
| Printing & Miscellaneous Exp. . | 27.75— |
| | 602.75 |

| | |
|---|----------|
| Addressograph Plates | 40.18 |
| National Federation Dues... | 22.50 |
| Repairs on Equipment | 18.95 |
| Bad Checks | 10.15 |
| Service Charges—Bank | 28.35 |
| Withholding Tax | 1,312.20 |
| Audit | 35.00 |
| Investigations for Board of Control | 143.10 |
| Rental on Films | 215.60 |
| Girls' Division | 2.00 |

Swimming Meet:

| | |
|--------------------------------------|------------|
| Expenses—State Swimming Committee.\$ | 97.34 |
| Trophies and Medals | 196.93— |
| | 294.27 |
| Officials' Bureaus | 13.80 |
| Purchase of Bonds | 8,000.00 |
| Savings Account No. 1 | \$4,000.00 |
| Savings Account No. 2 | 2,000.00— |
| | 6,000.00 |

State Tennis Meet:

| | |
|--------------------------|-----------|
| Trophies and Balls | \$ 188.00 |
| Misc. Exp. | 32.00— |
| | 220.00 |

| | |
|------------------------------|--------|
| Meals—Annual Banquet\$ | 224.00 |
| Rental of Safety Deposit Box | 2.40 |

Track Expense:

| | |
|---------------------------------|-----------|
| Trophies and Awards | \$ 700.94 |
| Regional Track Expenses | 18.28 |
| Committee Exp. . | 96.00 |
| Officials | 151.30 |
| Mileage & Local Entertainment . | 1,628.21 |
| Misc. Expenses . | 261.86— |
| | 2,856.59 |

Golf:

| | |
|---------------------------------|--------|
| Golf Trophies—State Tour. ...\$ | 86.75 |
| Misc. Expenses State Tour. ... | 45.87— |
| | 132.62 |

Baseball Expense (District, Regional & State Meets):

| | |
|--|-----------|
| Trophies and Awards | \$ 148.26 |
| Refunds on District Tour. Exp. | 701.91 |
| Refunds on Regional Tour. Exp. | 276.36 |
| Transportation (State Meet) .. | 414.28 |
| Meals (State Meet) | 654.00 |
| Lodging (State Meet) | 443.31 |
| Ticket Sellers & Takers (State Meet) | 65.00 |

| | | | |
|----------------------------|--------|----------|-------------|
| Rental & Services | | | |
| Parkway Field | | | |
| (State Meet) .. | 249.60 | | |
| Scorer (State | | | |
| Meet) | 25.00 | | |
| Umpires (State | | | |
| Meet) | 120.00 | | |
| Tournament | | | |
| Manager's Exp.. | 39.50 | | |
| Baseballs and | | | |
| Tickets (State | | | |
| Meet) | 79.52 | | |
| Federal Tax | | | |
| (State Meet) .. | 81.28 | 3,298.02 | 43,403.56 |
| Cash Balance in Bank... | | | \$ 3,943.47 |
| BANK RECONCILEMENT | | | |
| Balance per Bank State- | | | |
| ment June 30, 1948 | | 4,967.21 | |
| Less: Outstanding Checks: | | | |
| No. 370\$ | 149.60 | | |
| No. 375 | 49.65 | | |
| No. 378 | 174.08 | | |
| No. 380 | 8.00 | | |
| No. 386 | 3.25 | | |
| No. 387 | 88.50 | | |
| No. 394 | 193.98 | | |
| No. 401 | 81.28 | | |
| No. 402 | 275.40 | 1,023.74 | |
| True Bank Balance June 30, | | | \$ 3,943.47 |
| 1948..... | | | |

FUNDS ON HAND

| | | | |
|---|-------------|--|--|
| Cash Balance—First Na- | | | |
| tional Bank of Henderson | 3,943.47 | | |
| U. S. Savings Bonds | | | |
| (Value June 30, 1948) .. | 43,006.50 | | |
| Savings Account No. 1— | | | |
| First National Bank of | | | |
| Henderson | 4,008.30 | | |
| Savings Account No. 2— | | | |
| First National Bank of | | | |
| Henderson | 4,026.73 | | |
| Savings Account No. 3— | | | |
| First National Bank of | | | |
| Henderson | 4,036.73 | | |
| K. H. S. A. A. Protection | | | |
| Fund | 619.96 | | |
| Total Funds on Hand June | | | |
| 30, 1948 | \$59,641.69 | | |
| Kentucky High School Athletic Association | | | |
| Statement Of Receipts And Disbursements | | | |
| State Basketball Tournament | | | |
| March 18, 19, And 20, 1948. | | | |

RECEIPTS

| | | | |
|-----------------------|-------------|--|-------------|
| Ticket Sales | \$55,665.50 | | |
| Percentage of Program | | | |
| Concessions | 445.82 | | |
| | | | \$56,111.32 |

DISBURSEMENTS

| | | | |
|-------------------------|----------|--|--|
| Postage | 30.06 | | |
| Printing | 334.77 | | |
| Incidental Expenses (16 | | | |
| Teams) | 960.00 | | |
| Armory Rental and Ad- | | | |
| ditional Services | 1,660.00 | | |
| Ushers & Ticket Takers | 1,936.00 | | |
| Officials | 920.00 | | |
| Publicity | 60.00 | | |

| | | | |
|---------------------------|----------|--|-------------|
| Public Address Announcer | 70.00 | | |
| Scorers & Timers | 280.00 | | |
| Towel Service | 69.30 | | |
| Shot Chart Keepers | 100.00 | | |
| Lodging | 2,641.10 | | |
| Transportation | 1,085.25 | | |
| Meals | 2,773.48 | | |
| Trophies and Awards .. | 367.54 | | |
| Tournament | 125.00 | | |
| Refund Sutcliffe, Post- | 150.00 | | |
| age | | | |
| Assistant Manager, State | | | |
| Ticket Sellers | 135.00 | | |
| Miscellaneous Expense— | | | |
| Tournament Manager .. | 9.00 | | |
| Telephone and Telegraph | 41.14 | | |
| Federal Tax | 9,384.25 | | |
| Public Liability and Rob- | | | |
| bery Insurance | 416.38 | | |
| Service Charges—Bank.. | 8.58 | | |
| Filming State Tour. ... | 500.00 | | |
| | | | 24,056.85 |
| | | | \$32,054.47 |

DISTRIBUTION OF PROFITS

| | | | |
|--|--|-------------|--|
| Transfer to K. H. S. A. A. | | | |
| Checking Account | | \$32,054.47 | |
| Kentucky High School Athletic Association | | | |
| Period From July 1, 1947 To June 30, 1948--- | | | |
| Protection Fund. | | | |

RECEIPTS

| | | | |
|-----------------------------|-------------|-----------|--|
| Bal. on Hand July 1, 1947 | | \$ 152.51 | |
| Football Fees—1928@\$1.50 | \$ 2,892.00 | | |
| Basketball Fees—1409@\$1.50 | 704.50 | | |
| Baseball Fees—80@\$1.50 .. | 40.00 | | |
| Track Fees—77@\$1.50 | 38.50 | | |
| Overpayments of Ins. Fees | 5.75 | | |

Total Receipts 3,680.75

Total of Balance and Receipts \$ 3,833.26

DISBURSEMENTS

| | | | |
|----------------------------|---------|--|--|
| Annual Verification Report | | | |
| Fee | \$ 1.00 | | |
| Postage | 30.03 | | |
| Printing | 124.60 | | |
| Refund on Overpayments .. | 5.75 | | |

Claims Paid

| | | | |
|------------------|----------|--|--|
| Football | 2,801.24 | | |
| Basketball | 245.70 | | |

Service Charges—Bank ... 4.98

Total Disbursements 3,213.30

BANK RECONCILEMENT

| | | | |
|----------------------------|-------|-----------|--|
| Less: Outstanding Checks: | | | |
| Total Funds on Hand | | \$ 619.96 | |
| Balance per Bank State- | | | |
| ment June 30, 1948 | | 712.36 | |
| No. 175 | 5.00 | | |
| No. 183 | 39.00 | | |
| No. 184 | 15.00 | | |
| No. 185 | 33.40 | 92.40 | |
| True Bank Balance June 30, | | | |
| 1948 | | \$ 619.96 | |

Sixteenth Annual Kentucky High School Tennis Tournament

Bellevue High - May 31 - June 1, 1948

SINGLES

QUARTER-FINALS

SEMI-FINALS

FINALS

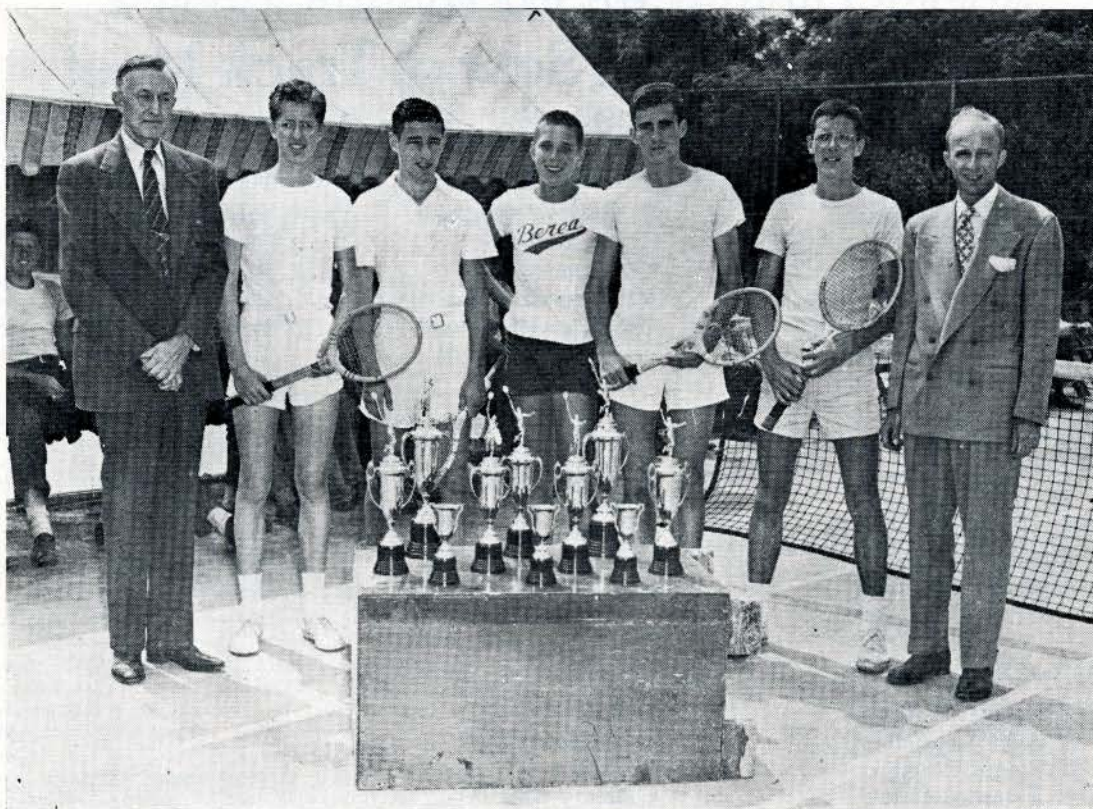
| | | | | |
|----------------------|-------------------------|-------------------------|----------------------|----------------------|
| Ewald-Male | Ewald | Ewald: 6-3; 6-1 | Ewald: 6-3; 6-4 | Ewald: 8-6; 6-4 |
| Bye | | | | |
| Steere-Danville | Steere: 6-0; 3-6; 6-1 | | | |
| Maturo-Georgetown | | | | |
| Qualey-N'port Cath. | Qualey: 6-1; 6-1 | Epling: 6-1; 6-0 | | |
| J. Chestnut-B. Green | | | | |
| Epling-Henderson | Epling | | | |
| Bye | | | | |
| McPherson-Holmes | McPherson: 6-1; 6-1 | Costello: 5-7; 6-4; 6-3 | Otten: 6-0; 6-2 | |
| Griffin-Hopkinsville | | | | |
| Frey-St. Frances | Costello: 4-6; 7-5; 6-1 | | | |
| Costello-St. Xavier | | | | |
| Wickman-St. Henry | Jones: 6-2; 8-6 | Otten: 6-0; 6-0 | | |
| Jones-University | | | | |
| Otten-Bellevue | Otten: 6-0; 6-1 | | | |
| Snow-Dry Ridge | | | | |
| Trieschman-Bellevue | Trieschman | Trieschman: 6-0; 6-1 | Trieschman: 6-2; 9-7 | Evans: 6-4; 0-6; 6-2 |
| Bye | | | | |
| Koper-St. Xavier | Koper: 6-0; 6-0 | | | |
| Heimbrock-St. Henry | | | | |
| Scott-Madisonville | McMasters: 6-3; 6-3 | McMasters: 6-0; 6-1 | | |
| McMasters-Male | | | | |
| Klein-Hopkinsville | Klein | | | |
| Bye | | | | |
| Evans-Berea | Evans: 6-2; 6-1 | Evans: 6-0; 6-4 | Evans: 2-6; 6-2; 6-0 | |
| Mountel-N'port Cath. | | | | |
| Wheeler-Holmes | Price: 6-2; 6-3 | | | |
| Price-Harrodsburg | | | | |
| Strauss-University | Strauss: 7-5; 6-3 | Nutter: 6-0; 6-0 | | |
| M. Chestnut-B. Green | | | | |
| Nutter-Georgetown | Nutter | | | |
| Bye | | | | |

SEEDS:

1. Don Ewald-Male
2. Paul Trieschman-Bellevue
3. Jim Nutter-Georgetown
4. Roger Otten-Bellevue

Ewald: 7-5; 7-5

Tennis Trophy Winners and Officials



(Left to Right) Dr. H. H. Downing, tourney judge; Joe Wagner, member of Louisville Male's second place doubles team; Donald Ewald, singles champion and member of Male doubles team; Bill Evans, Berea, who finished second in singles to Ewald; Paul Trieschman and Roger Otten, Bellevue, State doubles champs; and Coach Roger Kline, Bellevue, tournament manager.

| QUARTER-FINALS | | SEMI-FINALS | FINALS |
|------------------|----------------------|------------------------|---------------------|
| Male | Male | | |
| Bye | | Male: 6-0; 6-0 | |
| Bowling Green | Bowling Green | | |
| Bye | | | Male: 6-4; 4-6; 6-3 |
| Newport Catholic | St. X: 6-2; 2-6; 6-4 | | |
| St. Xavier | | Georgetown: 6-4; 6-2 | |
| Georgetown | Georgetown | | |
| Bye | | | Bellevue: 6-4; 6-3 |
| Hopkinsville | Hopkinsville | | |
| Bye | | Hopkinsville: 6-4; 6-4 | |
| St. Henry | University: 6-1; 6-2 | | |
| University | | | |
| Holmes | Holmes | | Bellevue: 6-1; 6-1 |
| Bye | | Bellevue: 6-0; 6-1 | |
| Bellevue | Bellevue: 6-0; 6-1 | | |
| Dry Ridge | | | |

SEEDED TEAMS:

1. Ewald & Wagner-Male
2. Otten & Trieschman-Bellevue
3. J. Nutter & B. Nutter-Georgetown
4. Klein & Griffin-Hopkinsville

RESULTS

Kentucky High School Track Meet

Bellevue, Kentucky - June 2, 1948

100 Yard Dash—

1. Foster-Tilghman.
 2. Grider-Male.
 3. Hood-Georgetown.
 4. Lewis Tilghman.
 5. J. Burks-Manual.
- Time: 10.4.

200 Yard Low Hurdles—

1. Foster-Tilghman.
 2. Wyrick-Male.
 3. Thorne-Male.
 4. Blackwell-Barret.
 5. Stephenson-Holmes.
- Time: :24.

High Jump—

1. Koke-Bellevue.
 2. Shannon-Barret.
 3. Roessler-Manual.
 - Sossion-Male.
 5. Rowlett-Murray.
 - Ervin-Highlands.
- Height: 5' 10 $\frac{5}{8}$ ".

220 Yard Dash—

1. Foster-Tilghman.
 4. Lewis-Tilghman.
 3. Fowler-Male.
 4. Knasel-Lloyd.
 5. Hood-Georgetown.
- Time: 23.6.

880 Yard Relay—

1. Tilghman.
 2. Male.
 3. Bellevue.
 4. Manual.
 5. St. Xavier.
- Time: 1:33.3.

Broad Jump—

1. Foster-Tilghman.
 2. L. Jones-Manual.
 3. Voor-St. Xavier.
 4. Augsback-Bellevue.
 - 5.. Knasel-Lloyd.
- Distance: 21' $\frac{1}{4}$ ".

440 Yard Run—

1. Denny-St. Xavier.
 2. Augsback-Bellevue.
 3. Planck-Manual.
 4. Hamilton-Male.
 5. Hodge-Henry Clay.
- Time: 52.7

Mile Relay—

1. Male.
 2. Manual.
 3. Dayton.
 4. Henry Clay.
 5. Murray.
 - Barret.
- Time: 3:33.4.

880 Yard Run—

1. Orth-Highlands.
 2. Fraley-Barret.
 3. Rouse-University.
 4. Johnson-Dayton.
 5. Muth-St. Xavier.
- Time: 2:04.1.

Pole Vault—

1. Rapp-Manual.
 2. Waltrip-Highlands.
 - Hulvey-Manual.
 4. Rogers-Danville.
 - Skinner-Tilghman.
 - Malone-Newport.
 - Merchant-Male.
- Height: 11' 8".

TOTAL POINTS

| | |
|-----------------------|------|
| Male | 39.3 |
| Tilghman | 38.3 |
| Manual | 26 |
| St. Xavier | 25 |
| Bellevue | 15 |
| Highlands | 12 |
| Barret | 10.5 |
| Lafayette | 10 |
| University High | 9 |
| Campbell | 9 |
| Holmes | 7 |
| Dayton | 6 |
| Murray High | 5.5 |
| Georgetown | 4 |
| Lloyd | 3 |
| Henry Clay | 3 |
| Danville | .8 |
| Newport | .8 |

Mile Run—

1. Price-University.
 2. Sullivan-Holmes.
 3. Ginger-Male.
 4. Jacquiot-Tilghman.
 5. Calhoun-Highlands.
- Time: 4:38.8.

Shot Put—

1. Myers-Lafayette.
 2. J. Hornek-St. Xavier.
 3. Loos-Campbell County.
 4. Clancy-St. Xavier.
 5. Leile-Highlands.
- Distance: 46' 9 $\frac{3}{4}$ "

120 Yard High Hurdles—

1. Bodner-St. Xavier.
 2. Alexander-Murray.
 3. Wyrick-Male.
 4. Stephenson-Holmes.
 5. Murray-Dayton.
- Time: :16.

Discus—

1. Trapp-Campbell County
 2. Myers-Lafayette.
 3. Haley-Tilghman.
 4. Voor-St. Xavier.
 5. Price-Tilghman.
- Distance 132' 5 $\frac{3}{8}$ "

School's Ratings On Basketball Officials

The following ratings were received on basketball officials registered with the K. H. S. A. A. during 1947-48. The numbers following each name represent respectively the number of Excellent, Good, Fair, and Poor ratings given to the official.

Abney, Bob, 1-0-0-0; Adams, Bill, 2-0-0-0; Adams, Lucian, 3-14-2-1; Alford, Kenneth, 0-1-0-0; Allen, Bobby, 10-12-3-4; Allen, John L., 0-0-1-0; Allen, Talmage Y., 0-10-0-0; Anderson, N. J., 0-0-3-0; Applegate, William Leon, 0-2-0-1; Art, James, 1-5-0-4; Arterburn, Edward L., 1-0-8-1; Ashby, Bobby, 0-3-2-2; Ashby, Kenneth, 0-3-2-2; Ashby, James R., 0-5-1-1; Atnip, C. W., 0-3-1-1.

Bailey, Arville, 0-3-0-0; Baird, Bill, 0-0-1-0; Baker, Earl C., 1-2-0-1; Baker, Jack B., 12-14-3-5; Baker, James E., 3-4-2-3; Baker, Wilford B., 0-10-0-0; Baldree, James E., 1-15-9-1; Ballard, Robert A., 0-1-0-1; Banko, Gus, 7-5-0-0; Barlow, Jay R., 19-9-0-0; Barnes, Duerson H., 2-5-1-0; Barnes, Lowell, 12-6-0-0; Barnett, J. W., 3-8-3-1; Barr, R. D., 0-0-1-0; Barr, Wm. J., 0-0-0-1; Barrett, Chas. F., 0-0-1-0; Barrett, Monroe E., 0-1-0-0; Basham, Bailey, 0-5-1-5; Bass, Willard A., 3-2-0-0; Beagle, W. O., 0-1-0-0; Bean, Al H., 1-0-0-0; Beard, Calvin, 0-0-4-0; Biersdorfer, Jim, 0-1-0-0; Bell, Espy, 0-10-6-2; Bell, Thomas P., 5-21-1-0; Bell, Stanton Earl, 2-0-1-0; Bell, Wilton E., 0-0-6-0; Benassi, Chance, Jr., 14-7-5-0; Benedict, Steve, 10-2-2-0; Bennett, Howard, 0-0-11-0; Bennett, J. D., 0-5-1-1; Bennett, Logan, 9-4-3-0; Berry, Norman W., 0-1-0-0; Betz, Richard L., 18-13-9-0; Bishop, Martin D., 0-0-1-0; Black, Ralph Amos, 1-1-1-0; Black, William A., 0-1-0-4; Blackburn, Clyde W., 0-5-0-0; Blair William C., 0-5-0-0; Blankenship, Macon, 0-1-0-0; Bobbitt, Forrest C., Jr., 0-0-0-2; Boemker, Robert, 0-3-3-3; Bolton, Conley, 0-1-1-0; Borchelt, Walter C., 0-0-2-6; Borden, Willis, B., 0-3-1-0; Bostic, Ralph, 1-8-1-0; Bottom, Miner, 0-0-1-1; Bowers, Paul F., 0-2-3-1; Bowling, Floyd, 5-1-0-1; Bowman, Carl E., 0-2-0-0; Bozarth, H., Jr., 0-4-1-0; Branaman, William H., 27-18-6-1; Branham, Frank B., 0-3-0-0; Brantley, Alfred C., 0-8-4-0; Braun, E. F., 9-9-1-0; Braun, Robert, 13-18-0-1; Breig, Woodrow W., 0-1-0-0; Bridges, Bennie, 2-12-3-0; Brinkmeyer, Robert, 0-1-1-0; Broderick, Carroll A., 6-7-1-0; Brooks, R. E., 0-4-0-0; Brown, Edward G., 1-0-0-0; Brown, James W., 5-21-4-4; Brown, Joe O., 14-6-2-1; Brown, Paul, 1-0-0-0; Brown, Sam F., 33-5-6-0; Brumbaugh, Donald S., 0-0-1-1; Brumfield, Bernard R., 0-16-2-0; Bruton, Forrest A., 0-1-0-0; Bryan William B., 2-1-8-0; Bryant Charles H., 11-12-8-1; Buchanan, William H., 28-9-3-0; Bunger, Fred, 9-10-0-1; Burch, Clarence, 20-22-7-0; Burd, Orville D., 0-0-4-0; Burkhart, Ralph C., 0-5-1-0; Burks, Yancy, 0-1-0-0; Burman, John, 4-1-0-0; Bush, Billy R., 0-0-0-1; Bush, James B., 2-18-0-0; Butler, Donald, 0-3-1-0; Butler, Morris R., 6-10-3-0.

Campbell, George H., 0-4-1-0; Campbell, James B., 0-0-1-2; Campbell W. Robert, 11-19-1-0; Carlisle, John R., 1-0-1-0; Carlton, J. C., 0-2-0-0; Carrico, Charles M., 4-0-2-0; Carrington, Paul, 0-4-2-0; Carson, John Franklin, 0-0-0-1; Castle, Floyd, Jr., 37-16-8-0; Cecil, John O., Jr., 2-0-6-1; Center, M. E., 0-0-0-1; Chambers, Bill, 0-0-1-0; Chambers, Creighton, 0-3-0-0; Chambers, Marshall, 1-4-3-1; Chaney, Russell, 0-3-0-0; Chappell, Joseph E., Jr., 11-27-1-1; Charmoli, Alfred M., 0-0-3-1; Chattin, Charles E., 5-1-3-0; Chattin, Ernest P., 8-12-1-1; Chrisman, Charles B., 0-0-4-1; Chumbler, W. W., 4-8-0-0; Clark, Samuel H., 5-19-12-2; Clay, Maurice

A., 0-3-3-0; Clegg, James B., 0-8-6-2; Cliff, Charlie, 19-0-2-0; Cline, Roy Ernest, 0-1-0-0; Coburn, Elsworth G., 0-0-2-3; Coffey, Jimmy, 0-6-3-1; Cohen, Irvin H., 0-1-0-0; Coleman, Duke, 18-33-3-0; Collins, Charles E., 0-2-0-0; Colston, Richard H., 9-16-5-4; Combs, Walter H., 7-10-6-6; Combs, Travis, 10-6-3-0; Comley, Connie, 0-7-5-2; Conley George D., 9-18-1-1; Conley, Tom W., 0-0-0-1; Connor, Jim, 0-1-1-0; Connor, Neal, 0-5-1-0; Conover, Joe, 4-0-1-2; Cook, Edgar C., 0-0-1-0; Cook, Roy C., 0-1-1-0; Cooper, Isadore, 0-7-3-0; Cooper, John W., 28-18-4-2; Cooper, Warren, 33-9-1-1; Cornett, Chalmer B., 0-10-8-3; Corbett, Edward, 4-2-0-0; Cornwell, Lucien, L., 0-5-0-1; Cosby, H. P., 0-0-2-1; Cover, Harry E., 9-8-2-0; Cox, Cliff J., 9-18-7-0; Craddock, J. D., Jr., 0-0-0-1; Craig, John G., 0-6-0-1; Craig, Randy, 0-5-3-0; Crawford, Paul C., 4-5-0-0; Creasy, Frank L., 0-5-3-1; Crowe, A. Y., 0-1-3-0; Crow, Delmas, 0-0-2-0; Cabbage, Thomas H., 0-1-0-0; Cullivan, Jim, 0-1-2-0.

Daniel, William Clifton, 11-1-10-0; Daniels, Douglas, 0-2-6-2; Daniels, Wm. R., 0-0-1-0; Davidson, George W., Jr., 0-9-4-0; Davis, Elra R., 0-9-3-0; Davis, Ernest, 0-0-1-0; Davis, Johnny E., 0-0-2-0; Davis, Ralph, 21-13-0-0; Deason, John T., 0-0-0-1; DeHaven, Major, 0-1-2-0; DeMoisey, John, 31-6-2-3; Dennison, William C., 0-2-0-0; Denton, Charles, 0-1-0-0; DeVault, Don, 26-8-0-3; Detherage, William S., 2-5-0-0; Dewey, Curtis M., 5-0-0-0; Dickerson, Dan, 0-0-3-0; Dobbs, William H., 0-2-1-2; Dobson, James W., 0-2-0-0; Dobson, Kenneth, 0-0-2-0; Dobson, Lawrence, 0-1-0-0; Dorris, Bland, 9-13-10-0; Dorsey, Ralph, 3-6-2-1; Downard, John J., 8-8-2-0; Downing, Howard J., 5-10-2-0; Doyle, Don, 2-1-1-0; Dromo, John, 14-4-3-3; Dubia, Christian F., 7-12-5-8; Dunaway, Paul R., 0-2-0-0; Duncan, Earl S., 1-6-0-0; Duncan, Hickman E., 0-0-4-0; Duncan, T. S., 0-5-1-0; Dunevant, William L., 0-1-0-0; Duning, Carl F., Sr., 22-4-2-1; Dunn, S. R., 0-3-0-1; Durham, Edward M., 1-4-2-0; Durham, J. P., 0-0-1-0; Durkin, Jack H., 0-3-1-0.

Eades, Walter, 0-4-0-0; Eddings, Forrest W., 0-2-1-0; Edelen, Benjamin R., 6-5-2-0; Edwards, Bill M., 3-1-1-0; Edwards, Romey, 1-3-0-0; Ellington, Russell, 13-17-5-1; Elliott, Silas, 0-2-19-0; Ellis, Charles, 10-13-6-1; Ellis, Thomas, 1-8-1-1; Elrod, Turner, 3-0-0-0; Enlow, Eugene I., 0-1-0-0; England, Estel, 0-2-1-0; Ernst, Ray, 4-9-1-0; Evans, Tom, Jr., 0-2-0-1; Everett, Gene Edwin, 0-4-0-2; Ewing, Roscoe L., 6-4-1-0.

Fagues, Homer, 0-4-1-0; Farley, Thomas H., 0-0-1-0; Farmer, Lyles, 0-5-0-1; Fawbush, Stanley, 0-8-1-0; Feltner, Charles, 0-2-3-0; Fey, Allen, 0-1-0-1; Fields, Follace, 0-7-2-1; Figg, Charles R., 1-1-3-0; Finnerty, Edward, 0-5-1-0; Fisher, Hal, 0-13-9-0; Fish, Arnold P., 0-1-0-0; Fish, Earle, 0-0-0-1; Flagher, Louie Allen, 0-1-0-0; Fleming, James, 22-19-1-0; Flora, Ben, 2-0-1-0; Ford, Douglas, 0-1-0-0; Forsythe, Robert, 56-24-8-2; Frank, Clarence H., 0-3-0-0; Frecka, Charles, 0-2-2-0; Freihaut, Herman P., 0-1-0-0; Fritz, Harry G., 26-6-12-5; Fulton, Elmer D., 2-7-1-0.

Gant, William G., Jr., 7-16-5-2; Gardner, Daniel H., 42-14-4-1; Gardner, Howard E., 0-7-2-1; Gardner, Woodford Lloyd, 7-13-2-0; Gellenbach, Lee W., 2-3-0-0; George, Raymond, 2-5-2-2; Geselbracht, Albert, 4-11-3-0; Gibson, William T., 4-7-6-8; Gilmore, Warren E., 5-8-0-2; Gilreath, David W., 0-1-0-0; Glass, Thomas Sherwood, 0-3-2-1; Goff, Otto W., 0-0-4-2; Goranflo, R. E., 22-26-0-0; Gordon, R. T., 0-3-0-0; Grandle, Olen R., 3-12-1-16 Grannan,

Paul E., 0-1-1-0; Gray, Raymond F., 1-17-4-0; Green, Augustus E., 0-2-2-0; Green, Floyd L. Jr., 0-6-0-1; Greene, Robert J., 2-1-0-0; Green, Tom H., 39-14-3-0; Greenslaid, James W., 1-4-0-0; Greenwell, John E., 0-0-2-0; Greenwell, Tommy, 0-0-1-1; Griffin, Charles D., 0-0-2-0; Grimes, J. D., 0-6-0-0; Grimes, Orbin, 0-7-0-0; Grissom, William H., 0-2-1-0; Grogan, Paul, 0-0-2-1; Groves, Joe R., 1-0-0-0.

Hackett, John, 6-1-1-0; Hadden, Newell P., Jr., 27-15-1-2; Haffey, Stan, 5-14-2-0; Haines, Jack W., 3-5-0-1; Hale, Arles V., 0-0-1-0; Hall, Charlie, 0-3-4-6; Hall, Elvis, 27-8-0-0; Hall, Joe G., 0-0-1-0; Hall, Norman, 15-20-3-0; Hall, Paul R., 0-1-0-0; Hall, Pryor E., 0-1-1-1; Hamilton, Kern, 0-13-2-3; Hammonds, William Earl, 0-0-1-0; Hanes, Edward C., 7-7-5-1; Hankins, Virgil A., 1-0-1-0; Hanshue, Luther, 0-1-1-0; Hardcastle, Hubert W., 0-3-0-0; Hardy, Donald, 3-0-1-0; Harmon, F. E., Jr., 0-3-3-0; Harmon, Miller H., 0-1-8-1; Harper, John J., 1-2-0-0; Harris, George F., 11-5-2-0; Hart, George Jr., 0-15-1-0; Hartley, William, 13-4-0-0; Hash, Ova, 1-7-2-2; Hatchett, Walter P., 0-2-0-0; Hawkins, Strather William, 1-1-0-0; Hayes, Orville, 0-1-0-0; Hayes, James, 3-2-0-0; Hazelrigg, William B., 6-5-3-0; Hazelwood, Arnold, 1-0-0-0; Head, Elmo C., 6-21-3-1; Heldman, John Jr., 6-1-0-0; Helwig, George, 0-0-1-1; Henderson, Brooks, 0-5-3-0; Henderson, Robert L., 0-1-0-0; Hendon, C. B., 2-0-1-0; Henry, Oliver F., 1-0-0-0; Henson, Howard, 0-1-4-0; Herb, Pete, Jr., 2-2-0-0; Hickey, Harold H., 2-3-0-1; Hicks, Billy, 1-12-7-0; Hicks, Robert E., 6-4-8-3; Hill, George W., 0-0-2-1; Hines, Cliff, 9-16-3-1; Hobbs, Ralph E., 14-22-1-0; Hodges, Marvin H., 0-0-1-4; Hoferer, Louis R., 0-1-2-1; Hofstetter, Joe, 0-8-1-0; Hogan, John E., 8-6-0-0; Hogg, James S., 2-0-1-1; Holeman, Fletcher D., 21-8-3-1; Hollen, Ivan, 0-3-0-0; Hollon, James I., Jr., 0-7-0-3; Holly, Jack, 0-3-6-0; Holt, Vernon, 0-11-0-1; Honaker, Clifford B., 3-6-7-0; Hood, Clayton, 15-6-1-0; Horning, Ralph, 8-12-0-0; Horton, Peyton, A., 0-2-1-0; Hoskins, Olan, 0-2-0-1; Hough, Robert, 0-0-1-0; House, Darrell, 19-16-4-0; Howard, Carl F., 0-2-2-0; Howard, Joe M., 6-23-2-1; Howard, Z. R., 2-1-2-0; Hubbard, J. D., 0-5-1-0; Huber, Kenneth, 5-0-0-0; Hudson, Bob, 9-3-1-0; Hudson, J. D., 3-3-2-0; Huff, Waymon C., 3-0-1-0; Hughes, Charles F., 5-30-4-0; Hughes, William R., 7-13-0-0; Hunt, Joseph S., Jr., 0-0-2-0; Hurd, Fred, 0-9-6-0; Hurley, James E., 0-4-7-2.

Inman, Thomas Briscoe, 0-10-7-0; Insko, James H., 0-5-5-1; Isert, Louis, 0-0-0-4.

Jackson, Coleman J., 2-10-6-1; Jackson, Ralph, 0-2-1-0; Jackson, Richard T., 0-3-1-0; Jenkins, John E., 0-1-0-0; Jenkins, Phillip, 0-0-0-1; Jennings, Denzil E., 0-3-1-0; Jennings, Jack, 0-4-5-2; Jerdon, Lannes, 0-0-3-3; Jerger, Carl B., 6-3-0-1; Johns, Wilson, 0-2-0-0; Johnson, Ben P., Jr., 0-1-0-0; Johnson, Bernard, 5-2-0-0; Johnson, Bill, 3-5-2-0; Johnson, Everett, 0-1-3-0; Johnson, Gerald N., 0-1-0-0; Johnson, James Harold, 25-6-3-0; Jones, Boyer, 0-0-2-1; Jones, Charles, Jr., 2-4-7-0; Jones, Dukie, 30-16-2-3; Jones, James Calvin, 0-0-1-0; Jordon, Kenneth P., 8-10-0-0.

Keller, Herman F., 0-3-0-0; Kercheval, H. C. Jr., 0-2-0-4; Kessinger, Ben L., Jr., 0-3-1-0; Kessinger, Thomas B., 0-4-0-0; King, Lester H., 1-3-2-0; King, J. T., 0-2-0-0; King, P. J., 3-11-4-7; King, Roy, 4-3-1-0; King, Roy N., 12-7-1-0; King, Sam, 8-14-1-6; Kinsella, Bob, 0-2-1-0; Kirby, Harold E., 0-1-2-0; Kitchen, W. Woodrow, 0-0-0-1; Knott, James E., 11-11-7-1; Krekel, John W., 0-0-1-1.

Lacy, Elsworth, 0-2-1-1; Lakin, Harold, 0-9-0-1; Lamb, C. G., 2-3-0-0; Lane, Harry F., 0-2-0-0; Lawrence, Dave, 1-1-0-0; Lawson, Carl E., 1-4-5-0; Lawyer, Dean Louis, 0-0-0-1; Lawyer, Ray, 0-0-0-2; Leach, Leslie, Jr., 0-4-0-0; Leath, Joseph M., 0-0-2-0; Lee, Richard, 0-2-0-0; Lee, Robert G., 0-4-1-2; Lee, Robert L., 4-16-5-0; Leech, Joe W., 0-1-0-0; LeGrand, Leslie, 0-5-1-0; Lenon, M. E., 0-6-4-1; Lewis, Herb, 0-0-0-1; Lewis, L. L., 2-12-1-8; Lewis, Thomas A., 3-6-5-0; Lile, William A., 0-12-0-0; Lindsay, Gordon R., Jr., 4-13-3-0; Linker, Joe D., 0-2-5-0; Litchfield, Louis, 5-4-4-8; Litteral, Ova B., 4-3-3-0; Litton, H. Johnny, 0-0-3-0; Logan, Carl D., 0-0-1-0; Logan, Donald Earl, 0-1-0-0; Longenecker, David M., 28-11-3-3; Looney, Charles, 0-4-5-0; Looney Dick, 5-3-1-0; Long, Harry M., 5-19-4-0; Losey, Homer E., 1-11-5-2; Lovell, Joe, 0-1-1-0; Loving, Edwin F., 0-1-1-0; Lowe, William H., 0-1-0-0; Lowrey, Melvin, 0-0-0-2; Lyon, Paul, 0-3-1-0.

McAninch, E. R., 0-18-3-0; McCartt, Dock S., 0-5-5-0; McCreary, John F., 7-7-2-0; McCuiston, Pat M., 2-4-2-0; McCulloch, Malcom, 17-6-0-0; McDowell, Glen D., 10-21-0-0; McGhee, Lawrence, 0-5-3-2; McGuffey, Harold, 17-13-1-2; McGuffey, Lloyd, 5-3-6-0; McGuffey, Roy E., 5-2-4-0; McGuire, Ronald, 0-6-0-0; McHale, Edward J., 0-4-1-0; McIntosh, Ralph, V., 0-0-8-1; McKown, C.H., 7-1-0-0; McLain, James H., 6-16-5-1; McMillan, J.N., 11-29-3-0; McNabb, Edgar, 12-8-1-0; McPhearson, Harold, 0-0-3-2.

Macon, Max, 5-24-3-4; Macy, Tom, 0-9-1-1; Macy, William G., Jr., 0-0-5-1; Mahan, James S., 0-11-1-0; Maines, George, 0-0-2-0; Majors, Damon, 0-5-0-0; Manson, Harold, 13-9-1-5; Mantle, Bourke, 18-6-5-0; Markham, J. Paul, 0-12-4-1; Marshall, Robert, 0-2-1-2; Marsili, Frank, 0-4-0-0; Martin, David P., 0-8-1-0; Mason, Earl W., 0-1-0-0; Mason, James E., 9-8-3-3; Mastroleo, Anthony R., 2-26-6-1; Martin, Hugh, Jr., 6-5-1-3; May, Gene F., 0-3-3-1; Mayer, Charles L., 1-24-4-0; Mays, George Lee, Jr., 0-0-2-0; Mays, Ralph J., 33-21-0-1; Meade, Foster, 1-3-0-0; Melvin, James C., 0-0-1-0; Menees, James C., 0-0-2-0; Meredith, Wilmer H., 15-11-1-3; Meyer, Louis R., 2-0-0-0; Milbern, Joda, 6-5-2-0; Milkovich, Milan, 0-1-0-0; Miller, Bob, 28-17-4-0; Mills, Ralph, 1-3-1-0; Milton, Willis C., 1-8-7-1; Mitchell, George E., 10-21-0-2; Mitchell, James A., 0-3-7-2; Moeller, Winton L., 5-8-0-0; Moellering, Louis H., 0-10-3-2; Mohler, Myrvin H., 0-3-0-0; Molen, James P., 0-3-2-0; Monroe, Howard, 0-0-1-0; Moore, Charles D., 5-0-4-0; Moore, Truman E., 0-0-1-0; Morgan, Lawrence, 0-0-3-1; Morris, Bob, Jr., 2-5-2-0; Morris, Edmund J., 0-2-1-0; Morris, Landis O., 0-1-2-1; Moseley, Mark, 0-19-1-0; Moss, Elwood, 0-1-0-1; Moss, Walter Anderson, 0-1-0-0; Mudwilder, Robert H., 0-0-0-1; Mullins, Fon, 0-1-0-0; Mullins, John, 0-2-0-0; Murphy, William Joseph, 2-1-0-0; Murrell, Ralph E., 0-0-2-0; Mussman, Ralph Jr., 0-5-1-0; Mutchler, Bradford, 5-2-0-0; Myers, Robert B., 4-7-0-0.

Nance, W. A., 0-0-1-3; Nance, William B., 0-4-7-1; Nau, William E., 3-9-2-0; Newby, Paul H., 19-0-0-0; Newnam, Luther Garland, 0-1-1-3; Newsom, Elza, 0-21-2-2; Newsom, L. M., 0-0-2-0; Newsom, Marley, 2-6-4-3; Newsome, Forrest, 0-12-1-1; Newton, Reason G., 0-5-4-0; Nicely, Lewis W., 0-0-1-1; Niemeier, Pelsor C., 0-2-1-2; Nimmo, L. W., 13-11-3-0; Noel, Bobby Keith, 0-1-0-0; Nolan, Robert E., 3-0-0-1; Nord, Edward M., Jr., 0-1-3-1; Norfleet, Frank F., 0-3-1-2; Northrup, William O., 16-15-1-0; Nunumaker, John, 9-19-6-3.

O'Brien, Tim, 3-0-0-0; O'Daniel, Henry, 0-3-0-0; O'Dell, Edw., 0-8-2-0; O'Hara, Jay J., 1-3-0-3; Oldham, Charles, 1-0-1-0; O'Nan, Eugene, 0-6-9-1; O'Neal, Bill, 0-0-1-0; O'Neal, Bud, 0-1-1-3; Osborne, Bill, 1-8-2-2; Osborne, Clarence R., 0-1-0-0; Owen, James Gerald, 4-6-1-4; Owens, Frank J., Jr., 11-7-8-0; Owens, R. L., Jr., 0-0-3-0; Oxley, Lus, 20-52-7-4.

Parker, Clyde W., 2-1-0-0; Parker, James D., 2-4-0-0; Paschall, Joe D., 2-19-10-0; Patrick, Charles C., 0-7-2-0; Patterson, G. Rowland, 7-25-2-0; Peden, Sam, 0-4-4-0; Peek, Kenneth H., 0-0-2-2; Perkins, Ken E., 0-0-1-0; Perry, Charles R., 0-0-1-0; Perry, William D., 0-3-3-1; Petrie, Frank, 0-0-1-0; Pewitt, Charles O., 0-1-0-1; Phelps, Rudy, 3-5-1-0; Phelps, William E., 0-1-0-0; Phillips, Bob, 4-0-3-1; Phillips, J. Noland, 0-1-0-0; Phillips, Paul, 27-11-7-1; Phillips, Raymond, 5-0-0-0; Philpot, Ford R., 6-20-0-3; Philpot, Robert A., 3-14-6-4; Pickett, Walter J., 0-2-0-0; Pitzer, J. H., 0-0-4-1; Playforth, R. H., 2-0-0-0; Poplin, Fred, 0-4-0-2; Poppas, Nicholas, 0-7-2-1; Porter, C. A., 6-22-4-1; Porter, Webb, 3-1-1-0; Posey, Addison, 0-0-0-2; Posey, William B., 1-12-2; Postlewaite, Clarence A., 3-0-5-0; Potter, James W., 0-0-1-0; Powell, Jules N., 0-4-1-0; Prater, Earl C., 0-5-1-0; Preece, James A., 7-13-4-0; Prewitt, Si, 1-4-0-1; Price, Charles, 1-3-4-1; Price, Gerald F., 0-5-2-1; Price, Richen, 3-3-8-0; Prow, James D., 1-0-0-0; Purkhiser, James C., 0-1-0-1; Pursifull, Cleophus, 6-12-3-4.

Radjunas, Stan, 10-11-0-3; Ramey, H. J., 1-11-5-2; Ramsey, James B., 13-5-6-2; Randolph, Charles D., 7-7-2-2; Raque, Norbert N., 0-3-0-1; Ratliff, John R., 6-4-5-2; Ratterman, Bernard W., 29-27-6-3; Reagan, John L., 30-4-5-0; Reams, William E., 1-0-0-0; Redmond, Simon B., 0-1-0-0; Reed, Joe S., 0-2-0-1; Rentz, Thomas W., 7-8-2-1; Ries, Robert R., 0-2-0-2; Reynolds, Don R., 2-7-1-2; Reynolds, Roy D., 0-2-3-0; Richards, Logan, 1-2-0-0; Richardson, Lewis H., 0-4-2-0; Riddle, George W., 1-8-3-0; Roark, Jimmy, 0-2-1-0; Robbins, Burgess, 0-1-0-1; Robbins, John R., 1-0-0-0; Roberts, Eugene Lee, 2-0-0-0; Roberts, Lloyd E., 2-0-0-1; Roberts, Paul, 0-2-0-0; Robertson, Everett, 26-14-5-0; Roberts, Earl C., 2-5-2-0; Roberts, John G., Jr., 0-7-2-0; Roche, James M., 12-13-0-0; Rose, Andy, 0-6-9-4; Rose, Harold, 0-6-0-0; Rothschild, Charles P., 7-5-0-5; Rouse, Clyde L., 5-18-4-0; Royalty, Glenn, 11-2-0-0; Rosen, Morris, 1-0-0-0; Rubarts, Leland G., 0-7-6-0; Rudd, Marco M., 4-10-7-7; Rudd, W. T., 0-1-0-0; Rushing, Champ, 0-1-1-0; Ruehl, William L., 0-0-0-1; Russell, Eugene D., 1-1-0-0; Rutter, Fred A., 4-14-2-0.

Sadler, G. A., 0-1-0-0; Sammons, J. Q., 3-4-2-0; Sandell, Arthur H., 0-4-0-1; Sanders, Foster J., 1-3-3-0; Sanders, Richard, 0-0-1-1; Sankey, Lee R., 11-2-3-0; Saunders, Harold, 0-6-5-0; Scheben, William, 0-14-1-2; Schmidt, C.J., 1-4-2-2; Schmidt, Ralph O., 4-13-0-0; Schmitt, K. F., 36-14-3-1; Schuette, Frederick, 1-1-1-0; Scott, John J., 0-1-1-0; Scott, Kenneth, 0-3-1-0; Seesholtz, Arthur L., 0-2-1-1; Settle, Evan E., 4-6-3-2; Settle, Ray, 2-6-0-0; Settle, Roy, 4-16-4-0; Shannon, Ed H., 5-16-1-2; Shannon, Joe R., 0-1-2-0; Shannon, W. A., 0-7-8-2; Shaver, Roy A., 2-0-1-0; Shaw, James T., 3-0-0-0; Shaw, John H., 0-0-2-2; Shaw, Russell, 1-3-0-0; Sheeran, Lee, 1-4-6-3; Shaw, Stanley E., 0-9-1-0; Shipley, Clarence E., 0-5-1-0; Shively, Bernie, 9-6-0-0; Shivers, Millard, 10-3-0-3; Shoupe, Flem R., 0-0-1-0; Showalter, John, 27-14-1-1; Shuster, Charles, 10-18-3-4; Siler, Robert L., 0-0-0-1; Silliman, George R., 2-14-15-4; Simmons, Pedro, 0-5-0-0; Simpson, Dwight, 0-1-0-0; Singleton, Joe, 0-5-0-0; Smith, Charles E., 0-3-0-0; Smith, Eddie K., 2-3-0-3; Smith,

Edgar J., 0-1-1-2; Smith, Ralph, 0-0-1-0; Smith, William J., 2-6-2-0; Smith, Wyatt, 20-24-12-2; Snyder, F. L., 0-0-0-1; Sosh, Larue, 17-5-1-0; Sosh, Nelson, 17-5-1-0; Sosh, Woodrow P., 16-4-7-2; Souder, Don, Jr., 0-4-1-3; South, Wendell L., 0-13-0-1; Space, Carl, 2-4-1-3; Sparks, Harry M., 9-12-7-2; Spinkle, Ivan, 15-1-4-1; Spurgeon, Kermit, 0-15-2-0; Spurlock, Kenneth, 0-4-10-1; Staggs, D. D., 0-1-1-0; Standridge, Charles R., 0-3-0-0; Stanley, Turney B., 0-0-1-0; Stapleton, Davis B., 0-7-4-0; Steers, Roy L., 11-2-0-0; Steiger, Al, Jr., 0-7-0-2; Stephenson, Harry, 2-2-0-1; Stewart, Harry, 0-7-2-0; Stith, Bob, 15-18-3-0; Stokes, Joel L., Jr., 2-0-1-0; Strull, Asher, 21-24-6-1; Stumbo, Lloyd, 0-2-2-0; Sturgill, Barkley, Jr., 0-4-0-0; Sturgill, Bill, 19-11-0-0; Sullivan, Durwood, 0-2-0-0; Sumner, W. C., Jr., 0-6-8-1; Sumner, Willis A., 0-16-6-0; Susott, Wilfred, 3-0-0-0; Sutherland, Dr. G. L., 0-6-0-0; Sweeney, G. J., 1-1-1-0; Sweeney, Steve, 0-3-0-0; Sydnor, Buck, 0-4-0-0.

Tartar, H. D., 0-2-0-2; Taylor, C. E., 1-4-2-0; Taylor, Claydus, 2-0-0-0; Taylor, Edwin L., 4-7-5-2; Taylor, Jack, 6-4-0-3; Taylor, Robert S., 1-1-1-1; Taylor, William D., 0-1-0-0; Teague, Amos, 5-14-2-1; Tehan, Dan, 6-4-0-1; Terry, Bill, 0-0-3-0; Thompson, Bill, 0-7-1-1; Thompson, Jack, 60-24-6-1; Thompson, Ralph, 6-13-2-0; Thompson, H. William, 0-1-0-0; Thornsby, Dexter R., 6-7-3-2; Thrasher, Hugh R., 1-4-1-0; Thurman, J. W., 0-17-3-0; Tichenor, Matthew D., 2-3-0-0; Tierney, Francis J., 17-2-0-0; Tinch, Robert, 0-3-0-0; Tinnell, Cliff, 7-2-2-0; Tipton, Andrew K., 1-7-4-5; Torek, William Ernest, 0-0-2-0; Traud, Luke B., 0-0-2-0; Treas, Joe, 1-0-0-0; Trimble, Vensil Alvin, 0-1-1-0; Tucker, Harry, 5-5-4-0; Turner, A. J., 10-25-3-0; Turner, Eugene V., 8-10-1-2.

Underwood, John, 3-2-1-0; Usher, Lee, 20-8-1-2; Utley, William O., 0-1-1-0; Utley, William R., 1-0-1-0.

Vanhoose, Jack D., 0-8-8-1; Varble, William E., 6-5-8-0; Venn, Gilbert C., 9-8-1-0; Vettiner, Charlie, 3-0-0-0; Wagner, Geo. W., 0-2-4-5; Walker, Geo. E., 0-1-0-0; Ward, Edwin E., 1-12-0-1; Warf, Emerson C., 8-2-1-0; Warren, Bill, 0-1-0-0; Warren, Shelby P., 1-18-1-0; Warren, Bill, 0-1-0-0; Warren, Shelby P., 1-18-1-0; Watters, Richard W., 0-3-6-0; Weatherford, Jimmy, 3-5-3-0; Weaver, Vernon, 0-1-0-1; Welborn, Charles B., 0-0-1-2; Welch, Samuel Henry, 00-1-1; Weber, Edward H., 1-7-0-0; Wellman, Earl, 8-1-0-0; Wells, Milford, 0-5-0-0; Whelan, Willie, 7-1-3-0; Whiteker, Keevil, 0-0-2-0; Wiggins, George W., Jr., 2-7-1-0; Wilkins, Charles, 0-0-1-0; Wilkinson, F. D., 9-7-1-1; Williams, A. E., 0-0-1-0; Williams, John R., 0-0-1-0; Williams, Reid V., 0-0-1-0; Williams, Roy Eugene, 0-2-1-0; Williams, Thomas M., Jr., 22-15-5-0; Wilmhoff, Bert H., 0-0-1-0; Wilson, Jack R., 4-5-0-4; Wilson, Robert R., 0-14-2-0; Windsor, Joseph V., 14-5-4-1; Winfrey, Shelby, 1-6-1-0; Witschger, Leroy J., 5-6-0-1; Witten, Stoy G., 0-2-0-0; Wison, Thomas H., Jr., 0-0-1-0; Woodford, Ernest, 14-5-1-0; Wood, Elsworth, 0-0-1-1; Wood, George T., 0-1-1-0; Wood, Jimmy, 3-9-0-0; Woodward, Johnny, Jr., 6-10-2-1; Woods, Jack, 2-0-0-0; Wooton, James L., 3-0-5-0; Wright, Charles George H., 2-23-4-1; Wrightson, Arthur, 9-3-12-0; G., 0-0-0-1; Wright, Dudev V., 5-1-0-0; Wright, Wurtz, Emil, 0-2-0-0.

Yaggi, Bill, 8-14-1-1; Yancey, Charles, 0-3-0-1; Yessin, Humzey, 5-1-0-0; Young, Harold R., 0-1-3-0; Young, Roy, 0-3-1-2; Young, W. B., 8-3-9-1.

Zachem, Vincent, 16-5-6-1; Zachary, Alvin, 1-6-3-2.

Officials' Ratings On Sportsmanship Of K.H.S.A.A. Member Schools

FOOTBALL AND BASKETBALL, 1947-48

| | Coach | | | | Other School Officials | | | | Crowd | | | | Team | | | |
|-----------------------|-------|----|---|---|------------------------|----|---|---|-------|----|----|---|------|----|---|---|
| | E | G | F | P | E | G | F | P | E | G | F | P | E | G | F | P |
| Adairville | 13 | 4 | | | 13 | 4 | | | 7 | 7 | 3 | | 3 | 14 | 1 | |
| Allen County | 19 | 1 | | | 17 | 2 | | | 16 | 2 | 1 | | 15 | 4 | | |
| Almo | 29 | 4 | 1 | 1 | 27 | 5 | | 1 | 4 | 30 | | 1 | 31 | 3 | | 1 |
| Alvaton | 9 | 3 | | | 7 | 3 | 1 | | 9 | 3 | | | 9 | 3 | | |
| Anchorage | 50 | 9 | 7 | 1 | 51 | 11 | | | 43 | 16 | 4 | 4 | 45 | 14 | 7 | |
| Annville Institute | 11 | 7 | | | 14 | 2 | 1 | | 9 | 7 | 2 | | 13 | 4 | 1 | |
| Anton | 5 | 11 | 3 | 3 | 6 | 13 | | | 4 | 13 | 5 | | 6 | 10 | 4 | 2 |
| Arlington | 15 | 6 | 2 | 2 | 18 | 4 | 1 | | 10 | 9 | 5 | 1 | 17 | 6 | 2 | |
| Artemus | 5 | 3 | 1 | | 5 | 2 | | | 5 | 3 | 1 | | 4 | 4 | 1 | |
| Ashland | 35 | 3 | 2 | | 37 | 3 | 1 | | 28 | 11 | | 2 | 34 | 6 | 1 | |
| Athens | 15 | 5 | 1 | 1 | 15 | 5 | | | 13 | 6 | 2 | 1 | 15 | 5 | 1 | 1 |
| Auburn | 9 | 5 | 2 | | 9 | 2 | 1 | | 6 | 6 | 2 | 2 | 8 | 6 | 2 | |
| Augusta | 25 | 4 | 3 | | 25 | 3 | 2 | | 7 | 15 | 10 | | 20 | 12 | | |
| Augusta Tilghman | 48 | 7 | 2 | 2 | 45 | 4 | 4 | 2 | 40 | 9 | 6 | 4 | 42 | 13 | 2 | 1 |
| Austin-Tracy | 5 | 4 | 6 | 2 | 8 | 5 | 1 | 1 | 8 | 8 | | 1 | 8 | 1 | 1 | 1 |
| Auxier | 15 | 1 | 1 | 1 | 10 | 5 | 1 | | 12 | 2 | 3 | 2 | 12 | 4 | 1 | 2 |
| Bagdad | 16 | 4 | | | 17 | 3 | | | 14 | 5 | 1 | | 17 | 3 | | |
| Bald Knob | 20 | 5 | 1 | | 20 | 6 | | | 13 | 12 | 1 | | 14 | 11 | 1 | |
| Ballard County | 22 | 8 | 1 | | 20 | 9 | 2 | | 13 | 11 | 7 | | 16 | 12 | 3 | |
| Bandana | 19 | 9 | 3 | 1 | 21 | 9 | 2 | | 16 | 6 | 9 | 1 | 19 | 6 | 4 | 3 |
| Barbourville | 34 | 6 | | 1 | 29 | 10 | | | 22 | 17 | 2 | | 27 | 11 | 1 | |
| Bardstown | 40 | 1 | | | 37 | 3 | | | 27 | 11 | 2 | | 32 | 6 | 1 | |
| Bardwell | 24 | 5 | 1 | | 21 | 7 | | | 15 | 10 | 4 | 1 | 23 | 6 | | |
| Barlow-Kevil | 23 | 4 | | 1 | 22 | 5 | | 1 | 17 | 8 | 2 | 2 | 17 | 8 | 2 | 1 |
| Barret Manual Trg. | 54 | 5 | 1 | | 50 | 9 | | | 42 | 14 | 3 | | 47 | 9 | 4 | |
| Beaver Dam | 14 | 4 | 1 | 1 | 14 | 4 | 1 | | 6 | 8 | 4 | 1 | 10 | 6 | 2 | 1 |
| Beech Grove | 21 | 2 | 1 | | 19 | 3 | | | 16 | 4 | 4 | | 21 | 4 | | |
| Beechwood | 56 | 7 | | | 53 | 9 | | | 46 | 10 | 1 | | 50 | 11 | 1 | |
| Belfry | 38 | 13 | 1 | | 37 | 14 | 1 | | 32 | 16 | 4 | | 31 | 14 | 1 | 2 |
| Bell County | 32 | 5 | 2 | | 31 | 5 | 1 | | 27 | 8 | 1 | 2 | 28 | 7 | 3 | |
| Bellevue | 60 | 11 | | | 56 | 6 | | | 45 | 9 | 2 | | 58 | 12 | 1 | 2 |
| Benham | 36 | 6 | 3 | | 39 | 4 | | | 32 | 8 | 2 | 3 | 31 | 6 | 3 | 5 |
| Benton | 23 | 6 | | | 21 | 8 | | | 16 | 10 | 4 | | 16 | 13 | 2 | |
| Berea | 33 | 14 | | | 38 | 8 | 3 | | 29 | 17 | 2 | | 29 | 12 | 7 | |
| Berea Foundation | 6 | 7 | 2 | 1 | 10 | 6 | | | 2 | 11 | 2 | | 4 | 4 | 7 | 1 |
| Berry | 11 | 3 | 1 | | 11 | 2 | 1 | | 6 | 2 | 5 | 1 | 8 | 3 | 2 | 2 |
| Bethany | 12 | 2 | | 1 | 10 | 2 | | | 7 | 7 | | | 6 | 7 | 1 | |
| Bethel | 15 | 1 | 2 | | 15 | 2 | | | 11 | 2 | 3 | 1 | 12 | 2 | 2 | 1 |
| Betsy Layne | 22 | 2 | 1 | | 21 | 2 | 1 | | 18 | 7 | 1 | | 19 | 5 | 1 | 1 |
| Bevier-Cleaton | 7 | 5 | 1 | 1 | 7 | 3 | 2 | | 5 | 3 | 3 | 3 | 6 | 4 | 4 | |
| Black Star | 30 | 3 | | | 29 | 3 | | | 24 | 8 | 1 | | 31 | 2 | | |
| Baline | 14 | 1 | | | 8 | 1 | | | 14 | 1 | | | 10 | 5 | | |
| Blandville | 23 | 10 | 4 | 1 | 27 | 9 | 2 | | 16 | 13 | 8 | 1 | 16 | 12 | 8 | 1 |
| Bloomfield | 37 | | | | 36 | | | | 30 | 6 | | | 30 | 8 | | |
| Bowling Green | 37 | 10 | | | 49 | 3 | | | 30 | 17 | 1 | | 30 | 15 | 2 | |
| Bourbon County | 18 | 4 | 1 | | 16 | 6 | | | 16 | 5 | 2 | | 16 | 5 | 2 | |
| Boyd County | 15 | 10 | 4 | | 21 | 7 | 1 | | 14 | 14 | 1 | | 18 | 9 | 2 | |
| Bracken County | 26 | 5 | | 1 | 25 | 6 | 1 | | 23 | 9 | | | 27 | 4 | 1 | |
| Bradfordsville | 11 | 6 | 3 | | 9 | 9 | 3 | | 6 | 8 | 4 | | 11 | 5 | 2 | 1 |
| Breathitt | 10 | 1 | | | 7 | 3 | 1 | | 6 | 3 | 2 | | 9 | 2 | | |
| Breckinridge County | 43 | 5 | 3 | | 39 | 9 | 2 | | 30 | 15 | 5 | | 34 | 15 | 1 | |
| Breckinridge Training | 20 | 2 | 2 | 3 | 21 | 4 | | | 22 | 4 | | | 20 | 4 | 2 | |
| Breeding | 13 | 2 | | | 13 | 2 | | | 11 | 2 | 1 | | 13 | 2 | | |
| Bremen | 14 | 3 | 1 | | 14 | 5 | | | 9 | 8 | 1 | | 10 | 3 | 2 | 1 |
| Brewers | 36 | 6 | | | 37 | 5 | | | 33 | 7 | 1 | | 38 | 3 | | |
| Bridgeport | 16 | 5 | 2 | 1 | 15 | 5 | 2 | 2 | 9 | 10 | 5 | | 10 | 12 | 2 | |
| Bristow | 12 | 9 | 2 | 1 | 13 | 8 | | | 11 | 11 | 2 | | 10 | 9 | 3 | 2 |
| Brodhead | 21 | 2 | | | 17 | 5 | | | 12 | 7 | 2 | 1 | 18 | 5 | 1 | |
| Brownsville | 13 | 5 | | | 13 | 5 | | | 10 | 5 | 2 | 1 | 13 | 3 | 2 | |
| Buckeye | 15 | 2 | 1 | 1 | 16 | 2 | 1 | | 11 | 6 | 2 | | 12 | 5 | 2 | |
| Buena Vista | 13 | 4 | | | 12 | 4 | | | 10 | 3 | 3 | | 10 | 4 | 2 | |
| Buffalo | 11 | 11 | 1 | | 16 | 6 | | | 11 | 10 | 1 | | 14 | 8 | 1 | |
| Burgin | 27 | 4 | 1 | | 26 | 5 | | | 21 | 7 | 4 | | 23 | 8 | 1 | |
| Burkesville | 16 | 2 | | | 14 | 4 | | | 13 | 4 | 1 | | 13 | 2 | 3 | |
| Burlington | 18 | 9 | 2 | | 21 | 8 | | | 13 | 14 | 2 | | 15 | 12 | | |
| Burnside | 16 | 4 | 2 | 1 | 16 | 4 | 2 | | 8 | 12 | 1 | 1 | 10 | 6 | 5 | 1 |
| Bush | 16 | | 1 | | 15 | 2 | | | 10 | 6 | 2 | | 10 | 6 | 2 | |
| Butler | 17 | 4 | 4 | 1 | 20 | 5 | 1 | | 10 | 10 | 6 | | 12 | 6 | 7 | 1 |

| | Coach | | | | Other School Officials | | | | Crowd | | | | Team | | | |
|--------------------------|-------|----|---|---|------------------------|----|---|---|-------|----|----|---|------|----|----|---|
| | E | G | F | P | E | G | F | P | E | G | F | P | E | G | F | P |
| Butler (Princeton)----- | 30 | 7 | 1 | 4 | 36 | 1 | | | 30 | 6 | 2 | 1 | 27 | 3 | 7 | 1 |
| Calhoun----- | 22 | 4 | 1 | | 22 | 4 | 1 | | 17 | 7 | 3 | | 15 | 11 | 1 | |
| Calvert City----- | 26 | 2 | | | 23 | 4 | 1 | | 21 | 4 | 4 | | 21 | 7 | 1 | |
| Camargo----- | 5 | | 1 | | 3 | | 2 | | 3 | 3 | 1 | 1 | 3 | 2 | 3 | |
| Campbell County----- | 42 | 13 | 3 | 4 | 45 | 11 | 3 | 3 | 45 | 19 | 9 | 3 | 30 | 20 | 10 | 4 |
| Campbellsburg----- | 11 | 12 | 3 | 3 | 23 | 5 | | | 10 | 13 | 5 | | 17 | 12 | | |
| Campbellsville----- | 41 | 4 | 2 | | 31 | 17 | | | 16 | 27 | 3 | 2 | 30 | 11 | 6 | 1 |
| Camp Dick Robinson----- | 4 | 15 | 6 | 1 | 9 | 14 | 3 | | 5 | 13 | 8 | | 8 | 14 | 2 | 2 |
| Caneyville----- | 39 | 1 | 2 | | 38 | 5 | 3 | | 22 | 14 | 4 | 1 | 33 | 5 | 4 | |
| Cannel City----- | 11 | 5 | 9 | 1 | 10 | 6 | 7 | 1 | 8 | 7 | 8 | 1 | 8 | 5 | 11 | |
| Carlisle----- | 22 | 8 | 2 | 2 | 26 | 7 | | | 19 | 11 | 2 | 1 | 25 | 8 | 2 | |
| Carr Creek----- | 22 | 3 | | | 18 | 5 | | | 16 | 6 | 1 | | 22 | 2 | 1 | |
| Carrollton----- | 35 | 2 | | | 31 | 5 | 1 | | 24 | 12 | 1 | | 30 | 7 | | |
| Carter----- | 9 | 2 | | | 8 | 2 | | | 6 | 4 | | | 8 | 2 | | |
| Catlettsburg----- | 43 | 1 | | | 41 | 2 | | | 30 | 11 | 2 | | 32 | 11 | | |
| Cave City----- | 10 | 8 | | 3 | 15 | 7 | | | 11 | 8 | 1 | 2 | 12 | 8 | 2 | |
| Cayce----- | 21 | 9 | 2 | | 28 | 5 | | | 14 | 14 | 4 | | 15 | 9 | 6 | 3 |
| Center----- | 15 | 6 | | | 11 | 9 | | | 9 | 12 | | | 16 | 5 | | |
| Center Hill----- | 16 | 3 | 1 | | 16 | 3 | 1 | | 14 | 5 | 1 | | 12 | 4 | 4 | |
| Centertown----- | 16 | 5 | 1 | 1 | 13 | 7 | | | 12 | 6 | 4 | 1 | 14 | 6 | 2 | 1 |
| Central (Clinton)----- | 15 | 2 | 3 | | 17 | 2 | 1 | | 13 | 4 | 3 | | 15 | 2 | 2 | 1 |
| Central----- | 20 | 8 | 2 | | 18 | 7 | 3 | | 10 | 14 | 2 | 3 | 14 | 7 | 6 | 2 |
| Central City----- | 28 | 3 | 1 | 1 | 30 | 3 | | | 19 | 10 | 3 | | 25 | 7 | 1 | |
| Central Park----- | 22 | 5 | 1 | | 20 | 5 | 1 | | 18 | 9 | 1 | | 22 | 4 | 2 | |
| Chandler's Chapel----- | 10 | 3 | 3 | 2 | 13 | 1 | 1 | | 9 | 9 | | | 12 | 4 | 1 | 1 |
| Charleston----- | 15 | 2 | 1 | 3 | 15 | 6 | | | 15 | 4 | 1 | 1 | 14 | 6 | 1 | |
| Clark County----- | 27 | 1 | 1 | | 27 | 2 | | | 19 | 5 | 3 | | 24 | 3 | 2 | |
| Clarkson----- | 19 | 10 | 1 | 4 | 22 | 11 | 2 | | 22 | 11 | 3 | 1 | 23 | 12 | 2 | |
| Clay----- | 19 | 4 | | | 18 | 5 | | | 19 | 4 | | | 17 | 4 | 2 | |
| Clay County----- | 22 | 6 | | | 25 | 3 | | | 24 | 2 | 1 | 1 | 25 | 2 | 1 | |
| Clifty----- | 20 | 4 | 2 | | 19 | 5 | 2 | | 18 | 6 | 2 | | 18 | 6 | 2 | |
| Clinton County----- | 18 | 5 | 1 | 1 | 18 | 4 | 3 | | 15 | 4 | 4 | 2 | 16 | 4 | 4 | 1 |
| Clintonville----- | 13 | 5 | | | 12 | 6 | | | 12 | 4 | 2 | | 10 | 8 | | |
| College----- | 26 | 2 | | | 27 | 2 | | | 24 | 3 | 2 | | 25 | 4 | | |
| Columbia----- | 24 | 7 | 1 | | 21 | 10 | 1 | | 17 | 11 | 4 | | 22 | 9 | 1 | |
| Combs----- | 9 | 8 | 1 | | 8 | 7 | 2 | | 7 | 7 | 3 | 2 | 9 | 6 | 3 | |
| Connersville----- | 10 | 3 | | 1 | 10 | 2 | | | 8 | 3 | 2 | | 9 | 2 | 1 | 1 |
| Corbin----- | 48 | 2 | | 1 | 44 | 6 | 1 | | 40 | 6 | 4 | 1 | 43 | 9 | | |
| Corinth----- | 29 | 3 | 1 | | 28 | 4 | | | 20 | 11 | 1 | 1 | 28 | 4 | 1 | |
| Cornishville----- | 8 | 1 | | | 6 | 2 | 1 | | 5 | 2 | 1 | 1 | 5 | 3 | | 1 |
| Corydon----- | 22 | 4 | 5 | 1 | 25 | 3 | 2 | 1 | 10 | 10 | 2 | 3 | 17 | 7 | 1 | 7 |
| Covington Catholic----- | 20 | 3 | 1 | 2 | 21 | 4 | | 2 | 12 | 10 | 4 | 1 | 19 | 3 | 2 | 2 |
| Covington Latin----- | 6 | 2 | | | 5 | 3 | | | 5 | 2 | 1 | | 5 | 2 | 1 | |
| Crab Orchard----- | 15 | 8 | | | 17 | 4 | 2 | | 13 | 7 | 2 | 1 | 12 | 6 | 2 | 3 |
| Crestwood----- | 25 | 1 | | | 26 | | | | 22 | 4 | | | 24 | 2 | | |
| Crittenden----- | 18 | 6 | 2 | | 19 | 6 | 1 | | 10 | 11 | 5 | | 16 | 8 | 1 | 1 |
| Crofton----- | 24 | 4 | 3 | | 21 | 7 | 1 | | 20 | 9 | 1 | 1 | 22 | 6 | 3 | |
| Cromwell----- | 17 | 3 | | | 15 | 5 | | | 12 | 8 | | | 16 | 3 | 1 | |
| Cropper----- | 24 | 3 | 2 | | 24 | 5 | | | 17 | 11 | 1 | | 22 | 7 | | |
| Cuba----- | 30 | 10 | 3 | | 31 | 11 | 1 | | 26 | 15 | 1 | 1 | 25 | 13 | 5 | |
| Cub Run----- | 12 | 5 | | | 12 | 4 | | | 12 | 4 | 1 | | 14 | | 3 | |
| Cumberland----- | 33 | 3 | 1 | 1 | 30 | 4 | | | 23 | 9 | 3 | 3 | 27 | 9 | 2 | |
| Cumberland (Praise)----- | 37 | 6 | 2 | | 36 | 5 | 3 | | 26 | 10 | 6 | 3 | 33 | 10 | 4 | |
| Cunningham----- | 19 | 13 | 2 | | 18 | 15 | | | 18 | 10 | 5 | 1 | 21 | 10 | 3 | |
| Cynthiana----- | 29 | 7 | | | 30 | 5 | | | 22 | 14 | 1 | | 25 | 11 | | |
| Dalton----- | 3 | 4 | 1 | | 3 | 4 | 1 | | 3 | 4 | 1 | | 3 | 5 | | |
| Danville----- | 25 | 2 | 2 | | 30 | 3 | 1 | | 23 | 9 | 1 | | 25 | 7 | 2 | |
| Daviess County----- | 31 | 12 | | | 29 | 12 | | | 16 | 26 | 3 | | 23 | 15 | 2 | |
| Dawson Springs----- | 15 | 12 | | | 16 | 11 | | | 7 | 14 | 5 | 1 | 13 | 10 | 4 | |
| Dayton----- | 45 | 19 | 2 | 1 | 56 | 10 | | | 37 | 27 | 3 | 1 | 47 | 12 | | |
| Deming----- | 18 | 5 | 2 | | 17 | 3 | 1 | | 12 | 7 | 4 | 1 | 14 | 10 | | |
| Dixie Heights----- | 40 | 14 | 5 | | 50 | 9 | 1 | | 32 | 25 | 3 | | 44 | 16 | | |
| Dixon----- | 25 | 3 | | | 25 | 2 | 3 | | 20 | 10 | 2 | | 22 | 6 | 2 | |
| Dorton----- | 21 | 4 | | | 18 | 6 | | | 16 | 6 | 2 | | 18 | 5 | 1 | 1 |
| Dublin----- | 1 | | | | 1 | | | | 1 | | | | 1 | | | |
| Dunmor----- | 6 | 5 | | | 6 | 4 | | | 7 | 4 | | | 5 | 4 | 1 | 1 |
| Drakesboro----- | 16 | 5 | 4 | | 18 | 6 | | | 15 | 7 | 2 | 1 | 16 | 6 | 3 | |
| Dry Ridge----- | 21 | 7 | | | 21 | 6 | | | 12 | 14 | 2 | | 20 | 7 | 2 | |
| Dundee----- | 15 | 3 | 1 | 2 | 15 | 5 | 1 | | 12 | 2 | 4 | 3 | 14 | 3 | | 5 |
| DuPont Manual Trg----- | 59 | 7 | 1 | | 61 | 7 | 1 | | 43 | 15 | 10 | | 50 | 20 | | |
| Earlington----- | 13 | 8 | 1 | | 17 | 4 | | | 8 | 9 | 3 | 1 | 14 | 5 | 2 | |
| East Bernstadt----- | 9 | 1 | 1 | 1 | 8 | 1 | 2 | | 12 | 3 | 2 | 1 | 13 | 2 | 1 | 2 |
| Edmonton----- | 11 | 8 | 1 | 1 | 11 | 10 | | | 11 | 9 | 1 | | 12 | 7 | 2 | |

| | Coach | | | | Other School Officials | | | | Crowd | | | | Team | | | |
|----------------------------|-------|----|---|---|------------------------|----|---|---|-------|----|----|---|------|----|----|---|
| | E | G | F | P | E | G | F | P | E | G | F | P | E | G | F | P |
| Elizabethtown | 46 | 2 | 1 | | 45 | 4 | | | 28 | 16 | 2 | | 38 | 10 | 3 | |
| Elkhorn | 21 | 2 | | 1 | 20 | 4 | | 1 | 12 | 12 | | 1 | 16 | 4 | 4 | 1 |
| Eminence | 42 | 3 | 2 | | 40 | 2 | 4 | | 20 | 14 | 10 | 1 | 30 | 15 | 1 | |
| Estill County | 18 | 5 | 1 | 2 | 18 | 7 | 1 | | 14 | 11 | 1 | | 15 | 8 | 2 | 1 |
| Eubank | 12 | 7 | 5 | 3 | 13 | 7 | 4 | 1 | 8 | 14 | 4 | 1 | 11 | 10 | 3 | 2 |
| Evarts | 26 | 2 | 4 | | 31 | 3 | 1 | | 27 | 4 | 2 | 3 | 26 | 6 | 1 | 3 |
| Ezel | 5 | 3 | 2 | 1 | 5 | 4 | 2 | | 5 | 3 | 2 | 1 | 6 | 3 | 1 | 1 |
| Fairdale | 33 | 5 | 5 | | 31 | 9 | 1 | 1 | 27 | 14 | 1 | | 32 | 11 | | |
| Falmouth | 16 | 3 | 1 | | 14 | 7 | 1 | | 8 | 12 | 1 | | 12 | 10 | | |
| Farmington | 23 | 10 | 5 | | 25 | 11 | 1 | | 25 | 11 | 2 | | 25 | 10 | 4 | |
| Fancy Farm | 10 | 8 | | | 9 | 9 | | | 6 | 5 | 6 | 1 | 5 | 2 | 8 | 3 |
| Fed's Creek | 13 | 2 | | | 12 | 3 | | | 9 | 6 | 1 | | 12 | 3 | 1 | |
| Ferguson | 17 | 7 | 3 | 1 | 13 | 10 | 4 | | 12 | 9 | 2 | 4 | 12 | 12 | 4 | |
| Fern Creek | 35 | 10 | 1 | | 31 | 13 | | | 34 | 10 | 1 | | 31 | 12 | 2 | 1 |
| Finchville | 10 | 3 | | | 10 | 3 | | | 10 | 4 | 1 | | 10 | 4 | 1 | |
| First Creek | 15 | 7 | | | 16 | 3 | | | 13 | 8 | | | 14 | 7 | | |
| Flaget Memorial | 41 | 19 | 3 | | 54 | 9 | | | 42 | 15 | 7 | | 39 | 21 | 3 | |
| Flaherty | 22 | 5 | 1 | | 23 | 5 | | | 18 | 10 | | | 19 | 7 | 2 | |
| Flat Gap | 14 | 9 | 3 | 3 | 18 | 5 | 1 | 1 | 15 | 10 | 3 | | 11 | 13 | 4 | 2 |
| Fleming | 24 | 6 | | 3 | 23 | 6 | | 2 | 16 | 11 | 5 | | 23 | 5 | 3 | 1 |
| Fleming County | 11 | 3 | 4 | | 11 | 5 | 2 | | 9 | 4 | 5 | | 11 | 4 | 3 | |
| Florence | 26 | 7 | | 2 | 28 | 7 | | | 17 | 13 | 5 | | 19 | 14 | 2 | |
| Fordsville | 29 | 6 | 1 | | 18 | 14 | 3 | 1 | 11 | 17 | 7 | 1 | 16 | 15 | 5 | |
| Forkland | 20 | | | 1 | 18 | 3 | | | 14 | 7 | | | 16 | 3 | 1 | |
| Fort Knox | 36 | 2 | | | 38 | 2 | | | 26 | 15 | | | 34 | 6 | | |
| Fountain Run | 8 | 1 | 1 | | 7 | 1 | | | 7 | 2 | | | 6 | 3 | 1 | |
| Frances | 14 | 7 | | | 14 | 7 | | | 14 | 3 | 3 | 1 | 3 | 2 | 1 | |
| Frankfort | 37 | 17 | 2 | 1 | 44 | 10 | 2 | | 28 | 22 | 8 | 1 | 33 | 18 | 5 | |
| Franklin-Simpson | 31 | 5 | 5 | | 35 | 3 | 1 | | 26 | 9 | 3 | | 28 | 11 | 1 | |
| Frederick Fraize | 18 | 16 | 2 | | 22 | 15 | | | 16 | 18 | 2 | | 23 | 11 | 1 | |
| Fredericktown | | 1 | | | 1 | | | | | 1 | | | 1 | | | |
| Fredonia | 9 | 7 | 5 | 1 | 11 | 10 | | 1 | 7 | 7 | 5 | 4 | 11 | 3 | 5 | 4 |
| Frenchburg | 8 | 4 | 1 | 1 | 7 | 5 | 2 | | 7 | 2 | 4 | | 5 | 7 | | 1 |
| Fulgham | 23 | 6 | 4 | 1 | 20 | 13 | 1 | | 13 | 13 | 6 | 2 | 18 | 6 | 8 | 2 |
| Gallatin County | 27 | 11 | | 2 | 40 | 6 | 1 | 1 | 35 | 10 | 1 | 1 | 38 | 9 | 2 | 1 |
| Gamaliel | 12 | 7 | 9 | | 21 | 7 | | | 12 | 10 | 2 | 1 | 17 | 9 | 1 | 1 |
| Gulton | 21 | 4 | | | 14 | 10 | | | 10 | 13 | 2 | | 18 | 5 | 1 | 1 |
| Garth | 47 | 9 | 1 | 1 | 47 | 8 | 1 | | 38 | 21 | 1 | | 54 | 11 | 3 | |
| Garrett | 29 | 3 | 2 | | 17 | 2 | 1 | 1 | 16 | 11 | 4 | | 24 | 4 | 2 | 1 |
| Glasgow | 35 | 2 | 5 | 1 | 24 | 18 | 1 | | 17 | 21 | 4 | | 22 | 16 | 4 | 1 |
| Glendale | 33 | 7 | | | 28 | 7 | 1 | | 21 | 15 | 2 | | 31 | 6 | 1 | |
| Gleneyrie | 13 | | | | 13 | | | | 11 | 2 | | | 9 | 3 | 1 | |
| Good Shepherd | 21 | 7 | 1 | | 21 | 8 | | | 15 | 11 | 4 | | 18 | 9 | 2 | |
| Graham | 18 | 8 | | | 22 | 6 | | | 13 | 13 | 2 | | 15 | 14 | | |
| Great Crossing | 25 | 6 | 3 | | 25 | 5 | 1 | | 14 | 10 | 5 | 2 | 21 | 7 | 3 | |
| Greensburg | 23 | 4 | | | 22 | 6 | | | 20 | 9 | | | 19 | 10 | | |
| Greenup | 12 | 5 | 2 | | 11 | 7 | 1 | | 7 | 5 | 2 | 4 | 6 | 7 | 6 | |
| Greenville | 19 | 5 | | | 18 | 6 | | | 14 | 8 | 2 | | 17 | 7 | | |
| Guthrie | 31 | 2 | | 1 | 31 | 3 | 1 | | 28 | 4 | 1 | 1 | 34 | | 1 | |
| Haldeman | 5 | 1 | | | 4 | | 1 | | 5 | 1 | | | 5 | | 1 | |
| Hall | 44 | 5 | 2 | 1 | 47 | 2 | | | 43 | 8 | | 1 | 47 | | 1 | |
| Hanson | 18 | 10 | 2 | | 17 | 8 | | | 13 | 10 | 6 | 2 | 14 | 12 | 1 | 3 |
| Hardburly | 4 | 1 | 2 | 1 | 4 | 3 | 1 | | 4 | 3 | | | 5 | 1 | 2 | |
| Hardin | 29 | 9 | 2 | 3 | 31 | 7 | 2 | 2 | 12 | 19 | 6 | 6 | 27 | 12 | 4 | 1 |
| Harlan | 37 | 7 | 1 | 1 | 38 | 6 | 1 | | 33 | 9 | 3 | | 36 | 9 | | 2 |
| Harrodsburg | 32 | 9 | 3 | 1 | 34 | 7 | 3 | 1 | 25 | 12 | 4 | 4 | 25 | 14 | 1 | 3 |
| Hartford | 21 | 7 | 1 | | 24 | 4 | | | 18 | 8 | 2 | 1 | 18 | 9 | 2 | |
| Hawesville | 17 | 6 | 1 | | 17 | 5 | | | 13 | 5 | 1 | 5 | 12 | 9 | 3 | |
| Hazard | 52 | 8 | 4 | | 54 | 12 | 1 | | 50 | 16 | 3 | | 51 | 15 | | |
| Hazel | 31 | 1 | | 1 | 28 | 3 | | | 22 | 7 | 1 | 1 | 27 | 2 | 2 | 1 |
| Hazel Green | 19 | 1 | | | 18 | 2 | | | 15 | 4 | 1 | | 16 | 4 | | |
| Hazel Green (E. Bernstadt) | 7 | 3 | | | 6 | 4 | | | 7 | 2 | 1 | | 7 | 3 | | |
| Heath | 40 | 2 | | | 29 | 12 | | 1 | 24 | 10 | 5 | 1 | 40 | 6 | | |
| Hebbardsville | 19 | 11 | | | 20 | 9 | 1 | | 17 | 12 | 1 | 1 | 14 | 15 | | 1 |
| Hebron | 22 | 8 | 2 | | 24 | 5 | 1 | | 16 | 7 | 8 | | 24 | 5 | | |
| Hellier | 25 | 4 | 1 | 1 | 27 | 3 | | 1 | 16 | 8 | 4 | 3 | 18 | 8 | 4 | 1 |
| Henry Clay (Lexington) | 34 | 2 | | | 35 | 2 | | | 29 | 7 | | | 31 | 6 | 1 | |
| Henry Clay | 9 | 6 | | | 14 | 1 | | | 10 | 4 | 1 | | 9 | 4 | 2 | |
| Hickman | 34 | 12 | | 1 | 41 | 8 | | | 12 | 24 | 10 | 3 | 17 | 20 | 12 | 1 |
| Highland (Guerrant) | 18 | 5 | | | 18 | 4 | | | 11 | 9 | 3 | 1 | 11 | 11 | 1 | |
| Highland (Waynesburg) | 21 | 7 | | | 22 | 4 | | 1 | 18 | 10 | | 1 | 20 | 8 | 1 | |
| Highlands | 58 | 4 | 1 | | 59 | 3 | 1 | | 40 | 20 | 3 | 1 | 45 | 13 | 5 | |

| | Coach | | | | Other School Officials | | | | Crowd | | | | Team | | | |
|------------------------|-------|----|---|---|------------------------|----|---|---|-------|----|----|---|------|----|---|---|
| | E | G | F | P | E | G | F | P | E | G | F | P | E | G | F | P |
| Hindman | 14 | 1 | | | 14 | 1 | | | 13 | 1 | 1 | | 16 | | | |
| Hiseville | 10 | 11 | 2 | | 15 | 8 | | | 6 | 14 | 3 | | 11 | 4 | 7 | |
| Hitchins | 11 | 3 | 1 | | 13 | 2 | | | 6 | 11 | 3 | 1 | 14 | 6 | 1 | |
| Hodgenville | 20 | 6 | 1 | 1 | 20 | 5 | | | 16 | 12 | | | 20 | 8 | | |
| Holmes | 50 | 5 | | 1 | 57 | 9 | | | 35 | 22 | 8 | 1 | 46 | 19 | 3 | |
| Holy Cross (Covington) | 11 | 2 | | | 17 | 2 | | | 12 | 6 | 1 | | 11 | 7 | 1 | |
| Holy Cross | 5 | 5 | | 1 | 4 | 6 | 1 | | 1 | 4 | 5 | | 3 | 5 | 2 | 1 |
| Holy Family | 15 | 1 | 1 | 1 | 12 | 3 | 1 | | 11 | 4 | 2 | 1 | 12 | 3 | 2 | |
| Holy Name | 30 | 10 | | | 27 | 10 | | | 17 | 17 | 3 | 2 | 20 | 17 | 2 | |
| Hopkinsville | 4 | 14 | 5 | 1 | 14 | 7 | 2 | | 15 | 11 | 7 | | 34 | 17 | 2 | |
| Horse Branch | 16 | 1 | 3 | 2 | 16 | 3 | 2 | | 12 | 3 | 6 | 1 | 18 | 2 | 1 | 2 |
| Horse Cave | 18 | 5 | 1 | | 19 | 5 | | | 15 | 6 | 2 | | 14 | 10 | | |
| Howe Valley | 34 | | | | 27 | 1 | | | 24 | 10 | | | 30 | 3 | | |
| Hughes Kirkpatrick | 24 | 5 | 2 | | 24 | 8 | | | 19 | 10 | 2 | 1 | 23 | 6 | 3 | |
| Hustonville | 12 | 5 | 2 | | 13 | 5 | 1 | | 10 | 8 | 1 | | 11 | 6 | 2 | |
| Inez | 35 | 3 | 1 | 1 | 34 | 8 | | 1 | 26 | 12 | 1 | 2 | 27 | 11 | 1 | 2 |
| Irvine | 35 | 1 | 2 | | 32 | 3 | | | 26 | 10 | 4 | | 31 | 8 | 1 | |
| Irrington | 35 | 5 | | | 33 | 5 | | | 30 | 7 | 1 | | 32 | 6 | | |
| Jackson | 29 | 4 | 2 | | 25 | 9 | 1 | | 20 | 7 | 9 | | 29 | 5 | 2 | 1 |
| Jamestown | 8 | 8 | 2 | | 7 | 6 | 4 | | 3 | 8 | 5 | 1 | 5 | 5 | 6 | |
| Jeffersonton | 33 | 7 | 1 | 1 | 25 | 10 | 1 | | 21 | 17 | 2 | 1 | 28 | 13 | 1 | |
| Jenkins | 34 | 20 | 2 | | 32 | 18 | | 1 | 28 | 12 | 9 | 1 | 32 | 13 | 2 | 2 |
| John's Creek | 21 | 3 | 3 | | 21 | 4 | 1 | | 17 | 7 | 2 | 2 | 13 | 10 | 2 | |
| Junction City | 24 | 2 | | | 25 | | | | 15 | 9 | 1 | 1 | 21 | 9 | 1 | |
| Kavanaugh | 27 | 8 | | | 28 | 6 | | | 20 | 15 | 1 | | 24 | 11 | | |
| Kingston | 21 | 14 | 1 | 3 | 26 | 10 | 2 | | 15 | 19 | 4 | | 25 | 13 | 1 | |
| Kingdom Come | 9 | 4 | 1 | | 9 | 3 | | | 9 | 4 | 2 | | 9 | 4 | 2 | |
| Kirksey | 28 | 10 | | 1 | 28 | 5 | 1 | | 22 | 9 | 45 | 2 | 21 | 9 | 1 | 1 |
| Kirksville | 19 | 18 | 2 | 1 | 23 | 19 | | 2 | 19 | 20 | 1 | 2 | 22 | 19 | 2 | |
| Knott County | 6 | 1 | | | 2 | 5 | | | 2 | 3 | 1 | | 6 | | 1 | |
| Knox Central | 31 | 3 | 1 | | 28 | 5 | | | 15 | 11 | | | 25 | 8 | | 1 |
| Kyrock | 6 | 3 | | | 4 | 5 | 1 | | 3 | 6 | 1 | | 5 | 2 | 3 | |
| Lacy | 2 | 3 | 5 | 3 | 10 | 8 | | | 9 | 8 | 2 | | 10 | 5 | 4 | |
| Lafayette | 31 | 7 | 3 | 1 | 36 | 5 | 1 | | 24 | 12 | 3 | 1 | 32 | 8 | 2 | |
| LaGrange | 21 | 4 | 1 | | 21 | 3 | | | 15 | 11 | | | 16 | 10 | | |
| Lancaster | 20 | 5 | 2 | 2 | 20 | 4 | 1 | 2 | 12 | 13 | 1 | 2 | 16 | 6 | 6 | 2 |
| Lawrenceburg | 37 | 4 | | | 10 | 4 | | | 25 | 18 | 1 | | 30 | 7 | 6 | 1 |
| Lebanon | 21 | 7 | 4 | 2 | 25 | 9 | | | 17 | 13 | 4 | | 16 | 13 | 4 | |
| Lebanon Junction | 33 | 6 | 4 | 1 | 32 | 7 | 1 | 1 | 20 | 13 | 7 | 3 | 32 | 8 | 1 | 3 |
| Lee County | 22 | 7 | 3 | | 23 | 5 | 3 | | 17 | 10 | 5 | | 22 | 6 | 4 | |
| Leitchfield | 29 | 10 | | 1 | 28 | 11 | 2 | | 17 | 13 | 10 | 1 | 26 | 8 | 5 | 1 |
| Leslie County | 19 | | | | 18 | 1 | | | 17 | 3 | | | 17 | 3 | | |
| Lewisburg | 14 | 2 | | 1 | 16 | 1 | 1 | | 3 | 7 | 5 | 2 | 7 | 9 | 1 | |
| Lewis County | 12 | 4 | | 3 | 12 | 4 | | 3 | 8 | 6 | | 5 | 9 | 7 | | 3 |
| Lewisport | 11 | 13 | 9 | 8 | 27 | 11 | 1 | 1 | 18 | 13 | 6 | 5 | 17 | 15 | 5 | 5 |
| Lexington Latin | 23 | 9 | 1 | 1 | 25 | 7 | 7 | | 17 | 12 | 4 | | 19 | 7 | 6 | 1 |
| Liberty | 18 | 7 | 1 | | 15 | 10 | | | 7 | 12 | 5 | 1 | 11 | 13 | 2 | |
| Lily | 10 | 7 | 1 | | 9 | 9 | 1 | | 8 | 7 | 5 | | 7 | 10 | 1 | 1 |
| Livermore | 12 | 3 | 1 | | 13 | 1 | 1 | | 8 | 6 | 1 | 1 | 8 | 4 | 4 | |
| Livingston | 9 | 2 | 2 | 1 | 9 | 2 | 2 | 1 | 9 | 1 | 1 | 5 | 6 | 4 | 2 | 2 |
| Livingston County | 22 | 2 | 1 | 3 | 19 | 3 | 2 | 1 | 20 | 6 | | 2 | 17 | 2 | 1 | 3 |
| Lloyd Memorial | 44 | 14 | | 2 | 40 | 15 | 1 | 2 | 24 | 28 | 8 | 1 | 34 | 18 | 7 | 4 |
| London | 31 | | | | 28 | 3 | | | 25 | 6 | | | 26 | 5 | | |
| Lone Jack | 15 | 2 | 2 | | 16 | 2 | | | 16 | 2 | | | 14 | 5 | | |
| Lone Oak | 27 | 4 | | | 24 | 6 | 1 | | 20 | 9 | 2 | | 26 | 4 | 1 | |
| Lotts Creek | 4 | 1 | 3 | 1 | 3 | 4 | 2 | 1 | 1 | 5 | 2 | | 2 | 3 | 2 | 1 |
| Louisa | 30 | 6 | 4 | 1 | 28 | 10 | 2 | | 26 | 9 | 5 | 1 | 30 | 5 | 4 | 1 |
| Louisville Baptist | 7 | 1 | | 1 | 6 | 1 | 1 | | 6 | 2 | 1 | 1 | 6 | 3 | | 1 |
| Louisville Male | 51 | 11 | 3 | 2 | 47 | 14 | | 1 | 31 | 10 | 10 | 1 | 37 | 20 | 2 | |
| Loves | 24 | 6 | 2 | | 24 | 11 | | | 16 | 12 | 5 | 3 | 16 | 14 | 7 | |
| Loyall | 27 | 4 | 1 | 2 | 30 | 5 | | 1 | 21 | 8 | 2 | 6 | 20 | 8 | 3 | 5 |
| Ludlow | 47 | 24 | 1 | 1 | 53 | 17 | 1 | 1 | 34 | 28 | 8 | 4 | 39 | 25 | 4 | 3 |
| Lynch | 34 | 6 | 2 | | 35 | 2 | 2 | | 20 | 9 | 9 | 2 | 24 | 12 | 4 | |
| Lynn Camp | 25 | 7 | 6 | | 26 | 10 | | | 19 | 14 | 4 | | 24 | 10 | 3 | |
| Lynn Grove | 25 | 3 | 1 | | 25 | 3 | 1 | | 23 | 2 | 3 | 1 | 25 | 2 | 2 | |
| Lynnvale | 19 | 3 | 2 | 1 | 21 | 6 | | | 20 | 6 | | | 19 | 5 | | 2 |
| Lyon County | 15 | | | | 13 | 2 | | | 11 | 2 | 1 | 1 | 12 | 2 | 1 | |
| McAfee | 14 | 4 | | | 9 | 9 | | | 8 | 7 | 3 | | 8 | 8 | 2 | |
| McCreary County | 14 | 2 | | 1 | 11 | 3 | 1 | | 4 | 4 | 6 | 1 | 8 | 7 | 1 | 1 |
| McDowell | 23 | 1 | 1 | | 18 | 3 | 1 | | 18 | 4 | 2 | 1 | 18 | 5 | 2 | |
| McKee | 13 | 8 | 1 | 2 | 15 | 4 | 2 | | 13 | 4 | 5 | | 12 | 8 | 2 | 1 |
| McKell | 13 | 11 | 3 | 3 | 14 | 12 | 3 | 1 | 8 | 15 | 6 | 2 | 9 | 13 | 7 | 1 |

| | Coach | | | | Other School Officials | | | | Crowd | | | | Team | | | |
|----------------------|-------|----|---|---|------------------------|----|---|---|-------|----|---|---|------|----|---|---|
| | E | G | F | P | E | G | F | P | E | G | F | P | E | G | F | P |
| McKinney | 15 | 3 | 2 | 1 | 15 | 4 | 1 | | 15 | 4 | 2 | 1 | 17 | 2 | 5 | |
| Mackville | 15 | 2 | | | 14 | 3 | | | 10 | 6 | 1 | | 11 | 5 | 1 | |
| Madison | 33 | 5 | | | 32 | 6 | | | 27 | 9 | 2 | | 31 | 6 | | 1 |
| Madisonville | 41 | 6 | 2 | | 39 | 9 | | | 29 | 17 | 2 | 3 | 38 | 7 | 5 | |
| Magnolia | 20 | 2 | | | 20 | 1 | | | 12 | 10 | | | 20 | 2 | | |
| Marion | 31 | 7 | 1 | 3 | 38 | 4 | 2 | | 25 | 10 | 6 | 1 | 28 | 7 | 7 | |
| Martha Norris Mem. | 16 | 4 | | | 15 | 5 | | | 16 | 3 | 1 | | 17 | 3 | 1 | |
| Martin | 16 | 7 | 4 | 4 | 23 | 4 | | 1 | 19 | 4 | 3 | 4 | 14 | 8 | 6 | 3 |
| Mason | 7 | 1 | | | 6 | 2 | | | 5 | 4 | | | 5 | 4 | | |
| Mayfield | 26 | 13 | 6 | 4 | 37 | 10 | 1 | 1 | 25 | 12 | 5 | 7 | 25 | 17 | 5 | 1 |
| May's Lick | 28 | 8 | 1 | | 22 | 7 | | | 18 | 14 | 7 | | 24 | 14 | 1 | |
| Maysville | 30 | 1 | | | 28 | 2 | | | 23 | 4 | 2 | 1 | 25 | 5 | | |
| Maytown | 18 | 9 | 3 | | 16 | 2 | 2 | | 15 | 11 | 3 | 2 | 14 | 12 | 2 | 2 |
| Meade County | 25 | 9 | 2 | | 29 | 4 | 1 | | 18 | 14 | 3 | 1 | 28 | 9 | 1 | |
| Meade Memorial | 25 | 11 | 2 | | 29 | 6 | | | 19 | 15 | 3 | | 23 | 8 | 6 | |
| Melber | 22 | 5 | 3 | | 19 | 11 | 1 | | 16 | 13 | 1 | | 20 | 7 | 3 | |
| Memorial | 19 | 5 | | | 17 | 5 | | | 10 | 9 | 5 | | 13 | 9 | 2 | |
| Middleburg | 16 | 11 | 5 | | 7 | 16 | 9 | | 9 | 19 | 4 | | 9 | 18 | 6 | |
| Middlesboro | 30 | 4 | | | 32 | 3 | | | 24 | 10 | 1 | | 27 | 7 | 2 | |
| Midway | 18 | 3 | 1 | | 16 | 3 | 3 | | 10 | 9 | 2 | 1 | 10 | 6 | 4 | 1 |
| Milburn | 19 | 9 | 2 | 1 | 23 | 5 | 1 | | 20 | 8 | 2 | 1 | 22 | 4 | 4 | 1 |
| Millersburg Military | 30 | 2 | | | 29 | 2 | | | 24 | 5 | 2 | | 25 | 6 | 1 | |
| Milton | 21 | | 1 | | 22 | | | | 20 | 2 | 1 | | 18 | 3 | 2 | |
| Minerva | 25 | 8 | 2 | | 25 | 5 | 1 | 1 | 14 | 5 | 4 | | 20 | 13 | 1 | |
| Monticello | 15 | 10 | 3 | | 19 | 6 | 3 | | 10 | 10 | 5 | 2 | 10 | 14 | 3 | 1 |
| Morehead | 22 | 7 | | 1 | 24 | 6 | | | 19 | 10 | 1 | | 24 | 5 | | |
| Morgan | 17 | 2 | 1 | | 16 | 2 | | | 13 | 6 | | | 17 | 3 | | |
| Morgan County | 16 | 7 | 1 | 2 | 16 | 8 | 1 | | 14 | 9 | 2 | 1 | 9 | 10 | 5 | 1 |
| Morganfield | 36 | 6 | 5 | 4 | 45 | 5 | 1 | | 41 | 6 | 3 | 1 | 40 | 6 | 5 | |
| Morgantown | 10 | 8 | | | 10 | 8 | | | 9 | 5 | 4 | | 11 | 6 | | |
| Mortons Gap | 10 | 10 | 1 | | 12 | 8 | | | 7 | 8 | 7 | | 8 | 9 | 3 | 1 |
| Mt. Eden | 9 | 2 | | | 10 | 1 | | | 9 | 2 | | | 8 | 2 | 1 | |
| Mt. Sterling | 35 | 9 | 1 | 1 | 39 | 6 | 1 | | 33 | 11 | 1 | 1 | 33 | 10 | 1 | |
| Mt. Vernon | 20 | 4 | 1 | | 19 | 5 | | 2 | 15 | 6 | 2 | 2 | 20 | 1 | 1 | 2 |
| Mt. Victory | 7 | 5 | | | 5 | 6 | 1 | | 4 | 3 | 5 | | 6 | 5 | 1 | |
| Mt. Washington | 22 | 5 | | | 22 | 5 | | | 12 | 13 | 2 | | 20 | 7 | | |
| Munfordville | 22 | 2 | 1 | | 23 | 3 | | | 13 | 12 | | | 19 | 6 | | |
| Murray | 47 | 9 | | | 52 | 6 | | | 51 | 5 | 2 | 1 | 47 | 8 | | 1 |
| Murray Training | 15 | 1 | 1 | | 12 | 2 | | | 13 | 2 | 2 | | 14 | | 2 | |
| Nancy | 7 | 7 | 5 | 2 | 4 | 10 | 4 | | 4 | 9 | 4 | 3 | 6 | 7 | 5 | 2 |
| Nebo | 14 | 9 | | | 8 | 12 | | | 3 | 14 | 5 | | 7 | 10 | 1 | 5 |
| New Castle | 25 | 7 | 3 | 1 | 25 | 6 | 1 | | 13 | 14 | 5 | 3 | 18 | 12 | 4 | 2 |
| New Concord | 14 | 12 | 1 | | 13 | 13 | | | 12 | 13 | 2 | | 14 | 10 | 3 | |
| New Haven | 20 | 2 | 5 | 1 | 22 | 3 | 2 | | 15 | 5 | 5 | 3 | 20 | 4 | 4 | |
| New Liberty | 20 | 1 | | | 21 | | | | 17 | 4 | | | 20 | 1 | | |
| Newport | 46 | 9 | 4 | 3 | 50 | 9 | | 1 | 38 | 18 | 4 | | 48 | 13 | 2 | |
| Newport Catholic | 46 | 2 | | 1 | 40 | 9 | | | 30 | 18 | | 1 | 39 | 9 | 3 | |
| Nicholas County | 16 | 6 | 1 | 1 | 19 | 4 | | 1 | 19 | 4 | | 1 | 17 | 3 | 3 | 1 |
| Nicholasville | 36 | 11 | 1 | | 40 | 9 | | | 30 | 18 | | | 33 | 14 | 2 | |
| North Middletown | 22 | 3 | | | 21 | 3 | | 1 | 20 | 5 | | | 18 | 4 | 2 | |
| North Warren | 12 | 2 | | | 10 | 4 | | | 7 | 6 | 1 | | 9 | 6 | | |
| Nortonville | 22 | 2 | | | 24 | 1 | | | 17 | 6 | 1 | 1 | 22 | 3 | | |
| Oddville | 9 | 9 | | | 7 | 8 | 2 | | 5 | 9 | 3 | | 5 | 9 | 3 | |
| Oil Springs | 24 | 12 | 5 | | 29 | 7 | 4 | | 25 | 7 | 8 | | 21 | 11 | 8 | |
| Okalona | 41 | 9 | | 2 | 37 | 11 | | | 30 | 18 | 2 | 1 | 35 | 14 | 1 | 1 |
| Old Kentucky Home | 20 | 3 | | | 20 | 2 | 1 | | 17 | 5 | | 1 | 21 | 2 | 1 | |
| Olive Hill | 35 | 3 | | | 32 | 4 | | | 25 | 8 | 4 | | 33 | 4 | 1 | |
| Olmstead | 8 | 4 | | | 8 | 4 | | | 4 | 6 | 2 | | 5 | 7 | | |
| Oneida Institute | 10 | 6 | 1 | | 14 | 3 | | | 9 | 3 | 5 | | 11 | 3 | 1 | 2 |
| Onton | 31 | 5 | 1 | | 30 | 5 | | | 26 | 5 | 5 | 1 | 26 | 8 | 2 | |
| Orangeburg | 16 | 12 | | | 8 | 15 | | | 11 | 9 | 6 | 1 | 16 | 11 | 1 | |
| Ormsby Village | 14 | 1 | | | 12 | | | | 14 | 1 | | | 11 | 2 | 2 | |
| Owensboro | 49 | 12 | | | 46 | 13 | | | 37 | 22 | 4 | | 40 | 17 | 1 | 1 |
| Owensboro Technical | 7 | 16 | 6 | 2 | 12 | 20 | | | 11 | 13 | 8 | 2 | 11 | 18 | 3 | 1 |
| Owenton | 34 | 1 | 1 | | 33 | 2 | | | 28 | 6 | 1 | 1 | 30 | 4 | 1 | 1 |
| Owsley County | 17 | 4 | 4 | 2 | 23 | 2 | 1 | 1 | 17 | 5 | 2 | 3 | 16 | 11 | | 1 |
| Owingsville | 11 | 3 | | | 11 | 3 | 1 | | 10 | 4 | 1 | | 13 | 2 | | |
| Oxford | 12 | 7 | 3 | | 11 | 6 | 3 | | 9 | 7 | 4 | | 8 | 8 | 4 | |
| Paint Lick | 20 | 3 | | | 17 | 4 | | | 17 | 4 | 2 | | 16 | 5 | 1 | |
| Paintsville | 40 | 11 | 4 | | 39 | 10 | 5 | | 32 | 14 | 6 | 2 | 32 | 18 | 7 | |
| Paris | 32 | 8 | 1 | | 34 | 6 | 1 | 1 | 23 | 10 | 4 | 4 | 28 | 13 | 1 | |
| Park City | 7 | 6 | 1 | | 10 | 3 | | | 6 | 8 | | | 8 | 6 | | |

| | Coach | | | | Other School Officials | | | | Crowd | | | | Team | | | |
|--------------------------|-------|----|---|---|------------------------|----|---|---|-------|----|----|---|------|----|---|---|
| | E | G | F | P | E | G | F | P | E | G | F | P | E | G | F | P |
| Parksville | 29 | 4 | | | 23 | 4 | | | 15 | 10 | 2 | | 17 | 10 | | 1 |
| Peaks Mill | 17 | 3 | 1 | 1 | 15 | 5 | | 1 | 10 | 8 | 4 | | 11 | 8 | 3 | 1 |
| Pembroke | 11 | 5 | 4 | 1 | 14 | 4 | 2 | | 10 | 8 | 3 | | 11 | 6 | 4 | |
| Perryville | 28 | 3 | | | 27 | 3 | | | 19 | 10 | | | 19 | 11 | 1 | |
| Phelps | 11 | | 1 | | 11 | | | | 10 | 1 | 1 | | 10 | 1 | 1 | |
| Pikeville | 29 | 13 | 5 | | 34 | 7 | 5 | | 19 | 13 | 8 | 4 | 26 | 14 | 6 | |
| Pikeville College | 31 | 1 | 1 | | 34 | | | | 25 | 3 | 1 | 1 | 30 | 4 | | |
| Pine Knot | 15 | 3 | | | 16 | 2 | | | 2 | 7 | 10 | | 8 | 7 | 3 | |
| Pineville | 38 | 6 | 1 | | 36 | 5 | 1 | | 32 | 10 | | | 30 | 11 | 1 | |
| Pleasant View | 15 | 2 | 1 | | 16 | 2 | | | 10 | 5 | 2 | | 16 | 2 | | |
| Pleasureville | 13 | 3 | 2 | 1 | 13 | 5 | | | 8 | 5 | 5 | 1 | 11 | 8 | 1 | |
| Poole | 14 | 3 | | 1 | 14 | 4 | | | 10 | 7 | 1 | | 12 | 4 | 2 | |
| Poplar Creek | 8 | 1 | | 1 | 9 | | | | 6 | 2 | 1 | | 8 | | | 1 |
| Powell County | 15 | 2 | | | 13 | 3 | | | 14 | 2 | 1 | | 15 | 2 | | 1 |
| Portland Christian | 8 | 1 | | 1 | 7 | 2 | | | 7 | 2 | | 1 | 6 | 3 | | 1 |
| Prestonsburg & Floyd Co. | 41 | 10 | 5 | 2 | 36 | 15 | 3 | 2 | 29 | 17 | 6 | 6 | 29 | 21 | 5 | 2 |
| Prichard | 14 | 3 | 2 | | 11 | 4 | 1 | | 10 | 3 | 5 | | 10 | 7 | 1 | |
| Providence | 32 | 4 | 1 | | 32 | 4 | | | 29 | 7 | | 1 | 29 | 5 | 3 | |
| Pruden | 8 | | 2 | | 10 | | | | 7 | 3 | | | 7 | 3 | | |
| Raceland | 27 | 11 | 1 | | 28 | 12 | | | 15 | 14 | 9 | 1 | 20 | 17 | 2 | |
| Reidland | 20 | 8 | 3 | | 26 | 3 | 1 | | 20 | 9 | 1 | 2 | 23 | 8 | | |
| Renaker | 8 | 1 | | | 7 | 1 | | | 6 | 2 | | | 7 | 1 | | |
| Richardsville | 3 | 7 | | | 5 | 3 | | 1 | 2 | 6 | 2 | | 3 | 5 | 2 | |
| Rineyville | 36 | 3 | 2 | 2 | 31 | 5 | 1 | 1 | 27 | 10 | 2 | 3 | 33 | 5 | 2 | 2 |
| Riverside Institute | 6 | | | | 6 | | | | 5 | 2 | | | 3 | 4 | | |
| Robinson | 15 | 5 | 1 | | 14 | 2 | 2 | | 13 | 5 | 2 | | 10 | 9 | 2 | |
| Rochester | 9 | 5 | 2 | | 11 | 5 | | | 6 | 4 | 1 | 5 | 10 | 3 | 2 | 1 |
| Rockhold | 8 | 3 | | | 9 | 1 | 1 | | 5 | 4 | 1 | 1 | 8 | 1 | 2 | |
| Rockport | 15 | 3 | 1 | | 16 | 2 | 1 | | 11 | 3 | 4 | 1 | 11 | 6 | 2 | |
| Rose Hill | 3 | 1 | | 2 | 3 | 2 | 1 | | 1 | 2 | 3 | | 4 | 2 | | |
| Royalton | 3 | 2 | 2 | | 2 | 4 | 1 | | 2 | 4 | 1 | | 2 | 5 | | |
| Rugby University | 5 | 6 | | | 5 | 3 | 1 | | 5 | 5 | 1 | | 6 | 6 | 2 | |
| Russell | 32 | 10 | 2 | 1 | 33 | 9 | 1 | 1 | 9 | 27 | 5 | 5 | 23 | 13 | 5 | 4 |
| Russell Springs | 4 | 11 | 1 | 1 | 7 | 8 | 1 | 1 | 5 | 10 | 2 | | 7 | 6 | 4 | |
| Russellville | 37 | 8 | 2 | | 44 | 3 | 1 | | 37 | 9 | 2 | | 42 | 7 | 1 | |
| St. Augustine | 15 | 9 | | | 13 | 11 | | | 11 | 8 | 3 | 2 | 11 | 11 | 1 | |
| St. Camillus | 1 | | 2 | | 1 | | | | 1 | | 2 | | 1 | | 1 | 1 |
| St. Charles | 6 | 2 | 1 | | 6 | 2 | 1 | | 5 | 3 | 1 | | 7 | 2 | | |
| St. Frances (Owensboro) | 17 | 7 | 1 | | 14 | 7 | 2 | | 10 | 10 | 4 | 1 | 11 | 11 | 3 | |
| St. Francis | 4 | | | | 3 | | | | 1 | 3 | 1 | | 3 | 2 | | |
| St. Henry | 26 | 9 | 1 | | 21 | 11 | 4 | 1 | 18 | 15 | 2 | 1 | 20 | 13 | 1 | |
| St. Joseph (Owensboro) | 36 | 5 | | | 32 | 9 | | | 21 | 15 | 5 | 1 | 26 | 10 | 3 | 3 |
| St. Joseph (Bardstown) | 48 | 10 | | | 49 | 9 | | | 34 | 15 | 7 | | 44 | 13 | 2 | |
| St. James | 9 | 5 | 1 | | 7 | 7 | | | 3 | 11 | 1 | | 4 | 11 | | |
| St. Mary | 26 | 16 | 2 | | 33 | 8 | 2 | | 18 | 23 | 8 | | 17 | 24 | 5 | 1 |
| St. Patrick | 24 | 3 | | 1 | 19 | 5 | | | 16 | 8 | 3 | | 27 | 2 | | |
| St. Xavier | 46 | 20 | 4 | | 54 | 10 | 1 | | 34 | 16 | 14 | | 42 | 19 | 3 | |
| Sacramento | 17 | 1 | | | 11 | 3 | 2 | 1 | 9 | 9 | 2 | | 12 | 5 | 1 | |
| Sadieville | 7 | 7 | 1 | 1 | 7 | 5 | 3 | | 4 | 8 | 3 | | 7 | 8 | | |
| Salem | 13 | 4 | 3 | 2 | 13 | 6 | 2 | 1 | 14 | 4 | 3 | 1 | 14 | 3 | 2 | 3 |
| Salt Lick | 17 | 3 | | | 16 | 2 | | | 14 | 2 | 3 | 1 | 17 | 2 | 1 | |
| Salvisa | 14 | 2 | | | 11 | 3 | | | 5 | 6 | 3 | 2 | 10 | 5 | 1 | |
| Salyersville | 19 | 14 | 6 | 4 | 23 | 12 | 4 | 2 | 12 | 11 | 11 | 8 | 18 | 12 | 6 | 5 |
| Sandy Hook | 10 | 7 | 3 | | 11 | 5 | 3 | | 8 | 7 | 4 | 1 | 8 | 8 | 3 | |
| Science Hill | 13 | 6 | 3 | | 13 | 5 | 2 | | 5 | 10 | 5 | 1 | 7 | 10 | 5 | |
| Scottsville | 23 | 3 | 4 | | 22 | 4 | | 2 | 20 | 5 | 5 | | 24 | 5 | 1 | |
| Sebree | 32 | 3 | | | 26 | 7 | | | 20 | 8 | 6 | | 25 | 7 | 2 | |
| Sedalia | 31 | 5 | | | 23 | 13 | | | 20 | 15 | | 1 | 23 | 13 | | |
| Shady Grove-Mattoon | 8 | 3 | | | 5 | 4 | 2 | | 4 | 3 | 4 | | 2 | 6 | 3 | |
| Sharpe | 31 | 6 | | | 27 | 11 | | | 21 | 12 | 2 | 2 | 24 | 13 | | |
| Sharpsburg | 20 | 4 | 1 | | 22 | 2 | 1 | | 20 | 4 | 1 | | 22 | 4 | | |
| Shelbyville | 47 | 13 | | | 52 | 8 | | | 37 | 21 | 4 | | 39 | 20 | 2 | 1 |
| Shepherdsville | 17 | 17 | 1 | | 27 | 6 | 2 | | 9 | 23 | 3 | | 11 | 23 | 1 | |
| Shopville | 8 | 1 | 2 | | 7 | 3 | 2 | | 4 | 4 | 3 | 1 | 5 | 5 | 1 | 1 |
| Silver Grove | 28 | 5 | 2 | | 30 | 3 | 1 | | 19 | 12 | 4 | | 22 | 11 | 2 | |
| Simon Kenton | 28 | 9 | 1 | 2 | 33 | 6 | | | 19 | 17 | 2 | | 24 | 12 | 3 | |
| Simpsonville | 11 | 3 | 1 | | 12 | 2 | | | 11 | 4 | | | 7 | 7 | 1 | |
| Sinking Fork | 17 | | | | 17 | | | | 13 | 4 | | | 17 | | | |
| Slaughters | 13 | 7 | 1 | 1 | 12 | 7 | | | 10 | 5 | 6 | 1 | 10 | 6 | 5 | 1 |
| Somerset | 40 | 5 | 2 | | 38 | 7 | | | 32 | 8 | 4 | 3 | 33 | 10 | 3 | 1 |
| Sonora | 31 | 5 | 1 | | 30 | 4 | | | 22 | 15 | 1 | | 30 | 8 | | |
| South Christian | 20 | 3 | | | 22 | 1 | | | 12 | 8 | 1 | 1 | 17 | 4 | | |

| | Coach | | | | Other School Officials | | | | Crowd | | | | Team | | | |
|---------------------|-------|----|---|---|------------------------|----|---|---|-------|----|----|---|------|----|---|---|
| | E | G | F | P | E | G | F | P | E | G | F | P | E | G | F | P |
| South Portsmouth | 24 | 8 | | | 25 | 5 | 1 | | 9 | 20 | 2 | 1 | 22 | 7 | 2 | |
| South Warren | 10 | 4 | | | 9 | 4 | | | 5 | 7 | 2 | 1 | 10 | 3 | | 1 |
| Springfield | 34 | 2 | 3 | | 31 | 7 | | | 26 | 10 | 2 | 1 | 29 | 10 | | |
| Spottsville | 13 | 10 | | | 12 | 10 | | | 11 | 10 | 2 | 1 | 7 | 13 | 2 | |
| Stamping Ground | 11 | 15 | 5 | 5 | 19 | 15 | 1 | | 12 | 11 | 9 | 3 | 19 | 16 | 1 | 1 |
| Stanford | 32 | 6 | 1 | | 31 | 6 | | | 20 | 9 | 8 | 1 | 20 | 14 | 3 | |
| Stearns | 26 | 2 | | | 17 | 6 | 1 | | 13 | 10 | 4 | | 13 | 11 | 4 | |
| Stinnett Settlement | 2 | 1 | | | 1 | | 1 | | 2 | | 1 | | 2 | | 1 | |
| Stuart Robinson | 12 | 1 | 1 | | 13 | | | | 5 | 9 | | | 8 | 5 | 1 | |
| Sturgis | 43 | 3 | 1 | 1 | 40 | 5 | 2 | 1 | 39 | 5 | 3 | 1 | 38 | 5 | 4 | 5 |
| Sulphur | 22 | 8 | 1 | | 19 | 7 | | | 15 | 14 | 3 | | 21 | 8 | 1 | |
| Summer Shade | 9 | 7 | 7 | 1 | 9 | 5 | 6 | 1 | 7 | 12 | 3 | 2 | 8 | 7 | 4 | 5 |
| Sunfish | 11 | 8 | | 1 | 9 | 9 | | | 9 | 9 | | 2 | 11 | 7 | | 2 |
| Symsonia | 20 | 6 | | | 19 | 6 | | | 16 | 11 | | | 13 | 7 | 1 | |
| Taylor County | 22 | 6 | | | 14 | 13 | | | 10 | 11 | 7 | | 14 | 11 | 3 | |
| Taylorville | 17 | 2 | | | 17 | 2 | | | 14 | 3 | 1 | | 14 | 4 | 1 | |
| Temple Hill | 7 | 6 | 4 | 1 | 11 | 6 | | | 8 | 9 | 1 | | 10 | 7 | 1 | |
| Todd County | 13 | 8 | 2 | | 14 | 5 | 2 | | 2 | 8 | 7 | 6 | 10 | 11 | 1 | 1 |
| Tollesboro | 16 | 8 | 1 | 1 | 10 | 9 | 1 | 1 | 10 | 15 | 1 | | 18 | 6 | 1 | 1 |
| Tolu | 6 | 1 | | | 3 | 4 | | | 3 | 3 | 1 | | 3 | 4 | | |
| Tompkinsville | 43 | 10 | 1 | | 32 | 21 | 1 | 1 | 19 | 23 | 11 | 2 | 36 | 16 | 3 | |
| Trenton | 18 | 4 | 1 | | 20 | 2 | 1 | | 19 | 2 | 2 | | 20 | 2 | 1 | |
| Trigg County | 33 | 2 | | | 34 | 2 | | | 28 | 9 | | | 30 | 8 | | |
| Trimble County | 12 | 10 | 3 | | 17 | 6 | 3 | | 14 | 6 | 3 | 2 | 11 | 10 | 2 | 2 |
| Tyner | 8 | 3 | 1 | | 9 | 3 | | | 7 | 4 | 1 | | 10 | 1 | 1 | |
| Uniontown | 9 | 3 | | | 9 | 3 | | | 9 | 3 | 1 | | 7 | 4 | 2 | |
| University | 23 | | 1 | | 22 | 3 | | | 22 | 4 | | | 22 | 3 | | |
| Utica | 15 | 12 | 7 | | 20 | 10 | 1 | | 11 | 16 | 2 | 5 | 14 | 18 | 2 | |
| Valley | 40 | 24 | 1 | 1 | 45 | 17 | | | 21 | 35 | 9 | 4 | 31 | 29 | 8 | 1 |
| Van Lear | 17 | 11 | 5 | 1 | 21 | 10 | 1 | 1 | 16 | 13 | 2 | 3 | 16 | 12 | 5 | 1 |
| Versailles | 33 | 8 | 4 | 1 | 34 | 9 | | | 18 | 22 | 6 | | 35 | 10 | 1 | |
| Vicco | 10 | 11 | | 1 | 18 | 1 | | 1 | 13 | 7 | 1 | | 18 | 10 | 1 | |
| Vine Grove | 31 | 7 | 2 | | 31 | 4 | | | 23 | 17 | | | 36 | 3 | | |
| Viper | 16 | 8 | | | 15 | 3 | | | 11 | 9 | 1 | 2 | 14 | 10 | | |
| Virgie | 26 | 6 | 1 | 1 | 29 | 4 | 1 | | 21 | 8 | 2 | 3 | 22 | 5 | 6 | 1 |
| Waco | 27 | 5 | | | 22 | 10 | | 1 | 16 | 14 | 1 | | 22 | 7 | 2 | |
| Waddy | 25 | 1 | | | 25 | 1 | | 1 | 15 | 9 | | | 18 | 8 | | |
| Wallins | 32 | 3 | 1 | 1 | 32 | 2 | | | 25 | 9 | | 2 | 32 | 2 | 2 | |
| Walton-Verona | 31 | 7 | 1 | | 31 | 7 | | | 16 | 12 | 11 | | 21 | 13 | | |
| Warfield | 17 | 3 | 3 | | 15 | 5 | 2 | | 11 | 7 | 3 | 2 | 7 | 10 | 5 | 1 |
| Wayland | 22 | 6 | 5 | | 21 | 4 | | | 20 | 8 | 5 | | 22 | 9 | 1 | 1 |
| Wayne County | 5 | 13 | 2 | | 13 | 5 | 1 | | 6 | 13 | 2 | | 8 | 8 | 5 | |
| Waynesburg | 9 | 4 | 2 | | 9 | 4 | 2 | | 3 | 7 | 5 | | 6 | 7 | 1 | 1 |
| Webbville | 13 | 7 | 1 | | 14 | 4 | 1 | | 9 | 11 | | | 11 | 6 | 4 | |
| Western (Hickman) | 18 | 1 | | 2 | 19 | 2 | 1 | | 13 | 5 | 3 | 1 | 13 | 5 | 1 | 3 |
| Western (Sinai) | 30 | | 1 | | 30 | 1 | | | 14 | 17 | | | 24 | 8 | | |
| West Louisville | 17 | 8 | 2 | 2 | 19 | 8 | 1 | | 14 | 4 | 1 | | 14 | 11 | 4 | |
| West Point | 22 | 5 | | | 20 | 7 | | | 7 | 17 | 2 | 1 | 15 | 9 | 2 | 1 |
| Wheatcroft | 25 | 2 | | | 19 | 4 | 3 | | 14 | 3 | 5 | 4 | 14 | 10 | 2 | 1 |
| Wheelwright | 24 | 1 | 2 | | 24 | 1 | 2 | | 23 | 7 | 2 | | 22 | 4 | 1 | |
| Whitesburg | 32 | 7 | 1 | | 32 | 5 | 1 | | 30 | 7 | 3 | | 27 | 9 | 3 | 1 |
| Whitesville | 16 | 19 | 4 | 3 | 25 | 14 | 1 | | 21 | 14 | 7 | 1 | 20 | 14 | 4 | 2 |
| Wickliffe | 32 | 3 | 3 | | 21 | 9 | 2 | 1 | 19 | 14 | 4 | | 23 | 13 | 2 | |
| Williamsburg | 27 | 15 | 3 | 2 | 34 | 7 | | | 24 | 15 | 7 | 1 | 27 | 15 | 4 | 2 |
| Williamstown | 16 | 7 | 2 | | 17 | 6 | 1 | | 10 | 10 | 1 | 3 | 13 | 9 | 1 | 1 |
| Willisburg | 10 | 4 | | | 9 | 4 | | | 7 | 5 | 2 | | 8 | 4 | 2 | |
| Wilmore | 8 | 11 | 1 | | 14 | 6 | | | 9 | 9 | 2 | 1 | 9 | 10 | | 1 |
| Winchester | 47 | 1 | | | 44 | 2 | 1 | | 40 | 6 | 2 | | 42 | 2 | | |
| Wingo | 13 | 5 | 2 | | 16 | 4 | | | 8 | 11 | 1 | | 13 | 6 | 1 | |
| Witherspoon College | 7 | 3 | | | 5 | | | | 7 | 3 | | | 5 | 5 | | |
| Wolfe County | 13 | 4 | 1 | | 12 | 2 | 3 | | 10 | 5 | 2 | 1 | 12 | 3 | 3 | |
| Woodbine | 15 | | 2 | | 15 | 1 | | | 10 | 6 | 1 | | 11 | 3 | 3 | |
| Wurtland | 11 | 2 | | 2 | 12 | 1 | 1 | | 5 | 7 | 1 | 2 | 11 | 1 | 1 | 2 |

FROM THE COMMISSIONER'S OFFICE
(Continued from Page Two)

Principals who are interested in insuring their players or students taking courses in Health or Physical Education should write for examination cards and summary sheets at once. As was true last year, after the examination is made the cards may be filed

in the principal's office and only the summary sheet, listing the students which are to be insured, is sent to the State Office. It is not necessary to send an examination card to the office of the Protection Fund except as support of a claim. This simplified plan of insuring students was very popular with school men in 1947-48.

(Continued on Page Nineteen)

REPORT ON THE SUMMER MEETING

(Continued from Page One)

satisfying to find that Kentucky is up among the top states as far as its insurance program is concerned. I should like to inject one thought at this point by reminding you fellows that the matter of getting your boys examined by a doctor, which is probably one of your pet peeves, is actually one of the most important phases of the insurance plan. This gives a very necessary degree of protection in that it may prevent boys from practicing in athletics who are physically unsound. It was interesting also to note that a few states cover bruises, burns, sprains and similar injuries, but generally speaking the premiums in such states are higher than those in Kentucky where such coverage is not included.

A good deal of the time was spent in a discussion of football injuries and their prevention. Mr. L. V. Arnold, Assistant Commissioner from Michigan where much work has been done in this line, reported that they recommended going back to the soft rubber cleat. Thorough tests were made, Arnold stated, on the relative merits of rubber, leather and plastic helmets. Results showed the plastic helmet afforded most protection to the **wearer** but probably was more hazardous for the **other** boy. It was pointed out that many injuries had occurred by wearers of plastic helmets because they did not fit properly. As a result of these findings, Michigan and Wisconsin are conducting an experiment with a number of schools who will use soft helmets rather than the plastic ones, and comparative studies will be made later and tabulated. The Federation unanimously agreed to select a committee to meet with sporting goods manufacturers in the furtherance of a safety program.

An interesting finding was that, of the approximately 25 states represented at the meeting, a poll showed only Massachusetts, Kentucky and Ohio had a majority of its schools using the conventional rectangular backboard in its gymnasiums. Of these three, Ohio had nearly 50% of the schools using the fan shaped board and was going to take a vote this fall to determine whether one or the other should be prescribed for use. Without exception, the other states reported the fan-shaped board was in the greatest majority with the trend definitely in favor of it. Experiments are being made on the manufacture of a transparent fan-shaped board.



MALE HIGH SCHOOL MILE RELAY TEAM
Ties State Record of 3:33.4

(Left to Right) Deroy Scott, Captain Ed Hamilton, Jere Smith, Douglas Adamson.

One state had conducted a survey among seventeen widely-scattered states on the subject of spring football practice. One question asked was "What has been the effect on the quality of football as a result of no spring practice?" Of the seventeen replies, fifteen stated that there had been no difference while the other two stated that football had improved. Another question was "Have spring sports been improved?" and the answer was a resounding **yes** from **every** school. A final question was "Is there any disposition to return to spring practice?" and the answer was **no** in fifteen of the states and "very little" in the other two.

This survey was made in 17 of the most progressive states of the union and indicates a definite trend toward, and highly satisfactory results of, the abolition of spring practice of football.

FROM THE COMMISSIONER'S OFFICE

(Continued from Page Eighteen)

The number of boys insured last year represents only a fractional part of the number of boys who annually participate in athletics in Kentucky. It goes without saying that all athletes and students taking Physical Education are entitled to the protection offered by the Fund unless the school has another plan of underwriting the injuries which may be sustained by its students. If there is no legal obligation to give these students protection in the matter of injury costs, there is little doubt but that there is a moral one.

(Continued on Page Twenty)

MALE GOLFERS WIN

(Continued from Page Three)

lock, Madisonville; 260-Bauer, St. Henry; Wagner, St. Xavier; 261-Strother, University High; Newberry, Russellville; Baker, Middlesboro; 262-Williams, Winchester; 263-Harlowe, Flaget; 264-Savage, Dixie Heights; 265-Taylor, University High; 266-Johnson, College High; 268-Bragley, Henry Clay; McPherson, Winchester; Nash, Shelbyville; 270-Kloecker, University High; 271-Hartstern, Manual; 276-Bower, Dixie Heights; Herron, Flaget; 279-Dudley, Winchester; Colson, Middlesboro; 282-Smith, Anchorage; 284-Hommerich, St. Xavier; 286-Scalzitti, St. Xavier; Stein, Newport; 287-Terrell, Flaget; 288-Minning, Newport; 289-Sander, Newport; 291-Crumbacker, Madisonville; 297-Bright, Shelbyville; 300-Matchett, Dixie Heights; 303-Scott, Henry Clay; 309-White, Middlesboro; 315-Clayton, University High; 319-Utter, University High.

Tom Bacon of St. X won a play-off for fifth place in the individual contest with Jack Carpenter of Male.

In the driving contest Bob Logan of Shelbyville won with a beautiful drive of 233 yards, 2 feet and 8 inches, straight into the teeth of a stiff breeze. Bob Haag of Male and Frank McCormick of Winchester were less than two yards back for second and third.

Brown Cullen of Male won the approaching contest by stopping a 70-yard pitch $22\frac{3}{4}$ inches from the cup. Tom Bacon of St. X was second with a shot 33 inches away. Charles Jordan of Lafayette was a close third with a ball $34\frac{1}{4}$ inches away.

John Foster of Lafayette amazed even himself by sinking two of his three putts in the putting contest. Joe Baker of Middlesboro was second and Chesley Riddle of Madisonville third.

Coach Evan Settle of Shelbyville flattened the coaches in their special tournament (18-holes) with a snappy 74. H. L. Davis of Lafayette and Carlisle Myers, Jr. of University High tied for second with so-so 81's. Elmer (Baldy) Gilb of Henry Clay won a special and unidentified prize given by Col. Lee Read for having the fewest putts (29) on his tournament round. Baldy has been taking putting lessons.

Official trophies were presented at the close of play by Baseball Commissioner A. B. Chandler. At Lexington's only previous state-wide high school tournament held in 1938 Governor A. B. Chandler presented the trophies.

Special credit should be given to the very efficient performance of Alex Baxter, professional at the Lexington C. C., as starter and referee, and most particularly to Col. Lee S. Read, Sec'y of Southern Golf Association and Director of the U. S. G. A., for an outstanding job of scoring the tournament.

The K. H. S. A. A. is deeply grateful to the Lexington Country Club's officers and members for permitting the use of their very fine course for this tournament.

FROM THE COMMISSIONER'S OFFICE

(Continued from Page Nineteen)

New Association Rules

The 1948 K. H. S. A. A. Delegate Assembly made several changes in the rules of the Association. The 1948-49 booklet is now being printed, and copies of it will be included in the package of supplies sent to each member school. Principals and coaches should read the booklet carefully in order that they may not violate unknowingly any of the rules of the Association. Some of the most important changes were:

1. A school maintaining a football team is not allowed to play more than 24 basketball games during the season, and a school which does not maintain a football team shall not play more than 30. Games played in county, invitational, or conference tournaments must be counted in determining the number of games played.

2. No football game shall be played until the team has had three weeks of regular practice under the supervision and control of the coach.

3. All provisions of the Veterans' Rule were eliminated. All contestants become ineligible on their twentieth birthdays. The Commissioner no longer has the authority to waive the "preceding semester" or the "twenty-day" rule on behalf of returning veterans.

4. No meet, tournament, post-season game, or all-star contest will be sanctioned unless it is sponsored by a member school, conference, or group of schools, which shall have full control of planning, supervision,

FOOTBALL SUPPLIES

Your training season is "just around the corner".

Check up on cleats, blocking dummies, chin straps, practice jerseys, nine ounce duck shell pants, athletic supporters, sweat socks, first-aid supplies, ankle wraps, foam rubber, 54" heavy black or white laces, adhesive tape, shoulder pad and pant laces, thigh guards, etc.

Remember, we have all of the above **IN STOCK** as well as helmets, shoulder pads, injury pads, shoes, etc., and your order can be shipped the same day it is received.

We can give good delivery on game jerseys, game pants, helmets in special colors and other special game supplies; so phone us your order now.

Hunt's Athletic Goods Co.

Phone 103

MAYFIELD, KENTUCKY

"THE LARGEST INDEPENDENT EXCLUSIVE ATHLETIC HOUSE IN THE SOUTH"

and disposition of finances.

5. Only member schools having a schedule of least 12 basketball games with at least 6 different member schools are allowed to vote for the location of the district tournaments.

6. The football season is considered as beginning on the opening date of school and ending on December 1, and the basketball season is considered as beginning on the opening date of school and ending at the close of the State Tournament. No football games are to be played prior to the opening date of school. The Commissioner has been given the authority to waive the provisions of this rule when necessary to avoid conflict with contracts signed previous to the time of the annual meeting.

7. The Commissioner has been given the authority to determine the sites of the regional basketball tournaments.

8. The coach of a team is to be a duly certificated member of the school faculty.

the Official Sports Film Service and placed on loan with the Department of Extension, University of Kentucky. The picture contains many interesting features, and the sound effects are good. There are many play situations, and each illustrates some section of the football rules. Whenever it is necessary to slow down the action in order to make the rules application clear, scenes are frozen so that action is suspended long enough to permit the audience to follow the official's decision. Certain sections are illustrated by animated diagram. The picture is recommended for use at the many football meetings, which are held at the beginning of each season, and for use at school assemblies and at service group programs.

Five different films, taken during the 1948 State High School Basketball Tournament, are now on loan at the Department of Extension. These films, which are silent ones, include: (1) 900 feet of the Brewers-Clark County first round game, (2) 1600 feet of the other seven first round games, (3) 1200 feet of the four quarter-final games (4) 800 feet of the semi-final games, and (5) 900 feet of the final games played between Brewers and Maysville, including the presentation of trophies.

New Films

Two prints of the new football film, **FOOTBALL TODAY**, have been rented from

FOOTBALL & BASKETBALL ARE BACK . . . and SUTCLIFFE'S IS READY

Back to normal — and back to the joys of football and basketball. Sutcliffe's has prepared ably and well, and happily announce that practically every type of athletic equipment is again available. No more shortages! No more waiting!

Your school will require equipment, too. What do you need for the busy football and basketball seasons? It will be to your advantage to list your requirements NOW. Delivery immediately, or when school resumes.



Sutcliffe's New Fall Catalog will be mailed to all schools on or about September 1, but if you need quick service, telephone us, and ask for S. B. Arterburn or John Head. The telephone number is CLay 0283.

Traveling school representatives for Kentucky will also contact you during the year. Harry Blackburn, 1840 Linwood, Columbus, Ohio, will cover Big Sandy Valley; Bob Reis, 134 East Sixth, Newport, Ky., will cover Northern, Central and Eastern Kentucky; and Charles Shuster, Box 84, Horse Cave, Ky., will travel Western and Southern Kentucky.



OFFICIAL FOOTBALLS

| | |
|------------------|-----------|
| No. J5V—Spalding | } \$13.45 |
| No. WR—Wilson | |
| No. RS—Rawlings | |

Practice Balls, 6-OS, 1185 or XX \$10.00

OFFICIAL BASKETBALLS

| | |
|---|---------|
| No. 204—Spalding "Last Bilt" | \$21.00 |
| No. LB10—Wilson "Last Bilt" | 21.00 |
| No. RSS—Rawlings Moulded Ball | 19.50 |
| No. DL—Spalding Laceless | 19.85 |
| No. CR2—Voit Rubber Outdoor | 8.95 |

All prices quoted are school prices

THE

SUTCLIFFE CO.

LOUISVILLE 2, KENTUCKY

I N C.