

8-1-1951

The Kentucky High School Athlete, August 1951

Kentucky High School Athletic Association

Follow this and additional works at: <http://encompass.eku.edu/athlete>

Recommended Citation

Kentucky High School Athletic Association, "The Kentucky High School Athlete, August 1951" (1951). *The Athlete*. Book 526.
<http://encompass.eku.edu/athlete/526>

This Article is brought to you for free and open access by the Kentucky High School Athletic Association at Encompass. It has been accepted for inclusion in The Athlete by an authorized administrator of Encompass. For more information, please contact Linda.Sizemore@eku.edu.

THE KENTUCKY



High School Athlete

ST. XAVIER HIGH SCHOOL BASEBALL TEAM
K. H. S. A. A. CHAMPION—1951



(Left to Right) Front Row: King, Hillenbrand, Fussenegger, Wibbels, Reddington.
 Second Row: Mgr. Grever, Mgr. J. Newkirk, Lott, Goebel, Steilberg, Bayens, Mgr. J.
 Feldkamp, Mgr. P. Feldkamp. Third Row: Bickel, Kaiser, B. Newkirk, Ferrill, Short,
 Heckman, Bro. Norman, C.F.X., Coach.

Official Organ of the *KENTUCKY HIGH SCHOOL ATHLETIC ASSN.*

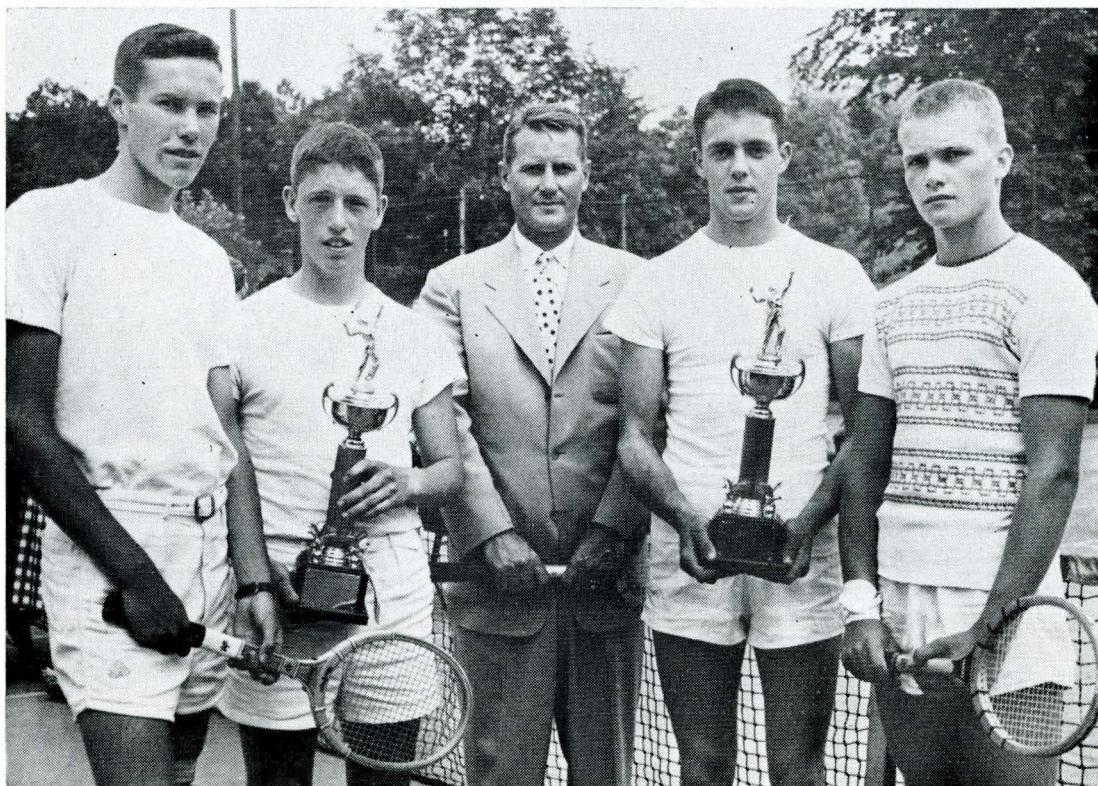
AUGUST - 1951

ST. XAVIER HIGH SCHOOL TRACK TEAM—K.H.S.A.A. CHAMPION - 1951



(Left to Right) Front Row: Coffman, Schmitt, Capt. Silliman, Gipperich, Klein, Bosler, Coach Meihaus. Second Row: White, Kelly, Carberry, Hayes, Brumleve, D. Mitchell, C. Mitchell. Third Row: Sweeney, Wedding, Ferguson, Schuhmann, Blessinger, Olliges, Vetter, Heckman. Fourth Row: D. Healy, Hackel, Donlon, Lally, Heuser, Mgr. Geiser, Mgr. Yates, Schuler.

GLASGOW HIGH SCHOOL DOUBLES TENNIS TEAM—K. H. S. A. A. CHAMPION - 1951



(Left to Right) Sam English and Calvin Barwick, Male High School, runner-up doubles team; Coach James Bravard of Glasgow; Powell Gillenwater and Freddie Travis, Glasgow championship doubles team.

The Kentucky High School Athlete

*Official Organ of the
Kentucky High School Athletic Association*

Vol. XIV—No. 1

AUGUST, 1951

\$100 Per Year

Commissioner's Message

The August issue of the magazine each year is filled almost entirely with statistical material, but much of this should be of interest to school administrators and coaches.

The sportsmanship ratings of K.H.S.A.A. member schools, as has been pointed out before, are not entirely objective, but they give the principal and coach a general idea concerning the school representatives who might conduct themselves in a manner approaching more nearly desirable ethics in the area of sportsmanship.

The ratings on officials should be used as a guide when officials are being employed for the forthcoming season. The least meaningful of the ratings, of course, will be in those instances where officials worked only a few games or where at least only a few ratings were received. Officials who were checked as having any appreciable number of faults have been notified by the State Office concerning these. Most officials accept this criticism as being constructive.

The matter of getting the reports from schools and officials on time for tabulation is still one of the greatest Association problems. The great majority of our school men and officials are most cooperative in this matter, but it was necessary to impose a fine on numerous schools and officials for failure to file their reports on or before the deadline set by the Board of Control.

The K.H.S.A.A. Protection Fund continues to insure more players from year to year, but more than three hundred member schools of the Association in 1950-51 failed to give this protection to boys playing on their teams. Many of the schools which do not insure their athletes in the Protection Fund accept the responsibility of protecting their players and pay for the cost of injuries out of their athletic funds. However, it is believed that the great majority of them do not accept an obligation in this matter, and expect the parents to pay for the injury. Although the school has no legal obligation in the matter of reimbursement for athletic injuries, there is little doubt but that there is a moral one. This being true, it would seem to be good procedure for the school administrator to 1) insure his players in the Pro-

tection Fund, paying the nominal fees out of athletic funds, 2) have a medical staff available for the treatment of injuries, working out a satisfactory arrangement with local doctors, or 3) explain the benefits of the Protection Fund to athletes and their parents, who might be interested in the insurance in the event the school accepts no responsibility for injuries. Three hundred thirty-one claims were paid by the Protection Fund in 1950-51, the total amount involved being \$5,968.99. The Protection Fund is actually run at a loss to the Association, more money being paid out in claims than is received in fees. The Board of Control hopes that every member school of the K.H.S.A.A. will take advantage of this Association service.

It was necessary to impose penalties, suspensions or probations, on ten member schools of the Association in 1950-51. Especially significant is the fact that all of these penalties came as a result of violations of K.H.S.A.A. By-Law 17, Practice of Sportsmanship. There is no doubt but that all of our school men are making an effort to comply with the regulations which their representatives in the Delegate Assembly from time to time have written into the Constitution, By-Laws, and Tournament Rules of the Association. However, a few have been somewhat careless in seeing to it that an adequate number of law enforcement officers have been present at their athletic contests, that potential trouble makers have been denied admittance to games or have been ejected for cause, and that arrests have been made promptly when the conduct of these trouble makers has warranted them. By-Law 17 is the most potent Association rule, and its implications should be explained thoroughly to all school representatives, including fans.

Kentucky continues to lag in the matter of spring sports, although it is encouraging to note the increase of interest in these from year to year. Our football and basketball teams are among the best in the nation, but many boys are still being denied the privilege of competing in track, baseball, golf, tennis, and swimming. Much work needs to be done in this area of athletics.

AUGUST, 1951

VOL. XIV—NO. 1

Published monthly, except June and July, by the Kentucky
High School Athletic Association.
Office of Publication Henderson, Ky.

Entered as second-class matter in the post office at Henderson,
Kentucky under the act of March 3 1879.

Editor.....THEO. A. SANFORD
Assistant Editor.....J. B. MANSFIELD
Henderson, Ky.

BOARD OF CONTROL

President.....Lyman V. Ginger, Lexington
Vice-President.....Talton K. Stone, Carrollton
Directors—Roy G. Eversole, Hazard; James L. Cobb, Newport;
Carlos Oakley, Morganfield; Cromer H. Arnett, Bandana;
Carl Hicks, Catlettsburg; William E. Kingsolver, Fort Knox.

Subscription Rates.....\$1.00 Per Year

From the Commissioner's Office

1951-52 Membership Dues

Statements for 1951-52 K.H.S.A.A. membership dues will be mailed soon to the principals of member schools registering last year. Principals should indicate the names of coaches only in those sports which will definitely be maintained during the coming school year. Lists of schools sponsoring the various sports are prepared from the information given on the statement forms, and the accuracy of these lists depends on the care given by the principals in filling out the forms.

Registration of Officials

Most previously registered football and basketball officials have received their renewal application cards for the 1951-52 school year. It was necessary to impose a fine on numerous officials who failed to file their reports on schools on or before the deadline set by the Board of Control for submitting the reports. Renewal cards have not been sent to the officials who have not as yet sent their fine remittances to the State Office. Such officials are not eligible to renew their membership in the Officials' Division of the Association until the fines are paid. K.H.S.A.A. exams in football and basketball have been prepared by clinic directors Lyman V. Ginger and Charlie Vettiner. An official registering for the first time is required to make a passing grade on this Association exam. Such officials should write for their application cards at once.

Football Clinics

The 1951 clinics for football officials are being conducted by K.H.S.A.A. President Lyman V. Ginger, a member of the National

Federation Football Committee. Eight of the nine scheduled meetings have already been held. The dates and sites were as follows: June 15, Bowling Green High School; June 16, Murray Training School; June 17, Barret M.T.H.S., Henderson; June 23, Ashland Y. M.C.; June 24, Pikeville High School; June 30, Pineville High School; July 2, Central Park, Louisville; July 7, Newport High School; September 2, University High School, Lexington.

Officials who found it impossible to attend one of the clinics at the scheduled time may make up their clinic attendance at any of the numerous area meetings of officials which will be held at various places in the state throughout the season. K.H.S.A.A. registered officials who live in other states and are unable to attend a Kentucky clinic may substitute clinics or similar meetings in their own states. However, as soon as each of these officials attends one of these meetings, he should notify the State Office of the K.H.S.A.A. accordingly or ask the secretary of the group to do so, in order to avert suspension from the K.H.S.A.A. for failure to comply with the provisions of the By-Laws relative to clinic attendance.

School For Basketball Officials

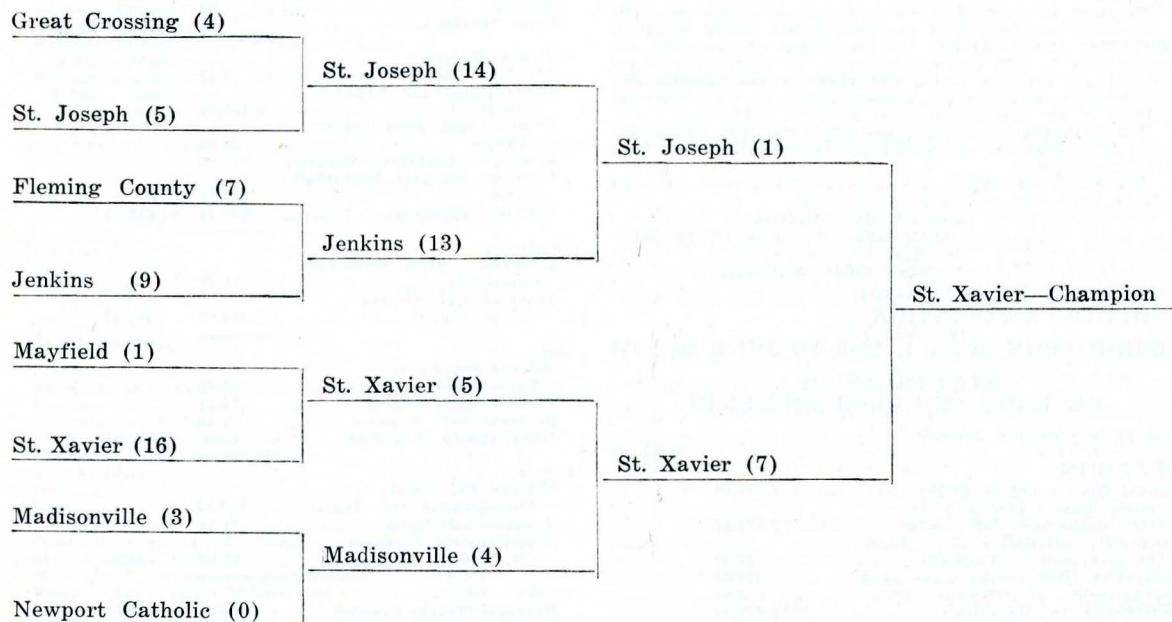
The third annual School For Basketball Officials will be held at Louisville on August 24-25. The school will be conducted by Charlie Vettiner, who has served the Association for many years in the program for training basketball officials. The program has not been announced as yet, but it will be similar to those of the last few years, consisting of demonstration games, demonstrations of officiating mechanics, an open forum on rules and play situations, etc.

An outstanding official from each of the sixteen basketball regions will be invited to the workshop. These officials will return to their respective regions and will conduct clinics and schools throughout the season. They will also be available for chapel programs and demonstration games, and will assist with the registering of new officials. The service which these regional representatives are giving to the member schools of the K.H.S.A.A. is increasing from year to year, and numerous letters have been received in the State Office concerning their fine work.

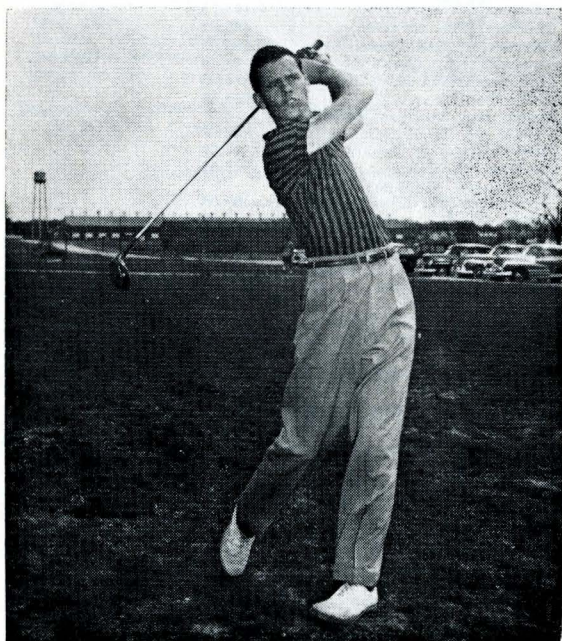
(Continued on Page Five)

Kentucky High School Baseball Tournament

Parkway Field, Louisville, Kentucky
June 1-2, 1951



St. Xavier Wins State Golf Tournament



Gay Brewer, Individual Champion

The St. Xavier High School golf team won its first K. H. S. A. A. State Tournament when school representatives shot the low score of 959 on the Officers Club Course at Fort Knox. The state affair, which was managed by Supt. William E. Kingsolver of Fort Knox, Board of Control member, was held on June 4-5.

Gay Brewer of the Lafayette High School was the individual champion, being the first high school golfer in the history of the Association to win the state championship for the third time. Brewer's 216 for the 54 holes was an even par. He has accumulated numerous honors in golf, having been National Junior champion for the past two years.

Louisville Male was second in the team scoring with 962, Lafayette was third with 967, and Kentucky Military Institute was fourth with 968.

A summary of the individual and team scores is as follows:

Beechwood: Turner, 232; Marlidge, 257; Krumpelman, 271; Smith, 280; Total—1040.

Bowling Green: Kirby, 248; Kemp, 256; Law, 254; Kelly, 252; Total—1010.

Clark County: A. Dudley, 277; M. Dudley, 247; L. Thornberry, 248; J. Thornberry, 244; Total—1016.

College: Grant, 260; Norman, 261; Vinson, 242; Barber, 277; Total—1040.

Dixie Heights: Stewart, 237; Bower, 267; Ruch, 256; McGuire, 306; Total—1066.

(Continued on Page Eight)

REPORT OF AUDIT

Louisville, Ky., July 14, 1951

Mr. Theodore A. Sanford, Secretary & Treasurer
Kentucky High School Athletic Association
Henderson, Kentucky

Dear Sir:

Pursuant to instructions received, we have made an audit of the books and records of the KENTUCKY HIGH SCHOOL ATHLETIC ASSOCIATION for the period of one year beginning July 1, 1950 to June 30, 1951. In addition, we have prepared and attached hereto statements of the Receipts and Disbursements, which in our opinion reflect the true financial condition of the Association as of June 30, 1951.

The Cash Funds on Hand and U. S. Savings Bonds Accounts were found to be correct and verified by letter from your depositories.

We found the records presented us for purpose of audit to be in agreement and in good condition.

Respectfully submitted,
JOHNSON-FOWLER & COMPANY
By Huet L. Johnson
Certified Public Accountant

KENTUCKY HIGH SCHOOL ATHLETIC ASSOCIATION

PERIOD FROM JULY 1, 1950 TO JUNE 30, 1951

STATEMENT OF RECEIPTS AND DISBURSEMENTS

Balance in Checking Account
July 1, 1950 \$4,760.34

RECEIPTS:

Annual Dues - 486 @ \$3.00	\$ 1,458.00	
Officials' Dues - 1290 @ \$3.00		3,870.00
(1009 Basketball, 281 Football)		
Reciprocity Officials - 27 @ \$1.00		27.00
(10 Basketball, 17 Football)		
Redeposits (Bad checks made good)	30.68	
Overpayments of Officials' Dues	3.00	
Advertising in Magazine	1,077.50	
Subscriptions to Magazine	11.00	
Interest Received from Bonds	1,337.50	
Sale of Rules Books	169.69	
Officials' Fines	5.00	
Transferred from Savings Account No. 1	4,000.00	
Transferred from Savings Account No. 2	4,000.00	
Transferred from State Basketball Tournament Account	57,629.20	
Refund Federal Tax	277.40	
Receipts State Baseball Tournament	498.50	74,394.47
		<u>\$79,154.81</u>

DISBURSEMENTS:

Board of Control Expense	\$ 2,975.49
Commissioner's Salary	5,957.20
Expense - Commissioner's Office	255.69
Assistant Commissioner's Salary	2,308.50
Clerical Help	5,125.00
Postage	806.85
Office Supplies	285.28
Purchase of New Equipment	510.14
Insurance on Office Equipment	32.91
Repairs on Equipment	124.20
Office Rent	1,465.00
Utilities	22.10
Telephone and Telegraph	794.36
Investigations - Board of Control	43.33
Fidelity Bonds	50.12
Printing	1,188.23
Appropriation to Kentucky Coaches Association	500.00
Purchase of National Federation Publications	1,530.40
Delegates to National Federation Meetings	940.85
Contribution - National Federation Meeting	50.00
National Federation Dues	22.50
Girls Division - N. S. W. A.	100.00
Rental on Films	134.41
Audit	40.00
Refund on Officials' Dues	3.00
Bad Checks	33.73
Service Charges - Bank	27.25
Meals - Annual Banquet	187.50
Speaker - Annual Banquet	75.00
Purchase of Bonds	10,000.00
Rental of Safety Deposit Box	3.60
Federal Tax:	
Income Tax Withheld	1,862.60
Social Security	232.40
	<u>2,095.00</u>

Transfer of Funds:

To Savings Accounts	18,000.00	
To K. H. S. A. A. Protection Fund	1,000.00	19,000.00

Magazine:

Printing and Engraving	2,717.07	
Editor's Office Expense	95.07	
Mailing	36.03	
Press Service	50.00	2,898.17

Officials' Division:

Officials' Bureaus	4.35	
Honorariums and Expenses - Clinics	789.27	
Printing and Miscellaneous Expense	36.63	
School for Basketball Officials' Expenses-Regional Basketball Clinics	913.99	
Officials' Emblems	262.11	2,239.13
	232.78	

Swimming:

Expenses - State Swimming Committee	78.45	
Trophies and Awards (State Tour.)	314.92	393.37

Golf:

Mileage and Local Entertainment (St. Tour.)	355.50	
Trophies and Awards	277.14	
Regional Golf Expense	5.40	
Miscellaneous Expenses	15.00	653.04

Tennis:

Mileage and Local Entertainment (St. Tour.)	112.32	
Trophies and Balls	651.56	
Miscellaneous Expenses (St. Tour.)	57.00	820.88

Track:

Regional Track Expense	20.00	
Trophies and Medals	906.62	
Committee Expense	81.45	
Officials	227.80	
Mileage and Local Entertainment (St. Meet.)	2,773.07	
Miscellaneous Expenses	48.20	4,057.14

Baseball:

Refunds on District Tour. Expenses	1,408.11	
Trophies and Awards	497.82	
Refunds on Reg. Tour. Exp. ...	282.98	
Baseballs (St. Tour.)	66.70	
Transportation (S. T.)	581.53	
Meals (S. T.)	906.89	
Rental and Services Parkway Field (S. T.)	369.20	
Ticket Sellers & Takers (S.T.)	40.00	
Lodging (S. T.)	541.48	
Tournament Manager's Expenses (S. T.)	69.09	
Scorer (S. T.)	25.00	
Umpires (S. T.)	168.00	
Federal Admissions Tax (S.T.)	79.76	
Contribution, Ky. Champion, S. E. States Tour.	200.00	5,236.56

First National Bank, Trustee

Annuitant Trust Fund	2,000.00	74,985.93
----------------------------	----------	-----------

Cash Balance in Bank

		<u>4,168.88</u>
--	--	-----------------

BANK RECONCILEMENT:

Balance per Bank Statement June 30, 1951		\$ 4,782.68
---	--	-------------

Less: Outstanding Checks:

No. 381	\$ 5.70	
No. 409	10.40	
No. 427	210.00	
No. 463	8.10	
No. 468	30.50	
No. 499	39.07	
No. 50184	
No. 502	300.23	
No. 503	3.06	
No. 504	6.00	
		<u>613.90</u>

True Bank Balance June 30, 1951

\$ 4,068.88

FUNDS ON HAND:

Cash Balance - First National Bank of Henderson	\$ 4,068.88
U. S. Savings Bonds (Value June 30, 1951)	61,244.00
Savings Account - Union Federal Savings and Loan Ass'n	10,000.00
Savings Account No. 1 - First National Bank - Henderson	4,033.48
Savings Account No. 2 - First National Bank - Henderson	4,102.88
Savings Account No. 3 - First National Bank - Henderson	4,149.23
K. H. S. A. A. Protection Fund	161.57

Total Funds on Hand June 30, 1951 \$87,760.04

**Receipts and Disbursements
1951 State Basketball Tournament**

RECEIPTS:

Profit on Program	2,600.92	89,997.02
Ticket Sales	\$87,396.10	

DISBURSEMENTS:

Printing	619.33
Trophies and Awards	429.69
Postage	45.09
Refunds on Tickets	74.00
Public Liability Insurance	441.60
Incidental Expenses (16 teams)	1,600.00
Transportation	1,209.35
Dodging	2,211.00
Meals	3,741.70
Coliseum Rental	3,000.00
Officials' Fees and Expenses	1,130.05
Scorers and Timers	320.00
Shot Chart Keepers and Statisticians	160.00
Ticket Sellers, Ticket Takers, and Guards	1,267.00
Public Address Announcers	75.00
Telephone and Telegraph	65.33
Towel Service	23.75
Signs	15.50
Trainer	40.00
Graves Cox, Miscellaneous Expenses—Ticket Sales	124.05
Miscellaneous Expenses—Tournament Manager	55.75
Honorariums and Expenses—Assistant Managers	729.12
Bad Checks	48.10
Service Charge—Bank	9.00
Detective Service	307.86
Federal Tax	14,625.55
	32,367.82

Transfer of Funds—Amt. transferred to K. H. S. A. A. as Tour. Profit \$57,629.20

**Receipts and Disbursements
K. H. S. A. A. Protection Fund
July 1, 1950 to June 30, 1951**

RECEIPTS:

Balance on Hand July 1, 1950	\$ 99.78
Football Fees - 1859 @ \$2.00	\$ 3,718.00
Basketball Fees - 2371 @ 50c	1,485.50
Baseball Fees - 163 @ 50c	81.50
Track Fees - 43 @ 50c	21.50
Redeposits (Bad checks made good)	14.05
Overpayments of Insurance Fees	2.00
Cash Transferred from K. H. S. A. A. Account	1,000.00

Total Receipts \$ 6,322.55

Total of Balance and Receipts \$ 6,422.33

DISBURSEMENTS:

Postage	\$ 60.12
Printing	212.00
Claims Paid:	
Football	4,370.30
Basketball	1,586.69
Baseball	12.00
Refund on Overpayments	2.00
Bad Checks	14.05
Service Charges—Bank	3.60

Total Disbursements 6,260.76

Total Funds on Hand \$ 161.57

BANK RECONCILEMENT:

Balance per Bank Statement June 30, 1951	327.17
Less: Outstanding Checks:	
No. 234	4.00
No. 291	20.00
No. 294	79.60
No. 300	4.00
No. 330	35.00
No. 333	5.00
No. 340	18.00
	165.60
True Bank Balance June 30, 1951	\$ 161.57

From the Commissioner's Office

(Continued from Page Two)

Last year the school was well attended by scores of other registered officials, and indications are that attendance at the 1951 meeting will be larger than ever before.

Reciprocity

The K.H.S.A.A. now has reciprocity agreements with the West Virginia H.S.A.A. and the Virginia High School League concerning the registration of officials. This applies to only those officials who want the "registered" status and not to those working for the higher ratings. Any Kentucky official who wants a reciprocity card which will qualify him to work football or basketball games in either of the states mentioned should write to the State Office and send a \$1.00 fee for each sport. The fee will be forwarded to the executive secretary of the state association involved.

National Federation Annual Meeting

The Thirty-Second Annual Meeting of the National Federation was held at Belgrade Lakes, Maine, on June 27-30. The K.H.S.A.A. was represented at the meeting by directors Roy G. Eversole and Carl Hicks. Forty state associations were represented at the meeting. Space requirements of this issue of the ATHLETE do not permit a report on the topics discussed. This information will be given in a subsequent issue of the magazine.

Social Security and Retirement

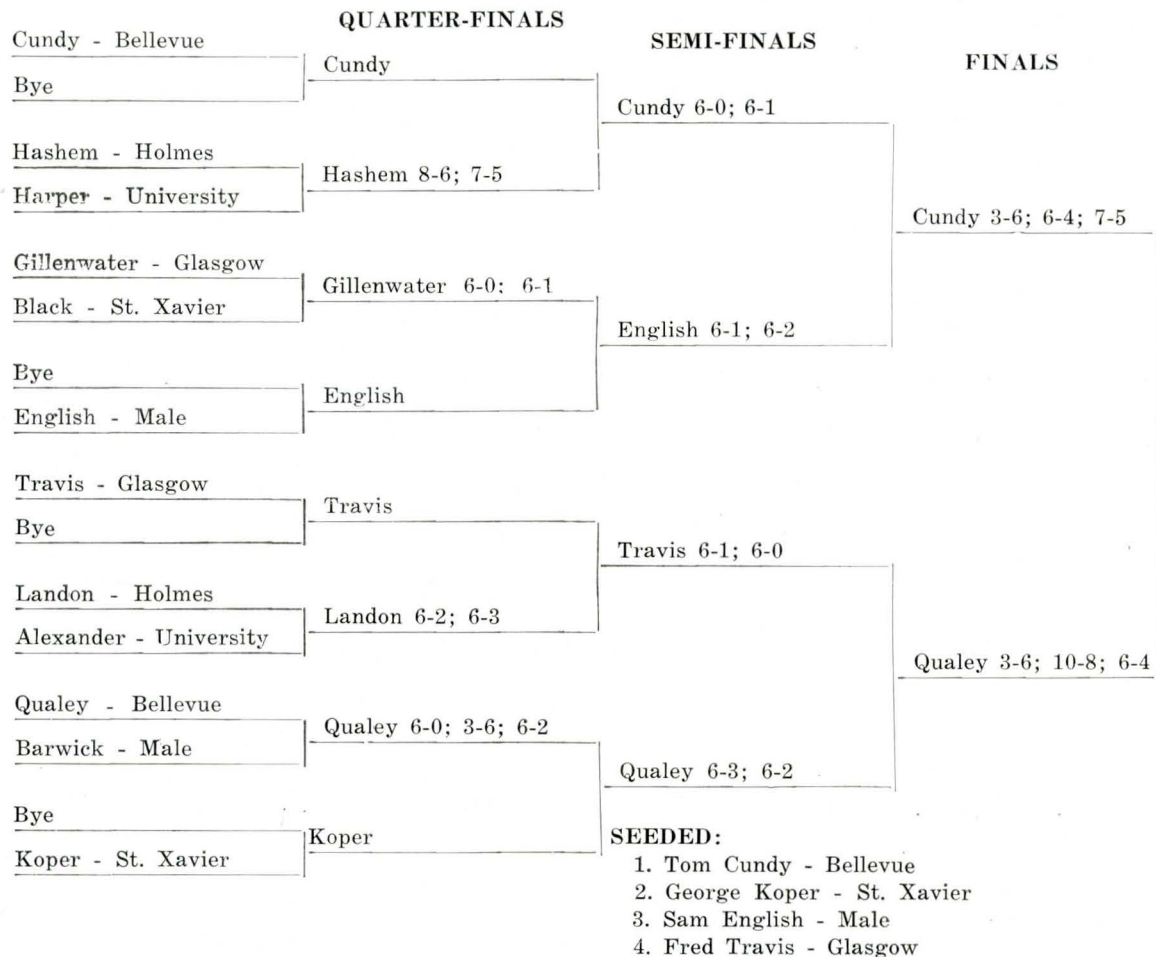
The Board of Control has had a committee working on the matter of social security and retirement for Association employees, and this committee made its report to the Board during a meeting held on June 1-2. It recommended that the Commissioner, Assistant Commissioner and office staff all be covered by Federal Social Security, that the Association pay the employer's contribution, and that each employee pay his own contribution according to law; and further recommended that the Association cooperate with the Commissioner in providing a small supplemental annuity, the reserve for this to be accumulated by contributions from the Commissioner

(Continued on Page Twenty)

Nineteenth Annual Kentucky High School Tennis Tournament

Bellevue High — May 28, 29, 1951

SINGLES

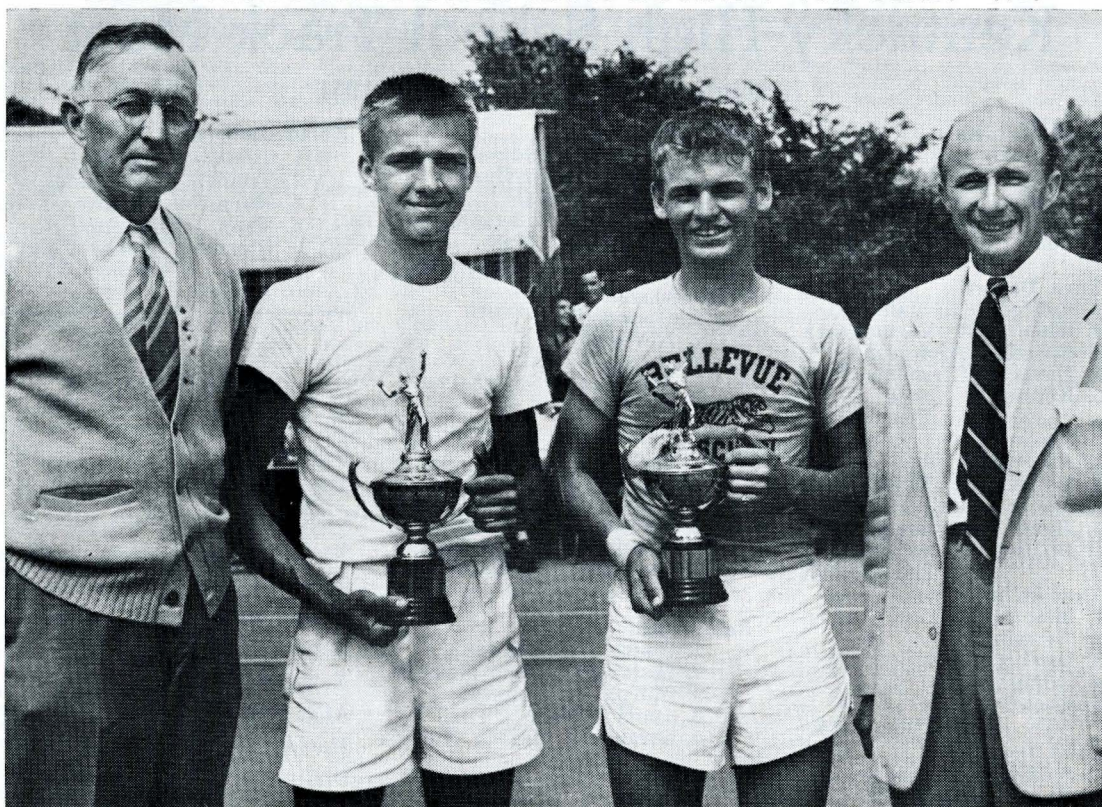


Cundy 8-6; 6-3

DOUBLES

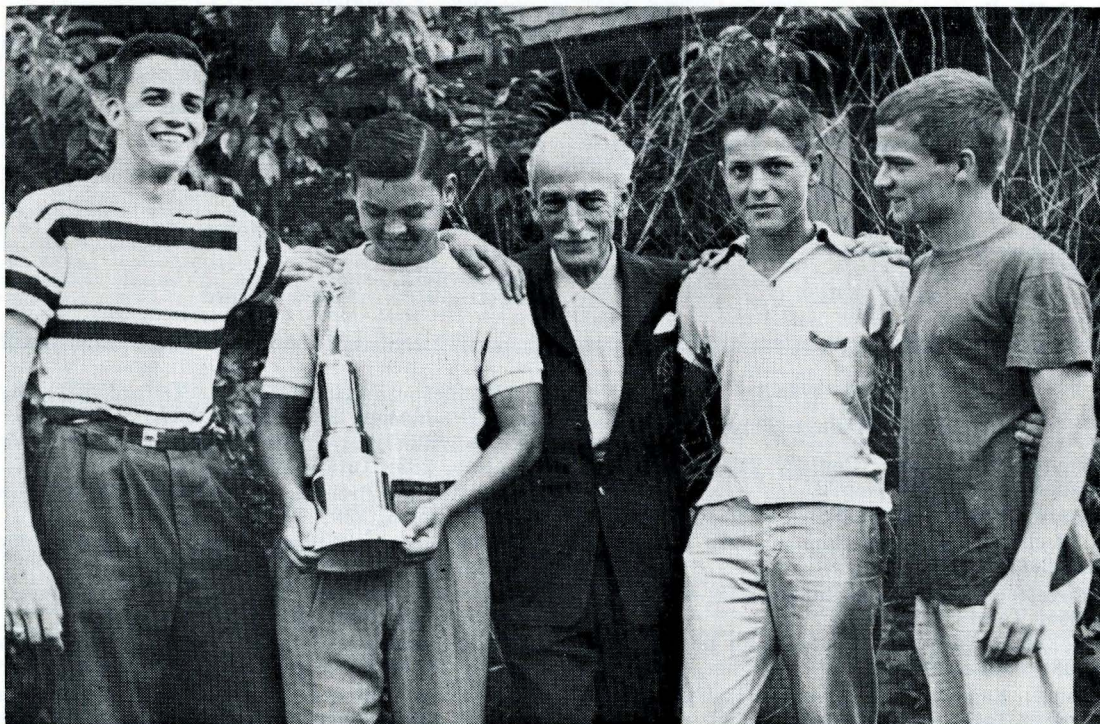


BELLEVUE HIGH SCHOOL SINGLES TENNIS CHAMPION—TOM CUNDY - 1951



(Left to Right) Dr. H. H. Downing, referee; Tom Cundy, Bellevue, champion; Tom Qualey, Bellevue, runner-up; Coach Roger Klein, Bellevue, tournament manager.

ST. XAVIER HIGH SCHOOL GOLF TEAM — K. H. S. A. A. CHAMPION - 1951



(Left to Right) Forst Brown, Jouett Brown, Col Lee S. Read (official scorer), Robert Nichols and Joseph Breckel, of the St. Xavier championship team.

Kentucky High School Track Meet

Lexington, Kentucky - May 18, 1951

120 Yard Hurdles—
 1. Silliman - St. Xavier
 2. Langston - Lafayette
 3. Curtice - Highlands
 4. Guy - Newport
 5. Cole - Tilghman
 Time: 15.0*

100 Yard Dash—
 1. Rohrer - Highlands
 2. Klein - St. Xavier
 3. Russell - Anderson
 4. Davis - Tilghman
 5. Kessinger - Male
 Time: 10.0

Mile Run—
 1. Eberhart - Male
 2. Bosler - St. Xavier
 3. Moore - University
 4. Hyatt - Anderson
 5. Douglas - Lone Oak
 Time: 4:40.6

880 Yard Relay—
 1. Male
 2. Newport
 3. Owensboro
 4. Holmes
 5. Eastern
 Time: 1:34.7

440 Yard Dash—
 1. Smith - Owensboro
 2. Hurst - Tilghman
 3. Perry - Anderson
 4. Howard - Manual
 5. McGehee - Holmes
 Time: 52.0

180 Yard Hurdles—
 1. Silliman - St. Xavier
 2. Langston - Lafayette
 3. Ries - Holmes
 4. Braukman - Bellevue
 5. Scott - Male
 Time: 19.9*

880 Yard Run—
 1. Hale - Murray Training
 2. Stice - Tilghman
 3. Jones - Manual
 4. Mulfinger - Lafayette
 5. Eberhart - Male
 Time: 2:04.7

220 Yard Dash—
 1. Rohrer - Highlands
 2. Klein - St. Xavier
 3. Iverson - Male
 4. Russell - Anderson
 5. Kessinger - Male
 Time: 22.3

Mile Relay—
 1. Owensboro
 2. Newport
 3. Holmes
 4. Manual
 5. Bellevue
 Time: 3:36.8

Shot Put—
 1. Francis - Lafayette
 2. T. Sammons - Raceland
 3. Kauth - Tilghman
 4. Handmaker - Tilghman
 5. Curtice - Highlands
 Distance: 47'11 3/8"

Pole Vault—
 1. Smith - Highlands
 2. Maloney - Dixie Heights
 3. Murphy - Holmes
 4. Dunn - Male
 5. Strange - Martha Norris Memorial
 5. Wile - University
 5. Sights - Henderson
 Height: 10'9 3/4"

Discus—
 1. Bivin - Manual
 2. Schuler - St. Xavier
 3. Francis - Lafayette
 4. Heckman - St. Xavier
 5. Ware - Owensboro
 Distance: 140'5 1/4"*

High Jump—
 1. Cole - Tilghman
 2. Kurfees - K.M.I.
 3. McCracken - Highlands
 3. Weaver - Stanford
 5. Tillman - Highlands
 5. Smith - Campbell County
 Height: 6'1"*

Broad Jump—
 1. Trinkle - Manual
 2. Tillman - Highlands
 3. Harp - Lafayette
 4. Tapp - Tilghman
 5. Starnes - Henry Clay
 Distance: 21'7 1/2"

TOTAL POINTS	
St. Xavier	30
Highlands	29
Tilghman	24
Lafayette	22
Male	21 1/2
Manual	19
Owensboro	16
Holmes	11 1/2
Newport	10
Anderson	10
Murray Training	6
Dixie Heights	4
K.M.I.	4
Raceland	4
University	3 1/3
Bellevue	3
Stanford	2 1/2
Eastern	1
Henry Clay	1
Lone Oak	1
Campbell County	1/2
Henderson	1/3
Martha Norris Memorial	1/3

* New Record

ST. XAVIER WINS

(Continued from Page Three)

Flaget: Braun, 242; Conliff, 237; Bradshaw, 252; Mahoney, 261; Total—992.
 Hazard: Baker, 259; Adkins, 279; Peters, 245.
 K. M. I.: Brown, 240; Cannon, 227; Hall, 233; Buckner, 268; Total—968.
 Lafayette: Brewer, 216; Radtke, 242; Kays, 265; Davis, 244; Total—967.
 Male: Shulhafer, 233; Marcus, 240; Brooks, 241; Scott, 243; Total—962.
 Manual: Raizor, 239; Daves, 264; Tyree, 247; Golden, 255; Total—1005.

Middlesboro: Hoe, 274; Shackelford, 273; Bingham, 279; Mason, 261; Total—1087.
 Russellville: Pate, 270; Simpson, 267; O'Brien, 277; Ray, 283; Total—1097.
 St. Xavier: Breckel, 243; Nichols, 239; J. Brown, 238; F. Brown, 239; Total—959.
 Winchester: William, 246; Dudley, 245; Rice, 250; Rainey, 240; Total—981.
 Driving Contest: Winner—John Y. Brown, K. M. I.; Second—Dean Radtke, Lafayette.
 Approaching Contest: Winner—Curtis Raizor, Manual; Second—Glenn Pate, Russellville.
 Putting Contest: Winner—Jerry Thornberry, Clark County; Second—Joe Kelley, Bowling Green.

Schools' Rating On Basketball Officials

The following ratings were received on basketball officials registered with the K.H.S.A.A. during 1950-51. The numbers following each name represent respectively the number of Excellent, Good, Fair, and Poor ratings given to the official.

Abbott, W. R., 0-0-0-1; Abney, Bob, 0-1-0-0; Ackman, Robert H., 5-12-10-1; Acton, John, 0-13-3-5; Adams, Frankie, 0-2-0-0; Adams, Ira Randolph, 3-6-4-0; Adams, Lucien, 50-6-1-1; Adams, Roy, 0-3-0-0; Adkins, Raymond C., 15-10-0-0; Adkins, Tom, 1-0-0-0; Adlich, Homer A., 1-11-8-1; Alexander, Rex E., 24-12-9-5; Alford, William C., 0-0-5-0; Allen, A. D., 0-2-0-0; Allison, Arthur, Jr., 1-0-2-0; Almond, Alvin, 2-0-0-0; Ammon, Paul G., 0-10-3-0; Arboe, Ralph M., 1-0-4-0; Arion, Joseph P., 0-12-6-0; Armbruster, Sam R., 0-2-2-0; Armstrong, Fred Wilson, 0-0-2-0; Armstrong, Gordon D., 0-0-2-0; Arzen, Stanley, 2-1-0-0; Ashby, James R., 6-3-2-1; Ashe, William, 2-4-1-0; Asher, Billy W., 0-3-1-1; Aspley, Bill, 4-26-5-1.

Bailey, Arville, 11-12-2-1; Bailey, Kerney, 0-9-1-4; Baird, Bill, 0-3-2-1; Baker, Earl C., Jr., 0-3-2-0; Baker, Edgar C., 0-1-0-0; Baker, James E., 9-5-1-0; Baker, James Monroe, 2-0-0-0; Ball, Denver, 2-4-1-1; Ball, Edwin, 1-2-4-1; Ballaban, Thomas N., 0-1-0-0; Ballard, Clark T., 3-3-2-0; Ballard, Jack H., 0-4-2-1; Ballard, Shirley, 3-0-2-1; Banko, Gus, 25-12-0-1; Barker, Walter D., 0-1-0-1; Barlow, Jay R., 27-36-0-2; Barnes, Lowell, 7-24-3-2; Barnett, J. W., 13-10-11-2; Basham, Bailey, 6-18-6-2; Bauer, Richard E., 4-7-1-0; Begley, James P., 0-4-3-0; Beiersdorfer, Jim, 9-6-0-0; Bell, Thomas P., 72-14-8-0; Bell, W. E., 3-3-0-2; Benedict, Steve, 7-9-3-0; Bennett, Logan, 6-2-0-0; Berry, James S., 0-1-4-0; Berry, Norman W., 1-3-0-0; Betz, Don, 6-25-7-1; Betz, Richard L., 35-40-9-7; Bishop, Charles Edward, 0-1-0-1; Bishop, Martin, 1-2-0-5; Blackburn, Bill, 1-12-4-0; Blankenship, J. G., 10-10-6-0; Blankenship, Tom., 1-7-0-0; Blanks, Douglas, 0-0-1-0; Blanton, Homer, 12-14-1-1; Bonner, William, 0-4-7-1; Bostic, Ralph, 28-12-1-0; Botto, Joe Donald, 6-0-1-0; Bowers, Leslie L., Jr., 0-2-0-0; Bowling, Floyd, 0-2-0-0; Bozarth, H., Jr., 4-4-0-0; Branaman, William H., 6-7-11-2; Brantley, Alfred C., 5-11-3-0; Braun, E. F., 6-1-0-0; Braun, Kenneth, 0-1-0-0; Braun, Robert, 13-29-7-1; Brichler, Joseph A., 0-0-1-0; Bridges, Bennie Edward, 26-17-2-0; Brinkmeyer, Robert, 0-5-0-0; Briscoe, Hubert, 7-6-4-0; Brizendine, Victor W., Jr., 21-15-7-3; Broderick, Carroll, 31-26-7-1; Brooks, Carroll C., 1-0-1-0; Brotzge, Maurice J., 3-0-1-0; Brown, Bryant, 2-7-5-2; Brown, James W., 17-11-1-0; Browning, Billy, 0-1-11-3; Bruner, G. Bud, 1-0-0-0; Bryan, William B., 3-7-3-0; Bryant, Jack E., 1-5-0-0; Buchanan, William H., 15-24-3-0; Bucy, LaVerne, 1-2-0-0; Bugg, Jackie Lee, 1-2-2-2; Bunger, Fred, 9-11-1-0; Burchett, Lanier, 4-5-0-2; Burke, Raymond, 19-28-9-6; Burman, Jack, 3-1-2-0; Bush, Billy R., 3-4-0-0; Bush, Herman Spencer, 5-8-3-0; Butcher, Donald J., 3-1-0-0; Butler, R. Cortez, 0-1-0-0; Butte, Eugene, 1-6-1-0; Byers, Richard L., 0-0-0-1.

Caddell, Howard, 3-3-4-2; Calhoun, Chandos, 1-2-0-0; Calhoun, Foster C., 4-9-1-0; Campbell, Coy, 0-7-0-1; Campbell, George H., 1-1-0-1; Campbell, Keller B., 0-1-2-1; Campbell, Robert W., 13-18-1-1; Carman, Donald Kenneth, 0-0-5-0; Carroll, Conrad E., 1-0-2-0; Carson, Earl J., 2-3-4-0; Carter, Darrell, 1-0-1-0; Carver, Billy F., 0-10-11-0; Casper, Alfred, 0-2-0-0; Cassidy, Charles W., 0-1-0-0; Cassidy, Lloyd, 8-2-1-0; Cassidy, Richard, 1-0-0-0; Casteel, Charles W., 0-1-0-0; Casteel, Ralph M., 2-3-0-0; Castle, Clyde L., 1-0-0-0; Castle, Floyd, Jr., 38-25-5-4; Caudill, James, 4-1-1-0; Cavender, Clifton, 4-5-0-0; Chambers, J. D., 0-1-0-0; Champion, Paul W., 1-4-1-0; Charnoli, Alfred M., 4-2-3-0; Chattin, Ernie, 23-13-4-0; Chumbler, W. W., 3-8-1-0; Claiborne, George E., 0-0-2-1; Clark, Buford T., 24-15-0-1; Clark, Charles E., 5-6-2-0; Clark, Samuel H., 1-7-0-0; Clark, Wilbur, 0-4-0-0; Clay, O. K., 5-7-0-0; Clegg, James B., 1-4-0-0; Click, Chester L., 0-1-0-0; Clift, Charlie, 46-23-3-0; Cline, Lyle T., 0-3-5-2; Cobb, Gene, 0-1-2-3; Coburn, Elsworth G., 0-1-1-1; Coe, Jimmy, 2-2-3-1; Cohen, Irvin H., 0-0-1-1; Coleman, Duke, 33-25-9-4; Coleman, Linton H., 6-6-0-0; Combs, Travis, 64-34-2-1; Combs, Walter H., 23-20-4-0; Conley, George D., 24-6-1-0; Conley, Tom W., 1-1-0-0; Connelly, James W., 0-12-2-3; Connor, James R., 7-5-0-0; Connor, Neal, 9-4-1-0; Cook, George Hardin, 0-0-0-1; Cooper, Hewlett, 0-7-6-12; Cooper, Isadore Philip, 0-3-1-0; Cooper, John Wellington, 41-22-6-1; Cooper, Warren H., 15-6-0-0; Cornett, Chalmers B., 4-10-2-0; Cornn, Harold, 2-8-1-0; Coulter, William M., 4-4-0-0; Cover, Harry E., 1-10-4-2; Cox, Charles Glenn, 0-1-1-1; Cox, Cliff J., 1-1-1-0; Cox, Layton, 2-6-4-0; Cox, Ralph, 6-5-1-1; Craig, John G., 4-1-2-0; Craig, Randy, 7-24-12-0; Crippen, Harold, 3-0-2-2; Crosthwaite, John S., Jr., 35-13-1-2; Cross, Hugh, 0-1-0-0; Crouch, Howard N., 6-15-6-2; Crow, John E., 0-8-0-0; Cubbage, Thomas H., 8-9-5-4; Cullivan, Jim, 8-5-2-0; Cummins, Albert, 3-0-5-4; Cunningham, Loyd, 0-4-0-0; Curry, Ellis, 0-1-0-0; Curtis, James E., 1-5-2-1; Curtis, Robert, 0-1-0-0.

Damico, Ernie, 2-0-0-0; D'Antoni, Andrew A., 0-0-4-0; Davenport, Henry C., 0-0-17-0; Davenport, Robert B., 3-11-7-1; Davenport, William, 1-2-0-0; Davidson, George W., Jr., 0-1-0-0; Davis, Dwight R., Jr., 1-0-0-1; Davis, Oscar, 0-2-2-0; Davis, Ralph, 16-12-5-0; Day, William T., 11-24-2-1; Deatherage, William L., 0-4-1-0; DeCoursey, Edgar J., 1-4-14-1; DeFreitas, Walter, 2-14-2-3; Delaney, William T., 0-4-0-0; DeMoisey,

Frenchy, 12-3-0-2; DeMoisey, Truett R., 4-8-1-0; Denes, N. G., 0-1-0-0; Denham, Charles R., 21-12-4-0; Dennison, William C., 0-5-2-3; Dennis, William G., 0-0-1-4; DeVault, Don, 7-8-3-0; Dexter, Sam, 0-7-7-4; Dixon, Lyman, 0-0-4-0; Dixon, William, 8-5-0-0; Dockery, Thomas, 3-13-1-0; Dodd, Garland V., 0-1-0-0; Dorsey, Ralph, 3-3-0-0; Downard, John J., 13-16-9-0; Downing, Dero, 18-3-0-0; Downing, Ronald A., 2-0-0-0; Doyle, Donald, 1-2-4-2; Driskill, W. B., 1-6-0-0; Dromo, John, 26-11-6-1; Dumbar, John 0-1-0-0; Duncan, Hickman, 9-1-0-0; Dunigan, Henry O., 0-3-0-0; Duning, Carl F., Sr., 18-5-9-4; Dunn, S. R., 6-18-11-0; Durbin, Louis E., 7-12-2-0; Durham, John B., 0-2-0-0; Durham, John R., 0-0-0-2; Durkin, Jack H., 27-26-10-0; Duvall, George, 0-5-2-0.

Eads, Walter, 0-1-0-0; Eblen, Charles D., Jr., 0-10-0-2; Eddings, Forrest, 0-1-4-1; Edelen, Ben R., 31-21-3-0; Edelen, Glen, 01-13-4-0; Ellington, Russell "Duke," 7-17-6-0; Ellis, Robert Harvey, 0-2-2-0; Ellis, Thomas B., 0-2-1-0; Ellis, Thomas G., 1-9-3-3; Elovitz, Carl, 3-10-0-0; Elrod, William T., 33-16-2-0; Engle, Don, 0-10-15-3; Engle, Orville L., 0-5-2-1; Ernst, Ray C., 0-2-1-9; Eversole, Elmer, 0-0-1-0.

Fagues, Homer, 0-0-1-1; Farley, Tom H., 1-9-0-0; Farris, Abe, 4-12-0-5; Faulkner, J. Hubert, 0-0-1-1; Ferrell, Doctor T., 20-21-3-1; Fey, Allen, 0-7-5-3; Fields, Edward C., 0-1-0-0; Fields, William A., 3-10-1-0; Figg, Charles Raymond, 5-10-4-1; Firestine, Frank, 3-7-11-0; Fish, Earle, 7-4-6-2; Fisher, Harold D., 0-0-1-0; Fisher, W. B., Jr., 3-5-0-0; Fitch, Walter W., 1-0-0-0; Fitchko, Bill, 11-2-0-0; Flaucher, Gene, 0-8-2-0; Fleming, James, 3-2-0-0; Flood, Earl, 0-0-1-0; Fogle, Philip R., Jr., 0-2-0-0; Folks, William M., 7-11-1-0; Ford, Douglas, 0-0-1-0; Ford, Wendell H., 5-8-1-0; Forsythe, Charles M., 2-1-6-1; Forsythe, Robert, 87-13-5-1; Fraley, Bill, 0-2-0-0; Fraley, James 3-10-1-0; Frecka, Toby, 2-3-2-0; Fryman, Bobby G., 2-0-3-0; Fultz, Jack, 0-0-2-0.

Gant, W. G., Jr., 14-21-6-3; Gardner, Daniel H., 31-17-2-2; Gardner, Howard E., 1-10-1-3; Gardner, Kessner, 1-2-0-0; Garland, William Jr., 0-1-0-0; Garner, Harold, 0-6-3-1; Gates, Thomas F., 4-7-5-7; Gates, William A., 0-1-0-0; Geselbracht, Albert, 18-7-0-2; Gibson, Romulus D., 7-10-2-2; Gill, Tunney, 0-1-0-0; Gillespie, Robert C., 0-0-3-0; Gillespie, Robert M., 0-1-0-0; Gish, Delmas, 0-3-0-0; Goettel, George A., 1-4-4-0; Goins, Bobby, 0-10-0-0; Gooch, Leonard, 1-19-2-3; Goodman, Jack, 0-1-0-0; Goranflo, R. E., 33-22-4-0; Gordon, Gene, 1-6-13-1; Gorley, Cecil L., 0-1-0-0; Gosser, J. B., 0-4-7-0; Gover, Robert J., 6-3-0-0; Grace, Charles K., 0-3-0-0; Grant, Marvin, 0-1-0-0; Greene, Robert J., 2-4-1-0; Greene, Tolbert E., 2-0-0-0; Greenlee, O. C., 0-0-2-0; Greenslait, James W., 1-5-0-0; Gunsten, Paul H., 7-10-2-0; Gustafson, Alford, Jr., 2-8-2-0; Gutzwiller, Robert T., 1-4-0-0.

Haas, Ralph, 0-0-0-1; Hadden, Newell, P., Jr. 22-29-2-0; Hafele, Charles, 0-4-0-0; Haffey, Stan, 3-11-5-0; Hager, James R., 0-0-1-0; Hale, H. Ed., 0-1-0-0; Hall, Charles W., 0-1-0-0; Hall, Denzil, 0-2-0-2; Hall, Elvis, 48-4-1-0; Hall, Jack R., 14-1-0-2; Hammons, Abe L., 33-17-7-6; Hammons, William Earl, 2-13-2-1; Haney, Robert J., 0-0-0-1; Hardy, Donald, 0-7-1-0; Harmon, Charles A., 6-12-1-0; Harrell, Bill, 10-5-3-1; Harris, George F., 15-11-0-9; Harris, James E., 0-2-0-2; Hartley, William E., 3-0-2-0; Hayden, Samuel J., 6-2-0-1; Hayes, F. N., 1-4-0-0; Haynes, John, 1-7-3-0; Head, Elmo C., 13-10-1-0; Heisler, Ray, 1-1-2-0; Heldman, John, 16-8-0-0; Hendon, C. B., 0-2-0-0; Hendon, Hardeman, 3-2-7-1; Hendrick, Stanley M., 10-12-4-3; Henry, Maxwell, 0-4-0-1; Herb, Pete, Jr., 2-2-1-1; Herrington, James T., 0-3-0-0; Hewling, Franklin C., 0-1-0-0; Hewling, Richard, 0-1-0-0; Hickey, Robert A., 16-7-0-0; Hicks, Robert E., 9-9-9-0; Hill, James, 0-0-1-1; Hill, Paul E., 6-20-17-4; Hines, G. Cliff, 36-12-4-0; Hipps, Olin D., 0-0-0-2; Hobbs, Ralph E., 26-7-0-2; Hodges, Holbert, 2-4-0-0; Hodges, Otis W., 0-2-0-0; Hofstetter, Joe, 2-2-1-0; Hoferer, Louis R., 1-2-6-0; Hoffman, Garnet, 2-5-0-0; Hogan, Turner, 13-19-0-1; Hogg, Ray H., 0-4-0-1; Holeman, Fletcher, 7-21-2-1; Honeycutt, Vernon, 31-10-6-1; Hood, Clayton, 13-5-5-0; Hooks, Floyd Lester, 0-1-0-0; Hoskins, Charles, 0-1-1-0; House, Darrell, 6-4-1-0; House, Elmer M., 2-8-0-0; Howard, Carl, 7-14-0-0; Howard, Harry, Jr., 2-6-0-1; Howard, Joe M., 16-8-0-0; Howard, Z. R., 7-2-1-0; Huber, Kenneth, 4-3-2-0; Hudson, Bob, 4-4-0-0; Hudson, Douglas, 1-7-3-0; Hudson, J. D., 9-4-2-1; Hughes, Charles, 34-22-3-0; Hummer, Irby, 0-2-0-0; Hunt, Joseph S., 0-3-1-1; Hurd, Fred, 2-16-7-0; Hurley, Herbert T., 5-15-6-3.

Irwin, Charles, 4-11-1-0; Isert, Louis, 1-3-3-0. Jackson, Gordon R., 0-0-6-2; Jackson, J. Coleman, 24-20-2-3; Jenkins, Audrey Neel, 1-1-2-0; Jennings, Harry T., 2-5-0-0; Jerger, Carl B., 4-5-1-1; Johns, Charles Wilson, 1-4-2-0; Johnson, Everett, 6-13-3-2; Johnson, Lonny, 0-2-1-0; Johnson, Jesse O., 4-16-8-0; Johnson, Paul, 0-3-0-0; Johnson, Tom, 3-10-3-1; Johnson, Vernon Lee, 0-0-0-2; Jones, Boyer, 1-2-0-0; Jones, Carl T., 2-0-0-0; Jones, Charles R., Jr., 0-3-4-0; Jones, James Calvin, 0-2-0-1; Jones, Kenneth, 1-5-3-1; Jones, Tommy, 0-1-0-0; Jordan, Kenny, 18-21-4-1.

Kays, Allen, 1-4-0-0; Keith, Lloyd C., 1-8-0-0; Keith, Theodore H., 0-1-1-1; Keller, Herman F., 0-0-0-1; Kelley, Jack

- W., 2-0-0-0; Kessinger, Thomas B., 38-12-6-3; Keys, Buddy, 0-2-1-0; King, Bob, 4-4-1-0; King, Donald Gene, 0-0-2-0; King, James A., 2-0-0-0; King, P. J., 1-2-2-0; Kinman, Joe T., 18-23-0-0; Kinsella, Bob, 1-4-3-0; Kirby, Keith, 3-11-0-0; Knight, Bill, 14-21-5-0; Knopf, Robert W., 0-1-0-0; Kohlmeyer, Robert X., 7-5-0-0; Kregel, John W., 0-2-0-0; Kremer, Joseph A., 0-2-0-0.
- Lambert, Kenneth L., 1-2-2-0; Lawless, Lyndell M., 0-1-0-1; Lawrence, Dave, 44-23-1-2; Lawrence, J. O., 1-8-2-1; Lawson, Carl E., 1-15-6-0; Lawson, Richard L., 0-1-1-0; Leach, Sergius, 6-13-3-2; Leath, Joseph M., 0-0-2-1; Leathers, Ollie, 2-8-2-1; Ledford, James, Jr., 1-7-1-0; Leet, Warren R., 1-29-8-1; LeForge, Edmund, 2-10-2-0; LeMaster, Charles, 0-10-3-0; LeRoy, Daniel E., 0-1-0-0; Leslie, James R., 0-0-2-0; Lewicki, Edward, 3-3-2-1; Lewis, Clyde, 6-12-1-0; Lewis, Edgar Donald, 1-8-8-0; Lewis, Thomas A., 2-0-0-1; Lile, William, 0-9-3-1; Lillpop, James, 0-5-0-0; Lindoff, Gilbert E., 8-5-3-0; Linker, Joe D., 2-9-3-0; Litteral, Harry F., 3-5-5-1; Long, Harry M., 3-5-0-1; Longenecker, David M., 30-6-0-0; Looney, Charles, 15-20-0-3; Looney, Dick, 38-41-6-6; Lowe, Robert Dalton, 0-5-5-0; Lutes, Ralph, 0-0-1-0; Lutgring, Charles J., 0-0-2-2; Lyons, Harold M., 0-8-1-0; Lytle, Price, 0-1-0-0.
- McAnich, E. R., 9-5-4-3; McCartt, Dock Shirley, 0-3-0-0; McCord, Anthony A., 1-6-0-2; McCowan, Connell, 1-0-0-0; McCreary, John F., 7-10-12-1; McCuiston, Pat M., 5-4-1-1; McCulloch, Malcolm, 5-9-0-0; McCutchan, Arad, 0-2-0-0; McDowell, Glen D., 21-39-2-0; McGhee, Laurence, 4-17-16-2; McGlasson, Galen, 3-15-4-2; McGraner, Paul H., 0-7-0-0; McGuffey, Harold, 62-4-3-0; McHale, Edward, 0-0-0-1; McKenzie, James Carl, 7-6-0-0; McLain, James, 0-7-2-2; McLeod, Robert M., Jr., 11-4-0-0; McMillan, J. N., 7-11-1-0; McNabb, Edgar, 15-12-1-0; McPherson, Alton, 0-0-0-1; McPike, Ray S., Jr., 3-10-9-0.
- Macon, Alan Leon, 1-1-5-0; Macon, Max, 6-12-2-0; Maguire, John D., 0-3-2-1; Mahan, Boyd W., 18-24-3-0; Mahan, Carle, 0-1-0-0; Maines, George, 0-5-4-0; Majors, Damon, 8-3-3-1; Majors, Hugh B., 0-1-0-0; Mannin, Jimmie, 0-1-4-0; Mansfield, James T., 1-14-0-0; Martin, Buford, 0-2-5-2; Mason, James E., 19-37-3-1; Mauzey, Harold W., 4-2-3-0; Mayes, Edward, 0-3-6-2; Mays, Ralph J., 23-10-2-3; Mazza, Albert, 1-2-0-0; Meade, Foster, 18-33-18-3; Meeks Otis, 0-8-1-2; Meisel, Charles, 0-1-1-0; Metcalf, Earl L., 30-8-2-0; Metcalf, Harold E., 3-0-5-0; Meyer, Clyde E., 0-0-2-1; Meyer, Louis R., 4-3-0-0; Meyer, Paul W., 0-1-0-0; Michaels, George M., 8-8-0-0; Mielcarek, Chester N., 0-1-0-0; Miller, Bob, 31-10-0-0; Miller, Jack Tye, 0-0-1-1; Miller, Jerry R. L., 1-0-1-0; Miller, Rex J., 6-2-1-0; Miller, Roy, 0-2-1-0; Mills, Claude, 1-9-3-0; Mitchell, James A., 0-2-0-0; Molen, James P., 0-4-8-2; Montgomery, W. G., 25-14-2-1; Moore, Charles D., 2-0-1-0; Morgan, Bill, 3-17-0-0; Morgan, Lawrence E., 3-0-0-0; Moricle, John, 2-3-1-0; Morrow, H. L., 2-7-9-1; Moseley, Henry, 1-1-6-3; Moss, Julian, 0-1-0-0; Moss, Walter Anderson, 3-4-2-0; Mudd, Edward, 10-27-5-3; Mulligan, J. T., 4-15-5-2; Mullins, Harold W., 0-0-1-0; Mussman, Ralph, 5-4-4-0; Myers, Robert B., 39-16-1-5.
- Nance, William B., 0-1-2-0; Nash, William R., 1-12-3-1; Nau, Bill, 21-24-10-2; Neal, Gene, 27-7-5-1; Neal, Melvin E., 5-12-2-1; Neathamer, Thomas, 1-9-2-0; Neiser, Jack H., 0-1-0-0; Nelson, Charles L., 4-2-1-0; Nelson, Robert E., 0-3-0-0; Neumann, Jerry, 0-2-0-1; Newby, Paul H., 1-7-4-1; Newsom, Luther Garland, 5-20-4-0; Newsom, L. M., 0-7-0-0; Newsom, Marley, 11-6-5-2; Newsome, Forest, 1-8-3-2; Newton, Reason G., 10-11-0-0; Nickell, Duane, 6-0-0-0; Niemeier, Pelsor C., 23-5-1-4; Nimmo, Lo, 16-11-3-0; Noel, George E., 0-0-0-2; Nonnemacher, Pete, 0-1-0-0; Nord, Edward M., Jr., 2-1-2-0; Northup, W. O., 2-8-0-0; Norton, C. Edgar, 2-12-1-0; Nunemaker, John, 6-22-5-5; Nunn, Winston C., 1-0-1-1.
- Oakley, Norris H., 3-13-4-5; O'Brien, Tim, 16-14-2-0; O'Daniel, Henry, 0-0-1-0; O'Dell, D. R., 5-0-0-0; Oldham, Charles, 0-0-0-1; Omer, Billy W., 3-14-10-4; O'Nan, David, 0-8-3-2; O'Nan, Eugene, 3-8-5-2; Osborne, Bill, 10-13-5-1; Owen, James Gerald, 0-0-1-0; Oxley, Lus, 42-27-18-0.
- Parke, Paul Gene, 0-7-0-0; Parker, Billy, 14-4-2-0; Parker, James P., 3-15-0-1; Parker, M. L., 0-1-1-3; Parsons, W. E., 16-14-7-13; Patrick, Charles C., 27-11-0-0; Patrick, Charles D., 2-0-0-0; Patterson, G. Rowland, 8-8-3-0; Paulin, Al, 0-2-2-1; Peden, Harlan, 1-6-2-0; Pendergraft, Ray, 0-8-0-0; Pergrem, Bernard, 1-4-0-1; Perry, Charles, 1-2-0-0; Perry, Ernest N., 0-0-2-0; Perry, Ralph D., 1-8-11-2; Perry, William D., 0-2-3-0; Peterson, J. B., 0-1-0-0; Pewitt, Charles O., 0-8-3-0; Phelps, Rudy, 1-3-0-0; Phillips, Paul, 4-10-5-0; Phipps, Guy E., 1-6-4-0; Picciano, John, 2-1-1-0; Poppas, Nicholas, 11-21-13-0; Porter, C. A., 27-5-3-0; Posey, Robert W., 0-2-3-0; Postlewaite, Clarence A., 0-1-3-0; Postlewaite, George D., 1-0-3-2; Potter, James W., 0-4-0-0; Powell, Kenneth, 2-1-0-0; Powell, Richard, 0-1-5-2; Prater, Earl C., 0-3-2-0; Priest, James A., 2-15-2-0; Price, Charlie, 3-9-4-3; Priode, Len, 1-0-0-0; Pursifull, Cleophus, 20-15-1-0.
- Quisenberry, William J., 0-0-6-1.
- Radjunas, Stan, 22-19-2-0; Rakel, Roland G., 1-0-0-0; Rall, Clarence Eugene, 1-10-3-0; Ramey, Charles W., 3-0-0-0; Raque, Norbert N., 14-16-4-1; Ratterman, Bernard W., 29-16-1-6; Ray, Robert, 0-3-2-0; Reams, William E., 1-2-1-0; Redden, J. D., 1-0-1-0; Redmond, Simon, 8-12-6-2; Reed, Joe S., 0-1-0-0; Reed, Ralph D., 16-1-0-0; Reinhart, Gene, 4-3-2-0; Reinhardt, Myron S., 0-1-0-0; Rentz, Thomas W., 29-21-7-3; Rhoads, Ray T., 0-2-6-1; Rice, Homer, 4-8-10-0; Rice, James F., 0-0-1-0; Richards Logan, 0-1-2-0; Richardson, C. H., 11-10-6-0; Richardson, Elmer G., 2-12-5-1; Richardson, Joe M., 3-30-3-0; Riddle, George W., 15-12-4-0; Ries, Robert R., 2-9-0-0; Riggins, Ed Dale, 1-1-0-0; Rigney, Leo R., 1-2-3-0; Robbins, Burgess, 0-2-0-0; Roberts, Earl C., 4-22-1-0; Roberts, Eugene, 5-3-0-0; Roberts, William J., 9-10-3-0; Robertson, Everett, 22-12-2-0; Robertson, Lee, 0-1-0-0; Robinson, C. F., 0-0-1-0; Robinson, John E., 20-36-5-0; Robinson, John, Jr., 0-13-0-1; Rocke, James M., 29-10-5-0; Roehm, Leslie L., 0-2-0-0; Rolfes, Frank B., 0-1-0-0; Roller, Otis, 4-4-14-1; Rolph, Harold J., 3-3-0-0; Rose, Alfred William, 1-0-0-0; Rose, Howard L., 0-3-0-4; Rothschild, Charles, 19-8-3-1; Rouse, Clyde L., 9-6-6-1; Rowe, Ellis G., 0-3-1-0; Rozen, Morris 22-6-4-0; Rubarts, Leland G., 0-2-0-0; Russell, Eugene D., 1-7-0-0; Russell, Joe, 6-8-0-0; Rust, William H., 2-1-0-0.
- Sabato, Al, 0-1-1-0; Sadler, George A., 3-0-0-0; Salvato, Anthony V., 0-2-3-1; Salmon, Horace Glenn, 0-2-1-0; Sames, Bill, 1-12-5-0; Sanders, Everett, 6-0-1-0; Sanders, Foster J., 3-12-3-0; Sanders, Milton L., 18-27-1-2; Sandlin, Tolbert H., 0-2-3-0; Saunders, Harold Y., 24-20-5-0; Scheben, William, 1-1-0-0; Schmitt, K. F., 36-15-5-6; Schooley, William J., 0-0-1-0; Schroer, David N., 5-7-0-0; Schuette, Frederick, 6-13-2-0; Schultz, William P., 0-3-2-0; Scott, Palmer, Jr., 6-2-1-1; Scott, Roy, 8-10-0-0; Scott, W. L., 2-4-0-2; Selbee, William A., 2-1-0-0; Selvy, Curt, 5-12-0-0; Semple, Robert G., 0-9-0-1; Settle, Evan E., 5-11-2-1; Settle, Roy G., 21-25-0-0; Sexton, William L., 0-1-0-0; Shaver, Roy A., 4-1-1-0; Shaw, Elye, 0-3-0-1; Shaw, Kenneth, 0-0-2-0; Sherry, Vincent J., Jr., 0-1-1-0; Shields, Paul, Jr., 2-6-3-4; Shively, Bernie A., 11-2-1-1; Shoupe, Edgar, 0-1-1-0; Shoupe, Flem D., 0-0-0-1; Showalter, John, 12-2-3-0; Shuster, Charles, 9-13-2-0; Sickmann, Robert, 2-5-0-0; Sifrig, Bernard, 0-0-3-1; Siler, Clarence M., 24-9-3-1; Siler, Robert L., 0-2-0-0; Silke, Paul W., 3-4-1-0; Singleton, Manfred, 0-2-0-2; Slinker, J. M., 0-1-0-0; Sloan, Wallace, 3-3-1-0; Smith, Edgar J., 2-9-6-1; Smith, Ray, 0-0-1-8; Smith, Wilbur O., 0-3-0-0; Smith, Wyatt J., 76-17-8-1; Snyder, F. L., 1-0-0-0; Sosh, Larue 2-11-0-0; Sosh, Nelson, 1-1-0-0; South, Wendell, 4-8-1-1; Sparks, Harry M., 34-32-8-3; Spalding, Stanley H., 0-1-2-0; Spencer, Edward, 0-2-0-1; Sprinkle, Ivan, 10-1-1-0; Spurgeon, Kermit, 0-1-0-0; Spurlock, Ralph, 0-0-3-0; Stallions, Howard E., 0-2-0-0; Stanley, Glendon, 1-1-1-0; Stapleton, Davis B., 2-0-0-0; Steely, H. B., 0-3-2-1; Steenken, William R., 11-7-9-0; Steers, Roy L., 42-15-3-0; Steiger, Al, 4-7-3-0; Steiner, Chester N., 1-4-0-0; Stephens, Robert J., 3-0-0-0; Stephenson, Harry S., 16-14-5-0; Stevens, Paul B., 3-15-5-1; Stith, Bob, 19-7-1-2; Stone, Clifton, 1-1-1-0; Stovall, Harrel, 2-12-0-1; Stovall, J. C., 0-3-1-1; Strange, Frederick, 10-17-8-3; Straub, Charles, 1-3-0-2; Strong, Arnett, 7-9-0-4; Strong, Thomas K., 9-6-3-0; Stroube, William H 2-3-0-0; Strull, Asher, 21-15-4-0; Stubbs, Harold, 0-2-0-0; Sturgill, Barkley J., 0-4-0-0; Sturgill, William B., 0-3-0-1; Sullivan, Charles, 0-0-0-1; Susott, Wilfred A., 8-3-0-0; Sutherland, G. L., 14-8-0-1.
- Tackett, Raymond N., 0-11-8-4; Taylor, Edwin L., 10-9-5-0; Taylor, Hal, 3-0-5-1; Taylor, Kenneth H., 11-14-1-0; Taylor, Robert S., 3-10-3-0; Taylor, Robert Wilson, 0-1-1-0; Taylor, Wilbur H., 0-4-0-0; Teague, Amos, 13-39-5-1; Temple, J. B., 0-1-6-1; Thompson, E. Paul, 0-1-7-0; Thompson, Jack, 60-31-5-0; Thompson, Ralph, 10-13-9-3; Thomson, George G., 4-3-1-1; Thornton, Cecil A., 11-9-1-1; Thrasher, Hugh R., 3-3-0-0; Tilly, Huell M., 12-35-5-4; Timmons, Charles D., 4-1-10-1; Tincher, Robert, 26-25-5-4; Tingle, Hayward B., 0-0-2-0; Tobe, Larry, 0-2-0-0; Topmiller, Ben, Jr., 0-1-1-0; Trent, J. H., 0-1-0-0; Tuck, Ockell L. 3-9-3-2; Tuell, Chester Edward, Jr., 10-11-3-0; Turner, Eugene V., 4-3-2-0; Tyler, Hugh W., 1-13-6-2.
- Upton, David R., 0-1-0-0; Upton, Leon, 2-0-1-1; Usher, Lee, 1-15-0-0; Utley, William O., 5-13-0-1; Uzzle, David, 0-1-0-0.
- Vance, Earl G., 0-0-4-2; Vandenberg, Ralph, 3-0-0-1; Vanduzor, John T., 0-4-0-3; VanZant, Jim, 3-2-2-2; Varble, William, 17-18-10-3; Varney, Alex A., 0-3-0-0; Vaughn, L. L., 0-3-0-0; Visnic, Nick, Jr., 0-0-1-0.
- Walden, Dot, 6-15-3-2; Walden, Tot, 6-16-0-1; Walker, Jack, 0-2-0-0; Wallace, Junior, 0-1-2-0; Walker, Paul R., 16-11-2-0; Waller, Charles L., 8-15-2-3; Waller, Harris Lynn, 0-0-0-1; Walther, Louis B., 5-4-1-0; Wanchie, Nicholas, 1-1-0-0; Ward, Robert, 0-2-0-0; Warth, Emerson, 5-8-14-0; Watson, James T., 0-1-0-0; Watson, Ronald L., 3-10-1-0; Watts, Lewis C., 0-2-0-0; Webb, Leonard W., 0-1-0-0; Weisbrodt, Paul E., 4-3-1-0; Wellman, Earl, 2-3-0-0; Wells, Milford, 30-17-9-0; Whipple, Lloyd G., 29-11-0-0; White, Albert, 0-0-2-0; Wikstrom, Thomas, 1-8-2-1; Wilcoxson, Billy Burke, 8-1-3-0; Wilder, Charles D., 0-11-4-2; Wilkins, C. T., 0-1-2-0; Wilkinson, F. D., 4-11-1-1; Willett, Arthur, 4-0-0-1; Willett, William Howard, 0-0-2-0; Willey, Harold L., 5-1-2-0; Williams, James Henry, 0-0-2-0; Williams, Reid V., 0-1-0-0; Williams, Roy E., 0-3-0-1; Williams, Tom M., Jr., 21-16-2-2; Wilmhoff, Bert H., 1-2-1-1; Wilson, William E., 0-2-0-1; Winfrey, Shelby, 16-1-0-0; Wirtz, Leonard F., 3-0-0-1; Witschger, LeRoy J., 2-1-1-0; Woford, Ernest, 7-7-8-1; Wood, James W., 4-4-6-0; Wrightson, Arthur, 2-13-1-0; Wurtz, Emil H., 0-2-2-0.
- Yaggi, Bill, 13,2,0,0; Yarmesch, Robert, 0-0-3-0; Yearby, Donald, 0-0-2-1; Yessin, Humzey, 21-24-9-0; Yessin, Rudy, 13-4-0-0; Young, Roy, 8-21-1-4.
- Zachary, Alvin L., 4-10-0-1; Zachem, Vincent, 73-19-2-0.

Officials' Ratings On Sportsmanship Of K.H.S.S.A. Member Schools

FOOTBALL AND BASKETBALL, 1950-51

SCHOOL	COACH				OTHER SCHOOL OFFICIALS				CROWD				TEAM			
	E	G	F	P	E	G	F	P	E	G	F	P	E	G	F	P
Adairville	21	1	1	2	18	2	3	2	16	3	5	1	16	6	3	
Allen Co. (Scottsville)	33	8	2	1	40	3	1		35	1	8		38	5	1	
Almo	33	1			32	2			25	8	1		23	9	2	
Alvaton	29	6	2		28	9			28	7	2		29	7	1	
Anderson (Lawrenceburg)	31	16	5	6	40	12	4	2	32	19	4	3	34	16	5	3
Annville	16	7	2		18	6	1		15	8	2		18	5	2	
Arlington	16	12	1	4	24	4	5		11	13	7	2	22	10	1	
Artemus	14	3			13	4			16	1			12	4	1	
Ashland	56	6			53	8			40	21			41	17	2	1
Athens (Lexington)	29	3	1		27	5	1		20	10	2	1	26	5		
Atherton (Louisville)	29	8	3	6	35	4	5	2	36	10	1		40	6		
Auburn	17	1	1		17	2			13	3	3		15	3		1
Augusta	23	4	5	2	26	5	2	1	16	12	4	2	24	9		1
Austin-Tracy	26	6	1		29	4			24	6	3		25	6	2	
Auxier	16	2	2		17	2	1		16	2	2		16	1	3	
Bagdad	23	8			25	4		1	18	8	1	4	20	7	4	
Bald Knob (Frankfort)	17	5	3	3	20	6	1		14	10	4		13	13	2	
Ballard Co. (La Center)	25	3			22	2	3		18	6	1	3	21	6		1
Bandana	22	9	2	1	22	11	1		12	16	3	3	19	15		
Barbourville	50	4	2	1	54	3			47	6	3		50	6	1	
Bardstown	47	4			49	2			46	5			48	3		
Bardwell	19	6	4		19	7	3		14	9	3	3	18	11		
Barlow-Kevil (Barlow)	30	6	1	2	34	5			27	10	2		25	6	7	1
Barret Manual (Henderson)	48	6	2	4	55	5			47	11	1	1	49	8	3	
Beaver Dam	20	5	4		23	5			17	10	2		20	8		
Beech Grove	27	4			25	6			24	4	2	1	25	6		
Beechwood (Fort Mitchell)	45	6	1		47	5			38	12	1		41	9	2	
Belfry	52	7	3	2	52	7	3	2	44	9	6	5	48	9	7	1
Bell Co. (Pineville)	31	15	2	1	41	6		1	30	8	8	2	28	11	6	4
Bellevue	56	8	1	1	61	5			51	13	1		55	9	2	
Benham	33	7			37	3			37	7	1	3	34	5	1	
Benton	28	8	3	3	31	10	1		24	16	2		26	13	2	
Berea	36	7	3		37	7	1		25	9	9	3	34	8	4	
Berea Foundation	23	1	2		24		1		16	2	8		16	2	8	
Bethany (Beechwood)	25	5	1		17	10			15	16			13	16	2	
Bethel	19	4			20	2	1		16	4	2	1	18	3	1	1
Betsy Layne	31	2	3	1	30	3	2	1	28	5	3	1	28	5	3	1
Black Star (Alva)	33	5	2	6	39	4	3		32	3	10	1	36	5	5	
Blaine	12	5	1		14	4			9	7	2		9	8	1	
Blandville	20	5	4	3	21	7	3		15	8	6	3	18	4	4	1
Bloomfield	29	4			28	4			27	6			27	5		1
Bourbon Co. Voc. (Paris)	35	5	1		35	5			29	9	1		36	5		
Bowling Green	50	8	2		54	6			48	8	4		50	8	2	
Boyd County (Ashland)	44	7	2	3	52	2	2		35	11	5	4	31	17	3	
Bracken Co. (Brooksville)	34	13	2		38	11			21	23	2	1	22	17	2	1
Bradfordsville	15	15	10	7	18	21	4	4	15	22	5	5	15	18	12	2
Breathitt Co. (Jackson)	19	2			17	4			15	5	1		17	3	1	
Breckinridge Co. (Hardinsburg)	43	4	2		44	5			37	7	4	1	41	4	4	1
Breckinridge Trg. (Morehead)	18	15	5	5	30	11	2		23	15	5		20	16	4	3
Breeding	4	9	5	1	11	8			7	8	3	1	3	11	5	
Bremen	16	12	2		15	10	4		13	11	3	3	11	17	2	
Brewers	20	11	5	1	20	13	1	1	17	13	4	3	18	10	5	1
Bridgeport (Frankfort)	18	9	6	2	26	5	3		18	12	3	2	20	10	5	
Bristow	20	4	4	1	24	5			22	5	2		23	5		1
Brodhead	17	11	4	1	14	17	1	1	10	19	2	2	13	18	2	
Brownsville	35	10	3	2	36	11	3		26	18	6		32	12	3	3
Buckeye (Lancaster)	18	10	1	1	17	13			12	13	3		14	11	2	3
Buckhorn	11	1	4	1	11	2	3		12	2	2	1	12	1	2	2
Buffalo	21	7	6	8	27	9	1	2	29	10	1	1	29	9	2	2
Burgin	25	17		4	27	16	1		19	21	4	1	25	20		1
Burlington	33	11	1	1	37	8			27	16	3		31	13	2	
Burnside	29	10	2	2	30	13			29	10	5		31	12	1	
Bush (Lida)	33	3			35	1			28	5	2	1	27	8	1	
Butler	35	8	1		32	7	1		30	10	2	1	33	7	4	
Butler (Princeton)	32	8	1		31	10			26	13	1	1	25	14	1	1
Calhoun	18	2			18	1			16	3	1		18	1	1	
Calvert City	31	7			34	4			17	14	4	3	22	14	1	1
Camargo (Mt. Sterling)	24	6	3		29	4			25	5	3		23	8	2	
Campbell Co. (Alexandria)	51	17	5	7	64	11	4	1	51	19	9		56	14	10	
Campbellsburg	17	16	6	1	31	9			14	18	4	4	19	14	3	2
Campbellsville	39				39				35	4			37	2		
Camp Dick Robinson (Lancaster)	21	7			19	4			14	9	4	1	15	11	2	
Caneyville	30	6	1		25	11	1		21	12	4		27	10	1	
Cannel City	40	6	1		43	4	1		41	4	2	1	39	7	1	1
Carlisle	31	14	3	3	34	15	1		23	24	4		33	17	1	
Carr Creek	21	2			20	3			18	5			20	2	1	
Carrilton	43	3			42	3			37	8	1		38	7	1	
Catlettsburg	46	2	1		46	2	1		40	8	1		38	9	2	
Caverna (Horse Cave)	47	1			46	2			41	6	1		42	6		
Cayce	27	7	1		27	8			20	12	2	1	24	6	2	
Center	19	2	1	2	20	1	1		16	2	1	5	17	4	2	1
Centertown	20	5			18	4		2	12	11	2		15	10		
Central (Clinton)	32	8	6	2	37	11			36	5	6	1	32	10	6	
Central (Richmond)	40	4	3		41	5	1		33	6	7	1	30	12	3	2
Central City	39	9		2	40	7	1		28	15	5	2	30	16	2	2
Central Park (McHenry)	25	5	2	1	25	6		1	14	16	2	1	14	15	3	1

SCHOOL	COACH				OTHER SCHOOL OFFICIALS				CROWD				TEAM			
	E	G	F	P	E	G	F	P	E	G	F	P	E	G	F	P
Chandlers (Auburn)	14	10	1		20	5			16	9			19	7		
Charleston (Dawson Springs)	40	7	2	1	48	2			34	13	2	1	35	14	1	
Clark County (Winchester)	42	6			44	4			39	8	1		40	9		
Clarkson	27	10	5	2	30	8	4		18	17	9	1	29	11	4	
Clay	30	12		2	34	10			24	17	2	1	22	17	4	1
Clay County (Manchester)	32	2	1		32	3			21	11	3		29	6		
Clifty	25	4	1		24	6			23	4	3		22	5		
Clinton Co. (Albany)	35	3			34	3			29	6	2	1	29	6	3	
College (Bowling Green)	37	2			36	3			34	4	1		36	2	1	
Columbia	39	5	1	1	34	9			39	12	3		36	8		
Combs	35	5	1		32	7	2		25	8	6	2	29	6	2	
Corbin	52	4			55	1			41	14			51	5		
Corinth	29	9	1		32	8			18	17	3	2	21	16	3	
Corydon	40	3			40	3			35	5	2		35	6		
Covington Catholic	21	5	3		23	6			10	16	3		15	11	2	1
Covington Latin	5	5	2		6	5	1		3	6	2	1	5	3	4	
Crab Orchard	17	5			14	8			7	12	3		5	13	4	
Crestwood	47		1		45	2	1		42	3	3		40	5	1	
Crittenden	26	12	9		32	10	2		31	14	2		30	12	3	
Crittenden Co. (Marion)	20	2			20	2			19	3			20	1	1	
Crofton	23	5			24	4			21	5	2		21	5	2	
Cromwell	20	7	1	2	19	10			14	13	1	2	21	8	1	
Cuba (Mayfield)	40	13	1		46	6	1		35	16	3		40	11	3	
Cub Run	24	8			25	9			25	7		1	24	5	4	
Cumberland	40	1			39	2			37	3	1		40	1	1	
Cumberland (Praise)	49	3	2		50	2	2		47	5	2		47	4	3	
Cumberland Co. (Burkesville)	19	8	2		19	8			18	7	2	1	19	9	1	
Cunningham	21	9	1		22	8	1		15	12	3	1	16	10	3	2
Cynthiana	39	11	2		44	6			31	20	1		29	20	3	
Dalton	16	10			17	9			14	12			16	10		
Danville	42	24	4	1	50	18	3		41	23	5	2	39	27	4	1
Daviess Co. (Owensboro)	28	1			28			1	22	7			24	5		
Dawson Springs	22	5	1		24	2	1		19	7	1	1	19	7	2	
Dayton	57	4	4		60	3	1		45	16	2		49	11	4	
Deming (Mt. Olivet)	20	5	2		16	7	3		15	7	3	2	14	9	3	1
Dixie Heights (Covington)	64	7	1		68	4			50	15	4		61	11	1	
Dixon	28	15	4	2	35	12	2		31	15	3		30	14	4	1
Dorton	26	2			26	1	1		22	4	2		21	5	2	
Drakesboro	23	5	1	2	23	6	1	1	15	12	3	1	19	10		2
Dry Ridge	19	14	8	3	24	16	3		19	15	9		27	11	6	
Dundee	21	2		2	21	2	1		17	4	4		17	4	3	1
Dunmor	15	6	2		19	5			11	6	5	2	16	5	3	
duPont Manual (Louisville)	82	9			79	10	1	1	70	16	4		79	12	2	
Earlington	21	6	6		24	6	2		17	13	1	2	24	5	2	2
East Bernstadt	33	8	3		40	3	1		35	7	2		35	8	1	
Eastern (Middletown)	46	5	1		47	5			45	6	1		44	7	1	
Edmonton	20	9	1	1	23	7		1	15	13	3		21	8	1	1
Elizabethtown	68	3			66	4	1		57	12	1	1	58	11	2	
Elkhorn (Frankfort)	48	7	1		49	5	1		41	14		1	41	10	2	3
Eminence	42	2			42	1			31	10	2	1	35	7		
Erie (Olive Hill)	13	3	1		16			1	10	6	1		10	5	2	
Estill (Irvine)	34	5	4		35	7	1		33	7	2	1	33	8	2	
Eubank	23	2		4	24	3			22	4	2	1	21	7		
Evarts	38	3			38	2			33	5	2	1	30	3		1
Ezel	19	7	1		17	10			13	13	1		11	14	2	
Fairdale (Coral Ridge)	49	10	2	2	54	8	1		46	9	6	3	50	11	1	1
Falmouth	28	13	2		31	12			23	13	2	5	25	15	3	
Farmington	41	3	1	1	40	4	1		32	10	3	1	38	7		1
Feds Creek	25	1	1		25	1	1		22	4	1		23	3		1
Ferguson	31	10		3	34	10		1	24	31	6	2	24	16	2	3
Fern Creek (Buechel)	52	3	3	1	55	4			48	9		1	54	4	1	
First Creek (Blue Diamond)	28	4	1	2	26	5	4		22	8	4	1	21	11	1	2
Flaget (Louisville)	51	12	4	5	62	15	1		55	17	6		61	11	5	
Flaherty (Vine Grove)	30	4	1		29	4	1		27	7	1	1	28	5	2	
Flat Gap	20	7	4	1	25	2	4	1	29	5	7		22	6	4	
Fleming Co. (Flemingsburg)	32	15	2		38	11			16	26	7		24	18	7	
Fleming-Neon	45	6	4	3	46	7	4	1	37	15	3	2	39	12	6	1
Florence	44	7	1		40	9	3		29	17	5	1	33	14	5	
Fordsville	24	1			23	2			18	7			19	4	2	
Forkland (Gravel Switch)	13	12			13	12			13	11	1		12	11	2	
Fort Knox	35	2	1		36	2			26	12			30	5	2	
Frankfort	48	19	2	3	54	15	3		35	29	6	2	39	30	2	
Franklin-Simpson	56	3			51	5	1		46	10	2	1	49	10		
Frederick Fraize (Cloverport)	28	6		3	31	4	2		27	10			32	5		
Fredericktown (Springfield)	1	4			1	4			1	3	1		1	3		
Fredonia	26	4	1		25	4	1		20	10	1		20	10	1	
Frenchburg	19	6	5	2	25	4	2		19	9	3	1	18	9	3	1
Fulham (Clinton)	41	4	3	1	42	4	1	2	23	14	7	5	35	9	5	
Fulton	47	8	4	3	53	7	4		47	7	8	1	45	12	6	
Gallatin Co. (Warsaw)	37	3			35	5			23	16	1		30	9		1
Gamaliel	26	5		2	26	5			25	5	3		24	7		2
Garrett	31	4	5	1	30	5	5		27	11	4		33	5	4	
Garth (Georgetown)	50	11	1	2	56	8			42	18	3	1	46	15	1	2
Gathiff	12	1			12				12	1	1		11	1		1
Glasgow	56	4	1	2	57	5			49	10	4		53	7	3	
Glendale	21	9	5	2	33	4			27	9	1		28	9		
Good Shepherd (Frankfort)	10	8	6	3	13	10	3		13	9	4	1	12	9	5	1
Graham	12	11	1	2	15	7	2	1	7	7	6	6	9	7	6	4
Great Crossing (Georgetown)	40	3	1		41	2	1		33	8	3		36	6	2	
Greensburg	19	7			21	4			18	7			20	4	2	
Greenup	16	14	1		20	9	1		15	13	1	2	12	16	3	
Greenville	18	2	5	5	23	2	4	1	15	4	6	5	18	6	1	10
Guthrie	19	13	2		23	10			21	12	1		21	12	1	
Haldeman	4	8			4	8			8	4			8	4		

SCHOOL	COACH				OTHER SCHOOL OFFICIALS				CROWD				TEAM			
	E	G	F	P	E	G	F	P	E	G	F	P	E	G	F	P
Hall (Grays Knob)	44	3	2		43	3	2		42	4	2	1	45	3	1	
Hanson	18	9			18	9			17	10			15	11	1	
Hardburly	27	5	4		23	6	5		18	6	6	6	15	10	5	6
Hardin	9	12	9	7	25	10			13	17	6	1	22	13	2	
Harlan	51	2	1	3	56				50	4	2	1	53	3	1	1
Harrison Co. (Cynthiana)	29	7			29	6			23	12	1		27	8	1	
Harrodsburg	49	8			43	12			31	23	3		32	23	2	
Hartford	28	2	1		26	3	2		21	8	2		23	7	1	
Hawesville	28	8	2		34	3			27	9	2		29	8	1	
Hazard	51	9	2		53	5	2		35	20	5	2	42	13	7	
Hazel Green	36	3			33	6			33	6			29	7	2	
Hazel Green (East Bernstadt)	25	3	1		26	2		1	22	5	2		23	5	1	
Hazel	27	4	1	4	29	7			27	9			27	9		
Heath (Paducah)	33	5	2		34	4			19	11	9	1	23	10	4	3
Hebbardsville	38	3			37	3		1	27	11	3		35	6		
Hebron	36	8	1		36	6			19	20	5	1	27	17	1	
Hellier	23	3	4		26	2	2		22	3	4	1	24	1	5	
Henderson Settlement (Frakes)	13				12	1			12	1			13			
Henry Clay (Lexington)	58	7	1	1	56	11			40	24	3		47	19		
Henry Co. (New Castle)	36	5			35	6			30	7	4		33	6		
Hickman	25	6	4	1	30	6			15	13	6	2	26	10	1	
Highland (Waynesburg)	18	11	1		14	15	1		11	17	1	1	9	14	6	1
Highland (Guerrant)	9	1			7	3			8	2			9	1		
Highlands (Ft. Thomas)	61	8	1		58	12			50	17	2		52	16	2	
Hindman	23				23				19	4			22	1		
Hiseville	21	15	7	4	30	15			26	12	8		27	15	5	
Hitchins	32	3	1		32	3			23	12	1		25	9	2	
Hodgenville	34	3	5	3	37	4	1		33	9	2	2	34	7		
Hoimes (Covington)	67	7	1		67	7			51	22	1		62	12	1	
Holy Cross (Covington)	15	5	1		17	3			14	6			15	3	3	
Holy Cross (Loretto)	10				9	1			5	3	2		6	2		2
Holy Family (Ashland)	28	4			30	1			23	6	2	1	23	9	1	
Holy Name (Henderson)	27	6	1	1	29	6			25	10			32	3		
Hopkinsville	56	10			55	9	2		50	14	2		48	16	2	
Horse Branch	11	2	3	2	11	5	2	1	7	6	4	2	7	8	1	3
Howe Valley (Cecelia)	34	8	1		40	3			38	5			38	3	2	
Hughes-Kirk (Beechmont)	43	5	1		37	8	3		28	13	7	1	30	12	7	
Hustonville	20	6	1	2	23	5		1	14	10	2	3	13	9	4	3
Immaculate Conception (Hawesville)	7	1	3		9	1			10	1			8	2		1
Inez	32	1	1		32	2			30	3	1		31	3		
Irvine	58	10	2	1	57	14			50	17	2	1	48	21	2	
Irrington	36	5	1		38	3			35	6	1		36	6		
Jackson	19	4	1		18	6			20	4			18	6		
Jamestown	29	7	2	1	27	10	2		21	10	4	4	20	12	7	
Jenkins	44	10	4	2	55	2	2		36	14	10	4	40	11	7	2
John's Creek (Pikeville)	11	4	1		11	3	2		11	3	2		11	3	2	
Junction City	13	13	10	2	22	16			18	16	4		21	16	1	
Ky. Mil. Inst. (Lyndon)	17				17				17				17			
Kingdom Come (Linefork)	29	1	1		28	2	1		13	17	1		28	1	2	
Kingston (Berea)	32	6	2	3	39	2	1	1	30	12	1		32	9	2	
Kirksey	23	3	4	1	25	5	1		25	4	2		23	6	2	
Kirksville	42	7	2	2	43	7		1	35	12	3	1	37	12	1	1
Knott Co. (Pippapass)	3				1				3				3			
Knox Central (Barbourville)	42	2	2		45	1			34	10	2		36	5	5	
Kyrook (Sweeden)	32	9	1		24	16	1	1	18	21	2	1	20	16	5	1
Lacy (Hopkinsville)	18	14	2		21	11	2		22	9	3		22	10	2	
Lafayette (Lexington)	59	7	2	4	66	5	1		57	12	1	1	58	11	3	
LaGrange	30	7			29	6			19	8	7	3	22	12	2	1
Lancaster	40	13	1	1	40	15			29	16	6	4	33	17	4	1
Laurel (Camp Dix)	5	3	1		7	2			4	5			4	4	1	
Leatherwood (Slemp)	11	6	2	1	10	7	2		10	3	6	1	10	4	6	
Lebanon	50	11	2	2	52	10	1	1	34	19	6	6	40	20	1	4
Lebanon Junction	24	13	2		21	10			19	18			21	13	3	2
Lee Co. (Beattyville)	29	6	3	2	30	8	1		23	11	5		25	10	1	3
Leitchfield	29	8	2		30	9			22	11	4	2	26	11	2	
Leslie Co. (Hyden)	21	9	1		21	7	1		14	12	4	1	18	10	2	1
Lewisburg	22				20	2			18	4			19	3		
Lewisport	31	5	1		31	4	1		20	12	3	2	25	12		
Lexington Latin	41	8	2	1	45	4	1		26	21	4	1	31	14	6	1
Liberty	23	20	8		24	26	1		13	26	11	1	23	27	1	
Lily	23	7	2	1	27	2	4		20	7	5	1	23	9	1	
Livermore	19	6			22	3			15	8	2		14	8	1	2
Livingston	24	9	1		26	8			23	8	3		25	6	2	
Livingston County (Smithland)	23	2	3		26	1			17	8	3		23	2	3	
Dloyd (Erlanger)	71	7	1		74	4	1		58	17	3		58	18	3	
London	33	4			36				29	8			28	9		
Lone Jack (Four Mile)	21				21				9	11	1		16	4	1	
Lone Oak (Paducah)	38	2	1		38	2	1		33	6	1	1	36	4	1	
Lotts Creek (Cordia)	6	1	1	1	6	1	1	1	7			2	6	1		2
Louisa	45	6	3		47	5	1		42	9	2	2	40	10	4	
Louisville Baptist	14	5		1	15	3	2		14	4	2		15	5		
Louisville Male	64	9		1	64	9			55	13	5		61	11		
Lowes	21	16			22	10			14	15	3		18	12	2	
Loyall	43	9		2	43	9	1	1	34	17	1	2	38	10	6	
Ludlow	57	17			59	15			43	28	2	1	41	28	6	
Lynch	43	5	2		45	5			41	6	3		42	5	2	1
Lynn Camp (Corbin)	35	2	1		36	2			33	4	1		35	3		
Lynn Grove	32	5			28	9			22	13	1	1	25	10	2	
Lynnvale (White Mills)	38	5	2		40	5			36	9	1		36	9	1	
Lyon Co. (Kuttawa)	32	8			33	7			23	14	1	2	31	7	1	1
Mackville	19	9	4	1	20	11	1		18	13	2		19	11	2	
Madison-Model (Richmond)	37	13			42	13			25	17	8	5	34	14	7	
Madisonville	50	13	1		51	11	1		43	18	2	1	47	14	2	1
Magnolia	31	2			28	4			26	6	1		30	3		

SCHOOL	COACH			OTHER SCHOOL OFFICIALS			CROWD				TEAM					
	E	G	F	P	E	G	F	P	E	G	F	P	E	G	F	P
Marion	43	7	4		44	8			40	13	2		36	13	5	1
Martha Norris Mem. (Marrowbone)	29	8	3		30	6	1		25	9	5		21	17	2	
Martin	33	7	2	3	29	8	1		26	9	3	3	29	6	3	3
Mason	20	13	6	1	22	18			18	14	6	2	22	14	1	3
Masonic Home	31	1			32				29	3			25	7		
Mayfield	47	11	7	7	62	6	1		41	14	11	6	45	16	7	3
May's Lick	23	7	1		25	6			17	12	1	1	21	8	2	
Maysville	44	7	1		41	8	3		33	13	5	1	34	16	1	1
Meytown (Langley)	27	1	2		28		2		25	2	2		28	1	1	
Meade County (Brandenburg)	45	4		2	45	6			39	12	1		40	10	1	2
Meade Memorial (WilliamSPORT)	35	7	3		34	6	5		31	8	7		33	8	4	
Melber	26	10	2		26	12			25	11	2		25	11	1	
Memorial (Hardyville)	27	11	1		31	10			27	10	1	1	31	7	1	
Middleburg	44	7	2		35	18			30	19	2	2	37	14	2	
Middlesboro	39	2	1		42	1			35	8			42	1	1	
Midway	18	11	4	2	23	9	3		16	15	4		19	14	2	
Milburn	26	9	2		29	6	2		25	8	4		28	5	4	
Millersburg Mili. Inst.	55	5			49	9	1		43	15	1		39	19	1	
Milton	37	6	2		36	6	1		27	16		1	25	14	3	1
Minerva	24	2	3		23	4	2		19	6	3	1	18	10	2	
Monticello	28	5		1	30	4			23	5	3		28	5	1	
Morehead	3	11			32	8	1		25	14	2		25	14	2	
Morgan	30	7	2	1	24	14	1	1	12	22	3	3	18	18	1	3
Morgan County (West Liberty)	34	15	6	1	42	14			38	16	2		24	24	4	4
Morganfield	43	12	2		50	7			48	5	3	1	51	5	1	
Morgantown	13	7			15	4	1		11	5	3	1	12	7	1	
Mortons Gap	7	16	3		11	13	2		6	14	6		6	16	4	
Mt. Sterling	49	13	5		57	8	2		39	22	2	3	50	16	1	
Mt. Vernon	6	9	6	5	10	11	2	3	7	5	8	6	6	8	7	5
Mt. Victory	6	2			6	2			5	3			5	2	1	
Mt. Washington	18	7	9	1	22	13			18	12	3	2	23	10	1	1
Muhlenberg Central (Powderly)	10	3	3		11	4			8	7			9	6	1	
Munfordville	23	10	2	1	28	7	1		28	6	5		26	12	1	1
Murray	49	4			49	3			44	8			47	6		
Murray Trg.	25	5	1		26	5			22	9			24	5	2	
McAfee	13	3			12	4			10	6			10	6		
McCreary County (Whitley City)	24	3	1	1	23	3	1	1	18	7	3	1	18	7	3	1
McDowell	23	3	1		21	6			18	4	4	1	22	3	2	
McKee	15	5		1	18	3			14	4	3		17	1	2	1
McKell (South Shore)	31	10	7	6	39	10	4	1	35	13	5	1	35	13	4	2
McKinney	19	8			21	6			13	13	1		13	13	1	
Nancy	31	5	1		32	5			27	6	3	1	31	5	1	
Nebo	22	11		1	24	9	1		19	14	1		22	11	1	
New Concord	24	4	1		23	5	1		16	8	3	2	15	7	7	
New Haven (Union)	42	2	2		40	5	1		31	15			32	12	2	
New Liberty	19	13	1	1	24	10			17	11	5	1	15	11	7	1
Newport	52	12	7	1	64	6	2		50	13	5	4	59	11	1	1
Newport Catholic	50	8	1		45	13	1		31	20	7	1	43	12	4	
Niagara (Henderson)	25	3	1		26	2		1	24	4	1		23	5	1	
Nicholas Co. (Carlisle)	28	9	5	1	33	6	2		19	21	1	2	26	15	1	1
Nicholasville	37	18	2	2	42	13	2		34	23	1		34	23		
North Middletown	20	7			25	4			21	7	1		22	6	1	
North Warren (Smiths Grove)	31	7			29	9			27	8	3		30	8		
Nortonville	25	10		4	29	6	1	3	21	9	5	3	24	7	3	5
Oil Springs	32		3		30	3	2		29	4	2		28	4	3	
Okolona (Louisville)	48	4	1		49	3			43	8	2		47	6		
Old Ky. Home (Bardstown)	44	8			40	10			37	13			41	11		
Olive Hill	33	5		1	31	7		1	27	11	1		31	7	1	
Olmstead	25	3			26	2			22	4	2		22	6		
Oneida Institute	18	5			18	7			13	10	2		13	10	2	
Orangeburg (Maysville)	31				30	1			22	8	1		29	2		
Ormsby Village (Louisville)	18	2	2		19	1			13	6		1	16	4		
Owensboro	49	7			52	4	1		43	10	3	2	48	12	3	
Owensboro Technical	32	5	2		31	6	2		23	13	3		29	8	2	
Owenton	18	22		5	25	19	1		20	24	1		20	21	4	
Owingsville	26	9			25	9	1		16	12	2	4	22	13		
Owsley County (Boonville)	16	2			15	2		1	8	7	2	1	15	2	1	
Oxford (Georgetown)	33	7	1	1	36	3			30	11	1		31	11		
Paint Lick	16	5			18	3			13	8			14	7		
Paintsville	60	6	2	1	60	9			54	10	2	3	58	9	2	
Paris	38	26	8	2	44	29			27	40	3	2	38	27	6	3
Park City	32	4	1	1	31	5	1		30	6	1	1	32	3	3	
Parksville	13	11	1	1	16	9	1		5	18	1	2	10	14	2	
Peaks Mill (Frankfort)	24	1		2	22	4	1		17	7	3		21	5	1	
Pembroke	25	6	2		28	5			23	6	4		24	7	2	
Perryville	31	14	4		29	18	2		6	32	10		18	28	3	
Phelps	32	6			32	5	1		29	8		1	28	7		
Pikeville Academy	23	5	2	3	22	9	2		18	11	3	1	17	9	7	
Pikeville	70	4	4		65	5	5	3	59	13	5	1	65	9	4	
Pine Knot	27	2	1	2	29	3			25	7			25	6	1	
Pineville	37	3	3	3	43	1	1	1	32	5	6	3	37	7		2
Pleasant View	26	1		1	24	4			23	5			19	7	2	
Pleasureville	34	5	1		32	6			23	10	6	1	25	13		
Poole	31	9	1	1	37	5			32	5	3	2	30	7	2	3
Poplar Creek (Carpenter)	19	1			15	5			16	2	1	1	13	6	1	1
Portland Christian (Louisville)	12	1			11	2			7	6			7	4	1	1
Powell Co. (Stanton)	41	5			41	5			39	7			39	7		
Prestonsburg	58	7	2	2	57	7	2	1	49	14	3	3	60	7	1	1
Prichard (Grayson)	29	4	1		31	2	1		28	5		1	30	3	1	
Providence	64	4	1		64	3	2		60	6	2	1	63	6		
Pruden (Tenn.)	12	5			13	4			12	3	1	1	10	7		
Pulaski County	25	8		3	27	7		2	27	6	3		24	9	1	3
Raceland	35	11	2	1	38	8			21	23	5		24	29	2	2
Red Bird (Beverly)	6	1			5	2			6	1			3	4		

SCHOOL	COACH				OTHER SCHOOL OFFICIALS				CROWD				TEAM			
	E	G	F	P	E	G	F	P	E	G	F	P	E	G	F	P
Reidland (Paducah)	28	5	1		27	7			19	15			23	9	2	
Richardsville	22	3			21	4			16	1	6	1	17	6	1	
Rineyville	39	6	3		38	6	1	1	30	12	5		35	9	4	
Riverside Christian (Lost Creek)	3				3				3				3			
Robinson (Ary)	20	4	1		21	3	1		18	3	4		18	5	2	
Rochester	28	2			20	9		1	14	11	5		20	9	1	
Rockhold	13	4		1	12	6			14	1	2	1	11	4	3	
Rockport	19	3			17	5			14	6	2		15	6	1	
Rose Hill	15	7	7		18	11			11	14	3		15	12	2	
Royalton	7	3			9	1			7	3			5	5		
Russell	36	8	2		40	6			32	12	2		27	15	3	
Russell Springs	33	7	3		33	10			24	12	5	1	31	11	1	
Russellville	44	6	1		46	4			40	11			43	7	1	
St. Agnes (Uniontown)	5				5				4	1			5			
St. Augustine (Lebanon)	21	11	4	2	23	9		4	15	11	8	3	13	19	4	1
St. Camillus (Corbin)	15	3			16	2			13	4	1		8	8	2	
St. Charles (Lebanon)	34	11	2	3	33	12	3		28	16	3	2	35	13	1	
St. Frances (Owensboro)	44	3	1		48	2			43	5	1		45	3	2	
St. Francis	6				5	1			6				6			
St. Henry (Erlanger)	32	15	1		29	16	2		26	19	2		33	12	2	
St. Jerome (Fancy Farm)	20	6		2	20	6	1	1	9	11	5	3	18	6	3	1
St. Joseph (Bardstown)	58	5	3	1	58	7		1	48	15	4	1	52	12	4	
St. Mary (Paducah)	11	4	2		12	14	1		5	6	5	1	9	5	3	
St. Patrick (Maysville)	32	2	3		32	2	2		24	11	1		26	9		2
St. Thomas (Fort Thomas)	18	6			20	4			15	8	1		18	5	1	
St. Vincent	8	2			6	4			7	3			7	2	1	
St. Xavier (Louisville)	62	15	4		67	11	2		62	15	4		64	15	1	
Sacramento	16	5	2	1	20	4			15	7	2		16	8		
Sadieville	12	4	2	1	11	7	1		8	11			10	7	1	1
Salem	25	5			28	2			23	5	2		21	6	3	
Salt Lick	22	4			24	2			14	12			16	10		
Salvisa	10	8			10	9			7	4	7	1	10	9		
Salyersville	30	8	3	1	30	9	2	1	27	11	3	1	27	10	4	1
Sandy Hook	21	4	1		24	2			21	3	2		18	3	3	2
Science Hill	24	7	2	6	29	7	3	1	18	11	4	6	19	10	4	7
Scottsville	31	4			29	5			29	6			33	3		
Sebree	27	6	1		29	5			21	10	1	2	24	8	1	1
Sedalia	29	13			27	15			20	18	4		21	20	1	
Sharpe (Benton)	41	3			39	4			29	12		3	35	9		
Sharpsburg	31	8			30	8	1		25	13		1	25	14		
Shawnee (Louisville)	39	3	1	1	39	5			36	8			34	10		
Shelbyville	70	8			65	13			58	20			59	18		
Shepherdsville	34	8			33	7			25	15	2	1	29	13		
Shopville	26	4			22	8			20	10			24	5		1
Silver Grove	27	9	4	3	28	11	1		14	25	2	1	23	18	1	
Simon Kenton (Independence)	43	8	1		48	4			29	20	3		33	14	3	2
Simpsonville	30	5			30	5			31	3	1		31	3	1	
Sinking Fork (Hopkinsville)	25	4	1		26	4			25	4	1		23	6	1	
Slaughters	38	6			40	4			35	9			38	6		
Somerset	36	15	8	4	41	15	4	2	32	19	6	6	29	15	13	6
Sonora	33	5		1	37	2			34	4	1		35	4		
South Christian (Herndon)	36	7	1		38	6			34	8	1	1	34	7	1	1
South Portsmouth	21	7	1		25	2	1		19	7	2	1	20	7	1	1
Spottsville	9	2			9	2			8	2	1		7	4		
Springfield	48	10	2		45	13			28	27	3		27	29	3	
Stamping Ground	18	12	2	3	23	8			19	8	7	1	24	9	2	
Stanford	42	12			43	10			32	18	3	1	38	15		
Stearns	26	8			27	8			26	7	2		28	6	1	
Stinnett Settlement (Stinnett)	8				8		1		8		1		7	1	1	
Stuart Robinson (Blackey)	18	3	1	1	19	3	1		17	5	2		16	5	3	
Sturgis	44	4			43	5			34	11	3		37	10	1	
Sunfish	20	11	4	1	16	15	3	1	13	18	5		21	10	5	
Symsonia	22	11			23	7	2	1	17	13	2	1	24	9		
Taylor County (Campbellsville)	23	10	3	2	26	29			21	11	4	2	24	12	2	1
Taylorsville	33	4			30	5			23	13			23	13		
Temple Hill (Glasgow)	26	7	3		28	5			24	6	3		25	7	4	
Theodore Ahrens Trade (Louisville)	20	3			19	4			18	4	1		19	3	1	
Tilghman (Paducah)	60	6		1	64	1	1		55	10		2	59	7		
Todd County (Elkton)	16	6	1		6	5	1		15	7	2		18	5	1	
Tollesboro	18	7			17	8			14	11			15	10		
Tompkinsville	47	9			45	10			37	14	5		42	13	1	
Trenton	13	8	4		18	7			18	6	1		20	5		
Trigg Co. (Cadiz)	53	11			55	9			47	16	1		55	10		
Trimble Co. (Bedford)	36	5			37	3			30	10	1		36	5		
Tyner	12	3			13	2			12	1	2		12	1	2	
Uniontown	20	2	1		19	3		1	15	18			21	2		
University (Lexington)	36	3	1		35	4	1		32	7	1		33	6	1	
Utica	31	6	2		32	7			28	10	1		29	7	3	
Valley	64	7			65	5		1	58	13	1		60	8	1	
Vanceburg-Lewis County (Vanceburg)	42	9	2		46	6	1		36	17			36	14	2	1
Van Lear	25	3	3		25	4	2		22	4	3	2	23	3	4	1
Versailles	38	16	3		47	9	1		32	21	4		32	22	3	
Vicco	36	5	3		37	5	1		29	6	7	2	31	6	7	
Vine Grove	38	6	1	1	45	1			32	13	1		38	7	1	
Viper	27	6	1	1	28	5	1	1	22	9	4		25	6	4	
Virgie	31	6	1	3	32	6	3		21	15	4	1	23	12	6	
Waco	32	3		3	35	2		1	32	4	2		34	3	1	
Waddy	28	5	1	2	30	6			27	8		1	26	9		1
Wallins (Wallins Creek)	29	4	3		34	1			31	3	1		30	5	1	
Walton-Verona (Walton)	35	9	1		37	6	2		18	16	9	3	33	10	2	
Warfield	31	10			29	12			25	13	1	2	29	10	2	
Warren County (Bowling Green)	23	6	5		27	6	1		21	10	3	1	26	8	1	
Wayland	47	8	1		47	4	2	2	42	7	6	1	47	8		1
Wayne Co. (Monticello)	30	2	1	2	29	3	1		28	2	5		27	6	2	

SCHOOL	COACH				OTHER SCHOOL OFFICIALS				CROWD				TEAM			
	E	G	F	P	E	G	F	P	E	G	F	P	E	G	F	P
Waynesburg	20	8	2		14	16			11	13	4	2	11	12	6	1
Western (Hickman)	11	3	2	1	13	2	2		11	1	3	2	7	2	3	5
Western (Sinai)	28	5			26	7			22	12			23	11		
West Louisville	22	6	2	1	28	2	1		24	5	2		25	5		1
West Point	37	6	1	2	33	8	2	3	33	8	2	3	35	6	2	3
Wheatcroft	30	10	4	1	33	11	1		29	14	2		30	14	1	
Wheelwright	37	5			38	3	1		27	14	1	1	33	9	1	
Whitesburg	45	7	2	2	51	2	2		36	13	4	2	43	11	1	
Whitesville	25	2		1	24	2			22	4	2		25	3		
Wickliffe	48	5			46	7			28	16	3	1	41	7		
Williamsburg	34	3	4		36	4	1		26	9	2	4	34	4	2	1
Williamstown	27	12	2		30	5	2		22	15	4		29	9	3	
Willisburg	15	13	9	5	21	16	3	1	16	19	5	2	22	13	6	1
Wilmore	33	10	4	1	37	9	1		28	16	4		35	10	3	
Winchester	39	16	3	5	43	15	1	3	25	32	3	3	34	21	5	4
Wingo	17	14			21	7	3		16	13	2		19	12		
Woodbine	22	5			23	3	1		20	4	1	2	19	6	2	
Wolfe Co. (Campton)	32	5			32	3	1	1	28	7	2		26	11	1	
Wurtland	45	9	5		50	8	1		41	9	9		39	18	2	

REPORT OF INSURANCE CLAIMS

One hundred seventy-eight schools insured their athletes under the K. H. S. A. A. Protection Fund in 1950-51. In football 1859 boys were insured, in basketball 2971, in baseball 163, and in Track 43. Four hundred eighteen injuries were reported, and 331 claims, totaling \$5,968.99, were paid.

School	Claimant	Injury	Amount Paid
Allen County	Charles Fisher	Loss of tooth	\$18.00
Athens	Charles E. Guilfoil	Broken tooth	18.00
Athens	David Morgerson	Fractured metacarpal and X-Ray	21.00
Athens	Neal Cosby	X-Rays	12.00
Bardstown	Charles Smith	Fractured radius	20.00
Bardstown	Charles Monroe	Fractured metacarpal	15.00
Bardstown	Owen Tolbott	X-Rays	12.00
Bardstown	Lloyd Meyer	Loss of teeth	35.00
Bardwell	Robert E. Petrie	Loss of tooth	18.00
Barret	Donald Utley	Dislocated shoulder	15.00
Barret	Robert Melton	X-Ray	10.00
Barret	Kenneth Trent	X-Rays	12.00
Barret	Cecil Ray Scott	Loss of tooth	15.00
Barret	James Cohron	X-Rays	8.00
Barret	Roy E. Webster	Broken tooth and X-Ray	20.00
Barret	Jack O'Nan	X-Rays	8.00
Beech Grove	Argyle Ray Faith	X-Ray	7.00
Beech Grove	Royce Smith	Loss of tooth	18.00
Bellevue	Tom Suter	Loss of tooth	18.00
Bellevue	John Braukman	Loss of teeth	35.00
Bellevue	Richard Young	Fractured nose and X-Ray	30.00
Bellevue	Gerald Wendell	Broken nose and X-ray	22.00
Bellevue	Tom Suter	Replacing knocked out fillings	8.00
Bellevue	Pat Uebel	Injured femur-operative case	79.60
Berea	Richard Cavalier	X-Ray	4.00
Berea	Earl Hamilton	X-Ray	4.00
Blandville	Elmo Gunn	Fractured tibia	37.10
Blandville	David Tisdal	Broken teeth	35.00
Bowling Green	Walter Holland	Broken teeth	30.00
Bowling Green	James Dotson	Broken teeth	35.00
Breckinridge County	Jimmy Day	Fractured radius and ulna	42.00
Buckeye	Billy Pendelton	Loss of tooth and X-Ray	20.00
Buckeye	Russell Hill Teater	X-Rays	20.00
Burgin	H. G. Reed	X-Ray	4.00
Burlington	Bobby L. Walton	Fractured tibia and fibula	75.00
Burlington	Robert Combs	X-Rays	7.00
Campbell County	Myron Miller	Laceration-suture	5.00
Campbell County	Dick Straus	Dislocated ankle and X-Rays	27.00
Campbell County	Robert Koehler	Laceration-suture	5.00
Campbell County	Dick Oldendick	X-Ray	4.00
Campbell County	Bill Hardy	X-Ray	5.00
Campbell County	Martin Tarvin	X-Ray	5.00
Campbell County	Howard Cope	Broken nose and X-Ray	25.00
Campbellsville	Don Shaw	X-Rays	8.00
Campbellsville	Joseph Kearnes	X-Ray	4.00
Carlisle	Gary Flora	Laceration-suture	5.00
Carlisle	Oliver Owings	X-Ray	10.00
Catlettsburg	Wayne Blankenship	X-Ray	6.00
Catlettsburg	Bill Lauhon	Broken tooth	6.00
Catlettsburg	Harold Barker	X-Ray	4.00
Catlettsburg	Roger Kitchen	Fractured radius	40.00
Catlettsburg	Don Wellman	X-Ray	10.00
Central (Richmond)	Norvelle Azbill	Loss of tooth	2.00
Chandler's	Russell Simmons	Fractured radius and ulna	48.00
Clay	Curtis Hill, Jr.	Fractured skull and X-Rays	53.70
Clinton County	George Walls	X-Ray	4.00
Corbin	Phil Henderlight	Fractured metacarpals	25.00
Corbin	Paul Myers	Broken tooth	15.00
Corbin	Jerry Perkins	X-Rays	20.00

School	Claimant	Injury	Amount Paid
Corinth	Eddie Rogers	X-Ray	4.00
Corydon	Raymond Morris	X-Ray	6.00
Corydon	Joe Whitmore	Broken toe and X-Ray	11.50
Cumberland	Harold Fields	X-Rays	20.00
Cynthiana	Gary Fields	X-Ray	6.00
Cynthiana	Stanley Moses	Laceration-suture	5.00
Cynthiana	Larry Shadd	Fractured metatarsal	20.00
Cynthiana	Clay Ashbrook	Dislocated knee	25.00
Cynthiana	Frazier Palmer	Fractured fibula	50.00
Cynthiana	John Ross Reno	Laceration-suture	5.00
Cynthiana	John Young	Laceration-suture	5.00
Cynthiana	V. D. Florence	Laceration-suture	5.00
Cynthiana	Norman Fowler	X-Ray	4.00
Danville	Harold Harmon	Fractured finger and X-Rays	17.00
Danville	Donald Tucker	X-Rays	20.00
Danville	Marion Key	Injured knee-operative case	59.56
Danville	Charles Pack	Injured eye	36.52
Danville	Creston Coomer	Fractured fibula	28.35
Dayton	Terry Hughes	Broken nose	15.00
Dayton	Robert Bolmer	Dislocated shoulder	15.00
Dayton	Edward Haley	X-Ray	4.00
Dry Ridge	Allen Lawrence	Dislocated thumb and X-Ray	11.50
Eastern	Don Miller	Fractured metacarpal	15.00
Eastern	Arthur Hellebusch	Fractured finger	10.00
Eastern	Arthur E. Wilson, Jr.	Broken toe and X-Rays	12.00
Eastern	Eugene Murphy	Loss of teeth	35.00
Eastern	Sherrill Wayne	Broken tooth and X-Ray	20.00
Eastern	Thomas Keeling	Fractured metatarsal	23.00
Eastern	Robert F. Wray	Fractured metatarsals	40.00
Eastern	Sherrill Wayne	Broken tooth	18.00
Eastern	Furnal Wallen	X-Ray	4.00
Eastern	Charles Mingus	X-Ray	10.00
Eastern	Charles Mingus	Fractured finger and X-Ray	13.00
Eastern	Charles Mingus	X-Ray	5.00
Eastern	Furnal Wallen	X-Rays	15.00
Eastern	Ray Bryant	X-Rays	15.00
Eastern	Frank Boone, Jr.	Broken tooth	18.00
Eastern	Frank Boone, Jr.	Broken tooth	18.00
Eastern	John Gray	Broken tooth	6.00
Elizabethtown	Perry Braden	X-Ray	10.00
Elizabethtown	Perry Braden	Broken nose	20.00
Elizabethtown	Claude Van Meter	Broken tooth	18.00
Elkhorn	Charles Yeast	Fractured tibia	50.00
Elkhorn	Donnie Karsner	Dislocated shoulder and X-Rays	25.00
Falmouth	David Parker	X-Ray	4.00
Ferguson	Ray Stines	Loss of tooth	8.00
Fern Creek	James Ellingsworth	Dislocated shoulder	20.00
Fern Creek	Albert Schrader	Dislocated finger and X-Ray	11.50
Fern Creek	Louis Ernspiker	Broken teeth	4.00
Fern Creek	Johnny Allison	Dislocated finger and X-Ray	9.00
Fern Creek	Don Katzman	Dislocated finger and X-Rays	15.50
Fern Creek	Stanley Hornbeck	Ruptured kidney	68.40
Fordsville	Paul Steenbergen	X-Ray	6.00
Fordsville	Billy Kirk	X-Ray	4.00
Franklin-Simpson	Buddy Harris	Fractured metacarpal and X-Rays	36.00
Franklin-Simpson	Louis Potter	X-Rays	20.00
Franklin-Simpson	John James Kelly	X-Rays	18.00
Franklin-Simpson	Jesse Tuck	X-Rays	8.00
Frederick Fraize	Paul Galens	Broken nose	20.00
Frederick Fraize	Johnnie Meadors	X-Rays	5.00
Fredonia	Hugh Yates	Laceration-suture	5.00
Fredonia	Charles Vinson	X-Ray	6.00
Fulton	Billy Browning	X-Ray	6.00
Fulton	Dan Collins	Fractured radius	40.00
Fulton	Joe Pigue	Fractured ulna	40.00
Fulton	Bobby Toon	Fractured ulna	26.50
Gallatin County	Donald Webster	Hernia-operative case	75.44
Gallatin County	William Beach	X-Ray	6.00
Gamaliel	Emory Cook	X-Rays	8.00
Gamaliel	Duane Copass	Fractured carpal and fractured cheek bone	55.00
Hardin	Jo Mimms	Fractured finger	5.00
Hardin	John Darnall	Broken nose	10.00
Harlan	Neville Myers	X-Ray	4.00
Harlan	Gorman Ayers	X-Ray	6.00
Harrodsburg	Homer James	Dislocated shoulder	12.00
Harrodsburg	Maynard Webb	Fractured metacarpal	10.00
Harrodsburg	Connie Drury	X-Ray	4.00
Hawesville	Tommy Faught	Loss of teeth	35.00
Hazard	James Clifton	X-Ray	7.50
Hazard	Charles Littrell	Broken nose and X-Ray	11.00
Hazard	Roscoe Shackelford	Fractured tibia	50.00
Hazard	Harry G. Lovelace, Jr.	Laceration-suture	5.00
Hazard	Glenn Maggard	X-Ray	7.50
Hazard	Charles Hines	X-Rays	12.00
Hazard	Robert Lutes	X-Rays	11.00
Hazard	Don Mosley	X-Ray	6.00
Hazard	Charles Hines	Knee operation	88.00
Heath	Glenn Fletcher	X-Rays	15.00
Heath	Wayne Wallace	X-Ray	4.00
Henry Central	Larry Jeffries	X-Ray	3.50
Henry Central	Billy McGrew	X-Ray	3.50

School	Claimant	Injury	Amount Paid
Henry Central	William Mason	X-Ray	3.50
Henry Central	William Roberts	X-Ray	3.50
Hickman	Robin Lee Pierce	Broken tooth	17.00
Hiseville	Lewis Paul Ferguson	X-Ray	7.00
Hodgenville	Gordon Keith	Fractured radius and ulna	60.00
Horse Branch	Dewey Minton	Fractured radius and ulna	25.00
Irvine	Paul Flynn	X-Rays	15.00
Irvine	Roger Watson	X-Ray	5.00
Irvine	Rhonda Flynn	Fractured thumb	10.00
Lancaster	Shelton Moss	Laceration-suture	5.00
Lancaster	Billy Estes	Broken nose	20.00
Lancaster	McKinley Gay	Fractured clavicle	35.00
Lancaster	Bobby D. Lane	Broken toe	10.00
Lancaster	Elwood Lane	Loss of teeth	35.00
Lebanon	Lisle Harmon	X-Rays	8.00
Lebanon	George Owen	Chipped tooth	2.00
Lebanon	Johnny Wheeler	X-Ray	7.00
Lebanon	Gary Corbett	Chipped teeth	6.00
Lebanon	Morris Owen	Dislocated shoulder	15.00
Lebanon	Spalding Smith	X-Rays	8.00
Lebanon Junction	Donald Ray Crady	X-Ray	8.00
Leitchfield	Coy Sanders	X-Ray	10.00
Leitchfield	Ralph Ashley	Fractured clavicle	35.00
Leitchfield	Bob Glenn	X-Rays	8.00
Louisa	Glen Graham	Loss of teeth	35.00
Louisa	Harold Simpson	Loss of teeth	35.00
Louisa	Laurence Adams	X-Rays	12.50
Louisa	Bernard Nelson	X-Rays	10.00
Louisa	Donald Salisbury	X-Ray	6.00
Louisa	Harold Simpson	Loss of tooth and X-Ray	20.00
Lynch	Charles Monhollen	Loss of tooth	18.00
Lynch	Coy Galloway	Fractured radius and ulna	60.00
Lynch	J. C. Carpenter	Fractured clavicle	35.00
Lynch	John Weston Day	Broken thumb	10.00
Lyon County	Calvin Ramey	X-Rays and laceration-suture	37.00
Madisonville	Bill Payne	Broken teeth	35.00
Madisonville	Paul Hibbs	Fractured humerus	60.00
Madisonville	David Kyler	Fractured clavicle	35.00
Madisonville	James Kenneth	X-Ray	6.00
Madisonville	Meldon Utley	X-Ray	6.00
Madisonville	Bobby Buffington	Fractured radius	40.00
Madisonville	Roy Wilson	Fractured rib	10.00
Madisonville	Jim Rucker	Broken teeth	35.00
Madisonville	Morris Yates	Laceration-suture	5.00
Madisonville	Calvin Walls	Laceration-sutures	10.00
Madisonville	Calvin Walls	Fractured vertebra and X-Rays	20.00
Madisonville	Monroe Frederick	Fractured clavicle	35.00
Mason	Paul Simpson	Laceration-suture	5.00
Mason	Donald Fornash	X-Ray	6.00
Mays Lick	Paul Collins	X-Ray	10.00
Maysville	Jack Weaver	Dislocated elbow and X-Ray	21.00
Maysville	Carty Tucker	Dislocated shoulder	20.00
Maysville	Sam Berryman	Dislocated ankle	15.00
Maysville	Robert Zweigart	Dislocated shoulder	19.50
Maysville	Jerry Calvert	Loss of tooth and X-Ray	20.00
Maysville	Glenn Hutchinson	Dislocated finger	5.00
Middlesboro	Bill White	Dislocated shoulder and X-Ray	25.00
Middlesboro	Bobby Stanley	X-Ray	5.00
Middlesboro	Jimmy Adams	X-Ray	5.00
Middlesboro	Frank Standifer	X-Ray	5.00
Middlesboro	Robert Bryant	X-Ray	5.00
Middlesboro	G. W. Lambert	X-Ray	4.00
Middlesboro	Jack Long	X-Ray	5.00
Middlesboro	John Money	Loss of teeth	35.00
Middlesboro	Don Mays	X-Ray	5.00
Middlesboro	Joe Wright	X-Ray	5.00
Middlesboro	Bobby Wilson	Laceration-suture	5.00
Middlesboro	Oscar Penland	X-Ray	10.00
Middlesboro	Jack Gulley	X-Rays	10.00
Middlesboro	G. W. Lambert	X-Rays	20.00
Middlesboro	Neal Buchanan	Laceration-suture	5.00
Middlesboro	Bobby Jenkins	X-Ray	4.00
Middlesboro	Lynn Rowland	Loss of tooth	18.00
Morganfield	Luther Joiner	Fractured clavicle	32.50
Morganfield	Arthur Mattingly	X-Ray	10.00
Morganfield	Bob Goben	Fractured metacarpal	20.00
Morganfield	James Joiner	X-Ray	6.00
Morganfield	Ray Thompson	Fractured clavicle	35.00
Morganfield	Henry Griffin	X-Rays	4.00
Morganfield	James Joiner	Broken tooth	2.00
Morganfield	Charles McCullough	Fractured mandible	40.00
Mt. Sterling	Stewart Turley	Broken tooth	4.00
Mt. Sterling	Pat Dale	X-Rays	8.00
Mt. Sterling	Harold Hayes	X-Ray	4.00
Mt. Sterling	Darwin Saunders	X-Ray	10.00
Mt. Sterling	Jimmie Bayes	Dislocated shoulder and X-Ray	30.00
Mt. Sterling	Harold Ensor	Laceration-suture and X-Ray	9.00
Mt. Sterling	Algin Nolan	Laceration-suture	5.00
Mt. Sterling	Billy Bashford	Loss of teeth and laceration-suture	40.00
Munfordville	Orville Bozarth	Tendon-separation from bone	7.50
Munfordville	Don Craddock	Fractured clavicle	15.00

School	Claimant	Injury	Amount Paid
Munfordville	J. W. Reynolds	Two chipped teeth	6.00
Murray	Jimmy Boone	Broken tooth	10.00
Murray	Glenn Billington	X-Ray	4.00
Murray	John Sprunger	X-Ray	4.00
Murray	Will Mac Jones	X-Ray	6.00
Murray	Kenneth Smith	X-Ray	6.00
Murray	Bobby Gene Dowdy	X-Ray	6.00
Murray	Doug Wearren	X-Ray	6.00
Murray	Bud Tolley	X-Ray	6.00
Murray	Delbert Childress	X-Ray	7.50
Murray Training	L. J. Hendon	X-Ray	4.00
Murray Training	Jackie Byerly	Loss of tooth and X-Rays	23.00
Murray Training	Robert Bowden	Laceration-suture	5.00
Murray Training	L. J. Hendon	X-Ray	5.00
Niagara	Jimmie Hancock	X-Ray	10.00
Nicholasville	Woodrow Harvey	Fractured pelvis	29.00
Nicholasville	Merrell Teater	X-Ray	6.00
North Warren	Billy Falin	X-Ray	10.00
Nortonville	Freeman Teague	Loss of tooth	6.00
Okolona	James Sweeny	Fractured fibula	50.00
Okolona	Bob Paul	Fractured metacarpal and X-Ray	21.00
Okolona	Donald Ingold	Injured knee-operative case	80.12
Old Kentucky Home	Joe Beverly Borders	Laceration-suture	5.00
Old Kentucky Home	Charles Ratliff	Tendon-separation from bone	7.50
Old Kentucky Home	Selvie Hodge	Tendon-separation from bone	7.50
Paris	William G. Talbott	Fractured tibia	49.00
Paris	Wayne Shumate	Fractured clavicle	35.00
Paris	Donald McCord	Fractured tibia and fibula	75.00
St. Jerome	William Willett	Loss of teeth	35.00
Salem	James Malcon	X-Ray	5.00
Shelbyville	Bob Hubbard	Fractured metacarpal and X-Ray	24.00
Shelbyville	Willard S. Igleheart	Injured knee-operative case	100.00
Shelbyville	Jimmy Lee	Fractured clavicle	42.70
Simpsonville	James Reed	X-Ray	10.00
Slaughters	Hugh Ashby	Broken tooth	18.00
Slaughters	Clarence Dunville, Jr.	X-Ray	4.00
Somerset	Bobby Neikirk	Dislocated thumb and X-Ray	10.00
Somerset	Billy F. Adams	X-Ray	4.00
Somerset	Lloyd Jasper	Fractured clavicle	35.00
Somerset	Dwayne Wilson	Laceration-suture	5.00
Somerset	Grady Smith	Laceration-suture	5.00
Somerset	Charles Colyer	Laceration-suture	5.00
Somerset	Karl Bodie	Fractured tibia and fibula	75.00
Somerset	Dwayne Wilson	X-Ray	4.00
Somerset	H. B. Marcum	Fractured ulna	13.00
Somerset	Donald Jones	X-Ray	10.00
Somerset	H. B. Marcum	Broken toe and X-Ray	14.00
Sonora	Harvey Cardin	X-Rays	8.00
Sonora	Teddy Chenault	Dislocated finger-operative case	51.60
Springfield	Albert Isham	Fractured fibula	18.00
Springfield	Bruce Williams	X-Rays	8.00
Springfield	Billy M. Sutton	X-Rays	12.50
Springfield	Kenneth Hall	X-Rays	8.00
Springfield	Fabian Cambron	X-Rays	10.00
Stuart Robinson	Jack Taylor	Dislocated elbow	15.00
Stuart Robinson	Marion Hubbard	Fractured tibia	50.00
Stuart Robinson	Keith Venters	Dislocated shoulder	7.50
Stuart Robinson	Harold Adams	Dislocated hip and X-Rays	47.50
Taylorville	Scotty Carr	X-Rays	6.00
Temple Hill	Reid Bacon	Dislocated shoulder	14.00
Temple Hill	Reid Bacon	Broken teeth	25.00
Tilghman	Bert Owen	Fractured thumb	24.00
Tilghman	Frank Tucker	X-Ray	6.00
Tilghman	Leon Clark	X-Ray	4.00
Tilghman	Warren Hicks	X-Ray	6.00
Tilghman	George Cook	X-Ray	10.00
Tilghman	David Tapp	X-Ray	10.00
Tilghman	Bob Jones	X-Ray	6.00
Tilghman	Rumsey Houser	X-Rays	25.00
Tilghman	Frank Tucker	X-Rays	12.00
Todd County	Thomas Williams, Jr.	Fractured tarsal	5.00
Todd County	James Jordon	Loss of Tooth	10.00
Tompkinsville	Louis Bradford	X-Rays	10.00
Tompkinsville	Fred Painter	X-Ray	8.00
Trigg County	Denzil Bridges	X-Ray and laceration-suture	11.00
Trigg County	Wade Kennedy	Fractured finger and X-Ray	14.00
Trigg County	John Coleman	X-Ray	10.00
Trigg County	Cecil Noel	Fractured clavicle	35.00
Trigg County	Bill Jones	Broken tooth	6.00
Trimble County	David Craig	Loss of teeth	35.00
Valley	Jerry Johnson	Fractured clavicle	35.00
Valley	Kenneth Murphy	X-Ray	6.00
Valley	Norbert Spencer	Fractured femur	80.00
Valley	Kenneth Wonder	Hernia-operative case	52.40
Valley	Reid Smith	Loss of teeth	35.00
Virgie	Bob Akins	X-Ray	4.00
West Louisville	Jimmy Fogle, Jr.	Fractured metatarsal and X-Ray	29.00
Willisburg	Eddie Simms	Broken tooth	15.00
Winchester	George Williams	Fractured fibula	35.00

We Can Supply You With Everything You Need in

Football and Basketball Equipment

In The Famous

MacGregor-Goldsmith Line

Bob Levy will be glad to call on you at your convenience to help you with any of your athletic equipment needs.

TELEPHONE
JA 5161

LEVY BROS.

MARKET AT 3rd
LOUISVILLE 2, KY.

FROM THE COMMISSIONER'S OFFICE

(Continued from Page Five)

and from the treasury of the Association. The committee reported that it had received the assistance of Secretary N. O. Kimbler of the Teachers' Retirement System in formulating the plan presented. The Board by unanimous vote accepted and approved the report of the Committee, adopted the plan as recommended, and authorized the Commissioner to proceed with the preparation of the retirement fund documents. The Board named the President, Vice-President and Commissioner members of the investment committee for the Retirement Fund.

Mr. Mansfield Returns

The many friends of Assistant Commissioner Joe Billy Mansfield will be glad to learn that he has moved back to his home in Henderson, preparatory to resuming his work with the Association on September 1. Mr. Mansfield became critically ill during April of 1950 and was hospitalized at that time. He later underwent a very serious operation, from which he is now recovering. He is a most welcome addition to the K.H.S.A.A. staff.

Correction

To date very few errors or omissions in the 1951 publications have been discovered. In the Football Player Handbook, page 42, the last two sentences of the fifth paragraph should be omitted since they erroneously refer to a free kick which is recovered in R's end zone as being advanced. Since ball becomes dead immediately, no such advance is possible.

Iowa Employs Assistant Secretary

Harold G. Schmickley, Superintendent of Schools at Dayton for the past four years, has been named as an Assistant in the offices of the Iowa High School Insurance Company and the Iowa High School Athletic Association. Most of Mr. Schmickley's time will be devoted to the insurance company, but he will also assist in conducting baseball clinics during the year.

FOOTBALL SUPPLIES

The football season is "just around the corner."

However, our stock is very complete. We bought early and had the supplies shipped last month, so write us or phone us your order for practice footballs, practice pants, practice jerseys, practice cleats, chin straps, sweat socks, athletic supporters, shoulder pad laces, pant laces, foam rubber, squad shirts, shimmil shirts, web belts, knee braces, bruise pads, adhesive tape, Cramer's first-aid supplies, foot powder, benzoin, tackling dummies, bath towels, shin guards, powdered resin, absorbent cotton, band-aids, surgical scissors, gauze bandage and hundreds of other items.

We are in a position to give prompt delivery on special made helmets, shoulder pads, football jerseys, football pants, football shoes, hip pads, rib pads, admission tickets, football posters properly imprinted with your schedule, goal line flags, wet markers, dry court markers, dry stag line white or the wet stag line white, linesmen's chain sets, sideline jackets, etc.

If you are in the market for a Fair Flay Football Scoreboard, we can supply your order immediately. Two more are available for August delivery.

Our representative will gladly call to see you with samples.

HUNT'S ATHLETIC GOODS CO.

PHONE NO. 103

MAYFIELD, KY.

"The Largest Independent Exclusive Athletic House in the South"

SUTCLIFFE IS READY

with complete football, basketball
and athletic equipment for the fall season



IMMEDIATE DELIVERY

No delays! No waiting! No shortages! Stock merchandise can be shipped on the very day your order is received. Equipment of preferred quality — the desired nationally known — nationally advertised.

Sutcliffe's new fall catalog will be mailed to all schools on or about September 1, but if you wish quick service, pick up telephone, call CLay 0283, Louisville, and ask for S. B. Arterburn or J. W. Head.

Sutcliffe's school representatives also will contact you during the year. Harry Blackburn, 1340 Linwood Ave., Columbus, Ohio, will cover the Big Sandy Valley; Bob Reis, 106 Burdsall Avenue, South Fort Mitchell, Ky., will cover Northern, Central and Eastern Kentucky, and Charles (Chuck) Shuster, Box 84, Horse Cave, Ky., will travel Western and Southern Kentucky.



OFFICIAL BASKETBALLS

- No. 104 Spalding Last Bilt.....**\$22.95***
- No. RSS Rawlings Sealed Seam Moulded Basketball **22.95***
- No. RS3 A lower-priced Rawlings Sealed Seam Moulded Basketball **17.50***
- No. CB2 Voit Rubber Ball, especially for outdoor use.. **10.85***

OFFICIAL FOOTBALLS

- J5V Spalding } **\$15.85***
WR Wilson } Regular tan, white
RS Rawlings } or yellow balls
Yellow or white Official Balls
with black bands**\$16.85***
- No. A4—Official Rawlings Football which has been discontinued by the factory, because of a change in leather. This ball is official for any high school or college game. Now, only**\$10.95***

*All prices quoted are wholesale school prices. If Tax Exemption Certificate is given us with your order you may deduct 1/11th off the above price. If the tax is killed in Washington (almost a certainty) before school opening we will automatically make the deduction of 1/11th without a Tax Certificate.

THE **SUTCLIFFE CO.** INC.
LOUISVILLE 1, KENTUCKY